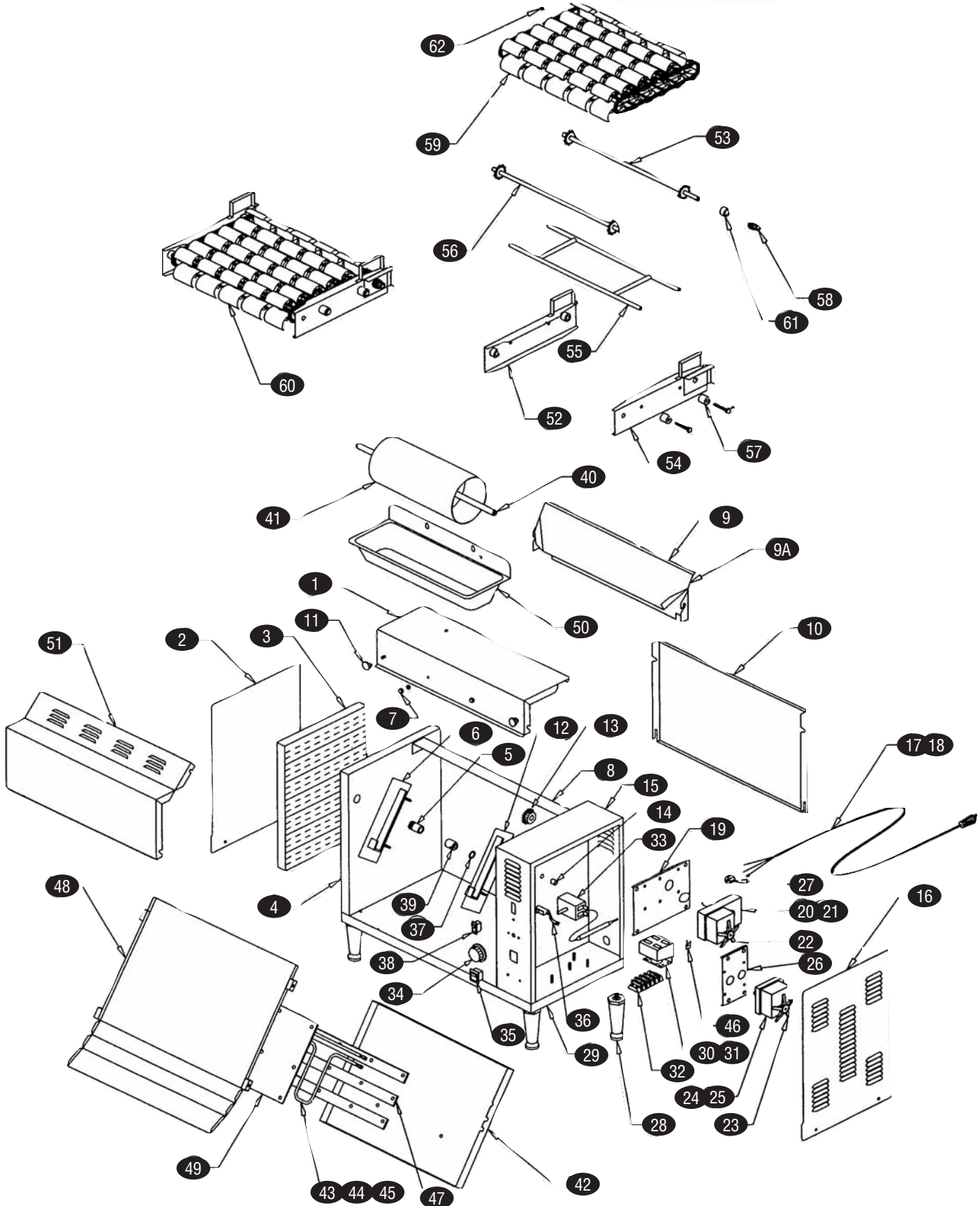


warming

TOASTERS

BUN TOASTER M-83

HAGAR





| KEY | PART # | DESCRIPTION | KEY | PART # | DESCRIPTION |
|-----|----------|-----------------------------------|-----|----------|------------------------------|
| 1 | APW83028 | Top Front Panel | 48 | APW83017 | Grill Plate |
| 2 | APW85800 | Inspection Panel, LH | 49 | APW83030 | Aluminum Transfer Plate |
| 3 | APW83047 | Insulation, LH Panel | 50 | APW83035 | Butter Pan |
| 4 | APW83012 | Outer Panel, LH | 51 | APW83003 | Bottom Front Panel |
| 5 | APW85210 | BR Idler Bushing | 52 | APW83041 | Chain Ride, LH |
| 6 | APW83056 | Hanger Plate, LH | 53 | APW85120 | Drive Shaft Assembly |
| 7 | APW87074 | Hanger Pin w/Head | 54 | APW83029 | Chain Ride, RH |
| 8 | APW83048 | Top Brace | 55 | APW85215 | Inner Brace |
| 9 | APW83113 | Top Back Panel Bun Chute | 56 | APW85119 | Idler Shaft Assembly |
| 9A | APW89525 | Super Chute | 57 | APW85228 | Conveyor Knob |
| 10 | APW83043 | Bottom Back Panel | 58 | APW85033 | Conveyor Gear, 13 Tooth |
| 11 | APW89165 | Knob, Panels | 58A | APW85038 | Conveyor Gear, 16 Tooth |
| 12 | APW83055 | Hanger Plate, RH | 58B | APW85030 | Conveyor Gear, 15 Tooth |
| 13 | APW85032 | Motor Drive Gear, 19 Tooth | 58C | APW85046 | Conveyor Gear, 11Tooth |
| 13A | APW85037 | Motor Drive Gear, 16 Tooth | 58D | APW85043 | Conveyor Gear, 19 Tooth |
| 13B | APW85183 | Motor Drive Gear, 17 Tooth | 59 | APW85124 | Chain & Weight Assembly |
| 13C | APW85047 | Motor Drive Gear, 21 Tooth | 60 | APW83024 | Complete Conveyor Assembly |
| 13D | APW85042 | Motor Drive Gear, 13 Tooth | 61 | APW85115 | Teflon Bearing |
| 14 | APW89110 | Capillary Bushing | 62 | APW85136 | Chain Master Link |
| 15 | APW83011 | Outer Housing, RH | n/s | APW89059 | Lockwasher, #10 |
| 16 | APW85710 | Inspection Panel, RH | n/s | APW89065 | Lock Nut, #10-24 |
| 17 | APW85638 | Power Cord, 120V | n/s | APW89031 | Screw, #10-32x5/16" |
| 18 | APW85640 | Power Cord, 208/240V | n/s | APW89088 | Screw, #8-32x1-1/4" |
| 19 | APW83053 | Motor Mount Plate, Conveyor Motor | n/s | APW89090 | Set Screw, #10-32x3/16" |
| 20 | APW85178 | Conveyor Motor, 120V | n/s | APW89076 | Lockwasher, 1/4" |
| 21 | APW85195 | Conveyor Motor, 208/240V | n/s | APW89003 | Bolt, H-Frame, 1/4"-20x1/2" |
| 22 | APW85162 | Fan, Conveyor Motor | n/s | APW89062 | Hex Nut, #10-32 |
| 23 | APW85161 | Fan, BR Motor | n/s | APW89071 | Flat Washer, #10 |
| 24 | APW85175 | BR Motor, 120V | n/s | APW89030 | Screw, #10-32x3/4" |
| 25 | APW85197 | BR Motor, 208/240V | n/s | APW89054 | Hex Nut, #6-32 |
| 26 | APW83001 | Motor Mount Plate, BR Motor | n/s | APW85003 | Tinnerman Clip |
| 27 | APW89111 | Strain Relief Bushing | n/s | APW89061 | Hex Nut, #10-24 |
| 28 | APW87320 | Leg | n/s | APW89050 | Screw, #6-32x3/16" |
| 29 | APW83006 | Base Plate | n/s | APW89097 | Bolt, #10-32x5/8" |
| 30 | APW87071 | Relay, 120V | n/s | APW89046 | Lockwasher, #8 |
| 31 | APW87438 | Relay, 208/240V | n/s | APW89063 | Hex Nut, #8-32 |
| 32 | APW89145 | Terminal Block | n/s | APW89000 | Bolt, 1/4"-20x1-1/4" |
| 33 | APW60320 | Thermostat | n/s | APW83032 | Wire Harness, 120V |
| 34 | APW60321 | Thermostat Knob | n/s | APW87448 | Teflon Sheet |
| 35 | APW89406 | Main Power Switch | n/s | APW89003 | Screw, "H" Frame, 1/4"-20x1" |
| 36 | APW55632 | Indicator Light | n/s | APW85135 | Drive Chain |
| 37 | APW83051 | Nyliner Bushing | n/s | APW85136 | Master Cink |
| 38 | APW89408 | Motor Switch | | | |
| 39 | APW83050 | BR Drive Bushing | | | |
| 40 | APW85174 | BR Shaft Assembly | | | |
| 41 | APW85173 | BR Cylinder | | | |
| 42 | APW83021 | Element Cover | | | |
| 43 | APW85632 | Heating Element, 120V | | | |
| 44 | APW85633 | Heating Element, 208V | | | |
| 45 | APW85634 | Heating Element, 240V | | | |
| 46 | APW89120 | Jiffy Clip | | | |
| 47 | APW83020 | Element Bracket | | | |