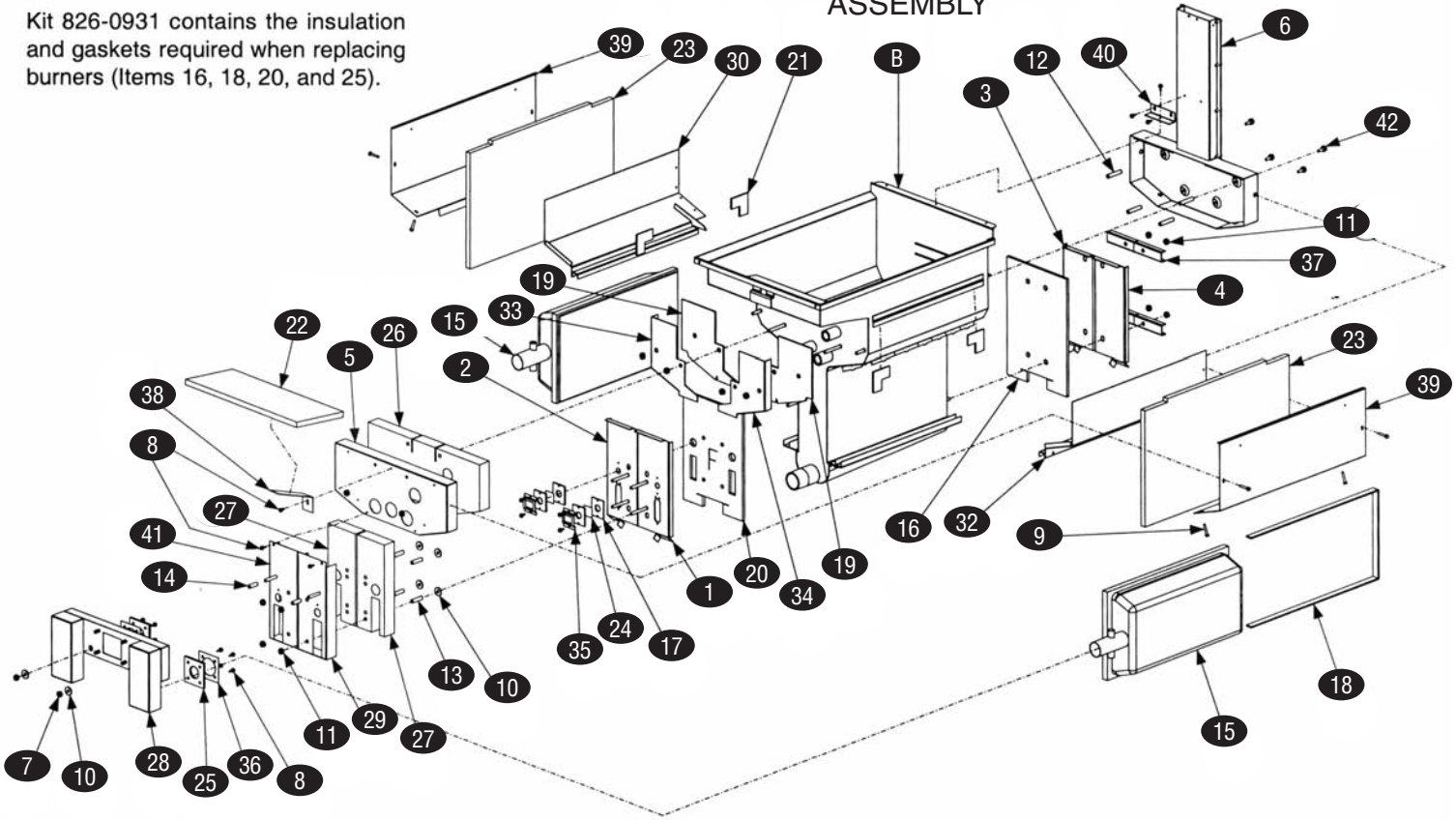


**NOTE:** All insulation and gaskets can be ordered in a single kit, P/N 826-0929.

Kit 826-0931 contains the insulation and gaskets required when replacing burners (Items 16, 18, 20, and 25).

### FRYPOT ASSEMBLY



KEY	PART #	DESCRIPTION	KEY	PART #	DESCRIPTION
B	FM106-1049SP	Full Vat Frypot Assembly, Complete	22	FM812-0993	Insulation, Upper Oil Zone
1	FM823-3316	Retainer, Right Lower Front Insulation, (before 09/01 use 200-0934)	23	FM812-1029	Insulation, Combustion Chamber Side
2	FM823-3315	Retainer, Left Lower Front Insulation, (before 09/01 use 200-0935)	24	FM814-0048SP	Sight Glass
3	FM200-0936	Back, Combustion Chamber, Left	25	FM816-0057	Gasket, Plenum Chamber
4	FM200-0937	Back, Combustion Chamber, Right	26	FM816-0560	Insulation, Upper Front
5	FM200-2227	Retainer, Upper Front Insulation	27	FM816-0561	Insulation, Combustion Chamber, Outer
6	FM106-1019SP	Flue Assy, Full Vat, (before 09/01 use 806-5859SP)	28	FM823-0969	Plenum, Full Vat, (for CE units use 823-1048)
7	FM826-1372	Nut, Hex Head Grip, 1/4"-20	29	FM823-3304	Combustion Chamber, Right Outer Front, (before 09/01 use 823-1169SP)
8	FM826-1371	Screw, Hex Head Drill Point, #8x1/2"	30	FM823-1777	Burner Rail, Left
9	FM809-0362	Screw, Hex Head Drill Point, #8x1-1/4"	32	FM823-3142	Burner Rail, Right
10	FM826-1383	Washer, 3/4"ODx1/4"ID, S/S	33	FM824-0863	Retainer, Left Front Seal Insulation
11	FM809-0804	Nut, Washer-Face Lock, 1/4"-20	34	FM824-0864	Retainer, Right Front Seal Insulation
12	FM810-0406	Spacer, 1/4"x1-1/2"L	35	FM900-1031	Retainer, Sight Glass, 3/4"
13	FM826-1340	Spacer, 1/4"x1-3/16"L	36	FM900-1049	Retainer, Plenum Chamber Gasket
14	FM810-0500	Spacer, 1/4"x15/16"L	37	FM900-1221	Retainer, Back Rear Insulation & Combustion Chamber
15	FM826-1072	Burner, Natural or Propane, Universal	38	FM900-1515	Brace, Upper Oil Zone Insulation
16	FM812-0355	Insulation, Lower Rear	39	FM900-4452	Retainer, Combustion Chamber Side Insulation
17	FM812-0356	Insulation, Sight Glass Gasket	40	FM930-0818	Bracket, Flue to Frypot Connection
18	FM812-0357	Insulation, Burner, 1/2"x36"	41	FM823-3305	Combustion Chamber, Left Outer Front, (before 09/01 use 823-11691SP)
19	FM812-0404	Insulation, Front Seal	42	FM809-0500	Screw, Hex Washer Head, #10x1/2"
20	FM812-0457	Insulation, Lower Front	n/s	FM900-0857	Brace, Frypot to Cabinet
21	FM812-0706	Insulation, Upper Burner Rail			