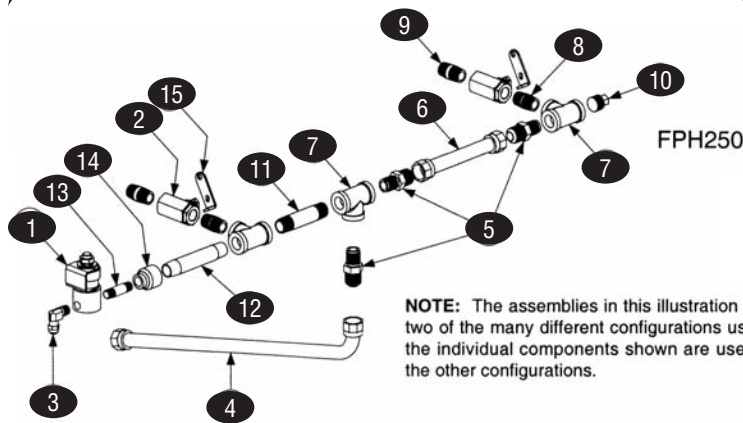


Cooling

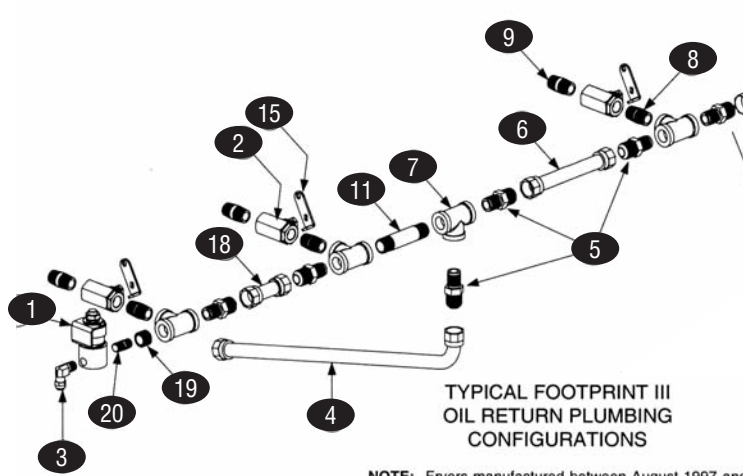
H50 - POWER SHOWER & OIL RETURN



FRYERS

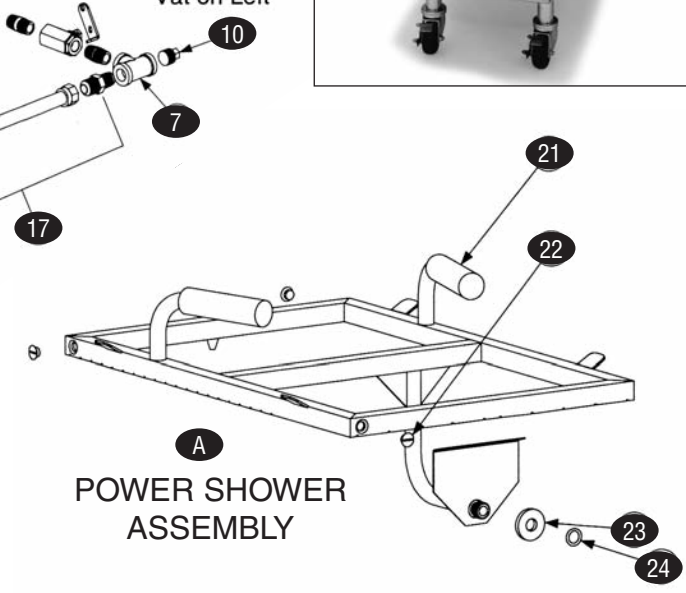


NOTE: The assemblies in this illustration represent only two of the many different configurations used. However, the individual components shown are used to create all the other configurations.



NOTE: Fryers manufactured between August 1997 and April 1998 had a one-piece welded oil return manifold. These manifolds have been discontinued and are no longer available. The fittings and flexlines shown in this illustration must be used to replace failed manifolds.

FPH350 with Dual Vat on Left



KEY	PART #	DESCRIPTION	KEY	PART #	DESCRIPTION	
1	FM807-2484	Valve, Solenoid, 1/4", 24V			NOTE: Items below may also be used in some specially configured Units. When ordering a Flexline, we recommend that the line be measured (outside to outside of Flare Fittings) ensuring correct item is ordered.	
2	FM810-0278	Valve, Oil Return, 1/2"				
3	FM810-1372	Fitting, 1/4" NPT x 90°				
4	FM810-1400	Flexline, Oil Return, 21"				
5	FM810-1668	Adapter, Male, 1/2" NPT, converts Female to Male	n/s	FM810-1160		Flexline, Oil Return, 3"
6	FM810-1680	Flexline, Oil Return, 6.5"	n/s	FM810-1339		Flexline, Oil Return, 4.5"
7	FM813-0003	Tee, 1/2" NPT	n/s	FM810-1159		Flexline, Oil Return, 5"
8	FM813-0022	Nipple, 1/2" NPT x Close	n/s	FM810-1067		Flexline, Oil Return, 8.5"
9	FM813-0087	Nipple, 1/2" NPT x 1.5"	n/s	FM810-1043		Flexline, Oil Return, 9.5"
10	FM813-0156	Plug, 1/2" NPT	n/s	FM810-1055		Flexline, Oil Return, 11.5"
11	FM813-0247	Nipple, 1/2" NPT x 3.5"	n/s	FM810-1369		Flexline, Oil Return, 17.5"
12	FM813-0251	Nipple, 1/2" NPT x 4.5"	n/s	FM810-1068		Flexline, Oil Return, 21.5"
13	FM813-0537	Nipple, 1/4" NPT x 2"	n/s	FM810-1069		Flexline, Oil Return, 29.5"
14	FM813-0555	Reducer, 1/2" to 1/4" NPT	n/s	FM810-1056		Flexline, Oil Return, 52.5"
15	FM902-0883	Handle, Right Oil Return Valve	n/s	FM810-1669		Adapter, Female, 1/2" NPT, converts Male to Female
16	FM810-1057	Flexline, Oil Return, 13.0"	n/s	FM901-0883		Handle, Left Oil Return Valve, mirror of #15
17	FM806-9437SP	Flexline Assy, Oil Return, 15.5", 2 of #5 plus #16	A	FM806-4442SP		Power Shower Assy, Complete, Full Vat
18	FM810-1160	Flexline, Oil Return, 3.0"	21	FM814-0001		Grip, Handle
19	FM813-0304	Reducer, Bushing, 1/2" to 3/4" NPT	22	FM809-0415		Screw, Clean Out
20	FM813-0016	Nipple, 1/4" NPTxClose	23	FM826-1390		Seal, Gasket, pkg of 5
			24	FM826-1344	O-Ring, pkg of 5	