



REPLACEMENT PARTS CATALOG

M-95-3

WENDY'S CONVEYOR TOASTERS

M-95-3 M953CCWD - 208V, 60HZ

M-95-3 M953ECWD - 240V, 60HZ

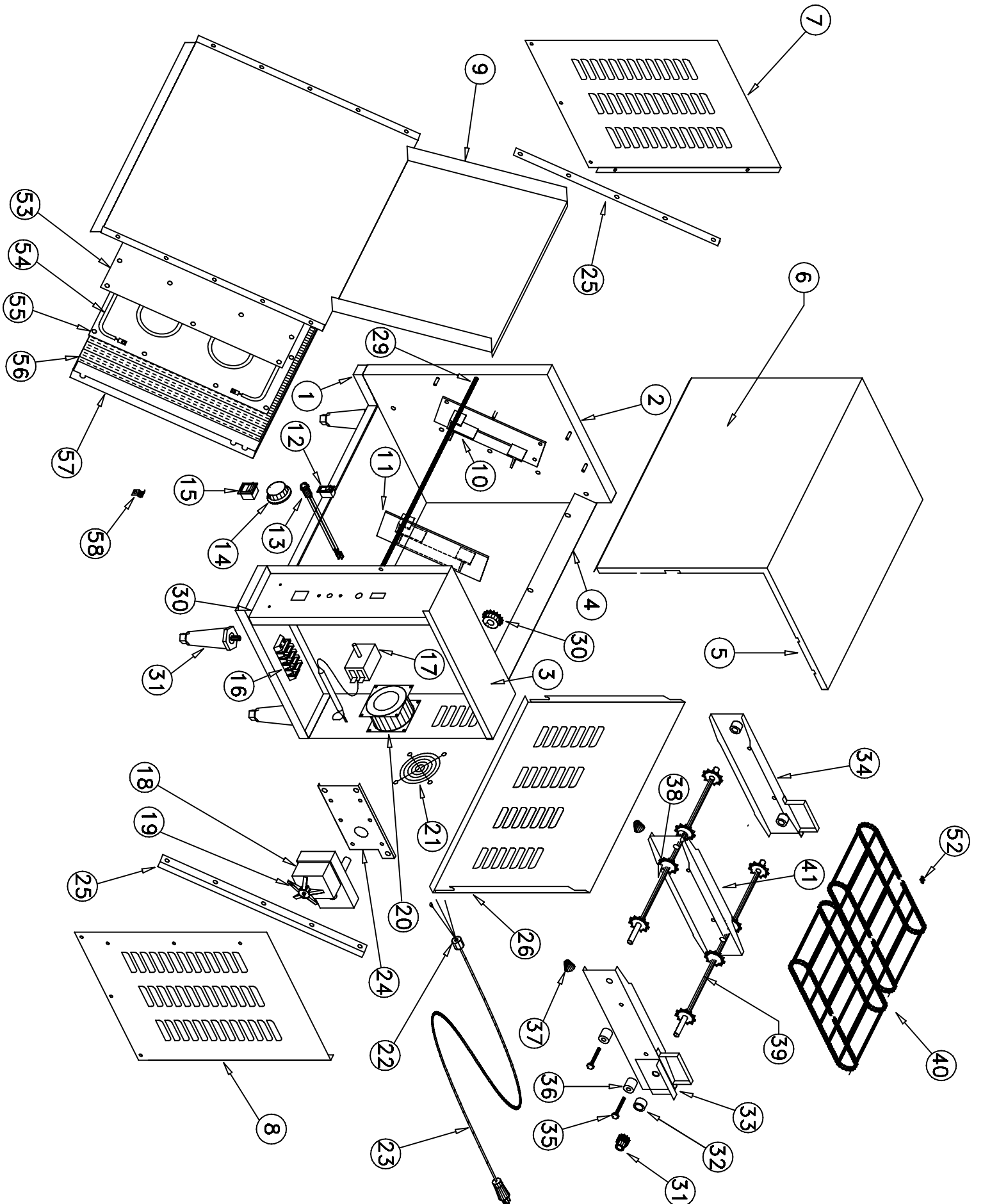
M-95-3 M953FCWD - 240V, 50HZ

APW / Wyott
FOOD SERVICE EQUIPMENT CO.
DALLAS, TX.75226

WENDY'S M-95-3 CONVEYOR TOASTERS

Part No. 67159 – Rev. 3/2000

| <u>ITEM NO</u> | <u>STOCK NO</u> | <u>DESCRIPTION</u> | <u>ITEM NO</u> | <u>STOCK NO</u> | <u>DESCRIPTION</u> |
|----------------|---|------------------------------------|----------------|-----------------|----------------------------|
| 1 | 84180 | M95-3 BASE ASSEMBLY | 32 | 85115 | BUSHING DRIVE TEFLON |
| 2 | 84115 | LEFT INSIDE PANEL | 33 | 84133 | RIGHT CONVEYOR SIDE |
| 3 | 84118 | RIGHT INSIDE PANEL | 34 | 84135 | LEFT CONVEYOR SIDE |
| 4 | 84192 | M95-3 BACK BRACE | 35 | 89000 | BUSHING BOLT |
| 5 | 84102 | FRONT COVER | 36 | 85228 | BUSHING |
| 6 | 84104 | FRONT COVER LABEL | 37 | 89165 | KNOB BACK COVER |
| 7 | 84149 | LEFT SIDE PANEL | 38 | 84536 | LOWER CONVEYOR ROD |
| 8 | 84146 | RIGHT SIDE PANEL | 39 | 84520 | UPPER CONVEYOR ROD |
| 9 | 84188 | M95-3 GRILL PLATE | 40 | 84530 | CONVEYOR CHAIN |
| 10 | 83065 | LEFT HANGER BRACKET | 41 | 84525 | CONVEYOR DIVIDER |
| 11 | 83061 | RIGHT HANGER BRACKET | 42 | 84523 | ROD CHAIN ADJUSTMENT |
| 12 | 89408 | MOTOR SWITCH | 43 | 85228 | KNOB, HANGER |
| 13 | 56530 | INDICATOR LAMP | 44 | 84548 | RH ADJUSTER ROD |
| 14 | 60352 | KNOB FOR THERMOSTAT | 45 | 84549 | LH ADJUSTER ROD |
| 15 | 89406 | MAIN POWER SWITCH | 46 | 84577 | RH BRACKET |
| 16 | 89145 | TERMINAL BLOCK | 47 | 84576 | LH BRACKET |
| 17 | 56527 | THERMOSTAT | 48 | 87145 | SPROCKET |
| 18 | 85178 | 2.0 RPM DRIVE MOTOR 115V | 49 | 88702 | THUMBSCREW |
| | 85195 | 2.0 RPM DRIVE MOTOR 208-230V, 60HZ | 50 | 88962 | SPRING DISC |
| | 85205 | 2.0 RPM DRIVE MOTOR 208-230V, 50HZ | 51 | 84591 | RING RETAINER |
| 19 | 85209 | FAN FOR DRIVE MOTOR | 52 | 85136 | CHAIN MASTER LINK |
| 20 | 85280 | COOLING FAN 115V,USES CORD 85285 | 53 | 84139 | HEAT TRANSFER PLATE |
| | 85281 | COOLING FAN 208-230V | 54 | 84198 | HEATING ELEMENT 115V |
| 21 | 85282 | FAN GUARD | | 84199 | HEATING ELEMENT 208V |
| 22 | 89111 | STRAIN RELIEF | | 84197 | HEATING ELEMENT 220-240V |
| 23 | 55310 | POWER CORD 115V NEMA 5-15p | 55 | 84168 | HEATING ELEMENT CLAMP |
| | 85640 | POWER CORD 208-230V, NEMA 6-15P | 56 | 84167 | HEATING ELEMENT INSULATION |
| 24 | 84151 | DRIVE MOTOR MOUNT BRACKET | 57 | 84141 | HEATING ELEMENT COVER |
| 25 | 84155 | SIDE SUPPORT ANGLE | 58 | 89120 | THERMOSTAT BULB CLAMP |
| 26 | 84187 | M95-3 BACK PANEL | | | |
| 27 | 84161 | CONTROL PANEL | | | |
| 28 | 87321 | LEG (EA.) | | | |
| 29 | 84178 | M95-3 CROSS ROD | | | |
| 30 | NUMBER BELOW IN () IS MATCHING CONV. GEAR SIZE | | | | |
| | 85042 | DRIVE GEAR 13T (19) | | 83753 | WIRE SET |
| | 85037 | DRIVE GEAR 16T (16) | | 89029 | SCREW FOR BACK PANEL |
| | 85183 | DRIVE GEAR 17T (15) | | 88961 | GREEN GROUND NUT |
| | 85032 | DRIVE GEAR 19T (13) | | 88993 | 10-32 X 3/8 SCREW |
| | 85047 | DRIVE GEAR 21T (11) | | 88994 | 10-32 X 3/16 SS SET SCREW |
| | | | | 89031 | 10-32 X 5/16 PHL SS SCREW |
| | | | | 89054 | 6-32 KEPS NUT |
| | | | | 89061 | 10-24 HEX NUT |
| | | | | 89071 | 10 FLAT WASHER |
| | | | | 89076 | 1/4 INT STAR WASHER |
| | | | | 89163 | 1/4-20 SS JAM NUT |
| | | | | 84165 | CONTROL PANEL LABEL |
| | | | | 88923 | 8-32 X 1 SCREW |
| | | | | 89063 | 8-32 HEX NUT |
| | | | | 89140 | CABLE TIE |
| | | | | 88894 | 1/4-20 X 7/8 PRESS STUD |
| 31 | NUMBER BELOW IN () IS MATCHING DRIVE GEAR SIZE | | | | |
| | 85046 | CONVEYOR GEAR 11T (21) | | | |
| | 85033 | CONVEYOR GEAR 13T (19) | | | |
| | 85030 | CONVEYOR GEAR 15T (17) | | | |
| | 85038 | CONVEYOR GEAR 16T (16) | | | |
| | 85043 | CONVEYOR GEAR 19T (13) | | | |



M-95 DRY WIRING DIAG.

AMERICAN PERMANENT WARE, INC.
729 THIRD AVENUE
DALLAS, TX. 75226

