



30 Pine Street • New Rochelle • New York • 10801

1 - 914 / 576 - 0200

1 - 914 / 576 - 0605 fax

1 - 800 - 431 - 2745 US & Canada

www.bakerspride.com web address

EP, EB & ER 3836/5736

Electric Deck Oven

PARTS LIST

SUPERDeck SERIES



Model Number: **EP, EB & ER 3836** **8"**

EP, EB & ER 5736 **12"**

Serial Number: _____

Voltage/Phase

208V/1 208V/3

240V/1 240V/3

EP, EB & ER 3836/5736

Electric Deck Oven

30 Pine Street • New Rochelle • New York • 10801

1 - 914 / 576 - 0200

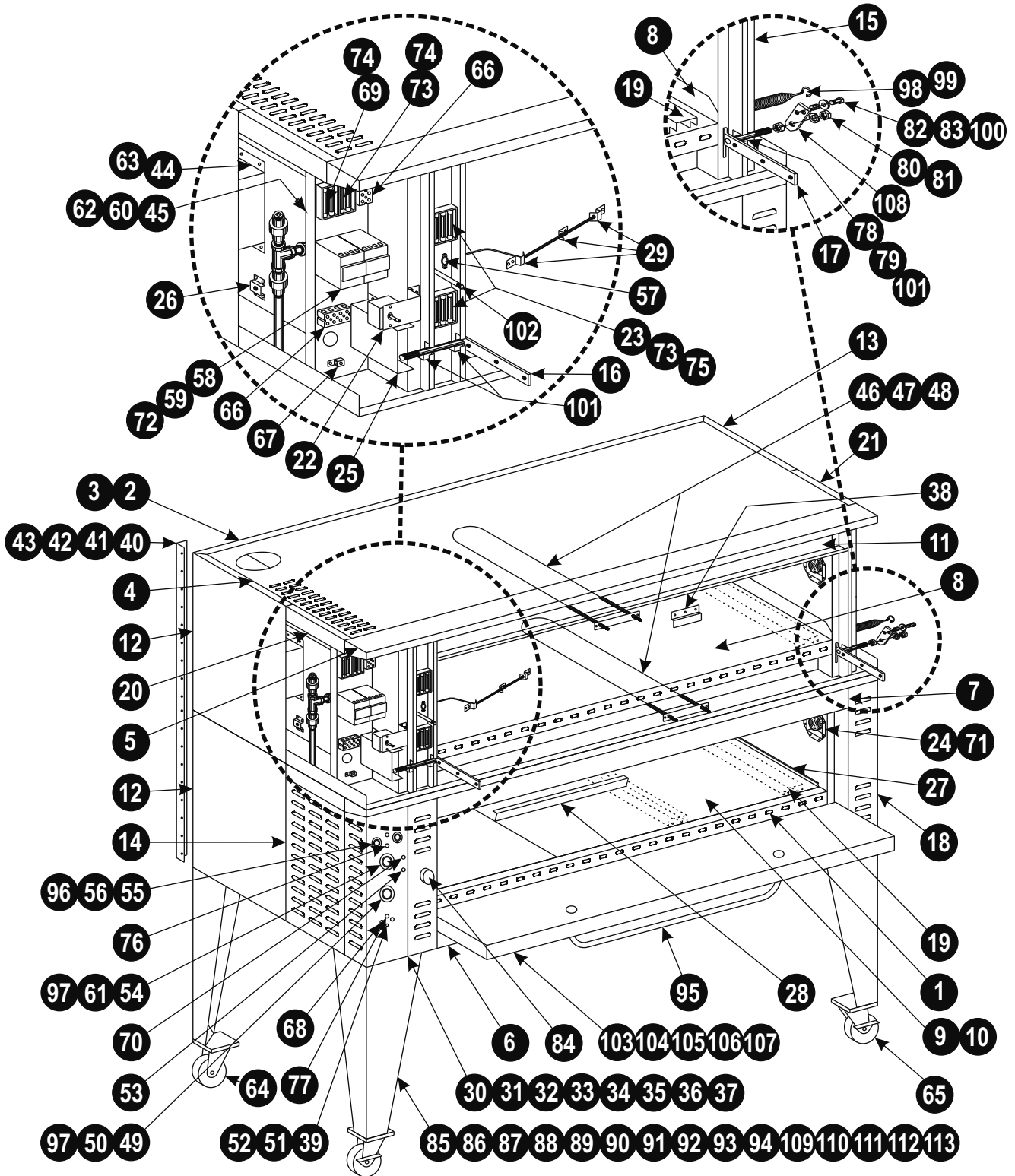
1 - 914 / 576 - 0605 fax

1 - 800 - 431 - 2745 US & Canada

www.bakerspride.com web address



EXPLODED VIEW



PARTS LIST

Item	3836	5736	Description	Item	All Mdl's	Description
1	C4038K	C4039K	Deck Trim	57	M1370A	Hi-Limit Switch 140C 240/120V 10/15A
2	C4049U	C4050U	Outer Back Asm 8"	58	M1371A	Contactora 4 Pole 600V 25A 208V 50/60 Hz
3	C4142U	C4143U	Outer Back Asm 12"	59	M1372A	Contactora 4 Pole 600V 25A 220-240V 50/60 Hz
4	C4056U	C4057U	Outer Top Asm	60	M1387A	Solenoid Valve 1/2B 1/2P
5	C4067K	C4068K	Top Trim	61	M1374A	Electric Timer 250V 5 Hour
6	C4077K	C4078K	Bottom Apron	62	M1388A	Solenoid Coil 208-240V 50/60Hz
7	C4079K	C4080K	Top Apron	63	M1376A	Transformer 480/240V 0.25KVA
8	T1224U	T1225U	Steel Deck Asm	64	S1022X	Caster 4" No Lock (each)
9	T1232Y	T1232X	Hearth Baking Deck (Set/2 for 3836 - Set/3 for 5736)	65	S1023X	Caster 4" w/Lock (each)
10	T1232A	T1232A	Hearth Baking Deck 19 x 36 x 1 (each)	66	P1004A	Terminal Block 4 Pole 600V 85A
11	S6060Y	S6060X	Insulation Needled Blanket 1"	67	P1025A	Grounding Lug 140A
12	C4047K	C4140K	Outer Side LH	68	M1049X	PB Switch SPST Mom Contact 250/125V 3/6A (Steam)
13	C4048K	C4141K	Outer Side RH	69	P1118A	Fuse KTK Class CC 600V 10A
14	C4053K	C4144K	Access Cover LH	70	P1128A	Indicator Lamp 1/2" 250V 1/3W Green (Timer)
15	C4054K	C4145K	Access Cover RH	71	P1145A	Lamp Asm 240V 15W
16	S3242U	S3244U	Door Arm Asm LH		P1147X	Bulb, 240V 15W
17	S3243U	S3245U	Door Arm Asm RH	72	P1150A	Mounting Strip for Contactors
18	C4076K	C4146K	Front Column RH	73	P1164A	Fuse KTK Class CC 600V 30A
19	C4040K		Deck Support	74	P1165A	Fuse Block 2 Pole 600V 30A
20	C4059K		Side Top Trim LH (All)	75	P1166A	Fuse Block 3 Pole 600V 30A
21	C4060K		Side Top Trim RH (All)	76	P1167A	Indicator Lamp 1/2" 250V 1/3W Amber (Heat selector)
22	C4069K		Thermostat Bracket	77	P1168A	Indicator Lamp 1/2" 250V 1/3W Red (Steam)
23	C4070U		Fuse Block Bracket Asm	78	Q3001A	Flat Washer 19/32 x 1" x 1/8 (2)
24	C4071K		Lamp Mount	79	Q3002A	Flat Washer 19/32 x 1" x 1/16 (4)
25	C4074K		Spring Guard	80	Q3007A	Split Lock Washer 9/16 (Door Rod)
26	C4075U		Spring Bracket Asm	81	Q2401A	Hexagon Nut 9/16-18 (Door Rod)
27	C4109K		Deck Spacer Side 36"	82	Q3010A	Flat Washer 7/16 x 1" x 5/64 (Bushing/Sleeve)
28	C4110K		Deck Spacer Back 19" (3836-2 needed, 5736-3 needed)	83	Q2301A	Shoulder Bolt 3/8-16 x 1" (Bushing/Sleeve)
29	C4098X		Capillary Clip Kit	84	S1005A	Push-Pull Knob 3/8-16 (Vent)
30	C4100K		Control Panel - Pizza 8" 680F	85	S1018Y	Legs 12" (Set/4 w/Bolts & Washers)
31	U1352A		Overlay (for C4100K)	86	S1018T	Leg 12" (each) w/Bolts & Washers
32	C4089K		Control Panel - Bake 8" 550°F 60 Minute	87	S1004Y	Legs 30" (Set/4) w/Bolts & Washers
33	U1353A		Overlay (for C4089K)	88	S1004X	Leg 30" (each) w/Bolts & Washers
34	C4091K		Control Panel - Roast 12" 550°F 60 Minute	89	S1406Y	Legs 36" (Set/4) w/Bolts & Washers
35	U1355A		Overlay (for C4091K)	90	S1406A	Leg 36" (each) w/Bolts & Washers
36	C4093K		Control Panel - Roast 12" 550°F 5 Hour	91	S1019Y	Legs 6" (Set/4) w/Bolts & Washers
37	U1354A		Overlay (for C4093K)	92	S1019T	Leg 6" (each) w/Bolts & Washers
38	C4095K		Steel Deck Clip (3836-2 needed, 5736-3 needed)	93	S1251Y	Legs 24" (Set/4) w/Bolts & Washers
39	C4103K		Steam Control Bracket	94	S1251A	Leg 24" (each) w/Bolts & Washers
40	C4105K		Stacking Bracket E-PB-2 (set/2) w/Screws	95	S1196A	Door Handle 30" w/Screws
41	C4106K		Stacking Bracket E-R-2 (set/2) w/Screws	96	S1205A	Knob 1/4 D (Heat Selector)
42	C4107K		Stacking Bracket E-PB-3 (set/2) w/Screws	97	S1311A	Knob 1/4 D (Timer/Thermostat))
43	C4108K		Stacking Bracket E-R-3 (set/2) w/Screws	98	S3004A	Door Spring 13/16 x 6-3/4
44	C4113U		Transformer Bracket Asm	99	S3003A	Door Spring 1-1/8 x 9-3/4
45	C4161K		Solenoid Bracket	100	S3108A	Bushing/Sleeve Asm
46	L1178A		Heater Element 1000W 230V (each) w/Cap	101	S3239A	Bearing Block 1 x 1 x 1/2 Bronze
47	L1179A		Heater Element 1000W 208V (each) w/Cap	102	S3241A	Flue Rod 3/8-16 x 37"
48	L1180A		Heater Element 1000W 460V (each) w/Cap	103	U1043A	Bakers Pride Logo 13-1/4
49	M1192A		Thermostat 3 Pole 800F 300V 16A	104	C4085T	Door Asm 3836-8" w/o Door Arm Asm's
50	M1369A		Thermostat 3 Pole 550F 300V 16A	105	C4086T	Door Asm 5736-8" w/o Door Arm Asm's
51	M1176A		Potentiometer (Steam)	106	C4151T	Door Asm 3836-12" w/o Door Arm Asm's
52	M1231A		Timer SS (Steam)	107	C4152T	Door Asm 5736-12" w/o Door Arm Asm's
53	M1259A		Toggle Switch DPST on-off 250/125V 10/15 A (Light)	108	A3295E	Spring Lever
54	M1382A		Electric Timer, 250V, 60 Minute	109	S1075X	S/S Leg Wrap 6" (Set/2)
55	M1367A		Infinite Switch 208V 25A (Top & Bottom Heat Control)	110	S1076X	S/S Leg Wrap 12" (Set/2)
56	M1368A		Infinite Switch 240V 25A (Top & Bottom Heat Control)	111	S1331X	S/S Leg Wrap 24 1/2" (Set/2)
				112	S1078X	S/S Leg Wrap 30" (Set/2)
				113		S/S Leg Wrap 36" (Set/2)

