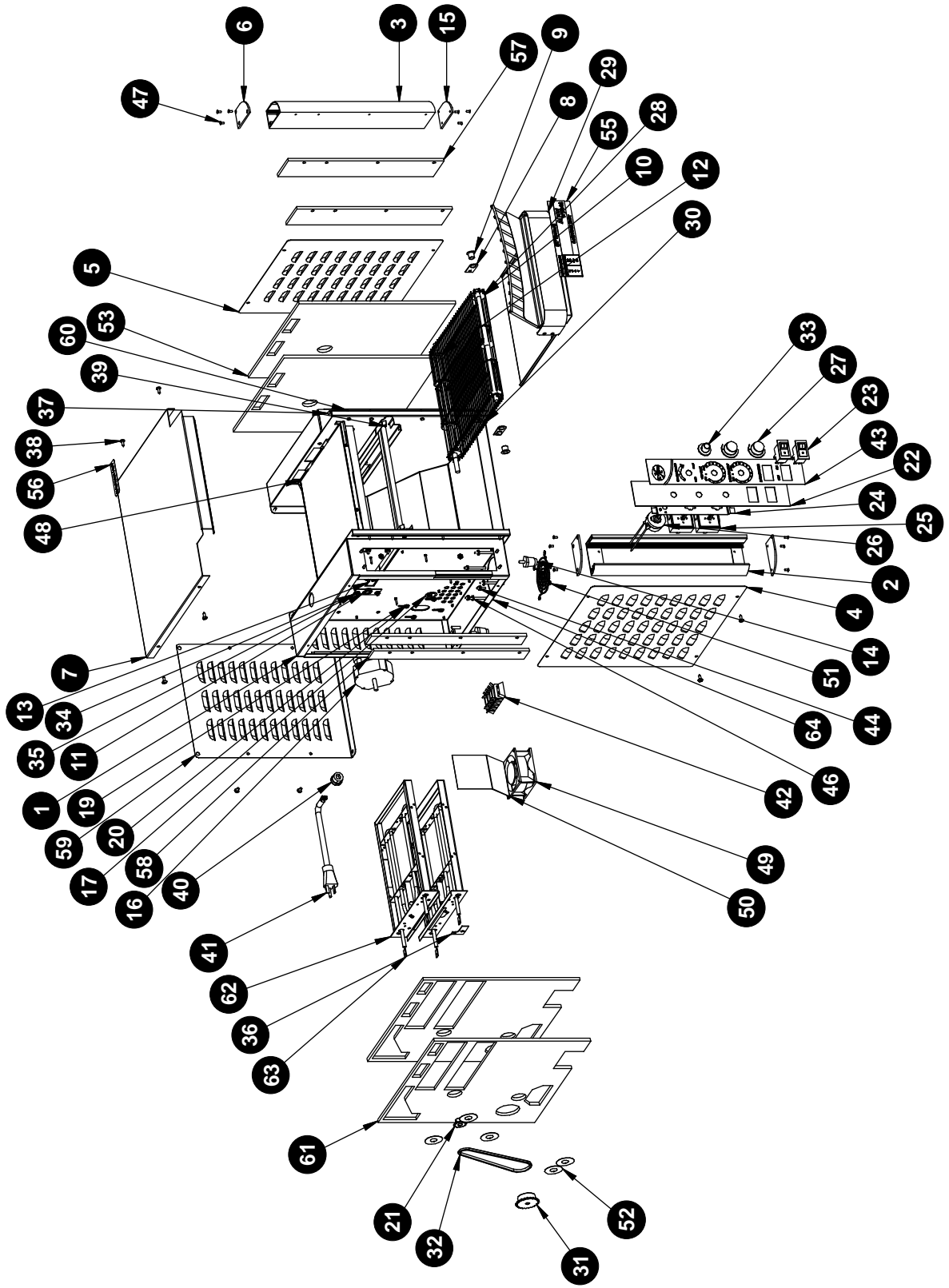


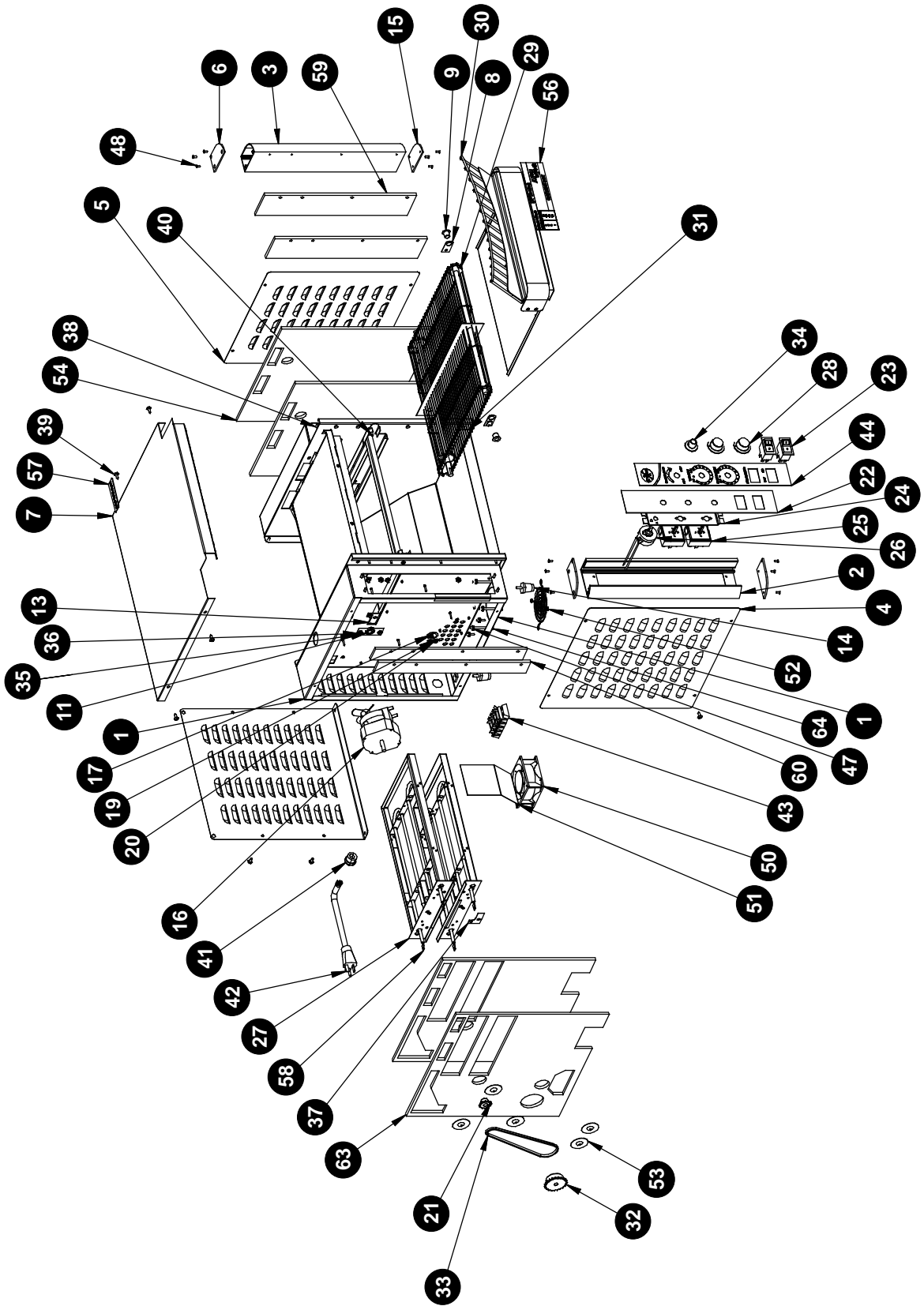
# 8. PARTS LISTS & EXPLODED VIEWS

## XTRM-2 EXPLODED VIEW



ITEM	PART NUMBER	DESCRIPTION (XTRM-2 PARTS LIST)	QUANTITY
1	93000040	XTRM 2, RIVIET ASSEMBLY	1
2	93000158	XTRM-2&3 CONTROL PANEL EXTRUSION	1
3	93000159	EXTRUSION, XTRM 2&3	1
4	93000116	XTRM-2&3, PANEL, LEFT OUTER	1
5	93000115	XTRM-2&3, PANEL, RIGHT SIDE	1
6	93000225	END CAP, F/L & B/R	2
7	93030181	COVER, TOP, XTRM 2	1
8	38130	ASSY, CLIP BEARING	2
9	38125	BEARING FLANGED POLYMER	2
10	38122	WASSY IDLER SHAFT	1
11	83248	BEARING, SHAFT	2
12	83956	DRIVE SHAFT ASSY AT-10 SEGMENTED BELT	1
13	83868	SPACER, CONVEYOR SHAFT	2
14	83267	LEG 1" PLASTIC W/CHROME	4
15	93000226	END CAP, B/L & F/R	2
16	85149	MOTOR, AT'S 208/240V 60HZ VARIABLE	1
	85144	MOTOR, AT'S 230V 60HZ VARIABLE	1
17	89184	BUSHING, .875 HEYCO 2126	1
18*	85284	FAN, COOLING 4.5" 105CFM 208/230V	1
19	89076	WASHER, LOCK 1/4 INTERNAL	4
20	89030	SCREW, 10-32X3/4	4
21	83261	SPROCKET, 12 TOOTH 1/4 PITCH 3/8 BORE	1
22	93200061	ASSY, PLATE, CONTROLS	1
23	70444800	SWITCH, ROCKER ON-OFF	2
24	93200066	PLATE, SPACE, CONTROLS	1
25	69104-EGO	INFINITE SWITCH-EGO (208V)	2
	69103-EGO	INFINITE SWITCH-EGO (230/240V)	2
26	83333	RHEOSTAT 208/240 V. PIGGY-BACK TERM	1
27	88705	KNOB 039-266 8A BLACK	2
28	93000206	BELT, WIRE 27x.05 3 SEG.	1
29	93100065	ASSY, XTRM 2 FEEDER	1
30	93100197	DRAWER TOAST	1
31	93000233	SPROCKET, 32 TOOTH 1/4 PITCH	1
32	93000302	CHAIN, 1/4" DRIVE 67 PITCH	1
33	75617	KNOB W/NO'S. 0 TO 9	1
34	83821	BRACKET, BEARING	2
35	89061	NUT, HEX 10-24	10
36	93000194	XTRM 2&3, SMALL ELEMENT COVER	4
37	89073	SCREW, #8 X 1/2 HEX TAPIT SHT MTL TYPE AB	10
38	88889	SCREW #8 X 1/2 AB SMS PHL TRUSS LGM NI PLT	14
39	81600087	SCREW, 8-32 x 3/8, PHILLIPS, PAN HEAD	2
40	89111	BUSHING, STRAIN RELIEF SR-7W-2	1
41	83277	CORDSET, ASSY 208/240V (CORD 85640)	1
42	89145	TERMINAL BLOCK 300V-30AMPS	1
43	93200064	LABEL, XTRM CONTROL	1
44	89054	NUT, KEPS 6-32	2
45*	85287	FAN GUARD	1
46	89063	NUT, HEX 8-32	9
47	94000114	SCREW, COUNTERSINK, 6-32X5/16,Z,BLK	12
48	93200084	XTRM-3, INSULATION CENTER PANEL	1
49	85281	FAN,COOLING,3" DIA, 208/230V	1
50	93000196	XTRM-2 & 3 AIR DEFLECTOR	1
51	85282	Guard, 3.15 Sq. Fan	1
52	88940	WASHER, 1-1/2 RD	9
53	93000232	XTRM-2&3, RIGHT SIDE INSULATION	2
54*	89039	SCREW, 8-32X5/16 PH PAN SS	2
55	93200303	LABEL, SPEED GUIDCAUTION HOT!	1
56	58081	LABEL, CAUTION HOT!	1
57	93000230	XTRM-2&3, RIGHT EXTRUSION INSULATION	2
58	93000231	XTRM-2&3, LEFT EXTRUSION INSULATION	2
59	93000199	XTRM 2, BACK COVER	1
60	93000229	HEX MACHINE SCREW, #6-32 X 3/4	8
61	93000227	XTRM-2&3, CONTROL BOX INSULATION	2
62	93000186	XTRM-2, ELEMENT RACK	2
63	54093	ELEMENT, 208V-1400W	2
	54094	ELEMENT, 230/240V-1400W	2
64	88951	SCREW, 8-32x2" PHILLIPS PAN MS SS	8
65*	89056	WASHER #8 INTERNAL LOCK, SS	1
66*	69154	THERMOSTAT, THERM-O-DISC W/MOUNT CLIP	1
67*	89182	BUSHING, .5 HEYCO 2058	1
		*NOT SHOWN	

XTRM-3 EXPLODED VIEW



ITEM	PART NUMBER	DESCRIPTION (XTRM-3 PARTS LIST)	QUANTITY
1	93200040	XTRM 3, RIVLET ASSEMBLY	1
2	93000158	XTRM-2&3 CONTROL PANEL EXTRUSION	1
3	93000159	EXTRUSION, XTRM 2&3	1
4	93000116	XTRM-2&3, PANEL, LEFT OUTER	1
5	93000115	XTRM-2&3, PANEL, RIGHT SIDE	1
6	93000225	END CAP, F/L & B/R	2
7	93230047	COVER, TOP, XTRM 3	1
8	38130	ASSY, CLIP BEARING	2
9	38125	BEARING FLANGED POLYMER	2
10*	93200070	SHAFT, IDLER XTRM	1
11	83248	BEARING, SHAFT	2
12*	83976	ASSEMBLY, DRIVE SHAFT	1
13	83868	SPACER, CONVEYOR SHAFT	2
14	83267	LEG 1" PLASTIC W/CHROME	4
15	93000226	END CAP, B/L & F/R	2
16	85149	MOTOR, AT'S 208/240V 60HZ VARIABLE	1
	85144	MOTOR, AT'S 230V 60HZ VARIABLE	1
17	89184	BUSHING, .875 HEYCO 2126	1
18*	85284	FAN, COOLING 4.5" 105CFM 208/230V	1
19	89076	WASHER, LOCK 1/4 INTERNAL	4
20	89030	SCREW, 10-32X3/4	4
21	83261	SPROCKET, 12 TOOTH 1/4 PITCH 3/8 BORE	1
22	93200061	ASSY, PLATE, CONTROLS	1
23	70444800	SWITCH, ROCKER ON-OFF	2
24	93200066	PLATE, SPACE, CONTROLS	1
25	69104-EGO	INFINITE SWITCH-EGO (208V)	2
	69103-EGO	INFINITE SWITCH-EGO (230/240V)	2
26	83333	RHEOSTAT 208/240 V. PIGGY-BACK TERM	1
27	93200036	XTRM 3, ELEMENT RACK	2
28	88705	KNOB 039-266 8A BLACK	2
29	83880	CONVEYOR BELT 79 LINKS	1
30	93200052	ASSY, XTRM 3 FEEDER	1
31	93200048	XTRM-3, TOASTER DRAWER	1
32	93000233	SPROCKET, 32 TOOTH 1/4 PITCH	1
33	82902	CHAIN, 1/4" DRIVE 67 PITCH	1
34	75617	KNOB W/NO'S. 0 TO 9	1
35	83821	BRACKET, BEARING	2
36	89061	NUT, HEX 10-24	10
37	93000194	XTRM 2&3, SMALL ELEMENT COVER	4
38	89073	SCREW, #8 X 1/2 HEX TAPIT SHT MTL TYPE AB	10
39	88889	SCREW #8 X 1/2 AB SMS PHL TRUSS LGM NI PLT	14
40	81600087	SCREW, 8-32 x 3/8, PHILLIPS, PAN HEAD	2
41	89111	BUSHING, STRAIN RELIEF SR-7W-2	1
42	83277	CORDSET, ASSY 208/240V (CORD 85640)	1
43	89145	TERMINAL BLOCK 300V-30AMPS	1
44	93200064	LABEL, XTRM CONTROL	1
45*	89054	NUT, KEPS 6-32	2
46*	85287	FAN GUARD	1
47	89063	NUT, HEX 8-32	9
48	94000114	SCREW, COUNTERSINK, 6-32X5/16,Z,BLK	12
49*	93200084	XTRM-3, INSULATION CENTER PANEL	1
50	85281	FAN, COOLING, 3" DIA, 208/230V	1
51	93000196	XTRM-2 & 3 AIR DEFLECTOR	1
52	85282	Guard, 3.15 Sq. Fan	1
53	88940	WASHER, 1-1/2 RD	9
54	93000232	XTRM-2&3, RIGHT SIDE INSULATION	2
55*	89039	SCREW, 8-32X5/16 PH PAN SS	2
56	93200303	LABEL, SPEED GUIDCAUTION HOT!	1
57	58081	LABEL, CAUTION HOT!	1
58	54021	ELEMENT, 208V-1650W	2
	54032	ELEMENT, 230/240V-1650W	2
59	93000230	XTRM-2&3, RIGHT EXTRUSION INSULATION	2
60	93000231	XTRM-2&3, LEFT EXTRUSION INSULATION	2
61*	93200199	XTRM 3, BACK COVER	1
62*	93000229	HEX MACHINE SCREW, #6-32 X 3/4	8
63	93000227	XTRM-2&3, CONTROL BOX INSULATION	2
64	88951	SCREW, 8-32x2" PHILLIPS PAN MS SS	8
65*	89056	WASHER #8 INTERNAL LOCK, SS	1
66*	69154	THERMOSTAT, THERM-O-DISC W/MOUNT CLIP	1
67*	89182	BUSHING, .5 HEYCO 2058	1
		*NOT SHOWN	