



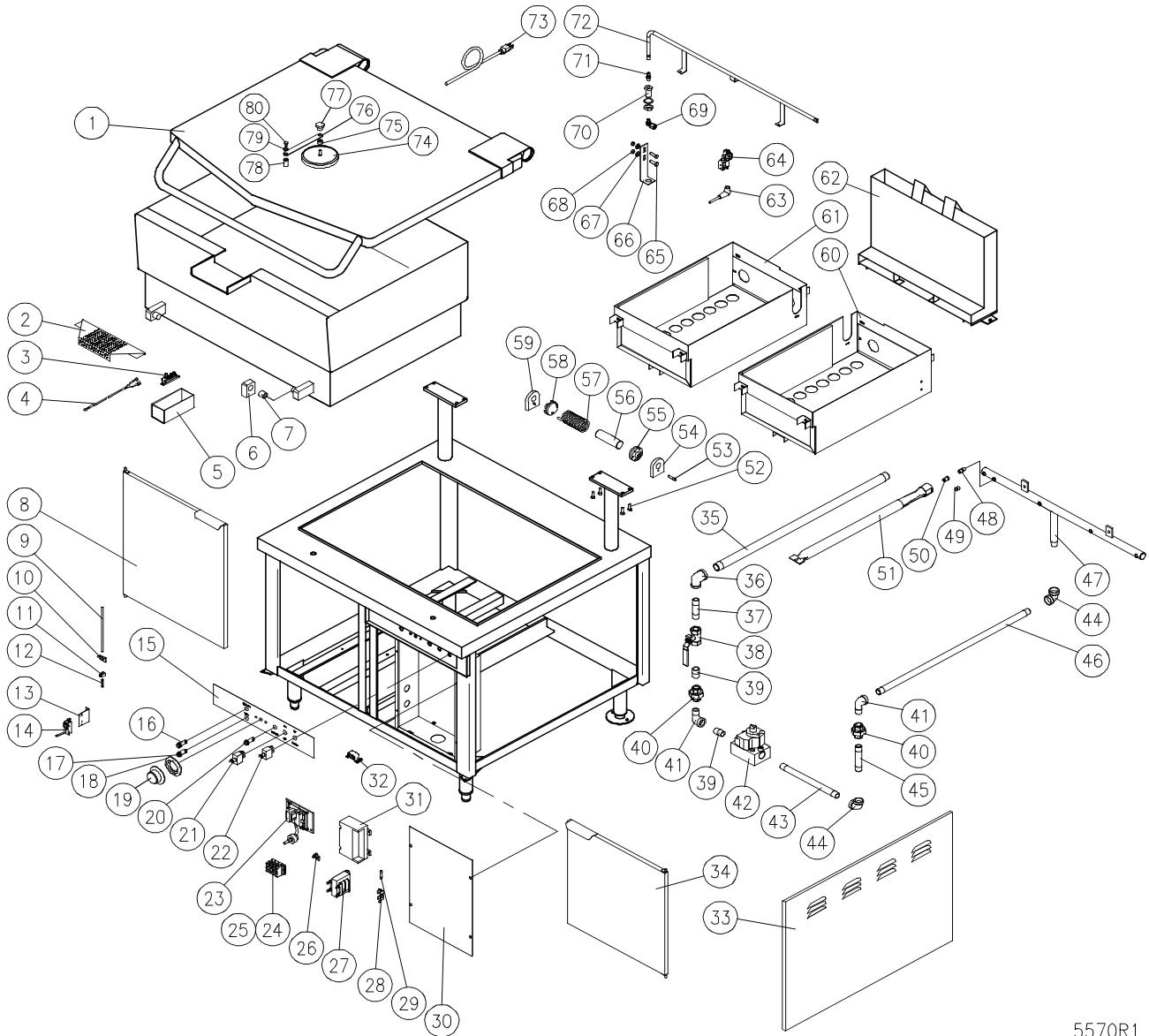
PARTS LIST
GAS TILTING SKILLETS
MODELS: ACGMTS-30
ACGMTS-40



ACCUTEMP PRODUCTS, INC.
8415 North Clinton Park Dr. · Fort Wayne, IN ·
46825 800 210-5907 Office · 260 493-0415 Fax
www.accutemp.net

PARTS LIST, GAS TILTING SKILLET, MODELS ACGMTS-30, ACGMTS-40

FIGURE 1



5570R1

PARTS LIST, GAS TILTING SKILLET, MODELS ACGMTS-30, ACGMTS-40

<u>ITEM</u>	<u>PART NO.</u>	<u>DESCRIPTION</u>	<u>QUANTITY</u>		
			<u>ACGMTS-30</u>	<u>ACGMTS-40</u>	
1.	7386-2	Cover Assembly	1		
	7387-2	Cover Assembly		1	
2.	9-3303	Pour Lip Strainer	1	1	
3.	9-3021	High Limit Thermostat	1	1	
4.	4344-1	Thermocouple	1	1	
5.	2426-1	High Limit Box	1	1	
6.	3703-1	Base Bracket Assembly	2	2	
7.	3704-1	Bushing	2	2	
8.	3209-1	Left Hand Door Assembly	1		
	3596-1	Left Hand Door Assembly		1	
9.	9-3443-1	Actuator Rod, 1/8 x 18"	1	1	
10.	9-3444	Actuator Rod Guide	1	1	
11.	9-3445	Lock Collar	2	2	
12.	9-3446	Spring	1	1	
13.	3838-1	Micro Switch Bracket	1	1	
14.	4-M603-1	Micro Switch	1	1	
15.	9-3393	Decal	1		
	9-3394	Decal		1	
16.	4-PL04-2	Pilot Light, Ignition - Green, 28V	1	1	
17.	4753-1	Pilot Light, Temperature - Red, 28V	1	1	
18.	4-TB05	Bezel	1	1	
**	19.	4689-1	Dial (C)	1	1
		4352-1	Dial (F)	1	1
**	20.	4-PL06	Pilot Light, Motor - Amber, 125V	1	1

PARTS LIST, GAS TILTING SKILLET, MODELS ACGMTS-30, ACGMTS-40

<u>ITEM</u>	<u>PART NO.</u>	<u>DESCRIPTION</u>	<u>QUANTITY</u>		
			<u>ACGMTS-30</u>	<u>ACGMTS-40</u>	
	20.	4-PL06-1	Pilot Light, Motor - Amber, 250V	1	1
	21.	9110-1	Power Switch	1	1
	22.	9111-1	Up/Down Switch	1	1
**	23.	5555-1	Temperature Control c/w Potentiometer, 120V	1	1
		5555-2	Temperature Control c/w Potentiometer, 240V	1	1
*		9109-2	Rotary Shaft Seal	1	1
	24.	4-22TB	Terminal Block Section	2	2
	25.	4-22ES	End Section	1	1
	26.	4-35EU	Ground Lug	1	1
	27.	9123-1	Transformer, 125/230-24V, 50VA	1	1
	28.	9068-1	Fuse Holder	1	1
	29.	9092-1	Fuse, 1 Amp., 250V	1	1
	30.	3684-1	Box Cover	1	1
	31.	9-3381	Ignition Module	1	1
	32.	5-MC02	Magnetic Catch	1	1
	33.	3201-1	Side Panel	2	2
	34.	2573-1	Right Hand Door Assembly	1	
		2573-2	Right Hand Door Assembly		1
	35.	9010-300	Pipe, 3/4 x 30"	1	1
	36.	9014-1	Reducing Elbow, 3/4 x 1/2"	1	1
	37.	9009-030	Nipple, 1/2 x 3"	1	1
	38.	9-2007	Ball Valve, 1/2"	1	1
	39.	9009-000	Close Nipple, 1/2"	2	2
	40.	9015-3	Union, 1/2"	1	1

PARTS LIST, GAS TILTING SKILLET, MODELS ACGMTS-30, ACGMTS-40

<u>ITEM</u>	<u>PART NO.</u>	<u>DESCRIPTION</u>	<u>QUANTITY</u>	
			<u>ACGMTS-30</u>	<u>ACGMTS-40</u>
	41. 9012-3	Street Elbow, 1/2"	1	1
**	42. 5450-1	Combination Gas Control, Natural	1	1
	5450-2	Combination Gas Control, L.P.	1	1
	43. 9009-073	Nipple, 1/2 x 7-3/8"	1	
	9009-064	Nipple, 1/2 x 6-1/2"		1
	44. 9011-3	Elbow, 1/2"	1	1
	45. 9009-050	Nipple, 1/2 x 5"	1	1
	46. 9009-264	Pipe, 1/2 x 26-1/2"	1	1
	47. 2432-1	Manifold Assembly	1	
	1189-1	Manifold Assembly		1
	48. 3-122A	Orifice Nipple	4	6
	49. 9035-1	Pipe Plug, 1/8" NPT	1	1
**	50. 9-3351-44	Burner Orifice #44, Natural	4	
	9-3351-47	Burner Orifice #47, Natural		6
	9-3351-55	Burner Orifice #55, Liquid Propane	4	
	9-3351-56	Burner Orifice #56, Liquid Propane		6
	51. 7227-1	Burner	4	6
	52. M50S-1420-34	Screw, 1/4 - 20 x 3/4	8	8
	53. 8-2042	Lock Pin	2	2
	54. 8-2035L	End Lock Plate	2	2
	55. 5428-1	Stationary Disc	2	2
	56. 5430-1	Core	2	2
	57. 8-2026	Spring	2	2
	58. 5429-1	Rotary Disc	2	2

PARTS LIST, GAS TILTING SKILLET, MODELS ACGMTS-30, ACGMTS-40

<u>ITEM</u>	<u>PART NO.</u>	<u>DESCRIPTION</u>	<u>QUANTITY</u>	
			<u>ACGMTS-30</u>	<u>ACGMTS-40</u>
59.	8-2021	End Stop Plate	2	2
60.	7262-1	Burner Box Assembly, Right Hand		1
60.	7260-1	Burner Box Assembly, Right Hand	1	
61.	7261-1	Burner Box Assembly, Left Hand		1
	7259-1	Burner Box Assembly, Left Hand	1	
62.	6891-1	Flue Assembly	1	
	6888-1	Flue Assembly		1
63.	5169-2	Igniter Cable	1	1
**	64.	9-3380 Ignitor/Sensor Pilot, Natural	1	1
	9-3380-1	Ignitor/Sensor Pilot, L.P.	1	1
65.	M50C-1420-12	Screw, 1/4 - 20 x 1/2"	2	2
66.	3991-1	Lighter Orifice Bracket	1	1
67.	S01C-14	Lock Washer, 1/4"	2	2
68.	9029-1	Hex Nut, 1/4 - 20	2	2
69.	3-696A	Elbow, 3/8 C x 1/8 MPT	1	1
70.	3-129B	Bulk Head	1	1
**	71.	9-3335-56 Lighter Orifice, #56, Natural	1	1
	9-3335-65	Lighter Orifice, #65, L.P.	1	
	9-3335-72	Lighter Orifice, #72, L.P.		1
72.	6350-1	Lighter Tube Assembly	1	
	6351-1	Lighter Tube Assembly		1
73.	4127-3	Cord Set, 120V	1	1
74.	4139-1	Vent Cover	1	1
75.	4355-1	Swivel Spacer	1	1
76.	5817-1	Arm	1	1
77.	9248-1	Knob	1	1
78.	4354-1	Swivel Base	1	1
79.	F01S-14	Washer, 1/4 SS	1	1

PARTS LIST, GAS TILTING SKILLET, MODELS ACGMTS-30, ACGMTS-40

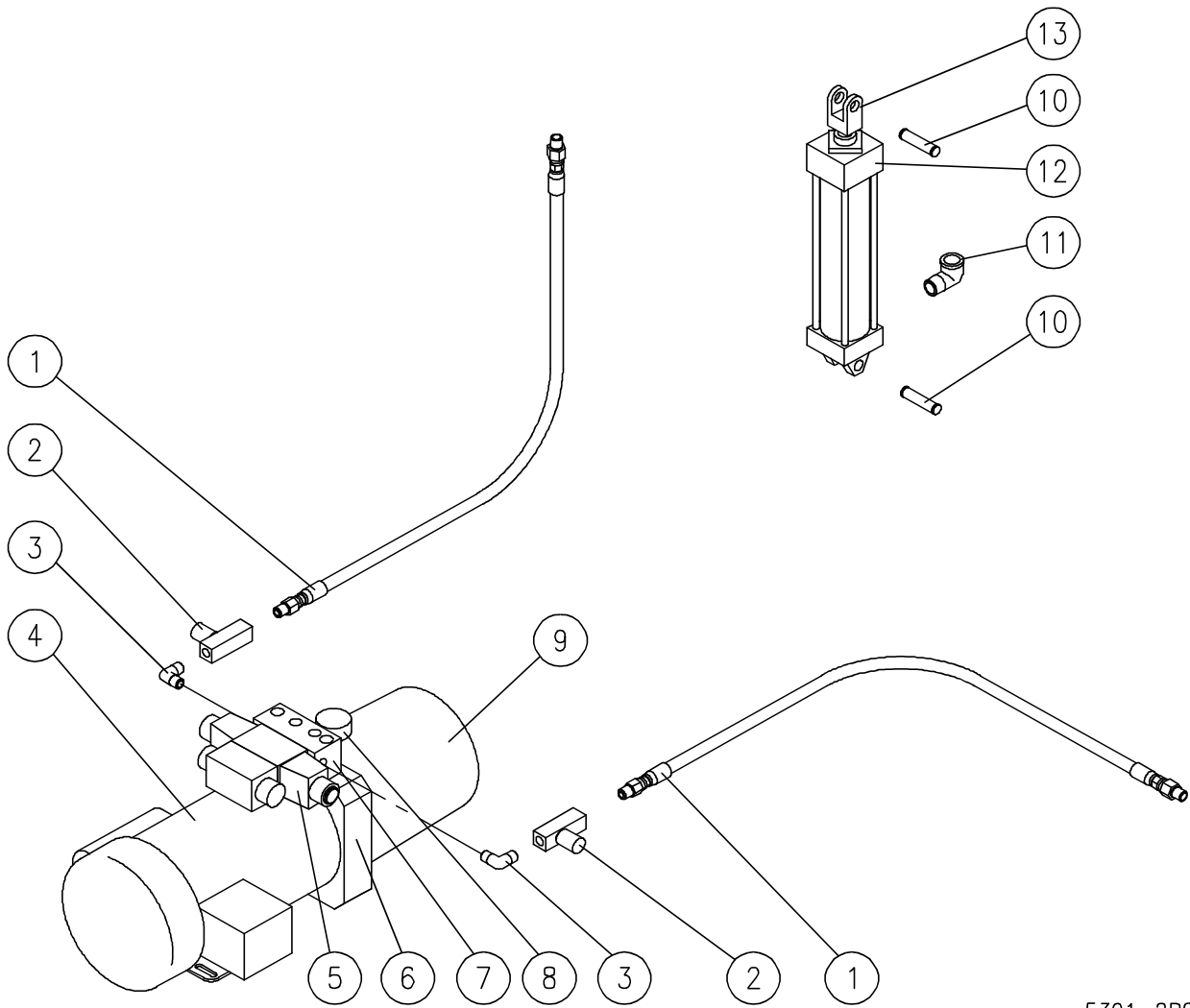
<u>ITEM</u>	<u>PART NO.</u>	<u>DESCRIPTION</u>	<u>QUANTITY</u>	
			<u>ACGMTS-30</u>	<u>ACGMTS-40</u>
	80. 1-55S3	Hex Bolt, 1/4 - 20 x 3/8 SS	1	1
*	81. 3682-1	Bushing - Tilt Bracket	2	2

* NOT SHOWN.

** SELECT AS REQUIRED.

PARTS LIST, GAS TILTING SKILLET, MODELS ACGMTS-30, ACGMTS-40

FIGURE 2



5391-2R0

PARTS LIST, GAS TILTING SKILLET, MODELS ACGMTS-30, ACGMTS-40

FIGURE 2

<u>ITEM</u>	<u>PART NO.</u>	<u>DESCRIPTION</u>	<u>QUANTITY</u>		
			<u>ACGMTS-30</u>	<u>ACGMTS-40</u>	
1.	4511-1	Hose Assembly	2	2	
2.	4512-1	Flow Valve	2	2	
3.	4513-1	Elbow	2	2	
**	4.	4101-1	Motor, 115/208/230/60	1	1
		4101-3	Motor, 380/50, 220/50	1	1
		4101-2	Motor, 380/480/60	1	1
**	5.	9119-1	Directional Valve, 110/120 VAC, 50/60 Hz	1	1
**		9119-2	Directional Valve, 220/240 VAC, 50/60 Hz	1	1
**		9118-1	Coil, 120V	2	2
**		9118-2	Coil, 220/240V	2	2
	6.	9-3032	Pump c/w Integral Relief Valve Manifold	1	1
	7.	4516-1	Breather	1	1
	8.	9-3034	Tank	1	1
	9.	9-3033	Pin c/w Clips	1	1
	10.	9-3036	Street Elbow	2	2
	11.	4109-1	Cylinder	1	1
	12.	4112-1	Cylinder Kit	1	1
*		9-3318	Yoke	1	1
	13.	9-3035	Flame Retardant, Hydraulic Oil, AWM 32 or Equivalent 4.54 L	1	1
*	14.				

* NOT SHOWN.

** SELECT AS REQUIRED.