



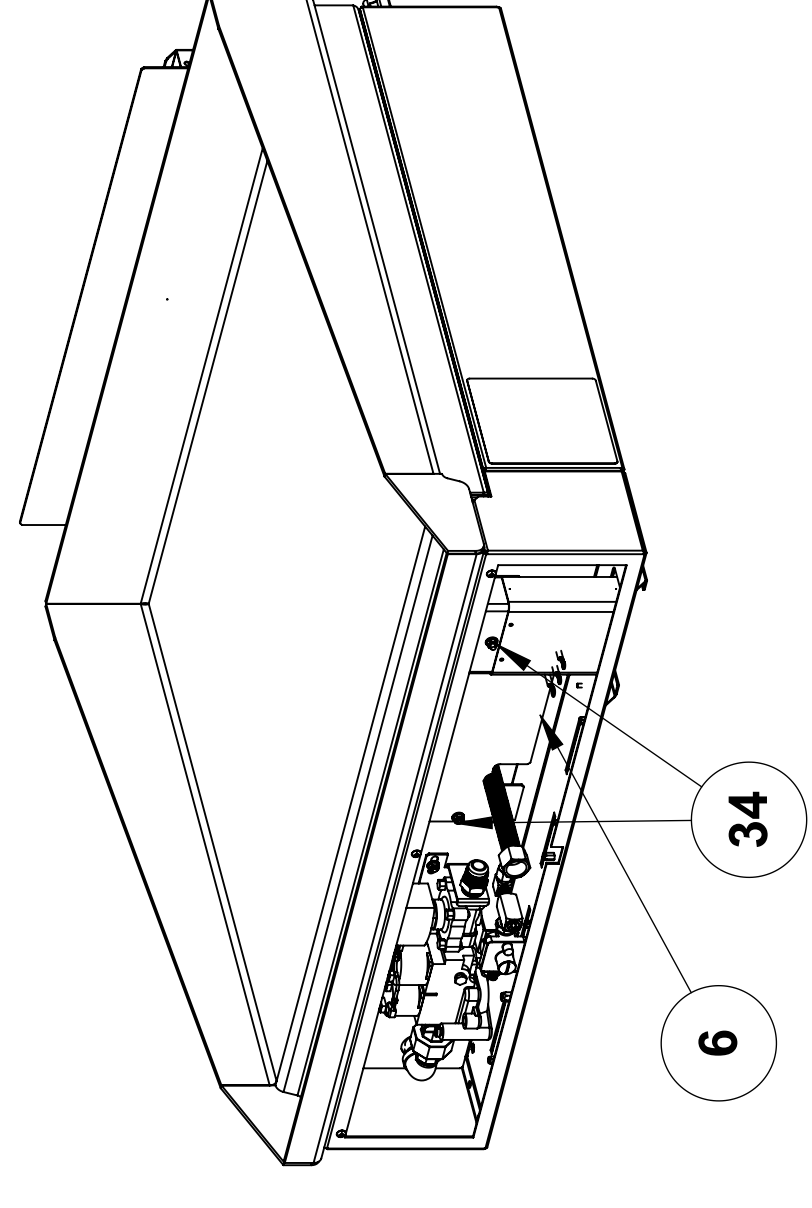
ACCU-STEAM™ GAS GRIDDLE PARTS MANUAL

DOCUMENT HISTORY

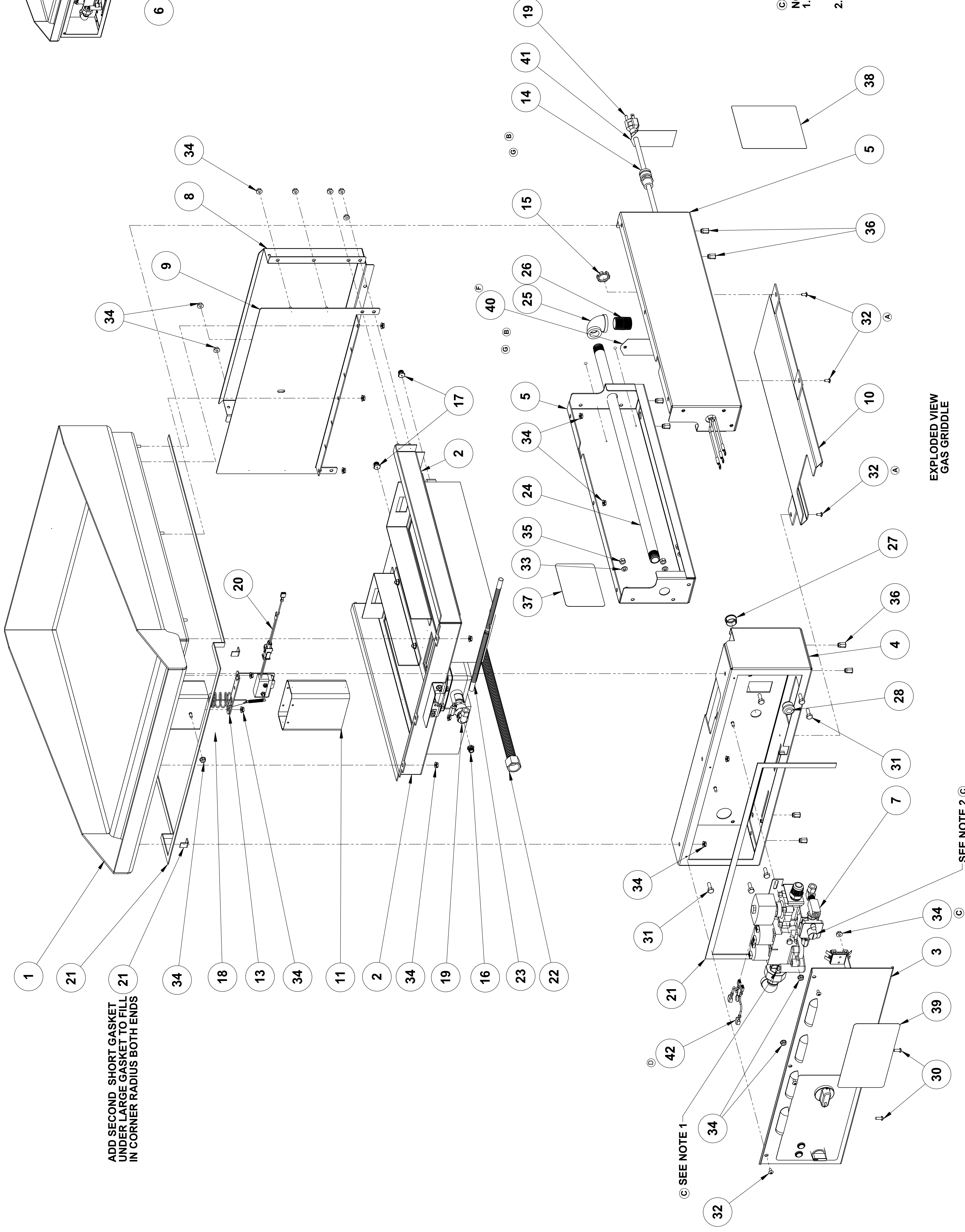
Current revision: –	Prior revision:	None
Date: 08/08/08	Date:	None
Change		
Initial release.		

TABLE OF CONTENTS

DOCUMENT HISTORY	i
TABLE OF CONTENTS	ii
GAS GRIDDLE ASSEMBLY - AT2A-2813	1 – 2
COMMBUSTION CHAMBER ASSEMBLY – AT2A-2818	3-5
PILOT BURNER ASSEMBLY – AT2A-2255	6
GAS CONTROL VALVE ASSEMBLY	7
CONTROL PANEL	8-10
HIGH LIMIT OVERTEMP ASSEMBLY	11
GAS APPLIANCE CONVERSION KIT	12
KIT CONTROL, KNOB GUARD	13
PARTS LIST – PAGE REFERENCE	14-15



CONTROL PANEL & GASKET
NOT SHOWN
©



ADD SECOND SHORT GASKET UNDER LARGE GASKET TO FILL IN CORNER RADIUS BOTH ENDS

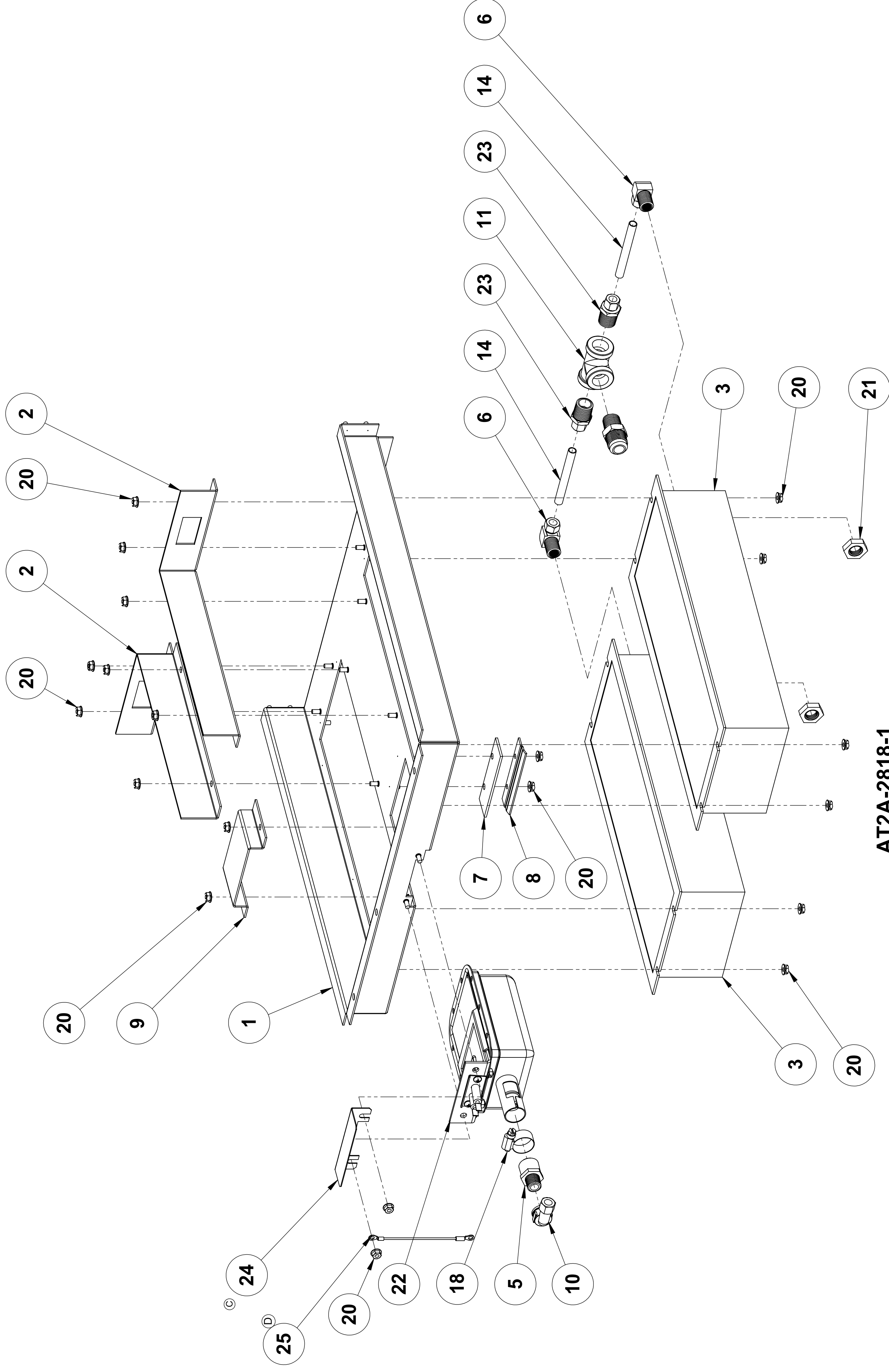
© NOTES
1. ADJUST MAIN GAS REGULATOR CONTROL VALVE TO 5" W.C. FOR NATURAL GAS, 10" W.C. FOR PROPANE LOCATED IN ITEM #7
2. ADJUST PILOT REGULATOR TO 3.5" W.C. FOR NATURAL GAS, 8" W.C. FOR PROPANE LOCATED IN ITEM #7

EXPLODED VIEW
GAS GRIDDLE

© SEE NOTE 1

© SEE NOTE 2

Accutemp Products, Inc. 8415 N. Clinton Park Fort Wayne, IN 46825		Name	Date
Drawn	ALB	05-05-04	
Checked	GLS	05-05-04	
Project Eng	GLS	05-05-04	
Material:	N/A		
Angular:	±1°		
2 Place Decimal:	±.02		
1 Place:	±.005		
Tolerance:	±.005		
GD&T Per ANSI Y14.5M	√125 Micro Inches		
Comments:	N/A		
Do Not Scale Drawing		Finish:	N/A
Scale: 1:4 EDR: 062		Size:	D AT2A-2813
		Rev:	G
		Sheet 2 of 2	



**AT2A-2818-1
COMBUSTION CHAMBER 24"**

QTY	PART NO.	ITEM	DESCRIPTION
1	1	AT0A-3506-1	25 GROUNDING HARNESS ASSEMBLY
1	1	AT2M-3299-1	24 SHIELD, WIRE HEAT
2	2	AT0P-2097-2	23 COMPRESSION FITTING
1	1	AT2A-2255-2	22 PILOT BURNER ASSY
3	2	AT0F-2909-1	21 NPT PIPE LOCKNUT
32	26	AT0F-1017-41002	20 NUT, #10-24UNC HEX SERRATED
			19
1	1	AT0F-2908-1	18 HOSE CLAMP
1	-	AT2P-2105	17 18.5" LONG 3/8 FLEXTUBE COMP ENDS
1	-	AT0P-2096-1	16 ELBOW 90° COMPRESSION
2	2	AT2M-2824-1	15 BARRIER, FLU GAS - SHORT
-	2	AT0P-2276-1	14 SEAMLESS TUBING
2	2	AT0P-2276-2	14 SEAMLESS TUBING
1	1	AT0P-2845-1	13 MALE ADAPTER, 5/8" OD FLARE X 1/2 NPT X 3/8 NPT
1	-	AT0P-2844-1	12 CROSS, 1/2 NPT SCH 40
-	1	AT0P-2090-1	11 TEE 1/2 NPT SCH 40
1	1	AT0P-2094-1	10 ELBOW 90° COMPRESSION
1	1	AT2M-2881-1	9 DEFLECTOR, GAS GRIDDLE
1	1	AT2M-2792-1	8 BRKT, STEP
1	1	AT2M-2791-1	7 SPACER, BURNER
3	2	AT0B-2891-1	6 ELBOW 90° COMPRESSION
1	1	AT0B-2890-1	5 ORIFICE, ADAPTER
3	2	AT2B-2099-1	4 30,000 BTU IR MAIN BURNER
-	2	AT2B-2131-1	3 20,000 BTU IR MAIN BURNER
-	1	AT2M-2795-4	2 BARRIER, FLUE GAS
1	-	AT2M-2795-3	2 BARRIER, FLUE GAS
1	2	AT2M-2795-2	2 BARRIER, FLUE GAS
-	1	AT2M-2795-1	2 BARRIER, FLUE GAS
1	-	AT2A-2790-3	1 COMBUSTION BOX ASSEMBLY
-	1	AT2A-2790-1	1 COMBUSTION BOX ASSEMBLY
-	1	AT2A-2790-2	1 COMBUSTION BOX ASSEMBLY

QTY	PART NO.	ITEM	DESCRIPTION
AT2A-2818-1			
AT2A-2818-2			
AT2A-2818-3			

QTY	PART NO.	ITEM	DESCRIPTION
AT2A-2818-1			
AT2A-2818-2			
AT2A-2818-3			

QTY	PART NO.	ITEM	DESCRIPTION
AT2A-2818-1			
AT2A-2818-2			
AT2A-2818-3			

QTY	PART NO.	ITEM	DESCRIPTION
AT2A-2818-1			
AT2A-2818-2			
AT2A-2818-3			

QTY	PART NO.	ITEM	DESCRIPTION
AT2A-2818-1			
AT2A-2818-2			
AT2A-2818-3			

QTY	PART NO.	ITEM	DESCRIPTION
AT2A-2818-1			
AT2A-2818-2			
AT2A-2818-3			

QTY	PART NO.	ITEM	DESCRIPTION
AT2A-2818-1			
AT2A-2818-2			
AT2A-2818-3			

QTY	PART NO.	ITEM	DESCRIPTION
AT2A-2818-1			
AT2A-2818-2			
AT2A-2818-3			

ECN	REV	DESCRIPTION	DATE	APPR
164	A	CHG'D: AT0F-1017-41002 WAS CHG'D TO AT0F-1017-41001	06-11-04	ALB/IGLS
151	B	CHG'D: ITEM 26 AT0F-2908-1 WAS AT2M-2908-1	11-29-04	AP/CLS
283	C	ADDED: ITEM #24 (AT2M-3299-1) TO GROUPS -1	06-23-06	ALB/LEC
373	D	REMOVED: (FROM ITEM #19) WAS AT0F-1017-41002 WAS CHG'D TO AT0F-1017-41001 26 WAS 18, 32 WAS 20, ADDED: ITEM #25 (AT0A-3506-1)	12-14-07	LEC/ALB

Rev	Size	Drawing No.	Rev
D	D	AT2A-2818	D

Name	Date
ALB	06-14-04
CLS	06-14-04
Project Eng	06-14-04

Material	Material
Angular: ±1°	Material:
2 Place Decimal	Tolerance: ±.005
2 Place Decimal	Tolerance: ±.005
1/125 Micro Inches	GD&T Per ANSI Y14.5M

Finish	Finish
N/A	N/A

Scale	Scale
1:3	EDR: 045F

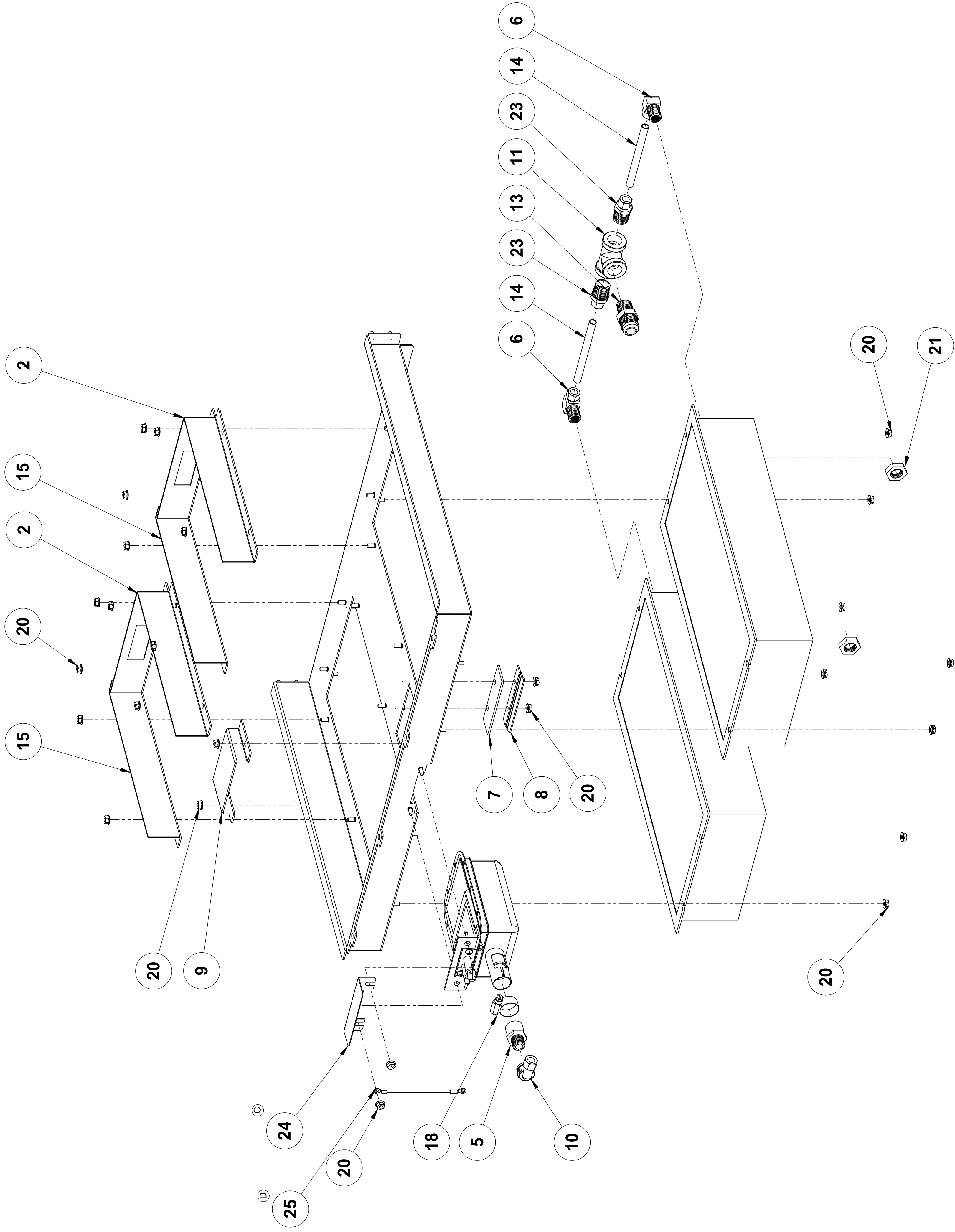
Sheet	Sheet
1 of 3	1 of 3

Company	Company
AccuTemp Products, Inc	AccuTemp
8415 N. Clinton Park	8415 N. Clinton Park
Fort Wayne, IN 46825	Fort Wayne, IN 46825

Assembly	Assembly
COMBUSTION CHAMBER ASSEMBLY	COMBUSTION CHAMBER ASSEMBLY

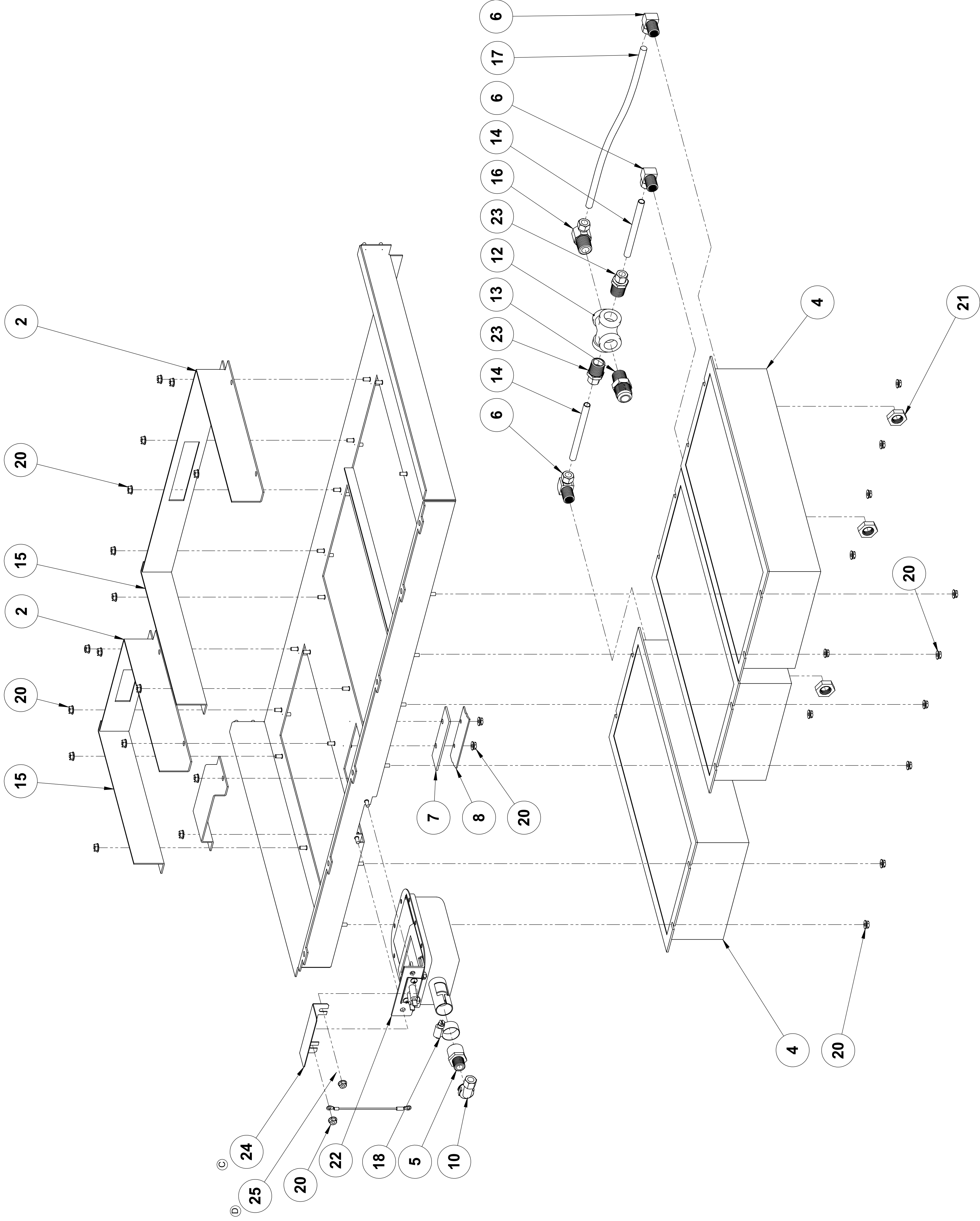
Item	Item
COMBUSTION CHAMBER ASSEMBLY	COMBUSTION CHAMBER ASSEMBLY

Item	Item
COMBUSTION CHAMBER ASSEMBLY	COMBUSTION CHAMBER ASSEMBLY



AT2A-2818-2
COMBUSTION CHAMBER 36"

Unless otherwise specified, Dimensions in Inches		Name	Date	AccuTemp Products, Inc 8415 N. Clinton Park Fort Wayne, IN 46825
Drawn	ALB	ALB	05-14-04	
Checked	GLS	GLS	05-14-04	
Project Eng.	GLS	GLS	05-14-04	
Material:		Title: COMBUSTION CHAMBER ASSEMBLY		
Place Decimal	:.02	Size	D	Rev. D
Place Decimal	:.005	Drawing No.:	AT2A-2818	
Tolerance	±.005	Finish:	N/A	
GD&T Per ANSI Y14.5M		Do Not Scale Drawing	Scale: 1:1 EDR: 045F	
Comments:			Sheet 2 of 3	



AT2A-2818-3
COMBUSTION CHAMBER 48"

Unless otherwise specified,
 Dimensions: Inches
 Tolerances:
 Angular: ±1°
 2 Place Decimal: ±.02
 3 Place Decimal: ±.005
 GD&T Per ANSI Y14.5M
 Comments:
 Do Not Scale Drawing

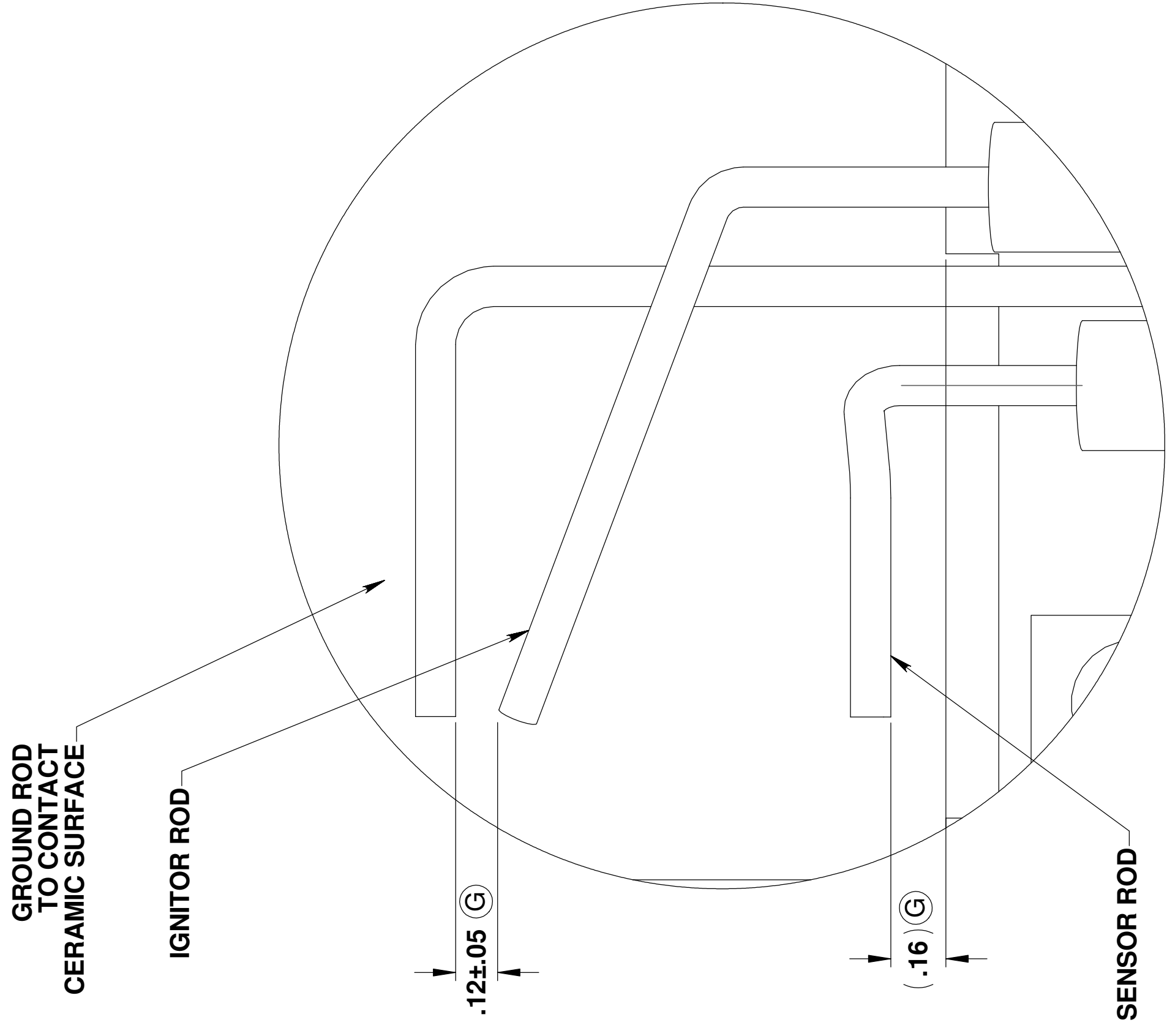
Name	Date
ALB	05-14-04
GLS	05-14-04
GLS	05-14-04

AccuTemp Products, Inc 8415 N. Clinton Park Fort Wayne, IN 46825	
COMBUSTION CHAMBER ASSEMBLY	
Size	Rev.
N/A	D
Drawing No.:	AT2A-2818
N/A	N/A
Scale: 1:3 EDR: 045F	
Sheet 3 of 3	

NOTES:

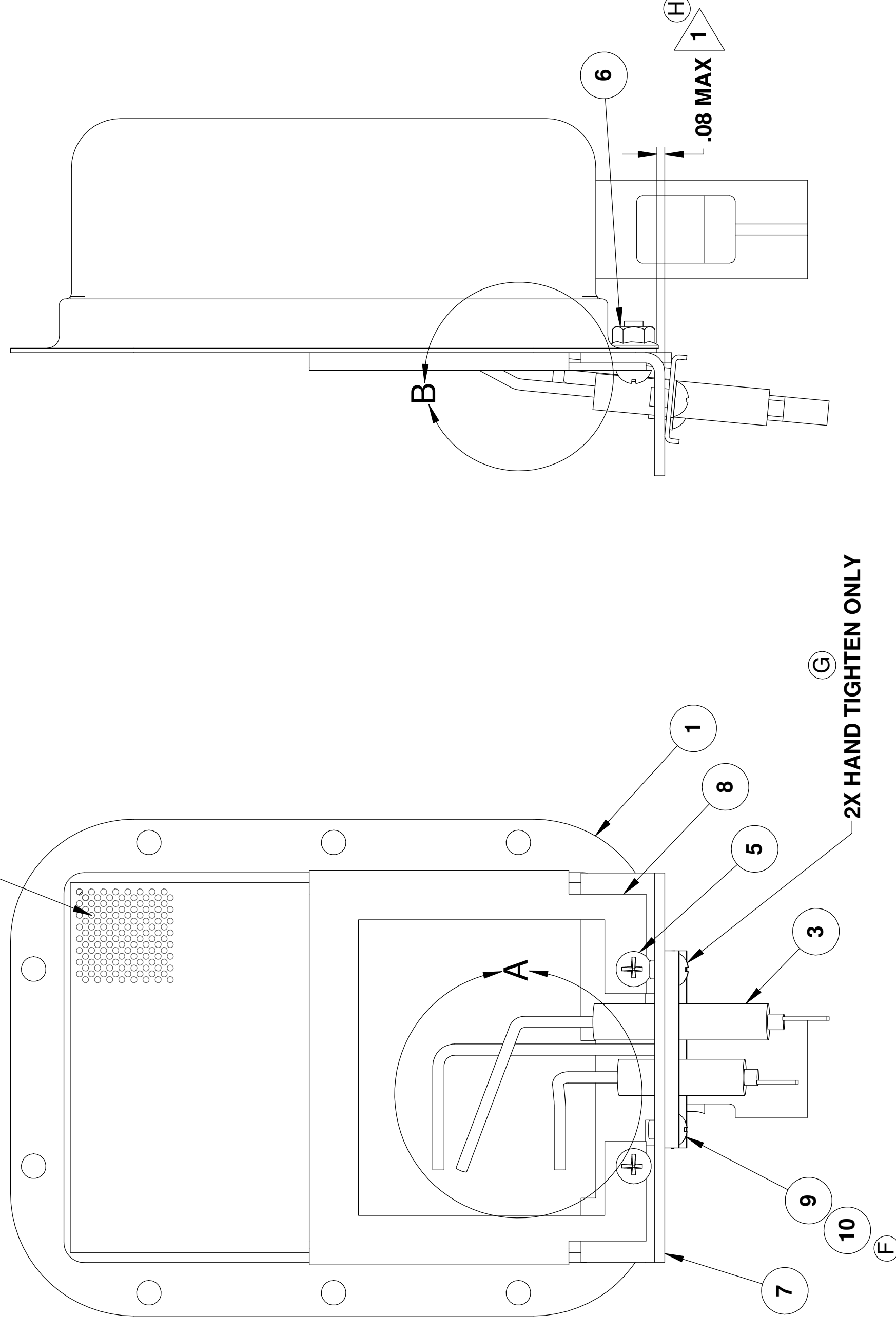
- ① DIMENSION IS TAKEN FROM OUTSIDE FLANGE OF AT2A-2785-1 TO OUTSIDE FLANGE OF AT2M-2793-1

NOTE: GROUND ROD TO BE POSITIONED ONTO LOWEST POINTS OF CERAMIC SURFACE ⑥



DETAIL A ⑥
SCALE 3 : 1

HOLE PATTERN CONSISTENT ACROSS ENTIRE CERAMIC TILE SURFACE ③



DETAIL B ③
SCALE 3 : 1

AT2A-2255-2 ③

SETUP AND CALIBRATION: ③

- ASSEMBLE AND POSITION RODS AS SHOWN IN DETAIL "A".
- ALLOW UNIT TO WARM UP APPROXIMATELY 20 SECONDS UNTIL THE IGNITOR STOPS SPARKING. IF THE UNIT WILL NOT STOP SPARKING OR INTERMITTANTLY SPARKS, ADJUST THE PROBES AND REPEAT THIS STEP.
- THE mV READING MUST BE A MINIMUM OF 40mV.
- IF THE READING IS LESS THAN 40mV, REPOSITION THE SENSOR ROD OVER THE CERAMIC SURFACE AND REPEAT STEP 4.
- IF UNABLE TO ACHIEVE THE MINIMUM mV AFTER SEVERAL TRIES, REPLACE THE SENSOR/IGNITOR PROBE ASSY (ITEM 3) AND REPEAT THE SETUP AND CALIBRATION PROCEDURE.

QTY	PART NO.	ITEM NO.	DESCRIPTION
2	AT0F-2666-40000	10	WASHER, #10 INTERNAL TOOTH LOCK
2	AT0F-2755-41022	9	SCREW, #10-24UNC X 1/4 PHILIPS ROUND HEAD MACHINE
1	AT2M-2871-1	8	BRKT, GROUND PLANE
1	AT2M-2793-1	7	BRKT, BURNER & IGNTR/SNSR
2	AT0F-1017-41001	6	#10-24UNC HEX SERRATED NUT
2	AT0F-2755-41040	5	SCREW, #10-24UNC X 1/2 PHILIPS ROUND HEAD MACHINE
		4	
1	AT2E-2083-1	3	IGNITOR / SENSOR PROBE
		2	
1	AT2A-2785-1	1	PILOT BURNER/TUBE ASSY

ECN	REV	CHG'D	DESCRIPTION	DATE	APPR
299	H		CHG'D: (RH VIEW) .08 MAX WAS .06 MAX; ADDED: (DETAIL B) .07-.10	09/21/06	LEC/ATP

REVISIONS	DESCRIPTION	DATE	APPR

UNLESS OTHERWISE SPECIFIED, DIMENSIONS ARE IN INCHES	NAME	DATE
TOLERANCES:	ALB	11/11/2003
2 PLACE DECIMAL: ±.02	GLS	2/17/2004
3 PLACE DECIMAL: ±.005	GLS	2/17/2004
1/16" PER ANS I Y14.5M		
DO NOT SCALE DRAWING		

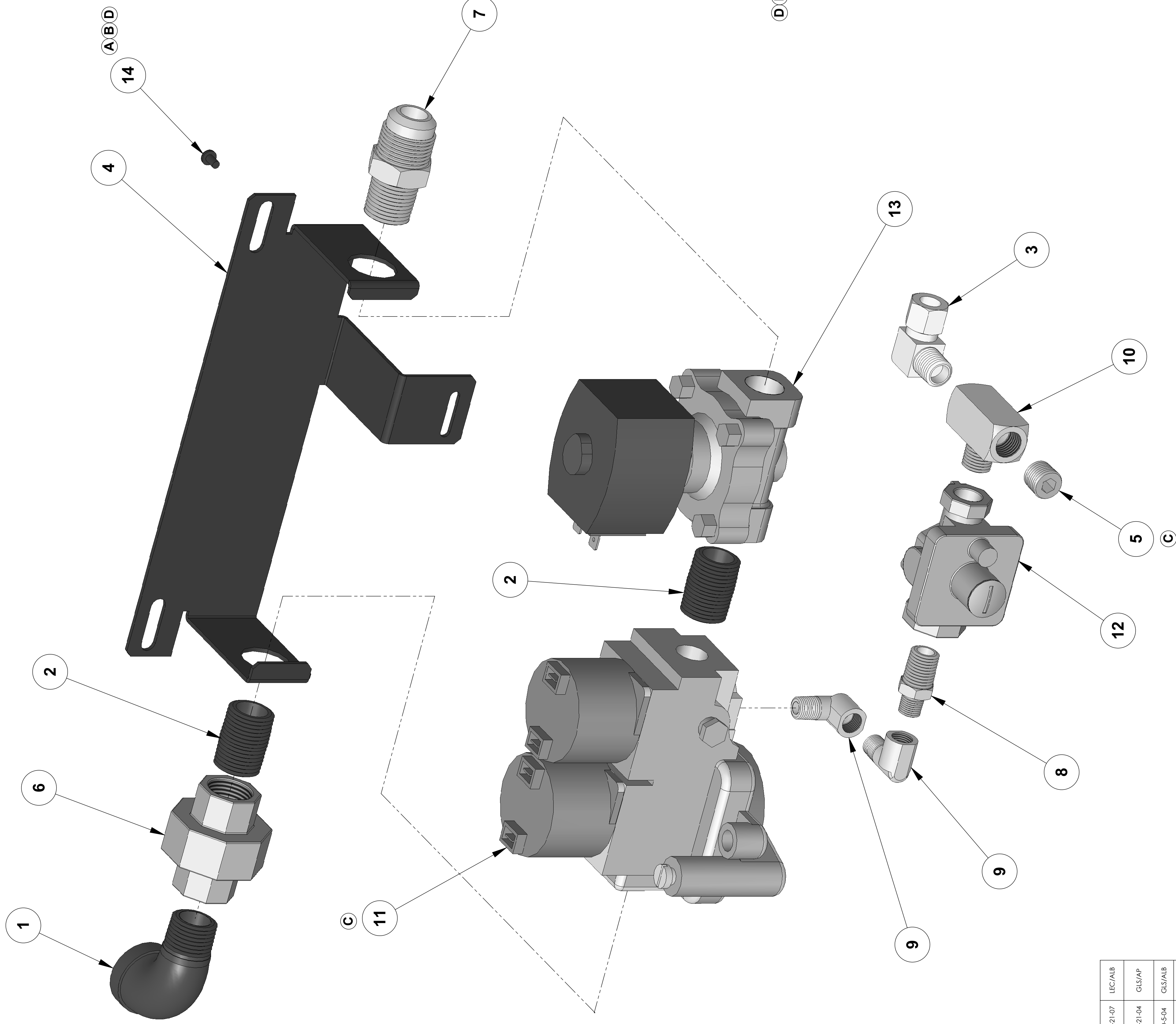
REV.	DATE	DESCRIPTION
D		PILOT BURNER ASSY
H		GAS GRIDDLE

SIZE	DRAWING NO.	REV.
D	AT2A-2255	H

Scale	Scale	EDR
1:1	EDR: 43	

NOTES: UNLESS OTHERWISE SPECIFIED

1. ALL PIPE THREADS TO BE SEALED WITH THREAD SEALANT OR THREAD TAPE APPROVED FOR GAS.



AT2A-2850-2
GAS CONTROL VALVE ASSEMBLY PROPANE

AT2A-2850-2
GAS CONTROL VALVE ASSEMBLY PROPANE
OTHERWISE SAME AS AT2A-2850-1

QTY	AT2A-2850-2	QTY	AT2A-2850-1	PART NO.	DESCRIPTION
1	1	1	1	AT0F-3222-21025	14 SCREW, PHILLIPS PAN HEAD #6-32 TYPE F 1/4"
1	1	1	1	AT2E-2087-1	13 MAIN BURNER VALVE
1	-	-	-	AT0P-2847-2	12 PRESSURE REGULATOR, PROPANE GAS
-	1	1	1	AT0P-2847-1	12 PRESSURE REGULATOR, NATURAL GAS
1	-	-	-	AT2E-1806-3	11 CONTROL VALVE, GAS 10" W.C. PROPANE GAS
-	1	1	1	AT2E-1806-2	11 CONTROL VALVE, GAS 5" W.C. NATURAL GAS
1	1	1	1	AT0P-2858-1	10 TEE MALE BRANCH
2	2	2	2	AT0P-2849-3	9 STREET ELBOW 90°
1	1	1	1	AT0P-2848-1	8 REDUCING HEX NIPPLE
1	1	1	1	AT0P-2845-1	7 MALE CONNECTOR
1	1	1	1	AT0P-2843-1	6 UNION BLACK IRON PIPE
1	1	1	1	AT0P-3024-2	5 PLUG COUNTERSUNK HEX HEAD
1	1	1	1	AT2M-2838-1	4 BRKT GAS REGULATOR
1	1	1	1	AT0P-2096-2	3 ELBOW 90° COMPRESSION
2	2	2	2	AT0P-2091-4	2 CLOSE NIPPLE PIPE
1	1	1	1	AT0P-2089-4	1 ELBOW, STREET 90°

ECN	REV.	DESCRIPTION	DATE	APPROVED
344	D	CHGD: ITEM #14 AT0F-3222-21025 WAS AT0F-2773-21022	05-21-07	LEC/ALB
186	C	RMAVD: ITEM NO 6 AT0P-2841-1, CHGD: BOMBALLOON ERROR: ITEM NO 11 W/ CHGD: ITEM NO 5 AT0P-3024-2	12-21-04	GLS/AP
152	B	CHGD AT0F-2773-21022 WAS AT0F-31030	10-5-04	GLS/ALB
101	A	ADDED: ITEM 14	05-07-04	GLS

QTY	AT2A-2850-2	QTY	AT2A-2850-1	PART NO.	DESCRIPTION
1	1	1	1	AT0P-2089-4	1 ELBOW, STREET 90°

QTY	AT2A-2850-2	QTY	AT2A-2850-1	PART NO.	DESCRIPTION
1	1	1	1	AT0P-2089-4	1 ELBOW, STREET 90°

QTY	AT2A-2850-2	QTY	AT2A-2850-1	PART NO.	DESCRIPTION
1	1	1	1	AT0P-2089-4	1 ELBOW, STREET 90°

QTY	AT2A-2850-2	QTY	AT2A-2850-1	PART NO.	DESCRIPTION
1	1	1	1	AT0P-2089-4	1 ELBOW, STREET 90°

QTY	AT2A-2850-2	QTY	AT2A-2850-1	PART NO.	DESCRIPTION
1	1	1	1	AT0P-2089-4	1 ELBOW, STREET 90°

QTY	AT2A-2850-2	QTY	AT2A-2850-1	PART NO.	DESCRIPTION
1	1	1	1	AT0P-2089-4	1 ELBOW, STREET 90°

QTY	AT2A-2850-2	QTY	AT2A-2850-1	PART NO.	DESCRIPTION
1	1	1	1	AT0P-2089-4	1 ELBOW, STREET 90°

AccuTemp Products, Inc
8415 N. Clinton Park
Fort Wayne, IN 46825

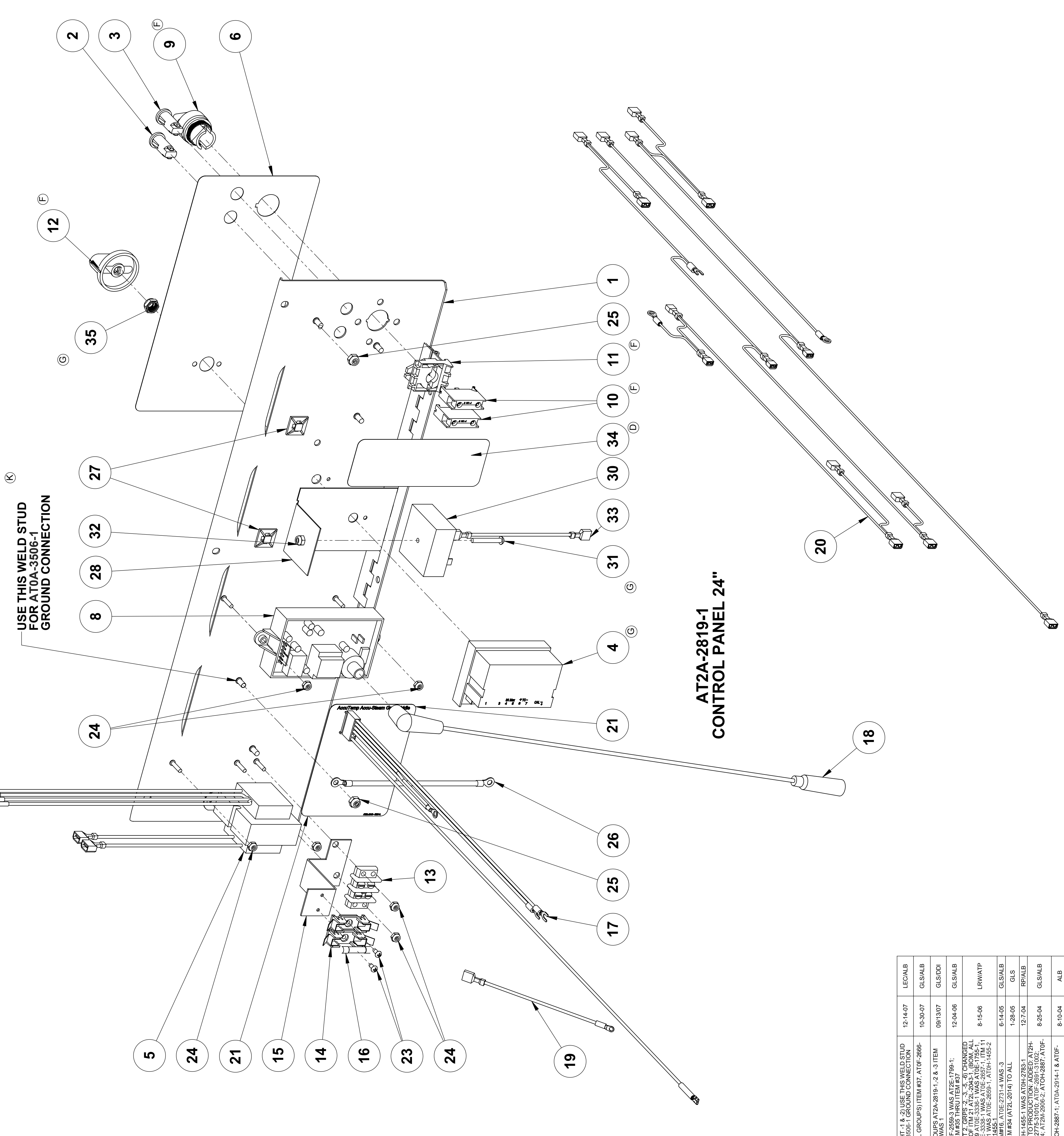
AccuTemp

Drawn: ALB 03-25-04
Checked: GLS 05-07-04
Project Eng: GLS 05-07-04
Title: GAS CONTROL VALVE ASSEMBLY

Material: N/A
Finish: N/A

Size: D AT2A-2850
Drawing No.: AT2A-2850

Rev: D
Scale: 1:1 EDR: 045E
Sheet 1 of 1



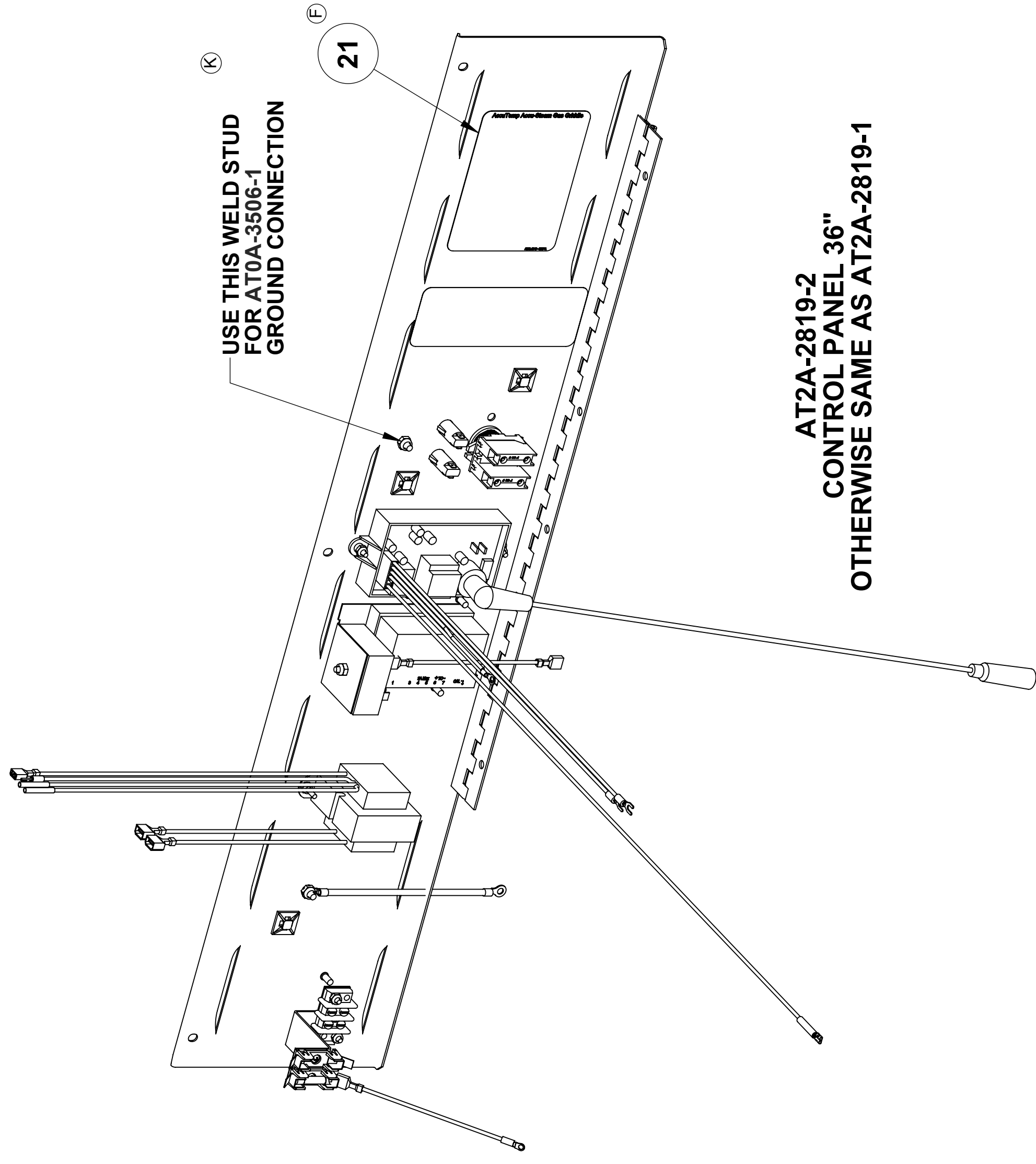
	QTY	AT2A-2819-6	AT2A-2819-5	AT2A-2819-4	AT2A-2819-3	AT2A-2819-2	AT2A-2819-1	PART NO.	ITEM	DESCRIPTION
J H G	1	1	-	-	-	-	-	AT0F-3390-1	37	NUT, HEX THIN 3/8-32UNEF-2B
G	-	-	1	1	1	1	-	AT0F-3371-1	36	NUT, ROTARY SHAFT SEAL
G	1	1	1	1	1	1	1	AT2L-2014-1	35	SUPPLEMENTAL DATA TAG
D	1	1	1	1	1	1	1	AT0A-2615-4	34	WIRE HARNESS
B	1	1	1	1	1	1	1	AT0F-2691-31002	33	NUT, #6-32 NYLOC
B	1	1	1	1	1	1	1	AT0F-2755-31102	32	SCREW, #6-32UNC X 1/4 PHILIPS ROUND HEAD MACHINE
B	1	1	1	1	1	1	1	AT2H-2500	31	TIMER RELAY
A	1	1	1	1	1	1	1	AT2L-2715-5	30	OVERLAY, CONTROL PANEL
A	1	1	1	1	1	1	1	AT2M-2478	29	TIMER RELAY BRKT
A	4	3	2	4	3	2	-	AT0H-2887-1	28	CABLE TIE MOUNT
A	1	1	1	1	1	1	1	AT0A-2914-1	27	LANYARD
A	4	4	4	2	2	2	2	AT0F-2691-41002	26	NUT, #10-24 NYLOC
A	6	6	6	6	6	6	6	AT0F-2691-21002	25	NUT, #6-32 NYLOC
A	2	2	2	2	2	2	2	AT0F-2755-21020	24	SCREW, #6-32UNC X 1/4 PHILIPS ROUND HEAD MACHINE
A	-	-	-	-	-	-	-	AT2M-2906-2	23	BRACKET TEMP CONTROLLER
E	1	1	-	-	-	-	-	AT2M-2906-1	22	BRACKET TEMP CONTROLLER
E	1	1	1	1	1	1	1	AT2L-2043-1	21	WIRING DIAGRAM
E	1	1	1	1	1	1	1	AT2A-2898-1	20	HARNESS ASSEMBLY
E	1	1	1	1	1	1	1	AT2A-2822-1	19	HARNESS ASSEMBLY
E	1	1	1	1	1	1	1	AT2E-1804-2	18	IGNITION CABLE
E	1	1	1	1	1	1	1	AT0A-2719-2	17	MODULE HARNESS ASSEMBLY
E	1	1	1	1	1	1	1	AT0E-2731-4	16	FUSE 3/4 AMP 250V
E	1	1	1	1	1	1	1	AT2M-2820-1	15	BRACKET FUSE HOLDER
E	1	1	1	1	1	1	1	AT0E-2708-1	14	3AG OMNI-BLOCK FUSE BLOCK 2 POS
E	1	1	1	1	1	1	1	AT0E-1134-2	13	2 POSITION TERMINAL BLOCK
F G C	1	1	1	1	1	1	1	AT0H-1455-2	12	KNOB FOR D SHAFT
F	1	1	1	1	1	1	1	AT0E-3339-1	11	MOUNTING LATCH
F	2	2	2	2	2	2	2	AT0E-3338-1	10	CONTACT BLOCK
F	1	1	1	1	1	1	1	AT0E-3336-1	9	OPERATOR, AB ROTARY SWITCH
F	1	1	1	1	1	1	1	AT2E-1807-1	8	IGNITION CONTROLLER
G	1	1	1	1	1	1	1	AT2L-2715-2	7	OVERLAY, CONTROL PANEL
G	-	-	-	-	-	-	-	AT2L-2715-1	6	OVERLAY, CONTROL PANEL
G	1	1	1	1	1	1	1	AT0A-2779-2	5	TRANSFORMER ASSEMBLY
G	1	1	1	1	1	1	1	AT0E-2559-3	4	TEMPERATURE CONTROLLER
G	1	1	1	1	1	1	1	AT0E-1800-2	3	INDICATOR LAMP RED INCANDESCENT 28V
G	1	1	1	1	1	1	1	AT0E-1800-1	2	INDICATOR LAMP GRN INCANDESCENT 28V
G	1	-	-	-	-	-	-	AT2A-2208-3	1	CONTROL PANEL WELD ASSY
G	-	-	-	-	-	-	-	AT2A-2208-2	1	CONTROL PANEL WELD ASSY
G	-	-	-	-	-	-	-	AT2A-2208-1	1	CONTROL PANEL WELD ASSY

Name		Date
Drawn	ALB	06-19-04
Checked	GLS	07-19-04
Project Eng.	GLS	07-19-04
Material:	N/A	
Finish:	N/A	

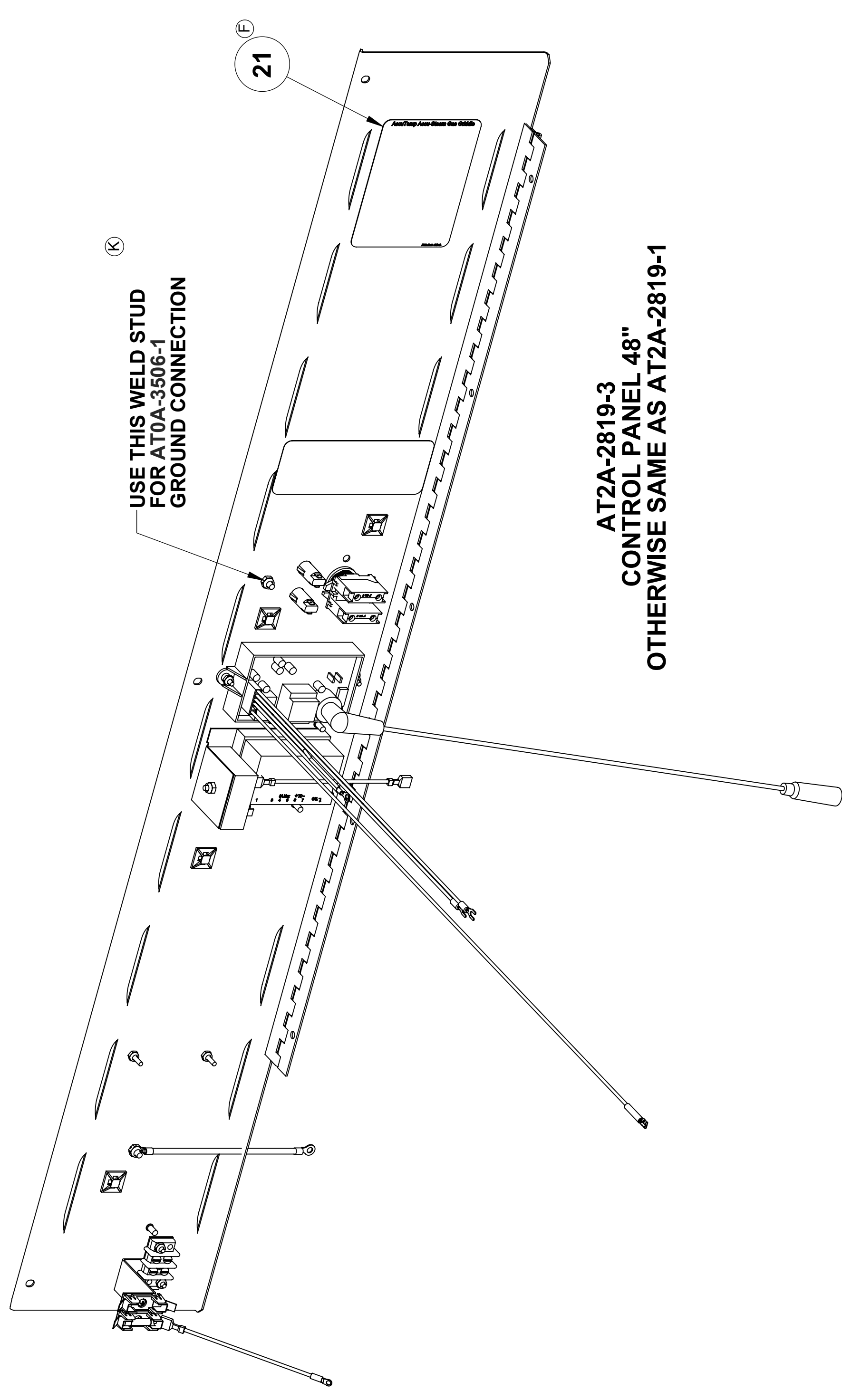
Unless otherwise specified, Dimensions in Inches
 Bore .0015"
 Tolerances:
 Angular .±1°
 2 Place Decimal = .02"
 3 Place Decimal = .005"
 Tolerance = .005"
 Y125 Micro Inches
 GD&T Per ANSI Y14.5M
 Comments:
 Do Not Scale Drawing

ECN	REV	DESCRIPTION	DATE	APPR
182A	C	CHGD: AT0H-1455-1 WAS AT0H-2783-1	12-7-04	RP/PALB
288	F	RELEASED TO PRODUCTION. ADDED: AT2H-2887-1	8-25-04	GLS/ALB
313	G	CHGD: AT0F-2559-3 WAS AT0E-1799-1	8-10-04	ALB

AccuTemp Products, Inc
 8415 N. Clinton Park
 Fort Wayne, IN 46825
 CONTROL PANEL
 Drawing No.: **AT2A-2819**
 Rev: **K**
 Scale: 1:1 EDR: 062
 Sheet 1 of 3



AT2A-2819-2
CONTROL PANEL 36"
OTHERWISE SAME AS AT2A-2819-1



AT2A-2819-3
CONTROL PANEL 48"
OTHERWISE SAME AS AT2A-2819-1

Unless otherwise specified,
Dimensions in Inches
Bends 90°
Tolerances:
Angular ±1°
2 Place Decimal ±.02
3 Place Decimal ±.005
1 LR ±.005
1/125 Micro Inches
GD&T Per ANSI Y14.5M
Comments:
Do Not Scale Drawing

Name	Date
Drawn ALB	06-19-04
Checked GJS	07-19-04
Project Eng GJS	07-19-04
Material:	N/A
Finish:	N/A

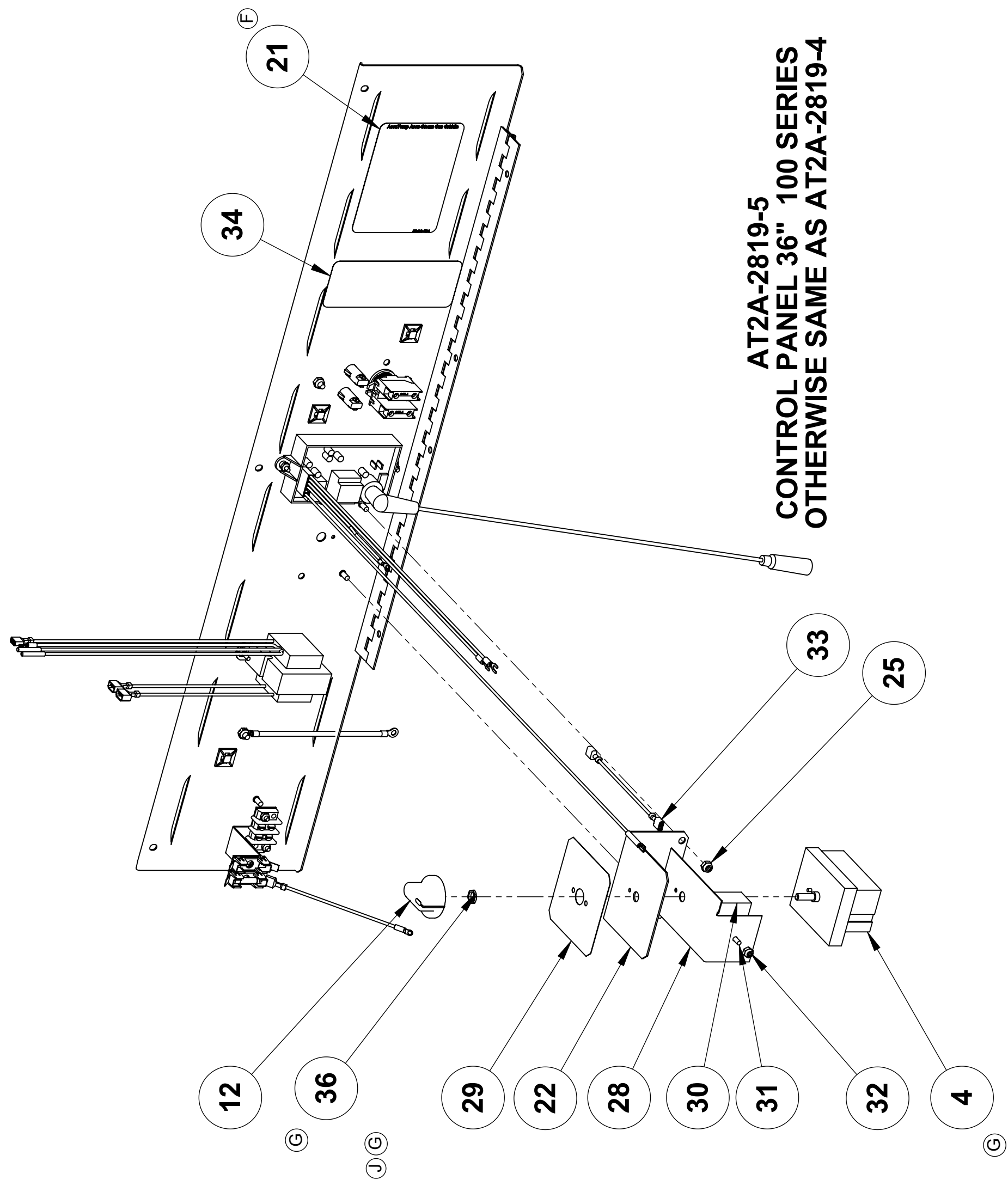
AccuTemp Products, Inc
8415 N. Clinton Park
Fort Wayne, IN 46825

AccuTemp

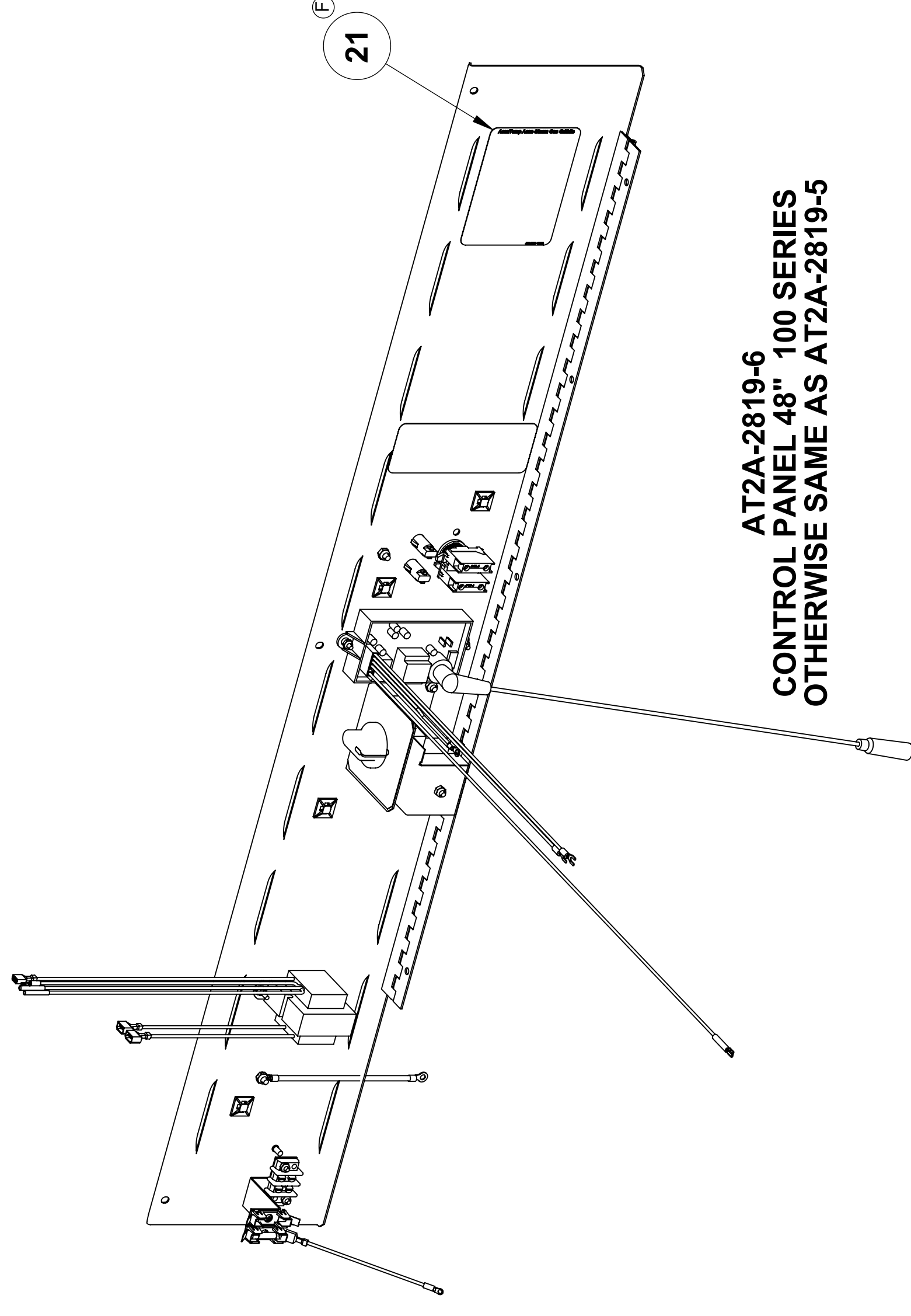
CONTROL PANEL

Rev.	Drawing No.:
K	AT2A-2819

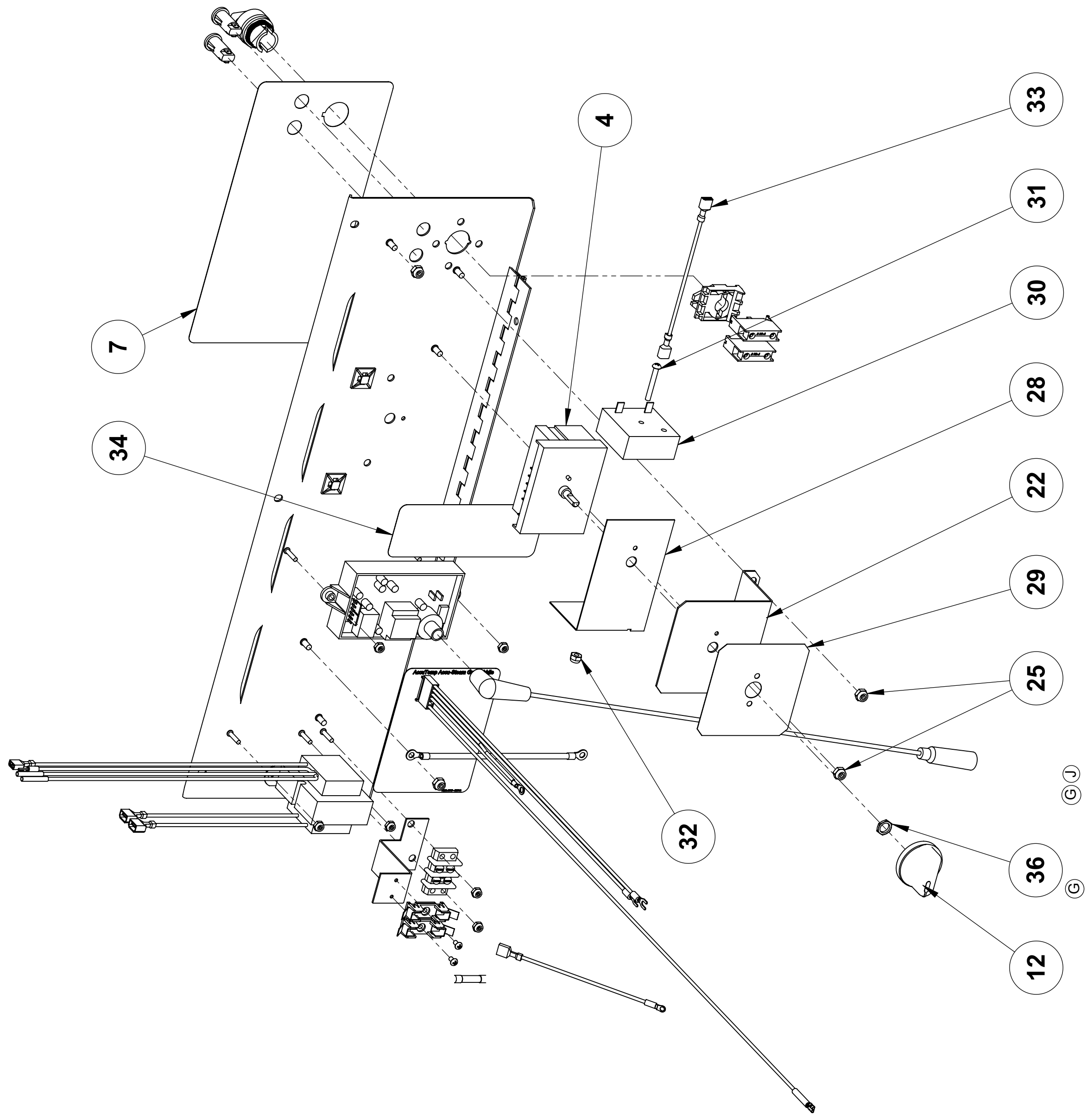
Scale: 1:2 ECN: Sheet 2 of 3



AT2A-2819-5
CONTROL PANEL 36" 100 SERIES
OTHERWISE SAME AS AT2A-2819-4

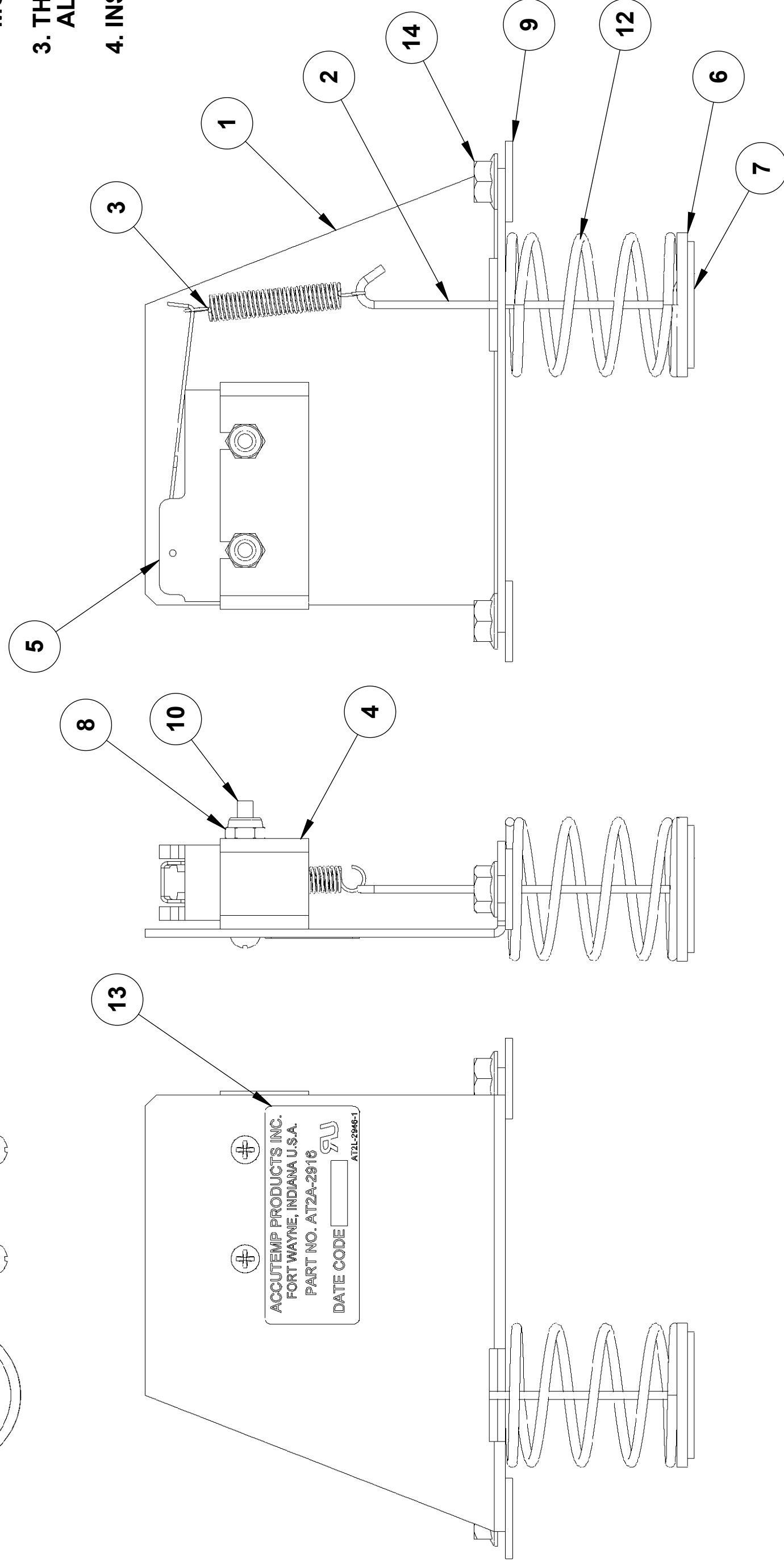
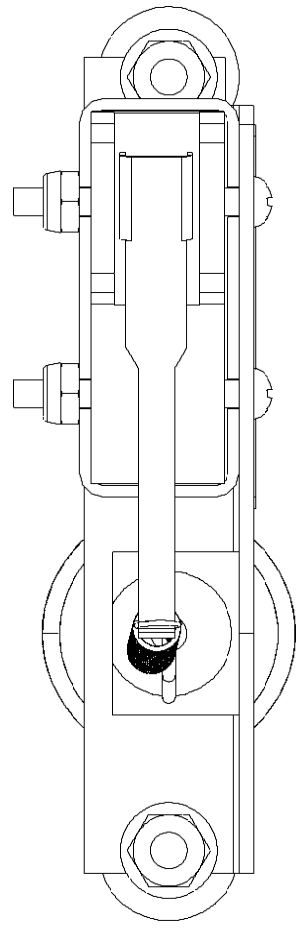


AT2A-2819-6
CONTROL PANEL 48" 100 SERIES
OTHERWISE SAME AS AT2A-2819-5



AT2A-2819-4
CONTROL PANEL 24" 100 SERIES
OTHERWISE SAME AS AT2A-2819-1

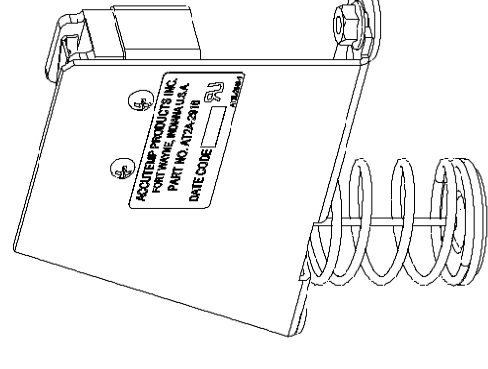
Unless otherwise specified, Dimensions in Inches		Name	Date	AccuTemp Products, Inc 8445 N. Clinton Park Fort Wayne, IN 46825	
Tolerances:	Form: .015	Drawn	06-19-04		
Angular: ±1°	Fit: H7/g6	Checked	07-19-04		
2 Place Decimal: .02	Surface: .015	Project Eng	07-19-04		
1/16" = .0625	Thread: .005	Material:	N/A		
GD&T Per ANSI Y14.5M	1/25 Micro Inches	Finish:	N/A	CONTROL PANEL Drawing No.: AT2A-2819 Rev: K Scale: 1:2 EDR: 062 Sheet 3 of 3	



NOTE:

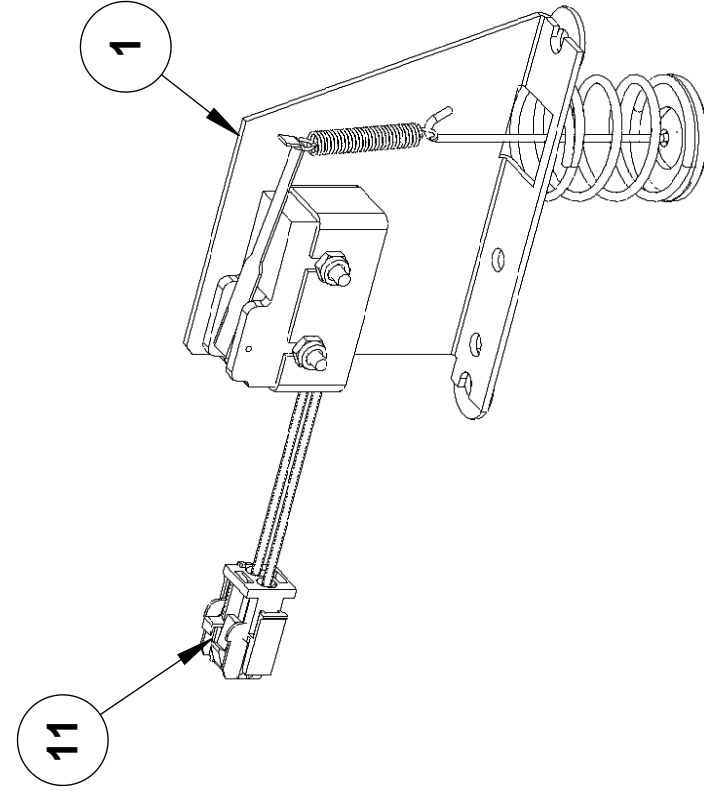
1. MANUFACTURING DATE CODE REFLECTS THE DATE OF MANUFACTURE OF THE ROD ASSEMBLY.
2. DATE CODE TO BE PERMANENTLY MARKED WITH YEAR, MONTH, DAY (YYMMDD) AND BATCH LETTER (A) - [YYMMDDA].
3. THE BATCH LETTER IS IDENTIFIED AS A SINGLE ALPHANUMERIC CHARACTER IE. A,B,C ETC.
4. INSTALL DATE CODE LABEL TO BRACKET AS SHOWN.

ACCUTEMP PRODUCTS INC.
FORT WAYNE, INDIANA U.S.A.
PART NO. AT2A-2916
DATE CODE [] [] [] [] [] [] [] []
AT2L-2946-1



AT2A-2916-1

QTY	QTY	PART NUMBER	ITEM	DESCRIPTION
-	2	AT0F-1017-41002	14	NUT, #10-24UNC HEX SERRATED
1	1	AT2L-2946-1	13	DATE CODE LABEL
1	1	AT2H-1365-1	12	COMPRESSION SPRING
1	-	AT2A-2759-1	11	CABLE ASSEMBLY
2	2	AT0F-2755-21102	10	SCREW, #6-32UNC X 1 1/4 PHILIPS ROUND HEAD MACHINE
2	2	AT0F-1052-51002	9	WASHER 1/4 TYPE B PLAIN
2	2	AT0F-2691-21002	8	NUT, #6-32 NYLOC
1	1	AT2M-2860-1	7	SOLDER WASHER
1	1	AT2F-1367-1	6	WASHER, TYPE A
1	1	AT2E-1639-1	5	MICROSWITCH
1	1	AT0E-1759-1	4	MICROSWITCH COVER
1	1	AT2H-1640-1	3	EXTENSION SPRING
1	1	AT2M-2861-1	2	WIRE ROD OVERTEMP
1	1	AT2M-1558-2	1	BRACKET SWITCH RIGHT HAND
AT2A-2916-2	AT2A-2916-1			



**AT2A-2916-2
OTHERWISE SAME AS AT2A-2916-1**



Unless otherwise specified:
Dimensions: Inches
Bends: 90°
Tolerances:
Angular: +1°
2 Place Decimal: ±.02
3 Place Decimal: ±.005
T.I.R.: ±.005
±.125 Micro inches
GD&T Per ANSI Y14.5M
Comments:
Do Not Scale Drawing

Name	Date
Drawn: ALB	07-22-04
Checked: DPS	07-22-04
Project Eng: DPS	07-22-04
Material: N/A	
Finish: N/A	

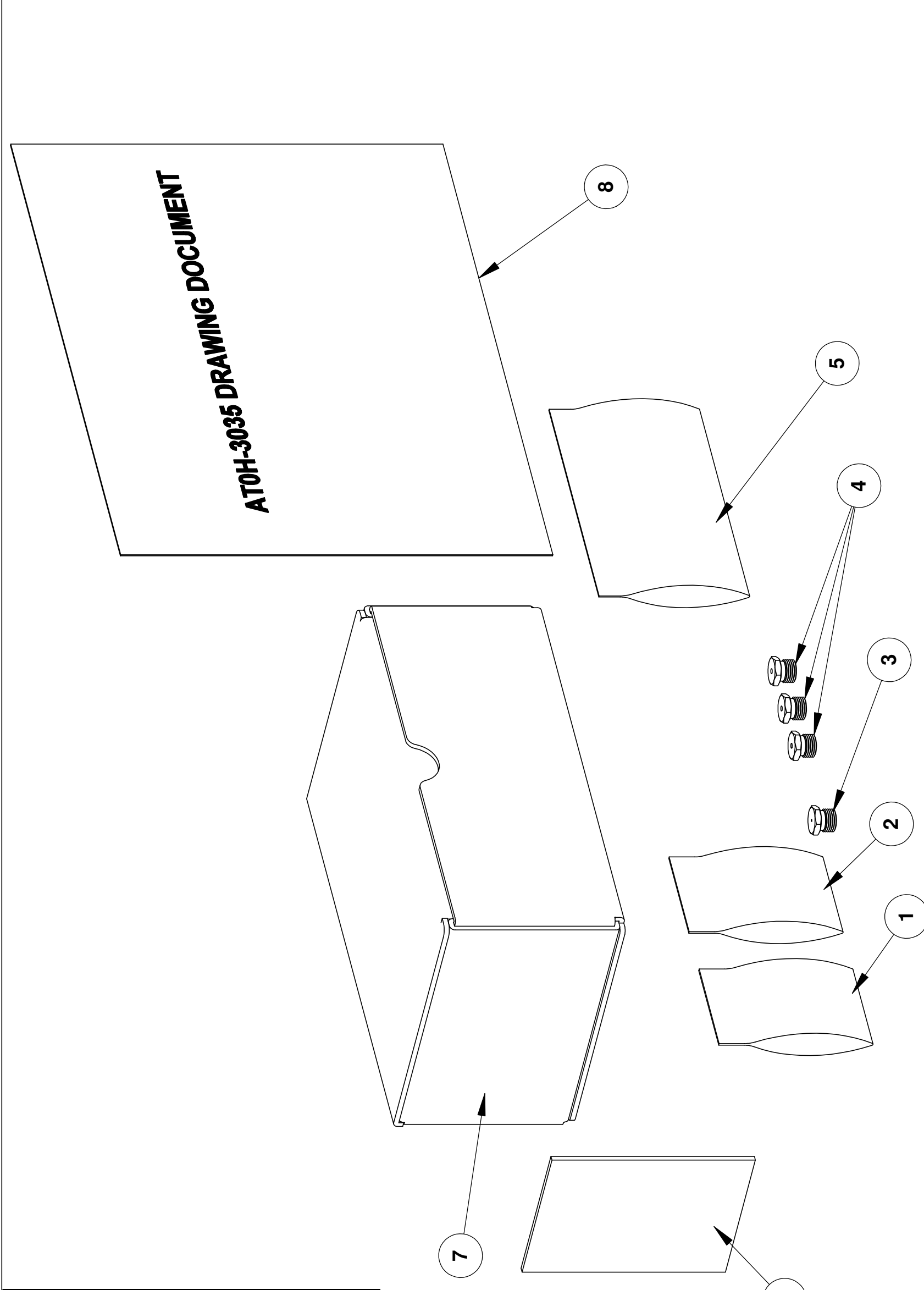
**HIGH LIMIT
OVERTEMP ASSEMBLY**

Size: C	Drawing No.: AT2A-2916	Rev: B
Scale: 1:1		EDR: 057

ECN	REV	DATE	REVISIONS
380	B	11-30-07	CHG'D: (AT2A-2916-1) AT2M-1558-2 WAS AT2M-1558-1
135	A	08-16-04	REMOVED: AT2A-2916-3 & -4; CHG'D: AT2L-2946-1 WAS AT2L-1851; AT0F-1052-51002 WAS AT2F-1643

REGULATOR SET PRESSURES

PART No	MAIN GAS REGULATOR	PILOT GAS REGULATOR	GRIDDLE SIZE / CONVERSION TO GAS TYPE
AT0H-3035-1	11 In H2O	8 In H2O	24" PROPANE GAS KIT
AT0H-3035-2	11 In H2O	8 In H2O	36" PROPANE GAS KIT
AT0H-3035-3	11 In H2O	8 In H2O	48" PROPANE GAS KIT
AT0H-3035-4	5 In H2O	3.5 In H2O	24" NATURAL GAS KIT
AT0H-3035-5	5 In H2O	3.5 In H2O	36" NATURAL GAS KIT
AT0H-3035-6	5 In H2O	3.5 In H2O	48" NATURAL GAS KIT



QTY	AT0H-3035-1	QTY	AT0H-3035-2	QTY	AT0H-3035-3	QTY	AT0H-3035-4	QTY	AT0H-3035-5	QTY	AT0H-3035-6	PART NO.	ITEM NO.	DESCRIPTION
1	1	1	1	1	1	1	1	1	1	1	1	AT0H-3035	8	GAS APPLIANCE STD CONVERSION KIT DWG
1	1	1	1	1	1	1	1	1	1	1	1	AT0S-2780-1	7	CARDBOARD BOX
1	1	1	1	1	1	1	1	1	1	1	1	AT0S-2770-1	6	FOAM OR BUBBLE WRAP
1	1	1	1	1	1	1	1	1	1	1	1	AT0H-2782-1	5	ZIPLOC BAG
2	-	-	-	-	-	-	-	-	-	-	-	AT0B-2888-54	4	ORIFICE
-	-	-	3	-	-	-	-	-	-	-	-	AT0B-2888-52	4	ORIFICE
-	-	2	-	-	-	-	-	-	-	-	-	AT0B-2888-51	4	ORIFICE
-	-	-	-	2	-	-	-	-	-	-	-	AT0B-2888-46	4	ORIFICE
-	-	-	-	-	-	-	-	-	-	3	-	AT0B-2888-40	4	ORIFICE
-	-	-	-	-	-	-	-	2	-	-	-	AT0B-2888-38	4	ORIFICE
-	-	-	-	1	-	-	-	1	-	-	-	AT0B-2888-59	3	ORIFICE
1	1	1	1	-	-	-	-	-	-	-	-	AT0B-2888-71	3	ORIFICE
-	-	-	-	-	-	-	1	1	-	-	-	AT0H-3034-4	2	(PILOT) REGULATOR SPRING KIT
1	1	1	1	-	-	-	-	-	-	-	-	AT0H-3034-2	2	(PILOT) REGULATOR SPRING KIT
-	-	-	-	1	-	-	1	1	-	-	-	AT0H-3034-3	1	(MAIN) REGULATOR SPRING KIT
1	1	1	1	-	-	-	-	-	-	-	-	AT0H-3034-1	1	(MAIN) REGULATOR SPRING KIT
QTY	AT0H-3035-1	QTY	AT0H-3035-2	QTY	AT0H-3035-3	QTY	AT0H-3035-4	QTY	AT0H-3035-5	QTY	AT0H-3035-6			

REVISIONS				REVISIONS			
ECN/REV	DESCRIPTION	DATE	APPR	ECN/REV	DESCRIPTION	DATE	APPR

Unless otherwise specified,
 Dimensions: Inches
 Bends: 90°
 Tolerances:
 Angular: ±1°
 2 Place Decimal ±.02
 3 Place Decimal ±.005
 1, I.F. ±.005
 1/125 Micro Inches
 GD&T Per ANSI Y14.5M
 Comments:
 Do Not Scale Drawing

Drawn	G. SEITZ	Date	1/03/04
Checked	D. STANLEY	Project Eng	G. SEITZ
Title:		1/13/05	

AccuTemp Products, Inc.
 8415 N. Clinton Park
 Fort Wayne, IN 46825

AccuTemp

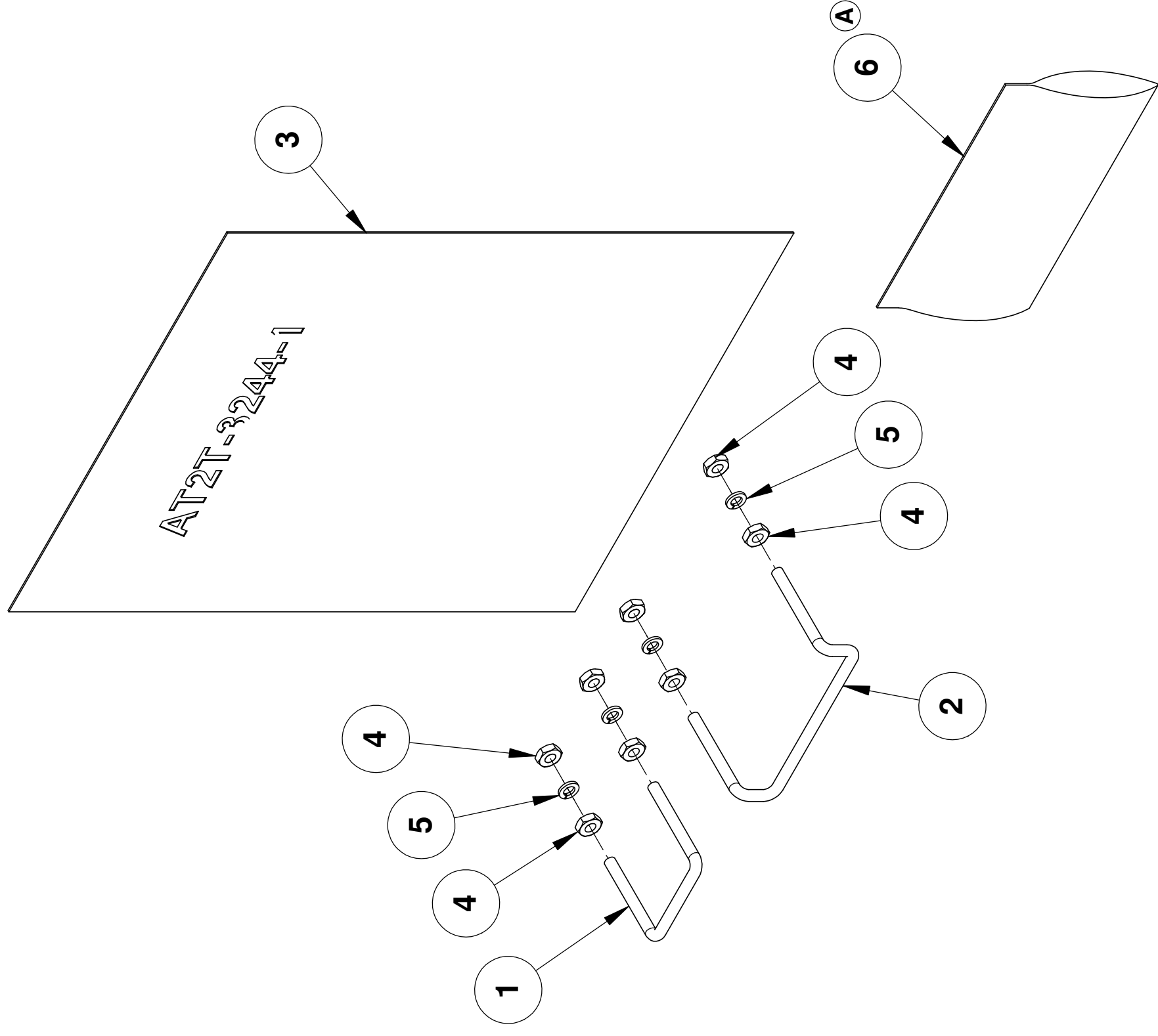
GAS APPLIANCE STD CONVERSION KIT

Size: Drawing No.:
C **AT0H-3035**

Rev: -

Scale: 1:2 EDR: 080

Sheet 1 of 1



(A)

QTY	AT2A-3263-3	QTY	AT2A-3263-2	QTY	AT2A-3263-1	PART NUMBER	ITEM	DESCRIPTION
1		1		1		AT0H-2782-1	6	BAG, 3 X 5 RECLOSABLE
2		2		4		AT0F-1922-40000	5	WASHER, #10 SS HELICAL SPRING LOCK
4		4		8		AT0F-2778-40001	4	NUT, #10-32 UNC-2B HEX MACHINE SCREW
1		1		1		AT2T-3244-1	3	INSTRUCTIONS, CONTROL GUARD INSTALL
1		-		1		AT0M-3239-2	2	GUARD, CONTROL KNOB
-		1		1		AT0M-3239-1	1	GUARD, CONTROL KNOB

Unless otherwise specified, Dimensions: Inches Bends: 90° Tolerances: Angular ±1° 2 Place Decimal ±.02 3 Place Decimal ±.005 T.I.R. ±.005 √125 Micro Inches GD&T Per ANSI Y14.5M Comments: Do Not Scale Drawing		Drawn Checked Project Engr Material:	Name ATP LEC LEC N/A N/A	Date 4/25/2006 4/25/2006 4/25/2006	AccuTemp AccuTemp Products, Inc. 8415 N. Clinton Park Fort Wayne, IN 46825
Title: KIT, CONTROL KNOB GUARD		Size: C	Drawing No.: AT2A-3263	Rev. B	Scale: 1:2 EDR: 127 Sheet 1 of 1

ECN	REV	DESCRIPTION	DATE	APPR
307	B	ADDED: GRPS -2 & -3	10-27-06	DPS/ATP
278	A	ADDED: ITM 6 AT0H-2782-1	5-10-06	LEC/ATP

REVISIONS

AccuSteam™ Gas Griddle

Part #	Description	Page Reference
Burners		
AT2B-2131-1	IR Main Burner - 20,000 BTU - 24" Only	3
AT2B-2099-1	IR Main Burner 30,000 BTU - 36" & 48"	4 & 5
AT2A-2255-2	Stand By Burner Assembly. (Pilot) Includes Ignition Sensor Probe Assembly AT2E-2083-1	3,4&5
Conversion Kits		
AT0H-3035-1	24" Propane Gas Kit	12
AT0H-3035-2	36" Propane Gas Kit	12
AT0H-3035-3	48" Propane Gas Kit	12
AT0H-3035-4	24" Natural Gas Kit	12
AT0H-3035-5	36" Natural Gas Kit	12
AT0H-3035-6	48" Natural Gas Kit	12
Fuses		
AT0E-2731-4	Fuse, .75 (3/4) amp,	8
AT0E-2708-1	3/4 amp Fuse Holder	8
Flex Piping		
AT0P-2846-1	5/8 X 31" Griddle Flex Tube	1&2
AT0P-2846-2	5/8 X 26" Griddle Flex Tube	1&2
Gaskets		
AT2G-1702	Gasket Seal, Skirt Chamber and Control Panel	2
Ignition Control		
AT2E-1807-1	Ignition Control Module	8
AT2E-1804-2	Ignition Cable 20" - Gas	8
AT0A-2719-2	Module Harness Assembly, Gas	8
AT2E-2083-1	Ignition Sensor Probe Assembly	6
AT0A-3506-1	Grounding Harness Assembly	3,4&5
AT2M-3299-1	Shield, Wire Heat	3,4&5
Lamps		
AT0E-1800-1	Pilot Lamp, Green - 24V - Power	8
AT0E-1800-2	Pilot Lamp, Red - 24V - Heat	8
Legs		
AT2A-3032-1	Leg Assembly, 4" legs	Not Shown
AT2A-3032-2	Leg Assembly, 8" legs	Not Shown
AT0F-1922-50002	Washer, 1/4" Helical Spring - used to attach legs to griddle 2 required per leg	Not Shown
AT0F-2875-51062	Screw, 1/4"-20 UNC Hex Head Machine - - used to attach legs to griddle 2 required per leg	Not Shown
MOV		
AT0A-2736-9	MOV Assembly- Control Valve	1&2
Overtemp		
AT2M-1558	Bracket, Overtemp Switch	11
AT2M-2478	Bracket, Timer Relay	11
AT2E-1639-1	Overtemp Micro Switch	11
AT2E-1759	Overtemp Switch, Cover	11
AT2H-1640-1	Spring Extention, Overtemp	11
AT2H-1365-1	Spring, Compression	11
AT2L-1851	Warning Label, Overtemp Brkt	11
AT2F-1367-1	Washer, Type A, Bi-metal	11
AT2M-2860-1	Washer Pressed, Solder Overtemp	11
AT0F-1052-51002	Washer 1/4" USS Flat, type B plain	11

AccuSteam™ Gas Griddle

AT2M-2861-1	Wire Rod, Shaped Overtemp	11
Power Cord		
AT0A-2911-1	Power Cord Assembly, 120v	1&2
Relay		
AT2M-2478	Bracket, Timer Relay	8&10
AT2H-2500	Time, Delay Relay	8&10
Screws/Fittings		
AT0F-1017-41002	Nut# 10x24 UNC Hex Serrated	3&4&5
AT0F-1046-31010	Screw - #8x32 Phillips Truss Head Screw - Used to secure Control Compartment	1&2
Stand Hardware		
AT0H-2479-3	Caster, 5"	Not Shown
AT0H-2479-4	Caster, 5" w/Brake	Not Shown
Switch		
AT0E-3336-1	Rotary Switch	8&10
AT0E-3338-1	On Contact Block (requires 2)	8&10
AT0E-3339-1	Mounting Latch Locking Ring	8&10
AT2A-3263-2	Control Knob Guard Kit (for switch only) - Optional Accessory	13
Test Equipment		
ATR-FT003	Flame Tester Probe - Used to Check Flame Sense Voltage to the Ignition Control Module - AT2E-1807-1	Not Shown
Transformer		
AT0E-1809-1	Transformer - 24v Secondary	8&10
Thermocouple		
AT0E-2885-2	Temperature sensor - K Type	1&2
Thermostat		
AT0E-2559-3	Thermostat - Gas - 24v	8&10
AT0H-1455-2	Thermostat Knob	8&10
AT2A-3263-3	Control Knob Guard Kit (Thermostat Only) Optional Accessory	13
Valves		
AT2E-1806-2	Gas Control Valve, 5 h20 set	7
AT2E-2087-1	Main Burner Valve	7
AT0P-2847-1	Pressure Regulator Valve, Natural Gas	7
AT0P-2847-2	Pressure Regulator Valve, Propane	7
AT2E-1806-3	Propane Control Valve, 10h20set	7