

Parts Information

Commercial Microwave Oven

Important notes:

This is an uncontrolled document.

There is no record of its distribution and no corrections will be provided.



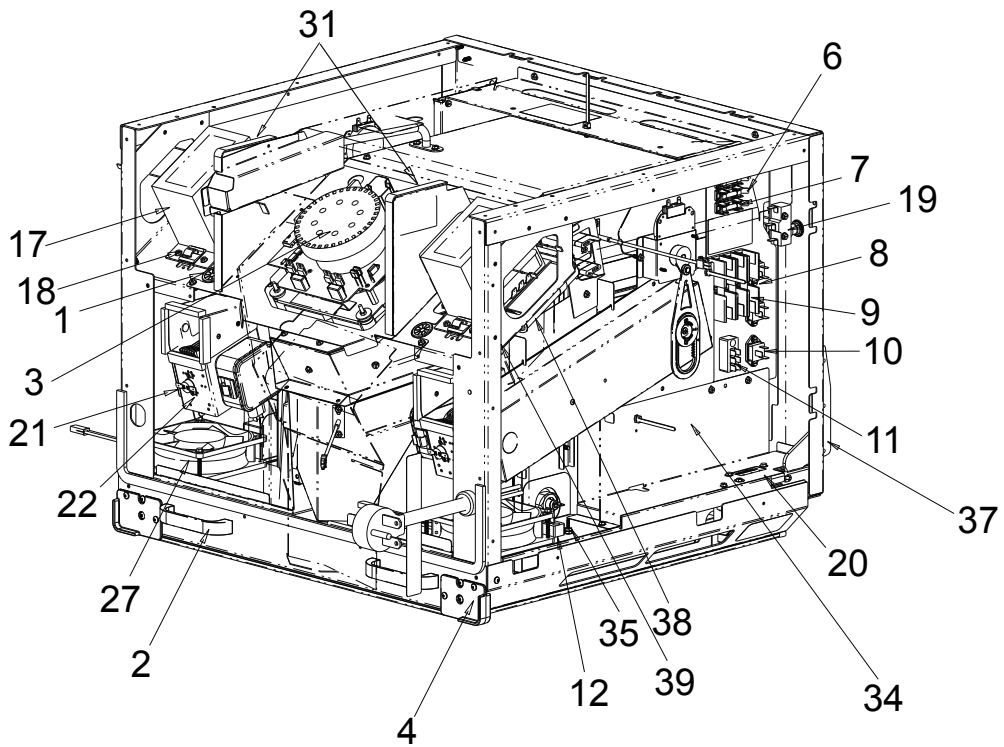
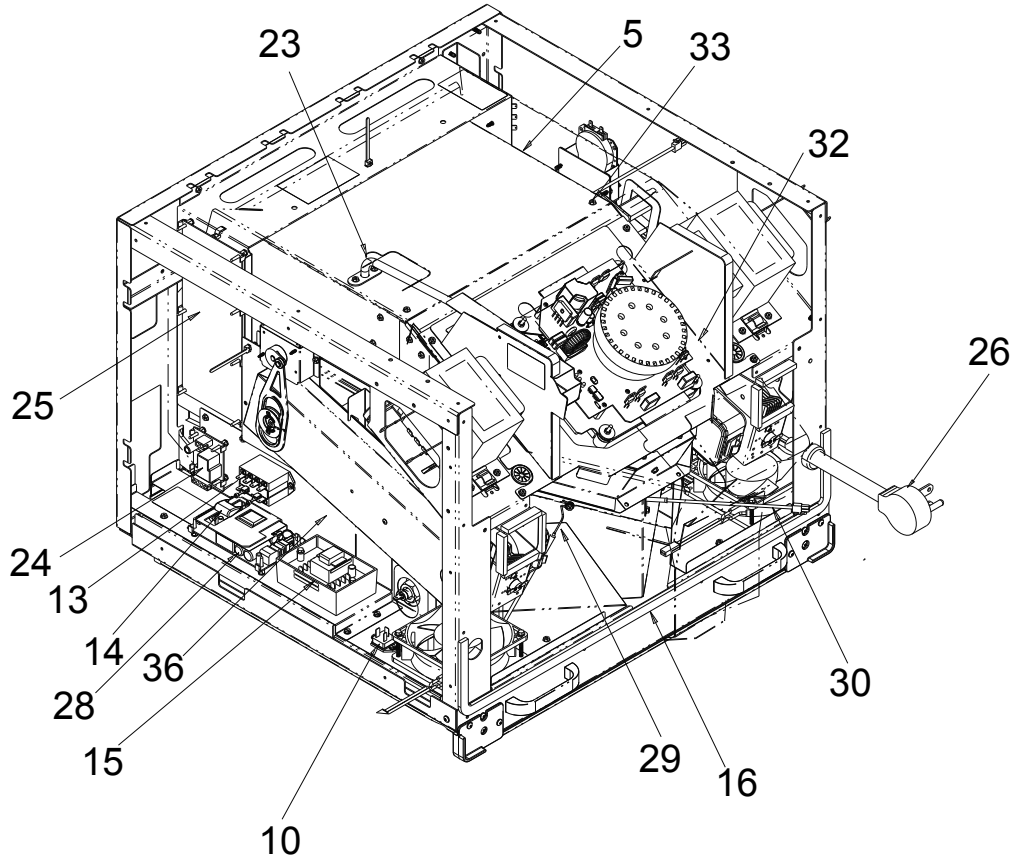
Models and Manufacturing numbers covered:

AXP20

P1333601M

P1333602M

ELECTRICAL, SWITCHES, CONVECTION BLOWER

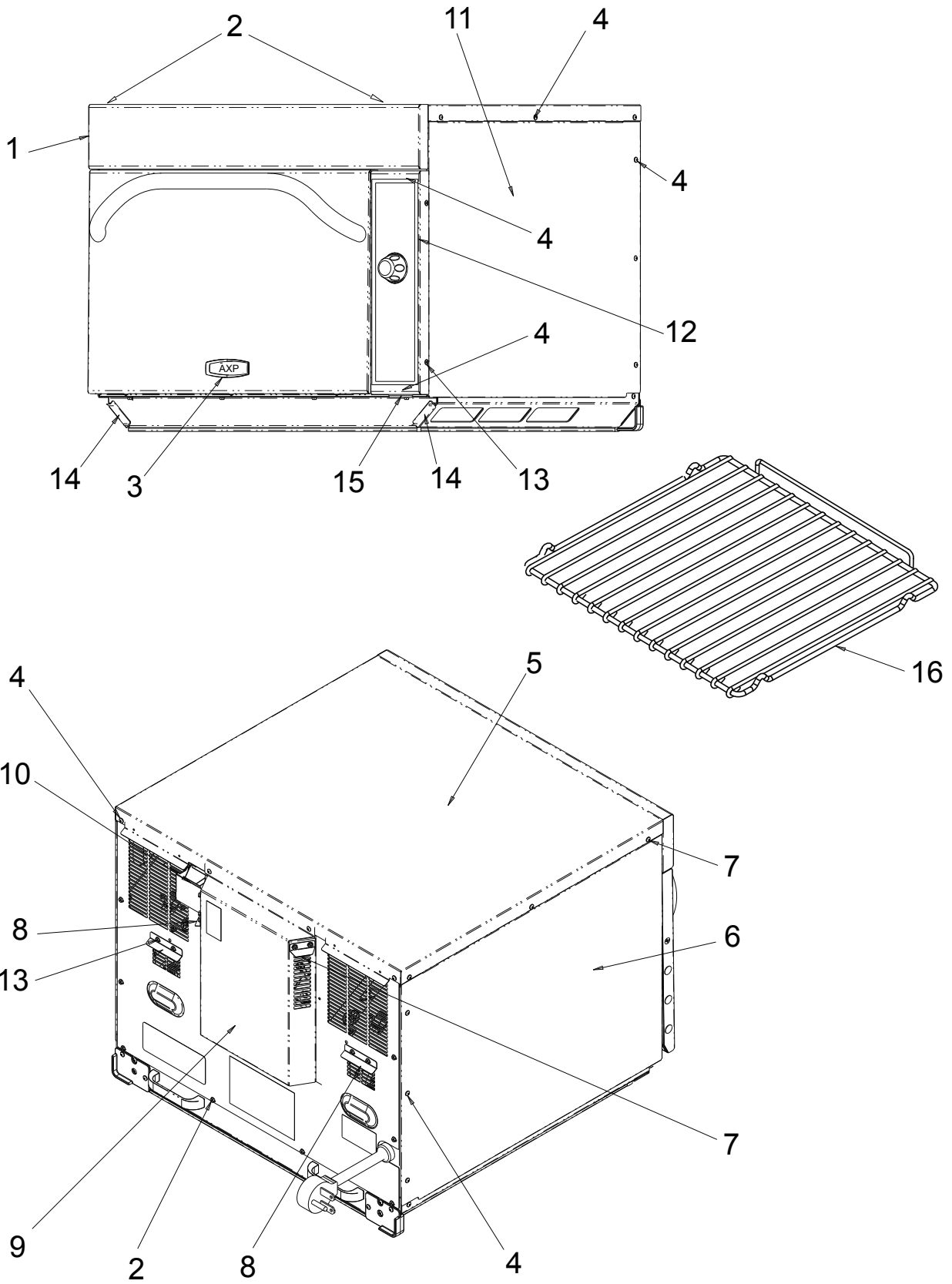


ELECTRICAL, SWITCHES, CONVECTION BLOWER

Reference	Part Number	Description	Quantity
1	M0571003	BUSHING-SNAP	2
2	13095701 12991606	HANDLE-BASEPAN SCREW	2 4
3	59002076 13077801 12991609	CONVECTION MOTOR ASSY GASKET - CONV BLOWER SCREW	1 1 17
4	13086601 13074001	BARRIER-RECIRCULATION SCREW	2 10
5	13084601	INSUL-TOP/SIDES CAVITY	1
6	59001682 13042202	BLOCK-3 POLE FUSE SCREW	1 2
7	M0805105	FUSE-12A	3
8	10091101 12992302	BLOCK-FUSE SCREW	1 2
9	M0805201	FUSE-25A	3
10	59002026 12992302	TRIAC SCREW	4 2
11	B5677215 13042202	BLOCK-TERMINAL SCREW	1 1
12	B5677214 13042202	BLOCK-TERMINAL SCREW	1 1
13	59001981 13042202	RELAY- POWER SCREW	1 2
14	59002017	SNUBBER ASSY	1
15	59002133 12990512	LIMITER ELECTRONIC SCREW	1 2
16	A3030330	GASKET- PER FT	1
17	59002124 12991605	TRANSFORMER - HV SCREW	2 4
18	M0104106	CLIP, CORD	2
19	59002121	KIT, INTERLOCK SWITCH (includes seal)	1
20	59002122 12991605	INTERLOCK SWITCH ASSY SCREW	1 1
21	B5684130 M0229916	THERMAL CUTOUT SCREW - THERMAL CUTOUT	2 4

Reference	Part Number	Description	Quantity
22	59001484 13083201 10966607	MAGNETRON-2M282H DUCT - MAGNETRON GASKET - NEOPRENE	2 2 14 IN
23	13078001 12991609	VENT-CAVITY STEAM SCREW, VENT-CAVITY STEAM	1 2
24	59002117 12990512	BOARD, RELAY MONITOR SCREW	1 2
25	59002114 M0590602 12990522	BOARD, MAIN CONTROL SUPPORT SCREW	1 6 4
26	59004001 M0370011	POWER CORD RELIEF-STRAIN, PWR CORD	1 1
27	59002132 12990515	MOTOR FAN (24 VDC) SCREW	2 4
28	59002118 M0590602	BOARD-24V POWER SUPPLY SUPPORT	1 4
29	59002131	THERMOCOUPLE	1
30	59001709 12991609	SENSOR-TEMP SCREW - SENSOR-TEMP	2 4
31	M0275058	TAPE-FOAM	19 IN
32	13081001	INSUL RETAINER WELD	1
33	12990524	SCREW	2
34	13082802 12991605	PLATE-LH FRNT PARTITION SCREW	1 2
35	M0293511	STUD-#6 SC	1
36	13097601 12991605	PLATE-RH FRNT PARTITION SCREW	1 4
37	59002141 13074001 13087001	HINGE SCREW SEAL-HINGE	2 4 4
38	59001168 A4055405 12990524	CAPACITOR 1.00 STRAP-CAPACITOR SCREW-STRAP CAP.	2 2 2
39	13091701 12990524	RECTIFIER SCREW	2 2
N/S	M0322202	TIE-WIRE	4

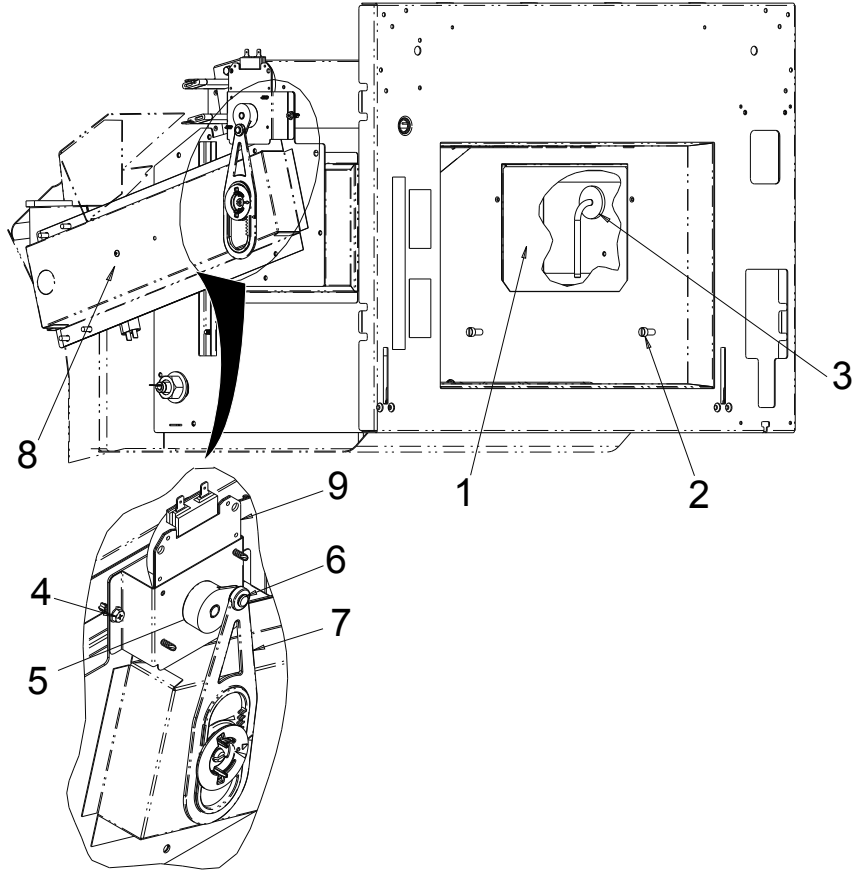
OUTERCASE



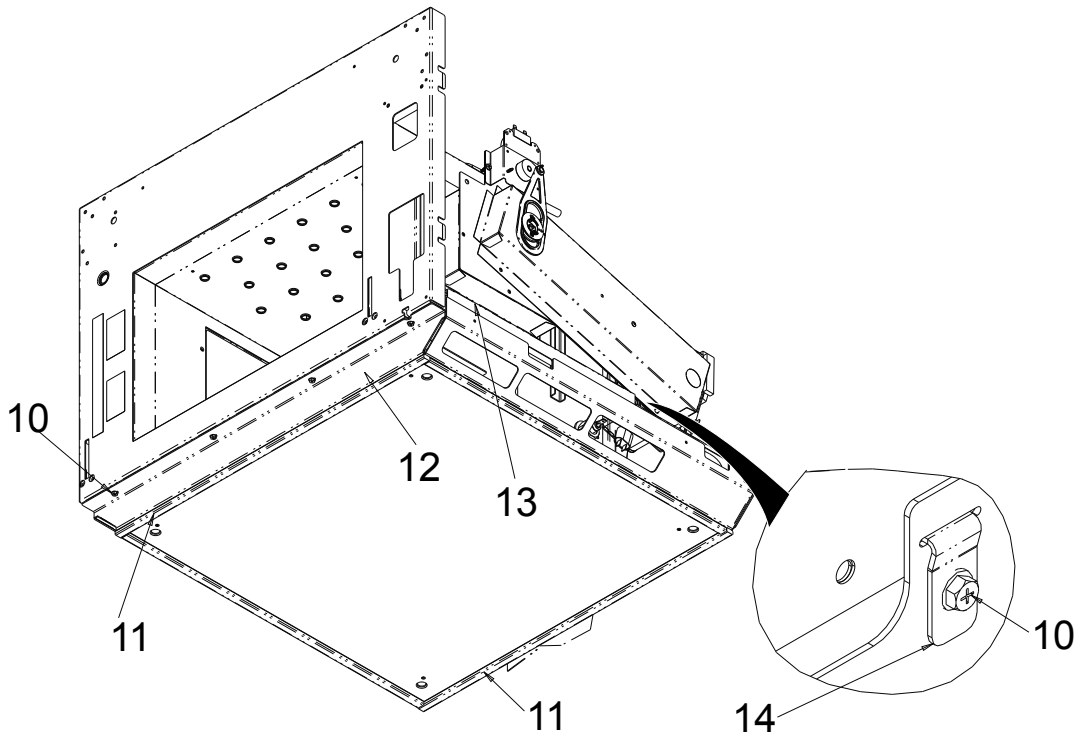
OUTERCASE

Reference	Part Number	Description	Quantity
1	13098502	ESCUTCHEON -TOP	1
2	12991605	SCREW, ESCUTCHEON -TOP	6
3	13079803	NAMEPLATE-AXP	1
4	13074001	SCREW - TORX T-15	A/R
5	59002136	OUTER PANEL, TOP	1
6	59002137	OUTER PANEL RIGHT SIDE	1
7	13086001	CAP-SUMP DRIP	1
8	13082601	CAP-MAG DRIP	3
9	13081902	OUTERCASE BACK	1
10	13086801	HOOD-EXHAUST	1
11	59002138	OUTER PANEL LEFT SIDE	1
12	13079701	ESCUTCHEON-SIDE	1
13	13042001	SCREW	5
14	59002139	FILTER-AIR	2
15	59002092	PLUG-DATA KEY	1
16	59002140	RACK, OVEN	1

ANTENNA



BASEPAN



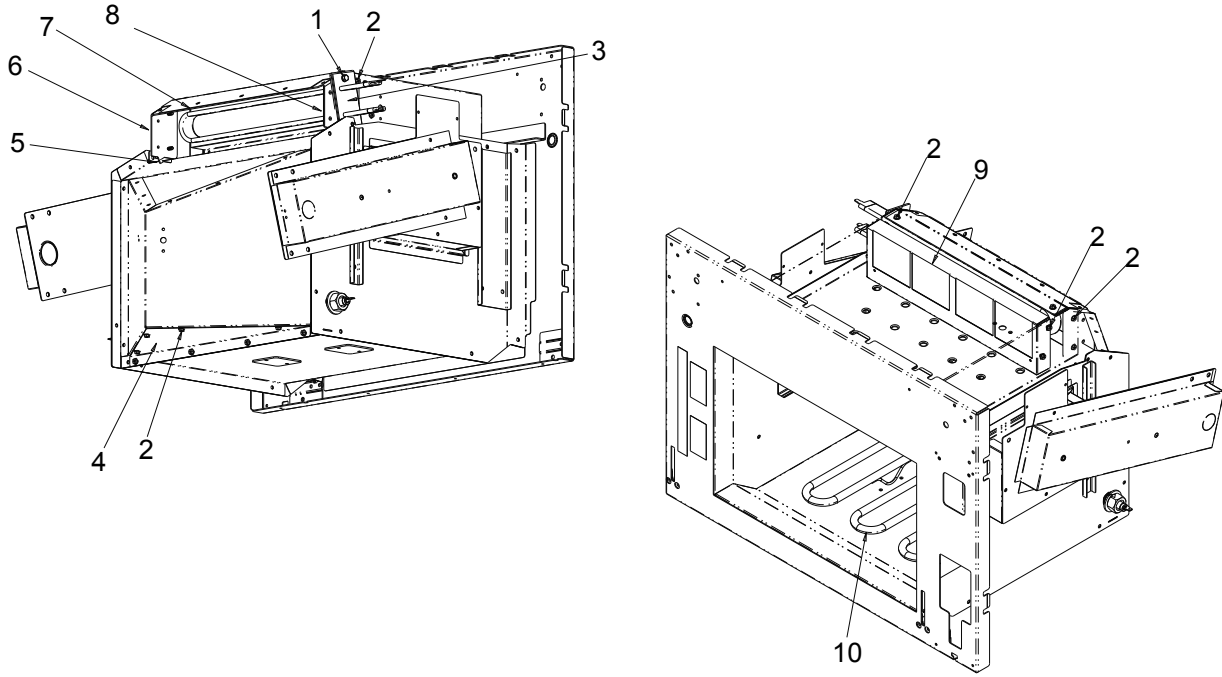
ANTENNA

Reference	Part Number	Description	Quantity
1	14080004	KIT, STIRRER COVER	2
2	13079101	SCREW	2
3	14080002	KIT, ANTENNA & STIRRER COVER	2
4	12991605	SCREW	4
5	12002872	KIT, CAM (FOR ANTENNA MOTOR)	2
6	13083701	RIVET-NYLON	2
7	12002867	KIT, GEAR & RACK	2
8	14080001	KIT, TUNING STUB-AXP	2
9	12002873	KIT, STIRRER MOTOR	2

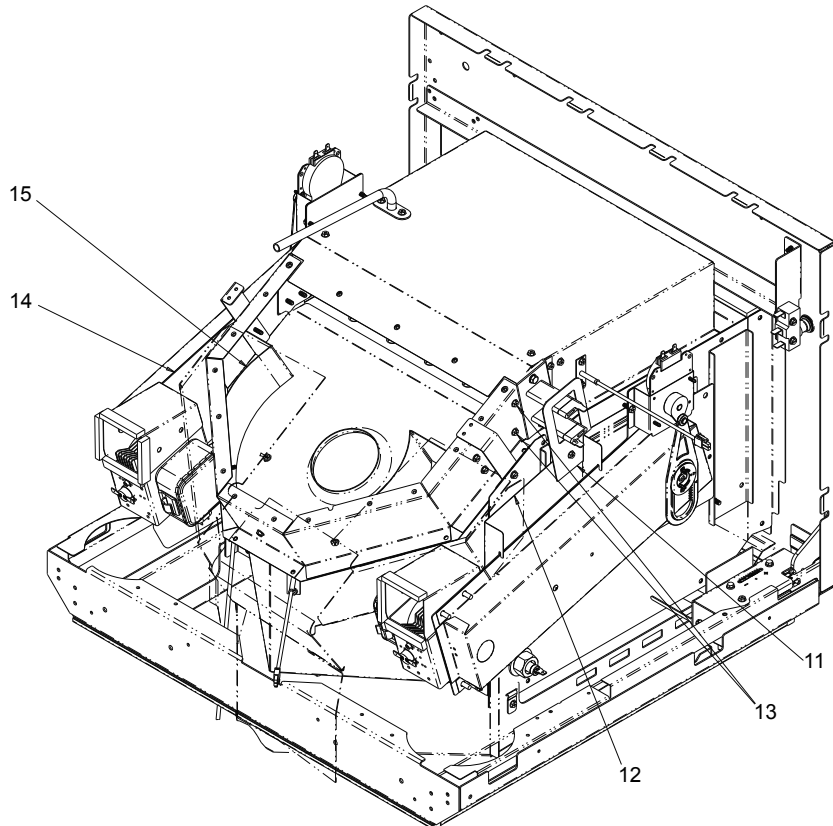
BASE PAN

Reference	Part Number	Description	Quantity
10	12991605	SCREW	6
11	R0000413	GASKET, BASE PAN (213 cm)	84 INCHES
12	59000437	BASE PAN & GASKET ASSY	1
13	13097801	INSUL-HINGE	1
14	13072801	KEY-CAVITY EXPANSION	2

HEATERS



FAN BOX



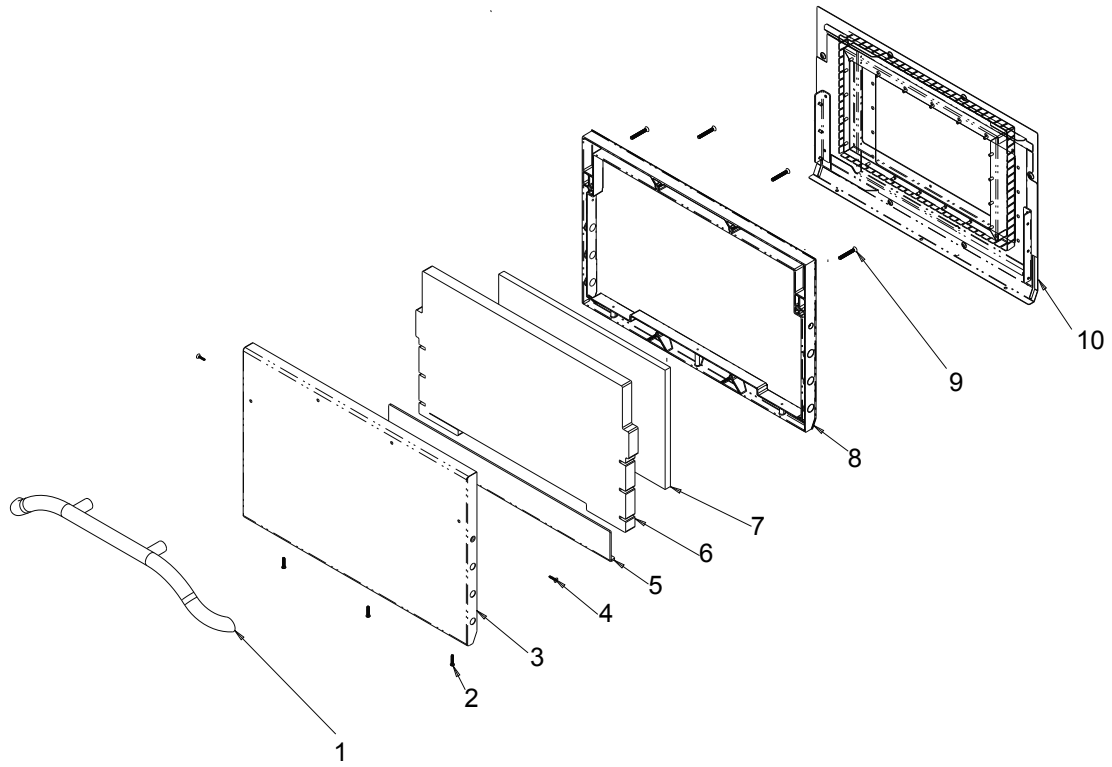
HEATERS

Reference	Part Number	Description	Quantity
1	12992403	SCREW	2
2	12991609	SCREW	16
3	59002125	ELEMENT-CONVECTION - TOP	1
4	13072301	BOTTOM-RETURN PLENUM	1
5	13077701	GASKET-PLENUM NOZZLE	1
6	13076501	PLATE-PLENUM RH	1
7	13076401	PLATE-PLENUM TOP	1
8	13076601	PLATE-PLENUM LH	1
9	13076301	CONVERTER-CATALYTIC	1
10	12002874	KIT, BOTTOM ELEMENT (Requires 15/16 socket)	1

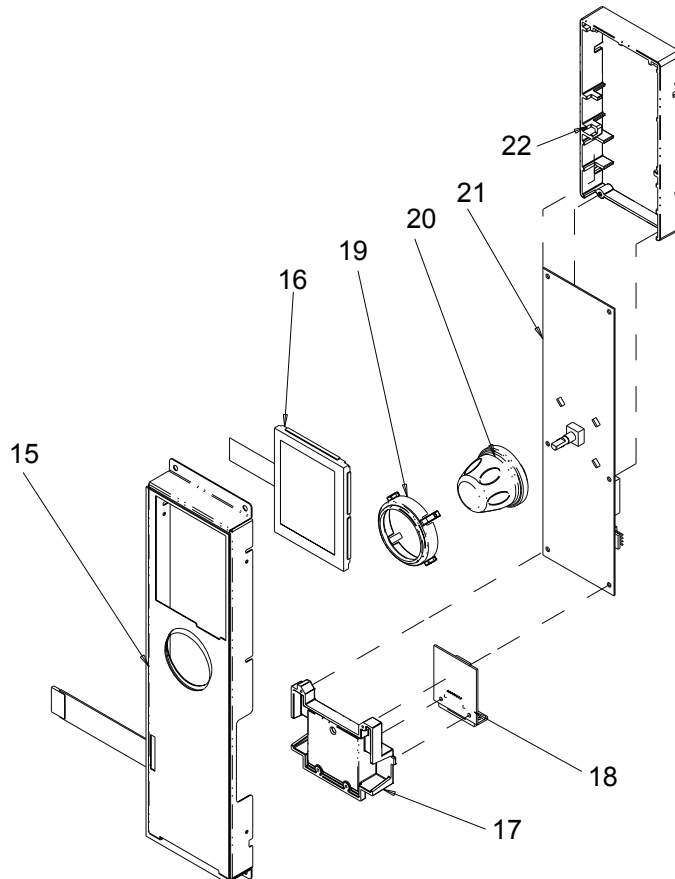
FAN BOX

Reference	Part Number	Description	Quantity
11	13096701	RETAINER-INSUL	1
12	13087602	DUCT-LH	8
13	12991609	SCREW	6
14	13087101	DUCT-RH	1
15	13077901	GASKET-PLENUM RETURN	1

DOOR ASSEMBLY



CONTROL ASSEMBLY



DOOR ASSEMBLY

Reference	Part Number	Description	Quantity
1	59002142	HANDLE-DOOR	1
2	13041504	SCREW	3
3	14080015	KIT, OUTER DOOR	1
4	13083601	SCREW	4
5	13096101	INSUL-OUTER DOOR	1
6	20025401	INSUL-DOOR	1
7	13094201	INSUL-DOOR CHOKE	1
8	13074201	SPACER-DOOR	1
9	13047403	SCREW - HANDLE	4
10	14080014	KIT, INNER DOOR	1
	12991602	SCREW (HINGE)	6
	13098801	PLUG, HOLE	6

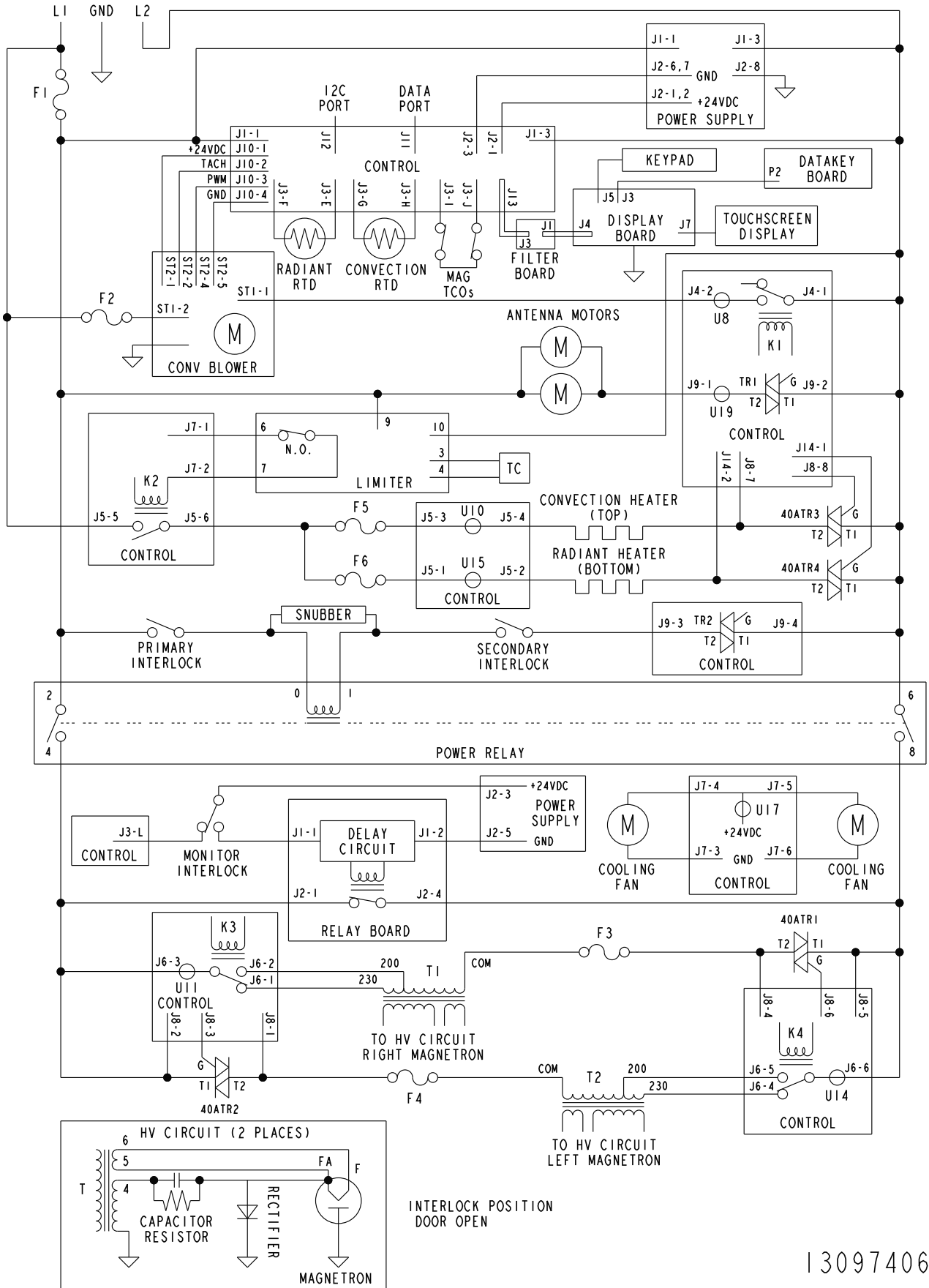
CONTROL ASSEMBLY

Reference	Part Number	Description	Quantity
15	59002149	TOUCH PANEL ASSY	1
16	12002877	KIT, DISPLAY & TOUCH SCREEN	1
17	13079601	HOLDER-DATA KEY	1
18	59002095	BOARD-DATA KEY	1
19	13079401	COLLAR-KNOB	1
20	13078901	KNOB-CONTROL	1
21	14080008	KIT DISPLAY & FILTER BOARD	1
22	13079501	HOLDER- CONTROL	1
N/S	13087401	HARNESS-DATA KEY	1

SUPPLEMENTAL INFORMATION

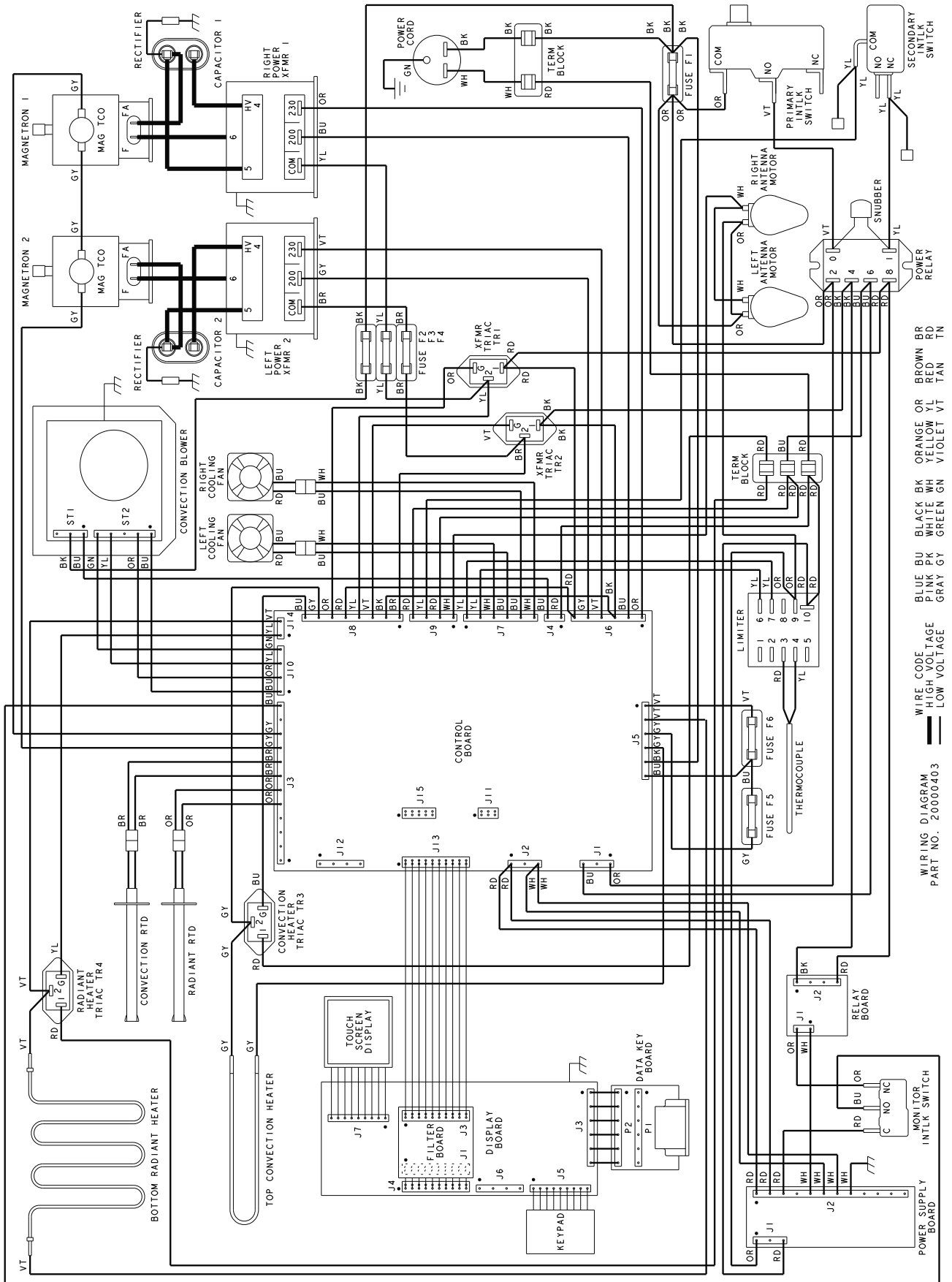
Reference	Part Number	Description	Quantity
6-1	13097202	HARNESS, MAIN	1
6-2	13017713	WIRE, JUMPER MAG "FA" TO CAP	1
6-3	13087301	HARNESS CTRL BD TO FLTR BD	1
6-4	13087401	HARNESS DSPLY BD TO DKEY BD	1
6-6	12696201	HARNESS, HV	1

SCHEMATIC



13097406

WIRING DIAGRAM



SCHMATIC / WIRING DIAGRAM

Reference	Part Number	Description	Quantity
6-1	13097406	SCHEMATIC	1
6-2	20000403	WIRING DIAGRAM	1