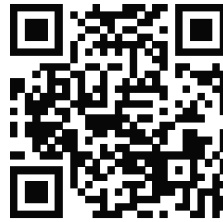


Place this manual in the Toaster section
of your Equipment Manual.
Manufactured exclusively for
McDONALD'S®

BY
ANTUNES
180 KEHOE BLVD.
CAROL STREAM, ILLINOIS 60188, U.S.A.
PHONE: +1-630-784-1000
TOLL FREE: +1-877-392-7854
FAX: +1-630-784-1650
www.antunes.com



Display Case
Scan with mobile device or enter URL
for product and service information
<http://tiny.cc/jaja-DC>

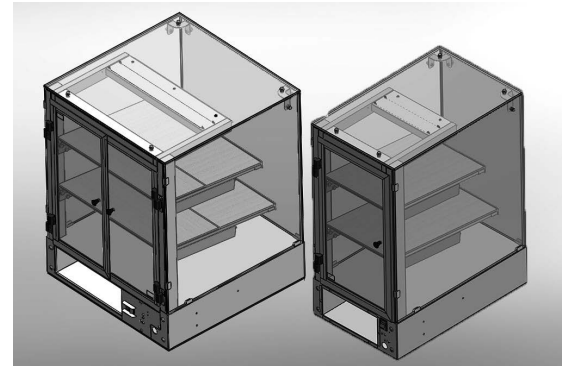


TABLE OF CONTENTS

Owner Information	2	Installation	4
General	2	Unpacking.....	4
Service/Technical Assistance	2	Installing the Shelves (model DC-14).....	4
Warranty Information	2	Installing the Shelves (model DC-22).....	4
Specifications	3	Location	4
		Daily Cleaning	5
		DC-14 Replacement Parts	6
		DC-22 Replacement Parts	7
		Wiring Diagram	8
		Notes	9

LIMITED WARRANTY

The Antunes Food Service Equipment Division of A.J. Antunes & Co. provides the following limited warranty to the original purchaser of all McDonald's Equipment. All components are warranted against defects in the material and workmanship for a period of two (2) years from date of original installation.

If any part becomes defective during the period of this Warranty, Antunes Food Service will pay labor costs to an Authorized Service Agent to replace the part plus travel expenses.

WARRANTY EXCLUSIONS

- The cost of Installation.
- Equipment that has been damaged due to shipment. Purchaser should make damage claim directly upon carrier.
- Alteration, misuse, abuse.
- Improper storage or handling.
- Improper maintenance.
- Failure to follow proper Installation instructions, including electrical connection.

- Improper or unauthorized repairs.
- Scheduled Maintenance procedures as outlined in your MRC Card.
- This Warranty does not cover Consumable items.
- Water pressure problems or contamination problems such as foreign material in water lines or inside solenoid valves due to an incoming water source.
- Freight, foreign, excise, municipal or other sales or use taxes.
- Consequential damages such as loss of profit, loss of time, the cost of repairing or replacing other property which is damaged, or any other incidental damage of any kind.

Antunes Food Service reserves the right to make changes in design or add improvements on any products. The right is always reserved to modify Equipment because of factors beyond our control and government regulation. Changes to Equipment do not constitute a warranty charge. This warranty is exclusive and is in lieu of all other warranties, expressed or implied, including any implied warranty of merchantability or fitness for a particular purpose, each of which is expressly disclaimed. The remedies described above are exclusive, and in no event shall A.J. Antunes & Co. or any of its Divisions be liable for special consequential or incidental damages for the breach or delay in the performance of this warranty.

This manual is for the exclusive use of licensees and employees of McDonald's Systems, Inc..
© McDonald's Corporation All Rights Reserved

DC-14 AND DC-22 DISPLAY CASES

OWNER INFORMATION

General

Read this manual before installing or operating the display case. It provides the necessary safety, installation, and operating procedures.

This display case is manufactured from the finest materials available and assembled to our strict quality standards. This unit has been tested at the factory to ensure dependable, trouble-free operation.

Service/Technical Assistance

If you experience any problems with the installation or operation of your unit, contact Antunes Technical Service at +1-877-392-7854 (toll free).

Warranty Information

Please read the full text of the Limited Warranty in this manual.

If the unit arrives damaged, contact the carrier immediately and file a damage claim with them. Save all packing materials when filing a claim. Freight damage claims are the responsibility of the purchaser and are not covered under warranty.

The warranty does NOT extend to:

- Damages caused in shipment or damage as result of improper use.
- Installation of electrical service.
- Normal maintenance as outlined in this manual.
- Malfunction resulting from improper maintenance.
- Damage caused by abuse or careless handling.
- Damage from moisture into electrical components.
- Damage from tampering with, removal of, or changing any preset control or safety device.

Fill in the information below and have it handy when calling Antunes Technical Service for assistance. The serial number is on the specification plate located on the rear of the unit.

Purchased From: _____

Date of Purchase: _____

Model No.: _____

Serial No.: _____

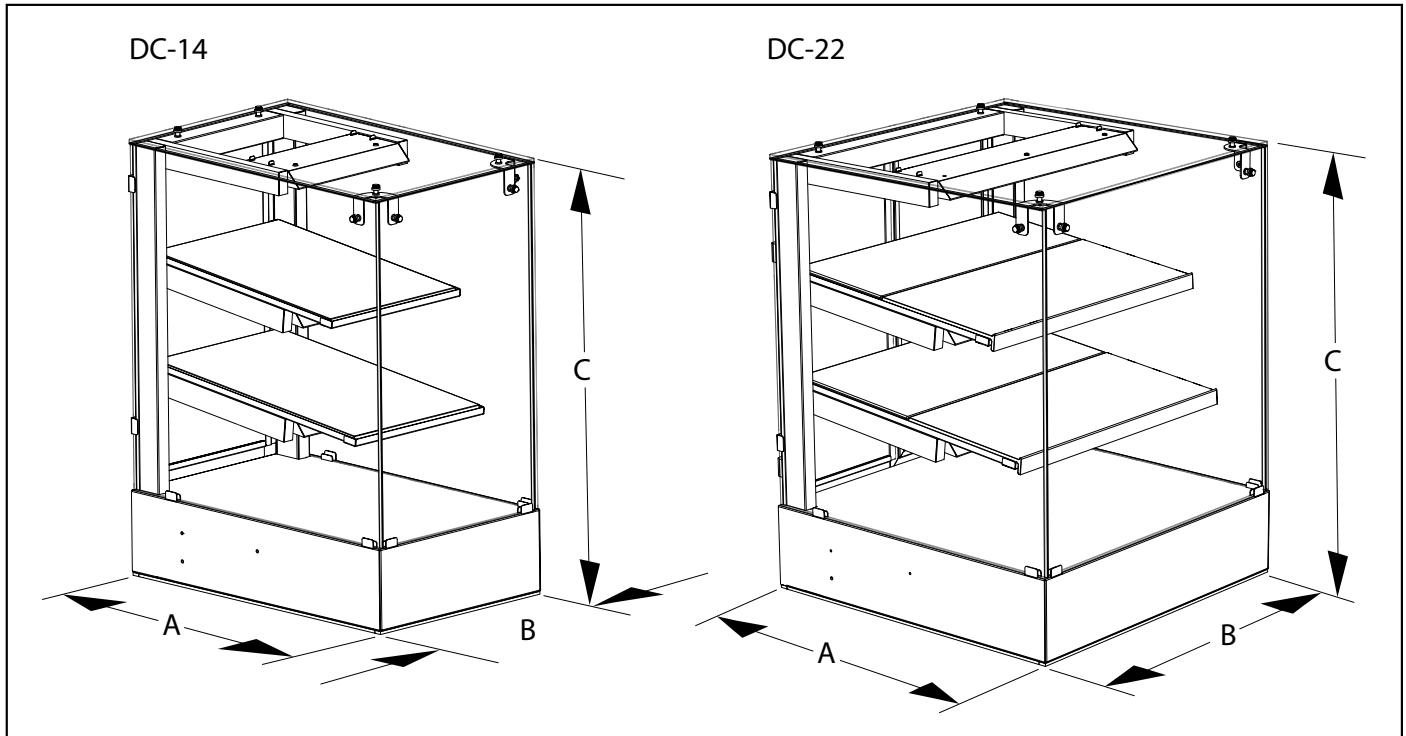
Mfg. No.: _____

Use only genuine Antunes replacement parts in this unit. Use of replacement parts other than those supplied by the manufacturer will void the warranty.

IMPORTANT! Keep these instructions for future reference. If the unit changes ownership, be sure this manual accompanies the equipment.

DC-14 AND DC-22 DISPLAY CASES

SPECIFICATIONS



Model No.	Mfg. No.	Dimensions			Electrical Specifications			
		Height (A)	Width (B)	Depth (C)	Volts	Watts	Hertz	Plug
DC-14	9500719	28" (711.2 mm)	14" (355.6 mm)	22" (558.8 mm)	120	20	50/60	NEMA 5-15 P
DC-22	9500718	28" (711.2 mm)	22" (558.8 mm)	22" (558.8 mm)	120	40		

DC-14 AND DC-22 DISPLAY CASES

INSTALLATION

Unpacking

The large box contains:

- The display case
 - Two shelves (DC-14)
Four shelf pieces, two front and two rear (DC-22)
 - The owner's manual
2. Remove the foam inserts from the box.
 3. Carefully remove the display case.
 4. Unpack the shelves.

NOTE: If any parts are missing or damaged, contact Antunes Customer Service IMMEDIATELY at +1-877-392-7856 (toll free).

4. Perform the daily cleaning steps found in publication PR 80, *Bakery Cases* (P/N 1012042).

Location

When placing the display case into service, observe these guidelines:

- Do NOT block or cover any openings on the unit.
 - Keep away from heated surfaces.
1. Place the display case in the position designated by McDonald's.
 2. Load product into the display case.
 3. Insert the appropriate card into the display card holder.
 4. Connect the power supply to an appropriate outlet.
 5. To turn on the display case lights, press the rocker switch to the on position.

Installing the Shelves (model DC-14)

1. Gently slide one shelf into the bottom shelf support. The lip at the front edge of the shelf will extend over the shelf support. (The shelf support will not be visible when viewed from the front of the cabinet.)
2. Repeat for the upper shelf.

Installing the Shelves (model DC-22)

1. Gently slide one shelf front into the bottom shelf support. The lip at the front edge will extend over the shelf support. (The shelf support will not be visible when viewed from the front of the cabinet.)
2. Gently slide the rear half of the shelf into the shelf support until it rests snugly against the shelf front.
3. Repeat for the upper shelf.

DAILY CLEANING

1. Remove all food from the cabinet.
2. Remove the food trays and product label tags and take them to the back sink. Remove the holding time labels from the food trays before cleaning.
3. Wash, rinse, and sanitize the trays and label tags in the three-compartment sink or Warewash machine. Allow them to air dry.
4. Wipe and discard crumbs from inside the cabinet with a clean, sanitizer-soaked towel. Discard the towel in the soiled towel bucket after use.
5. Remove the shelves.
6. Spray a clean paper towel with one or two sprays of KAY Peroxide Multi-Surface Cleaner & Disinfectant Solution. Wipe the glass, cabinet door, and door knobs until completely dry. Repeat until all glass areas (exterior and interior) are clean. Discard the paper towels in a trash receptacle.
7. Wash the shelving in the 3-compartment sink with KAY® All Purpose Super Concentrate Solution and a clean, sanitizer-soaked towel. Discard the towel in the soiled towel bucket immediately after use. If necessary, use a KAY® NO-SCRATCH™ Pad to remove hardened soils.

△ Caution

Do not use an abrasive pad on the shelves. It will scratch and dull the surfaces.

8. Rinse the shelves with water then sanitize them with KAY® SolidSense Sanitizer for 1 minute.
9. Remove the shelves from the sanitizer solution and allow them to air dry. Discard the towel in the soiled towel bucket immediately after use.
10. Replace the shelves in the cabinet.
11. Replace the food trays.

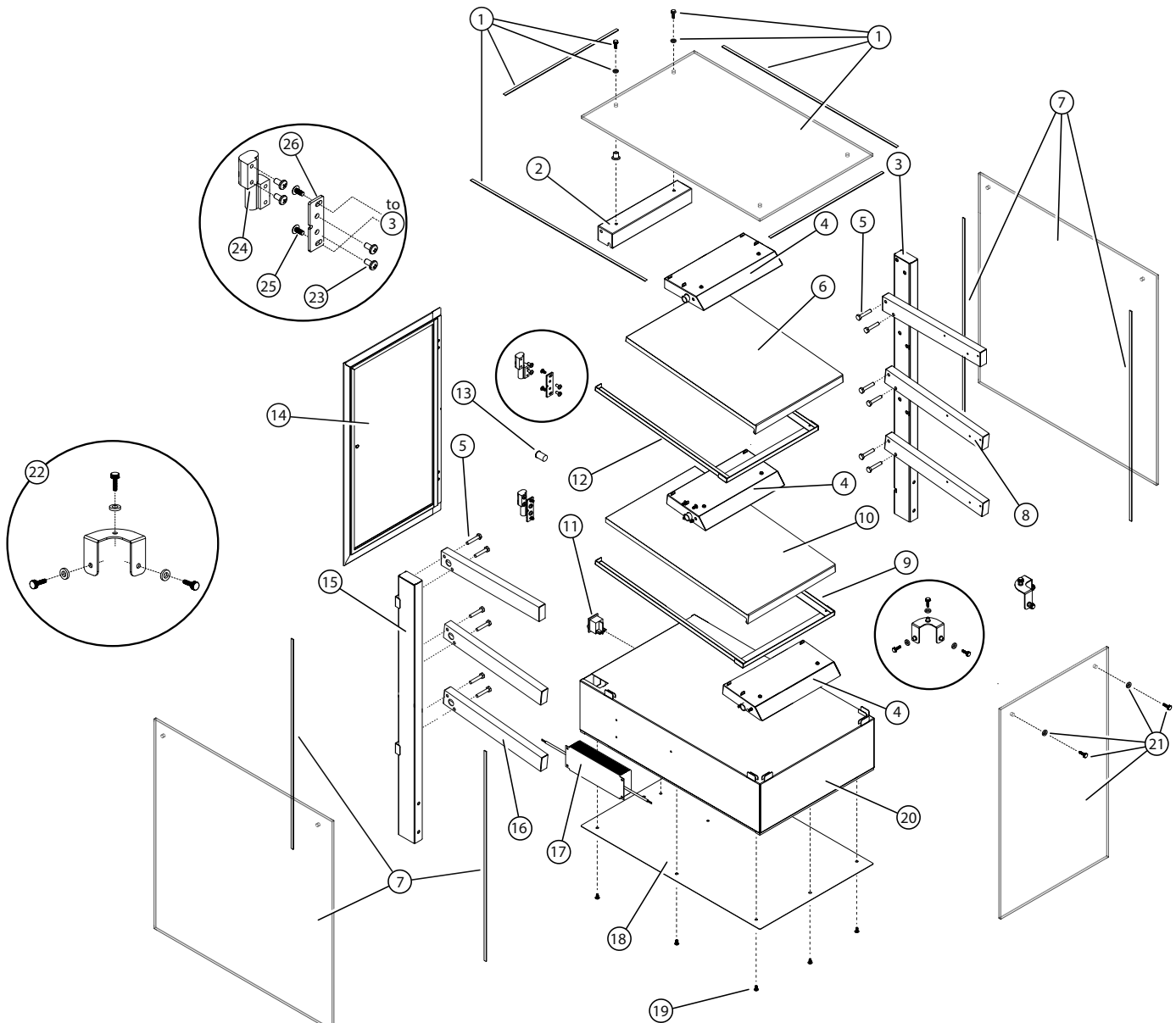
DC-14 AND DC-22 DISPLAY CASES

DC-14 REPLACEMENT PARTS

Item	Part No.	Description	Qty.
1	7001876	Top glass kit	1
2	0024066	Top glass support	1
3	0024127	Support, inner BKT-LH	1
4	7001884	Light assembly kit	3
5	325P193*	Screw, hex head, 1/4-20 x 1.375"	12
6	7001881	Top shelf kit	1
7	7001878	Side glass kit	2
8	0024012	Tube, Support LH	3
9	0024064	Support, shelf lower	1
10	7001882	Bottom shelf kit	1
11	7001580	Power switch kit	1
12	0024065	Support, shelf upper	1
13	2110150	Magnet, snap-in 9/16	1

Item	Part No.	Description	Qty.
14	7001883	Door kit	1
15	0024078	Support, outer BKT-RH	1
16	0024011	Tube, support RH	3
17	7001880	Power supply kit	1
18	0508891	Base cover	1
19	308P157*	Screw, tap 8-32 x 3/8" LG	8
20	0024063	Base weldment	1
21	7001877	Front glass kit	1
22	7001879	Corner bracket kit	2
23	310P162*	Screw, mach. #10-24 x 3/8"	8
24	7001885	Left door hinge kit	2
25	308P157*	Screw, tap 8-32 x 3/8" LG	4
26	0508515	Hinge plate	2

* Available in packages of ten



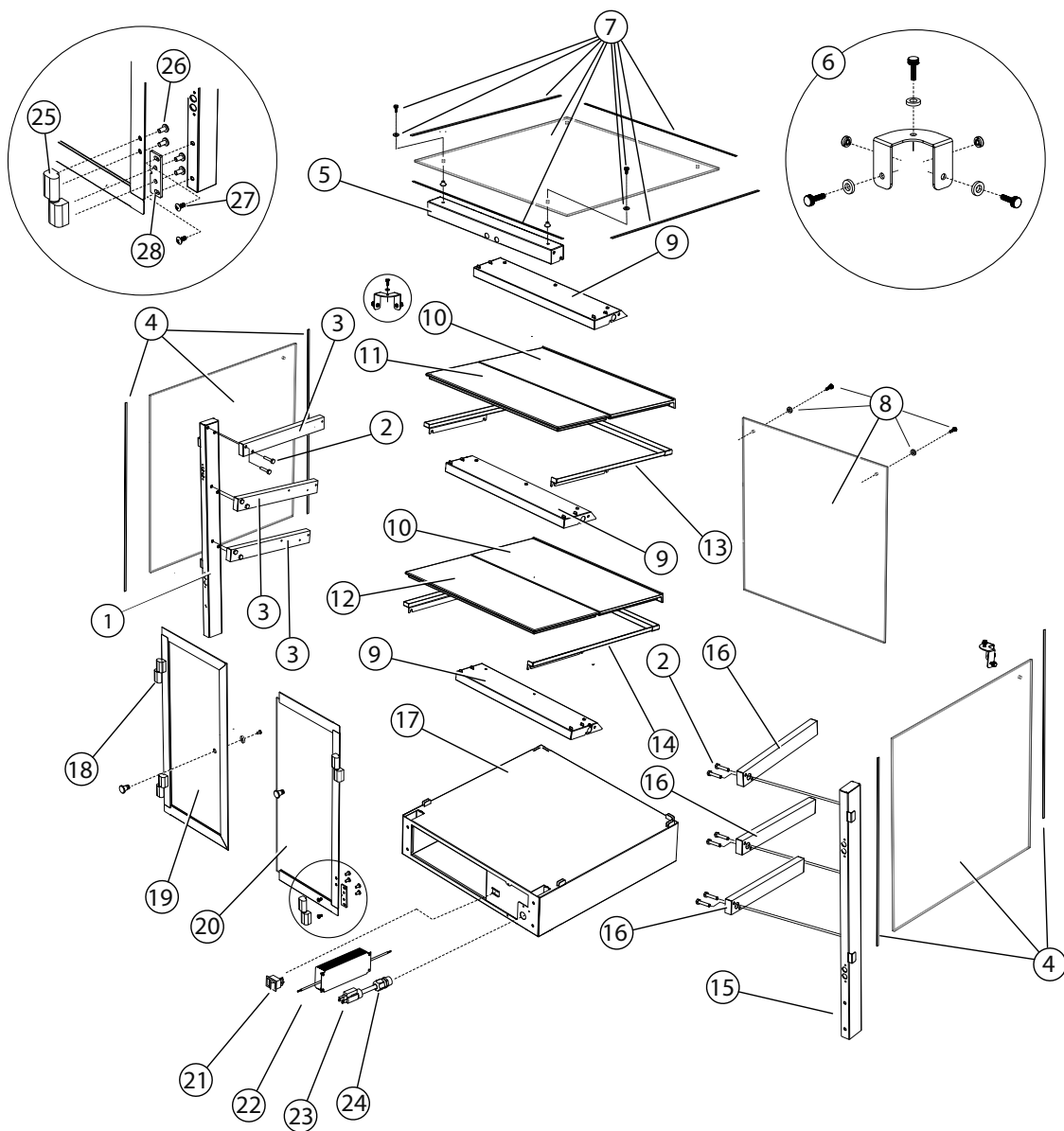
DC-14 AND DC-22 DISPLAY CASES

DC-22 REPLACEMENT PARTS

Item	Part No.	Description	Qty.
1	0024077	Support, outer BKT-LH	1
2	325P193*	Screw, hex head, 1/4-20 X 1.375"	12
3	0024012	Tube, Support LH	3
4	7001878	Side glass kit	1
5	0024943	Top glass support	1
6	7001879	Corner bracket kit	2
7	7001886	Top glass kit	1
8	7001887	Front glass kit	1
9	7001891	Light assembly kit	3
10	7001890	Front shelf kit	2
11	7001888	Top shelf rear kit	2
12	7001889	Bottom shelf rear kit	1
13	0024038	Upper shelf support	1
14	0024026	Lower shelf support	1
15	0024079	Support, outer BKT-RH	1

Item	Part No.	Description	Qty.
16	0024011	Tube, Support RH	3
17	0024010	Main housing	1
18	7001885	Left door hinge kit	2
19	7001892	Left door kit	1
20	7001893	Right door kit	1
21	7001580	Power switch kit	1
22	7001880	Power supply kit	1
23	0700463	Power cord, 14/3 5-15P	1
24	0400251	Strain relief, cord con	1
25	7001896	Right door hinge kit	2
26	310P162*	Screw, mach. #10-24 X 3/8"	16
27	308P157*	Screw, tap 8-32 X 3/8" LG	8
28	0508515	Hinge plate	4

* Available in packages of ten





Corporate Headquarters

Carol Stream, Illinois

Phone: +1 (630) 784-1000

Toll Free: +1 (800) 253-2991

Fax: +1 (630) 784-1650

China Facility

Suzhou, China

Phone: +86-512-6841-3637

Fax: +86-512-6841-3907