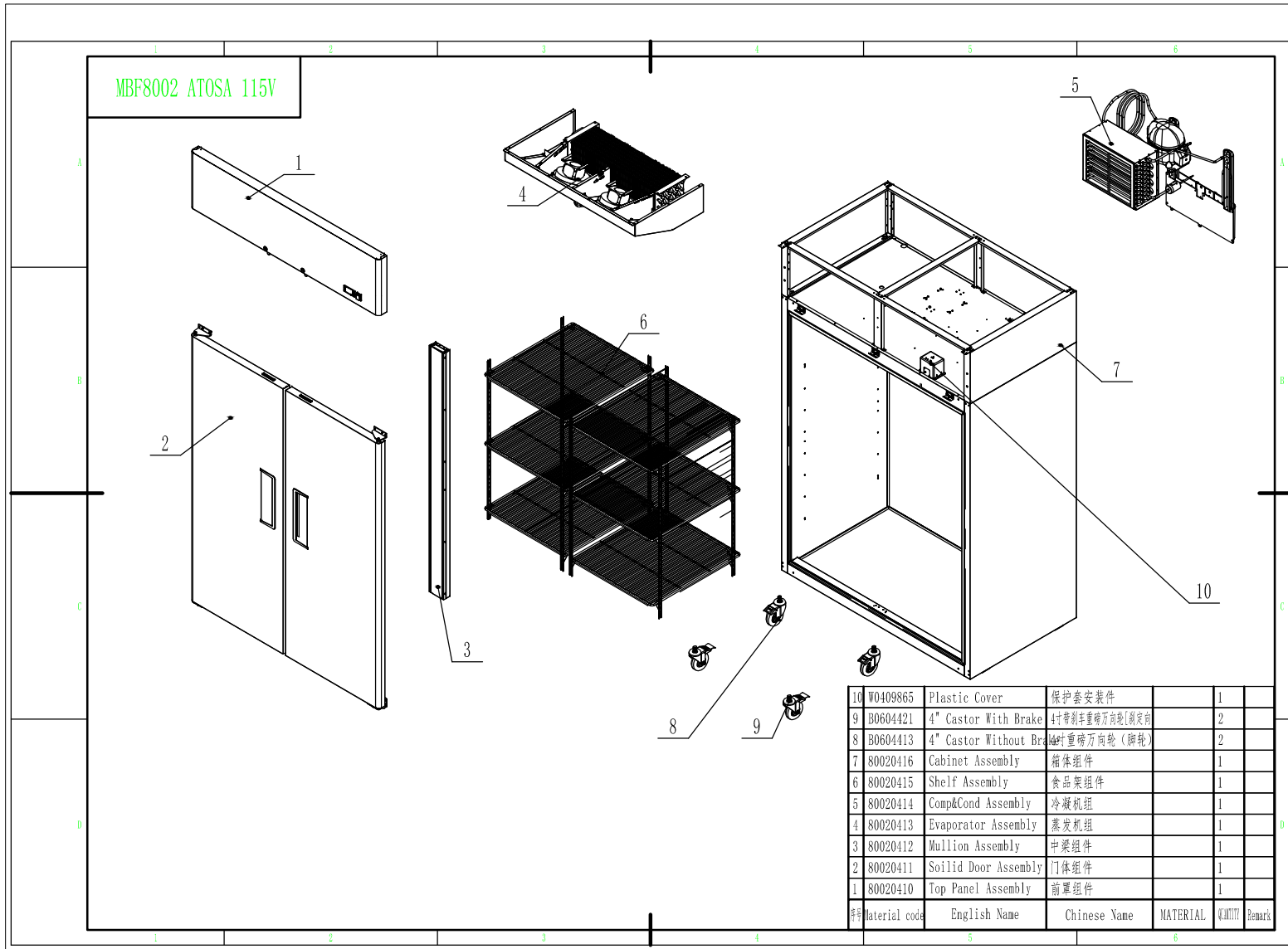
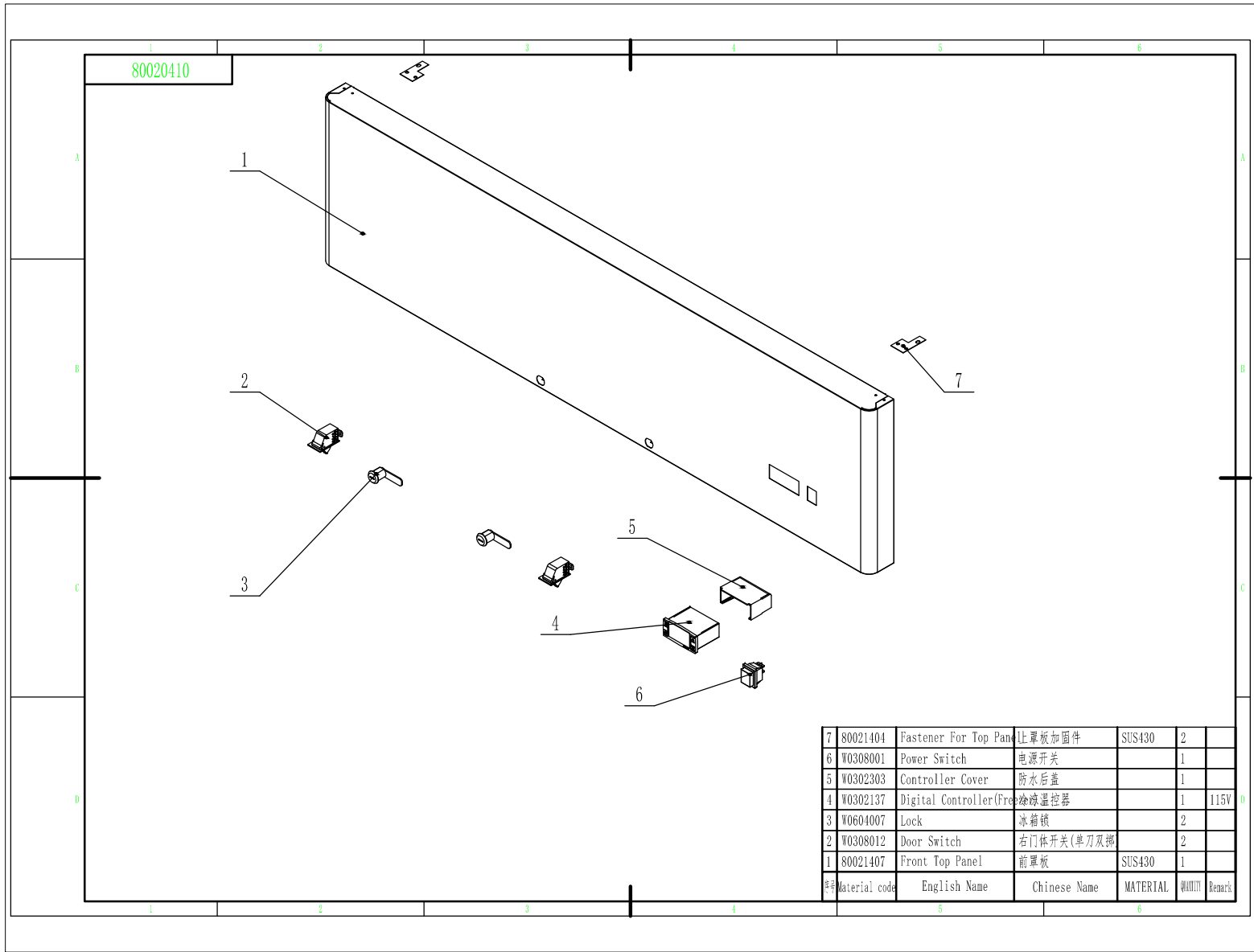


MBF8002 ATOSA 115V



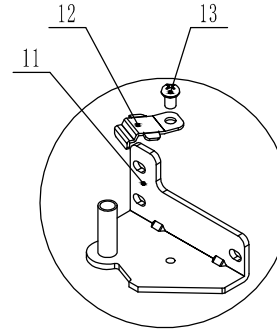
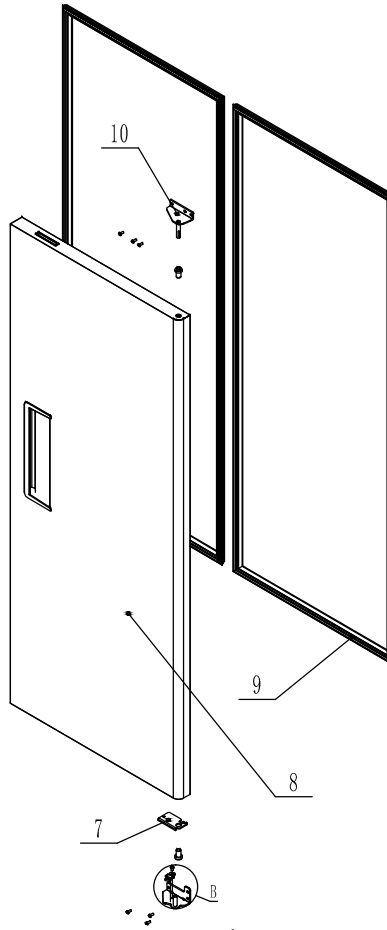
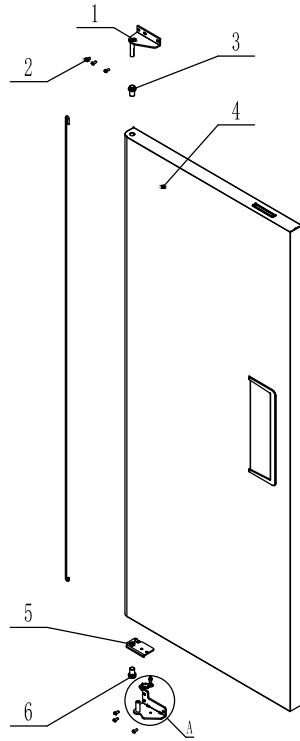
10	W0409865	Plastic Cover	保护套安装件		1	
9	B0604421	4" Castor With Brake	4寸带刹车重磅万向轮(刹定向)		2	
8	B0604413	4" Castor Without Brake	4寸重磅万向轮(脚轮)		2	
7	80020416	Cabinet Assembly	箱体组件		1	
6	80020415	Shelf Assembly	食品架组件		1	
5	80020414	Comp&Cond Assembly	冷藏机组		1	
4	80020413	Evaporator Assembly	蒸发器组		1	
3	80020412	Mullion Assembly	中梁组件		1	
2	80020411	Sollid Door Assembly	门体组件		1	
1	80020410	Top Panel Assembly	前罩组件		1	
材料	Material code	English Name	Chinese Name	MATERIAL	QTY	Remark



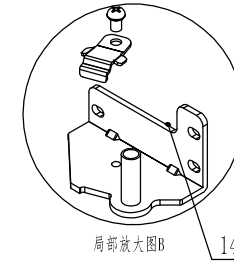
80020410

7	80021404	Fastener For Top Panel	上罩板加固件	SUS430	2	
6	W0308001	Power Switch	电源开关		1	
5	W0302303	Controller Cover	防水后盖		1	
4	W0302137	Digital Controller(Freezer)	冷冻温控器		1	115V
3	W0604007	Lock	冰箱锁		2	
2	W0308012	Door Switch	右门体开关(单刀双掷)		2	
1	80021407	Front Top Panel	前罩板	SUS430	1	
材料	Material code	English Name	Chinese Name	MATERIAL	数量	Remark

80020411

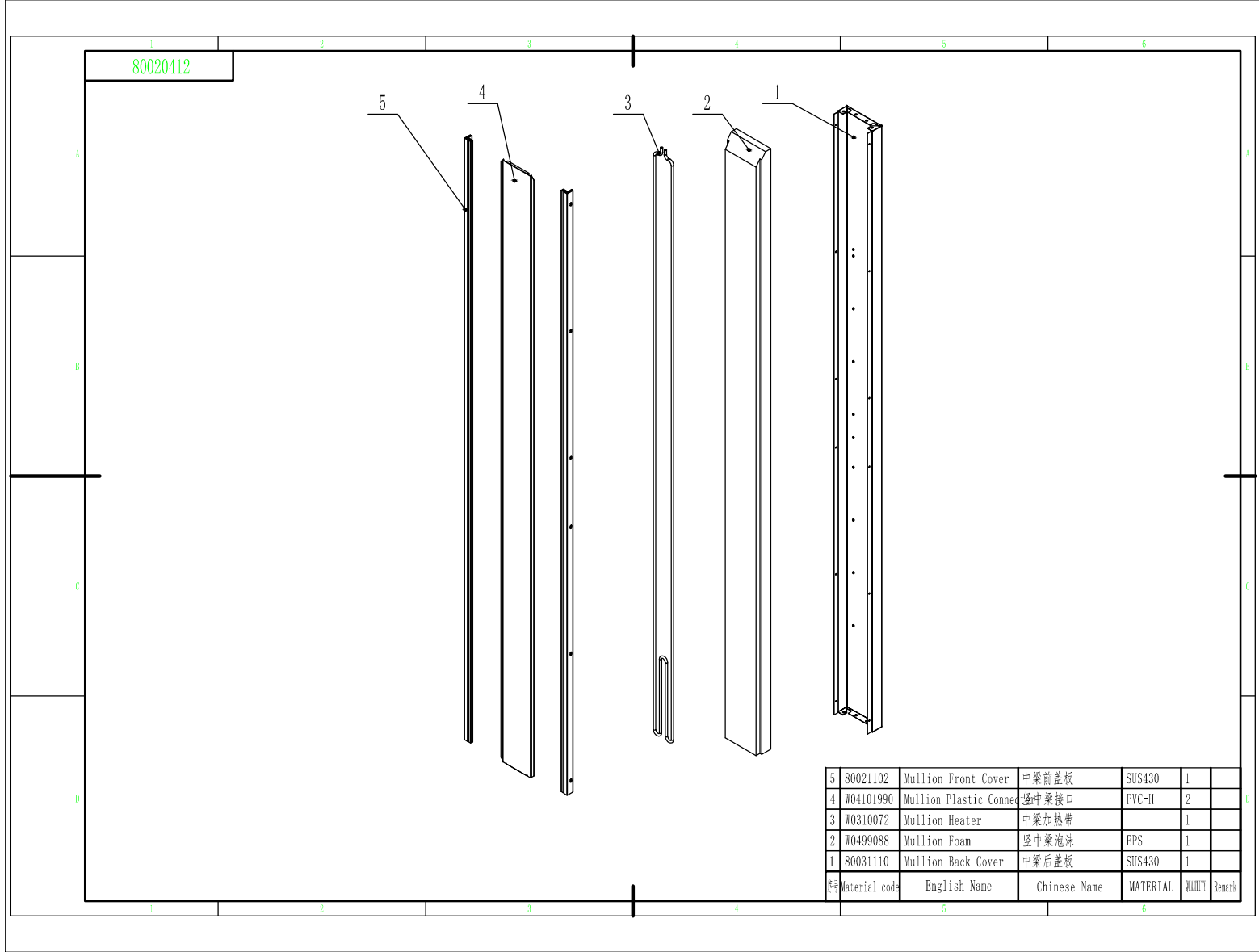


局部放大图A

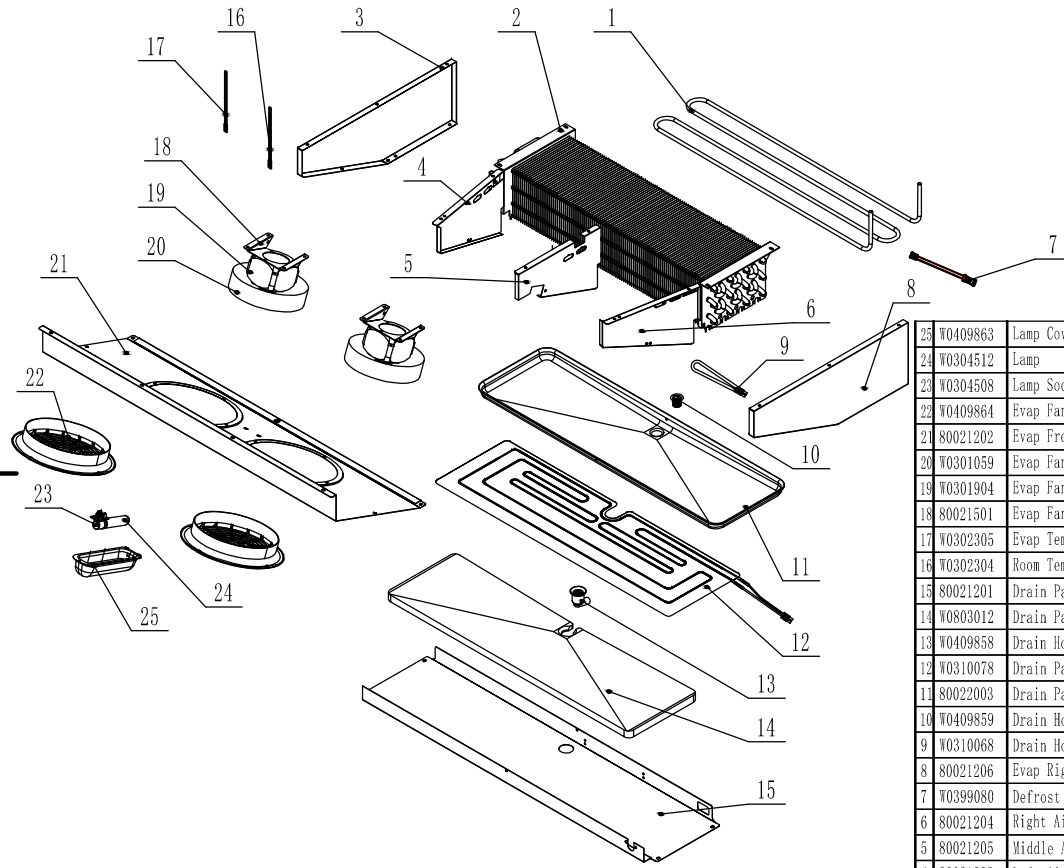


局部放大图B

15	W0604921	Door Spring Bar	门体发条		2	
14	W0604037	Right-Bottom Hinge	右下铰链	SUS304	1	
13	B0599270	SS Screw M6x8	M6x8不锈钢螺丝		2	
12	W0604038	Door Stopper-Bottom	门自锁装置-下	SUS304	2	
11	W0604036	Left-Bottom Hinge	左下铰链	SUS304	1	
10	W0604033	Right-Top Hinge	右上铰链	SUS304	1	
9	W0404515	Door Gasket	门封条		2	
8	80020201	Right Door	右门体		1	
7	W0604030	Door Brake - Right	门自锁装置-右	SUS304	1	
6	W0409843	Door Shaft Sleeve-Bott	门体轴套	PA66	2	
5	W0604031	Door Brake - Left	门自锁装置-左	SUS304	1	
4	80020202	Left Door	左门体		1	
3	W0409842	Door Shaft Sleeve-Top	门体轴套	PA66	2	
2	B0502207	SS Screw M5x12	M5x12不锈钢螺丝		12	
1	W0604032	Left-Top Hinge	左上铰链	SUS304	1	
材料	Material code	English Name	Chinese Name	MATERIAL	数量	Remark

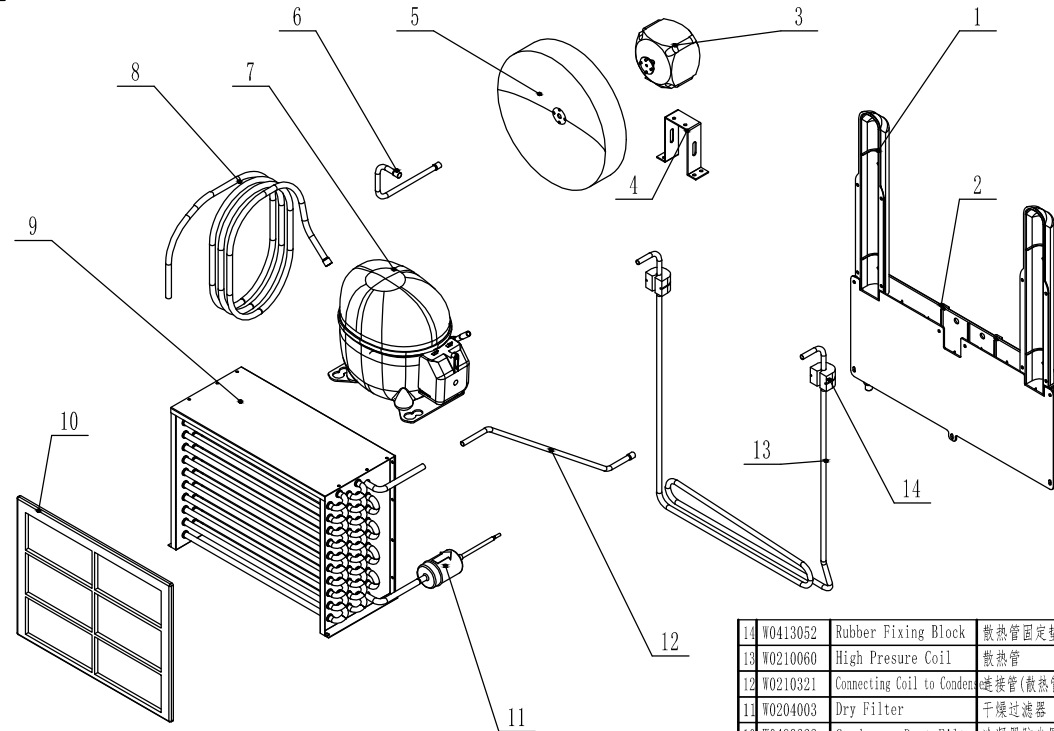


80020413



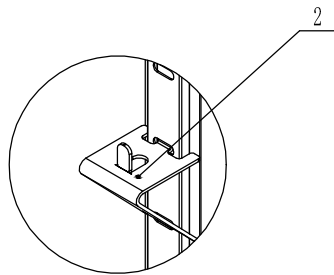
25	W0409863	Lamp Cover	灯罩	PC1302	1	
24	W0304512	Lamp	灯		1	
23	W0304508	Lamp Socket	灯座		1	
22	W0409864	Evap Fan Motor Cover	蒸发风机罩	ABS	2	
21	80021202	Evap Front Cover	蒸发前盖板	SUS430	1	
20	W0301059	Evap Fan Blade	蒸发风叶	AL/φ172	2	
19	W0301904	Evap Fan Motor	蒸发风机		2	
18	80021501	Evap Fan Bracket	蒸发风机支架	SUS304	2	
17	W0302305	Evap Temp Probe	化霜探头		1	
16	W0302304	Room Temp Probe	感温探头		1	
15	80021201	Drain Pan Cover	蒸发后盖板	SUS430	1	
14	W0803012	Drain Pan Foam	接水盘泡沫	EPS	1	
13	W0409858	Drain Hose Connector	排水管连接器A	PA66	1	
12	W0310078	Drain Pan Heater	接水盘加热带		1	
11	80022003	Drain Pan	铝制接水盘	AL	1	
10	W0409859	Drain Hose Connector	排水管连接器B	PA66	1	
9	W0310068	Drain Hose Heater	排水管加热带		1	
8	80021206	Evap Right Cover	蒸发右挡板	SUS430	1	
7	W0399080	Defrost Heater Fuse	化霜感温包(突跳式开关)		1	
6	80021204	Right Air Lane Cover	蒸发空气右挡板	SUS430	1	
5	80021205	Middle Air Lane Cover	蒸发空气中挡板	SUS430	1	
4	80021203	Left Air Lane Cover	蒸发空气左挡板	SUS430	1	
3	80021206	Evap Left Cover	蒸发左挡板	SUS430	1	
2	W0202111	Evaporator	蒸发器	AL TP2-M	1	
1	W0311039	Defrost Heater	化霜加热管		1	
料号	Material code	English Name	Chinese Name	MATERIAL	数量	Remark

80020414

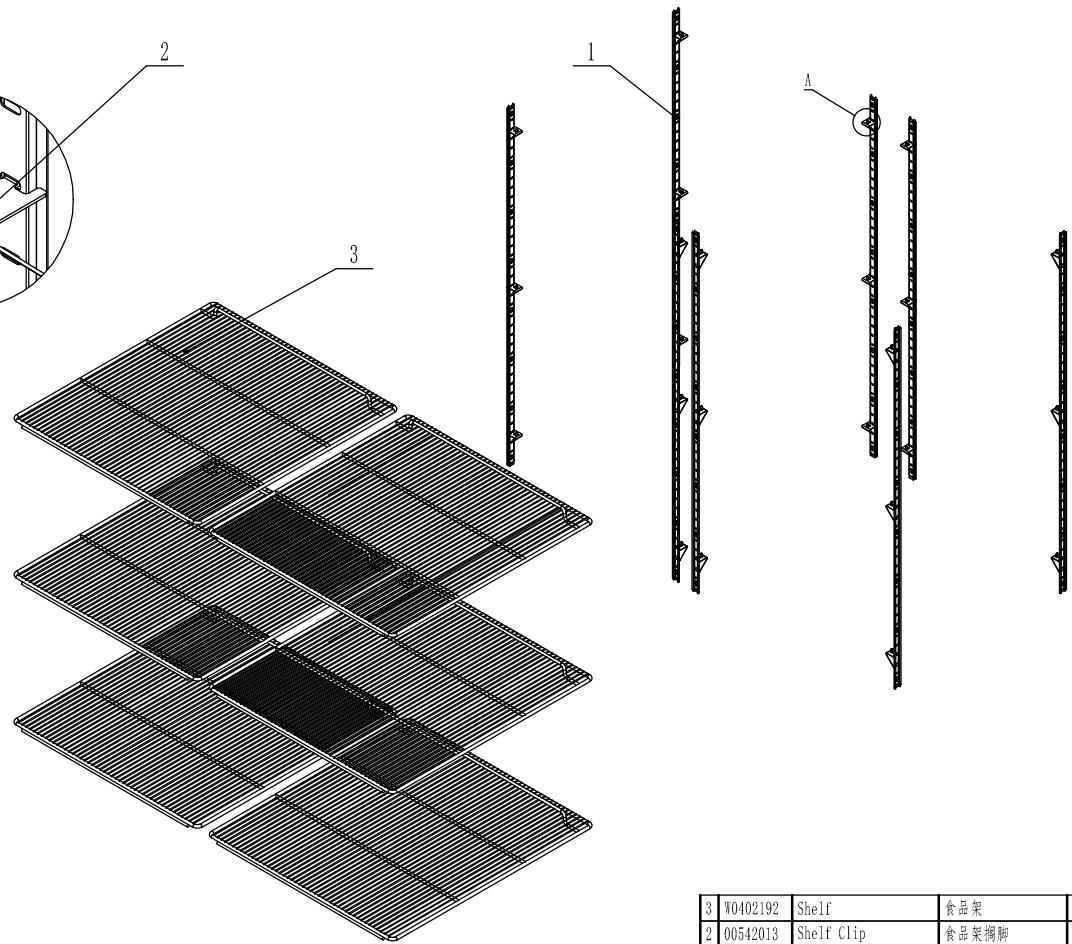


14	W0413052	Rubber Fixing Block	散热管固定垫	RUBBER(橡胶)	2	
13	W0210060	High Presure Coil	散热管	TP2-M	1	
12	W0210321	Connecting Coil to Condenser	连接管(散热管-冷凝器)	TP2-M	1	
11	W0204003	Dry Filter	干燥过滤器		1	
10	W0499222	Condenser Dust Filter	冷凝器防尘罩		1	
9	W0203027	Condenser	冷凝器	G1 TP2-M	1	
8	W0210043	Low Presure Coil Back to Compressor	回气管(A)	TP2-M	1	
7	W0201827	Compressor	压缩机		1	
6	W0210217	Connecting Coil from Compressor	连接管(压缩机与散热管)	TP2-M	1	
5	W0301056	Condenser Fan Blade	冷凝风叶	AL/φ250	1	
4	80031601	Condenser Fan Bracket	冷凝风机支架	G1	1	
3	W0301905	Condenser Fan Motor	冷凝风机		1	
2	W0409849	Back High Presure Coil Cover	后背蒸发器包	PP	1	
1	W0409851	Back High Presure Coil Cover	蒸发器护罩	PP	2	
材料	Material code	English Name	Chinese Name	MATERIAL	数量	Remark

80020415



局部放大图A



3	W0402192	Shelf	食品架		6	
2	00542013	Shelf Clip	食品架搁脚	SUS430	24	
1	80037410	Pilaster For Shelf	食品架隔条	SUS430	8	
料号	Material code	English Name	Chinese Name	MATERIAL	数量	Remark

