

# Single Revolving Oven

MODEL SR, SR-2, SRW, SRC, KS & LMWS  
OPERATION AND MAINTENANCE



# Warranty Information

## LIMITED ONE YEAR WARRANTY

**BKI** (The "Company") warrants to the original purchaser/user, that at time of shipment from the Company factory, this equipment will be free from defect in materials and workmanship. Written notice of a claim under this Warranty must be given within **ONE YEAR AND THREE MONTHS** from date of shipment from the factory. Defective conditions caused by abnormal use or misuse, lack of maintenance, damage by third parties, alterations by unauthorized personnel, acts of God, failure to follow installation instructions or any other events beyond the control of the company will **NOT** be covered under Warranty. The obligation of the Company under this Warranty shall be limited to repairing or replacing (at the option of the company) any part which is defective in reasonable opinion of the Company. The user will have the responsibility and expense of removing and returning the defective part to the Company as well as the cost of reinstalling the replacement or repaired part.

**IN NO EVENT SHALL THE COMPANY BE LIABLE FOR LOSS OF USE, LOSS OF REVENUE OR LOSS OF PRODUCT OR PROFIT OR FOR INDIRECT OR CONSEQUENTIAL DAMAGES INCLUDING BUT NOT LIMITED TO, FOOD SPOILAGE OR PRODUCT LOSS. WARRANTY DOES NOT COVER GLASS BREAKAGE. THE ABOVE WARRANTY IS EXCLUSIVE AND ALL OTHER WARRANTIES, EXPRESS OR IMPLIED, ARE EXCLUDED INCLUDING THE IMPLIED WARRANTIES OF MERCHANTABILITY AND FITNESS FOR A PARTICULAR PURPOSE. THIS WARRANTY SHALL APPLY ONLY WITHIN THE CONTINENTAL UNITED STATES, ITS TERRITORIES, AND POSSESSIONS AND IN CANADA.**

## LIMITED NINETY DAY LABOR WARRANTY

All labor necessary to repair or replace factory defective parts will be performed, without charge, to the end user, by service personnel of a **BKI** Authorized Distributor during the first ninety days after the date of installation of the new equipment.

**Replacement parts:** Any appliance replacement part, except lamps and fuses, which proves to be defective in material or workmanship within 90 days from date of original installation will be repaired or replaced without charge F.O.B. Factory, Simpsonville, S.C. or F.O.B. authorized distributor.

## Table of Contents

<b>Table of Contents .....</b>	<b>1</b>
<b>Introduction.....</b>	<b>2</b>
Safety Precautions .....	2
Safety Signs and Messages .....	2
Safe Work Practices .....	3
Health And Sanitation Practices.....	5
Food Handling.....	5
Storage Of Raw Meats.....	5
Coding Cooked Foods .....	5
Storage Of Prepared Foods.....	5
<b>Operation.....</b>	<b>6</b>
Controls and Indicators .....	6
Cooking Recommendations .....	7
Basic Rules .....	7
Supplies Needed.....	8
Instructions for Chicken .....	8
Instructions for Chicken Parts.....	8
Instructions for Rock Cornish Hens .....	9
Instructions for Spare Ribs.....	9
Instructions for Danish Baby Back Ribs.....	9
Instructions for Roast Beef.....	9
Instructions for Turkeys.....	10
Instructions for Baked Potatoes .....	10
<b>Installation.....</b>	<b>11</b>
Unpacking and Handling .....	11
Location and Clearance .....	11
Wiring .....	11
<b>Maintenance .....</b>	<b>12</b>
Scheduled Maintenance.....	12
Oven Cleaning .....	12
Troubleshooting.....	13
<b>Replacement Parts .....</b>	<b>14</b>
SR Parts List .....	14
SR-2 Parts List .....	16
SRC Parts List.....	18
SRW Parts List.....	22
KS Parts List.....	25
LMWS Parts List.....	28
Accessories .....	30
<b>Wiring Diagrams .....</b>	<b>31</b>

## Introduction

The units covered in this manual are single revolving rotisserie ovens containing tubular heating elements, manual electronic controls, quartz tube lamps and doors with tempered glass.

The **BKI** name and trademark on this unit assures you of the finest in design and engineering -- that it has been built with care and dedication -- using the best materials available. Attention to the operating instructions regarding proper installation, operation, and maintenance will result in long lasting dependability to ensure the highest profitable return on your investment.

### NOTICE

PLEASE READ THIS ENTIRE MANUAL BEFORE OPERATING THE UNIT. If you have any questions, please contact your **BKI** Distributor. If they are unable to answer your questions, contact the **BKI** Technical Service Department, toll free: 1-800-927-6887. Outside the U.S., call 1-864-963-3471.

### Safety Precautions

Always follow recommended safety precautions listed in this manual. Below is the safety alert symbol. When you see this symbol on your equipment, be alert to the potential for personal injury or property damage.



### Safety Signs and Messages

The following Safety signs and messages are placed in this manual to provide instructions and identify specific areas where potential hazards exist and special precautions should be taken. Know and understand the meaning of these instructions, signs, and messages. Damage to the equipment, death or serious injury to you or other persons may result if these messages are not followed.

#### DANGER

This message indicates an imminently hazardous situation which, if not avoided, will result in death or serious injury.

#### WARNING

This message indicates a potentially hazardous situation, which, if not avoided, could result in death or serious injury.

#### CAUTION

This message indicates a potentially hazardous situation, which, if not avoided, may result in minor or moderate injury. It may also be used to alert against unsafe practices.

#### NOTICE

This message is used when special information, instructions or identification are required relating to procedures, equipment, tools, capacities and other special data.

## Safe Work Practices



### Wear Safe Clothing Appropriate To Your Job

Always wear your insulated mitts when handling hot racks or touch any hot metal surface. If you lose or damage your mitts, you can buy new ones at your local restaurant equipment supply store or from your local **BKI** Distributor.

Always wear non-skid shoes when working around the oven or any other equipment.

Never wear loose clothing such as neckties or scarves while operating this equipment. Keep loose hair tied back or in a hair net while operating this equipment.

Always wear appropriate personal protection equipment during the cleaning process to guard against possible injury from hot cleaning solution.



### Beware of High Voltage

This equipment uses high voltage. Serious injury can occur if you or any untrained or unauthorized person installs, services, or repairs this equipment. Always Use an Authorized Service agent to Service Your Equipment.



### Keep this manual with the Equipment

This manual is an important part of your equipment. Always keep it near for easy access. If you need to replace this manual, contact:

#### **BKI**

Technical Services Department  
P.O. Box 80400  
Simpsonville, S.C. 29680-0400  
Or call toll free: 1-800-927-6887  
Outside the U.S., call 864-963-3471



### Protect Children

Keep children away from this equipment. Children may not understand that this equipment is dangerous for them and others.

NEVER allow children to play near or operate your equipment.

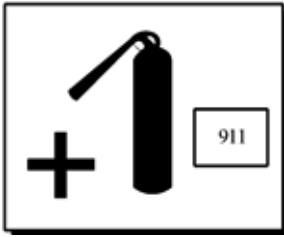


### Keep Safety Labels Clean and in Good Condition

Do not remove or cover any safety labels on your equipment. Keep all safety labels clean and in good condition. Replace any damaged or missing safety labels. If you need a new safety label contact:

#### **BKI**

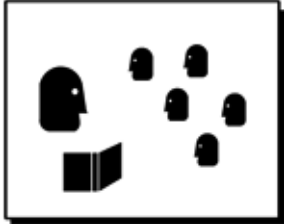
Technical Services Department  
P.O. Box 80400  
Simpsonville, S.C. 29680-0400  
Or call toll free: 1-800-927-6887  
Outside the U.S., call 864-963-3471

**Be Prepared for Emergencies**

Be prepared for fires, injuries, or other emergencies.

Keep a first aid kit and a fire extinguisher near the equipment. You must use a 40-pound Type BC fire extinguisher and keep it within 25 feet of your equipment.

Keep emergency numbers for doctors, ambulance services, hospitals, and the fire department near your telephone.

**Know your responsibilities as an Employer**

- Make certain your employees know how to operate the equipment.
- Make certain your employees are aware of the safety precautions on the equipment and in this manual.
- Make certain that you have thoroughly trained your employees about operating the equipment safely.
- Make certain the equipment is in proper working condition. If you make unauthorized modifications to the equipment, you will reduce the function and safety of the equipment.

## Health And Sanitation Practices

**BKI** Rotisserie Ovens are manufactured to comply with health regulations and are tested and certified to NSF standards. You must operate the equipment properly, using only quality products and use meat thermometers to insure meats are thoroughly cooked.

### Food Handling

- Wash hands thoroughly in warm, soapy water after handling raw poultry or meats.
- Clean and sanitize all utensils and surfaces that have been in contact with raw products. Clean and sanitize the meat forks or baskets between cooking.
- **Never** place cooked meats on the same surfaces used to prepare raw meats, unless the area has been thoroughly cleaned and sanitized.

### Storage Of Raw Meats

- Designate an area or shelf strictly for the storage of all raw meats to be used in the rotisserie.
- Raw product must always be stored at temperatures below 38° F. (3° C.).
- **Never** store or mix raw foods above cooked foods, as this is a health hazard. The drippings from raw foods contaminate cooked or processed foods.
- All chicken and chicken parts to be stored overnight must be thoroughly iced down and refrigerated.

### Coding Cooked Foods

All products cooked during the day should be sold the same day.

**NOTE:** It is not the intent of the rotisserie program to have unsold merchandise at the end of the cooking day. Follow your company's procedures for the handling of any leftover product.

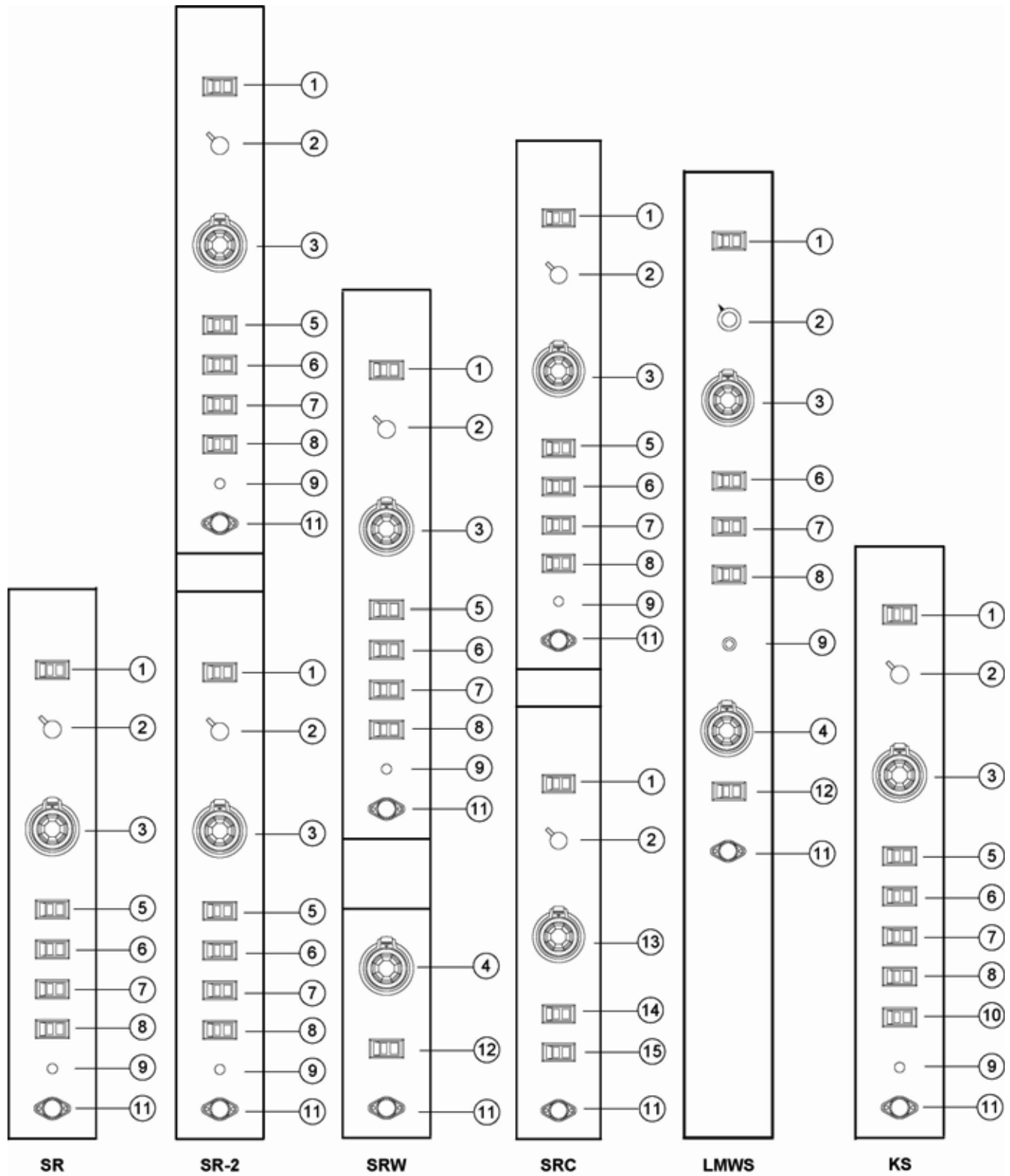
### Storage Of Prepared Foods

- Cold foods should be kept at or below 38° F. (3° C.).
- Hot foods must be maintained to meet local health codes, usually a minimum 145° F. (63° C.).

# Operation

## Controls and Indicators

Refer to the figure and table below for an explanation of controls and indicators for a specific oven model.





Item #	Description	Function
1	<b>Timer Switch</b>	This switch starts the timer. When the timer reaches 0, a buzzer will sound. Turn the timer switch off to stop the buzzer.
2	<b>Timer</b>	Turn the timer knob clockwise to the desired cooking time. When the timer counts down to 0, a buzzer will sound to call attention to the rotisserie. Turn the timer switch off to stop the buzzer. <i>NOTE: The timer does not turn off the heating elements.</i>
3	<b>Oven Thermostat</b>	Turn the thermostat knob clockwise to the desired cooking temperature. It has a maximum range of 450° F.
4	<b>Warmer Thermostat</b>	(Model SRW & LMWS only) – Turn the thermostat knob clockwise to the desired setting to maintain the cooked product at the temperature required by the state and local codes.
5	<b>1000 Watt Quartz Tube Switch</b>	When this switch is on, the quartz tube on the operator side of the rotisserie will cycle on and off with the thermostat.
6	<b>Rotor Switch</b>	This switch allows you to stop the rotors at any position for loading and unloading the product.
7	<b>500 Watt Quartz Tube Switch</b>	This switch allows you to turn the quartz tube on the customer side of the rotisserie on and off for lighting the display area.
8	<b>Hickory Smoke Switch</b>	Turn this switch on to heat the hickory smoke element using hickory chips to smoke the meat in the rotisserie.
9	<b>Minibreaker</b>	This is a 3-amp minibreaker that acts as an overcurrent protector for the rotisserie drive motor.
10	<b>Grease Smoke Switch</b>	(Model KS only) - Turn this switch on to add additional smoke to the product.
11	<b>Fuse</b>	A fuse is provided for overcurrent protection on the electronic circuitry. Push in and twist the cap to remove the fuse.
12	<b>Warmer Light Switch</b>	(Model SRW & LMWS only) - This switch provides lighting for the warmer oven section of the unit.
13	<b>Convection Oven Thermostat</b>	(Model SRC only) – Turn the thermostat knob clockwise to the desired cooking temperature. It has a maximum range of 450° F.
14	<b>Oven Light Switch</b>	(Model SRC only) – This switch turns on four 40-watt bulbs in the convection oven section of the Model SRC.
15	<b>Blower Switch</b>	(Model SRC only) – This switch turns on a fan to provide even baking in the convection oven section of the model SRC. A limit switch also turns off the fan when the doors are opened.

## Cooking Recommendations



Before using your revolving oven for the first time, become familiar with the safety features and warnings that are on the machine.

### Basic Rules

1. Never let the warmer temperature go below 150° F.
2. All poultry must be cooked to a minimum internal temperature of 175° F.
3. Cycle cook your foods so that the rotisserie is continuously working and selling for you.
4. Never let the rotisserie oven temperature drop below 325° F.
5. Do not cook above 375° F.
6. Do not cook different types of meat at the same time, (i.e., poultry/beef/pork)

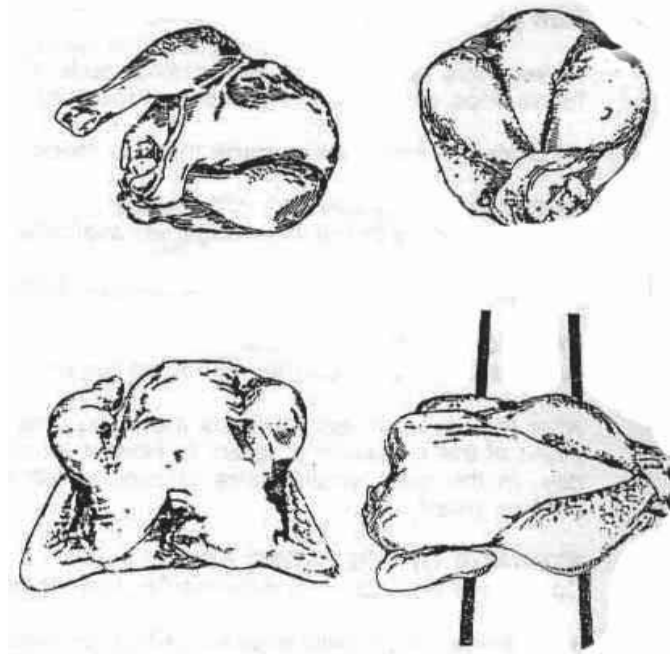
## Supplies Needed

1	<b>Meat Thermometer</b>	For testing the internal temperature of a product.
2	<b>Oven Mitts</b>	For handling hot items
3	<b>Large Pan</b>	For barbeque sauce. Immediately after cooking product, dip it in barbeque sauce for a delicious flavor.

## Instructions for Chicken

1. Preheat the oven to 325°F. Preheat the warmer to 150°F.
2. Prepare whole birds for cooking:

- a. Cut off excess skin along the neck.
- b. Remove excess fat around the cavity opening.
- c. Cut slit into tail skin.
- d. Push down and break the breast bone.
- e. Tuck the end of the legs into slit made in tail skin.
- f. Fold back the wings and lock under the back.
- g. Secure chickens on cooking forks or in baskets. For cooking forks, thread spits between leg joints and wing joints. Display in oven with legs out and breast down.



3. Sprinkle Seasoning over outside of chicken and into cavity. Rub seasoning thoroughly over entire chicken.
4. Roast chickens approximately 1.25 to 1.5 hours at 325°F. Check internal temperature of chicken with meat thermometer before removing from oven. If internal temperature is not at least 175°F, continue to cook until this internal temperature is reached.
5. Cycle cook your foods. The rotisserie must be in use at all times for best merchandising results. Each cooking fork can hold up to five chickens.

### **CAUTION**

Never mix raw chicken and cooked chicken together. Never place cooked chicken in pans where raw chicken has been unless the pans have been thoroughly washed and sanitized. Always wash and sanitize pans before reusing.

## Instructions for Chicken Parts

1. Chicken parts are to be cooked in rotisserie baskets.
2. Sprinkle Seasoning over chicken pieces and rub seasoning thoroughly over chicken pieces.

**OPTION:** Chicken parts can be marinated overnight. Place in a covered container and refrigerate.

3. Cook at 325°F for approximately 45 minutes. Check internal temperature of chicken with meat thermometer before removing from oven. If internal temperature is not at least 175°F, continue to cook until this internal temperature is reached.
4. Dip chicken pieces in barbecue sauce after cooking.

### **Instructions for Rock Cornish Hens**

1. Rock Cornish hens will arrive at your store frozen. Thaw out only amount of hens you wish to cook that day.
2. Prepare hens in the same manner as the instructions for chickens. Cook in baskets.
3. Cook at 325°F for approximately 1.25 to 1.5 hours. Check internal temperature of hens with meat thermometer before removing from oven. If internal temperature is not at least 175° F, continue to cook until this internal temperature is reached.

### **Instructions for Spare Ribs**

1. Marinate ribs overnight if desired. (Marinating is optional).
2. Rub Seasoning on ribs.
3. Lace ribs on cooking forks.
4. Cook at 325°F for approximately 1.25 to 1.5 hours. Check internal temperature of ribs with meat thermometer before removing from oven. If internal temperature is not at least 175°F, continue to cook until this internal temperature is reached.
5. Dip ribs in barbecue sauce after cooking.

### **Instructions for Danish Baby Back Ribs**

1. Marinate ribs overnight if desired. (Marinating is optional).
2. Rub Seasoning on ribs.
3. Danish Baby Back Ribs must be cooked in rotisserie baskets.
4. Cook at 325°F for approximately 1.25 to 1.5 hours. Check internal temperature of ribs with meat thermometer before removing from oven. If internal temperature is not at least 175°F, continue to cook until this internal temperature is reached.
5. Dip ribs in barbecue sauce after cooking.

### **Instructions for Roast Beef**

1. The roast beef will be cut and ready for cooking.
2. Open packaging. Lift roast beef out of natural juices and pat dry.
3. Tie roast beef to ensure original shape while cooking.
4. Cook at 325°F. Set cooking time for 20 minutes per pound. Check internal temperature of meat with meat thermometer for doneness. The desired temperature for “medium” roast beef is 150°F. (Check local health code guidelines for proper temperature.)

### **Instructions for Turkeys**

1. Rub Seasoning on turkeys.
2. Use meat forks inserted into rotor fork holes nearest center shaft to allow room for large turkeys.
3. Cook at 325°F. Set cooking time for 15 minutes per pound. Check internal temperature of meat with meat thermometer before removing from oven. If internal temperature is not at least 175°F, continue to cook until this internal temperature is reached.

### **Instructions for Baked Potatoes**

1. Use large Idaho baking potatoes.
2. Wash potatoes thoroughly and wrap in foil.
3. Place wrapped potatoes in rotisserie basket.
4. Cook at 325°F for 45 minutes to an hour.
5. Cover rotisserie basket with foil to prevent grease from meats dripping onto potatoes.

---

## Installation

**⚠ WARNING**

Serious injury, equipment damage or death could result if attempting to install this oven yourself. Ensure that an authorized BKI service agent installs the oven.

### ***Unpacking and Handling***

It is the owners' responsibility to file all freight claims with the delivering truck line. Inspect all cartons and crates for damage as soon as they arrive. If damage to cartons or crates is found, or if a shortage is found, note this on the bill of lading (all copies) prior to signing.

If damage is found when the equipment is opened, immediately call the delivering truck line and follow up the call with a written report indicating concealed damage to your shipment. Ask for an immediate inspection of your concealed damage item. Packaging material **MUST** be retained to show the inspector from the truck line.

Remove all packing from the interior and exterior of the oven.

### ***Location and Clearance***

Underwriters Laboratories requires that the oven have at least 16" clearance between the rear of the unit and any combustible surfaces.

### ***Wiring***

**⚠ WARNING**

Electrocution, equipment failure or property damage could result if an unlicensed electrician performs the electrical installation. Ensure that a licensed electrician perform the electrical installation.

The oven, when installed by an authorized **BKI** service agent, must be wired in accordance with local codes, or in the absence of local codes, with the National Electrical Code, ANSI/NFPA 70-2002.

## Maintenance

**⚠ CAUTION**

Failure to comply with the maintenance below could result in a serious accident or equipment damage.

**⚠ DANGER**

Failure to remove power from this unit before performing maintenance may cause severe electrical shock. This unit may have more than one disconnect switch.

### *Scheduled Maintenance*

#### Oven Cleaning

The oven must be cleaned at the end of each business day. Cleaning is not only necessary for sanitary reasons, but will increase sales appeal and maximize operating efficiency.

**⚠ DANGER**

Failure to remove power from this unit may cause severe electrical shock. This unit may have more than one disconnect switch.

**⚠ CAUTION**

Using abrasive cleaners may damage the cabinet finish. Use only a mild soap and water solution.

DO NOT USE OVEN CLEANER on this machine. Caustic cleaners can cause damage to the machine.

Never steam clean or get excess water in the interior of the cabinet as this can damage unit.

Always wear appropriate personal protection equipment during the cleaning process to guard against possible injury from hot cleaning solution.

1. Turn off all switches and controls.
2. Let the oven cool to room temperature.
3. Pull grease drawer out of oven and empty it's contents.
4. Clean grease drawer and tray area with hot soapy water.
5. Remove all food products from the unit. Remove all racks, trays, spits and frames from the unit and place them in a large sink to soak in hot cleaning solution (**BKI** Cleaner).
6. Clean the outside and inside of the rotisserie oven with warm water, a sponge and an approved cleaner which is authorized for use on food surface areas.
7. Clean racks, trays, spits and frames with warm water, a sponge and BK Cleaner. Wipe dry with a clean cloth.
8. Reassemble the oven.

## Troubleshooting

Problem	Cause	Possible Solution
Unit will not turn on.	Power to unit is not on. Problem with building power panel, circuit breaker or fuse.	Check circuit breaker or fuses at building power panel. If problem persists, contact an authorized electrician for corrective action.
	Power cord may not be plugged into outlet.	Plug cord into outlet.
	Blown fuse.	Contact an authorized <b>BKI</b> service agent for corrective action.
Not rotating.	Motor circuit breaker tripped.	Press the reset button. If problem persists, contact an authorized <b>BKI</b> service agent for corrective action.
	ROTOR switch may not be activated.	Make sure the ROTOR switch is on.
	V-belt is loose or broken.	Contact an authorized <b>BKI</b> service agent for corrective action.
Rotor switch not functioning.	Defective switch.	Contact an authorized <b>BKI</b> service agent for corrective action.
Oven does not heat at all.	Improper program settings.	Check program settings.
	Heating elements not functioning.	Contact an authorized <b>BKI</b> service agent for corrective action.
	Bad relay.	Contact an authorized <b>BKI</b> service agent for corrective action.
Oven heats up slowly.	Doors may not be closed.	Close the doors.
	Improper line voltage.	Check incoming voltage. If problem persists, contact an authorized <b>BKI</b> service agent for corrective action.
	Heating elements not functioning.	Contact an authorized <b>BKI</b> service agent for corrective action.

## Replacement Parts

Use the information in this section to identify replacement parts. To order replacement parts, call your local **BKI** sales and service representative. Before calling, please note the serial number on the rating tag affixed to the unit.

### SR Parts List

SR Part #	SR Part Description
SB0061	5 TRAY FREE SWINGING ROTOR
SB0004	BASE ASSY, SR
SRA058	BEARING BLOCK 5/8 SHAFT
SR2A056	BRACE, MOTOR COVER SR2
F0158	BUSHING, BLK 1/2 HEYCO SNAP
F0155	BUSHING, BLK 7/8 HEYCO SNAP
SB0086A	CAB ASSY SR S/S NO CAM
SB0087A	CAB ASSY SR S/S SOL BACK NO CAM
F0064	CABLE TIES, 7 1/2" NO EYELET
F0096	CABLE TIES, 7 1/2" W/EYELET
B0452B	CALROD BRACKET ASSY, SR
C0001	CALROD, 208V 2500W OFFSET
C0004	CALROD, 208V 2500W STRAIGHT
C0002	CALROD, 240V 2500W OFFSET
F0063	CLAMP, SAFETY 16101-S 1/4 DIA
FT0031	COLLAR, 5/8 SET LSC-10
SRA059	CORNER POST, SR
AN10100100	CTL PNL SR 120/208/60/3 N0 H/S
N0202	DECAL, DANGER HIGH VOLTAGE
N0166	DECAL, DO NOT USE HARSH CLEANERS
N0409	DECAL, LOGO LARGE DIE CAST
N0022	DECAL, NSF
N0363	DECAL, REMOVABLE ROTORS
SB0049	DOOR ASSY, LH SR
SB0005	DOOR ASSY, RH SR
SB0218	DROP DOWN PNL ASSY S/S SR
SB0085	DROP DOWN PNL LESS CATCH S/S
KSA071	GASKET, GREASE SMOKER
SB0222	GREASE DRAWER ASSY, S/S SR'S
G0022	GUARD, GRILL 6 BAR (BOTTOM)
HCA014	GUARD, LAMPHOLDER PLATE SR KS LMWS
SRA053	HINGE BLOCK, KS, SP, DP
H0081	HUB, SR KNOCK OFF SPIDER TYPE
SRWA073	INSIDE H/S COVER PLATE
SRA089	INSPECTION PLATE CONTROL PANEL
G0052	INSULATED MITT 13"
I0011	INSULATION, KAOWOOL STRIP
I0002	INSULATION, PEERLESS FIBER 3"
I0010	INSULATION, RANGE 1" FIBERGLASS



SR Part #	SR Part Description
I0005	INSULATION,1"TK
SRA056	LATCH BLOCK, KS
SRA033	MOTOR COVER SR
SRA108	MOTOR COVER SPACER, SR SERIES
N0023	NAME & RATING TAG, UL
NUT052	NUT, 10-24 ALUM CAP
NUT050	NUT, 10-24 FLEX LOCK
NUT076	NUT, 10-24 PALNUTS
NUT086	NUT, 5/16-18 ALUM CAP
NUT055	NUT, 5/16-18 FINISHED HEX
NUT081	NUT, SPEED C-83410-A-67
NUT082	NUT, SPEED PS-438014-S
F0049	NUT, TRUSEAL BRASS 1/2-14 NPT
SRWA072	OUTSIDE H/S COVER PLATE
SRA076	OUTSIDE TOP,
SRA046	PANEL, SIDE INSL SR
SRWA124	PANEL, TOP INSULATION
SRA052	PLATE, OUTSIDE CALROD KS SR SERIES
FT0015	PLUG, HOLE 1/2"
HT0016	QUARTZ TUBE, 115-125V QH500T3
HT0002	QUARTZ TUBE, 200-220V QH1000T3
HT0003	QUARTZ TUBE, 230-250V QH1000T3
RIV170	RIVET, 1/8 ALUM (.063-.125)
RIV171	RIVET, 1/8 ALUM (.187-.250)
F0077	ROLL PIN, 5/32 X 1 1/8
SB0011B	ROTOR ASSY 6 TRAY LHW/SPRINGS
AN10513900	ROTOR ASSY MSR
AN10504800	ROTOR ASSY, W/O SPRINGS
SCR017	SCREW, 10 X 1 SLTD HEX WASHER
SCR008	SCREW, 10 X 1/2 PHIL TRUSS
SCR135	SCREW, 10 X 1/2 PHIL TRUSS
SCR015	SCREW, 10 X 1/2 SLTD HEX
SCR027	SCREW, 10-24 X 1 SOC FLT
SCR369	SCREW, 10-24 X 3/4 PHIL RD
SCR075	SCREW, 10-24 X 3/8 SHOULDER
SCR137	SCREW, 10-24 X 5/8 SLTD TRUSS
SCR114	SCREW, 4 X 3/8 SLTD OVAL BLK
SCR063	SCREW, 5/16-18 X 1 1/2 HEX CAP
SCR062	SCREW, 5/16-18 X 1 HEX CAP
SCR236	SCREW, 5/16-18 X 1 WHIZ'LOC
SCR061	SCREW, 5/16-18 X 1/2 HEX CAP
SCR065	SCREW, 5/16-18 X 2 HEX CAP
SCR356	SCREW, 5/16-18 X 5/16 SOC SET
SCR005	SCREW, 8 X 1/2 PHIL TRUSS
SCR007	SCREW, 8 X 3/4 PHIL TRUSS HD

SR Part #	SR Part Description
SCR004	SCREW, 8 X 3/8 PHIL TRUSS
SCR448	SCREW, STUD 10-24 X 1-1/4 WELD
WN10504600	SHAFT/PULLEY WELD MSR SR SR2 SRW
SB0007	SIDE STIFFENER ASSY SR
SB0219	SOLID PANEL, S/S SR
SP0007	SPACER, ALUM 11/16"
H0082	SPINNER, SR KNOCK OFF HUB
SB0008	TERM BLOCK ASSY, 4 TB0001
SB0008A	TERM BRKT ASSY 1 OR 3P
F0081	THREAD INSERT 3/8-16 STEEL
SB0111	TOP OUTSIDE FRAME WELD ASSY KS
SRWA026	TOP STIFFNER SRW
VB0005	V-BELT, 4L-740
WSH090	WASHER, #10 LOCK ZINC PLATED
WSH101	WASHER, 5/16 INT LOCK
WSH045	WASHER, 5/16 LOCK ZINC PLTD
WSH039	WASHER, 5/16 SAE FLAT
WSH252	WASHER, TEFLON SR SERIES
SRA054	WIRE TRACK, KS SR

**SR-2 Parts List**

SR-2 Part #	SR-2 Part Description
SB0133	BASE ASSY 115V SR2 4" CASTERS
SB0121	BASE ASSY 240V SR2 CASTERS
SR2A056	BRACE, MOTOR COVER SR2
SR2A036	BRACKET, DRAIN PIPE SR2
SR2A051	BUMPER, KS
F0154	BUSHING, BLK 1-3/16 HEYCO SNAP
F0158	BUSHING, BLK 1/2 HEYCO SNAP
F0155	BUSHING, BLK 7/8 HEYCO SNAP
SB0136	CAB ASSY SOL BACK SR2 2 1000W S/S
SB0124A	CAB ASSY SR2 S/S NO CAM
SB0131A	CAB ASSY SR2 SOL BACK S/S NO CAM
SB0132A	CAB ASSY STR 208 OR 240 SR2 NO CAM
B0452B	CALROD BRACKET ASSY, SR
C0001	CALROD, 208V 2500W OFFSET
C0002	CALROD, 240V 2500W OFFSET
F0063	CLAMP, SAFETY 16101-S 1/4 DIA
FT0031	COLLAR, 5/8 SET LSC-10
SR2A012	CORNER POST PLAIN SR2
SR2A074	CORNER POST, LEFT SIDE
AN11100100	CTL PNL SR2 120/208-240/1-3 NO H/S
AN11100400	CTL PNL SR2 120/240/50/1 NO H/S
AN11100200	CTL PNL SR2 208-240 NO H/S
AN11100300	CTL PNL SR2 220/380/50/3 NO H/S

SR-2 Part #	SR-2 Part Description
N0202	DECAL, DANGER HIGH VOLTAGE
N0166	DECAL, DO NOT USE HARSH CLEANERS
N0409	DECAL, LOGO LARGE DIE CAST
N0022	DECAL, NSF
N0363	DECAL, REMOVABLE ROTORS
SB0049	DOOR ASSY, LH SR
SB0005	DOOR ASSY, RH SR
SB0218	DROP DOWN PNL ASSY S/S SR
SB0085	DROP DOWN PNL LESS CATCH S/S
KSA071	GASKET, GREASE SMOKER
SB0107	GREASE DRAWER ASSY, BTM SR2
SB0123	GREASE DRWR SLIDE WELD SR2 SRC
G0022	GUARD, GRILL 6 BAR (BOTTOM)
G0023	GUARD, GRILL 9 BAR (TOP)
HCA014	GUARD, LAMPHOLDER PLATE SR KS LMWS
SRA053	HINGE BLOCK, KS, SP, DP
H0081	HUB, SR KNOCK OFF SPIDER TYPE
SRWA073	INSIDE H/S COVER PLATE
SRA089	INSPECTION PLATE CONTROL PANEL
G0052	INSULATED MITT 13"
I0011	INSULATION, KAOWOOL STRIP
I0002	INSULATION, PEERLESS FIBER 3"
I0010	INSULATION, RANGE 1" FIBERGLASS
I0005	INSULATION, 1"TK
SRA056	LATCH BLOCK, KS
SR2A035	MOTOR COVER SR2
SRA108	MOTOR COVER SPACER, SR SERIES
N0023	NAME & RATING TAG, UL
NUT052	NUT, 10-24 ALUM CAP
NUT050	NUT, 10-24 FLEX LOCK
NUT076	NUT, 10-24 PALNUTS
NUT086	NUT, 5/16-18 ALUM CAP
NUT081	NUT, SPEED C-83410-A-67
NUT082	NUT, SPEED PS-438014-S
SRWA072	OUTSIDE H/S COVER PLATE
SRA046	PANEL, SIDE INSL SR
SRWA124	PANEL, TOP INSULATION
SRA052	PLATE, OUTSIDE CALROD KS SR SERIES
HT0016	QUARTZ TUBE, 115-125V QH500T3
HT0002	QUARTZ TUBE, 200-220V QH1000T3
HT0003	QUARTZ TUBE, 230-250V QH1000T3
RIV172	RIVET, 1/8 CS ZINC (.187-.250)
RIV173	RIVET, 1/8 SS (.187-.250)
F0024	RIVNUT, #10-24
F0077	ROLL PIN, 5/32 X 1 1/8

SR-2 Part #	SR-2 Part Description
SB0011B	ROTOR ASSY 6 TRAY LHW/SPRINGS
AN10513900	ROTOR ASSY MSR
AN10504800	ROTOR ASSY, W/O SPRINGS
SCR364	SCREW, 1/4-20 X 1/4 SOC SET
SCR017	SCREW, 10 X 1 SLTD HEX WASHER
SCR138	SCREW, 10 X 1/2 PHIL TR H
SCR016	SCREW, 10 X 1/2 SLTD HEX SER WSH
SCR032	SCREW, 10-24 X 1 PHIL RD
SCR027	SCREW, 10-24 X 1 SOC FLT
SCR287	SCREW, 10-24 X 3/4 FLAT PHIL
SCR369	SCREW, 10-24 X 3/4 PHIL RD
SCR137	SCREW, 10-24 X 5/8 SLTD TRUSS
SCR236	SCREW, 5/16-18 X 1 WHIZ'LOC
SCR356	SCREW, 5/16-18 X 5/16 SOC SET
SCR228	SCREW, 6-32 X 1/4 SLTD RD
SCR176	SCREW, 8-32 X 3/8 SLTD BINDING
SCR448	SCREW, STUD 10-24 X 1-1/4 WELD
SCR078	SCREW, STUD 10-24 X 3/4 WELD
SCR067	SCREW, 5/16-18 X 2 1/2 SLTD TRUSS
WN10504600	SHAFT/PULLEY WELD MSR SR SR2 SRW
SR2A044	SIDE DRAIN PIPE, 4 1/2"
SB0126	SIDE GREASE DRAWER ASSY, SR'S
SB0103	SIDE STIFFENER ASSY SR2
KSA096	SKIRT, BOTTOM
SB0219	SOLID PANEL, S/S SR
SP0007	SPACER, ALUM 11/16"
H0082	SPINNER, SR KNOCK OFF HUB
SRA091	STAND OFF STRIP
SB0008	TERM BLOCK ASSY, 4 TB0001
SB0008A	TERM BRKT ASSY 1 OR 3P
F0081	THREAD INSERT 3/8-16 STEEL
SB0111	TOP OUTSIDE FRAME WELD ASSY KS
SRWA026	TOP STIFFNER SRW
SB0112	TOP, OUTSIDE W/STAND OFF ROD
TF0035	TRANSFORMER, 230V 50/60HZ TO
VB0005	V-BELT, 4L-740
VB0006	V-BELT, A-135D
WSH090	WASHER, #10 LOCK ZINC PLATED
WSH252	WASHER, TEFLON SR SERIES
SRA054	WIRE TRACK, KS SR

**SRC Parts List**

SRC Part #	SRC Part Description
SB0323	BASE ASSY 240V SRC CASTERS
SB0337	BASE ASSY SRC 4" CASTERS

SRC Part #	SRC Part Description
AN30102600	BASE ASSY.CASTER CO
SB0306	BLOWER MTG ASSY, SRC
SR2A056	BRACE, MOTOR COVER SR2
SR2A036	BRACKET, DRAIN PIPE SR2
B0066	BULB, 40A15 130V TEFLON COATED
B0553	BULB, TUFFSKIN 40W 250V
SR2A051	BUMPER, KS
F0158	BUSHING, BLK 1/2 HEYCO SNAP
F0155	BUSHING, BLK 7/8 HEYCO SNAP
F0312	BUSHING, CONDUIT 3/8" PLASTIC
SB0336A	CAB ASSY SRC S/S NO CAM
SB0331	CAB ASSY SRC S/S NO CAM 2 1000
AN30102500	CABINET ASSY. CO
SRCA026	CALROD ACCESS PANEL LS CUST
SRCA066	CALROD ACCESS PANEL RS CUST
B0452B	CALROD BRACKET ASSY, SR
SB0304	CALROD COVER WELD ASSY, SRC
SB0340	CALROD PIGTAIL ASSY SRC 220/380
SB0332	CALROD PIGTAIL ASSY SRC120/208
SB0333	CALROD PIGTAIL ASSY SRC120/240
C0001	CALROD, 208V 2500W OFFSET
C0002	CALROD, 240V 2500W OFFSET
F0063	CLAMP, SAFETY 16101-S 1/4 DIA
FT0031	COLLAR, 5/8 SET LSC-10
SRCA053	CONDUIT, 3/8" FLEX 14"
FT0063	CONNECTOR, BOX #7265V, 3/8"
AN30105300	CONTROL PANEL ASSY CO
AN30102900	CONTROL PANEL ASSY. CO
FB30101703	CONTROL PANEL,REAR CO
SR2A012	CORNER POST PLAIN SR2
SR2A074	CORNER POST, LEFT SIDE
SRCA037	COVER, BLOWER MOTOR
AN30100100	CTL PNL SRC 120/208-240/3 NO H/S
SB0338	CTL PNL SRC 220/380/50/3
AN30100300	CTL PNL SRC 220/380/50/3 NO H/S
AN30100200	CTL PNL SRC STR 240V 3PH NO H/S
N0202	DECAL, DANGER HIGH VOLTAGE
N0166	DECAL, DO NOT USE HARSH CLEANERS
N0409	DECAL, LOGO LARGE DIE CAST
N0444	DECAL, NSF TREATED LAMP NOTICE
N0363	DECAL, REMOVABLE ROTORS
SB0341	DOOR ASSY, LH BOTT SRC
SB0049	DOOR ASSY, LH SR
SB0301	DOOR ASSY, RH BOTTOM SRC
SB0218	DROP DOWN PNL ASSY S/S SR

SRC Part #	SRC Part Description
SB0085	DROP DOWN PNL LESS CATCH S/S
AB30103300	ELEMENT ASSY W/WIRE 208V CO
FB30102303	END PANEL RIGHT CO
FB30102103	END PANEL,LEFT CO
MB30101800	GASKET MOUNT VERTICAL CO
MB30101900	GASKET MOUNT,HORIZONTAL CO
DG0007	GASKET, BULB DOOR SEAL
KSA071	GASKET, GREASE SMOKER
G0317	GASKET,DOOR CO
SB0123	GREASE DRWR SLIDE WELD SR2 SRC
G0023	GUARD, GRILL 9 BAR (TOP)
HCA014	GUARD, LAMPHOLDER PLATE SR KS LMWS
FB30103409	HEAT BARRIER,CONTROL PANEL CO
SRA053	HINGE BLOCK, KS, SP, DP
H0143	HINGE BRACKET LH VG 8/16
H0142	HINGE BRACKET RH VG8/16
H0081	HUB, SR KNOCK OFF SPIDER TYPE
AB30103000	INNER DOOR ASSY CO
SRCA086	INSIDE BLOWER CABINET, SRC
SRWA073	INSIDE H/S COVER PLATE
SRCA083	INSIDE TOP, S/S
SRA089	INSPECTION PLATE CONTROL PANEL
G0052	INSULATED MITT 13"
I0011	INSULATION, KAOWOOL STRIP
I0002	INSULATION, PEERLESS FIBER 3"
I0010	INSULATION, RANGE 1" FIBERGLASS
I0005	INSULATION,1"TK
SRA056	LATCH BLOCK, KS
SB0625	MICRO SWITCH BRKT ASSY KS
SB0343	MICRO SWITCH BRKT ASSY SRC
SR2A035	MOTOR COVER SR2
SRA108	MOTOR COVER SPACER, SR SERIES
FB30101509	MOUNT,MICROSWITCH CO
N0023	NAME & RATING TAG, UL
NUT050	NUT, 10-24 FLEX LOCK
NUT076	NUT, 10-24 PALNUTS
NUT055	NUT, 5/16-18 FINISHED HEX
NUT048	NUT, 6-32 HEX ZINC PLTD
NUT081	NUT, SPEED C-83410-A-67
AB30104200	OUTER DOOR OPER.SIDE ASSY CO
SRWA072	OUTSIDE H/S COVER PLATE
WB30102200	OUTSIDE TOP WELDMENT CO
SRCA020	PANEL, INSULATION SRC
SRA046	PANEL, SIDE INSL SR
SRWA124	PANEL, TOP INSULATION

SRC Part #	SRC Part Description
SRA052	PLATE, OUTSIDE CALROD KS SR SERIES
HT0016	QUARTZ TUBE, 115-125V QH500T3
HT0002	QUARTZ TUBE, 200-220V QH1000T3
HT0003	QUARTZ TUBE, 230-250V QH1000T3
R0029	RACK, 19 1/4 X 25 3/4
SR1003	RACK, SIDE TRAY SRC
IC30104600	REF DGW FINAL ASSY VG-CO
IC30104300	REF.DWG.CO FINAL ASSY 208V
SB0308	RELAY BRACKET ASSY, SRC
SB0339	RELAY BRACKET ASSY, SRC
RIV170	RIVET, 1/8 ALUM (.063-.125)
F0024	RIVNUT, #10-24
F0025	RIVNUT, 5/16"-18
F0077	ROLL PIN, 5/32 X 1 1/8
SB0011B	ROTOR ASSY 6 TRAY LHW/SPRINGS
AN10513900	ROTOR ASSY MSR
AN10504800	ROTOR ASSY, W/O SPRINGS
SCR466	SCREW 6-32 X 3/4 PH.FLT.
SCR364	SCREW, 1/4-20 X 1/4 SOC SET
SCR252	SCREW, 10 X 1 1/2 PHIL PAN
SCR011	SCREW, 10 X 1 PHIL TRUSS HD
SCR138	SCREW, 10 X 1/2 PHIL TR H
SCR008	SCREW, 10 X 1/2 PHIL TRUSS
SCR016	SCREW, 10 X 1/2 SLTD HEX SER WSH
SCR126	SCREW, 10 X 2 SLTD PAN
SCR197	SCREW, 10-24 X 1 1/2 PHIL FL
SCR160	SCREW, 10-24 X 1 1/2 SLTD RD
SCR287	SCREW, 10-24 X 3/4 FLAT PHIL
SCR369	SCREW, 10-24 X 3/4 PHIL RD
SCR434	SCREW, 10-24 X 3/8 PHIL TR
SCR075	SCREW, 10-24 X 3/8 SHOULDER
SCR062	SCREW, 5/16-18 X 1 HEX CAP
SCR236	SCREW, 5/16-18 X 1 WHIZ'LOC
SCR282	SCREW, 5/16-18 X 3/4 HEX CAP
SCR356	SCREW, 5/16-18 X 5/16 SOC SET
SCR194	SCREW, 6-32 X 1 SLTD RD
SCR228	SCREW, 6-32 X 1/4 SLTD RD
SCR006	SCREW, 8 X 1/2 PHIL PAN
SCR176	SCREW, 8-32 X 3/8 SLTD BINDING
SCR448	SCREW, STUD 10-24 X 1-1/4 WELD
SCR273	SCREW, 1/4-20 X 1/2 HEX CAP W/HOLE
SCR272	SCREW, 10-24 X 1/2 HEX CAP W/HOLE
SCR067	SCREW, 5/16-18 X 2 1/2 SLTD TRUSS
WN10504600	SHAFT/PULLEY WELD MSR SR SR2 SRW
FA55113510	SHIM UPPER HINGE INNER DOOR VGUK

SRC Part #	SRC Part Description
SR2A044	SIDE DRAIN PIPE, 4 1/2"
SB0126	SIDE GREASE DRAWER ASSY, SR'S
SB0305B	SIDE INSERT ASSY, ELEC NKL SRC
SB0309	SIDE STIFFENER ASSY SRC
KSA096	SKIRT, BOTTOM
SB0219	SOLID PANEL, S/S SR
SP0007	SPACER, ALUM 11/16"
SP0004	SPACER, ALUM 3/4 X 1 1/2
H0082	SPINNER, SR KNOCK OFF HUB
WSRCA076	SRC INSIDE BOTT PAN WELD
SRA091	STAND OFF STRIP
S0346	SWITCH, MICRO 15A 125-480VAC
TB0085	TERM BLOCK 2P JUMPER
SB0008A	TERM BRKT ASSY 1 OR 3P
F0246	TERMINAL, 1/4" 12-10 AWG FEM
F0247	TERMINAL, 1/4" 12-10 AWG MALE
T0098	THERMOSTAT, HI-LIMIT 500F
F0083	THREAD INSERT 10-24 STEEL
F0136	THREAD INSERT 10-24 STEEL HEX
F0081	THREAD INSERT 3/8-16 STEEL
F0086	THREAD INSERT 5/16-18 STEEL
SB0111	TOP OUTSIDE FRAME WELD ASSY KS
SRWA026	TOP STIFFNER SRW
SRCA036	TOP, BLOWER COVER SRC
SB0112	TOP, OUTSIDE W/STAND OFF ROD
TF0035	TRANSFORMER, 230V 50/60HZ TO
VB0006	V-BELT, A-135D
WSH246	WASHER, #10 INT TOOTH S/S
WSH089	WASHER, #6 INT LOCK ZINC PLATED
WSH045	WASHER, 5/16 LOCK ZINC PLTD
WSH039	WASHER, 5/16 SAE FLAT
WSH040	WASHER, 5/16 USS FLAT
WSH252	WASHER, TEFLON SR SERIES
SRA054	WIRE TRACK, KS SR

### SRW Parts List

SRW Part #	SRW Part Description
SB0237	BASE ASSY 208 240V SRW CASTERS
SB0217	BASE ASSY SRW 115V CASTERS
SB0233	BOTTOM RACK ASSY, SRW
SR2A056	BRACE, MOTOR COVER SR2
SPCA162	BRACKET, CALROD MTG CANADA
B0453	BRACKET, SRW CALROD
B0066	BULB, 40A15 130V TEFLON COATED
B0553	BULB, TUFFSKIN 40W 250V



SRW Part #	SRW Part Description
SR2A051	BUMPER, KS
F0158	BUSHING, BLK 1/2 HEYCO SNAP
F0155	BUSHING, BLK 7/8 HEYCO SNAP
SB0290A	CAB ASSY SRW S/S NO CAM
SB0292A	CAB ASSY SRW SOL BACK NO CAM
SB0296A	CAB ASSY SRW SOL BACK NO CAM
B0452B	CALROD BRACKET ASSY, SR
SRWA131	CALROD GROUNDING CLIP, CANADA
C0221	CALROD, 208V 2000W
C0001	CALROD, 208V 2500W OFFSET
C0222	CALROD, 240V 2000W
C0002	CALROD, 240V 2500W OFFSET
F0063	CLAMP, SAFETY 16101-S 1/4 DIA
FT0031	COLLAR, 5/8 SET LSC-10
SB0289	CORD SET, 7' ALBERTSON SRW MSR
SRWA077	CORNER POST SRW
SRWA008	COVER, MOTOR SRW
AN20100100	CTL PNL SRW 120/208/60/1-3 NO H/S
SB0295	CTL PNL SRW 220/380/60/1-3
SB0293	CTL PNL SRW 220/60/1
AN20100200	CTL PNL SRW 240/60/3 NO H/S
N0202	DECAL, DANGER HIGH VOLTAGE
N0166	DECAL, DO NOT USE HARSH CLEANERS
N0409	DECAL, LOGO LARGE DIE CAST
N0022	DECAL, NSF
N0444	DECAL, NSF TREATED LAMP NOTICE
N0363	DECAL, REMOVABLE ROTORS
N0034	DECAL, WATER PAN NOTICE
SB0210	DOOR ASSY, LH BOTT SRW
SB0049	DOOR ASSY, LH SR
SB0202	DOOR ASSY, RH BOTT SRW
SB0005	DOOR ASSY, RH SR
SB0218	DROP DOWN PNL ASSY S/S SR
SB0085	DROP DOWN PNL LESS CATCH S/S
FT0255	ELL, 3/4 90 DEG
SRWA058	FLANGE, FLEXIBLE TUBING
SRWA059	FLEX HOSE STRAP
KSA071	GASKET, GREASE SMOKER
SB0222	GREASE DRAWER ASSY, S/S SR'S
G0022	GUARD, GRILL 6 BAR (BOTTOM)
HCA014	GUARD, LAMPHOLDER PLATE SR KS LMWS
SRA053	HINGE BLOCK, KS, SP, DP
H0081	HUB, SR KNOCK OFF SPIDER TYPE
SRWA073	INSIDE H/S COVER PLATE
SRA089	INSPECTION PLATE CONTROL PANEL

SRW Part #	SRW Part Description
SRWA087	INSUL PANEL, WARMER W/LIGHTS
G0052	INSULATED MITT 13"
I0011	INSULATION, KAOWOOL STRIP
I0002	INSULATION, PEERLESS FIBER 3"
I0010	INSULATION, RANGE 1" FIBERGLASS
LH0021	LAMPHOLDER, #62602 HI TEMP
LH0001	LAMPHOLDER, RD PORCELAIN
SRA056	LATCH BLOCK, KS
SRWA039	LID, SMALL LOUVER SRW
SRWA098	LIGHT GUARD, SRW
SRA108	MOTOR COVER SPACER, SR SERIES
N0023	NAME & RATING TAG, UL
NUT076	NUT, 10-24 PALNUTS
NUT083	NUT, SPEED PS-312010-S
NUT082	NUT, SPEED PS-438014-S
SRWA072	OUTSIDE H/S COVER PLATE
SRA076	OUTSIDE TOP,
SRWA038	PANEL, MDL LOUVERED SRW
SRA046	PANEL, SIDE INSL SR
SRWA124	PANEL, TOP INSULATION
SRA052	PLATE, OUTSIDE CALROD KS SR SERIES
FT0015	PLUG, HOLE 1/2"
HT0016	QUARTZ TUBE, 115-125V QH500T3
HT0002	QUARTZ TUBE, 200-220V QH1000T3
HT0003	QUARTZ TUBE, 230-250V QH1000T3
R0022	RACK, 24 1/2 X 26
RC0009	RECEPTACLE, FLUSH 60A 250V
RIV170	RIVET, 1/8 ALUM (.063-.125)
F0024	RIVNUT, #10-24
F0025	RIVNUT, 5/16"-18
F0015	ROLL PIN, 5/32 X 1 1/4
F0077	ROLL PIN, 5/32 X 1 1/8
SB0011B	ROTOR ASSY 6 TRAY LHW/SPRINGS
AN10513900	ROTOR ASSY MSR
AN10504800	ROTOR ASSY, W/O SPRINGS
SRWA067	S/S SLIDE FOR RACK
SCR244	SCREW, 10-24 X 1/2 SLTD TRUSS
SCR369	SCREW, 10-24 X 3/4 PHIL RD
SCR136	SCREW, 10-24 X 3/8 SLTD TRUSS
SCR356	SCREW, 5/16-18 X 5/16 SOC SET
SCR118	SCREW, 6-32 X 5/8 SLTD RD
SCR006	SCREW, 8 X 1/2 PHIL PAN
SCR448	SCREW, STUD 10-24 X 1-1/4 WELD
SCR067	SCREW, 5/16-18 X 2 1/2 SLTD TRUSS
WN10504600	SHAFT/PULLEY WELD MSR SR SR2 SRW

SRW Part #	SRW Part Description
SB0206	SIDE STIFFENER ASSY SRW
KSA096	SKIRT, BOTTOM
SB0219	SOLID PANEL, S/S SR
SP0007	SPACER, ALUM 11/16"
H0082	SPINNER, SR KNOCK OFF HUB
SB0209	SRW S/S SOLID DOOR PNL, BOTTOM
SRA091	STAND OFF STRIP
SB0008	TERM BLOCK ASSY, 4 TB0001
SB0008A	TERM BRKT ASSY 1 OR 3P
F0294	TERMINAL, RING TONGUE
F0081	THREAD INSERT 3/8-16 STEEL
SB0111	TOP OUTSIDE FRAME WELD ASSY KS
SRWA026	TOP STIFFNER SRW
SB0112	TOP, OUTSIDE W/STAND OFF ROD
TF0035	TRANSFORMER, 230V 50/60HZ TO
VB0009	V-BELT, A-120
F0126	WASHER, REDUCER #125-75 APP
WSH252	WASHER, TEFLON SR SERIES
WSRWA079	WATER PAN WELDMENT, SRW
SB0203	WELL ASSY, SRW 120/208
SB0239	WELL ASSY, SRW 208 OR 240V

**KS Parts List**

KS Part #	KS Part Description
SB0624	BASE ASSY, CASTERS KS
SB0632	BEARING ADJUST. BOLT WELD, KS
B0213	BEARING, FAFNIR VTU-1
SR2A056	BRACE, MOTOR COVER SR2
B0451	BRACKET, KS CTR CALROD
SR2A051	BUMPER, KS
F0154	BUSHING, BLK 1-3/16 HEYCO SNAP
F0155	BUSHING, BLK 7/8 HEYCO SNAP
SB0647	CAB ASSY KS S/S
SB0685	CAB ASSY KS S/S 220/380 L0103
SB0648	CAB ASSY KS S/S 220V 230V
SB0677	CAB ASSY KS S/S SOLID BACK
F0064	CABLE TIES, 7 1/2" NO EYELET
F0096	CABLE TIES, 7 1/2" W/EYELET
B0452B	CALROD BRACKET ASSY, SR
KSA014	CALROD BRACKET SUPPORT ROD, KS
KSA130	CALROD HEAT DEFLECTOR, KS
C0001	CALROD, 208V 2500W OFFSET
C0004	CALROD, 208V 2500W STRAIGHT
C0002	CALROD, 240V 2500W OFFSET
C0005	CALROD, 240V 2500W STRAIGHT

KS Part #	KS Part Description
SB0608	CHAIN ASSY, KS 13 LINK
CH0001	CHAIN, #50 RIV DRIVE
F0063	CLAMP, SAFETY 16101-S 1/4 DIA
F0062	CONNECTOR, AMP 1-321235-0
KSA068	CORNER POST, KS
SB0612	COVER, CALROD ASSY, KS
AN60000100	CTL PNL KS 120/208/60/3 NO H/S&G/S
AN60000200	CTL PNL KS 220/380/50/3 NO H/S&G/S
AN60000300	CTL PNL KS 220/60/3
SB0644	CTL PNL KS 220/60/3
N0341	DECAL, CAUTION REMOVE PLASTIC
N0202	DECAL, DANGER HIGH VOLTAGE
N0409	DECAL, LOGO LARGE DIE CAST
N0022	DECAL, NSF
SB0627	DOOR ASSY LH KS L0004 LATCH
SB0684	DOOR ASSY LH KS L0103 LATCH
SB0602	DOOR ASSY RH KS L0004 LATCH
SB0683	DOOR ASSY RH KS L0103 LATCHKET
SB0686	DRIP GUARD COVER WELDMENT, KS
SB0630	DRIVE SPROCKET PAINT ASSY, KS
SB0678	DROP DOWN PANEL ASSY S/S
SB0601	DROP DOWN PNL S/S KS
KSA071	GASKET, GREASE SMOKER
SB0222	GREASE DRAWER ASSY, S/S SR'S
G0022	GUARD, GRILL 6 BAR (BOTTOM)
HCA014	GUARD, LAMPHOLDER PLATE SR KS LMWS
SRA053	HINGE BLOCK, KS, SP, DP
SRWA073	INSIDE H/S COVER PLATE
SRA089	INSPECTION PLATE CONTROL PANEL
G0052	INSULATED MITT 13"
I0011	INSULATION, KAOWOOL STRIP
I0002	INSULATION, PEERLESS FIBER 3"
I0010	INSULATION, RANGE 1" FIBERGLASS
I0005	INSULATION, 1"TK
KSA091	KEYSTOCK, BOTTOM SHAFT
LH0021	LAMPHOLDER, #62602 HI TEMP
SRA056	LATCH BLOCK, KS
SB0625	MICRO SWITCH BRKT ASSY KS
SB0626	MICRO SWITCH BRKT ASSY KS
SRA108	MOTOR COVER SPACER, SR SERIES
KSA035	MOTOR COVER, KS
N0023	NAME & RATING TAG, UL
NUT057	NUT, 1/2-13 FINISHED HEX
NUT076	NUT, 10-24 PALNUTS
NUT152	NUT, 5/16-18SS 18-8

KS Part #	KS Part Description
NUT081	NUT, SPEED C-83410-A-67
NUT083	NUT, SPEED PS-312010-S
NUT082	NUT, SPEED PS-438014-S
SRWA072	OUTSIDE H/S COVER PLATE
SRA076	OUTSIDE TOP,
KSA042	PANEL, GREASE SMOKER
KSA045	PANEL, SIDE INSL (HICKORY) KS
P0060	PIN, DISC ROTOR STANDOFF
KSA087	PIN, KS BOTTOM BEARING
KSA034	PLATE, BOTTOM SHAFT KS
SRA052	PLATE, OUTSIDE CALROD KS SR SERIES
HT0016	QUARTZ TUBE, 115-125V QH500T3
HT0002	QUARTZ TUBE, 200-220V QH1000T3
HT0003	QUARTZ TUBE, 230-250V QH1000T3
SB0682	RELAY WIRE ASSY KS 220/380/50/3
SB0679	RELAY WIRE ASSY KS 220/380/50
SB0634	RELAY WIRING ASSY, 230V KS
SB0672	RELAY WIRING KS 220/380/50/3
SB0622	RELAY/WIRE KS 120/208 120/240
RIV170	RIVET, 1/8 ALUM (.063-.125)
F0025	RIVNUT, 5/16"-18
SCR287	SCREW, 10-24 X 3/4 FLAT PHIL
SCR369	SCREW, 10-24 X 3/4 PHIL RD
SCR228	SCREW, 6-32 X 1/4 SLTD RD
SCR006	SCREW, 8 X 1/2 PHIL PAN
SCR176	SCREW, 8-32 X 3/8 SLTD BINDING
SCR448	SCREW, STUD 10-24 X 1-1/4 WELD
S0034	SEAL, RULON "A" BUSHING
KSA098	SHAFT 1 X 35.625 KS TOP
KSA099	SHAFT 1 X 38.062 W/KEYWAY KS
SB0605	SIDE STIFFENER ASSY KS
KSA096	SKIRT, BOTTOM
SB0676	SOLID PANEL S/S KS SOLID BACK
S0032	SPRING, DIE MH-14
S0023B	SPROCKET, KS TEFLON COATED
SRA091	STAND OFF STRIP
SB0008	TERM BLOCK ASSY, 4 TB0001
TB0025-3	TERM BLOCK, 203SPSE
SB0008A	TERM BRKT ASSY 1 OR 3P
T0016	THERMOSTAT, BS-200 115-230V
F0081	THREAD INSERT 3/8-16 STEEL
KSA110	TOP INSIDE PANEL, S/S
SB0111	TOP OUTSIDE FRAME WELD ASSY KS
SRWA026	TOP STIFFNER SRW
SB0112	TOP, OUTSIDE W/STAND OFF ROD

KS Part #	KS Part Description
TF0035	TRANSFORMER, 230V 50/60HZ TO
WSH047	WASHER, 1/2 LOCK ZINC PLTD
WSH042	WASHER, 1/2 USS FLAT
WSH101	WASHER, 5/16 INT LOCK
WSH043	WASHER, 5/8 USS FLAT
SRA054	WIRE TRACK, KS SR

**LMWS Parts List**

LMWS Part #	LMWS Part Description
SB5318	BASE ASSY, CASTERS LMWS 115V
SB5325	BASE ASSY, CASTERS LMWS 220V
SB5308	BLOWER MOTOR ASSY, LMWS
SPCA162	BRACKET, CALROD MTG CANADA
SR2A043	BRACKET, GREASE DRAWER SR2
B0066	BULB, 40A15 130V TEFLON COATED
B0553	BULB, TUFFSKIN 40W 250V
F0156	BUSHING, BLK 5/8 HEYCO SNAP
SB5331	CAB ASSY LMWS S/S
SRWA131	CALROD GROUNDING CLIP, CANADA
C0215	CALROD, 208V 1100W
C0216	CALROD, 240V 1100W
F0063	CLAMP, SAFETY 16101-S 1/4 DIA
FT0049	COLLAR, 1/2" SET BRIGHT
LMWSA022	CORNER POST
AN53000300	CTL PNL LMWS 1 PH NO H/S
AN53000500	CTL PNL LMWS 220/50/1 NO H/S
AN53000400	CTL PNL LMWS 220/60/1 NO H/S
AN53000200	CTL PNL LMWS 230V NO H/S
AN53000600	CTL PNL LMWS 3 PH NO H/S
N0387	DECAL, 300 DEG MAX FOR DR34
N0517	DECAL, BKI LOGO ADHESIVE BACK
N0202	DECAL, DANGER HIGH VOLTAGE
N0409	DECAL, LOGO LARGE DIE CAST
N0022	DECAL, NSF
N0444	DECAL, NSF TREATED LAMP NOTICE
N0363	DECAL, REMOVABLE ROTORS
N0034	DECAL, WATER PAN NOTICE
SB5319	DOOR ASSY LH OPER LMWS
SB5307	DOOR ASSY RH CUST LMWS
SRWA059	FLEX HOSE STRAP
KSA071	GASKET, GREASE SMOKER
SB5304	GREASE DRAWER ASSY, LMWS
HCA014	GUARD, LAMPHOLDER PLATE SR KS LMWS
H0101	HUB SPINNER, QUIK RELEASE FS/LMWS
H0100	HUB, QUIK RELEASE (FS & LMWS)

LMWS Part #	LMWS Part Description
SRWA073	INSIDE H/S COVER PLATE
SRA089	INSPECTION PLATE CONTROL PANEL
G0052	INSULATED MITT 13"
I0011	INSULATION, KAOWOOL STRIP
I0002	INSULATION, PEERLESS FIBER 3"
I0010	INSULATION, RANGE 1" FIBERGLASS
I0005	INSULATION, 1"TK
LH0001	LAMPHOLDER, RD PORCELAIN
SRA056	LATCH BLOCK, KS
LMWSA009	LID, CENTER LOUVER LMWS
LMWSA026	LID, LOUVER R&L
SB5315	LMWS OUTSIDE TOP FRAME WELD
SB5317	LMWS SIDE RACK ASSY
SB5324	MOTOR BLOWER ASSY, LMWS 220V
LMWSA031	MOTOR COVER
LMWSA059	MOTOR COVER BRACE
LMWSA069	MOTOR COVER SPACER
N0023	NAME & RATING TAG, UL
NUT076	NUT, 10-24 PALNUTS
NUT083	NUT, SPEED PS-312010-S
SRWA072	OUTSIDE H/S COVER PLATE
LMWSA058	OUTSIDE TOP
LMWSA082	PANEL, INSULATION
FT0015	PLUG, HOLE 1/2"
HT0002	QUARTZ TUBE, 200-220V QH1000T3
HT0003	QUARTZ TUBE, 230-250V QH1000T3
R0009	RACK, 19 3/8 X 20
SB5333	REMOV DISC ROTOR W/SPRING LMWS
SB5334	REMOV ROTOR PLAIN SIDE LMWS
RIV170	RIVET, 1/8 ALUM (.063-.125)
RIV172	RIVET, 1/8 CS ZINC (.187-.250)
RIV173	RIVET, 1/8 SS (.187-.250)
SCR017	SCREW, 10 X 1 SLTD HEX WASHER
SCR008	SCREW, 10 X 1/2 PHIL TRUSS
SCR025	SCREW, 10-24 X 3/4 PHIL FL HD
SCR031	SCREW, 10-24 X 3/4 PHIL RD
SCR369	SCREW, 10-24 X 3/4 PHIL RD
SCR236	SCREW, 5/16-18 X 1 WHIZ'LOC
SCR356	SCREW, 5/16-18 X 5/16 SOC SET
SCR448	SCREW, STUD 10-24 X 1-1/4 WELD
SB5313	SHAFT & PULLEY WELD ASSY, LMWS
LMWSA077	SKIRT, BOTTOM LMWS
SB5336	SOLID BACK ASSY, LMWS BOTT SECTION
SB5306	SOLID BACK ASSY, LMWS TOP SECTION
SB0008	TERM BLOCK ASSY, 4 TB0001

LMWS Part #	LMWS Part Description
F0051	TERMINAL, ELEC RING TONGUE
F0294	TERMINAL, RING TONGUE
VB0004	V-BELT, 4L-910
WLMWSA012	WATER PAN WELDMENT, LMWS
LMWSA002	WELL, CALROD, LMWS
W0012	WIRE, #12 GREEN

## Accessories

Part #	Description
<b>SR, SR-2, SRW AND SRC</b>	
G0052	INSULATED MITT 13"
MF001	MEAT FORK
MB0016	MEAT BASKET
MB0018	CHICKEN BASKET WITH PRONGS
MF0026	"V" SPIT
<b>KS</b>	
G0052	INSULATED MITT 13"
FR0001	FRAME
MF0004	MEAT FORK (SINGLE SPIT)
MB0001	MEAT BASKET (FR0001 FRAME NEEDED)
MB0012	CHICKEN RACK BASKET (SB0680S KIT NEEDED)
MB0016	MEAT BASKET (SB0680S KIT NEEDED)
WASCA003	ROASTING PAN (FR0001 FRAME NEEDED)
ASCA005B	BAKING TRAY (FR0001 FRAME NEEDED)
KSA059	COOKIE SHEET (FR0001 FRAME NEEDED)
SB0680S	PIN/NUT/WASHER KIT FOR KS CHAIN
<b>LMWS</b>	
G0052	INSULATED MITT 13"
MF0002	MEAT FORK
MB0007	MEAT BASKET



## Wiring Diagrams

Model	Part #	Description	Figure #
SR	SB10190000	120V/208V/240V/1-3 Phase	Figure 1
SR-2	SB11190100	120V/208V and 120V/240V/1-3 Phase	Figure 2
SR-2	SB11190000	208V/220V/240V/1-3 Phase	Figure 3
SR-2	SB11190200	220V/380V/3 Phase	Figure 4
SRC	SB30190000	120/208V and 120/240V/3 Phase	Figure 5
SRC	SB30190300	220V/380V/50 HZ/3 Phase	Figure 6
SRC	SB30190200	240V/3 Phase	Figure 7
SRW	SB20190100	120V/208V/240V/1-3 Phase	Figure 8
SRW	SB20190000	208V/220V/240V/1-3 Phase	Figure 9
KS	SB60090200	220V/380V/50 HZ/3 Phase	Figure 10
KS	SB60090300	208V/220V/240V/3 Phase	Figure 11
KS	SB60090000	120V/208V and 120V/240V/1-3 Phase	Figure 12
LMWS	SB53090000	120V/208V and 120V/240V/1 Phase	Figure 13
LMWS	SB53090200	120V/208V/60 HZ/3 Phase	Figure 14
LMWS	SB53090100	208V/220V/230V/1 Phase	Figure 15
LMWS	SB53090300	220V/50 HZ/1 Phase	Figure 16

Figure 1. SR 120V/208V/240V/1-3 Phase

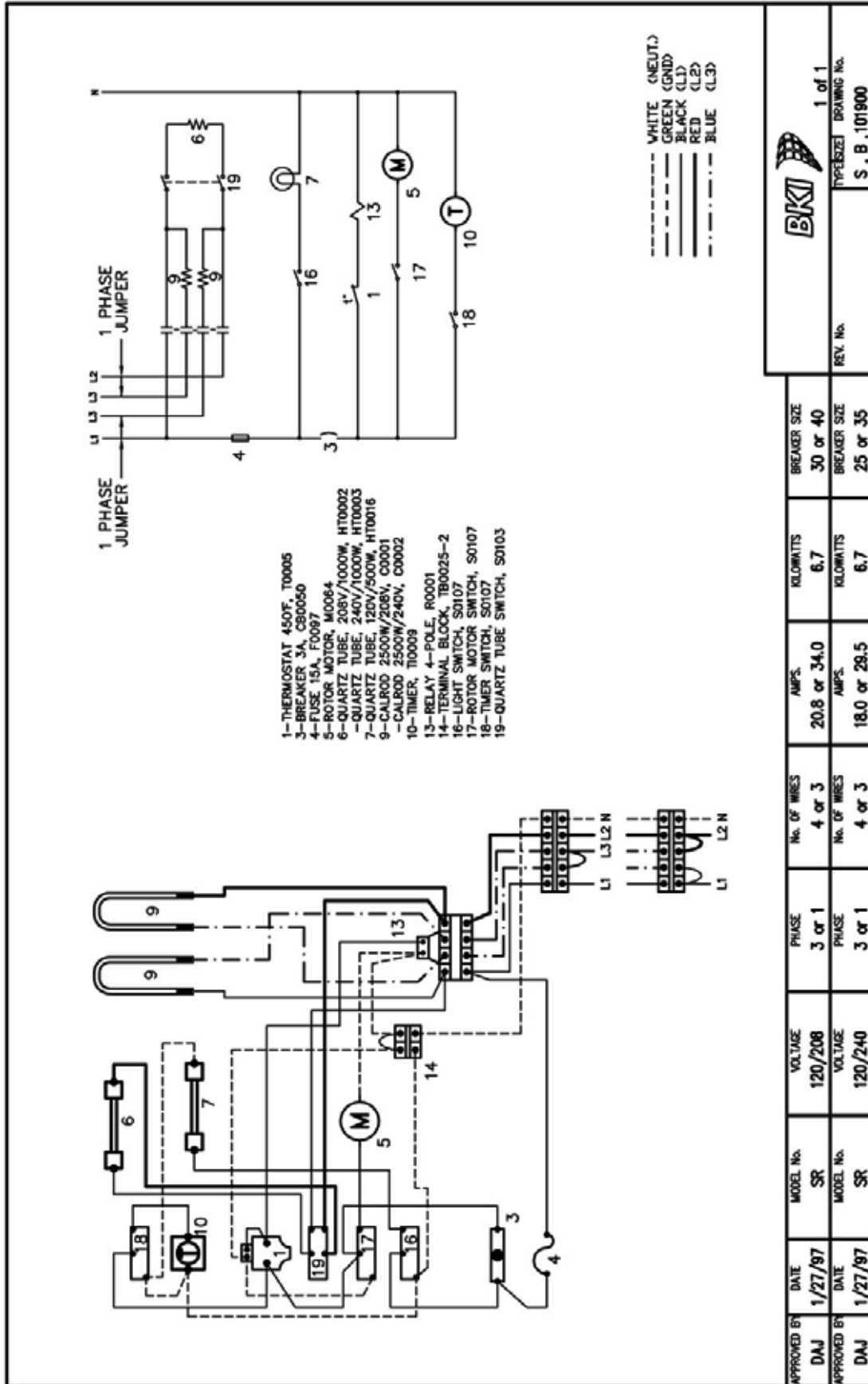


Figure 2. SR2 120V/208V and 120V/240V/1-3 Phase (Sheet 1 of 2)

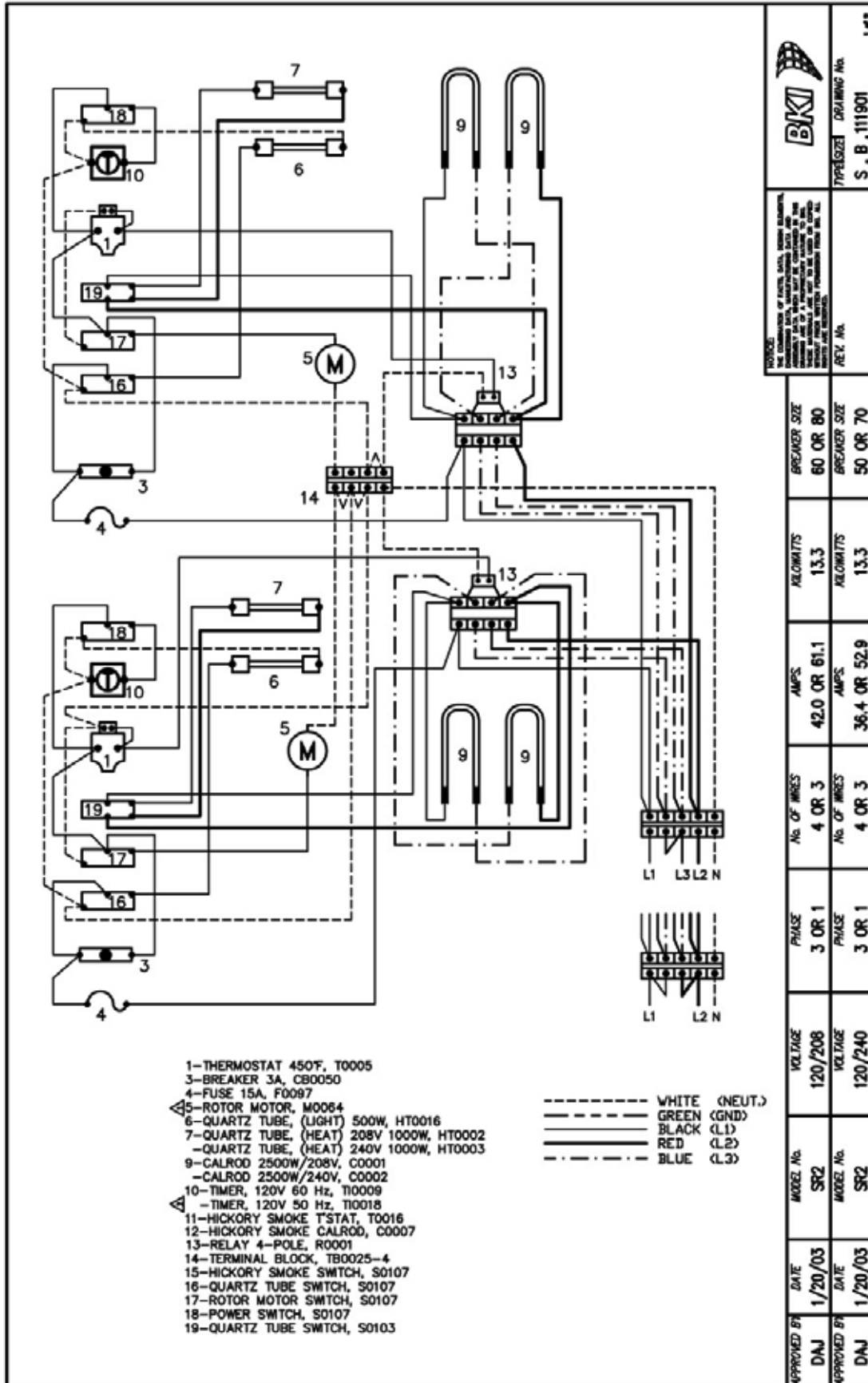


Figure 2. SR2 120V/208V and 120V/240V/1-3 Phase (Sheet 2 of 2)

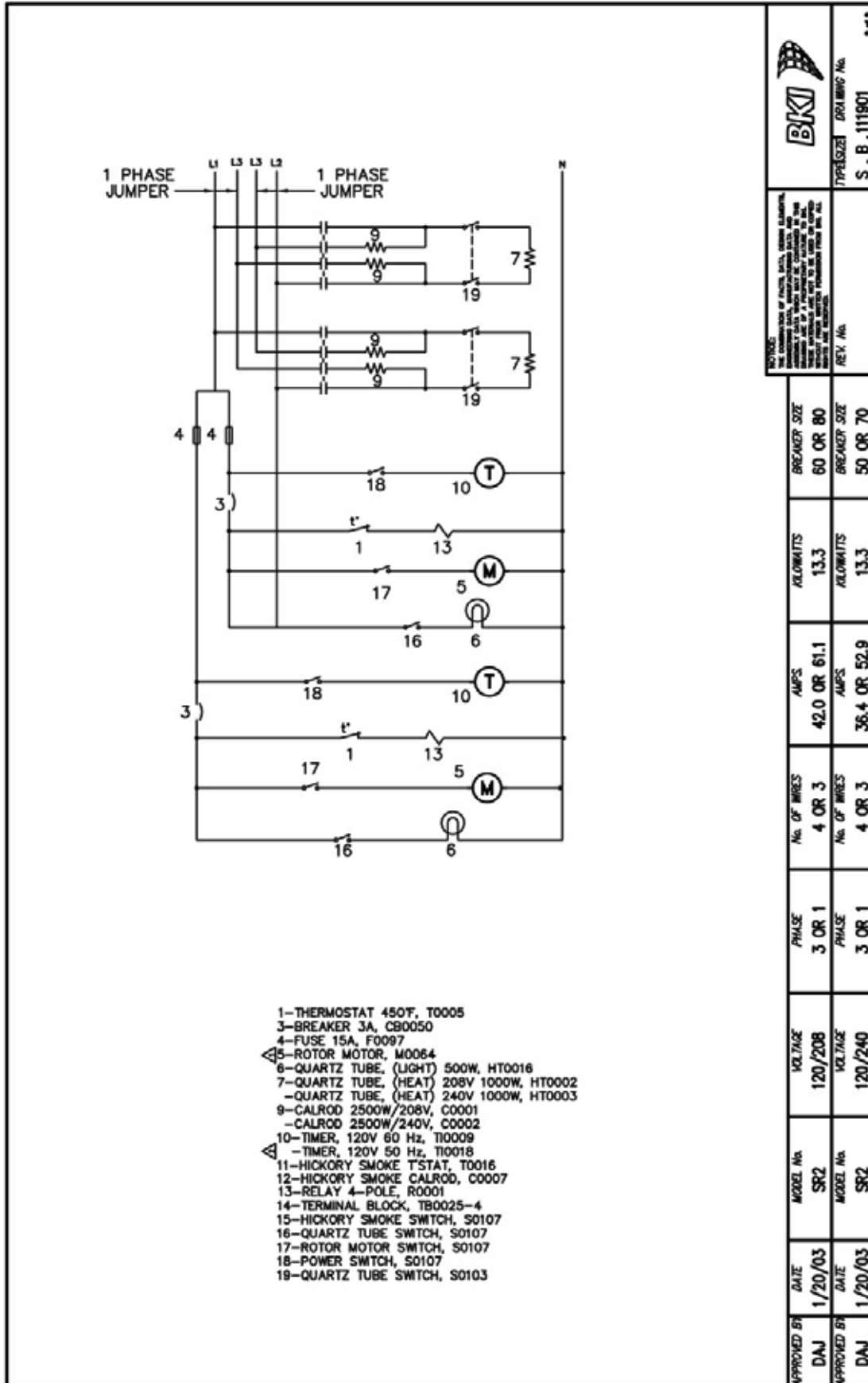


Figure 3. SR2 208V/220V/240V/1-3 Phase (Sheet 1 of 2)

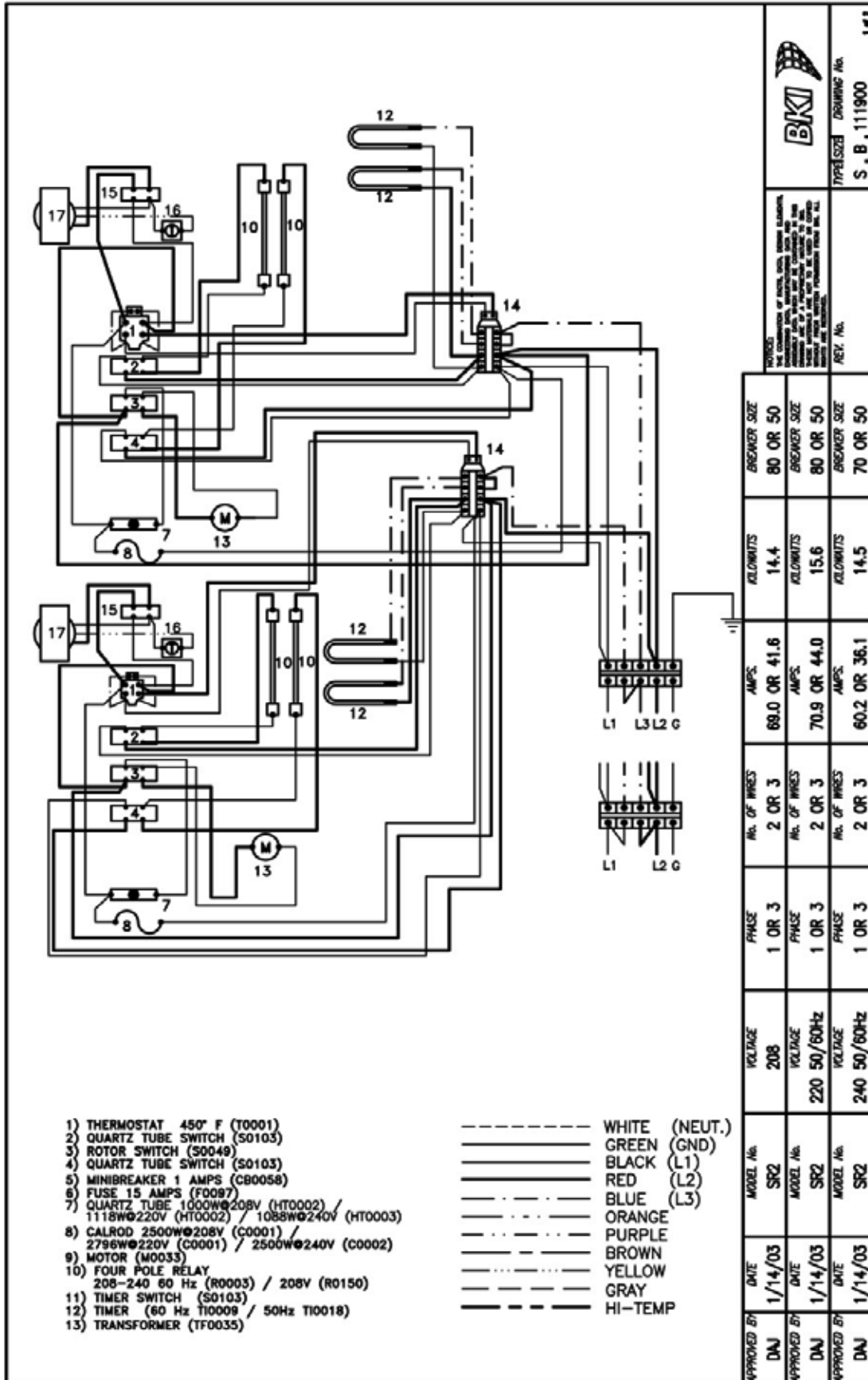
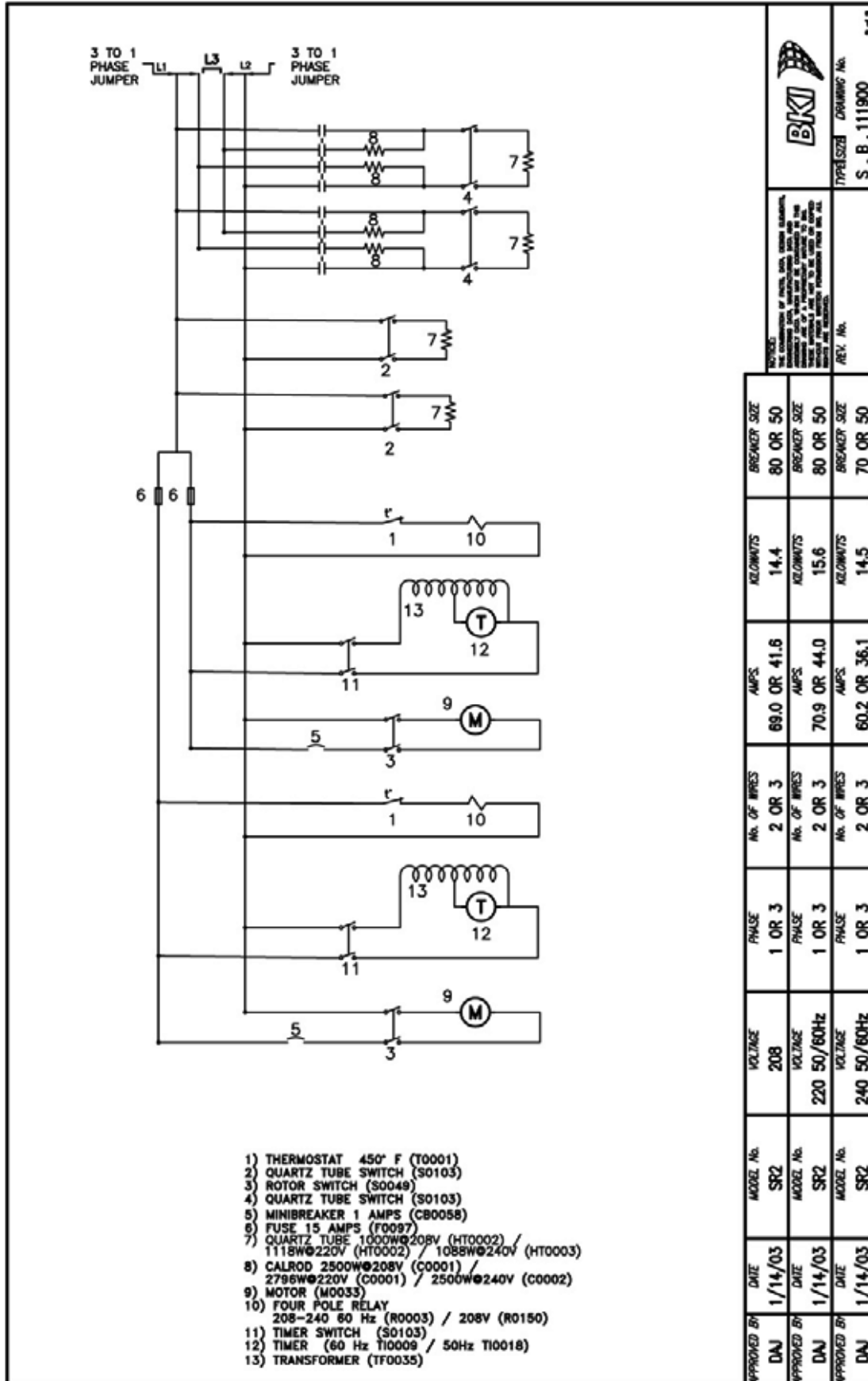


Figure 3. SR2 208V/220V/240V/1-3 Phase (Sheet 2 of 2)



		TYPE SIZE		DRAWING No.				
		S, B, 111800		2 of 2				
REVISIONS: NO. DESCRIPTION OF REVISION DATE, DRAWN, CHECKED, APPROVED, BY		REV. No.		REV. No.				
APPROVED BY	DATE	MODEL No.	VOLTAGE	PHASE	No. OF WIPES	AMPS	KILOWATTS	BREAKER SIZE
DAJ	1/14/03	SR2	208	1 OR 3	2 OR 3	69.0 OR 41.6	14.4	80 OR 50
APPROVED BY	DATE	MODEL No.	VOLTAGE	PHASE	No. OF WIPES	AMPS	KILOWATTS	BREAKER SIZE
DAJ	1/14/03	SR2	220 50/60Hz	1 OR 3	2 OR 3	70.9 OR 44.0	15.6	80 OR 50
APPROVED BY	DATE	MODEL No.	VOLTAGE	PHASE	No. OF WIPES	AMPS	KILOWATTS	BREAKER SIZE
DAJ	1/14/03	SR2	240 50/60Hz	1 OR 3	2 OR 3	60.2 OR 36.1	14.5	70 OR 50

Figure 4. SR2 220V/380V/3 Phase (Sheet 1 of 2)

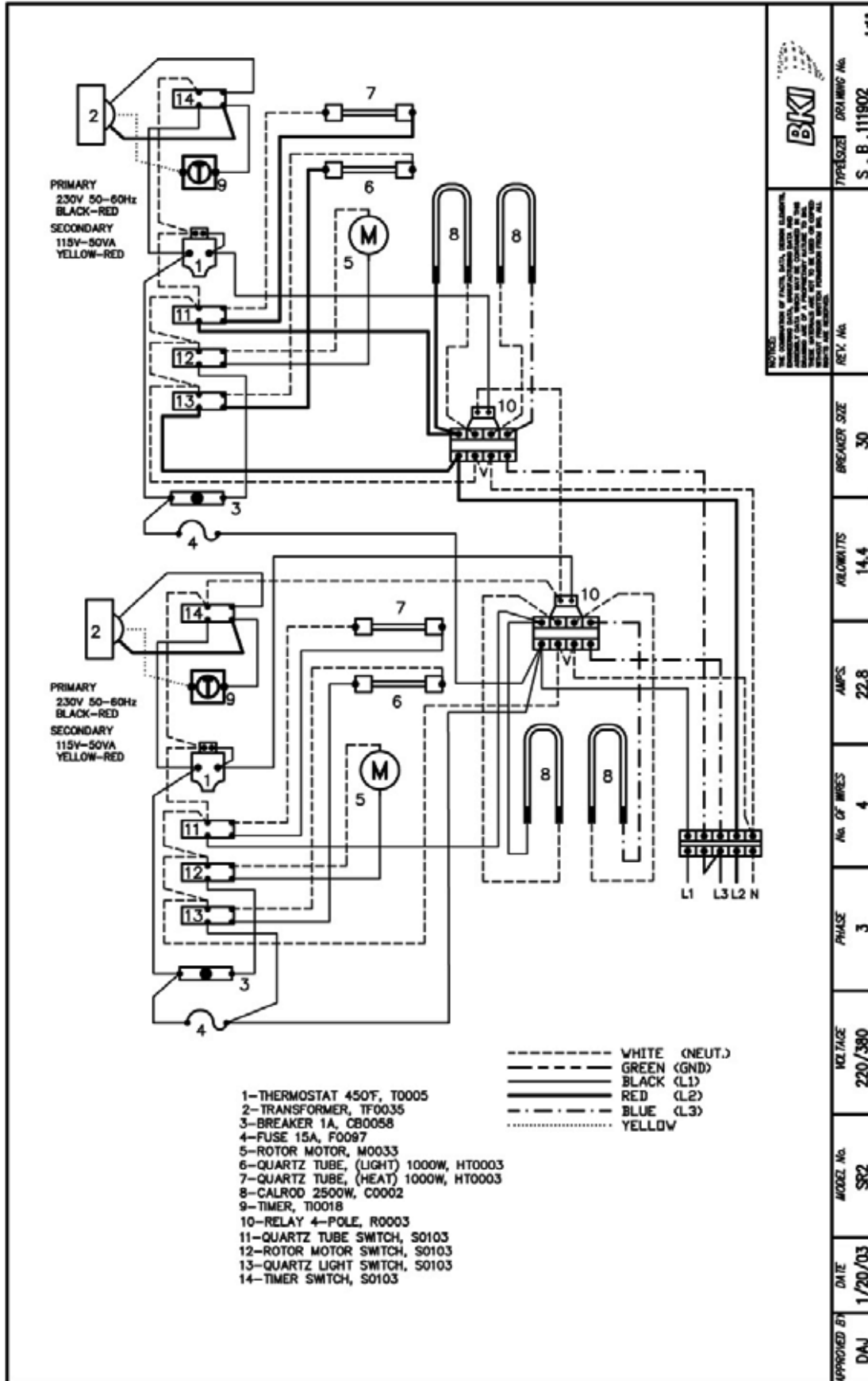
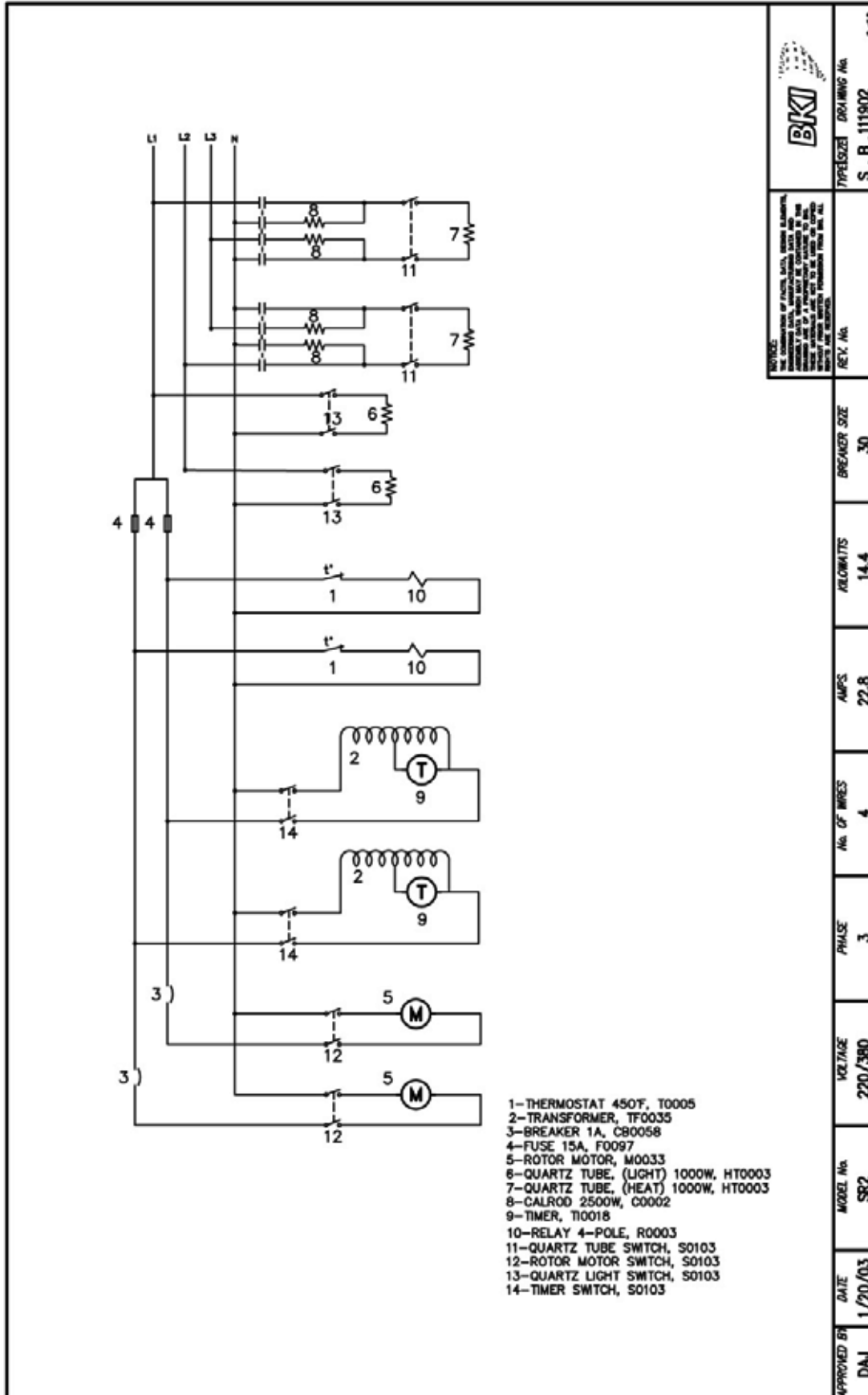


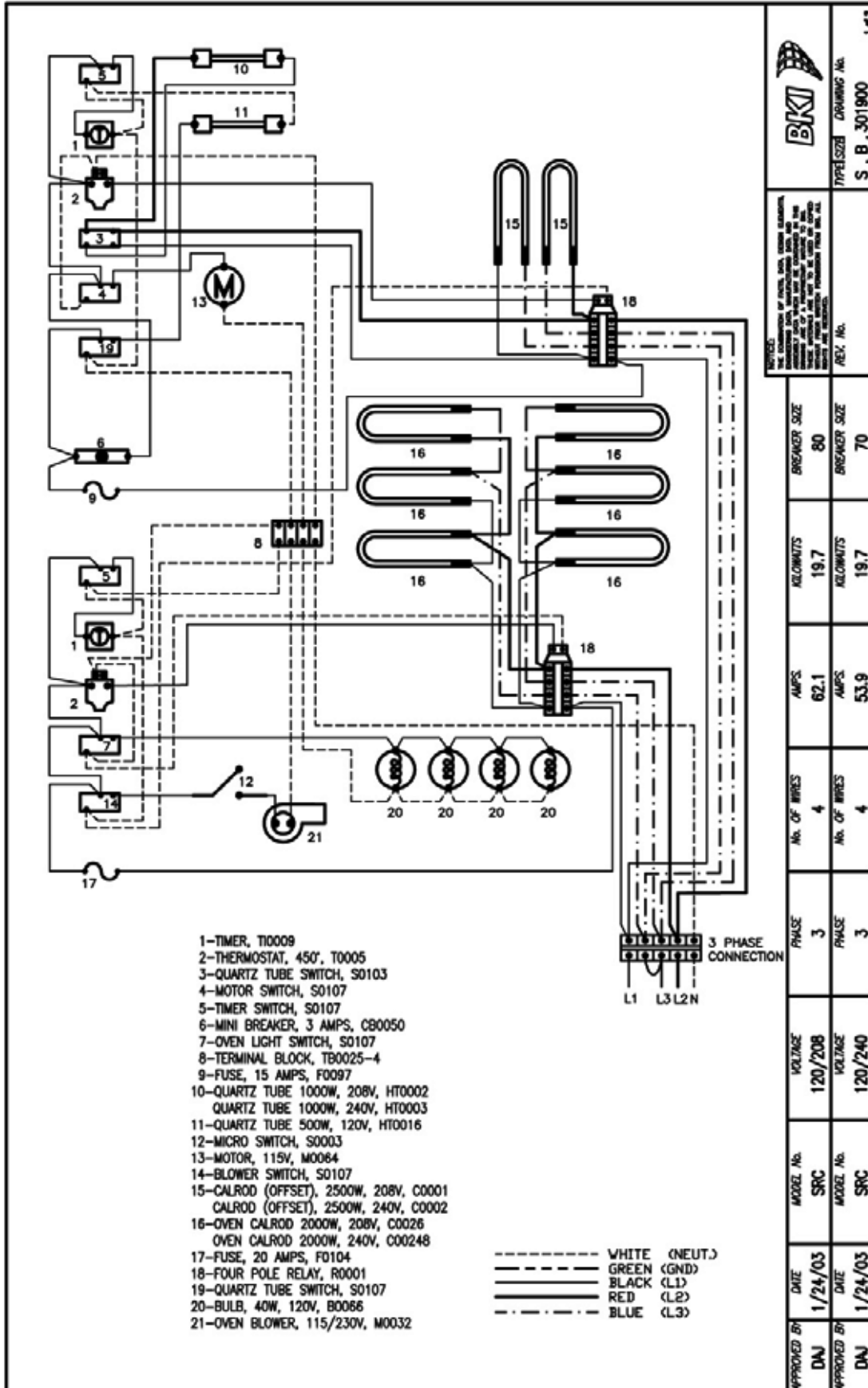
Figure 4. SR2 220V/380V/3 Phase (Sheet 2 of 2)



	TYPE/SIZE: SR2 DRAWING No. S, B, 111902 3 of 2
	REV. No.
NOTES: THE DIMENSIONS OF PANEL, BUILT, MOUNT, ELEMENTS, AND OTHER PARTS WHICH ARE NOT SHOWN IN THE DRAWING SHALL BE AS SPECIFIED IN THE DRAWING AND AS APPROVED BY THE DESIGNER AND MANUFACTURER.	BREAKER SIZE 30
	RELAYS 14.4
	AMPS 22.8
	No. OF WIRES 4
	PHASE 3
	VOLTAGE 220/380
APPROVED BY DAJ	MODEL No. SR2
DATE 1/20/03	



Figure 5. SRC 120/208V and 120/240V/3 Phase (Sheet 1 of 2)



		TYPE/SIZE		DRAWING NO.	
		S, B, 301900		1, #3	
REVISIONS: NO. LOCATION OF REV. DATE REASON FOR REV. 1 1 1/24/03 120/208V/3 PHASE 2 1 1/24/03 120/240V/3 PHASE		REV. NO.			
BROKER SIZE		80		BROKER SIZE	
ALLOUENTS		19.7		ALLOUENTS	
AMPS		62.1		AMPS	
NO. OF WIRES		4		NO. OF WIRES	
PHASE		3		PHASE	
VOLTAGE		120/208		VOLTAGE	
MODEL No.		SRC		MODEL No.	
DATE		1/24/03		DATE	
APPROVED BY		DAJ		APPROVED BY	
VOLTAGE		120/240		VOLTAGE	
MODEL No.		SRC		MODEL No.	
DATE		1/24/03		DATE	
APPROVED BY		DAJ		APPROVED BY	

Figure 5. SRC 120/208V and 120/240V/3 Phase (Sheet 2 of 2)

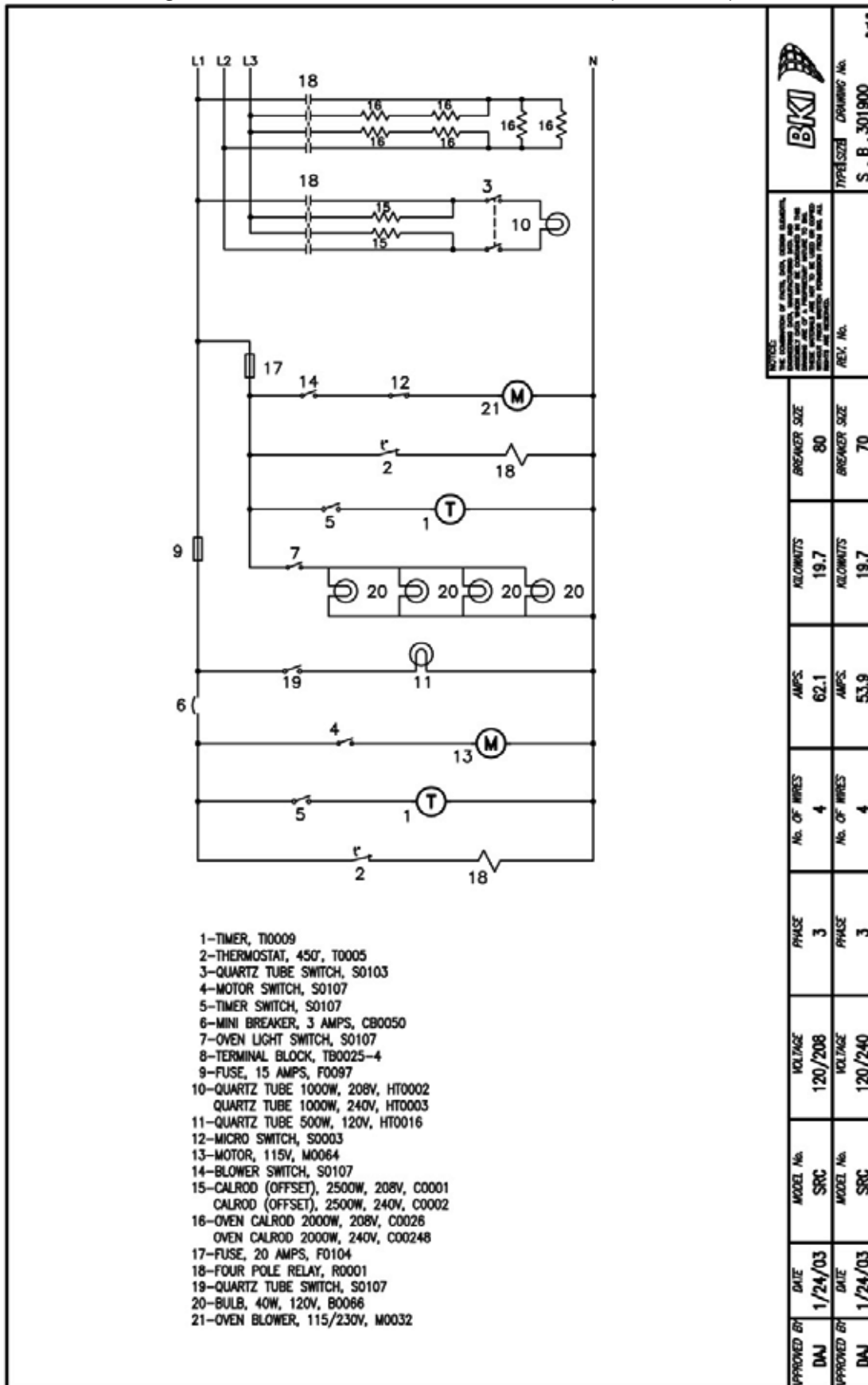


Figure 6. SRC 220V/380V/50 HZ/3 Phase (Sheet 1 of 2)

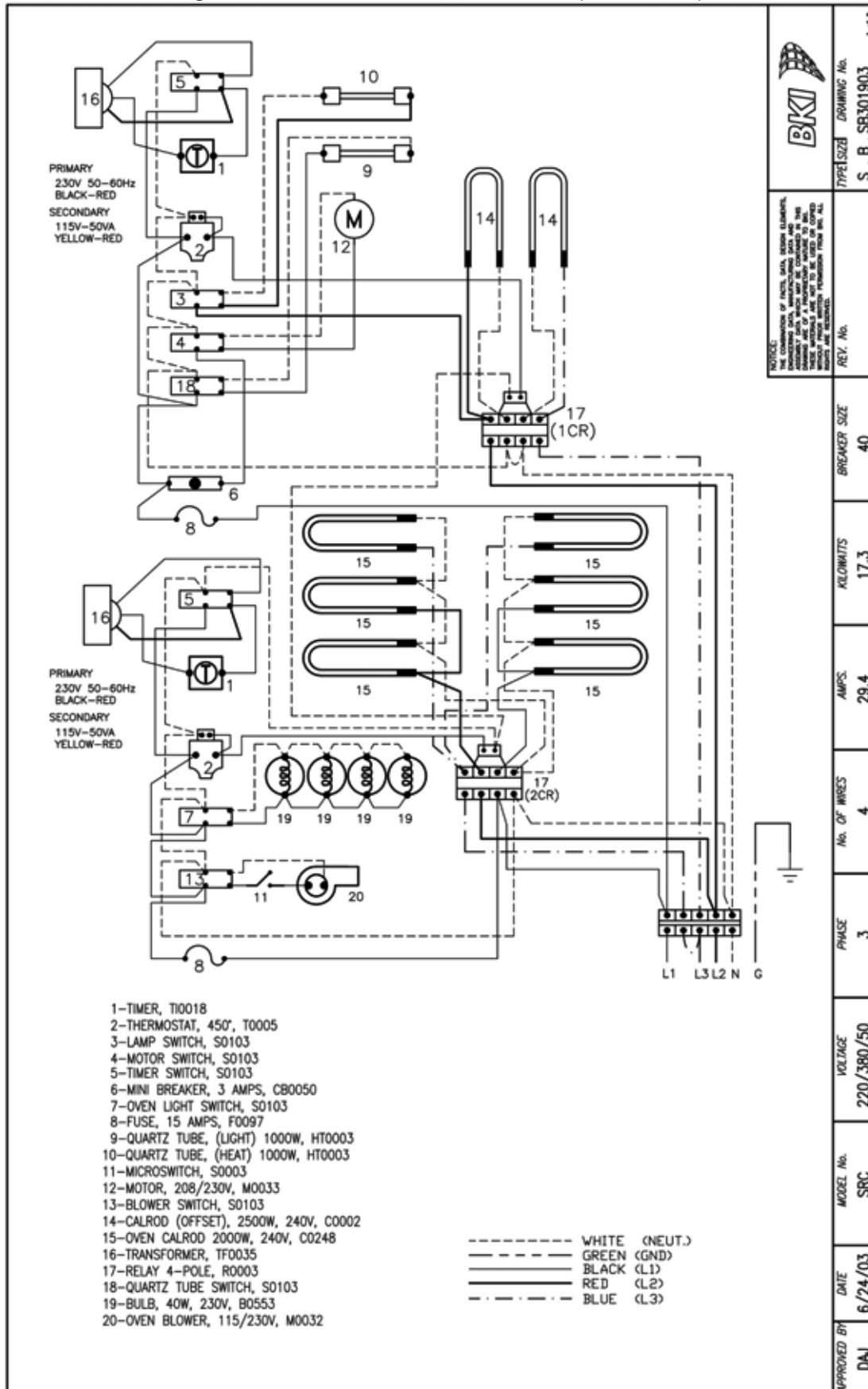


Figure 6. SRC 220V/380V/50 HZ/3 Phase (Sheet 2 of 2)

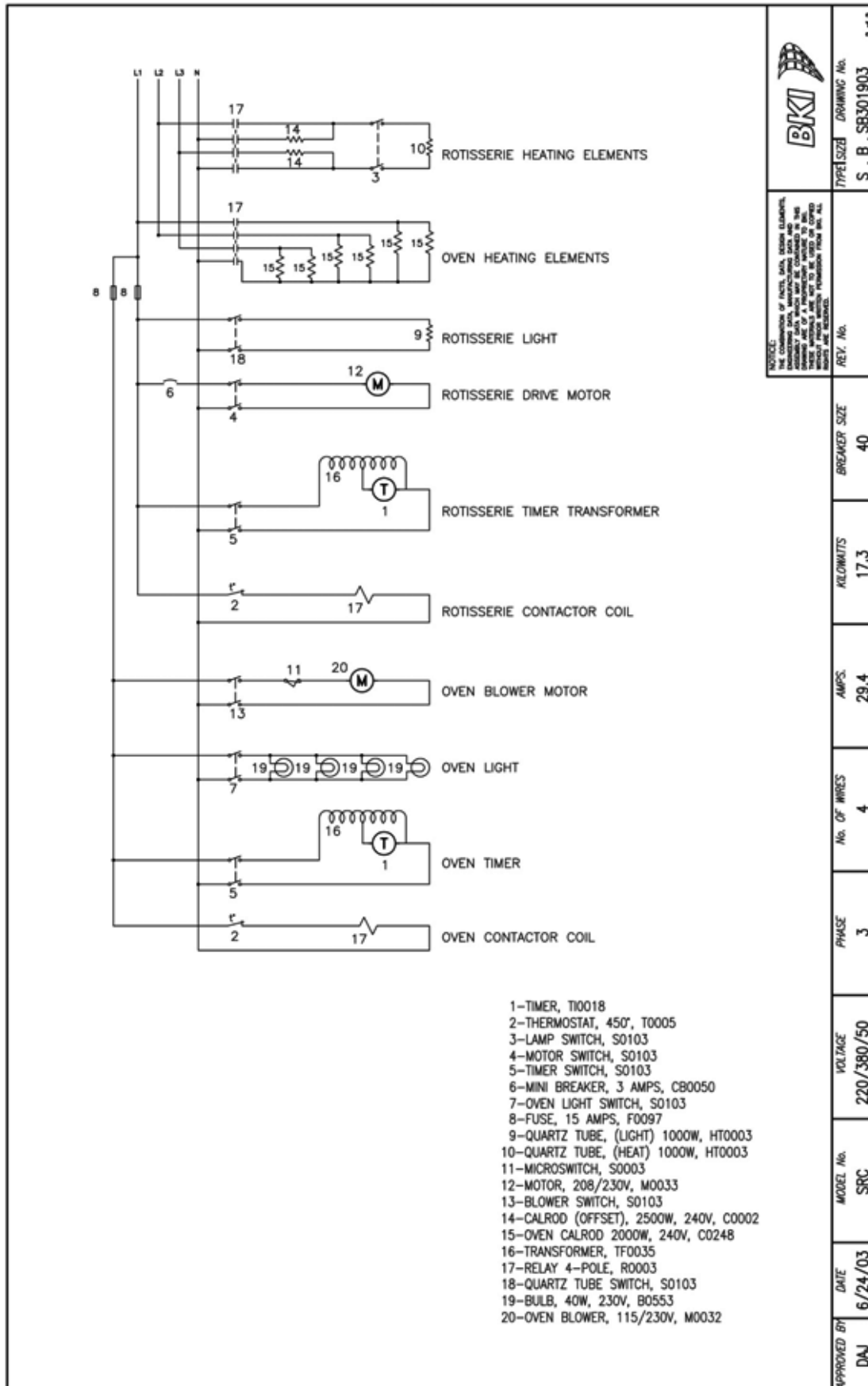
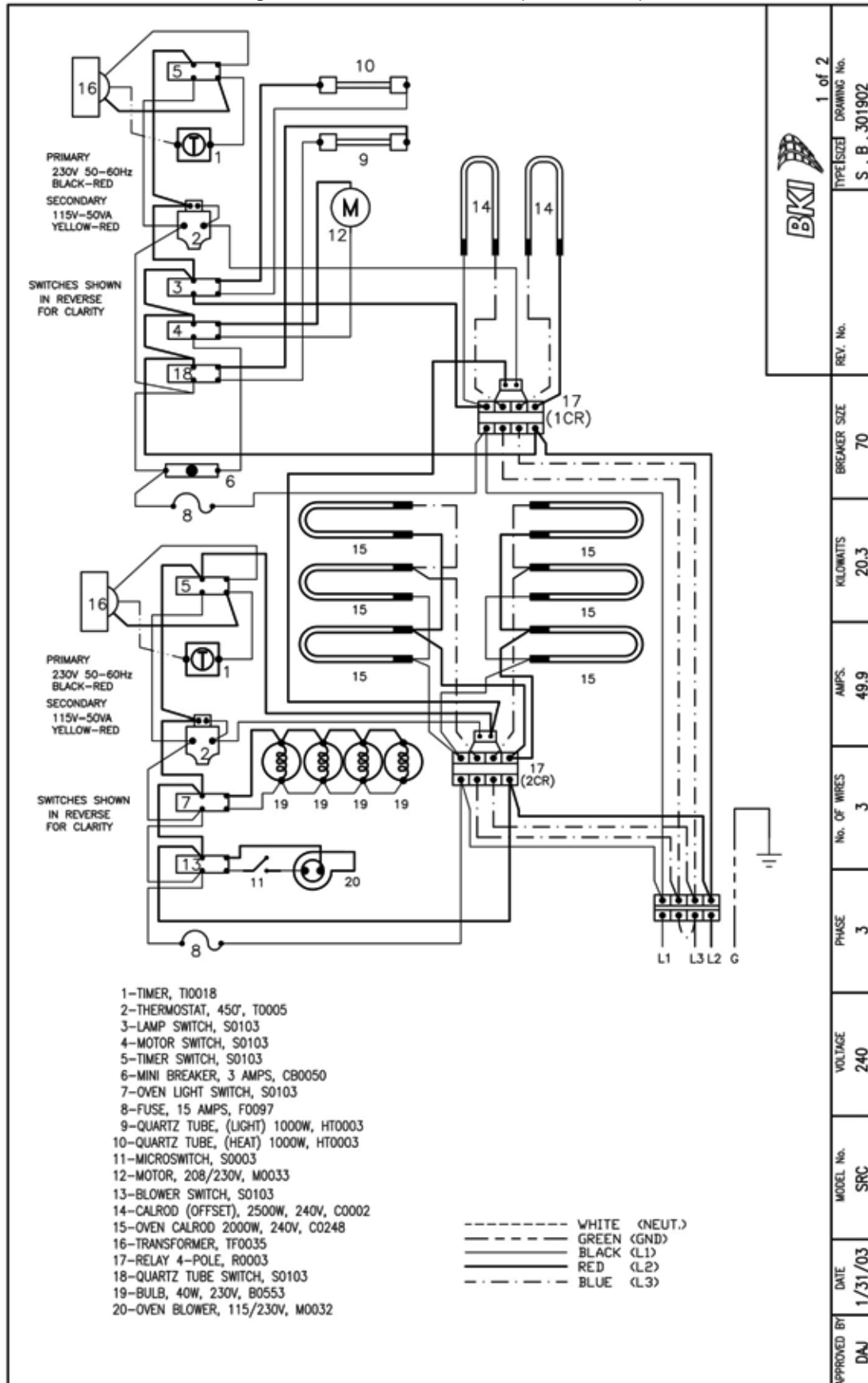


Figure 7. SRC 240V/3 Phase (Sheet 1 of 2)



BKI	1 of 2	REV. No.	BREAKER SIZE	KILOWATTS	AMPS.	No. OF WIRES	PHASE	VOLTAGE	MODEL No.	DATE	APPROVED BY
	DRAWING No.										
											S B 301902

Figure 7. SRC 240V/3 Phase (Sheet 2 of 2)

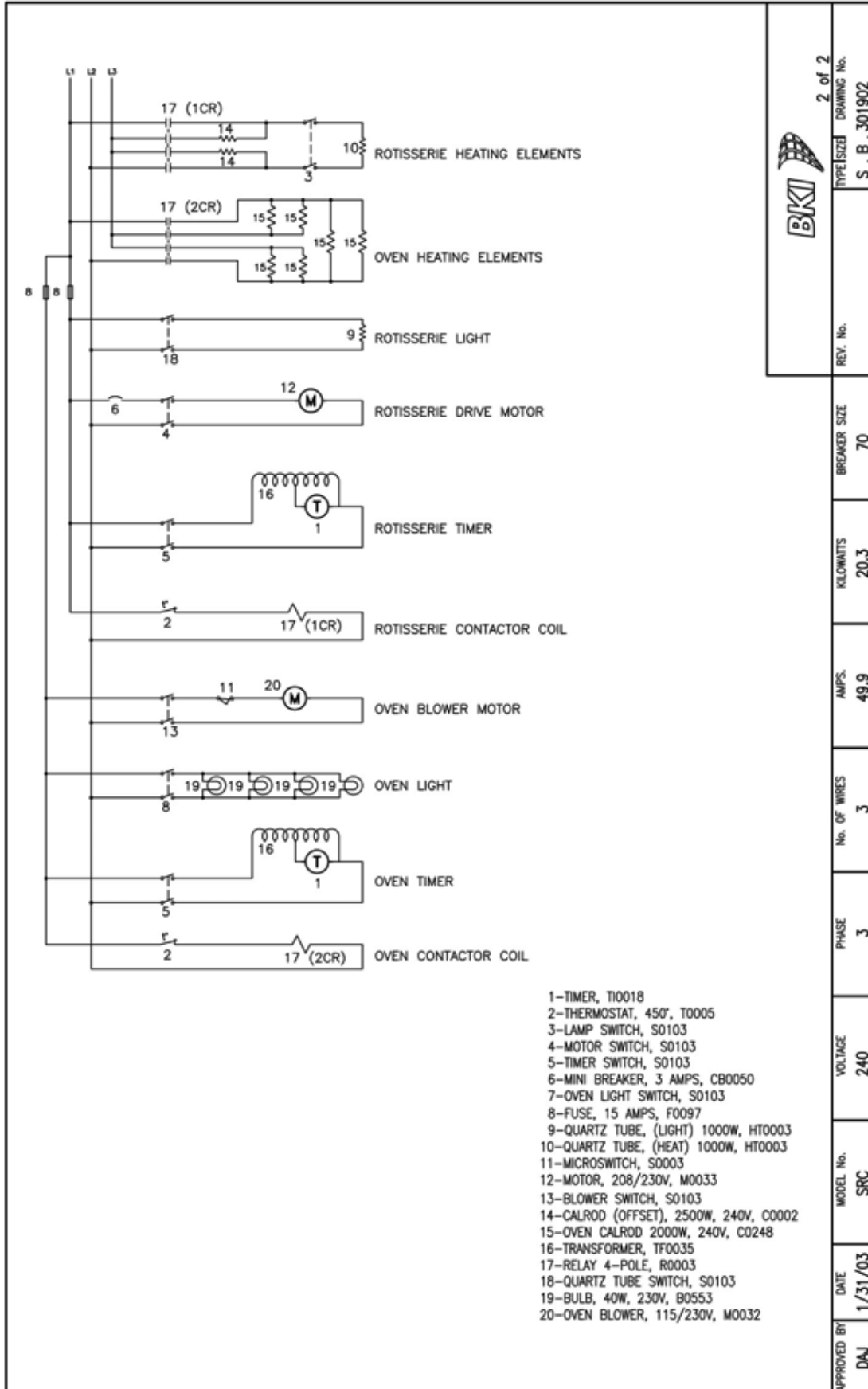


Figure 8. SRW 120V/208V/240V/1-3 Phase

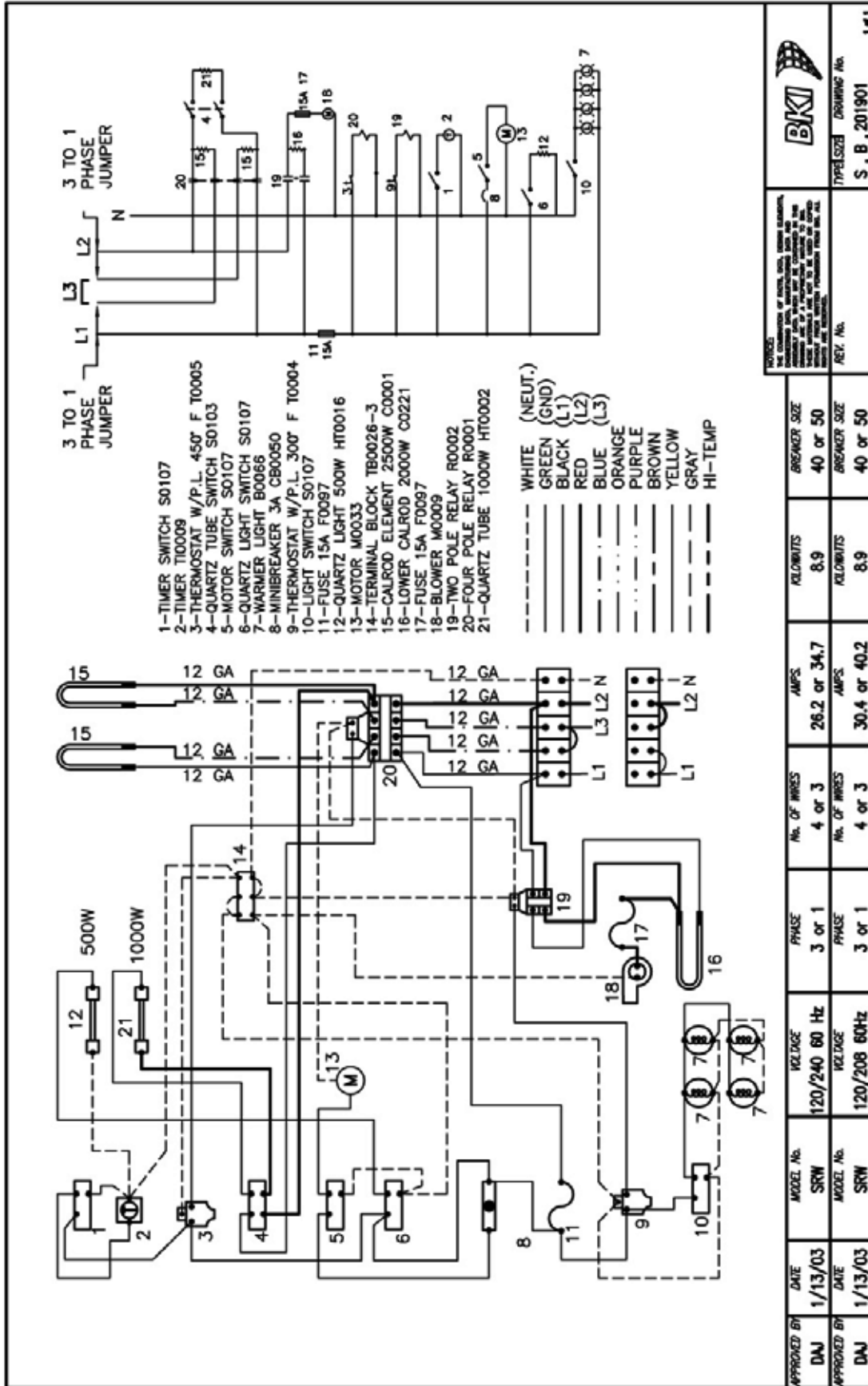


Figure 9. SRW 208V/220V/240V/1-3 Phase

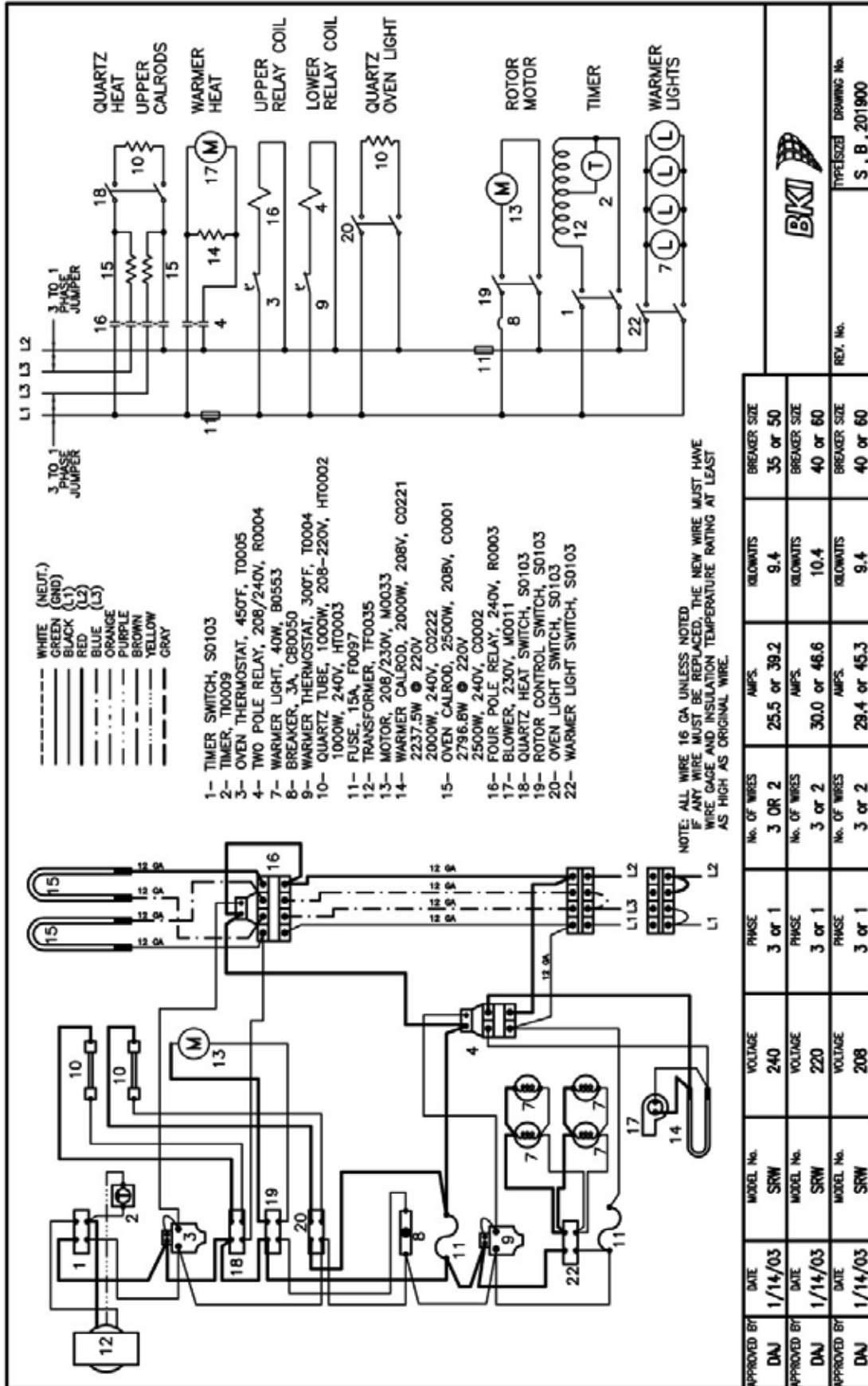




Figure 10. KS 220V/380V/50 HZ/3 Phase

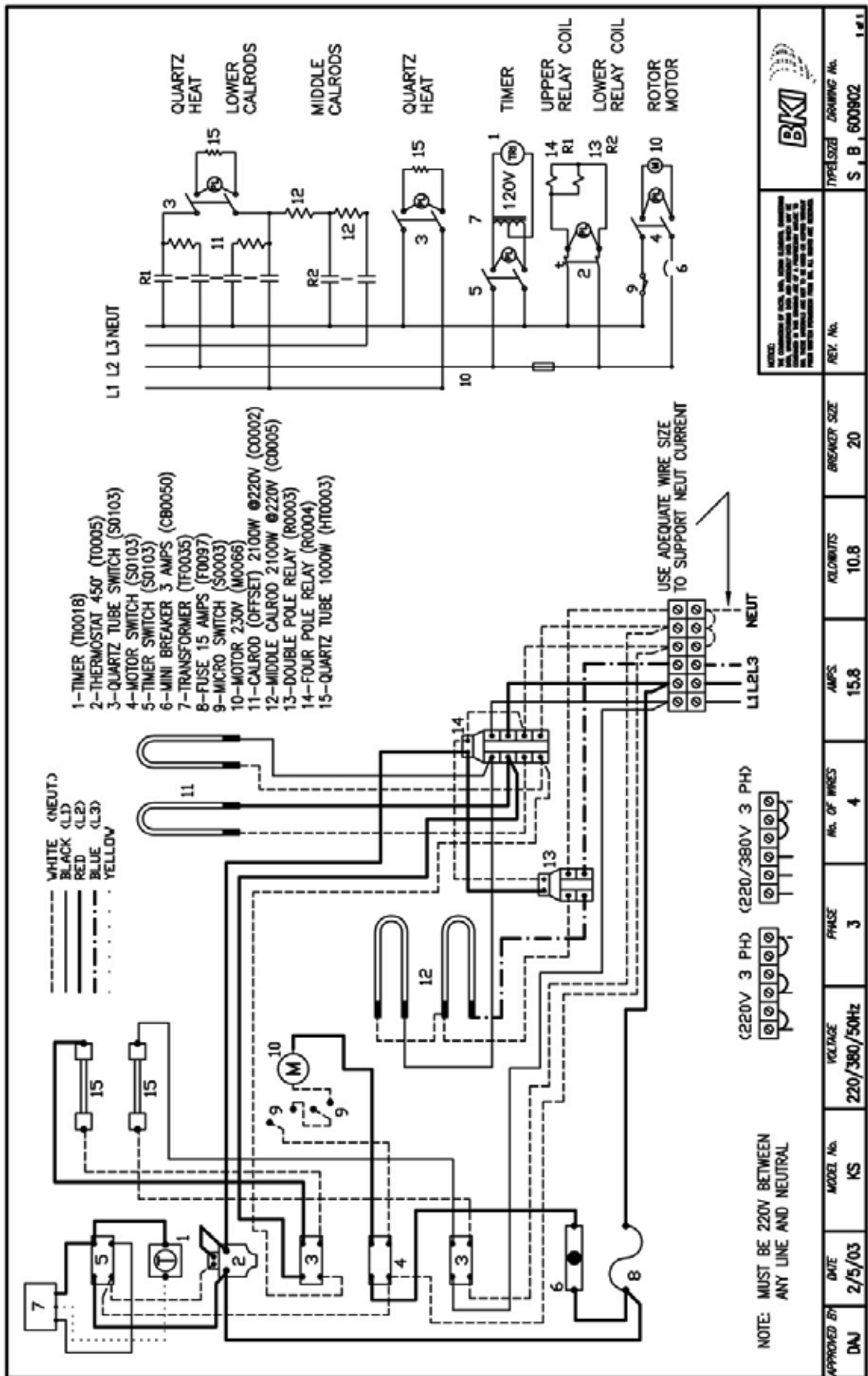


Figure 11. KS 208V/220V/240V/3 Phase

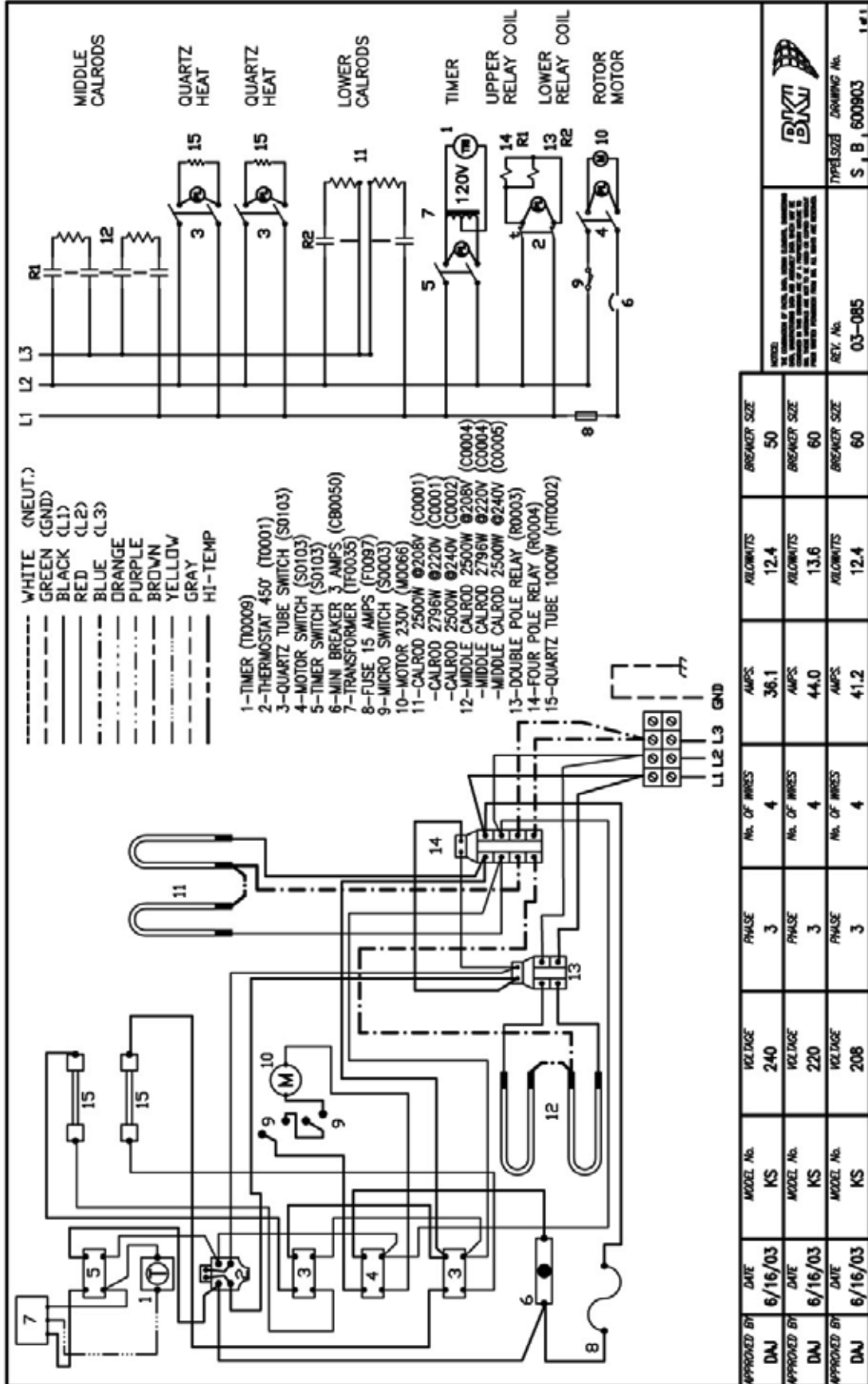


Figure 12. KS 120V/208V and 120V/240V/1-3 Phase

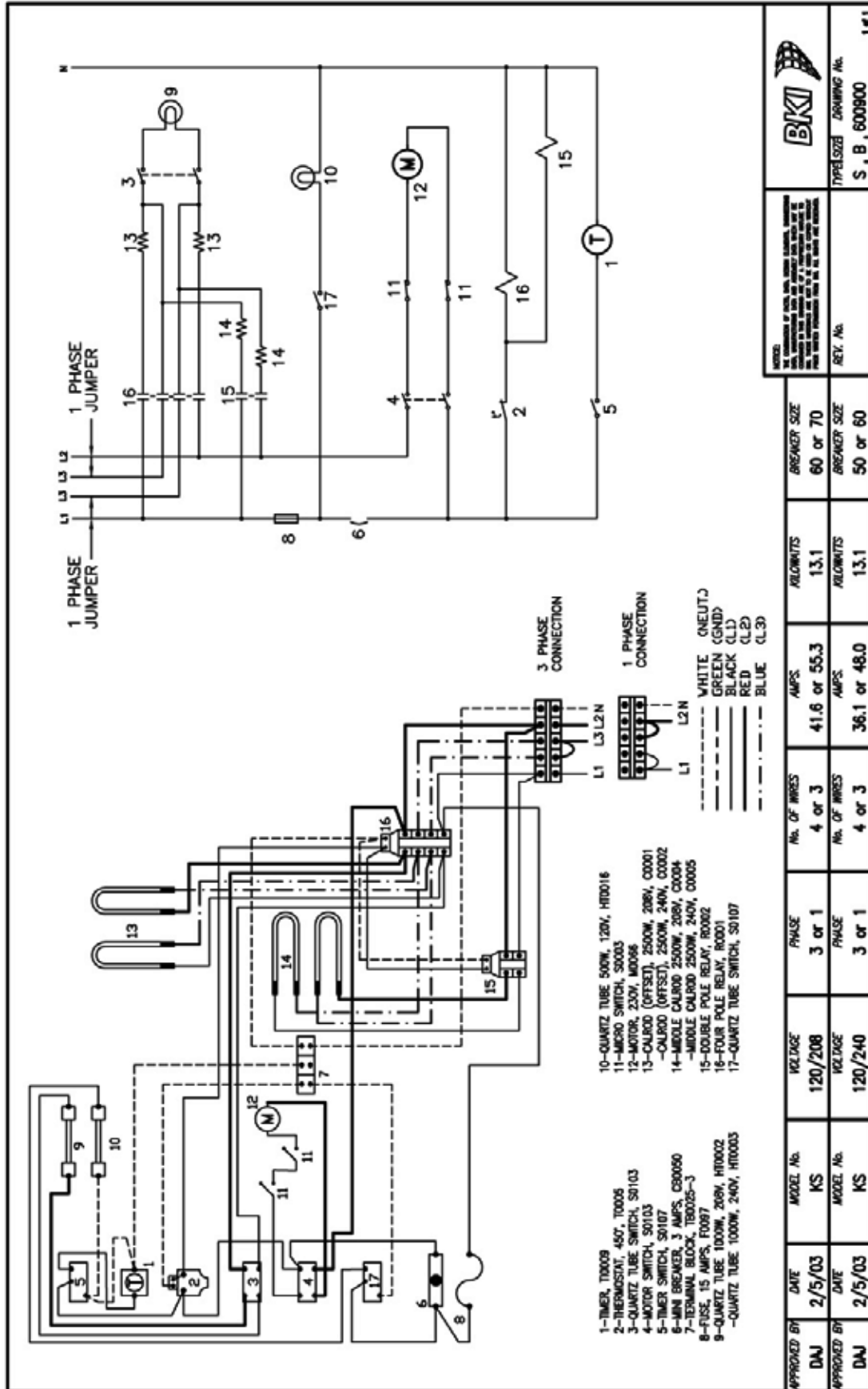


Figure 13. LMWS 120V/208V and 120V/240V/1 Phase

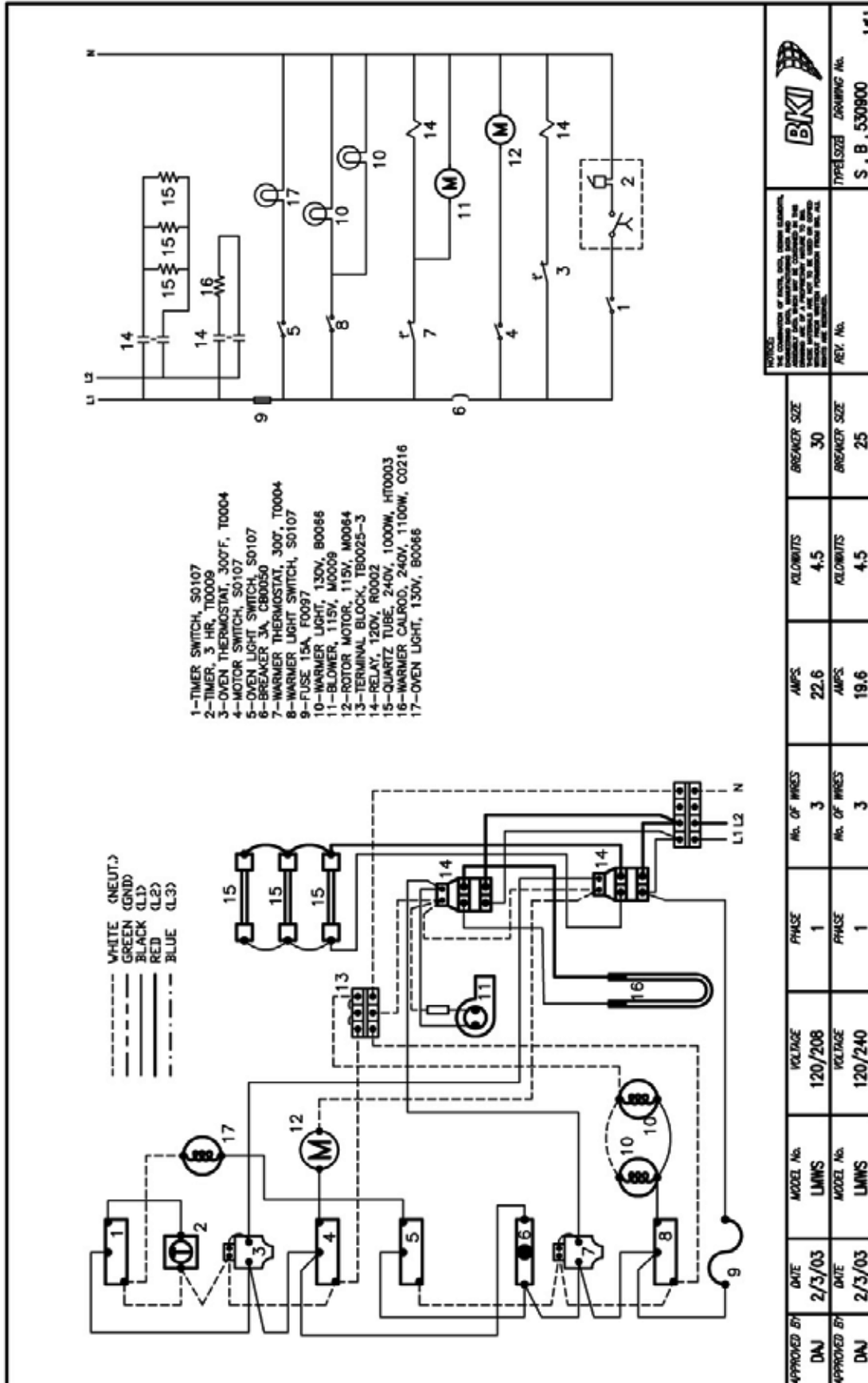


Figure 14. LMWS 120V/208V/60 HZ/3 Phase

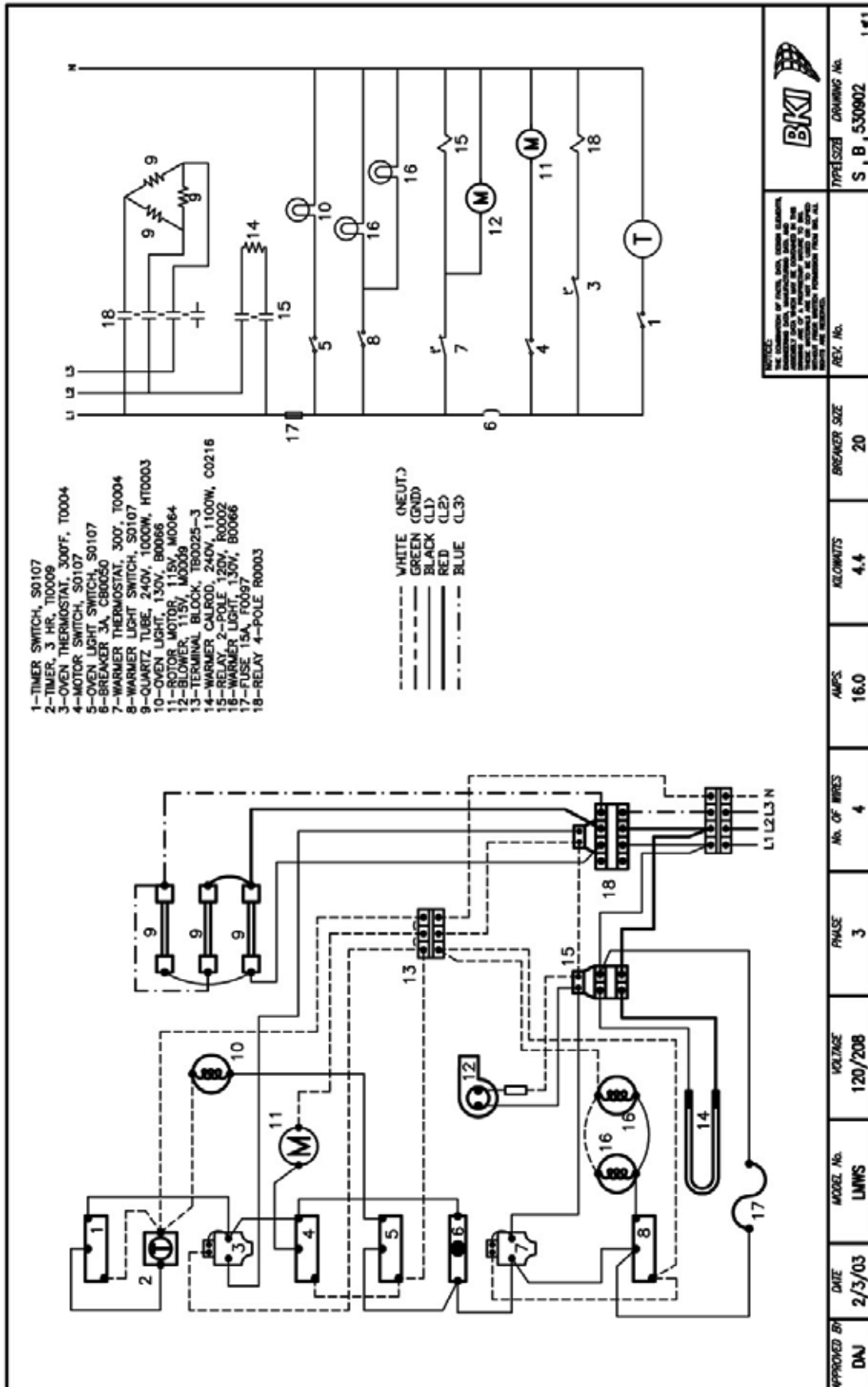


Figure 15. LMWS 208V/220V/230V/1 Phase

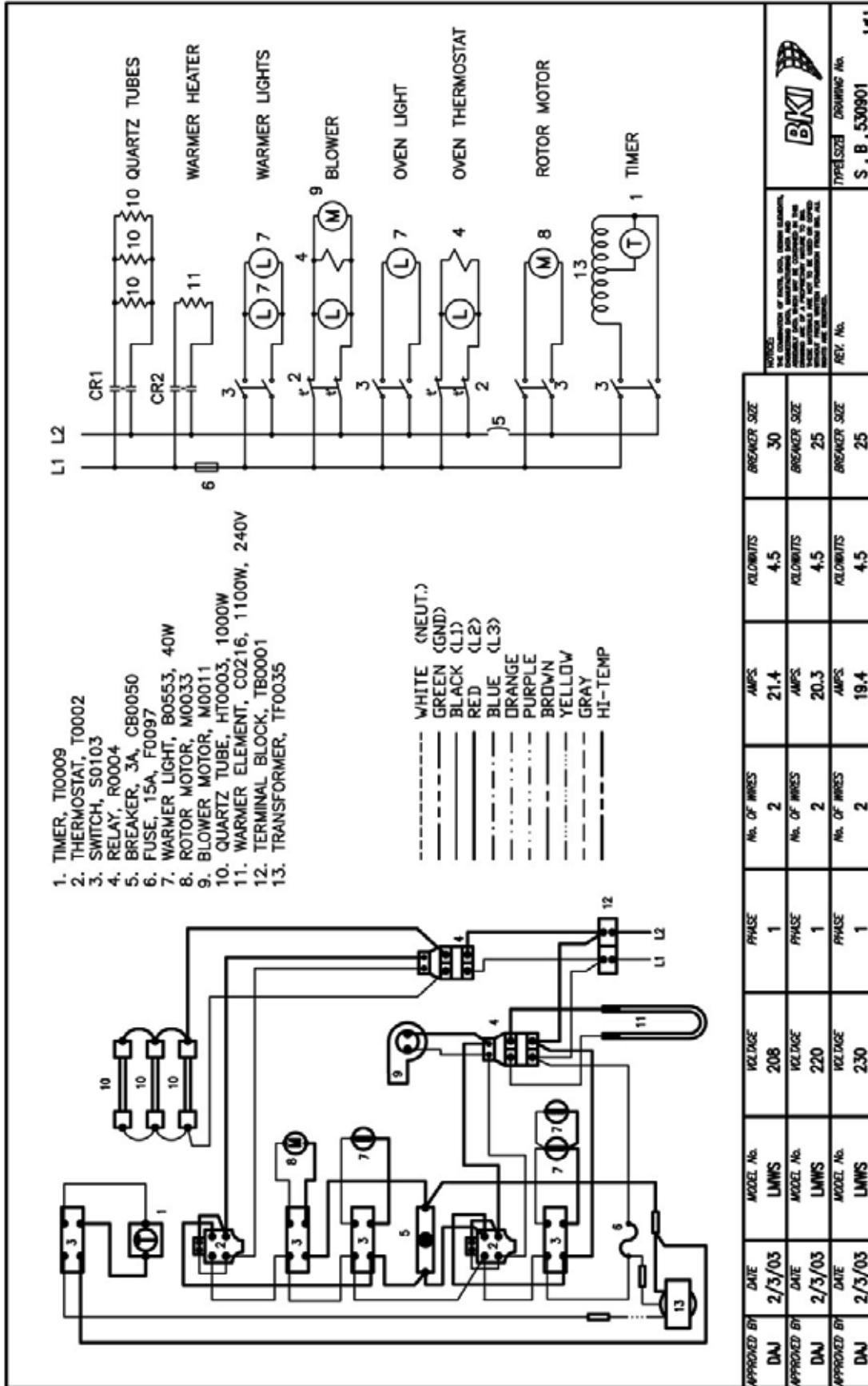
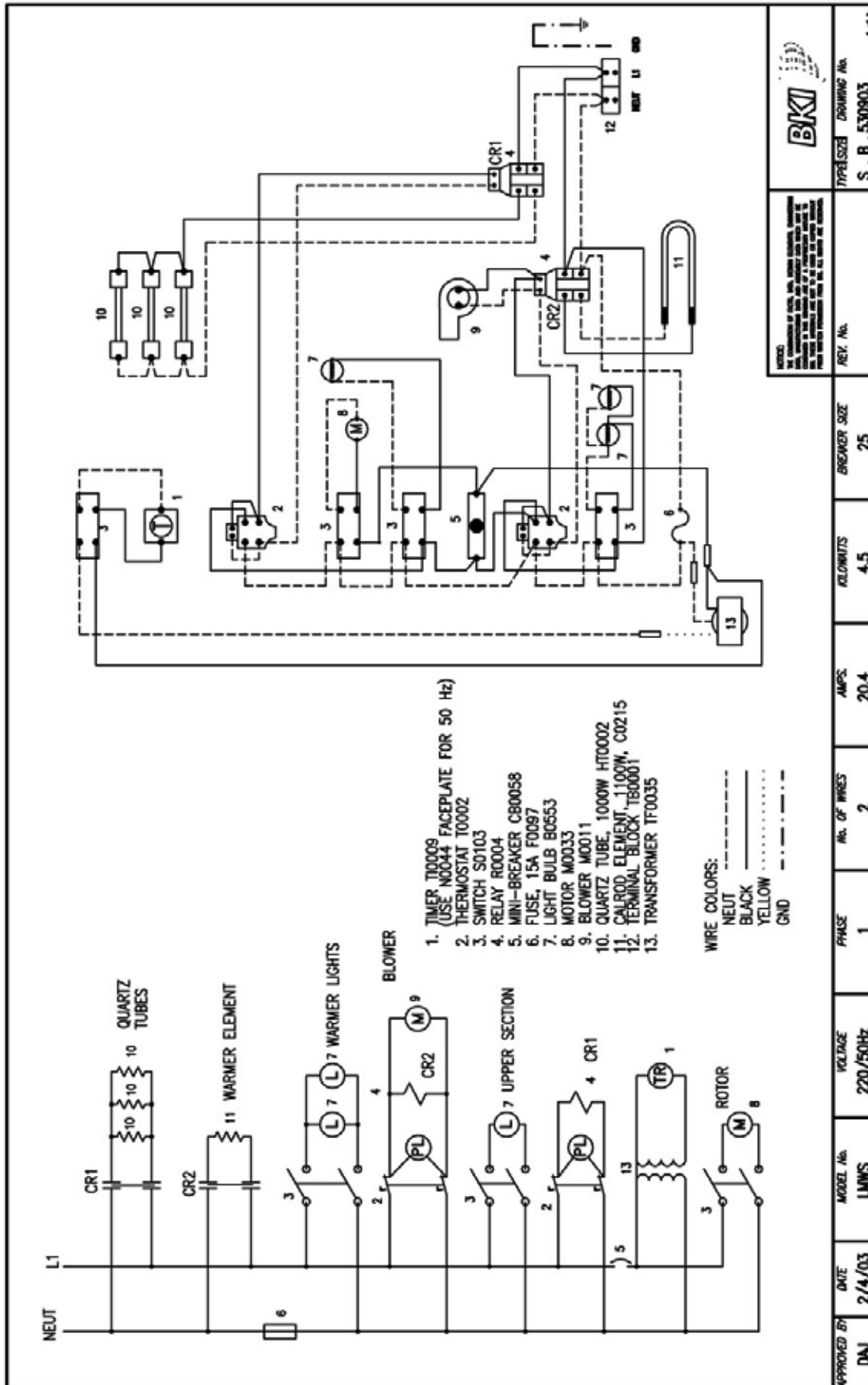


Figure 16. LMWS 220V/50 HZ/1 Phase





P.O. Box 80400, Simpsonville, S.C. 29680-0400, USA  
<http://www.bkideas.com>

Made and printed in the U.S.A  
LI0106/0904