



Warming Stations

Series: WS-13 and WS-15ST(C)

Service Manual



Warranty Information

LIMITED TWO YEAR WARRANTY

BKI (The "Company") warrants to the original purchaser/user, that at time of shipment from the Company factory, this equipment will be free from defect in materials and workmanship. Written notice of a claim under this Warranty must be given within **TWO YEARS AND THREE MONTHS** from date of shipment from the factory. Defective conditions caused by abnormal use or misuse, lack of maintenance, damage by third parties, alterations by unauthorized personnel, acts of God, failure to follow installation instructions or any other events beyond the control of the company will **NOT** be covered under Warranty. The obligation of the Company under this Warranty shall be limited to repairing or replacing (at the option of the company) any part which is defective in reasonable opinion of the Company. The user will have the responsibility of removing and returning the defective part to the Company and installing the replacement part.

IN NO EVENT SHALL THE COMPANY BE LIABLE FOR LOSS OF USE, LOSS OF REVENUE OR LOSS OF PRODUCT OR PROFIT OR FOR INDIRECT OR CONSEQUENTIAL DAMAGES INCLUDING BUT NOT LIMITED TO, FOOD SPOILAGE OR PRODUCT LOSS. WARRANTY DOES NOT COVER GLASS BREAKAGE. THE ABOVE WARRANTY IS EXCLUSIVE AND ALL OTHER WARRANTIES, EXPRESS OR IMPLIED, ARE EXCLUDED INCLUDING THE IMPLIED WARRANTIES OF MERCHANTABILITY AND FITNESS FOR A PARTICULAR PURPOSE. THIS WARRANTY SHALL APPLY ONLY WITHIN THE CONTINENTAL UNITED STATES, ITS TERRITORIES, AND POSSESSIONS AND IN CANADA.

LIMITED TWO YEAR LABOR WARRANTY

All labor necessary to repair or replace factory defective parts will be performed, without charge, to the end user, by service personnel of a **BKI** Authorized Distributor during the first ninety days after the date of installation of the new equipment.

Replacement parts: Any appliance replacement part, except lamps and fuses, which proves to be defective in material or workmanship within 90 days from date of original installation will be repaired or replaced without charge F.O.B. Factory, Simpsonville, S.C. or F.O.B. authorized distributor.

Table of Contents

Table of Contents	3
Introduction	4
Safety Precautions	4
Safety Signs and Messages	4
Safe Work Practices	4
Safety Labels	6
Operation	8
Models	8
Unit Shutdown	8
Operational Guidelines	8
Installation	9
Instructions For Shipping Damage	9
Electrical Information	9
Maintenance	10
Scheduled Maintenance	10
Troubleshooting	11
Repair	11
Replacement Parts	12
WS-13 Wiring Diagram	13
WS-15ST(C)	14
Notes	15

BKI Worldwide is a wholly owned subsidiary of Standex International Corporation.

Introduction

Congratulations! You have chosen a **Warming Station** that will give you many years of fine service from the original manufacturer, **BKI**.

The **BKI** name and trademark on this unit assures you of the finest in design and engineering — that it has been built with care and dedication — using the best materials available. Attention to the operating instructions regarding proper installation, operation, and maintenance will result in long lasting dependability to insure the highest profitable return on your investment.

NOTICE

PLEASE READ THIS ENTIRE MANUAL BEFORE OPERATING THE UNIT. If you have any questions, please contact your **BKI** Distributor. If they are unable to answer your questions, contact the **BKI** Technical Service Department, toll free: 1-800-927-6887. Outside the U.S., call 1-864-963-3471.

Safety Precautions

Always follow recommended safety precautions listed in this manual. Below is the safety alert symbol. When you see this symbol on your equipment, be alert to the potential for personal injury or property damage.



Safety Signs and Messages

The following Safety signs and messages are placed in this manual to provide instructions and identify specific areas where potential hazards exist and special precautions should be taken. Know and understand the meaning of these instructions, signs, and messages. Damage to the equipment, death or serious injury to you or other persons may result if these messages are not followed.

DANGER

This message indicates an imminently hazardous situation that, if not avoided, will result in death or serious injury.

WARNING

This message indicates a potentially hazardous situation, which, if not avoided, could result in death or serious injury.

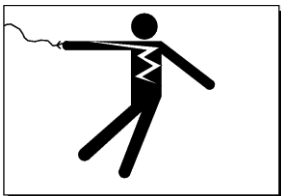
CAUTION

This message indicates a potentially hazardous situation, which, if not avoided, may result in minor or moderate injury. It may also be used to alert against unsafe practices.

NOTICE

This message is used when special information, instructions or identification are required relating to procedures, equipment, tools, capacities and other special data.

Safe Work Practices



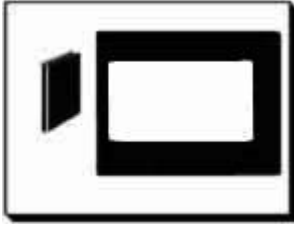
Beware of High Voltage

This equipment uses high voltage. Serious injury can occur if you or any untrained or unauthorized person installs, services, or repairs this equipment. Always Use an Authorized Service agent to Service Your Equipment.

WARNING

California Residents Only. This product can expose you to chemicals including chromium, and lead which are known to the State of California to cause cancer and birth defects or other reproductive harm. For more information go to www.P65Warnings.ca.gov.

Warming Station



Keep this manual with the Equipment

This manual is an important part of your equipment. Always keep it near for easy access. If you need to replace this manual, contact:

BKI

Technical Services Department
2812 Grandview Drive
Simpsonville, S.C. 29681
Or call toll free: 1-800-927-6887
Outside the U.S., call 864-963-3471



Protect Children

Keep children away from this equipment. Children may not understand that this equipment is dangerous for them and others.

NEVER allow children to play near or operate your equipment.

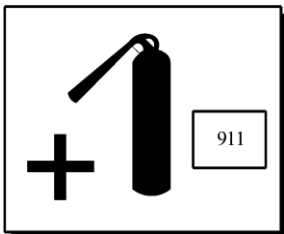


Keep Safety Labels Clean and in Good Condition

Do not remove or cover any safety labels on your equipment. Keep all safety labels clean and in good condition. Replace any damaged or missing safety labels. Refer to the Safety Labels section for illustration and location of safety labels on this unit. If you need a new safety label, obtain the number of the specific label illustrated on page 6, then contact:

BKI

Technical Services Department
2812 Grandview Drive
Simpsonville, S.C. 29681
Or call toll free: 1-800-927-6887
Outside the U.S., call 864-963-3471

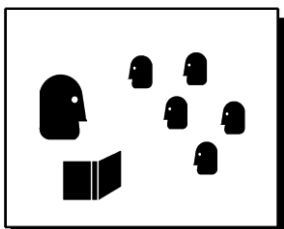


Be Prepared for Emergencies

Be prepared for fires, injuries, or other emergencies.

Keep a first aid kit and a fire extinguisher near the equipment. You must use a 40-pound Type BC fire extinguisher and keep it within 25 feet of your equipment.

Keep emergency numbers for doctors, ambulance services, hospitals, and the fire department near your telephone.



Know your responsibilities as an Employer

- Make certain your employees know how to operate the equipment.
- Make certain your employees are aware of the safety precautions on the equipment and in this manual.
- Make certain that you have thoroughly trained your employees about operating the equipment safely.
- Make certain the equipment is in proper working condition. If you make unauthorized modifications to the equipment, you will reduce the function and safety of the equipment.

Warming Station

Safety Labels

Models WS-13



On Back of Unit



Warming Station

Model WS-15ST(C)

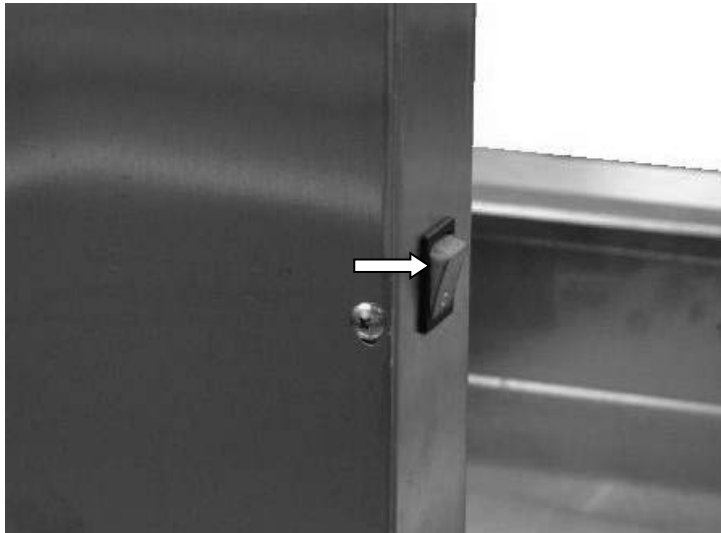


Operation

Models

Once the unit is plugged in to the appropriate receptacle with the appropriate overcurrent protection (see rating tag), press the “I” portion of the power switch. Switch will illuminate, and the unit will begin to heat.

IMPORTANT: Allow 20 minutes to preheat before loading product into Warming Station.



Unit Shutdown

1. Press the “O” portion of the power switch.
2. Allow the equipment to cool to room temperature.

Operational Guidelines

- Foods should be a minimum of 160° F. before being placed in the warmer.
- Foods loaded in first should be served first as much as is practical.
- Check Federal and State Health and Sanitation Regulations for internal temperature required for holding cooked foods for sale. Maintaining these temperatures often tends to continue to cook certain products. Therefore, smaller amounts of bulk foods should be displayed at non-peak periods and the warmer refilled as needed.
- **For WS-15ST(C) Models Only:** Top swivels to allow room to dump product into pan.



NOTICE

This equipment is designed to hold foods for a short period of time only.

Installation



⚠ **WARNING** Serious injury, equipment damage or death could result if attempting to install this unit yourself. Ensure that an authorized BKI service agent installs the unit.

Instructions for Shipping Damage

You are responsible for filing all freight claims with the delivering truck line. Inspect all cartons and crates for damage when they arrive. If there is damage noted to shipping crates or cartons, or, if a shortage is found, note this on the bill of lading (all copies) before signing.

If damage is detected when the equipment is uncrated, immediately call the delivering truck line and follow up the call with a written report indicating concealed damage to your equipment. Ask for an immediate inspection of your concealed damage item. Crating material **MUST** be retained to show the inspector from the truck line.

Electrical Information



⚠ **WARNING** Electrocutation, equipment failure or property damage could result if an unlicensed electrician performs the electrical installation. Ensure that a licensed electrician perform the electrical installation in accordance with local codes, or in the absence of local codes, with the National Electrical Code, ANSI NFPA 70-20XX.

This unit, when installed by an authorized BKI service agent, must be wired for use in accordance with all applicable local, state, and federal codes. For specific electrical requirements and connections refer to the wiring diagram attached to the unit or provided in the Service Manual.

Maintenance

⚠ CAUTION Failure to comply with the maintenance below could result in a serious accident.

⚠ WARNING Electrocutation, equipment failure or property damage could result if an unlicensed electrician performs electrical repair. Ensure that a licensed electrician performs electrical repair.

Scheduled Maintenance

This unit should be cleaned at the end of each working day. Use the following procedure:

⚠ DANGER Failure to remove power from this unit may cause severe electrical shock. This unit may have more than one disconnect switch.

⚠ CAUTION Never use abrasive cleaners that may damage the finish.

Never steam clean the interior.

Avoid getting excess water in the interior of the unit.

Do not leave this unit on and unattended after business hours.

1. Remove all food from the unit.
2. Remove power from the unit by following the shutdown procedures in the Operation section.
3. Allow the equipment to cool to room temperature.
4. Sponge the inside and outside of the unit with a mild soap and water solution, being sure to clean all areas. Avoid getting water in the interior of the unit.
5. Wipe the parts and unit dry with a soft, clean cloth.

Warming Station

Troubleshooting

Problem	Cause	Possible Solution
Unit will not turn on.	Power cords not connected or circuit breaker supplying power to the unit has tripped.	Make sure power cords are connected and circuit breaker is on. If problem persists, contact a licensed electrician.
Product is not holding its temperature	Product temperature is too low when loaded. Or Faulty component in heating circuit	Make sure product is above 160° F when loaded. Contact an authorized BKI service agent for corrective action.
Unit is not heating	No power to unit Or Faulty component in heating circuit.	Make sure power cords are connected and circuit breaker is on. If problem persists, contact licensed electrician. Contact an authorized BKI service agent for corrective action.


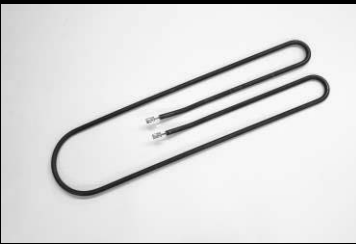


Repair

NOTICE

Before replacing any parts, make sure the power has been turned off and the unit has cooled down.

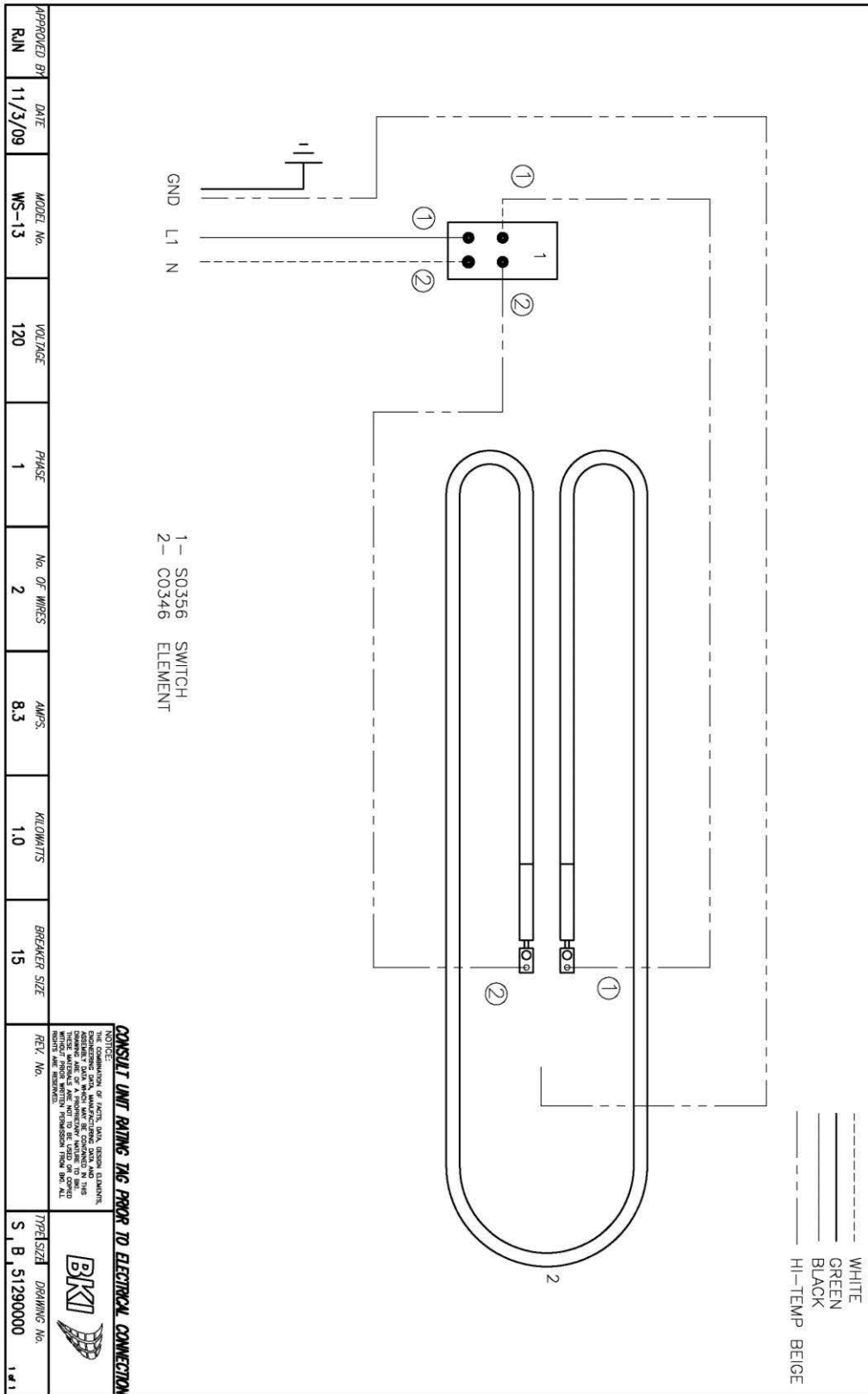
Warming Station

Replacement Parts

Part #	Description	Picture
CS0005	Cord Set For WS-13 & WS-15ST(C)	
C0346	Element – Top Heat For WS-13 & WS-15ST(C)	
S0356	Power Switch For WS-13 & WS-15ST(C)	
C0348	Foil Element – Bottom Heat For WS-15ST(C) Only	

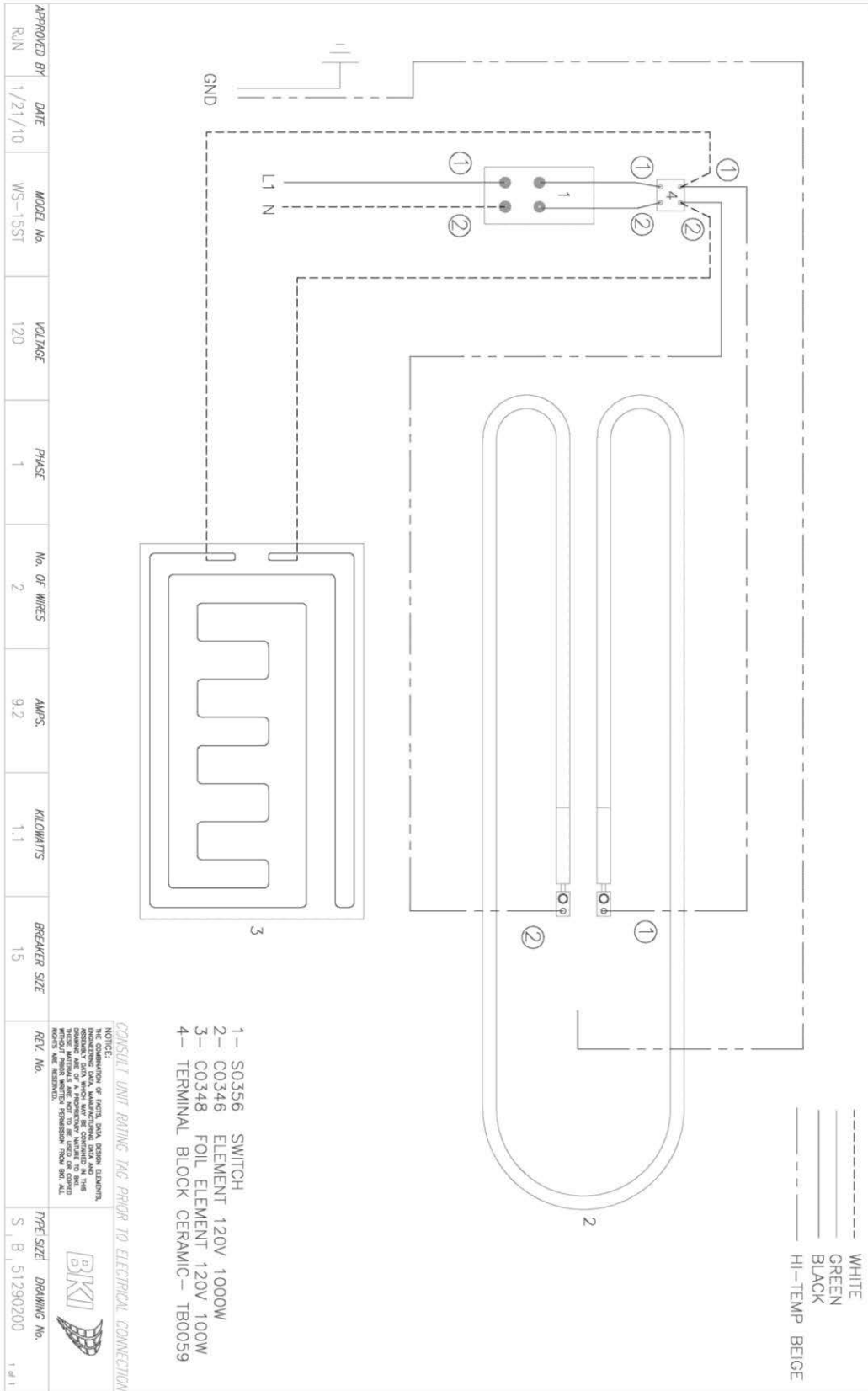
Warming Station

WS-13 Wiring Diagram



Warming Station

WS-15ST(C) Wiring Diagram



Notes



2812 Grandview Drive, Simpsonville, S.C. 29681, USA
<http://www.bkideas.com>

Made and printed in the U.S.A
LI0174/0704

CS-TM-065.01

01/23/2019