



729 Third Avenue  
Dallas, TX 75226

# SHFW-2, -3, -4, -5, -6

Small Body & Bezel Insulated Top Mount  
Hot Food Wells - Thermostatic Models

Phone: (214) 421-7366  
Fax: (214) 565-0976  
Toll Free: (800) 527-2100  
Website: [www.apwwyott.com](http://www.apwwyott.com)  
E-mail: [info@apwwyott.com](mailto:info@apwwyott.com)

## REPLACEMENT PARTS CATALOG & WIRING DIAGRAM

Model	Part Number	Voltage	Wattage
SHFW-2	WHFW24B001	208 / 240V	1200 / 1600W
SHFW-2D	WHFW2D4B001	208 / 240V	1200 / 1600W
SHFW-3	WHFW34B001	208 / 240V	1200 / 1600W
SHFW-3D	WHFW3D4B001	208 / 240V	1200 / 1600W
SHFW-4	WHFW44B001	208 / 240V	1200 / 1600W
SHFW-4D	WHFW4D4B001	208 / 240V	1200 / 1600W
SHFW-5	WHFW54B001	208 / 240V	1200 / 1600W
SHFW-5D	WHFW5D4B001	208 / 240V	1200 / 1600W
SHFW-6	WHFW64B001	208 / 240V	1200 / 1600W
SHFW-6D	WHFW6D4B001	208 / 240V	1200 / 1600W





729 Third Avenue  
Dallas, TX 75226

# SHFW-2, -3, -4, -5, -6

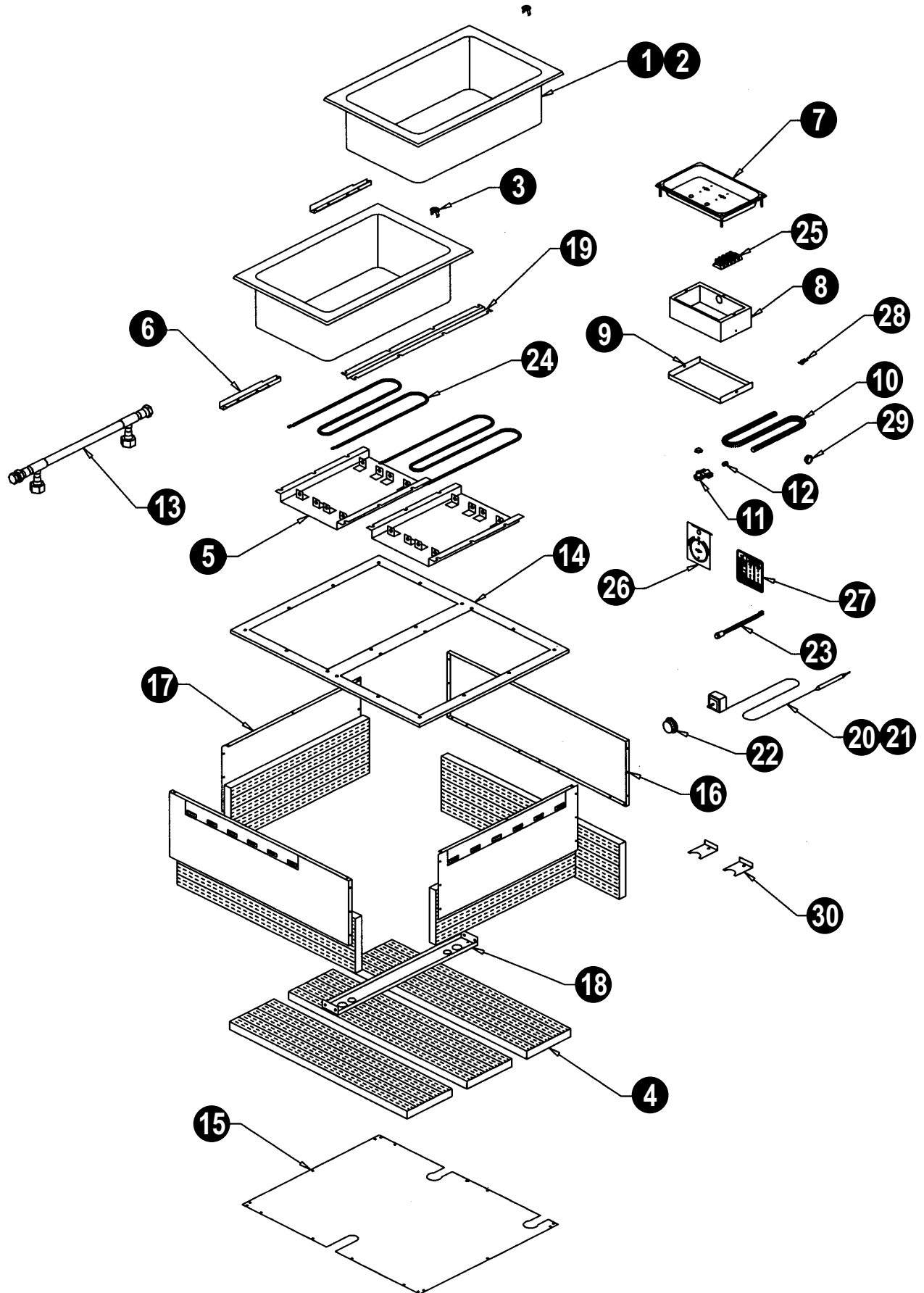
**Small Body & Bezel Insulated Top Mount Hot Food Wells - Thermostatic Models (With or Without Suffix D)**

Phone: (214) 421-7366  
 Fax: (214) 565-0976  
 Toll Free: (800) 527-2100  
 Website: www.apwwyott.com  
 E-mail: info@apwwyott.com

Item	Part No.	Description	Item	Part No.	Description
1	55071	WELL PAN NO DRAIN		57364	6 WELL BOTTOM COVER
2	56037	WELL PAN WITH DRAIN	16	57254	2 WELL FRONT OR BACK COVER
3	56655	DRAIN STRAINER		57262	3 WELL FRONT OR BACK COVER
4	60150	1" X 7" X 48" INSULATION		57266	4 WELL FRONT OR BACK COVER
5	56506	REFLECTOR PAN		57292	5 WELL FRONT OR BACK COVER
6	56039	CAPILLARY COVER FOR T'STATS		57365	6 WELL FRONT OR BACK COVER
7	54503	CONTROL BEZEL 12.5" WIDE	17	56050	END COVER
	54520	CONTROL BEZEL 16.5" WIDE	18	56048	CONDUIT BRACE
8	54504	CONDUIT BOX 12.5" WIDE	19	57264	WELL BRACE
	54522	CONDUIT BOX 16.5" WIDE	20	56527	THERMOSTAT 36" CAPILLARY
9	_____	_____	21	56540	THERMOSTAT 72" CAPILLARY
10	55099	¾" CONDUIT 24" LONG	22	56505	KNOB, THERMOSTAT
11	55058	90° CONDUIT CONNECTOR	23	56530	INDICATOR LIGHT
12	55059	ANTI-SHORT BUSHING	24	55441	HEATING ELEMENT 208/240V, 1200/1600W
13	57332	2 WELL DRAIN MANIFOLD		54051	HEATING ELEMENT 208V, 1200W
	57333	3 WELL DRAIN MANIFOLD	25	30201	TERMINAL BLOCK
	57334	4 WELL DRAIN MANIFOLD	26	56529	INCREASE/DECREASE PLATE
	57335	5 WELL DRAIN MANIFOLD	27	56542	DIAL PLATE
	57336	6 WELL DRAIN MANIFOLD	28	89120	JIFFY CLIP
14	57252	2 WELL TOP PLATE	29	89184	7/8" HOLE BUSHING
	57260	3 WELL TOP PLATE	30	55062	HOLE COVER
	57263	4 WELL TOP PLATE	<b>NOT SHOWN</b>		
	57290	5 WELL TOP PLATE		89025	10-24 SPEED NUT
	57363	6 WELL TOP PLATE		89071	#10 FLAT WASHER
15	57253	2 WELL BOTTOM COVER		89061	10-24 HEX NUT
	57261	3 WELL BOTTOM COVER		88961	10-24 HEX NUT, GREEN-GROUND
	57265	4 WELL BOTTOM COVER		88993	10-32 X 3/8 TRUSS HEAD SCREW
	57291	5 WELL BOTTOM COVER		89068	¼" FLAT WASHER
				89059	#10 EXTERNAL LOCKWASHER
				89073	#8 X 1/2 SHEET METAL SCREW

# EXPLODED VIEW

# SHFW-2, -3, -4, -5, -6



# SHFW-2/6 WIRING DIAGRAM

# CAP BULB THERMOSTAT CONFIGURATION

