



**COS-5HA
HATCHABLE COMBI OVEN
REPLACEMENT PARTS LIST**

EFFECTIVE FEBRUARY 22, 2012

Superseding All Previous Parts Lists.
The Company reserves the right to make substitution in the event that items specified are not available.
ERRORS: Descriptive and/or typographic errors are subject to correction.

BLODGETT OVEN COMPANY
44 Lakeside Avenue, Burlington, Vermont 05401 USA Telephone: (802) 658-6600 Fax: (802) 860-3732
www.blodgett.com

P/N R11326 Rev G

SERIAL NUMBER LOCATION / KEY:

IMPORTANT: When ordering parts, please provide the model, gas type, voltage and serial number of the oven. The identification plate is located on the front side of the control compartment.

SERIAL NUMBERS CONTAINING:

JR

JS

EXAMPLE:

030102JR023T OR

030102JS023T

Ovens shipped after 1/1/2002 (designated COS-5HA)

TO OBTAIN LITERATURE:

Email: literature@blodgett.com

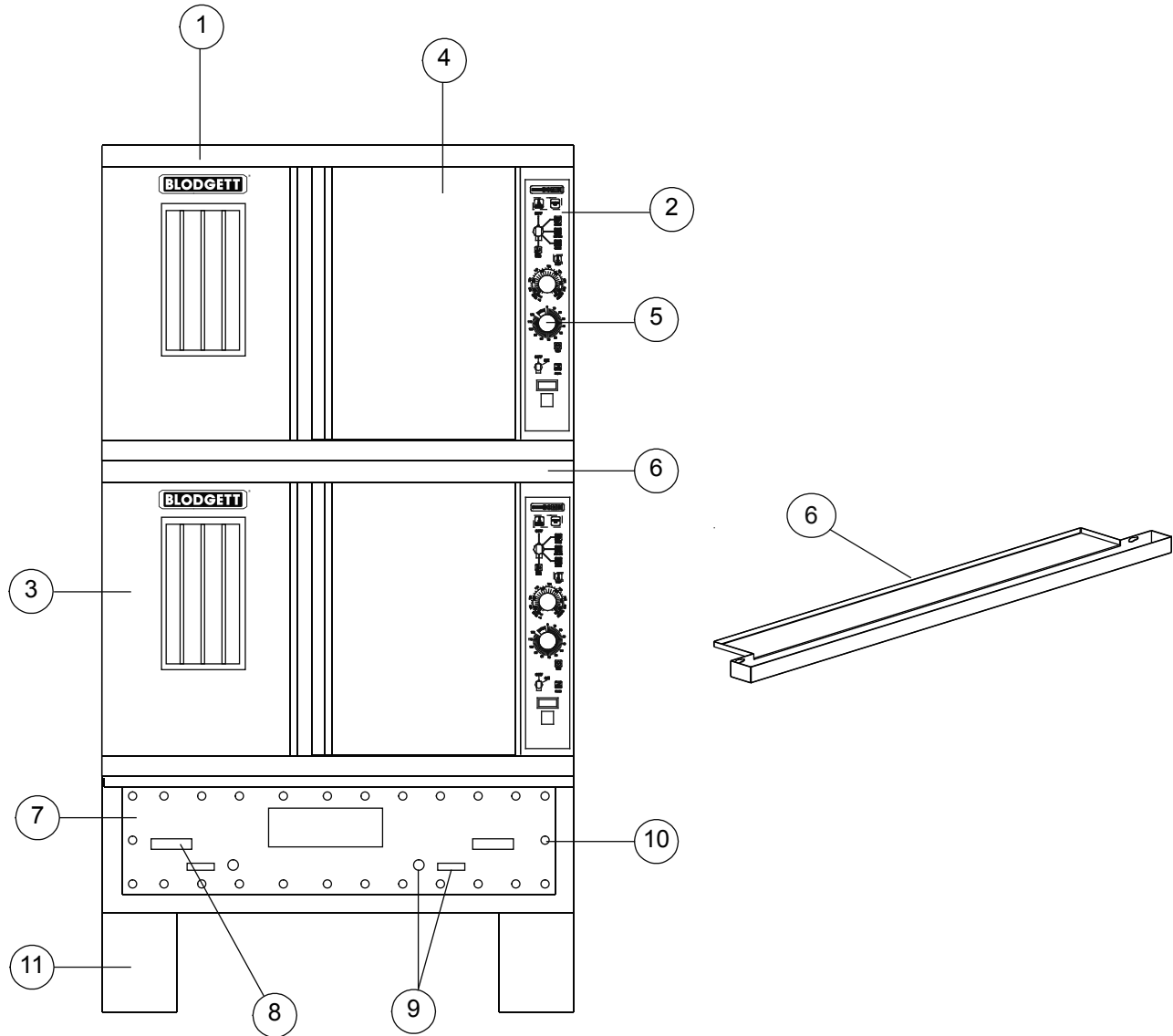
or visit

www.blodgett.com

TABLE OF CONTENTS

EXTERIOR COMPONENTS	PAGE 4
OVEN CONTROLS.....	PAGE 5
DOOR COMPONENTS.....	PAGE 6
ELECTRIC & STEAM SUPPLY	PAGE 10
MOTOR & HOT AIR ELEMENTS	PAGE 11
INTERIOR COMPONENTS	PAGE 12
SLIDE TRAY COMPONENTS	PAGE 13
DELIMITING HAND PUMP COMPONENTS	PAGE 14
INSTALLATION BASE COMPONENTS	PAGE 15
PLUMBING & VENTING COMPONENTS	PAGE 16
SCHEMATICS	PAGE 17

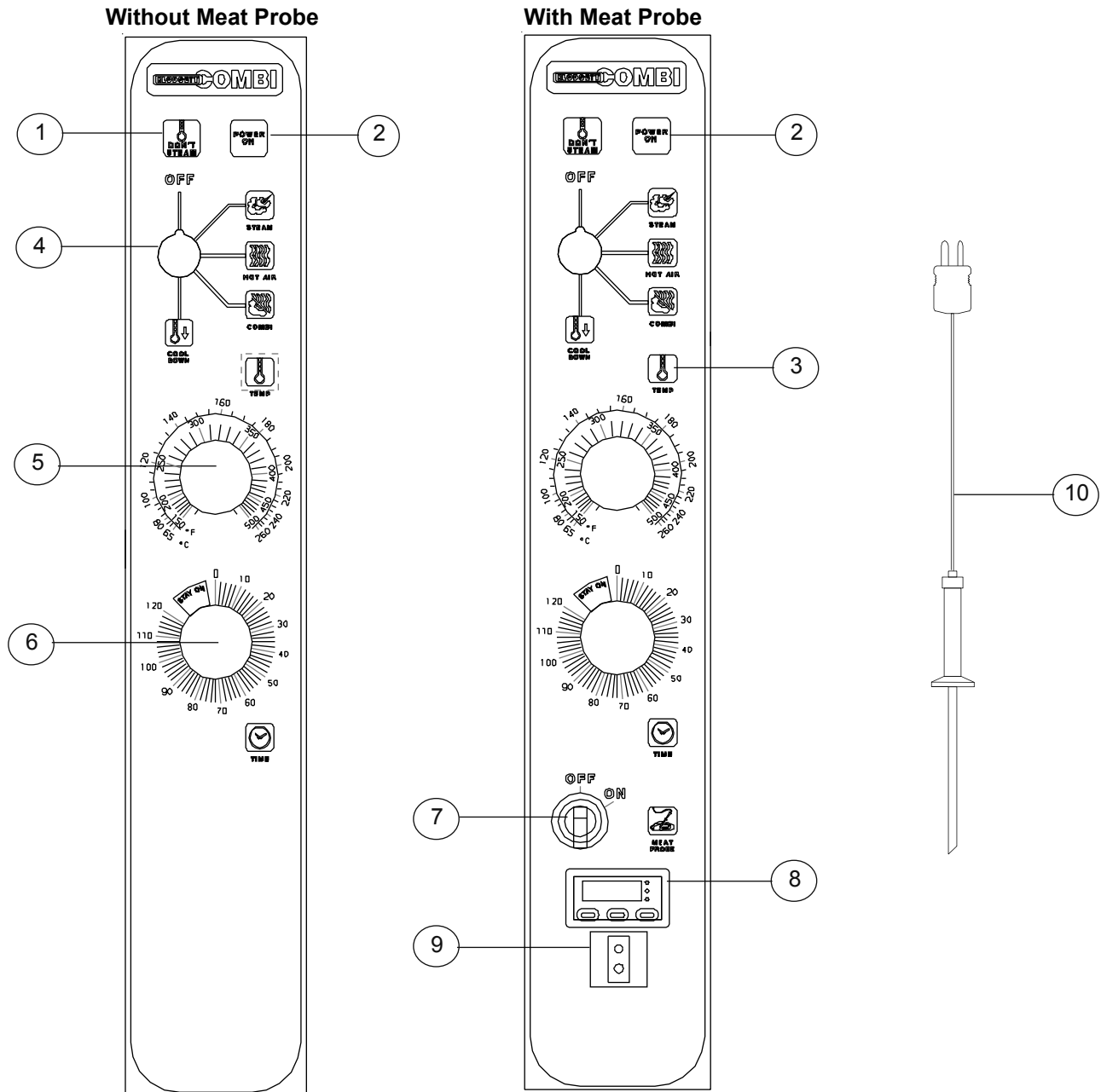
EXTERIOR COMPONENTS



Ref. No.	Part No.	Description
1	R11290	Body top, top section s/s
	R10044	Body top, botm/base sections s/s
	R10250	Crown, trim piece, top section s/s
2	R7564	Body side, RH
3	R10811	Door assy, LH Solid
	R10810	Door assy, LH Glass
4	R10528	Door assy, RH Solid
5	R7046	Control panel w/mp
	R7471	Control panel w/o mp
6	R7033	Drip pan
7	R11037	Slide tray, assembled
	R11274	Cover, slide tray
	R11308	Cover, access
	R4872	Gasket, cover slide tray (per foot)

Ref. No.	Part No.	Description
8	R4413	Handle, slide tray
9	R3011	Cap, delimiting
	R2998	Decalcifier, inlet threaded
	R2895	Handle, valve decalcifier
	R10215	Valve, decalcifier with fittings
	R3042	Washer, plastic
	R11277	Bracket, delimiting ball valve
	R2812	Hose
10	16384	Screw, cover slide tray
11	R7882	Install base, 18" leg option
	R7876	Install base, 14" leg option
	R7875	Install base, 8" leg option
	R7881	Install base, 6" leg option
	R7596	Install base, floor option

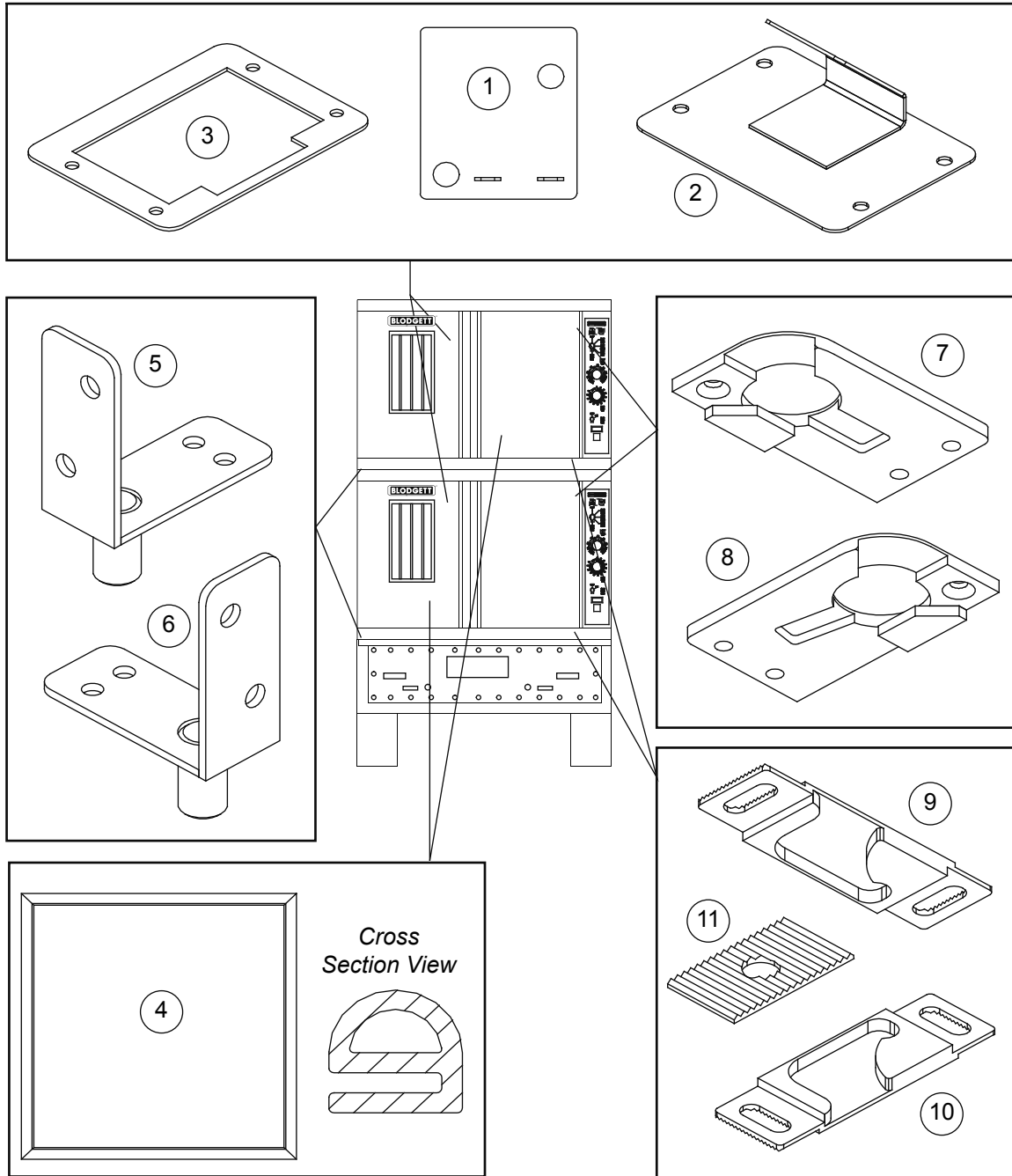
OVEN CONTROLS



Ref. No.	Part No.	Description
	R7450	Decal, standard with out meat probe
	R7027	Decal, standard with meat probe
1	R0226	Indicator light, clear "Don't Steam"
2	R1318	Indicator light, green "Power On"
3	R0226	Indicator light, clear "Temp"
4	R4623	Switch, mode 4 position
	R8515	Knob & shaft assy, mode switch
5	R2666	Timer, 120 minute, 230V, 60hz
	16686	Knob, timer
6	R6407	Controller kit, hot air, 150-500 degrees P5
	16686	Knob, hot air controller
	R7319	Probe, thermistor hot air controller
	R3992	Gasket, hot air probe

Ref. No.	Part No.	Description
7	R7198	Switch, on/off meat probe
8	R5242	Controller, meat probe
9	R5219	Connector, panel jack, meat probe
10	R5315	Probe, meat plug in type
	R5218	Harness, meat probe
	R5325	Wire, thermocouple
	R6988	Suppressor, arc
	R6987	Harness, control panel
	R2792	Relay, SPST 240V (not shown)
	R7519	Varistor assy, 275V
	R9498	Buzzer, 240V
	R8592	Timer, Combi

DOOR COMPONENTS

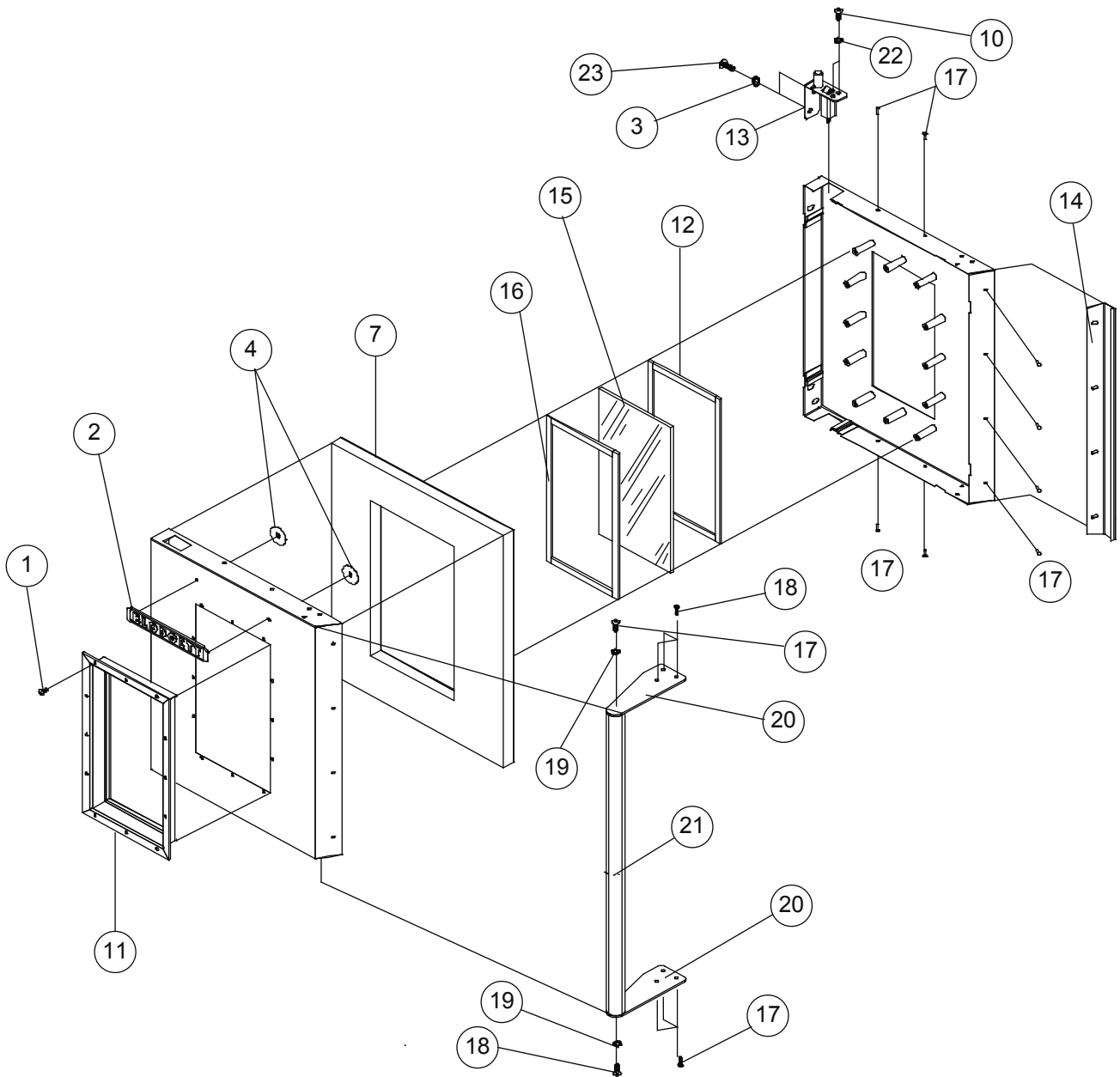


<u>Ref. No.</u>	<u>Part No.</u>	<u>Description</u>
1	31485	Switch, door proximity
2	R6825	Plate assy, switch
3	R7321	Gasket, door switch
4	R6722	Gasket, door cavity
	R3774	Retainer strip, gasket mounting horizontal
	R6770	Retainer strip, gasket mounting vertical
5	R6756	Bracket assy, LH Botm
6	R6758	Bracket assy, RH Botm
	R9889	Bushing
7	R6760	Plate assy, LH Top

<u>Ref. No.</u>	<u>Part No.</u>	<u>Description</u>
8	R6763	Plate assy, RH Top
9	R10319	Latch, Botm RH door
10	R10320	Latch, Top RH door
11	R10318	Receiver, latch
	R7199	Bushing, spacer
	R7297	Shim, door catch .03
	R7299	Shim, door catch .06
	R7748	Spacer, door pivot
	15932	Bearing, .627 ID x 3/4 long
	R9890	Shim, stop

DOOR COMPONENTS

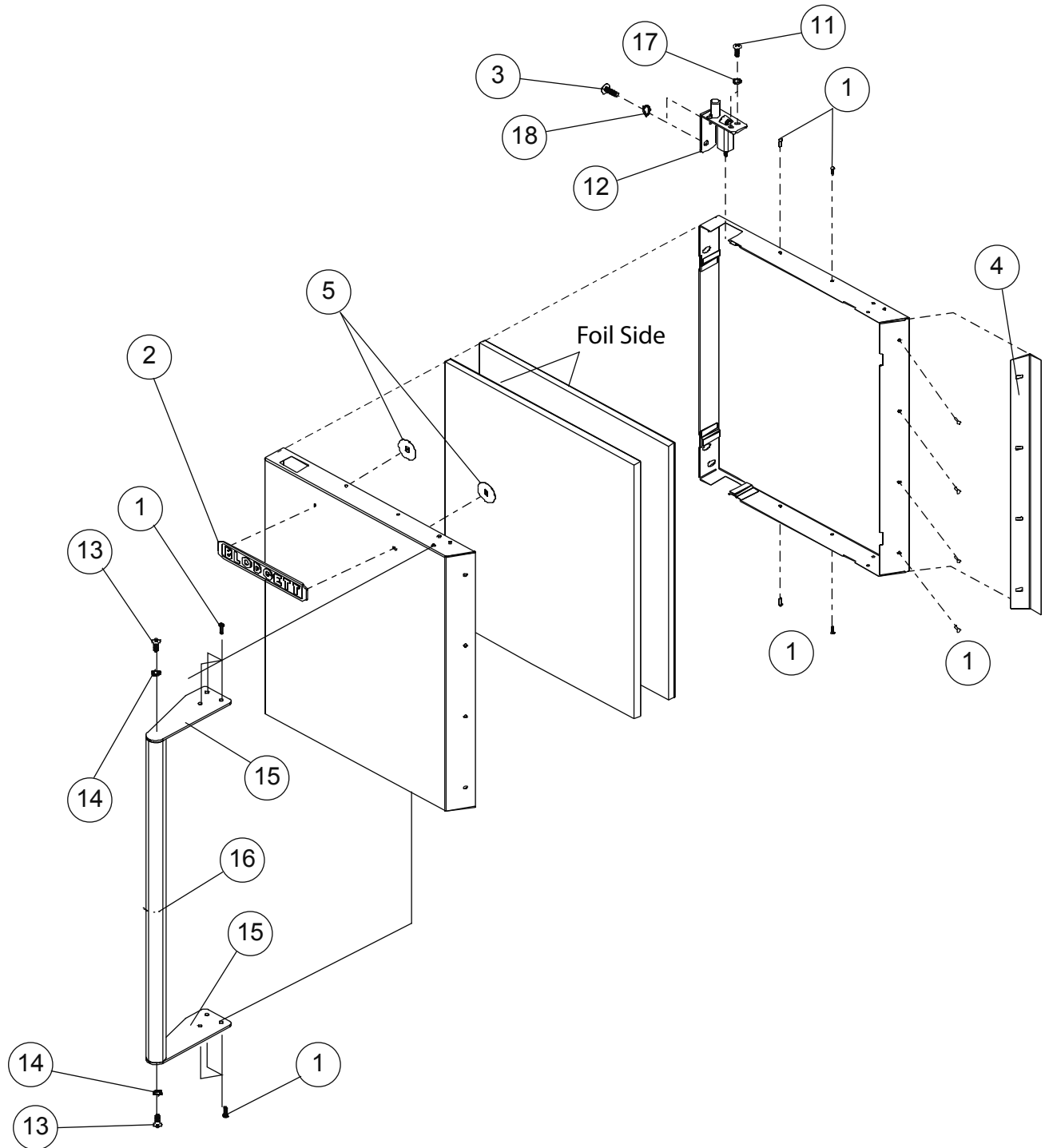
LEFT HAND GLASS DOOR ONLY



<u>Ref. No.</u>	<u>Part No.</u>	<u>Description</u>	<u>Ref. No.</u>	<u>Part No.</u>	<u>Description</u>
1	16384	Screw, machine #10-24 x 0.50	16	R8421	Gasket, silicone 0.50 x 0.18
2	16469	Nameplate, Blodgett	17	R0759	Rivet, monobolt
3	R7586	Screw, truss head 5/16-18 x 1.00	18	R9885	Screw, machine 5/16-18 x 1" phl oval head
4	R2160	Nut, speed	19	R9886	Washer, countersunk finishing
7	R8414	Insulation	20	R9806	Bracket, LH door handle
10	R7589	Screw, truss head 1/4-20 x 0.75	21	R9811	Handle, LH door
11	R8298	Window trim assembly	22	R9292	Washer, bellville 1/4
12	R8819	Gasket, window silicone .50 x .13	23	R9541	Washer, bellville 5/16
13	R7037	Door bracket assy, LH top		R10193	Guard, window
14	R7121	Gasket assy, center door		R10200	Clip, RH2
15	R8304	Glass, window		R10194	Clip, LH 2

DOOR COMPONENTS

LEFT HAND SOLID DOOR ONLY

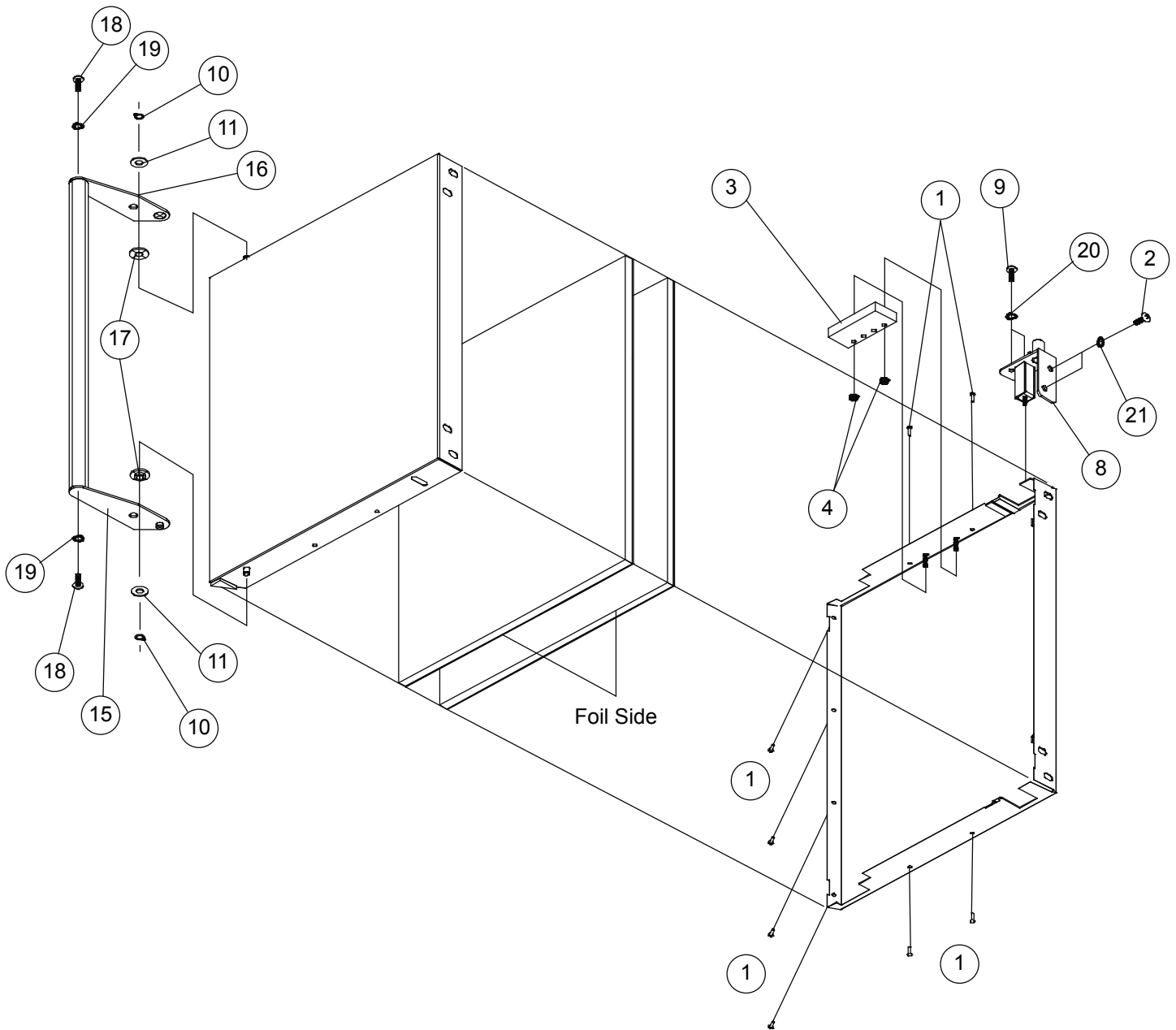


Ref. No.	Part No.	Description
1	R0759	Rivet, monobolt
2	16469	Nameplate, Blodgett
3	R7586	Screw, truss head 5/16-18 x 1.00
4	R7121	Gasket assy., center door
5	R2160	Nut, speed
11	R7589	Screw, truss head 1/4-20 x 0.75
12	R7037	Door bracket assy., LH top

Ref. No.	Part No.	Description
13	R9885	Screw, machine 5/16-18 x 1" ph oval head
14	R9886	Washer, countersunk finishing
15	R9806	Bracket, LH door handle
16	R9811	Handle, LH door
17	R9292	Washer, bellville 1/4
18	R9541	Washer, bellville 5/16

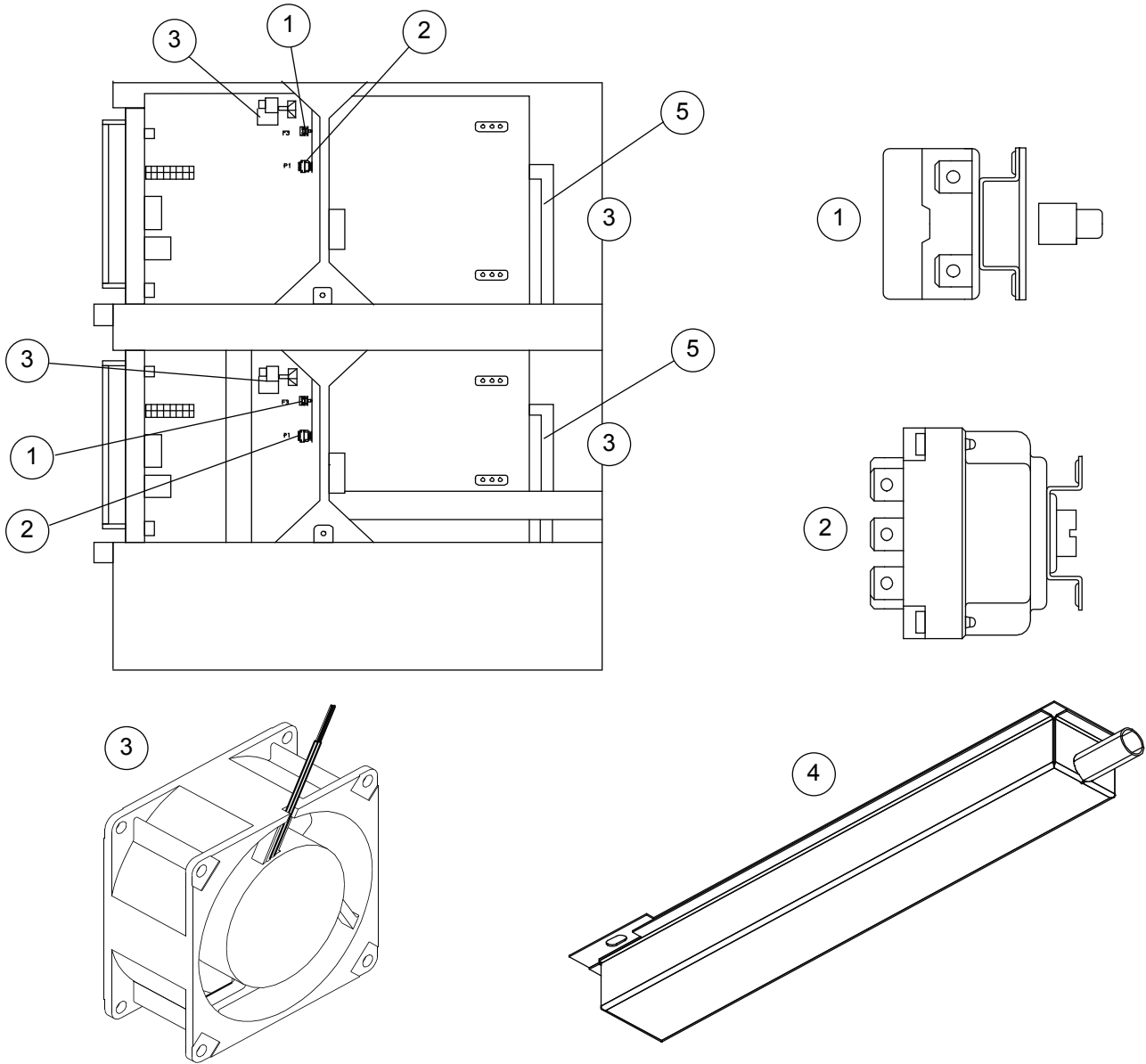
DOOR COMPONENTS

RIGHT HAND SOLID DOOR ONLY



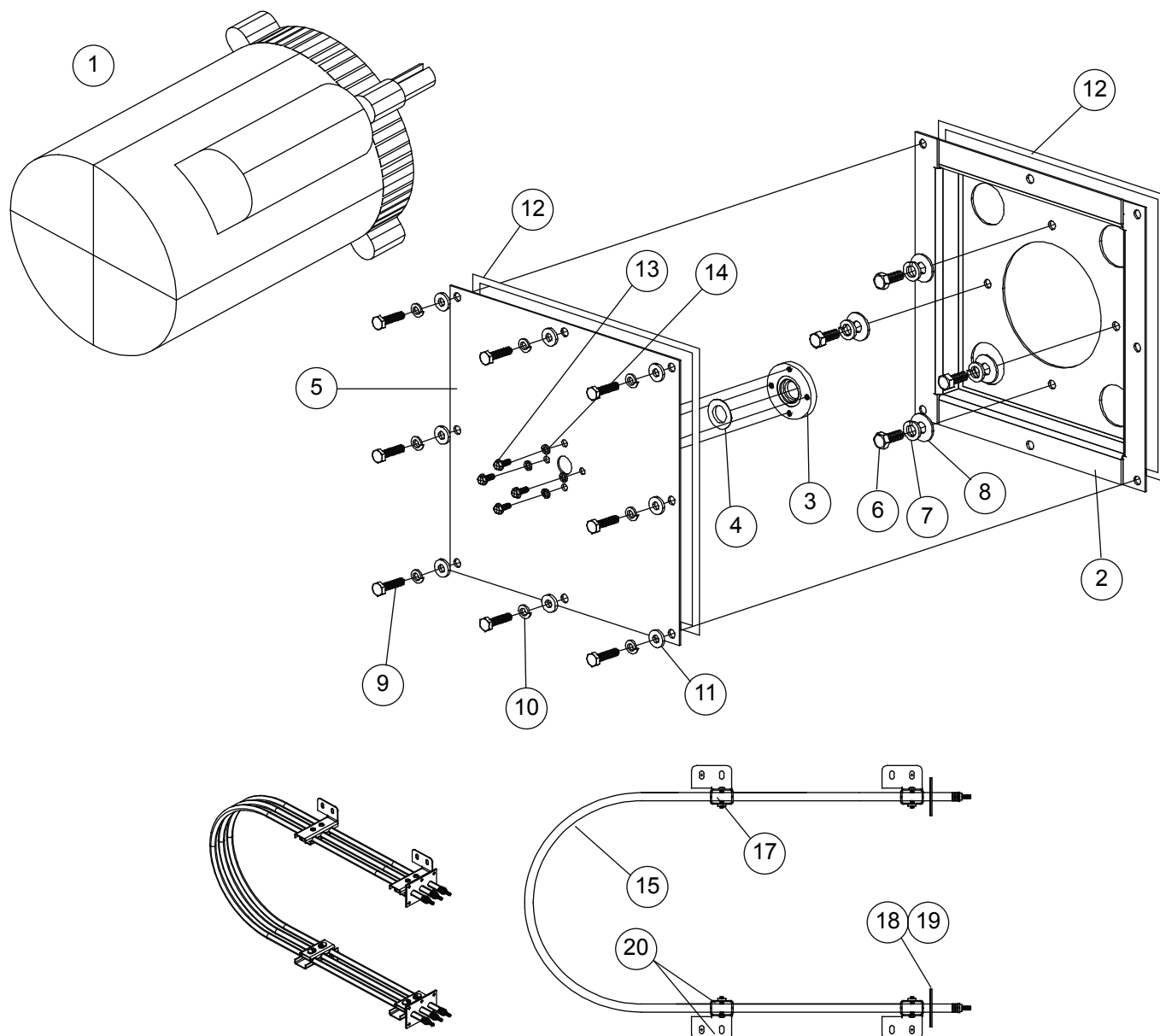
Ref. No.	Part No.	Description	Ref. No.	Part No.	Description
1	R0759	Rivet monobolt	15	R9810	Bracket assy., RH bottom door
2	R7586	Screw, truss head 5/16-18 x 1.00	16	R9809	Bracket assy., RH top door
3	31486	Actuator, proximity switch	17	R9874	Bearing, door handle pivot
4	M3649	Nut, keps #10-24	18	R9885	Screw, machine 5/16-18 x 1.00 phl. oval
8	R6757	Door bracket assy., RH top	19	R9886	Washer, countersunk finishing
9	R7589	Screw, truss head 1/4-20 x 0.75	20	R9292	Washer, Bellville 1/4
10	R9896	Ring, retaining	21	R9541	Washer, Bellville 5/16
11	R9876	Washer, door pivot			

ELECTRIC & STEAM SUPPLY COMPONENTS



Ref. No.	Part No.	Description
1	R1573	Thermostat, cooking compartment F3
2	R2801	Thermostat, too hot to steam P1
3	23034	Cooling fan, 230V 4" axial (in rear)
4	R6780	Quench box assy.
	R2868	Drain gasket, cavity
5	R9569	Steam line, bottom oven
	R10459	Steam line, top oven

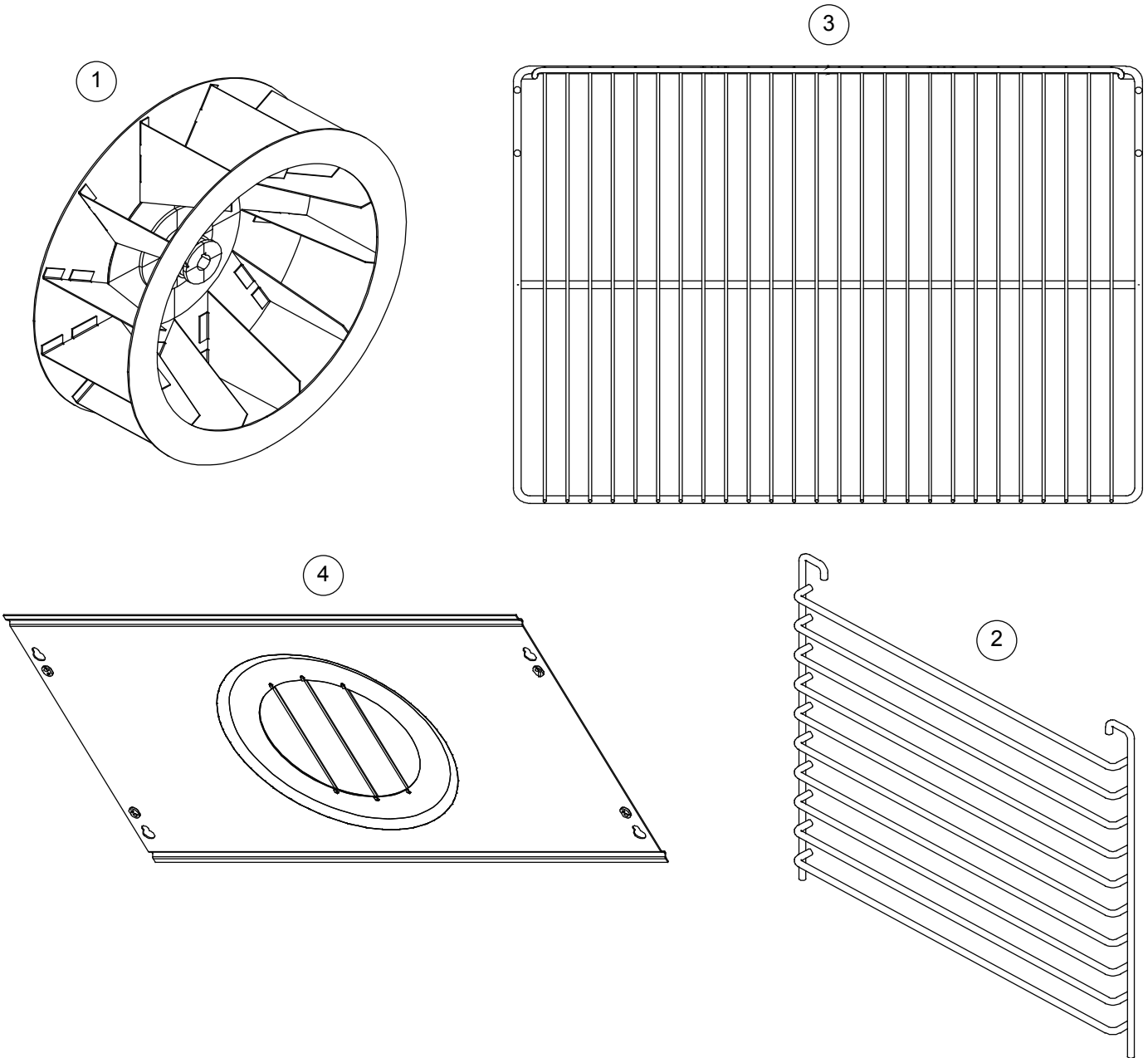
MOTOR & HOT AIR ELEMENTS



Ref. No.	Part No.	Description
1	R5840	Motor & plate assy
	R4920	Motor, 480V
	R8154	Bracket, motor mount
	R8955	Retainer, seal
	R4244	Seal, motor shaft
	R8205	Plate, insulation cover
	20559	Bolt, 3/8-16 x 3/4 hex head
	M0229	Washer, 3/8 lock
	R2292	Washer, 3/8 flat
	R3932	Bolt, 1/4-20 x 1 hex head
	M0417	Washer, 1/4 lock
	R0733	Washer, 1/4 flat
	R8423	Sealant, 1/4-3/16 goretex (per foot)

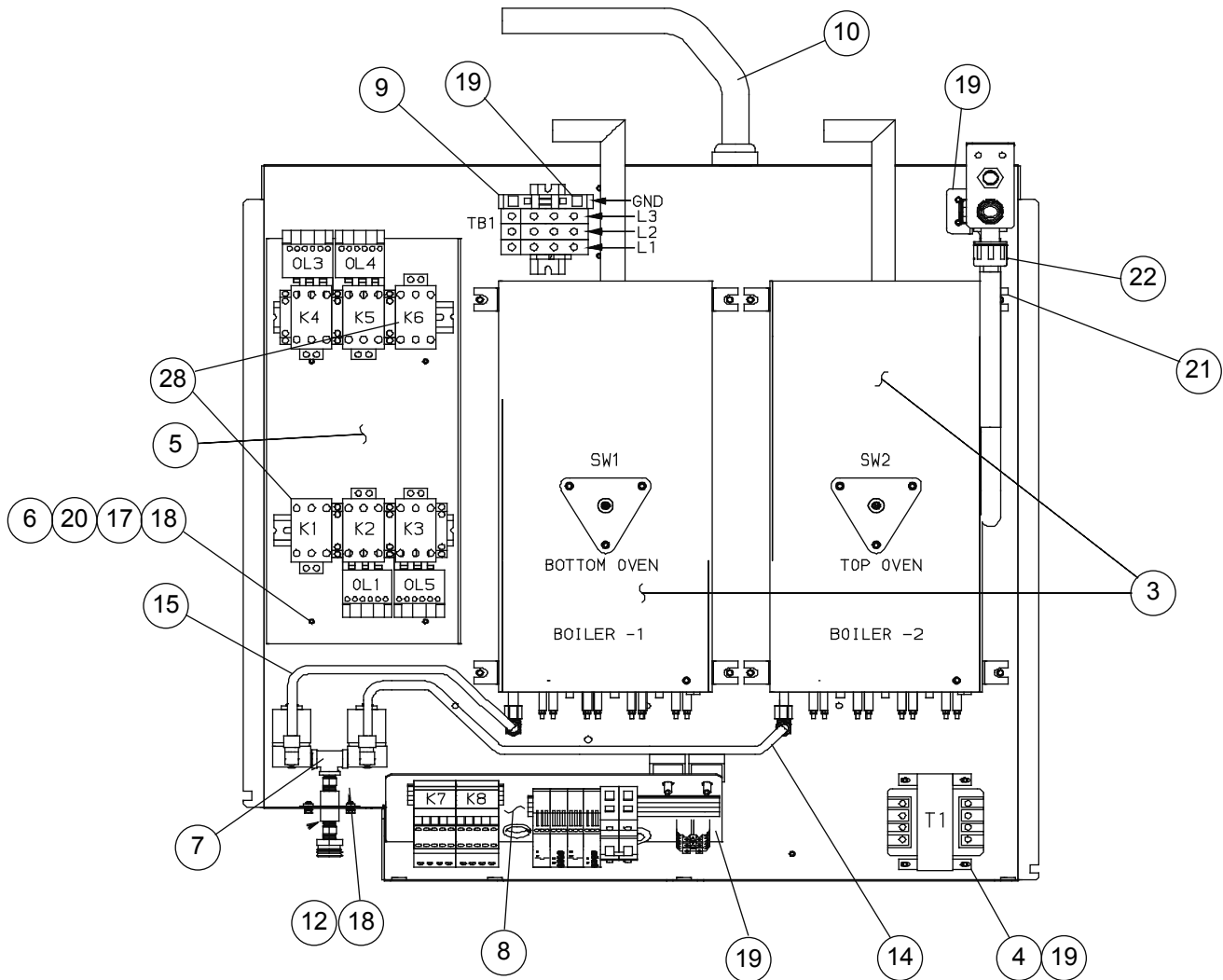
Ref. No.	Part No.	Description
13	R1539	Screw, machine 10-32 x .5 phillips head
14	R0726	Washer, #10 lock
	R5769	Tool, motor shaft alignment
15	R9743	Element assy, hot air
16	R11073	Bracket, element mounting top
	R11074	Bracket, element mounting bottom
17	R6697	Bracket assy, clamp
18	R7288	Plate, element
19	R7289	Gasket, element plate
20	R7313	Screw, machine #8-32 x 1
	R11328	Harness, hot air element
	R11296	Harness, motor

INTERIOR COMPONENTS



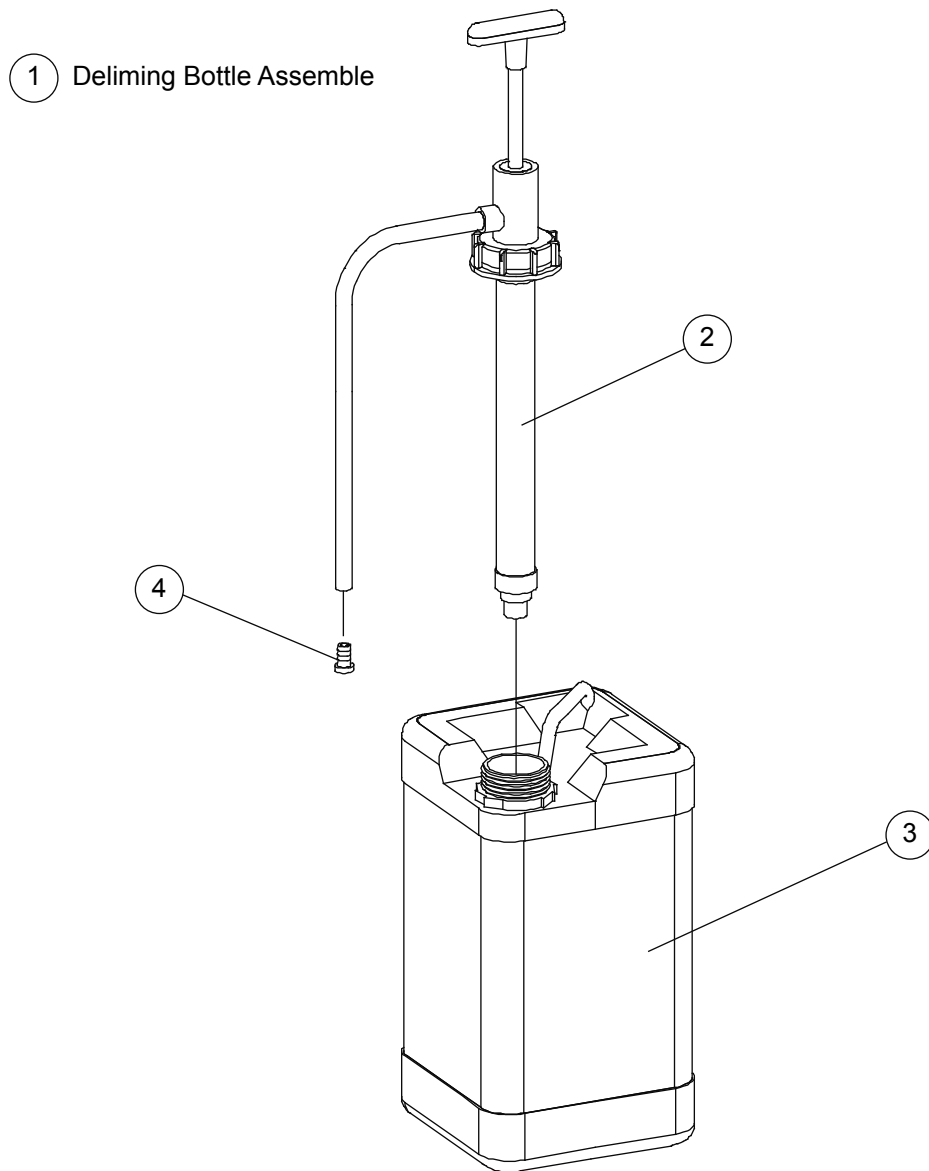
Ref. No.	Part No.	Description
1	R7049	Blower wheel, s/s
	R4771	Gasket, blower wheel mounting
2	R7219	Rack holder
3	R3664	Wire rack
4	R7213	Baffle assy

SLIDE TRAY COMPONENTS



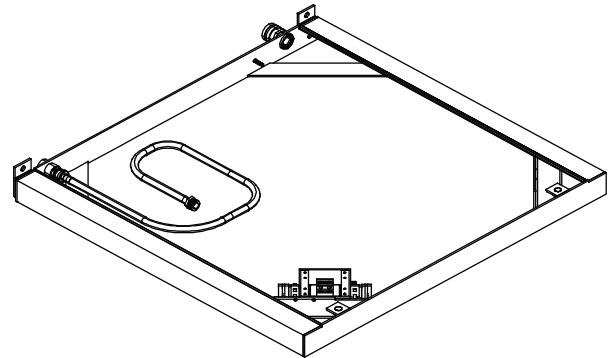
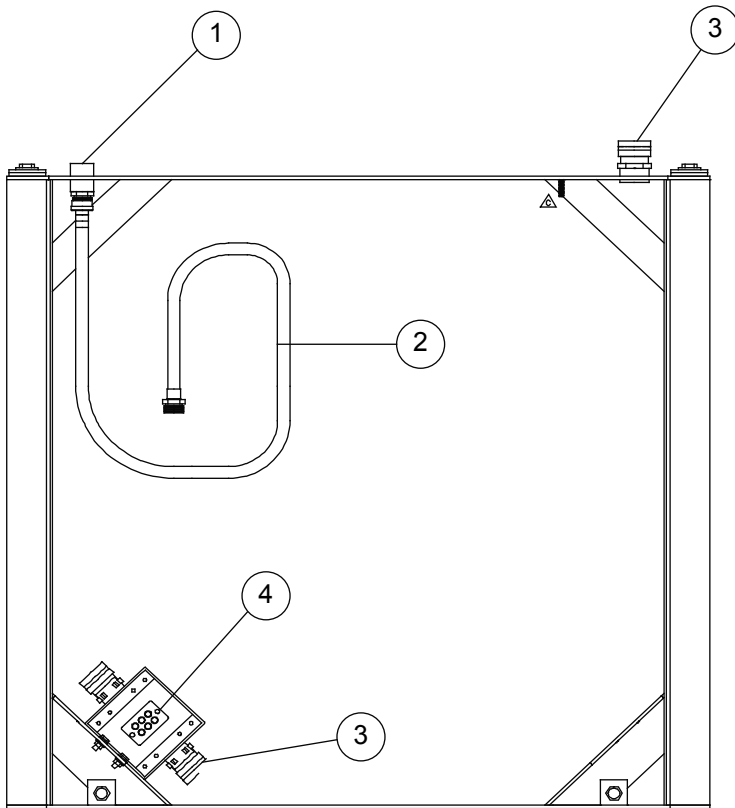
Ref. No.	Part No.	Description	Ref. No.	Part No.	Description
2	R11269	Assy, pressure regulator	15	R6328	Tube, flex 18"
3	R10017	Assembly, boiler complete	16	R1270	Screw, machine M4 x 70
	M0231	Nut, hex 1/4-20 S/S	17	R9618	Screw, 10 - 32 x .5 machine
	M0417	Washer, lock 1/4 split	18	R0726	Washer, #10 lock
	R0733	Washer, flat 1/4 S/S	19	M3950	Nut, 10-24 s/s flanged hex
	R10012	Boiler assy., welded	20	M1820	Washer, flat #10
	R10029	Ball float assy., S/S	8	R11253	Motor high limit assembly & water level timers
	R10047	Insulation, boiler		R11235	Motor contactor
	R6562	Steam element		54889	Motor overload protector
	R8071	Probe retainer		R11271	Float debounce timer
	R10547	Gasket, steam inlet		R11270	Boiler duty cycle control
	R8986	Fitting, compression elbow		R2630	Boiler high limit
4	R2051	Transformer, 480/240		R11255	Terminal block
5	R11251	Assembly, bracket mechanical contactors		R11259	Circuit breaker
	R11087	Contactors, 40 amp	26	R10176	Harness, steam cont. w/ground
	R11233	Current protector	27	R11297	Harness, base control
6	R9836	Standoff, 10-32 x 0.75		R11276	Assy., conduit wiring oven to base
7	R11386	Solenoid assy., 208/240 1/2 way		R11254	Harness, motor power distribution
9	R11116	Assembly, distribution block	28	R11112	Contactors, 65 amp
10	R11231	Cordset			
14	R8799	Tube, flex 24'			

DELIMING HAND PUMP COMPONENTS



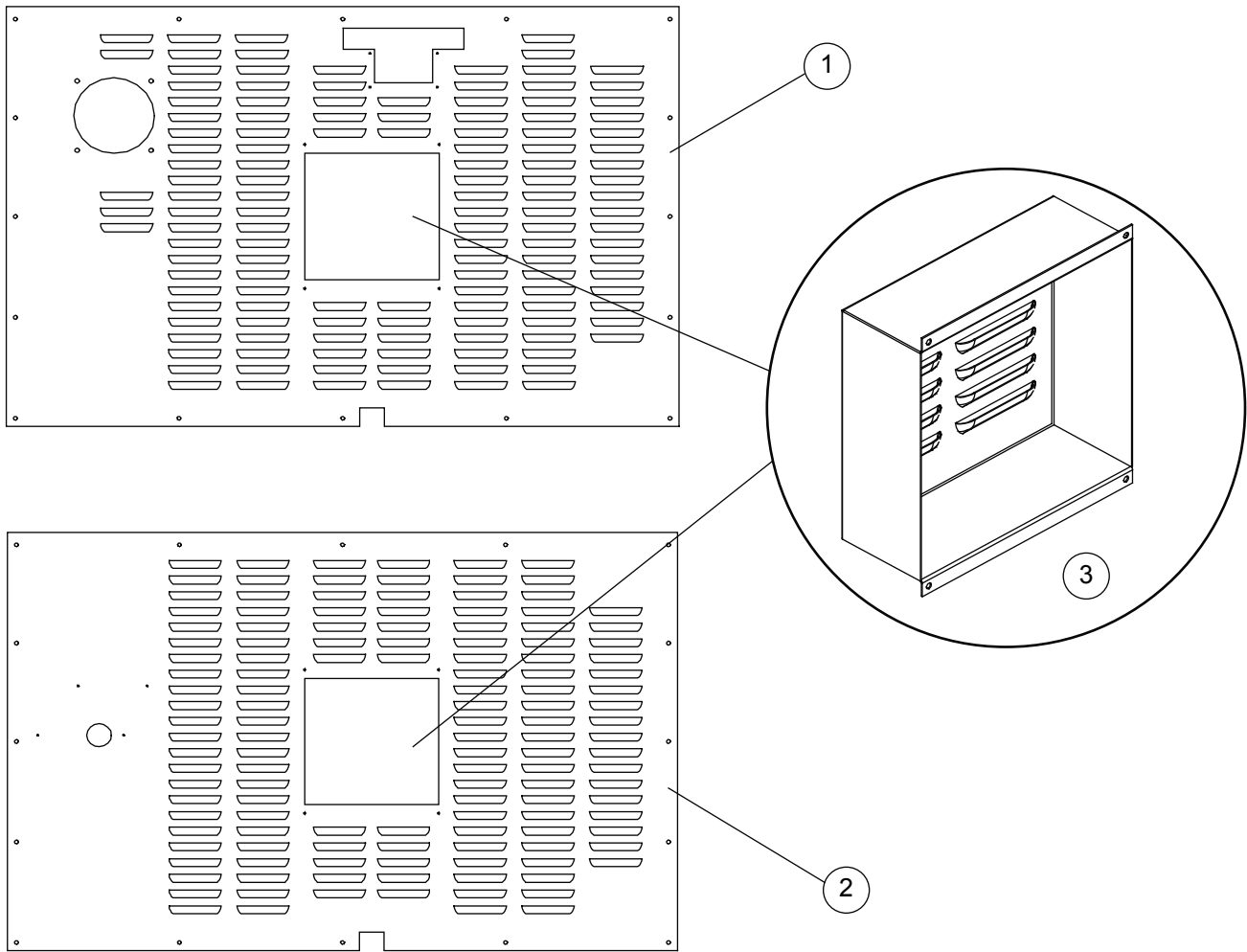
Ref. No.	Part No.	Description
1	R10280	Delimiting bottle assy.
2	R8860	Hand pump assy
3	R8861	Bottle, delimiting
4	R2999	Filling, swivel
	R7750	Washer

INSTALLATION BASE COMPONENTS



Ref. No.	Part No.	Description
1	R7749	Fitting, male 3/4"
2	R10889	Hose, water inlet
3	R10563	Fitting, liquid tight cord
4	R10565	Box, electrical
	R7817	Cover, electrical box
	R10550	Terminal block
	R10550	Block, terminal
	R10564	Box, electrical
	R10971	Bracket, t-block
	R9586	Nut, hex 6-32
	R9588	Screw, machine 6-32
	R7599	Spacer
	R7600	Tab locking
	R7737	Base, install, welded

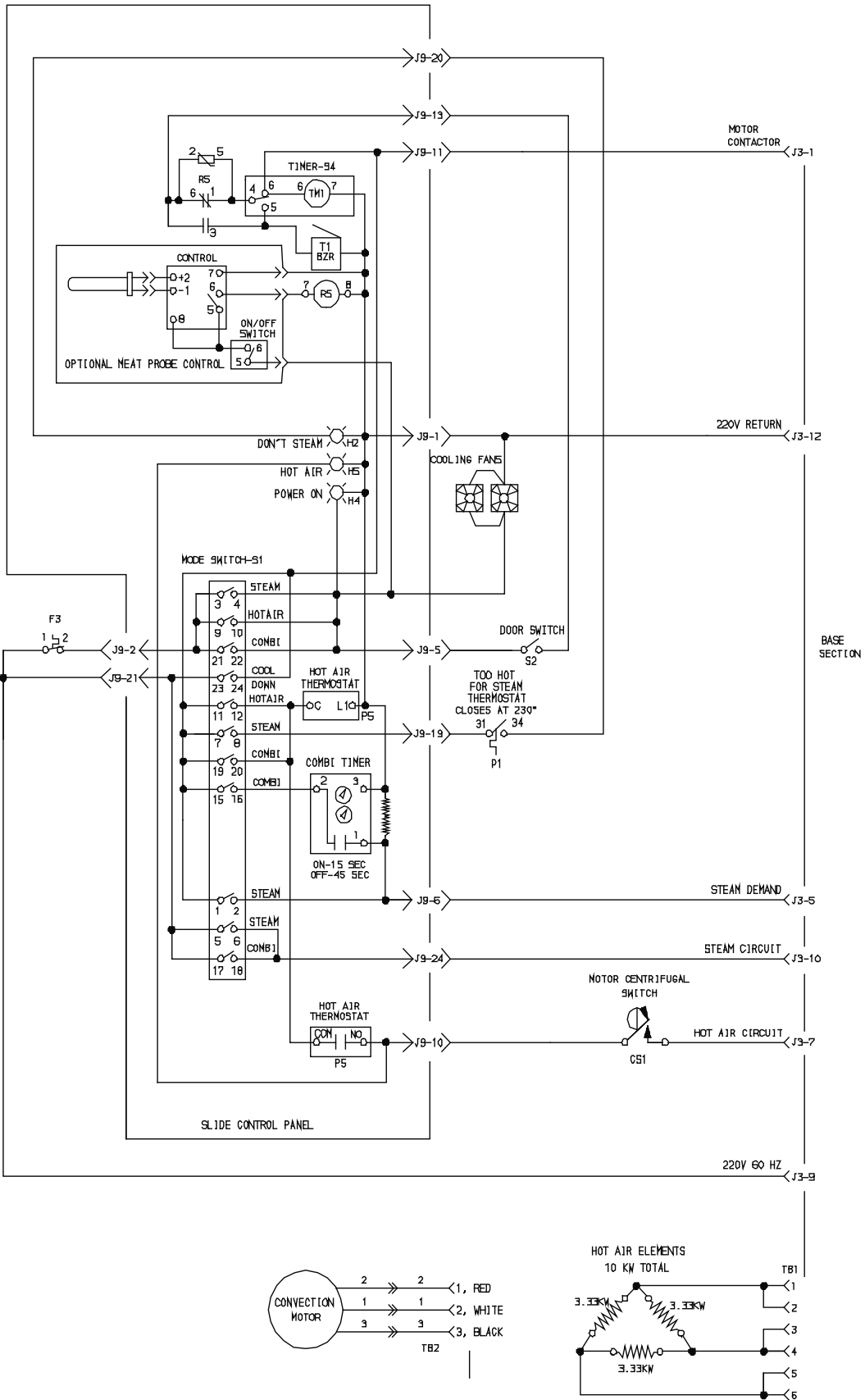
PLUMBING & VENTING COMPONENTS



Ref. No.	Part No.	Description
1	R11295	Bodyback, top oven
2	R10401	Plate, bottom oven body back
3	R7295	Cover, motor
	R10830	Drain tube, bottom oven
	R10831	Drain tube, top oven

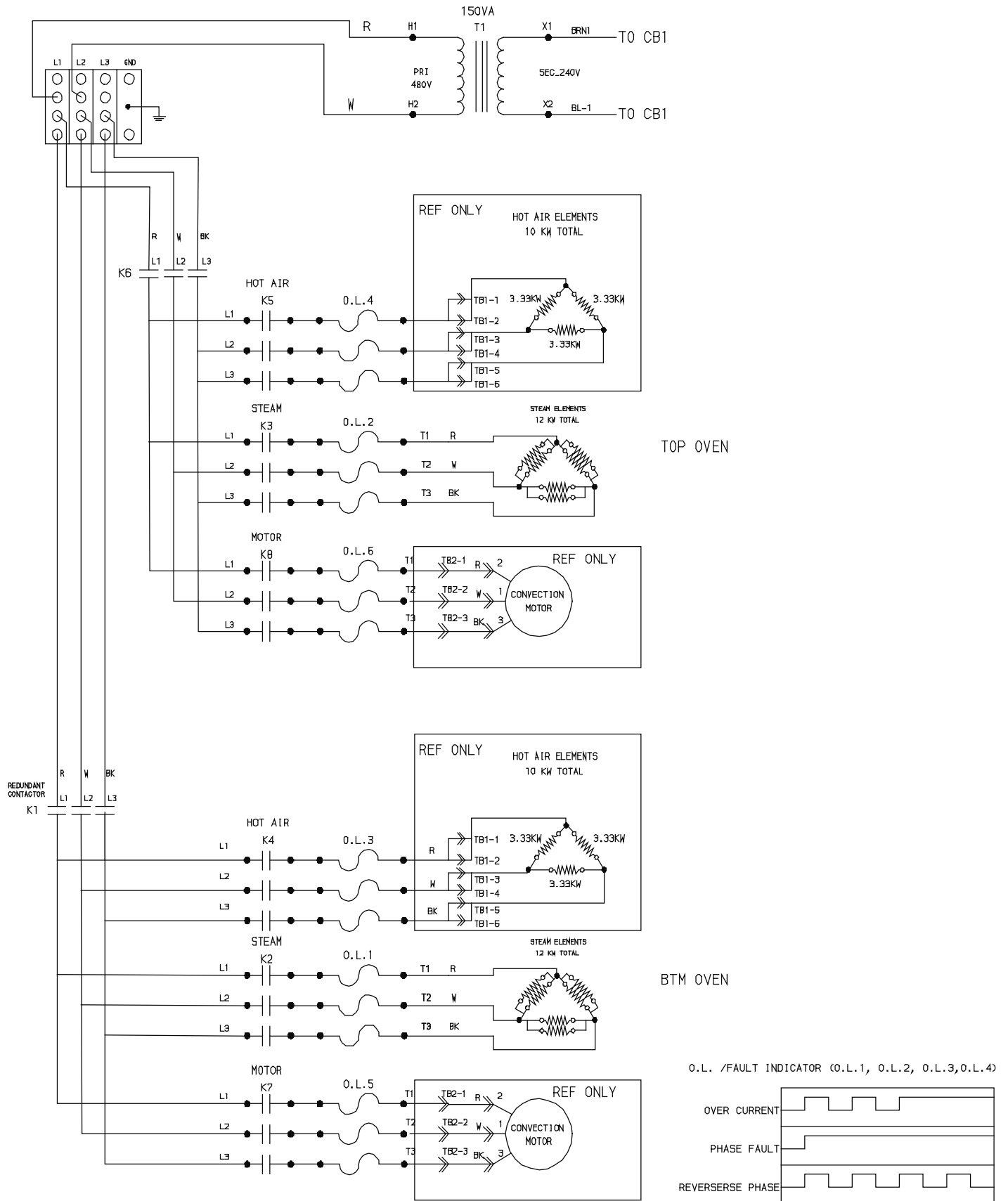
SCHEMATICS

TOP OVEN



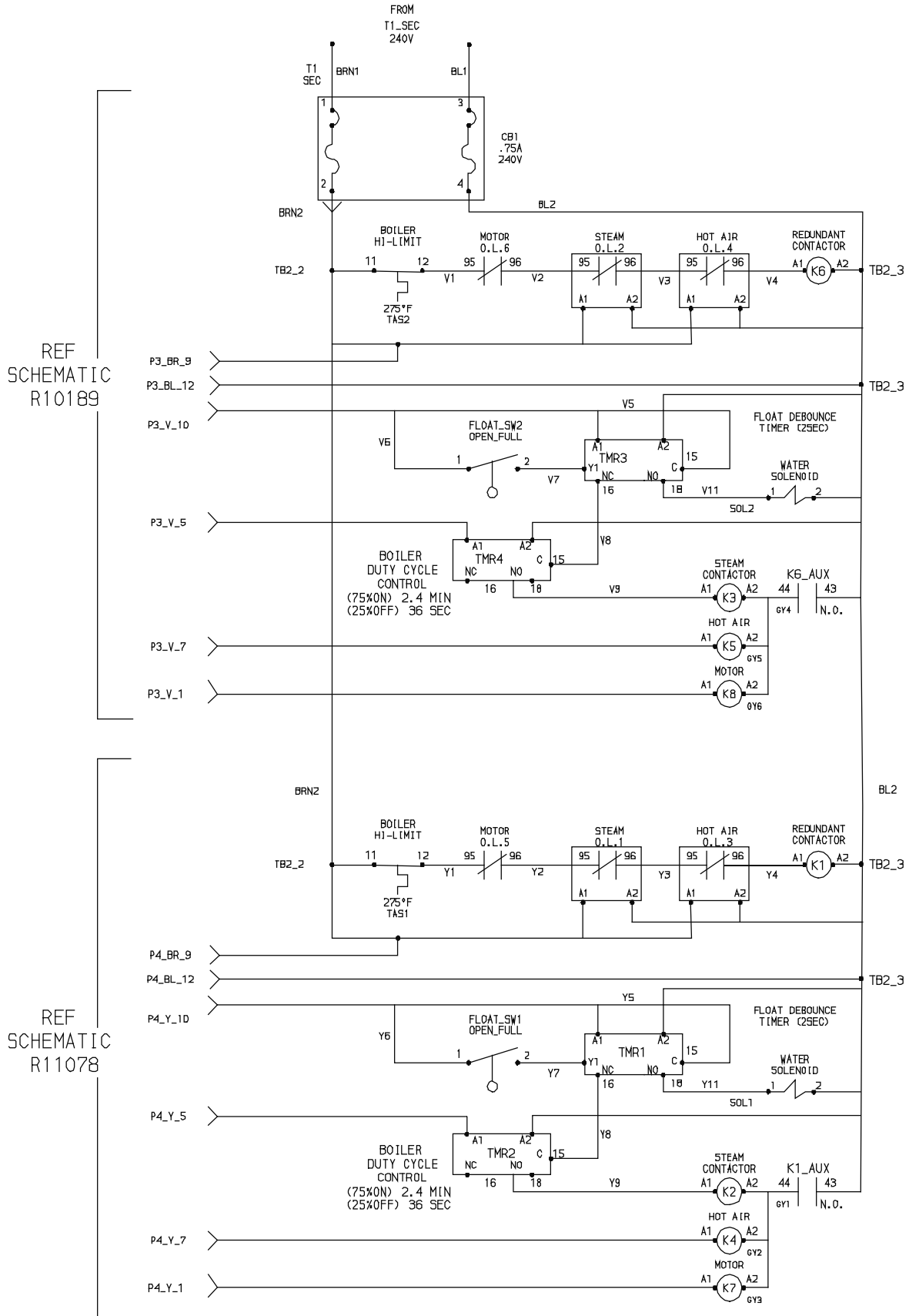
SCHEMATICS

OVEN BASE CONTROL



SCHEMATICS

OVEN BASE POWER



SCHEMATICS

BOTTOM OVEN

