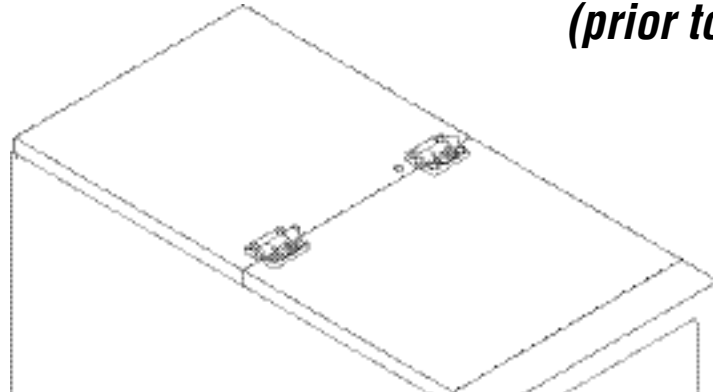
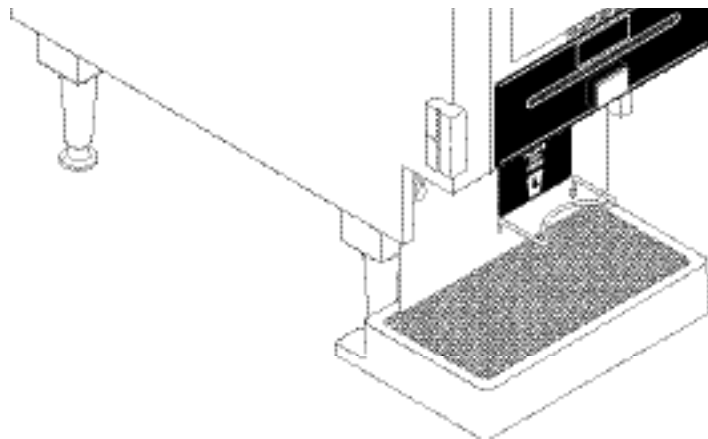


BUNN®

HC-1 *(prior to S/N HC00025000)*



DISCONTINUED VERSION
Parts listed in this catalog
may no longer be available.



ILLUSTRATED PARTS CATALOG

Designs, materials, weights, specifications, and dimensions for equipment or replacement parts are subject to change without notice.

BUNN-O-MATIC CORPORATION

POST OFFICE BOX 3227

SPRINGFIELD, ILLINOIS 62708-3227

PHONE: (217) 529-6601 FAX: (217) 529-6644

www.bunnomatic.com

WARRANTY

Bunn-O-Matic Corp. ("Bunn") warrants the equipment manufactured by it to be commercially free from defects in material and workmanship existing at the time of manufacture and appearing within one year from the date of installation. In addition:

1.) Bunn warrants electronic circuit and/or control boards to be commercially free from defects in material and workmanship for three years from the date of installation.

2.) Bunn warrants the compressor on refrigeration equipment to be commercially free from defects in material and workmanship for two years from the date of installation.

3.) Bunn warrants that the grinding burrs on coffee grinding equipment will grind coffee to meet original factory screen sieve analysis for three years from date of installation or for 30,000 pounds of coffee, whichever comes first.

This warranty does not apply to any equipment, component or part that was not manufactured by Bunn or that, in Bunn's judgement, has been affected by misuse, neglect, alteration, improper installation or operation, improper maintenance or repair, damage or casualty.

THE FOREGOING WARRANTY IS EXCLUSIVE AND IS IN LIEU OF ANY OTHER WARRANTY, WRITTEN OR ORAL, EXPRESS OR IMPLIED, INCLUDING, BUT NOT LIMITED TO, ANY IMPLIED WARRANTY OF EITHER MERCHANTABILITY OR FITNESS FOR A PARTICULAR PURPOSE. The agents, dealers or employees of Bunn are not authorized to make modifications to this warranty or to make additional warranties that are binding on Bunn. Accordingly, statements by such individuals, whether oral or written, do not constitute warranties and should not be relied upon.

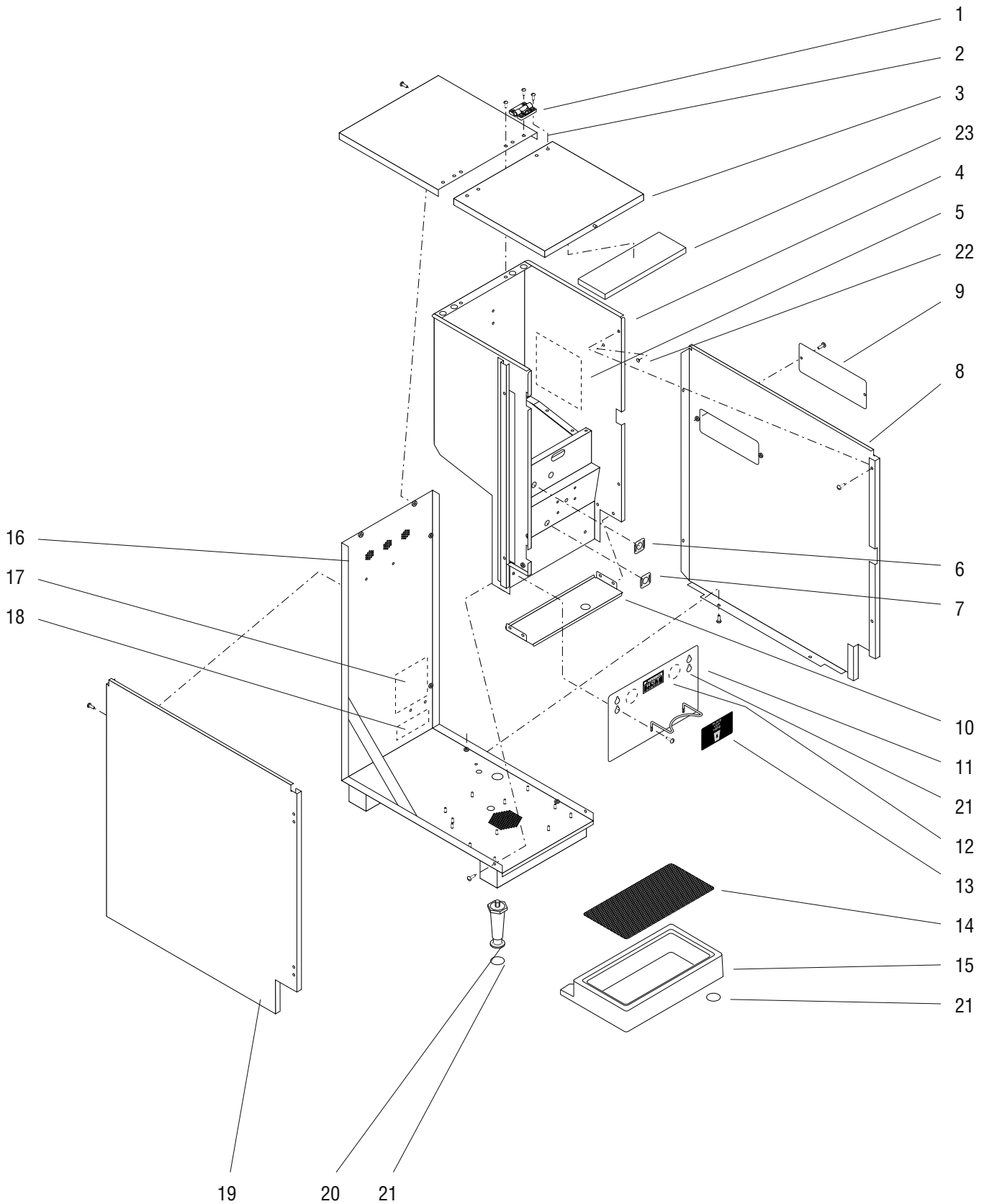
The Buyer shall give Bunn prompt notice of any claim to be made under this warranty by telephone at (217) 529-6601 or by writing to Post Office Box 3227, Springfield, Illinois, 62708-3227. If requested by Bunn, the Buyer shall ship the defective equipment prepaid to an authorized Bunn service location. If Bunn determines, in its sole discretion, that the equipment does not conform to the warranty, Bunn shall repair the equipment with no charge for parts during the warranty period and no charge for labor by a Bunn Authorized Service Representative during the warranty period. If Bunn determines that repair is not feasible, Bunn shall, at its sole option, replace the equipment or refund the purchase price for the equipment.

THE BUYER'S REMEDY AGAINST BUNN FOR THE BREACH OF ANY OBLIGATION ARISING OUT OF THE SALE OF THIS EQUIPMENT, WHETHER DERIVED FROM WARRANTY OR OTHERWISE, SHALL BE LIMITED, AS SPECIFIED HEREIN, TO REPAIR OR, AT BUNN'S SOLE OPTION, REPLACEMENT OR REFUND.

In no event shall Bunn be liable for any other damage or loss, including, but not limited to, lost profits, lost sales, loss of use of equipment, claims of Buyer's customers, cost of capital, cost of down time, cost of substitute equipment, facilities or services, or any other special, incidental or consequential damages.

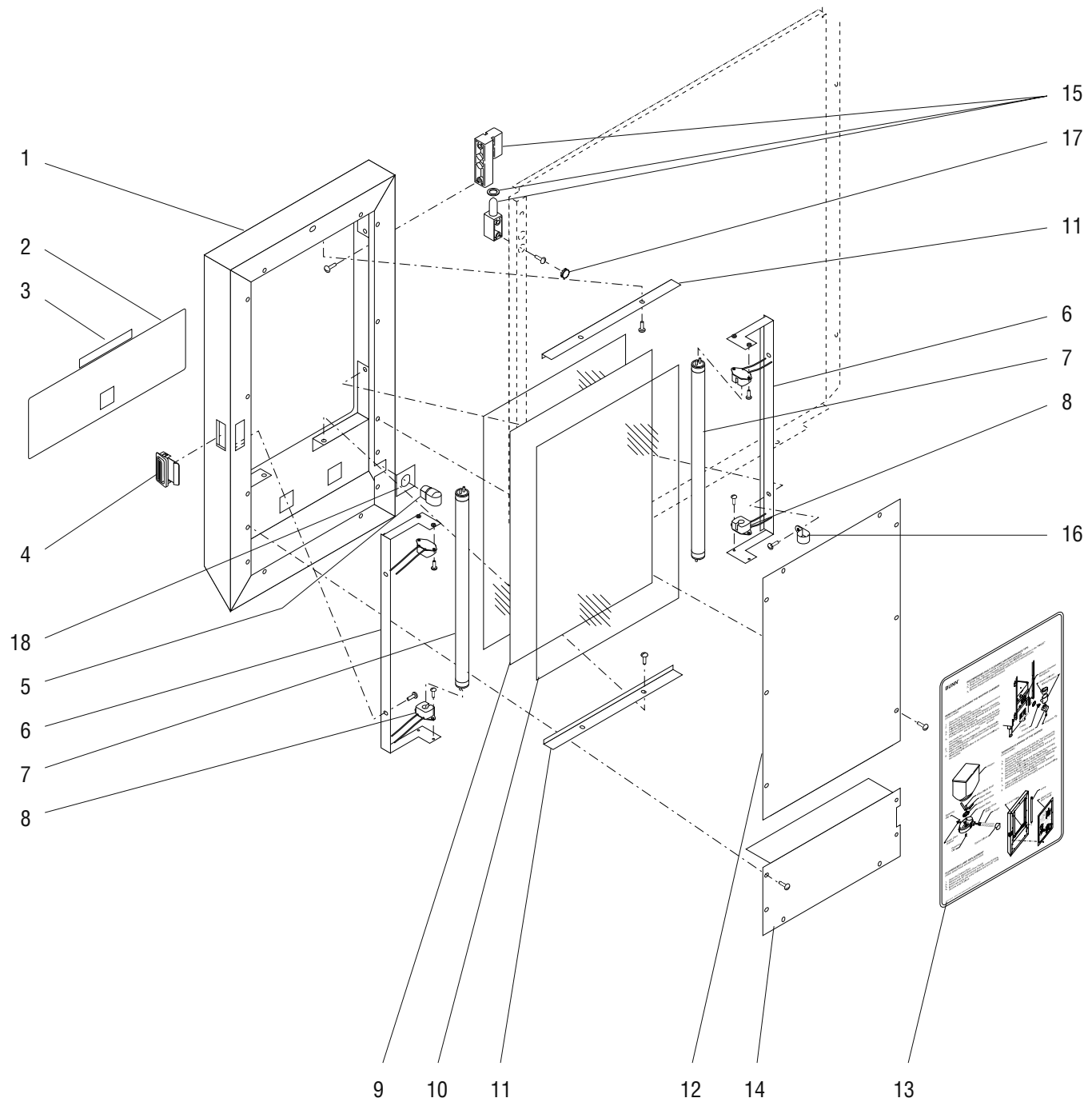
TABLE OF CONTENTS

| | |
|--|----|
| Auger Drive and Hopper Assembly | 8 |
| Covers, Panels and Drip Tray | 4 |
| Dispense Valves and Lines | 16 |
| Door, Lamps and Panels | 6 |
| Electrical Controls | 18 |
| Mixing/Whipper Chambers and Drive Motor | 10 |
| Numerical Index | 20 |
| Strainer, Solenoid, Fill Valve and Lines | 14 |
| Tank, Heater and Overflow Protection | 12 |



COVERS, PANELS AND DRIP TRAY

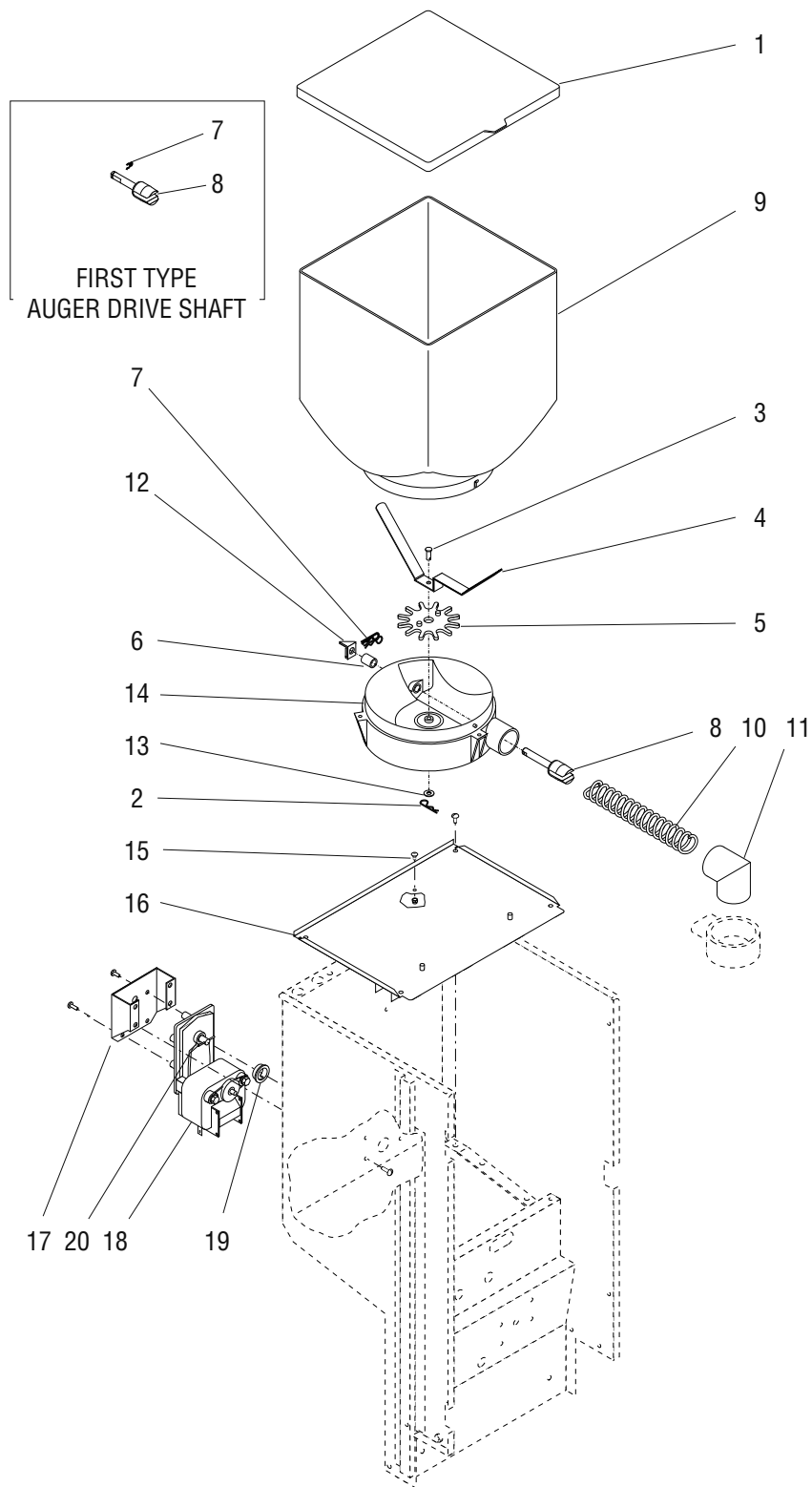
| ITEM | PART NO. | QTY. | DESCRIPTION |
|------|------------|------|---|
| 1 | 26504.0000 | 2 | Hinge |
| | 02308.0000 | 8 | Screw, Pan Head #8 - 32 x .375" |
| 2 | 25796.0000 | 1 | Cover, Top Rear (SST) |
| | 25796.0001 | 1 | Cover, Top Rear (Black) |
| | 02331.0000 | 4 | Screw, Truss Head #10 - 32 x .375" (SST) |
| | 02331.0001 | 4 | Screw, Truss Head #10 - 32 x .375" (Black) |
| 3 | 25901.0000 | 1 | Cover, Top Front (SST) |
| | 25901.0001 | 1 | Cover, Top Front (Black) } Also order item 23 |
| 4 | ----- | 1 | Panel W/Decals, Front (Not available)(Early Models without Hopper Delay) |
| | ----- | 1 | Panel W/Decals, Front (Not available)(Late Models with Hopper Delay) |
| | 02331.0000 | 2 | Screw, Truss Head #10 - 32 x .375" |
| 5 | 26532.0001 | 1 | Schematic, 120 & 120/240V (Early Models without Hopper Delay) |
| | 26702.0001 | 1 | Schematic, 120 & 120/240V (Late Models with Hopper Delay) |
| 6 | 26524.0000 | 1 | Decal, Tank Heater Switch |
| 7 | 26523.0000 | 1 | Decal, Rinse/Run Switch |
| 8 | 26232.0000 | 1 | Cover, Right Side (SST) |
| | 26232.0001 | 1 | Cover, Right Side (Black) |
| | 01311.0000 | 6 | Screw, Truss Head #8 - 32 x .25" |
| 9 | 25414.0000 | 1 | Cover, Access (SST) |
| | 25414.0001 | 1 | Cover, Access (Black) |
| | 01311.0000 | 2 | Screw, Truss Head #8 - 32 x .25" (SST) |
| | 01311.0003 | 2 | Screw, Truss Head #8 - 32 x .25" (Black) |
| 10 | 26233.0001 | 1 | Panel, Splash |
| | 01311.0000 | 4 | Screw, Truss Head #8 - 32 x .25" |
| 11 | 26757.0000 | 1 | Plate W/Decals, Cup Stop (Includes items 12, 13 & 2 of item 21) |
| | 01311.0001 | 2 | Screw, Truss Head #8 - 32 x .25" Locking |
| 12 | 12368.0001 | 1 | Decal, Caution-Hot Liquid |
| 13 | 26576.0001 | 1 | Decal, Cup Placement |
| 14 | 26509.0000 | 1 | Cover, Drip Tray |
| 15 | 26886.1000 | 1 | Drip Tray Assy (Includes 4 of item 21) |
| 16 | 26751.0000 | 1 | Cover W/Decals, Rear & Bottom (Includes items 17 & 18) |
| 17 | 00831.0000 | 1 | Decal, Warning-Electrical |
| 18 | 00656.0000 | 1 | Decal, Comply to Plumbing Code |
| 19 | 25887.0000 | 1 | Cover, Left Side (SST) |
| | 25887.0001 | 1 | Cover, Left Side (Black) |
| | 01311.0000 | 6 | Screw, Truss Head #8 - 32 x .25" |
| 20 | 26528.0000 | 4 | Leg, 4.0" Adjustable (Also see item 24) |
| 21 | 03996.0000 | 10 | Pad, Rubber 1.25" Dia. |
| 22 | 20621.0000 | 6 | Plug, Hole .203" Dia. |
| 23 | 26667.0000 | 1 | Pad, Hopper Retaining (Self Adhesive) |
| 24 | 13255.0003 | 1 | Kit, Leg 4.0" Adjustable (Includes 4 each of items 20 & 21) (Not illustrated) |



DOOR, LAMPS AND PANELS

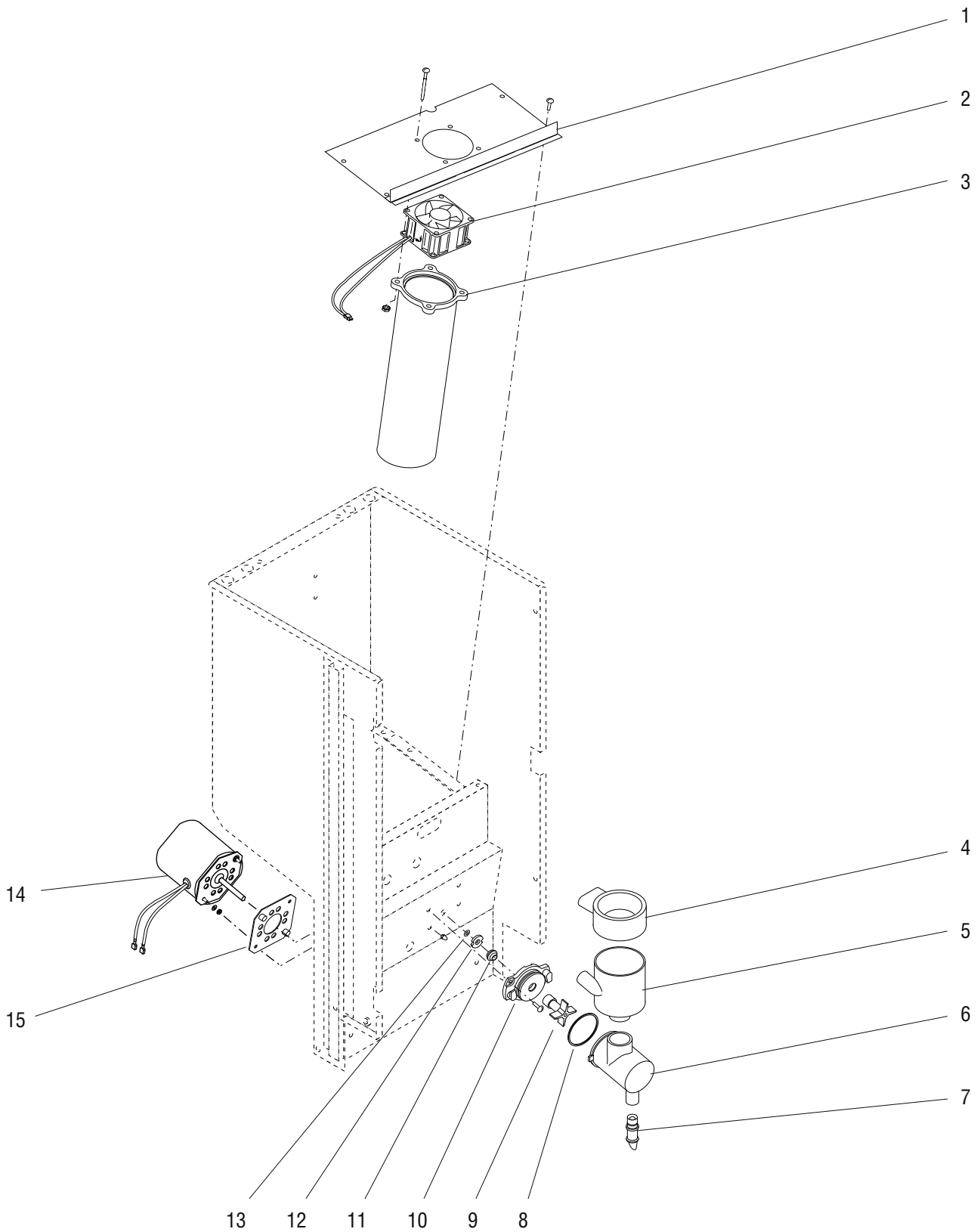
| ITEM | PART NO. | QTY. | DESCRIPTION |
|------|------------|------|--|
| 1 | 26752.0000 | 1 | Door W/Decals (SST) (Includes Item 3 - also order item 2) |
| | 26752.0001 | 1 | Door W/Decals (Black) (Includes Item 3 - also order item 2) |
| 2 | 26525.0001 | 1 | Decal, Door Front |
| 3 | 11646.0000 | 1 | Decal, Caution Hot Liquids |
| 4 | 25898.0000 | 1 | Latch |
| 5 | 26444.0000 | 2 | Bushing, Strain Relief |
| 6 | 26353.0000 | 2 | Bracket, Lamp |
| | 02308.0000 | 4 | Screw, Pan Head #8 - 32 x .375" |
| 7 | 26239.0000 | 2 | Lamp, Fluorescent - 8 Watts |
| 8 | 26539.0000 | 4 | Lamp Holder, Fluorescent |
| | 02361.0000 | 8 | Screw, Pan Head #4 - 40 x .25" |
| 9 | 26520.0000 | 1 | Display, Graphics (Cafe Scene) |
| | 26520.0001 | 1 | Display, Graphics (Fireside Scene) |
| 10 | 26348.0000 | 2 | Window |
| 11 | 26354.0000 | 2 | Clamp, Window |
| | 02308.0000 | 4 | Screw, Pan Head #8 - 32 x .375" |
| 12 | 26756.0000 | 1 | Cover W/Decal, Door - Upper (Includes item 13) |
| | 01311.0000 | 8 | Screw, Truss Head #8 - 32 x .25" |
| 13 | 26521.0001 | 1 | Decal, Cleaning |
| 14 | 26350.0000 | 1 | Cover, Door - Bottom |
| | 01311.0000 | 6 | Screw, Truss Head #8 - 32 x .25" |
| 15 | 25897.0000 | 2 | Hinge, Door |
| | 02331.0000 | 8 | Screw, Truss Head #10 - 32 x .375" |
| 16 | 05920.0000 | 2 | Clamp, Cable |
| 17 | 00619.0010 | 4 | Plug, Hole .438" Dia. |
| 18 | 26892.0000 | 1 | Plate, Strain Relief |
| 19 | 26507.0000 | 1 | Wiring Harness, Door Interconnect (Includes item 18 & 1 of item 5) |
| 20 | 26506.0000 | 1 | Wiring Harness, Door |
| 21 | 26537.0000 | 1 | Decal, Flavors |

Not illust.



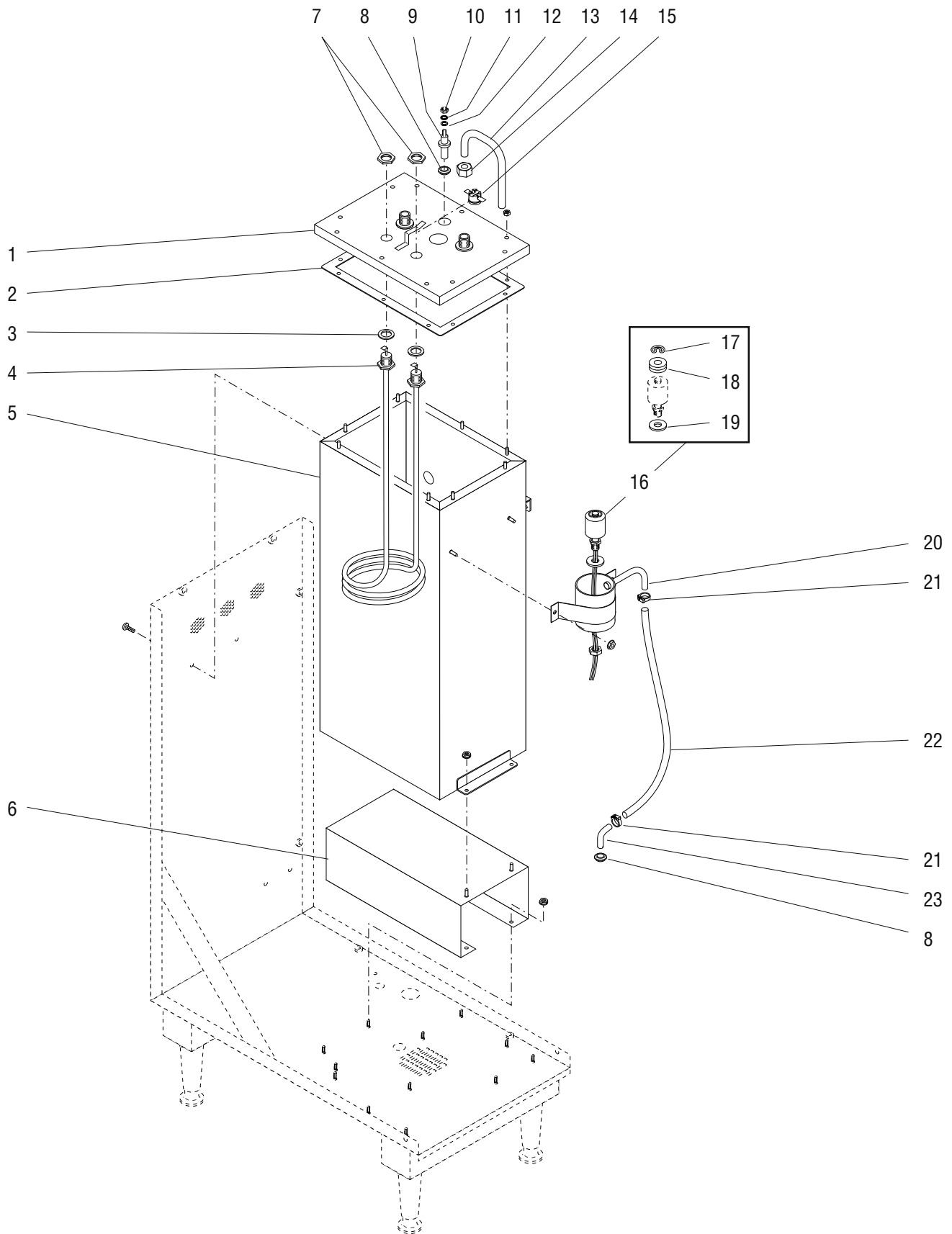
AUGER DRIVE AND HOPPER ASSEMBLY

| ITEM | PART NO. | QTY. | DESCRIPTION |
|------|------------|------|---|
| - | 25894.1000 | 1 | Hopper & Auger Drive Assy (8 Tooth Drive Gear) (Includes items 1 thru 14) |
| 1 | 25904.0000 | 1 | Lid, Hopper |
| 2 | 21358.0000 | 1 | Clip, Retainer |
| 3 | 21357.0000 | 1 | Shaft, Wiper |
| 4 | 21747.0000 | 1 | Blade, Wiper |
| 5 | 26680.0000 | 1 | Gear, Wiper Drive (8 Teeth) |
| | 21746.0000 | 1 | Gear, Wiper Drive (12 Teeth) |
| 6 | 25892.0000 | 1 | Spacer .312" I.D. x .437" O.D. x .56" LG |
| 7 | 21745.0000 | 1 | Clip, Retainer (First Type) |
| | 21358.0000 | 1 | Clip, Retainer (Second Type) |
| 8 | ----- | 1 | Shaft, Auger Drive (First Type. Not available, order second type Shaft and item 7)) |
| | 26940.0001 | 1 | Shaft, Auger Drive (Second Type) |
| 9 | 25895.0000 | 1 | Hopper |
| 10 | 26112.0000 | 1 | Auger, Wire (Use with 8 Tooth Wiper Drive Gear) |
| | 21355.0000 | 1 | Auger, Wire (Use with 12 Tooth Wiper Drive Gear) |
| 11 | 25903.0000 | 1 | Elbow, Ejector |
| 12 | 25744.0000 | 1 | Bracket, Auger Drive |
| 13 | 01522.0000 | 1 | Washer .203" I.D. x .50" O.D. |
| 14 | 25891.0000 | 1 | Base, Hopper |
| 15 | 20960.0000 | 1 | Screw, Shoulder #6 - 32 x .375" |
| | 01520.0000 | 1 | Lockwasher, Split #6 |
| | 00906.0000 | 1 | Nut, Hex #6 - 32 |
| | 00991.0002 | 1 | Nut, Locking #6 - 32 (Late Models) |
| | | | } Early Models |
| 16 | 26238.0001 | 1 | Panel, Hopper Support |
| | 01311.0000 | 4 | Screw, Truss Head #8 - 32 x .25" |
| 17 | 25794.0000 | 1 | Bracket, Motor Mounting |
| | 01311.0001 | 4 | Screw, Truss Head #8 - 32 x .25" Locking |
| 18 | 26754.0000 | 1 | Gearmotor W/Pin, Auger (Includes item 20) |
| | 01311.0000 | 4 | Screw, Truss Head #8 - 32 x .25" |
| 19 | 26401.0000 | 1 | Dust Seal, Hopper Motor |
| 20 | 26247.0000 | 1 | Pin, Spring .094" Dia. x 1.0" |



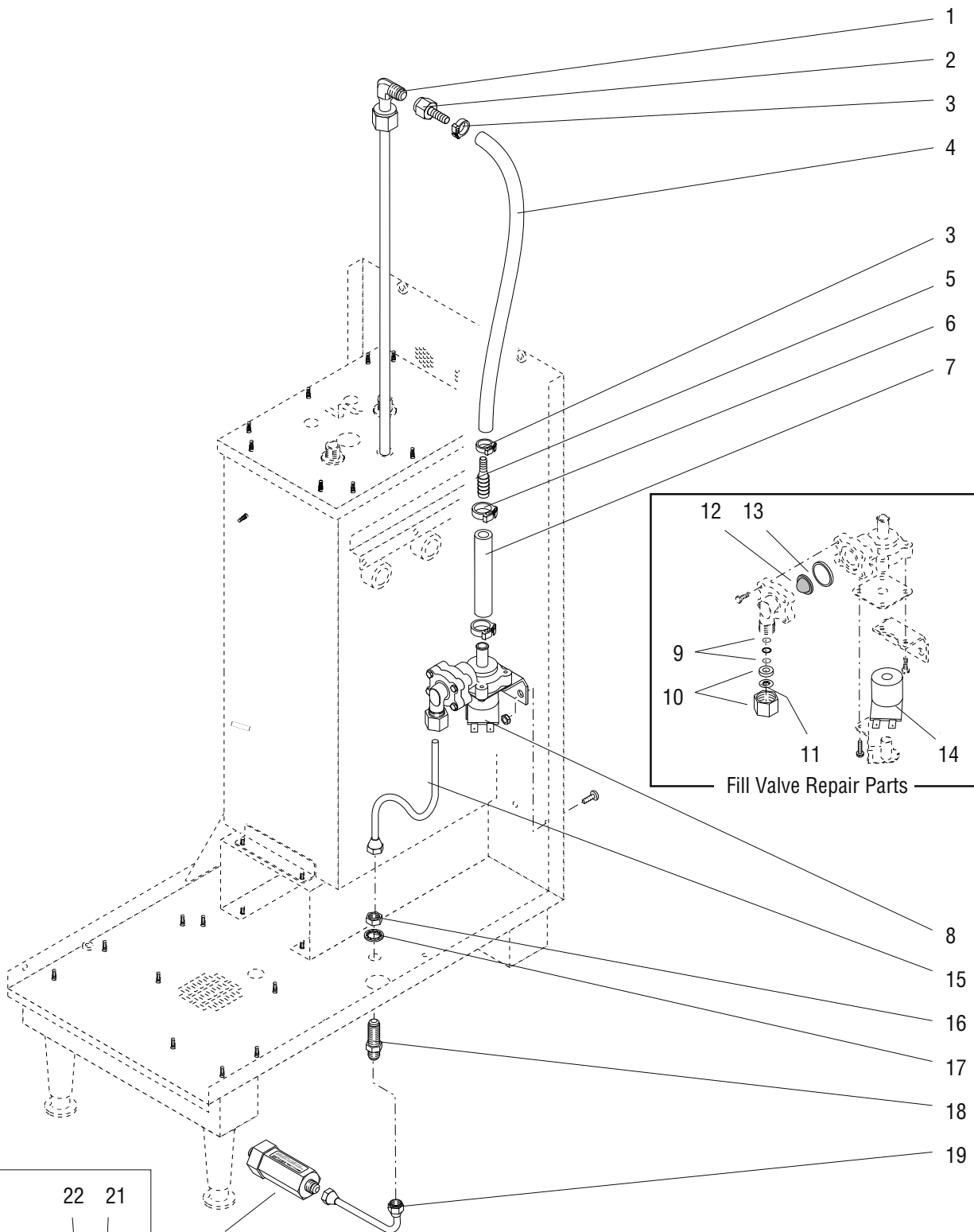
MIXING/WHIPPER CHAMBER AND DRIVE MOTOR

| ITEM | PART NO. | QTY. | DESCRIPTION |
|------|------------|------|--|
| 1 | 26926.0000 | 1 | Plate, Fan Mounting |
| | 01311.0001 | 4 | Screw, Locking Truss Head #8 - 32 x .25" |
| 2 | 26392.0000 | 1 | Fan Assembly |
| 3 | 26244.1000 | 1 | Tube, Exhaust |
| | 01384.0000 | 4 | Screw, Truss Head #8 - 32 x 1.50" |
| | 00970.0000 | 4 | Nut, Keps #8 - 32 |
| 4 | 25732.0000 | 1 | Steam Collector |
| 5 | 25733.0000 | 1 | Mixing Chamber |
| 6 | 25734.0000 | 1 | Whipper Chamber |
| 7 | 25736.0000 | 1 | Dispense Tip |
| 8 | 24733.0010 | 1 | O-Ring |
| 9 | 25902.0000 | 1 | Frother |
| 10 | 26359.0000 | 1 | Receptacle, Whipper Chamber |
| | 02328.0003 | 2 | Screw, Pan Head #6 - 32 x .312" |
| 11 | 26356.0000 | 1 | Seal, Shaft |
| 12 | 26355.0000 | 1 | Washer, Teflon |
| 13 | 24331.0000 | 1 | O-Ring |
| 14 | 26393.1000 | 1 | Motor, Whipper (Includes item 15) |
| | 02324.0000 | 2 | Nut, Acorn - High Crown #8 - 32 |
| 15 | 34179.0000 | 1 | Plate |



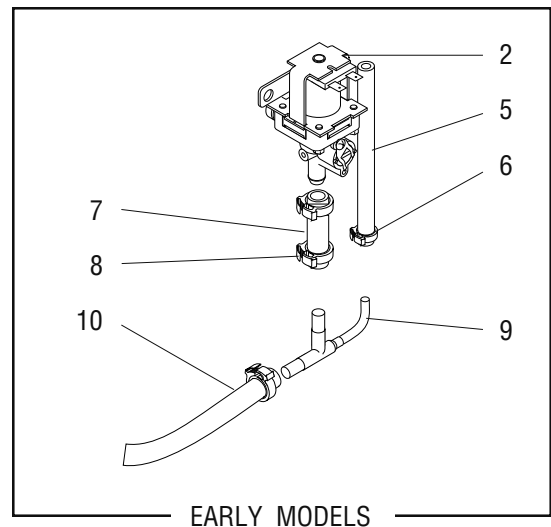
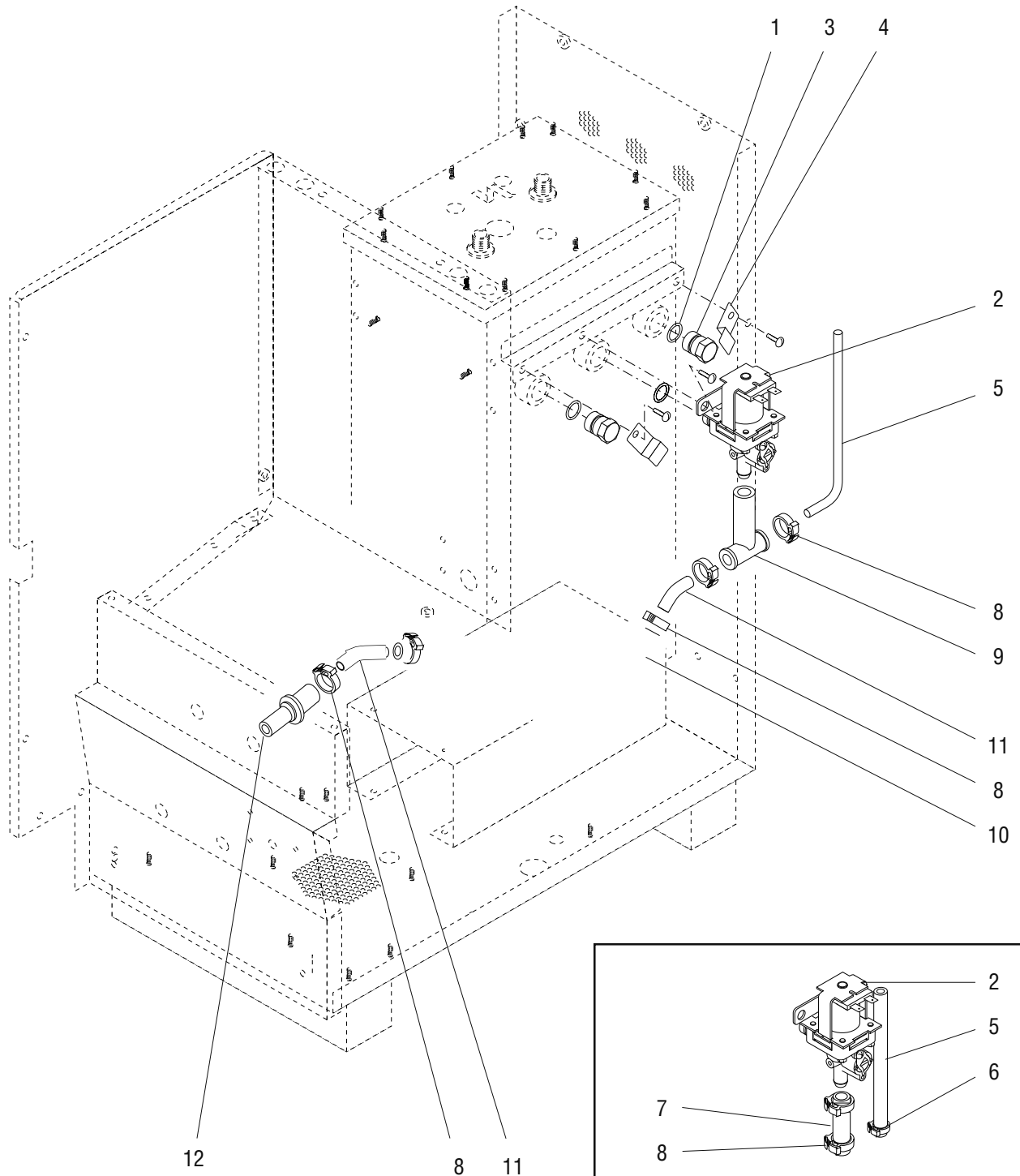
TANK, HEATER AND OVERFLOW PROTECTION

| ITEM | PART NO. | QTY. | DESCRIPTION |
|------|------------|------|--|
| 1 | 23199.0002 | 1 | Lid, Tank |
| | 00908.0000 | 10 | Nut, Hex #8 - 32 |
| 2 | 22978.0000 | 1 | Gasket, Tank Lid |
| 3 | 00943.0000 | 2 | Gasket, Tank Heater |
| 4 | 20201.4151 | 1 | Tank Heater Kit, 1700W 120V |
| | 20201.4150 | 1 | Tank Heater Kit, 1800W 120V |
| | 20201.0750 | 1 | Tank Heater Kit, 3500W 240V |
| | | | Includes item 3 |
| 5 | 24547.0001 | 1 | Tank |
| | 00970.0000 | 2 | Nut, Keps #8 - 32 |
| | 02332.0002 | 2 | Screw, Truss Head #8 - 32 x .375" BLK |
| 6 | 26636.0000 | 1 | Bracket, Tank Mounting |
| | 00970.0000 | 2 | Nut, Keps #8 - 32 |
| 7 | 00942.0000 | 2 | Nut, Hex .50" - 20 |
| 8 | 02536.0000 | 2 | Grommet .375" I.D. |
| 9 | 26665.1000 | 1 | Probe Kit (Includes items 10, 11 & 12) |
| 10 | 00908.0000 | 1 | Nut, Hex #8 - 32 |
| 11 | 20203.0100 | 1 | Lockwasher, Internal Tooth #8 |
| 12 | 01501.0000 | 1 | Washer, Flat .16" I.D. x .375" O.D. |
| 13 | 26503.0000 | 1 | Tube Assy, Overflow (Includes item 14) |
| 14 | 00929.0001 | 1 | Nut/Sleeve, Compression .375" Tube |
| 15 | 29329.1000 | 1 | Thermostat, Limit |
| 16 | 03803.0000 | 1 | Switch Assy, Liquid Level (Includes items 17, 18 & 19) |
| | 00946.0000 | 1 | Nut, Hex .125" FPT |
| 17 | 03807.0000 | 1 | Clip, Spring |
| 18 | ----- | 3 | Washer, Adjusting (DO NOT USE IN THIS APPLICATION) |
| 19 | 03633.0000 | 2 | Gasket, Float Switch (Only 1 used in this application) |
| 20 | 12552.0000 | 1 | Overflow Cup |
| | 00908.0000 | 2 | Nut, Hex #8 - 32 |
| 21 | 12422.0000 | 2 | Clamp, Hose .47"/.54" I.D. |
| 22 | ----- | 1 | Tube, Silicone .312" I.D. x 17.00" (Order item 25) |
| 23 | 26494.0000 | 1 | Tube, 45° .375" O.D. |
| 24 | 01570.0000 | 2 | Wire Nut, 2 - 24 AWG |
| 25 | 03236.1001 | - | Tube, Silicone .312" I.D. x 36.00" |
| | 03236.1002 | - | Tube, Silicone .312" I.D. x 120.00" |
| | 03236.1003 | - | Tube, Silicone .312" I.D. x 60.00" |
| | | | Not illustrated |



STRAINER, SOLENOID, FILL VALVE AND LINES

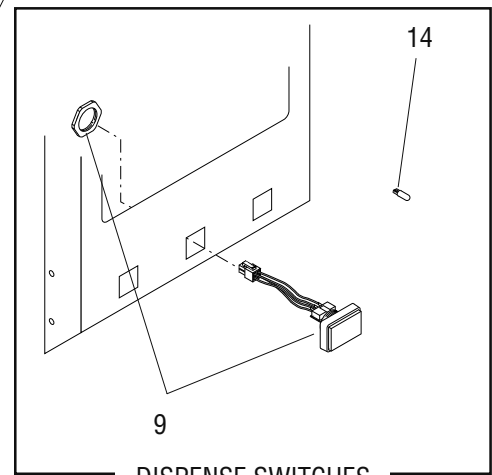
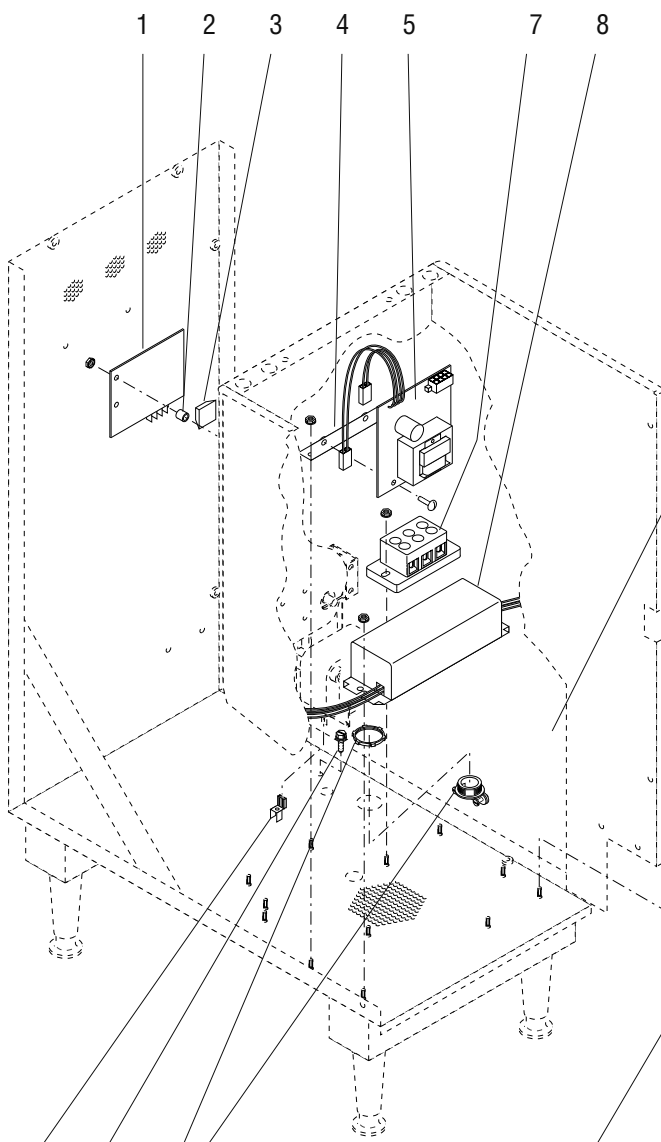
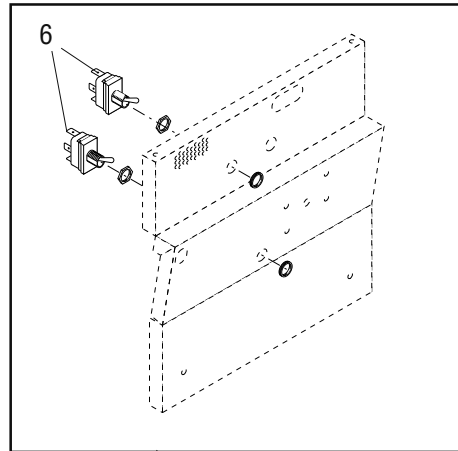
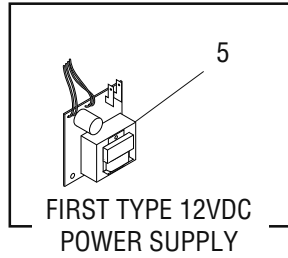
| ITEM | PART NO. | QTY. | DESCRIPTION | |
|------|------------|------|---|---------------------------|
| 1 | 20202.0100 | 1 | Tube, Tank Fill | |
| 2 | 00425.0000 | 1 | Fitting .25" Flare Nut x .25" Barb | |
| 3 | 12422.0000 | 2 | Clamp, Hose .47"/.54" I.D. | |
| 4 | ----- | 1 | Tube, Silicone .25" I.D. x .50" O.D. x 13.0" (Order item 25) | |
| 5 | 26443.0000 | 1 | Reducer Barb .375" x .25" | |
| 6 | 12422.0001 | 2 | Clamp, Hose .59"/.66" I.D. | |
| 7 | ----- | 1 | Tube, Silicone .375" I.D. x .625" O.D. x 6.0" (Order item 26) | |
| 8 | 26135.0001 | 1 | Valve, Solenoid 120V | |
| | 02331.0001 | 2 | Screw, Truss Head #10 - 32 | |
| | 00971.0000 | 2 | Nut, Keps #10 - 32 | |
| 9 | 26275.0000 | 2 | O-Ring | } Fill Valve Repair Parts |
| 10 | ----- | 1 | Nut/Spacer | |
| 11 | ----- | 1 | Grab Ring | |
| 12 | 25998.0000 | 1 | Screen, Valve | |
| 13 | 25999.0000 | 1 | Gasket, Valve Body | |
| 14 | 26278.0000 | 1 | Coil Assy, 120V | |
| 15 | 26661.0000 | 1 | Tube Assy, Water Inlet | |
| 16 | 00463.0000 | 1 | Nut, Hex .438" - 20 | |
| 17 | 01532.0000 | 1 | Lockwasher, Internal Tooth .438" | |
| 18 | 00459.0000 | 1 | Fitting, Bulkhead | |
| 19 | 21812.0010 | 1 | Tube Assy | |
| 20 | 23820.1000 | 1 | Water Strainer Assy (Includes item 21 thru 24) | |
| 21 | ----- | 1 | Body (Not available order item 20) | |
| 22 | 22267.0002 | 1 | Decal, Strainer | |
| 23 | 23721.0000 | 1 | Screen | |
| 24 | 22249.0000 | 1 | End Cap | |
| 25 | 11707.1000 | - | Tube, Silicone .25" I.D. x .50" O.D. x 12.0" | |
| | 11707.1001 | - | Tube, Silicone .25" I.D. x .50" O.D. x 36.0" | |
| | 11707.1002 | - | Tube, Silicone .25" I.D. x .50" O.D. x 120.0" | |
| 26 | 20976.1000 | - | Tube, Silicone .375" I.D. x .625" O.D. x 12.0" | |
| | 20976.1001 | - | Tube, Silicone .375" I.D. x .625" O.D. x 36.0" | |
| | 20976.1002 | - | Tube, Silicone .375" I.D. x .625" O.D. x 120.0" | |
| 27 | 26131.0000 | - | Kit, Nut/O-Ring (Includes items 9,10 & 11) | |



EARLY MODELS

DISPENSE VALVE AND LINES

| ITEM | PART NO. | QTY. | DESCRIPTION |
|------|------------|------|--|
| 1 | 24733.0011 | 3 | O-Ring |
| 2 | 26116.0000 | 1 | Valve, Liquid Dispense |
| | 02331.0000 | 1 | Screw, Truss Head #10 - 32 x .375" |
| 3 | 26369.0000 | 2 | Plug, O-Ring |
| 4 | 26395.0000 | 2 | Retainer, Plug |
| | 02331.0000 | 2 | Screw, Truss Head #10 - 32 x .375" |
| 5 | ----- | 1 | Tube, Vent Silicone .25" I.D. x .50" O.D. x 5.25" (Order item 13) (Early models) |
| | 21810.0005 | 1 | Tube, Vent .25" O.D. x 1.31" x 6.0" (Late models) |
| 6 | 12422.0000 | 1 | Clamp, Hose .47"/.54" I.D. (Early models only) |
| 7 | ----- | 1 | Tube, Silicone .375" I.D. x .625" O.D. x 1.60" (Order item 14) (Early models only) |
| 8 | 12422.0001 | 5 | Clamp, Hose .59"/.66" I.D. |
| 9 | ----- | 1 | Tee/Tube, Dispense valve (Early models) (Not available order item 15) |
| | 26932.0000 | 1 | Tee, Dispense valve (Late models) |
| 10 | ----- | - | Tube, Silicone .375" I.D. x .625" O.D. x 13.375" (Order item 14) |
| 11 | 26494.0000 | 2 | Tube, 45°, .375" O.D. (1 less used on Early models) |
| 12 | 25803.0000 | 1 | Water Inlet, Mixing Chamber |
| 13 | 11707.1000 | - | Tube, Silicone .25" I.D. x .50" O.D. x 12.0" |
| | 11707.1001 | - | Tube, Silicone .25" I.D. x .50" O.D. x 36.0" |
| | 11707.1002 | - | Tube, Silicone .25" I.D. x .50" O.D. x 120.0" |
| 14 | 20976.1000 | - | Tube, Silicone .375" I.D. x .625" O.D. x 12.0" |
| | 20976.1001 | - | Tube, Silicone .375" I.D. x .625" O.D. x 36.0" |
| | 20976.1002 | - | Tube, Silicone .375" I.D. x .625" O.D. x 120.0" |
| 15 | 26942.0000 | - | Tee Replacement Kit, Dispense Valve (Converts first type Dispense Valve Tee to second type. Includes 2 of item 8 & 1 each of items 5, 9, & 11) |



ELECTRICAL CONTROLS

| ITEM | PART NO. | QTY. | DESCRIPTION |
|------|------------|------|--|
| 1 | 07074.1000 | 1 | Control Board, Level - 120V 5 SEC |
| | 00970.0000 | 2 | Nut, Keps #8 - 32 |
| 2 | 00450.0000 | 2 | Spacer .219" I.D. x .34" LG |
| 3 | 02547.0000 | 1 | Foot, Rubber |
| 4 | 26663.0000 | 1 | Bracket, Power Supply Mounting |
| | 00970.0000 | 2 | Nut, Keps #8 - 32 |
| 5 | ----- | 1 | Circuit Board, Power Supply 12VDC (Early Models) (Not available order item 21) |
| | 26677.0000 | 1 | Circuit Board, Power Supply/Hopper Delay 12VDC (Late Models) |
| | 01311.0000 | 2 | Screw, Truss Head #8 - 32 x .25" |
| 6 | 05761.0000 | 2 | Switch, Toggle ON/ON SPDT (Includes mounting nuts) |
| 7 | 07038.0000 | 1 | Terminal Block, 3 Pole - RED/WHT/BLK |
| | 00970.0000 | 2 | Nut, Keps #8 - 32 |
| 8 | 26538.0000 | 1 | Ballast, 120V-60HZ W/Terminals |
| | 00970.0000 | 2 | Nut, Keps #8 - 32 |
| 9 | 26559.0000 | 1 | Dispense Switch Assembly, Illuminated W/Terminals (Includes mounting nut) |
| 10 | 26527.1002 | 1 | Thermostat/Bracket Assembly 120V |
| | 00970.0000 | 2 | Nut, Keps #8 - 32 |
| 11 | 12570.0000 | 1 | Grommet |
| 12 | 01685.0000 | 1 | Connector, Cord |
| 13 | 01309.0000 | 1 | Ground Screw W/Terminal Washer #10 - 32 x .50" |
| 14 | 26405.0000 | - | Lamp, LED (Use as required) |
| 15 | 04502.0000 | 1 | Connector, Terminal |
| 16 | 01713.1000 | 1 | Cord Assembly, Power (120V 15Amp Models only) |
| | 23799.0001 | 1 | Cord Assembly, Power (120V 20Amp Models only) |
| 17 | 26565.0000 | 1 | Wiring Harness, Control - 120V |
| | 26565.0001 | 1 | Wiring Harness, Control - 120/240V |
| 18 | ----- | 1 | Wiring Harness, Door Interconnect |
| 19 | ----- | 1 | Wiring Harness, Door |
| 20 | 26666.0000 | 1 | Wiring Harness, Hopper Delay (Late Models) |
| 21 | 26765.0000 | - | Kit, Circuit Board (Converts First Type 12VDC Power Supply to Second Type 12VDC Power Supply/Hopper Delay) |

See Door, Lamps
and Panels

Not Illustrated

NUMERICAL INDEX

| PART NO. | PAGE NO. | PART NO. | PAGE NO. | PART NO. | PAGE NO. | PART NO. | PAGE NO. |
|------------|----------|------------|----------|------------|----------|------------|----------|
| 00425.0000 | 15 | 12552.0000 | 13 | 25998.0000 | 15 | 26666.0000 | 19 |
| 00450.0000 | 19 | 12570.0000 | 19 | 25999.0000 | 15 | 26667.0000 | 5 |
| 00459.0001 | 15 | 13255.0003 | 5 | 26112.0000 | 9 | 26677.0000 | 19 |
| 00463.0000 | 15 | 20201.0750 | 13 | 26116.0000 | 17 | 26680.0000 | 9 |
| 00619.0010 | 7 | 20201.4150 | 13 | 26131.000 | 15 | 26702.0001 | 5 |
| 00656.0000 | 5 | 20201.4151 | 13 | 26135.0001 | 15 | 26751.0000 | 5 |
| 00831.0000 | 5 | 20202.0100 | 15 | 26232.0000 | 5 | 26752.0000 | 7 |
| 00906.0000 | 9 | 20203.0100 | 13 | 26232.0001 | 5 | 26752.0001 | 7 |
| 00908.0000 | 13 | 20621.0000 | 5 | 26233.0001 | 5 | 26754.0000 | 9 |
| 00929.0001 | 13 | 20960.0000 | 9 | 26238.0001 | 9 | 26756.0000 | 7 |
| 00942.0000 | 13 | 20976.1000 | 15,17 | 26239.0000 | 7 | 26757.0000 | 5 |
| 00943.0000 | 13 | 20976.1001 | 15,17 | 26244.1000 | 11 | 26765.0000 | 19 |
| 00946.0000 | 13 | 20976.1002 | 15,17 | 26247.0000 | 9 | 26886.1000 | 5 |
| 00970.0000 | 11,13,19 | 21355.0000 | 9 | 26275.0000 | 15 | 26892.0000 | 7 |
| 00971.0000 | 15 | 21357.0000 | 9 | 26278.0000 | 15 | 26926.0000 | 11 |
| 00991.0002 | 5 | 21358.0000 | 9 | 26348.0000 | 7 | 26932.0000 | 17 |
| 01309.0000 | 19 | 21745.0000 | 9 | 26350.0000 | 7 | 26940.0001 | 9 |
| 01311.0000 | 5,7,9,19 | 21746.0000 | 9 | 26353.0000 | 7 | 26942.0000 | 17 |
| 01311.0001 | 5,9,11 | 21747.0000 | 9 | 26354.0000 | 7 | 29329.1000 | 15 |
| 01311.0003 | 5 | 21810.0005 | 17 | 26355.0000 | 11 | 34179.0000 | 11 |
| 01384.0000 | 11 | 21812.0010 | 15 | 26356.0000 | 11 | | |
| 01501.0000 | 13 | 22249.0000 | 15 | 26359.0000 | 11 | | |
| 01520.0000 | 9 | 22267.0002 | 15 | 26369.0000 | 17 | | |
| 01522.0000 | 9 | 22978.0000 | 13 | 26392.0000 | 11 | | |
| 01532.0000 | 15 | 23199.0002 | 13 | 26393.1000 | 11 | | |
| 01570.0000 | 13 | 23721.0000 | 15 | 26395.0000 | 17 | | |
| 01685.0000 | 19 | 23799.0001 | 19 | 26401.0000 | 9 | | |
| 01713.1000 | 19 | 23820.1000 | 15 | 26405.0000 | 19 | | |
| 02308.0000 | 5,7 | 24331.0000 | 11 | 26443.0000 | 15 | | |
| 02324.0000 | 11 | 24547.0001 | 13 | 26444.0000 | 7 | | |
| 02328.0003 | 11 | 24733.0010 | 11 | 26494.0000 | 13,17 | | |
| 02331.0000 | 5,7,17 | 24733.0011 | 17 | 26503.0000 | 13 | | |
| 02331.0001 | 5,15 | 25414.0000 | 5 | 26504.0000 | 5 | | |
| 02332.0002 | 13 | 25414.0001 | 5 | 26506.0000 | 7 | | |
| 02361.0000 | 7 | 25732.0000 | 11 | 26507.0000 | 7 | | |
| 02536.0000 | 13 | 25733.0000 | 11 | 26509.0000 | 5 | | |
| 02547.0000 | 19 | 25734.0000 | 11 | 26520.0000 | 7 | | |
| 03236.1001 | 13 | 25736.0000 | 11 | 26520.0001 | 7 | | |
| 03236.1002 | 13 | 25744.0000 | 9 | 26521.0001 | 7 | | |
| 03236.1003 | 13 | 25794.0000 | 9 | 26523.0000 | 5 | | |
| 03633.0000 | 13 | 25796.0000 | 5 | 26524.0000 | 5 | | |
| 03803.0000 | 13 | 25796.0001 | 5 | 26525.0001 | 7 | | |
| 03807.0000 | 13 | 25803.0000 | 17 | 26527.1002 | 19 | | |
| 03996.0000 | 5 | 25887.0000 | 5 | 26528.0000 | 5 | | |
| 04502.0000 | 19 | 25887.0001 | 5 | 26532.0001 | 5 | | |
| 05761.0000 | 19 | 25891.0000 | 9 | 26537.0000 | 7 | | |
| 05920.0000 | 7 | 25892.0000 | 9 | 26538.0000 | 19 | | |
| 07038.0000 | 19 | 25894.1000 | 9 | 26539.0000 | 7 | | |
| 07074.1000 | 19 | 25895.0000 | 9 | 26559.0000 | 19 | | |
| 11646.0000 | 7 | 25897.0000 | 7 | 26565.0000 | 19 | | |
| 11707.1000 | 15,17 | 25898.0000 | 7 | 26565.0001 | 19 | | |
| 11707.1001 | 15,17 | 25901.0000 | 5 | 26576.0001 | 5 | | |
| 11707.1002 | 15,17 | 25901.0001 | 5 | 26636.0000 | 13 | | |
| 12368.0001 | 5 | 25902.0000 | 11 | 26661.0000 | 15 | | |
| 12422.0000 | 13,15,17 | 25903.0000 | 9 | 26663.0000 | 19 | | |
| 12422.0001 | 15,17 | 25904.0000 | 9 | 26665.1000 | 13 | | |