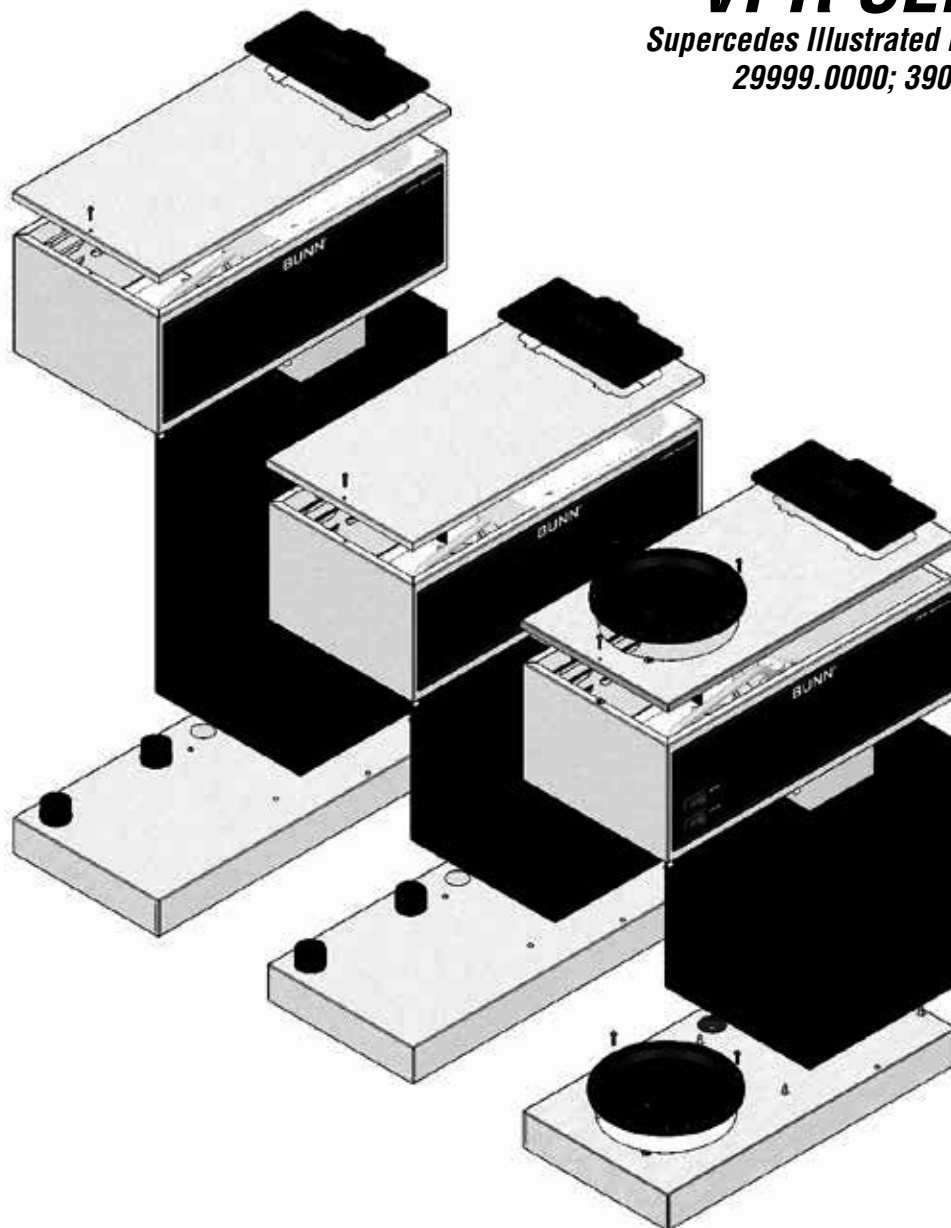


BUNN®

VPR SERIES

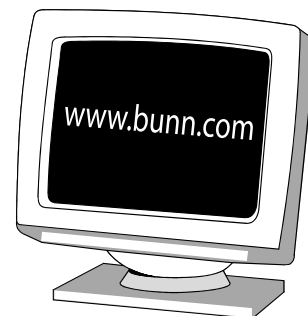
Supersedes Illustrated Parts Catalogs:
29999.0000; 39065.0000



ILLUSTRATED PARTS CATALOG

Designs, materials, weights, specifications, and dimensions for equipment or replacement parts are subject to change without notice.

BUNN-O-MATIC CORPORATION
POST OFFICE BOX 3227
SPRINGFIELD, ILLINOIS 62708-3227
PHONE: (217) 529-6601 FAX: (217) 529-6644



BUNN-O-MATIC COMMERCIAL PRODUCT WARRANTY

Bunn-O-Matic Corp. ("BUNN") warrants equipment manufactured by it as follows:

- 1) Airpots, thermal carafes, decanters, GPR servers, iced tea/coffee dispensers, MCP/MCA pod brewers thermal servers and ThermoFresh servers (mechanical and digital)- 1 year parts and 1 year labor.
- 2) All other equipment - 2 years parts and 1 year labor plus added warranties as specified below:
 - a) Electronic circuit and/or control boards - parts and labor for 3 years.
 - b) Compressors on refrigeration equipment - 5 years parts and 1 year labor.
 - c) Grinding burrs on coffee grinding equipment to grind coffee to meet original factory screen sieve analysis - parts and labor for 4 years or 40,000 pounds of coffee, whichever comes first.

These warranty periods run from the date of installation BUNN warrants that the equipment manufactured by it will be commercially free of defects in material and workmanship existing at the time of manufacture and appearing within the applicable warranty period. This warranty does not apply to any equipment, component or part that was not manufactured by BUNN or that, in BUNN's judgment, has been affected by misuse, neglect, alteration, improper installation or operation, improper maintenance or repair, non periodic cleaning and descaling, equipment failures related to poor water quality, damage or casualty. In addition, the warranty does not apply to replacement of items subject to normal use including but not limited to user replaceable parts such as seals and gaskets. This warranty is conditioned on the Buyer 1) giving BUNN prompt notice of any claim to be made under this warranty by telephone at (217) 529-6601 or by writing to Post Office Box 3227, Springfield, Illinois 62708-3227; 2) if requested by BUNN, shipping the defective equipment prepaid to an authorized BUNN service location; and 3) receiving prior authorization from BUNN that the defective equipment is under warranty.

THE FOREGOING WARRANTY IS EXCLUSIVE AND IS IN LIEU OF ANY OTHER WARRANTY, WRITTEN OR ORAL, EXPRESS OR IMPLIED, INCLUDING, BUT NOT LIMITED TO, ANY IMPLIED WARRANTY OF EITHER MERCHANTABILITY OR FITNESS FOR A PARTICULAR PURPOSE. The agents, dealers or employees of BUNN are not authorized to make modifications to this warranty or to make additional warranties that are binding on BUNN. Accordingly, statements by such individuals, whether oral or written, do not constitute warranties and should not be relied upon.

If BUNN determines in its sole discretion that the equipment does not conform to the warranty, BUNN, at its exclusive option while the equipment is under warranty, shall either 1) provide at no charge replacement parts and/or labor (during the applicable parts and labor warranty periods specified above) to repair the defective components, provided that this repair is done by a BUNN Authorized Service Representative; or 2) shall replace the equipment or refund the purchase price for the equipment.

THE BUYER'S REMEDY AGAINST BUNN FOR THE BREACH OF ANY OBLIGATION ARISING OUT OF THE SALE OF THIS EQUIPMENT, WHETHER DERIVED FROM WARRANTY OR OTHERWISE, SHALL BE LIMITED, AT BUNN'S SOLE OPTION AS SPECIFIED HEREIN, TO REPAIR, REPLACEMENT OR REFUND.

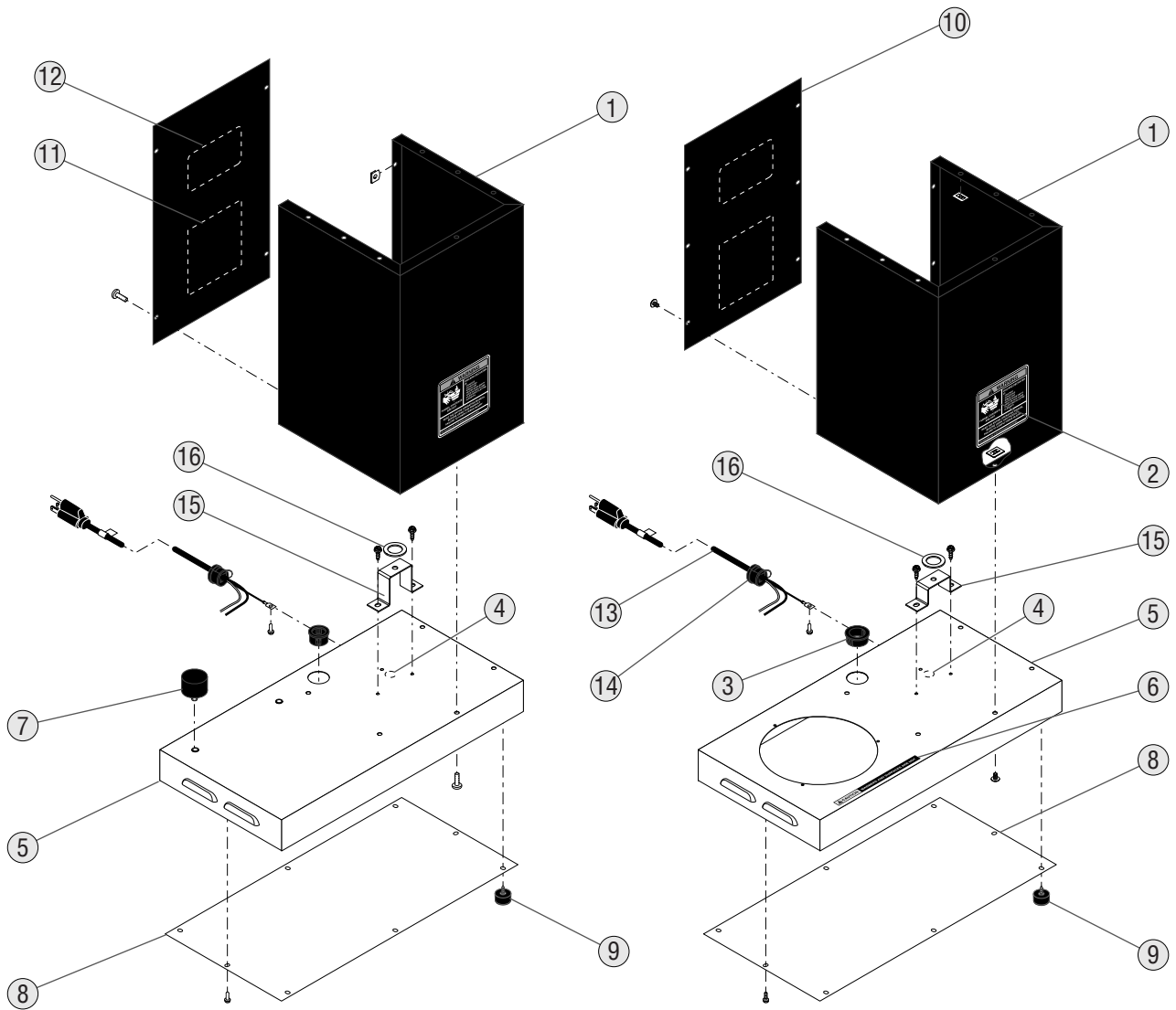
In no event shall BUNN be liable for any other damage or loss, including, but not limited to, lost profits, lost sales, loss of use of equipment, claims of Buyer's customers, cost of capital, cost of down time, cost of substitute equipment, facilities or services, or any other special, incidental or consequential damages.

392, AutoPOD, AXIOM, BrewLOGIC, BrewMETER, Brew Better Not Bitter, BrewWISE, BrewWIZARD, BUNN Espresso, BUNN Family Gourmet, BUNN Gourmet, BUNN Pour-O-Matic, BUNN, BUNN with the stylized red line, BUNNlink, Bunn-OMatic, Bunn-O-Matic, BUNNserve, BUNNSERVE with the stylized wrench design, Cool Froth, DBC, Dr. Brew stylized Dr. design, Dual, Easy Pour, EasyClear, EasyGard, FlavorGard, Gourmet Ice, Gourmet Juice, High Intensity, iMIX, Infusion Series, Intellisteam, My Café, Phase Brew, PowerLogic, Quality Beverage Equipment Worldwide, Respect Earth, Respect Earth with the stylized leaf and coffee cherry design, Safety-Fresh, savemycoffee.com, Scale-Pro, Silver Series, Single, Smart Funnel, Smart Hopper, SmartWAVE, Soft Heat, SplashGard, The Mark of Quality in Beverage Equipment Worldwide, ThermoFresh, Titan, trifecta, Velocity Brew, A Partner You Can Count On, Air Brew, Air Infusion, Beverage Bar Creator, Beverage Profit Calculator, Brew better, not bitter., BUNNSource, Coffee At Its Best, Cyclonic Heating System, Daypart, Digital Brewer Control, Nothing Brews Like a BUNN, Pouring Profits, Signature Series, Tea At Its Best, The Horizontal Red Line, Ultra are either trademarks or registered trademarks of Bunn-O-Matic Corporation.

TABLE OF CONTENTS

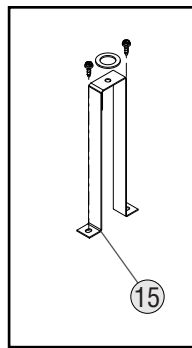
| | |
|---|----|
| Trunk, Base and Panels | 4 |
| Hood, and Top Covers | 6 |
| Fill Basin | 8 |
| Early Tank and Components | 10 |
| 3 Tab Tank and Components | 12 |
| Funnels, Pitcher and Filter Basket..... | 14 |
| Warmers and Galley Kit..... | 16 |
| Numerical Index | 18 |

| Fraction | Decimal | | Fraction | Decimal |
|-------------|---------|--|--------------|---------|
| 1/16 | 0.063 | | 9/16 | 0.563 |
| 1/8 | 0.125 | | 5/8 | 0.625 |
| 3/16 | 0.188 | | 11/16 | 0.688 |
| 1/4 | 0.250 | | 3/4 | 0.750 |
| 5/16 | 0.313 | | 13/16 | 0.813 |
| 3/8 | 0.375 | | 7/8 | 0.875 |
| 7/16 | 0.438 | | 15/16 | 0.938 |
| 1/2 | 0.500 | | 1 | 1.000 |



TC Model

Warmer Model



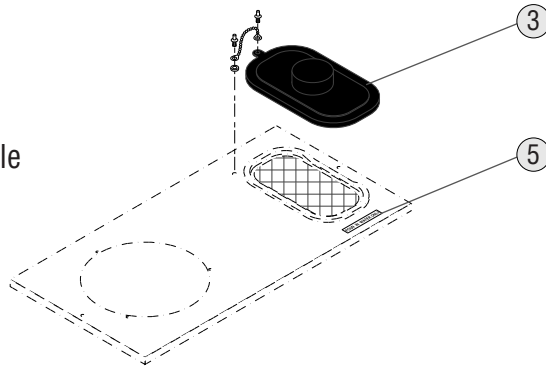
APS Models

TRUNK, BASE AND PANELS

| ITEM | PART NO. | QTY. | DESCRIPTION |
|------|------------|------|---|
| 1 | 33211.1005 | 1 | Housing W/Decal, Trunk (Includes # 2) (TC Models) |
| | 33211.1003 | 1 | Housing W/Decal, Trunk (Includes # 2) (APS Models) |
| | 33767.0000 | 1 | Housing W/Decal, Trunk (Includes item 11) (VPR w/Warmers) |
| 2 | 00658.0000 | 1 | Decal, Caution - Decanter/Funnel |
| 3 | 01592.0000 | 1 | Bushing, Snap - 1.0" Dia (Late Models) |
| | 01663.0000 | 1 | Bushing, Snap - .875" Dia (Early Models) |
| 4 | 00824.0000 | 1 | Decal, Ground |
| 5 | 39002.0002 | 1 | Housing, Base APS/TC |
| | 33766.0000 | 1 | Housing, Base w/Warmer |
| | 36154.0000 | 5 | Screw, Hex Hd, Sltd. #8-32 x .38" |
| 6 | 12364.0000 | 1 | Decal, CAUTION-WARMERS ARE HOT |
| 7 | 00754.0001 | 2 | Locator, Blk .25"-20 x 1.25" (APS/TC Only) |
| 8 | 33210.0000 | 1 | Cover, Base |
| | 02332.0002 | 4 | Screw, Hex-Crimptite #6-32 x .375" |
| 9 | 04198.0001 | - | Kit, Foot (Set of 4) |
| 10 | 33212.1005 | 1 | Panel W/Decals, Rear (Includes # 11, 12) (TC Models) |
| | 33212.1003 | 1 | Panel W/Decals, Rear (Includes # 11, 12) (APS Models) |
| | 33768.0000 | 1 | Panel W/Decals, Rear (Includes # 11, 12) (Warmer Models) |
| | 02322.0002 | 6 | Screw, Truss Head Blk #8-32 x .375" |
| | 00917.0000 | 6 | Fastener, J Type #8-32 |
| 11 | 00831.0000 | 1 | Decal, Warning-Electrical |
| 12 | 37881.0000 | 1 | Decal, Warning No Serviceable Parts |
| 13 | 01637.0000 | 1 | Cord Assembly, Power |
| | 02337.0001 | 1 | Screw, Ground #10 x .375" |
| 14 | 01686.0000 | 1 | Bushing, Strain Relief - Nylon |
| 15 | 39777.0000 | 1 | Bracket, Tank Support (Warmer Model) |
| | 39777.0002 | 1 | Bracket, Tank Support (TC Model) |
| | 40157.0000 | 1 | Bracket, Tank Support (APS Model) |
| | 36154.0000 | 2 | Screw, Hex Hd, Sltd. #8-32 x .38" |
| 16 | 01201.0000 | 1 | Gasket |

Used Only In Late Models
w/New 3 Tab Tank

First Style

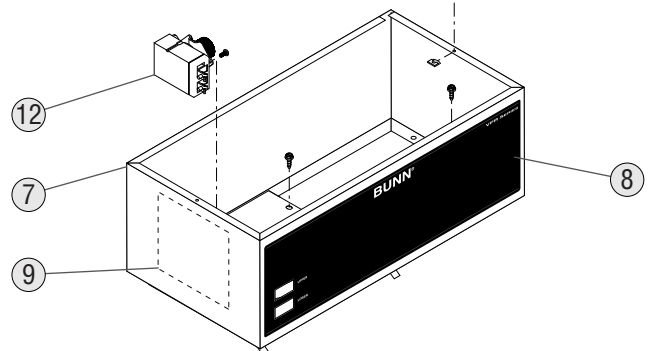
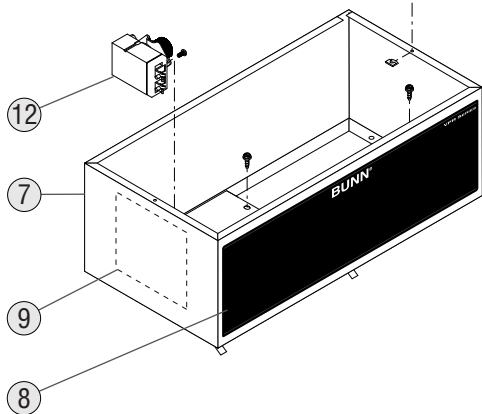
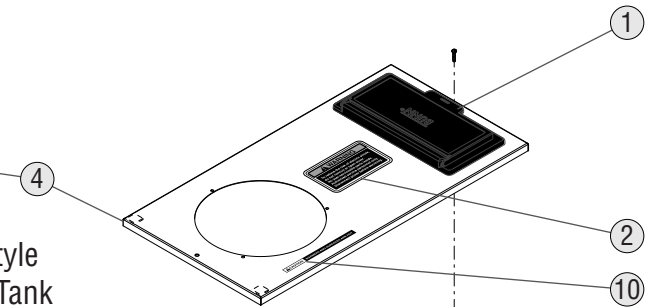
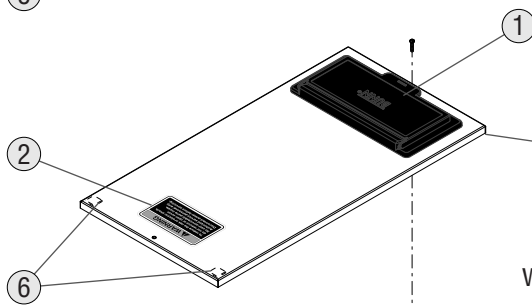
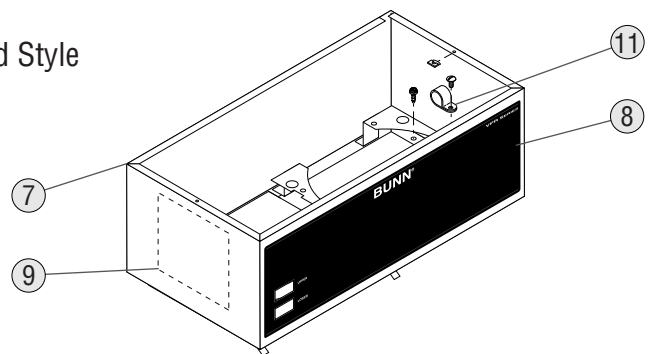
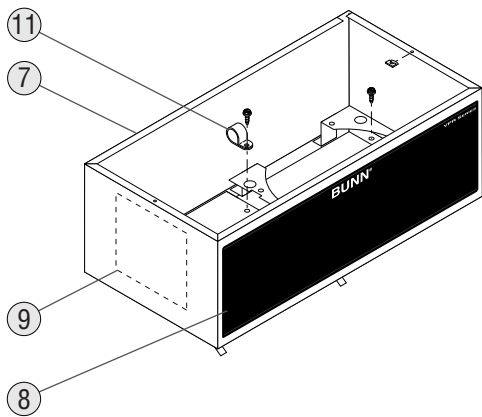


TC/APS Models

Warmer Model

Second Style

Third Style
w/3 Tab Tank

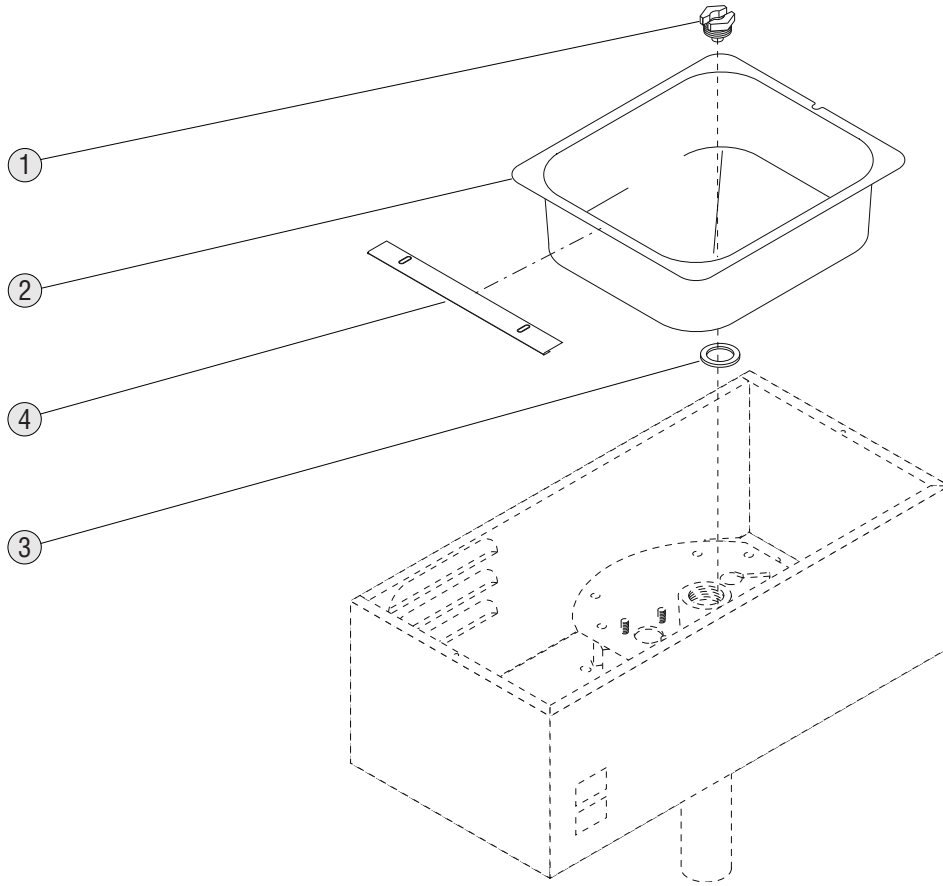


HOOD AND TOP COVER

| ITEM | PART NO. | QTY. | DESCRIPTION |
|------|------------|------|--|
| 1 | 38498.1000 | 1 | Flip Lid Assy (Includes items 2 and 3) |
| 2 | 37881.0000 | 1 | Decal, Warning No Serviceable Parts |
| 3 | 12981.0001 | 1 | Lid/Chain Kit |
| 4 | 37985.1003 | 1 | Cover Assembly, Top (TC/APS) (Includes # 1,2,6) |
| | 33797.0000 | 1 | Cover Assembly, Top (Warmer Model) (Includes # 1,2,6, 10) |
| | 01303.0000 | 2 | Screw, Pan Head #4-40 x .50" |
| | 00916.0000 | 2 | Fastener, J-Type #4-40 |
| 5 | 00833.0000 | 1 | Decal, Pour In Water Only (<i>Not Used On Late Models</i>) |
| 6 | 29894.0000 | 2 | Pad, Adhesive |
| 7 | 33094.1000 | 1 | Hood Assembly, (Includes # 8, 9) APS/TC (Early Style) |
| | 37007.0000 | 1 | Hood Assembly, (Includes # 8, 9) Warmer Model (Early Style) |
| | 36154.0000 | 5 | Screw, Hex Hd, Sltd. #8-32 x .38" |
| | 33094.1001 | 1 | Hood Assembly, (Includes # 8, 9) APS/TC (3 Tab Tank) |
| | 37007.0001 | 1 | Hood Assembly, (Includes # 8, 9) Warmer Model (3 Tab Tank) |
| | 36154.0000 | 6 | Screw, Hex Hd, Sltd. #8-32 x .38" |
| 8 | 33214.0000 | 1 | Decal, Control Panel (w/Switches) |
| | 33214.0003 | 1 | Decal, Control Panel (No Switches) |
| 9 | 33769.0000 | 1 | Decal, Schematic-Electrical |
| 10 | 12364.0000 | 1 | Decal, CAUTION-WARMERS ARE HOT |
| 11 | 00603.0000 | 1 | Clamp |
| | 01315.0000 | 1 | Screw, Truss Head #8-32 x .38" |
| 12 | 02542.0000 | 1 | Thermostat (3 Tab Tank) |
| | 01311.0000 | 2 | Screw, Truss Head (SST) 8-32 x .25" |
| | 00720.0000 | 1 | Knob |

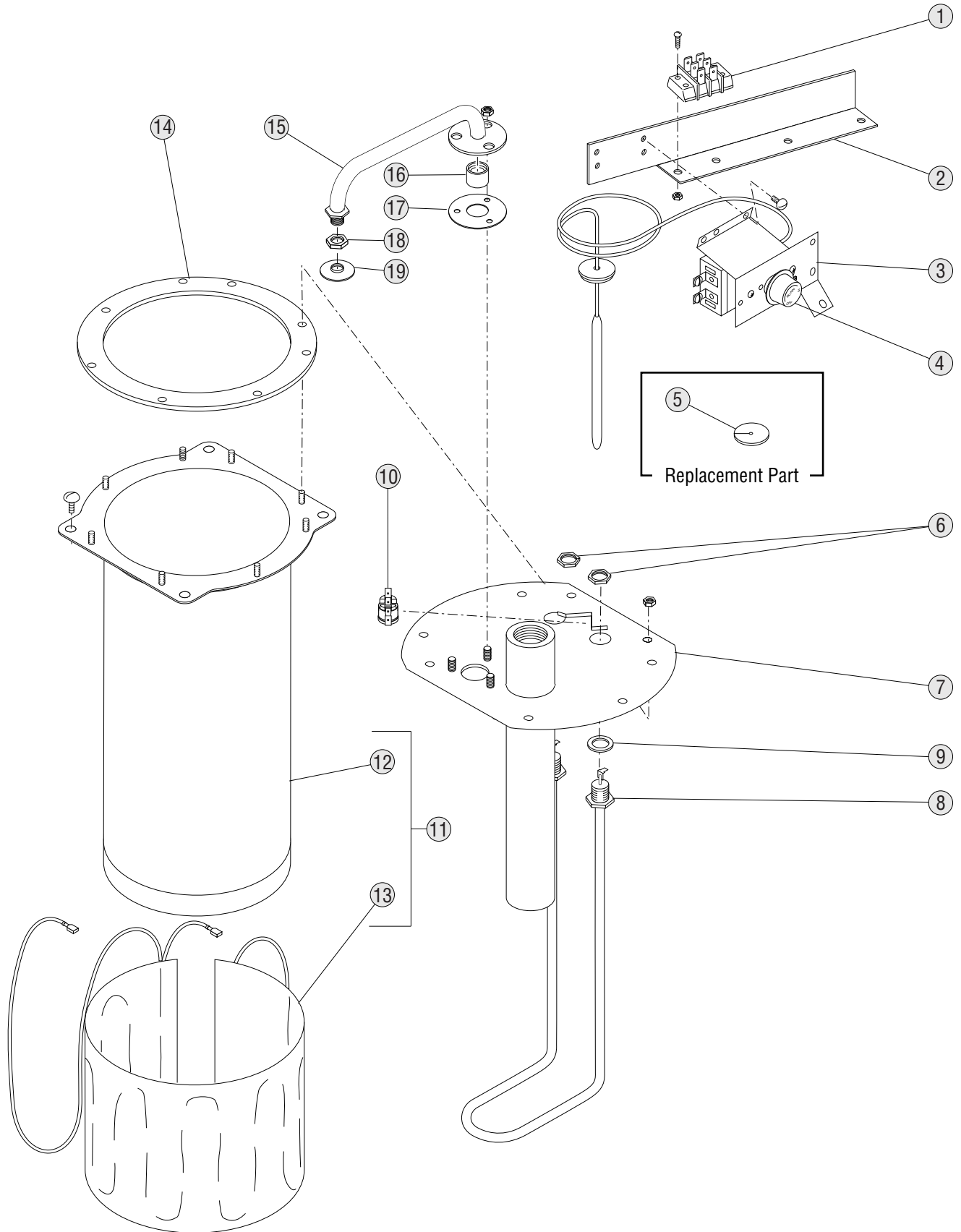
Note: The following items are not illustrated

| | | | |
|----|------------|---|---|
| 13 | 33964.0000 | 1 | Wiring Harness, 120V (Warmer Model) Early Style |
| | 33964.0001 | 1 | Wiring Harness, 120V (APS/TC Model) Early Style |
| | 33964.0002 | 1 | Wiring Harness, 120V (Warmer Model) 3 Tab Tank |
| | 33964.0003 | 1 | Wiring Harness, 120V (APS/TC Model) 3 Tab Tank |



FILL BASIN

| ITEM | PART NO. | QTY. | DESCRIPTION |
|------|------------|------|-----------------------------------|
| 1 | 01200.0000 | 1 | Fitting, Tank Inlet .562" Opening |
| | 01212.0000 | 1 | Fitting, Tank Inlet .382" Opening |
| 2 | 06220.0000 | 1 | Fill Basin (SST) |
| 3 | 01201.0000 | 1 | Gasket, Tank Inlet |
| 4 | 11424.0000 | 1 | Plate, Splash Guard |

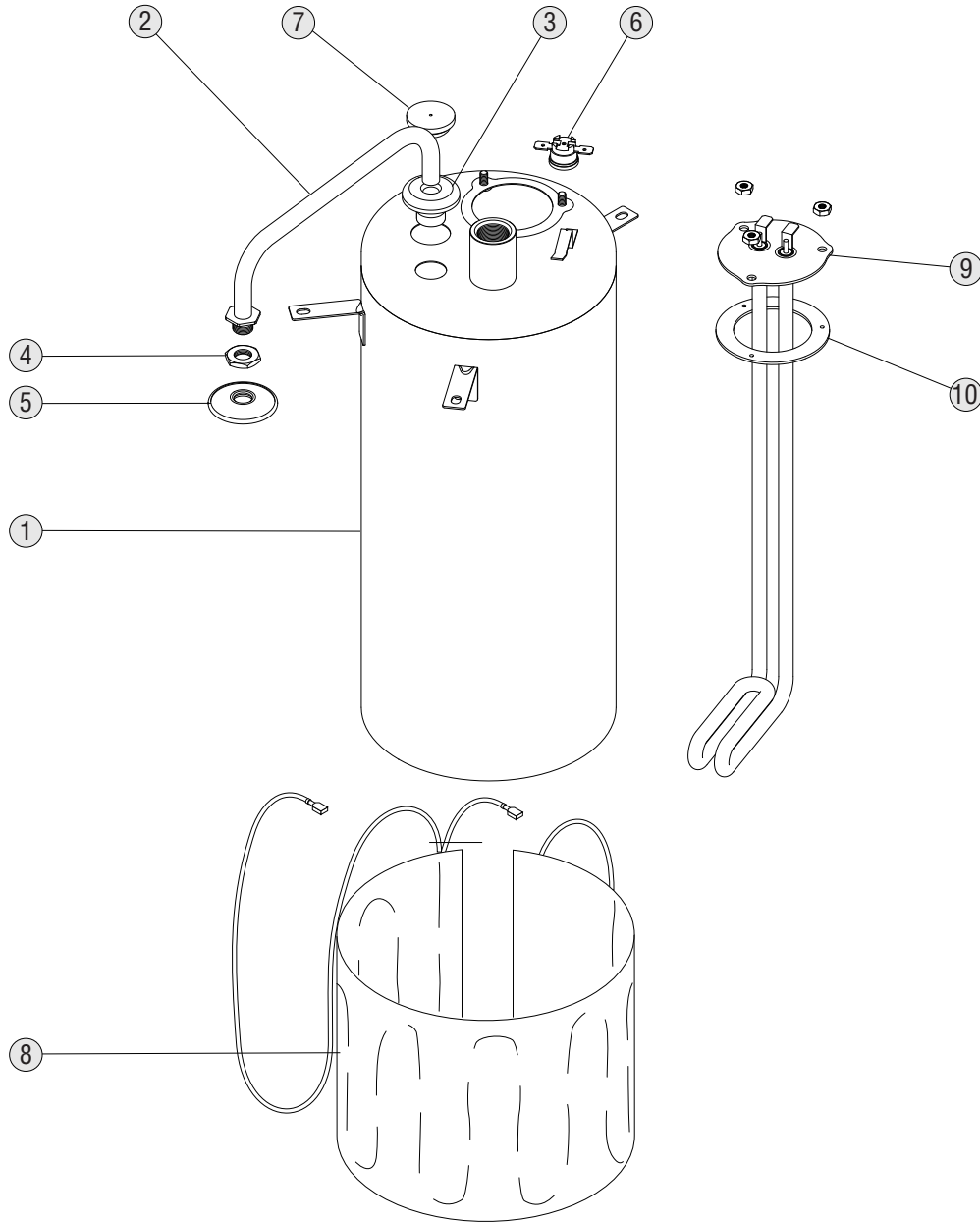


TANK AND COMPONENTS - EARLY MODELS

| ITEM | PART NO. | QTY. | DESCRIPTION |
|------|------------|------|--|
| - | 05697.0006 | 1 | Tank Assembly, 1320W 120V (Includes items 1 thru 17 & 20 thru 23) |
| | 01315.0000 | 2 | Screw, Truss Head (SST) 8-32 x .38" |
| 1 | 04309.0000 | 1 | Terminal Block |
| | 01390.0000 | 2 | Screw, Round Head (SST) 8-32 x .62" |
| | 00970.0000 | 2 | Nut, Keps 8-32 |
| 2 | 04307.0000 | 1 | Bracket Assembly, Thermostat/Terminal Block Mounting |
| 3 | 28319.0000 | 1 | Thermostat Kit (Includes items 4 & 5) |
| | 01311.0000 | 2 | Screw, Truss Head (SST) 8-32 x .25" |
| | 20762.0000 | 2 | Screw, Binding Head 8-32 x .25" (Terminal Screws) |
| 4 | 00720.0000 | 1 | Knob, Thermostat |
| 5 | 07073.1000 | 1 | Grommet, Thermostat |
| 6 | 00942.0000 | 2 | Nut, Hex - Brass .50"-20 |
| 7 | 05545.0000 | 1 | Tank Lid Assembly |
| | 00908.0000 | 8 | Nut, Hex 8-32 |
| 8 | 04236.1000 | 1 | Tank Heater Kit 1320W 120V (Includes item 9) |
| 9 | 00943.0000 | 2 | Gasket, Tank Heater |
| 10 | 29329.1000 | 1 | Thermostat, Limit |
| 11 | 04119.0001 | 1 | Tank W/Blanket Warmer 120V (Includes items 12 & 13) |
| 12 | 04118.0000 | 1 | Tank |
| 13 | 20264.0000 | 1 | Blanket Warmer, 55W 120V |
| 14 | 04221.0000 | 1 | Gasket, Tank Lid |
| 15 | 05555.0002 | 1 | Sprayhead Tube Kit (Includes 3 mounting nuts below, items 16 & 17) |
| | 00908.0000 | 3 | Nut, Hex 8-32 |
| 16 | 05518.0000 | 1 | Hub, Syphon |
| 17 | 05515.0000 | 1 | Gasket, Sprayhead Tube |
| 18 | 01075.0000 | 1 | Nut, Hex .438"-20 |
| 19 | 01082.0000 | 1 | Sprayhead, 6-Hole |

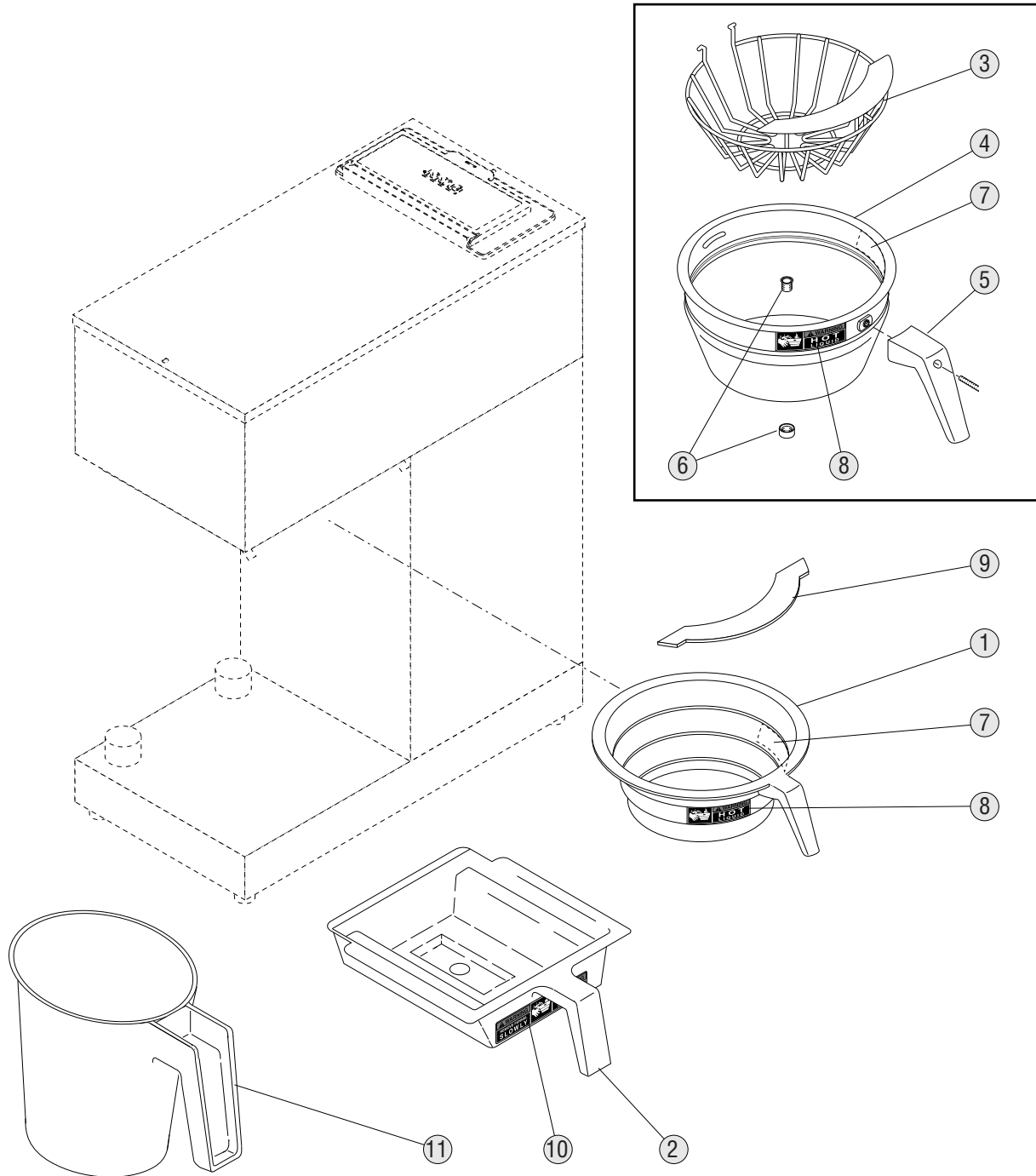
Note: The following items are not illustrated

| | | | |
|----|------------|---|---|
| 20 | 21016.0005 | 1 | Lead, Elec - Wht 12" Terminal Block to Heater |
| 21 | 21016.0303 | 1 | Lead, Elec - Blk 10" Terminal Block to Control Thermostat |
| 22 | 21016.0079 | 1 | Lead, Elec - Blu/Blk 23" Control Thermo to Limit Thermostat |
| 23 | 21016.0008 | 1 | Lead, Elec - Blk 4" Limit Thermo to Tank Heater |



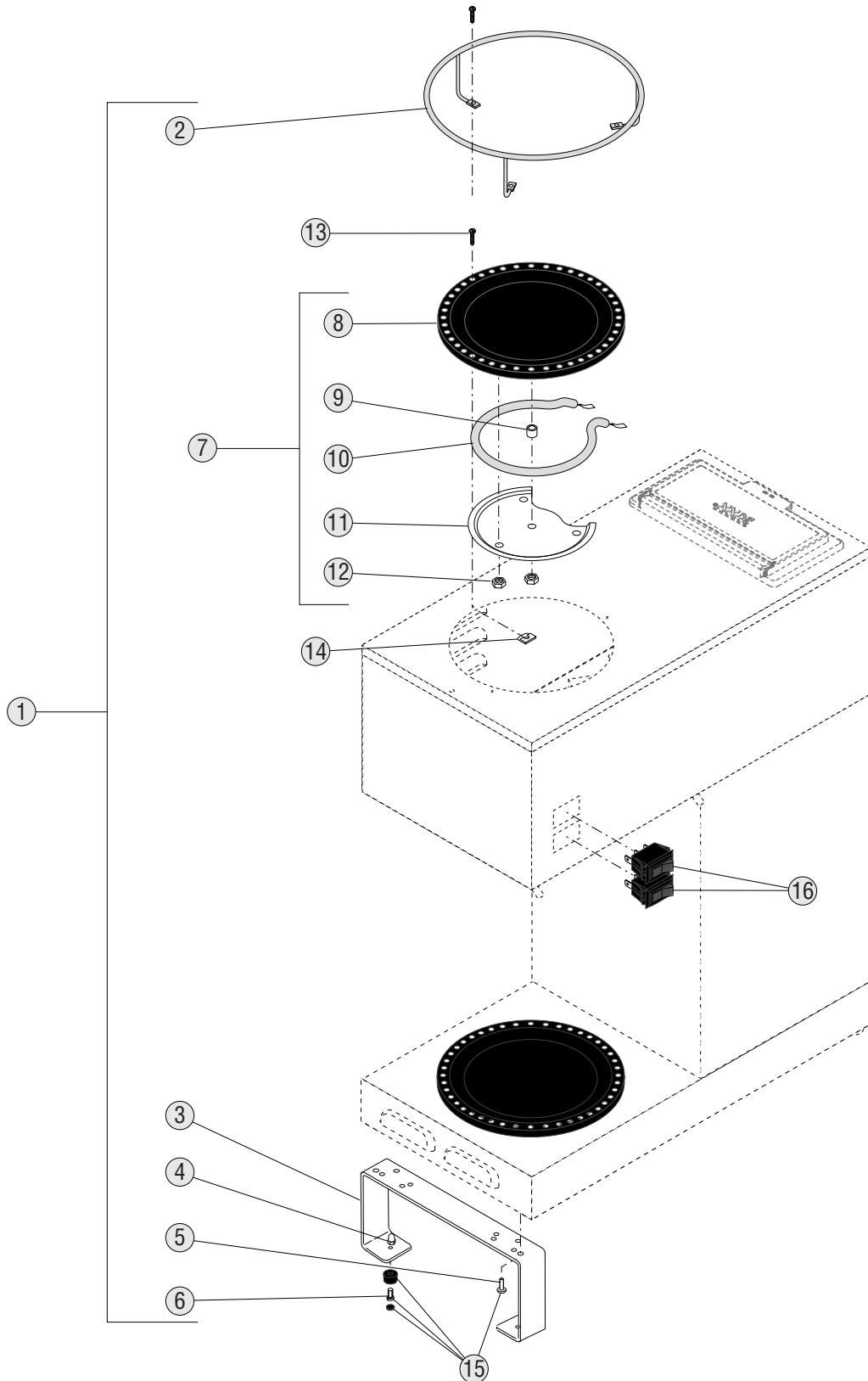
3 TAB TANK AND COMPONENTS

| ITEM | PART NO. | QTY. | DESCRIPTION |
|------|------------|------|---|
| 1 | 39598.0001 | 1 | Tank |
| 2 | 05555.0001 | 1 | Kit, Sprayhead Tube (Includes Grommet) |
| 3 | 37376.0004 | 1 | Grommet, Sprayhead Tube |
| 4 | 01075.0000 | 1 | Nut, Hex .438"-20 |
| 5 | 01082.0000 | 1 | Sprayhead, 6-Hole |
| 6 | 29329.1000 | 1 | Thermostat, Limit |
| 7 | 07073.1000 | 1 | Grommet, Thermostat |
| 8 | 20264.0000 | 1 | Blanket Warmer, 55W 120V |
| 9 | 39294.1002 | 1 | Tank Heater Kit 1320W 120V (Includes Gaskets) |
| | 00908.0000 | 3 | Nut, Hex 8-32 |
| 10 | 39590.0000 | 1 | Gasket, Tank Heater |



FUNNELS, PITCHER AND FILTER BASKET

| ITEM | PART NO. | QTY. | DESCRIPTION |
|------|------------|------|---|
| 1 | 20583.0003 | 1 | Funnel W/Decals, Plastic - Blk |
| | 20583.0006 | 1 | Funnel W/Decals, Plastic - Orn |
| | 20216.0000 | 1 | Funnel, SST W/Black Handle (7.125" Dia.) (Includes Items 3 thru 8) |
| | 20216.0001 | 1 | Funnel, SST W/Orange Handle (7.125" Dia.) (Includes items 3 thru 8) |
| 2 | 02774.0011 | 1 | Funnel W/Decals, Pouch Pack - Blk (Small) |
| | 04274.0012 | 1 | Funnel W/Decals, Pouch Pack - Blk (Large) |
| 3 | 33088.0000 | 1 | Filter Basket w/Splash Guard |
| 4 | 28553.0000 | 1 | Funnel, SST (Includes items 7 & 8) |
| 5 | 20244.1000 | 1 | Handle, Black |
| | 20244.1001 | 1 | Handle, Orange |
| | 01331.0002 | 1 | Screw, Round Head 10-32 x 1.50" |
| 6 | 01031.0000 | 1 | Funnel Tip Kit |
| 7 | 03408.0002 | 1 | Decal, Warning-Remove Funnel |
| 8 | 03409.0002 | 1 | Decal, Warning-Hot Liquid |
| 9 | 32964.0000 | 1 | Splash Guard |
| 10 | 28694.0000 | 1 | Decal, Warning-Hot Liquid/Remove Funnel |
| 11 | 04238.0000 | 1 | Pitcher, 64 oz - Plastic |



WARMERS AND GALLEY KIT

| ITEM | PART NO. | QTY. | DESCRIPTION |
|-------|------------|------|--|
| 1 | 24783.0000 | 1 | Galley Kit (Includes # 2 - 6) |
| 2 | 24730.0000 | 2 | Galley Rail, SST |
| | 01303.0000 | 3 | Screw, Pan Head (SST) 4-40 x .50" |
| 3 | 02776.0000 | 2 | Leg, Extension - 3.50HT |
| 4 | 02324.0000 | 4 | Nut, Acorn (SST) 8-32 |
| 5 | 02332.0002 | 4 | Screw, Hex-Crimptite 6-32 x .38" |
| 6 | 01390.0000 | 4 | Screw, Round Head - Phillip (SST) 8-32 x .62" |
| ----- | | | |
| 7 | 03652.0000 | 2 | Warmer Assembly, Blk 100W 120V (Includes # 8 - 12) |
| 8 | 03656.0000 | 2 | Warmer Dish, Blk |
| 9 | 13042.0001 | 2 | Spacer, .174" I.D. .188" |
| 10 | 01227.0000 | 2 | Warmer Element, 100W 120V |
| 11 | 05212.0000 | 2 | Plate, Warmer Retainer |
| 12 | 00970.0000 | 4 | Nut, Keps #8-32 |
| 13 | 01303.0000 | 6 | Screw, Pan Head #4-40 x .50" |
| 14 | 00916.0000 | 6 | Fastener, J-Type (SST) 4-40 |
| ----- | | | |
| 15 | 04198.0000 | - | Kit, Rubber Feet (Set of 4) <i>Optional</i> |
| | 03995.0000 | 4 | Rubber Foot |
| | 03992.0000 | 4 | Plug, Foot |
| | 01390.0000 | 4 | Screw, Round Head - Phillip (SST) 8-32 x .62" |
| | 02332.0002 | 4 | Screw, Hex-Crimptite 6-32 x .38" |
| 16 | 33213.0000 | 2 | Warmer Switch |

NUMERICAL INDEX

| PART NO. | PAGE NO. | PART NO. | PAGE NO. | PART NO. | PAGE NO. | PART NO. | PAGE NO. |
|-----------------|----------|-----------------|----------|-----------------|----------|----------|----------|
| 00603.0000..... | 7 | 05545.0000..... | 11 | 37985.1003..... | 7 | | |
| 00658.0000..... | 5 | 05555.0001..... | 13 | 38498.1000..... | 7 | | |
| 00720.0000..... | 7,11 | 05555.0002..... | 11 | 39002.0002..... | 5 | | |
| 00754.0001..... | 5 | 05697.0006..... | 11 | 39294.1002..... | 13 | | |
| 00824.0000..... | 5 | 06220.0000..... | 9 | 39590.0000..... | 13 | | |
| 00831.0000..... | 5 | 07073.1000..... | 11,13 | 39598.0001..... | 13 | | |
| 00833.0000..... | 7 | 11424.0000..... | 9 | 39777.0000..... | 5 | | |
| 00908.0000..... | 11,13 | 12364.0000..... | 5,7 | 39777.0002..... | 5 | | |
| 00916.0000..... | 7,17 | 12981.0001..... | 7 | 40157.0000..... | 5 | | |
| 00917.0000..... | 5 | 13042.0001..... | 17 | | | | |
| 00942.0000..... | 11 | 20216.0000..... | 15 | | | | |
| 00943.0000..... | 11 | 20216.0001..... | 15 | | | | |
| 00970.0000..... | 11,17 | 20244.1000..... | 15 | | | | |
| 01031.0000..... | 15 | 20244.1001..... | 15 | | | | |
| 01075.0000..... | 11,13 | 20264.0000..... | 11,13 | | | | |
| 01082.0000..... | 11,13 | 20583.0003..... | 15 | | | | |
| 01200.0000..... | 9 | 20583.0006..... | 15 | | | | |
| 01201.0000..... | 5,9 | 20762.0000..... | 11 | | | | |
| 01212.0000..... | 9 | 21016.0005..... | 11 | | | | |
| 01227.0000..... | 17 | 21016.0008..... | 11 | | | | |
| 01303.0000..... | 7,17 | 21016.0079..... | 11 | | | | |
| 01311.0000..... | 7,11 | 21016.0303..... | 11 | | | | |
| 01315.0000..... | 7,11 | 24730.0000..... | 17 | | | | |
| 01331.0002..... | 15 | 24783.0000..... | 17 | | | | |
| 01390.0000..... | 11,17 | 28319.0000..... | 11 | | | | |
| 01592.0000..... | 5 | 28553.0000..... | 15 | | | | |
| 01637.0000..... | 5 | 28694.0000..... | 15 | | | | |
| 01663.0000..... | 5 | 29329.1000..... | 11,13 | | | | |
| 01686.0000..... | 5 | 29894.0000..... | 7 | | | | |
| 02322.0002..... | 5 | 32964.0000..... | 15 | | | | |
| 02324.0000..... | 17 | 33088.0000..... | 15 | | | | |
| 02332.0002..... | 5,17 | 33094.1000..... | 7 | | | | |
| 02337.0001..... | 5 | 33094.1001..... | 7 | | | | |
| 02542.0000..... | 7 | 33210.0000..... | 5 | | | | |
| 02774.0011..... | 15 | 33211.1003..... | 5 | | | | |
| 02776.0000..... | 17 | 33211.1005..... | 5 | | | | |
| 03408.0002..... | 15 | 33212.1003..... | 5 | | | | |
| 03409.0002..... | 15 | 33212.1005..... | 5 | | | | |
| 03652.0000..... | 17 | 33213.0000..... | 17 | | | | |
| 03656.0000..... | 17 | 33214.0000..... | 7 | | | | |
| 03992.0000..... | 17 | 33214.0003..... | 7 | | | | |
| 03995.0000..... | 17 | 33766.0000..... | 5 | | | | |
| 04118.0000..... | 11 | 33767.0000..... | 5 | | | | |
| 04119.0001..... | 11 | 33768.0000..... | 5 | | | | |
| 04198.0000..... | 17 | 33769.0000..... | 7 | | | | |
| 04198.0001..... | 5 | 33797.0000..... | 7 | | | | |
| 04221.0000..... | 11 | 33964.0000..... | 7 | | | | |
| 04236.1000..... | 11 | 33964.0001..... | 7 | | | | |
| 04238.0000..... | 15 | 33964.0002..... | 7 | | | | |
| 04274.0012..... | 15 | 33964.0003..... | 7 | | | | |
| 04307.0000..... | 11 | 36154.0000..... | 5,7 | | | | |
| 04309.0000..... | 11 | 37007.0000..... | 7 | | | | |
| 05212.0000..... | 17 | 37007.0001..... | 7 | | | | |
| 05515.0000..... | 11 | 37376.0004..... | 13 | | | | |
| 05518.0000..... | 11 | 37881.0000..... | 5,7 | | | | |