

BUNN®

JDF-4 UC

S/N JDF0005473 & UP



ILLUSTRATED PARTS CATALOG

Designs, materials, weights, specifications, and dimensions for equipment or replacement parts are subject to change without notice.

BUNN-O-MATIC CORPORATION

POST OFFICE BOX 3227

SPRINGFIELD, ILLINOIS 62708-3227

PHONE: (217) 529-6601 FAX: (217) 529-6644

BUNN-O-MATIC COMMERCIAL PRODUCT WARRANTY

Bunn-O-Matic Corp. ("BUNN") warrants equipment manufactured by it as follows:

- 1) All equipment other than as specified below: 2 years parts and 1 year labor.
- 2) Electronic circuit and/or control boards: parts and labor for 3 years.
- 3) Compressors on refrigeration equipment: 5 years parts and 1 year labor.
- 4) Grinding burrs on coffee grinding equipment to grind coffee to meet original factory screen sieve analysis: parts and labor for 3 years or 30,000 pounds of coffee, whichever comes first.

These warranty periods run from the date of installation BUNN warrants that the equipment manufactured by it will be commercially free of defects in material and workmanship existing at the time of manufacture and appearing within the applicable warranty period. This warranty does not apply to any equipment, component or part that was not manufactured by BUNN or that, in BUNN's judgment, has been affected by misuse, neglect, alteration, improper installation or operation, improper maintenance or repair, damage or casualty. This warranty is conditioned on the Buyer 1) giving BUNN prompt notice of any claim to be made under this warranty by telephone at (217) 529-6601 or by writing to Post Office Box 3227, Springfield, Illinois 62708-3227; 2) if requested by BUNN, shipping the defective equipment prepaid to an authorized BUNN service location; and 3) receiving prior authorization from BUNN that the defective equipment is under warranty.

THE FOREGOING WARRANTY IS EXCLUSIVE AND IS IN LIEU OF ANY OTHER WARRANTY, WRITTEN OR ORAL, EXPRESS OR IMPLIED, INCLUDING, BUT NOT LIMITED TO, ANY IMPLIED WARRANTY OF EITHER MERCHANTABILITY OR FITNESS FOR A PARTICULAR PURPOSE. The agents, dealers or employees of BUNN are not authorized to make modifications to this warranty or to make additional warranties that are binding on BUNN. Accordingly, statements by such individuals, whether oral or written, do not constitute warranties and should not be relied upon.

If BUNN determines in its sole discretion that the equipment does not conform to the warranty, BUNN, at its exclusive option while the equipment is under warranty, shall either 1) provide at no charge replacement parts and/or labor (during the applicable parts and labor warranty periods specified above) to repair the defective components, provided that this repair is done by a BUNN Authorized Service Representative; or 2) shall replace the equipment or refund the purchase price for the equipment.

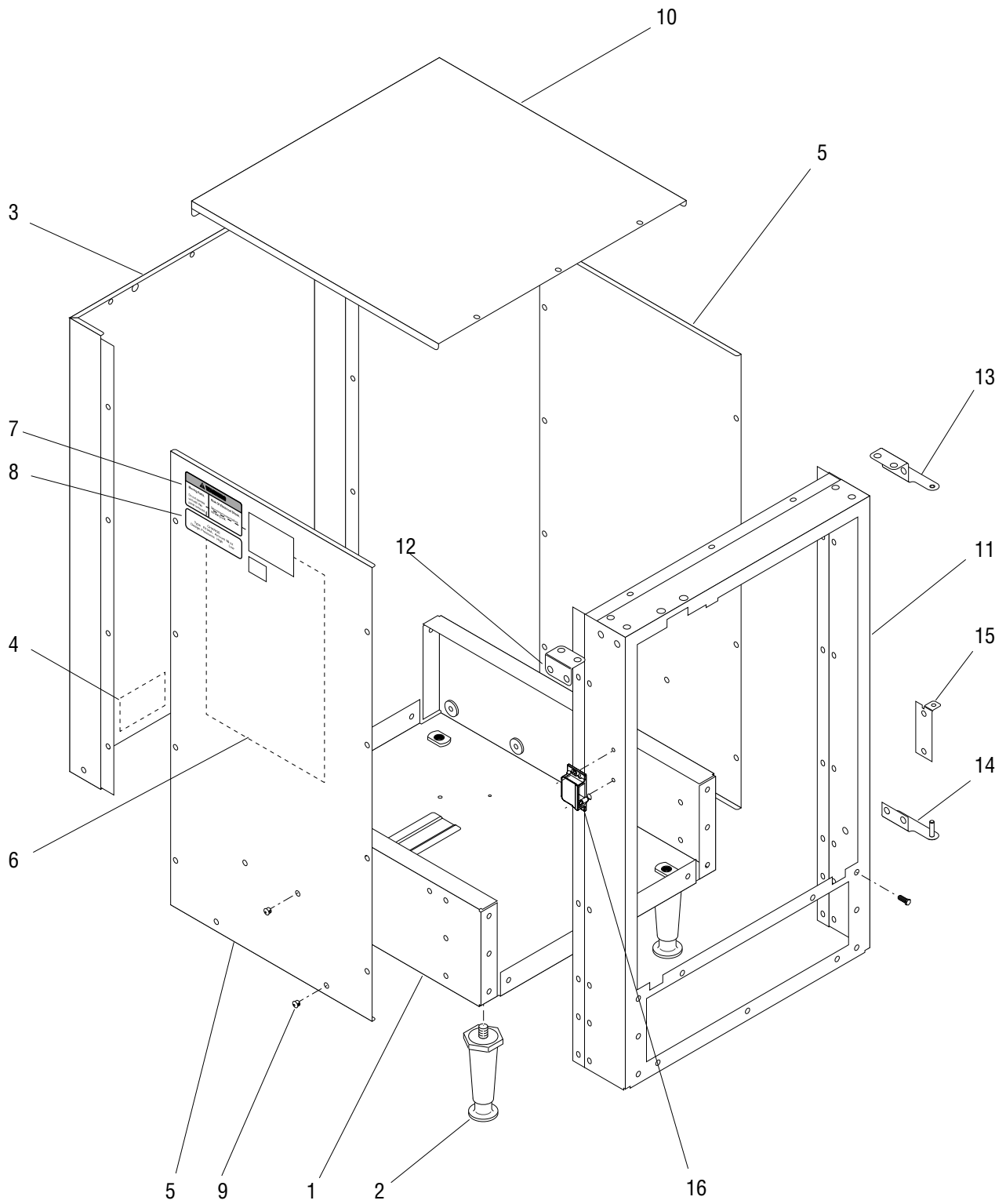
THE BUYER'S REMEDY AGAINST BUNN FOR THE BREACH OF ANY OBLIGATION ARISING OUT OF THE SALE OF THIS EQUIPMENT, WHETHER DERIVED FROM WARRANTY OR OTHERWISE, SHALL BE LIMITED, AT BUNN'S SOLE OPTION AS SPECIFIED HEREIN, TO REPAIR, REPLACEMENT OR REFUND.

In no event shall BUNN be liable for any other damage or loss, including, but not limited to, lost profits, lost sales, loss of use of equipment, claims of Buyer's customers, cost of capital, cost of down time, cost of substitute equipment, facilities or services, or any other special, incidental or consequential damages.

BUNN, and JDF-4 UC are either trademarks or registered trademarks of Bunn-O-Matic Corporation.

TABLE OF CONTENTS

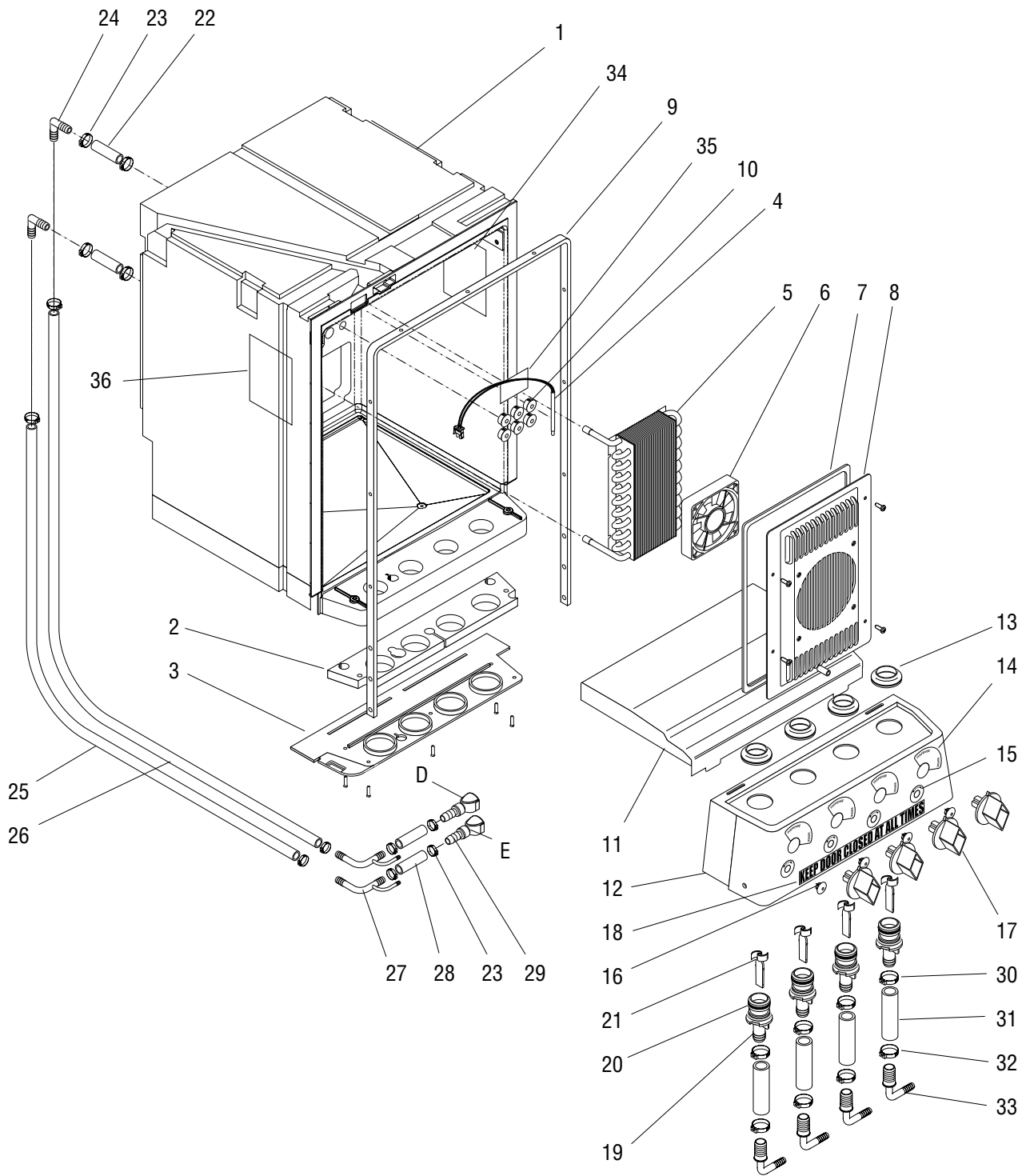
Cabinet Frame & Covers	4
Cabinet & Components	6
Drip Tray & covers.....	10
Refrigeration Chassis & Panels	12
Compressor & Lines	14
Fan Assembly	16
Water Tank Assy	18
Water Valve & Lines	22
Dispense Platform Assy	26
Dispense Valve Assy.....	30
Plain Water Manifold	32
Pump Assy	34
Rinse Water Manifold	36
Bottle Adapter Assy	38
Door Assy.....	40
Electrical Components.....	42
Refillable Container Assy.....	46
Numerical Index	48



CABINET FRAME & COVERS

ITEM	PART NO.	QTY.	DESCRIPTION
1	36807.0000*	1	Base Frame
2	26528.0000	4	Leg
	03996.0000	4	Pad, Non-skid
3	36826.0001*	1	Rear Cover
	35420.0000	2	Screw, Hex Head #10-32 x .38"
4	00986.0002	1	Decal, Warning Electrical
5	37504.0003*	2	Side Panel
	35420.0000	20	Screw, Hex Head #10-32 x .38"
6	37568.0000	1	Schematic, Electrical 120V
	37568.0001	1	Schematic, Electrical 230V
7	27442.0000	1	Decal, Moving Parts Warning
8	33461.0001	1	Decal, Refrigerant Charge
9	00764.0000	2	Plug, Black
10	36822.0001*	1	Top Cover
	35420.0000	6	Screw, Hex Head #10-32 x .38"
11	37255.0001*	1	Front Housing
	35420.0000	6	Screw, Hex Head #10-32 x .38"
12	36821.0001*	1	Bracket
	37549.0000	6	Screw, Hex Head .25-20 x .50"
13	36820.0001*	1	Bracket
	37549.0000	4	Screw, Hex Head .25-20 x .50"
14	36818.0001*	1	Bracket
	37549.0000	4	Screw, Hex Head .25-20 x .50"
15	36866.0001*	1	Bracket, Locator
	37549.0000	2	Screw, Hex Head .25-20 x .50"
16	34666.0001	1	Catch, Door Latch
	37550.0000	2	Screw, Hex Head #4-40 x .50"

* Indicates the part number listed is for reference only. See DESCRIPTION for possible service replacement.



NOTE: Letters appearing within this illustration correspond to matching connections in other illustrations.

P3545.40

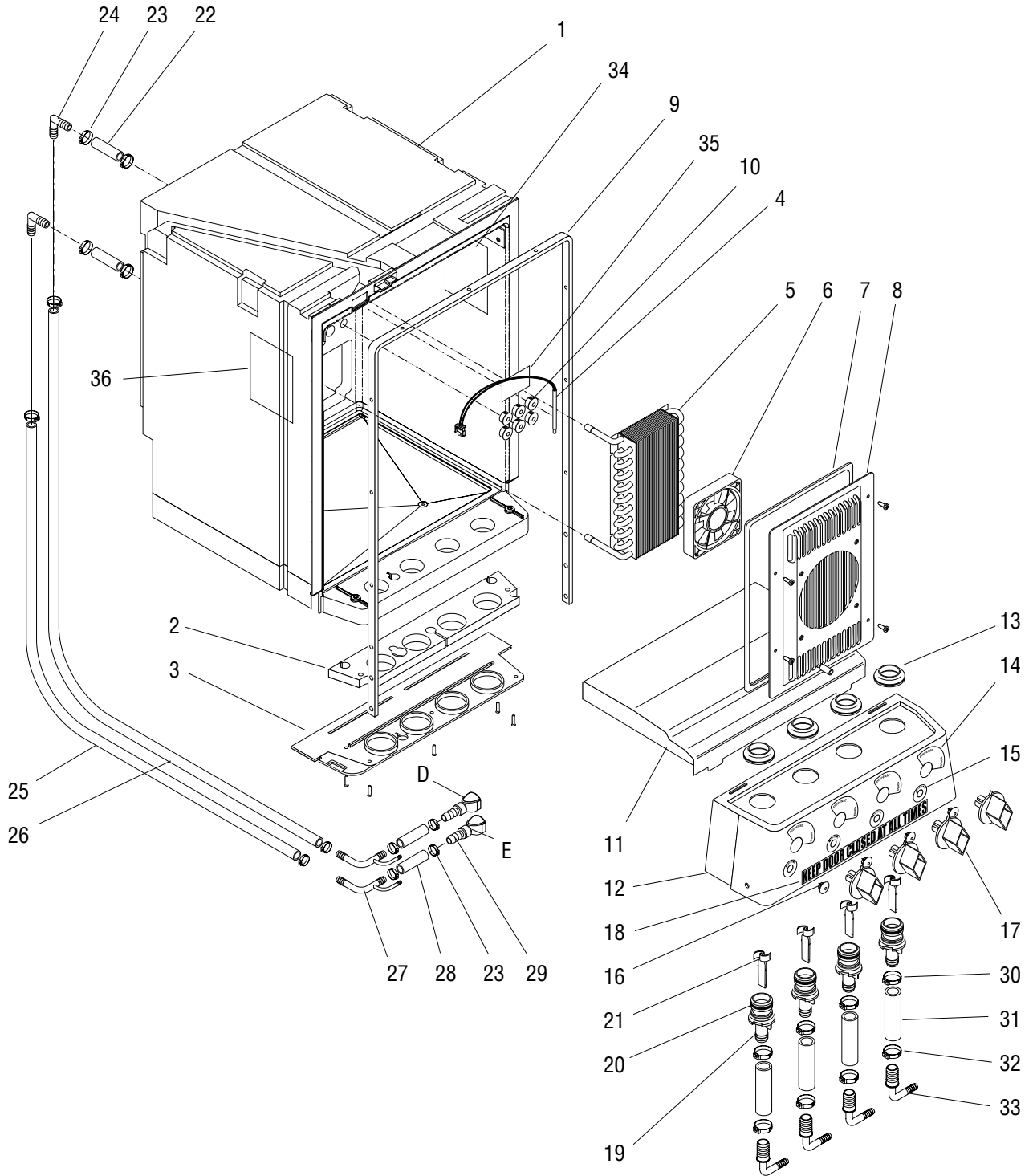
CABINET COMPONENTS

ITEM	PART NO.	QTY.	DESCRIPTION
1	33804.0009*	1	Cabinet Assy 120V (Includes items 1-8)
	33804.0010*	1	Cabinet Assy 230V (Includes items 1-8)
	24544.0000	8	Screw #8-18
2	32307.0000	1	Foam
3	33786.0001	1	Plate
	02340.0001	5	Screw, Hex Head #8-32 x 38"
4	27246.0000	1	Temperature Sensor
5	32763.0000	1	Water Coil
	01382.0000	4	Screw #6-32 x .38"
6	33297.0000	1	Fan Assy
	24544.0000	4	Screw #8-18
7	33511.0000	1	Gasket
8	32448.1000	1	Cover (Includes item 7)
	24544.0000	4	Screw #8-18
9	36810.0000*	1	Wrap
10	00669.0000	6	Plug
11	33794.0000	1	Product Shelf
12	33857.0000	1	Panel, Front Dispense
	01345.0000	2	Screw #6-32 x .50"
13	32461.0000	4	Gasket, Drip
14	33459.0001	4	Decal, Dispense/Rinse
15	33459.0002	4	Decal, Flow Adj.
16	27394.0000	4	Plug
17	32455.0000	4	Knob
18	37891.0000	1	Decal, Keep Door Closed
19	32467.1000	4	Nozzle Assy (Includes items 20 & 21)
20	32848.0000	4	O-ring
21	32621.0000	4	Mixer, Spiral
22	34325.0023*	2	Tube, Silicone .38" ID x 2.0" (Order item 39)
23	21275.0003	6	Clamp .57" - .70"
24	33623.0000	2	Elbow .38" Barb
25	34325.0024*	2	Tube, Silicone .38" ID x 27.0" (Order item 39)
26	34325.0005*	2	Tube, Silicone .38" ID x 36.0" (Order item 39)
27	36906.0001	2	Elbow

(Continued)

* Indicates the part number listed is for reference only. See DESCRIPTION for possible service replacement.

(Continued)



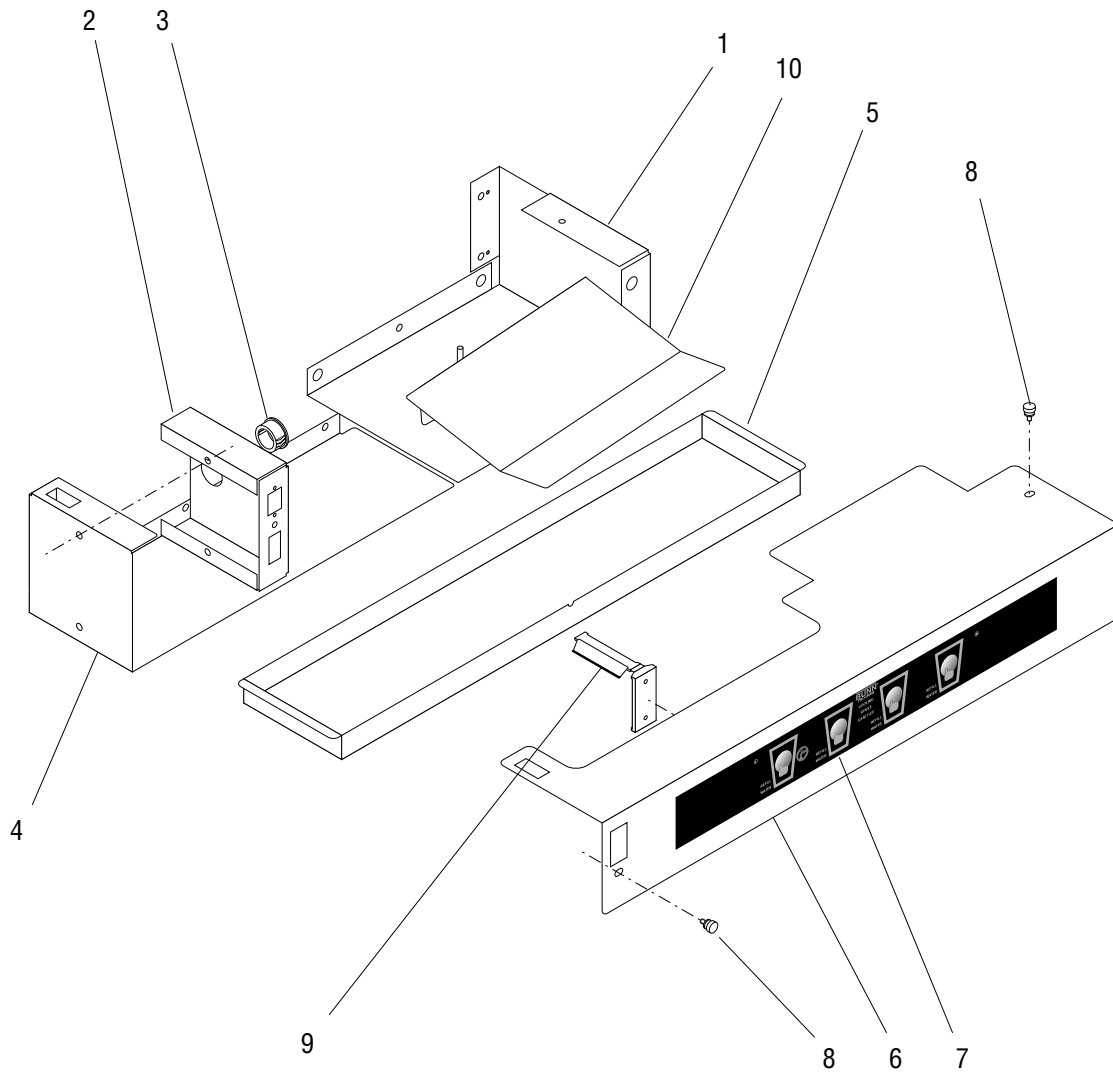
NOTE: Letters appearing within this illustration correspond to matching connections in other illustrations.

P3545.40

CABINET COMPONENTS

ITEM	PART NO.	QTY.	DESCRIPTION
28	34325.0003*	2	Tube, Silicone .38" ID x 3.00" (Order item 39)
29	37021.0000	2	Fitting, Quick Connect, Female .38" Barb
30	12422.0012	4	Clamp
31	37012.0001	4	Tube
32	12422.0009	4	Clamp
33	36893.0000	4	Elbow
34	35424.0000	1	Decal, Function List
35	34540.0000	1	Decal, Caution Close
36	33571.0000	1	Decal, Fault Codes
37	M2568.1000	-	Grease, USDA H-1 (Use when assembling items 19, 20 & 21)
38	M2337.1000	-	Insulation, Tube 72.0" (Use as required)
39	34325.1002	-	Hose .38" ID x 120.0" lg (Use as required)

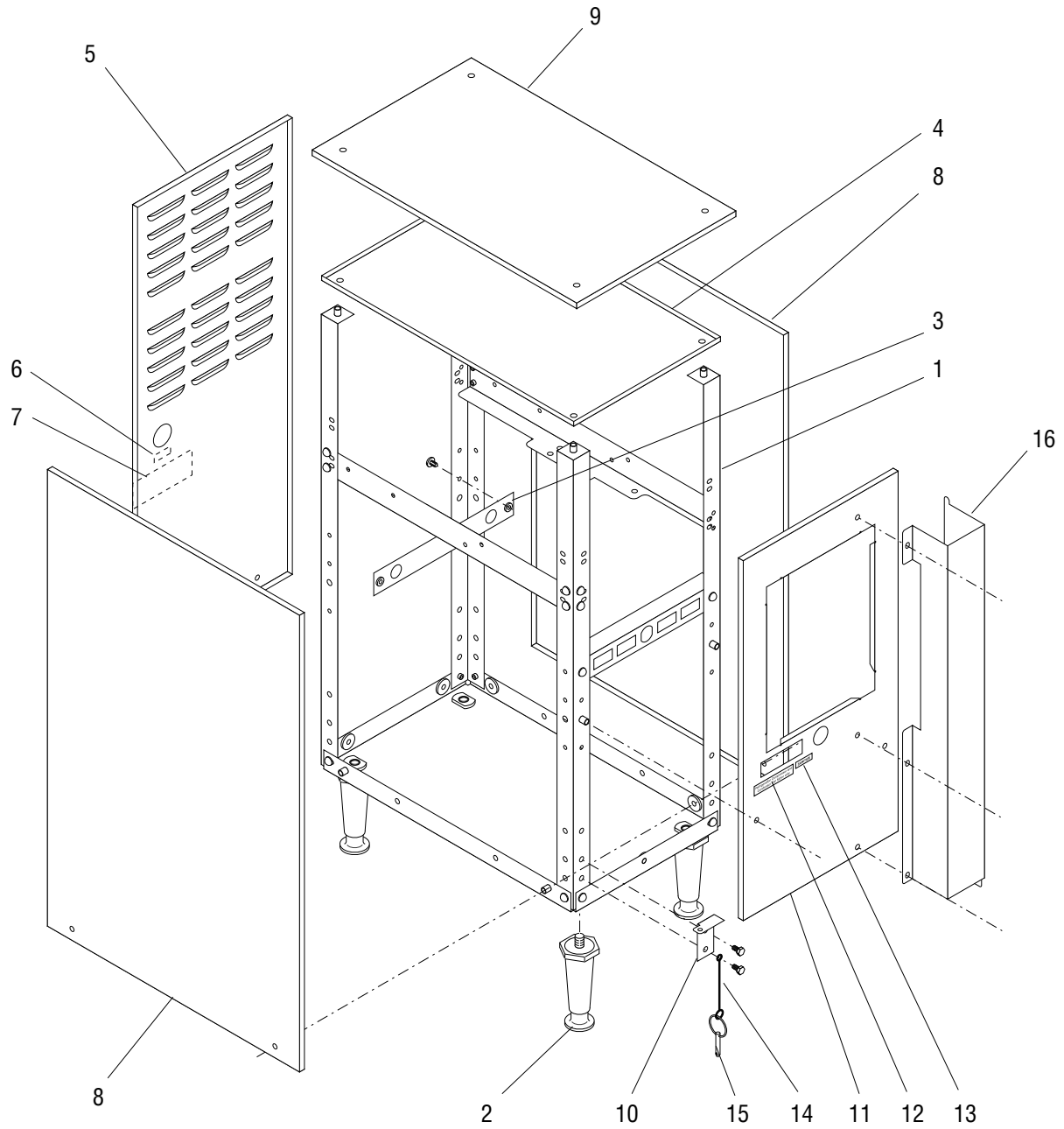
* Indicates the part number listed is for reference only. See DESCRIPTION for possible service replacement.



DRIP TRAY & COVERS

ITEM	PART NO.	QTY.	DESCRIPTION
1	36570.0000*	1	Bracket
	35420.0000	3	Screw, Hex Head #10-32 x .38"
2	36868.0001*	1	Bracket, Switch Retainer
	35420.0000	2	Screw, Hex Head #10-32 x .38"
3	01592.0000	1	Bushing, Snap
4	36565.0001*	1	Bracket
	35420.0000	4	Screw, Hex Head #10-32 x .38"
5	36566.0001	1	Drip Tray
6	36567.0001*	1	Cover
7	33785.1000	1	Membrane Switch
8	22349.0001	2	Thumb Screw
9	29976.0000	2	Cable Mount
10	37175.0000	1	Shield, Drip

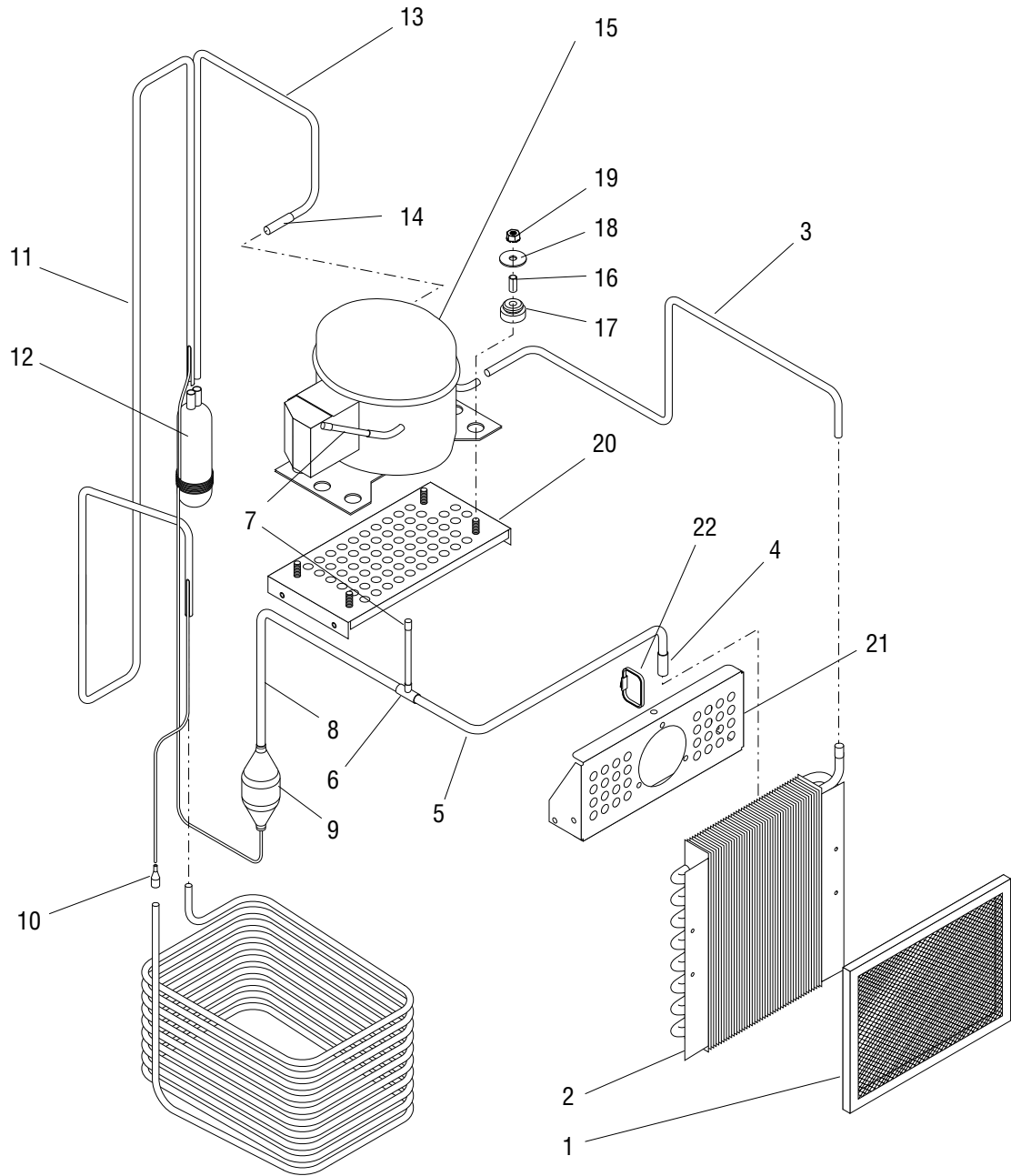
* Indicates the part number listed is for reference only. See DESCRIPTION for possible service replacement.



REFRIGERATION CHASSIS & PANELS

ITEM	PART NO.	QTY.	DESCRIPTION
1	37481.0000*	1	Chassis
2	26528.0000	4	Leg
	03996.0000	4	Pad, Non-skid
3	36838.0000*	1	Plate, Bulkhead
	01326.0002	2	Screw, Truss Head, Locking #10-32 x .312"
4	36612.0000*	1	Positioner
5	36613.0001*	1	Panel, Rear
	35420.0000	2	Screw, Hex Head #10-32 x .38"
6	33645.0000	1	Decal, Main Water Connection
7	00656.0000	1	Decal, Comply to Plumbing Code
8	36614.0001*	2	Panel, Side (Left & Right)
	35420.0000	4	Screw, Hex Head #10-32 x .38"
9	36611.0001*	1	Cover, Top
	35420.0000	4	Screw, Hex Head #10-32 x .38"
10	36837.0001*	1	Plate, Locator
	35420.0000	2	Screw, Hex Head #10-32 x .38"
11	36843.0001*	1	Panel, Front
	35420.0000	2	Screw, Hex Head #10-32 x .38"
12	33458.0000	1	Decal, Refrigeration ON/OFF
13	33460.0000	1	Decal, Sanitize Switch
14	26376.0000*	1	Tether
	35420.0000	1	Screw, Hex Head #10-32 x .38"
15	32885.0000	1	Pin
16	36835.0001*	1	Guard, Hose
	35420.0000	3	Screw, Hex Head #10-32 x .38"

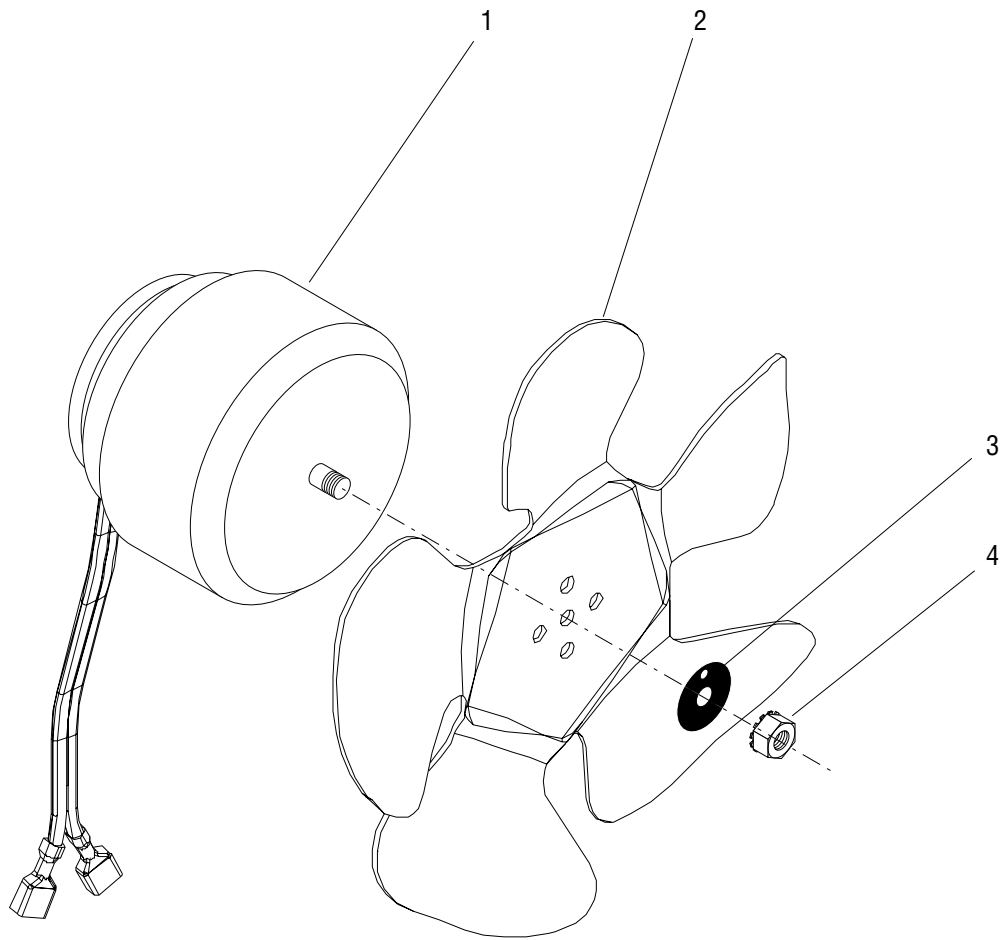
* Indicates the part number listed is for reference only. See DESCRIPTION for possible service replacement.



COMPRESSOR & LINES

ITEM	PART NO.	QTY.	DESCRIPTION
1	35164.0000	1	Air Filter
2	29951.0001	1	Condenser
	02335.0001	4	Screw, Hex Crimptite #8 x .38"
3	36907.0001	1	Tube (Requires brazing to install)
4	37243.0000*	1	Tube (Requires brazing to install)
5	37242.0001*	1	Tube (Requires brazing to install)
6	00396.0002	1	Tee (Requires brazing to install)
7	35581.0001	2	Tube (Requires brazing to install)
8	37241.0001*	1	Tube (Requires brazing to install)
9	35175.1001*	1	Filter Dryer (Requires brazing to install)(Includes item 11)
10	35178.0000	1	Tube Adapter (Requires brazing to install)
11	34015.0001*	1	Tube (Requires brazing to install)
12	32776.0001	1	Accumulator (Requires brazing to install)
13	36908.0001	1	Tube (Requires brazing to install)
14	35386.0001	1	Tube (Requires brazing to install)
15	33522.0000*	1	Compressor Assy 120V
	33522.0001*	1	Compressor Assy 230V
16	28512.0000*	4	Sleeve (Order item 23)
17	28511.0000*	4	Grommet (Order item 23)
18	21431.0003	4	Washer
19	00901.0000	4	Nut
20	33536.0000	1	Platform, Compressor
	01317.0003	4	Screw, Truss Head, Locking #8-32 x .38"
21	36794.0000*	1	Bracket, Fan Mounting
	01317.0003	4	Screw, Truss Head, Locking #8-32 x .38"
22	37537.0000	1	Tie, Metal Locking 5.0"
23	28567.0000	1	Mounting Kit (Includes four each of items 16 & 17)
24	M2337.1000	-	Insulation, Tube .50" ID x 72.0" (Use as required)
25	M2336.1000	-	Insulation, Tube .38" ID x 72.0" (Use as required)

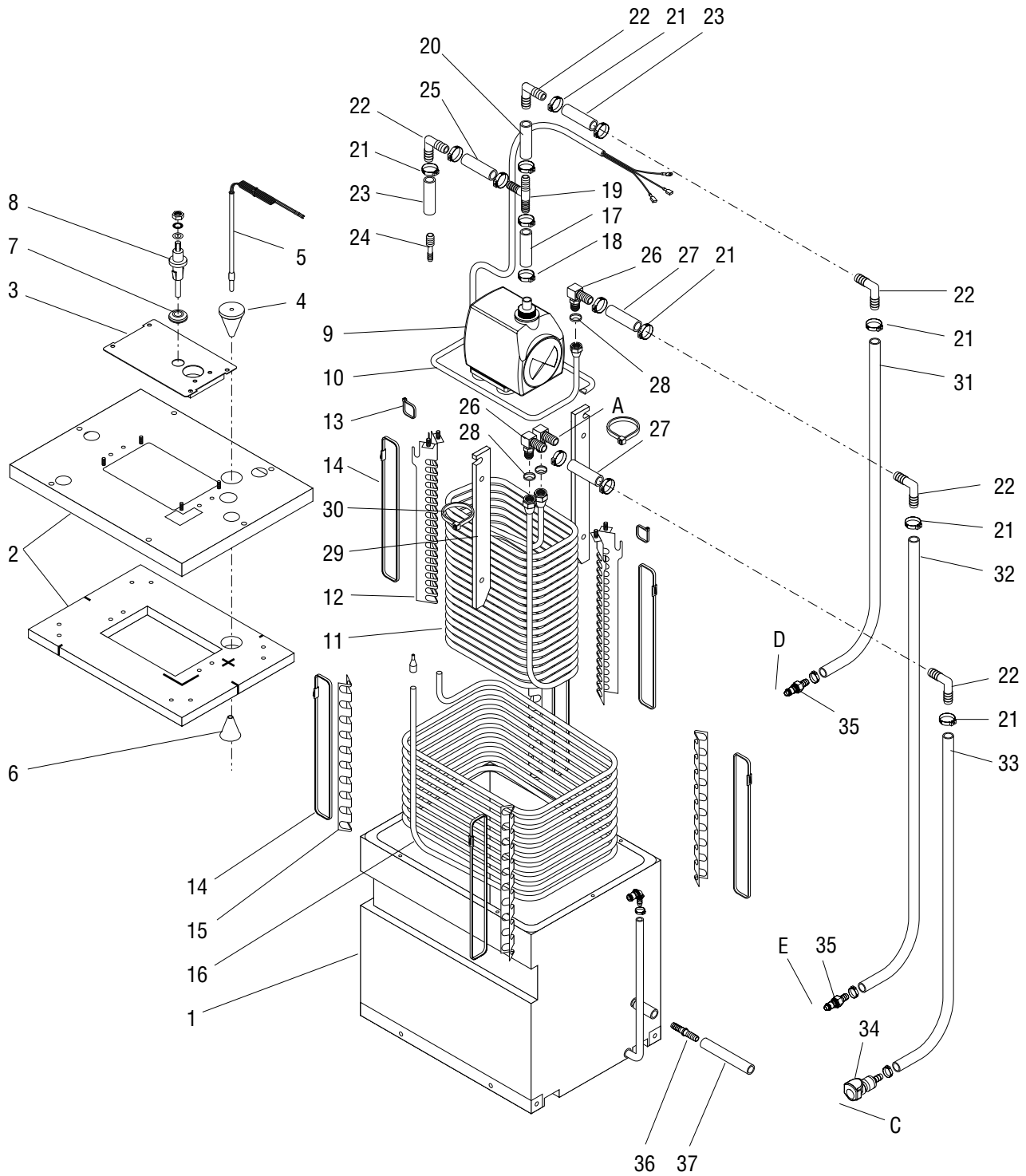
* Indicates the part number listed is for reference only. See DESCRIPTION for possible service replacement.



FAN ASSEMBLY

ITEM	PART NO.	QTY.	DESCRIPTION
1	33603.0000	1	Motor Assy 120V
	33603.0001	1	Motor Assy 230V
	27243.0000	3	Screw #8-36 x .437"
2	33602.0000	1	Blade, Fan
3	27258.0000	1	Silencer
4	23700.0000	1	Nut, Keps .25-20

* Indicates the part number listed is for reference only. See DESCRIPTION for possible service replacement.



NOTE: Letters appearing within this illustration correspond to matching connections in other illustrations.

P3547.45

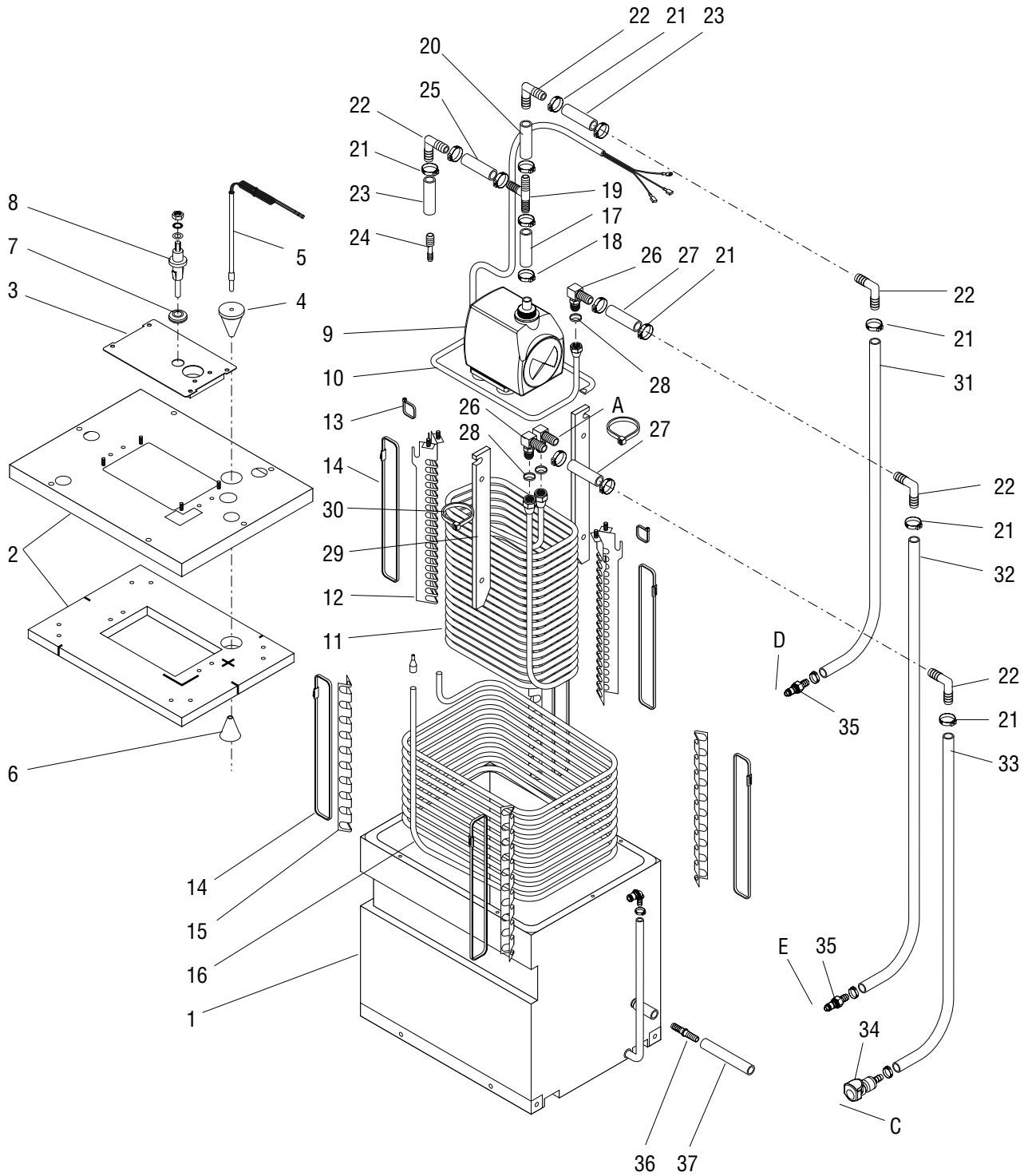
WATER TANK ASSEMBLY

ITEM	PART NO.	QTY.	DESCRIPTION
1	35165.0000	1	Tank Assy
	01317.0003	4	Screw, Truss Head, Locking #8-32 x .38"
2	35272.1001	1	Lid Assy (Includes items 4, 5, 6 & 8)
	24544.0000	6	Screw, Pan Head #8-18
3	34403.1002	1	Panel Assy (Includes item 7)
	00973.0000	4	Nut, Keps #6-32
4	33801.0000	1	Grommet
5	29327.0000	1	Probe, Temperature & Dry Plug
	00617.0000	1	Cable Tie, 3.9"
6	33801.0002	1	Grommet
7	02536.0000	1	Grommet
8	02645.1000	1	Probe, Liquid Level
	01522.0000	1	Washer
	20203.0100	1	Lockwasher, Internal-tooth #8
	00908.0000	1	Nut #8-32
9	37809.1000	1	Pump Assy 120V
	37265.0000	1	Pump Assy 230V
10	35106.0000	1	Manifold, Return Water
11	35132.0000*	1	Product Coil
12	34416.0000	2	Spacer
	00973.0000	4	Nut, Keps #6-32
13	00617.0000	2	Cable Tie, 3.9"
14	32734.0001	6	Cable Tie, 28.0"
15	33533.0000*	4	Spacer
16	33519.0000*	1	Evaporator Coil
17	20976.0062*	1	Tube, Silicone .38" ID x 1.75" (Order item 40)
18	21275.0009	2	Clamp .65" - .78"
19	32750.0001	1	Tee
20	34325.0003*	1	Tube, Silicone .38" ID x 3.0" (Order item 39)
21	21275.0003	14	Clamp .57" - .70"
22	33623.0000	5	Elbow .38" Barb
23	34325.0002*	2	Tube, Silicone .38" ID x 6.0" (Order item 39)
24	33068.0000	1	Fitting .375" Barb x .25" Barb

(Continued)

* Indicates the part number listed is for reference only. See DESCRIPTION for possible service replacement.

(Continued)



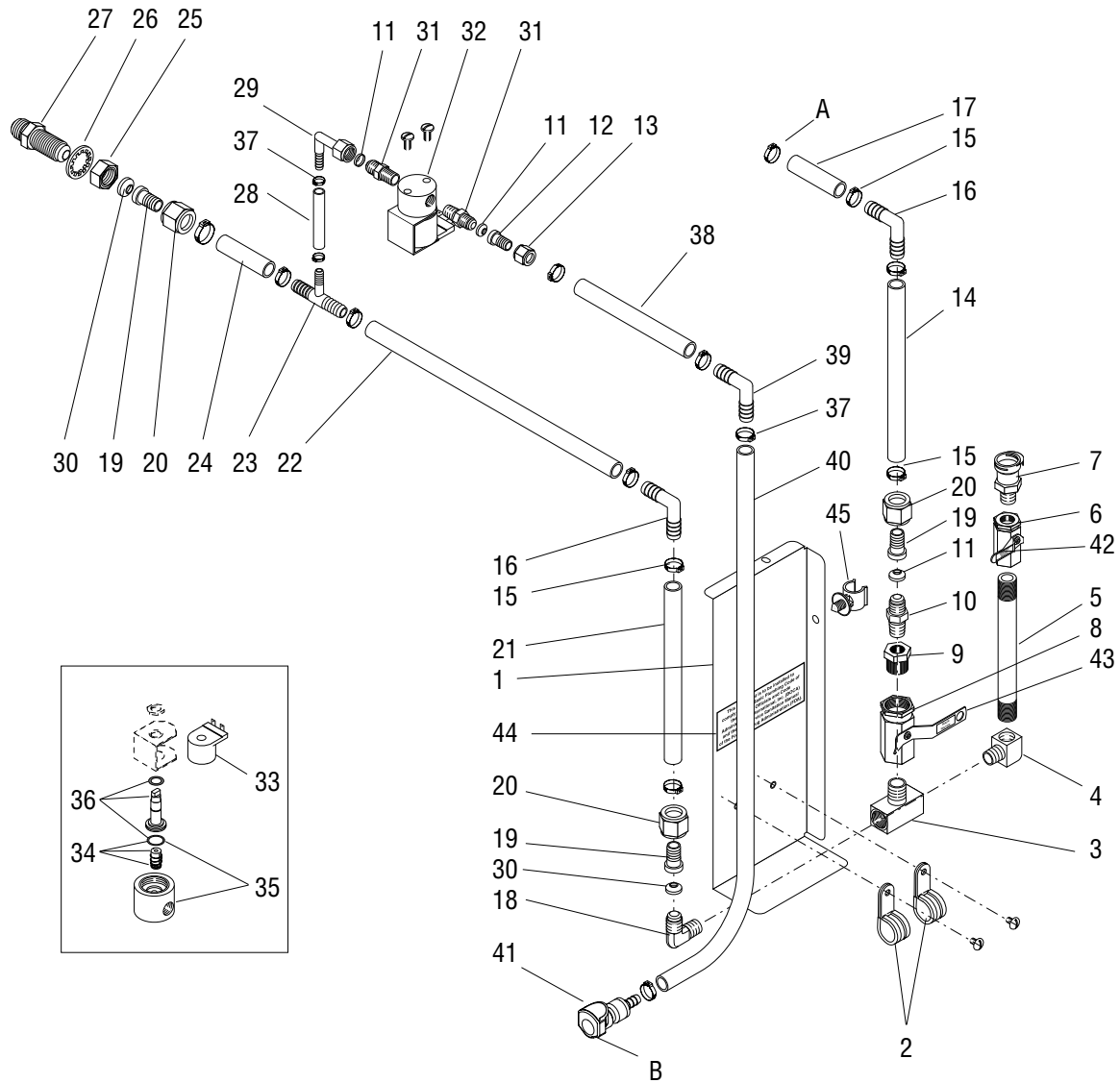
P3547.45

NOTE: Letters appearing within this illustration correspond to matching connections in other illustrations.

WATER TANK ASSEMBLY

ITEM	PART NO.	QTY.	DESCRIPTION
25	34325.0006*	4	Tube, Silicone .38" ID x 2.25" (Order item 39)
26	36894.0000	3	Elbow .375" Barb x .313 MFI
27	34325.0025*	2	Tube, Silicone .38" ID x 4.50" (Order item 39)
28	35305.0000	3	Gasket
29	36448.0000	2	Spacer
30	03290.0000	5	Tie, Cable
31	34325.0012*	1	Tube, Silicone .38" ID x 10.50" (Order item 39)
32	34325.0010*	1	Tube, Silicone .38" ID x 17.0" (Order item 39)
33	34325.0014*	1	Tube, Silicone .38" ID x 15.0" (Order item 39)
34	37021.0000	1	Fitting, Quick Connect Female
35	37014.0000	2	Fitting, Quick Connect Male
36	37552.0000	1	Fitting, Union .25" Barb x .25" Barb
37	33670.0008*	1	Tube, Clear Vinyl .25" ID x 4.0" lg
38	M2337.1000	-	Insulation, Tube .50" ID x 72.0" (Use as required)
39	34325.1002	-	Tube, Silicone .38" ID x 120.0" lg (Use as required)
40	20976.1000	-	Tube, Silicone .38" ID x 12.0" lg (Use as required)

* Indicates the part number listed is for reference only. See DESCRIPTION for possible service replacement.



NOTE: Letters appearing within this illustration correspond to matching connections in other illustrations.

P3132.60

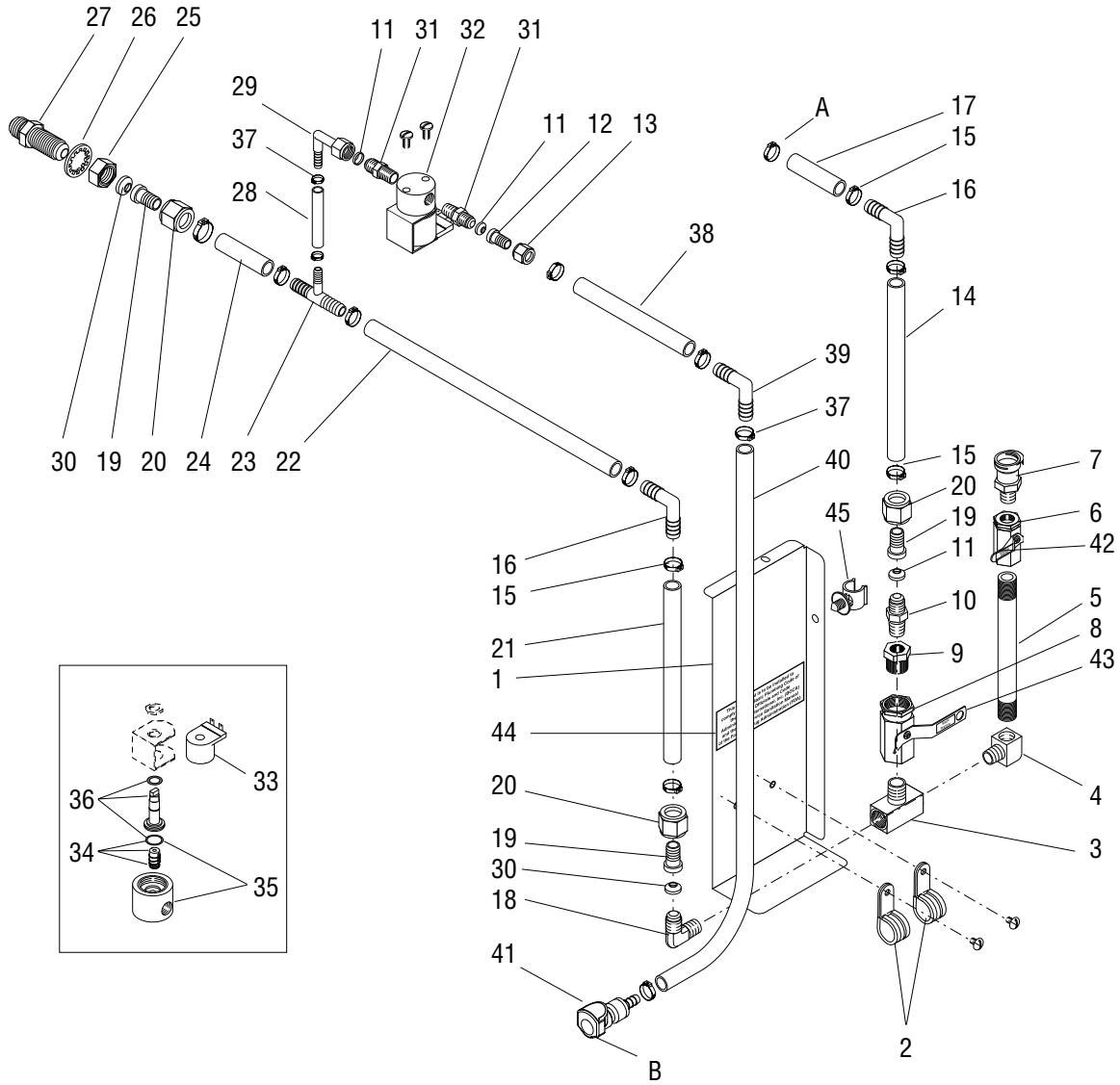
WATER VALVE & LINES

ITEM	PART NO.	QTY.	DESCRIPTION
1	36793.0000	1	Bracket
2	32360.0002	2	Clamp
	01311.0000	2	Screw, Truss Head #8-32 x .25"
3	21195.0001	1	Tee .25MPT
4	00442.0001	1	Elbow
5	36905.0000	1	Pipe
6	33113.0000	1	Valve, Ball
7	36921.0000	1	Fitting, Quick Connect
8	33114.0000	1	Valve, Ball
9	00441.0000	1	Bushng
10	00510.0004	1	Connector
11	33149.0001	3	Gasket
12	35326.0000	1	Nipple
13	35327.0000	1	Nut
14	34325.0002*	1	Hose .38" ID x 6.0" lg (Order item 47)
15	21275.0003	10	Clamp .57" - .70"
16	33623.0000	2	Elbow .38" Barb
17	34325.0006*	1	Hose .38" ID x 2.25" lg (Order item 47)
18	22029.0001	1	Elbow
19	33686.0000	3	Nipple
20	33150.0000	3	Nut
21	34325.0008*	1	Hose .38" ID x 7.50" lg (Order item 47)
22	34325.0007*	1	Hose .38" ID x 9.25" lg (Order item 47)
23	32749.0001	1	Tee
24	34325.0004*	1	Hose .38" ID x 1.50" lg (Order item 47)
25	12757.0000	1	Nut
26	01514.0000	1	Lockwasher, Internal-tooth
27	12756.0000	1	Fitting, Bulkhead
28	38129.0010*	1	Hose .25" ID x 2.75" lg (Order item 48)
29	33151.0005	1	Elbow
30	33149.0000	2	Gasket

(Continued)

* Indicates the part number listed is for reference only. See DESCRIPTION for possible service replacement.

(Continued)



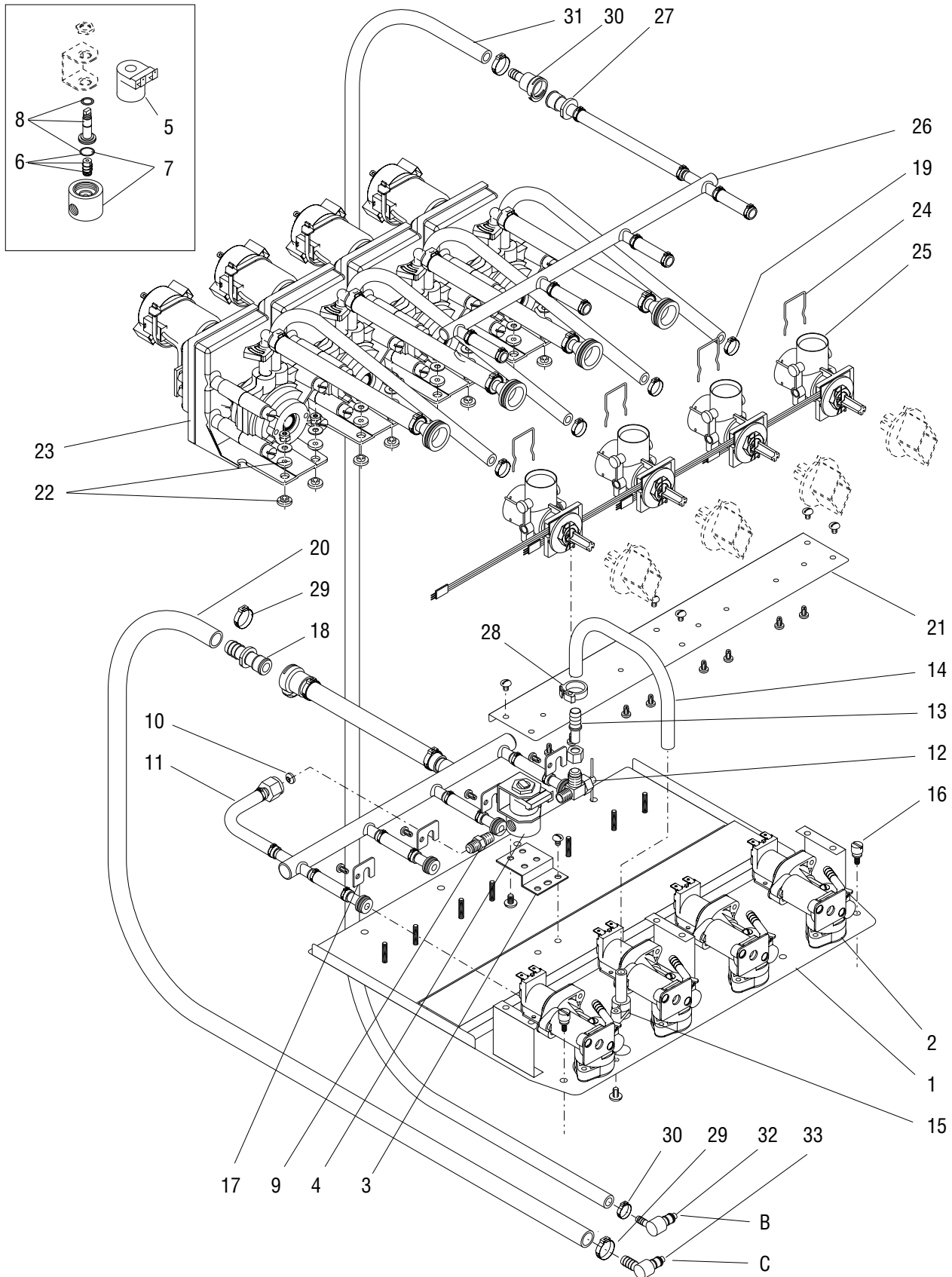
P3132.60

NOTE: Letters appearing within this illustration correspond to matching connections in other illustrations.

WATER VALVE & LINES

ITEM	PART NO.	QTY.	DESCRIPTION
31	00402.0001	2	Connector
32	01085.0002	1	Valve, Solenoid 120V (Includes items 33 - 36)
	28005.0000	1	Valve, Solenoid 230V (Includes items 33 - 35)
	01327.0000	2	Screw #10-32 x .625" 120V
	01317.0003	2	Screw #8-32 x .38" 230V
33	28480.0000	1	Solenoid Valve Coil 120V
	28020.0000	1	Solenoid Valve Coil 230V
34	01111.0002	1	Solenoid Valve Repair Kit (Includes Plunger, Spring and O-ring)
35	28479.0000	1	Solenoid Valve Base Kit 120V (Includes O-ring)
	28021.0000	1	Core Assy Kit 230V
36	28481.0000	1	Guide Kit
37	21275.0006	6	Clamp .41" - .51"
38	32745.0033*	1	Hose .25" ID x 5.5" lg (Order item 46)
39	32761.0000	1	Elbow .25" Barb
40	32745.0021*	1	Hose .25" ID x 15.75" lg (Order item 46)
41	37019.0000	1	Fitting, Quick Connect
42	33466.0000	1	Decal, Water Bath Fill Valve
43	33467.0000	1	Decal, Main Water Valve
44	00656.0000	1	Decal, Comply to Plumbing Code
45	27410.0000	1	Clip, Tubing Mount
46	32745.1002	-	Hose .25" ID x 120.0" lg (Use as required)
47	34325.1002	-	Hose .38" ID x 120.0" lg (Use as required)
48	32745.1000	-	Hose .25" ID x 12.0" lg (Use as required)

* Indicates the part number listed is for reference only. See DESCRIPTION for possible service replacement.



NOTE: Letters appearing within this illustration correspond to matching connections in other illustrations.

P3548.65

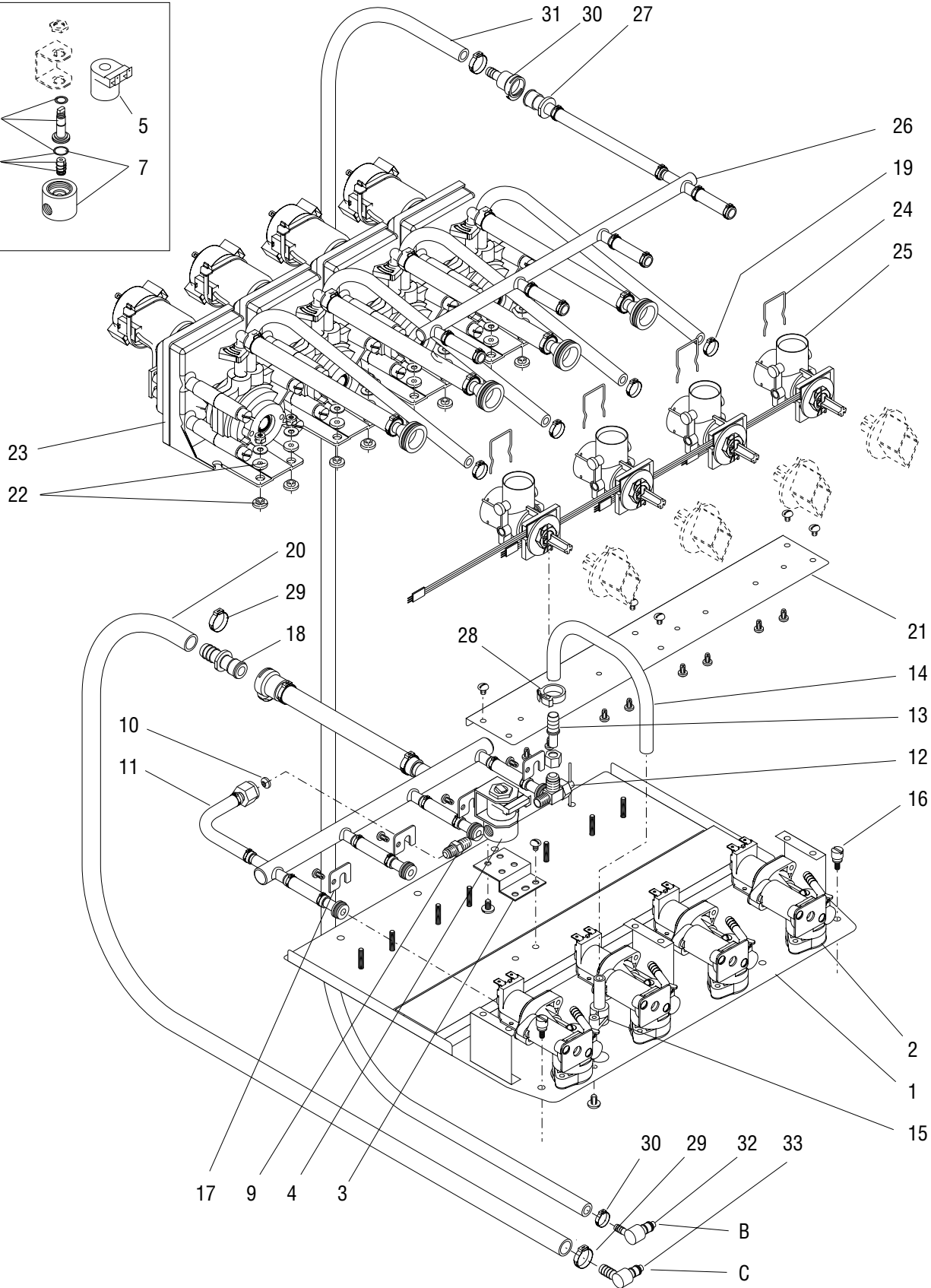
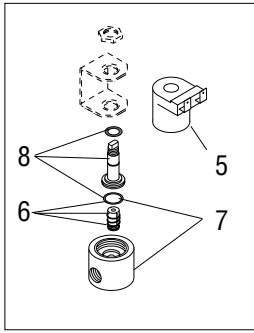
DISPENSE PLATFORM ASSEMBLY

ITEM	PART NO.	QTY.	DESCRIPTION
1	38110.1000	1	Platform Assy (Includes items 1 - 33)
2	----- 32860.0000	4 8	Dispense Valve (See DISPENSE VALVE ASSY) Screw #8-18 x .312"
3	20201.4301 01311.0001	1 2	Bracket Screw, Locking #8-32 x .25"
4	32757.0000 01326.0002	1 2	Valve Assy, Water (Includes items 5 - 8) Screw, Locking #10-32 x .312"
5	33582.0000	1	Solenoid Valve Coil
6	01111.0002	1	Solenoid Valve Repair Kit (Includes Plunger, Spring and O-ring)
7	-----	1	Solenoid Valve Base Kit (Not serviced, order item 4)
8	28481.0000	1	Guide Kit
9	00402.0001	1	Connector
10	33149.0001	1	Gasket
11	-----	1	Manifold, Plain Water (See PLAIN WATER MANIFOLD ASSY)
12	00408.0001	1	Valve, Adjustment
13	27170.0002 00443.0001	1 1	Fitting Compression Nut & Sleeve
14	28526.0028*	1	Hose, Silicone .313" O.D. x 9.5" (Order item 35)
15	32008.0000 01360.0002	1 1	Fitting, Cold Water Socket Screw, Pan Head #6-32 x 3/8"
16	38104.0000	2	Thumbscrew
17	37786.0000 01308.0000	4 4	Plate Screw #6-32 x .25"
18	34462.0000	1	Fitting, Quick Disconnect, Male
19	21275.0003	4	Clamp .57"/.70"
20	34325.0005*	1	Hose .38" ID x .595" OD x 36.0" (Order item 36)
21	37166.0000 01311.0001	1 6	Rail Screw, Locking #8-32 x .25"
22	32957.0001	16	Bushing, Rubber

(Continued)

* Indicates the part number listed is for reference only. See DESCRIPTION for possible service replacement.

(Continued)



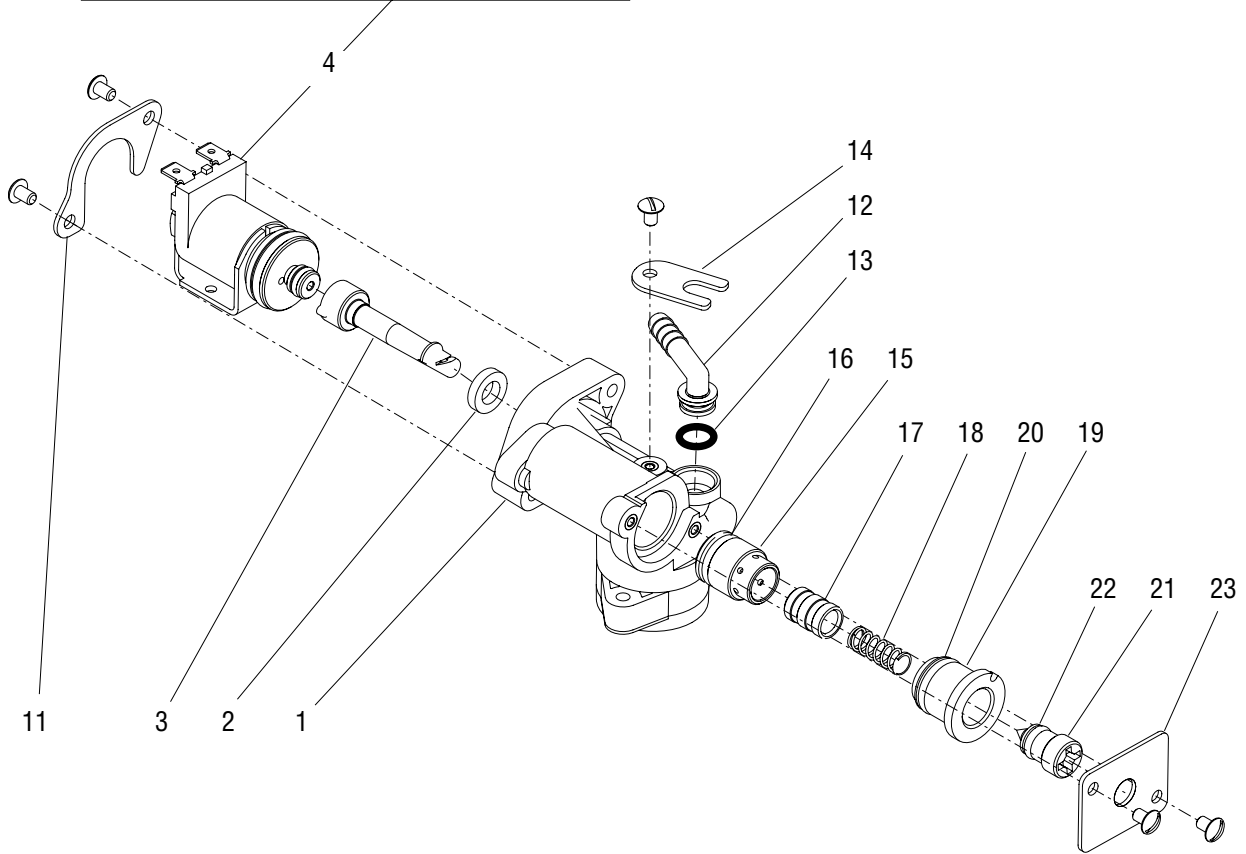
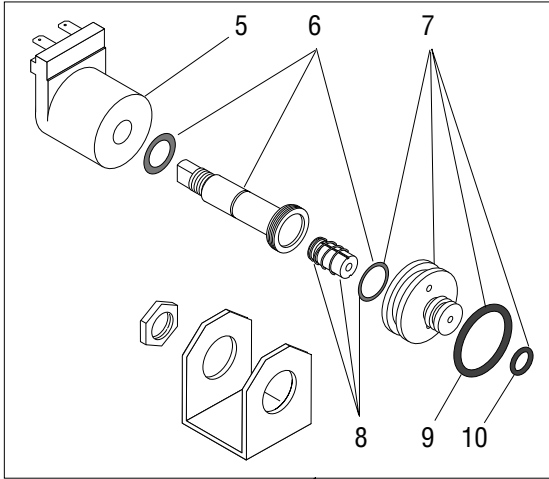
NOTE: Letters appearing within this illustration correspond to matching connections in other illustrations.

P3548.65

DISPENSE PLATFORM ASSEMBLY

ITEM	PART NO.	QTY.	DESCRIPTION	
23	-----	4	Pump Assy (See PUMP ASSEMBLY)	
	01338.0000	4	Screw 38-32 x .625"	
	01522.0000	8	Washer	
	00991.0000	4	Nut, Elastic Lock #8-32	
24	32458.0000	4	Clip, Retainer	
25	-----	4	Bottle Adapter (See BOTTLE ADAPTER ASSY)	
	32860.0000	8	Screw #8-18 x .312"	
26	-----	1	Manifold, Rinse Water (See RINSE WATER MANIFOLD ASSY)	
27	34461.0000	1	Fitting, Quick Disconnect, Female	
28	12422.0000	1	Clamp .47"/.54"	
29	21275.0003	2	Clamp .57"/.70"	
30	21275.0006	2	Clamp .41"/.50"	
31	32745.0026*	1	Hose, Silicone .25" ID x 32.0" (Order item 37)	
32	37016.0000	1	Fitting, Quick Connect, Male .25" Barb	
33	37015.0000	1	Fitting, Quick Connect, Male .38" Barb	
34	28526.1000	-	Hose, Silicone .313" O.D. x 12.0" (Use as required)	} Not Illustrated
35	34325.1000	-	Hose .38" ID x .595" OD x 12.0" (Use as required)	
	34325.1001	-	Hose .38" ID x .595" OD x 36.0" (Use as required)	
	34325.1002	-	Hose .38" ID x .595" OD x 120.0" (Use as required)	
36	32745.1002	-	Hose .25" ID x 120.0" (Use as required)	
37	33180.0000	1	Wiring Harness, Platform Rear	
38	33140.0001	1	Wiring Harness, Dispense Valve	
39	M2337.1000	-	Insulation, Tube .50" ID x 72.0" (Use as required)	

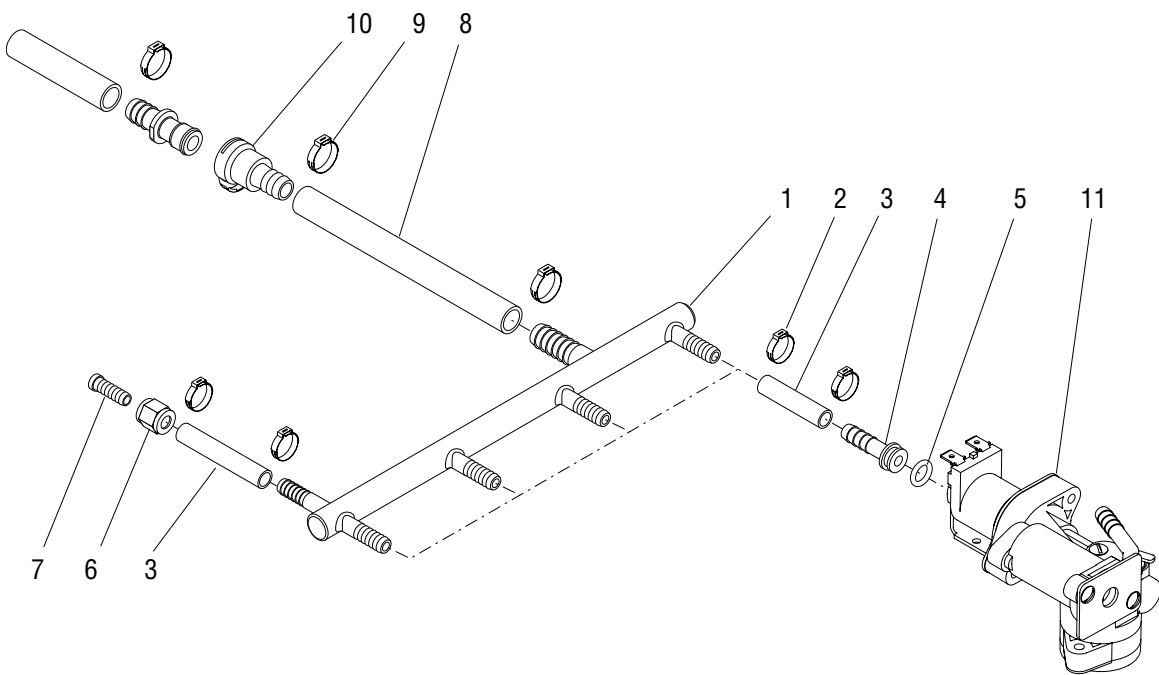
* Indicates the part number listed is for reference only. See DESCRIPTION for possible service replacement.



DISPENSE VALVE ASSEMBLY

ITEM	PART NO.	QTY.	DESCRIPTION
-	38018.1000	1	Dispense Valve Assy (Includes items 1 - 24)
1	37801.0001	1	Body
2	37990.0000	1	Seal
3	37843.0000	1	Nozzle, Water
4	32252.0000	1	Valve, Solenoid (Includes items 5 - 10)
5	33554.0000	1	Solenoid Valve Coil
6	28481.0000	1	Guide Kit (Includes Guide, Washer and O-ring)
7	33585.0000	1	Solenoid Valve Base Kit (Includes O-ring and items 6 & 7)
8	01111.0002	1	Solenoid Valve Repair Kit (Includes Plunger, Spring and O-ring)
9	33580.0000	1	O-ring
10	33553.0000	1	O-ring
11	37987.0000	1	Bracket
	01308.0000	2	Screw #6-32 x .25"
12	32463.0000	1	Fitting, Elbow
13	32849.0001	1	O-ring (Also use item 24)
14	37853.0000	1	Clamp
	01308.0000	1	Screw #6-32 x .25"
15	32603.0000	1	Sleeve
16	32852.0000	1	O-ring (Also use item 24)
17	32602.0000	1	Piston
18	32853.0001	1	Spring, Flow Control
19	32624.0000	1	Bonnet, Adjuster
20	33725.0000	1	O-ring (Also use item 24)
21	32623.0000	1	Adjuster, Position
22	32851.0000	1	O-ring (Also use item 24)
23	37977.0000	1	Bracket, Water Adjustment
	01308.0000	2	Screw #6-32 x .25"
24	M2568.0000	-	Grease, USDA H-1 (Use when assembling items 13,16,20 & 22)

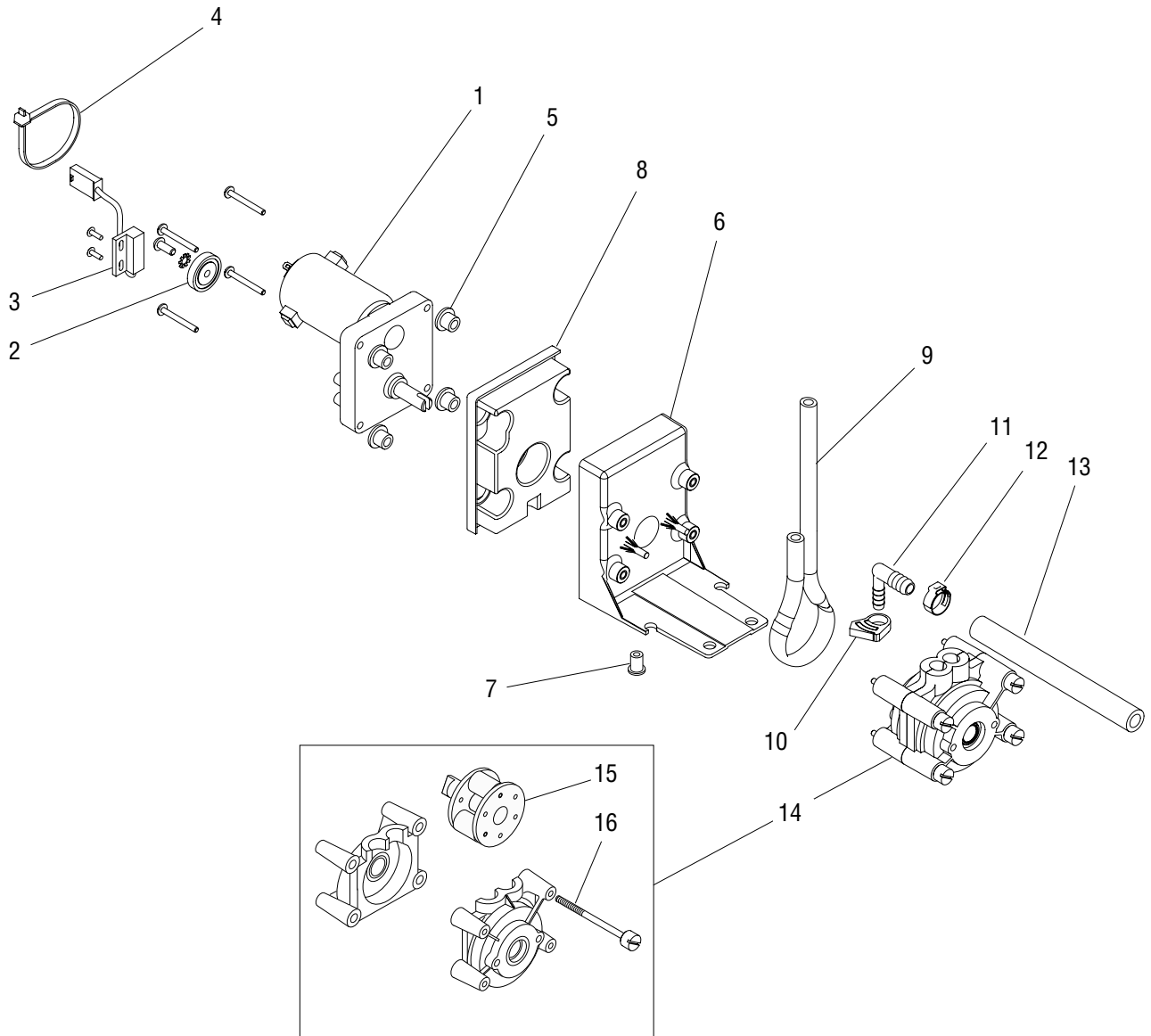
* Indicates the part number listed is for reference only. See DESCRIPTION for possible service replacement.



PLAIN WATER MANIFOLD

ITEM	PART NO.	QTY.	DESCRIPTION
1	34423.0000	1	Manifold, SST
2	21275.0006	10	Clamp .40 - .50"
3	38129.0005*	5	Hose .25" ID x .44" OD x 2.25" (Order item 13)
4	32631.0000	4	Fitting
5	32849.0001	4	O-ring
6	35327.0000	1	Nut, Compression
7	35326.0000	1	Nipple
8	34325.0009*	1	Hose .38" ID x .595" OD x 3.50" (Order item 12)
9	21275.0003	2	Clamp .57 - .70"
10	34463.0000	1	Fitting, Quick Disconnect, Female
11	-----	4	Dispense Valve (See DISPENSE VALVE)
12	34325.1000	-	Hose .38" ID x .595" OD x 12.0" (Use as required)
	34325.1001	-	Hose .38" ID x .595" OD x 36.0" (Use as required)
	34325.1002	-	Hose .38" ID x .595" OD x 120.0" (Use as required)
13	38129.1000	-	Hose .25" ID x .44" OD x 12.0" (Use as required)
	38129.1001	-	Hose .25" ID x .44" OD x 36.0" (Use as required)
	38129.1002	-	Hose .25" ID x .44" OD x 120.0" (Use as required)

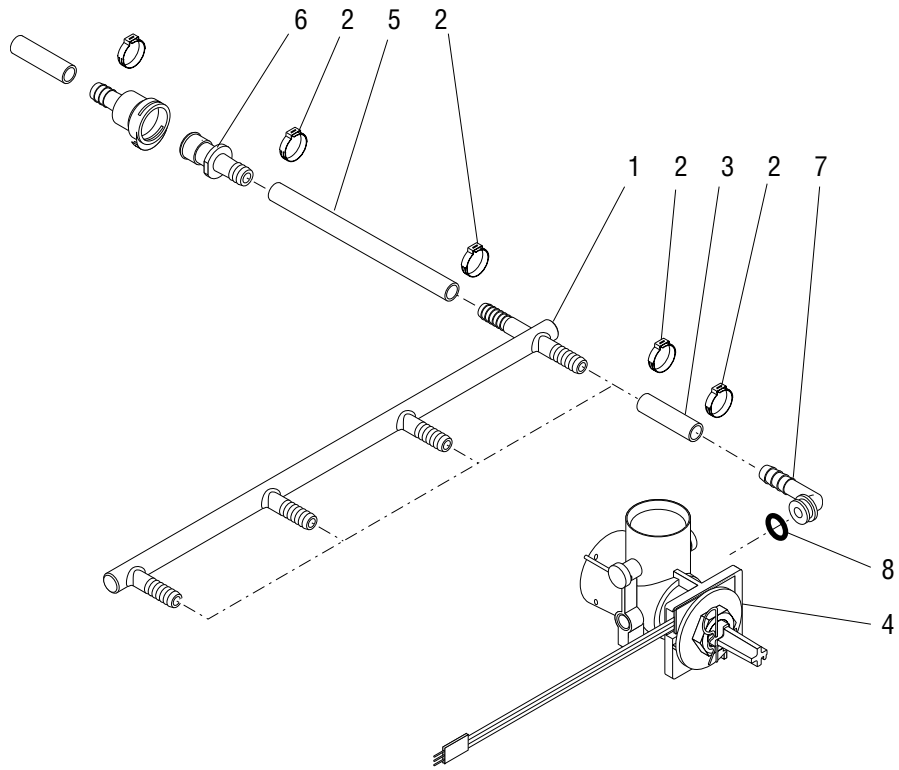
* Indicates the part number listed is for reference only. See DESCRIPTION for possible service replacement.



PUMP ASSEMBLY

ITEM	PART NO.	QTY.	DESCRIPTION
-	33803.1001	1	Pump Assy (Includes items 1 - 29)
1	32613.0002	1	Motor Assy
	01322.0001	4	Screw, Round Head #8-32 x 1.25"
2	32654.0000	1	Magnet Hub
	01512.0000	1	Lockwasher, Internal-tooth #10
	01331.0004	1	Screw, Locking #10-32 x .50"
3	33608.1000	1	Sensor, RPM
	02336.0000	2	Screw #4-40 x .38"
4	07130.0000	1	Cable Tie
5	32957.0000	4	Bushing
6	37152.0001	1	Mount Assy, Pump
7	29904.0000	1	Insert, Well Nut #8-32
8	33781.0000	1	Gasket
9	28755.0009*	1	Tube, Norprene .25" ID x 18.0" lg (Order item 17)
10	32732.0000	1	Clamp .39"/.48"
11	32656.0000	1	Fitting, Elbow .25" Barb x .38" Barb
12	21275.0003	1	Clamp .57"/.70"
13	34325.0002*	1	Hose, Flex .375" ID x 6.0" lg (Order item 18)
14	28759.0000	1	Pump Assy. (Includes items 15 & 16)
15	28794.0000	1	Rotor
16	01370.0001	4	Screw, Pan Head #8-32 x 2.45"
17	28755.1000	-	Tube, Neoprene .25" ID x .45" OD x 12.0" (Use as required)
	28755.1001	-	Tube, Neoprene .25" ID x .45" OD x 36.0" (Use as required)
	28755.1002	-	Tube, Neoprene .25" ID x .45" OD x 60.0" (Use as required)
18	34325.1000	-	Hose, Flex .375" ID x 12.0" (Use as required)
	34325.1001	-	Hose, Flex .375" ID x 36.0" (Use as required)
	34325.1002	-	Hose, Flex .375" ID x 120.0" (Use as required)

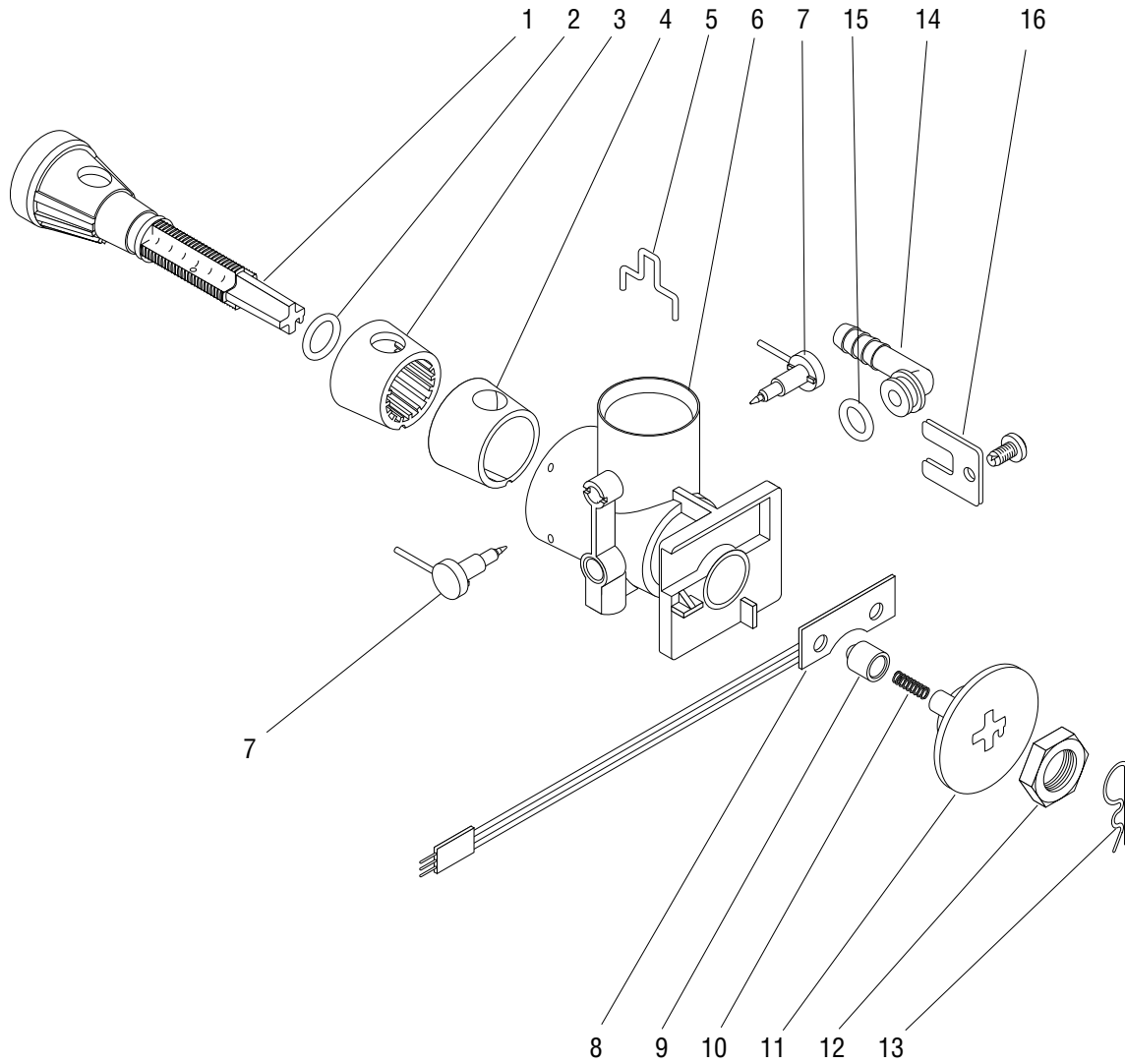
* Indicates the part number listed is for reference only. See DESCRIPTION for possible service replacement.



RINSE WATER MANIFOLD

ITEM	PART NO.	QTY.	DESCRIPTION
1	34424.0000	1	Manifold, SST
2	21275.0006	10	Clamp .40 - .50"
3	38129.0003*	4	Hose .25" ID x .44" OD x 1.25" (Order item 9)
4	-----	4	Bottle Adapter (See BOTTLE ADAPTER)
5	38129.0004*	1	Hose .25" ID x .44" OD x 3.50" (Order item 9)
6	34460.0000	1	Fitting, Quick Disconnect, Male
7	32463.0000	1	Fitting, Elbow
8	32849.0001	1	O-ring (Also order item 10)
9	38129.1000	-	Hose .25" ID x .44" OD x 12.0" (Use as required)
	38129.1001	-	Hose .25" ID x .44" OD x 36.0" (Use as required)
	38129.1002	-	Hose .25" ID x .44" OD x 120.0" (Use as required)
10	M2568.0000	-	Grease, USDA H-1

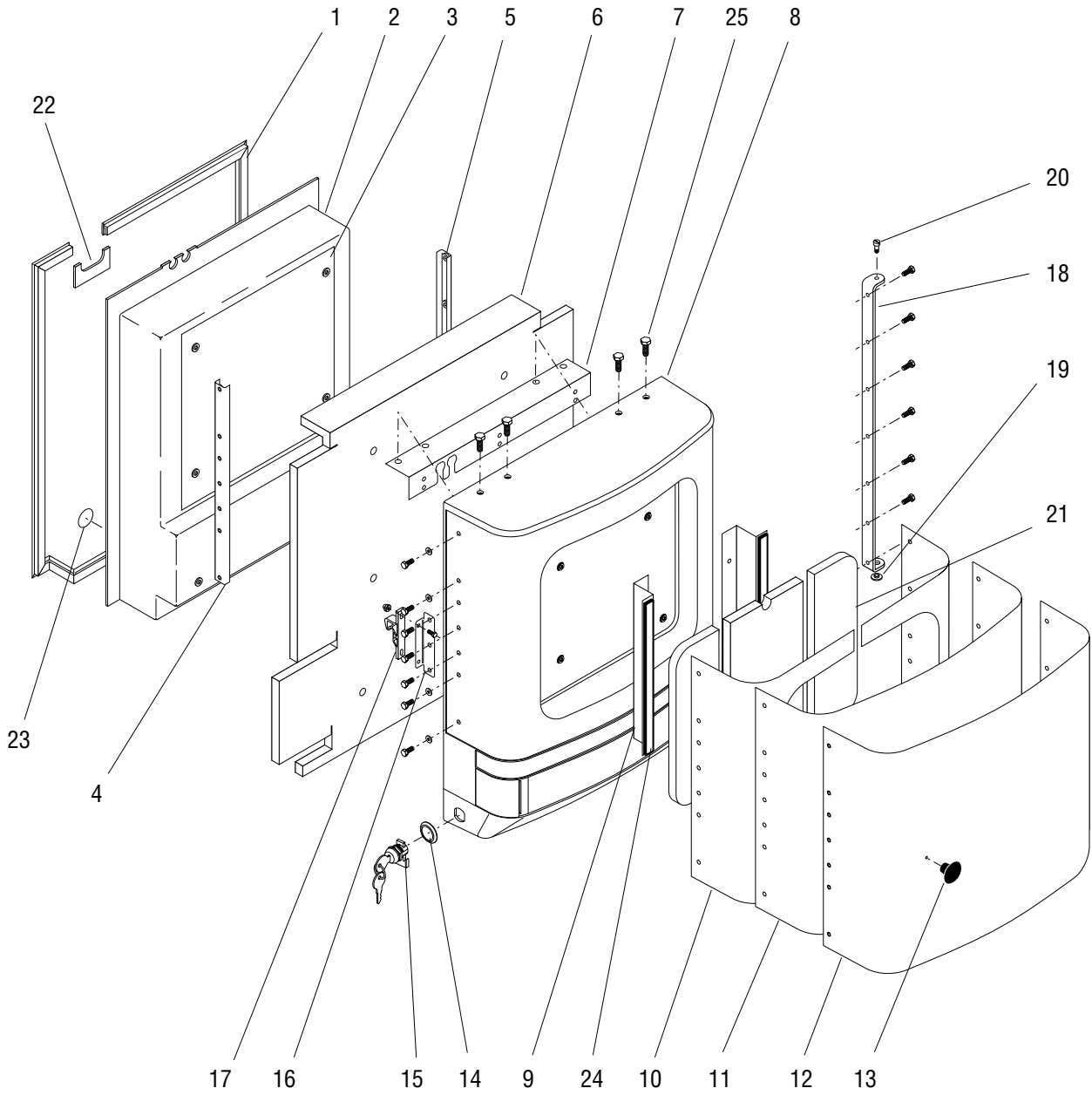
* Indicates the part number listed is for reference only. See DESCRIPTION for possible service replacement.



BOTTLE ADAPTER ASSEMBLY

ITEM	PART NO.	QTY.	DESCRIPTION
-	32756.1000	1	Adapter Assy, Bottle (Includes items 1 - 16)
1	32456.0000	1	Spool
2	36301.0000	1	O-ring
3	32625.0000	1	Seal, Rotary
4	33515.0000	1	Boot, Teflon (Also order item 17)
5	-----	1	Opener (Order item 6)
6	32453.1000	1	Body Assy. (Includes items 5 & 7)
7	-----	2	Probe (Order item 6)
8	34032.1000	1	Switch, Membrane
9	32663.0000	1	Detent, Membrane Switch
10	33042.0000	1	Spring
11	32469.0000	1	Plate, Detent
12	00942.0002	1	Nut, Brass w/Tin Plate .50-20"
13	21358.0001	1	Clip, Retainer
14	32463.0000	1	Fitting, Elbow
15	32849.0001	1	O-ring (Also order item 17)
16	32846.0000	1	Plate
	01326.0004	1	Screw, Locking #10-32 x .438"
17	M2568.0000	-	Grease, USDA H-1 (Use when installing items 4 & 15)

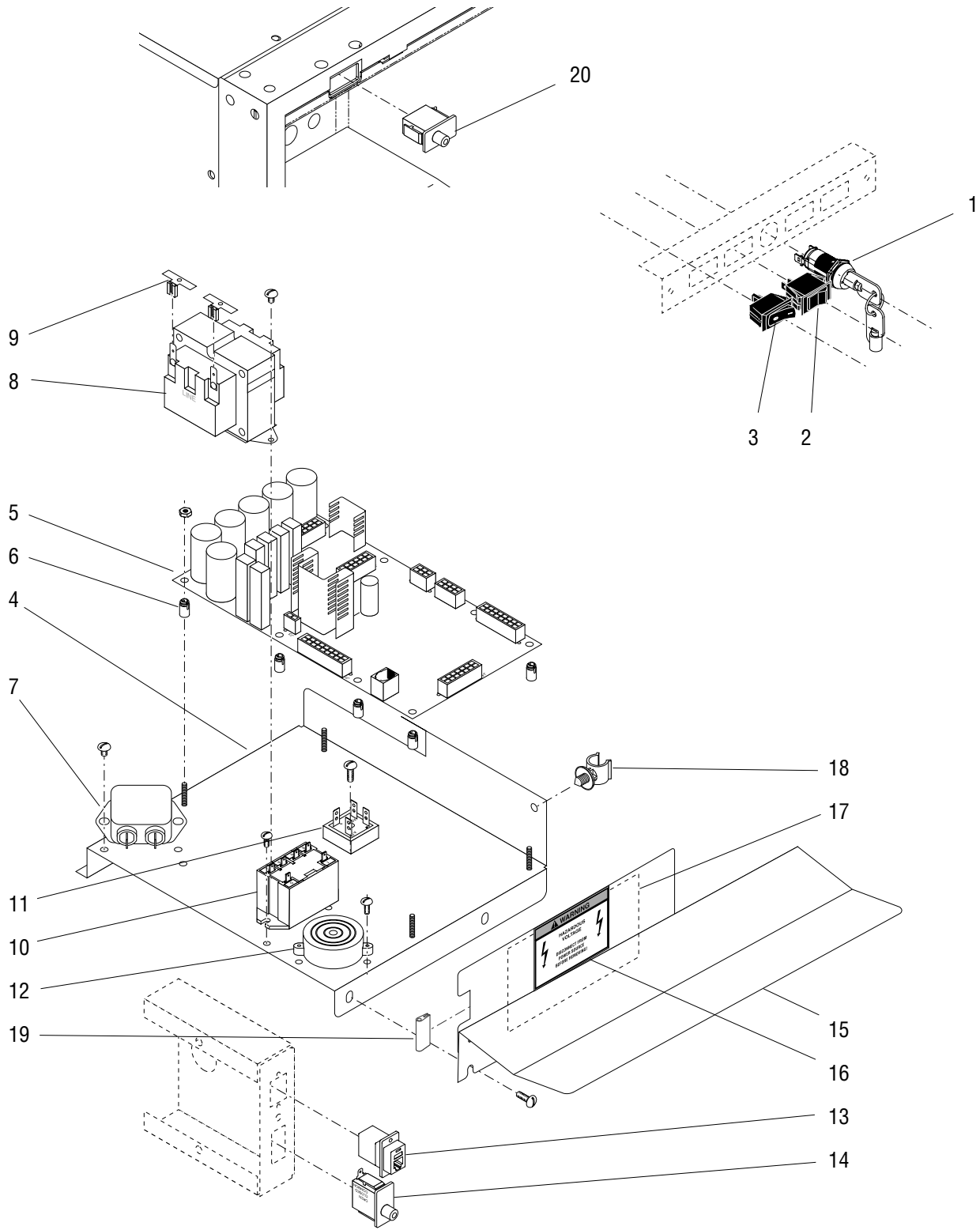
* Indicates the part number listed is for reference only. See DESCRIPTION for possible service replacement.



DOOR ASSEMBLY

ITEM	PART NO.	QTY.	DESCRIPTION
-	-----	-	Door Assy
1	33871.0000	1	Gasket
2	33793.0000 24544.0000	1 6	Panel, Inside Screw #8-18
3	35570.0000	1	Decal, Cleaning & Sanitizing
4	36842.0001 37257.0000 01522.0000	1 7 4	Support Screw, Hex Head #8-32 x .50" Washer
5	36842.0000	1	Support
6	33864.0000	1	Insulation
7	33819.0000 24544.0000	1 6	Angle Screw #8-18
8	33777.0002	1	Cover, Front
9	35266.0000 24544.0000	2 4	Bracket Screw #8-18
10	33812.0000	2	Pad, Adhesive, Left & Right
11	33870.0002*	1	Cover
12	35566.0000	1	Decal, Door Wrap
13	00725.0001 02311.0000	1 1	Knob Screw, Hex Head #10-32 x .50"
14	33895.0000	1	Collar, Lock
15	32863.0000	1	Keylock w/Keys
16	36886.0001*	1	Bracket, Latch
17	34667.0000 37712.0000 02319.0000	1 2 2	Keeper, Door Latch Screw, Hex Head #6-32 x .38" Nut, Acorn #6-32
18	36813.0001* 37257.0000	1 7	Hinge Screw, Hex Head #8-32 x .50"
19	34362.0001	1	Bushing
20	34741.0000	1	Shoulder Screw #8-32 x .313"
21	34019.0000	1	Insulation, Light Box (Unlighted Models)
22	32620.0001	1	Gasket
23	35572.0000	3	Decal 1.0" Dia. White
24	35344.0000*	2	Pad, Adhesive
25	35423.0000	4	Screw, Hex-hd. .25"-20 x .75"

* Indicates the part number listed is for reference only. See DESCRIPTION for possible service replacement.



ELECTRICAL COMPONENTS

ITEM	PART NO.	QTY.	DESCRIPTION
1	36912.0000	1	Lock Assy, Switch w/Keys
2	01063.0000	1	Switch, Sanitize
3	04786.0004	1	Switch, Refrigeration ON/OFF
4	36560.0001	1	Platform, Electrical Components
5	32673.1001	1	Circuit Board
	00973.0000	4	Nut, Keps #6-32
6	29081.0000	8	Spacer
7	29446.0000	1	EMI Filter (230V Models only)
	01311.0001	2	Screw, Truss Head, Locking #8-32 x .25"
8	32824.0001	1	Transformer 120V
	32824.0002	1	Transformer 230V
	01311.0001	2	Screw, Truss Head, Locking #8-32 x .25"
9	01679.0000	2	Terminal, Adapter Tee
10	37711.0000	1	Relay 120V
	37711.0001	1	Relay 230V
	01317.0003	2	Screw, Truss Head, Locking #6-32 x .38"
11	22126.0000	1	Rectifier
	01370.0000	1	Screw, Pan Head #8-32 x .75"
12	33147.0000	1	Indicator, Audio
	01382.0000	2	Screw, Truss Head #6-32 x .38"
13	36909.0000	1	Modular Coupler
	35610.0000*	2	Rivet
14	38117.0000	1	Switch, Interconnect
15	38118.0000	1	Drip Shield, Circuit Board
	35420.0000	2	Screw, Hex Head #10-32 x .38"
16	12559.0003	1	Decal, Warning - Hazardous Voltage
17	33647.0000	1	Decal, Dip Switch
18	27410.0000	1	Clip, Tubing Mount
19	02434.0013*	1	Gasket, U-channel 1.0" (Order item 33)
20	32841.0000	1	Switch, Door Open

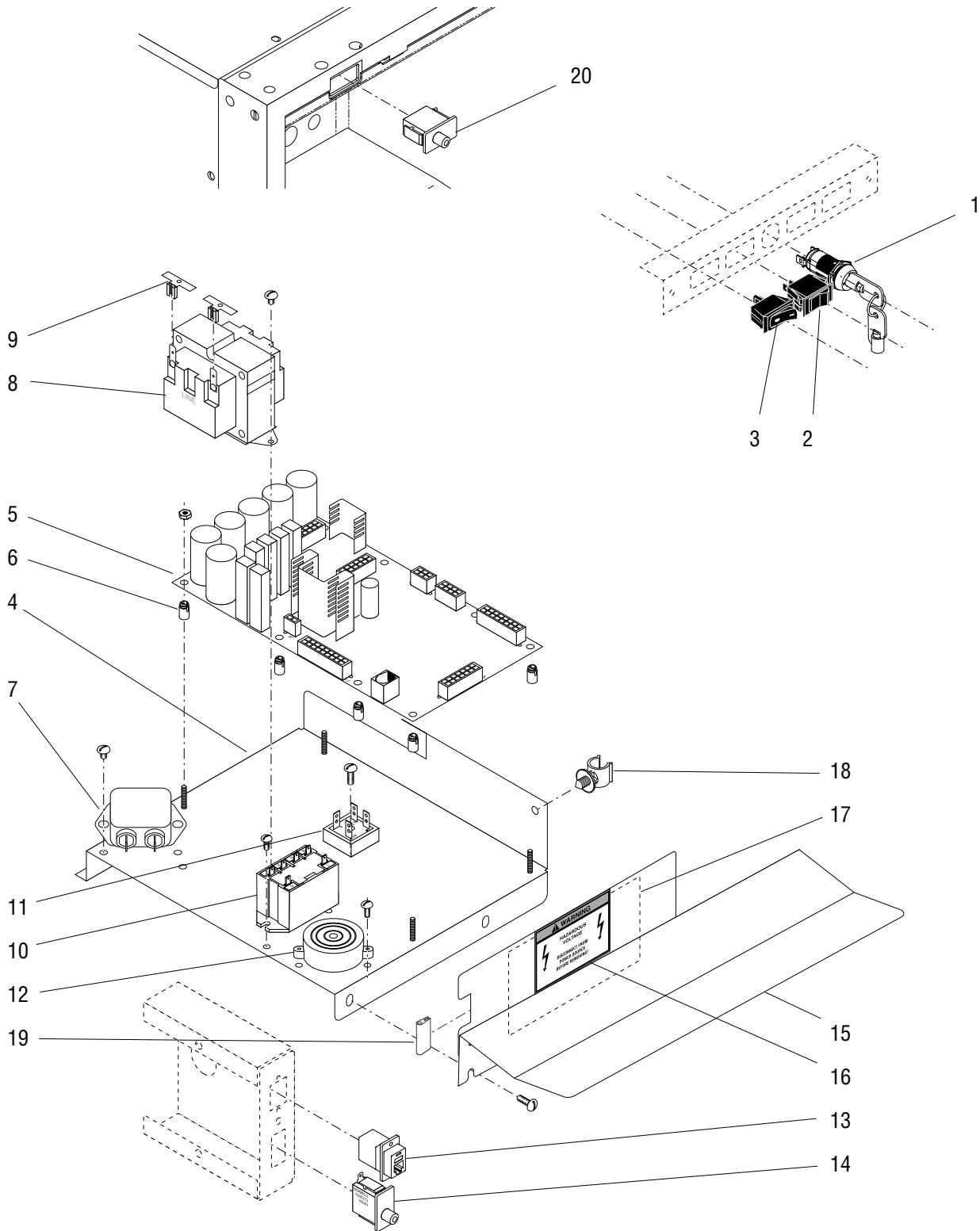
The following items are not illustrated

21	05746.0000	1	Bushing, Strain Relief
22	35260.0000	2	Cable Mount
23	00617.0000	3	Cable Tie
24	20630.0007	1	Power Cord 120V
	27728.0009	1	Power Cord 230V

(Continued)

* Indicates the part number listed is for reference only. See DESCRIPTION for possible service replacement.

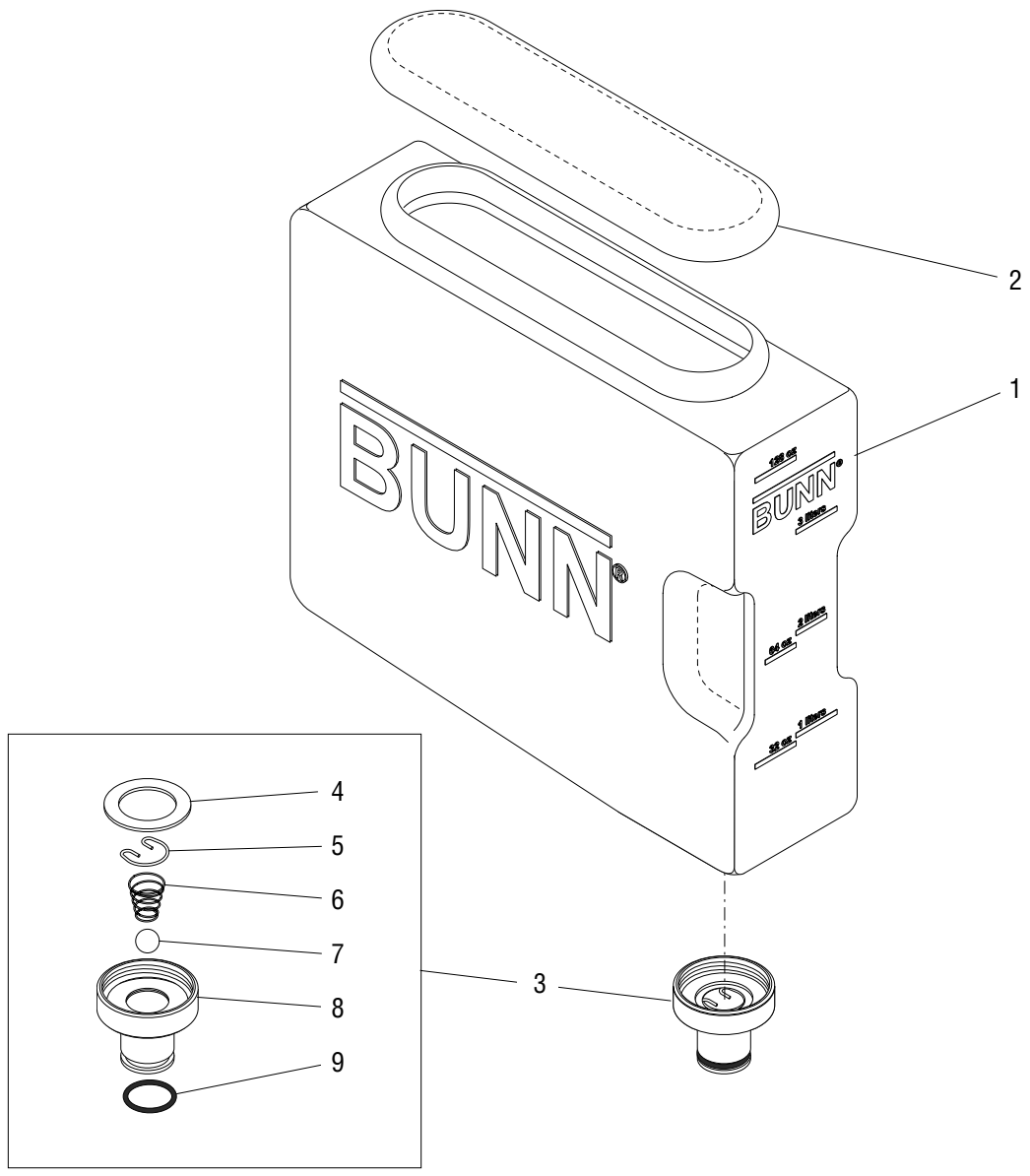
(Continued)



ELECTRICAL COMPONENTS

ITEM	PART NO.	QTY.	DESCRIPTION
25	25662.0001	1	Cord Assy, DBC Display
26	36899.0000	1	Wiring Harness, Refrigeration
27	36911.0000	1	Wiring Harness, Cabinet Main 120V
	36911.0001	1	Wiring Harness, Cabinet Main 230V
28	33115.0000	1	Wiring Harness, Cabinet Fan
29	36999.0000	1	Wiring Harness, Utility Cover
30	36993.0000	1	Wiring Harness, Cobra Head
31	36998.0000	1	Wiring Harness, Membrane Switch to Circuit Board
32	38507.0000	1	Wiring Harness, Disconnect Switch (230V only)
33	02434.1000	-	Gasket, U-channel 18.0" (Use as required)

* Indicates the part number listed is for reference only. See DESCRIPTION for possible service replacement.



REFILLABLE CONTAINER ASSEMBLY

ITEM	PART NO.	QTY.	DESCRIPTION
-	33931.0000	1	Container Assy (Includes items 1-9)
1	32167.1000	1	Container w/Lid (Includes item 2)
2	33893.0002*	1	Lid (Order item 1)
3	33953.1000	1	Fitting Assy (Includes items 4-9)
4	32165.0000	1	Gasket
5	32166.0000	1	Retaining Clip
6	32877.0000	1	Spring
7	00598.0002	1	Ball
8	32168.0000	1	Fitting
9	34261.0000	1	O-ring

* Indicates the part number listed is for reference only. See DESCRIPTION for possible service replacement.

NUMERICAL INDEX

PART NO.	PAGE NO.	PART NO.	PAGE NO.	PART NO.	PAGE NO.	PART NO.	PAGE NO.
00396.0002.....	15	12422.0000.....	29	29951.0001.....	15	32957.0000.....	35
00402.0001.....	25,27	12422.0009.....	9	29976.0000.....	11	32957.0001.....	27
00408.0001.....	27	12422.0012.....	9	32008.0000.....	27	33042.0000.....	39
00441.0000.....	23	12559.0003.....	43	32165.0000.....	47	33068.0000.....	19
00442.0001.....	23	12756.0000.....	23	32166.0000.....	47	33113.0000.....	23
00443.0001.....	27	12757.0000.....	23	32167.1000.....	47	33114.0000.....	23
00510.0004.....	23	20201.4301.....	27	32168.0000.....	47	33115.0000.....	45
00598.0002.....	47	20203.0100.....	19	32252.0000.....	31	33140.0001.....	29
00617.0000.....	19,43	20630.0007.....	43	32307.0000.....	7	33147.0000.....	43
00656.0000.....	13,25	20976.0062.....	19	32360.0002.....	23	33149.0000.....	23
00669.0000.....	7	20976.1000.....	21	32448.1000.....	7	33149.0001.....	23,27
00725.0001.....	41	21195.0001.....	23	32453.1000.....	39	33150.0000.....	23
00764.0000.....	5	21275.0003.....	7,19,23,27	32455.0000.....	7	33151.0005.....	23
00901.0000.....	15	21275.0003.....	29,33,35	32456.0000.....	39	33180.0000.....	29
00908.0000.....	19	21275.0006.....	25,29,33,37	32458.0000.....	29	33297.0000.....	7
00942.0002.....	39	21275.0009.....	19	32461.0000.....	7	33458.0000.....	13
00973.0000.....	19,43	21358.0001.....	39	32463.0000.....	31,37,39	33459.0001.....	7
00986.0002.....	5	21431.0003.....	15	32467.1000.....	7	33459.0002.....	7
00991.0000.....	29	22029.0001.....	23	32469.0000.....	39	33460.0000.....	13
01063.0000.....	43	22126.0000.....	43	32613.0002.....	35	33461.0000.....	5
01085.0002.....	25	22349.0001.....	11	32620.0001.....	41	33466.0000.....	25
01111.0002.....	25,27,31	23700.0000.....	17	32621.0000.....	7	33467.0000.....	25
01308.0000.....	27,31	24544.0000.....	7,19,41	32623.0000.....	31	33511.0000.....	7
01311.0000.....	23	25662.0001.....	45	32624.0000.....	31	33515.0000.....	39
01311.0001.....	27,43	26376.0000.....	13	32625.0000.....	39	33519.0000.....	19
01317.0003.....	15,19,25,43	26528.0000.....	5,13	32631.0000.....	33	33522.0000.....	15
01322.0001.....	35	27170.0002.....	27	32654.0000.....	35	33522.0001.....	15
01326.0002.....	11,27	27243.0000.....	17	32656.0000.....	35	33533.0000.....	19
01326.0004.....	39	27246.0000.....	7	32663.0000.....	39	33536.0000.....	15
01327.0000.....	25	27258.0000.....	17	32673.1001.....	43	33553.0000.....	31
01331.0004.....	35	27394.0000.....	7	32732.0000.....	35	33554.0000.....	31
01338.0000.....	29	27410.0000.....	25,43	32734.0001.....	19	33571.0000.....	9
01345.0000.....	7	27442.0000.....	5	32745.0021.....	25	33580.0000.....	31
01360.0002.....	27	27728.0009.....	43	32745.0033.....	25	33582.0000.....	27
01370.0000.....	43	28005.0000.....	25	32745.1000.....	25	33585.0000.....	31
01382.0000.....	7,43	28020.0000.....	25	32745.0026.....	29	33602.0000.....	17
01512.0000.....	35	28021.0000.....	25	32745.1002.....	25,29	33603.0000.....	17
01514.0000.....	23	28479.0000.....	25	32749.0001.....	23	33603.0001.....	17
01522.0000.....	19,29,41	28480.0000.....	25	32750.0001.....	19	33608.1000.....	35
01592.0000.....	11	28481.0000.....	25,27,31	32756.1000.....	39	33623.0000.....	7,19,23
01679.0000.....	43	28511.0000.....	15	32757.0000.....	27	33645.0000.....	13
02311.0000.....	41	28512.0000.....	15	32761.0000.....	25	33647.0000.....	43
02319.0000.....	41	28526.0028.....	27	32763.0000.....	7	33670.0008.....	21
02335.0001.....	15	28526.1000.....	29	32776.0001.....	15	33686.0000.....	23
02336.0000.....	35	28567.0000.....	15	32824.0001.....	43	33725.0000.....	31
02340.0001.....	7	28755.0009.....	35	32824.0002.....	43	33777.0002.....	41
02434.0013.....	43	28755.1000.....	35	32841.0000.....	43	33781.0000.....	35
02434.1000.....	45	28755.1001.....	35	32846.0000.....	39	33785.1000.....	11
02536.0000.....	19	28755.1002.....	35	32848.0000.....	7	33786.0001.....	7
02645.1000.....	19	28759.0000.....	35	32849.0001.....	31,33,37,39	33793.0000.....	41
03290.0000.....	21	28794.0000.....	35	32851.0000.....	31	33794.0000.....	7
03996.0000.....	5,13	29081.0000.....	43	32860.0000.....	27,29	33801.0000.....	19
04786.0004.....	43	29327.0000.....	19	32863.0000.....	41	33801.0002.....	19
05746.0000.....	43	29446.0000.....	43	32877.0000.....	47	33803.1001.....	35
07130.0000.....	35	29904.0000.....	35	32885.0000.....	13	33804.0009.....	7

NUMERICAL INDEX

PART NO.	PAGE NO.	PART NO.	PAGE NO.	PART NO.	PAGE NO.	PART NO.	PAGE NO.
33804.0010.....	7	35305.0000.....	21	36998.0000.....	45		
33812.0000.....	41	35326.0000.....	23,33	36999.0000.....	45		
33819.0000.....	41	35327.0000.....	23,33	37012.0001.....	9		
33857.0000.....	7	35344.0000.....	41	37014.0000.....	21		
33864.0000.....	41	35386.0001.....	15	37015.0000.....	29		
33870.0002.....	41	35420.0000.....	5,11,13,43	37016.0000.....	29		
33871.0000.....	41	35424.0000.....	9	37019.0000.....	25		
33893.0002.....	47	35566.0000.....	41	37021.0000.....	9,21		
33895.0000.....	41	35570.0000.....	41	37152.0001.....	35		
33931.0000.....	47	35572.0000.....	41	37166.0000.....	27		
33953.1000.....	47	35581.0001.....	15	37175.0000.....	11		
34015.0001.....	15	35610.0000.....	43	37241.0001.....	15		
34019.0000.....	41	36301.0000.....	39	37242.0001.....	15		
34032.1000.....	39	36448.0000.....	21	37243.0000.....	15		
34261.0000.....	47	36560.0001.....	43	37255.0001.....	5		
34325.0002.....	19,23,35	36565.0001.....	11	37257.0000.....	41		
34325.0003.....	9,19	36566.0001.....	11	37265.0000.....	19		
34325.0004.....	23	36567.0001.....	11	37481.0000.....	13		
34325.0005.....	7,27	36570.0000.....	11	37504.0003.....	5		
34325.0007.....	23	36611.0001.....	13	37537.0000.....	15		
34325.0008.....	23	36612.0000.....	13	37549.0000.....	5		
34325.0006.....	21,23	36613.0001.....	13	37550.0000.....	5		
34325.0009.....	33	36614.0001.....	13	37552.0000.....	21		
34325.0010.....	21	36793.0000.....	23	37568.0000.....	5		
34325.0012.....	21	36794.0000.....	15	37568.0001.....	5		
34325.0014.....	21	36807.0000.....	5	37711.0000.....	43		
34325.0023.....	7	36810.0000.....	7	37711.0001.....	43		
34325.0024.....	7	36813.0001.....	41	37712.0000.....	41		
34325.0025.....	21	36818.0001.....	5	37786.0000.....	27		
34325.1000.....	29,33,35	36820.0001.....	5	37801.0001.....	31		
34325.1001.....	29,33,35	36821.0001.....	5	37809.1000.....	19		
34325.1002.....	9,21,25	36822.0001.....	5	37843.0000.....	31		
34325.1002.....	29,33,35	36826.0001.....	5	37853.0001.....	31		
34362.0001.....	41	36835.0001.....	13	37891.0000.....	7		
34403.1002.....	19	36837.0001.....	13	37977.0000.....	31		
34416.0000.....	19	36838.0000.....	13	37987.0000.....	31		
34423.0000.....	33,41	36842.0000.....	41	37990.0000.....	31		
34424.0000.....	37	36842.0001.....	41	38018.1000.....	31		
34460.0000.....	37	36843.0001.....	13	38110.1000.....	27		
34461.0000.....	29	36866.0001.....	5	38104.0000.....	27		
34462.0000.....	27	36868.0001.....	11	38117.0000.....	43		
34463.0000.....	33	36886.0001.....	41	38118.0000.....	43		
34540.0000.....	9	36893.0000.....	9	38129.0004.....	37		
34666.0001.....	5	36894.0000.....	21	38129.0005.....	33		
34667.0000.....	41	36899.0000.....	45	38129.0010.....	23		
34741.0000.....	41	36905.0000.....	23	38129.1000.....	33,37		
35106.0000.....	19	36906.0000.....	7	38129.1001.....	33,37		
35132.0000.....	19	36907.0001.....	15	38129.1002.....	33,37		
35164.0000.....	15	36908.0001.....	15	38507.0000.....	45		
35165.0000.....	19	36909.0000.....	43	M2336.1000.....	15		
35175.1001.....	15	36911.0000.....	45	M2337.1000.....	9,15,21,29		
35178.0000.....	15	36911.0001.....	45	M2568.1000.....	9,31,37,39		
35260.0000.....	43	36912.0000.....	43				
35266.0000.....	41	36921.0000.....	23				
35272.1001.....	19	36993.0000.....	45				