

# K3-E



LISTA DEI RICAMBI  
LIST OF SPARE PARTS  
LISTE DES PIÈCES DE RECHANGE  
ERSATZTEILLISTE  
LISTA DE REPUESTOS

**2014/09**

Edizione - Edition  
Edition - Veröffentlicht - Publicado **05**

Codice Macchina - Machine Code  
Code Machine - Maschinencode - Código de Máquina **8259**

  
**CARPIGIANI**






# CARPIGIANI

Via Emilia, 45  
40011 Anzola dell'Emilia (BO)  
Italy

+39 051 6505111

 +39 051 732178

 <http://www.carpigiani.com>

## **CARPIGIANI**

Tutti i diritti riservati

Nessuna parte di questo manuale può essere riprodotta, memorizzata in un sistema di archiviazione o trasmessa a terzi in qualsiasi forma o con qualsiasi mezzo, senza una preventiva autorizzazione scritta di CARPIGIANI.

CARPIGIANI si riserva il diritto di apportare in qualsiasi momento e senza preavviso, modifiche e miglioramenti ai suoi prodotti allo scopo di elevarne costantemente la qualità, pertanto anche questa pubblicazione può essere soggetta a modifiche.

## **CARPIGIANI**

All rights reserved

Neither the whole of this document nor any individual portion thereof may be reproduced, stored on an electronic filing system or transmitted to third parties in any form thereof any means, without the prior written consent of CARPIGIANI.

The technical data contained in this document is indicative and not binding, insofar as CARPIGIANI reserves the right to make modifications and improvements to its products at any time in order to enhance the quality thereof.

## **CARPIGIANI**

Tous droits réservés

Il est interdit de procéder à la reproduction intégrale ou partielle de ce document, à sa mise en mémoire dans un système d'archives ou à sa transmission à des tiers sous quelque forme que ce soit sans l'auto-

risation écrite préalable de CARPIGIANI.

Les données techniques contenues dans ce document sont fournies à titre indicatif et non contraignant, dans la mesure où CARPIGIANI se réserve le droit d'apporter à tout moment des modifications et des améliorations à ses produits pour en élever constamment la qualité.

## **CARPIGIANI**

Alle Rechte vorbehalten

Das vorliegende Handbuch bzw. Teile davon dürfen nicht ohne vorherige schriftliche Genehmigung der Fa. CARPIGIANI nachgedruckt, in Speichersystemen abgelegt oder in beliebiger Form und mit beliebigen Mitteln an Dritte weitergegeben werden.

Die Fa. CARPIGIANI behält sich das Recht vor, in Sinne der laufenden Steigerung der Qualität jederzeit und ohne Ankündigung Änderungen und Verbesserungen an ihren Produkten vorzunehmen. Daher kann auch die vorliegende Veröffentlichung Änderungen unterliegen.

## **CARPIGIANI**

Todos los derechos reservados

Ninguna parte de esta publicación puede ser reproducida, almacenada o transmitida de ninguna forma, no por ningún medio, sin la previa autorización escrita por parte de CARPIGIANI.

Los datos técnicos contenidos en este documento son indicativos y no constituyen compromiso, ya que CARPIGIANI se reserva el derecho de realizar en cualquier momento modificaciones y mejoras en sus productos con el objeto de incrementar constantemente su calidad.

**INDICE GENERALE**  
**GENERAL INDEX**  
**INDEX GENERAL**  
**ALLGEMEINES VERZEICHNIS**  
**INDICE GENERAL**

**ITALIANO**

INTRODUZIONE.....	5
COME CONSULTARE IL MANUALE .....	7
DESCRIZIONE DELLA TAVOLA RICAMBI.....	8
ELENCO TAVOLE REVISIONATE.....	11
INDICE DEI GRUPPI FUNZIONALI.....	a seguire
TAVOLE RICAMBI.....	a seguire

**ENGLISH**

INTRODUCTION.....	5
HOW TO USE THIS MANUAL .....	7
DESCRIPTION OF SPARE PARTS TABLES .....	8
LIST OF REVISED TABLES .....	11
INDEX OF MACHINE GROUPS AND ASSEMBLIES .....	to follow
SPARE PARTS ILLUSTRATIONS.....	to follow

**FRANÇAIS**

INTRODUCTION.....	6
COMMENT UTILISER CE MANUEL.....	7
DESCRIPTION DU TABLEAU DES PIECES DE RECHANGE .....	8
LISTE DES TABLEAUX REVISES .....	11
INDEX DES GROUPES FONCTIONNELS DE LA MACHINE .....	suivre une
TABEAU DES PIECES DE RECHANGE.....	suivre une

**DEUTSCH**

EINLEITUNG.....	6
NACHSCHLAGEN DES HANDBUCHS .....	7
BESCHREIBUNG DER ERSATZTEILTAFEL.....	8
LISTE DER ÜBERARBEITETEN TAFELN.....	11
VERZEICHNIS DER FUNKTIONSBAUGRUPPEN .....	folgt
ERSATZTEILTAFELN .....	folgt

**ESPAÑOL**

INTRODUCCION .....	6
CÓMO CONSULTAR EL MANUAL .....	7
DESCRIPCION DE LA TABLA DE RECAMBIOS .....	8
LISTA TABLAS REVISADAS .....	11
INDICE DE LOS GRUPOS FUNCIONALES DE LA MAQUINA.....	a seguir
TABLAS Y RECAMBIOS.....	a seguir

# INTRODUZIONE INTRODUCTION INTRODUCTION EINLEITUNG INTRODUCCION

## ITALIANO

### Come consultare il MANUALE PARTI DI RICAMBIO:

Il Manuale Parti di Ricambio è costituito da Tavole grafiche e da Tabelle.

#### Tavole grafiche:

- Le tavole riportano il disegno esploso dei gruppi principali della macchina.
- La suddivisione delle tavole è identificata nella TAV.0.
- Ogni particolare di ricambio è identificato da un numero di posizione, i numeri di posizione posti in un riquadro identificano i particolari di ricambio consigliati.

#### Tabelle:

- Le tabelle riportano i Numeri di Posizione, la Descrizione, il Codice del particolare e la versione della macchina.
- Nel caso in cui lo stesso numero di posizione sia riportato più volte, ma associato a codici differenti, è necessario, all'atto dell'ordine, specificare la matricola della macchina in possesso del cliente, al fine di identificare il codice del particolare da fornire.

Per ordinare uno o più particolari di ricambio identificare sulla TAV.0 la tavola in cui è rappresentato il gruppo macchina in cui è presente il particolare, identificare quindi sulla tavola il particolare ed il relativo numero di posizione, quindi ricercare sulle tabelle il numero di posizione ed il corrispondente codice.

## ENGLISH

### How o consult the SPARE PARTS MANUAL:

The Spare Parts Manual is made up of Drawing Plates and Tables.

#### Drawing Plates:

- The plates contain the exploded views of the main units comprising the machine.
- The subdivision of the plates is listed on "TAV.0".
- Each spare parts item is identified by a position number, position numbers found in a box indicate the spare parts items recommended.

#### Tables:

- The tables list the Position numbers, Descriptions, the Codes for items and the machine version.
- When the same position number appears more than once, but is also associated with different codes, specify the serial number of the customer's machine when ordering for the purpose of identifying the code for the item to be supplied.

To order one or more spare part items, identify the plate on "TAV.0" representing the machine unit on which the item is located. Locate the item on the plate and the corresponding position number as well. Then use the position number to locate the corresponding code on the table.

## FRANÇAIS

### Comment consulter le LIVRET DES PIÈCES DÉTACHÉES:

Le livret des Pièces Détachées se compose de Planches et de Tableaux.

#### Planches:

- Les planches illustrent la vue éclatée des groupes principaux de la machine.
- La "TAV.0" illustre la subdivision des différentes planches.
- Chaque pièce détachée est identifiée par un numéro de repère; les numéros de repère en encadré identifient les pièces détachées conseillées.

#### Tableaux:

- Les tableaux indiquent les Numéros de repère, la Désignation des pièces, les Codes des pièces en question et la version de la machine.
- Si la même numéro de repère indiqué plusieurs fois mais qu'il est associé à des codes différents, lors de la commande il faut préciser le numéro de série de la machine; cela permettra d'identifier le code de la pièce à fournir.

Pour commander une ou plusieurs pièces détachées, repérer sur la "TAV.0" la planche représentant le groupe dont fait partie la pièce, ensuite identifier la pièce en question sur la planche ainsi que son numéro de repère, puis rechercher sur les tableaux le numéro de repère et le code y relatif.

## DEUTSCH

### Hinweise für die Konsultation des ERSATZTEILHANDBUCHES

Das Ersatzteilhandbuch besteht aus graphischen Abbildungen und Tabellen.

#### Graphische Abbildungen:

- Die Abbildungen umfassen die Detailzeichnung der Hauptaggregate der Maschine
- Die Aufgliederung der Abbildungen ist in „TAV. 0“ angegeben.
- Jedes Ersatzteildetail ist mit einer Positionsnummer identifiziert; die eingerahmten Positionsnummern identifizieren die empfohlenen Ersatzteildetails.

#### Tabellen:

- In den Tabellen sind die Positionsnummern, die Beschreibung, der Code des Teils aufgelistet und die Maschine Version.
- Ist dieselbe Positionsnummer mehrmals in Zusammenhang mit anderen Code angegeben, muß bei der Bestellung die Maschinennummer angegeben werden, um den Code des zu liefernden Ersatzteils ausfindig machen zu können.

Um eines oder mehrere Ersatzteile zu bestellen, anhand der „TAV.0“ die Abb. feststellen, in der das Maschinenaggregat dargestellt ist, für das das Teil bestimmt ist; anhand dieser Abb. dann das Ersatzteil und die entspr. Positionsnummer identifizieren und schließlich in den Tabellen die Positionsnummer und den entspr. Code suchen.

## ESPAÑOL

### COMO CONSULTAR EL MANUAL DE PIEZAS DE REPUESTO:

Manual Piezas de Repuesto está formado por Tablas gráficas y por Cuadros

#### Tablas gráficas

- Las tablas indican el dibujo expuesto individualmente en todos sus particulares (tridimensional) de los grupos principales de la máquina.
- La subdivisión de las tablas está identificada en la “TAV. 0”.
- Cada pieza de repuesto se identifica por un número de posición, los números de posición colocados en un recuadro identifican las piezas de repuesto aconsejadas.

#### Cuadros

- Los Cuadros indican los Números de Posición, la Descripción, el Código de la pieza y la versión de la máquina.
- En el caso de que el mismo número de posición esté indicado más de una vez, pero asociado a códigos diferentes, es necesario, en el momento del pedido, especificar la matrícula de la máquina que posee el cliente, con el fin de identificar el código de la pieza que hay que suministrar.

Al hacer el pedido de una o más piezas de repuesto, identificar en la “TAV. 0” la tabla en la que está representado el grupo máquina en donde se halla la pieza, por consiguiente identificar en la tabla la pieza y el relativo número de posición, después buscar en los cuadros el número de posición y el correspondiente código.

## COME CONSULTARE IL MANUALE HOW TO USE THIS MANUAL COMMENT UTILISER CE MANUEL NACHSCHLAGEN DES HANDBUCHS CÓMO CONSULTAR EL MANUAL

### ITALIANO

- Nella figura di pagina 10/11 individuare il gruppo funzionale dove può essere la parte desiderata e di conseguenza individuare la tavola inerenti al gruppo scelto.
- Nelle pagine seguenti procedere alla ricerca della tavola seguendo la progressione numerica.
- Cercare infine la parte desiderata e memorizzarne codice e descrizione.

### ENGLISH

- In the figure shown on page 10/11, identify the functional group which is likely to contain the part you are looking for.
- Once the title has been found, keep in mind the part number and search the illustration following the numerical sequence.
- Locate the desired spare part and keep in mind its part number and description.

### FRANÇAIS

- Dans la figure illustrée en page 10/11, repérer le groupe fonctionnel qui pourrait contenir la pièce recherchée.
- Une fois le titre repéré, mémoriser le numéro de code et procéder à la recherche de l'illustration en suivant la progression des codes.
- Chercher la pièce souhaitée et en mémoriser le code et la désignation.

### DEUTSCH

- In der Abbildung auf Seite 10/11 die Funktionsbaugruppe, in der sich das gewünschte Teil befinden kann, und somit die Tafel der entsprechenden Baugruppe feststellen
- Auf den Folgeseiten die Tafel anhand der laufenden Nummerierung ausfindig machen
- Schließlich das gewünschte Teil suchen und die zugehörige Teilenummer und Beschreibung notieren.

### ESPAÑOL

- En la figura en la página 10/11 halle el grupo funcional donde puede encontrarse la pieza deseada.
- Una vez hallado el título, tome nota del número de código y proceda con la búsqueda de la tabla según la progresión numérica.
- Al final, halle la pieza deseada y memorice su código y descripción.





**INDICE DEI GRUPPI FUNZIONALI DELLA MACCHINA  
INDEX OF MACHINE GROUPS AND ASSEMBLIES  
INDEX DES GROUPES FONCTIONNELS DE LA MACHINE  
VERZEICHNIS DER FUNKTIONSBAUGRUPPEN DER MASCHINE  
INDICE DE LOS GRUPOS FUNCIONALES DE LA MAQUINA**



**CARPIGIANI**

---

GRUPPI FUNZIONALI  
FUNCTIONAL GROUPS  
GROUPES FONCTIONNELS  
FUNKTIONSBAUGRUPPEN  
GRUPOS FUNCIONALES

NUMERO TAVOLA  
TABLE NUMBER  
NUMÉRO DE TABLE  
TAFEL NR.  
NÚMERO DE TABLA

**00/A**

REVISIONE  
REVISION  
VÉRIFIER  
REVISION  
REVISIÓN

**01**

**01** CARROZZERIE  
COACHWORK  
CARROSSERIE  
KAROSSERIEN  
CARROCERÍAS

**10** CASSETTA ELETTRICA  
ELECTRICAL BOX  
BOÎTE ÉLECTRIQUE  
ELEKTRISCHE BOX  
CAJA ELÉCTRICA

**02** AGITAZIONE CAMERA SHAKE  
SHAKE CHAMBER BEATING  
AGITATION CHAMBRE SHAKE  
RÜHRWERK SHAKE- KAMMER  
AGITACIÓN CÁMARA SHAKE

**12** IMPIANTO FRIGORIFERO  
PLANT REFRIGERATOR  
USINE DE REFRIGERATEUR  
PLANT KÜHLSCHRANK  
PLANTA REFRIGERADOR

**11** EROGATORI SCIROPPI  
SYRUP DISPENSERS  
DISTRIBUTEURS SIROPS  
SIRUPABGABEN  
EROGADORES JARABES

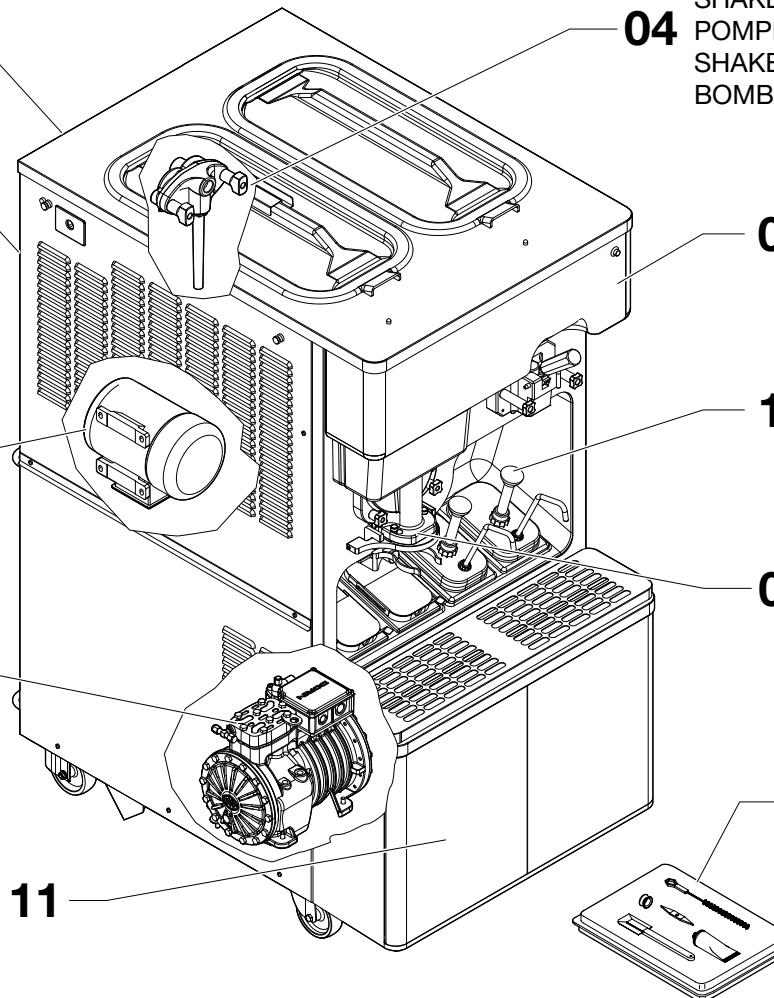
**04** POMPA SHAKE  
SHAKE PUMP  
POMPE SHAKE  
SHAKE- PUMPE  
BOMBA SHAKE

**09** DECALCOMANIE  
DECALS  
DECALCOMANIES  
ABZIEHBILDER  
CALCOMANÍAS

**14** POMPA PER TOPPING  
TOPPING PUMP  
POMPE POUR TOPPING  
TOPPING- PUMPE  
BOMBA PARA TOPPING

**08** SENSORI  
SENSORS  
CAPTEURS  
SENSOREN  
SENSORES

**15** ACCESSORI A CORREDO  
ACCESSORIES KIT  
ACCESSOIRES D'ACCOMPAGNEMENT  
MITGELIEFERTES ZUBEHÖR  
ACCESORIOS DE ACOMPAÑAMIENTO



GRUPPI FUNZIONALI  
FUNCTIONAL GROUPS  
GROUPES FONCTIONNELS  
FUNKTIONSBAUGRUPPEN  
GRUPOS FUNCIONALES

NUMERO TAVOLA  
TABLE NUMBER  
NUMÉRO DE TABLE  
TAFEL NR.  
NÚMERO DE TABLA

REVISIONE  
REVISION  
VÉRIFIER  
REVISION  
REVISIÓN

**00/B**

**01**

AGITAZIONE VASCA SHAKE  
SHAKE TANK BEATING  
AGITATION CUVE SHAKE  
RÜHRWERK SHAKE- BEHÄLTER  
AGITACIÓN CUBA SHAKE

**03**

POMPA SOFT  
SOFT PUMP  
POMPE SOFT  
SOFT- PUMPE  
BOMBA SOFT

**07**

AGITAZIONE VASCA SOFT  
SOFT TANK BEATING  
AGITATION CUVE SOFT  
RÜHRWERK SOFT- BEHÄLTER  
AGITACIÓN CUBA SOFT

**06**

PORTA TOPPING  
TOPPING CONTAINER  
PORTE-TOPPING  
TOPPING- HALTER  
PUERTA TOPPING

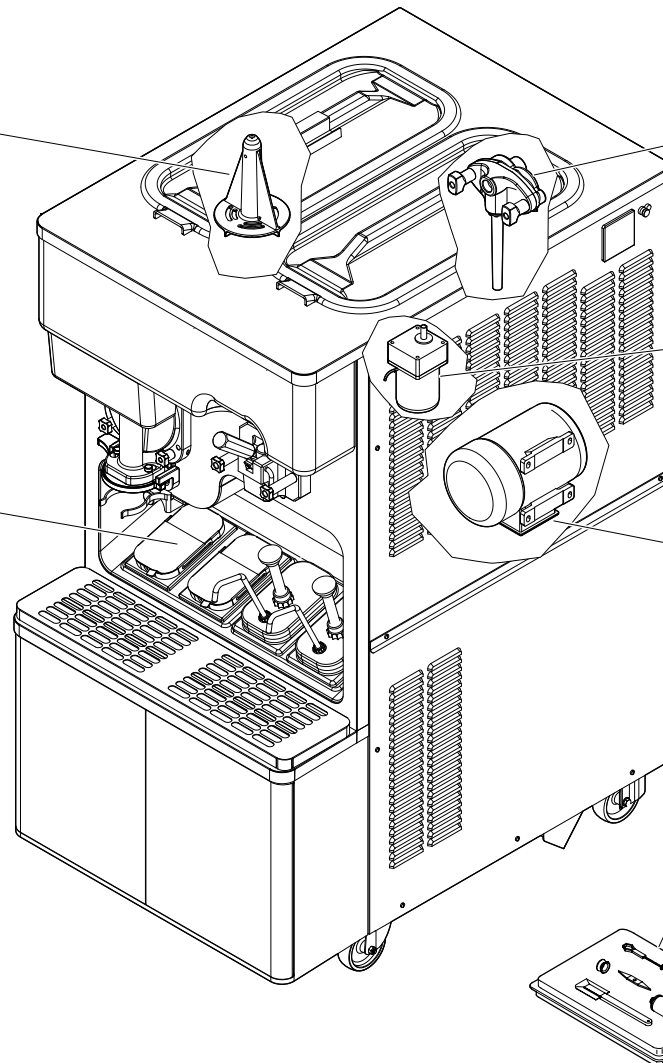
**13**

AGITAZIONE CAMERA SOFT  
SOFT CHAMBER BEATING  
AGITATION CHAMBRE SOFT  
RÜHRWERK SOFT- KAMMER  
AGITACIÓN CÁMARA SOFT

**05**

KIT ACCESSORI A CORREDO  
ACCESSORIES KIT PROVIDED  
KIT ACCESSOIRES FOURNI EN DOTATION  
MITGELIEFERTER ZUBEHÖRSATZ  
KIT ACCESORIOS EN DOTACIÓN

**16**





**TAVOLE RICAMBI  
SPARE PARTS TABLES  
TABLEAU DES PIECES DE RECHANGE  
ERSATZTEIL-ÜBERSICHTEN  
TABLAS Y RECAMBIOS**



**CARPIGIANI**

---

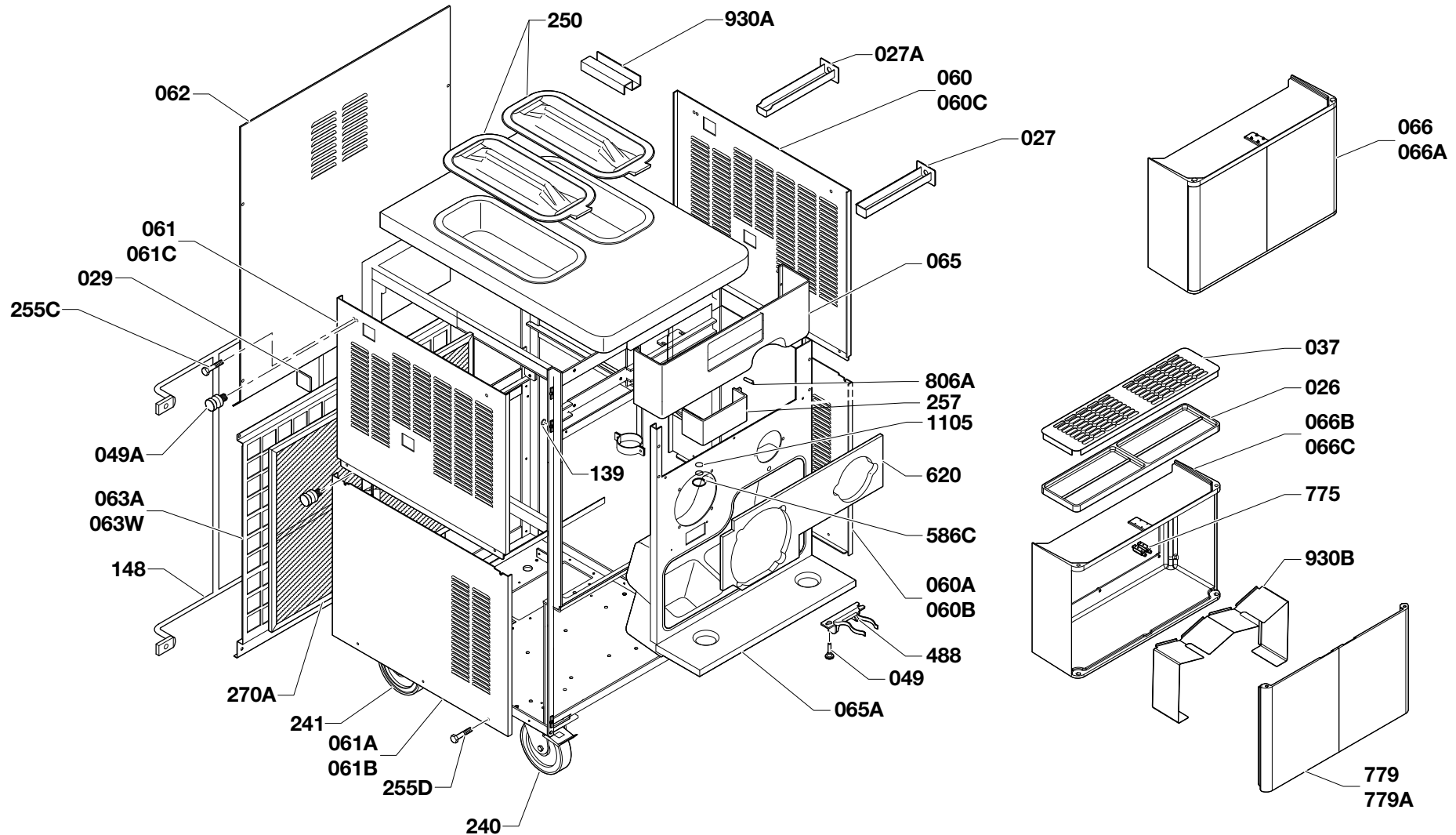
CARROZZERIE  
BODYWORK  
CARROSSERIE  
GEHÄUSE  
CARROCEIRÍAS

NUMERO TAVOLA  
TABLE NUMBER  
NUMÉRO DE TABLE  
TAFEL NR.  
NÚMERO DE TABLA

**01**

REVISIONE  
REVISION  
VÉRIFIER  
REVISION  
REVISIÓN

**01**



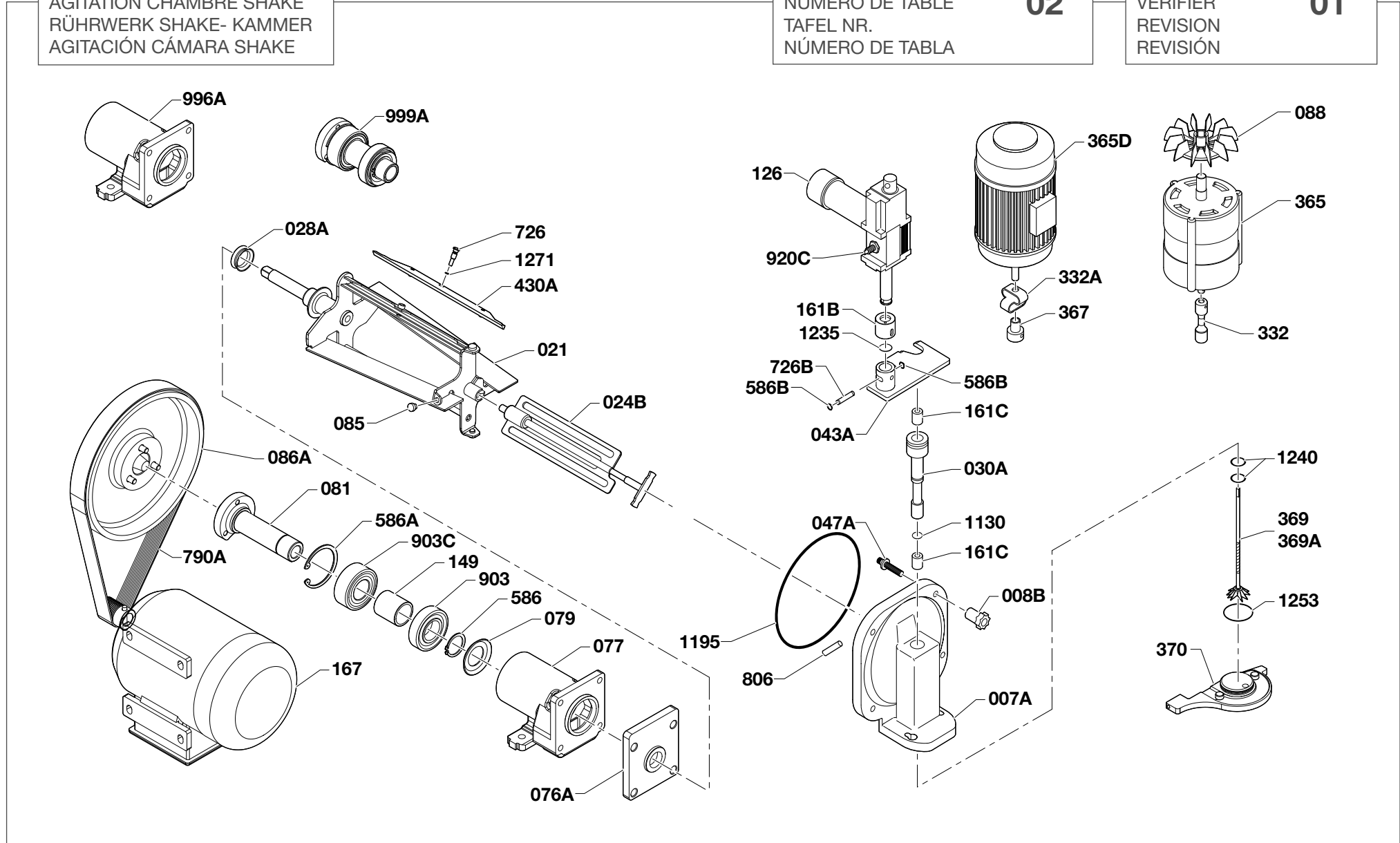
AGITAZIONE CAMERA SHAKE  
SHAKE CHAMBER BEATING  
AGITATION CHAMBRE SHAKE  
RÜHRWERK SHAKE- KAMMER  
AGITACIÓN CÁMARA SHAKE

NUMERO TAVOLA  
TABLE NUMBER  
NUMÉRO DE TABLE  
TAFEL NR.  
NÚMERO DE TABLA

REVISIONE  
REVISION  
VÉRIFIER  
REVISION  
REVISIÓN

**02**

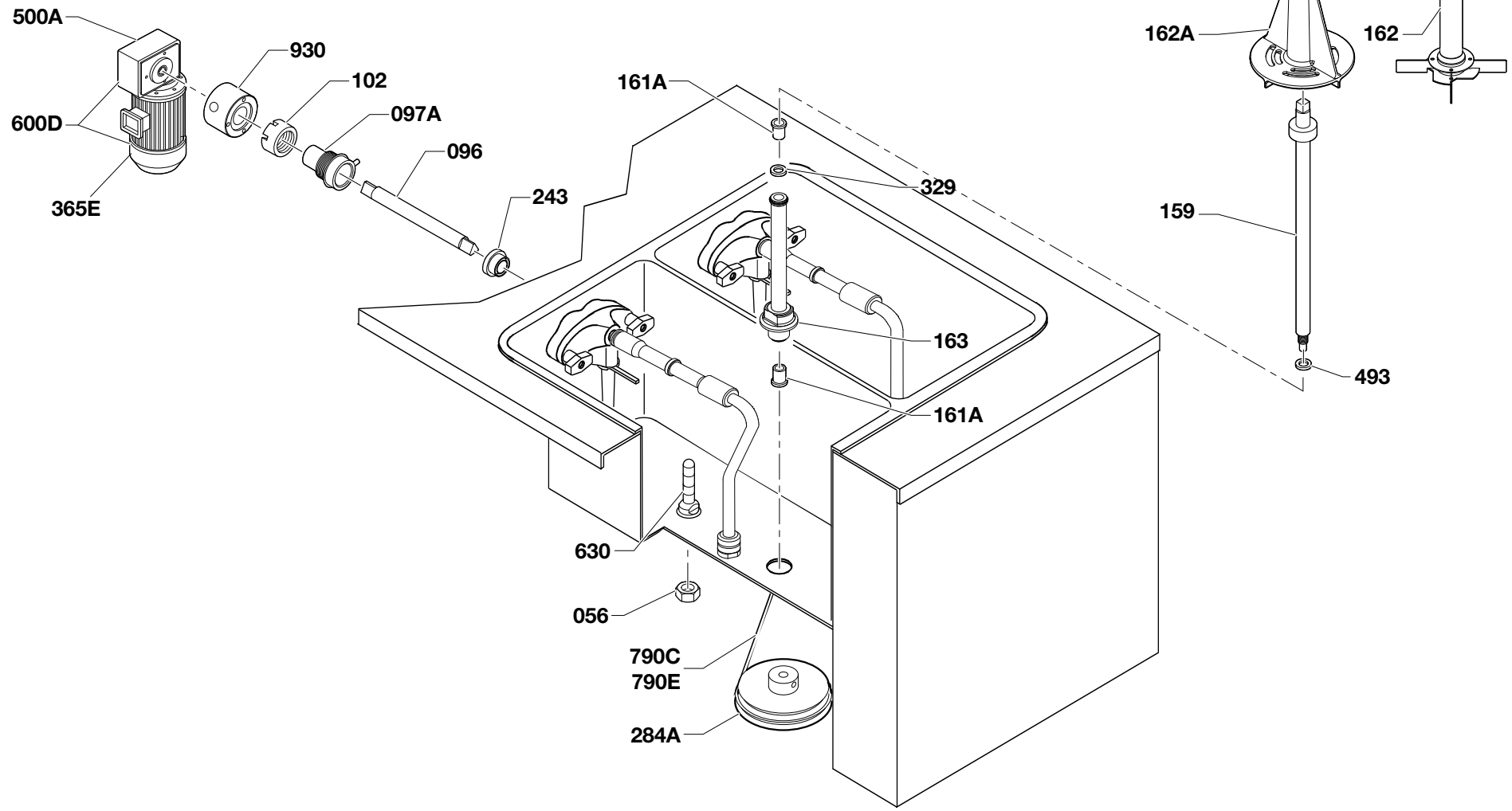
**01**



AGITAZIONE VASCA SHAKE  
 SHAKE TANK BEATING  
 AGITATION CUVE SHAKE  
 RÜHRWERK SHAKE- BEHÄLTER  
 AGITACIÓN CUBA SHAKE

NUMERO TAVOLA  
 TABLE NUMBER  
 NUMÉRO DE TABLE  
 TAFEL NR.  
 NÚMERO DE TABLA **03**

REVISIONE  
 REVISION  
 VÉRIFIER  
 REVISION  
 REVISIÓN **01**





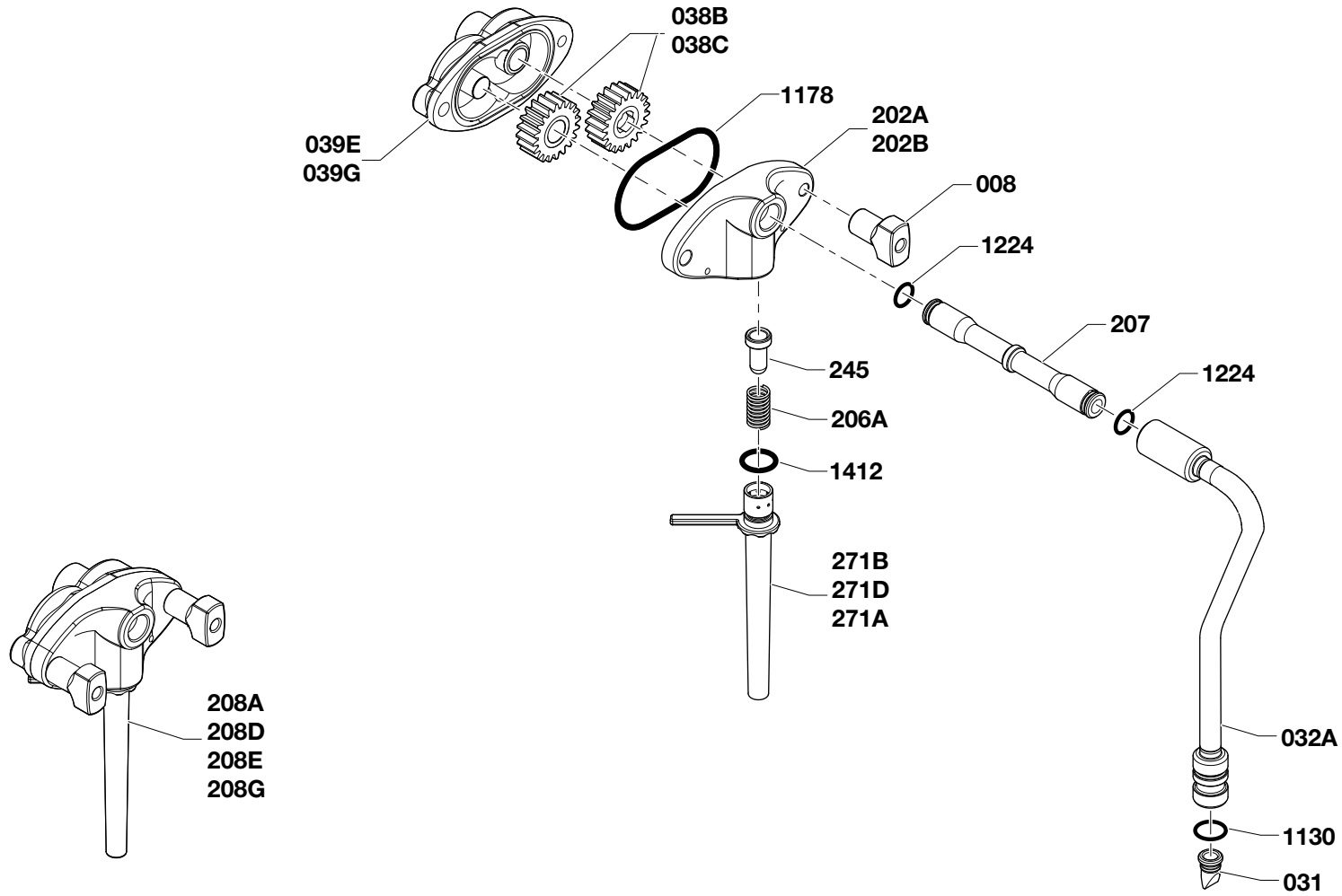
POMPA SHAKE  
SHAKE PUMP  
POMPE SHAKE  
SHAKE- PUMPE  
BOMBA SHAKE

NUMERO TAVOLA  
TABLE NUMBER  
NUMÉRO DE TABLE  
TAFEL NR.  
NÚMERO DE TABLA

**04**

REVISIONE  
REVISION  
VÉRIFIER  
REVISION  
REVISIÓN

**01**



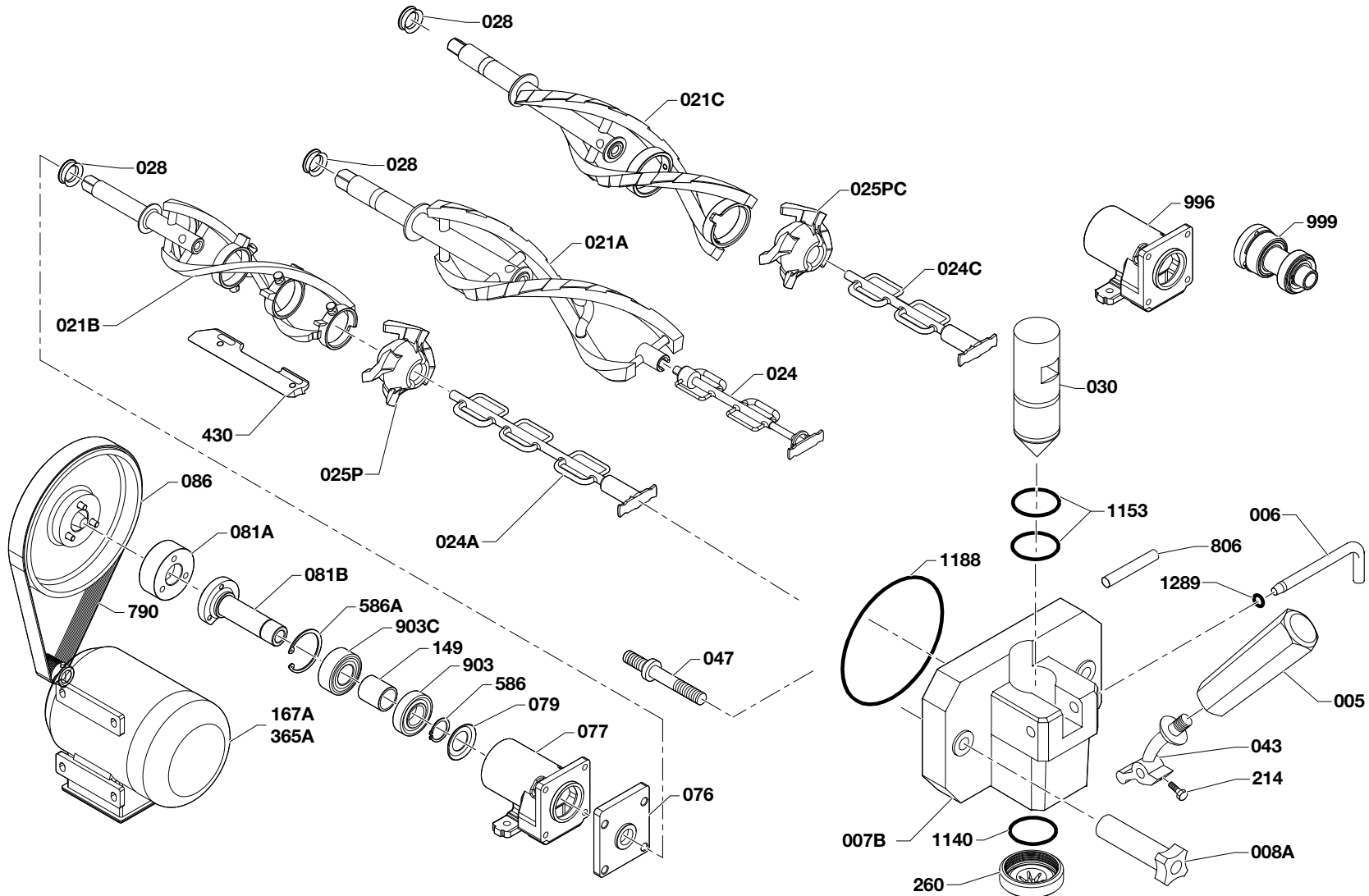
AGITAZIONE CAMERA SOFT  
SOFT CHAMBER BEATING  
AGITATION CHAMBRE SOFT  
RÜHRWERK SOFT- KAMMER  
AGITACIÓN CÁMARA SOFT

NUMERO TAVOLA  
TABLE NUMBER  
NUMÉRO DE TABLE  
TAFEL NR.  
NÚMERO DE TABLA

**05**

REVISIONE  
REVISION  
VÉRIFIER  
REVISION  
REVISIÓN

**01**



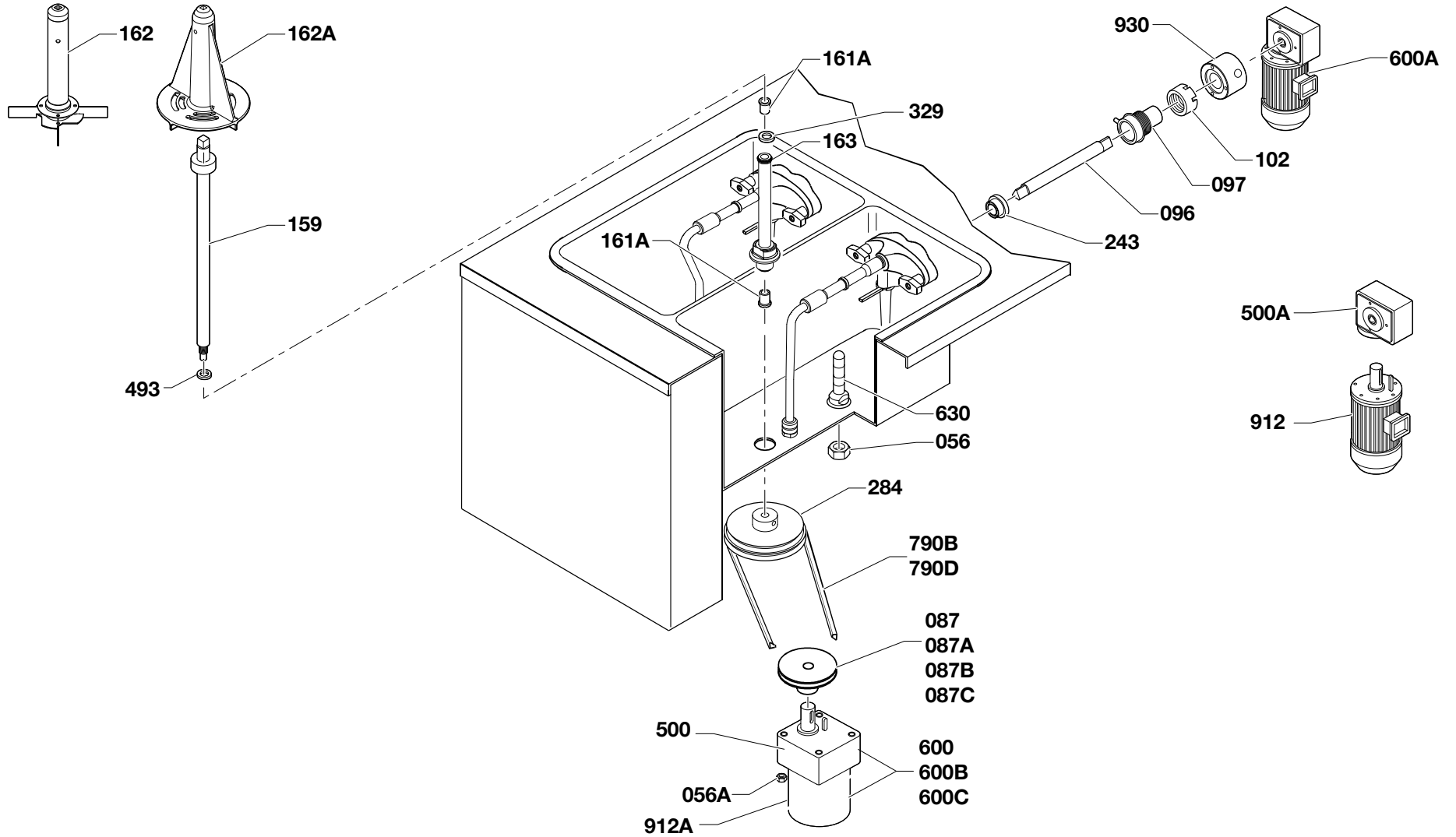
AGITAZIONE VASCA SOFT  
SOFT TANK BEATING  
AGITATION CUVE SOFT  
RÜHRWERK SOFT-BEHÄLTER  
AGITACIÓN CUBA SOFT

NUMERO TAVOLA  
TABLE NUMBER  
NUMÉRO DE TABLE  
TAFEL NR.  
NÚMERO DE TABLA

**06**

REVISIONE  
REVISION  
VÉRIFIER  
REVISION  
REVISIÓN

**01**



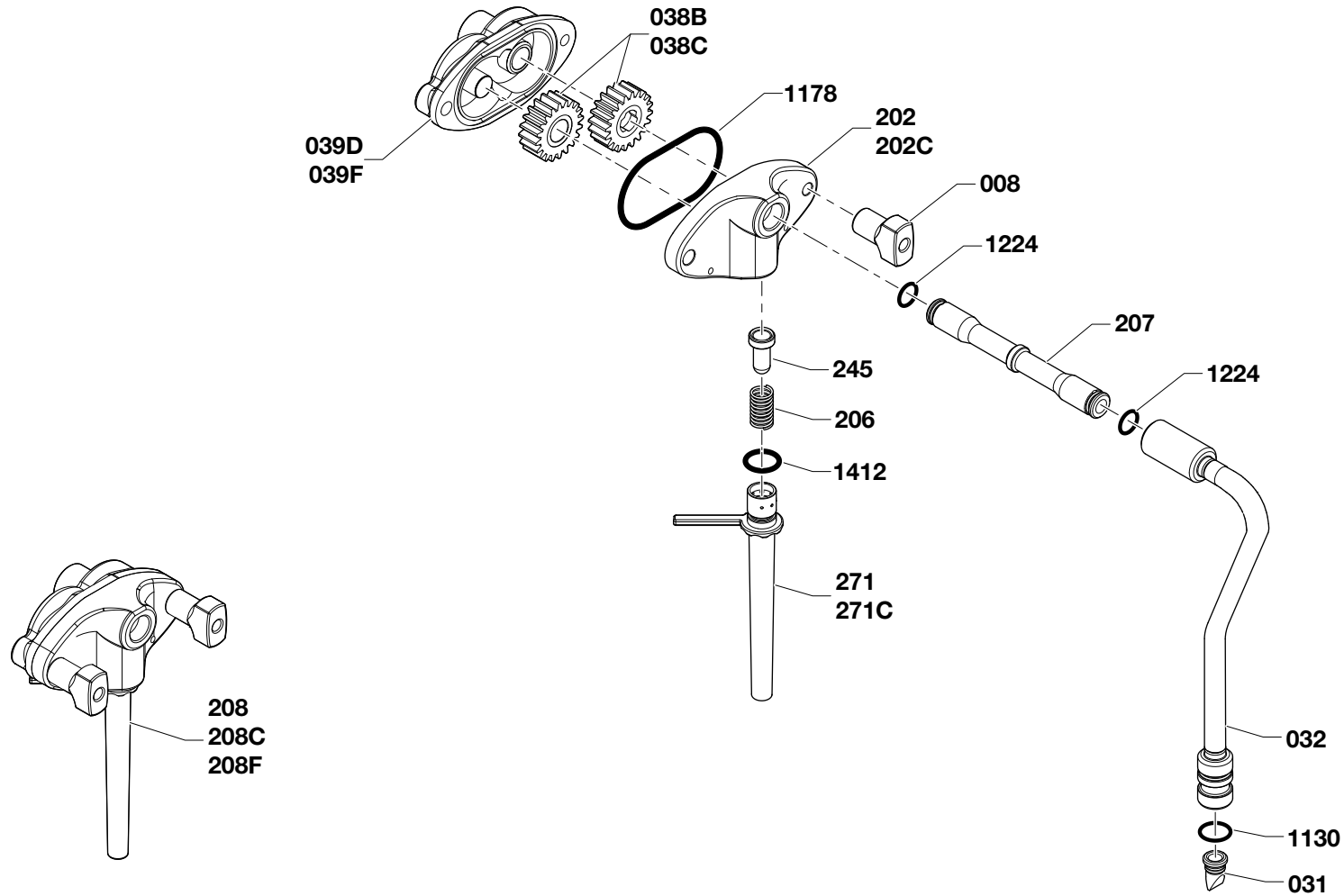
POMPA SOFT  
SOFT PUMP  
POMPE SOFT  
SOFT- PUMPE  
BOMBA SOFT

NUMERO TAVOLA  
TABLE NUMBER  
NUMÉRO DE TABLE  
TAFEL NR.  
NÚMERO DE TABLA

**07**

REVISIONE  
REVISION  
VÉRIFIER  
REVISION  
REVISIÓN

**01**



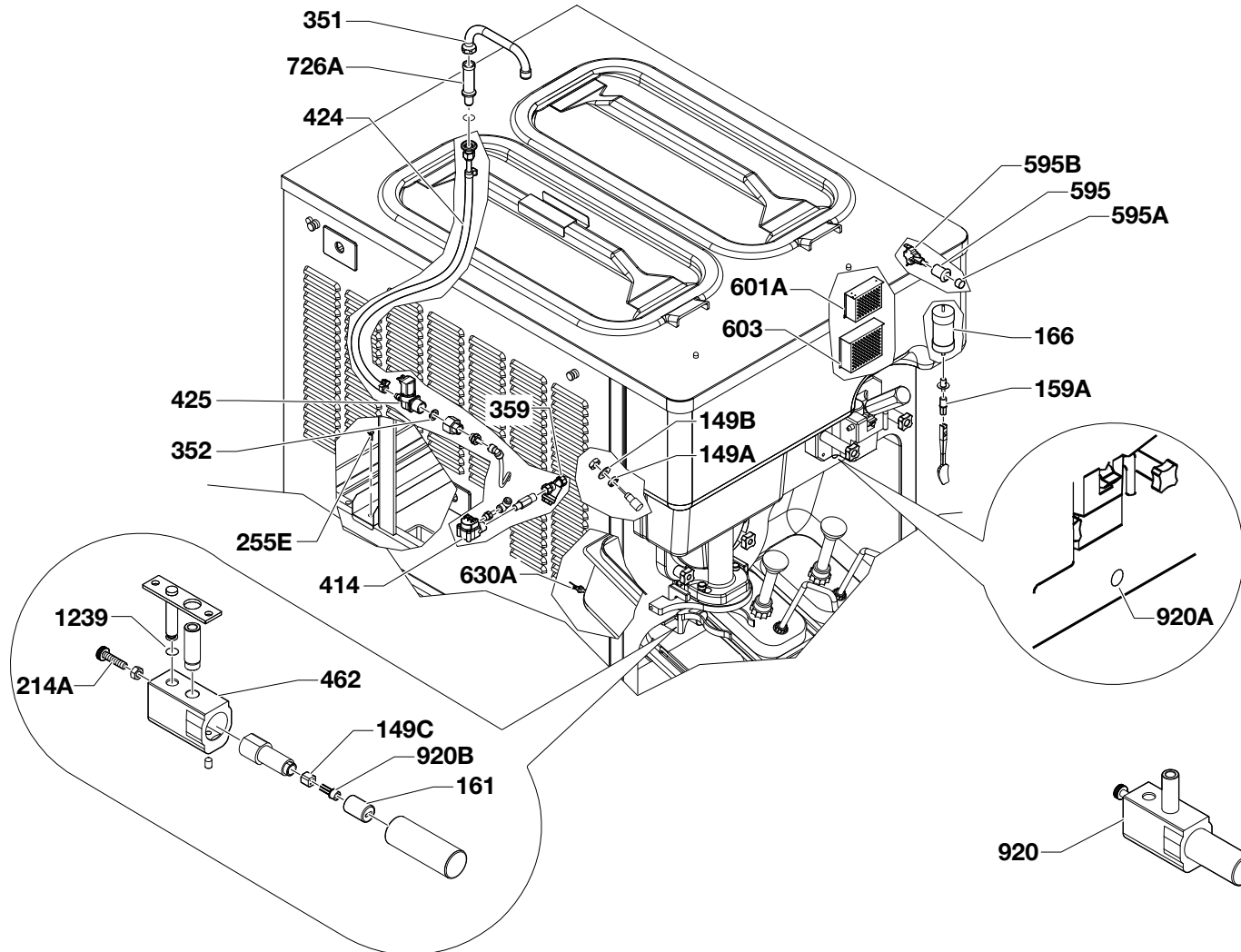
SENSORI  
SENSORS  
CAPTEURS  
SENSOREN  
SENSORES

NUMERO TAVOLA  
TABLE NUMBER  
NUMÉRO DE TABLE  
TAFEL NR.  
NÚMERO DE TABLA

**08**

REVISIONE  
REVISION  
VÉRIFIER  
REVISION  
REVISIÓN

**01**



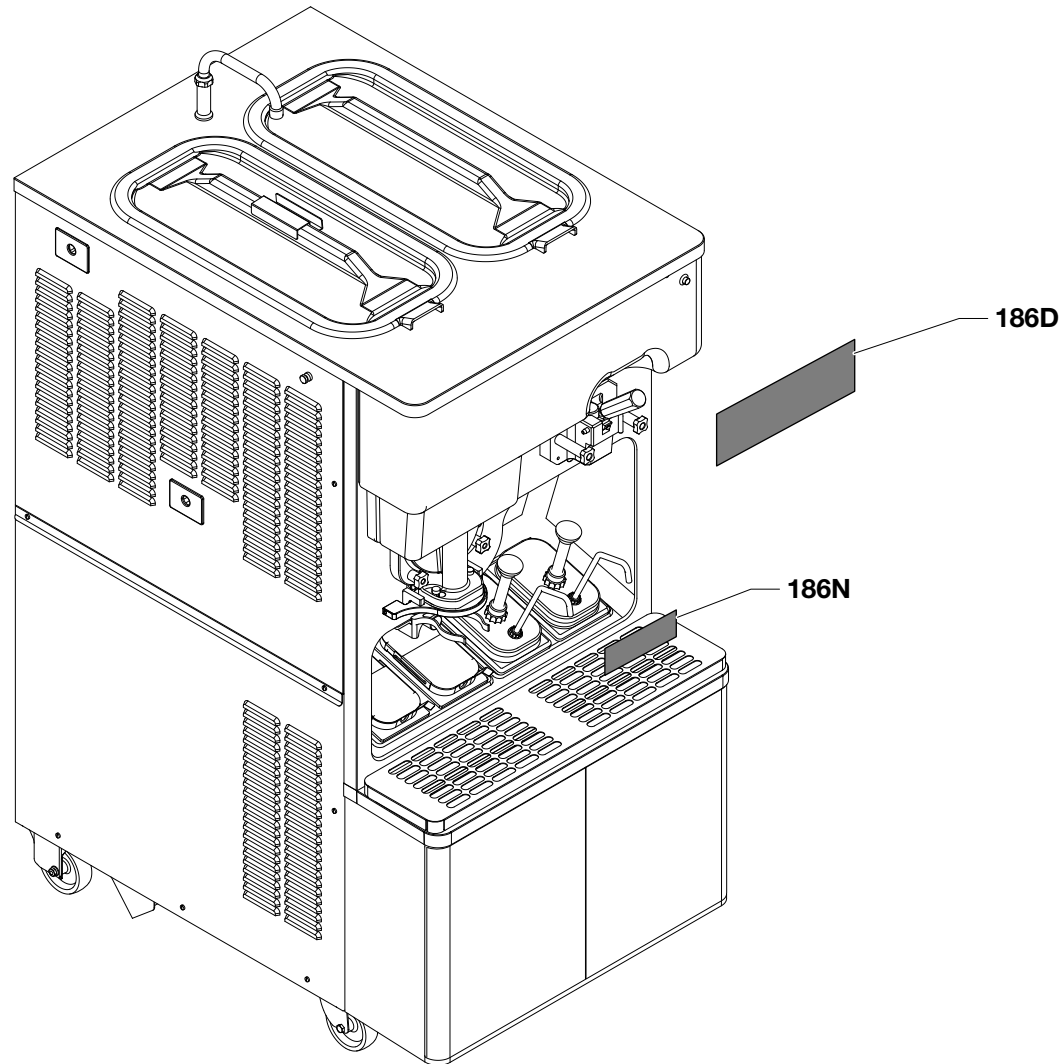
DECALCOMANIE  
DECALS  
DECALCOMANIES  
ABZIEHBILDER  
CALCOMANÍAS

NUMERO TAVOLA  
TABLE NUMBER  
NUMÉRO DE TABLE  
TAFEL NR.  
NÚMERO DE TABLA

**09**

REVISIONE  
REVISION  
VÉRIFIER  
REVISION  
REVISIÓN

**01**



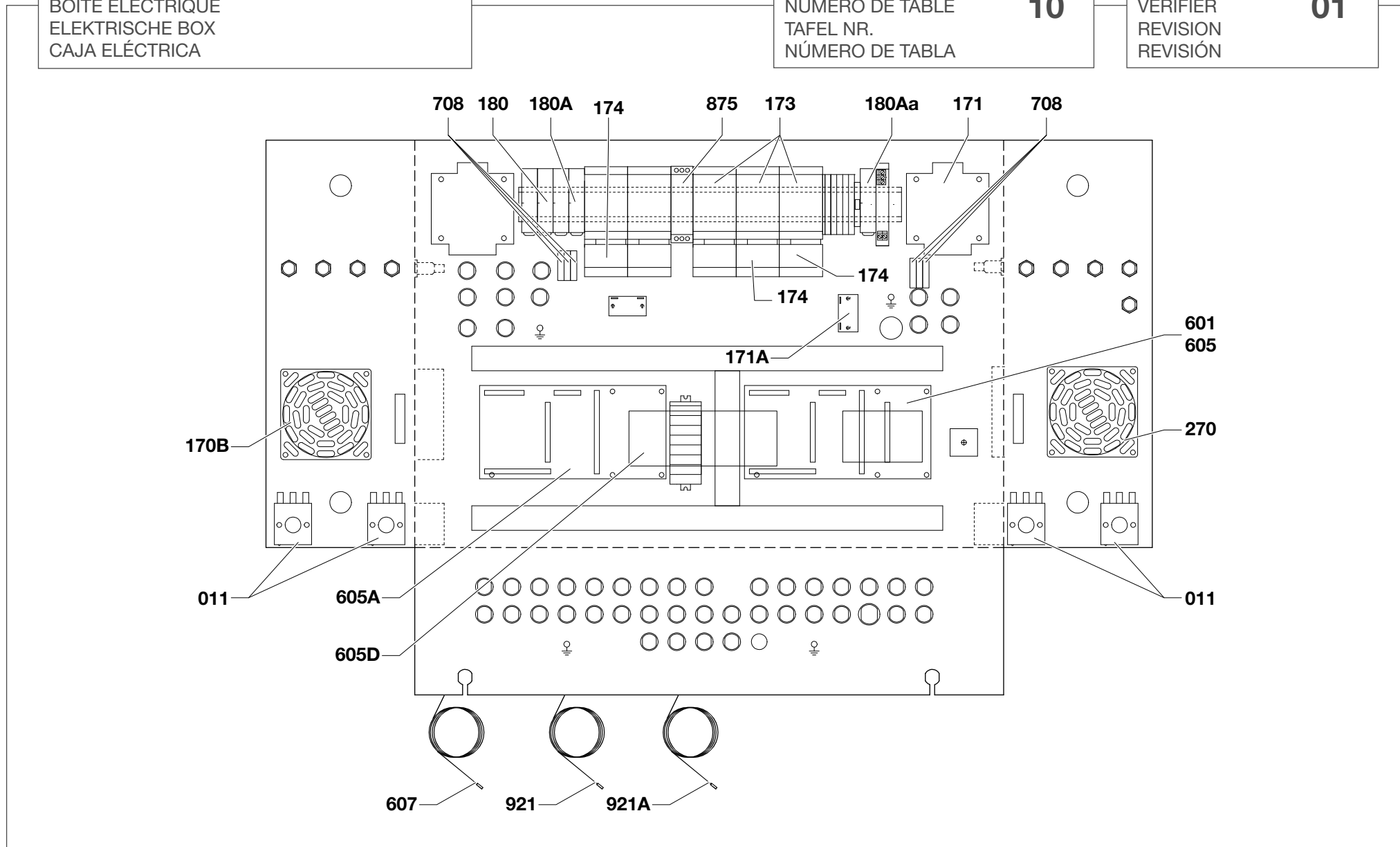
CASSETTA ELETTRICA  
ELECTRICAL BOX  
BOÎTE ÉLECTRIQUE  
ELEKTRISCHE BOX  
CAJA ELÉCTRICA

NUMERO TAVOLA  
TABLE NUMBER  
NUMÉRO DE TABLE  
TAFEL NR.  
NÚMERO DE TABLA

**10**

REVISIONE  
REVISION  
VÉRIFIER  
REVISION  
REVISIÓN

**01**



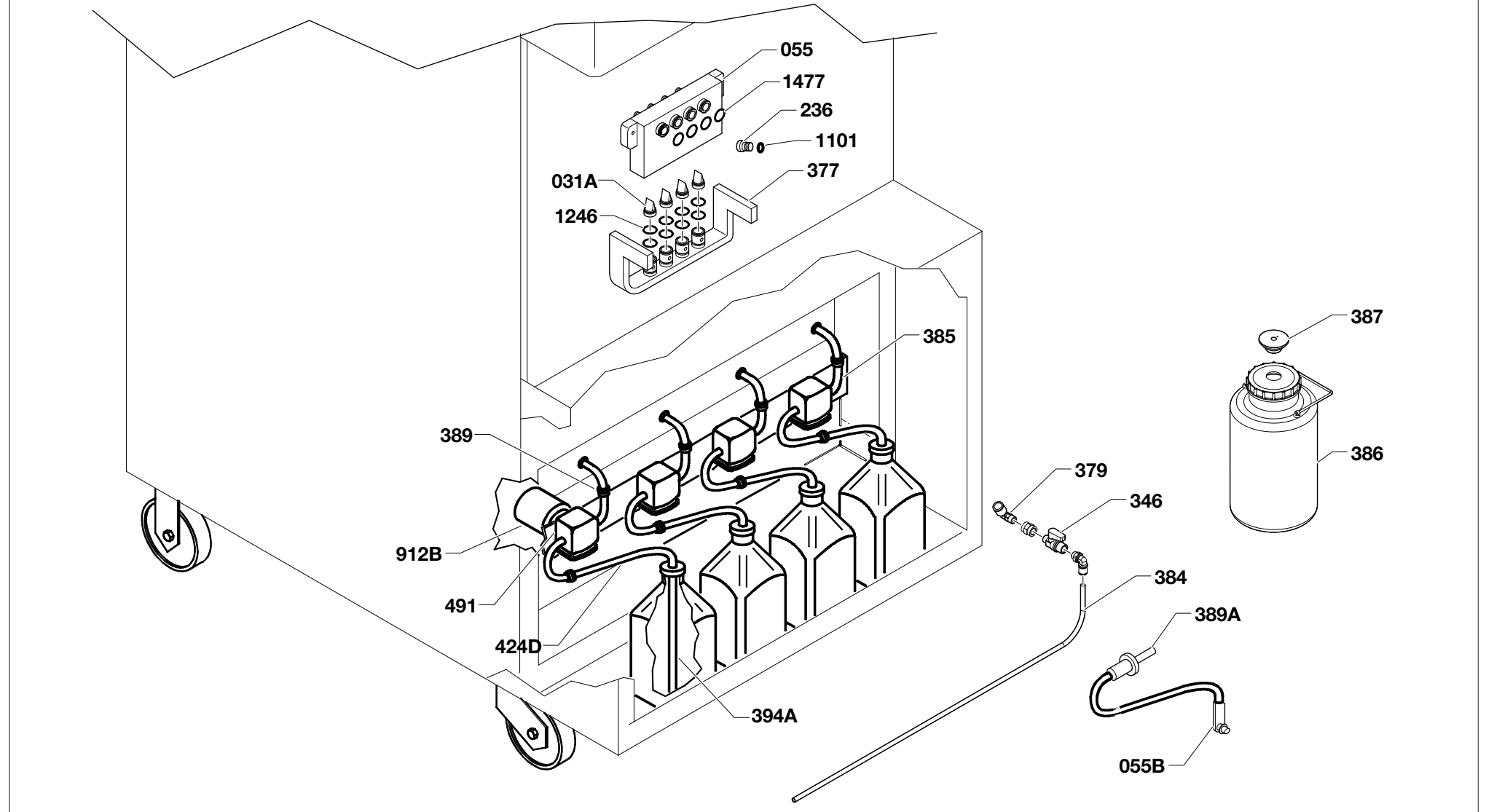
EROGATORI SCIROPPI  
SYRUP DISPENSERS  
DISTRIBUTEURS SIROPS  
SIRUPABGABEN  
EROGADORES JARABES

NUMERO TAVOLA  
TABLE NUMBER  
NUMÉRO DE TABLE  
TAFEL NR.  
NÚMERO DE TABLA

**11**

REVISIONE  
REVISION  
VÉRIFIER  
REVISION  
REVISIÓN

**01**





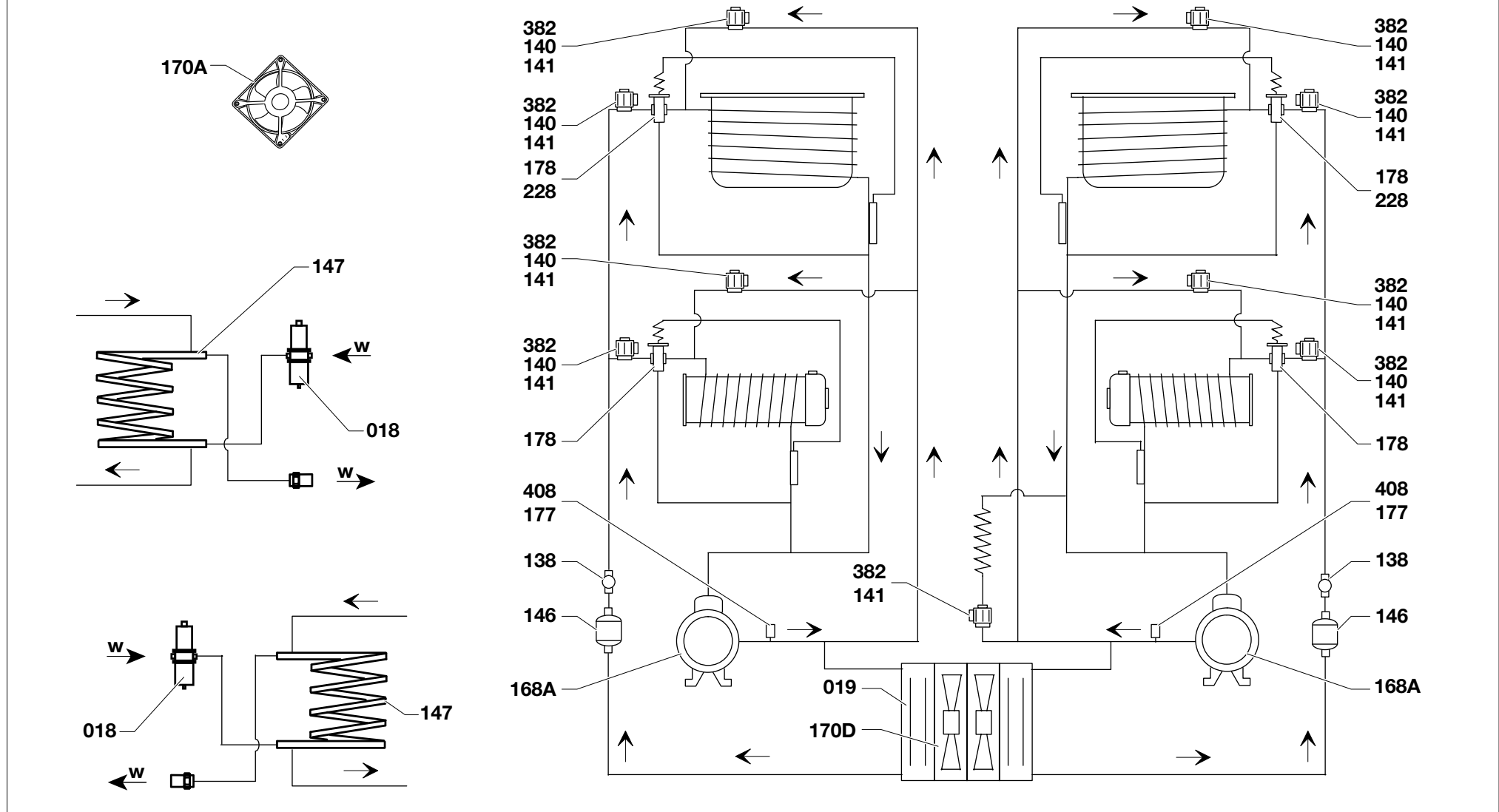
IMPIANTO FRIGORIFERO  
REFRIGERATING SYSTEM  
REFRIGERATEUR  
KÜHLANLAGE  
PLANTA REFRIGERADOR

NUMERO TAVOLA  
TABLE NUMBER  
NUMÉRO DE TABLE  
TAFEL NR.  
NÚMERO DE TABLA

**12**

REVISIONE  
REVISION  
VÉRIFIER  
REVISION  
REVISIÓN

**01**



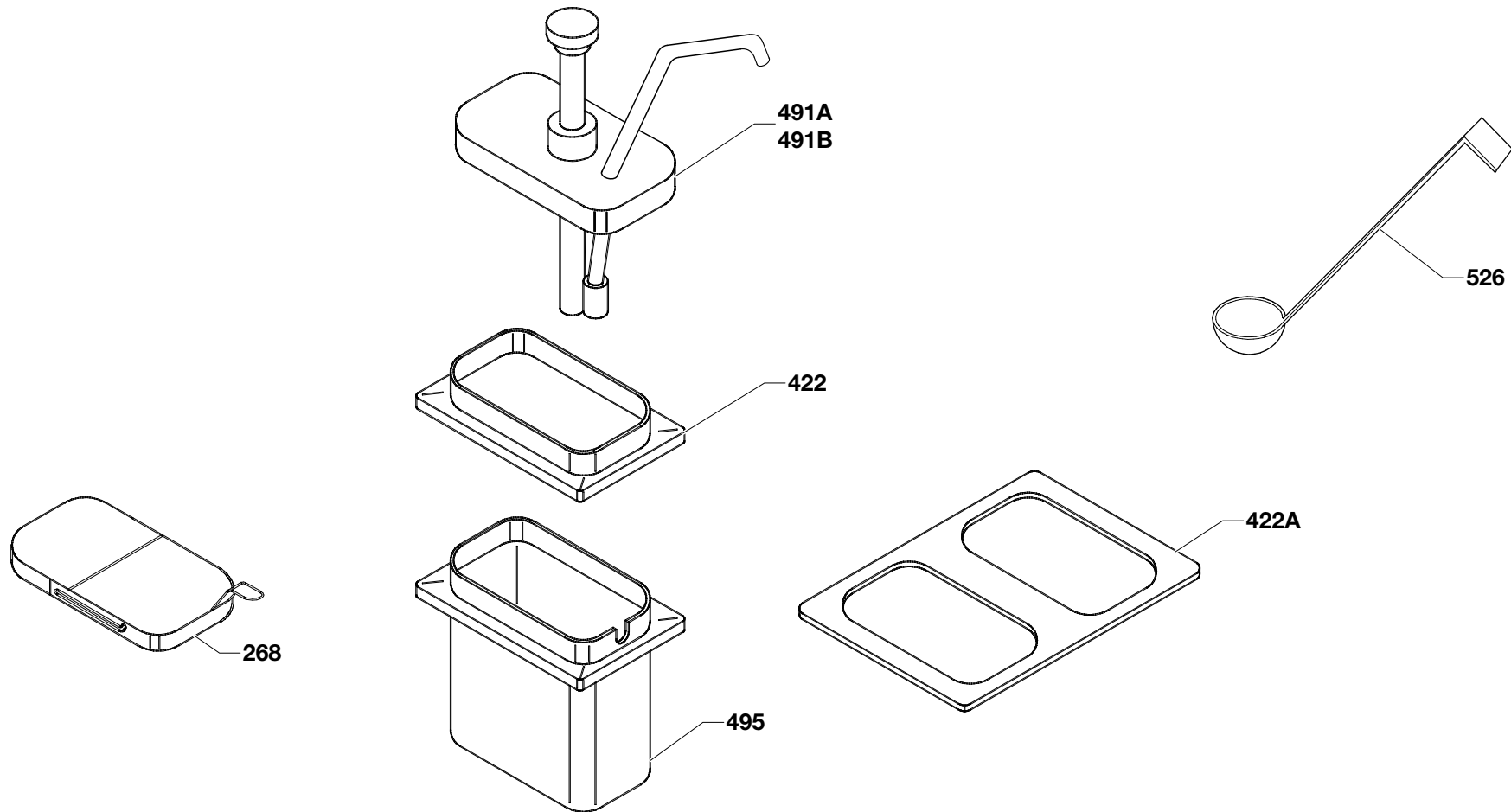
PORTA TOPPING  
TOPPING CONTAINER  
PORTE-TOPPING  
TOPPING- HALTER  
PUERTA TOPPING

NUMERO TAVOLA  
TABLE NUMBER  
NUMÉRO DE TABLE  
TAFEL NR.  
NÚMERO DE TABLA

**13**

REVISIONE  
REVISION  
VÉRIFIER  
REVISION  
REVISIÓN

**01**



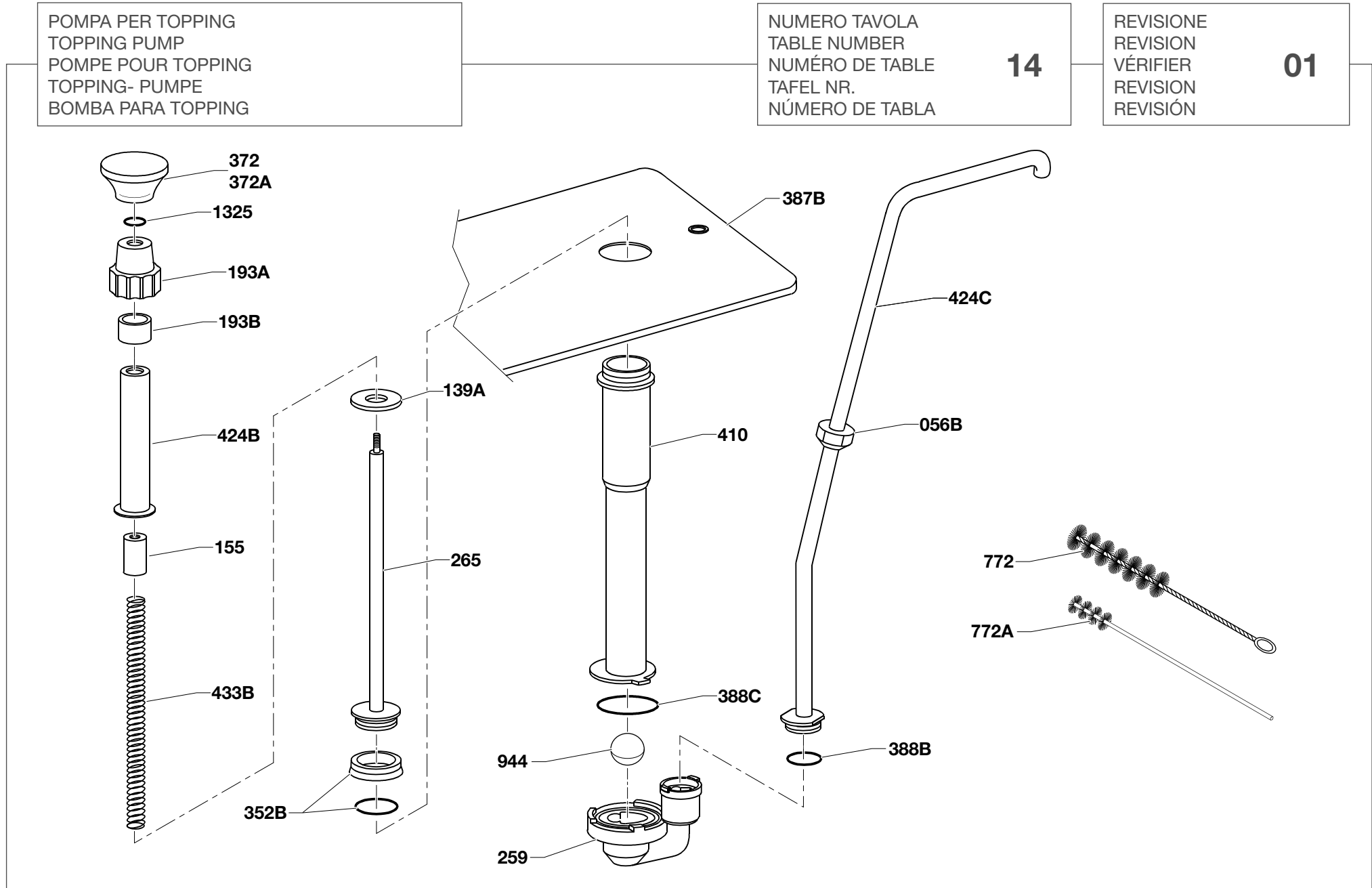
POMPA PER TOPPING  
TOPPING PUMP  
POMPE POUR TOPPING  
TOPPING- PUMPE  
BOMBA PARA TOPPING

NUMERO TAVOLA  
TABLE NUMBER  
NUMÉRO DE TABLE  
TAFEL NR.  
NÚMERO DE TABLA

**14**

REVISIONE  
REVISION  
VÉRIFIER  
REVISION  
REVISIÓN

**01**



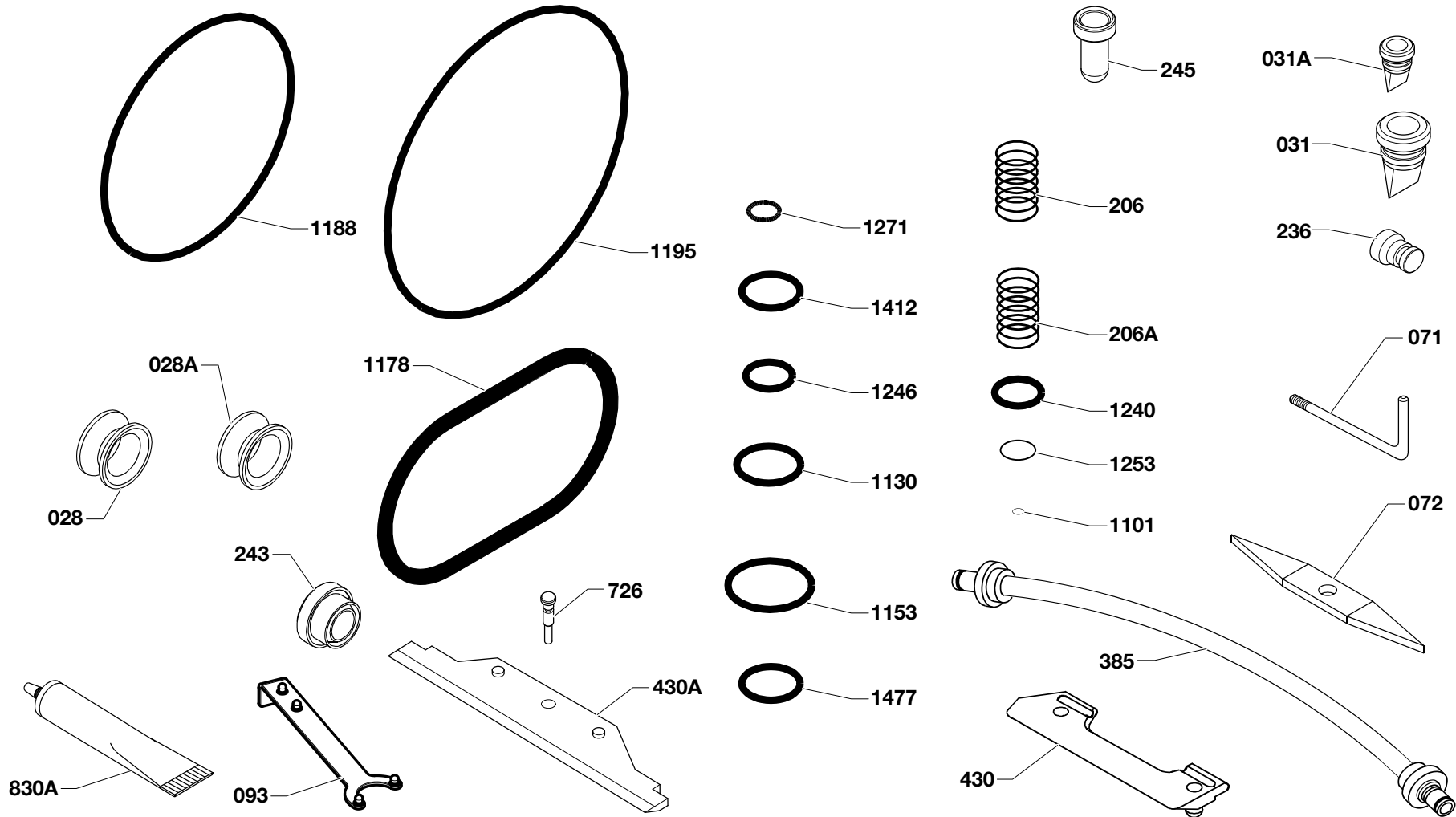
ACCESSORI A CORREDO  
ACCESSORIES KIT  
ACCESSOIRES D'ACCOMPAGNEMENT  
ZUBEHÖR FLANKIERENDE  
ACCESORIOS DE ACOMPAÑAMIENTO

NUMERO TAVOLA  
TABLE NUMBER  
NUMÉRO DE TABLE  
TAFEL NR.  
NÚMERO DE TABLA

**15**

REVISIONE  
REVISION  
VÉRIFIER  
REVISION  
REVISIÓN

**01**



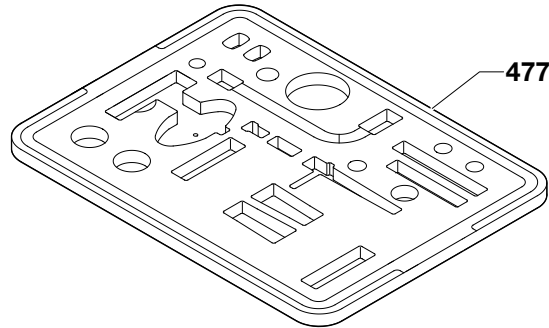
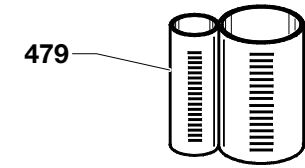
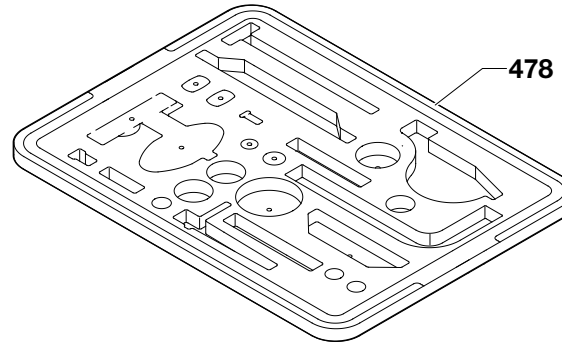
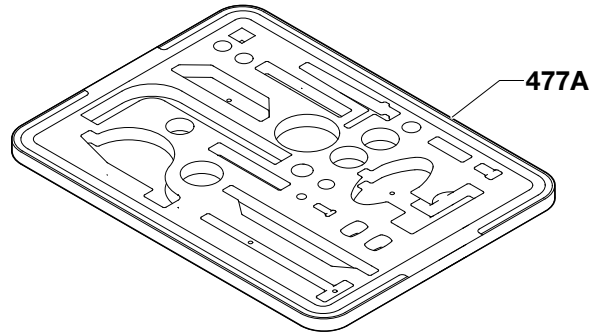
KIT ACCESSORI A CORREDO  
ACCESSORIES KIT PROVIDED  
KIT ACCESSOIRES FOURNI EN DOTATION  
MITGELIEFERTER ZUBEHÖRSATZ  
KIT ACCESORIOS EN DOTACIÓN

NUMERO TAVOLA  
TABLE NUMBER  
NUMÉRO DE TABLE  
TAFEL NR.  
NÚMERO DE TABLA

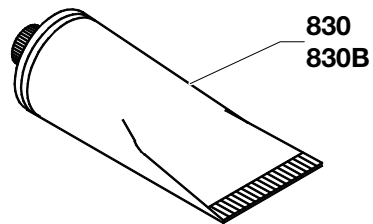
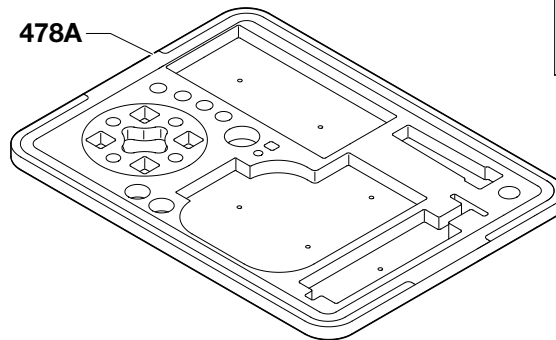
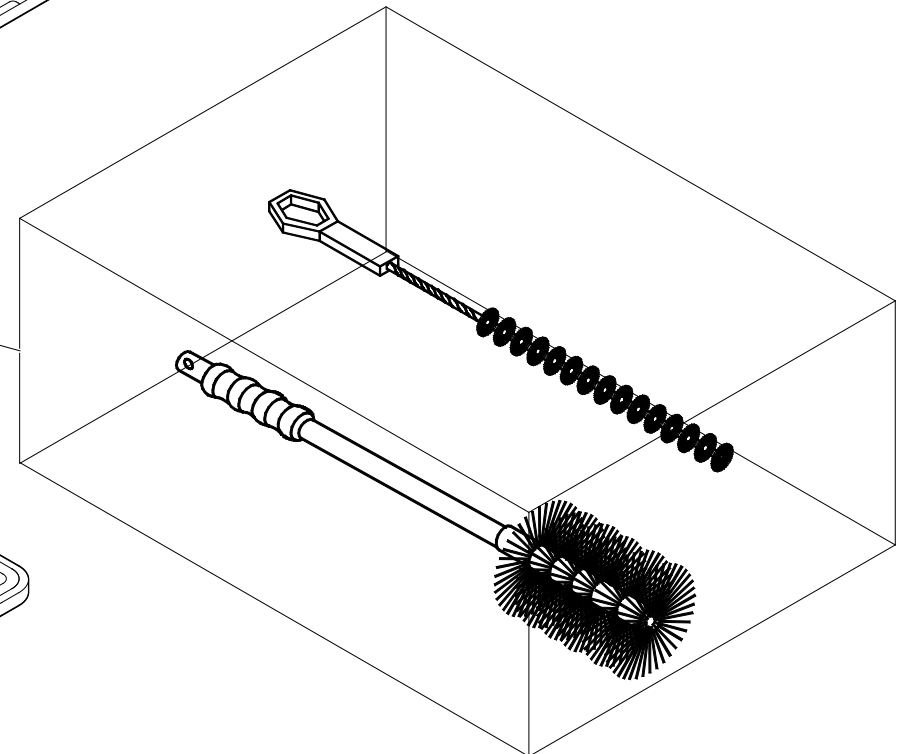
**16**

REVISIONE  
REVISION  
VÉRIFIER  
REVISION  
REVISIÓN

**01**



772C



POS	CODE	IT	EN	DE	FR	ES
005	IC118164050	MANIGLIA RUBINETTO COMPLETA BIANCA	ASSEMBLY HANDLE LID FRONT WHITE	GRIFF HAHN KOMPL. WEIß	POIGNEE ROBINET COMPLETE BLANC	LEVA GRIFO BLANCA 121 BIB
006	IC155163340	PERNO RUBINETTO	PIN-TAP	STIFT HAHN	BROCHE ROBINET	PERNO GRIFO
007A	IC118098200	PORTELLO	HEAD DISPENSE	FRONTTÜR	PORTILLON	PUERTA
007B	IC118103060	CORPO PORTELLO BIANCO STP.11534	BODY HEAD DISPENSE	TÜRKORPER	CORPS PORTILLON	CUERPO PUERTA
007B	IC118103090	CORPO PORTELLO BIANCO STP.11534	BODY HEAD DISPENSE	TÜRKORPER	CORPS PORTILLON	CUERPO PUERTA
008	IC173100210	POMELLO POMPA	KNOB HAND-PUMP	GRIFFKNOPF PUMPE	POMMEAU POMPE	POMO BOMBA
008A	IC173105340	POMELLO LUNGO BIANCO	KNOB HAND-LONG	HANDGRIFF LANG	POMMEAU LONG	POMO LARGO BLANCO
008B	IC173105450	POMELLO CORTO BIANCO	KNOB HAND-SHORT WHITE	HANDGRIFF KURZ WEIß	POMMEAU COURT BLANC	POMO CORTO BLANCO
011	IC582100166	TERMOSTATO IMIT TR2 TARAT.75°C	THERMOSTAT IMIT TR2 TARAT.75°C	THERMOSTAT IMIT TR2 TARAT.75°C	THERMOSTAT IMIT TR2 TARAT.75°C	TERMOSTATO IMIT TR2 TARAT.75°C
011	IC582100166	TERMOSTATO IMIT LS1 541662 TARAT.85°C	THERMOSTAT IMIT LS1 541662 TARAT.85°C	THERMOSTAT IMIT LS1 541662 TARAT.85°C	THERMOSTAT IMIT LS1 541662 TARAT.85°C	TERMOSTATO IMIT LS1 541662 TARAT.85°C
018	IC581800119	VALVOLA ACQUA 3/8" DANFOSS WVO10 003N6212	VALVE-WATER 3/8" DANFOSS WVO10 003N6212	WASSERVENTIL3/8" DANFOSS WVO10 003N6212	SOUPAPE A EAU3/8" DANFOSS WVO10 003N6212	VALVULA AGUA3/8" DANFOSS WVO10 003N6212
019	IC131163170	CONDENSATORE ARIA LUVATA D89564	CONDENSER AIR LUVATA D89564	LUFTKONDENSATOR LUVATA D89564	CONDENSEUR A AIR+IC551 000 018	CONDENSADOR AIRE LUVATA D89564
021	IC142070070	AGITATORE	BEATER	RÜHRWERK	AGITATEUR	AGITADOR
021A	IC142070230	AGITATORE 2E L SX P	BEATER 2E L SX P	RÜHRWERK 2E L SX P	AGITATEUR 2E L SX P SUNDAE/SOFT	AGITADOR 2E L SX P
021B	IC142070990	AGITATORE 3X L D.85 SX	BEATER 3X L D.85 SX	RÜHRWERK 3X L D.85 SX	AGITATEUR 3X L D.85 SX	AGITADOR 3X L D.85 SX
021C	IC142070360	AGITATORE 2E L SX	BEATER 2E L SX	RÜHRWERK 2E	AGITATEUR 2E	AGITADOR 2E
024	IC157180230	CONTRROAGITATORE COMPLETO	IDLER COMPLETE	GEGENRÜHRWERK KOMPL.	CONTRA-AGITATEUR COMPLET	CONTRA-AGITADOR COMPLETO
024A	IC157180340	CONTRROAGITATORE COMPLETO	IDLER COMPLETE	GEGENRÜHRWERK KOMPL.	CONTRA-AGITATEUR COMPLET	CONTRAAGITADOR COMPLETO
024B	IC157180250	CONTRROAGITATORE COMPLETO	IDLER COMPLETE	GEGENRÜHRWERK KOMPL.	CONTRA-AGITATEUR COMPLET	CONTRAAGITADOR COMPLETO
024C	IC157180320	CONTRROAGITATORE COMPLETO	IDLER COMPLETE	GEGENRÜHRWERK KOMPL.	CONTRA-AGITATEUR COMPLET	CONTRAAGITADOR COMPLETO
025P	IC173139040	TERMINALE AGITATORE P D.85 SX	PUSHER BEATER END PUMP DIA.85 LEFT	RÜHRWERKLEMME PUMPE D.85 LINKS	BORNE AGITATEUR POMPE D.85 GAUCHE	TERMINAL AGITADOR BOMBA D.85 IZQUIERDA
025Pc	IC173139020	TERMINALE AGITATORE P D.85 SX	PUSHER BEATER END PUMP DIA.85 LEFT	RÜHRWERKLEMME PUMPE D.85 LINKS	BORNE AGITATEUR POMPE D.85 GAUCHE	TERMINAL AGITADOR BOMBA D.85 IZQUIERDA
026	IC102159590	VASCETTA SGOCCIOLIO	TANK TRAY DRIP	TROPFSCHALE	CUVE D'EGOUTTEMENT	CUBETA-GOTEO
027	IC102159350	CASSETTINO SGOCCIOLIO L=650	DRAWER DRIP L=650	ABTROPFKASTEN L=650	TIROIR EGOUTTOIR L=650	CAJETÍN GOTEO L=650
027A	IC102159870	CASSETTINO SGOCCIOLIO POMPA L=580	DRAWER DRIP PUMP L=580	ABTROPFKASTEN PUMPE L=580	TIROIR EGOUTTOIR POMPE L=580	CAJETIN GOTEO BOMBA L=580
028	IC177120100	PREMISTOPPA AGITATORE	SEAL-DRIVE SHAFT BEATER	STOPFBÜCHSE RÜHRWERK	PRESSE ETOUPE AGITATEUR	PRENSAESTOPA AGITADOR
028A	IC177120620	PREMISTOPPA AGITATORE GOMMA NERA	SEAL-DRIVE SHAFT BEATER	STOPFBÜCHSE RÜHRWERK	PRESSE ETOUPE AGITATEUR	PRENSAESTOPA AGITADOR
029	IC102164510	COPERCHIO FORO CASSETTINO BIANCO	COVER-DRAWER DRIP WHITE	DECKEL OFFNUNG ABTROPFKASTEN WEIß	COUVERCLE OUVERTURE TIROIR BLANC	TAPA ORIFICIO CAJETIN BLANCO
030	IC118133040	PISTONE PORTELLO COMPLETO	ASSEMBLY PLUNGER DISPENSE	KOLBEN FRONTTÜR KOMPL.	PISTON PORTILLON COMPLET	PISTON PUERTA COMPLETO
030A	IC118136120	PISTONE PORTELLO	PLUNGER-DISPENSE	KOLBEN FRONTTÜR	PISTON PORTILLON	PISTON PUERTA
031	IC177110350	VALVOLA MEMBRANA SILICONE BIANCO	VALVE-MEMBRANE	MEMBRANVENTIL	SOUPAPE A MEMBRANE	VALVULA DE MEMBRANA
031A	IC177110380	VALVOLA MEMBRANA SILICONE BIANCO	VALVE-MEMBRANE	MEMBRANVENTIL	SOUPAPE A MEMBRANE	VALVULA DE MEMBRANA
032	IC129106750	TUBO COMPRESSIONE	PIPE-COMPRESSION FEED	DRUCKROHR	TUBE DE COMPRESSION	TUBO DE COMPRESIÓN
032A	IC129106760	TUBO COMPRESSIONE	PIPE-COMPRESSION FEED	DRUCKROHR	TUBE DE COMPRESSION	TUBO DE COMPRESIÓN
037	IC102163240	COPERTURA VASCETTA SGOCCIOLIO	COVER-TRAY DRIP	DECKEL ABTROPFSCHALE	COUVERCLE CUVE EGOUTTEMENT	CUBIERTA BANDEJA GOTEO
038B	IC152200080	COPPIA INGRANAGGI 152125540+152125640	SET GEARS 152125540+152125640	SET GEARS 152125540+152125640	KIT ENGRANAGE 152125540+152125640	KIT ENGRANAJE 152125540+152125640
038C	IC152200090	COPPIA INGRANAGGI 152120030+152120120	SET GEARS 152120030+152120120	SATZ-ZAHNRAD 152120030+152120120	KIT ENGRANAJE 152120030+152120120	KIT ENGRANAJE 152120030+152120120
039D	IC129515230	CORPO POMPA CON PERNI E BOCCOLA	ASSEMBLY BODY PUMP	PUMPENGEHAUSE MIT BOLZEN U.BUCHSE	CORPS POMPE AVEC TOURILLONS ET DOUILLE	CUERPO BOMBA CON PERNOS Y CASQUILLO
039E	IC129515240	CORPO POMPA CON PERNI E BOCCOLA	ASSEMBLY BODY PUMP	PUMPENGEHAUSE MIT BOLZEN U.BUCHSE	CORPS POMPE AVEC TOURILLONS ET DOUILLE	CUERPO BOMBA CON PERNOS Y CASQUILLO
039F	IC129515080	CORPO POMPA R CON PERNI	ASSEMBLY BODY PUMP	PUMPENGEHAUSE MIT BOLZEN	CORPS DE POMPE AVEC TOURILLONS	CUERPO BOMBA CON PERNOS
039G	IC129515350	CORPO POMPA R CON PERNI E BOCCOLA	ASSEMBLY BODY PUMP	PUMPENGEHAUSE MIT BOLZEN U.BUCHSE	CORPS POMPE AVEC TOURILLONS ET DOUILLE	CUERPO BOMBA CON PERNOS Y CASQUILLO
043	IC118170590	COMANDO PISTONE	HANDLE DISPENSE	BETÄTIGUNG KOLBEN	COMMANDE PISTON	MANDO PISTON 121 BIB
043A	IC118170800	COMANDO PISTONE	CONTROL PLUNGER DISPENSE	BETÄTIGUNG KOLBEN	COMMANDE PISTON	MANDO PISTON
047	IC171102620	VITE PRIGIONIERA	STUD	STIFTSCHRAUBE	BOULON PRISONNIER	TORNILLO PRISIONERO
047A	IC171100920	VITE PRIGIONIERA	STUD	STIFTSCHRAUBE	BOULON PRISONNIER	TORNILLO PRISIONERO
049	IC171102500	BOTTONE ARRESTO MENSOLA	STUD SHELF MTG	ANSCHLAGKNOPF KONSOLE	GOUJON BLOCAGE CONSOLE	BOTÓN PARA DETENCIÓN REPISA
049A	IC171102320	BOTTONE ARRESTO PORTADISPENSER	STUD MTG	ANSCHLAGKNOPF DISPENSERHALTER	GOUJON BLOCAGE PORTE-GOBELET	BOTÓN PARA DETENCIÓN DE PORTADISPENSADOR
055	IC171190280	ATTACCO SCIROPI	CONNECTOR-SYRUP	SIRUPANSCHLUSS	PRISE SIROP	CONEXIÓN JARABE
055B	IC588150490	CONNETTORE SACCH.SCIROPP.ASEPT 7169	CONNECTION	SIRUPANACHLUSS ASEPT 7169	CONNEXION SIROP ASEPT 7169	CONEXION JARABE ASEPT 7169
056	IC171155060	DADO M16 IN NYLON	NUT-NYLON M16	NYLONMUTTER M16	ECROU EN NYLON M16	TUERCA NYLON M16
056A	IC512352506	DADO E M 6 AUTOBLUNI7473 6S	NUT SELF-LOCKING M 6 UNI7473 6S	SELBSTSICHERENDE MUTTER M 6 UNI7473 6S	ECROU DE SECURITÉ M 6 UNI7473 6S	TUERCA AUTOBLOQUEANTE M 6 UNI7473 6S
056B	IC596110247	DADO TUBO SCARICO 82027	NUT-TUBE DISCHARGE 82027	MUTTER DER ABLASSROHR 82027	ECROU POUR TUBE D'EVACUATION 82027	TUERCA PARA TUBO DE DESCARGA 82027
060	IC102093014	LAM.LATERALE SUPERIORE DX	PANEL-UPPER SIDE RIGHT	SEITENBLECH RECHTS OBEN	TOLE LATERALE DROITE SUPERIEURE	CHAPA LATERAL DERECHA SUPERIOR
060A	IC102093009	LAM.LATERALE INFERIORE DX A	PANEL-LOWER SIDE RIGHT AIR COOLED	SEITENBLECH UNTEN RECHTS LUFTKOND.	TOLE LATERALE INF. DROITE AIR	CHAPA LATERAL INFERIOR DCH A
060B	IC102094350	LAM.LATERALE INFERIORE DX A	PANEL-LOWER SIDE RIGHT AIR COOLED	SEITENBLECH UNTEN RECHTS LUFTKOND.	TOLE LATERALE INF. DROITE AIR	CHAPA LATERAL INFERIOR DCH A
060C	IC102094730	LAM.LATERALE SUPERIORE DX	PANEL-UPPER SIDE RIGHT	SEITENBLECH RECHTS OBEN	TOLE LATERALE DROITE SUPERIEURE K3E	CHAPA LATERAL DERECHA SUPERIOR
061	IC102096014	LAM.LATERALE SUPERIORE SX	PANEL-UPPER SIDE LEFT	SEITENBLECH LINKS OBEN	TOLE LATERALE GAUCHE SUPERIEURE	CHAPA LATERAL IZQUIERDA SUPERIOR
061A	IC102096009	LAM.LATERALE INFERIORE SX A	PANEL-LOWER SIDE LEFT AIR COOLED	SEITENBLECH UNTEN LINKS LUFTKOND.	TOLE LATERALE INF. GAUCHE AIR	CHAPA LATERAL INFERIOR IZO A
061B	IC102097350	LAM.LATERALE INFERIORE SX A	PANEL-LOWER SIDE LEFT AIR COOLED	SEITENBLECH UNTEN LINKS LUFTKOND.	TOLE LATERALE INF. GAUCHE AIR	CHAPA LATERAL INFERIOR IZO A
061C	IC102097730	LAM.LATERALE SUPERIORE SX	PANEL-UPPER SIDE LEFT	SEITENBLECH LINKS OBEN	TOLE LATERALE GAUCHE SUPERIEURE	CHAPA LATERAL IZQUIERDA SUPERIOR
062	IC102106089	LAM.POSTERIORE SUPERIORE	PANEL-UPPER REAR	BLECH HINTEN OBEN	TOLE ARRIERE SUPERIEURE	CHAPA TRASERA SUPERIOR
062	IC102108960	LAM.POSTERIORE SUPERIORE	PANEL-UPPER REAR	BLECH HINTEN OBEN	TOLE ARRIERE SUPERIEURE	CHAPA TRASERA SUPERIOR
063A	IC102108970	LAM.POSTERIORE INFERIORE A	PANEL-LOWER REAR AIR COOLED	BLECH HINTEN UNTEN LUFTKOND.	TOLE ARRIERE INF. AIR	CHAPA TRASERA INF. AIRE
063W	IC102108980	LAM.POSTERIORE INFERIORE W	PANEL-LOWER REAR WATER COOLED	BLECH HINTEN UNTEN WASSERKOND.	TOLE ARRIERE INF. EAU	CHAPA TRASERA INF. AGUA
065	IC102061300	PANNELLO FRONTALE SUPERIORE COMPLETO	PANEL-UPPER FRONT COMPLETE	OBERE FRONTTAFEL, KOMPL.	PANNEAU FRONTAL SUPERIEUR COMPLET	PANEL FRONTAL SUPERIOR COMPLETO
065	IC102061410	PANNELLO FRONTALE SUPERIORE COMPLETO	PANEL-UPPER FRONT COMPLETE	OBERE FRONTTAFEL, KOMPL.	PANNEAU FRONTAL SUPERIEUR COMPLET	PANEL FRONTAL SUPERIOR COMPLETO
065	IC102061430	PANNELLO FRONTALE SUPERIORE COMPLETO	PANEL-UPPER FRONT COMPLETE	OBERE FRONTTAFEL, KOMPL.	PANNEAU FRONTAL SUPERIEUR COMPLET	PANEL FRONTAL SUPERIOR COMPLETO
065	IC102061440	PANNELLO FRONTALE SUPERIORE COMPLETO	PANEL-UPPER FRONT COMPLETE	OBERE FRONTTAFEL, KOMPL.	PANNEAU FRONTAL SUPERIEUR COMPLET	PANEL FRONTAL SUPERIOR COMPLETO
065	IC102061550	PANNELLO FRONTALE SUPERIORE COMPLETO	PANEL-UPPER FRONT COMPLETE	OBERE FRONTTAFEL, KOMPL.	PANNEAU FRONTAL SUPERIEUR COMPLET	PANEL FRONTAL SUPERIOR COMPLETO

POS	CODE	IT	EN	DE	FR	ES
065	IC102061620	PANNELLO FRONTALE SUPERIORE COMPLETO	PANEL-UPPER FRONT COMPLETE	OBERE FRONTTAFEL, KOMPL.	PANNEAU FRONTAL SUPERIEUR COMPLET	PANEL FRONTAL SUPERIOR COMPLETO
065	IC102061730	PANNELLO FRONTALE SUPERIORE COMPLETO	PANEL-UPPER FRONT COMPLETE	OBERE FRONTTAFEL, KOMPL.	PANNEAU FRONTAL SUPERIEUR COMPLET	PANEL FRONTAL SUPERIOR COMPLETO
065	IC102061810	PANNELLO FRONTALE SUPERIORE COMPLETO	PANEL-UPPER FRONT COMPLETE	OBERE FRONTTAFEL, KOMPL.	PANNEAU FRONTAL SUPERIEUR COMPLET	PANEL FRONTAL SUPERIOR COMPLETO
065	IC102061950	PANNELLO FRONTALE SUPERIORE COMPLETO	PANEL-UPPER FRONT COMPLETE	OBERE FRONTTAFEL, KOMPL.	PANNEAU FRONTAL SUPERIEUR COMPLET	PANEL FRONTAL SUPERIOR COMPLETO
065A	IC102068600	LAM.FRONTALE INTERMEDIA	PANEL-FRONT	MITTLERES FRONTBLECH	TOLE FRONTALE INTERMEDIAIRE	CHAPA FRONTAL INTERMEDIA
066	IC112000330	CONTENITORE FUSTINI SCIROPPI COMP.GRIGIO	ASSEMBLY CABINET TANK SYRUP GRAY	BEHALTER SIRUPDOSEN KOMPL. GRAU	LOGEMENT FUTS A SIROPS COMPLET GRIS	RECIPIENTE BOTES JARABE COMPLETO GRIS
066A	IC112000340	CONTENITORE FUSTINI SCIROPPI COMP.NERO	ASSEMBLY CABINET TANK SYRUP BLACK	BEHALTER SIRUPDOSEN KOMPL. SCHWARZ	LOGEMENT FUTS A SIROPS COMPLET NOIR	RECIPIENTE BOTES JARABE COMPLETO NEGRO
066B	IC112005520	CONTENITORE FUSTINI SCIROPPI	CABINET-TANK SYRUP	BEHALTER SIRUPDOSEN	LOGEMENT FUTS A SIROPS	RECIPIENTE BOTES JARABE
066C	IC112005570	CONTENITORE FUSTINI SCIROPPI	CABINET-TANK SYRUP	BEHALTER SIRUPDOSEN	LOGEMENT FUTS A SIROPS	RECIPIENTE BOTES JARABE
071	IC193010004	ESTRATTORE TAPPO	EXTRACTOR-PLUG	STOPFENAUSHEBER	EXTRACTEUR BOUCHON	EXTRACTOR TAPON
072	IC193010060	ESTRATTORE OR	O-RING	O-RING AUSHEBER	EXTRACTEUR JOINTS TORIQUES	EXTRACTOR OR
076	IC158210480	GUARNIZIONE MOVIMENTO POSTERIORE	GASKET-REAR	DICHTUNG HINTERANTRIEB	JOINT DEPLACEMENT ARRIERE	JUNTA MOVIMIENTO TRASERO
076A	IC158211010	GUARNIZIONE MOVIMENTO POSTERIORE	GASKET-REAR	DICHTUNG HINTERANTRIEB	JOINT DEPLACEMENT ARRIERE	JUNTA MOVIMIENTO TRASERO
077	IC164110090	SUPPORTO MOVIMENTO POSTERIORE	HOUSING BEARING & SHAFT	LAGERBOCK	SUPPORT MOUVEMENT ARRIERE	SOPORTE MOVIMIENTO TRASERO
079	IC158115510	ANELLO	RING	RING	JOINT	ANILLO
081	IC157150330	MOZZO	HUB	NABE	MOYEU	CUBO
081A	IC157165090	MOZZO PULEGGIA D.80 X 65	HUB-AXIAL SHEAVE DIA.80 X 65	NABE RIEMENSCHLEIBE D.80 X 65	MOYEU POULIE D.80 X 65	CUBO POLEA D.80 X 65
081A	IC157165160	MOZZO PULEGGIA D.80 X 30	HUB-AXIAL SHEAVE DIA.80 X 30	NABE RIEMENSCHLEIBE D.80 X 30	MOYEU POULIE D.80 X 30	CUBO POLEA D.80 X 30
081B	IC157150320	MOZZO	HUB	NABE	MOYEU	CUBO
085	IC155230200	PASTIGLIA ALETTA AGITATORE	PAD ANTI-FRICTION	BELAG	PASTILLE	PASTILLA
086	IC153101480	PUL.ASS.54 185 55	SHEAVE AXIAL 54 185 55	RIEMENSCHLEIBE AXIAL	POULIE AXIAL	POLEA AXIAL
086A	IC153101490	PUL.ASS.54 225 35	SHEAVE AXIAL 54 225 35	RIEMENSCHLEIBE AXIAL	POULIE AXIAL	POLEA AXIAL
087	IC153101550	PUL.M.V.12 1 OR 75 26	SHEAVE-MOTOR 12 1 OR 75 26	RIEMENSCHLEIBE MOTOR	POULIE MOTEUR	POLEA MOTOR
087A	IC153101560	PUL.M.V.12 1 OR 80 26	SHEAVE-MOTOR 12 1 OR 80 26	RIEMENSCHLEIBE MOTOR	POULIE MOTEUR	POLEA MOTOR
087B	IC153101580	PUL.M.V.12 1 OR 80 19	SHEAVE-MOTOR 12 1 OR 80 19	RIEMENSCHLEIBE MOTOR	POULIE MOTEUR	POLEA MOTOR
087C	IC153101590	PUL.M.V.12 1 OR 85 25	SHEAVE-MOTOR 12 1 OR 85 25	RIEMENSCHLEIBE MOTOR	POULIE MOTEUR	POLEA MOTOR
088	IC133123130	VENTOLA	FAN BLADE	LAUFRAD	VENTILATEUR	ASPA
088	IC587100226	VENTOLA RPM FB 56	BLADE FAN RPM FB 56	LAUFRAD RPM FB 56	VENTILATEUR RPM FB 56	ASPA OLMO RPM FB 56
093	IC178500460	CHIAVE GHIERA PORTELLO	WRENCH-RING NUT HEAD DISPENSE	SCHLÜSSEL GEWINDERING FRONTTUR	CLE COLLIER DE SERRAGE PORTILLON	LLAVE ABRAZADERA PUERTA
096	IC155103860	ALBERO POMPA	SHAFT-PUMP	PUMPENWELLE	ARBRE POMPE	ÁRBOL BOMBA
097	IC161155380	MANICOTTO MOZZO POMPA	COUPLING HUB PUMP	MUFFE PUMPENNABE	MANCHON MOYEU POMPE	MANGUITO CUBO BOMBA
097A	IC161155390	MANICOTTO MOZZO POMPA	COUPLING HUB PUMP	MUFFE PUMPENNABE	MANCHON MOYEU POMPE	MANGUITO CUBO BOMBA
102	IC158180150	GHIERA FISSAGGIO MOZZO POMPA	RING NUT-FIXING HUB PUMP	BEFESTIGUNGSNÜTRING PUMPENNABE	FRETTE DE FIXAGE MOYEU POMPE	ABRAZADERA FIJACIÓN CUBO BOMBA
102A	IC158175100	GHIERA	RING NUT	GEWINDERING	COLLIER DE SERRAGE	ABRAZADERA
1101	IC541000101	OR 1,78 2,9 NB 70 2012	O-RING 1,78 2,9 NB 70 2012	O-RING 1,78 2,9 NB 70 2012	JOINT TORIQUE 1,78 2,9 NB 70 2012	JUNTA TÓRICA 1,78 2,9 NB 70 2012
1105	IC541000105	OR 1,78 6,07 NB 70 2025	O-RING 1,78 6,07 NB 70 2025	O-RING 1,78 6,07 NB 70 2025	JOINT TORIQUE 1,78 6,07 NB 70 2025	JUNTA TÓRICA 1,78 6,07 NB 70 2025
1130	IC541000130	OR 2,62 17,13 NB 70 3068	O-RING 2,62 17,13 NB 70 3068	O-RING 2,62 17,13 NB 70 3068	JOINT TORIQUE 2,62 17,13 NB 70 3068	JUNTA TÓRICA 2,62 17,13 NB 70 3068
1131	IC541000131	OR 2,62 17,86 NB 70 123	O-RING 2,62 17,86 NB 70 123	O-RING 2,62 17,86 NB 70 123	JOINT TORIQUE 2,62 17,86 NB 70 123	JUNTA TÓRICA 2,62 17,86 NB 70 123
1140	IC541000140	OR 2,62 34,6 NB 70 3137	O-RING 2,62 34,6 NB 70 3137	O-RING 2,62 34,6 NB 70 3137	JOINT TORIQUE 2,62 34,6 NB 70 3137	JUNTA TÓRICA 2,62 34,6 NB 70 3137
1153	IC541000153	OR 3,53 26,58 NB 70 4106	O-RING 3,53 26,58 NB 70 4106	O-RING 3,53 26,58 NB 70 4106	JOINT TORIQUE 3,53 26,58 NB 70 4106	JUNTA TÓRICA 3,53 26,58 NB 70 4106
1178	IC541000178	OR 3,53 73,03 NB 50 176	O-RING 3,53 73,03 NB 50 176	O-RING 3,53 73,03 NB 50 176	JOINT TORIQUE 3,53 73,03 NB 50 176	JUNTA TÓRICA 3,53 73,03 NB 50 176
1188	IC541000188	OR 5,34 91,44 NB 40 6362	O-RING 5,34 91,44 NB 40 6362	O-RING 5,34 91,44 NB 40 6362	JOINT TORIQUE 5,34 91,44 NB 40 6362	JUNTA TÓRICA 5,34 91,44 NB 40 6362 121BIB
1195	IC541000195	OR 7 168,3 NB 60 229	O-RING 7 168,3 NB 60 229	O-RING 7 168,3 NB 60 229	JOINT TORIQUE 7 168,3 NB 60 229	JUNTA TÓRICA 7 168,3 NB 60 229
1224	IC541000224	OR 2,62 13,1 VMO 658/70 117 BIANCO	O-RING 2,62 13,1 VMO 658/70 117 WHITE	O-RING 2,62 13,1 VMO 658/70 117 WEIß	JOINT TORIQUE 2,62 13,1 VMO658/70 BLANC	JUNTA TÓRICA 2,62 13,1 VMO 658/70 BLANCO
1235	IC541000235	OR 1,78 28,3 FP 75 2112	O-RING 1,78 28,3 FP 75 2112	O-RING 1,78 28,3 FP 75 2112	JOINT TORIQUE 1,78 28,3 FP 75 2112	JUNTA TÓRICA 1,78 28,3 FP 75 2112
1239	IC541000239	OR 2,62 5,23 NB 70 3021	O-RING 2,62 5,23 NB 70 3021	O-RING 2,62 5,23 NB 70 3021	JOINT TORIQUE 2,62 5,23 NB 70 3021	JUNTA TÓRICA 2,62 5,23 NB 70 3021
1240	IC541000240	OR 2,62 22,00 NB 70 3087	O-RING 2,62 22,00 NB 70 3087	O-RING 2,62 22,00 NB 70 3087	JOINT TORIQUE 2,62 22,00 NB 70 3087	JUNTA TÓRICA 2,62 22,00 NB 70 3087
1246	IC541000246	OR 2 13 NB 70 ORM120-20	O-RING 2 13 NB 70 ORM120-20	O-RING 2 13 NB 70 ORM120-20	JOINT TORIQUE 2 13 NB 70 ORM120-20	JUNTA TÓRICA 2 13 NB 70 ORM120-20
1253	IC541000253	OR 2,62 45,69 NB 70 3181	O-RING 2,62 45,69 NB 70 3181	O-RING 2,62 45,69 NB 70 3181	JOINT TORIQUE 2,62 45,69 NB 70 3181	JUNTA TÓRICA 2,62 45,69 NB 70 3181
126	IC570500146	ATTUAT.OGNIBENE ALI1 50MM.+SENSORE	ACTUATOR OGNIBENE ALI1 50mm W/SENSOR	LINEARANTRIEB ALI1 50mm MIT SENSOR	VERIN LINEAIRE ALI1 50mm AVEC CAPTEUR	ACCIONADOR LINEAL ALI1 50mm CON SENSOR
1271	IC541000271	OR 1,78 3,69 NB 70 2015	O-RING 1,78 3,69 NB 70 2015	O-RING 1,78 3,69 NB 70 2015	JOINT TORIQUE 1,78 3,69 NB 70 2015	JUNTA TÓRICA 1,78 3,69 NB 70 2015
1289	IC541000289	OR 1,78 5,28 NB 70 2021	O-RING 1,78 5,28 NB 70 2021	O-RING 1,78 5,28 NB 70 2021	JOINT TORIQUE 1,78 5,28 NB 70 2021	JUNTA TÓRICA 1,78 5,28 NB 70 2021
1325	IC596110248	OR 82035 PER POMPA A FONTANA	O-RING 82035	O-RING 82035	JOINT TORIQUE 82035	JUNTA TÓRICA 82035
138	IC581500121	SPIA LIQUIDO DANFOSS SGP 10 ODS x ODM	SIGHT GLASS DANFOSS SGP 10 ODS x ODM	SCHAUGLAS FLÜSSIGKEITSSTAND SGP 10	TEMOIN LIQUIDE DANFOSS SGP 10 ODS x ODM	PILOTO LIQUIDO DANFOSS SGP 10 ODS x ODM
139	IC173110710	ROSETTA PIANA 9 38 5 4,8	WASHER-FLAT 9 38 5 4,8	FLACHSCHEIBE 9 38 5 4,8	RONDELLE PLATE 9 38 5 4,8	ARANDELA PLANA 9 38 5 4,8
139	IC173115380	ROSETTA PIANA 6 18 1,5 A2	WASHER-FLAT 6 18 1,5 A2	FLACHSCHEIBE 6 18 1,5 A2	RONDELLE PLATE 6 18 1,5 A2	ARANDELA PLANA 6 18 1,5 A2
139A	IC596110224	RONDELLA 82015	WASHER	UNTERLEGSCHLEIBE	RONDELLE	ARANDELA
140	IC581200820	CORPO VALV.SOL.DANFOSS EVR 3 032F3233	BODY VALVE SOLENOID DANFOSS EVR 3	GEHAUSE MAGNETVENTIL DANFOSS EVR 3	CORPS SOUPEPE SOLENOIDE DANFOSS EVR 3	CUERPO VALVULA SOLENOIDE DANFOSS EVR 3
140	IC581200824	CORPO VALV.SOL.DANFOSS EVR 6 032F6238	BODY VALVE SOLENOID DANFOSS EVR 6	GEHAUSE MAGNETVENTIL DANFOSS EVR 6	CORPS SOUPEPE SOLENOIDE DANFOSS EVR 6	CUERPO VALVULA SOLENOIDE DANFOSS EVR 6
141	IC581201004	BOBINA SOLEN.PARKER YB14 24V-50/60	COIL-PARKER YB14 24V-50/60 Hz	MAGNETSPULE PARKER YB14 24V-50/60 Hz	BOBINE SOLENOIDE PARKER YB14 24V-50/60	BOBINA SELENOIDE PARKER YB14 24V-50/60
141	IC581201042	BOBINA SOLEN.DANFOSS 24V-50/60 018F8270	COIL-DANFOSS 24V-50/60 018F8270	MAGNETSPULE DANFOSS 24V-50/60 018F8270	BOBINE SOLENOIDE 24V-50/60 018F8270	BOBINA SELENOIDE 24V-50/60 018F8270
1412	IC541000412	OR 2,62 13,95 FPM 70 FDA 3056 VERDE	O-RING 2,62 13,95 FPM 70 FDA 3056 GREEN	O-RING 2,62 13,95 FPM 70 FDA 3056 GRÜN	JOINT TORIQUE 2,62 13,95 FPM 70 FDA 3056	JUNTA TÓRICA 2,62 13,95 FPM 70 FDA 3056
146	IC581400104	FILTRO CASTEL 4316/M 10S a saldare	FILTER DRYER CASTEL 4316/M 10S (SOLDER)	FILTER CASTEL 4316/M 10S SCHWEIßEN	FILTRE CASTEL 4316/M 10S SOUDER	FILTRO CASTEL 4316/M 10S SOLDADURA
147	IC131150280	CONDENSATORE ACQUA WIELAND 846.10451 3/4	CONDENSER-WATER WIELAND 846.10451 3/4	WASSERKONDENSATOR WIELAND 846.10451 3/4	CONDENSEUR A EAU WIELAND 846.10451 3/4	CONDENSADOR AGUA WIELAND 846.10451 3/4
1477	IC541000477	OR 2 9 NB 70 NSF	O-RING 2 9 NB 70 NSF	O-RING 2 9 NB 70 NSF	JOINT TORIQUE 2 9 NB 70 NSF	JUNTA TÓRICA 2 9 NB 70 NSF
148	IC158150590	DISTANZIALE POSTERIORE	SPACER-REAR	DISTANZSTÜCK HINTEN	ENTRETOISE ARRIERE	DISTANCIADOR TRASERO
1483	IC541000483	OR 2 7,50 NBR-NSF 70 ORM 0075-20	O-RING 2 7,50 NBR-NSF 70 ORM 0075-20	O-RING 2 7,50 NBR-NSF 70 ORM 0075-20	JOINT TORIQUE 2 7,50 NBRNSF70 ORM0075-20	JUNTA TÓRICA 2 7,50 NBR-NSF70 ORM0075-20
149	IC158155170	DISTANZIALE	SPACER	DISTANZSTÜCK	ENTRETOISE	DISTANCIADOR
149A	IC158165360	DISTANZIALE	SPACER	DISTANZSTÜCK	ENTRETOISE	DISTANCIADOR

POS	CODE	IT	EN	DE	FR	ES
149B	IC158165370	DISTANZIALE	SPACER	DISTANZSTÜCK	ENTRETOISE	DISTANCIADOR
149C	IC158165660	DISTANZIALE SENSORE	SPACER-SENSOR	DISTANZSTÜCK SENSOR	ENTRETOISE CAPTEUR	DISTANCIADOR SENSOR
150	IC574300118	COND.EL.MARCIA 8µF 440V CODOLO M8 "UL"	CAPACITOR 8µF 440V M8 "UL"	ELEKTR.KONDENSATOR 8µF 440V M8 "UL"	CONDENSEUR ELECTRIQUE 8µF 440V M8 "UL"	CONDENSADOR ELECTRICO 8µF 440V M8 "UL"
155	IC596110226	INSERTO DI MANDATA B2018	INSERT-DELIVERY B2018	SCHICKT EINSATZ	ELEMENT D'ENVOYEE	INSERTO DE ENVIO
159	IC155103620	ALBERO AGITAZIONE	SHAFT-AGITATOR TANK MIX	WELLE	ARBRE AGITATION	ÁRBOL
159A	IC155115030	ALBERO BLENDER	SHAFT-BLENDER	WELLE-BLENDER	ARBRE BLENDER	ÁRBOL BLENDER
159A	IC599953088	ALBERO QUADRO B100	SQUARE SHAFT B100	ALBERO QUADRO B100	ALBERO QUADRO B100	ALBERO QUADRO B100
161	IC157135400	BOCCOLA SENSORE	BUSHING-SENSOR	SENSORBUCHSE	DOUILLE CAPTEUR	CASQUILLO SENSOR
161A	IC529410275	BOCCOLA CILINDRICA 12X16X20X25 BRONZO	BUSHING-CYLINDRICAL 12X16X20X25 BRONZE	BUCHSE ZYLINDRISCHE 12X16X20X25 BRONZE	DOUILLE CYLINDRIQUE 12X16X20X25 BRONZE	CASQUILLO CILINDRICO 12X16X20X25 BRONZE
161B	IC171240080	ARRESTO COMANDO PISTONE	STOPPER-CONTROL PISTON	ANSCHLAG BETÄTIGUNG KOLBEN	ARRÊT COMMANDE PISTON	DETENCIÓN MANDO PISTÓN
161C	IC529410321	BOCCOLA MB 10.20 DU/B	BUSHING-MB 10.20 DU/B	BUCHSE MB 10.20 DU/B	DOUILLE MB 10.20 DU/B	CASQUILLO MB 10.20 DU/B
162	IC142000080	AGITATORE COMPLETO MISCELA VASCA	AGITATOR TANK MIX	RUEHRWERKSBEHAELTER	AGITATEUR CUVE	AGITADOR MEZCLA EN CUBA
162A	IC142020760	AGITATORE MISCELA VASCA	AGITATOR-TANK MIX	RÜHRWERK IM BEHALTER	AGITATEUR MELANGE DANS CUVE	AGITADOR MEZCLA EN CUBA
163	IC164131660	PORTA ALBERO	HOLDER-SHAFT	WELLENHALTERUNG	PORTE-AXE	PORTA ÁRBOL
166	IC552620301	M.INTECNO BLD C FL57BL04 36V C.C.	MOTOR INTECNO BLD C FL57BL04 36V C.C.	MOTOR INTECNO BLD C FL57BL04 36V C.C.	MOTEUR INTECNO BLD C FL57BL04 36V C.C.	MOTOR INTECNO BLD C FL57BL04 36V C.C.
167	IC552810512	M.LAFERT AM802/AA6 B3 230400/50/3	MOTOR LAFERT AM802/AA6 B3 230400/50/3	MOTOR LAFERT AM802/AA6 B3 230400/50/3	MOTEUR LAFERT AM802/AA6 B3 230400/50/3	MOTOR LAFERT AM802/AA6 B3 230400/50/3
167	IC552810540	M.LAFERT AM80 AA6 B3 220380/60/3	MOTOR LAFERT AM80 AA6 B3 220380/60/3	MOTOR LAFERT AM80 AA6 B3 220380/60/3	MOTEUR LAFERT AM80 AA6 B3 220380/60/3	MOTOR LAFERT AM80 AA6 B3 220380/60/3
167A	IC552111042	M.CARP.M80C6 B3 208230/60/3	MOTOR CARPANELLI M80C6 B3 208230/60/3	MOTOR CARPANELLI M80C6 B3 208230/60/3	MOTEUR CARPANELLI M80C6 B3 208230/60/3	MOTOR CARPANELLI M80C6 B3 208230/60/3
167A	IC552811500	M.LAFERT AMH90L BA6 B3 IE2 230400/50/3	M.LAFERT AMH90L BA6 B3 IE2 230400/50/3	M.LAFERT AMH90L BA6 B3 IE2 230400/50/3	M.LAFERT AMH90L BA6 B3 IE2 230400/50/3	M.LAFERT AMH90L BA6 B3 IE2 230400/50/3
167A	IC552811540	M.LAFERT AMH100L AA6 B3 IE2 220380/60/3	M.LAFERT AMH100L AA6 B3 IE2 220380/60/3	M.LAFERT AMH100L AA6 B3 IE2 220380/60/3	M.LAFERT AMH100L AA6 B3 IE2 220380/60/3	M.LAFERT AMH100L AA6 B3 IE2 220380/60/3
168A	IC561102439	C.DORIN H150CCK POE TK "UL" 208230/60/3	C.DORIN H150CCK POE TK "UL" 208230/60/3	K.DORIN H150CCK POE TK "UL" 208230/60/3	C.DORIN H150CCK POE TK "UL" 208230/60/3	C.DORIN H150CCK POE TK "UL" 208230/60/3
168A	IC561102504	C.DORIN H180CC POE TK 230400/50/3	C.DORIN H180CC POE TK 230400/50/3	K.DORIN H180CC POE TK 230400/50/3	C.DORIN H180CC POE TK 230400/50/3	C.DORIN H180CC POE TK 230400/50/3
168A	IC561102530	C.DORIN H180S7 POE TK 200/5060/3	COMPRESSOR H180S7 POE TK 200/5060/3	KOMPRESSOR H180S7 POE TK 200/5060/3	COMPRESSEUR H180S7 POE TK 200/5060/3	COMPRESOR H180S7 POE TK 200/5060/3
168A	IC561222419	C.FRASCOLD A1,5-8 HT POE 230400/50/3	C.FRASCOLD A1,5-8 HT POE 230400/50/3	K.FRASCOLD A1,5-8 HT POE 230400/50/3	C.FRASCOLD A1,5-8 HT POE 230400/50/3	C.FRASCOLD A1,5-8 HT POE 230400/50/3
170A	IC551090151	M.VENT.SUNON DP200A 220240/5060/1	MOTOR-FAN SUNON DP200A 220240/5060/1	MOTORLUFTER SUNON DP200A 220240/5060/1	MOTEUR VENTIL.SUNON DP200A 220240/5060/1	MOTOR VENTIL.SUNON DP200A 220240/5060/1
170A	IC552290151	M.NMB 4715MS-23T-B50 230/5060/1	MOTOR-FAN NMB 4715MS-23T-B50 230/5060/1	MOTORLUFTER NMB 4715MS-23T-B50 230/5060/1	MOTEUR VEN.NMB 4715MS-23T-B50 230/5060/1	MOTOR VENT.NMB 4715MS-23T-B50 230/5060/1
170B	IC552290155	M.SUNTRONIX SJ9225HA2 220240/5060/1	MOTOR SUNTRONIX SJ9225HA2 220240/5060/1	MOTOR SUNTRONIX SJ9225HA2 220240/5060/1	MOTEUR SUNTRONIX SJ9225HA2 220240/5060/1	MOTOR SUNTRONIX SJ9225HA2 220240/5060/1
170D	IC551090355	M.VENT.EMC-S&P RB2C250/084"UL"230/5060/1	M.FAN EMC-S&P RB2C250/084"UL"230/5060/1	M.LUFTER EMC-S&P RB2C250/084"UL"230/5060/1	M.VENT.EMC-S&P RB2C250/084"UL"230/5060/1	M.VENT.EMC-S&P RB2C250/084"UL"230/5060/1
170D	IC551390351	M.VENT.FANS-TECH 250 230/50-60/1	MOTOR-FAN FANS-TECH 250 230/50-60/1	MOTORLUFTER FANS-TECH 250 230/50-60/1	MOTEUR VENTIL.FANS-TECH 250 230/50-60/1	MOTOR VENTILAD.FANS-TECH 250 230/50-60/1
171	IC574100328	TRAS.F.1- 100VA 0-24/8,5-0-8,5/0-12	TRANSFORMER 1- 100VA 0-24/8,5-0-8,5/0-12	TRANSFORMAT.1- 100VA 0-24/8,5-0-8,5/0-12	TRANSFORMAT.1- 100VA 0-24/8,5-0-8,5/0-12	TRANSFORMAD.1- 100VA 0-24/8,5-0-8,5/0-12
171	IC574100356	TRAS.F.1- 95VA 10,5-0-10,5/0-24 class II	TRANSFORMER 1- 95VA 10,5-0-10,5/0-24	TRANSFORMATOR 1- 95VA 10,5-0-10,5/0-24	TRANSFORMATEUR 1- 95VA 10,5-0-10,5/0-24	TRANSFORMADOR 1- 95VA 10,5-0-10,5/0-24
171A	IC574100302	TRAS.F.AMP.SIRIO 152050 RAPP.1/1000	TRANSFORMER SIRIO 152050 1/1000	TRANSFORMATOR SIRIO 152050 1/1000	TRANSFORMATEUR AMP. SIRIO 152050 1/1000	TRANSFORMADOR AMP. SIRIO 152050 1/1000
171A	IC574100349	TRAS.F.AMP.CR MAGNETICS CR8450 1/1000 cUL	TRANSFORMER CR MAGNETICS CR8450 1/1000 c	TRANSFORMATOR CR MAGNETICS CR8450 1/1000	TRANSFORMATEUR AMP. CR MAGNETICS CR8450	TRANSFORMADOR AMP. CR MAGNETICS CR8450
173	IC571100213	CONTACTTORE ABB A16-40-00 "UL" 110/50-60	CONTACTOR ABB A16-40-00 "UL" 110/50-60	SCHÜTZ ABB A16-40-00 "UL" 110/50-60	CONTACTEUR ABB A16-40-00 "UL" 110/50-60	CONTACTOR ABB A16-40-00 "UL" 110/50-60
173	IC571100228	CONTACTTORE ABB A12-30-10 24/50-60	CONTACTOR ABB A12-30-10 24/50-60	SCHÜTZ ABB A12-30-10 24/50-60	CONTACTEUR ABB A12-30-10 24/50-60	CONTACTOR ABB A12-30-10 24/50-60
174	IC571200204	TERMICO ABB TA25 DU 0,63+1A	THERMAL RELAY ABB TA25 DU 0,63+1A	THERMORELAIS ABB TA25 DU 0,63+1A	RELAIS TERMIQUE ABB TA25 DU 0,63+1A	RELÉ TÉRMICO ABB TA25 DU 0,63+1A
174	IC571200205	TERMICO ABB TA25 DU 1+1,4A	THERMAL RELAY ABB TA25 DU 1+1,4A	THERMORELAIS ABB TA25 DU 1+1,4A	RELAIS TERMIQUE ABB TA25 DU 1+1,4A	RELÉ TÉRMICO ABB TA25 DU 1+1,4A
174	IC571200206	TERMICO ABB TA25 DU 1,3+1,8A	THERMAL RELAY ABB TA25 DU 1,3+1,8A	THERMORELAIS ABB TA25 DU 1,3+1,8A	RELAIS TERMIQUE ABB TA25 DU 1,3+1,8A	RELÉ TÉRMICO ABB TA25 DU 1,3+1,8A
174	IC571200208	TERMICO ABB TA25 DU 2,2+3,1A	THERMAL RELAY ABB TA25 DU 2,2+3,1A	THERMORELAIS ABB TA25 DU 2,2+3,1A	RELAIS TERMIQUE ABB TA25 DU 2,2+3,1A	RELÉ TÉRMICO ABB TA25 DU 2,2+3,1A
174	IC571200209	TERMICO ABB TA25 DU 2,8+4A	THERMAL RELAY ABB TA25 DU 2,8+4A	THERMORELAIS ABB TA25 DU 2,8+4A	RELAIS TERMIQUE ABB TA25 DU 2,8+4A	RELÉ TÉRMICO ABB TA25 DU 2,8+4A
174	IC571200213	TERMICO ABB TA25 DU 3,5+5A	THERMAL RELAY ABB TA25 DU 3,5+5A	THERMORELAIS ABB TA25 DU 3,5+5A	RELAIS TERMIQUE ABB TA25 DU 3,5+5A	RELÉ TÉRMICO ABB TA25 DU 3,5+5A
174	IC571200214	TERMICO ABB TA25 DU 4,5+6,5A	THERMAL RELAY ABB TA25 DU 4,5+6,5A	THERMORELAIS ABB TA25 DU 4,5+6,5A	RELAIS TERMIQUE ABB TA25 DU 4,5+6,5A	RELÉ TÉRMICO ABB TA25 DU 4,5+6,5A
174	IC571200216	TERMICO ABB TA25 DU 7,5+11A	THERMAL RELAY ABB TA25 DU 7,5+11A	THERMORELAIS ABB TA25 DU 7,5+11A	RELAIS TERMIQUE ABB TA25 DU 7,5+11A	RELÉ TÉRMICO ABB TA25 DU 7,5+11A
177	IC583100134	PRESSOST.CC80 22/29 061F113000	CUT OUT PRESSURE CC80 22/29 061F113000	DRÜCKSCHALTER CC80 22/29 061F113000	PRESSOSTAT CC80 22/29 061F113000	PRESOSTATO CC80 22/29 061F113000
178	IC581100201	VALV.TERM.SPORLAN BBISE-2-ZP 3/8x1/2x1/4	VALVE-THERMOST.BBISE-2-ZP 3/8x1/2x1/4	THERMOSTATVENTIL BBISE-2-ZP 3/8x1/2x1/4	VALVULATA TERMOS.BBISE-2-ZP 3/8x1/2x1/4	VALVULA TERMOSTAT.BBISE-2-ZP 3/8x1/2x1/4
178	IC581101008	VALV.TERM.TUBE MOP 30 ORIF.06 068U3659	VALVE-THERMOS.TUBE MOP30 ORIF.06 068U3659	THERMOSTATVENT.TUBE MOP30 OF.06 068U3659	DETENDEUR THERM.TUBE MOP30 OR.06 068U3659	VALVULA TERMOST.TUBE MOP30 OR.06 068U3659
180	IC571200545	RELE FINDER 40.31 24V AC	RELAY FINDER 40.31 24V AC	RELAIS FINDER 40.31 24V AC	RELAIS FINDER 40.31 24V AC	RELE FINDER 40.31 24V AC
180A	IC571200548	RELE FINDER 40.52 24V AC	RELAY FINDER 40.52 24V AC	RELAIS FINDER 40.52 24V AC	RELAIS FINDER 40.52 24V AC	RELE FINDER 40.52 24V AC
180Aa	IC571200549	RELE FINDER 40.31 230V AC	RELAY FINDER 40.31 230V AC	RELAIS FINDER 40.31 230V AC	RELAIS FINDER 40.31 230V AC	RELE FINDER 40.31 230V AC
186D	IC192100090	DECAL.MARCHIO GRANDE	DECAL-BRAND LARGE	AUFKLEBER "CARPIGIANI" GROSS	DECALCOMANIE MARQUE GRAND	CALCOMANIA MARCA GRAN
186N	IC192113660	SET DECALC.POMPE SCIROPI COSS 38040 TTS	SET- SYRUP PUMP DECAL. COSS 38040 TTS	SATZ-AUFKLEBER SIRÜPPUMPE COSS 38040 TTS	KIT-DECALCOMANIE POMPE SIROPS COSS TTS	KIT-CALCOMANIA BOMBA JARABE COSS TTS
193A	IC596110250	PIATTELLO BLOCCAGGIO 82106	CUP 82106	TELLER 82106	GODET 82106	PLATILLO 82106
193B	IC596110227	PIATTELLO DI RISCONTRO 82022	CUP-BACKING 82022	GENENTELLER 82022	GODET DE DRESSAGE 82022	PLATILLO DE ENDEREZAR 82022
202	IC129038170	COPERCHIO POMPA	COVER-PUMP	PUMPENDECKEL	ECOUVERCLE POMPE	TAPA BOMBA
202A	IC129038180	COPERCHIO POMPA	COVER-PUMP	PUMPENDECKEL	ECOUVERCLE POMPE	TAPA BOMBA
202B	IC129035570	COPERCHIO POMPA R SHAKE	COVER-PUMP SHAKE	PUMPENDECKEL SHAKE	COUVERCLE POMPE SHAKE	TAPA BOMBA SHAKE
202C	IC129035230	COPERCHIO POMPA R	COVER-PUMP R -STAINLESS	PUMPENDECKEL R	COUVERCLE POMPE R	TAPA BOMBA R
206	IC178100870	MOLLA C1 1,5 15 42 5,24	SPRING C1 1,5 15 42 5,24	FEDER C1 1,5 15 42 5,24	RESSORT C1 1,5 15 42 5,24	MUELLE C1 1,5 15 42 5,24
206A	IC178100630	MOLLA C1 1 13,5 60 3,6	SPRING C1 1 13,5 60 3,6	FEDER C1 1 13,5 60 3,6	RESSORT C1 1 13,5 60 3,6	MUELLE C1 1 13,5 60 3,6
207	IC129050080	TUBO COLLEGAMENTO	PIPE-CONNECTION	VERBINDUNGSROHR	TUBE D'ASSEMBLAGE	TUBO DE CONEXIÓN
208	IC129002640	POMPA R COMPLETA	PUMP	PUMPE KPL.	POMPE COMPLETE	BOMBA COMPLETA
208A	IC129002650	POMPA R COMPLETA	PUMP	PUMPE KPL.	POMPE COMPLETE	BOMBA COMPLETA
208C	IC129002850	POMPA R COMPLETA SOFT	PUMP-SOFT	PUMPE KPL. SOFT	POMPE COMPLETE SOFT	BOMBA COMPLETA SOFT
208D	IC129002860	POMPA R COMPLETA SHAKE	PUMP-SHAKE	PUMPE KPL. SHAKE	POMPE COMPLETE SHAKE	BOMBA COMPLETA SHAKE
208E	IC129001170	POMPA R COMPLETA SHAKE	PUMP SHAKE	PUMPE KPL. SHAKE	POMPE COMPLETE SHAKE	BOMBA COMPLETA SHAKE
208F	IC129001160	POMPA R COMPLETA SOFT	PUMP SOFT	PUMPE KPL. SOFT	POMPE COMPLETE SOFT	BOMBA COMPLETA SOFT
208G	IC129002660	POMPA R COMPLETA	PUMP	PUMPE KPL.	POMPE COMPLETE	BOMBA COMPLETA
214	IC171101020	VITE REGOLAZIONE COMANDO PISTONE	SCREW ADJUSTMENT HANDLE DISPENSE	EINSTELLSCHRAUBE BETÄTIG. KOLBEN	VIS DE REGLAGE COMMANDE PISTON	TORNILLO DE REGULAC.MANDO PISTÓN 121 BIB
214	IC171115070	VITE REGOLAZIONE COMANDO PISTONE	SCREW ADJUSTMENT HANDLE DISPENSE	EINSTELLSCHRAUBE BETÄTIG. KOLBEN	VIS DE REGLAGE COMMANDE PISTON	TORNILLO DE REGULACION MANDO PISTÓN



POS	CODE	IT	EN	DE	FR	ES
214A	IC171102280	VITE REGOLAZIONE	SCREW ADJUSTMENT	EINSTELLSCHRAUBE	VIS DE REGLAGE	TORNILLO DE REGULACION
228	IC581110031	COPERTURA VALV. THERMOSTATICA TUBE	COVER-THERMOSTATIC VALVE	DECKEL THERMOSTATVENTIL	COUVERCLE SOUPAPE THERMOST.	CUBIERTA VÁLVULA THERMOSTÁTICA TUBO
236	IC173133320	TAPPO EROGAZIONE SCIROPPO	PLUG-SYRUP DISPENSE	VERSCHLUSSSTOPFEN SIRUPDISPENSER	BOUCHON DISTRIBUTION SIROPS	TAPON DISTRIBUCION JARABES
240	IC591000234	RUOTA GIREV.TELLURA-R. 68749 D.100+FRENO	CASTER-WV/ BRAKE TELLURA-R. 68749 DIA.100	DREHBARES RAD TELLURA-R. 6874 100+BREMSE	ROUE PIVOTANTE TELLURA-R.68749 100+FREIN	RUEDA GIRATORIA TELLURA-R.68749 100+FREN
241	IC591000134	RUOTA FISSA TELLURE-ROTA 68745 D.100	CASTER-W/O BRAKE TELLURA-R.68745 DIA.100	FESTSTEHENDES RAD TELLURA-R. 68745 D.100	ROUE FIXE TELLURA-ROTA 68745 D.100	RUEDA FIJA TELLURA-ROTA 68745 D.100
243	IC177120090	PREMISTOPPA CORPO POMPA	SEAL-DRIVE BODY PUMP	STOPFBÜCHSE PUMPENGEHAUSE	PRESSE ETOUPE CORPS DE POMPE	PRENSASTOPA CUERPO BOMBA
245	IC177110420	VALVOLA POMPA	VALVE-PUMP	PUMPENVENTIL	SOUPAPE POMPE	VALVULA BOMBA
250	IC102144950	COPERCHIO VASCA	COVER-TANK MIX STORAGE	BEHALTERDECKEL	COUVERCLE CUVE	TAPA CUBA
255C	IC171115040	VITE CHIUSURA FORO PORTADISPENSER	SCREW-SEALING DISPENSER HOLDER HOLES	VERSCHLUSSSCHRAUBE BOHRUNGEN DISPENSERHA	VIS FERMETURE TROU PORTE GOBELET	TORNILLO CIERRE ORIFICIO PORTA DISPENSAD
255D	IC511528510	VITE TCCI M 5X 10 DIN85 A2	SCREW-SPH M 5X 10 DIN85 A2	SCHRAUBE M 5X 10 DIN85 A2	VIS M 5X 10 DIN85 A2	TORNILLO M 5X 10 DIN85 A2
255E	IC511530516	VITE TSP M 5X 16 UNI6109 A2	SCREW-FH M 5X 16 UNI6109 A2	SCHRAUBE M 5X 16 UNI6109 A2	VIS M 5X 16 UNI6109 A2	TORNILLO M 5X 16 UNI6109 A2
257	IC158262460	CARTER PORTELLO	CASING-HEAD DISPENSE	SCHUTZABDECKUNG KLASPE	CARTER PORTILLON	CARTER PUERTA
259	IC596110254	CORPO VALVOLA 82431	BODY VALVE 82431	VENTILGEHAUSE 82431	CORPS SOUPAPE 82431	CUERPO VALVULA 82431
260	IC118155440	FRASTAGLIATORE PORTELLO	NOZZLE UNIT	STERNTÜLE	SEPARATEUR	EQUIPO PARA ESTRIAS
265	IC596110239	INSIEME PISTONE/GAMBO 82013	ASSEMBLY PLUNGER AND SHANK 82013	MONTAGE KOLBEN UND SCHAFT 82013	ENSEMBLE PISTON ET TIGE 82013	ENSAMBLAJE PISTÓN Y VÁSTAGO 82013
268	IC102152560	COPERCHIO VASCHETTA TOPPING	COVER-TOPPING CONTAINER	DECKEL TOPPING BEHÄLTER	COUVERCLE CUVE DE TOPPING	TAPA CUBETA TOPPING
270	IC552200010	PORTAFILTRO COMPL.NMB F92/MR	HOLDER-FILTER ASSY NMB F92/MR	FILTERHALTER KOMPL. NMB F92/MR	PORTE-FILTRE COMPLET NMB F92/MR	PORTAFILTRO COMPLETO NMB F92/MR
270A	IC193010005	FILTRO CONDENSATORE ARIA COMPLETO	ASSEMBLY FILTER AIR	LUFFILTER KOMPL.	FILTRE AIR COMPLET	FILTRO AIRE COMPLETO
271	IC129046040	REGOLATORE POMPA	TUBE PUMP FEEDING	PUMPENREGLER	REGULATEUR DE POMPE	REGULADOR BOMBA
271A	IC129046050	REGOLATORE POMPA	TUBE PUMP FEEDING	PUMPENREGLER	REGULATEUR DE POMPE	REGULADOR BOMBA
271B	IC129046060	REGOLATORE POMPA	TUBE PUMP FEEDING	PUMPENREGLER	REGULATEUR DE POMPE	REGULADOR BOMBA
271C	IC129046130	REGOLATORE POMPA SOFT	TUBE PUMP FEEDING	PUMPENREGLER	REGULATEUR DE POMPE	REGULADOR BOMBA
271D	IC129046140	REGOLATORE POMPA SHAKE	TUBE PUMP FEEDING	PUMPENREGLER	REGULATEUR DE POMPE	REGULADOR BOMBA
284	IC153101530	PUL.A.V.M8 2 OR 85/80 28	SHEAVE AGITATOR MIX TANK M8 2OR 85/80 28	RIEMENSCHLEIBE RÜHRER MIX	POULIE AGITATEUR MELANGE	POLEA AGITADOR MEZCLA
284A	IC153101540	PUL.A.V.M8 1 OR 85 28	SHEAVE AGITATOR MIX TANK M8 1 OR 85 28	RIEMENSCHLEIBE RÜHRER MIX	POULIE AGITATEUR MELANGE	POLEA AGITADOR MEZCLA
329	IC158130130	ANELLO TENUTA	O-RING	DICHTRING	JOINT DE SERRAGE	ANILLO RETÉN
332	IC171125320	ATTACCO ALBERO GIRANTE	JOINT-SHAFT	ANSCHLUSS LAUFRADWELLE	EMBOUT SPINER	CONEXIÓN ÁRBOL GIRATORIO
332A	IC171125360	ATTACCO ALBERO GIRANTE	JOINT-SHAFT	ANSCHLUSS LAUFRADWELLE	PRISE ARBRE PALETTE A MELANGER	CONEXIÓN ÁRBOL GIRATORIO
346	IC589100241	VALVOLA A SFERA MF 1/8"AIGNEP 6310	VALVE-BALL 1/8" MALE/FEMALE AIGNEP 6310	KUGELHÄHNE 1/8" AUSSENGEW./INNENGEW.	SOUPAPE Á BILLE 1/8" MALE/FEMELLE AIGNEP	VALVULA DE BOLA 1/8" MACHO/HEMBRA AIGNEP
351	IC589110023	CANNA SNOTADA ART.601/1 D.18X180+ROMPIG.	DISPENSER-SWIVEL 601/1 D.18X180 +DRIP P.	ABGABETÜLE ART.601/1 D.18X180	DISTRIBUTEUR ART.601/1 D.18X180	DISPENSADOR ART.601/1 D.18X180
352	IC158200510	GUARNIZIONE ELETTROVALVOLA	SEAL-SOLENOID VALVE	DICHTUNG MAGNETVENTIL	JOINT ELECTROVANNE	JUNTA ELECTROVALVULA
352B	IC596110229	GUARNIZIONE CON ANELLO AD "O" 83003	SEAL W/RING 83003	DICHTUNG MIT RING 83003	JOINT 83003	JUNTA CON ANILLO 83003
359	IC581400136	FILTRO ACQUA CRC DN10 PN20 3/8"	FILTER-WATER DN10 PN20 3/8"	WASSERFILTER DN10 PN20 3/8"	FILTRE EAU DN10 PN20 3/8"	FILTRO AGUA DN10 PN20 3/8"
365	IC551420151	M.RPM COD.F0005.01 220/5060/1	MOTOR RPM COD.F0005.01 220/5060/1	MOTOR RPM COD.F0005.01 220/5060/1	MOTEUR RPM COD.F0005.01 220/5060/1	MOTOR RPM COD.F0005.01 220/5060/1
365A	IC552111548	M.CARP.M90L6 B3 MOR5.DX UL 208230/60/3	MOTOR CARPANELLI M90L6 UL 208230/60/3	MOTOR CARPANELLI M90L6 UL 208230/60/3	MOTEUR CARPANELLI M90L6 UL 208230/60/3	MOTOR CARPANELLI M90L6 UL 208230/60/3
365D	IC552820340	M.LAFERT AM63AA2 B14 208230-460/60/3	MOTOR LAFERT AM63AA2 B14 208230-460/60/3	MOTOR LAFERT AM63AA2 B14 208230-460/60/3	MOTEUR LAFERT AM63AA2 B14 208230460/60/3	MOTOR LAFERT AM63AA2 B14 208230-460/60/3
365E	IC552820350	M.LAFERT AMM63Z BA2 B14 230/50/1	MOTOR LAFERT AMM63Z BA2 B14 230/50/1	MOTOR LAFERT AMM63Z BA2 B14 230/50/1	MOTEUR LAFERT AMM63Z BA2 B14 230/50/1	MOTOR LAFERT AMM63Z BA2 B14 230/50/1
367	IC157100070	BOCCOLA TRASCINAMENTO GIRANTE	BUSHING-SPINNER DRIVEN	MITNEHMERBUCHSE LAUFRAD	DOUILLE ENTRAINEMENT PALETTE A MELANGER	CASQUILLO ARRASTRE ROTOR
369	IC142002170	GIRANTE COMPLETA	SPINNER ASSEMBLY	LAUFRAD KOMPL.	PALETTE A MELANGER COMPLETE	ROTOR COMPLETO
369A	IC142002190	GIRANTE COMPLETA	SPINNER ASSEMBLY	LAUFRAD KOMPL.	PALETTE A MELANGER COMPLETE	ROTOR COMPLETO
370	IC164140320	COPERCHIETTO COMPLETO	COVER ASSEMBLY	DECKEL KOMPL.	COUVERCLE COMPLET	TAPADERITA COMPLETA
370	IC164140360	COPERCHIETTO COMPLETO	COVER ASSEMBLY	DECKEL KOMPL.	COUVERCLE COMPLET	TAPADERITA COMPLETA
372	IC596110246	MANOPOLA COLORE NERO 82023-	HAND GRIP	MANOPOLA COLORE NERO 82023-	POMMEAU POMPE A SIROP - NERO 82023-	MANOPOLA COLORE NERO 82023-
372A	IC596110258	MANOPOLA COLORE BIANCO 82023-	HANDLE WHITE 82023-	MANOPOLA COLORE BIANCO 82023-	POMMEAU BLANC - 82023	MANOPOLA COLORE BIANCO 82023-
377	IC177190550	PORTAVALVOLE	HOLDER-VALVE	VENTILHALTERUNG	SUPPORT VALVE	PORTAVALVULA
379	IC588150451	RACC.IN.R.L GIR.PLAST.31090810 1/8MxD. 8	COUPLING-QUIJK CON-PLASTIC 1/8MxD. 8	SCHNELLVERSCHRAUBUNG PLASTK 1/8MxD. 8	RACCORD PRISE RAPIDE PLASTIQUE 1/8MxD. 8	RACOR INIERTO RÁPIDO PLÁSTICO 1/8MxD. 8
382	IC581200201	VALVOLA SOLEN.SPORLAN V4SM6	VALVE-SOLENOID SPORLAN V4SM6	MAGNETVENTIL SPORLAN V4SM6	SOUPAPE SOLENOIDE SPORLAN V4SM6	VALVULA SOLENOIDE SPORLAN V4SM6
382	IC581200202	VALVOLA SOLEN.SPORLAN V8SM10	VALVE-SOLENOID SPORLAN V8SM10	MAGNETVENTIL SPORLAN V8SM10	SOUPAPE SOLENOIDE SPORLAN V8SM10	VALVULA SOLENOIDE SPORLAN V8SM10
384	IC589800155	TUBO POLIURETANO NEUTRO D.4/ 6 90-98SH	HOSE-POLYURETHANE 90-98SH DIA.4/ 6	POLYURETHANSCHLAUCH 90-98SH D.4/ 6	TUBE POLYURETHANE 90-98SH D.4/ 6	TUBO POLIURETANO 90-98SH D.4/ 6
385	IC157245040	TUBO PERISTALTICA COMPLETO	TUBE-ASSY PERISTALTIC	PERISTALTISCHES ROHR	TUBE PERISTALTIQUE COMPLET	TUBO PERISTÁLTICA COMPLETO
386	IC112000540	CONTENITORE SCIROPPO COMPLETO	TANK-SYRUP ASSY	SIRUPBEHÄLTER KOMPL.	RECIPIENT A SIROP COMPLETE	RECIPIENTE DE JARABES COMPLETO
386	IC1120005640	CONTENITORE SCIROPPO 2LT.	TANK-SYRUP 2LT.	SIRUPBEHÄLTER 2LT.	RECIPIENT A SIROP 2LT.	RECIPIENTE DE JARABES 2LT.
386	IC1120005670	CONTENITORE SCIROPPO 5LT	TANK-SYRUP 5LT	SIRUPBEHÄLTER 5LT	RECIPIENT A SIROP 5LT	RECIPIENTE DE JARABES 5LT
386	IC1120005690	CONTENITORE SCIROPPO	TANK SYRUP	SIRUPBEHÄLTER	RECIPIENT A SIROP	RECIPIENTE DE JARABES
387	IC102154200	COPERCHIO CONTENITORE SCIROPPO	COVER-SYRUP TANK	DECKEL SIRUPBEHÄLTER	COUVERCLE RECIPIENT SIROP	TAPA RECIPIENTE DE JARABE
387	IC102154840	COPERCHIO CONTENITORE SCIROPPO	COVER-SYRUP TANK	DECKEL SIRUPBEHÄLTER	COUVERCLE RECIPIENT SIROP	TAPA RECIPIENTE DE JARABE
387	IC102154880	COPERCHIO CONTENITORE SCIROPPO	COVER-SYRUP TANK	DECKEL SIRUPBEHÄLTER	COUVERCLE RECIPIENT SIROP	TAPA RECIPIENTE DE JARABE
387B	IC596110253	COPERCHIO 82136	COVER 82136	DECKEL 82136	COUVERCLE 82136	TAPA 82136
388B	IC596110236	OR 05127 PER POMPA A FONTANA FP	O-RING 05127	O-RING 05127	JOINT TORIQUE 05127	JUNTA TÓRICA 05127
388C	IC596110237	OR 82323 PER POMPA A FONTANA FP	O-RING 82323	O-RING 82323	JOINT TORIQUE 82323	JUNTA TÓRICA 82323
389	IC588111163	ATTACCO INNESTO CPC.APC 3/8" Art.40800	CONNECTION CPC.APC 3/8" Art.40800	ANCHLUSS CPC.APC 3/8" Art.40800	CONNEXION CPC.APC 3/8" Art.40800	CONEXIÓN CPC.APC 3/8" Art.40800
389A	IC588111164	ATTACCO INNESTO CPC.APCD170-06SH 3/8"	CONNECTION CPC.APCD170-06SH 3/8"	ANCHLUSS CPC.APCD170-06SH 3/8"	CONNEXION CPC.APCD170-06SH 3/8"	CONEXIÓN CPC.APCD170-06SH 3/8"
394A	IC157240530	TUBO PESCAGGIO LIQUIDO	PIPE-SUCTION SYRUP	ANSAUGROHR SIRUP	TUBE PLONGEUR SIROP	TUBO DE RECUPERACIÓN JARABE
394A	IC157240880	TUBO PESCAGGIO SCIROPPO	PIPE-SUCTION SYRUP	ANSAUGROHR SIRUP	TUBE PLONGEUR SIROP	TUBO DE RECUPERACIÓN JARABE
408	IC581300525	VALVOLA DI SERVIZIO COMPLETA	VALVE-SERVICE ASSEMBLY	BETRIEBSVENTIL KOMPL.	SOUPAPE SERVICE COMPLETE	VALVULA SERVICIO COMPLETA
410	IC596110255	CILINDRO 82358	CYLINDER 82358	ZYLINDER 82358	CYLINDRE 82358	CILINDRO 82358
414	IC581300332	CONTATORE FHKF33 ARNITE 1/4"G R1,2K	METER WATER 1/4"G R1,2K	WASSERZÄHLER 1/4"G R1,2K	COMPTEUR EAU 1/4"G R1,2K	CONTADOR DE AGUA 1/4"G R1,2K
422	IC107148320	SUPPORTO POMPA TOPPING	SPACER PUMP TOPPING	HALTER TOPPING PUMPE	SUPPORT POMPE TOPPING	SOPORTE BOMBA TOPPING
422A	IC107148310	SUPPORTO VASCHETTE 097006003	SHIELD CONTAINER HOT TOPPING	HALTER TOPPING BEHÄLTER	SUPPORT CUVES	SOPORTE CUBETAS

POS	CODE	IT	EN	DE	FR	ES
424	IC589800129	TUBO PLASTICA D.10/16 RINFORZATO-ARIANNA	TUBE-PLASTIC REINFORCED DIA.10/16	KUNSTSTOFFROHR VERSTÄRKTER D.10/16	TUBE PLASTIQUE RENFORCÉ D.10/16	TUBO PLÁSTICORENFORZADO D.10/16
424B	IC596110245	TUBO DI MANDATA 82017	TUBE-DELIVERY 82017	SCHICKT ROHR VON 82017	TUBE D'ENVOYÉE TOPPING 82017	TUBO DE ENVÍO 82017
424C	IC596110244	TUBO DI SCARICO 80032	PIPE-OUTLET 80032	ABLASSROHR 80032	TUBE D'EVACUATION 80032	TUBO DE DESCARGA 80032
424D	HC196254	TUBING-5/16 ID X 1/8 WA INNER BRAID	TUBING-5/16 ID X 1/8 WA INNER BRAID	TUBING-5/16 ID X 1/8 WA INNER BRAID	TUBE SIROP K3	
425	IC581300301	ELETTROV.ELBI ART.329029 24V	VALVE-SOLENOID WATER ELBI ART.329029 24V	MAGNETVENTIL ELBI ART.329029 24V	ELECTROVANNE A EAU ELBI ART.329029 24V	ELECTROVALVULA AGUA ELBI ART.329029 24V
430	IC141116490	ALETTA RASCIANTE CON GOMMINO	SCRAPER-W/STOPPER RUBBER	ABSTREIFERFLÜGEL MIT GUMMI	AILETTE A RACLER AVEC CAOUTCHOUC	ALETA RASCADORA CON GOMA
430A	IC141116510	ALETTA RASCIANTE CON GOMMINO	SCRAPER-W/STOPPER RUBBER	ABSTREIFERFLÜGEL MIT GUMMI	AILETTE A RACLER AVEC CAOUTCHOUC	ALETA RASCADORA CON GOMA
433B	IC596110225	MOLLA 82016	SPRING 82016	FEDER 82016	RESSORT 82016	MUELLE 82016
462	IC118315020	CORPO SUPPORTO SENSORE	BODY BRACKET SENSOR	LAGERGEHAUSE SENSOR	CORPS SUPPORT CAPTEUR	CUERPO SOPORTE SENSOR
475	IC193013940	KIT K3 PORTELLO SOFT	KIT-K3 SOFT SERVE DOOR	SATZ-K3 FRONTTÜR SOFT	KIT-K3 PORTILLON SOFT	KIT-K3 PUERTA SOFT
476	IC193013920	KIT K3 PORTELLO SHAKE	KIT-K3 PORTELLO SHAKE	SATZ-K3 SHAKE SPOUT	KIT-K3 PORTILLON SHAKE	KIT-K3 PUERTA SHAKE
476	IC193013930	KIT K3 AGITATORE SHAKE	KIT-K3 SHAKE BEATER	SATZ-K3 RÜHRWERK SHAKE	KIT-K3 AGITATEUR SHAKE	KIT-K3 AGITADOR SHAKE
477	IC193010006	VASSOIO SOFT-POMPA	TRAY MACHINE SOFT-PUMP	ABSTELLPLATTE SOFT-PUMPE	PLATEAU PORTE ACCESSOIRES SOFT-POMPE	BANDEJA SOFT-BOMBA
477A	IC193010620	VASSOIO SOFT-PORTELLO	TRAY MACHINE SOFT-HEAD DISPENSE	ABSTELLPLATTE SOFT-FRONTVERSCHLUSS	PLATEAU PORTE ACCESSOIRES SOFT-PORTILLON	BANDEJA SOFT-PORTILLO
478	IC193010007	VASSOIO SHAKE-POMPA	TRAY MACHINE SHAKE-PUMP	ABSTELLPLATTE SHAKE-PUMPE	PLATEAU PORTE ACCESSOIRES SHAKE-POMPE	BANDEJA SHAKE-BOMBA
478A	IC193010008	VASSOIO SHAKE-PORTELLO	TRAY MACHINE SHAKE-HEAD DISPENSE	ABSTELLPLATTE SHAKE-FRONTVERSCHLUSS	PLATEAU PORTE ACCESSOIRES SHAKE-PORTILLON	BANDEJA SHAKE-PORTILLO
479	IC193010510	BICCHIERE DOSAGGIO SCIROPPI	CALIBRATION CUP	DOSIERBECHER		
488	IC107166123	SUPPORTO BICCHIERE	HOLDER-CUPS	BECHERHALTER		SOPORTE VASOS
488	IC107166239	SUPPORTO BICCHIERE	HOLDER-CUPS	BECHERHALTER		SOPORTE VASOS
491	IC570100148	POMPA PERIST.WATSON-MARLOW 313D PUMPHEAD	PUMP-WATSON-MARLOW 313D PUMPHEAD	PUMPE WATSON-MARLOW 313D PUMPHEAD	POMPE WATSON-MARLOW 313D PUMPHEAD	BOMBA WATSON-MARLOW 313D PUMPHEAD
491A	IC596110257	POMPA FONTANA SERVER 80030 WHITE	PUMP-SERVER 80030 WHITE	PUMPE SERVER 80030 WEIß	POMPE SERVER 80030 BLANC	BOMBA SERVER 80030 BLANCO
491B	IC596110233	POMPA FONTANA SERVER 80030 BLACK	PUMP-SERVER 80030 BLACK	PUMPE SERVER 80030 SCHWARZ	POMPE SERVER 80030 NOIR	BOMBA SERVER 80030 NEGRO
493	IC526200613	RALLA O-TAR D.12/20 SFERE POM 31420127	SWIVEL RING O-TAR D.12/20 POM 31420127	KONTAKTRING O-TAR D.12/20 POM 31420127	BUTÉE O-TAR D.12/20 POM 31420127	ACOPLAMIENTO O-TAR D.12/20 POM 31420127
495	IC596100217	VASCHETTA SCIROPPI 229001239	PAN-SYRUP	SIRUPSCHALE	BAC A SIROP	CUBETA DE JARABES
500	IC558900011	RIDUTTORE ORIENTAL MOTOR 5GN12,5K 1:12,5	GEARBOX-ORIENTAL MOTOR 5GN12,5K 1:12,5	GETRIEBE ORIENTAL MOTOR 5GN12,5K 1:12,5	REDUCTEUR ORIENTAL MOTOR 5GN12,5K 1:12,5	REDUCTOR ORIENTAL MOTOR 5GN12,5K 1:12,5
500A	IC558900015	RIDUTTORE TRANSTECNO CM026 1: 7,5	GEARBOX-TRANSTECNO CM026 1: 7,5	GETRIEBE TRANSTECNO CM026 1: 7,5	REDUCTEUR TRANSTECNO CM026 1: 7,5	REDUCTOR TRANSTECNO CM026 1: 7,5
526	IC597000123	MESTOLO INOX VOLLRATH-46901 1OZ (29ML.)	LADLE-INOX VOLLRATH-46901 1OZ (29ML.)	LOFFE INOX VOLLRATH-46901 1OZ (29ML.)	LOUCHE INOX VOLLRATH-46901 1OZ (29ML.)	CUCHARÓN INOX VOLLRATH-46901 1OZ (29ML.)
586	IC519000130	ANELLO EL.SIC.30 UNI7435 C70	RING-RETAINING DIA.30 UNI7435 C70	SEEGERRING 30 UNI7435 C70	CIRCLIPS 30 UNI7435 C70	ANILLO ELÁSTICO 30 UNI7435 C70
586A	IC519000262	ANELLO EL.SIC.62 UNI7437 C70	RING-RETAINING DIA.62 UNI7437 C70	SEEGERRING 62 UNI7437 C70	JOINT ELASTIQUE 62 UNI7437 C70	ANILLO ELÁSTICO 62 UNI7437 C70
586B	IC519100155	ANELLO EL.SIC. 5 UNI7434 A2	O-RING-SNAP DIA. 5 UNI7434 A2	SEEGERRING 5 UNI7434 A2	JOINT ELASTIQUE 5 UNI7434 A2	ANILLO ELÁSTICO 5 UNI7434 A2
586C	IC519100159	ANELLO EL.SIC. 9 UNI7434 A2	O-RING-SNAP DIA. 9 UNI7434 A2	SEEGERRING 9 UNI7434 A2	JOINT ELASTIQUE 9 UNI7434 A2	ANILLO ELÁSTICO 9 UNI7434 A2
595	IC599953089	SUPPORTO D16 TONDO NERO 111743	SUPPORT DIA.16 BLACK ROUND 111743	SUPPORTO D16 TONDO NERO 111743	SUPPORTO D16 TONDO NERO 111743	SUPPORTO D16 TONDO NERO 111743
595A	IC599953090	TASTO D16 TONDO VERDE (START) 122519	PUSH BUTTON DIA.16 ROUND GREEN 122519	TASTO D16 TONDO VERDE (START) 122519	TASTO D16 TONDO VERDE (START) 122519	TASTO D16 TONDO VERDE (START) 122519
595B	IC599953120	MICRO A PULSANTE	MICROSWITCH BUTTON	MICRO A PULSANTE	MICRO A PULSANTE	MICRO A PULSANTE
600	IC558910157	MR.ZD 5IK40GN-CP/5GN3,6K 230/5060/1	GEARMOT.ZD 5IK40GN-CP/5GN3,6K 230/5060/1	GE.MOTOR.ZD 5IK40GN-CP/5GN3,6K 230/5060/1	MOTO-RED.ZD 5IK40GN-CP/5GN3,6K 230/5060/1	MOTORRED.ZD 5IK40GN-CP/5GN3,6K 230/5060/1
600A	IC558910270	MR.TRANSTECNO CM026 1: 7,5 DX 230/60/1	GEARMOTOR CM026 1: 7,5 RIGHT 230/60/1	GE.MOTOR CM026 1: 7,5 RECHTS 230/60/1	MOTO-RED. CM026 1: 7,5 DROITE 230/60/1	MOTORRED. CM026 1: 7,5 DERECHA 230/60/1
600B	IC558910160	MR.ZD 5IK40GN-CP/5GN12,5K 230/5060/1	GEARM.ZD 5IK40GN-CP/5GN12,5K 230/5060/1	GE.MOTOR.ZD 5IK40GN-CP/5GN12,5K	MOTO-RED.ZD 5IK40GN-CP/5GN12,5K	MOTORRED.ZD 5IK40GN-CP/5GN12,5K
600C	IC558910158	MR.ORIENTALS1K40GNCW2E 1:12,5 230/5060/1	GEARMOTOR ORIENTAL 51K40GNCW2E 1:12,5	GE.MOTOR ORIENTALS1K40GNCW2E 1:12,5	MOTOREDUCTEUR ORIENTALS1K40GNCW2E 1:12,5	MOTORREDUCTOR ORIENTALS1K40GNCW2E 1:12,5
600D	IC558910350	MR.TRANSTECNO CM026 1: 7,5 SX 230/50/1	GEARMOTOR TRANST. CM026 1:7,5 LINKS 230/50/1	GE.MOTOR CM026 1:7,5 LINKS 230/50/1	MOTO-REDUCT. CM026 1:7,5 GAUCHE 230/50/1	MOTORREDUCTOR CM026 1:7,5 IZQ 230/50/1
601	IC573800163	SCHEDA 1 RELÉ NA OUT AUX	ELECTRONIC BOARD-1 RELAY NA OUT AUX	ELEKTRONISCHE KARTe 1 RELAIS NA OUT AUX	CARTE ELECTRONIQUE 1 RELAIS NA OUT AUX	PLACA ELECTRÓNICA 1 RELÉ NA OUT AUX
601A	IC573800167	SCHEDA DRIVER BLD07 PER MOTORE BRUSHLESS	ELECTRONIC BOARD- DRIVER BLD07	ELEKTRONISCHE KARTe DRIVER BLD07	CARTE ELECTRONIQUE DRIVER BLD07	PLACA ELECTRÓNICA DRIVER BLD07
603	IC571201026	ALIMENTATORE ET-SW/115-230/24/3.2A/RS75	POWER SUPPLY ET-SW/115-230/24/3.2A/RS75	NETZTEIL ET-SW/115-230/24/3.2A/RS75	ALIMENTATEUR ET-SW/115-230/24/3.2A/RS75	FUENTE ALIM.ET-SW/115-230/24/3.2A/RS75
603	IC571201027	ALIMENTATORE NALIN NLB100120W1U	POWER SUPPLY NALIN NLB100120W1U	NETZTEIL NALIN NLB100120W1U	ALIMENTATEUR NALIN NLB100120W1U	ALIMENTADOR NALIN NLB100120W1U
603	IC571201034	ALIMENTATORE ABB CP-D 24/2,5 2.5A 24VCC	POWER SUPPLY ABB CP-D 24/2,5 2.5A 24VCC	NETZTEIL ABB CP-D 24/2,5 2.5A 24VCC	ALIMENTATEUR ABB CP-D 24/2,5 2.5A 24VCC	FUENTE ALIM. ABB CP-D 24/2,5 2.5A 24VCC
605	IC573700115	CENTRAL.ELETRONICA TC SOFT 256K	ELECTRONIC BOARD TC SOFT 256K	ELEKTRONISCHE STEUERKASTEN TC SOFT 256K	CENTRALE ELECTRONIQUE TC SOFT 256K	CENTRALITA ELECTRÓNICA TC SOFT 256K
605A	IC573700116	CENTRAL.ELETRONICA TC SHAKE 256K	ELECTRONIC BOARD TC SHAKE 256K	ELEKTRONISCHE STEUERKASTEN TC SHAKE 256K	CENTRALE ELECTRONIQUE TC SHAKE 256K	CENTRALITA ELECTRÓNICA TC SHAKE 256K
605D	IC573700128	CENTRAL.LONWORKS POWERLINE PL3150 USA	ELECTRONIC BOARD LONWORKS PL3150 USA	ELEKTRONISCHE STEUERKASTEN PL3150 USA	CENTRALE ELECTRONIQUE LONWORKS PL3150USA	CENTRALITA LONWORKS POWERLINE PL3150 USA
605D	IC573700145	CENTRAL.LONWORKS POWERLINE PL3150 EUR	ELECTRONIC BOARD LONWORKS PL3150 EUR	ELEKTRONISCHE STEUERKASTEN PL3150 EUR	CENTRALE ELECTRONIQUE LONWORKS PL3150EUR	CENTRALITA LONWORKS POWERLINE PL3150 EUR
607	IC572910101	SONDA ELIWELL PTC SN950201 CAVO SILIC.2m	PROBE-ELIWELL PTC SN950201 WIRE 2m	SONDE ELIWELL PTC SN950201 KABEL 2m	SONDE ELIWELL PTC SN950201 CABLE 2m	SONDA ELIWELL PTC SN950201 CABLE 2m
620	IC574400163	RESIST.ADES.RICA 24V 17W "cUL"	HEATING ELEMENT RICA 24V 17W "cUL"	KLEBE-WIDERSTAND RICA 24V 17W "cUL"	RESISTANCE ADHESIVE RICA 24V 17W "cUL"	RESISTENCIA ADHESIVA RICA 24V 17W "cUL"
630	IC155146180	ASTA 2 LIVELLI ELETRONICA COMPLETA	ROD-LEVEL ELECTRONIC CONTROL ASSEMBLY	ELEKTRON. MESSSTAB KOMPL.	JAUGE DE NIVEAU ELECTRONIQUE COMPLETE	VARILLA NIVEL ELECTRÓNICA COMPLETA
630A	IC155146340	ASTA LIVELLO CABLIATA 2M	ROD-LEVEL ELECTRONIC CONTROL ASSEMBLY	ELEKTRON. MESSSTAB KOMPL.	JAUGE DE NIVEAU ELECTRONIQUE COMPLETE	VARILLA NIVEL ELECTRÓNICA COMPLETA
708	IC576200222	FUSIBILE OMEGA ST 5X20 T 6,3A 250V	FUSE OMEGA ST 5X20 T 6,3A 250V	SCHMELZSICHERUNG OMEGA ST 5X20 T6,3A250V	FUSIBLE OMEGA ST 5X20 T 6.3A 250V	FUSIBLE OMEGA ST 5X20 T 6,3A 250V
708	IC576200227	FUSIBILE OMEGA UT 5X20 T 4A 250V	FUSE OMEGA UT 5X20 T 4A 250V	SCHMELZSICHERUNG OMEGA UT 5X20 T 4A 250V	FUSIBLE OMEGA UT 5X20 T 4A 250V	FUSIBLE OMEGA UT 5X20 T 4A 250V
708	IC576200281	FUSIBILE OMEGA BUSS KTK-R 10x38 5A 600V	FUSE OMEGA BUSS KTK-R 10x38 5A 600V	SCHMELZSICHERUNG KTK-R 10x38 5A 600V	FUSIBLE OMEGA BUSS KTK-R 10x38 5A 600V	FUSIBLE OMEGA BUSS KTK-R 10x38 5A 600V
708	IC576200288	FUSIBILE OMEGA SF 5X20 F 5A 250V	FUSE OMEGA SF 5X20 F 5A 250V	SCHMELZSICHERUNG OMEGA SF 5X20 F 5A 250V	FUSIBLE OMEGA SF 5X20 F 5A 250V	FUSIBLE OMEGA SF 5X20 F 5A 250V
708	IC576200293	FUSIBILE OMEGA ST 5X20 T 1,25A 250V	FUSE OMEGA ST 5X20 T 1,25A 250V	SCHMELZSICHERUNG ST 5X20 T 1,25A 250V	FUSIBLE OMEGA ST 5X20 T 1,25A 250V	FUSIBLE OMEGA ST 5X20 T 1,25A 250V
708	IC576200295	FUSIBILE OMEGA ST 5X20 T 630MA 250V	FUSE OMEGA ST 5X20 T 630MA 250V	SCHMELZSICHERUNG ST 5X20 T 630MA 250V	FUSIBLE OMEGA ST 5X20 T 630MA 250V	FUSIBLE OMEGA ST 5X20 T 630MA 250V
708	IC576200296	FUSIBILE OMEGA ST 5X20 T 3,15A 250V	FUSE OMEGA ST 5X20 T 3,15A 250V	SCHMELZSICHERUNG ST 5X20 T 3,15A 250V	FUSIBLE OMEGA ST 5X20 T 3,15A 250V	FUSIBLE OMEGA ST 5X20 T 3,15A 250V
726	IC155160260	PERNO ALETTA AGITATORE	PIN-SCRAPER	STIFT RÜHRERFLÜGEL	BROCHE AILETTE AGITATEUR	PERNO ALETA AGITADOR
726A	IC155170160	PERNO ATTACCO RUBINETTO	PIN-CONNECTOR	STIFT HAHNANSCHLUSS	BROCHE PRISE RUBINET	PERNO CONEXIÓN GRIFO
726B	IC155166390	PERNO COMANDO PISTONE	PIN-CONTROL PISTON	BETÄTIGUNGSSTIFT KOLBEN	BROCHE COMMANDE PISTON	PERNO MANDO PISTÓN
772	IC596110249	SPAZZOLINO DIAM.3,18 82049	FINE BRUSH DIAM.3,18 82049	SPAZZOLINO DIAM.3,18 82049	SPAZZOLINO DIAM.3,18 82049	SPAZZOLINO DIAM.3,18 82049
772	IC599100151	SCOVOLINO D. 85X145X390	BRUSH FINE DIA. 85X145X390	REINIGUNGSBÜRSTE D. 85X145X390	ECOUVILLON D. 85X145X390	ESCOBILLA D. 85X145X390
772	IC599100192	SCOVOLINO TECHNOCHEM 475x95x40	BRUSH FINE TECHNOCHEM 475x95x40	REINIGUNGSBÜRSTE TECHNOCHEM 475x95x40	ECOUVILLON TECHNOCHEM 475x95x40	ESCOBILLA TECHNOCHEM 475x95x40
772	IC599100193	SCOVOLINO TECHNOCHEM 455x100x25	BRUSH FINE TECHNOCHEM 455x100x25	REINIGUNGSBÜRSTE TECHNOCHEM 455x100x25	ECOUVILLON TECHNOCHEM 455x100x25	ESCOBILLA TECHNOCHEM 455x100x25
772	IC599100194	SCOVOLINO TECHNOCHEM 365x90x25	BRUSH FINE TECHNOCHEM 365x90x25	REINIGUNGSBÜRSTE TECHNOCHEM 365x90x25	ECOUVILLON TECHNOCHEM 365x90x25	ESCOBILLA TECHNOCHEM 365x90x25
772	IC599100195	SCOVOLINO TECHNOCHEM 1200x80x15 + 35	BRUSH FINE TECHNOCHEM 1200x80x15 + 35	REINIGUNGSBÜRSTE TECHNOCHEM 1200x80x15+35	ECOUVILLON TECHNOCHEM 1200x80x15 + 35	ESCOBILLA TECHNOCHEM 1200x80x15 + 35
772	IC599100196	SCOVOLINO TECHNOCHEM 335x85x12	BRUSH FINE TECHNOCHEM 335x85x12	REINIGUNGSBÜRSTE TECHNOCHEM 335x85x12	ECOUVILLON TECHNOCHEM 335x85x12	ESCOBILLA TECHNOCHEM 335x85x12

POS	CODE	IT	EN	DE	FR	ES
772	IC599100197	SCOVOLINO TECHNOCHEM 470x30-20x8-16	BRUSH FINE TECHNOCHEM 470x30-20x8-16	REINIGUNGSBURSTETECHNOCHEM470x30-20x8-16	ECOUVILLON TECHNOCHEM 470x30-20x8-16	ESCOBILLA TECHNOCHEM 470x30-20x8-16
772	IC599100198	SCOVOLINO TECHNOCHEM 105x30x3,5	BRUSH FINE TECHNOCHEM 105x30x3,5	REINIGUNGSBURSTE TECHNOCHEM 105x30x3,5	ECOUVILLON TECHNOCHEM 105x30x3,5	ESCOBILLA TECHNOCHEM 105x30x3,5
772	IC599100199	SCOVOLINO TECHNOCHEM 100x15x1	BRUSH FINE TECHNOCHEM 100x15x1	REINIGUNGSBURSTE TECHNOCHEM 100x15x1	ECOUVILLON TECHNOCHEM 100x15x1	ESCOBILLA TECHNOCHEM 100x15x1
772A	IC596110256	SPAZZOLINO LUNGHEZZA=38,1 CM. 82526	FINE BRUSH LENGTH =38,1 CM. 82526	SPAZZOLINO LUNGHEZZA=38,1 CM. 82526	SPAZZOLINO LUNGHEZZA=38,1 CM. 82526	SPAZZOLINO LUNGHEZZA=38,1 CM. 82526
772C	IC599100191	SET SCOVOLINI SOFT & SHAKE	KIT BRUSH FINE SOFT & SHAKE	KIT-REINIGUNGSBURSTE SOFT & SHAKE	KIT-ECOUVILLON SOFT & SHAKE	KIT-ESCOBILLA SOFT & SHAKE
775	IC592010102	CHIUSURA A CRICCHETTO MA-CO ART.0691	PUSH-LATCH MA-CO ART.0691	KLINKVERSCHLUSS MA-CO ART.0691	FERMETURE A CLIQUET MA-CO ART.0691	CIERRE DE TRINQUETE MA-CO ART.0691
779	IC102169250	SPORTELO	DOOR	TUR	PORTILLON	VENTANILLA
779A	IC102169260	SPORTELO	DOOR	TUR	PORTILLON	VENTANILLA
790	IC531300117	CINGHIA POLY V 914 J36 20N	BELT POLY V 914 J36 20N	RIEMEN POLY V 914 J36 20N	COURROIE POLY V 914 J36 20N	CORREA POLY V 914 J36 20N
790A	IC531300119	CINGHIA POLY V 960 J38 12N	BELT POLY V 960 J38 12N	RIEMEN POLY V 960 J38 12N	COURROIE POLY V 960 J38 12N	CORREA POLY V 960 J38 12N
790B	IC531501011	CINGHIA VOLTA RPN-6 D. 6 X 479	BELT VOLTA RPN-6 D. 6 X 479	RIEMEN VOLTA RPN-6 DIA. 6 X 479	COURROIE VOLTA RPN-6 D. 6 X 479	CORREA VOLTA RPN-6 D. 6 X 479
790C	IC531501012	CINGHIA VOLTA RPN-6 D. 6 X1136	BELT VOLTA RPN-6 D. 6 X1136	RIEMEN VOLTA RPN-6 DIA. 6 X1136	COURROIE VOLTA RPN-6 D. 6 X1136	CORREA VOLTA RPN-6 D. 6 X1136
790D	IC531501027	CINGHIA VOLTA RPN-6 D. 6 X 518	BELT VOLTA RPN-6 D. 6 X 518	RIEMEN VOLTA RPN-6 DIA. 6 X 518	COURROIE VOLTA RPN-6 D. 6 X 518	CORREA VOLTA RPN-6 D. 6 X 518
790E	IC531501028	CINGHIA VOLTA RPN-6 D. 6 X 869	BELT VOLTA RPN-6 D. 6 X 869	RIEMEN VOLTA RPN-6 DIA. 6 X 869	COURROIE VOLTA RPN-6 D. 6 X 869	CORREA VOLTA RPN-6 D. 6 X 869
806	IC570300215	MAGNETE IN ALNICO D.7X35	MAGNET-ALNICO DIA.7X35	MAGNET ALNICO D.7X35	ALNICO MAGNET D.7X35	ALNICO IMÁN D.7X35
806A	IC570300220	MAGNETE NEODIMIO D.6X25	MAGNET NEODYMIUM DIA.6X25	NEODYM-MAGNET D.6X25	AIMANT NEODYME D.6X25	IMÁN NEODIMIO D.6X25
830	IC596110243	LUBRIFICANTE ALIMENTARE 40179	LUBRICANT FOOD GRADE 40179 § IC743000114	LEBENSMITTELFETT 40179	LUBRIFICANT ALIMENTAIRE 40179	LUBRICANTE ALIMENTICIO 40179
830A	IC743000103	TUBETTO CARPILUBE SOFT/SHAKE g.113	TUBE-CARPILUBE SOFT/SHAKE g.113	TUBE-CARPILUBE SOFT/SHAKE g.113	TUBE CARPILUBE SOFT/SHAKE g.113	TUBO CARPILUBE SOFT/SHAKE g.113
830B	IC743000114	TUBETTO LUBRI-FILM PLUS HAYNES g.113	TUBE-LUBRI-FILM PLUS HAYNES g.113	TUBE-LUBRI-FILM PLUS HAYNES g.113	TUBE LUBRI-FILM PLUS HAYNES g.113	TUBO LUBRI-FILM PLUS HAYNES g.113
850	IC193201060	SERIE ANELLI OR KIT 193013920	O-RING SET FOR KIT 193013920	SERIE O- RINGE FÜR SATZ 193013920	SERIE JOINTS TORIQUES POUR KIT 193013920	SERIE JUNTAS OR PARA KIT 193013920
850	IC193201070	SERIE ANELLI OR KIT 193013940	O-RING SET FOR KIT 193013940	SERIE O- RINGE FÜR SATZ 193013940	SERIE JOINTS TORIQUES POUR KIT 193013940	SERIE JUNTAS OR PARA KIT 193013940
875	IC571201092	CONTROLLORE SEQ.FASI CM-PFE 208440V/5060	PHASE SEQUENCE RELAY CM-PFE 208440V/5060	PRÜFUNG DER PHASENFOLGE CM-PFE	ESSAI D'ORDRE DES PHASES CM-PFE	ENSAYO ORDEN FASES CM-PFE 208440V/5060
903	IC521111330	CUSCINETTO RIV 6206-2RS1	BEARING RIV 6206-2RS1	KUGELLAGER RIV 6206-2RS1	COUSSINET RIV 6206-2RS1	RODAMIENTO RIV 6206-2RS1
903C	IC521112201	CUSCINETTO RIV 3206 A-2RS1	BEARING RIV 3206 A-2RS1	KUGELLAGER RIV 3206 A-2RS1	COUSSINET RIV 3206 A-2RS1	RODAMIENTO RIV 3206 A-2RS1
912	IC552120270	M.CARP.MDE56B2 B14 "cUL" 230/60/1	MOTOR CARP.MDE56B2 B14 "cUL" 230/60/1	MOTOR CARP.MDE56B2 B14 "cUL" 230/60/1	MOTEUR CARP.MDE56B2 B14 "cUL" 230/60/1	MOTOR CARP.MDE56B2 B14 "cUL" 230/60/1
912A	IC551020150	M.ORIENTAL MOTOR 5IK40GN-CW2E 230/5060/1	M.ORIENTAL MOTOR 5IK40GN-CW2E 230/5060/1	M.ORIENTAL MOTOR 5IK40GN-CW2E 230/5060/1	M.ORIENTAL MOTOR 5IK40GN-CW2E 230/5060/1	M.ORIENTAL MOTOR 5IK40GN-CW2E 230/5060/1
912B	IC558300100	MR.CROUZET 80813006 24V C.C.	GEARMOTOR CROUZET 80813006 24V C.C.	GE.MOTOR CROUZET 80813006 24V C.C.	MOTO-REDUCTEUR CROUZET 80813006 24V C.C.	MOTORRED.CROUZET 80813006 24V C.C.
920	IC155145960	SENSORE LIVELLO BICCHIERE AMPLIFICATO	SENSOR-LEVEL GLASS	FULLSTANDSSENSOR BECHER	CAPTEUR NIVEAU GOBELET	SENSOR NIVEL VASO
920A	IC572910189	FOTOCELLULA MICRODETECTORS FAR2/BN-0ADA	PHOTOELECTRIC CELL-FAR2/BN-0ADA	FOTOEZELLE MICRODETECTORS FAR2/BN-0ADA	CELLULE PHOTOELECTRIQUE FAR2/BN-0ADA	FOTOCÉLULA MICRODETECTORS FAR2/BN-0ADA
920B	IC572910161	SENSORE LIVELLO IR MOD.446M5	SENSOR-LEVEL IR MOD.446M5	FULLSTANDSSENSOR IR MOD.446M5	CAPTEUR NIVEAU IR MOD.446M5	SENSOR NIVEL IR MOD.446M5
920C	IC572910177	SENSORE INDUTTIVO DIELL AM1-AN-2A	SENSOR-PROXIMITY DIELL AM1-AN-2A	NAHERUNGSSCHALTER DIELL AM1-AN-2A	DETECTEUR DE PROXIMITÉ DIELL AM1-AN-2A	SENSOR DE PROXIMIDAD DIELL AM1-AN-2A
921	IC572910146	SONDA DRY REED STEM A061 1V VDE	SWITCH-DRY REED STEM A061 1V VDE	DRY REED- SONDE STEM A061 1V VDE	SONDE DRY REED STEM A061 1V VDE	SONDA DRY REED STEM A061 1V VDE
921	IC572910148	SONDA DRY REED STEM A061 AB 2P	SWITCH-DRY REED STEM A061 AB 2P	DRY REED- SONDE STEM A061 AB 2P	SONDE DRY REED STEM A061 AB 2P	SONDA DRY REED STEM A061 AB 2P
921A	IC572910147	SONDA DRY REED STEM E510 2B VDE	SWITCH-DRY REED STEM E510 2B VDE	DRY REED-SONDE STEM E510 2B VDE	SONDE DRY REED STEM E510 2B VDE	SONDA DRY REED STEM E510 2B VDE
921A	IC572910149	SONDA DRY REED STEM E510 ZB OE	SWITCH-DRY REED STEM E510 ZB OE	DRY REED-SONDE STEM E510 ZB OE	SONDE DRY REED STEM E510 ZB OE	SONDA DRY REED STEM E510 ZB OE
930	IC107166100	SUPPORTO MOTORIDUTTORE POMPA	SUPPORT-GEARMOTOR PUMP	HALTERUNG GETRIEBEMOTOR PUMPE	SUPPORT MOTOREDUCTEUR POMPE	SOPORTE MOTORREDUCTOR BOMBA
930A	IC107156200	SUPPORTO COPERCHIO VASCA	SUPPORT-COVER TANK	HALTERUNG BEHÄLTERDECKEL	SUPPORT COUVERCLE CÙVE	SOPORTE TAPA CUBA
930B	IC107156890	SUPPORTO SACCHETTI SCIROPPI	SUPPORT-BAG SYRUPS	HALTERUNG SIRUPBEUTEL	SUPPORT SACS SIROPS	SOPORTE SACOS JARABES
944	IC596110203	SFERA 1/2"06022	BALL-1/2"06022	KUGEL 1/2"06022	SPHERE 1/2"06022	ESFERA 1/2"06022
996	IC157080330	MOVIMENTO POSTERIORE CONDOTTO COMPLETO	ASSEMBLY SHAFT DRIVE	GETRIEBENE NABE KPL.	DEPLAC.ARR.CONDUIT COMPLET	MOVIMIENTO TRASERO CONDUCIDO COMPLETO
996A	IC157080340	MOVIMENTO POSTERIORE CONDOTTO COMPLETO	ASSEMBLY SHAFT DRIVE	GETRIEBENE NABE KPL.	DEPLAC.ARR.CONDUIT COMPLET	MOVIMIENTO TRASERO CONDUCIDO COMPLETO
999	IC157090330	MOZZO CONDOTTO COMPLETO	HUB DRIVEN COMPLETE	GETRIEBENE NABE KPL.	MOYEU CONDUIT COMPLET K3	CUBO CONDUCIDO COMPLETO
999A	IC157090340	MOZZO CONDOTTO COMPLETO	HUB DRIVEN COMPLETE	GETRIEBENE NABE KPL.	MOYEU CONDUIT COMPLET	CUBO CONDUCIDO COMPLETO



**CARPIGIANI**

Via Emilia, 45

40011 Anzola dell'Emilia (BO) Italy

+39 051 6505111

 +39 051 732178

 <http://www.carpigiani.com>