

# Service Manual

Convotherm Gas 10.20

CONVOTHERM BY CLEVELAND

---

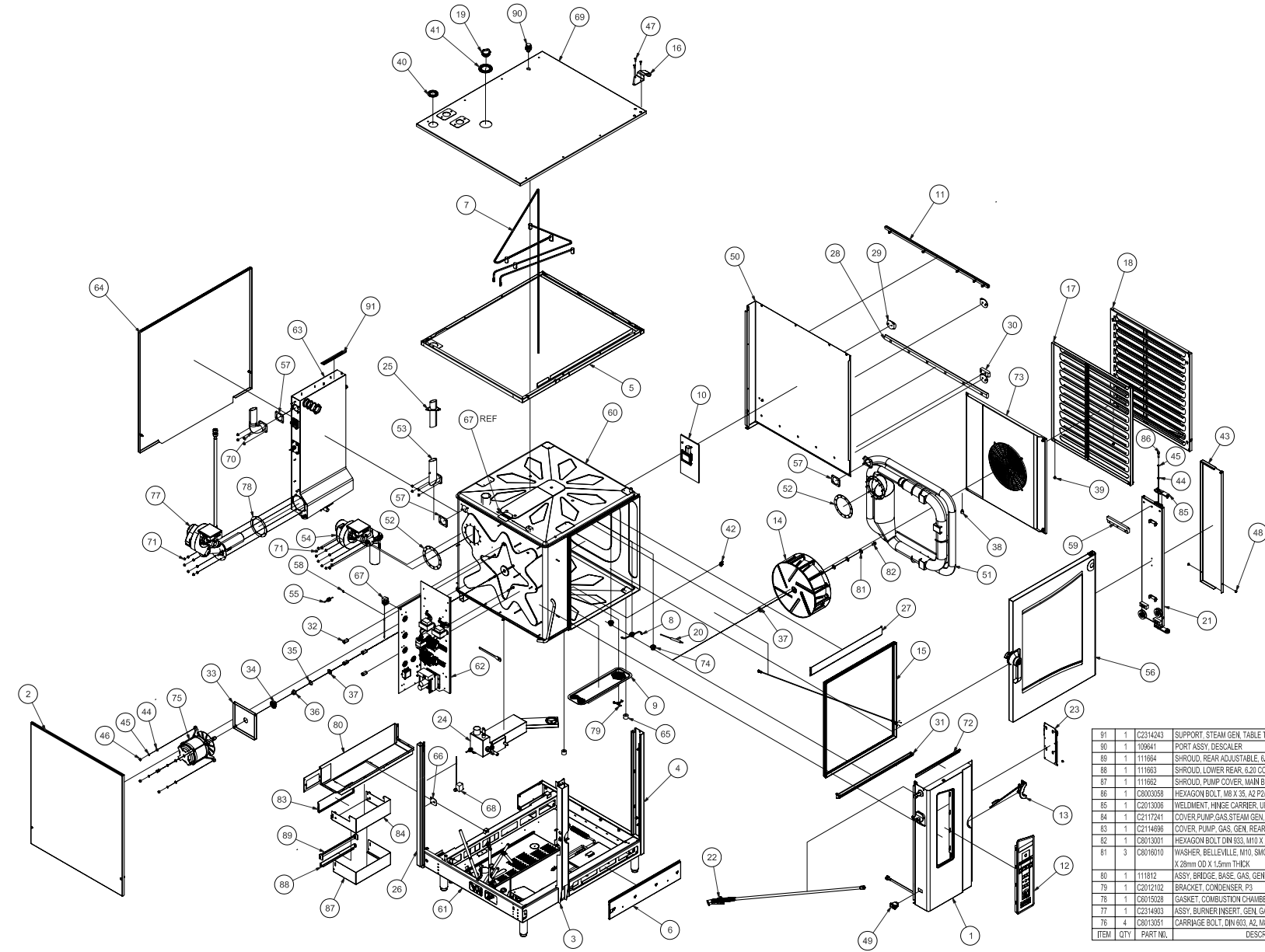


---

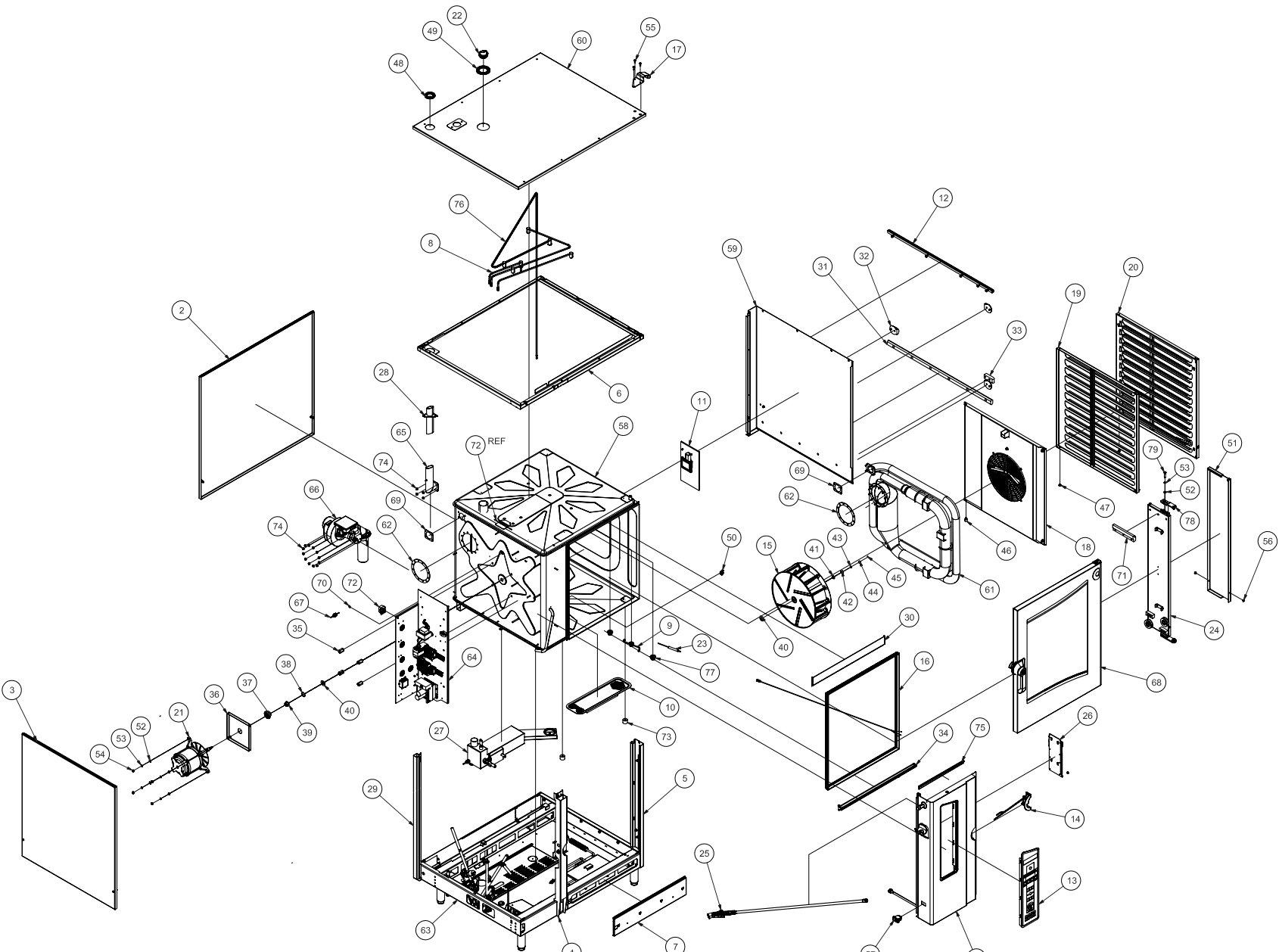
1333 East 179<sup>th</sup> Street  
Cleveland, Ohio 44110

Phone: (216) 481-4900  
Fax: (216) 481-3782  
[www.clevelandrange.com](http://www.clevelandrange.com)

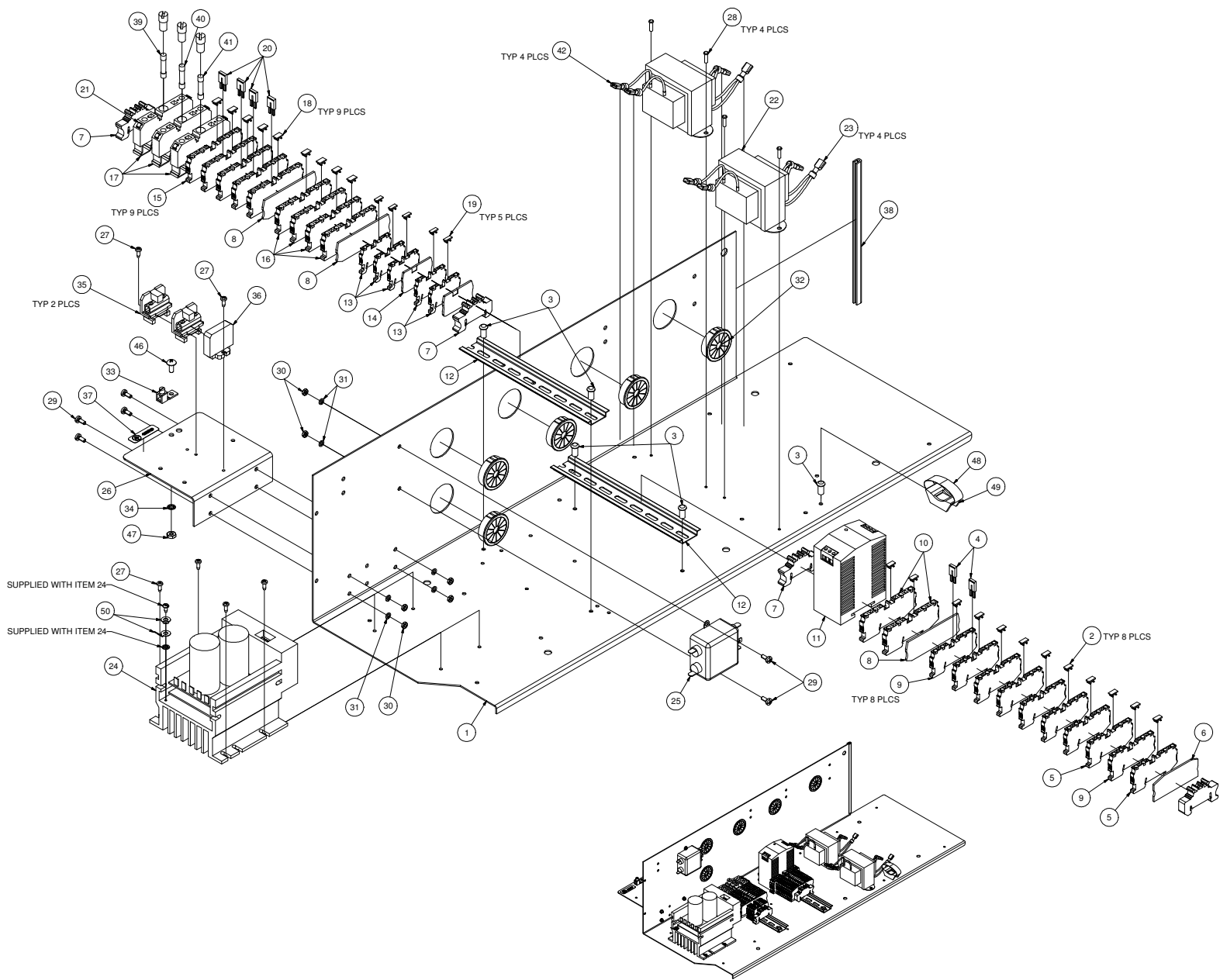
 Cleveland



|    |    |           |  |      |     |          |             |
|----|----|-----------|--|------|-----|----------|-------------|
| 75 | 1  | C5018014  | MOTOR, 3-PHASE, 208-240V 60HZ, 200V 50HZ, 4/8 POLE, 0.9KW, GAS COMBI P3                                  | ITEM | QTY | PART NO. | DESCRIPTION |
| 74 | 2  | C2611010  | ASSEMBLY, SPRINKLER NOZZLE, P3   | ITEM | QTY | PART NO. | DESCRIPTION |
| 73 | 1  | C214144   | ASSEMBLY, INTAKE PANEL, GEN, 10,20 P3  | ITEM | QTY | PART NO. | DESCRIPTION |
| 72 | 1  | C2115376  | WELDMENT, CHIMNEY, FRONT, 6,20/10,20 P3  | ITEM | QTY | PART NO. | DESCRIPTION |
| 71 | 28 | C8017011  | NUT, FLANGE, HEX, M6 A4 P3   | ITEM | QTY | PART NO. | DESCRIPTION |
| 70 | 1  | C2010774  | WELDMENT, FLUE, STEAM GENERATOR, GAS, 10,20/12,20, P3  | ITEM | QTY | PART NO. | DESCRIPTION |
| 69 | 1  | C2115464  | ASSEMBLY, TOP PANEL, GAS, GEN, 10,20 P3  | ITEM | QTY | PART NO. | DESCRIPTION |
| 68 | 1  | 1189962   | HAL MIT RESET SWITCH (140° C)  | ITEM | QTY | PART NO. | DESCRIPTION |
| 67 | 1  | C5011041  | SAFETY TEMPERATURE LIMITER, 340°C  | ITEM | QTY | PART NO. | DESCRIPTION |
| 66 | 1  | C2114768  | BRACKET, HIGH LIMIT, STEAM GENERATOR, P3   | ITEM | QTY | PART NO. | DESCRIPTION |
| 65 | 2  | C8015209  | BUSHING, Ø 30 X 23, M6, P3   | ITEM | QTY | PART NO. | DESCRIPTION |
| 64 | 1  | C2114764  | ASSEMBLY, PANEL, REAR, GAS, GEN, 10,20 P3  | ITEM | QTY | PART NO. | DESCRIPTION |
| 63 | 1  | C2314883  | GEN, GAS, PRE-MOUNTED, 10,20/20,10/20,20, P3   | ITEM | QTY | PART NO. | DESCRIPTION |
| 62 | 1  | 300613    | INSTRUCTION, ASSEMBLY, COMPONENT PANEL, COB 10,20/12,20  | ITEM | QTY | PART NO. | DESCRIPTION |
| 61 | 1  | C21145475 | ASSEMBLY, BASE, GAS, GENERATOR, WITH CLEANING SYSTEM, 10,20 P3   | ITEM | QTY | PART NO. | DESCRIPTION |
| 60 | 1  | C2215258  | WELDMENT, INNER HOUSING 10,20, GAS, GEN, REI   | ITEM | QTY | PART NO. | DESCRIPTION |
| 59 | 1  | C8012008  | SUPPORT STRIP VST P3   | ITEM | QTY | PART NO. | DESCRIPTION |
| 58 | 1  | C8005260  | SEAL, THERMOCOUPLE SENSOR, OSCOSP P2   | ITEM | QTY | PART NO. | DESCRIPTION |
| 57 | 3  | C8015027  | SEAL, Ø50 MM, FLUE P3  | ITEM | QTY | PART NO. | DESCRIPTION |
| 56 | 1  | C2514553  | DOOR, 10,20 COMPLETE P3  | ITEM | QTY | PART NO. | DESCRIPTION |
| 55 | 1  | C5018008  | THERMOCOUPLE, SENSOR, OSCOSP, 64,807 (165MM)   | ITEM | QTY | PART NO. | DESCRIPTION |
| 54 | 1  | C2614863  | BURNER INSERT, HOT AIR, 110V, 10,20/12,20/20,20, NAT   | ITEM | QTY | PART NO. | DESCRIPTION |
| 53 | 1  | 1112529   | ASSEMBLY, FLUE WITH STD, 10,20/20,20, P3   | ITEM | QTY | PART NO. | DESCRIPTION |
| 52 | 2  | C8015029  | GASKET, HEAT EXCHANGER 10,20/12,20/20,02   | ITEM | QTY | PART NO. | DESCRIPTION |
| 51 | 1  | C2010116  | WELDMENT, HEAT EXCHANGER 10,20/12,20/20,20   | ITEM | QTY | PART NO. | DESCRIPTION |
| 50 | 1  | C2115484  | ASSEMBLY, PANEL, RIGHT SIDE, 10,20 P3  | ITEM | QTY | PART NO. | DESCRIPTION |
| 49 | 1  | 119993    | SWITCH, ROCKER, DPDT, ON/OFF 15A, 125V   | ITEM | QTY | PART NO. | DESCRIPTION |
| 48 | 2  | C8015000  | MLF SCREW, M8X 42 P3   | ITEM | QTY | PART NO. | DESCRIPTION |
| 47 | 3  | C8003032  | SCREW, MLF, M6 X 20, A2  | ITEM | QTY | PART NO. | DESCRIPTION |
| 46 | 4  | C8004057  | NUT, HEX, M6 A4  | ITEM | QTY | PART NO. | DESCRIPTION |
| 45 | 5  | C8006060  | SCHNORR LOCK WASHER, S8, A2, P3  | ITEM | QTY | PART NO. | DESCRIPTION |
| 44 | 5  | C8005050  | WASHER, 8,4 A2 DIN 125 P3  | ITEM | QTY | PART NO. | DESCRIPTION |
| 43 | 1  | C2114817  | COVER PANEL VST 10,10/10,20  | ITEM | QTY | PART NO. | DESCRIPTION |
| 42 | 1  | C2016009  | COVER, BYPASS, P3  | ITEM | QTY | PART NO. | DESCRIPTION |
| 41 | 1  | C8005427  | DIAPHRAGM GROMMET Ø83 (D68) FOR VAC, REG, VALVE  | ITEM | QTY | PART NO. | DESCRIPTION |
| 40 | 1  | C8005548  | DIAPHRAGM GROMMET Ø 80 mm (DG 48) P3   | ITEM | QTY | PART NO. | DESCRIPTION |
| 39 | 2  | C8015241  | SUPPORT PIN, HANGING RACK, P3  | ITEM | QTY | PART NO. | DESCRIPTION |
| 38 | 1  | C8015212  | SUPPORT PIN, INTAKE PANEL P3   | ITEM | QTY | PART NO. | DESCRIPTION |
| 37 | 2  | C8015024  | SEALING RING, MOTOR SHAFT, VITON, COMBI P3   | ITEM | QTY | PART NO. | DESCRIPTION |
| 36 | 1  | C8015206  | BUSHING, LABYRINTH P3  | ITEM | QTY | PART NO. | DESCRIPTION |
| 35 | 1  | C8015210  | SHIM, WEARING MOTOR SHAFT SEAL P3  | ITEM | QTY | PART NO. | DESCRIPTION |
| 34 | 1  | C8015050  | SPRING, MOTOR SHAFT SEAL P3  | ITEM | QTY | PART NO. | DESCRIPTION |
| 33 | 1  | C2114140  | MOTOR MOUNTING PLATE   | ITEM | QTY | PART NO. | DESCRIPTION |
| 32 | 4  | C8015213  | SPACER BUSHING, MOTOR 33mm   | ITEM | QTY | PART NO. | DESCRIPTION |
| 31 | 1  | C2018001  | DRIP PAN 6,20/10,20 P3   | ITEM | QTY | PART NO. | DESCRIPTION |
| 30 | 1  | C8012009  | GUIDE STRIP, LOWER VST P3  | ITEM | QTY | PART NO. | DESCRIPTION |
| 29 | 3  | C8012011  | DOOR STOPPER VA VST P3   | ITEM | QTY | PART NO. | DESCRIPTION |
| 28 | 1  | C2017000  | GUIDE RAIL, VST X,20 P3  | ITEM | QTY | PART NO. | DESCRIPTION |
| 27 | 1  | C2114732  | FACEPLATE, UPPER X,20 P3   | ITEM | QTY | PART NO. | DESCRIPTION |
| 26 | 1  | C2114634  | CORNER, WELDED, REAR, LEFT, 10,10/10,20 P3   | ITEM | QTY | PART NO. | DESCRIPTION |
| 25 | 1  | C2114292  | AIR OUTLET CONNECTING PIECE 20,20 GEN, 6,20/10,10/20,20,NL   | ITEM | QTY | PART NO. | DESCRIPTION |
| 24 | 1  | C2012106  | ASSEMBLY, CONDENSER, COUNTERTOP UNIT, P3   | ITEM | QTY | PART NO. | DESCRIPTION |
| 23 | 1  | C2614266  | ASSEMBLY, CONTROLLER, ELECTRIC, P3   | ITEM | QTY | PART NO. | DESCRIPTION |
| 22 | 1  | C22188091 | ASSEMBLY, HAND SHOWER, 10,10/10,20, P3   | ITEM | QTY | PART NO. | DESCRIPTION |
| 21 | 1  | C2614802  | ASSEMBLY, SLIDING PLATE VST 10,10/10,20 P3   | ITEM | QTY | PART NO. | DESCRIPTION |
| 20 | 1  | C2614263  | ASSEMBLY, CORE TEMPERATURE SENSOR, P3  | ITEM | QTY | PART NO. | DESCRIPTION |
| 19 | 1  | C2688962  | ASSEMBLY, NEGATIVE PRESSURE SAFETY VENT  | ITEM | QTY | PART NO. | DESCRIPTION |
| 18 | 1  | C2241193  | WELDMENT, RACK PAN, RIGHT, 10,20, P3   | ITEM | QTY | PART NO. | DESCRIPTION |
| 17 | 1  | C2241192  | WELDMENT, RACK PAN, LEFT, 10,20, P3  | ITEM | QTY | PART NO. | DESCRIPTION |
| 16 | 1  | C2614740  | ASSEMBLY, GUIDE CLIP, VST, COUNTERTOP MODEL, P3  | ITEM | QTY | PART NO. | DESCRIPTION |
| 15 | 1  | C7011005  | DOOR SEAL, 10,20, P3   | ITEM | QTY | PART NO. | DESCRIPTION |
| 14 | 1  | C8010003  | WHEEL, BLOWER, 405mm OD X 150mm WIDE, TYPE 304 SST, PRECISION DEARED HUB, 10,20, 12,20, & 20,20 COMBI P3 | ITEM | QTY | PART NO. | DESCRIPTION |
| 13 | 1  | C8012001  | ASSEMBLY, DOOR LATCH, P3   | ITEM | QTY | PART NO. | DESCRIPTION |
| 12 | 1  | C21142963 | ASSY, CONTROL PANEL, SPRITZER, WITH PICTO  | ITEM | QTY | PART NO. | DESCRIPTION |
| 11 | 1  | C2114690  | ASSEMBLY, SLIDE BAR, DISAPPEARING DOOR, X,20 P3  | ITEM | QTY | PART NO. | DESCRIPTION |
| 10 | 1  | C2614841  | ASSEMBLY, CAVITY LIGHT, P3   | ITEM | QTY | PART NO. | DESCRIPTION |
| 9  | 1  | C2216706  | ASSEMBLY, COVER, DEHUMIDIFYING GUTTER, P3  | ITEM | QTY | PART NO. | DESCRIPTION |
| 8  | 1  | C2611068  | ASSEMBLY, ROTOR NOZZLE, P2, P3   | ITEM | QTY | PART NO. | DESCRIPTION |
| 7  | 1  | C26144883 | INSTRUCTION, CLEANING SYSTEM, COMBI  | ITEM | QTY | PART NO. | DESCRIPTION |
| 6  | 1  | C2114453  | WELDMENT, FACEPLATE, LOWER, 6,20/10,20 P3  | ITEM | QTY | PART NO. | DESCRIPTION |
| 5  | 1  | C2114826  | ASSEMBLY, WELDMENT, INTERMEDIATE TOP, 6,20/10,20 P3  | ITEM | QTY | PART NO. | DESCRIPTION |
| 4  | 1  | C2012102  | BRACKET, CONDENSER, P3   | ITEM | QTY | PART NO. | DESCRIPTION |
| 3  | 1  | C8016028  | GASKET, COMBUSTION CHAMBER, 6,10/6,20/10,10/20,10  | ITEM | QTY | PART NO. | DESCRIPTION |
| 2  | 1  | C2114303  | ASSY, BURNER INSERT, GEN, GAS, 10,20/12,20/20,16/20,20, NAT  | ITEM | QTY | PART NO. | DESCRIPTION |
| 1  | 1  | C8013051  | CARRIAGE BOLT, DIN 603, A2, M8x80  | ITEM | QTY | PART NO. | DESCRIPTION |



|      |     |            |  |
|------|-----|------------|--|
| 65   | 1   | 112529     | ASSEMBLY, FLUE WITH STUD, 10,20/20,20, P3  |
| 64   | 1   | 300614     | INSTRUCTION ASSEMBLY, COMPONENT PANEL, OGS 10,20/12,20   |
| 63   | 1   | C21145375  | ASSEMBLY, BASE, GAS, INJECTOR, WITH CLEANING SYSTEM, 10,20 P3  |
| 62   | 2   | C8015029   | GASKET, HEAT EXCHANGER 10,20/12,20/20,02   |
| 61   | 1   | C2010016   | WELDMENT, HEAT EXCHANGER 10,20/12,20/20,20   |
| 60   | 1   | C2115454   | ASSEMBLY, TOP PANEL, GAS INJ, 10,20 P3   |
| 59   | 1   | C2115484   | ASSEMBLY, PANEL, RIGHT SIDE, 10,20 P3  |
| 58   | 1   | C2219507   | WELDMENT, INNER HOUSING 10,20, GAS, INJ, REI   |
| 57   | 1   | 19989      | SWITCH, ROCKER, DPDT, ON/OFF 15A, 125V   |
| 56   | 2   | C8015000   | M/F SCREW M6X8 A2 P3   |
| 55   | 3   | C8003032   | SCREW, M/F, M6 X 20, A2  |
| 54   | 4   | C8004057   | NUT, HEX, M6 M4  |
| 53   | 5   | C8005060   | SCREW/LOCK WASHER, SS, A2, P3  |
| 52   | 5   | C8005050   | WASHER, 8,4 A2 DIN 125 P3  |
| 51   | 1   | C2114817   | COVER PANEL, VST 10,10/10,20   |
| 50   | 1   | C2018009   | COVER, BYPASS, P3  |
| 49   | 1   | C2005427   | DIAPHRAGM GROMMET Ø83 (DG80) FOR VAC, REG. VALVE   |
| 48   | 1   | C2005048   | DIAPHRAGM GROMMET Ø 80 mm (DG 48) P3   |
| 47   | 2   | C8015241   | SUPPORT PIN, HANGING RACK, P3  |
| 46   | 1   | C8015212   | SUPPORT PIN, INTAKE PANEL, P3  |
| 45   | 1   | 111543     | RING, RETAINING, EXTERNAL, 1/4", STAINLESS STEEL, WAJDES #5100-25H                                       |
| 44   | 1   | 111541     | NUT, HEX, LEFT-HAND, M8 X 1,25 (DIN 934L), STAINLESS STEEL   |
| 43   | 1   | 111542     | WASHER, BELLEVILLE, M8, SERRATED BOTH SIDES, SST, 8,4mm ID X 13mm OD X 0,8mm THICK                       |
| 42   | 1   | 111540     | NUT, HEX, M10 X 1,5 (DIN 934), STAINLESS STEEL   |
| 41   | 1   | 111544     | WASHER, BELLEVILLE, M10, SMOOTH, TYPE 301 SST, 10,21mm ID X 24mm OD X 1,85mm THICK                       |
| 40   | 2   | C8015021   | SEALING RING, MOTOR SHAFT, VITON, COMBI P3   |
| 39   | 1   | C8015026   | BUSHING, LABYRINTH P3  |
| 38   | 1   | C8015210   | SHIM, WEARING MOTOR SHAFT SEAL P3  |
| 37   | 1   | C8015050   | SPRING, MOTOR SHAFT SEAL P3  |
| 36   | 1   | C2114140   | MOTOR MOUNTING PLATE   |
| 35   | 4   | C8015213   | SPACER BUSHING, MOTOR 33mm   |
| 34   | 1   | C8018001   | DRIP PAN 6,20/10,20 P3   |
| 33   | 1   | C8012009   | GUIDE STRIP, LOWER VST P3  |
| 32   | 3   | C8012011   | DOOR STOPPER VA VST P3   |
| 31   | 1   | C2017000   | GUIDE RAIL VST X,20 P3   |
| 30   | 1   | C2114732   | FACEPLATE, UPPER X,20 P3   |
| 29   | 1   | C2114634   | CORNER, WELDED, REAR, LEFT, 10,10/10,20 P3   |
| 28   | 1   | C2114292   | AIR OUTLET CONNECTING PIECE 20,20 GEN. 6,20/10,10/20,20 INJ.   |
| 27   | 1   | C2012106   | ASSEMBLY, CONDENSER, COUNTERTOP UNIT, P3   |
| 26   | 1   | C2614266   | ASSEMBLY, CONTROLLER, ELECTRIC, P3   |
| 25   | 1   | C22169801  | ASSEMBLY, HAND SHOWER, 10,10/10,20, P3   |
| 24   | 1   | C2614802   | ASSEMBLY, SLIDING PLATE VST 10,10/10,20 P3   |
| 23   | 1   | C2614263   | ASSEMBLY, CORE TEMPERATURE SENSOR, P3  |
| 22   | 1   | C2608962   | ASSEMBLY, NEGATIVE PRESSURE SAFETY VENT  |
| 21   | 1   | C50180031  | MOTOR W/STUD, 380-480V 60HZ, 380+15V 50HZ, 3-PHASE, 4/8 POLE, 0,9kW, ELECT. COMBI P3                     |
| 20   | 1   | C2214193   | WELDMENT, RACK, PAN, RIGHT, 10,20, P3  |
| 19   | 1   | C2214192   | WELDMENT, RACK, PAN, LEFT, 10,20, P3   |
| 18   | 1   | C2214154   | ASSEMBLY, PLATE, INTAKE PANEL, INJECTOR, 10,20 P3  |
| 17   | 1   | C2614740   | ASSEMBLY, GUIDE CLIP, VST, COUNTERTOP MODEL, P3  |
| 16   | 1   | C7011005   | DOOR SEAL, 10,20, P3   |
| 15   | 1   | C8010003   | WHEEL, BLOWER, 405mm OD X 150mm WIDE, TYPE 304 SST, PRECISION REAMED HUB, 10,20, 12,20, & 20,20 COMBI P3 |
| 14   | 1   | C8012001   | ASSEMBLY, DOOR LATCH, P3   |
| 13   | 1   | C2114266-3 | ASSY, CONTROL PANEL, SPRITZER, WITH PICTO  |
| 12   | 1   | C2114860   | ASSEMBLY, SLIDE BAR, DISAPPEARING DOOR, X,20 P3  |
| 11   | 1   | C2614841   | ASSEMBLY, CAVITY LIGHT, P3   |
| 10   | 1   | C2216796   | ASSEMBLY, COVER, DEHUMIDIFYING GUTTER, P3  |
| 9    | 1   | C2611088   | ASSEMBLY, ROTOR NOZZLE, P2, P3   |
| 8    | 1   | C2218031   | ASSEMBLY, INJECTOR, 6,20/10,20/12,20 P3  |
| 7    | 1   | C2114463   | WELDMENT, FACEPLATE, LOWER, 6,20/10,20 P3  |
| 6    | 1   | C2114826   | ASSEMBLY WELDMENT, INTERMEDIATE TOP, 6,20/10,20 P3   |
| 5    | 1   | C2115490   | ASSEMBLY, CORNER, FRONT, RIGHT, 10,10/10,20 P3   |
| 4    | 1   | C2114719   | WELDMENT, REINFORCEMENT, DOOR LATCH, 10,10/10,20 P3  |
| 3    | 1   | C2514353   | DOOR 10,20 COMPLETE P3   |
| 2    | 1   | C5018006   | THERMOCOUPLE, SENSOR, CSC/CSP 64,961" (1650MM)   |
| 1    | 1   | C2614863   | BURNER INSERT, HOT AIR, 110V, 10,20/12,20/20,20, NAT   |
| 79   | 1   | C8003056   | HEXAGON BOLT, M8 X 35, A2 P2/P3  |
| 78   | 1   | C2013006   | WELDMENT, HINGE CARRIER, UPPER, DOOR P3  |
| 77   | 2   | C2611010   | ASSEMBLY, SPRINKLER NOZZLE, P3   |
| 76   | 1   | C26144883  | INSTRUCTION, CLEANING SYSTEM, COMBI  |
| 75   | 1   | C2115376   | WELDMENT, CHANNEL, FRONT, 6,20/10,20 P3  |
| 74   | 16  | C8017011   | NUT, FLANGE, HEX M6 M4 P3  |
| 73   | 2   | C8015209   | BUSHING, Ø 30 X 23, M6, P3   |
| 72   | 1   | C5001041   | SAFETY TEMPERATURE LIMITER, 340°C  |
| 71   | 1   | C8012008   | SUPPORT STRIP VST P3   |
| 70   | 1   | C8005260   | SEAL, THERMOCOUPLE SENSOR, CSC/CSP P2  |
| 69   | 2   | C8015027   | SEAL, Ø50 MM, FLUE P3  |
| 68   | 1   | C2514353   | DOOR 10,20 COMPLETE P3   |
| 67   | 1   | C5018006   | THERMOCOUPLE, SENSOR, CSC/CSP 64,961" (1650MM)   |
| 66   | 1   | C2614863   | BURNER INSERT, HOT AIR, 110V, 10,20/12,20/20,20, NAT   |
| ITEM | QTY | PART NO.   | DESCRIPTION  |
| ITEM | QTY | PART NO.   | DESCRIPTION  |

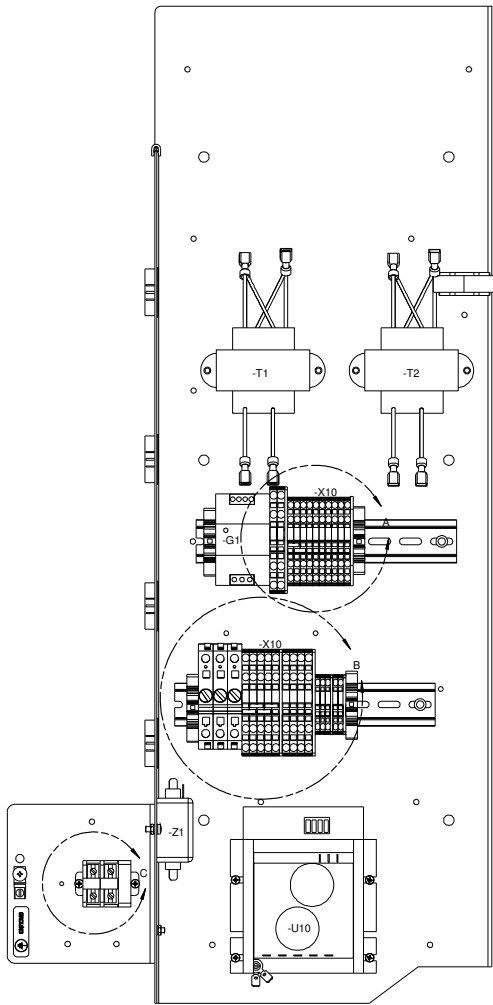


| ITEM | QTY | PART NO.  | DESCRIPTION   |   |
|------|-----|-----------|---|---|
| 50   | 2   | 20323     | RING TO MALE TAB TERMINAL                               |   |
| 49   | 1   | 119856    | MOUNT CABLE TIE   |   |
| 48   | 1   | 119855    | CABLE TIE, (TAK-TY)                                     |   |
| 47   | 1   | 14859     | NUT, HEX #10-24, SST                                    |   |
| 46   | 1   | 101231    | SCREW, 10-24 X 0.500 SST, PHILLIPS TRUSS HEAD           |   |
| 45   | 1   | 300633    | WIRING DIAGRAM, OGB 10.20/12.20                         |   |
| *    | 44  | 20451     | CABLE TIE   |   |
| *    | 43  | 300617    | HARNESS, MAIN, OGB 10.20/12.20                          |   |
| 42   | 4   | 20370     | TERM. FULL INSUL, MALE, 0.250 TAB                       |   |
| 41   | 1   | 300471    | FUSE, 20 AMP, MDA                                       |   |
| 40   | 1   | 300418    | FUSE, MDA-1   |   |
| 39   | 1   | 300752    | FUSE, MDA-3   |   |
| 38   | 1   | C70016608 | EDGE GUARD 8.0" LONG                                    |   |
| 37   | 1   | 14897     | LABEL, GROUP  |   |
| □    | 36  | 1         | 101540  | END SEGMENT, SECTIONAL TERMINAL BLOCK, 85 AMP |
| 35   | 2   | 101541    | BLOCK, TERMINAL SECTION, 85 AMPERE BOX TYPE             |   |
| 34   | 1   | 23114     | WASHER, LOCK, INTRNL, TOOTH #10 TYPE A OR B, SST        |   |
| 33   | 1   | 20304     | LUIG, GROUND  |   |
| 32   | 5   | 111751    | BUSHING, UNIVERSAL, 1.5DIA HOLE, HEYCO#2213, SNAP-IN UL |   |
| 31   | 6   | 111696    | MALOCK, WASHER  |   |
| 30   | 6   | 111695    | M4 NUT  |   |
| 29   | 6   | C8001024  | SCREW, FILISTER HD, M4X10 DIN 7985                      |   |
| 28   | 4   | 106127    | SCREW, 8-32 X 1/2, TORX/SLT PAN HD                      |   |
| 27   | 6   | 106126    | SCREW, 8-32 X 1/2, TORX/SLT PAN HD                      |   |
| 26   | 1   | 112131    | BRACKET, MOUNTING, TERMINAL BLOCK                       |   |
| 25   | 1   | 300472    | FILTER, LINE, 20A                                       |   |
| 24   | 1   | 300482    | AC MOTOR DRIVE, 4 AMP                                   |   |
| 23   | 4   | 300231    | TERM. FULL INSUL, FEMALE, 0.250 TAB                     |   |
| 22   | 2   | 300419    | TRANSFORMER, 24V  |   |
| 21   | 6   | C4014039  | LABEL BLANK, TERMINAL BLOCK, ZBF6                       |   |
| 20   | 4   | C4014021  | JUMPER, 2 PIN   |   |
| 19   | 5   | C4014033  | LABEL BLANK, TERMINAL BLOCK, ZB4                        |   |
| 18   | 9   | C4014044  | LABEL BLANK, TERMINAL BLOCK, ZB6                        |   |
| 17   | 3   | C4014037  | DIRNRL MOUNTED FUSEHOLDER (6.5X32)                      |   |
| 16   | 4   | C4014006  | TERMINAL BLOCK, CONDUCTOR, SPRING LOADED                |   |
| 15   | 5   | C4014012  | TERMINAL BLOCK, SPRING LOADED, FOUR WIRE, BLUE          |   |
| 14   | 2   | C4014031  | COVER 2.5 MM2   |   |
| 13   | 5   | C4014030  | TERMINAL BLOCK, SPRING LOADED, 1.5MM2                   |   |
| 12   | 2   | 111760    | DIN RAIL, 8.375"  |   |
| 11   | 1   | 300359    | POWER SUPPLY (12V)                                      |   |
| 10   | 2   | C4014013  | TERMINAL BLOCK, SPRING LOADED, FOUR WIRE                |   |
| 9    | 8   | C4014010  | TERMINAL, SPRING LOADED, FOUR WIRE, 2.5 MM2             |   |
| 8    | 3   | C4014011  | COVER, FOUR WIRE  |   |
| 7    | 4   | C4014000  | SNAP-ON END BRACKET                                     |   |
| 6    | 1   | C4014008  | COVER FOUR WIRE 2.5 MM2                                 |   |
| 5    | 2   | C4014009  | TERMINAL BLOCK, SPRING LOADED, 2.5 MM2, BLUE            |   |
| 4    | 2   | C4014002  | JUMPER 2-PIN  |   |
| 3    | 5   | 106123    | SCREW, 10-32 X 1/2, TORX/PAN HD, THRD FORMING, ZN       |   |
| 2    | 12  | C4014032  | SCREWED COVER STRIP, PLAIN, ZB5                         |   |
| 1    | 1   | 112107    | PANEL, ELECTRICAL COMPONENT 10.20/12.20 P3              |   |
| ITEM | QTY | PART NO.  | DESCRIPTION   |   |

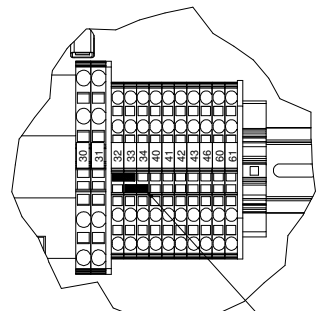
\* = NOT SHOWN  
□ = REFERENCE

NOTES:  
 1) LABEL ALL COMPONENTS AS SHOWN USING FELT TIP PERMANENT MARKER.

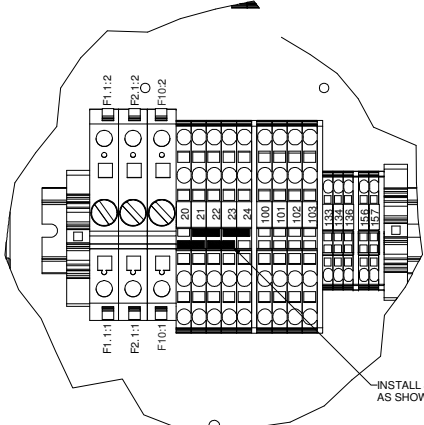
| LET. | DESCRIPTION      | DATE | BY |
|------|------------------|------|----|
|      | SEE SHEET 1 OF 2 |      |    |



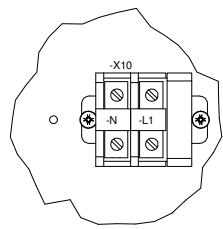
LABEL VIEW



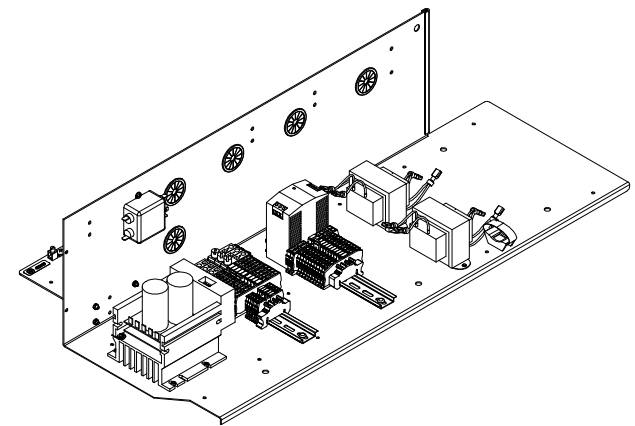
DETAIL A  
 INSTALL JUMPERS AS SHOWN



DETAIL B  
 INSTALL JUMPERS AS SHOWN

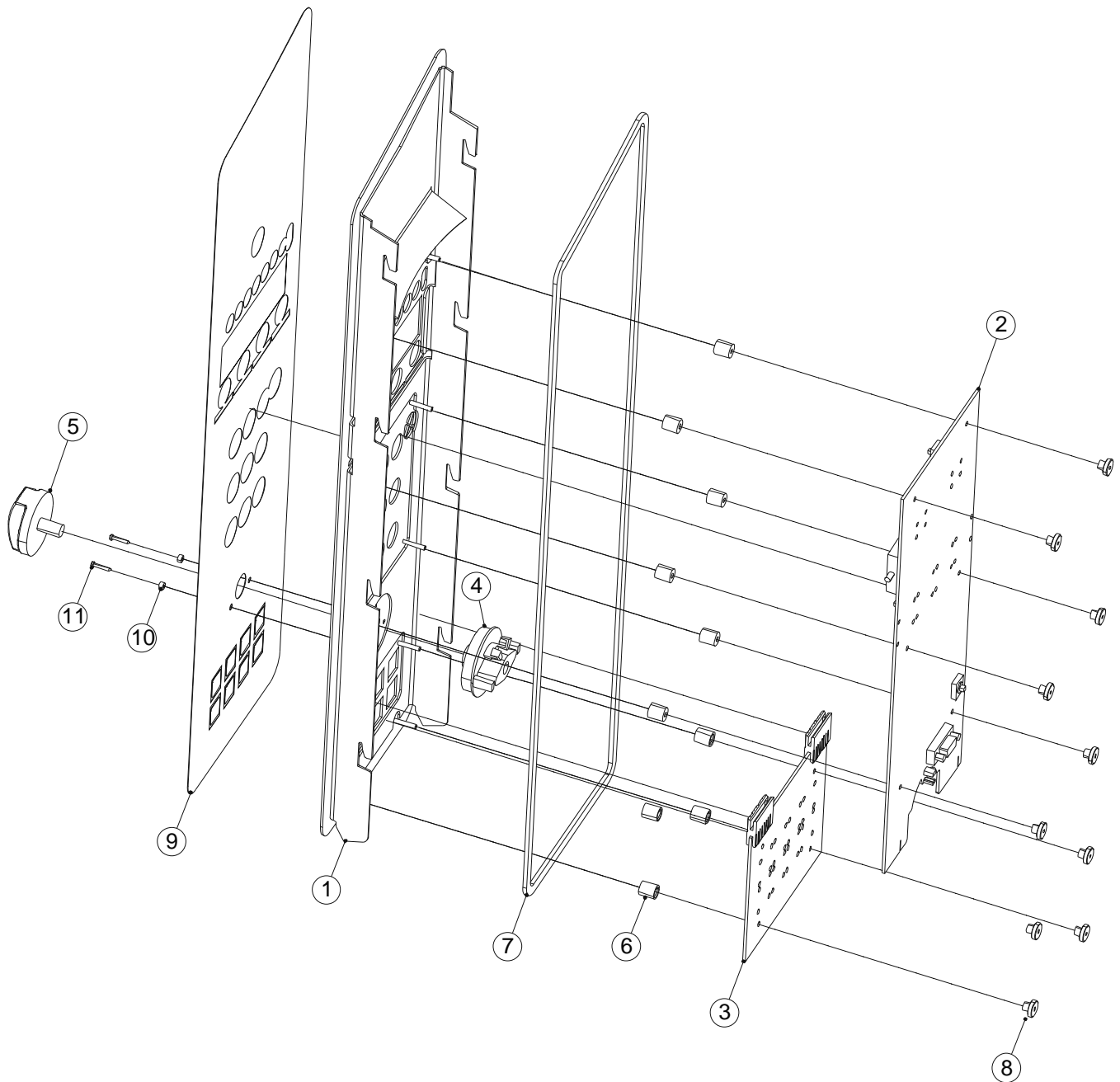


DETAIL C



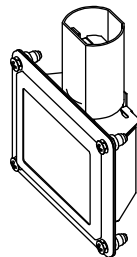
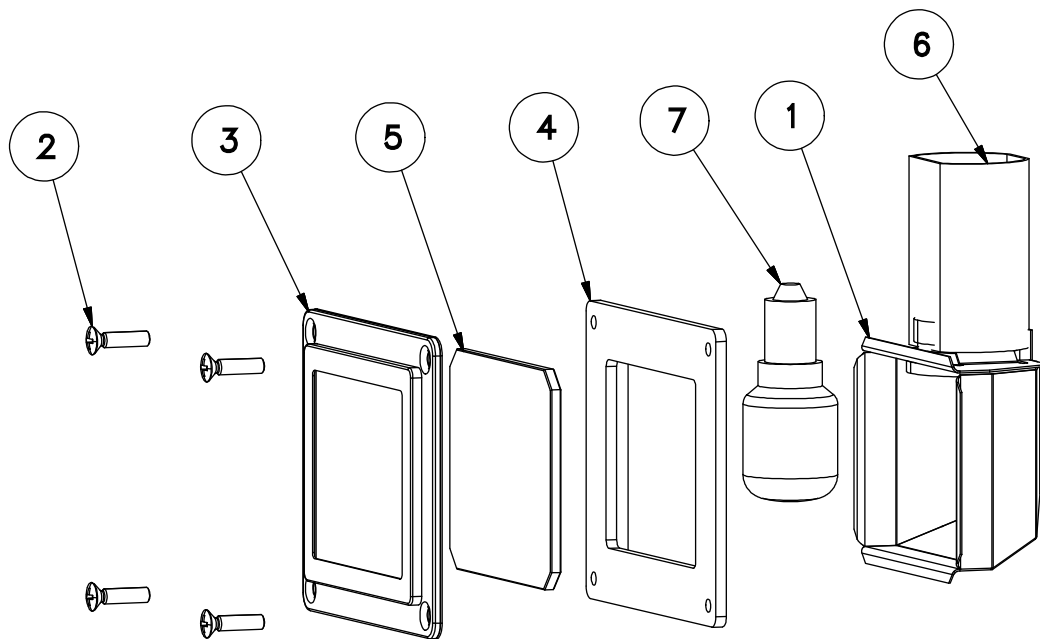
| CLEVELAND RANGE, I.L.C.   |              |   |                    |
|---|--------------|---|--------------------|
| 1333 East 179th St., Cleveland, Ohio 44110-2574   |              |   |                    |
| THIS DOCUMENT IS UNCLASSIFIED AND IS THE PROPERTY OF CLEVELAND RANGE. IT IS TO BE CONTAINED AND CONTROLLED BY THE PERSONNEL OF CLEVELAND RANGE. |              |   |                    |
| TOLERANCES UNLESS OTHERWISE SPECIFIED   | DO NOT SCALE | DRAWN BY DPeterson  | DATE 10/23/2006    |
| DECIMAL ± 0.030   |              | TITLE INSTRUCTION, ASSEMBLY, COMPONENT PANEL, OGB 10.20/12.20 |                    |
| ANGULAR ± 1°  | SIZE D       | DRAWING NO. 300613  | SHEET 2 OF 2 REV B |

# ASSEMBLY, CONTROL PANEL, WITH PICTO ALL MODELS



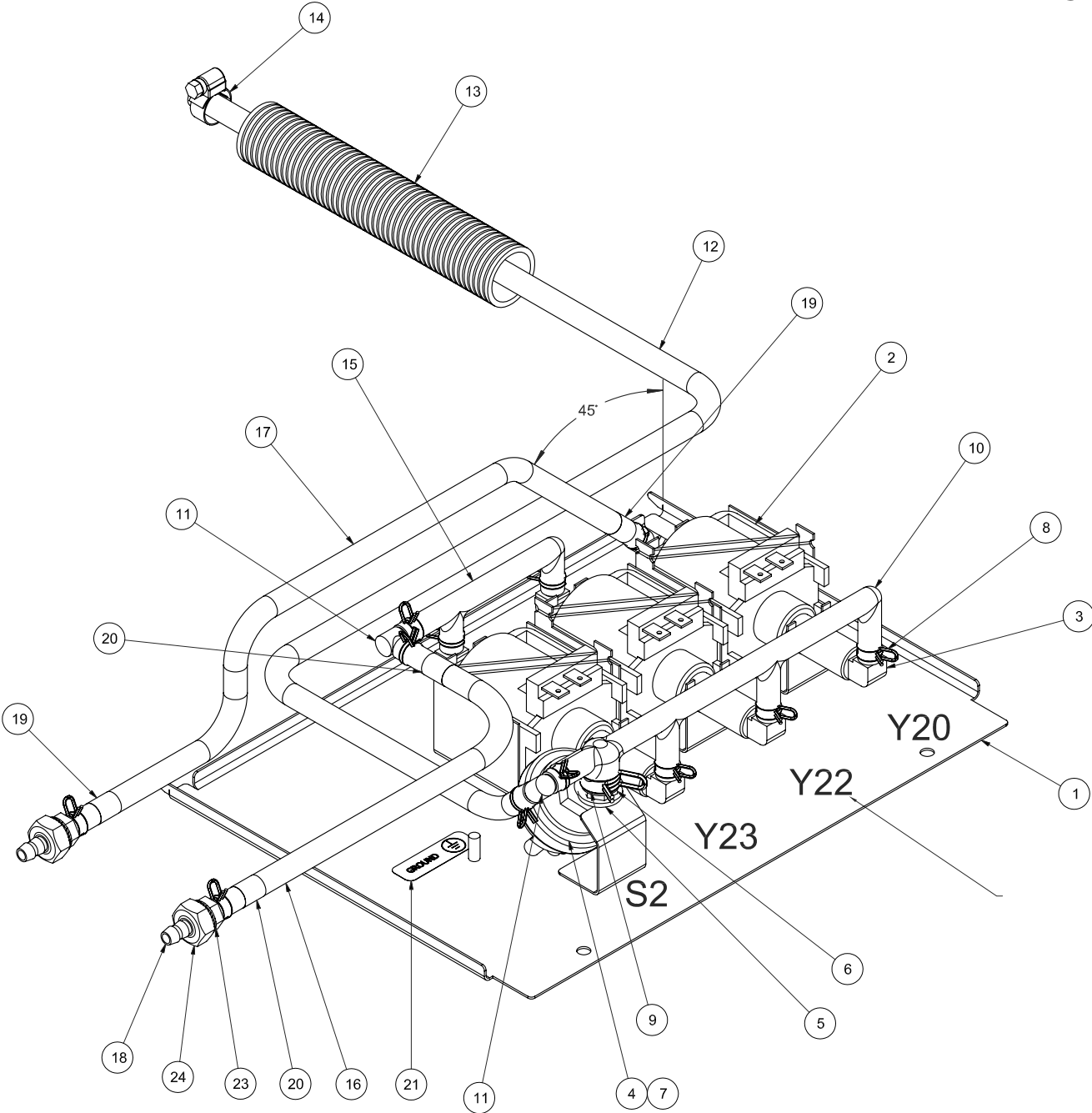
| ITEM | QTY | PART NO.       | DESCRIPTION                                 |
|------|-----|----------------|---|
| 1    | 1   | C2114297       | WELDMENT CONTROL PANEL                      |
| 2    | 1   | FKC5019101-500 | CONTROLLER, 5010 OPERATING MODULE           |
| 3    | 1   | C5019105       | CONTROLLER, 5010 PICTOMODULE PICTO          |
| 4    | 1   | C5009313       | LATCH ROCKER                                |
| 5    | 1   | C5009314       | KNOB, SELECTOR, COMBI                       |
| 6    | 10  | C8009030       | SPACER, CONTROL PANEL                       |
| 7    | 1   | C7011010       | GASKET FRONT PLATE                          |
| 8    | 10  | C6005254       | NUT KNURLED                                 |
| 9    | 1   | 111588         | LABEL, CONTROL PANEL, STEAM GEN, WITH PICTO |
|      | 1   | 111590         | LABEL, CONTROL PANEL, SPRITZER, WITH PICTO  |
| 10   | 2   | C6005270       | SPACER, CONTROL KNOB STOP                   |
| 11   | 2   | C8007013       | SLOTTED PAN-HEAD TAPPING SCREW 2.2 X 13     |
| 12   | 1   | 300533         | CABLE, CONNECTING, CONTROL (NOT SHOWN)      |

# LIGHT ASSEMBLY ALL MODELS



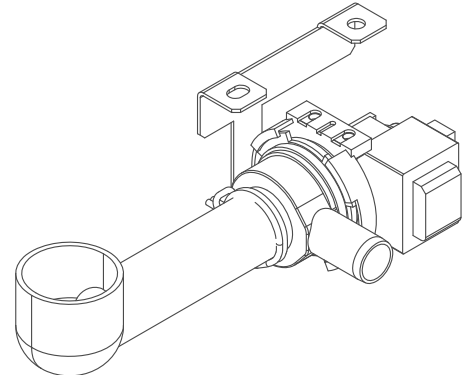
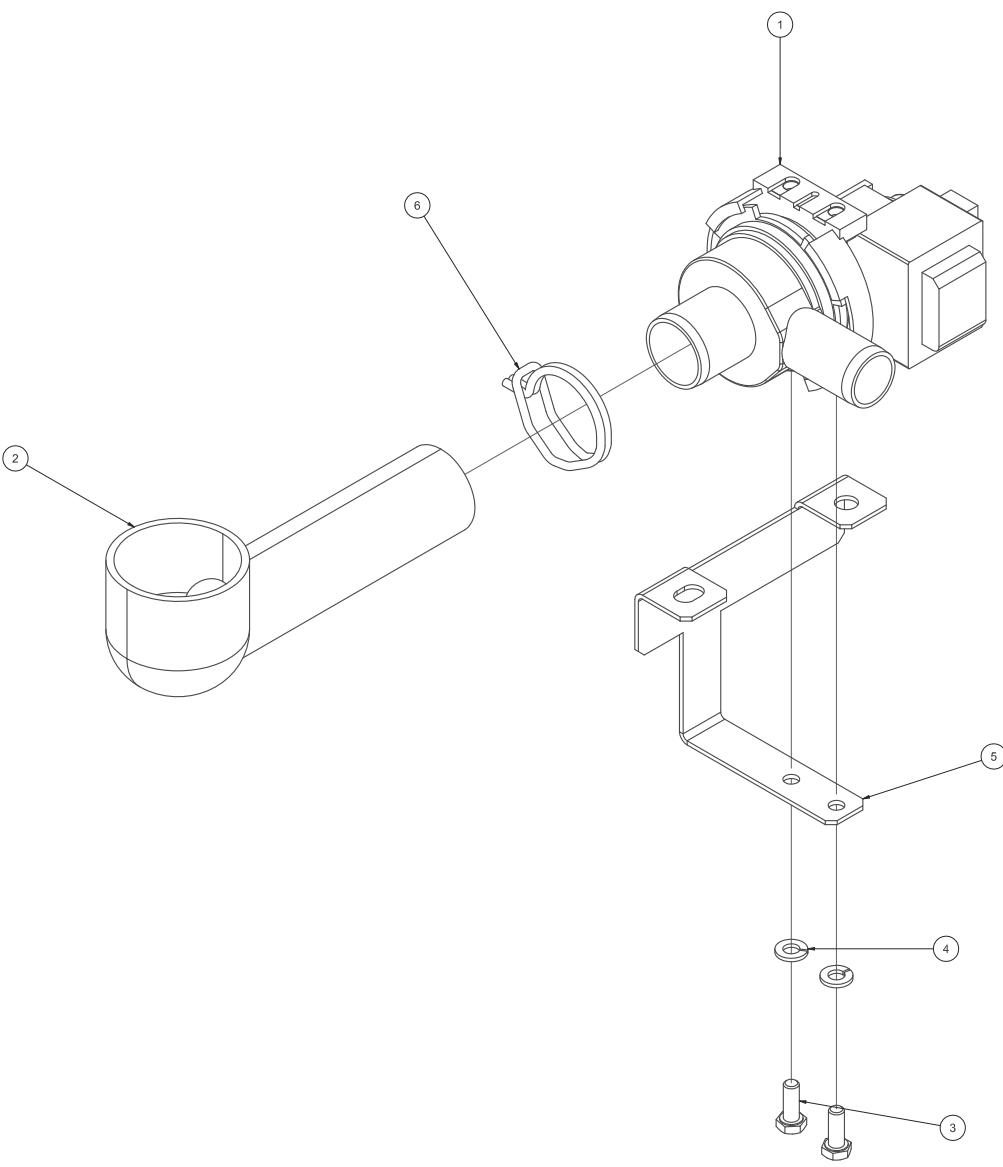
|      |     |          |   |
|------|-----|----------|---|
| 7    | 1   | C5005045 | BULB, LIGHT, 25W, 230V (ELECTRIC UNITS) |
|      |     | C5005043 | BULB, LIGHT, 25W, 120V (GAS UNITS)      |
| 6    | 1   | C8019006 | PROTECTION CAP, CAVITY LIGHT            |
| 5    | 1   | C5015002 | GLASS, CAVITY LIGHT                     |
| 4    | 1   | C6015020 | GASKET, CAVITY LIGHT                    |
| 3    | 1   | C5015003 | FRAME, CAVITY LIGHT                     |
| 2    | 4   | C8002025 | ROUNDED COUNTERSUNK HEAD SCREW M4X16    |
| 1    | 1   | C5015001 | REFLECTOR HOUSING, CAVITY LIGHT         |
| ITEM | QTY | PART NO. | DESCRIPTION                             |

# CLEANING PUMP ASSEMBLY



| ITEM | QTY | PART NO.      | DESCRIPTION  |
|------|-----|---------------|--|
| 1    | 1   | C2114823      | WELDMENT, PUMP HOUSING, 110V P3  |
| 2    | 3   | 300352        | PUMP, OSCILLATING PISTON, 110-120VAC, 60Hz P3                                      |
| 3    | 6   | 105787        | FITTING, HOSE BARB, 90°, 1/4 H X 1/8 NPT(M)  |
| 4    | 1   | C5009055      | SWITCH, PRESSURE, AUTO CLEANING SYSTEM, P3   |
| 5    | 1   | C6005016      | GASKET, FLAT, 18.8mm OD X 10.3mm ID X 2mm THICK                                    |
| 6    | 1   | C6015229      | BUSHING, THREADED, PRESSURE SWITCH P3  |
| 7    | A/R | 111568        | THREAD SEALANT, (LOCTITE 577)  |
| 8    | 12  | C8009058      | CLAMP, HOSE, SPRING, DOUBLE WIRE, 9.1 - 9.6 mm (0.358 - 0.378 in)                  |
| 9    | 1   | C8019010      | CLAMP, HOSE, SPRING, DOUBLE WIRE, 14.1 - 14.8 mm (0.555 - 0.583 in)                |
| 10   | 1   | C6014000      | MANIFOLD, DISCHARGE, CLEANING PUMPS, EPDM  |
| 11   | 2   | C6005414      | FITTING, HOSE, 90 DEGREE ELBOW, 6mm BARB X 6mm BARB, PLASTIC (POM)                 |
| 12   | 1   | C701230265000 | HOSE, EPDM, 6mm ID X 10mm OD, 65.000" LONG   |
| 13   | 1   | C700204433500 | HOSE, PROTECTION, 28mm OD X 23mm ID, CUT 33-1/2" LONG                              |
| 14   | 1   | 106526        | CLAMP, HOSE, WORM DRIVE, 3/8 TO 5/8x5/16W, SST                                     |
| 15   | 1   | C6014001      | MANIFOLD, SUCTION, CLEANING PUMPS, EPDM  |
| 16   | 1   | C701230239500 | HOSE, EPDM, 6mm ID X 10mm OD, 39.500" LONG   |
| 17   | 1   | C701230245500 | HOSE, EPDM, 6mm ID X 10mm OD, 45.500" LONG   |
| 18   | 2   | C6015247      | FITTING, BULKHEAD, HOSE, 8mm ID  |
| 19   | 2   | C6019111      | LABEL, BLUE, CONVOCARE, CLEANER HOSE   |
| 20   | 2   | C6019109      | LABEL, RED, CONVOCLEAN, CLEANER HOSE   |
| 21   | 1   | 14897         | LABEL, GROUND  |
| 22   | 1   | C5215890      | HARNESS, WIRE, CLEANING, 20.20   |
| 23   | 2   | C8006063      | WASHER, BELLEVILLE, M10, SERRATED BOTH SIDES, SST, 10.5mm ID X 16mm OD X 1mm THICK |
| 24   | 2   | 111540        | NUT, HEX, M10 X 1.5 (DIN 934), STAINLESS STEEL                                     |
| 25   | 1   | 14672         | NUT, HEX, NYLOK, 10-32, ZP (FOR GROUND WIRE)                                       |
| 26   | 3   | 078180-1      | O-RING   |

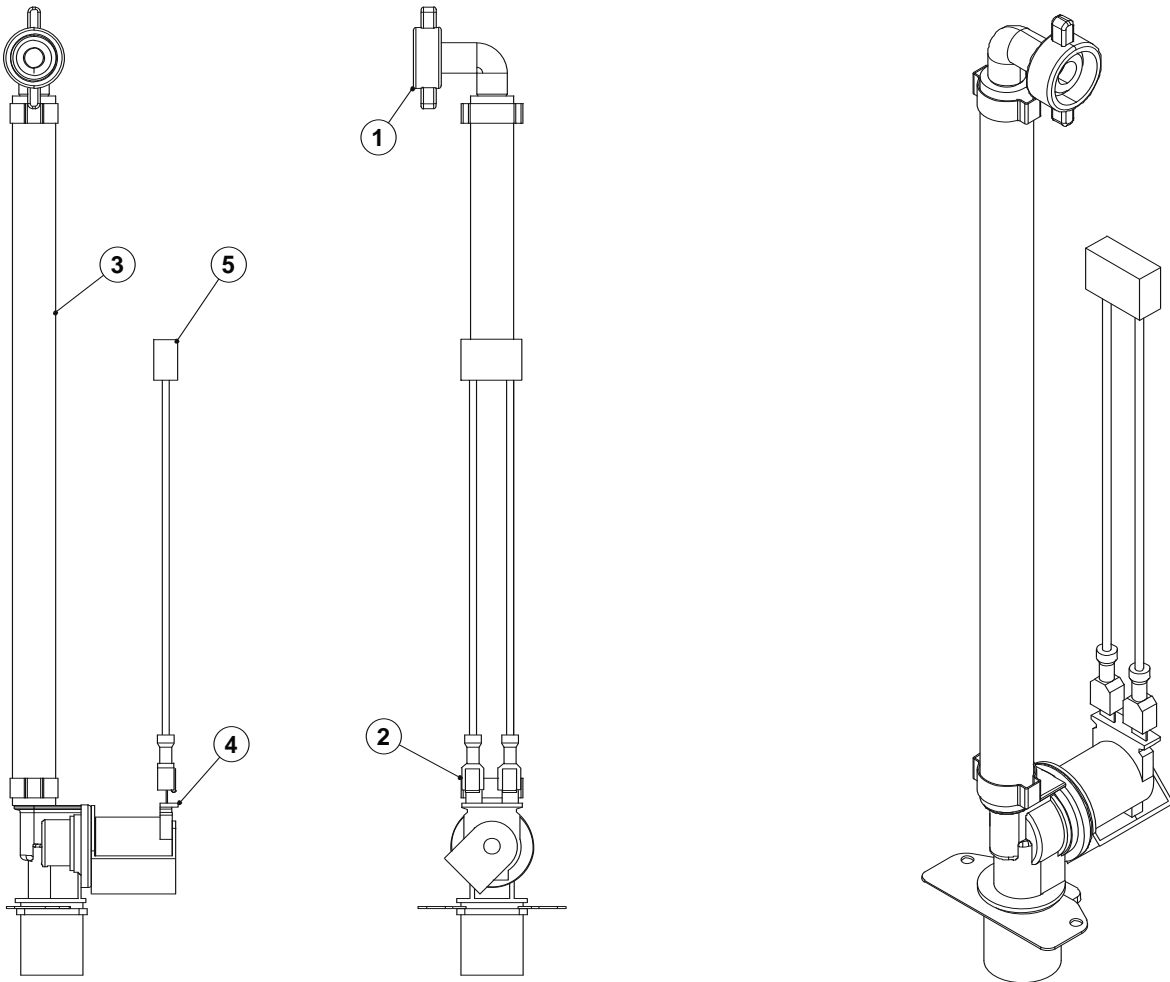




|   |      |     |          |   |
|---|------|-----|----------|---|
| △ | 6    | 1   | 107481   | CLAMP HOSE DOUBLE WIRE                  |
| △ | 5    | 1   | 113289   | BRACKET PUMP COMBI GAS GENERATOR        |
|   | 4    | 2   | 23105    | WASHER LOCK 1/4" KATLINK STYLE, SST     |
|   | 3    | 2   | C8003043 | HEXAGON BOLT M6x16 A2 P2P3              |
|   | 2    | 1   | C8015101 | DRAIN ELBOW, FDA, INLET, COMBI GEN PUMP |
|   | 1    | 1   | 300753   | DRAIN PUMP, 120V                        |
|   | ITEM | QTY | PART NO. | DESCRIPTION                             |

# ASSEMBLY, WATER HOSE SYSTEM, CONDENSER

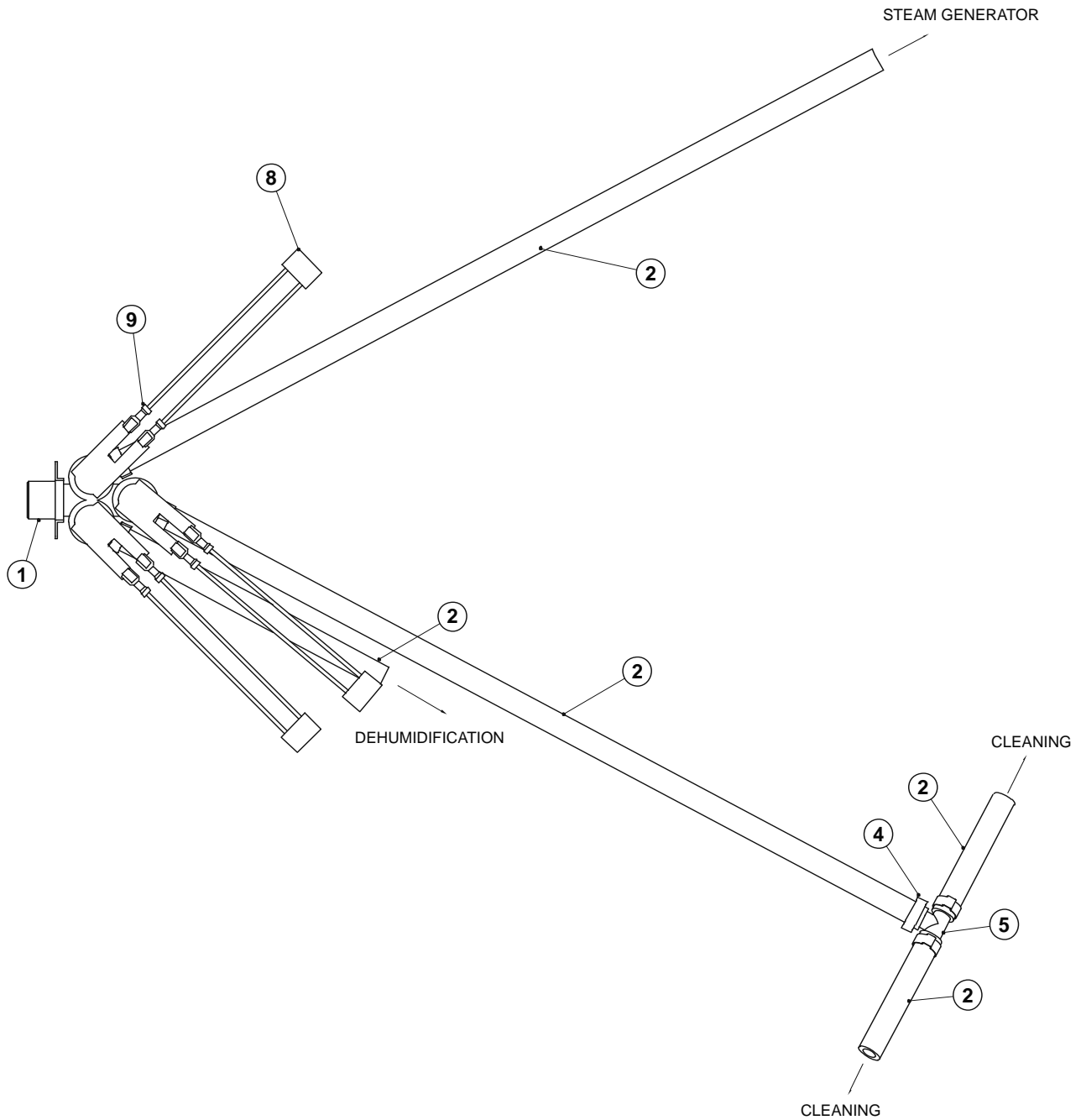
ALL MODELS



| ITEM | QTY | PART NO.    | DESCRIPTION                            |
|------|-----|-------------|--|
| 1    | 1   | C6015215    | ELBOW, HOSE CONNECTION, 3/8" WITH SEAL |
| 2    | 2   | 111647      | CLAMP, OETIKER, S/S, 19/32"            |
| 3    | 1   | 11149811000 | HOSE, SILICONE, 3/8" ID X 11.000       |
| 4    | 1   | 300455      | VALVE ASSEMBLY, 1 WAY, 120 VAC         |
| 5    | 1   | 300407      | FILTER, ELECTRICAL                     |
| 6    | 2   | 300509      | TERMINAL, 18-22 AWG PIGGY BACK         |

# ASSEMBLY, WATER VALVE

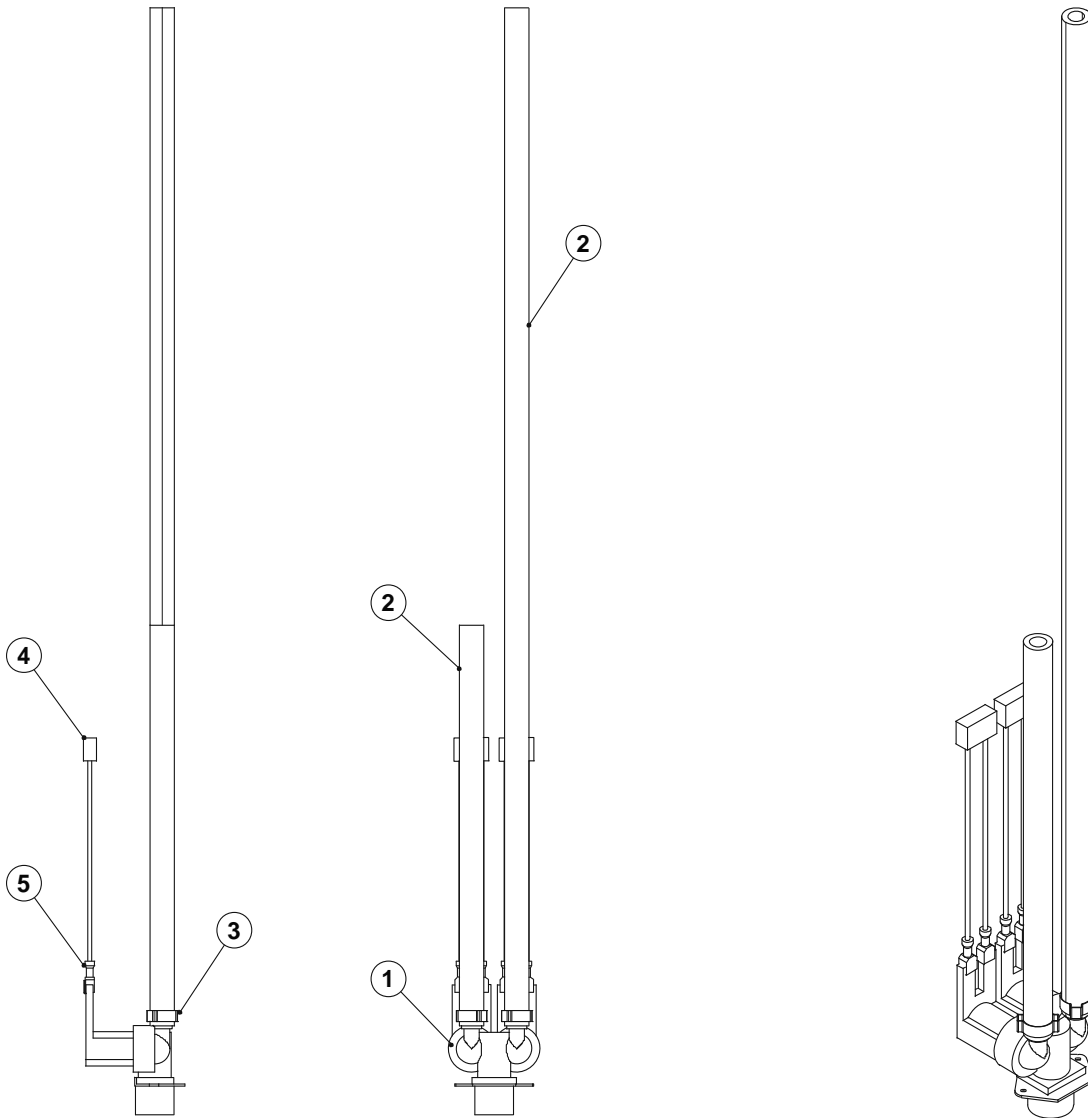
ALL 20.20 MODELS



| ITEM | QTY | PART NO. | DESCRIPTION                              |
|------|-----|----------|--|
| 1    | 1   | 300453   | VALVE ASSEMBLY, 3WAY 240VAC              |
| 1    | 1   | 300363   | VALVE ASSEMBLY, 3WAY 120 VAC             |
| 2    | 5   | 111498   | HOSE, SILICONE, 3/8" ID (SPECIFY LENGTH) |
| 4    | 6   | 111647   | CLAMP, OETIKER, S/S, 19/32"              |
| 5    | 1   | 111646   | TEE, BRASS, 3/8" BRASS                   |
| 8    | 3   | 300407   | FILTER, ELECTRICAL                       |
| 9    | 6   | 300509   | TERMINAL, 18-22 AWG PIGGY BACK           |

# ASSEMBLY, WATER VALVE

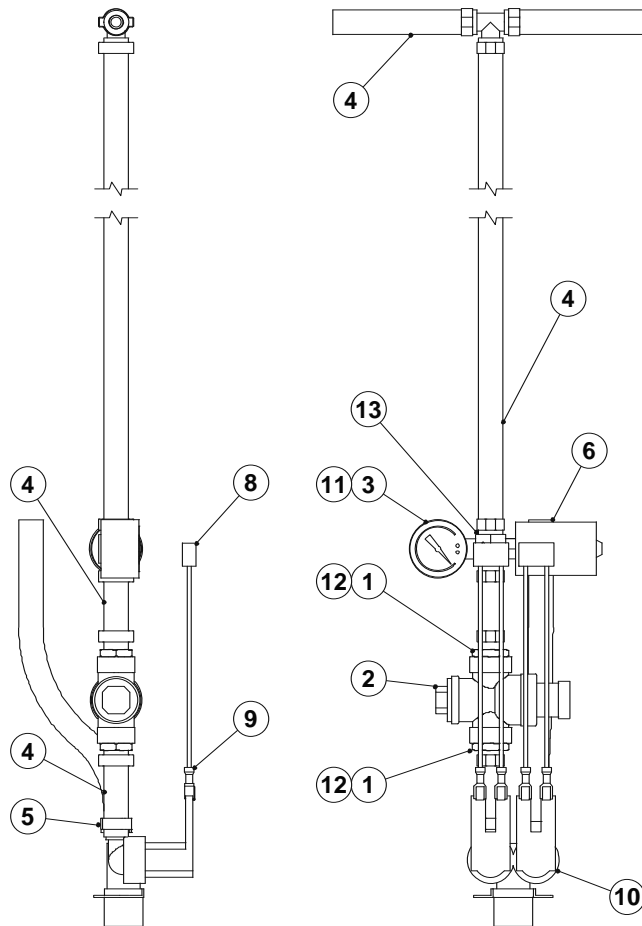
OGB 20.20 MODELS



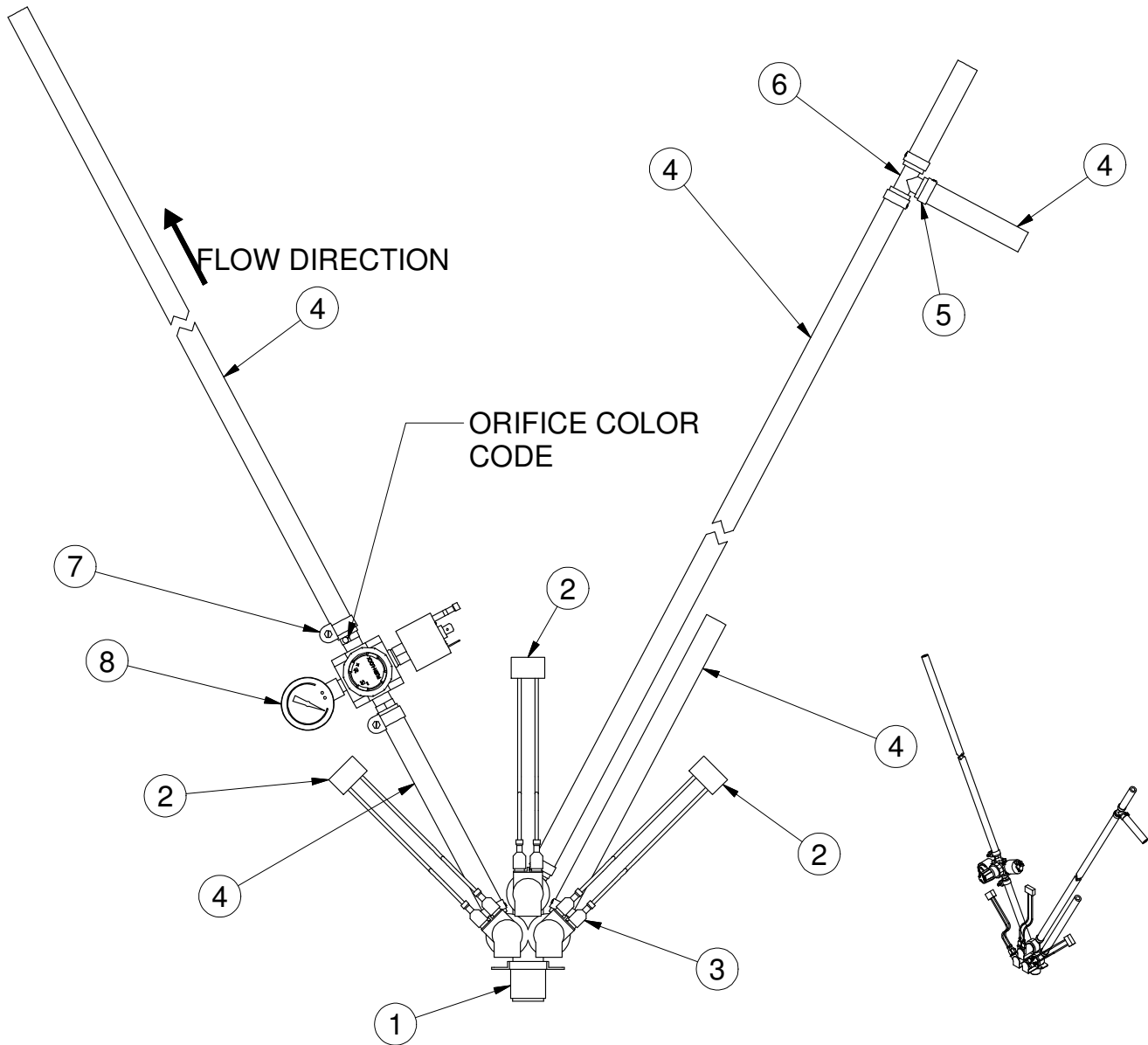
| ITEM | QTY | PART NO. | DESCRIPTION                              |
|------|-----|----------|--|
| 1    | 1   | 300456   | VALVE ASSY. 2 WAY 120VAC                 |
| 2    | 2   | 111498   | HOSE, SILICONE, 3/8" ID (SPECIFY LENGTH) |
| 3    | 2   | 111647   | CLAMP, OETIKER, S/S, 19/32"              |
| 4    | 2   | 300407   | FILTER, ELECTRICAL                       |
| 5    | 4   | 300509   | TERMINAL, 18-22 AWG PIGGY BACK           |

# ASSEMBLY, WATER VALVE

OGS 20.20 MODELS



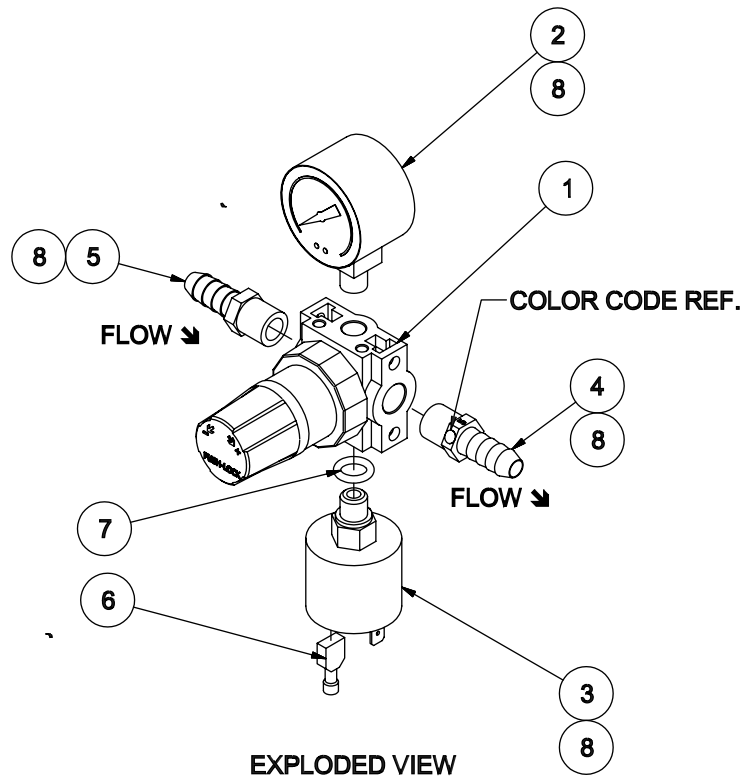
| ITEM | QTY | PART NO. | DESCRIPTION                                    |
|------|-----|----------|--|
| 1    | 2   | C6015401 | BARB, 1/2 R X 3/8 HOSE                         |
| 2    | 1   | C5001085 | PRESSURE REGULATING VALVE ODGAS                |
| 3    | 1   | C6006140 | GAUGE, 60 PSI BOTTOM MOUNT                     |
| 4    | 6   | 111498   | HOSE, SILICONE, 3/8" ID (SPECIFY LENGTH)       |
| 5    | 9   | 111647   | CLAMP, OETIKER, S/S, 19/32"                    |
| 6    | 1   | C5009063 | PUSH BUTTON SWITCH, INJ, (CHANGE-OVER CONTACT) |
| 8    | 2   | 300407   | FILTER, ELECTRICAL                             |
| 9    | 4   | 300509   | TERMINAL, 18-22 AWG PIGGY BACK                 |
| 10   | 1   | 300456   | VALVE ASSY. 2 WAY 120VAC                       |
| 11   | A/R | 00945    | TAPE, TEFLON, 1/2"                             |
| 12   | A/R | 111651   | SEALANT, LOCTITE, WHITE, DRI-SEAL, 513         |
| 13   | 1   | C6015234 | CROSS, 3/8 HOSE BARB                           |
| 16   | 1   | 111646   | TEE, BRASS, 3/8" BRASS                         |



| ITEM | QTY | PART NO.    | DESCRIPTION                                      |
|------|-----|-------------|--|
| 1    | 1   | 300453      | VALVE, SOLENOID, 3 WAY, 240VAC                   |
|      |     | 300363      | VALVE, SOLENOID, 3 WAY, 120VAC                   |
| 2    | 3   | 300407      | FILTER, ELECTRICAL, RC NETWORK, 125 VAC, 200 VDC |
| 3    | 6   | 300509      | TERMINAL, SLIPON, INSUL., 18-22 AWG, PIGGYBACK   |
| 4    | 7   | 111498      | HOSE, SILICONE, 0.375" ID X 0.655" OD            |
| 5    | 6   | C6016070    | CLAMP, HOSE, 0.630" - 0.756", SST, OETIKER       |
| 6    | 1   | 111646      | TEE, HOSE BARB, BRASS, 3/8"H X 3/8"H X 3/8"H     |
| 7    | 2   | C6006086    | HOSE CLAMP, 1/2" 12-20 MM, 15 MM ADJUSTED        |
| 8    | 1   | SEE DRAWING | REGULATOR ASSEMBLY, W / ORIFICE, COMBI           |

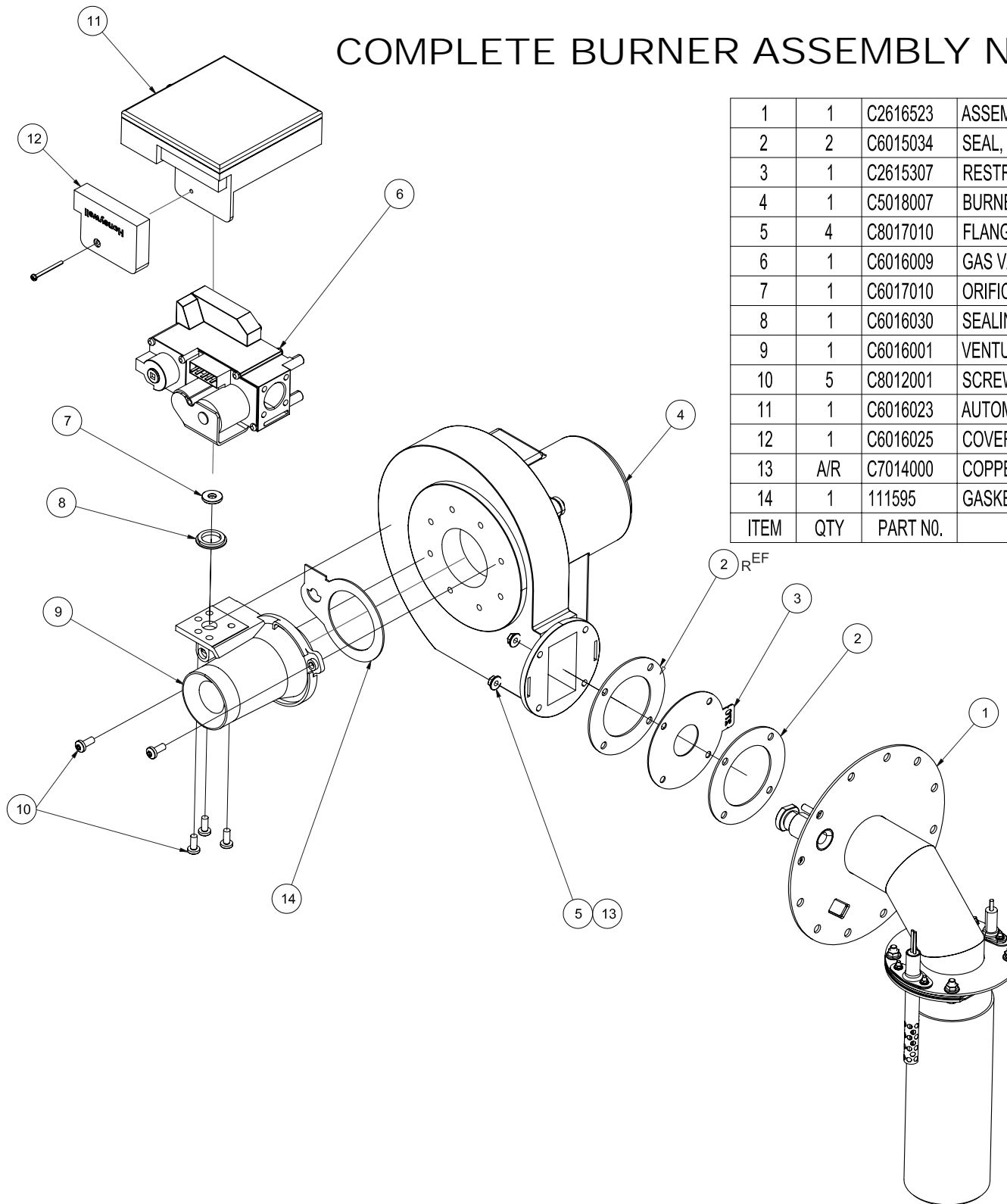
# REGULATOR ASSEMBLY

| ASSEMBLY PART NO. | ORIFICE FTG. PN. | ORIFICE SIZE | COLOR CODE |
|-------------------|------------------|--------------|------------|
| 1132281           | 1132301          | 0.5mm        | RED        |
| 1132282           | 1132302          | 0.6mm        | BLUE       |
| 1132283           | 1132303          | 0.7mm        | YELLOW     |
| 1132284           | 1132304          | 1.0mm        | GREEN      |



|      |     |           |   |
|------|-----|-----------|---|
| 8    | A/R | 111651    | SEALANT, LOCTITE, WHITE, HIGH TEMP, DRI-SEAL 513              |
| 7    | 1   | 113236    | O-RING, 3/8"ID X 9/16"OD X 3/32"THK, BUNA-N                   |
| 6    | 1   | 20356     | SLIP-ON FULL INSULATED, FEMALE, 0.032 X 0,250                 |
| 5    | 1   | 105277    | FTG, HOSE BARB, 3/8 H X 1/4 NPT, BR                           |
| 4    | 1   | SEE CHART | FTG, HOSE BARB, 3/8H X 1/4NPT, BR; W/ORIFICE                  |
| 3    | 1   | C5009063  | SWITCH, PRESSURE, INJECTOR SYSTEM                             |
| 2    | 1   | C6006140  | GAUGE, PRESSURE, 0 -60 PSI (4 BAR) 1/8" BPP BOTTOM CONNECTION |
| 1    | 1   | 113229    | REGULATOR, 0-60PSIG, 1/4"NPT                                  |
| ITEM | QTY | PART NO.  | DESCRIPTION   |

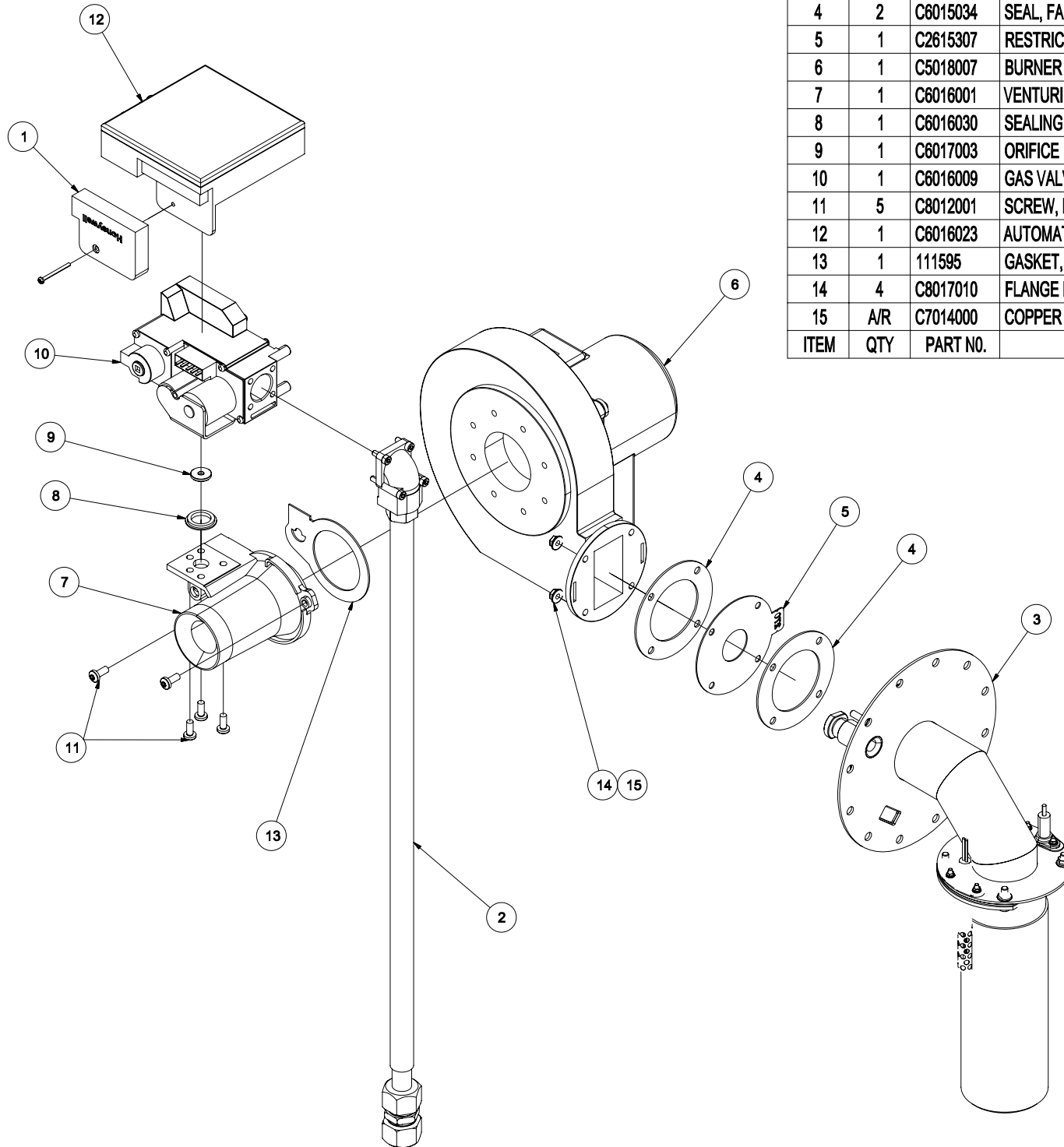
# COMPLETE BURNER ASSEMBLY NAT



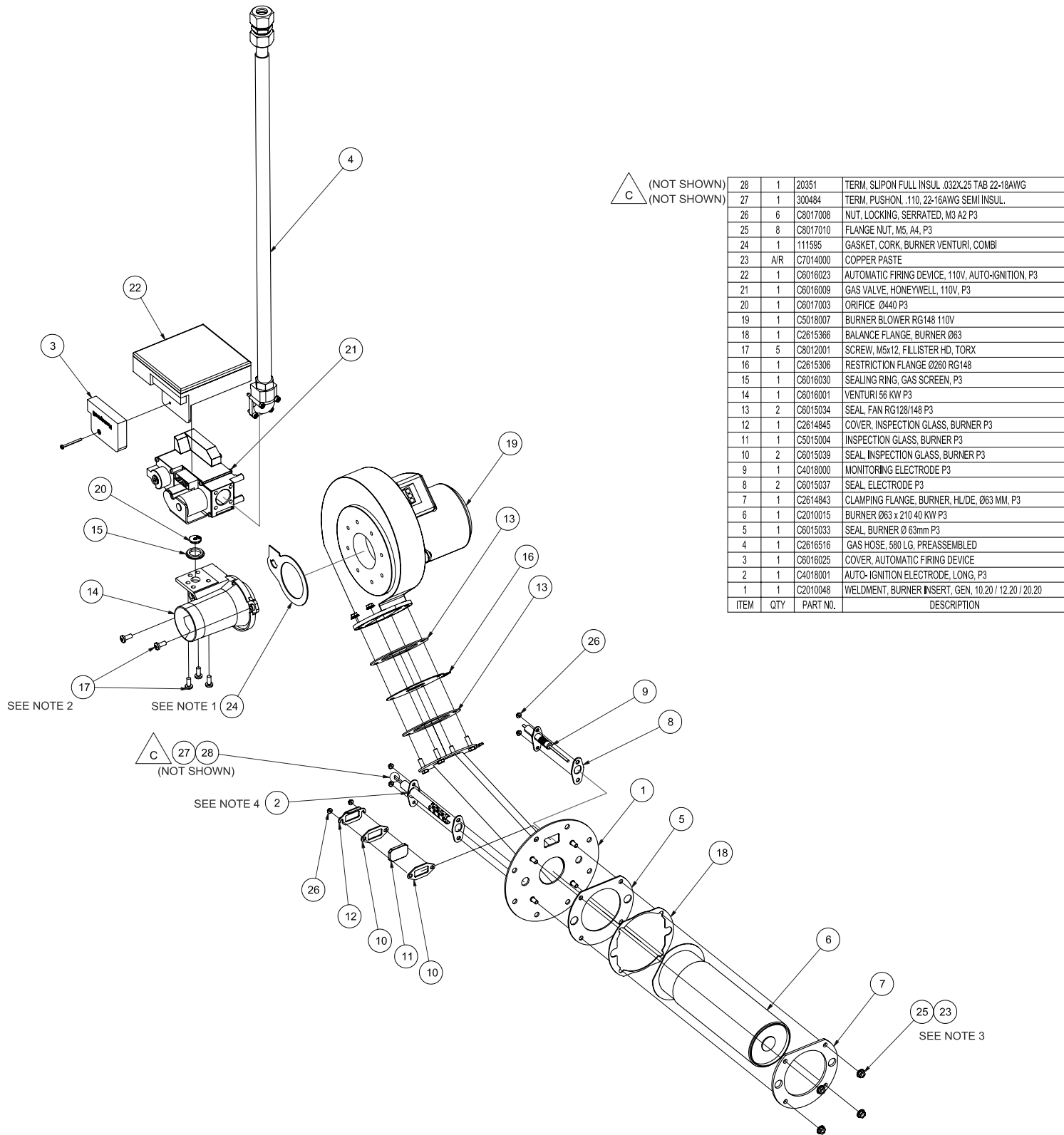
|      |     |          |   |
|------|-----|----------|---|
| 1    | 1   | C2616523 | ASSEMBLY, BURNER INSERT, HOT AIR, 10.20/12.20/20.20 |
| 2    | 2   | C6015034 | SEAL, FAN RG128/148 P3                              |
| 3    | 1   | C2615307 | RESTRICTION FLANGE RG148 Ø270                       |
| 4    | 1   | C5018007 | BURNER BLOWER RG148 110V                            |
| 5    | 4   | C8017010 | FLANGE NUT, M5, A4, P3                              |
| 6    | 1   | C6016009 | GAS VALVE, HONEYWELL, 110V, P3                      |
| 7    | 1   | C6017010 | ORIFICE, Ø6.20                                      |
| 8    | 1   | C6016030 | SEALING RING, GAS SCREEN, P3                        |
| 9    | 1   | C6016001 | VENTURI 56 KW P3                                    |
| 10   | 5   | C8012001 | SCREW, M5x12, FILLISTER HD, TORX                    |
| 11   | 1   | C6016023 | AUTOMATIC FIRING DEVICE, 110V, AUTO-IGNITION, P3    |
| 12   | 1   | C6016025 | COVER, AUTOMATIC FIRING DEVICE                      |
| 13   | A/R | C7014000 | COPPER PASTE  |
| 14   | 1   | 111595   | GASKET, CORK, BURNER VENTURI, COMBI                 |
| ITEM | QTY | PART NO. | DESCRIPTION   |

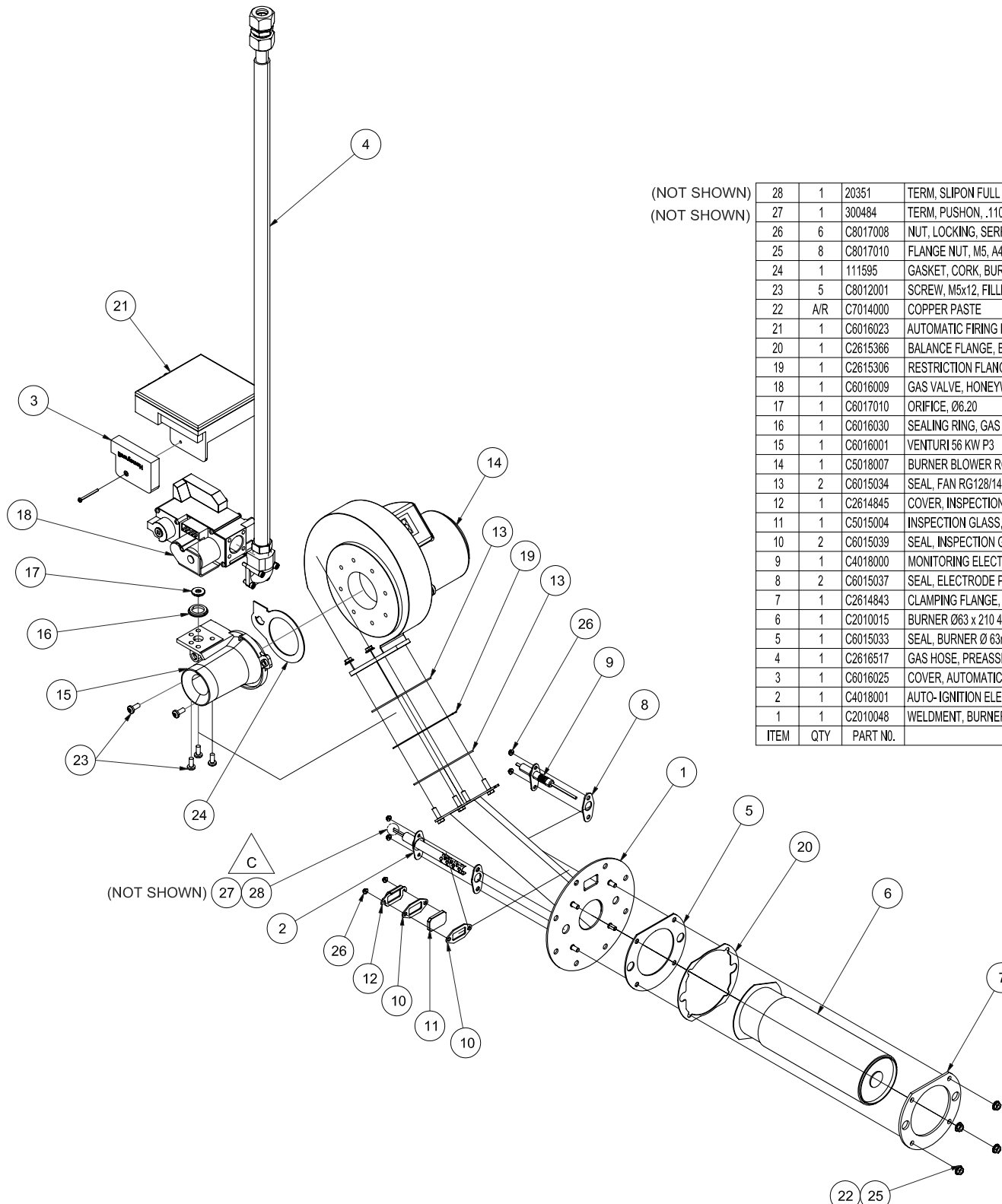


# COMPLETE BURNER ASSEMBLY LP



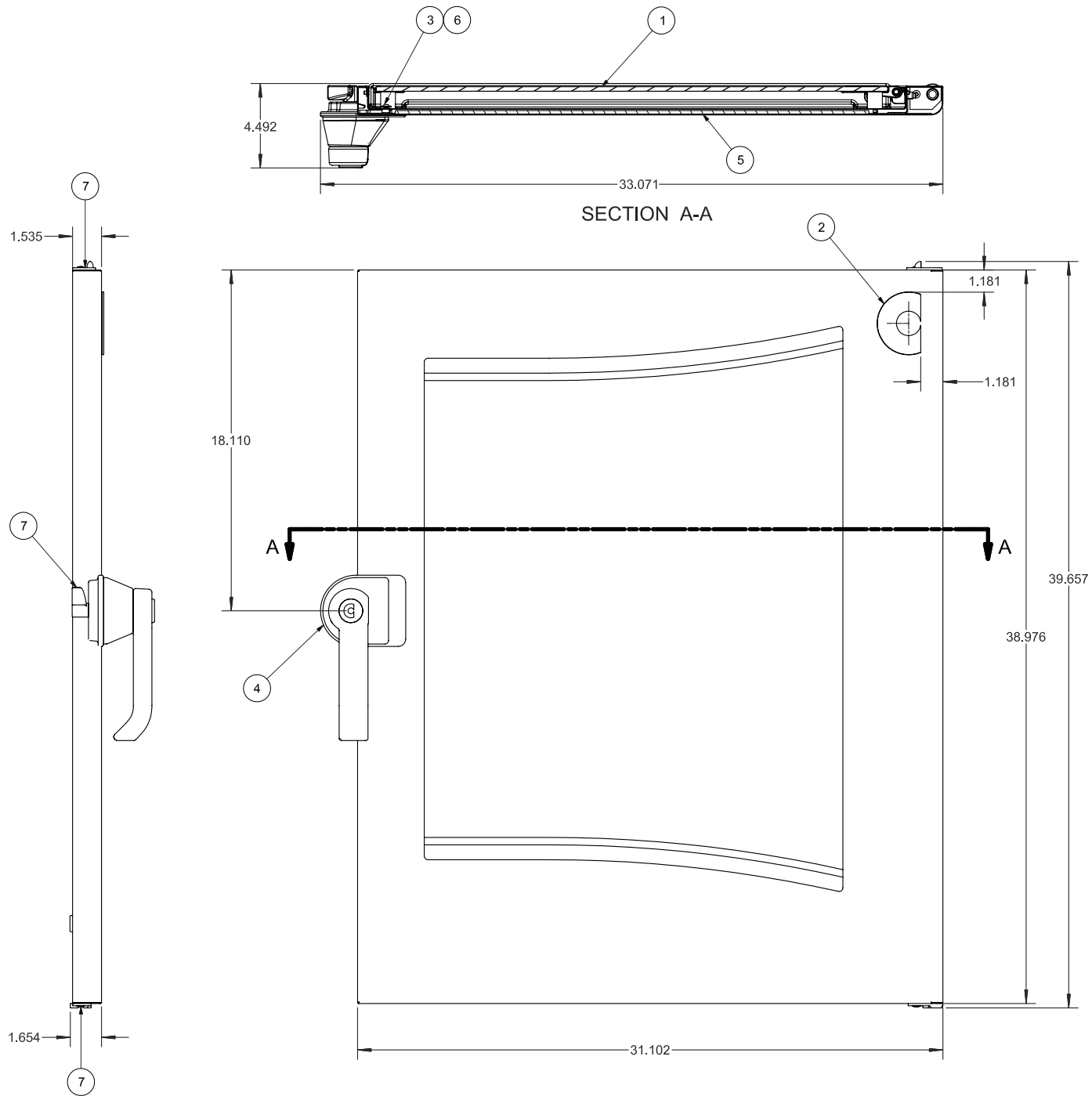
| 1    | 1   | C6016025 | COVER, AUTOMATIC FIRING DEVICE                      |
|------|-----|----------|---|
| 2    | 1   | C2616516 | GAS HOSE, 580 LG, PREASSEMBLED                      |
| 3    | 1   | C2616523 | ASSEMBLY, BURNER INSERT, HOT AIR, 10.20/12.20/20.20 |
| 4    | 2   | C6015034 | SEAL, FAN RG128/148 P3                              |
| 5    | 1   | C2615307 | RESTRICTION FLANGE RG148 Ø270                       |
| 6    | 1   | C5018007 | BURNER BLOWER RG148 110V                            |
| 7    | 1   | C6016001 | VENTURI 56 KW P3                                    |
| 8    | 1   | C6016030 | SEALING RING, GAS SCREEN, P3                        |
| 9    | 1   | C6017003 | ORIFICE Ø440 P3                                     |
| 10   | 1   | C6016009 | GAS VALVE, HONEYWELL, 110V, P3                      |
| 11   | 5   | C8012001 | SCREW, M5x12, FILLISTER HD, TORX                    |
| 12   | 1   | C6016023 | AUTOMATIC FIRING DEVICE, 110V, AUTO-IGNITION, P3    |
| 13   | 1   | 111595   | GASKET, CORK, BURNER VENTURI, COMBI                 |
| 14   | 4   | C8017010 | FLANGE NUT, M5, A4, P3                              |
| 15   | A/R | C7014000 | COPPER PASTE  |
| ITEM | QTY | PART NO. | DESCRIPTION   |





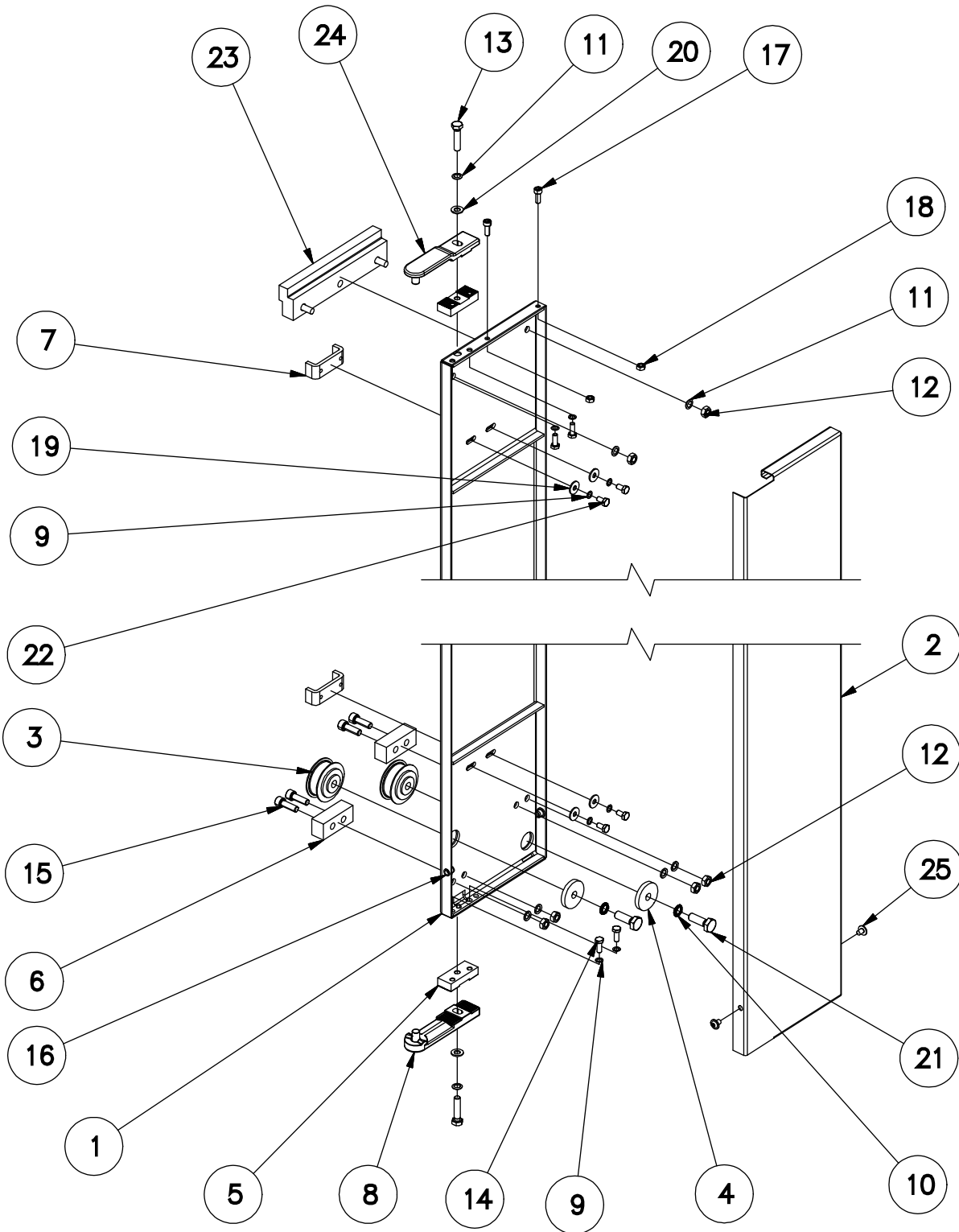
(NOT SHOWN)  
(NOT SHOWN)

| 28   | 1   | 20351    | TERM, SLIPON FULL INSUL .032X.25 TAB 22-18AWG       |
|------|-----|----------|---|
| 27   | 1   | 300484   | TERM, PUSHON, .110, 22-16AWG SEMI INSUL.            |
| 26   | 6   | C8017008 | NUT, LOCKING, SERRATED, M3 A2 P3                    |
| 25   | 8   | C8017010 | FLANGE NUT, M5, A4, P3                              |
| 24   | 1   | 111595   | GASKET, CORK, BURNER VENTURI, COMBI                 |
| 23   | 5   | C8012001 | SCREW, M5x12, FILLISTER HD, TORX                    |
| 22   | A/R | C7014000 | COPPER PASTE  |
| 21   | 1   | C6016023 | AUTOMATIC FIRING DEVICE, 110V, AUTO-IGNITION, P3    |
| 20   | 1   | C2615366 | BALANCE FLANGE, BURNER Ø63                          |
| 19   | 1   | C2615306 | RESTRICTION FLANGE Ø260 RG148                       |
| 18   | 1   | C6016009 | GAS VALVE, HONEYWELL, 110V, P3                      |
| 17   | 1   | C6017010 | ORIFICE, Ø6.20                                      |
| 16   | 1   | C6016030 | SEALING RING, GAS SCREEN, P3                        |
| 15   | 1   | C6016001 | VENTURI 56 KW P3                                    |
| 14   | 1   | C5018007 | BURNER BLOWER RG148 110V                            |
| 13   | 2   | C6015034 | SEAL, FAN RG128/148 P3                              |
| 12   | 1   | C2614845 | COVER, INSPECTION GLASS, BURNER P3                  |
| 11   | 1   | C5015004 | INSPECTION GLASS, BURNER P3                         |
| 10   | 2   | C6015039 | SEAL, INSPECTION GLASS, BURNER P3                   |
| 9    | 1   | C4018000 | MONITORING ELECTRODE P3                             |
| 8    | 2   | C6015037 | SEAL, ELECTRODE P3                                  |
| 7    | 1   | C2614843 | CLAMPING FLANGE, BURNER, HL/DE, Ø63 MM, P3          |
| 6    | 1   | C2010015 | BURNER Ø63 x 210 40 KW P3                           |
| 5    | 1   | C6015033 | SEAL, BURNER Ø 63mm P3                              |
| 4    | 1   | C2616517 | GAS HOSE, PREASSEMBLED, 780mm LONG                  |
| 3    | 1   | C6016025 | COVER, AUTOMATIC FIRING DEVICE                      |
| 2    | 1   | C4018001 | AUTO-IGNITION ELECTRODE, LONG, P3                   |
| 1    | 1   | C2010048 | WELDMENT, BURNER INSERT, GEN, 10.20 / 12.20 / 20.20 |
| ITEM | QTY | PART NO. | DESCRIPTION   |



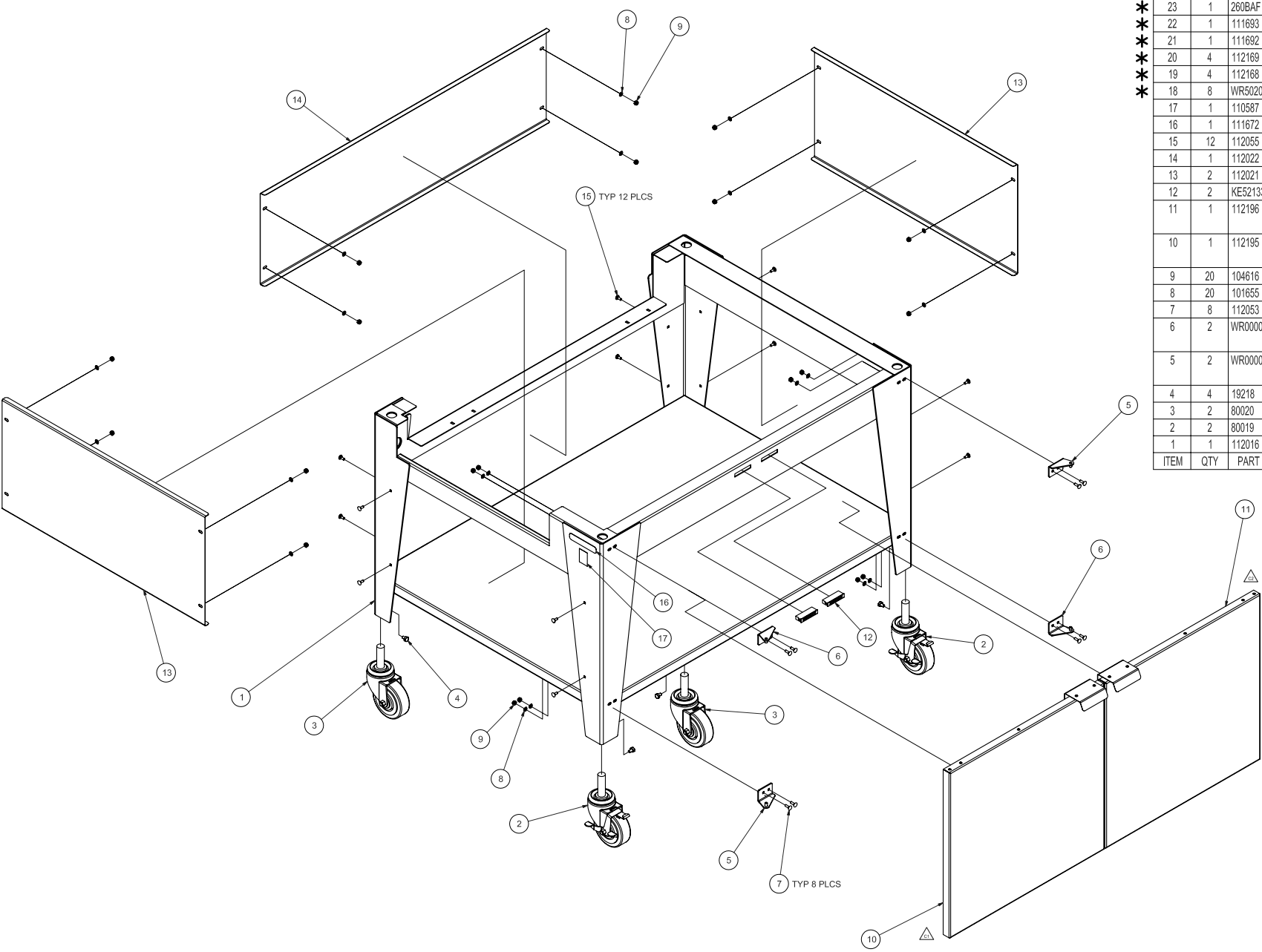
|      |     |          |                               |
|------|-----|----------|-------------------------------|
| 7    | A/R | C7003087 | GREASE - FRONT DOORS OD P2 P3 |
| 6    | A/R | C7004012 | LOCTITE 243 P3                |
| 5    | 1   | C2514360 | OUTER DOOR, 10.20 COMPLETE P3 |
| 4    | 1   | C6012000 | DOOR HANDLE, LOCKING, P3      |
| 3    | 2   | C8015000 | MLF SCREW M6X8 A2 P3          |
| 2    | 1   | C6009016 | PLASTIC LETTER "C" RED        |
| 1    | 1   | C2518468 | INNER DOOR, 10.20 COMPLETE P3 |
| ITEM | QTY | PART NO. | DESCRIPTION                   |

# SLIDING PLATE ASSEMBLY

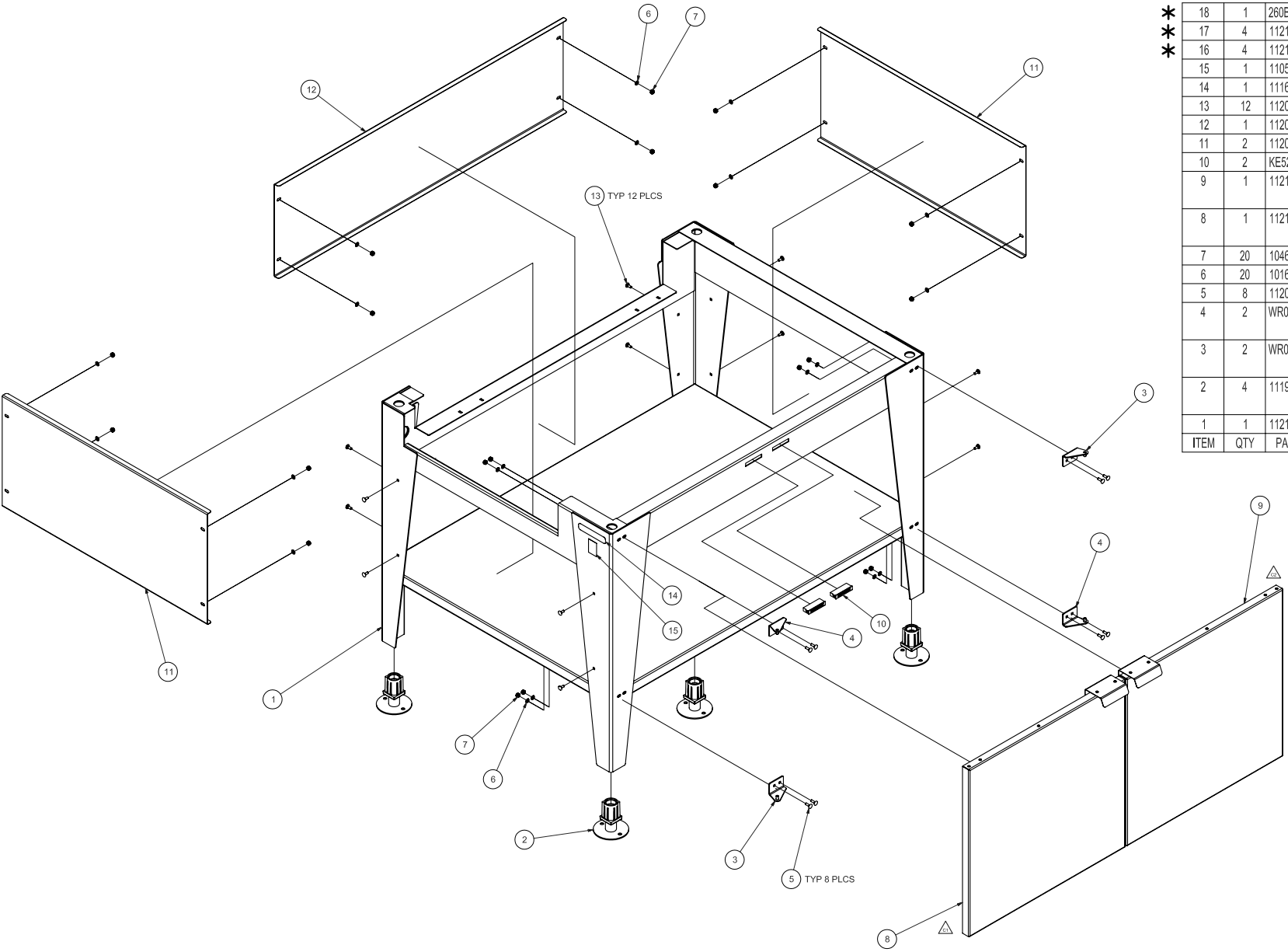


# SLIDING PLATE ASSEMBLY

| ITEM | QTY | PART NO. | DESCRIPTION                                       |
|------|-----|----------|---|
| 1    | 1   | 113069   | SLIDING PLATE WELDMENT, 6.10                      |
|      |     | 113070   | SLIDING PLATE WELDMENT, 10.10/10.20               |
|      |     | 113071   | SLIDING PLATE WELDMENT, 6.20                      |
|      |     | 113072   | SLIDING PLATE WELDMENT, 12.20                     |
|      |     | 113073   | SLIDING PLATE WELDMENT, 20.10/20.20               |
| 2    | 1   | C2114815 | COVER PANEL, 6.10                                 |
|      |     | C2114816 | COVER PANEL, 6.20                                 |
|      |     | C2114817 | COVER PANEL, 10.10/10.20                          |
|      |     | C2114818 | COVER PANEL, 12.20                                |
|      |     | C2114819 | COVER PANEL, 20.10/20.20                          |
| 3    | 2   | C6012017 | ROLLER, ASSEMBLY, DOOR GUIDE                      |
| 4    | 2   | C6012005 | DISC Ø39 x 6 RST P3                               |
| 5    | 2   | C2014008 | LOCKING BLOCK, CARRIAGE PLATE, P3                 |
| 6    | 2   | C6015226 | LOCKING BLOCK RST                                 |
| 7    | 2   | C6012006 | DOOR STOP, RST P3                                 |
| 8    | 1   | C2013012 | HINGE, DOOR, BOTTOM, CAST                         |
| 9    | 8   | C8006057 | SCHNORR LOCK WASHER S6 A2 P3                      |
| 10   | 2   | C8006063 | WASHER, BELLEVILLE, M10, SERRATED BOTH SIDES, SST |
| 11   | 8   | C8006060 | SCHNORR LOCK WASHER, S8, A2, P3                   |
| 12   | 6   | C8004057 | NUT, HEX, M8 A4                                   |
| 13   | 2   | C8003058 | HEXAGON BOLT, M8 X 35, A2 P2/P3                   |
| 14   | 4   | C8003043 | HEXAGON BOLT M6x16 A2 P2/P3                       |
| 15   | 4   | C8013002 | FILLISTER HEAD SCREW DIN 912 - M8X25 A2           |
| 16   | 2   | C8008095 | BLIND RIVET NUT M6 ROUND A2 P3                    |
| 17   | 2   | C8001073 | HEXAGON SOCKET SCREW M6x16 A2 P2/P3               |
| 18   | 2   | C8004040 | HEXAGON NUT M6 A4 P2/P3                           |
| 19   | 4   | C8005041 | WASHER 6.4 A2 DIN 9021 P2 P3                      |
| 20   | 2   | C8005050 | WASHER, 8.4 A2 DIN 125 P3                         |
| 21   | 2   | C8003066 | BOLT, HEX HD, M10x30, A2                          |
| 22   | 4   | C8013011 | HEXAGON BOLT M6x12 A2 P2/P3                       |
| 23   | 1   | C6012008 | SUPPORT STRIP VST P3                              |
| 24   | 1   | C2013013 | HINGE, DOOR, TOP, CAST                            |
| 25   | 2   | C8015000 | MLF SCREW M6X8 A2 P3                              |



|      |     |          |             |   |
|------|-----|----------|-------------|---|
| *    | 23  | 1        | 260BAF      | INSTRUCTION, INSTALLATION, COMBI STAND                      |
| *    | 22  | 1        | 111693      | CLIP, WIRE ROPE, 0.250 DIA., HOT DIPPED GALVANIZED          |
| *    | 21  | 1        | 111692      | KIT, RESTRAINING DEVICE, COMBI STAND                        |
| *    | 20  | 4        | 112169      | SCREW, 3/4-10 X 1, HEX HEAD, ZINC PLATED                    |
| *    | 19  | 4        | 112168      | WASHER, LOCK, SPLIT, 3/4, ZINC PLATED                       |
| *    | 18  | 8        | WR50204     | SHIM, CASTER, "C" SHAPED (FOR 3/4 STEM)                     |
|      | 17  | 1        | 110587      | LABEL, SANITATION, UL CLASS. NSF #2                         |
|      | 16  | 1        | 111672      | LABEL, COMBI STAND, MODEL NO. CST-20-CBCA (6.20, 10.20)     |
|      | 15  | 12       | 112055      | SCREW, CARRIAGE, 10-24x1/2, SST (RND HEAD, SQ NECK)         |
|      | 14  | 1        | 112022      | PANEL, REAR, CLOSED COMBI STAND, X.20                       |
|      | 13  | 2        | 112021      | PANEL, SIDE, CLOSED COMBI STAND, X.20                       |
|      | 12  | 2        | KE52133     | CATCH, MAGNETIC, SNAP-IN, SOUTHCO #02-10-201-10             |
|      | 11  | 1        | 112196      | ASSEMBLY, DOOR, DOUBLE PANEL, RIGHT HAND, COMBI STAND, X.20 |
|      | 10  | 1        | 112195      | ASSEMBLY, DOOR, DOUBLE PANEL, LEFT HAND, COMBI STAND, X.20  |
|      | 9   | 20       | 104616      | NUT, HEX, LOCK, 10-24, SST, NYLON INSERT                    |
|      | 8   | 20       | 101655      | WASHER, FLAT, #10, SST                                      |
|      | 7   | 8        | 112053      | SCREW, CARRIAGE, 10-24x5/8, SST (RND HEAD, SQ NECK)         |
|      | 6   | 2        | WR000001    | WELDMENT, HINGE BRACKET, LOWER RIGHT AND UPPER LEFT         |
|      | 5   | 2        | WR000000    | WELDMENT, HINGE BRACKET, LOWER LEFT AND UPPER RIGHT         |
|      | 4   | 4        | 19218       | SCREW, 1/4-20 X 3/8, HEX HEAD, SST                          |
|      | 3   | 2        | 80020       | CASTER, SWIVEL, 4", WITHOUT BRAKE                           |
|      | 2   | 2        | 80019       | CASTER, SWIVEL, 4", WITH BRAKE                              |
|      | 1   | 1        | 112016      | WELDMENT, CLOSED COMBI CASTER STAND, X.20                   |
| ITEM | QTY | PART NO. | DESCRIPTION |   |



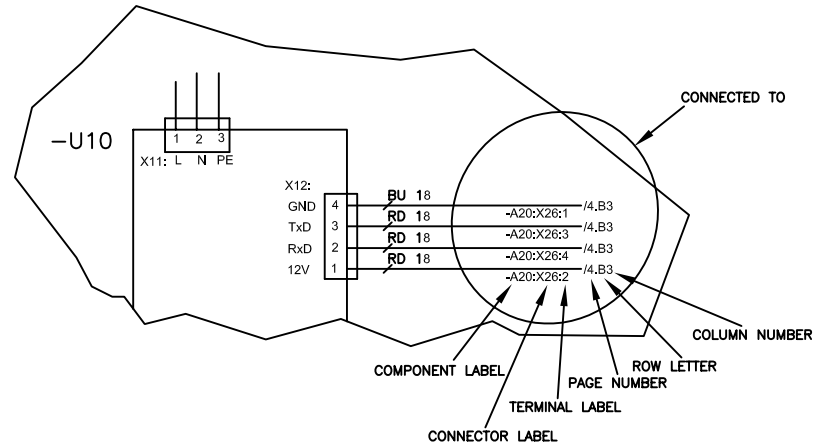
|      |     |          |  |
|------|-----|----------|--|
| * 18 | 1   | 260BAF   | INSTRUCTION, INSTALLATION, COMBI STAND   |
| * 17 | 4   | 112169   | SCREW, 3/4-10 X 1, HEX HEAD, ZINC PLATED   |
| * 16 | 4   | 112168   | WASHER, LOCK, SPLIT, 3/4, ZINC PLATED  |
| 15   | 1   | 110587   | LABEL, SANITATION, UL CLASS. NSF #2  |
| 14   | 1   | 111670   | LABEL, COMBI STAND, MODEL NO. CST-20-CB (6.20, 10.20)  |
| 13   | 12  | 112055   | SCREW, CARRIAGE, 10-24x1/2, SST (RND HEAD, SQ NECK)  |
| 12   | 1   | 112022   | PANEL, REAR, CLOSED COMBI STAND, X.20  |
| 11   | 2   | 112021   | PANEL, SIDE, CLOSED COMBI STAND, X.20  |
| 10   | 2   | KE52133  | CATCH, MAGNETIC, SNAP-IN, SOUTHCO #02-10-201-10  |
| 9    | 1   | 112196   | ASSEMBLY, DOOR, DOUBLE PANEL, RIGHT HAND, COMBI STAND, X.20                                      |
| 8    | 1   | 112195   | ASSEMBLY, DOOR, DOUBLE PANEL, LEFT HAND, COMBI STAND, X.20                                       |
| 7    | 20  | 104616   | NUT, HEX, LOCK, 10-24, SST, NYLON INSERT   |
| 6    | 20  | 101655   | WASHER, FLAT, #10, SST   |
| 5    | 8   | 112053   | SCREW, CARRIAGE, 10-24x5/8, SST (RND HEAD, SQ NECK)  |
| 4    | 2   | WR000001 | WELDMENT, HINGE BRACKET, LOWER RIGHT AND UPPER LEFT  |
| 3    | 2   | WR00000  | WELDMENT, HINGE BRACKET, LOWER LEFT AND UPPER RIGHT  |
| 2    | 4   | 111950   | FOOT, ADJUSTABLE, FOR 1-1/2" SQUARE TUBING (16 GA OR 18 GA WALL), WITH 3-1/2" SST FLANGE W/HOLES |
| 1    | 1   | 112102   | WELDMENT, CLOSED COMBI FOOT STAND, X.20  |
| ITEM | QTY | PART NO. | DESCRIPTION  |



PARTS LIST

| LABEL  | DESCRIPTION   | PART NO.                  | LOCATION  | LABEL | DESCRIPTION                                      | PART NO. | LOCATION |
|--------|---|---------------------------|-----------|-------|--|----------|----------|
| -A10   | CONTROL BOARD (SM 5010)   | C5019100                  | 3         | -W1   | CABLE, 9 PIN COM.                                | 300533   | 3.C3     |
| -A11   | OPERATION BOARD (BM 5010)   | C5019101                  | 3         | -Y1   | VALVE, CONDENSER, 120VAC<br>NOISE FILTER (RC)    | 300455   | 3.E4     |
| -A12   | PICTO BOARD (OPTION)  | C5019105                  | 3.B1      |       |  | 300407   | 3.E4     |
| -A13   | I.D. MODULE   | C5019102                  | 3.B8      | -Y10  | VALVE ASSY, 2 WAY, 120VAC<br>-Y2 VALVE, DEHUMID. | 300456   | 3.E      |
| -A20   | GAS BOARD (GM5010)  | C5019103                  | 4         |       |  | -        | 3.E      |
| -B1    | WATER LEVEL PROBE   | C5019003                  | 3.A6      |       |  | -        | 3.E      |
| -B3    | CONDENSOR PROBE   | C5016006                  | 3.B4      |       |  | -        | 3.E      |
| -B4    | STEAM GEN PROBE   | C5016006                  | 3.B3      |       |  | 300363   | 3        |
| -B5    | BYPASS PROBE  | C5016006                  | 3.B4      |       |  | -        | 3        |
| -B6    | OVEN PROBE  | C5016006                  | 3.B4      |       |  | -        | 3        |
| -B7.1  | OVEN HI-TEMP THERMOSTAT   | C5001041                  | 5.B4      |       |  | -        | 3        |
| -B7.2  | GEN. HI-TEMP THERMOSTAT   | 1089952                   | 6.B4      |       |  | 300407   | 3        |
| -B8    | GEN. HI-TEMP PROBE  | C5016008                  | 3.B3      | -Y20  | PUMP, RINSING AGENT, 120VAC(CLEANING OPTION)     | 300352   | 3.E7     |
| -B10   | CORE TEMP. PROBE (KTM CTC)  | C5013001                  | 3.B4      | -Y22  | PUMP, CLEANING AGENT, 120VAC(CLEANING OPTION)    | 300352   | 3.E8     |
| -F1.1  | FUSE, 3A  | KE52936-6                 | 2.B3      | -Y23  | PUMP, CLEANING AGENT, 120VAC(CLEANING OPTION)    | 300352   | 3.E8     |
| -F2.1  | FUSE, 1A  | 300418                    | 3.E3      | -Z1   | LINE FILTER 20A                                  | 300472   | 2.B1     |
| -F10   | FUSE, 20A   | 300471                    | 2.B6      |       |  |          |          |
| -G1    | POWER SUPPLY, 12VDC   | 300350                    | 2.C3      |       |  |          |          |
| -H5.1  | OVEN LAMP   | C5005043                  | 3.E3      |       |  |          |          |
| -M1    | MOTOR, CONVECTION   | C50180221                 | 2.E5      |       |  |          |          |
| -M3.1  | COOLING FAN   | C5018023                  | 3.E1      |       |  |          |          |
| -M4    | PUMP, GEN.  | 300506                    | 3.E6      |       |  |          |          |
| -N20   | BURNER ASSY, HOT AIR<br>VALVE, GAS, 120VAC<br>CONTROL, BURNER, 120VAC | -<br>C6016009<br>C6016023 | 5.D3      |       |  |          |          |
| -N21   | BURNER ASSY, GEN.<br>VALVE, GAS, 120VAC<br>CONTROL, BURNER, 120VAC    | -<br>C6016009<br>C6016023 | 6.D3      |       |  |          |          |
| -P1,P2 | FLAME SENSOR  | C4018000                  | 5.E3,6.E3 |       |  |          |          |
| -R20   | IGNITOR, CONV.  | C4018001                  | 5.E4      |       |  |          |          |
| -R21   | IGNITOR, GEN.   | C4018001                  | 6.E3      |       |  |          |          |
| -S1    | SWITCH, CONTROL POWER   | 19993                     | 2.A1      |       |  |          |          |
| -S2    | PRESSURE SWITCH (10,20 UNITS)<br>PRESSURE SWITCH (12,20 UNITS)        | C5013052<br>C5013051      | 3.A5      |       |  |          |          |
| -S7    | DOOR SWITCH   | C5003075                  | 3.A6      |       |  |          |          |
| -T1    | TRANSFORMER, 120V/24V   | 300419                    | 5.C2      |       |  |          |          |
| -T2    | TRANSFORMER, 120V/24V   | 300419                    | 6.C2      |       |  |          |          |
| -U10   | AC DRIVE  | 300462                    | 2.B6      |       |  |          |          |
| -U20   | POWER BURNER ASSY, HOT AIR<br>FAN, BURNER, 120VAC                     | -<br>C5018007             | 5.D6      |       |  |          |          |
| -U21   | POWER BURNER ASSY, GEN.<br>FAN, BURNER, 120VAC                        | -<br>C5018007             | 6.D6      |       |  |          |          |

CONNECTION NUMBERING EXAMPLE



THIS DESIGN DESCRIBES A PROPRIETARY ITEM AND IS THE PROPERTY OF CLEVELAND RANGE. THIS DRAWING IS NOT TO BE COPIED OR USED WITHOUT THE APPROVAL OF CLEVELAND RANGE.

CLEVELAND RANGE, LLC  
1333 East 179th St., Cleveland, Ohio 44110-2574

TITLE  
WIRING DIAGRAM  
OGB 10.20/12.20

VOLTAGE: 120VAC  
WATTAGE: -  
CURRENT: 15A

DRAWN BY  
MJP  
DATE  
1/15/08

DRAWING NO.  
300633

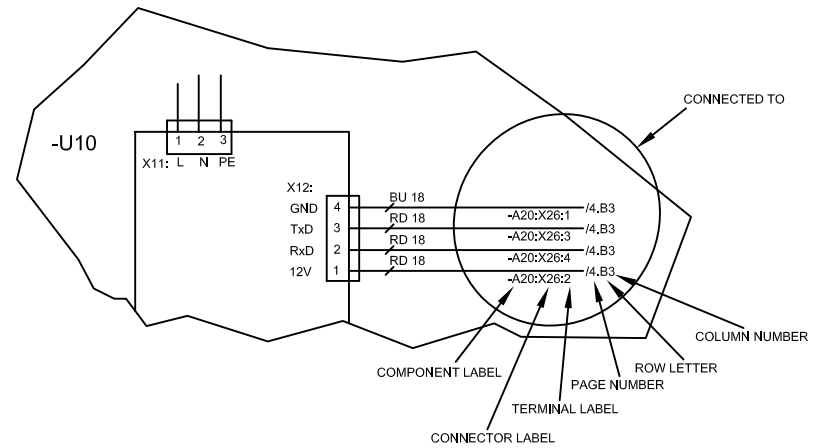
SIZE  
B SHEET 1 OF 9

REV  
C

PARTS LIST

| LABEL | DESCRIPTION   | PART NO.                  | LOCATION | LABEL | DESCRIPTION                                      | PART NO. | LOCATION |
|-------|---|---------------------------|----------|-------|--|----------|----------|
| -A10  | CONTROL BOARD (SM 5010)   | C5019100                  | 3        | -W1   | CABLE, 9 PIN COM.                                | 300533   | 3.C3     |
| -A11  | OPERATION BOARD (BM 5010)   | C5019101                  | 3        | -Y1   | VALVE, CONDENSER, 120VAC<br>NOISE FILTER (RC)    | 300455   | 3.E4     |
| -A12  | PICTO BOARD (OPTION)  | C5019105                  | 3.B1     |       |  | 300407   | 3.E4     |
| -A13  | I.D. MODULE   | C5019102                  | 3.B8     | -Y10  | VALVE ASSY, 2 WAY, 120VAC<br>-Y2 VALVE, DEHUMID. | 300456   | 3.E      |
| -B3   | CONDENSOR PROBE   | C5016006                  | 3.B4     |       |  | -        | 3.E      |
| -B5   | BYPASS PROBE  | C5016006                  | 3.B4     |       |  | -        | 3.E      |
| -B6   | OVEN PROBE  | C5016006                  | 3.B4     |       |  | -        | 3.E      |
| -B7.1 | OVEN HI-TEMP THERMOSTAT   | C5001041                  | 5.B4     |       |  | 300363   | 3        |
| -B10  | CORE TEMP. PROBE (KTM CTC)  | C5013001                  | 3.B4     |       |  | -        | 3        |
| -F1.1 | FUSE, 3A  | KE52936-6                 | 2.B3     |       |  | -        | 3        |
| -F2.1 | FUSE, 1A  | 300418                    | 3.E3     |       |  | -        | 3        |
| -F10  | FUSE, 20A   | 300471                    | 2.B6     |       |  | 300407   | 3        |
| -G1   | POWER SUPPLY, 12VDC   | 300350                    | 2.C3     | -Y20  | PUMP, RINSING AGENT, 120VAC(CLEANING OPTION)     | 300352   | 3.E7     |
| -H5.1 | OVEN LAMP   | C5005043                  | 3.E3     | -Y22  | PUMP, CLEANING AGENT, 120VAC(CLEANING OPTION)    | 300352   | 3.E8     |
| -M1   | MOTOR, CONVECTION   | C50180221                 | 2.E5     | -Y23  | PUMP, CLEANING AGENT, 120VAC(CLEANING OPTION)    | 300352   | 3.E8     |
| -M3.1 | COOLING FAN   | C5018023                  | 3.E1     | -Z1   | LINE FILTER 20A                                  | 300472   | 2.B1     |
| -N20  | BURNER ASSY, HOT AIR<br>VALVE, GAS, 120VAC<br>CONTROL, BURNER, 120VAC | -<br>C6016009<br>C6016023 | 4.D3     |       |  |          |          |
| -P1   | FLAME SENSOR  | C4018000                  | 4.E3     |       |  |          |          |
| -R20  | IGNITOR, CONV.  | C4018001                  | 4.E4     |       |  |          |          |
| -S1   | SWITCH, CONTROL POWER   | 19993                     | 2.A1     |       |  |          |          |
| -S2   | PRESSURE SWITCH (10.20 UNITS)   | C5013052                  | 3.A5     |       |  |          |          |
|       | PRESSURE SWITCH (12.20 UNITS)   | C5013051                  |          |       |  |          |          |
| -S3   | PRESSURE SWITCH (INJECT.)   | C5009063                  | 3.A5     |       |  |          |          |
| -S7   | DOOR SWITCH   | C5003075                  | 3.A6     |       |  |          |          |
| -T1   | TRANSFORMER, 120V/24V   | 300419                    | 4.C2     |       |  |          |          |
| -U10  | AC DRIVE  | 300462                    | 2.B6     |       |  |          |          |
| -U20  | POWER BURNER ASSY, HOT AIR<br>FAN, BURNER, 120VAC                     | -<br>C5018007             | 4.D6     |       |  |          |          |

CONNECTION NUMBERING EXAMPLE



THIS DESIGN DESCRIBES A PROPRIETARY ITEM AND IS THE PROPERTY OF CLEVELAND RANGE.  
THIS DRAWING IS NOT TO BE COPIED OR USED WITHOUT THE APPROVAL OF CLEVELAND RANGE.

**CLEVELAND RANGE, LLC**  
1333 East 179th St., Cleveland, Ohio 44110-2574

TITLE

WIRING DIAGRAM  
OGS 10.20/12.20

VOLTAGE: 120VAC  
WATTAGE: -  
CURRENT: 15A

DRAWN BY

MJP

DATE

1/15/08

DRAWING NO.

300634

SIZE

B

REV

C

SHEET 1 OF 6