

OPERATING and MAINTENANCE INSTRUCTIONS for Cres Cor Refrigerated Cabinet, Model R-171-UA9B

ELECTRICAL CONNECTIONS:

	120 Volt	240 Volt
Current Draw:	9.8 Amps	4.9Amps
Cycles:	60 Hz.	60 Hz
Phase:	Single	Single
NEMA	5-15P	6-15P

HOW TO INSTALL THE CABINET:

1. Remove all packing material from inside the cabinet.
2. INSTALL ALL ANGLES **BEFORE UNIT IS TURNED ON**
 - a. Check the height of the pans or carriers that are going to be used so you can figure how much space you will need between angles.
 - b. Set angle pins in slots in the cabinet; push down.
3. Allow enough clearance around cabinet for air flow.

HOW TO OPERATE:

To Start (See Fig. 1):

1. Turn Switch to **OFF**
2. Plug cord into lower rear of cabinet.
Turn cord connector to the right to lock it.
3. Plug other end of cord into wall outlet.
4. Turn thermostat so arrow points UP (midscale).
5. Turn Power Switch to **ON**. Light will come on and compressor will start.

Hints:

1. Listen closely for the compressor. It will be slightly loud at first, then quiet down.
2. If you do not hear compressor running, *turn Power Switch to OFF right away.* See "Trouble-shooting" (page 3).

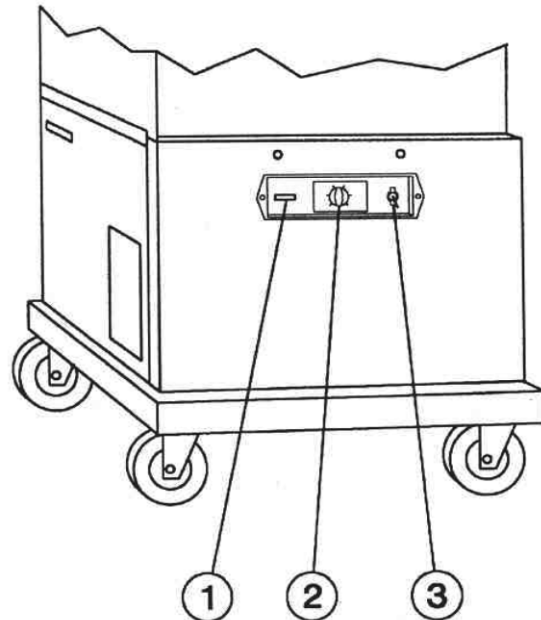


FIGURE 1
1. Pilot Light
2. Thermostat
3. Power Switch

HOW TO OPERATE (continued):

To Run the Unit:

Adjust the thermostat to midscale. The temperature will be 38° F (3° C) to 41° F (5° C).

NOTE: Turn thermostat to the right (clockwise) for colder cabinet temperature; or to the left (counter-clockwise) for a warmer temperature.

The thermostat has an **OFF** position. The compressor will not run when turned **OFF**; but the evaporator fan will continue to circulate the air in the cabinet.

To Shut Unit Off:

Turn Power Switch to **OFF**



5925 Heisley Road • Mentor, OH 44060-1833
 877/CRES COR (273-7267) • 440/350-1100
 Fax: 440/350-7267 • www.crescor.com

Series R-171-B Refrigerated Cabinets	FL-0305-C
Rev. 6 (7/13)	Page 2 of 4

OPERATING and MAINTENANCE INSTRUCTIONS for Cres Cor Refrigerated Cabinet, Model R-171-UA9B

MAINTENANCE:

HOW TO CHARGE AND SERVICE THE REFRIGERATION SYSTEM

The high-side pressure should be approximately 120 PSI;
 low pressure should be approximately 18 PSI at 70° F (21° C) room temperature.
 The charge should be 9.5 ounces of R134A.
 Service valves are located on the condenser assembly.

HOW TO CLEAN THE CABINET:

WARNING!

1. REMOVE POWER CORD FROM CABINET *BEFORE* CLEANING.
2. DO NOT HOSE CABINET WITH WATER.
3. DO NOT GET WATER IN COMPRESSOR COMPARTMENT.
4. DO NOT USE ABRASIVES OR HARSH CHEMICALS.

Cleaning Hints:

1. Wipe up spills as soon as possible.
2. Clean the cabinet regularly to avoid heavy dirt build-up.
3. Clean a test spot with cleaner.
4. Follow manufacturer's directions on the cleaner.
5. Do not mix cleaners.
6. Avoid drips and splashes.

	Soil	Cleaner	Method
CABINET (Aluminum)	Dirt	Mild Detergent* and hot water, or mild abrasive cleaner.	1. Wipe with soft, damp cloth. 2. Rinse with hot water. 3. Wipe Dry.
		Steam (no strong alkaline additive)	1. Rinse after steam cleaning. 2. Wipe Dry
	Fingerprints, grease, oil	Mild Detergent* and hot water	1. Wipe with soft, damp cloth. 2. Rinse with hot water. 3. Wipe Dry.
		Chemical oven cleaner for aluminum	Follow oven cleaner manufacturer's instructions
	Water Spots	Mild abrasive cleaner. Oily or waxy cleaner.	Apply with soft, clean cloth. Wipe with damp cloth.

**Mild detergents include soaps and non-etching cleaners.*



5925 Heisley Road • Mentor, OH 44060-1833
 877/CRES COR (273-7267) • 440/350-1100
 Fax: 440/350-7267 • www.crescor.com

Series R-171-B Refrigerated Cabinets	FL-0305-C
Rev. 6 (7/13)	Page 3 of 4

OPERATING and MAINTENANCE INSTRUCTIONS for Cres Cor Refrigerated Cabinet, Model R-171-UA9B

HOW TO REVERSE DOOR HARDWARE FOR OPPOSITE HAND:

1. Pop off hinge covers with a screwdriver.
2. Open door and lift up to remove door from cabinet.
3. Unscrew and re-mount the hinges and latch strike to the opposite sides of the cabinet.
4. Remove the door hinges and the door handle; remount in the same hole patterns on the opposite sides of the door.
5. Plug all the extra holes with screws.
6. Put door onto cabinet and snap on the hinge covers.

TROUBLE-SHOOTING GUIDE

Thermostat is a constant cut-in type. It is designed to not turn on (cut-in) until evaporator coil reaches 38-41°F (3-5° C).

Unit Condition:

Unit is plugged in. Switch and Thermostat are *ON*.

Failure

Power light off
 Compressor off

 Evaporator fan on,
 Power light on and
 Compressor off

Compressor on and
 cabinet not cooling

Probable Cause

Power Cord
 Power supply down
 Thermostat defective
 Defective Start Relay
 Defective high-limit
 thermostat
 Low charge
 Frost build-up on
 evaporator coil
 Evaporator fan defective
 Thermostat defective
 Blocked capillary tube

Failure

Compressor starts and
 stops; cabinet not
 cooling

Noisy compressor

Probable Cause

Blocked capillary tube
 Low Charge
 Faulty start capacitor
 Faulty start relay
 Shorted compressor
 winding
 Low charge
 Defective

NOTES:

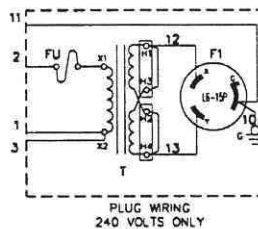
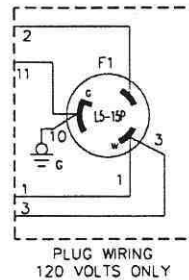
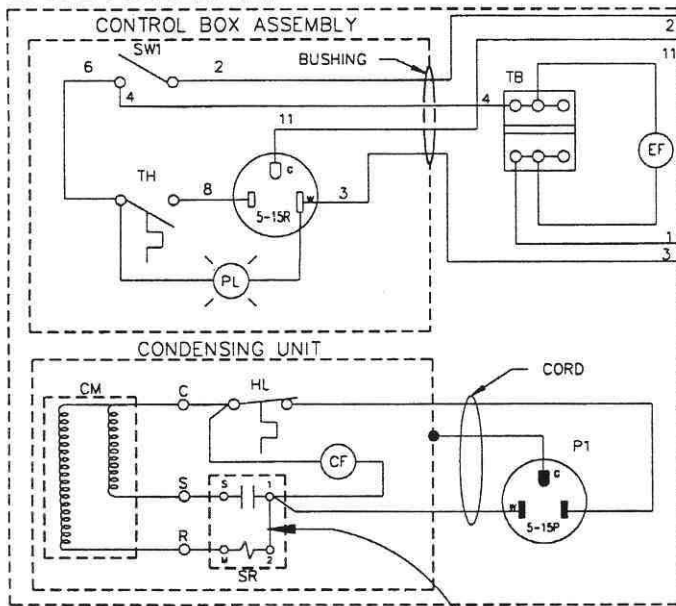
1. For replacement of the electrical parts, refer to our list of authorized service centers (FI-1400).
2. Instructions for replacing parts are included with the replacement part.

OPERATING and MAINTENANCE INSTRUCTIONS for Cres Cor Refrigerated Cabinet, Model R-171-UA9B

REPLACEMENT PARTS:

Description	Part Number	Description	Part Number
Condenser/Compressor Ass'y	0854-037-K	Fuse Holder (240 Volt)	0807-048
Cord Set (120 Volt)	0810-031-1	Thermostat Kit	0848-061-K
Cord Set (240 Volt)	0810-032-01	Thermometer Kit	5238-009-K
Evaporator Ass'y	1416-067	Transformer, step down (230/120 Volt)	0769-175
Fan Motor	0769-041	Universal Angle, Wire	0621-292
Fan Motor Blade	0769-023	Flanged Inlet (120 Volt)	0713-011
Hinge Kit	0519-087-K	Flanged Inlet (240 Volt)	0713-012
Pilot Light "Power ON"	0766-048	Terminal Block	0852-091
Switch, ON/OFF (120 Volt)	0808-011	Gasket, Magnetic	0861-202
Fuse (240 Volt)	0807-133	Universal Angle	0692-095-K

BASE ASSEMBLY



LEGEND

- C Coil
- CF Condenser Fan Motor
- CM Compressor Motor
- EF Evaporator Fan Motor
- FI Flanged Inlet- Power In
- GRD Chassis Ground
- HL Compressor Motor High Temp. Limit
- P1 Condenser Ass'y. Plug
- PL Power "ON" Pilot Lamp
- R1 Condenser Ass'y. Receptacle
- SR Compressor Start Relay
- SW1 Power "ON/OFF" Switch
- TH Thermostat, Cold Control
- TB Terminal Block
- T Transformer (240 Volts Only)
- FU FUSE (15 Amp) (240 Volts Only)

NOTE: Jumper between Terminals 1 and 2 may be replaced by a capacitor on some condensing units.