

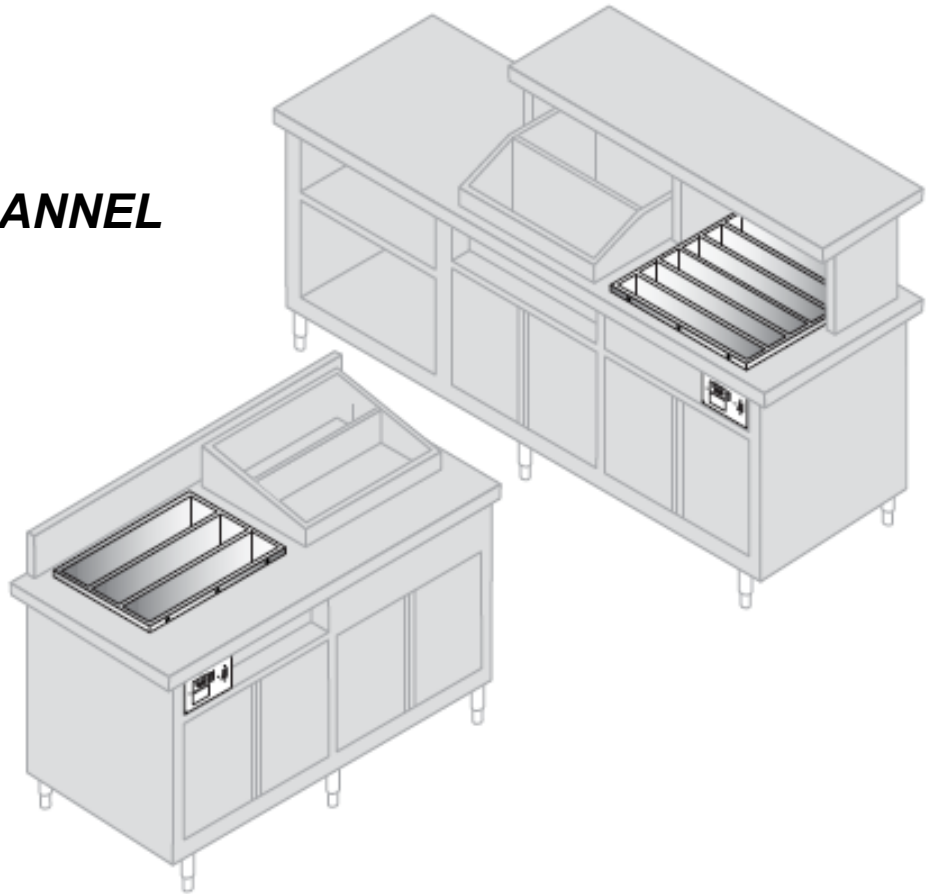


Your Solutions Partner

# Illustrated Parts List

## **HEATED DRY CHANNEL**

**MODEL**  
**HDC3/HDC6**



---

*This manual is Copyright © 2019 Duke Manufacturing Co. All rights reserved.  
Reproduction without written permission is prohibited. Duke is a registered  
trademark of the Duke Manufacturing Co.*

## **Duke Manufacturing Co.**

**2305 N. Broadway • St. Louis, MO 63102**

**800.735.3853 • 314.231.1130**

**Fax: 314-231-5074**

**[www.dukemfg.com](http://www.dukemfg.com)**

## TABLE OF CONTENTS

HOW TO DETERMINE MANUFACTURE DATE FROM FROM DUKE EQUIPMENT'S SERIAL NUMBERS.....	3
TUB AND CHANNEL ASSEMBY .....	4
DRY CHANNEL CONTROL BOARD.....	5
DRY CHANNEL RELAY BOX.....	6
DRY CHANNEL RELAY BOX ASSEMBLY REV 5.1.....	8
RETROFIT TOGGLE SWITCH .....	10
CONTROLLER ASSEMBLY.....	11

## How to Determine Manufacture Date from Duke Equipment Serial Numbers

All units currently manufactured in St. Louis and Sedalia, Missouri (After 2/1/2013):

08 03 0202

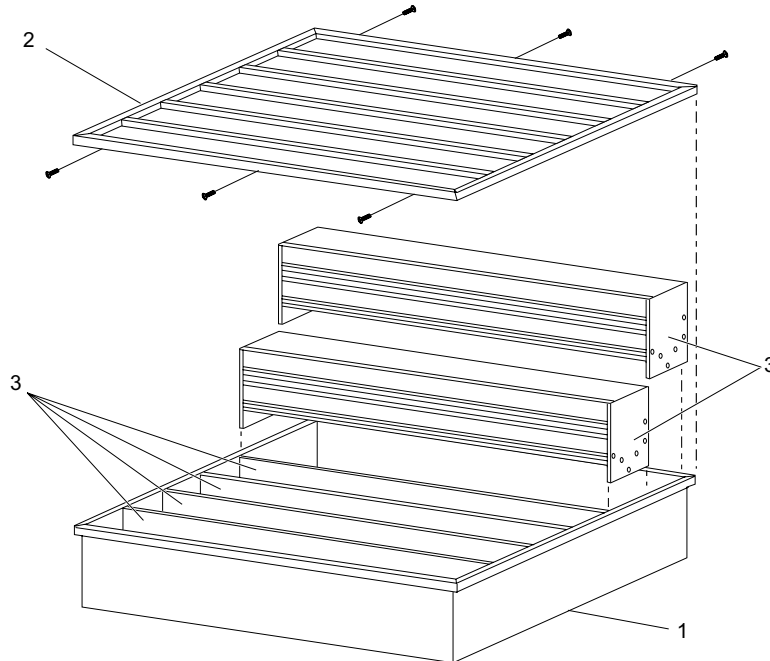
(Example: 08030202 = Indicates the unit was manufactured in August of 2003)

Units Manufactured in St. Louis, Missouri (Before 2/1/2013):

30 IF AA 0123

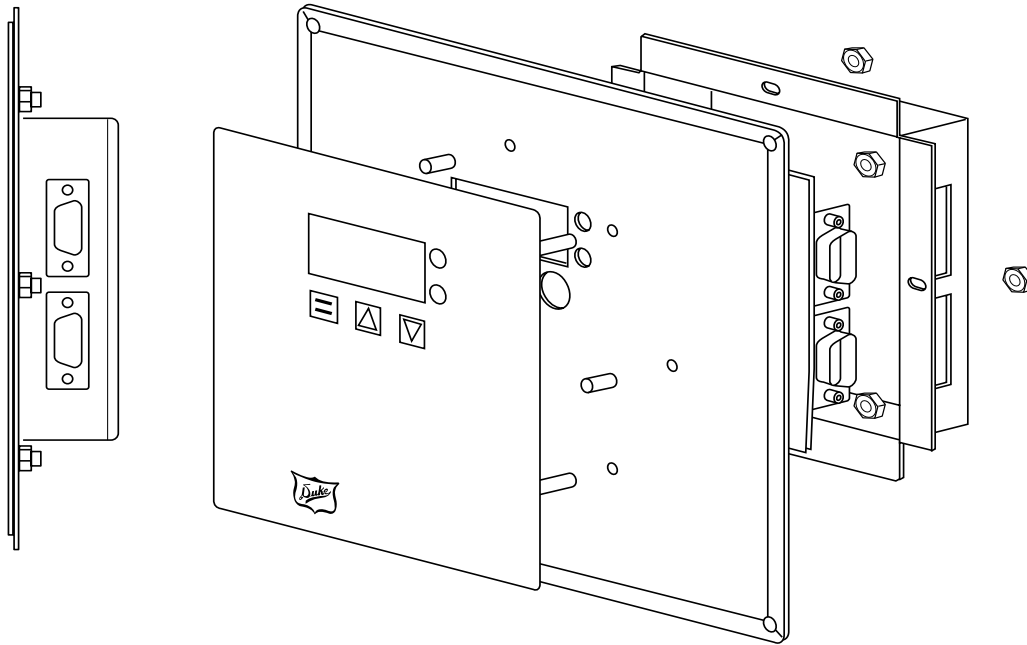
<p><u>Unit Identification</u></p> <p>10 = 5/9                  20 = 6/13 &amp; E-Series                  30 = 6/18 &amp; 3/9                  90 = FBB                  94 = FWM                  95 = IRHU                  99 = Dry Channel</p> <p><u>Year of Manufacture</u></p> <p>A = 1                  B = 2                  C = 3                  D = 4                  E = 5                  F = 6                  G = 7                  H = 8                  I = 9                  J = 0</p>	<p>(Examples)</p> <p>(JJ = 2000)                  (JA = 2001)                  (JB = 2002)</p>	<p><u>Sequential Number</u></p> <p><u>Month of Manufacture</u></p> <p>JA = January                  JB = February                  JC = March                  JD = April                  JE = May                  JF = June                  JG = July                  JH = August                  JI = September                  AJ = October                  AA = November                  AB = December</p>
---	--	--

### TUB AND CHANNEL ASSEMBLY



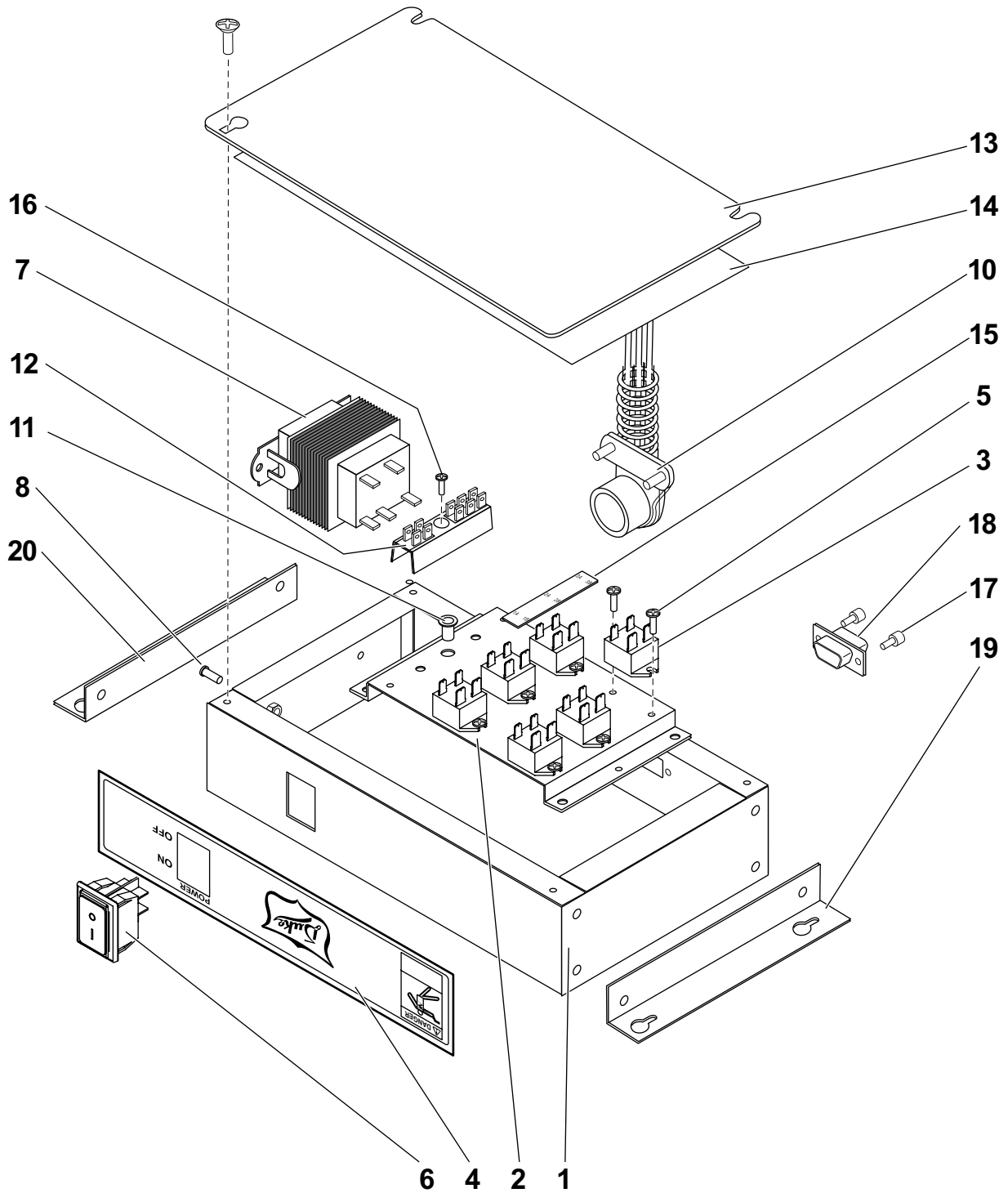
ITEM	PART NO.	DESCRIPTION	HDC3	HDC4	HDC6
1	553415	Tub Assy, 3 Channel, Single Zone, Dry Channel, Rev 6.1	X		
1	553459	Tub Assy, 3 Channel, Single Zone, Generic DC, Rev 5.1	X		
1	553262	Tub Assy, 4 Channel, Dual Zone, Dry Channel, Rev 5.1		X	
1	553263	Tub Assy, 6 Channel, Dual Zone, Dry Channel, Rev 5.1			X
1	553417	Tub Assy, 6 Channel, Single Zone, Dry Channel, Rev 6.1			X
1	553505	Tub Assy, 6 Channel, Single Zone, Generic DC, Rev 5.1			X
2	553411	Top, 3 Channel, Dry Channel	X		
2	553246	Top, 4 Channel, Dry Channel		X	
2	553412	Top, 6 Channel, Dry Channel			X
3	<a href="#">553414</a>	Center Channel, Single Zone, 3/6 Dry Channel, Rev 6.1	X		X
3	553458	Generic Channel, Single Zone, 3/6 Dry Channel, Rev 5.1	X		X
3	553284	Front/Back Channel, Dual Zone, 4 Dry Channel, Rev 5.1		X	
3	553285	Center Channel, Dual Zone, 4 Dry Channel, Rev 5.1		X	
3	553268	Front/Back Channel, Dual Zone, 3/6 Dry Channel, Rev 5.1	X		X
3	553269	Center Channel, Dual Zone, 3/6 Dry Channel, Rev 5.1	X		X
3	<a href="#">553290</a>	Kit, Dual Zone, HDC3/6 Center Channel Retrofit (Ref-553269)	X		X
3	<a href="#">553291</a>	Kit, Dual Zone, HDC4 Center Channel Retrofit (Ref-553285)		X	
Not Shown	<a href="#">553510</a>	Element Kit, 700W, Dual Zone, Rev 5.1 ( <a href="#">218968 Element</a> )	X		X
Not Shown	<a href="#">553546</a>	Element Kit, 700W, Single Zone, Rev 5.1 & 6.1 ( <a href="#">228809 Element</a> )	X		X
Not Shown	553535	Element Kit, 850W, Dual Zone, Rev 5.1 ( <a href="#">218969 Element</a> )		X	
Not Shown	<a href="#">228930</a>	Gasket, Dry Channel 3	X		
Not Shown	228931	Gasket, Dry Channel 6			X
Not Shown	<a href="#">553512</a>	Kit, High Limit Replacement (Ref- <a href="#">228808</a> )	X	X	X
Not Shown	<a href="#">553511</a>	Kit, RTD Replacement (Ref- <a href="#">228807</a> )	X	X	X
Not Shown	551148	Ground Bar	X	X	X
Not Shown	218985	Cable, Grounding	X	X	X

## DRY CHANNEL CONTROL BOARD



PART NO.	DESCRIPTION
<a href="#">553386</a>	Kit, Dual Zone Control Retrofit, 3/4/6 Channel (Ref-218880)
<a href="#">228881</a>	Control Board, Single Zone, 6 Channel
<a href="#">228888</a>	Control Board, Single Zone, 3 Channel
<a href="#">553531</a>	Kit, Mylar Replacement, Dual Zone Control Board (Ref-228823)
<a href="#">553532</a>	Kit, Mylar Replacement, Single Zone Control Board, 3 Channel (Ref-228824)
<a href="#">553533</a>	Kit, Mylar Replacement, Single Zone Control Board, 6 Channel (Ref-228825)

# DRY CHANNEL RELAY BOX

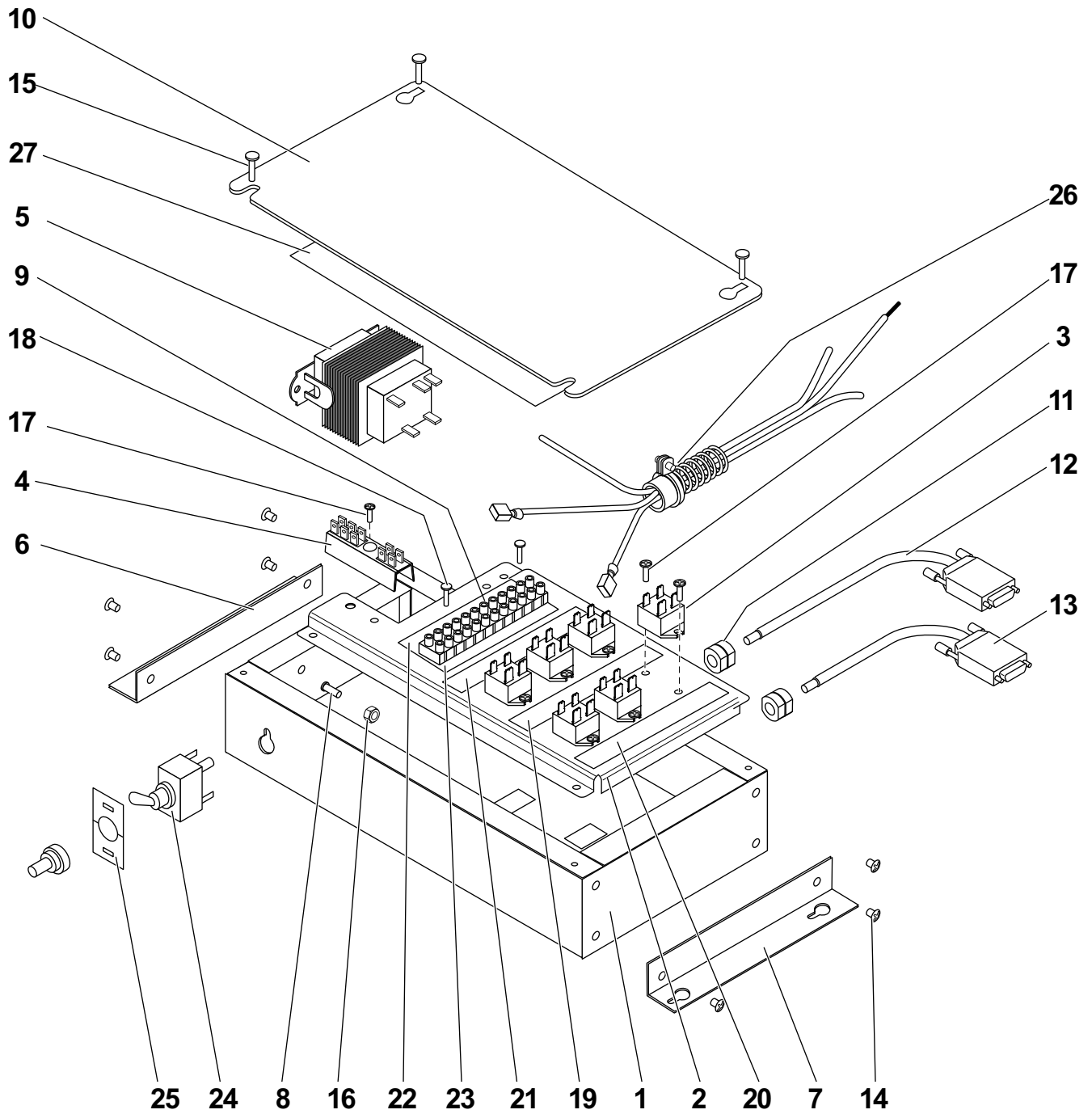


**DRY CHANNEL RELAY BOX**

ITEM	QTY.	PART NO.	DESCRIPTION
1	1	553075	Box, Relay with Switch
2	1	553154	Plate, Relay Mounting
3	6	<a href="#">218828</a>	Relay, Mini No 20A-240V-24V
4	1	218817	Label, Relay Box
5	13	<a href="#">213032</a>	Screw 8 X 1/2" TEK PHIL
6	1	<a href="#">553466</a>	Switch, Lighted, DPST 16GA @ 125V
7	1	<a href="#">218829</a>	Transformer, 208/240V Pri, 24V Sec
8	1	213403	Stud PEM 8-32 X 1/2" SS
9	1	<a href="#">147351</a>	Nut Hex 8-32 HZ-T KEPS
10	1	171215	Conduit, Assembly Power Supply
11	1	213216	Nutsert, ALM 832-80
12	1	<a href="#">218805</a>	Terminal Block
13	1	171171SED	Top, Relay Box
14	1	218819	Wiring Diagram
15	1	218820	Label, Relays
16	1	<a href="#">404886</a>	8-32 X 1/2" RD HD PHIL SS
17	2	218830	Hardware, Connector
18	1	218875	Harness, DSUB Relay (No Longer Available)
19	1	553202	Angle, Mounting Bracket, Left
20	1	553203	Angle, Mounting Bracket, Right
Not Shown	1	218812	Harness, Terminal Block
Not Shown	1	<a href="#">553385</a>	Complete Wire Harness Kit – Models with Serial Numbers Prior to 11070000
Not Shown	1	218911	Harness, Wire Heater Assembly
Not Shown	1	<a href="#">553386</a>	Complete Wire Harness Kit – Models with Serial Numbers Prior to 04070000

Note: HDC4 and HDC6 modules require two Relay Boxes.

### DRY CHANNEL RELAY BOX ASSEMBLY REV 5.1



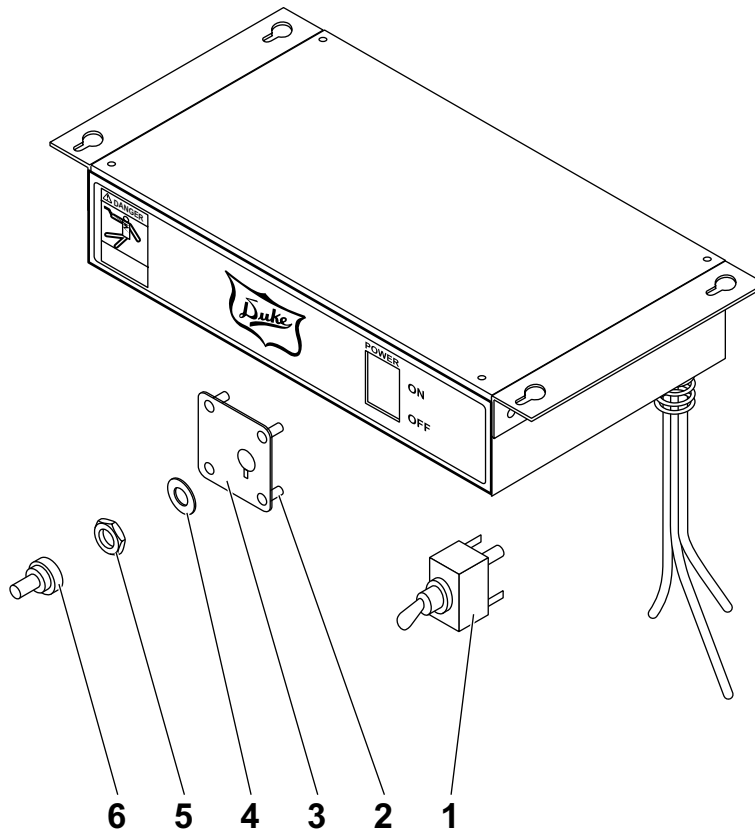


**DRY CHANNEL RELAY BOX ASSEMBLY REV 5.1**

ITEM	QTY.	PART NO.	DESCRIPTION
1	1	553286	Box, Relay with Switch
2	1	553256	Plate, Relay Mounting
3	6	<a href="#">218828</a>	Relay, Mini No 20A-240V-24V
4	1	<a href="#">218805</a>	Terminal Block
5	1	<a href="#">218829</a>	Transformer, 208/240V Pri, 24V Sec
6	1	553202	Angle, Mounting Bracket, Left
7	1	553203	Angle, Mounting Bracket, Right
8	1	213403	Stud, PEM, 8-32 X 1/2", SS
9	1	218902	Barrier Strip
10	1	<a href="#">553257</a>	Top, Relay Box
11	2	218904	Bushing, HEYCO 1217
12	1	<a href="#">218918</a>	Harness, HD15 for RTD's Dry Channel Hardware
13	1	<a href="#">218917</a>	Harness, DSUB9/Relays for Dry Channel Hardware
	1	<a href="#">228822</a>	Harness, Relay 6 Channel Single Zone Unit
14	12	213166	Pop Rivet, 5/32 X 1/8 SS
15	4	<a href="#">213196</a>	Screw, 8-32 X 1/2" PAN PHIL
16	4	<a href="#">147351</a>	Nut, Hex, 8-32 HZ-T KEPS
17	13	<a href="#">213032</a>	Screw, 8 X 1/2" TEK PHIL
18	2	213427	Screw, 4-40 X 1/2" FPPH
19	1	218919	Label, Relay Wiring
20	1	218919	Label, Relay Wiring
21	1	218919	Label, Relay Wiring
22	1	218919	Label, RTD Color Code
23	1	218919	Label, RTD Numbers
24	1	<a href="#">553466</a>	Switch, Toggle, NKK, 25 Amp
25	1	553447	Plate, ON – OFF, 12MM
26	2	218946	Conduit, Assembly, Power Supply Relay Box, Hardwired
Not Shown	1	228883	Harness, Wire HDC Term. Block Hardware Single Zone
Not Shown	1	218819	Wiring Diagram

Note: HDC4 and HDC6 modules require two Relay Boxes.

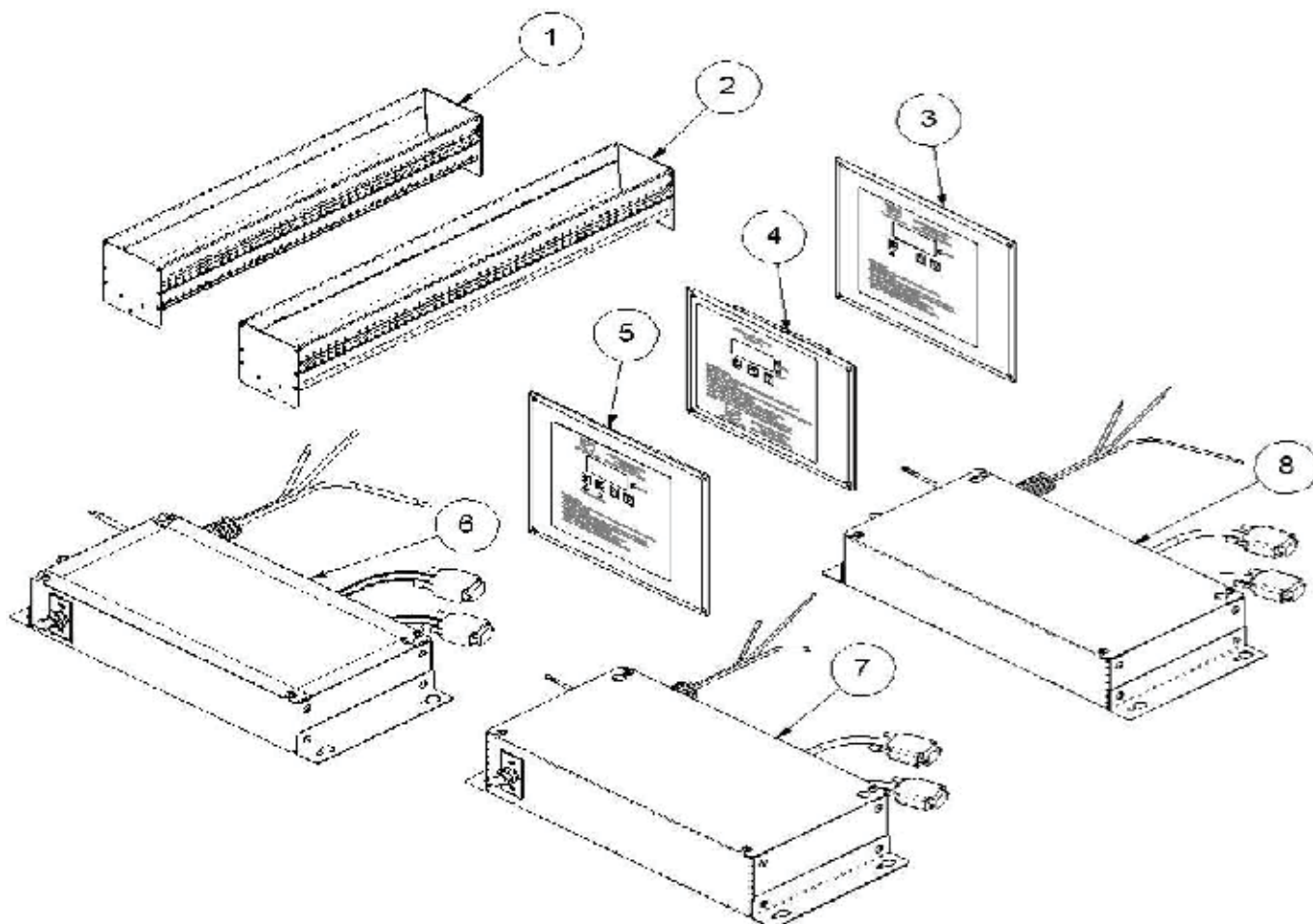
## RETROFIT TOGGLE SWITCH



ITEM	QTY.	PART NO.	DESCRIPTION
1	1	<a href="#">218963</a>	Switch, Toggle, NKK, 25 Amp
2	6	213403	Stud, PEM 8-32 x 1/2, SS
3	1	553319	Plate, Switch, Retrofit
4	1	None	Washer (Included w/Toggle Switch)
5	1	None	Nut, Hex Jam (Included w/Toggle Switch)
6	1	218964	Boot, Splashproof, for Toggle
Not Shown	1	<a href="#">553466</a>	Kit, Retrofit Toggle Switch

Note: HDC4 and HDC6 modules require two Retrofit Toggle Switches.

## CONTROLLER ASSEMBLY



ITEM	PART NO.	DESCRIPTION	HDC3	HDC4	HDC6
1	<a href="#">553290</a>	Kit, Dual Zone, HDC6 Center Channel Retrofit (Ref-553269)			X
2	<a href="#">553291</a>	Kit Dual Zone , HDC4 Center Channel Retrofit (Ref-553285)			X X
3	<a href="#">228888</a>	Control Board, Single Zone, 3 Channel	X		
4	<a href="#">553386</a>	Kit, Dual Zone Controller Retrofit (Ref-218880)	X	X	X
5	<a href="#">228881</a>	Control Board, Single Zone, 6 Channel			X
6	553443	Relay Box W/Switch, Single Zone, 3 Channel	X		
	553289	Relay Box W/Switch, Dual Zone, 4 Channel		X	
7	<a href="#">553444</a>	Relay Box W/Switch, Single Zone, 6 Channel			X
8	553484	Relay Box, No Switch, Hardwired, Single Zone, 3 Channel (1 Production Unit)	X		



## **Duke Manufacturing Co.**

**2305 N. Broadway • St. Louis, MO 63102**

**800.735.3853 • 314.231.1130**

**Fax: 314-231-5074**

**[www.dukemfg.com](http://www.dukemfg.com)**