

| | | | |
|---------------------|-----------|--------------------|-------------|
| ONNERA GROUP | FORMATO | CLAVE: | FID-16 |
| | DESPIECES | FECHA DE REVISIÓN: | 17-Feb-2015 |
| | | NO. REVISIÓN: | A |

Control de Documento

A. Revisiones y aprobaciones del documento.

| Actividad | Puesto | Nombre | Fecha |
|-----------------|-------------------------|----------------------|----------|
| Elaboró: | Ing. de Producto | Raúl Santiago | 03/07/15 |
| Revisó: | Dir. Calidad y Producto | Alejandro Montelongo | 03/07/15 |
| Aprobó: | Dir. Calidad y Producto | Alejandro Montelongo | 03/07/15 |

B. Descripción de cambios

| Fecha | Rev. | Solicitante | Naturaleza del cambio |
|----------|------|--------------|--|
| 15/12/15 | A | Daniel Perez | Actualizar Motor Electronico, Resistencia Goteo e Imagen Desague 60° / Updated Electronical Fan, Heater & Fitting. |
| | | | |
| | | | |
| | | | |
| | | | |

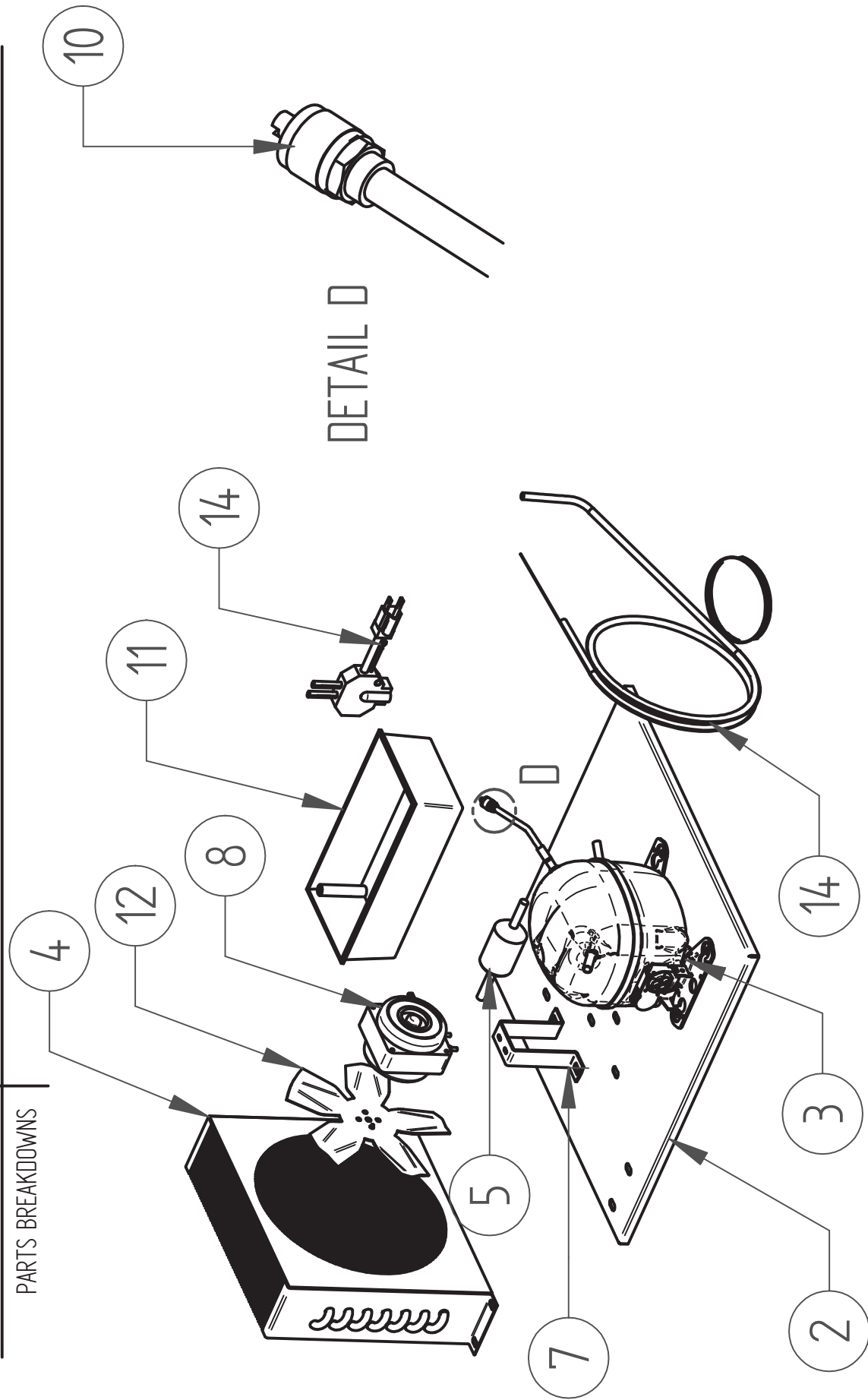
NO IMPRIMIR 1^{er} HOJA "CONTROL DOCUMENTAL"

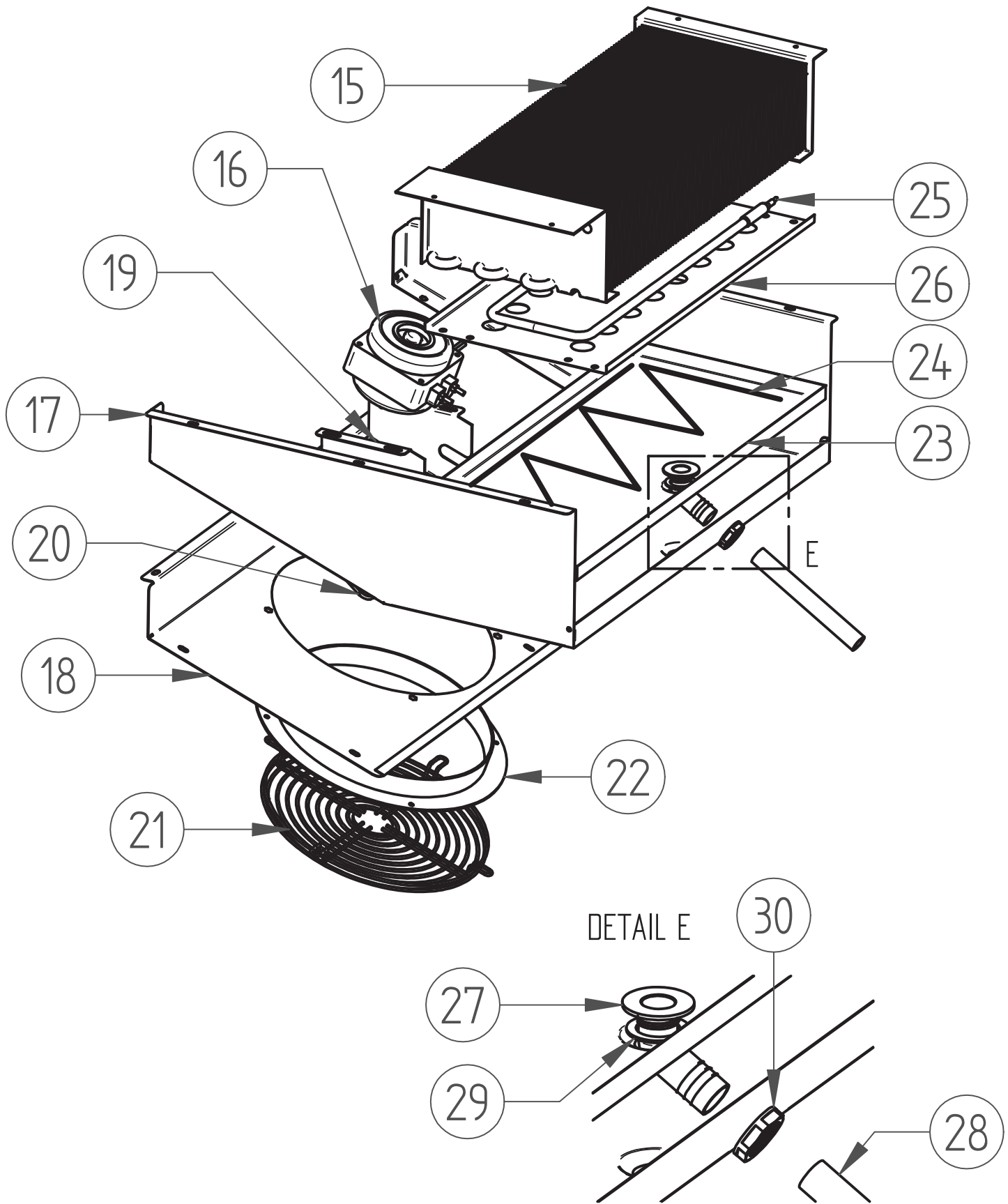
IMPRIMIR APARTIR DE LA 2^{DA} HOJA



DESPIECE

PARTS BREAKDOWNS





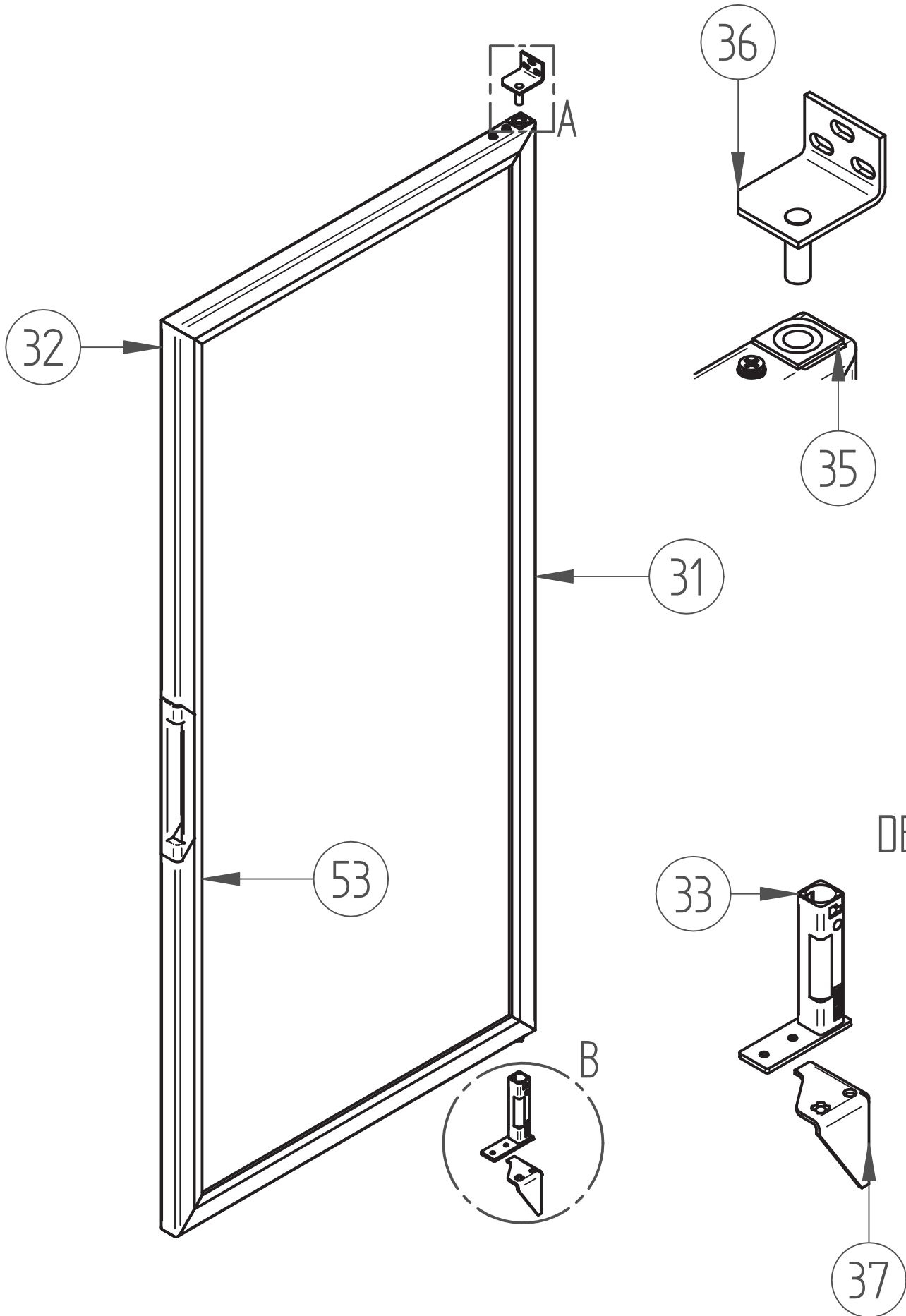
FAGOR

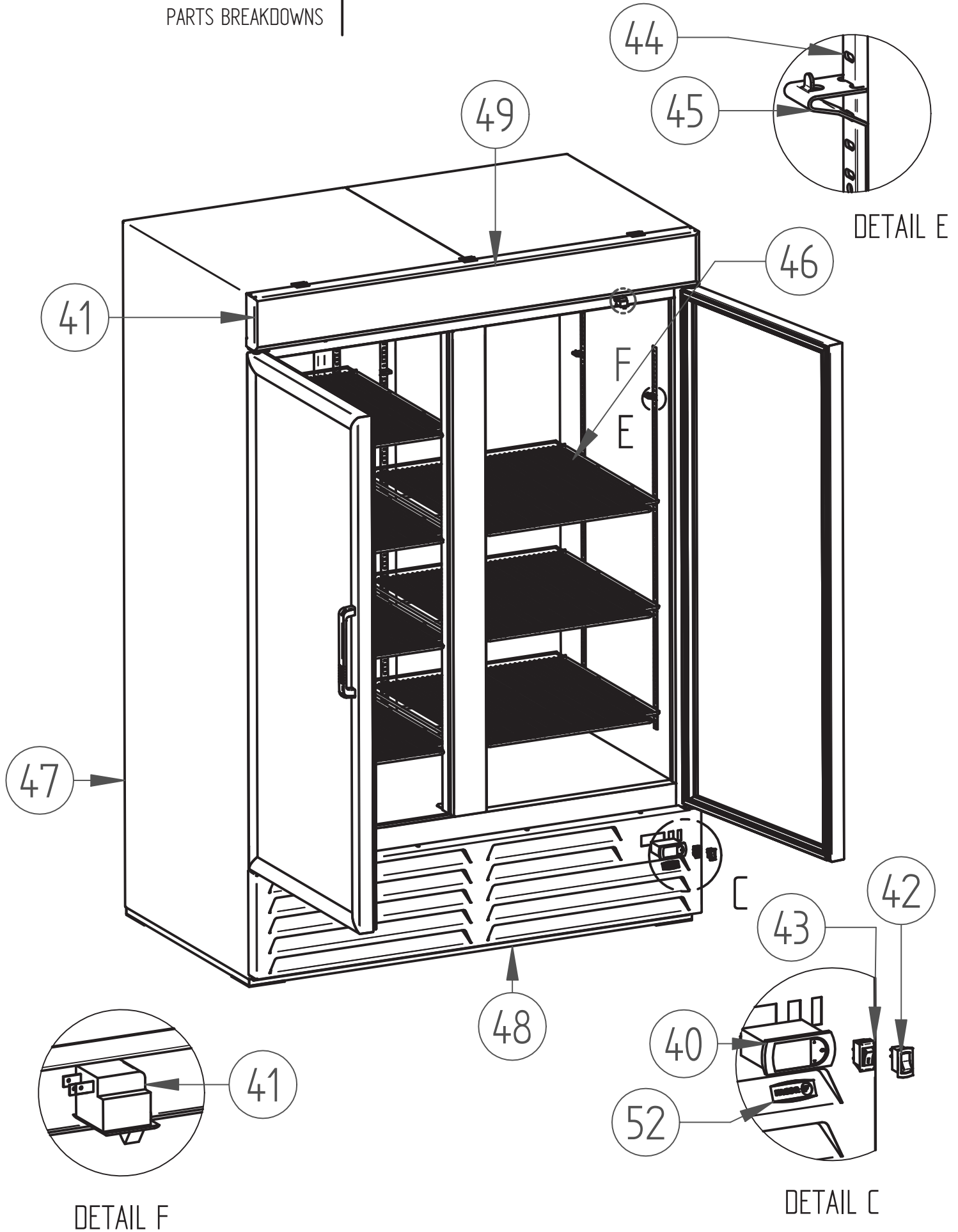


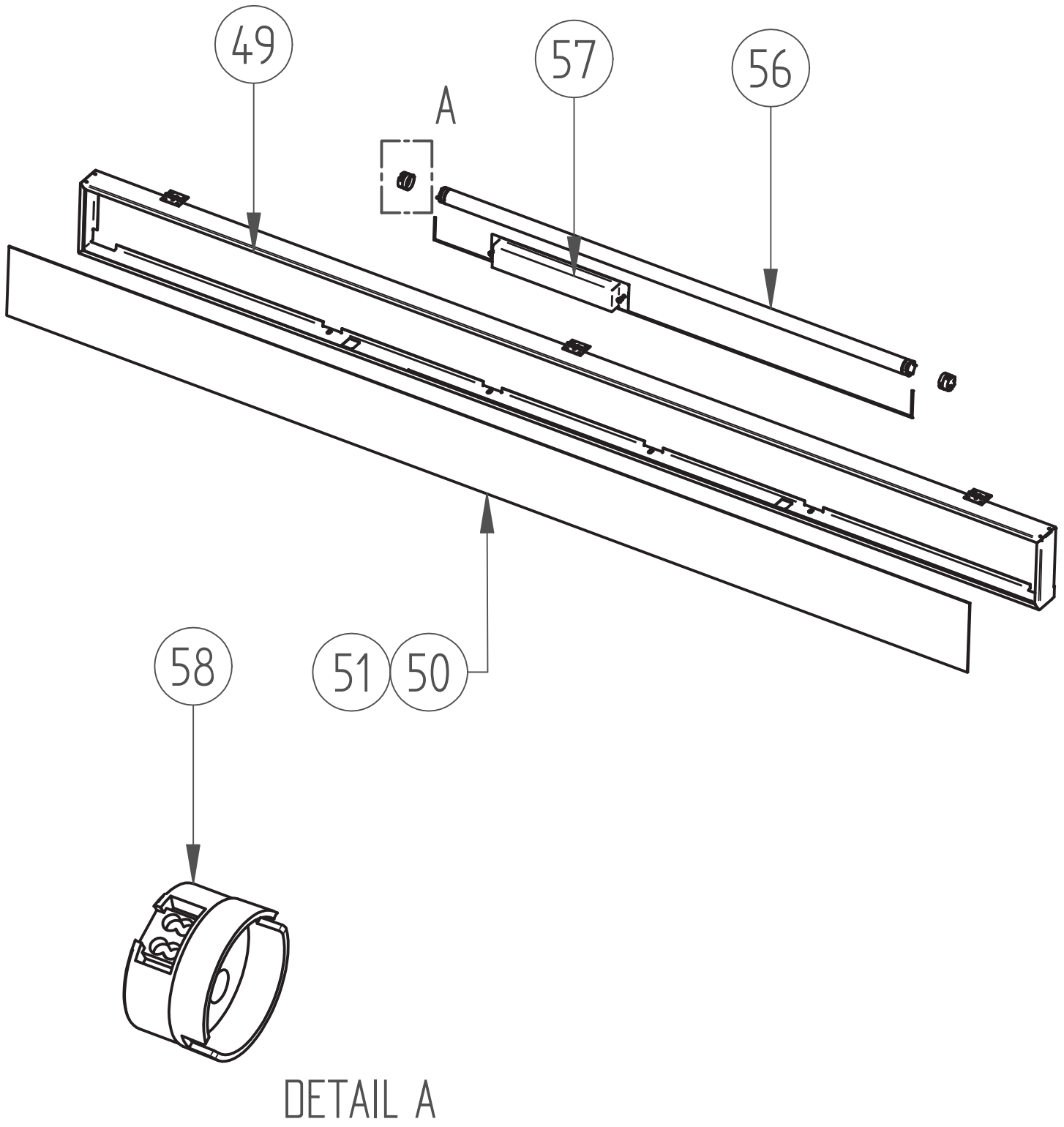
DESPIECE

PARTS BREAKDOWNS

THIS DOOR INCLUDE HEATER







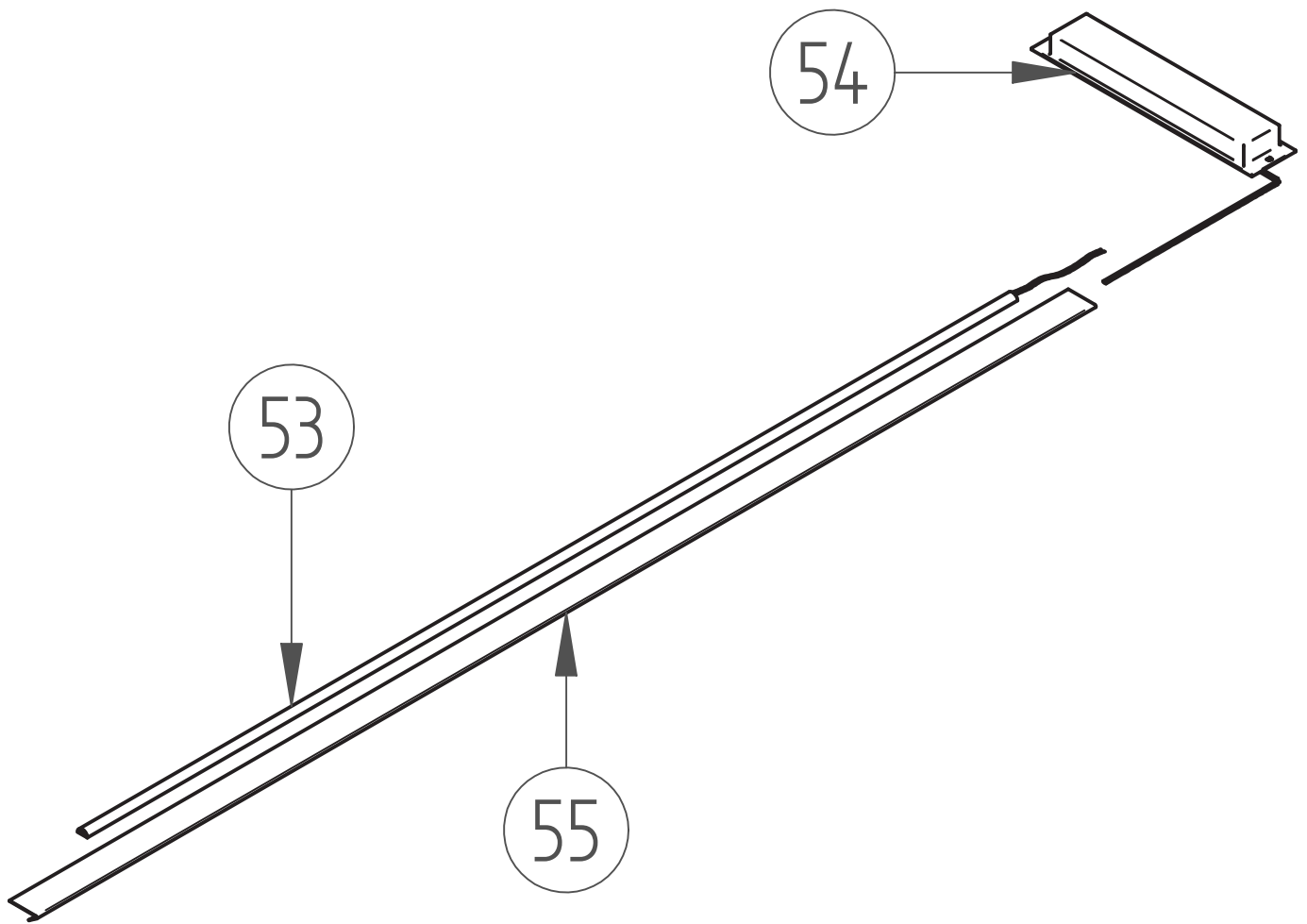
DETAIL A

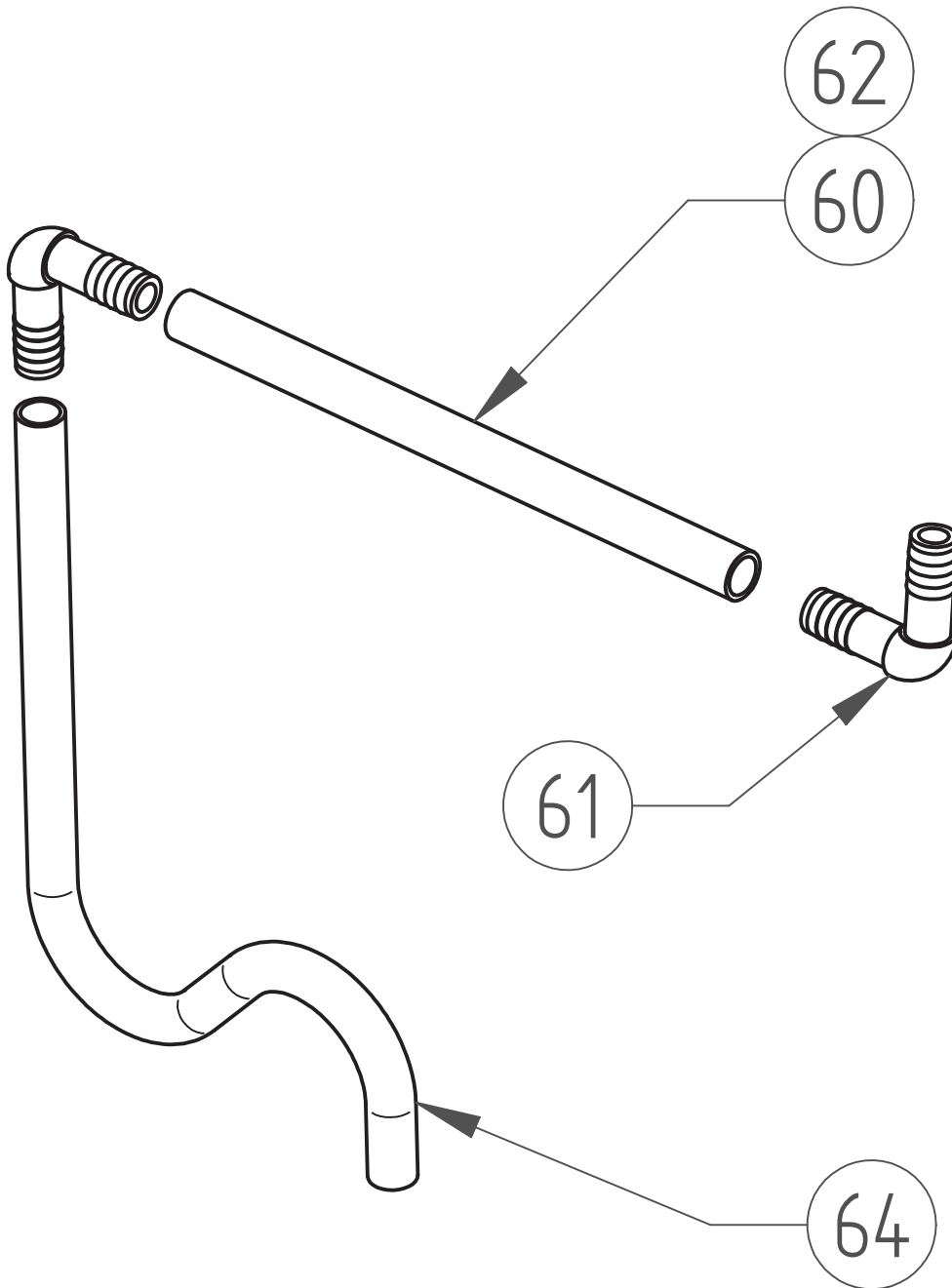
FAGOR



DESPIECE

PARTS BREAKDOWNS





| # ITEM | CODE CÓDIGO | DESCRIPTION | DESCRIPCIÓN | FM-16F | FMD-23F | FMD-37F |
|--|----------------|-------------------------|----------------------------|----------|----------|----------|
| Castors & Legs / Ruedas & Tacones | | | | | | |
| 1 | 6003010012 | LEVELER | NIVELADOR | - | - | - |
| Condensing Units / Unidades de Condensación | | | | | | |
| A17301M0059 | | CONDENSING UNIT | UNIDAD CONDENSACION | 1 | 1 | |
| 2 | A10917M0295 | DECK | BANCADA | 1 | 1 | |
| 3 | 602101M0017 | COMPRESSOR 115V | COMPRESOR 115V | 1 | 1 | |
| | 602101M0036 | START KIT 115V | KIT ARRANQUE 115V | 1 | 1 | |
| 4 | 602902M0011 | CONDENSER | CONDENSADOR | 1 | 1 | |
| 5 | 604701M0005 | FILTER | FILTRO | 1 | 1 | |
| 7 | 603301M0156 | FAN SUPPORT | SOPORTE VENTILADOR | 1 | 1 | |
| 8 | 602105M0003 | FAN | VENTILADOR | 1 | 1 | |
| 9 | 602139M0008 | POWER CORD | CORDON TOMACORRIENTE | 1 | 1 | |
| 10 | 6021310003 | SERVICE VALVE | VALVULA OBUS | 1 | 1 | |
| 11 | 6003010023 | AUTOMATIC PAN TRY | BANDEJA EVAPORACION | 1 | 1 | |
| 12 | 602105M0014 | FAN BLADE 9" | ASPA 9" | 1 | 1 | |
| 13 | 600701M0019 | HEAT EXCHANGER | INTECAMBIADOR | 1 | 1 | |
| 14 | M12145M0001 | POWER CORD (SPIDER HUB) | ARAÑA CONEXIONES | 1 | 1 | |
| | M10702M0013 | CAP TUBE | TUBO CAPILAR | 1 | 1 | |
| A17301M0043 | | CONDENSING UNIT | UNIDAD CONDENSACION | | | 1 |
| 2 | A10917M0295 | DECK | BANCADA | | | 1 |
| 3 | 602101M0100 | COMPRESSOR 115V | COMPRESOR 115V | | | 1 |
| | 602101M0106 | START KIT 115V | KIT ARRANQUE 115V | | | 1 |
| 4 | 602902M0011 | CONDENSER | CONDENSADOR | | | 1 |
| 5 | 604701M0005 | FILTER | FILTRO | | | 1 |
| 7 | 603301M0156 | FAN SUPPORT | SOPORTE VENTILADOR | | | 1 |
| 8 | 602105M0022 | FAN | VENTILADOR | | | 1 |
| 9 | 602139M0008 | POWER CORD | CORDON TOMACORRIENTE | | | 1 |
| 10 | 6021310003 | SERVICE VALVE | VALVULA OBUS | | | 1 |
| 11 | 6003010023 | AUTOMATIC PAN TRY | BANDEJA EVAPORACION | | | 1 |
| 12 | 602105M0014 | FAN BLADE 9" | ASPA 9" | | | 1 |
| 13 | 600701M0015 | HEAT EXCHANGER | INTECAMBIADOR | | | 1 |
| 14 | M12145M0001 | POWER CORD (SPIDER HUB) | ARAÑA CONEXIONES | | | 1 |
| | M10702M0014 | CAP TUBE | TUBO CAPILAR | | | 1 |
| Evaporation Units / Unidades de Evaporación | | | | | | |
| A17101M0085 | | EVAPORATION UNIT | UNIDAD EVAPORACION | 1 | 1 | |
| 15 | 602901M0022 | EVAPORATOR COIL | EVAPORADOR | 1 | 1 | |
| 16 | 602105M0003 | FAN | VENTILADOR | 1 | 1 | |
| 17 | A10905M0463 | EVAPORATION TRAY | BANDEJA EVAPORACION | 1 | 1 | |
| 18 | A10905M0464 | EVAPORATION TRAY COVER | TAPA CUBIERTA EVAPORADOR | 1 | 1 | |
| 19 | A10905M0461 | FAN BRACKET | SOPORTE VENTILADOR | 1 | 1 | |
| 20 | 600305M0074 | FAN BLADE 8" | ASPA 8 " | 1 | 1 | |
| 21 | 602713M0002 | FAN GRID | REJILLA VENTILADOR | 1 | 1 | |
| 22 | 600709M0003 | FAN SUPORT | ARO CONDUCTO | 1 | 1 | |
| 23 | A10905M0493 | DRAIN TRAY | BANDEJA DESAGUE | 1 | 1 | |
| 24 | 602125M0014 | DRAIN HEATER | RESISTENCIA GOTEIO | 1 | 1 | |
| 25 | 602125M0069 | DEFROST HEATER | RESISTENCIA DESHIELO | 1 | 1 | |
| 26 | A10905M0477 | HEATER COVER | CUBRE-RESITENCIA | 1 | 1 | |
| 27 | 600717M0103 | DRAIN DUGING 60° | CODO DESAGUE 60° | 1 | 1 | |
| 28 | 600717M0088 | DRAIN HOSE | MANGUERA DESAGUE | 0.4 | 0.4 | |
| 29 | 6003010051 | PLASTIC SEAL | JUNTA GOMA DESAGUE | 1 | 1 | |
| 30 | 600301M0087 | NYLON NUT | TUERCA NYLON 7/8 | 1 | 1 | |

| # ITEM | CODE CÓDIGO | DESCRIPTION | DESCRIPCIÓN | FM-16F | FMD-23F | FMD-37F |
|--|----------------|-------------------------|----------------------------|----------|----------|----------|
| A17101M0086 | | EVAPORATION UNIT | UNIDAD EVAPORACION | | | 1 |
| 15 | 602901M0024 | EVAPORATOR COIL | EVAPORADOR | | | 1 |
| 16 | 602105M0001 | FAN | VENTILADOR | | | 2 |
| 17 | A10905M0459 | EVAPORATION TRAY | BANDEJA EVAPORACION | | | 1 |
| 18 | A10905M0460 | EVAPORATION TRAY COVER | TAPA CUBIERTA EVAPORADOR | | | 1 |
| 19 | A10905M0461 | FAN BRACKET | SOPORTE VENTILADOR | | | 2 |
| 20 | 600305M0074 | FAN BLADE 8" | ASPA 8 " | | | 2 |
| 21 | 602713M0002 | FAN GRID | REJILLA VENTILADOR | | | 2 |
| 22 | 600709M0003 | FAN SUPORT | ARO CONDUCTO | | | 2 |
| 23 | A10905M0492 | DRAIN TRAY | BANDEJA DESAGUE | | | 1 |
| 24 | 602125M0035 | DRAIN HEATER | RESISTENCIA GOTEO | | | 1 |
| 25 | 602125M0073 | DEFROST HEATER | RESISTENCIA DESHIELO | | | 1 |
| 26 | A10905M0475 | HEATER COVER | CUBRE-RESITENCIA | | | 1 |
| 27 | 600717M0103 | DRAIN DUGING 60° | CODO DESAGUE 60° | | | 1 |
| 28 | 600717M0088 | DRAIN HOSE | MANGUERA DESAGUE | | | 0.4 |
| 29 | 6003010051 | PLASTIC SEAL | JUNTA GOMA DESAGUE | | | 1 |
| 30 | 600301M0087 | NYLON NUT | TUERCA NYLON 7/8 | | | 1 |
| Doors & O thers / Puertas & Otros | | | | | | |
| A16905M0027 | | DOOR KIT | ENSAMBLE DE PUERTAS | 1 | | |
| 31 | A16905M0017 | RIGHT DOOR | PUERTA | 1 | | |
| 32 | 604501M0047 | GASKET | BURLETE | 1 | | |
| - | 600717M0100 | BLACK HOSE | MANGUERA NEGRA | 0.4 | | |
| - | 600301M0083 | | GLANDULA PASACABLE | 1 | | |
| - | A10913M0723 | TOP RIGHT HINGE | BISAGRA SUPERIOR DERECHA | 1 | | |
| A16905M0028 | | DOOR KIT | ENSAMBLE DE PUERTAS | | 1 | |
| 31 | A16905M0018 | RIGTH DOOR | PUERTA DERECHA | | 1 | |
| 32 | 604501M0047 | GASKET | BURLETE | | 1 | |
| - | 600717M0100 | BLACK HOSE | MANGUERA NEGRA | | 0.4 | |
| - | 600301M0083 | | GLANDULA PASACABLE | | 1 | |
| 33 | 6033010003 | CARTRIDGE | CARTUCHO | 2 | 1 | |
| 35 | 6003010136 | BUSHING | CAJA ALOJAMIENTO | | 1 | |
| 36 | A10913M0725 | TOP RIGHT HINGE | BISAGRA SUPERIOR DERECHA | | 1 | |
| 37 | A10913M0724 | BOTTOM RIGHT HINGE | BISAGRA INFERIOR DERECHA | 1 | 1 | |
| A16905M0030 | | DOOR KIT | ENSAMBLE DE PUERTAS | | | 1 |
| 31 | A16905M0020 | RIGTH DOOR | PUERTA DERECHA | | | 1 |
| | A16905M0021 | LEFT DOOR | PUERTA IZQUIERDA | | | 1 |
| 32 | 604501M0048 | GASKET | BURLETE | | | 1 |
| - | 600717M0100 | BLACK HOSE | MANGUERA NEGRA | | | 0.4 |
| - | 600301M0083 | | GLANDULA PASACABLE | | | 1 |
| 33 | 6033010003 | CARTRIDGE | CARTUCHO | | | 1 |
| 35 | 6003010136 | BUSHING | CAJA ALOJAMIENTO | | | 1 |
| A16909M0009 | | HINGES KIT | KIT BISAGRAS | | | 1 |
| 36 | A10913M0725 | TOP RIGHT HINGE | BISAGRA SUPERIOR DERECHA | | | 1 |
| 37 | A10913M0724 | BOTTOM RIGHT HINGE | BISAGRA INFERIOR DERECHA | | | 1 |
| 38 | A10913M0727 | TOP LEFT HINGE | BISAGRA SUPERIOR IZQUIERDA | | | 1 |
| 39 | A10913M0727 | BOTTOM LEFT HINGE | BISAGRA INFERIOR IZQUIERDA | | | 1 |

| # ITEM | CODE CÓDIGO | DESCRIPTION | DESCRIPCIÓN | FM-16F | FMD-23F | FMD-37F |
|--|----------------|---------------------------|-----------------------------|--------|---------|---------|
| Controllers & Other / Controles & Otros | | | | | | |
| 40 | 602135M0045 | CAREL CONTROLLER | CONTROL CAREL | 1 | 1 | #N/A |
| 41 | 602113M0002 | DOOR SWITCH | INTERRUPTOR PUERTAS | | 1 | 2 |
| 42 | 6021130002 | LIGHT SWITCH | INTERRUPTOR ILUMINACION | 1 | 1 | 1 |
| 43 | 602113M0001 | ROCKET SWITCH | INTERRUPTOR GENERAL | 1 | 1 | 1 |
| Shelves /Parrilas | | | | | | |
| 44 | 603305M0026 | PILLASTER 37" | PILASTER 37" | 4 | | |
| | 603305M0027 | PILLASTER 43" | PILASTER 43" | | 4 | 8 |
| 45 | 603301M0005 | STAINLESS STEEL CLIP | CLIP SS ACERO INOXIDABLE | 16 | 16 | 32 |
| | 602701M0035 | FLAT RACK | PARRILLA | 4 | | |
| 46 | 602701M0036 | FLAT RACK | PARRILLA | | 4 | |
| | 602701M0040 | FLAT RACK | PARRILLA | | | 8 |
| Panels /Rejillas | | | | | | |
| 47 | 602701M0028 | BACK PANEL | REJILLA POSTERIOR | 1 | 1 | |
| | 602701M0044 | BACK PANEL | REJILLA POSTERIOR | | | 1 |
| 48 | 603305M0041 | BOTTOM PANEL 23" | REJILLA INFERIOR | 1 | 1 | |
| | 603305M0047 | BOTTOM PANEL 37" | REJILLA INFERIOR | | | 1 |
| Top/Canopy | | | | | | |
| 49 | A16113M0033 | TOP PANEL 23" | CANOPY 23" | | 1 | |
| | A16113M0041 | TOP PANEL 37" | CANOPY 37" | | | 1 |
| 50 | 602301M0110 | FAGOR GRAPHIC 23" | GRAFICO FAGOR 23" | | 1 | |
| | 602301M0111 | FAGOR GRAPHIC 37" | GRAFICO FAGOR 37" | | | 1 |
| 51 | 600305M0157 | FRONTAL PLASTIC PANEL23" | PANEL FRONTAL PLASTICO 23" | | 1 | |
| | 600305M0156 | FRONTAL PLASTIC PANEL 37" | PANEL FRONTAL PLASTICO 37" | | | 1 |
| Others /Others | | | | | | |
| 52 | 603317M0001 | FAGOR PLATE (LITTLE) | PLACA FAGOR PEQUEÑA | 1 | 1 | 1 |
| | 602129M0046 | LED LAMP | LAMPARA LED | | 1 | 1 |
| 53 | 602129M0045 | LED LAMP | LAMPARA LED | 1 | | |
| 54 | 602129M0023 | DRIVER | BALASTRO | 1 | 1 | 1 |
| 55 | A10905M0321 | LED SUPPORT | SOPORTE LAMPARA LED | 1 | 1 | 1 |
| | 602129M0040 | FLUORESCENT LAMP | LAMPARA FLUORESCENTE | | 1 | |
| 56 | 602129M0018 | FLUORESCENT LAMP | LAMPARA FLUORESCENTE | | | 1 |
| 57 | 602129M0010 | BALLASTER | BALASTRO | | 1 | 1 |
| 58 | 602129M0041 | SOCKET LAMP | SOCKET LAMPARA FLUORESCENTE | | 2 | 2 |
| 59 | 602101M0088 | CONTACTOR 30A | CONTACTOR 30A | 1 | 1 | 1 |
| Drain/Desague | | | | | | |
| 60 | 600717M0086 | RIGID DRAIN HOSE | MAGUERA DESAGUE RECTA | 1 | 1 | 1 |
| 61 | 600717M0099 | PLASTIC DUGIN FITTING | CODO 90° ESPIGA DOBLE | 2 | 2 | 2 |
| 62 | 600717M0088 | FLEX DRAIN HOSE 5/8" | MAGUERA DESAGUE FLEXIBLE | 0.4 | 0.4 | 0.4 |
| 63 | 600301M0035 | PLASTIC COUPLE FITTING | COPLE DESAGUE | 1 | 1 | 1 |
| 64 | 600717M0070 | DRAIN HOSE | MAGUERA DESAGUE CURVA | 1 | 1 | 1 |

FAGOR



CUSTOMER SERVICE

Fagor Commercial, Inc.
13105NW 47thAve
Miami, FL 33054
Tel:(305) 7790170
Fax:(305)7790173
1-866-463-2467
www.Fagorcommercial.com

Circuito Exportación N° 201
Parque Industrial Tres Naciones
San Luís Potosí, S.L.P. México
C.P. 78395
Planta S.L.P.: + 52 (444) 137 0500
México D.F.: + 52 (55) 5082 5825

SERVICIO TECNICO