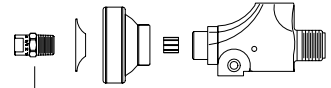


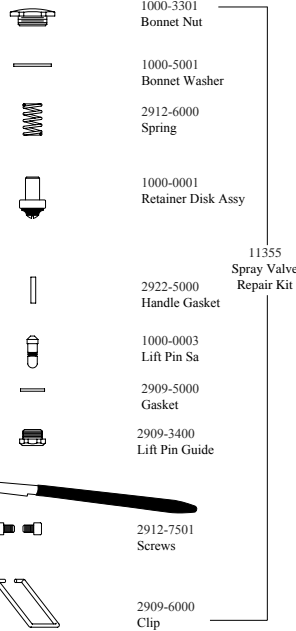
Spray Valve and Accessories

Model 2949 Spray Valve

Cast red brass construction with polished chrome finish. Inlet thread size fit Fisher and all other pre-rinse units. Squeeze lever is insulated for operator safety. Large, vinyl dish guard bumper accommodates optional snap-in scrubbing brush.



2949-3001
Nozzle for
2949 Spray
Valve



1000-3301
Bonnet Nut

1000-5001
Bonnet Washer

2912-6000
Spring

1000-0001
Retainer Disk Assy

11355
Spray Valve
Repair Kit

2922-5000
Handle Gasket

1000-0003
Lift Pin Sa

2909-5000
Gasket

2909-3400
Lift Pin Guide

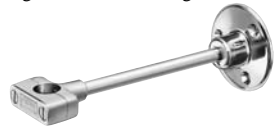
2912-2501
Squeeze Lever

2912-7501
Screws

2909-6000
Clip

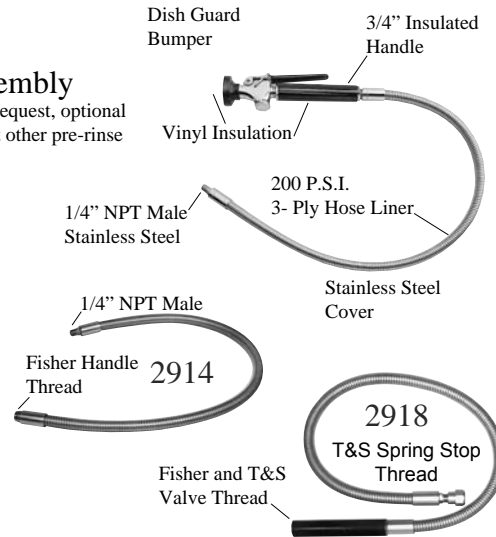
Model 2902-12 Wall Bracket

Designed to brace riser pipe, Chrome plated finish, Adjustable - 2 1/4" to 12". (Cut off adjusting rod for correct length.)



Model 2911 Hose and Spray Assembly

Overall length 46". Note: Upon request, optional adapter for inlet is available to fit other pre-rinse units.



Dish Guard
Bumper

3/4" Insulated
Handle

Vinyl Insulation

200 P.S.I.
3- Ply Hose Liner

1/4" NPT Male
Stainless Steel

Stainless Steel
Cover

1/4" NPT Male

Fisher Handle
Thread 2914

Fisher and T&S
Valve Thread

2918
T&S Spring Stop
Thread

Stainless Steel Armor Clad Flex Hose

Model 2914 - "A" = 36"

(Fits Model 2010 Pre-rinse Unit)

Model 2916 -25 1/2" - "A" = 25 1/2"

(Fits Model 2211 Pre-rinse Unit)

Model 2916 - 15 1/2" - "A" = 15"

(Fits Model 2916 - 15 1/2" Pre-rinse Unit)

Model 2918 - 44" Replacement

Pre-rinse hose with T&S adapter.

Also available in 68" for T&S sprays.

Model 2913 Insulated Handle

3/4" 14 Female



3/4" 14 Female

FISHER
MANUFACTURING COMPANY
PO BOX 60, TULARE, CA 93275
(800)421-6162, FAX: (800)832-8238
www.fisher-mfg.com

FISHER
FISHER MANUFACTURING COMPANY

Pre-Rinse Units Product Installation Guide

Since 1936, Fisher Manufacturing Company has manufactured heavy-duty, high quality plumbing products and hardware specialties for the food service industry. For three generations, the Fisher family has adhered to a strict dedication of and overall value. When you install Fisher products... you install the best. Our hardware is manufactured with the standardization of internal mechanisms. All chrome plating is triple plated copper, nickel and chrome for durability. Every piece of equipment we make is rigorously tested in both our modern in-house testing center and in actual field situations under extreme conditions. Every detail is thoroughly checked. Before we make our products available to you, they pass each and every test. You get proven performance. Guaranteed.

Limited One Year Warranty

Fisher Manufacturing Company warrants its products and parts thereof (except as noted below) against defects in materials or workmanship for a period of one year after the date of original purchase. During this period Fisher Manufacturing Company will replace a defective product or part without charge to you, provided that the entire product is delivered to Fisher Manufacturing Company. All transportation and insurance charges for shipping the product to and from Fisher Manufacturing Company must be borne by you. Charges for transportation and insurance may, at the option of Fisher Manufacturing Company, be refunded depending upon our investigation of the warranty claim. This warranty does not cover external finish (except at date of original purchase) or labor costs not specifically authorized by Fisher Manufacturing Company.

A full and complete copy of our One Year limited warranty is available upon request.

WARNING:

Proposition 65 requires that we provide you with the following notice: "This product Contains A Chemical Known To The State Of California To Cause Birth Defects Or Other Reproductive Harm."



KEEP THIS MANUAL FOR FUTURE REFERENCE

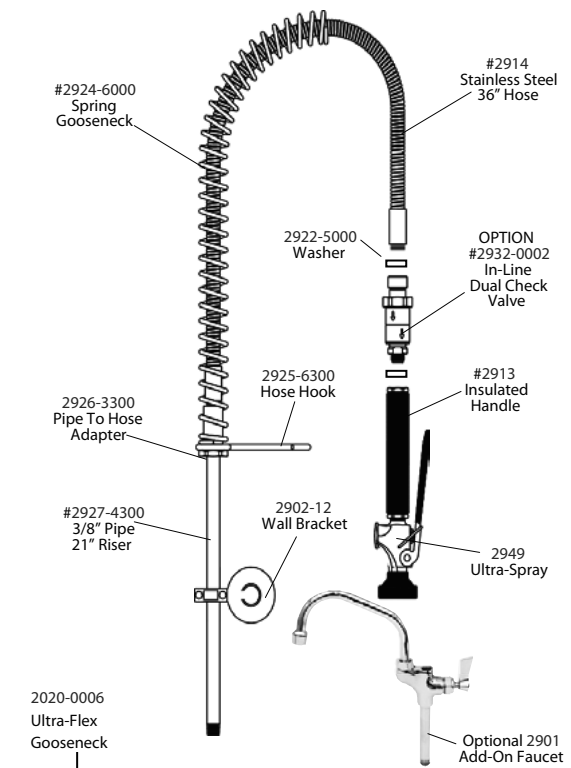


ANSI/A112.18.1M, ANSI/NSF 61.9

FISHER MANUFACTURING COMPANY • TOLL FREE: 800-421-6162 FAX: 800-832-8238

Installation Instructions for All Models

1. Install MIXING FAUCET.
2. Install 2927-4300 PIPE RISER and 2926-3300 PIPE TO HOSE ADAPTER. Into mixing faucet. Note: Use pipe sealant compound on both joints.
3. Slip 2925-6300 HOSE HOOK over 2926-3300 ADAPTER.
4. Install 2914 FLEX HOSE into 2926-3300 ADAPTER. **Note:** Use pipe sealant compound.
5. Install 2924-6000 SPRING GOOSE-NECK by slipping 2914 FLEX HOSE through the spring. Spring will fit over 2926-3300 ADAPTER which holds it in an upright position. **Note:** Be sure spring is installed as shown. DO NOT INSTALL SHORT BEND DOWN.
6. Install 2913 INSULATED HANDLE with hex end toward spray valve. **Note:** Be sure internal gaskets are in place for both hose and spray valve end of handle.



NOTICE TO PLUMBER:

It is not necessary to install check valves in supply lines to prevent cross flow of hot and cold water. All Fisher Mixing Faucets are supplied with internal check valves.

To insure long, maintenance free service and efficiency from your Fisher Pre-Rinse unit, we note the following.

1. Whenever possible install 2902-12 WALL BRACKET. This prevents the bending of the pipe riser by the operator.
2. The spray valve is provided with a spring clip which when placed in the squeeze handle notch allows the spray to run freely. This allows the operator to use both hands for pre-rinsing etc.
3. To avoid accidental flooding and increase hose life, relieve pressure on the hose during slack periods and at closing time by first turning off mixing faucet (or water supply) then squeezing the lever handle.

