

Replacement Parts for Wall Mount Faucets



8" Adjustable Wall Mount Faucet Product Installation Guide

Since 1936, Fisher Manufacturing Company has manufactured heavy-duty, high quality plumbing products and hardware specialties for the food service industry. For three generations, the Fisher family has adhered to a strict dedication of and overall value. When you install Fisher products... you install the best. Our hardware is manufactured with the standardization of internal mechanisms. All chrome plating is triple plated copper, nickel and chrome for durability. Every piece of equipment we make is rigorously tested in both our modern in-house testing center and in actual field situations under extreme conditions. Every detail is thoroughly checked. Before we make our products available to you, they pass each and every test. You get proven performance. Guaranteed.



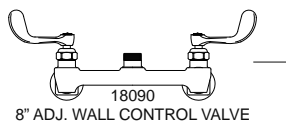
Limited One Year Warranty

Fisher Manufacturing Company warrants its products and parts thereof (except as noted below) against defects in materials or workmanship for a period of one year after the date of original purchase. During this period Fisher Manufacturing Company will replace a defective product or part without charge to you, provided that the entire product is delivered to Fisher Manufacturing Company. All transportation and insurance charges for shipping the product to and from Fisher Manufacturing Company must be borne by you. Charges for transportation and insurance may, at the option of Fisher Manufacturing Company, be refunded depending upon our investigation of the warranty claim. This warranty does not cover external finish (except at date of original purchase) or labor costs not specifically authorized by Fisher Manufacturing Company.

A full and complete copy of our One Year limited warranty is available upon request.

WARNING:
Proposition 65 requires that we provide you with the following notice: "This product Contains A Chemical Known To The State Of California To Cause Birth Defects Or Other Reproductive Harm."

- #48739 - 8" Adj. Wall Mount Faucet with 6" Swing Spout 7" DJ Swing Spout
- #48747- 8" Adj. Wall Mount Faucet with 8" Swing Spout 7" DJ Swing Spout
- #48755 - 8" Adj. Wall Mount Faucet with 10" Swing Spout 7" DJ Swing Spout
- #48763 - 8" Adj. Wall Mount Faucet with 12" Swing Spout 7" DJ Swing Spout
- #48771 - 8" Adj. Wall Mount Faucet with 14" Swing Spout 7" DJ Swing Spout
- #48798 - 8" Adj. Wall Mount Faucet with 16" Swing Spout 7" DJ Swing Spout



- 2000-7500 SCREW
- 2000-8000 RED BUTTON AND 2000-8001 BLUE BUTTON
- 3984-2300 WRIST HANDLE
- 2000-3002 BIBB CAP
- 10464 DUCK GASKET
- 2000-5000 WASHER
- 3000-0010 LH SWIVEL STEM OR 3000-0011 RH SWIVEL STEM
- 16101 FLAT SEAT WASHER
- 1000-7502 SCREW
- 10456 LUBE

- 3200-2306 ECCENTRIC FLANGES
- 3200-2307 1/2" ECCENTRICS

- 3967 16" SWING SPOUT
- 3964 14" SWING SPOUT
- 3963 12" SWING SPOUT
- 3962 10" SWING SPOUT
- 3961 8" SWING SPOUT
- 3960 6" SWING SPOUT

- 89621 RH SWIVEL STEM REPAIR KIT OR 89613 LH SWIVEL STEM REPAIR KIT
- 12564 2.2 GPM AERATOR
- 15621 SPOUT NUT
- 2002 SNAP RING
- 1600-5000 SPOUT O-RING
- 10456 LUBE

- 10014 (24") 10022 (36") SUPPLY LINE 1/2" F X 1/2" F
- 10049 (24") 10006 (36") SUPPLY LINE 1/2" M X 1/2" F
- 19119 SWIVEL SPOUT RETRO-FIT KIT

- 2400-2103 ELBOWS
- 1792 ANGLE STOP WITH KEY
- 1790-1 ANGLE STOP WITH CROSS HANDLES
- 3000-0003 DOUBLE JOINT SPOUT 7 1/2" OR 4000-0002 DOUBLE JOINT SPOUT 14"

- 2200-5000 ECCENTRIC GASKETS
- 2200-0000 SLIP JOINT KIT

FISHER
MANUFACTURING COMPANY
PO BOX 60, TULARE, CA 93275
(800)421-6162, FAX: (800)832-8238
www.fisher-mfg.com



ANSI/A112.18.1M, ANSI/NSF 61.9

FISHER MANUFACTURING COMPANY, TOLL FREE: 800-421-6162, FAX: 800-832-8238

www.fisher-mfg.com

Installation Instructions for Wall Mount Faucet

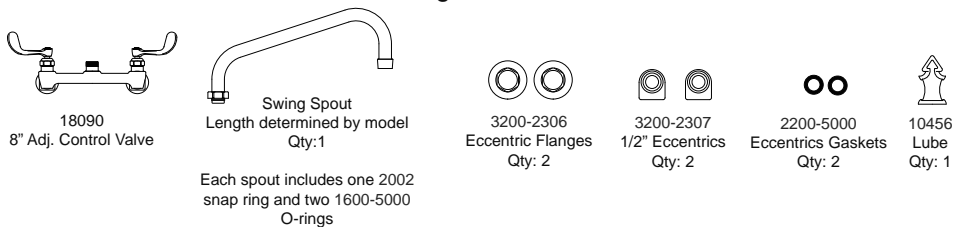
BE SURE TO CHECK WITH YOUR LOCAL DEPARTMENT HAVING JURISDICTION REGARDING BACKFLOW PREVENTION.

Installation Notes:

- Be sure water supply is shut-off before beginning.
- Use pipe thread sealant on all threaded joints such as PST or Teflon tape.
- Check the packaging for missing items BEFORE beginning installation. If items are missing, contact your supplier.

Package Contents

The box should contain the following:



Items needed for Installation

- 1 - Medium Sized Crescent Wrenches
- 1 - Plumbers Tape or Pipe Thread Sealant



Installation Instructions

Step 1.

After unpacking items and checking for missing components, insert and center the gasket into the female swivel inlets of the 8" control valve body. Loosely mount the eccentrics and flange onto the control valve body.

Step 2.

Mount control valve body to either a wall with a male supply nipples, or backsplash with nipples (not included). Be sure to use pipe thread sealant on the supply nipple threads. Adjust the eccentrics as needed in order to mount the control valve level. Once level, tighten the eccentrics

Step 3.

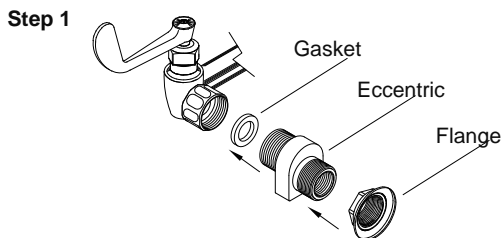
Optional DJ swivel spout, apply lube to the O-ring on the spout. Mount the DJ swivel spout and tighten the nut onto the faucet spout outlet.

Step 4.

Apply O-ring lube to the O-rings on the swing spout. Make sure the white snap ring is in place before mounting the swing spout. Mount the swing spout and tighten the swing spout nut onto the faucet spout outlet.

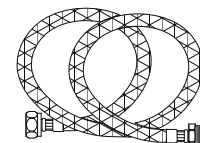
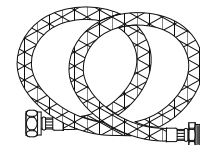
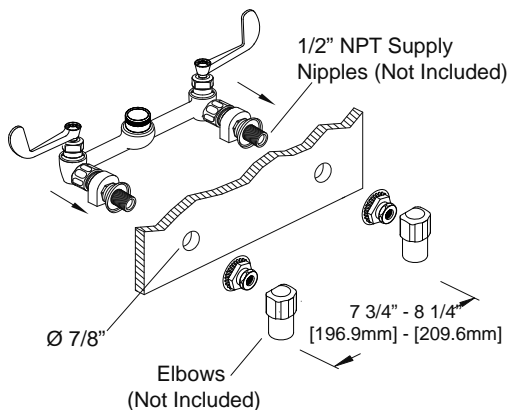
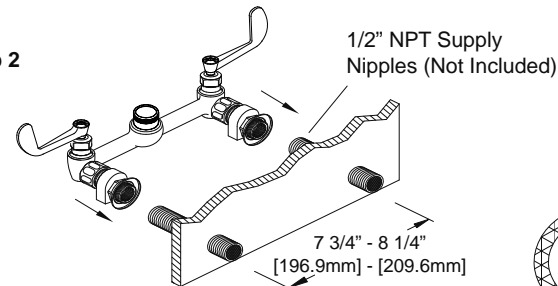
Step 5.

Turn on water supply and check for leaks.



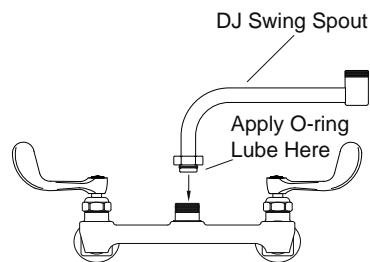
Installation Instructions Continued

Step 2

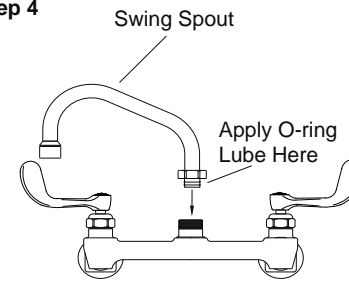


Supply Lines (Not Included)

Step 3



Step 4



Step 5

