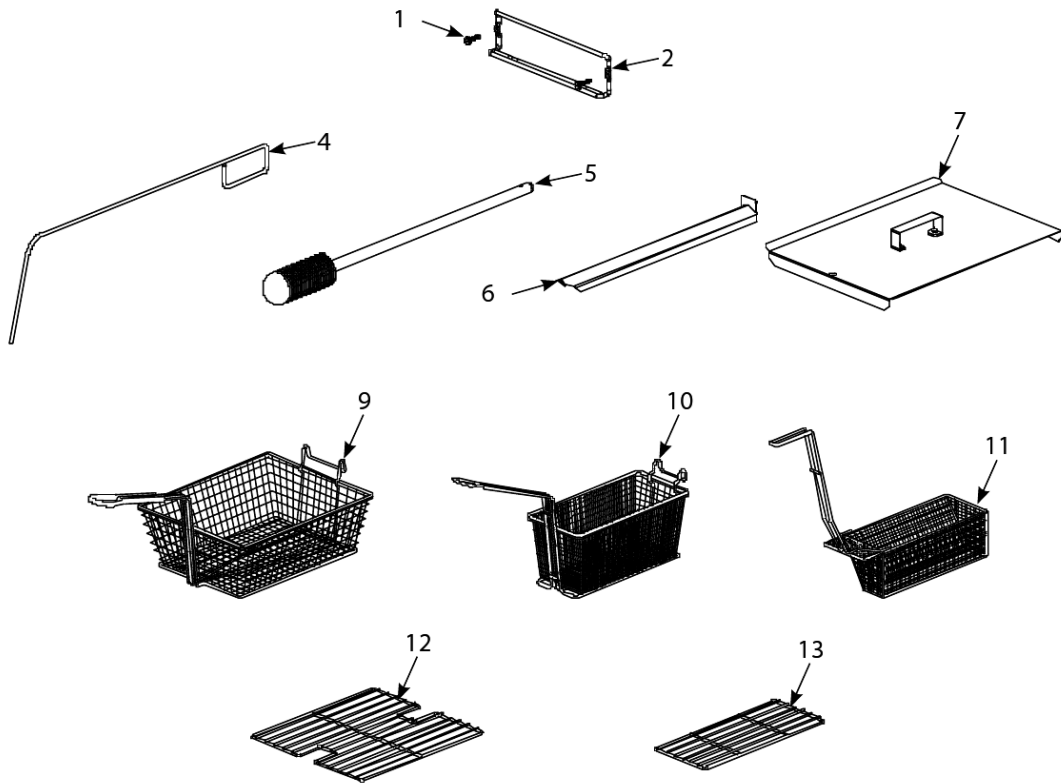


BIPH14-MPH14 Series Electric Fryers

Accessories



BIPH14-MPH14 Series Electric Fryers

Accessories

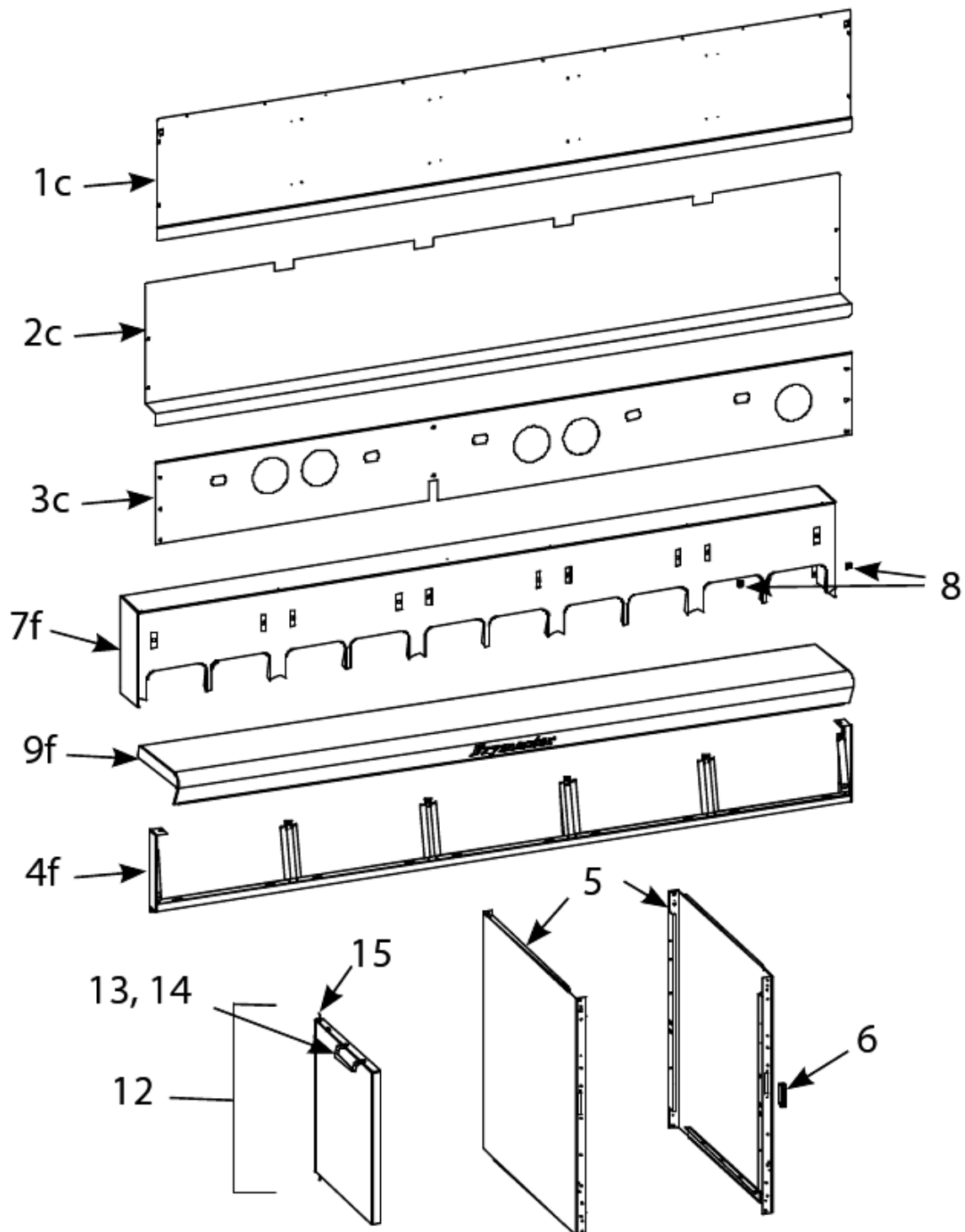
#	PART #	DESCRIPTION	QTY	Note
1	8090171	Thumbscrew, 0.25-20 x 1.375-inch	1	
2	8101403	Hanger, Wireform Basket	1	
3	8090921-FRY	Spacer, Basket Hanger	1	
4	8030197	Fryer's Friend	1	
5	8030209	Brush, Frypot	1	
6	8235810	Connecting Strip, Frypot	1	
7	8063068	Cover, Full-Vat Frypot	1	
8	8063071	Cover, Dual Vat Frypot	1	
9	8030099	Basket, Full Size	1	
10	8030271	Basket, Twin Size	1	[1]
11	8030122	Sediment Tray, Dual-vat, Left	1	
11a	8030123	Sediment Tray, Dual-vat, Right	1	
11b	8030113	Sediment Tray, Full-vat	1	
12	8030132	Rack, Full-Vat Basket Support	1	
13	8030106	Rack, Electric Dual-Vat Basket Support	1	
14	8030002	Powder, Filter	1	[2]
15	8030046	Cup, Plastic Filter Powder Measuring	1	
16	8030170	Filter Paper, 16.5" x 25.75"	1	

PART NOTES:

- [1] - Twin
- [2] - 80 1-Cup Applications

BIPH14-MPH14 Series Electric Fryers

Back Panels, Control Panel Frames, Doors, Sides, Tilt Housings, and Top Caps



Back Panels, Control Panel Frames, Doors, Sides, Tilt Housings, and Top Caps

BIPH14-MPH14 Series Electric Fryers

Back Panels, Control Panel Frames, Doors, Sides, Tilt Housings, and Top Caps

#	PART #	DESCRIPTION	QTY	Note
1	2002299	Back Panel, Upper, Two Station Fryer	1	
1a	2002380	Back Panel, Upper, Three Station Fryer	1	
1b	2003490	Back Panel, Upper, Four Station Fryer	1	
1c	2003670	Back Panel, Upper, Five Station Fryer	1	
2	2002298	Back Panel, Center, Two Station Fryer	1	
2a	2002379	Back Panel, Center, Three Station Fryer	1	
2b	2003489	Back Panel, Center, Four Station Fryer	1	
2c	2003669	Back Panel, Center, Five Station Fryer	1	
3	2004430	Back Panel, Lower, Two Station Fryer	1	
3a	2004431	Back Panel, Lower, Three Station Fryer	1	
3b	2004432	Back Panel, Lower, Four Station Fryer	1	
3c	2004433	Back Panel, Lower, Five Station Fryer	1	
4	8067172SP	Frame, Control Panel, Two Station Fryer	1	
4a	1065221SP	Frame, Control Panel, Two Station Fryer	1	[1]
4b	8067173SP	Frame, Control Panel, Three Station Fryer	1	
4c	1065018SP	Frame, Control Panel, Three Station Fryer	1	[1]
4d	8067174SP	Frame, Control Panel, Four Station Fryer	1	
4e	1065019	Frame, Control Panel, Four Station Fryer	1	[1]
4f	8069776SP	Frame, Control Panel, Five Station Fryer	1	
4g	1065020	Frame, Control Panel, Five Station Fryer	1	[1]
5	2104435	Side, Standard Cabinet Left or Right	1	
6	8102346	Door Magnet - Horizontal	1	
7	8241061	Tilt Housing, Two Station	1	
7a	8241057	Tilt Housing, Two Station, Aluminized Steel	1	
7b	8241062	Tilt Housing, Three Station	1	
7c	8241058	Tilt Housing, Three Station, Aluminized Steel	1	
7d	8241063	Tilt Housing, Four Station	1	
7e	8241059	Tilt Housing, Four Station, Aluminized Steel	1	
7f	8241064	Tilt Housing, Five Station, S/S	1	
7g	8241060	Tilt Housing, Five Station, Aluminized Steel	1	
8	8261351	Nut Retainer, 0.25-20 Std. Fluecap	10	[2]
9	8240869	Top Cap (Also requires Nutserts), Two Station	1	
9a	1065196	Top Cap - Two Station Fryer	1	[1]
9b	8240870	Top Cap (Also requires Nutserts), Three Station	1	
9c	1065197	Top Cap - Three Station Fryer	1	[1]
9d	8240871	Top Cap (Also requires Nutserts), Four Station	1	
9e	1065198	Top Cap, Four Station	1	[1]
9f	8240872	Top Cap (Also requires Nutserts), Five Station	1	
9g	1065199	Top Cap, Five Station	1	[1]
10	8090078	10-32 Nutserts	1	
11	8233074	Cap-N-Splash, Two Station	1	
11a	8233075	Cap-N-Splash, Three Station	1	
11b	8233077	Cap-N-Splash, Four Station	1	
11c	8233076	Cap-N-Splash, Five Station	1	
12	1064397	Door - Left/Right	1	[3]
13	8090266	Screw, 10 x 0.5-inch Phillips Head ZP	1	

Back Panels, Control Panel Frames, Doors, Sides, Tilt Housings, and Top Caps

BIPH14-MPH14 Series Electric Fryers

Back Panels, Control Panel Frames, Doors, Sides, Tilt Housings, and Top Caps

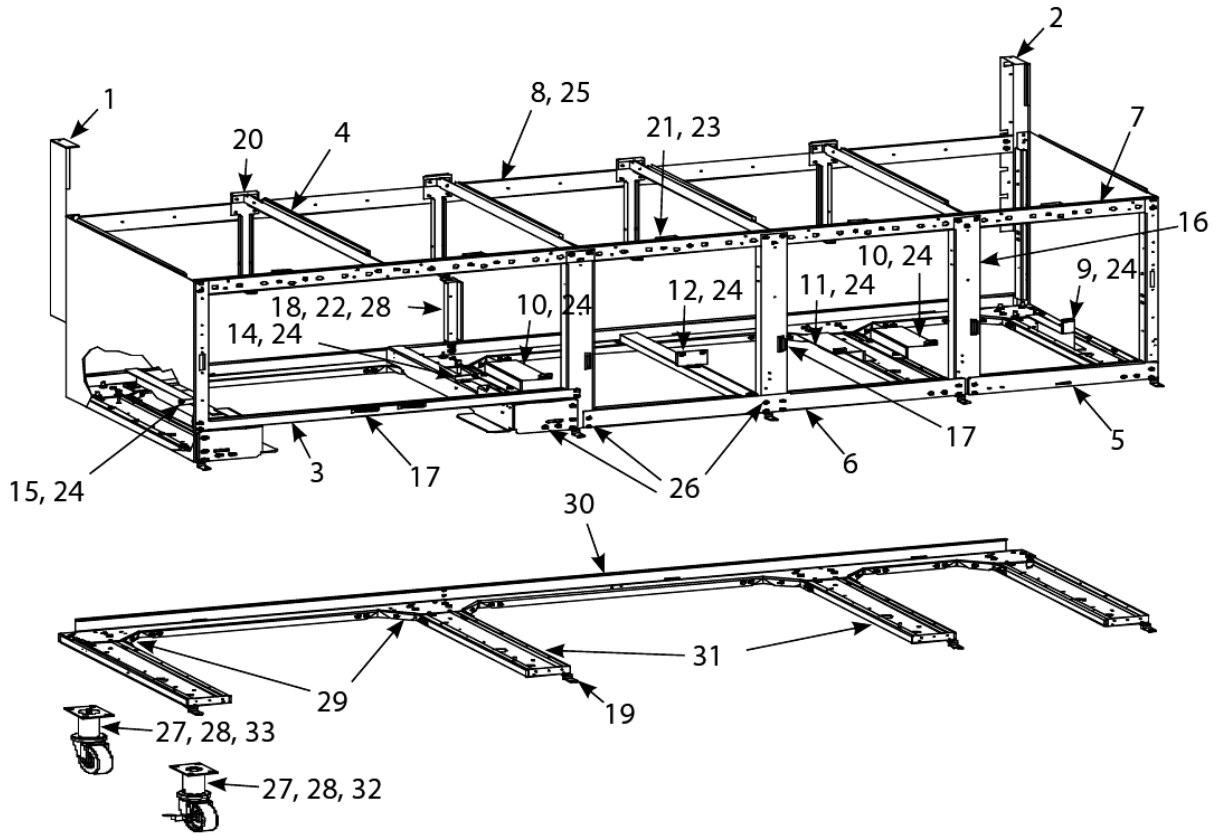
#	PART #	DESCRIPTION	QTY	Note
14	8101422	Handle, Wireform Door	1	
15	1064067SP	Door Pin Assembly	1	
16	8261343	Spring - Door Pin Hinge	1	
17	8240791	Tilt Housing, Single	1	
18	8240789	Tilt Housing, Double	1	
19	8240798	Tilt Housing, Triple	1	
20	8240799	Tilt Housing, Quad	1	

PART NOTES:

- [1] - for fryers mfd. After 6.22.05
- [2] - for use on standard fluecap
receives basket hanger thumbscrew
- [3] - Left shown – move handle to bottom for right

BIPH14-MPH14 Series Electric Fryers

Cabinet Bases, Braces, and Associated Parts



Cabinet Bases, Braces, and Associated Parts

BIPH14-MPH14 Series Electric Fryers

Cabinet Bases, Braces, and Associated Parts

#	PART #	DESCRIPTION	QTY	Note
1	1061265SP	Upright Assembly, Left	1	
2	1061266SP	Upright Assembly, Right	1	
3	2001651	Support, Cross Cabinet	1	
4	2001659	Divider, Cabinet	1	
5	2002293-FRY	Brace, Lower Front	1	
6	2003774	Brace, Double Station Lower	1	
7	2002331	Brace, Front Horizontal, Two-Station Fryer	1	
7a	2002296	Brace, Front Horizontal, Three-Station Fryer	1	
7b	000013992	Electronic Sensor - Ice Bank Control	1	
7c	2003590	Brace, Front Horizontal, Five-Station Fryer	1	
8	2002284	Brace, Rear Horizontal, Two-Station Fryer	1	
8a	2002295	Brace, Rear Horizontal, Three-Station Fryer	1	
8b	2002725	Brace, Rear Horizontal, Four-Station Fryer	1	
8c	2003592	Brace, Rear Horizontal, Five-Station Fryer	1	
9	2004422	Support, Contactor Box Right Station 3 or Station 5	1	
10	2014425	Support, Contactor Box Left Station 4 or Station 5	1	
11	2024425	Support, Contactor Box Right Station 3	1	
12	2004423	Support, Contactor Box Stations 3 and 4	1	
13	2004447	Support, Contactor Box Front to Rear	1	
14	2015369	Support, Contactor Box Station 2	1	
15	2025369	Support, Contactor Box Station 1	1	
16	2004424	Post, Door	1	
17	8102346	Door Magnet - Horizontal	1	
18	2004786	Support, Oil Return Manifold	1	
19	2105595	Hinge, Door	1	
20	2101490	Bracket, Rear Support	1	
21	9001224	Bracket, Frypot	1	
22	8261389	Screw - 0.25"-20 x 0.75" Hex Head ZP	1	[1]
23	8261371	Screw - #8 x 0.5" Hex Head ZP	25	
24	8261330	Screw, 10-32 x 0.375-inch Slot Head SS	25	[2]
25	8261376	Nut - #10-32 Keps Hex	1	
26	8261374	Screw - #10 x 0.5" Hex Head	1	[3]
27	8261368	Nut - 0.25-20 Serrated Flange	1	
28	8090429	Bolt - 0.25"- 20 x 2.00" Hex Head ZP Tap	1	
29	2005417	Brace, Rear Channel Corner	1	
30	2005463	Channel, Base Rear, Two-Station Fryer	1	
30a	2005538	Channel, Base Rear, Three-Station Fryer	1	
30b	2005537	Channel, Base Rear, Four-Station Fryer	1	
30c	2005536	Channel, Base Rear, Five-Station Fryer	1	
31	8241131	Channel, Base Side	1	
32	8100326	Caster, Adjustable Front (Before 6 Nov 2000)	1	
33	8100327	Caster 4" without Brake	1	

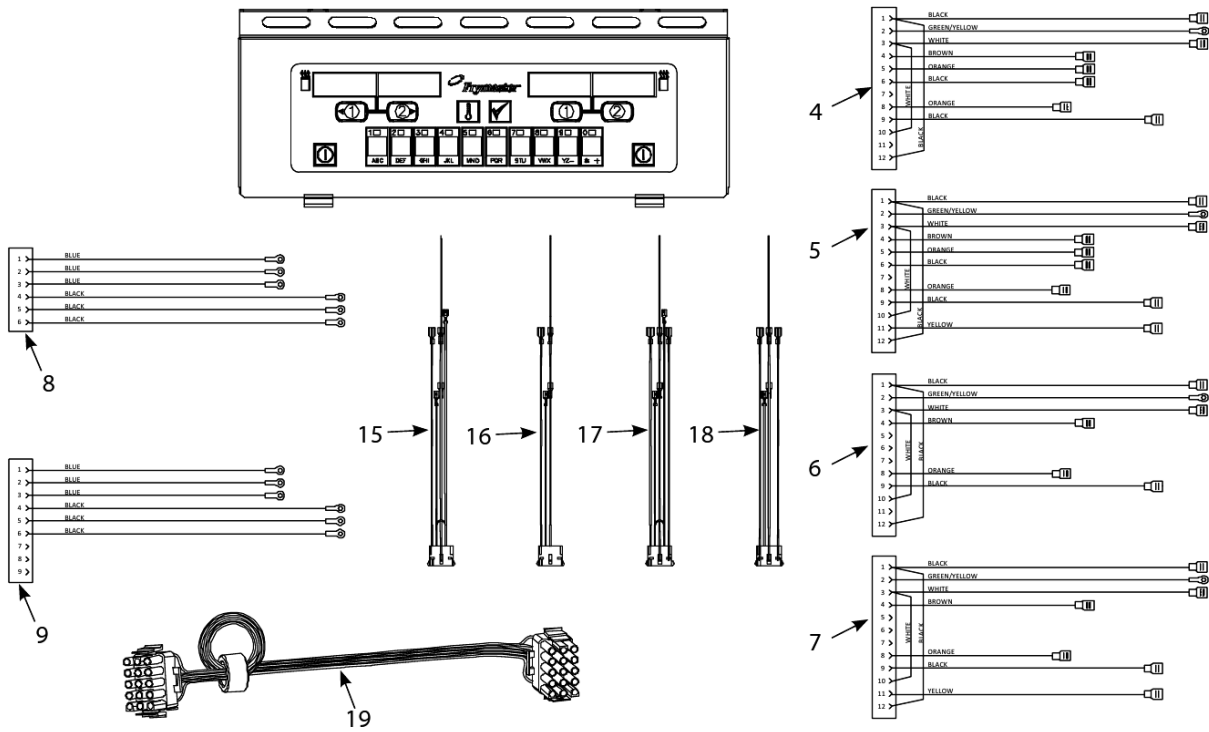
PART NOTES:

- [1] - also used w/Item 27 to mount filter rails
- [2] - used to attach contactor box
- [3] - primary cabinet screw

Cabinet Bases, Braces, and Associated Parts

BIPH14-MPH14 Series Electric Fryers

Computers and Wiring Harnesses



BIPH14-MPH14 Series Electric Fryers

Computers and Wiring Harnesses

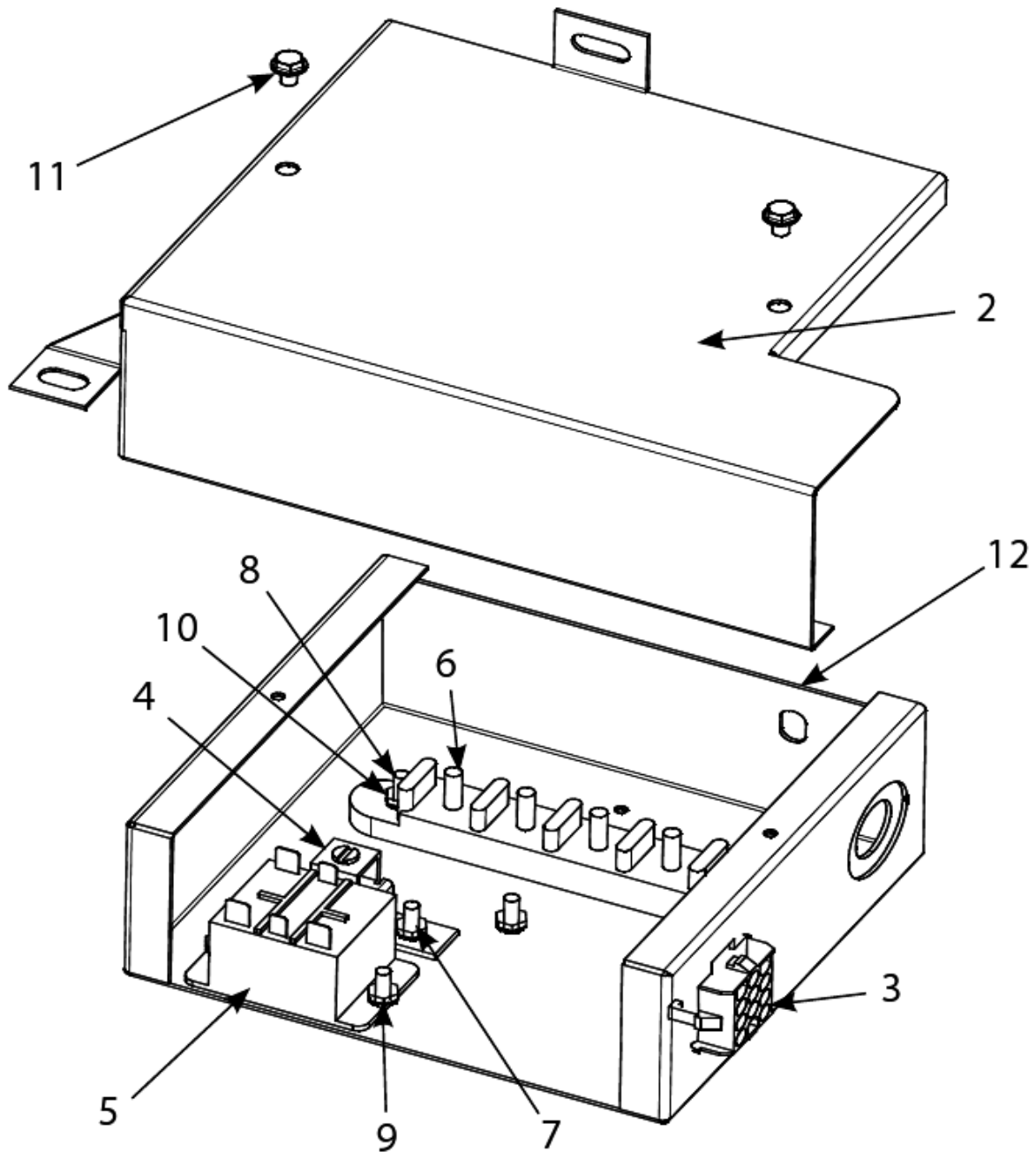
#	PART #	DESCRIPTION	QTY	Note
1	1060529B	Computer, McDonald's M2000 Gas Fryer, U.S. and Canada FV / Non-CE Export	1	
2	1062436B	Computer, McDonald's M2000 Gas Fryer, CE Export FV	1	
3	8232986	Replacement Bezel	1	
4	1062428SP	Contactora Box Wiring Assemblies – 12-Pin Dual-Vat C-1, Standard	1	
5	1062343SP	Contactora Box Wiring Assemblies – 12-Pin Dual-Vat C-1, Triac	1	
6	1062474SP	Contactora Box Wiring Assemblies – 12-Pin Full-Vat C-1, Standard, Other than 480V	1	
6a	1062522SP	Contactora Box Wiring Assemblies – 12-Pin Full-Vat C-1, Standard, 480V	1	
7	1062475SP	Contactora Box Wiring Assemblies – 12-Pin Full-Vat C-1, Triac	1	
8	1062426SP	Contactora Box Wiring Assembly – 6-Pin	1	[1]
9	1062425SP	Contactora Box Wiring Assembly – 9-Pin	1	[2]
10	8073769	Main	1	
11	8073716	Two or Three-Fryer Battery	1	
13	8073717	Four-Fryer Battery	1	
14	8073718	Five-Fryer Battery	1	
15	1062506SP	Component Box Wiring Harness – 15-Pin	1	[3]
16	1062507SP	Component Box Wiring Harnesses – 15-Pin, 208-480V	1	[4]
17	1062508SP	Component Box Wiring Harnesses – 15-Pin, 120V	1	[3]
18	1062509SP	Component Box Wiring Harnesses – 15-Pin, 120V	1	[4]
19	8062071SP	Standard Controller to Interface Board	1	

PART NOTES:

- [1] - Left Element
- [2] - Right Element
- [3] - With Filter
- [4] - Without Filter

BIPH14-MPH14 Series Electric Fryers

Control Cord Box



Control Cord Box

FRY_P_0028_4_15_Control Cord Box.pdf

BIPH14-MPH14 Series Electric Fryers

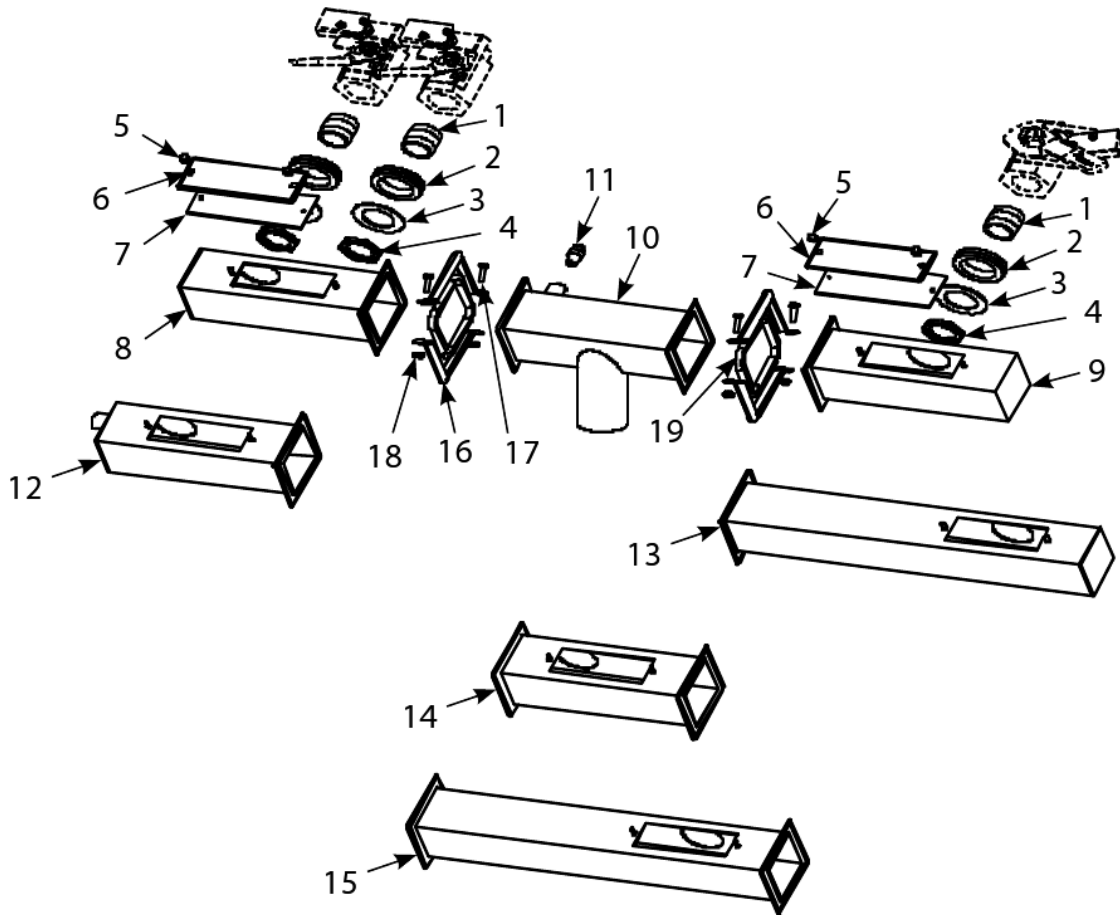
Control Cord Box

#	PART #	DESCRIPTION	QTY	Note
1	8069794	Control Cord Box	1	
2	2003379	Cover, MAC Control Cord Box	1	
3	8069795	Harness Assembly, MAC	1	
4	8070070	Terminal, Ground Lug	1	
5	8071683	Relay, 12VDC Secondary Blower Fan to cool frypot	1	
6	8071973	Terminal, Post	1	
7	8090104	Screw, 8-32 x 0.5-inch Slotted Head ZP	1	
8	8090123	Screw - #10 x 0.75" - Slot Head	1	
9	8090247	Nut - #8-32 Keps Hex	1	
10	8261376	Nut - #10-32 Keps Hex	1	
11	8090359	Screw, 8 x 0.25-inch Hex Washer Head	1	
12	9008024	Box, MAC Control Cord	1	
13	WIR0324	Wiring Assembly	1	

Control Cord Box

BIPH14-MPH14 Series Electric Fryers

Drain Tube Sections and Associated Parts



Drain Tube Sections and Associated Parts

BIPH14-MPH14 Series Electric Fryers

Drain Tube Sections and Associated Parts

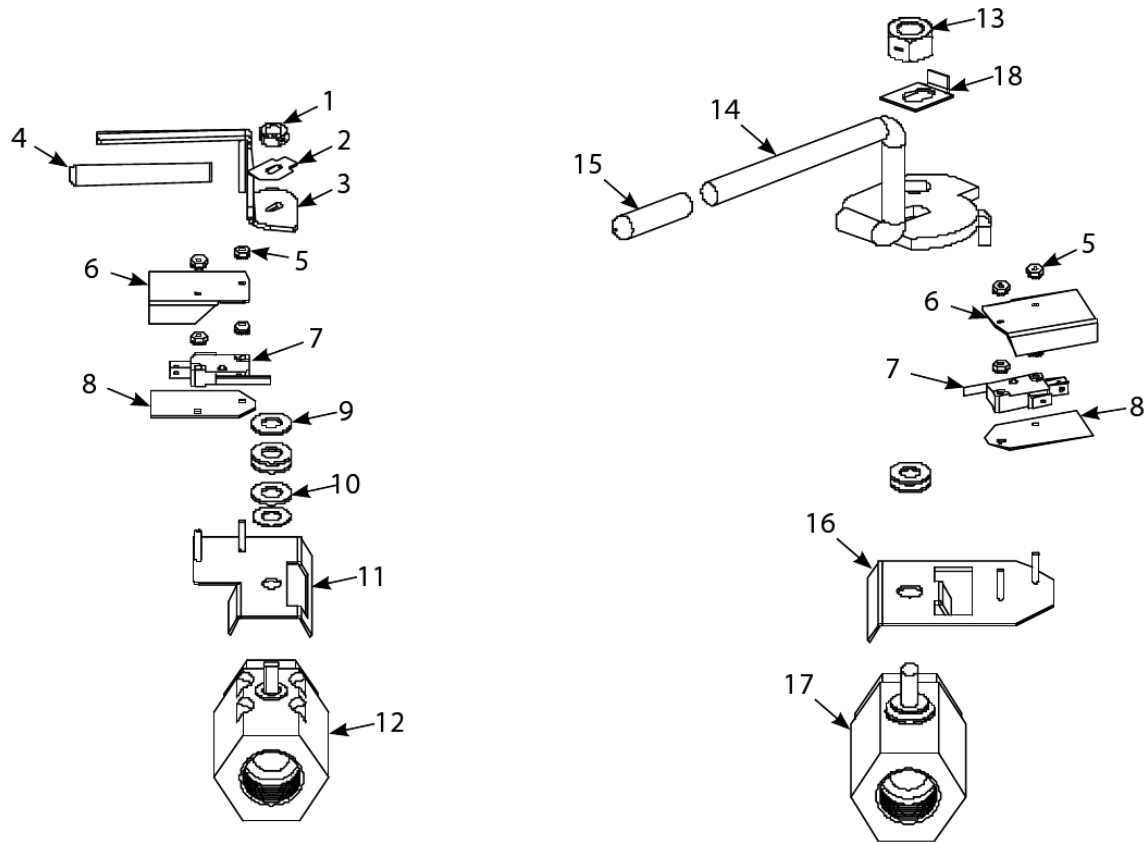
#	PART #	DESCRIPTION	QTY	Note
1	8130284	Nipple - 0.75" x 1" NPT	1	
2	8160092	Grommet, 1-inch Drain	1	
3	8261345	Washer, 1-inch Drain	25	
4	8090347	Nut, 1-inch NPT Retainer	1	
5	8090893	Nut, 8-32 High Crown Acorn	1	
6	8261348	Cover, Drain Cleanout	5	
7	8160021	Gasket, Drain Cleanout	1	
8	8233380	Drain Tube, Left End	1	
8a	8233379	Drain Tube, Left End Short, Dual-Vat	1	
9	8231549	Drain Tube, Right End Short	1	
9a	8231551	Drain Tube, Right End, Dual-vat	1	
10	8233229	Drain Outlet	1	
10a	8232336	Drain, FootPrint	1	
11	8102492	Fitting, Quick-Connect Straight	1	[1]
12	8232637	Drain Tube, Left End, Full-vat	1	
12a	8232636	Drain Tube, Left End, Dual-vat	1	
13	8231508	Drain Tube, Right End Long	1	
13a	8231543	Drain Tube, Right End, Dual-vat	1	
14	8230718	Drain Tube, Left End, 2.5 x 8.0-inch	1	
14a	8230725	Drain Tube, Left End, Dual-vat, 2.5 x 8.0-inch	1	
15	8230717	Drain Tube, Open End Long	1	
15a	8230724	Drain Tube, Dual-vat FM 15.5-inch	1	
16	8100396	Clamp, Square Drain	1	
17	8261375	Screw - #10-32 x 0.75" - Hex Trim Head SS	1	
18	8261376	Nut - #10-32 Keps Hex	1	
19	8160032	Gasket, Square Drain	1	
20	8260877	Kit, Square Drain Clamp	1	[2]
21	8111071	Tube, 0.25-inch OD Teflon Manifold Vent	1	

PART NOTES:

- [1] - receives Teflon vent tube
- [2] - 2 each of Items 16-18 and 1 of Item 19

BIPH14-MPH14 Series Electric Fryers

Drain Valves and Associated Parts (Units with Built-In Filtration)



Drain Valves and Associated Parts (Units with Built-In Filtration)

BIPH14-MPH14 Series Electric Fryers

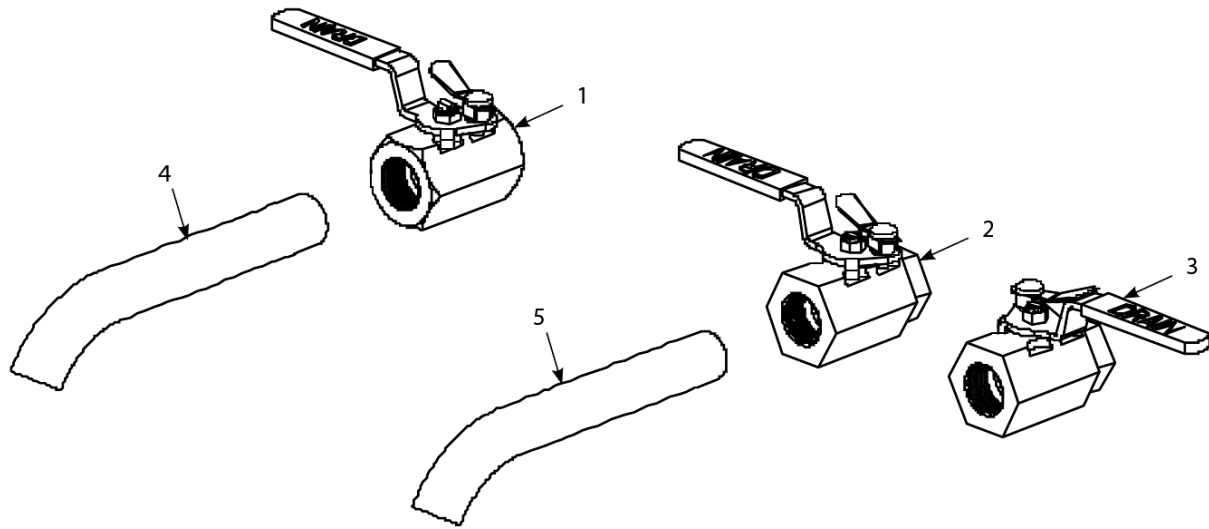
Drain Valves and Associated Parts (Units with Built-In Filtration)

#	PART #	DESCRIPTION	QTY	Note
1	8090539	Nut, 0.375-16 2-Way Lock	1	
2	9002934	Retainer, Dual-Vat Drain Valve Nut	1	
3	8234133	Handle, Dual-Vat Drain Valve	1	
4	8100677	Grip, Handle Round	1	
5	8261366	Nut - #4-40 Keps Hex	1	
6	9012348	Cover, Dual-Vat Left Drain Safety Switch	1	
7	8072103	Microswitch	1	
8	8160220	Insulation, Microswitch	1	
9	8101165	Washer, Teflon Drain Valve	1	
10	8090196	Washer, 0.375-inch SAE Flat	1	
11	1062671SP	Bracket Assembly, Dual-Vat Drain Safety Switch	1	
12	8101338	Valve, 1-inch, Universal Ball	1	
13	8090540	Nut, Lock 0.5-inch-13 Hex 2-Way ZP	1	
14	8241602	Handle, Valve, Full-vat	1	
15	8160639	Cap, Vinyl Red	1	
16	8068137SP	Bracket Assembly, Full-Vat Drain Safety Switch	1	
17	8101020	Valve, 1-inch Full-Vat Drain	1	
18	WIR0572	Wire Bundle, Drain Safety Switch	1	

Drain Valves and Associated Parts (Units with Built-In Filtration)

BIPH14-MPH14 Series Electric Fryers

Drain Valves and Associated Parts (Units without Built-In Filtration)



Drain Valves and Associated Parts (Units without Built-In Filtration)

BIPH14-MPH14 Series Electric Fryers

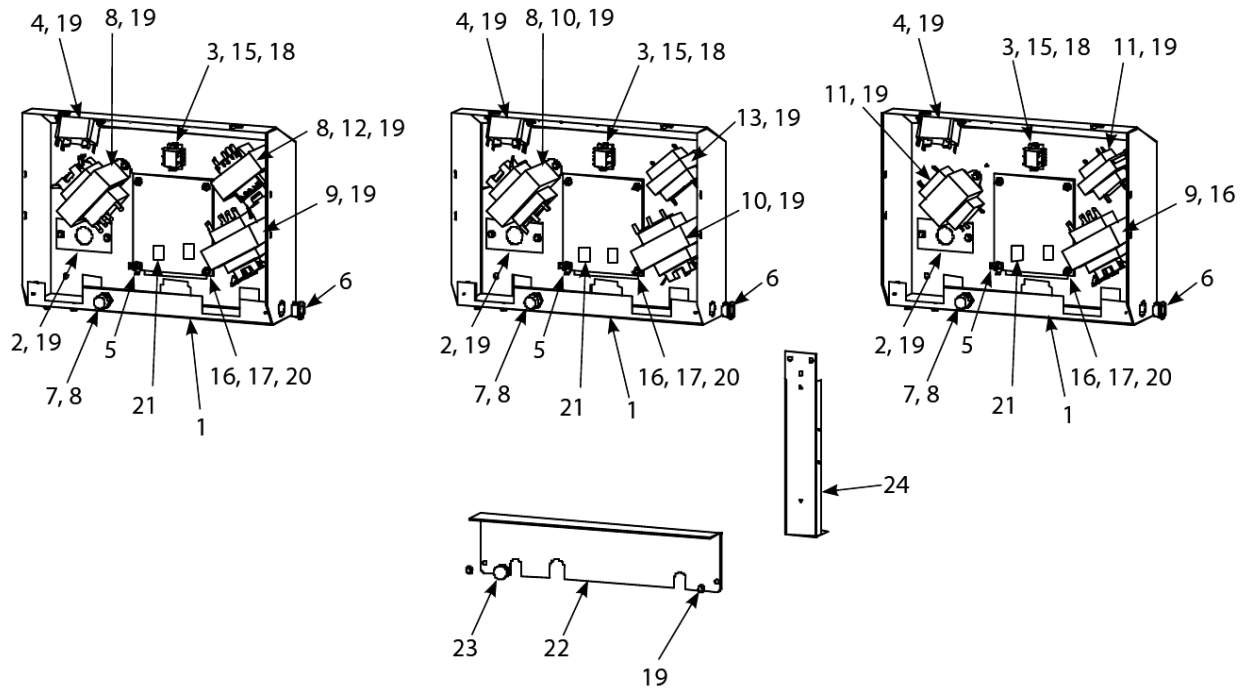
Drain Valves and Associated Parts (Units without Built-In Filtration)

#	PART #	DESCRIPTION	QTY	Note
1	8101569	Valve, 1.25-inch, Non-filter, Full-vat Drain	1	
2	8067915SP	Valve, 1-inch, Non-filter, Dual-vat, Left Drain	1	
3	8067916SP	Valve, 1-inch, Non-filter, Dual-vat, Right Drain	1	
4	8130188	Drain Nipple, Extended	1	
5	8130276	Drain Extension, 1-inch, Dual-vat	1	

Drain Valves and Associated Parts (Units without Built-In Filtration)

BIPH14-MPH14 Series Electric Fryers

Electronics and Wiring Components-Component Boxes



RESOURCE NOTES:

The transformer on the left side of the component box is present only in units with built-in filtration and then only in the left component box.

BIPH14-MPH14 Series Electric Fryers

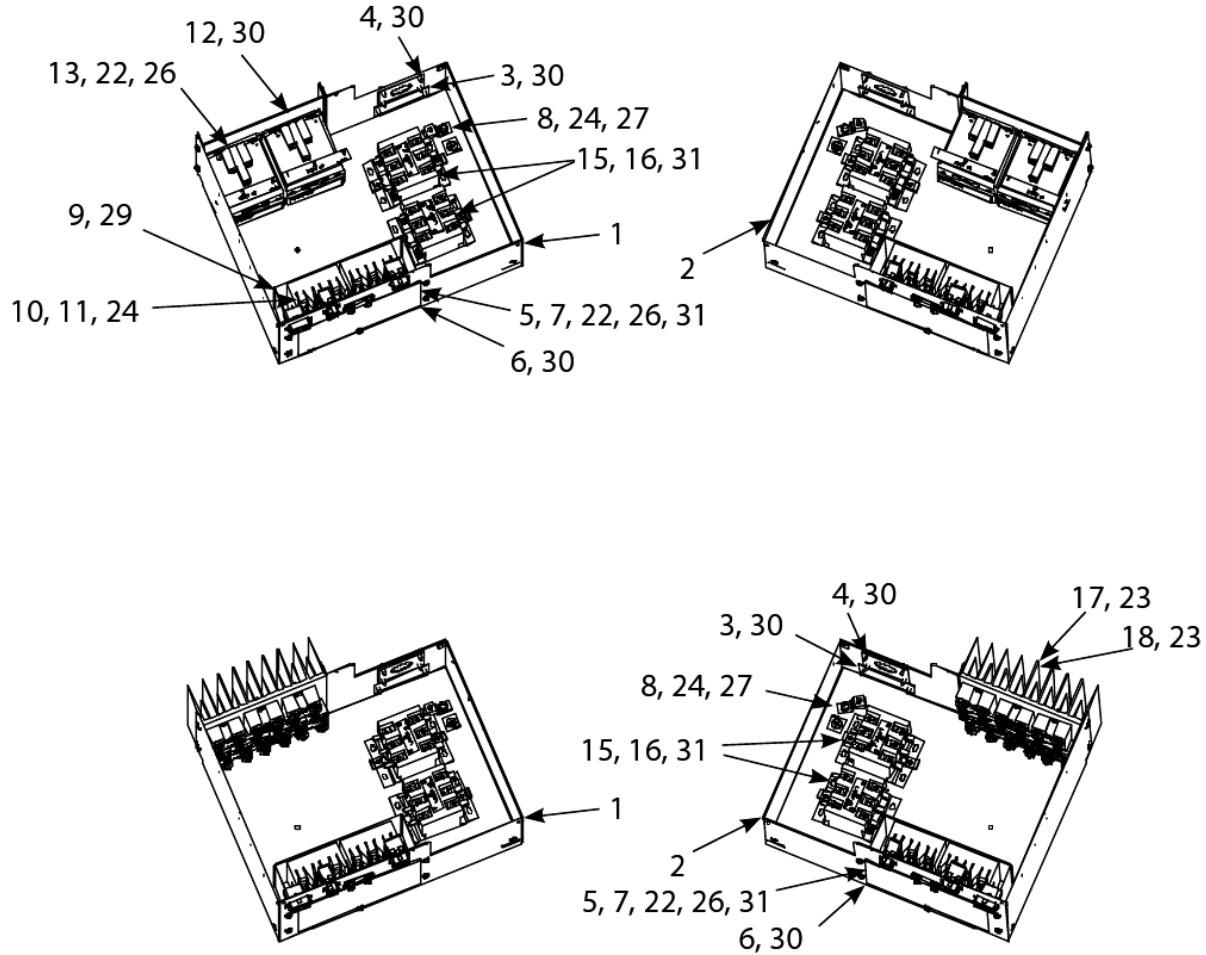
Electronics and Wiring Components-Component Boxes

#	PART #	DESCRIPTION	QTY	Note
1	1061531SP	Box Assembly, Component	1	
2	2003300	Bracket, Component Box Strain Relief	1	
3	8069495SP	Terminal Block and Wire Assembly	1	
4	8070012	Filter Relay - 18A 24VAC	1	
5	8070037	Terminal, 0.25-inch Push-on	1	
6	8070121	Bushing, Heyco SB-625-500	1	
7	8071321	Holder, Fuse	1	
8	8071597	Fuse - 3amp Slo-Blow	1	
9	8072180	Transformer - 208-240V/24V 50A	1	
10	8072181	Transformer, 100-120V/24V 62VA	1	
11	8070680	Transformer, 208V, 50/60Hz -24V 20VA	1	
12	8072191	Transformer - 208-240V -12V 30VA	1	
13	8070855	Transformer - 120V/50-60 Hz - 12V 20VA	1	
14	8070979	Transformer, 208V/240V/12V	1	
15	8261366	Nut - #4-40 Keps Hex	25	
16	8090250	Nut, 6-32 Keps Hex	1	
17	8090349	Spacer, 4mm X 6mm Aluminum	1	
18	8261359	Screw - #4-40 x 0.75" Slotted Round Head	25	
19	8090359	Screw, 8 x 0.25-inch Hex Washer Head	1	
20	8262256	Interface Board, Electronic Ignition, SMT	1	
20a	8262257	Interface Board, Triac, Full- or Dual-Vat	1	
21	8073932	Relay, Heat/Latch 12VDC SPDT 12 Amp Sealed	1	
22	2006583-FRY	Guard, Finger	1	
23	8102445	Plug, Button .625 Heyco Double "D"	1	
24	2003243	Brace, Component Box	1	
25	8262458	Speaker - 4 Watts	1	

Electronics and Wiring Components-Component Boxes

BIPH14-MPH14 Series Electric Fryers

Electronics and Wiring Components-Contactor Boxes



RESOURCE NOTES:

Left and right contactor box assemblies are mirror images of one another. With the exception of the box itself, all components of a left-hand assembly are the same as those in the corresponding right-hand assembly and vice versa. The configurations illust

BIPH14-MPH14 Series Electric Fryers

Electronics and Wiring Components-Contactor Boxes

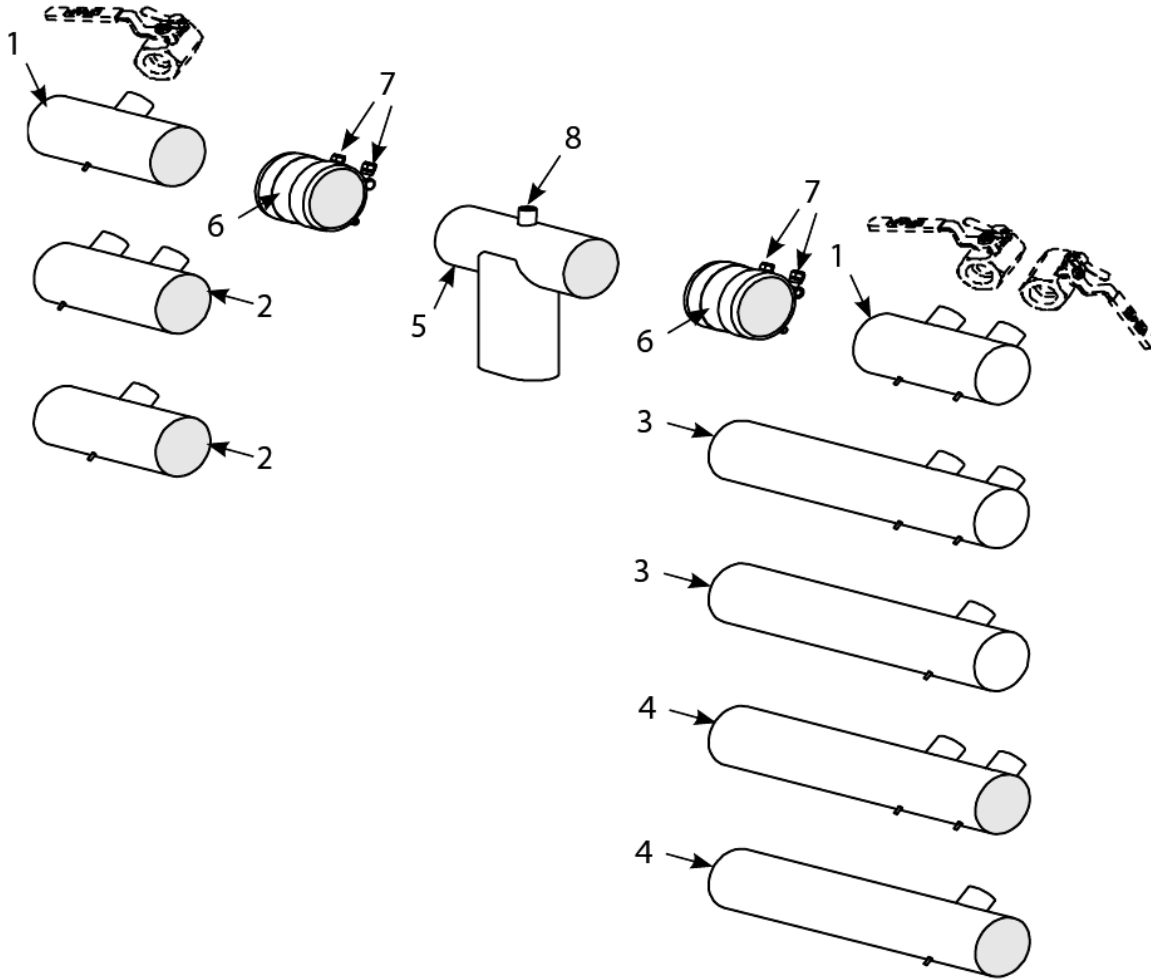
#	PART #	DESCRIPTION	QTY	Note
1	1061536SP	Box Assembly, Left Contactor	1	
2	1061537SP	Box Assembly, Right Contactor	1	
3	2003111	Cover, Cord Cutout	1	
4	9002752	Plate, Cordset	1	
5	2002334	Door	1	
6	2004712	Door, Contactor Box w/o Hinge	1	
7	8100519	Hinge	1	
8	8070070	Terminal, Ground Lug	1	
9	2002336	Bracket, Contactor Box Fuse Block	1	
10	8070501	Fuseholder block	1	
11	8072240	Fuse, 60 AMP 300VAC	1	
12	2002337	Bracket, Contactor Box	1	
13	8071071	Contactor, Mercury 24 VAC 30 Amp	1	
14	8070884	Contactor, Mercury- 240VAC 50-Amp	1	
15	8101202	Contactor, 24V 40 Amp Mechanical	1	
16	8090448	Clip, Tinnerman	1	
17	8068674	Heat Sink Assembly, Dual-vat Solid State Relay	1	
18	8068673	Heat Sink Assembly, Full-vat Solid State Relay	1	
19	8069124	Filter Assembly	1	[1]
20	8261358	Nut, 6-32 Keps Hex	25	
21	8261365	Screw, 6-32 x 0.375-inch Slot Head	25	
22	8090104	Screw, 8-32 x 0.5-inch Slotted Head ZP	1	
23	8261330	Screw, 10-32 x 0.375-inch Slot Head SS	25	
24	8090123	Screw - #10 x 0.75" - Slot Head	1	
25	8261366	Nut - #4-40 Keps Hex	25	
26	8090247	Nut - #8-32 Keps Hex	1	
27	8261376	Nut - #10-32 Keps Hex	10	
28	8261359	Screw - #4-40 x 0.75" Slotted Round Head	25	
29	8090359	Screw, 8 x 0.25-inch Hex Washer Head	1	
30	8090360	Screw, 8 x 0.375-inch Hex Washer Slot Head	1	
31	8261374	Screw - #10 x 0.5" Hex Head	25	
32	2005627	Lid, Left or Right Contactor Box	1	
33	8072751	Relay, Solid State 50 Amp 280V	1	
34	8261562	Relay with Heat Sink - 280V/40A	1	
35	8070037	Terminal, 0.25-inch Push-on	1	
36	8090096	Screw, 6-32 x 0.625-inch Slot Head	1	

PART NOTES:

- [1] - WYE Solid-State/Triac Contactor Box Only
used in Wye-configured Triac units only

BIPH14-MPH14 Series Electric Fryers

Euro-Look Drain Tube and Associated Parts



BIPH14-MPH14 Series Electric Fryers

Euro-Look Drain Tube and Associated Parts

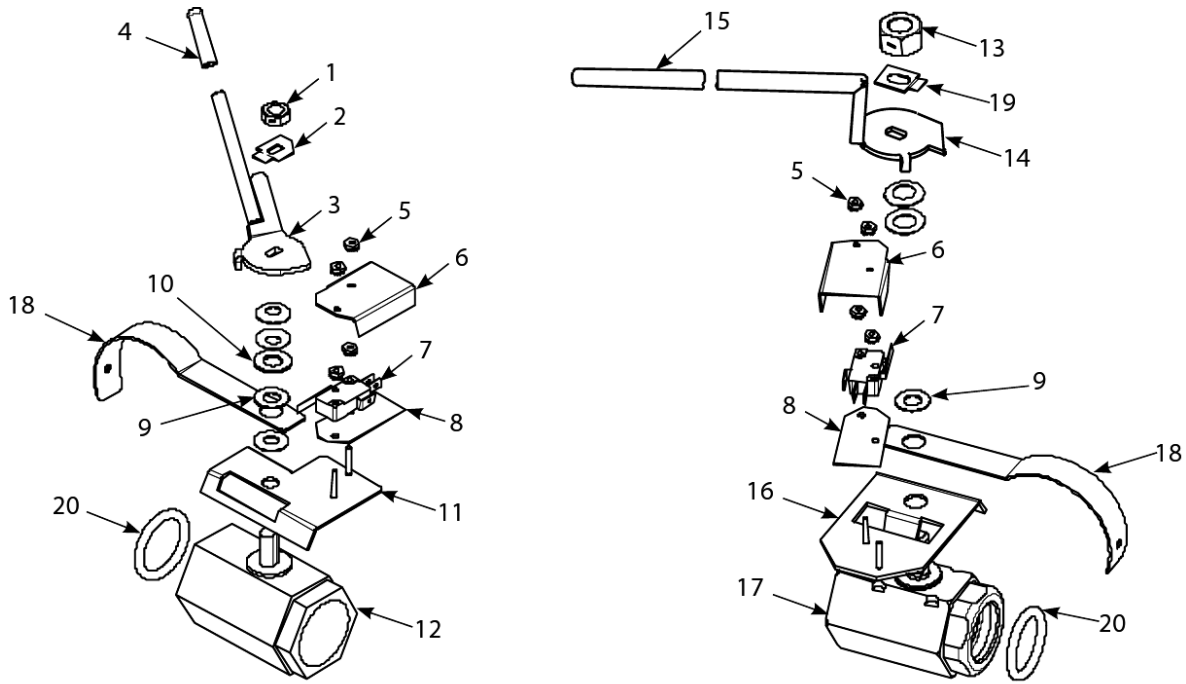
#	PART #	DESCRIPTION	QTY	Note
1	8234625	Drain Tube, Short Full-Vat Left Open/Right End Closed	1	
1a	8234624	Drain Tube, Left/Right End Short, Dual-Vat 3"	1	
2	8234643	Drain Tube, Full-Vat, Short, Open Both Ends	1	
2a	8234642	Drain Tube, Left/Right Open Short, Dual-Vat 3"	1	
3	8234639	Drain Tube, Long Full-Vat Left Open/Right End Closed	1	
3a	8234638	Drain Tube, Right End Long, Dual-Vat 3"	1	
4	8234641	Drain Tube, Long Full-Vat Open Both Ends	1	
4a	8234640	Drain Tube, Left/Right Open Long, Dual-Vat 3"	1	
5	8234892	Drain Outlet Center Dump	1	
6	8160729	Sleeve, Drain Connector	1	
7	8090969	Clamp 3"	1	
8	8102492	Fitting, Quick-Connect Straight	1	[1]
9	KIT6033	Kit, Round Drain Clamp	1	[2]
10	8111071	Tube, 0.25-inch OD Teflon Manifold Vent	1	

PART NOTES:

- [1] - receives Teflon vent tube
- [2] - 2 of Item 7 and 1 of Item 6

BIPH14-MPH14 Series Electric Fryers

Euro-Look Drain Valves and Associated Parts (Units with Built-In Filtration)



Euro-Look Drain Valves and Associated Parts (Units with Built-In Filtration)

BIPH14-MPH14 Series Electric Fryers

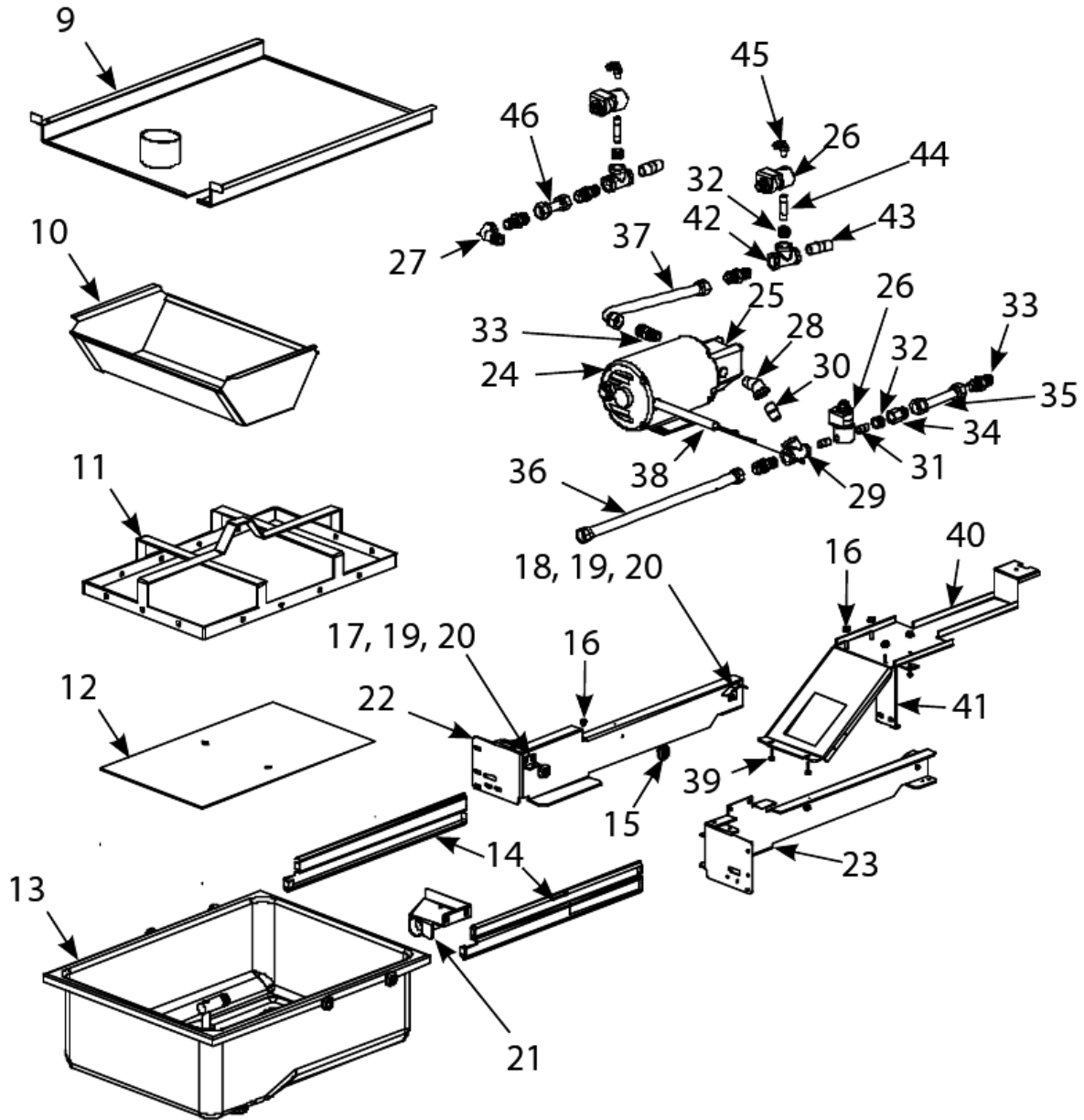
Euro-Look Drain Valves and Associated Parts (Units with Built-In Filtration)

#	PART #	DESCRIPTION	QTY	Note
1	8090539	Nut, 0.375-16 2-Way Lock	1	
2	9002934	Retainer, Dual-Vat Drain Valve Nut	1	
3	8234133	Handle, Dual-Vat Drain Valve	1	
4	8100677	Grip, Handle Round	1	
5	8261366	Nut - #4-40 Keps Hex	1	
6	9012348	Cover, Dual-Vat Left Drain Safety Switch	1	
7	8072103	Microswitch	1	
8	8160220	Insulation, Microswitch	1	
9	8101165	Washer, Teflon Drain Valve	1	
10	8090196	Washer, 0.375-inch SAE Flat	1	
11	1062671	Bracket Assembly, Dual-Vat Left Drain Safety Switch	1	
12	8101114	Drain Valves, Dual-vat, 1-inch Drain Valve	1	
13	8090540	Nut, Lock 0.5-inch-13 Hex 2-Way ZP	1	
14	8241602	Handle, Valve, Full-vat	1	
15	8160639	Cap, Vinyl Red	1	
16	8068137	Bracket Assembly, Full-Vat Drain Safety Switch	1	
17	8101018	Drain Valve, 1.25", Left	1	
18	2006496	Support, Drain Tube	1	
19	9002936	Retainer Nut (FV)	1	
20	8160135	O-ring	1	
21	WIR0572	Wire Bundle, Drain Safety Switch	1	

Euro-Look Drain Valves and Associated Parts (Units with Built-In Filtration)

BIPH14-MPH14 Series Electric Fryers

Filtration System Components



BIPH14-MPH14 Series Electric Fryers

Filtration System Components

#	PART #	DESCRIPTION	QTY	Note
1	8261979	Filter Pan Roller Kit	1	[1]
2	8261980	Service Filter Pan	1	[2]
3	8261981	Service Filter Pan Assembly	1	[3]
4	8261392	O-Ring	5	[4]
5	8130568	Plug, 0.125" SS NPT, Sq-Head	1	[5]
6	8111071	Tube, 0.25-inch OD Teflon Manifold Vent	1	[6]
7	1062851SP	Heater Strip Assembly, 100-120V	1	
8	8071098	Heater Strip Assembly, 240V, 25W 18"	1	
9	8234637	Lid	1	
9a	8234391	Lid (for units built before Feb 04)	1	[7]
10	8103161	Crumb Tray	1	
11	8102183	Hold-Down Ring	1	
12	2002240	SanaGrid Filter Screen, Standard Size Filter Pan	1	
13	1081204SP	Pan, One-Piece Filter	1	[8]
14	8102012	Rail Set, Filter Pan Roller	1	[9]
15	8102198	Roller, Filter Pan and Rail	1	
16	8261368	Nut - 0.25-20 Serrated Flange	10	
17	8234675	Bracket, Lid Support	1	
17a	8233875	Bracket, Lid Support	1	[7]
18	2003556	Guide, Filter Pan Lid	1	
18a	2006709	Toggle Switch	1	
19	8090104	Screw, 8-32 x 0.5-inch Slotted Head ZP	1	
20	8090247	Nut - #8-32 Keps Hex	1	
21	8233879	Suction Tube	1	
22	2004408	Rail, Left Filter	1	
23	2004409	Rail, Right Filter	1	
24	8261785	Motor and Gasket Kit - 100V/50-60 Hz	1	
24a	8261712	Motor and Gasket Kit - 115V/50-60 Hz	1	
24b	8261756	Motor and Gasket Kit - 208V/50-60 Hz	1	
24c	8261270	Motor and Gasket Kit - 220-240V/50-60 Hz	1	
24d	8261755	Motor and Gasket Kit - 250V/50-60 Hz	1	
25	8261264	Pump Kit - 4 GPM	1	
25a	8261264	Pump Kit - 4 GPM	1	
25b	8160093	Gasket - Pump/Motor	1	
26	8072484	Solenoid Valve - 0.25"	1	
27	8130165	Elbow - 0.5" x 90° NPT Street	1	
28	8130342	Elbow, 0.5-inch 45° Street	1	
29	8130530	Tee, Reducing 0.5-inch x 0.25-inch x 0.5-inch	1	
30	8130022	Nipple, 0.5" Close NPT BM	1	
31	8130838	Nipple - 0.25" NPT	1	
32	8130304	Bushing, 0.5-inch NPT to 0.25-inch NPT Flush Reducing	1	
33	8101668	Male Adaptor - 0.625" OD x 0.5"	1	
34	8101669	Female Adaptor - 0.875" OD x 0.5"	1	
35	8101680	Flexline - 0.625" OD x 6.5" L	1	
36	8101369	Flexline - Oil Return - 17.5" L	1	
37	8101055	Flexline - 0.625" OD x 11.5" L	1	

Filtration System Components

BIPH14-MPH14 Series Electric Fryers

Filtration System Components

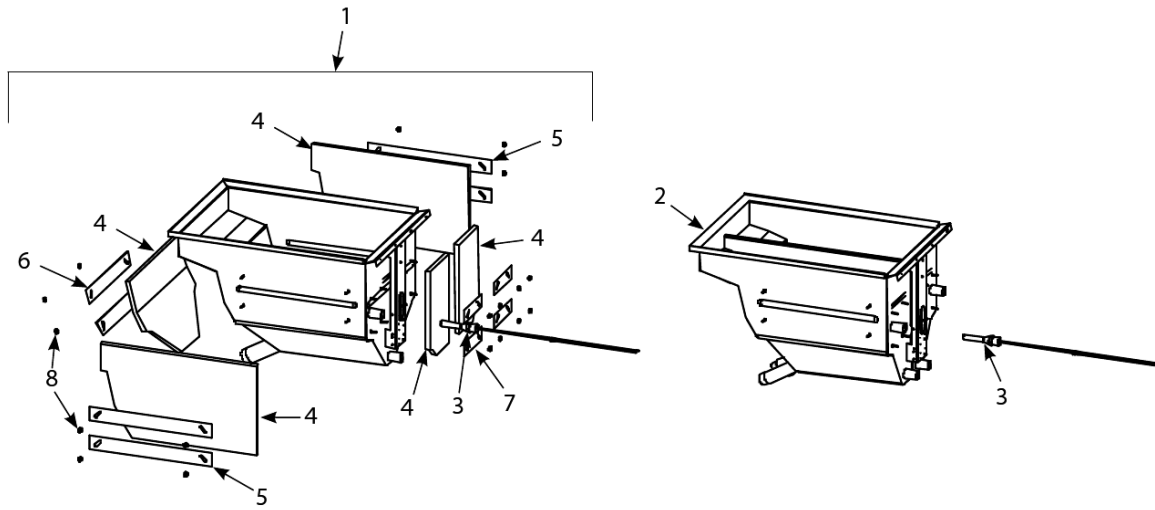
#	PART #	DESCRIPTION	QTY	Note
38	8073828	Cable, FootPrint Pro Pump Motor	1	
39	8261375	Screw - #10-32 x 0.75" - Hex Trim Head SS	5	
40	2005950	Bridge, Filter Motor	1	
41	2103149	Support, Contactor Box	1	
42	8130003-FRY	Tee - 0.5" NPT	1	
43	8130298	Nipple, 0.5" x 2.00" NPT BM Pipe	1	
44	8130537	Nipple - 0.25" x 2"	1	
45	8102493	Elbow, 90° 0.125-inch NPT x 0.25-inch Quick Connect	1	
46	8101160	Flexline - Oil Return - 3" L	1	
47	8101043	Flexline - Oil Return - 9.5" L	1	[10]
48	8101057	Flexline - Oil Return - 13" L	1	[10]

PART NOTES:

- [1] - four each of Items 15 and 16
- [2] - Item 13, four of Items 15 and 16, two o-rings, two 8130568
- [3] - Service Filter Pan plus Items 11 and 12
- [4] - used with Item 13
- [5] - used with Item 13; two required
- [6] - sold by the foot
- [7] - for units built before Feb 04
- [8] - includes Item 10
- [9] - includes one left and one right
- [10] - Euro-look

BIPH14-MPH14 Series Electric Fryers

Frypot Assemblies and Associated Parts



BIPH14-MPH14 Series Electric Fryers

Frypot Assemblies and Associated Parts

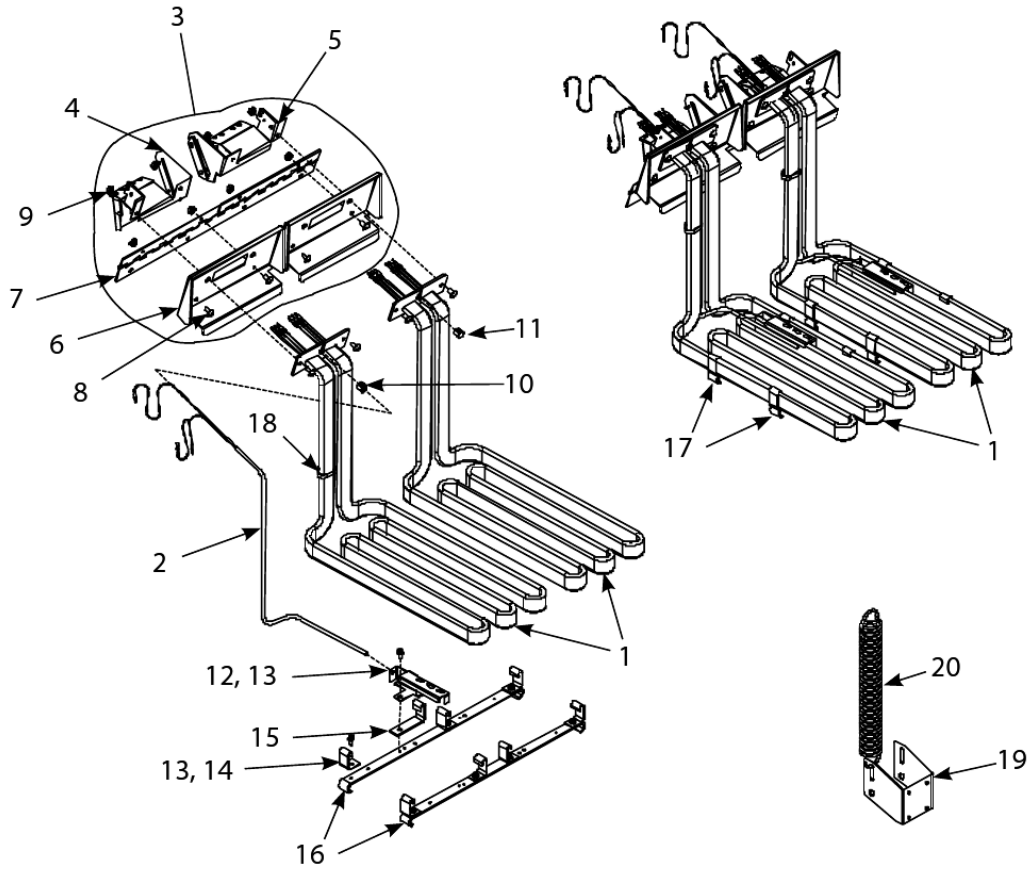
#	PART #	DESCRIPTION	QTY	Note
1	8234775	Frypot, McDonald's, Full-vat	1	
2	8234778SP	Frypot, McDonald's, Dual-vat	1	
3	8261177	Thermostat, High-Limit 425°F/218°C	1	[1]
3a	8068035SP	High-limit Thermostat	1	[2]
3b	8068132	High-Limit Thermostat, CE other than 22kW	1	[3]
4	8160773	Insulation - 0.5" x 10" x 20.5"	1	[4]
5	9004100	Retainer, Insulation—Side	1	
6	9004101	Retainer, Insulation—Front	1	
7	9001345	Retainer, Rear Insulation	1	
8	8261376	Nut - #10-32 Keps Hex	10	

PART NOTES:

- [1] - 218°C Color Coded Black
- [2] - 224°C Color Coded Red
- [3] - Color-Coded Yellow
213°C Color-Coded Yellow
- [4] - 4 required per pot

BIPH14-MPH14 Series Electric Fryers

Heating Element Assemblies and Associated Parts



Heating Element Assemblies and Associated Parts

BIPH14-MPH14 Series Electric Fryers

Heating Element Assemblies and Associated Parts

#	PART #	DESCRIPTION	QTY	Note
1	8262151	Element, 200V 17.0 kW	1	
1a	8262149	Element, 208V 17.0 kW	1	
1b	8262155	Element, 220V 17.0 kW	1	
1c	8262152	Element, 230V 17.0 kW	1	
1d	8262153	Element, 230V/400V 7.0/8.5 kW	1	[1]
1e	8262154	Element, 240V 17.0 kW	1	
1f	8262161	Element, 480V 17.0 kW	1	
2	8261526	Probe, Temperature	1	
3	1060004SP	Tilt Plate Assembly	1	
4	1060572SP	Tilt Plate Assembly, Bracket, Left Spring Slot	1	
5	1060573SP	Tilt Plate Assembly, Bracket, Right Spring Slot	1	
6	9109641	Tilt Plate	1	
7	8100035	Hinge	1	
8	8261330	Screw, 10-32 x 0.375-inch Slot Head SS	25	
9	8261376	Nut - #10-32 Keps Hex	10	
10	8261339	Bushing, .375-inch Split	10	
11	8160480	Plug, .375-inch Dome	1	
12	9105022	Bracket, Temperature Probe	1	
13	8090518	Screw, 8-32 x 0.375-inch Hex Washer Slotted Head SS	1	
14	9102042	Clamp, Element	1	[2]
15	9105213	Clamp, Element and Probe	1	[3]
16	9103681	Support, Full-Vat Element Rear	1	
17	9105214	Element Support, Dual-vat	1	
18	8090567	Tie-Wrap - Metal	1	
19	2002060	Bracket, Lower Spring Slot	1	
20	8100297	Spring, Element	1	
21	8261061	Tilt Switch, Mercury Non-CE	1	[4]
22	8262228	Tilt Switch, CE	1	[5]

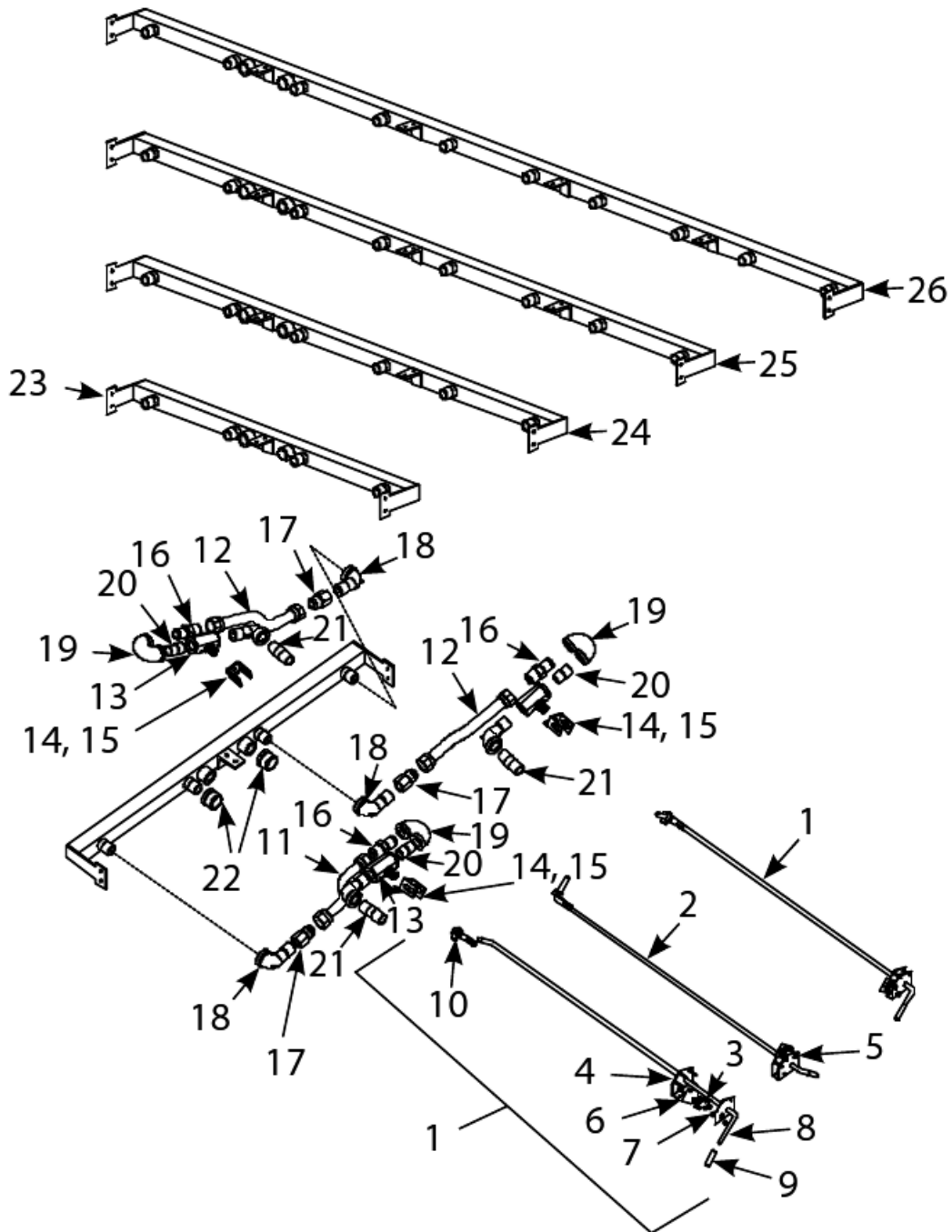
PART NOTES:

- [1] - used in export 3-phase 4-wire wye units
- [2] - Short
Short
- [3] - Long
Long
- [4] - Full-Vat requires one switch and Dual-Vat requires two
Full-Vat requires one switch and Dual-Vat requires two.
- [5] - Full-Vat requires one switch and Dual-Vat requires two
CE fryers Full-Vat requires one switch and Dual-Vat requires two.

Heating Element Assemblies and Associated Parts

BIPH14-MPH14 Series Electric Fryers

Oil Return System Components



Oil Return System Components

BIPH14-MPH14 Series Electric Fryers

Oil Return System Components

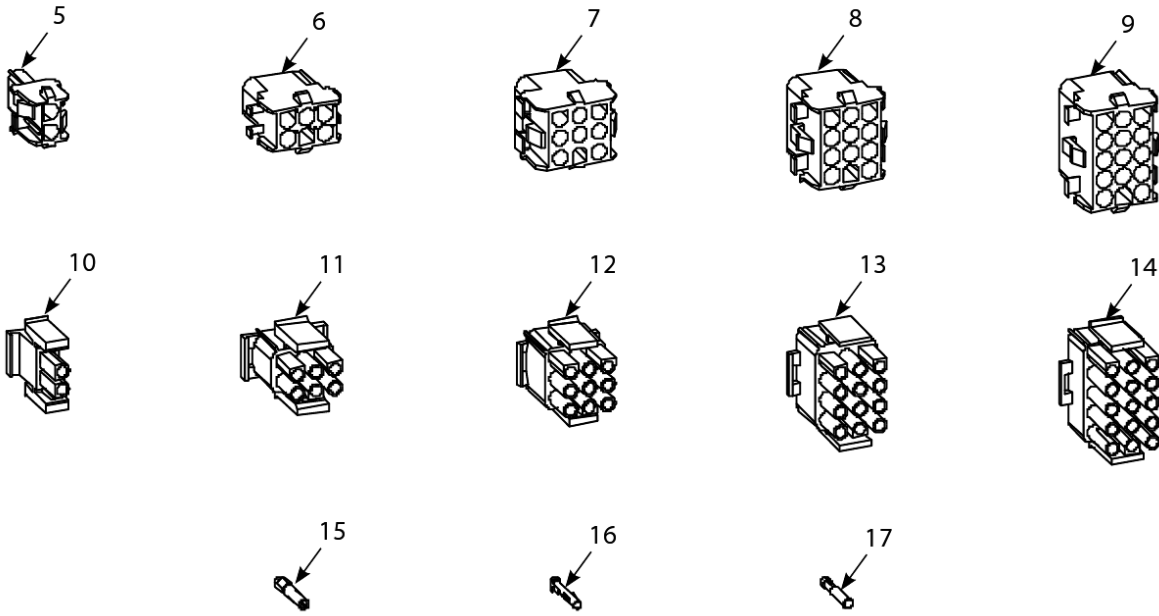
#	PART #	DESCRIPTION	QTY	Note
1	1062465SP	Handle Assembly, Full-Vat and Right Dual-Vat Rear Flush Complete	1	
2	1062687SP	Handle Assembly, Left Dual-Vat Rear Flush Complete	1	
3	8072103	Microswitch	1	
4	1063349	Bracket, Oil Return Microswitch	1	
5	2005401	Bracket, Handle Retainer	1	
6	8160220	Insulation, Microswitch	1	
7	8261366	Nut - #4-40 Keps Hex	25	
8	8102534	Rod, Full-Vat and Right Dual Vat Rear Flush	1	
8a	8102533	Rod, Left Dual Vat Rear Flush	1	
9	8100677	Grip, Handle Round	1	
10	8090601	Clip, Clevis	1	
11	8102532	Flexline - 7" L	1	
12	8101067	Flexline - Oil Return - 0.625" OD x 8.5" L	1	
13	8100278	Valve, 0.5" Ball	1	
14	2005438	Handle, Rear Flush Valve	1	
15	9002935	Retainer, Nut Oil Return Valve	1	
16	8101668	Male Adaptor - 0.625" OD x 0.5"	1	
17	8101669	Female Adaptor - 0.875" OD x 0.5"	1	
18	8130165	Elbow - 0.5" x 90° NPT Street	1	
19	8130570	Elbow, 180° 0.5-inch NPT	1	
20	8130022	Nipple, 0.5" Close NPT BM	1	
21	8130298	Nipple, 0.5" x 2.00" NPT BM Pipe	1	
22	8130469	Cap, 0.5-inch NPT Pipe	1	
23	8102255	Manifold, Two-Station Fryer	1	
23a	8102543	Manifold, Two-Station Fryer	1	[1]
24	8103016	Manifold, Three-Station Fryer	1	
24a	8102544	Manifold, Three-Station Fryer	1	[1]
25	8103017	Manifold, Four-Station Fryer	1	
25a	8102545	Manifold, Four-Station Fryer	1	[1]
26	8102312	Manifold, Five-Station Fryer	1	
26a	8102546	Manifold, Five-Station Fryer	1	[1]

PART NOTES:

[1] - for non-filter units

BIPH14-MPH14 Series Electric Fryers

Wiring Connectors, Pin Terminals, and Power Cords



BIPH14-MPH14 Series Electric Fryers

Wiring Connectors, Pin Terminals, and Power Cords

#	PART #	DESCRIPTION	QTY	Note
1	8070154	Power Cord - 120V w/Ground Plug	1	
2	8071685	Power Cord - 450V - 18A - 110-inch, 3-wire, 16-gauge	1	
3	8066083	5-Wire with 4-Prong Twist-Lock Plug, 120V	1	
4	8073817	Power Cord - 208-250V/3 Ph - 74A - 96" - 4-wire w/plug 8 awg	1	
5	8071068	2-Pin Female	1	
6	8070158	6-Pin Female	1	
7	8070156	9-Pin Female	1	
8	8070159	12-Pin Female	1	
9	8070875	15-Pin Female	1	
10	8071067	2-Pin Male	1	
11	8070157	6-Pin Male	1	
12	8070155	9-Pin Male	1	
13	8070160	12-Pin Male	1	
14	8070804	15-Pin Male	1	
15	8261341	Terminal, Female Split Pin	25	
16	8261342	Terminal, Male Split Pin	25	
17	8072518	Plug, Mate-N-Lock	1	[1]

PART NOTES:

[1] - Dummy Pin