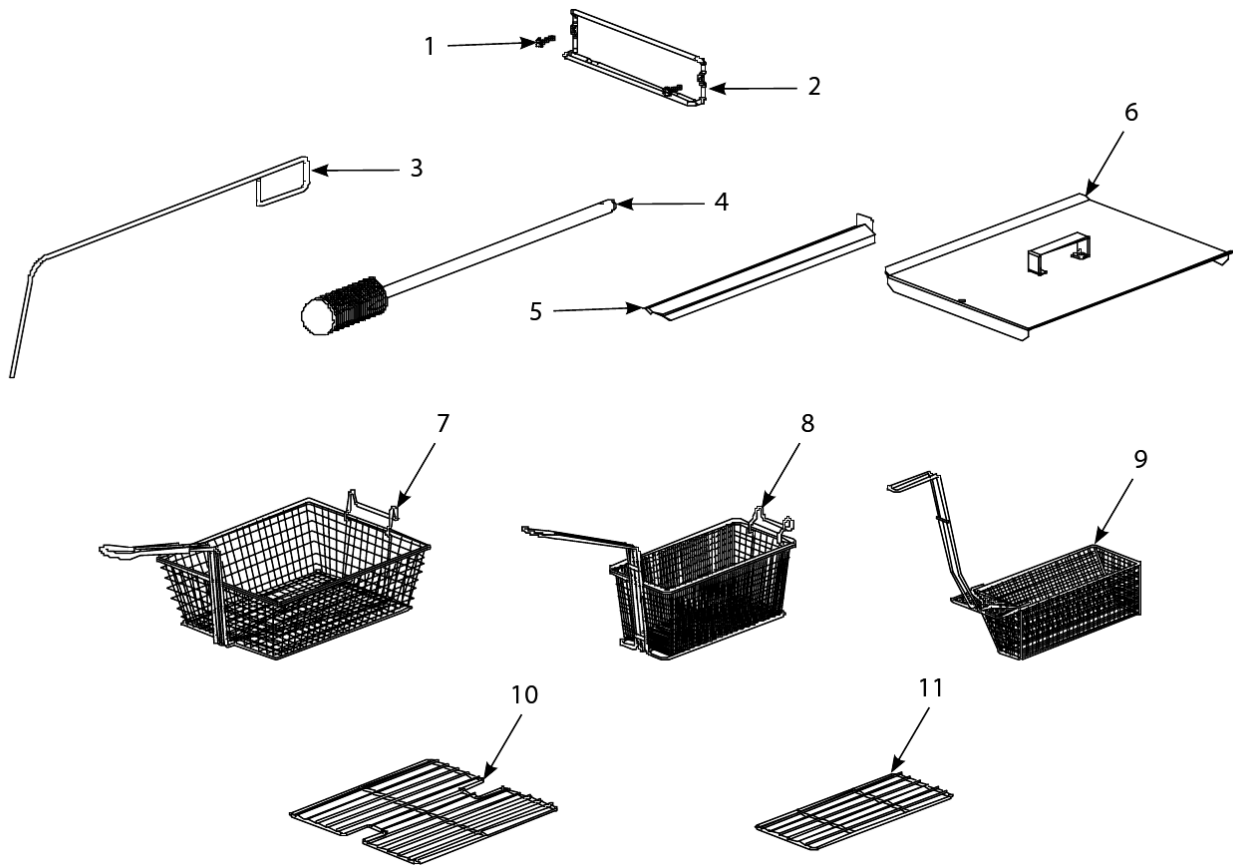


# BIRE14-MRE14 Series Electric Fryers

## Accessories



# BIRE14-MRE14 Series Electric Fryers

## Accessories

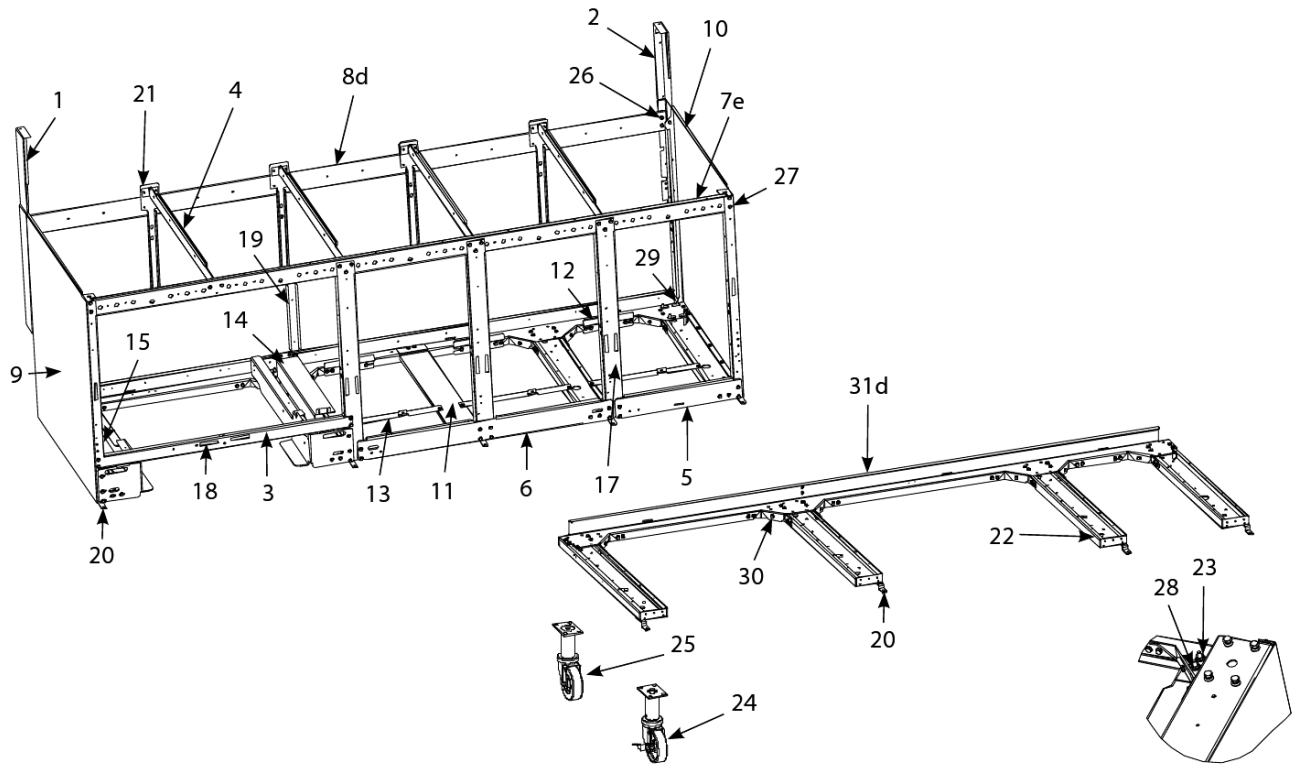
#	PART #	DESCRIPTION	QTY	Note
1	8090171	Thumbscrew, 0.25-20 x 1.375-inch	1	
2	8102793	Hanger - Wireform Basket	1	
2a	8090921-FRY	Spacer, Basket Hanger	1	
3	8030197	Fryer's Friend	1	
4	8030209	Brush, Frypot	1	
5	8235772	Connecting Strip, Frypot	1	
6	8063068	Cover, Full-Vat Frypot	1	
6a	8063071	Cover, Dual Vat Frypot	1	
7	8030099	Basket, Full Size	1	
8	8030271	Basket, Twin Size	1	[1]
9	8030122	Sediment Tray, Dual-vat, Left	1	
9a	8030123	Sediment Tray, Dual-vat, Right	1	
9b	8030113	Sediment Tray, Full-vat	1	
10	8030132	Rack, Full-Vat Basket Support	1	
11	8030106	Rack, Electric Dual-Vat Basket Support	1	
12	8030002	Powder, Filter	1	[2]
13	8030046	Cup, Plastic Filter Powder Measuring	1	
14	8030170	Filter Paper, 16.5" x 25.75"	1	

### PART NOTES:

- [1] - Twin
- [2] - 80- 1-Cup Applications

# BIRE14-MRE14 Series Electric Fryers

## Cabinetry - Cabinets, Bases, Braces, and Associated Parts



Cabinetry - Cabinets, Bases, Braces, and Associated Parts

FRY\_P\_0029\_2\_15\_Cabinetry - Cabinets, Bases, Braces, and Associated Parts.pdf



# BIRE14-MRE14 Series Electric Fryers

## Cabinetry - Cabinets, Bases, Braces, and Associated Parts

#	PART #	DESCRIPTION	QTY	Note
1	1063828	Upright Assembly, Left	1	
2	1063829	Upright Assembly, Right	1	
3	2001651	Support, Cross Cabinet	1	
4	2001659	Divider, Cabinet	1	
5	2002293-FRY	Brace, Lower Front	1	
6	2003774	Brace, Double Station Lower	1	
7	2007036	Brace, Front Horizontal, Single-Station Fryer	1	
7a	2200624	Brace, Front Horizontal, Single-Station Lower Brace	1	[1]
7b	2007037	Brace, Front Horizontal, Two-Station Fryer	1	
7c	2007038	Brace, Front Horizontal, Three-Station Fryer	1	
7d	2007039	Brace, Front Horizontal, Four-Station Fryer	1	
7e	2007040	Brace, Front Horizontal, Five-Station Fryer	1	
8	2005356	Brace, Rear Horizontal, Single-Station Fryer	1	
8a	2002284	Brace, Rear Horizontal, Two-Station Fryer	1	
8b	2002295	Brace, Rear Horizontal, Three-Station Fryer	1	
8c	2002725	Brace, Rear Horizontal, Four-Station Fryer	1	
8d	2003592	Brace, Rear Horizontal, Five-Station Fryer	1	
9	2310323SP	Side, Standard Cabinet Left SS	1	
9a	2210323SP	Side, Standard Cabinet Left SS - Enameled Steel	1	[2]
10	2320323SP	Side, Standard Cabinet Right SS	1	
10a	2220323SP	Side, Standard Cabinet Right SS (for Enameled Steel)	1	[2]
11	2201100	Corner Column Left - M,MS,MST	1	
12	2201095	Support, Rear Contactor Box	1	
13	2201093	Support, Front Contactor Box	1	
13a	2201294	Brace, Contactor Box Single-Station Fryer Front	1	
14	2220610	Bracket, Right Hand Mounting	1	
15	2210610	Bracket, Left Hand Mounting	1	
16	2006498	Support, Contactor Box (Singles)	1	
17	2004424	Post, Door	1	
18	8102346	Door Magnet - Horizontal	1	
19	2004786	Support, Oil Return Manifold	1	
20	2106862	Hinge, Door	1	
21	8241393	Bracket, Rear Support	1	
22	8244557	Channel, Base Side	1	
22a	2220621	Channel, Base Right Side Single-Station Fryer	1	
22b	2210621	Channel, Base Left Side Single-Station Fryer	1	
23	8090131	Screw, 0.25-20 x 0.75-inch Hex Head ZP	1	[3]
24	8100326	Caster, Adjustable Front (Before 6 Nov 2000)	1	
25	8100327	Caster 4" without Brake	1	
26	8261376	Nut - #10-32 Keps Hex	10	
27	8261374	Screw - #10 x 0.5" Hex Head	25	[4]
28	8261368	Nut - 0.25-20 Serrated Flange	1	
29	8090429	Bolt - 0.25"- 20 x 2.00" Hex Head ZP Tap	1	
30	2005417	Brace, Rear Channel Corner	1	
31	8235589	Channel, Base Rear, Single-Station Fryer	1	
31a	8234558	Channel, Base Rear, Two-Station Fryer	1	

## Cabinetry - Cabinets, Bases, Braces, and Associated Parts

# BIRE14-MRE14 Series Electric Fryers

## Cabinetry - Cabinets, Bases, Braces, and Associated Parts

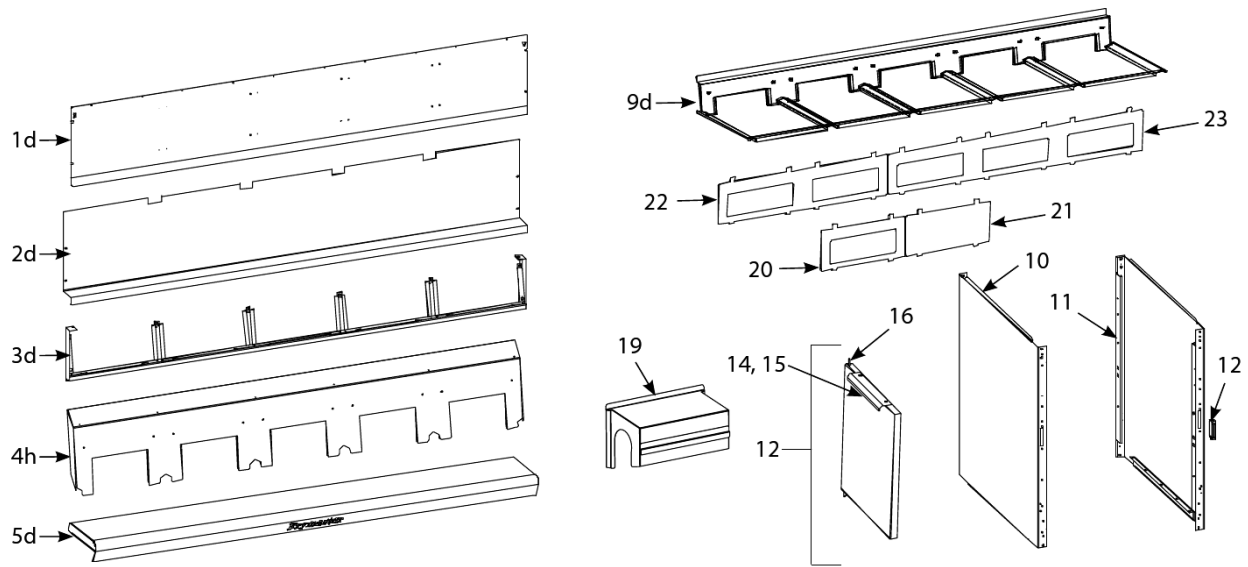
#	PART #	DESCRIPTION	QTY	Note
31b	8234560	Channel, Base Rear, Three-Station Fryer	1	
31c	8234561	Channel, Base Rear, Four-Station Fryer	1	
31d	8234562	Channel, Base Rear, Five-Station Fryer	1	
32	8103010	Leg, Single Fryer Single-Station Fryer	1	
33	8241705	Bridge Filter Motor Single Station Fryer Only	1	
34	8090495	Nut, 0.25-inch - 20 Press	1	

### PART NOTES:

- [1] - for Single-Station Lower Brace
- [2] - for CRS
- [3] - also used w/Screw to mount filter rails
- [4] - primary cabinet screw

# BIRE14-MRE14 Series Electric Fryers

## Cabinetry and Panels



# BIRE14-MRE14 Series Electric Fryers

## Cabinetry and Panels

#	PART #	DESCRIPTION	QTY	Note
1	2200421	Back Panel, Upper, Single Station Fryer CRS	1	
1a	2200419	Back Panel, Upper, Two Station Fryer CRS	1	
1b	2200423	Back Panel, Upper, Three Station Fryer CRS	1	
1c	2200425	Back Panel, Upper, Four Station Fryer CRS	1	
1d	2200611	Back Panel, Upper, Five Station Fryer CRS	1	
2	2200501	Back Panel, Center Single Station Fryer CRS	1	
2a	2200487	Back Panel, Center Two Station Fryer CRS	1	
2b	2200491	Back Panel, Center Three Station Fryer CRS	1	
2c	2200499	Back Panel, Center Four Station Fryer CRS	1	
2d	2200616	Back Panel, Center Five Station Fryer CRS	1	
3	1065016	Frame, Control Panel - Single	1	
3a	1065221	Frame, Control Panel - Two Station Fryer	1	
3b	1065018	Frame, Control Panel - Three Station Fryer	1	
3c	1065019	Frame, Control Panel, Four Station Fryer	1	
3d	1065020	Frame, Control Panel, Five Station Fryer	1	
4	8235402	Tilt Housing, Single Station, S/S	1	
4a	8235564	Tilt Housing, Single Station, S/S	1	[1]
4b	8235360	Tilt Housing, Two Station, S/S	1	
4c	8235570	Tilt Housing, Two Station, S/S	1	[1]
4d	8235492	Tilt Housing, Three Station, S/S	1	
4e	8235573	Tilt Housing, Three Station, S/S	1	[1]
4f	8235576	Tilt Housing, Four Station, S/S	1	
4g	8235577	Tilt Housing, Four Station, S/S	1	[1]
4h	8235578	Tilt Housing, Five Station, S/S	1	
4i	8235579	Tilt Housing, Five Station, S/S	1	[1]
5	2601230SP	Top Cap - Single	1	[2]
5a	1065196	Top Cap - Two Station Fryer	1	[2]
5b	1065197	Top Cap - Three Station Fryer	1	[3]
5c	1065198	Top Cap, Four Station	1	[4]
5d	1065199	Top Cap, Five Station	1	[5]
5e	8090078	10-32 Nutserts	1	
6	2009614	Heat Shield - Single	1	
7	2009610	Heat Shield - Two/Four Station Fryer	1	[6]
8	2009611	Heat Shield - Three Station Fryer	1	[7]
9	8235715	Cap-N-Splash, Single Station	1	
9a	8235708	Cap-N-Splash, Two Station	1	
9b	8235706	Cap-N-Splash, Three Station	1	
9c	8235710	Cap-N-Splash, Four Station	1	
9d	8235713	Cap-N-Splash, Five Station	1	
10	2310323SP	Side, Standard Cabinet Left SS	1	
10a	2210323SP	Side, Standard Cabinet Left SS - Enameled Steel	1	[8]
11	2320323SP	Side, Standard Cabinet Right SS	1	
11a	2220323SP	Side, Standard Cabinet Right SS (for Enameled Steel)	1	[8]
12	8101105	Door Magnet - Vertical	1	
13	1064397	Door - Left/Right	1	[9]
14	8090266	Screw, 10 x 0.5-inch Phillips Head ZP	1	

---

### Cabinetry and Panels

# BIRE14-MRE14 Series Electric Fryers

## Cabinetry and Panels

#	PART #	DESCRIPTION	QTY	Note
15	2109739	Handle, Eurolook Door	1	
16	1064067SP	Door Pin Assembly	1	
17	8261343	Spring - Door Pin Hinge	1	
18	8090970	Retaining Ring	1	
19	8235440	Cove, Element Tilt Housing	1	
20	2105046	Bezel - One-Controller	1	
21	2105623	Bezel, Insert for Remote Single-Controller	1	
22	2105819	Bezel - Two-Controller	1	
23	2106698	Bezel, Three-Controller	1	

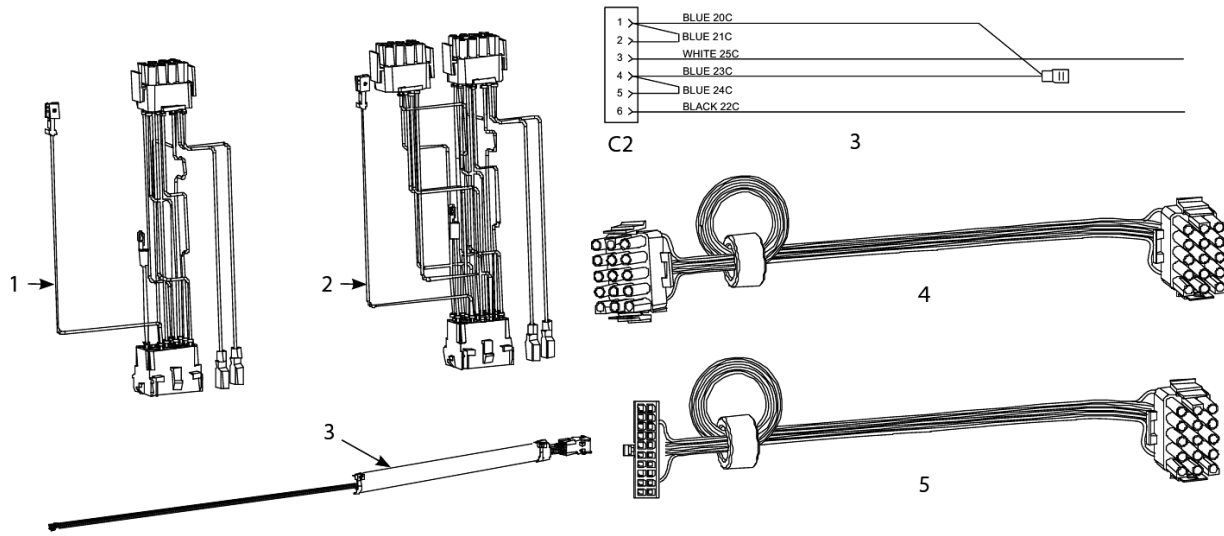
### PART NOTES:

- [1] - for Aluminized Steel
- [2] - Also requires four 10-32 Nutserts
- [3] - Also requires six 10-32 Nutserts
- [4] - Also requires eight 10-32 Nutserts
- [5] - Also requires ten 10-32 Nutserts
- [6] - Two are used on Four Station One used on Five station
- [7] - One used on Five Station
- [8] - for Enameled Steel
- [9] - Left shown – move handle to bottom for right



# BIRE14-MRE14 Series Electric Fryers

## Component Box and Filter Pump Wiring Harnesses



# BIRE14-MRE14 Series Electric Fryers

## Component Box and Filter Pump Wiring Harnesses

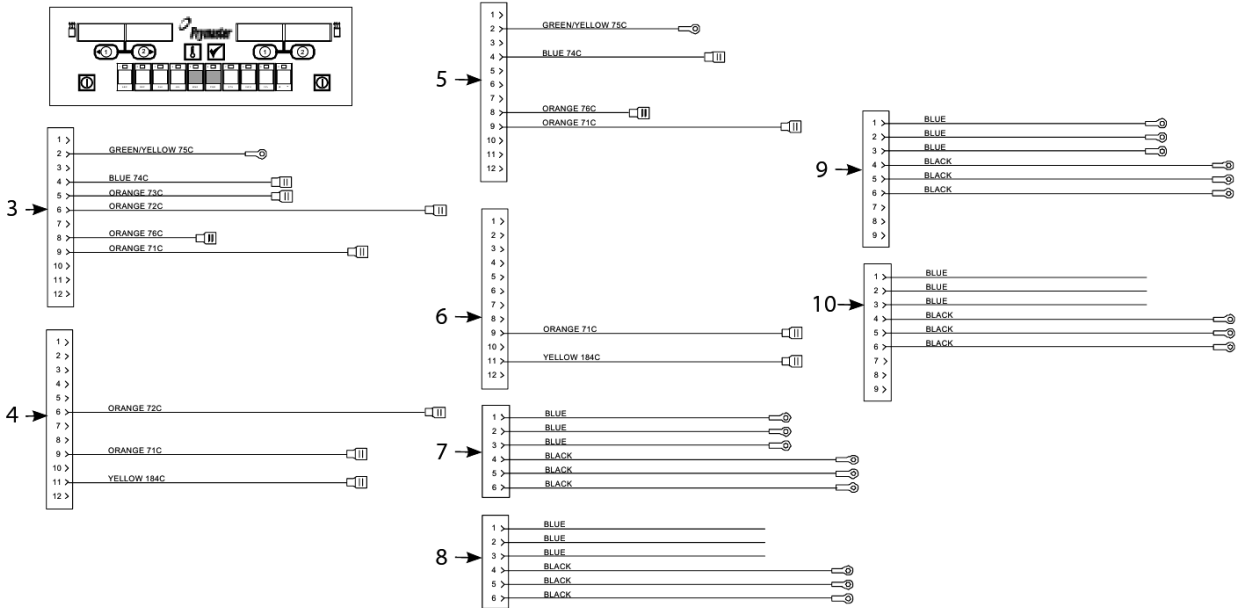
#	PART #	DESCRIPTION	QTY	Note
1	1065750	Harness, Full Vat Assembly	1	[1]
1a	1066639SP	Harness Assembly, FV Control	1	[2]
2	1065751	Harness Assembly, RE DV Control	1	[1]
2a	1066644SP	Dual Vat Control Harness J4 to J1 and J2 (EPRI)	1	[2]
3	1065935	Filter Pump C2 to Component Box Wiring Harness	1	
4	8062071SP	Standard Controller to Interface Board	1	
5	8074199	Cable, 20-pin Controller to 15-pin Interface Board – SMT for fryer's with CM 3.5 controller.	1	

### PART NOTES:

- [1] - Standard
- [2] - EPRI

# BIRE14-MRE14 Series Electric Fryers

## Computers, Contactor Box Wiring Assemblies



# BIRE14-MRE14 Series Electric Fryers

## Computers, Contactor Box Wiring Assemblies

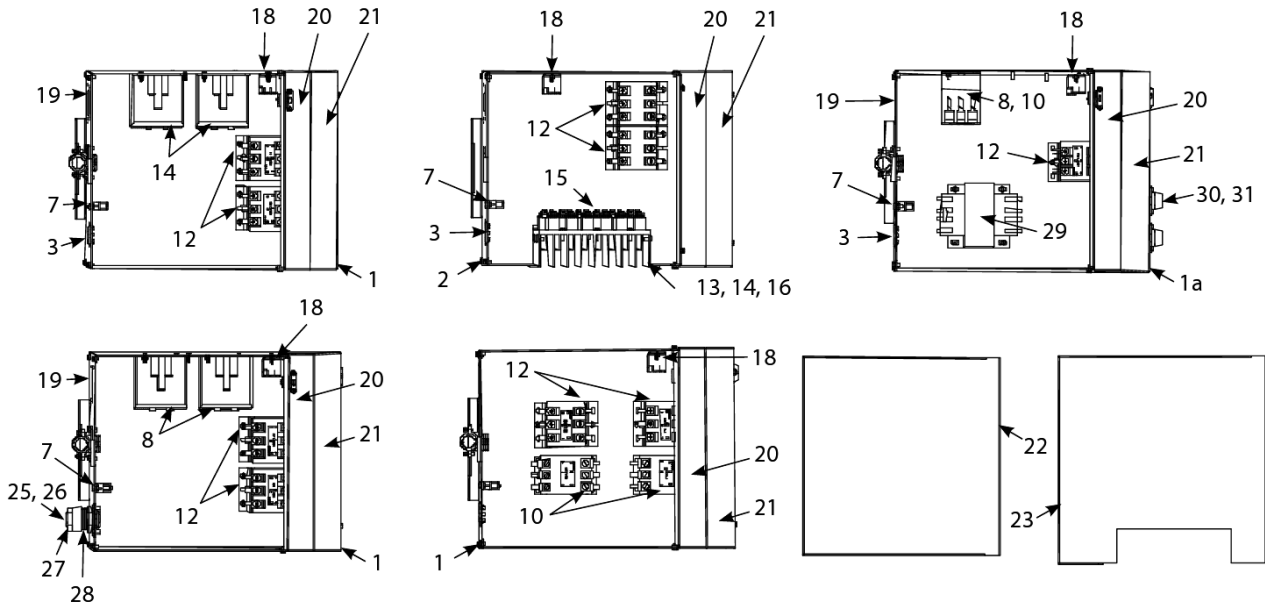
#	PART #	DESCRIPTION	QTY	Note
1	1061269	Replacement Computer, Non-CE Domestic M2000	1	
2	1060672	Replacement Computer - CE	1	
3	1065980	Contactor Box Harness Assembly Dual Vat, EPRI	1	
4	1065980	Contactor Box Harness Assembly Dual Vat, EPRI	1	
5	1066031	Contactor Box Wiring Assembly – 12-Pin Full-Vat C-1	1	
6	1066031	Contactor Box Wiring Assembly – 12-Pin Full-Vat C-1	1	
7	1066768	14/17 kW Standard Mercury	1	
8	1066771	14/17 kW Mechanical Contactor	1	
9	1066769	14/17 kW Standard Mercury	1	
10	1066772	14/17 kW Mechanical Contactor	1	

---

Computers, Contactor Box Wiring Assemblies

# BIRE14-MRE14 Series Electric Fryers

## Contactors Boxes - Large Center Contactor Box Configurations



Contactors Boxes - Large Center Contactor Box Configurations

# BIRE14-MRE14 Series Electric Fryers

## Contactors Boxes - Large Center Contactor Box Configurations

#	PART #	DESCRIPTION	QTY	Note
1	1066081	Box Assembly, Contactor (Non-Filter or Not Over the Filter Pan)	1	[1]
1a	1066255	Box, Large Contactor	1	
2	1066173	Box Assembly, Contactor EPRI	1	[1]
2a	1066244	Box Assembly, Contactor Single-Station Fryer Only	1	
3	8102554	Plug, Cord Cutout 1.125 Button	1	
4	8071947	Plug, .875	1	
5	2210482	Cover, Left Contactor Box	1	
6	2220482	Cover, Right Contactor Box	1	
7	8070070	Terminal, Ground Lug	1	
8	8071071	Contactor, Mercury 24 VAC 30 Amp	1	
9	8070884	Contactor, Mercury- 240VAC 50-Amp	1	
10	8072284	Contactor, 24V 50 Amp Mechanical	1	
11	8072283	Contactor, 24V 63 Amp Mechanical	1	
12	8101202	Contactor, 24V 40 Amp Mechanical	1	
13	8068674	Heat Sink Assembly, Dual-vat Solid State Relay	1	
14	8068673	Heat Sink Assembly, Full-vat Solid State Relay	1	
15	8261562	Relay with Heat Sink - 280V/40A	1	[2]
16	8072749	Heat Sink - Solid State	1	[2]
17	8070037	Terminal, 0.25-inch Push-on	1	[2]
18	8071683	Relay, 12VDC Secondary Blower Fan to cool frypot	1	
19	8235729	Plate, Contactor Back Cordset	1	
20	2201087	Bracket, Box Connecting	1	
21	2201088	Cover, Contactor Box Front	1	
22	2201089	Cover, Large Top	1	[1]
22a	2201175	Cover, Contactor Box Top Full Vat Single-Station Fryer Only	1	
22b	2201373	Cover, Contactor Box Top Dual Vat Single-Station Fryer Only	1	
23	2201152	Cover, Contactor Box Top EPRI (Non-Filter or Not Over the Filter Pan)	1	[1]
24	1066204SP	Filter Assembly, EPRI	1	[3]
25	8074316	Power Cords, 120V 5-wire, w/grounded plug BIRE/MRE	1	
26	8074317	Cord, Power – Euro 3-Wire 230/240V	1	
27	8071560	Strain Relief	1	
28	2201102	Plate, MRE Control Cord Relief	1	
29	8070064	Transformer, 480V/120V 150 VA	1	
30	8070922	Holder, Bus Fuse	1	
31	8072278	Fuse, 20 Amp	1	
32	8070012	Filter Relay - 18A 24VAC	1	

### PART NOTES:

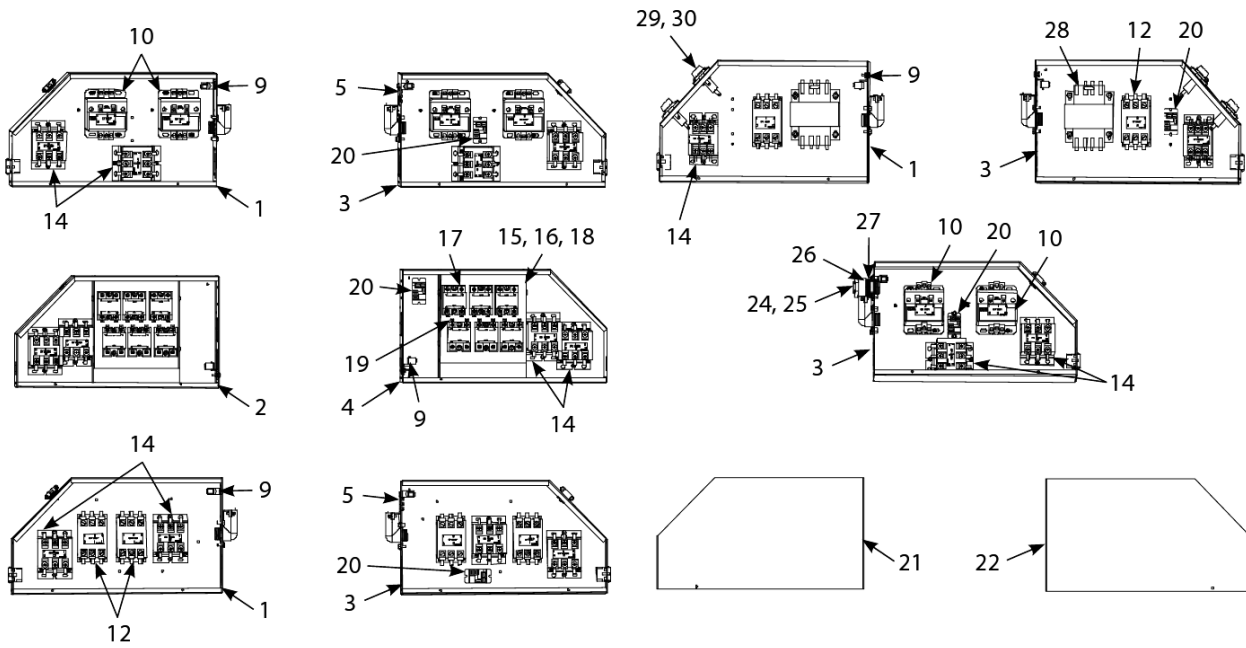
- [1] - Non-Filter or Not Over the Filter Pan
- [2] - Components of Items 13 and 14
- [3] - used in CE WYE-configured EPRI units only

---

## Contactors Boxes - Large Center Contactor Box Configurations

# BIRE14-MRE14 Series Electric Fryers

## Contactor Boxes - Left and Right Over the Filter Pan Configurations



Contactor Boxes - Left and Right Over the Filter Pan Configurations

# BIRE14-MRE14 Series Electric Fryers

## Contactor Boxes - Left and Right Over the Filter Pan Configurations

#	PART #	DESCRIPTION	QTY	Note
1	1065488	Box Assembly, Left Contactor Standard	1	[1]
2	8235736	Box Assembly, Left Contactor EPRI	1	[1]
3	1065489	Box Assembly, Right Contactor Standard	1	[1]
4	8235748	Box Assembly, Right Contactor EPRI	1	[1]
5	8102554	Plug, Cord Cutout 1.125 Button	1	
6	8071947	Plug, .875	1	
7	2210482	Cover, Left Contactor Box	1	
8	2220482	Cover, Right Contactor Box	1	
9	8070070	Terminal, Ground Lug	1	
10	8071071	Contactor, Mercury 24 VAC 30 Amp	1	
11	8070884	Contactor, Mercury- 240VAC 50-Amp	1	
12	8072284	Contactor, 24V 50 Amp Mechanical	1	
13	8072283	Contactor, 24V 63 Amp Mechanical	1	
14	8101202	Contactor, 24V 40 Amp Mechanical	1	
15	8068674	Heat Sink Assembly, Dual-vat Solid State Relay	1	
16	8068673	Heat Sink Assembly, Full-vat Solid State Relay	1	
17	8261562	Relay with Heat Sink - 280V/40A	1	
18	8072749	Heat Sink - Solid State	1	
19	8070037	Terminal, 0.25-inch Push-on	1	
20	8071683	Relay, 12VDC Secondary Blower Fan to cool frypot	1	
21	2210482	Cover, Left Contactor Box	1	[2]
22	2220482	Cover, Right Contactor Box	1	[2]
23	1066204SP	Filter Assembly, EPRI	1	[3]
24	8074316	Power Cords, 120V 5-wire, w/grounded plug BIRE/MRE	1	
25	8074317	Cord, Power – Euro 3-Wire 230/240V	1	
26	8071560	Strain Relief	1	
27	2201102	Plate, MRE Control Cord Relief	1	
28	8070064	Transformer, 480V/120V 150 VA	1	
29	8070922	Holder, Bus Fuse	1	
30	8072278	Fuse, 20 Amp	1	
31	2210610	Bracket, Left Hand Mounting	1	
31a	2220610	Bracket, Right Hand Mounting	1	
32	8070012	Filter Relay - 18A 24VAC	1	

### PART NOTES:

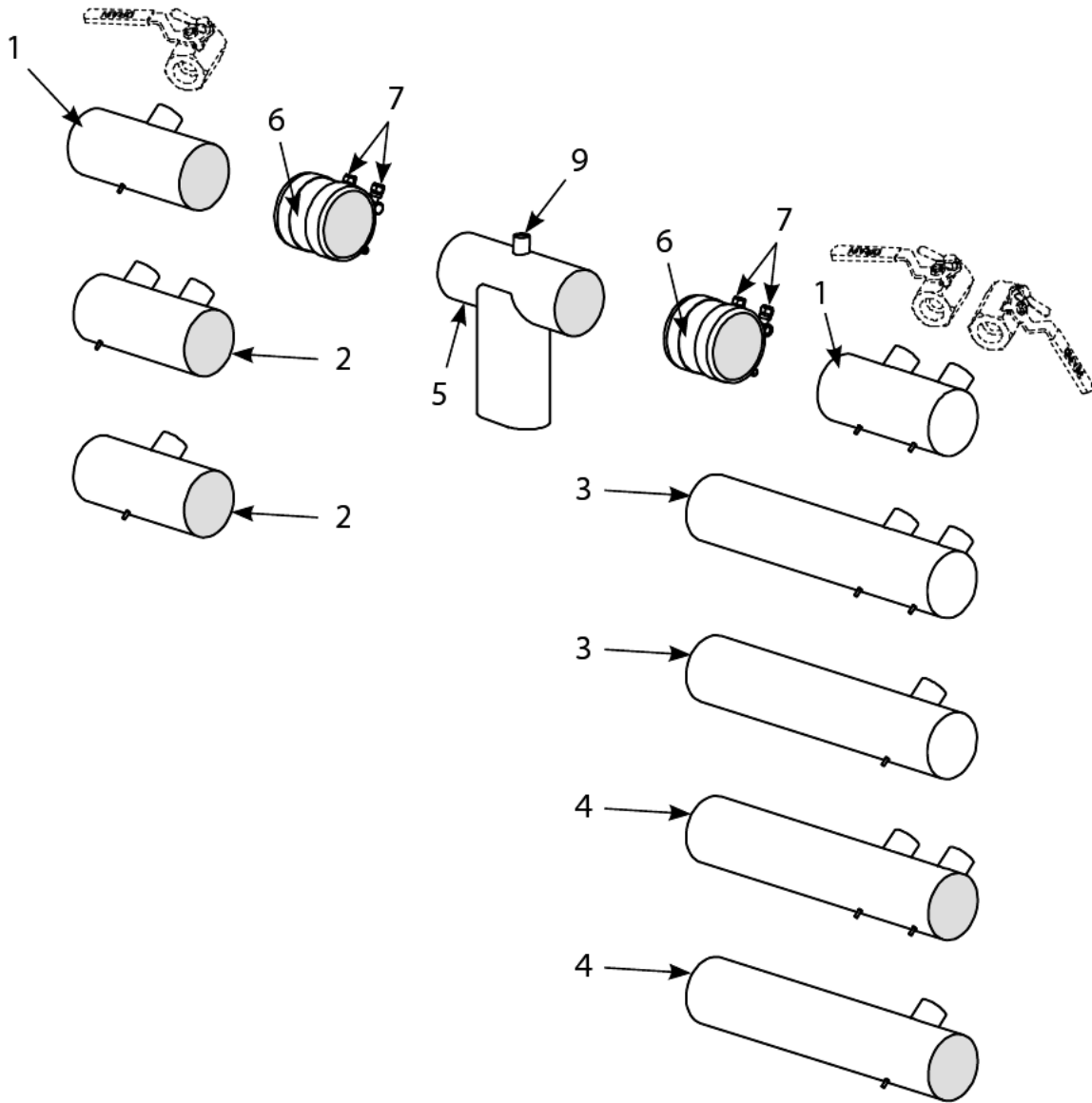
- [1] - Over the Filter Pan
- [2] - Over the Filter Pan Box
- [3] - used in CE WYE-configured EPRI units only

Contactor Boxes - Left and Right Over the Filter Pan Configurations



# BIRE14-MRE14 Series Electric Fryers

## Drain System Components - Drain Tube Sections and Associated Parts



Drain System Components - Drain Tube Sections and Associated Parts

# BIRE14-MRE14 Series Electric Fryers

## Drain System Components - Drain Tube Sections and Associated Parts

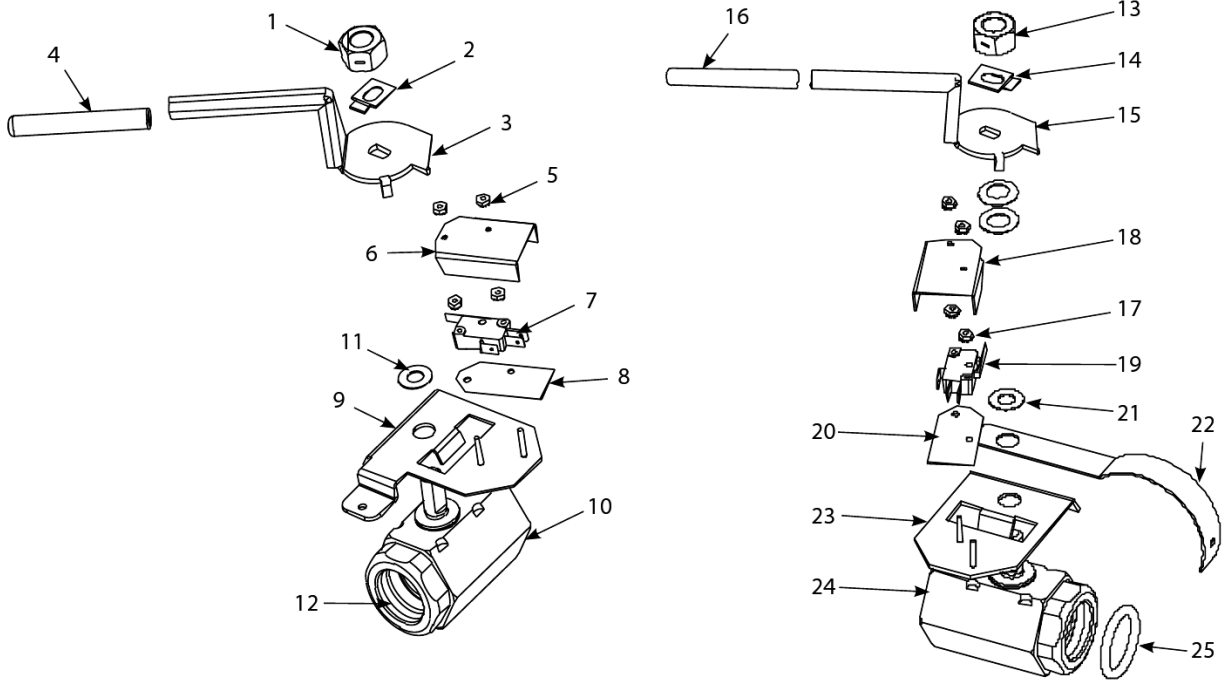
#	PART #	DESCRIPTION	QTY	Note
1	8234625	Drain Tube, Short Full-Vat Left Open/Right End Closed	1	
1a	8234624	Drain Tube, Left/Right End Short, Dual-Vat 3"	1	
2	8234643	Drain Tube, Full-Vat, Short, Open Both Ends	1	
2a	8234642	Drain Tube, Left/Right Open Short, Dual-Vat 3"	1	
3	8234639	Drain Tube, Long Full-Vat Left Open/Right End Closed	1	
3a	8234638	Drain Tube, Right End Long, Dual-Vat 3"	1	
4	8234641	Drain Tube, Long Full-Vat Open Both Ends	1	
4a	8234640	Drain Tube, Left/Right Open Long, Dual-Vat 3"	1	
5	8234892	Drain Outlet Center Dump	1	
6	8160729	Sleeve, Drain Connector	1	
7	8090969	Clamp 3"	1	
8	8160630	Cap, Vinyl Black	1	
9	8102492	Fitting, Quick-Connect Straight	1	[1]
10	KIT6033	Kit, Round Drain Clamp	1	[2]
11	8111071	Tube, 0.25-inch OD Teflon Manifold Vent	1	[3]

### PART NOTES:

- [1] - receives Teflon vent tube
- [2] - includes Clamp and Sleeve
- [3] - sold by the foot

# BIRE14-MRE14 Series Electric Fryers

## Drain System Components - Drain Valves and Associated Parts (Built-In Filtration)



Drain System Components - Drain Valves and Associated Parts (Built-In Filtration)

# BIRE14-MRE14 Series Electric Fryers

## Drain System Components - Drain Valves and Associated Parts (Built-In Filtration)

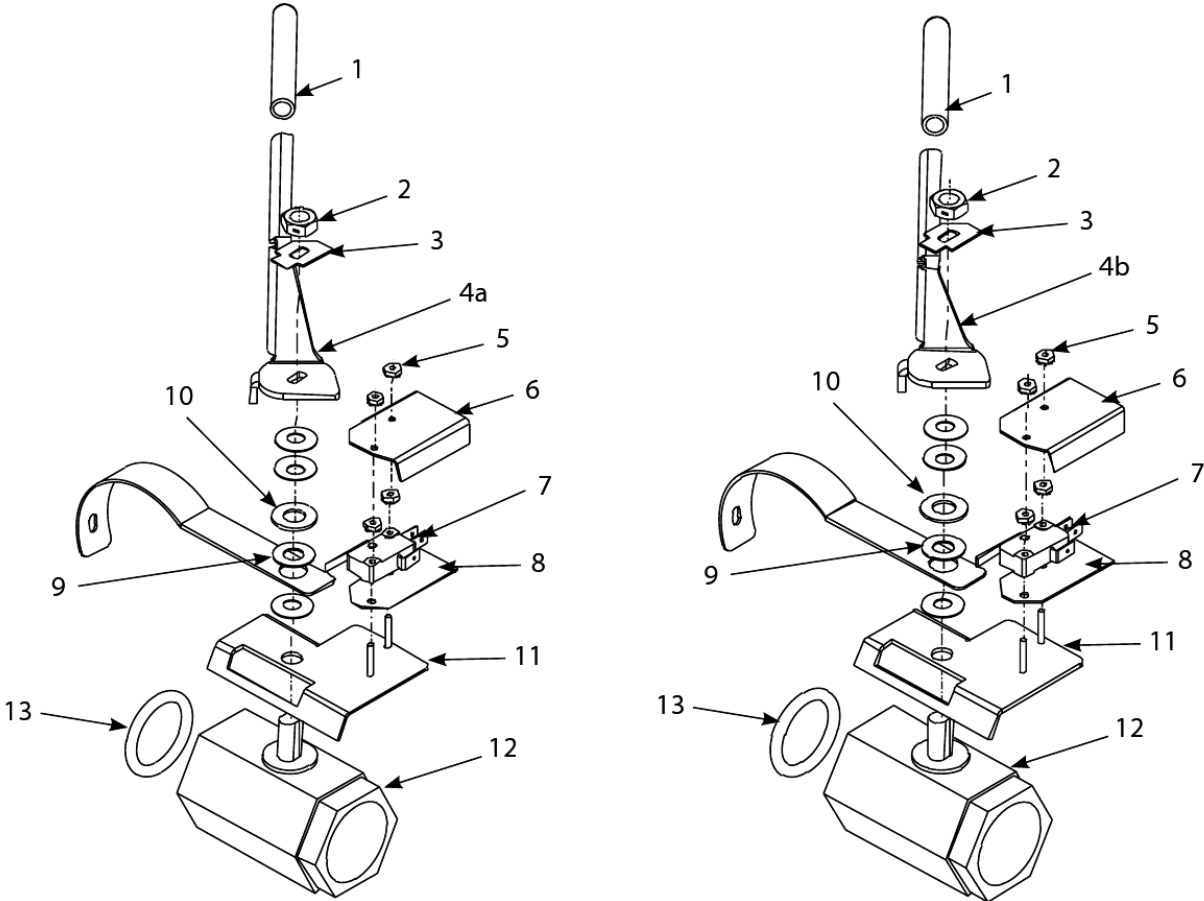
#	PART #	DESCRIPTION	QTY	Note
1	8090540	Nut, Lock 0.5-inch-13 Hex 2-Way ZP	1	
2	9002936	Retainer Nut (FV)	1	
3	8241602	Handle, Valve, Full-vat	1	
4	8160639	Cap, Vinyl Red	1	
5	8261366	Nut - #4-40 Keps Hex	1	
6	9012348	Cover, Dual-Vat Left Drain Safety Switch	1	
7	8072103	Microswitch	1	
8	8160220	Insulation, Microswitch	1	
9	1065391	Bracket Assembly, Full-Vat Drain Safety Switch Single Footprint Only	1	
10	8101018	Drain Valve, 1.25", Left	1	
11	8101165	Washer, Teflon Drain Valve	1	
12	8160135	O-ring	1	
13	8090540	Nut, Lock 0.5-inch-13 Hex 2-Way ZP	1	
14	9002936	Retainer Nut (FV)	1	
15	8241602	Handle, Valve, Full-vat	1	
16	8160639	Cap, Vinyl Red	1	
17	8261366	Nut - #4-40 Keps Hex	1	
18	9012348	Cover, Dual-Vat Left Drain Safety Switch	1	
19	8072103	Microswitch	1	
20	8160220	Insulation, Microswitch	1	
21	8101165	Washer, Teflon Drain Valve	1	
22	2006496	Support, Drain Tube	1	
23	8068137	Bracket Assembly, Full-Vat Drain Safety Switch	1	
24	8101018	Drain Valve, 1.25", Left	1	
25	8160135	O-ring	1	

---

Drain System Components - Drain Valves and Associated Parts (Built-In Filtration)

# BIRE14-MRE14 Series Electric Fryers

## Drain System Components - Drain Valves and Associated Parts (Built-In Filtration)\_



# BIRE14-MRE14 Series Electric Fryers

## Drain System Components - Drain Valves and Associated Parts (Built-In Filtration)\_

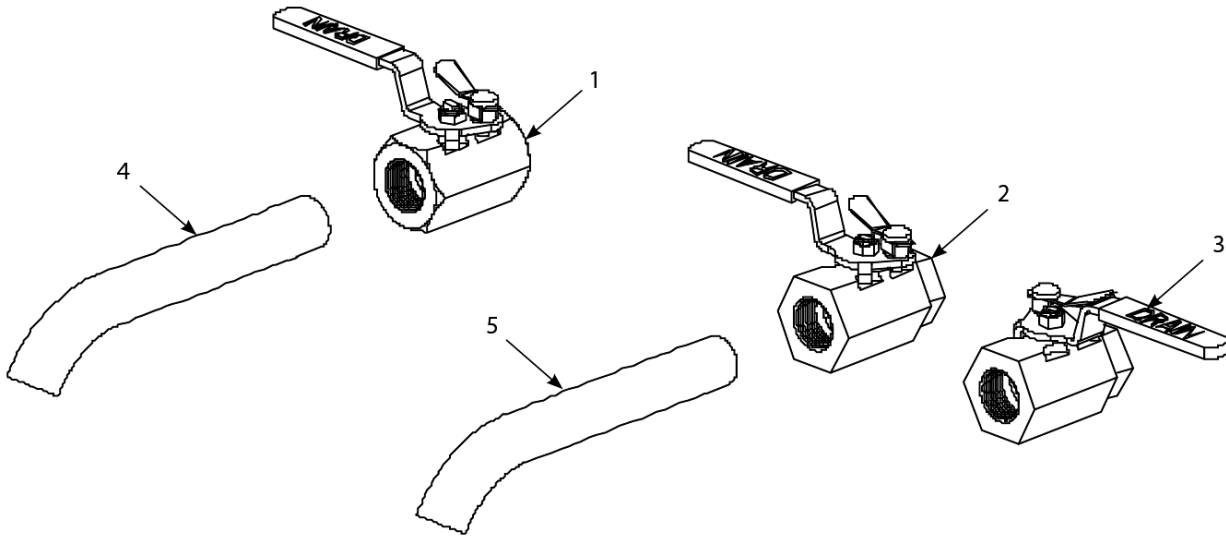
#	PART #	DESCRIPTION	QTY	Note
1	8160639	Cap, Vinyl Red	1	
2	8090539	Nut, 0.375-16 2-Way Lock	1	
3	9002934	Retainer, Dual-Vat Drain Valve Nut	1	
4a	8241636	Handle, Valve, Dual-vat, Right	1	
4b	8241637	Handle, Valve, Dual-vat, Left	1	
5	8261366	Nut - #4-40 Keps Hex	1	
6	9012348	Cover, Dual-Vat Left Drain Safety Switch	1	
7	8072103	Microswitch	1	
8	8160220	Insulation, Microswitch	1	
9	8101165	Washer, Teflon Drain Valve	1	
10	8090196	Washer, 0.375-inch SAE Flat	1	
11	1062671	Bracket Assembly, Dual-Vat Left Drain Safety Switch	1	
11a	1066304	Bracket Assembly, Dual-Vat Drain Safety Switch Single Footprint Only	1	
12	8101114	Drain Valves, Dual-vat, 1-inch Drain Valve	1	
13	8160135	O-ring	1	
14	8235592	Tube, Drain Single-Station Only with Filter	1	

---

Drain System Components - Drain Valves and Associated Parts (Built-In Filtration)\_2

# BIRE14-MRE14 Series Electric Fryer

## Drain System Components - Drain Valves and Associated Parts (without Built-In Filtration)



---

Drain System Components - Drain Valves and Associated Parts (without Built-In Filtration)

# BIRE14-MRE14 Series Electric Fryers

## Drain System Components - Drain Valves and Associated Parts (without Built-In Filtration)

#	PART #	DESCRIPTION	QTY	Note
1	8101569	Valve, 1.25-inch, Non-filter, Full-vat Drain	1	
2	8067915SP	Valve, 1-inch, Non-filter, Dual-vat, Left Drain	1	
3	8067916SP	Valve, 1-inch, Non-filter, Dual-vat, Right Drain	1	
4	8130188	Drain Nipple, Extended	1	
5	8130276	Drain Extension, 1-inch, Dual-vat	1	

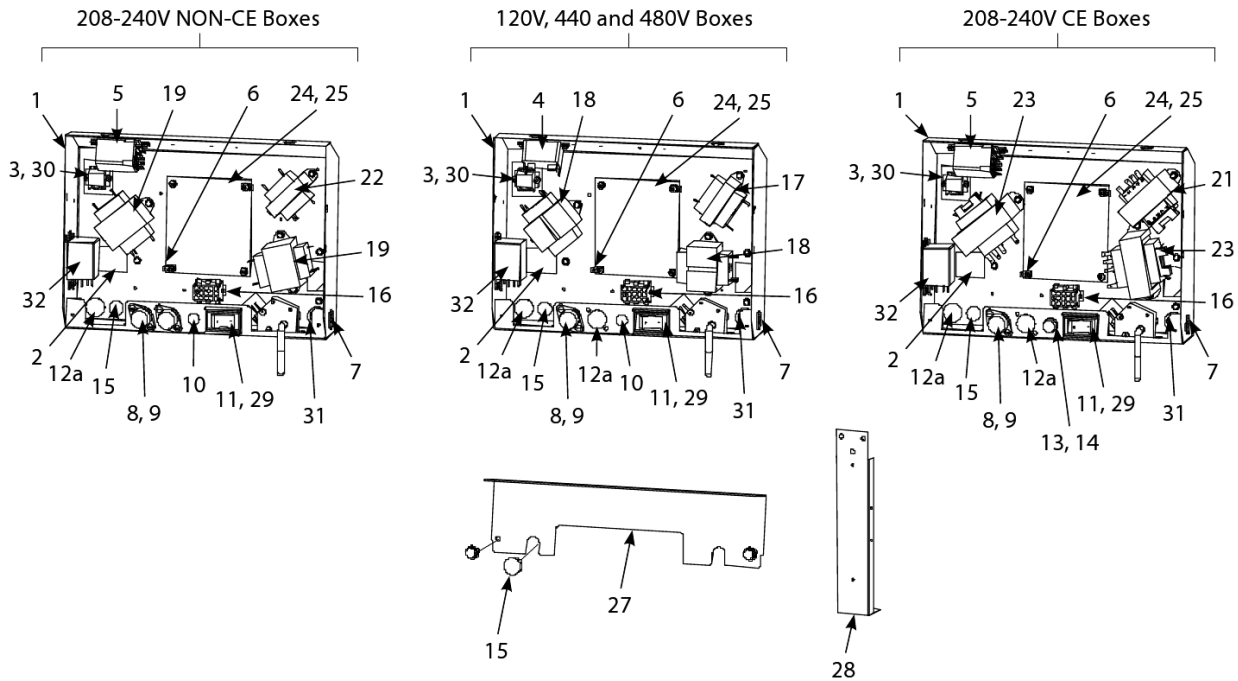
---

Drain System Components - Drain Valves and Associated Parts (without Built-In Filtration)



# BIRE14-MRE14 Series Electric Fryers

## Electronics and Wiring Components - Component Boxes



# BIRE14-MRE14 Series Electric Fryers

## Electronics and Wiring Components - Component Boxes

#	PART #	DESCRIPTION	QTY	Note
1	1065592	Box Assembly, Component	1	
2	2003300	Bracket, Component Box Strain Relief	1	
3	8069495SP	Terminal Block and Wire Assembly	1	
4	8070012	Filter Relay - 18A 24VAC	1	
5	8070670	Relay, 24V DPDT	1	
6	8070037	Terminal, 0.25-inch Push-on	1	
7	8070121	Bushing, Heyco SB-625-500	1	
8	8070922	Holder, Bus Fuse	1	
9	8072278	Fuse, 20 Amp	1	
10	8102446	Plug - 0.5" Heyco Double "D"	1	
11	8074036	Switch	1	
12	8073575	Plug, Carling Switch Hole	1	[1]
12a	8071947	Plug, .875	1	
13	8071321	Holder, Fuse	1	[2]
14	8071597	Fuse - 3amp Slo-Blow	1	
14a	8071174	Fuse, 3 AMP, 250V, Slow-Blow	1	
15	8102445	Plug, Button .625 Heyco Double "D"	1	
16	1065750	Harness, Full Vat Assembly	1	
16a	1065751	Harness Assembly, RE DV Control	1	
17	8070855	Transformer - 120V/50-60 Hz - 12V 20VA	1	
18	8070800	Transformer, 100-120V/24V 50VA Filter and MIB	1	
19	8070680	Transformer, 208V, 50/60Hz -24V 20VA	1	
19a	8074968	Transformer, 208-250V 75VA	1	[3]
20	8074967	Transformer, 100-120V 75VA	1	[4]
21	8072191	Transformer - 208-240V -12V 30VA	1	
22	8070979	Transformer, 208V/240V/12V	1	
23	8072180	Transformer - 208-240V/24V 50A	1	
24	8090349	Spacer, 4mm X 6mm Aluminum	1	
25	8262260	Standard Interface Board	1	[5]
25a	8262261	EPRI, Interface Board	1	[6]
26	8073932	Relay, Heat/Latch 12VDC SPDT 12 Amp Sealed	1	
27	2200565	Guard, Finger Domestic and Non-CE	1	
27a	2201061	Guard, Finger Non-Domestic and CE	1	
28	2006654	Brace, Component Box	1	
29	2300834	Guard, RE Box Switch	1	
30	8160217	Insulation, Terminal Block Paper	1	
31	8100045	Bushing, .875 Dia. Hole 0.6875"	1	
32	8072515	Relay, 120V SPDT 10A	1	[7]
33	8262249	RE Hood/Ansul Interlock Kit	1	[8]
34	8262458	Speaker - 4 Watts	1	
35	8074330	Speaker Adapter Harness SMT	1	[9]

### PART NOTES:

- [1] - used on some models without a switch
- [2] - Some models use Plug, Button .50 Heyco Double "D" here.
- [3] - Used in DVcomponent boxes
- [4] - Used in DV component boxes

---

### Electronics and Wiring Components - Component Boxes

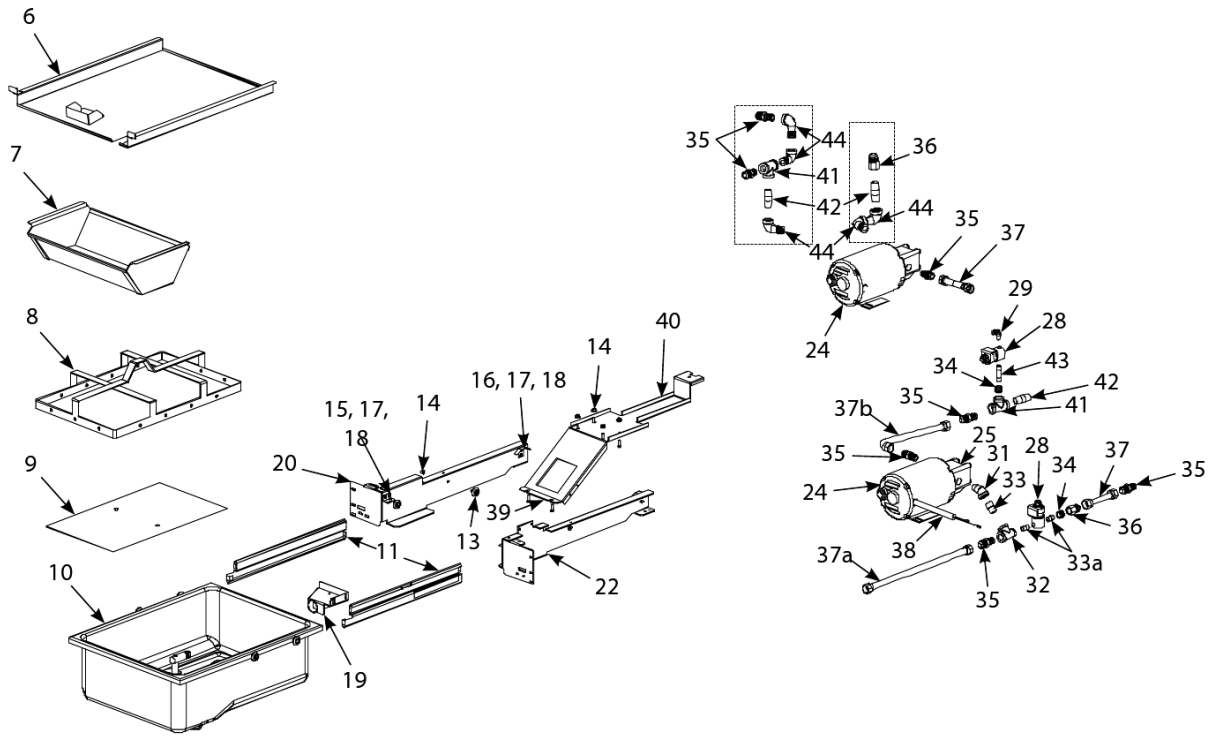
# BIRE14-MRE14 Series Electric Fryers

## Electronics and Wiring Components - Component Boxes

#	PART #	DESCRIPTION	QTY	Note
[5]	-	incl. SMT speaker harness		
[6]	-	includes SMT speaker harness		
[7]	-	used in Canadian models only		
[8]	-	includes terminal block, wires and connectors		
[9]	-	SMT		

# BIRE14-MRE14 Series Electric Fryers

## Filtration System Components



Filtration System Components

FRY\_P\_0029\_2\_15\_Filtration System Components.pdf

# BIRE14-MRE14 Series Electric Fryers

## Filtration System Components

#	PART #	DESCRIPTION	QTY	Note
1	8261979	Filter Pan Roller Kit	1	[1]
2	8261980	Service Filter Pan	1	[2]
2a	8261981	Service Filter Pan Assembly	1	[3]
3	8261392	O-Ring	5	[4]
4	8130568	Plug, 0.125" SS NPT, Sq-Head	2	[4]
5	1065911SP	Heater Strip Assembly, 100-120V 25W 18"	1	
5a	1065912	Heater Strip Assembly - 208-250V/25W - 18"	1	
6	8234637	Lid	1	
6a	1066243	Lid, Single	1	
6b	1066310	Lid, Single-Station Fryer Only Dual Vat Filter Pan	1	
7	8102874	Crumb Tray, Standard Size Filter Pan 3, 4 and 5 Vat	1	
7a	8241707	Crumb Tray	1	
8	8102909	Hold-Down Ring for Pad 11.20 x 19.10	1	
8a	8102910	Hold Down Ring	1	
8b	8104439	Hold Down Ring - Paper	1	
9	8122025	SanaGrid Filter Screen	1	
9a	2201316	Sana Grid Filter Screen	1	
10	1081204SP	Pan, One-Piece Filter	1	[5]
10a	8235594	Pan, Filter	1	
11	8102012	Rail Set, Filter Pan Roller	1	[6]
12	8261979	Filter Pan Roller Kit	1	[7]
13	8102198	Roller, Filter Pan and Rail	1	
14	8261372	Nut Grip 0.25-inch 0.25-20 Hex NP	10	
14a	8090191	Washer, Lock 0.25 Spring ZP	1	[8]
15	8234675	Bracket, Lid Support	1	
16	2003556	Guide, Filter Pan Lid	1	
16a	2006709	Toggle Switch	1	
17	8261363	Screw - #8-32 x 0.5" NP	25	
18	8090247	Nut - #8-32 Keps Hex	1	
19	8233879	Suction Tube	1	
20	2004408	Rail, Left Filter	1	
21	1065981	Support, Assy. Left Filter Pan	1	
22	2004409	Rail, Right Filter	1	
23	1065982	Support, Assy. Right Filter Pan	1	
24	8261785	Motor and Gasket Kit - 100V/50-60 Hz	1	
24a	8261712	Motor and Gasket Kit - 115V/50-60 Hz	1	
24b	8261756	Motor and Gasket Kit - 208V/50-60 Hz	1	
24c	8261270	Motor and Gasket Kit - 220-240V/50-60 Hz	1	
24d	8261755	Motor and Gasket Kit - 250V/50-60 Hz	1	
25	8261264	Pump Kit - 4 GPM	1	
26	8160093	Gasket - Pump/Motor	1	
27	80711973	Pump Seal Kit - Viking	1	
28	8072484	Solenoid Valve - 0.25"	1	
29	8102493	Elbow, 90° 0.125-inch NPT x 0.25-inch Quick Connect	1	
30	8111071	Tube, 0.25-inch OD Teflon Manifold Vent	1	[9]
31	8130342	Elbow, 0.5-inch 45° Street	1	

### Filtration System Components

# BIRE14-MRE14 Series Electric Fryers

## Filtration System Components

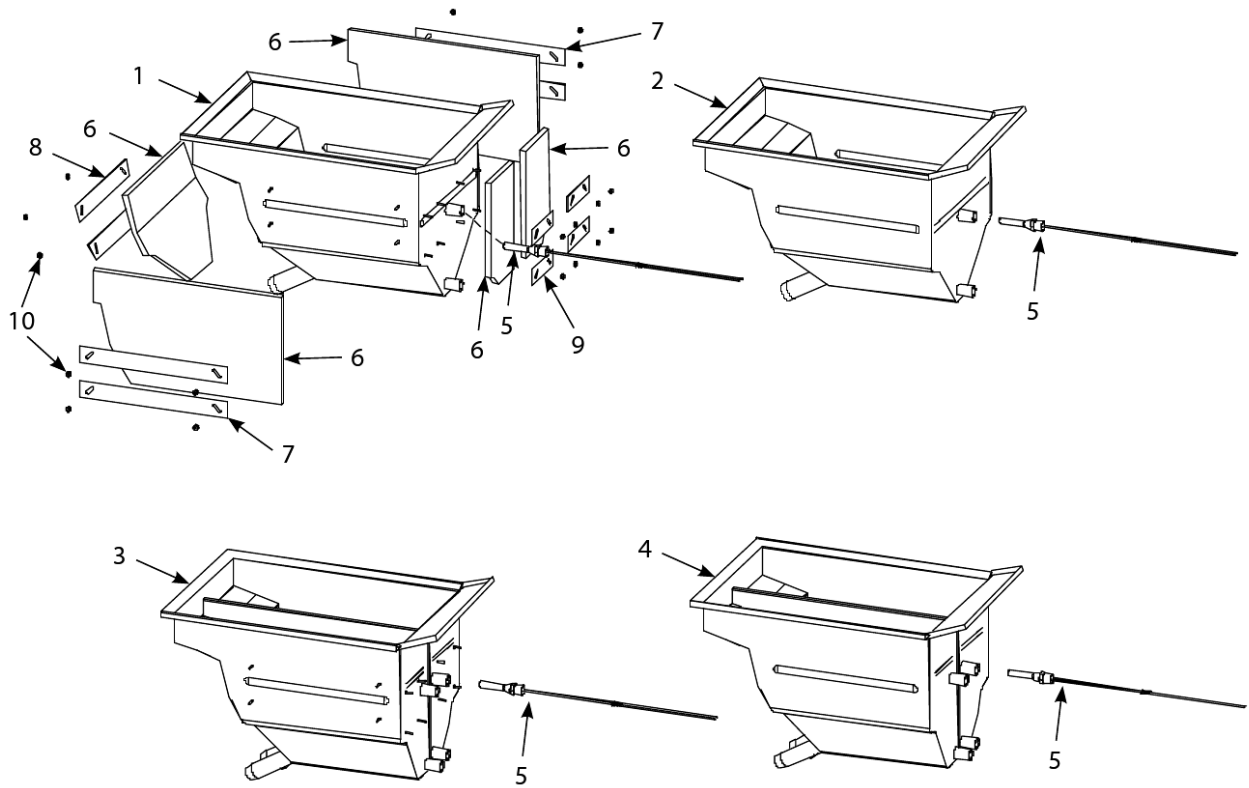
#	PART #	DESCRIPTION	QTY	Note
32	8130530	Tee, Reducing 0.5-inch x 0.25-inch x 0.5-inch	1	
33	8130022	Nipple, 0.5" Close NPT BM	1	
33a	8130838	Nipple - 0.25" NPT	1	
34	8130304	Bushing, 0.5-inch NPT to 0.25-inch NPT Flush Reducing	1	
35	8101668	Male Adaptor - 0.625" OD x 0.5"	1	
36	8101669	Female Adaptor - 0.875" OD x 0.5"	1	
37	8101680	Flexline - 0.625" OD x 6.5" L	1	
37a	8101057	Flexline - Oil Return - 13" L	1	
37b	8101043	Flexline - Oil Return - 9.5" L	1	
38	1065910	Wiring Harness, Filter Pump, 115/120V Filter Harness	1	
38a	1065906SP	Wiring Harness - 208/230/240/250V Filter Pump	1	
39	8261375	Screw - #10-32 x 0.75" - Hex Trim Head SS	5	
40	2005950	Bridge, Filter Motor	1	
40a	8241705	Bridge Filter Motor Single Station Fryer Only	1	
41	8130003-FRY	Tee - 0.5" NPT	1	
42	8130298	Nipple, 0.5" x 2.00" NPT BM Pipe	1	
43	8130537	Nipple - 0.25" x 2"	1	
44	8130165	Elbow - 0.5" x 90° NPT Street	1	

### PART NOTES:

- [1] - includes roller and nuts
- [2] - Item 10, four of roller and nuts, two O-rings and two of Plug, 0.125-inch Socket Head Pipe
- [3] - Service Filter Pan plus Items 8 and 9
- [4] - used with Item 10
- [5] - includes Item 7
- [6] - includes one left and one right
- [7] - includes 4 rollers, 4 nuts and 4 lock washers
- [8] - for lock washers
- [9] - sold by the foot

# BIRE14-MRE14 Series Electric Fryers

## Frypot Assemblies and Associated Parts



Frypot Assemblies and Associated Parts

# BIRE14-MRE14 Series Electric Fryers

## Frypot Assemblies and Associated Parts

#	PART #	DESCRIPTION	QTY	Note
1	8235545SP	Frypot, Full-Vat Filter with Insulation (for use on EPRI units)	1	[1]
2	8235359SP	Frypot	1	[2]
3	8235551SP	Frypot, Dual-Vat Filter with Insulation (for use on EPRI units)	1	[1]
4	8235482SP	Frypot, Dual-Vat Filter w/o Insulation (for use on Standard units)	1	[2]
5a	8261177	Thermostat, High-Limit 425°F/218°C	1	[3]
5b	8262456	Thermostat Assembly - High-Limit - 435°F	1	[4]
5c	8068035SP	High-limit Thermostat	1	[5]
5d	8262455	Thermostat Assembly - High-Limit - 415°F	1	[6]
5e	8068132	High-Limit Thermostat, CE other than 22kW	1	[7]
6	8160773	Insulation - 0.5" x 10" x 20.5"	1	[8]
7	9004100	Retainer, Insulation—Side	1	
8	9004101	Retainer, Insulation—Front	1	
9	9001345	Retainer, Rear Insulation	1	
10	8261376	Nut - #10-32 Keps Hex	10	

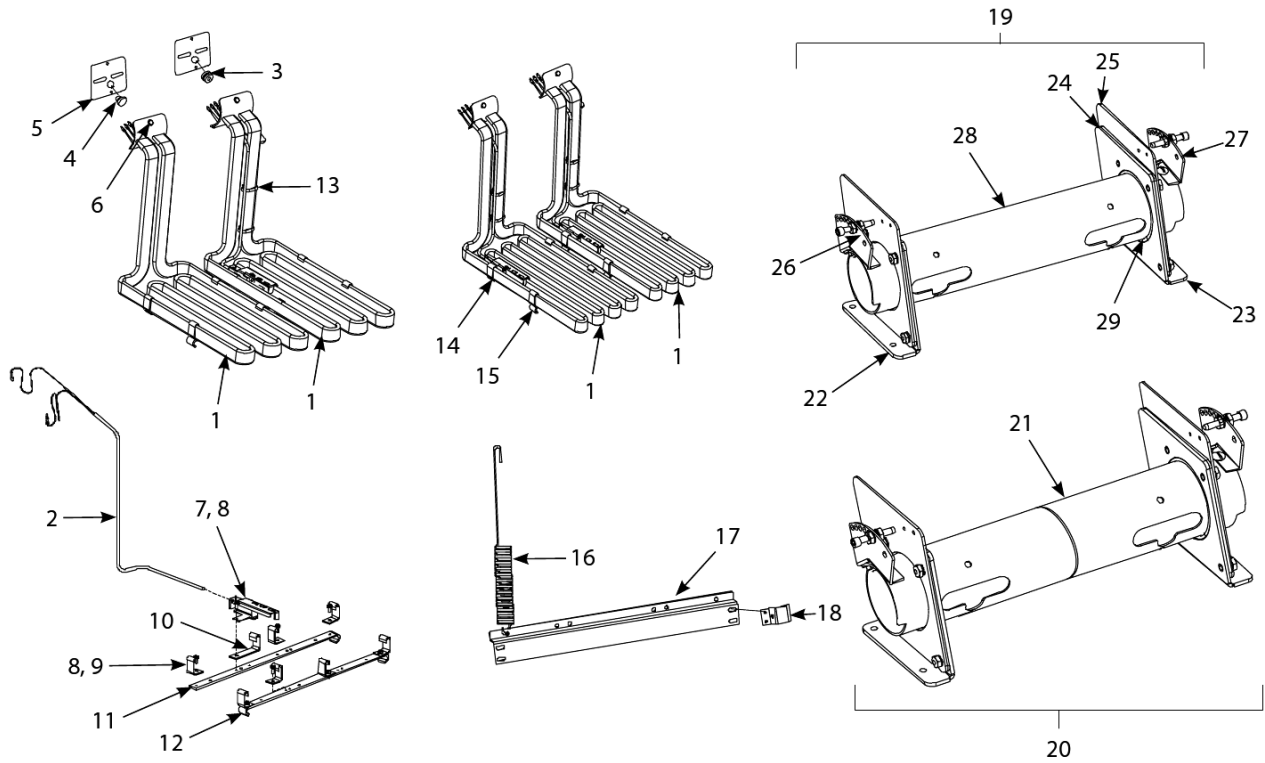
### PART NOTES:

- [1] - for use on EPRI units
- [2] - for use on Standard units
- [3] - 218°C17kW FV and 14kW FV
- [4] - 224°C22kW, 17kW DV and 14 kW DV
- [5] - 224°C22kW, 17kW DV and 14 kW DVColor Coded Red
- [6] - 213°C14kW and 17kW CE
- [7] - Color-Coded Yellow  
213°C14kW and 17kW CEColor-Coded Yellow
- [8] - 4 required per pot



# BIRE14-MRE14 Series Electric Fryers

## Heating Element Assemblies and Associated Parts



Heating Element Assemblies and Associated Parts

# BIRE14-MRE14 Series Electric Fryers

## Heating Element Assemblies and Associated Parts

#	PART #	DESCRIPTION	QTY	Note
1	8262198	Element Kits - 200V - 17.0 kW	1	[1]
1a	8262192	Element Kits - 208V - 17.0 kW	1	[1]
1b	8262200	Element Kits - 220V - 17.0 kW	1	[1]
1c	8262193	Element Kits - 230V - 17.0 kW	1	[1]
1d	8262199	Element Kits - 230V - 18.5 kW	1	[2]
1e	8262194	Element Kits - 240V - 17.0 kW	1	[1]
1f	8262196	Element Kits - 480V - 17.0 kW	1	[1]
2	8262212	Temperature Probe Kit	1	[3]
3	8160681	Grommet, Probe	1	
4	8160480	Plug, .375-inch Dome	1	
5	8160688	Gasket, Element	1	
6	8091003	Screw - #10-32 x 0.375" Hex Trim Head SS	1	
6a	8090766	Nut, 10-32 Keps Hex SS	1	
7	2303714	Bracket, Temperature Probe 7.0 kW	1	
7a	2300784	Bracket - Temperature Probe 8.5/11 kW	1	[4]
8	8090518	Screw, 8-32 x 0.375-inch Hex Washer Slotted Head SS	1	
9	9102042	Clamp, Element	1	[5]
10	2300781	Key Operated Switch Ice With Keys	1	[6]
11	2304902	Support, Full-Vat Element Rear	1	
12	2304101	Support, Full-Vat Element Front	1	
13	8090567	Tie-Wrap - Metal	1	
14	2304903	Support, Dual-Vat Element Rear Dual Vat	1	
15	2304103	Support, Dual-Vat Element Front Dual Vat 14kW	1	
16	8103030	Spring, Element Lift Left	1	
16a	8103031	Spring, Element Lift Right	1	
17	2201190	Bracket, Lower Spring Single Foot Print	1	
17a	2200464	Bracket, Lower Spring	1	
18	2200733	Bracket, Lower Spring Mating	1	
19	1067653SP	Tube Assembly Element, Full-Vat	1	
20	1067654SP	Tube Assembly RE Element, Dual-Vat	1	
21	8103246	Bushing and Tube Assembly, Dual-Vat	1	
22	1080315	Bracket Assembly, LH Element Tube Support	1	
23	1065330	Bracket Assembly, RH Element Tube Support	1	
24	2200122	Plate, Element Tube Support Inner	1	
25	2200123	Plate, Element Tube Support Outer	1	
26	1067651SP	Bracket Assembly, LH Upper Spring	1	
26a	1066569	Bracket Assembly, LH Upper Spring	1	[7]
27	1067652SP	Bracket Assembly, RH Upper Spring	1	
27a	1066570	Bracket Assembly, RH Upper Spring	1	[7]
28	8102992	Tube, Full Vat Element Mounting	1	
29	8102993	Bushing, Tube End Teflon	1	
30	1066587	Magnetic Position Sensor	1	
30a	8262228	Tilt Switch, CE	1	[8]
31	8103007	Magnet - Ring	1	
32	2300794	Bracket, Magnetic Position Sensor Wire	1	

Heating Element Assemblies and Associated Parts

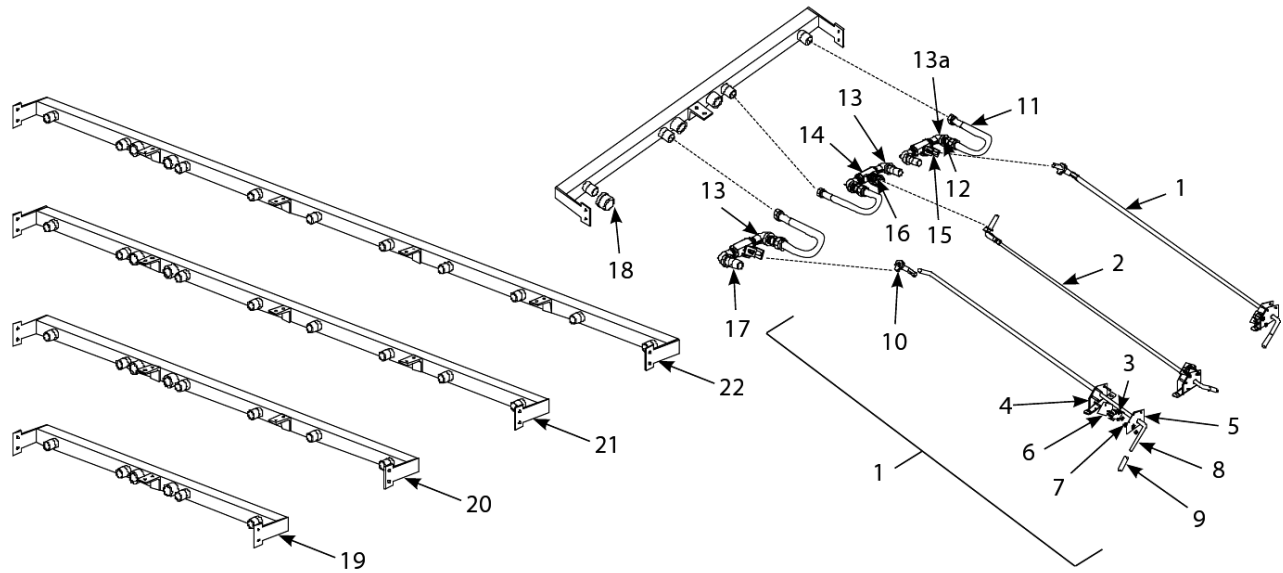
# BIRE14-MRE14 Series Electric Fryers

## Heating Element Assemblies and Associated Parts

#	PART #	DESCRIPTION	QTY	Note
<b>PART NOTES:</b>				
[1]	-	includes gaskets, grommets, tie wraps, screws and nuts		
[2]	-	includes gaskets, grommets, tie wraps, screws and nuts used in some export 3-phase 4-wire WYE units		
[3]	-	includes tie wraps and grommet		
[4]	-	used in some export 3-phase 4-wire WYE units		
[5]	-	Short Short		
[6]	-	Long		
[7]	-	for 17kW		
[8]	-	Full-Vat requires one switch and Dual-Vat requires two		

# BIRE14-MRE14 Series Electric Fryers

## Oil Return System Components



Oil Return System Components

FRY\_P\_0029\_2\_15\_Oil Return System Components.pdf



# BIRE14-MRE14 Series Electric Fryers

## Oil Return System Components

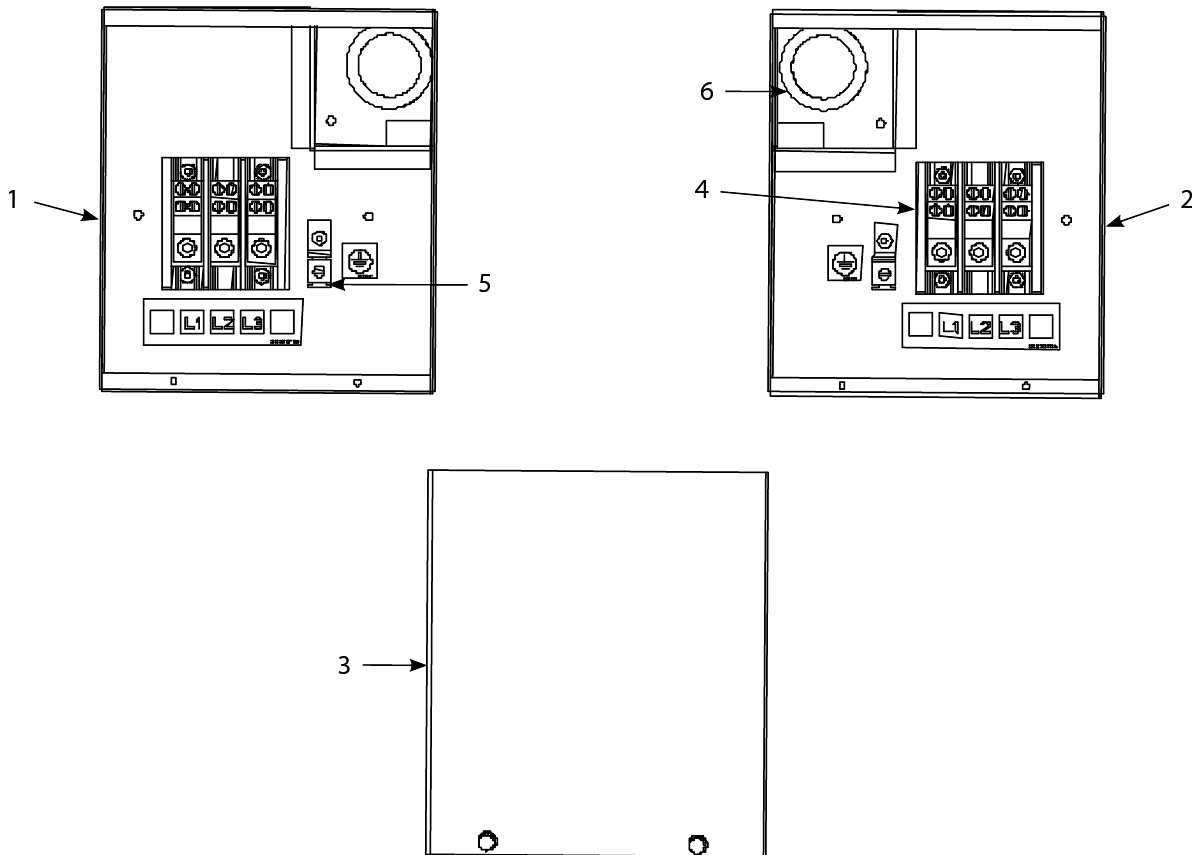
#	PART #	DESCRIPTION	QTY	Note
1	1062465SP	Handle Assembly, Full-Vat and Right Dual-Vat Rear Flush Complete	1	
2	1062687SP	Handle Assembly, Left Dual-Vat Rear Flush Complete	1	
3	8072103	Microswitch	1	
4	1063349	Bracket, Oil Return Microswitch	1	
5	2005401	Bracket, Handle Retainer	1	
6	8160220	Insulation, Microswitch	1	
7	8261366	Nut - #4-40 Keps Hex	25	
8	8102534	Rod, Full-Vat and Right Dual Vat Rear Flush	1	
8a	8102533	Rod, Left Dual Vat Rear Flush	1	
9	8160643	Grip, Oil Return Valve Handle	1	
10	8090601	Clip, Clevis	1	
11	8102532	Flexline - 7" L	1	
11a	8101057	Flexline - Oil Return - 13" L	1	
11b	8101055	Flexline - 0.625" OD x 11.5" L	1	
12	8101668	Male Adaptor - 0.625" OD x 0.5"	1	
13	8130165	Elbow - 0.5" x 90° NPT Street	1	
13a	8130908	Adapter, 0.5" NPT 90°	1	[1]
14	8100278	Valve, 0.5" Ball	1	
15	2005438	Handle, Rear Flush Valve	1	
16	9002935	Retainer, Nut Oil Return Valve	1	
17	8130460	Nipple, 0.5-inch X 3.0-inch NPT	1	
18	8130907	Cap, 0.9375-inch Valve Safety	1	
19	8103015	Manifold, Two-Station Fryer	1	
19a	8102543	Manifold, Two-Station Fryer	1	[2]
20	8103016	Manifold, Three-Station Fryer	1	
20a	8102544	Manifold, Three-Station Fryer	1	[2]
21	8103017	Manifold, Four-Station Fryer	1	
21a	8102545	Manifold, Four-Station Fryer	1	[2]
22	8103018	Manifold, Five-Station Fryer	1	
22a	8102546	Manifold, Five-Station Fryer	1	[2]

### PART NOTES:

- [1] - used only on side next to cabinet
- [2] - for non-filter units

# BIRE14-MRE14 Series Electric Fryers

## Terminal Blocks



Terminal Blocks

FRY\_P\_0029\_2\_15\_Terminal Blocks.pdf

# BIRE14-MRE14 Series Electric Fryers

## Terminal Blocks

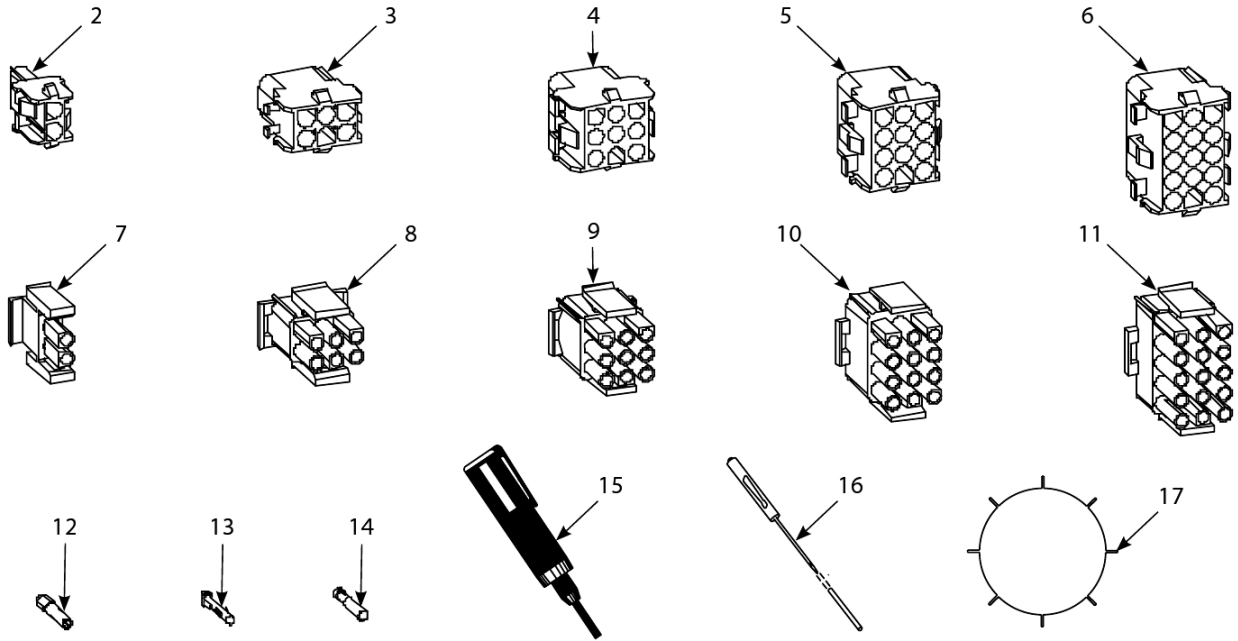
#	PART #	DESCRIPTION	QTY	Note
1	8235631	Box, LH Rear Terminal Block	1	
2	8235632	Box, RH Rear Terminal Block	1	
3	2200801	Cover, Rear Terminal Block Box	1	
4	8073970	Block, Terminal 3 pole 600V 175A	1	
5	8070070	Terminal, Ground Lug	1	
6	8070128	Bushing, Insulating Heyco	1	
7	1065817	Left Hand Terminal Block	1	
8	1065822	Right Hand Terminal Block	1	

---

Terminal Blocks

# BIRE14-MRE14 Series Electric Fryers

## Wiring Connectors, Pin Terminals, Power Cords and Fasteners



Wiring Connectors, Pin Terminals, Power Cords and Fasteners



# BIRE14-MRE14 Series Electric Fryers

## Wiring Connectors, Pin Terminals, Power Cords and Fasteners

#	PART #	DESCRIPTION	QTY	Note
1	8070154	Power Cord - 120V w/Ground Plug	1	
1a	8074317	Cord, Power – Euro 3-Wire 230/240V	1	
1b	8071685	Power Cord - 450V - 18A - 110-inch, 3-wire, 16-gauge	1	
1c	8074316	Power Cords, 120V 5-wire, w/grounded plug BIRE/MRE	1	
1d	8073817	Power Cord - 208-250V/3 Ph - 74A - 96" - 4-wire w/plug 8 awg	1	
2	8071068	2-Pin Female	1	
3	8070158	6-Pin Female	1	
4	8070156	9-Pin Female	1	
5	8070159	12-Pin Female	1	
6	8070875	15-Pin Female	1	
7	8071067	2-Pin Male	1	
8	8070157	6-Pin Male	1	
9	8070155	9-Pin Male	1	
10	8070160	12-Pin Male	1	
11	8070804	15-Pin Male	1	
12	8261341	Terminal, Female Split Pin	25	
13	8261342	Terminal, Male Split Pin	25	
14	8072518	Plug, Mate-N-Lock	1	[1]
15	8070928	Extract Tool Pin Pusher	1	
16	8064855	Pin Pusher Screwdriver Assy	1	
17	2302345	SMT Pin Extractor	1	
17a	8074660PK	SMT Pin Service Repair Kit	1	
18	8090429	Bolt - 0.25"- 20 x 2.00" Hex Head ZP Tap	1	
19	8090514	Cap Screw - 0.3125" 18 NC Hex	1	
20	8090448	Clip, Tinnerman	1	
21	8261366	Nut - #4-40 Keps Hex	1	
21a	8261366	Nut - #4-40 Keps Hex	25	
22	8261358	Nut, 6-32 Keps Hex	1	
23	8090247	Nut - #8-32 Keps Hex	1	
24	8261376	Nut - #10-32 Keps Hex	1	
24b	8090766	Nut, 10-32 Keps Hex SS	1	
25	8090581	Nut, 0.5 NPT Locking	1	
26	8090020	Nut Cap 10-24 NP	1	
27	8261372	Nut Grip 0.25-inch 0.25-20 Hex NP	1	
28	8261368	Nut - 0.25-20 Serrated Flange	1	
29	8090535	Nut, "T" 0.25-inch-20 x 0.4375 SS	1	
30	8090540	Nut, Lock 0.5-inch-13 Hex 2-Way ZP	1	
31	8261359	Screw - #4-40 x 0.75" Slotted Round Head	1	
32	8261365	Screw, 6-32 x 0.375-inch Slot Head	1	
33	8090357	Screw, 6 x 0.375-inch Phillips Head NP	1	
34	8090359	Screw, 8 x 0.25-inch Hex Washer Head	1	
35	8090360	Screw, 8 x 0.375-inch Hex Washer Slot Head	1	
36	8261371	Screw - #8 x 0.5" Hex Head ZP	1	
37	8090364	Screw - #8 x 0.625" Hex Washer Head ZP	1	
38	8090518	Screw, 8-32 x 0.375-inch Hex Washer Slotted Head SS	1	
39	8090104	Screw, 8-32 x 0.5-inch Slotted Head ZP	1	

Wiring Connectors, Pin Terminals, Power Cords and Fasteners

# BIRE14-MRE14 Series Electric Fryers

## Wiring Connectors, Pin Terminals, Power Cords and Fasteners

#	PART #	DESCRIPTION	QTY	Note
39a	8261363	Screw - #8-32 x 0.5" NP	1	
40	8261360	Screw - #10-24 x 0.3125" Round Slot Head ZP	1	
41	8261330	Screw, 10-32 x 0.375-inch Slot Head SS	1	[2]
41a	8091003	Screw - #10-32 x 0.375" Hex Trim Head SS	1	
42	8261375	Screw - #10-32 x 0.75" - Hex Trim Head SS	1	
43	8091000	Screw - #10-32 x 1.25" - Hex	1	
44	8261374	Screw - #10 x 0.5" Hex Head	1	
45	8090266	Screw, 10 x 0.5-inch Phillips Head ZP	1	
46	8090475	Screw - #10-32 x 0.3125" Hex	1	
47	8090123	Screw - #10 x 0.75" - Slot Head	1	
48	8261389	Screw - 0.25"-20 x 0.75" Hex Head ZP	1	
49	8090582	Washer 0.5 NPT Locking	1	
50	8090184	Washer, #10 LK ZP	1	
51	8090190	Washer, .625 X .275 X 40 Flat SS	1	
52	8090191	Washer, Lock 0.25 Spring ZP	1	
53	8090193	Flat Washer - 0.25" Nylon	1	
54	8090194	Flat Washer - 0.3125" ZP	1	

### PART NOTES:

- [1] - Dummy Pin
- [2] - 8.09012e+006