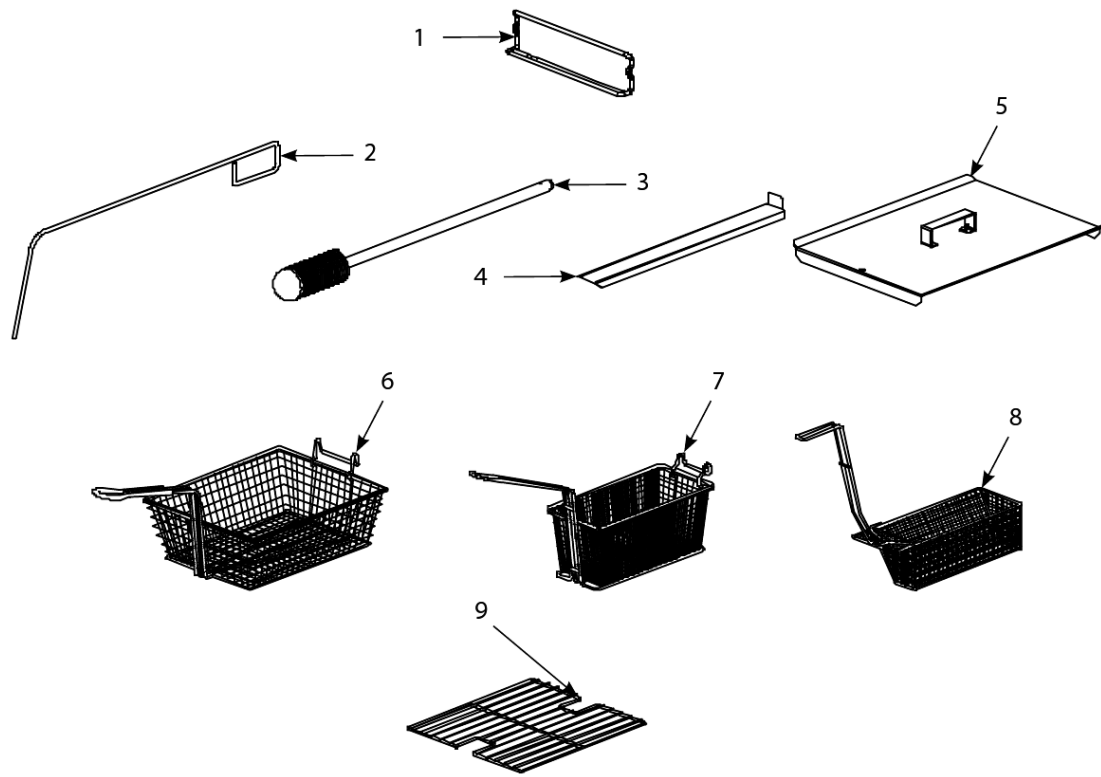


Protector® Series Electric Fryers

Accessories



Protector® Series Electric Fryers

Accessories

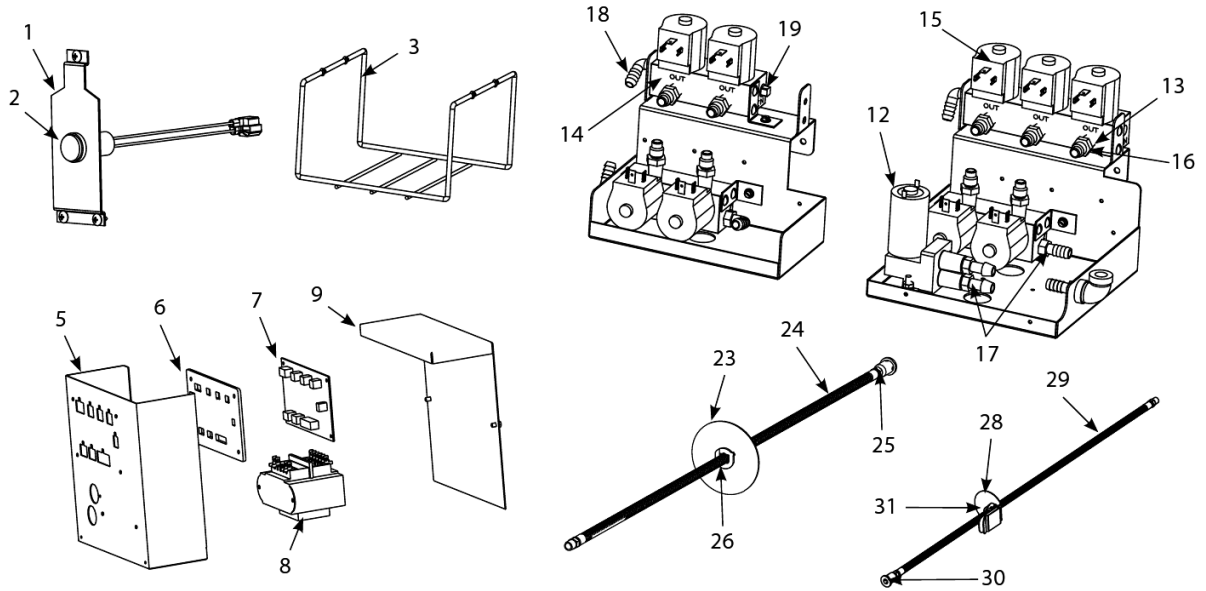
| # | PART # | DESCRIPTION | QTY | Note |
|-----|-------------|------------------------------------|-----|------|
| 1 | 8102793 | Hanger - Wireform Basket | 1 | |
| 1a | 8090921-FRY | Spacer, Basket Hanger | 1 | |
| 2 | 8030197 | Fryer's Friend | 1 | |
| 3 | 8030209 | Brush, Frypot | 1 | |
| 4 | 8235956 | Connecting Strip, Frypot | 1 | |
| 4a | 8236755 | Connecting Strip, Spreader LH Side | 1 | |
| 4b | 8236756 | Connecting Strip, Spreader RH Side | 1 | |
| 5 | 1068325 | Cover, Full-Vat Frypot | 1 | |
| 6 | 8030099 | Basket, Full Size | 1 | |
| 7 | 8030271 | Basket, Twin Size | 1 | [1] |
| 8 | 8030113 | Sediment Tray, Full-vat | 1 | |
| 9 | 8030132 | Rack, Full-Vat Basket Support | 1 | |
| 10 | 8241664 | Spreader Pan | 1 | |
| 11 | 8241720 | Cover, Spreader Pan | 1 | |
| 12 | 8071575 | Heatlamp, Merco 120V 2 Bulb | 1 | |
| 12a | 8065278SP | Heatlamp, Merco 120V | 1 | [2] |
| 13 | 8071576 | Heatlamp, Merco 240V 2 Bulb | 1 | |
| 13a | 8065285SP | Heatlamp, Merco 240V | 1 | [2] |
| 14 | 8030002 | Powder, Filter | 1 | [3] |
| 15 | 8030170 | Filter Paper, 16.5" x 25.75" | 1 | |

PART NOTES:

- [1] - Twin
- [2] - for Lamp Assembly
- [3] - 80- 1-Cup Applications

Protector® Series Electric Fryers

Auto Top Off and JIB Components



Protector® Series Electric Fryers

Auto Top Off and JIB Components

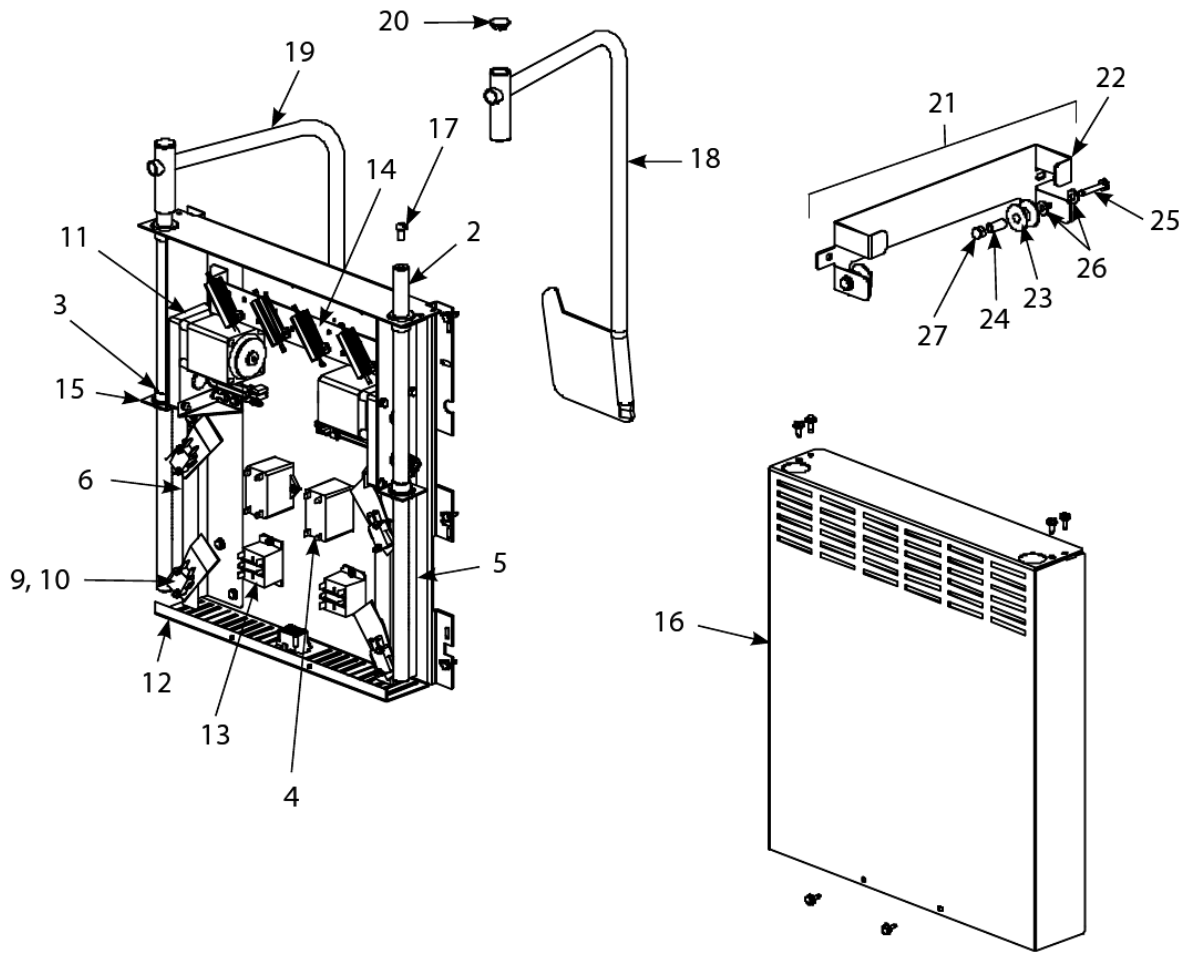
| # | PART # | DESCRIPTION | QTY | Note |
|-----|-----------|--|-----|------|
| 1 | 2304142 | Bracket, Protector® Light | 1 | |
| 2 | 1068105SP | Light, Yellow 24VDC LED Flush | 1 | |
| 3 | 2208363 | Cradle, JIB | 1 | |
| 4 | 1069033 | Protector® Panel Light Assembly | 1 | |
| 5 | 1069258 | Box, Assembly Auto Top Off Board | 1 | |
| 5a | 1068913 | Box, Assembly Auto Top Off Board (for 2-Vat) | 1 | |
| 6 | 8160747 | Seal, Top Off Board | 1 | |
| 7 | 1069611 | PCB Board, Automatic Top Off 2 | 1 | |
| 8 | 8075129 | Transformer - Dual Voltage 208-240V | 1 | |
| 8a | 8074978 | Transformer - Dual Voltage 100-120V/12V 30VA /24V 50VA | 1 | |
| 9 | 2204352 | Cover, Top Off Board 3, 4 or 5-Vat | 1 | |
| 9a | 2203987 | Cover, Top Off Board 2-Vat | 1 | |
| 10 | 8073575 | Plug, Carling Switch Hole | 1 | |
| 11 | 1069615 | Automatic Top-Off Board Assembly, 120V Assy | 1 | |
| 11a | 1069616 | Automatic Top-Off Board Assembly, 208-240V Assy | 1 | |
| 12 | 1069680SP | Pump, 0.25 FNPT 12VDC, 19PSI 15.1GPH | 1 | |
| 13 | 8074412 | Solenoid Manifold Top-Off (includes three solenoid assemblies) | 1 | |
| 14 | 8074587 | Solenoid Manifold Top-Off (includes two solenoid assemblies) | 1 | |
| 15 | 8074590 | Solenoid | 1 | |
| 16 | 8103270 | Fitting, 0.375" Flare x 0.25 " NPT | 1 | |
| 17 | 8160708 | Fitting, 0.25" NPT Male Barb | 1 | |
| 18 | 8160710 | Fitting, 0.25 NPT x 0.5 Barb 90° | 1 | |
| 19 | 8130640 | Plug, 0.25" Square Head | 1 | |
| 20 | 8111139 | Hose, Silicone Braided | 1 | |
| 21 | 8103266 | Flexline - 0.5" OD x 19.5" L | 1 | [1] |
| 21a | 8103265 | Flexline - 0.5" OD x 24" L | 1 | [1] |
| 21b | 8103263 | Flexline - 0.5" OD x 36" L | 1 | [1] |
| 21c | 8103264 | Flexline - 0.5" OD x 42" L | 1 | [1] |
| 22 | 1068512 | Cap, JIB Assembly | 1 | |
| 23 | 2303737 | Cap, JIB | 1 | |
| 24 | 8103242 | Hose | 1 | |
| 25 | 8103300 | Inlet, Oil Reservoir Tube | 1 | |
| 26 | 8103334 | Bushing, Heyco | 1 | |
| 27 | 1069495 | Cap, BIB Assembly | 1 | |
| 28 | 8236812 | Cap, JIB | 1 | |
| 29 | 8103242 | Hose | 1 | |
| 30 | 8103300 | Inlet, Oil Reservoir Tube | 1 | |
| 31 | 8103334 | Bushing, Heyco | 1 | |

PART NOTES:

[1] - used between solenoid and top off port

Protector® Series Electric Fryers

Basket Lift Assembly and Associated Parts



Protector® Series Electric Fryers

Basket Lift Assembly and Associated Parts

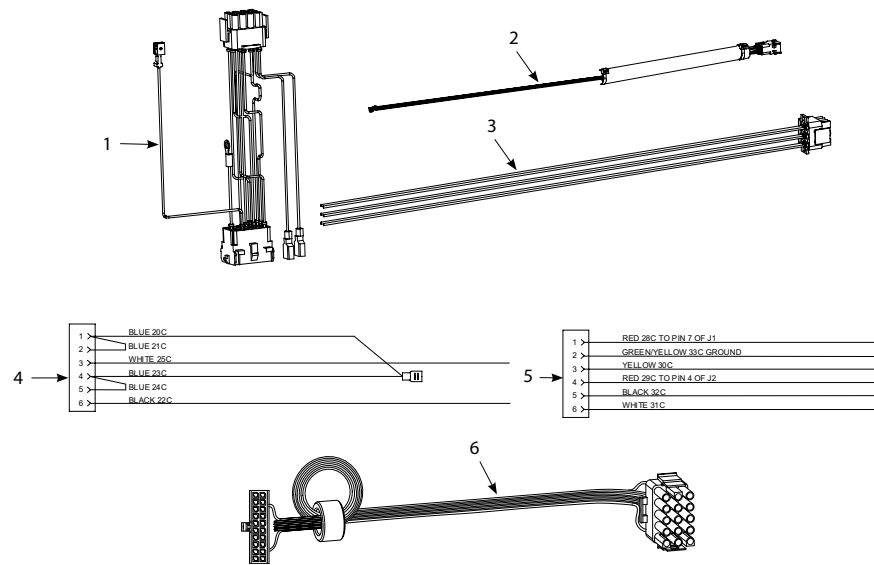
| # | PART # | DESCRIPTION | QTY | Note |
|-----|-----------|---|-----|------|
| 1 | 1061805SP | Basket Lift Assy, 200-220VAC w/Relay | 1 | [1] |
| 2 | 8101012 | Rod, Basket Lift | 1 | |
| 3 | 8130035 | Bushing , Oiltite .640 I.D. | 1 | |
| 4 | 8072513 | Capacitor - 12.5 MFD/330VAC | 1 | |
| 5 | 9018499 | Chassis, Left Basket Lift | 1 | |
| 6 | 9028499 | Chassis, Right Basket Lift | 1 | |
| 7 | 8070159 | 12-Pin Female | 1 | |
| 8 | 9005529 | Gusset, Basket Lift Motor | 1 | |
| 9 | 8120442 | Insulation, Microswitch | 1 | |
| 10 | 8072572 | Microswitch | 1 | |
| 11 | 8065964SP | Motor Assembly - 208-240V | 1 | |
| 12 | 2002942 | Mount, Modular Basket Lift | 1 | |
| 13 | 8071683 | Relay, 12VDC Secondary Blower Fan to cool frypot | 1 | |
| 14 | 1062770SP | Resistor Assy, 208-220VAC Modular Basket Lift | 1 | |
| 15 | 8090082 | Ring, Bushing Retainer | 1 | |
| 16 | 9104776 | Cover, Modular Basket Lift Rear S/S | 1 | |
| 16a | 9004776 | Cover, Modular Basket Lift Rear S/S | 1 | |
| 17 | 8090127 | Screw, 0.25-20 X 0.5-inch Slotted Round Head | 1 | |
| 18 | 8237052 | Weldment, Vent 2-battery, 5 battery and 6-battery | 1 | |
| 19 | 8237053 | Weldment, Vent 3-battery and 5-battery | 1 | |
| 20 | 8100179 | Button, Plug | 1 | |
| 21 | 8069110SP | Roller Assembly, Basket Lift | 1 | |
| 22 | 9108112 | Bracket, Basket Lift Roller | 1 | |
| 23 | 8100194 | Roller, Basket Lift | 1 | |
| 24 | 8100374 | Spacer, Basket Lift Roller | 1 | |
| 25 | 8090508 | Bolt - 0.25-20 x 1.25" | 1 | |
| 26 | 8090190 | Washer, .625 X .275 X 40 Flat SS | 1 | |
| 27 | 8090047 | Nut, Cap- 0.25-20 High Profile S/S | 1 | |
| 28 | WIR0166SP | Wire Bundle, 200-250VAC Basket Lift w/Relay | 1 | |
| 29 | 1065957SP | Basket Lift Harness | 1 | [2] |

PART NOTES:

- [1] - Items 2-21
- [2] - Plugs into Item 7

Protector® Series Electric Fryers

Component Box and Wiring



Protector® Series Electric Fryers

Component Box and Wiring

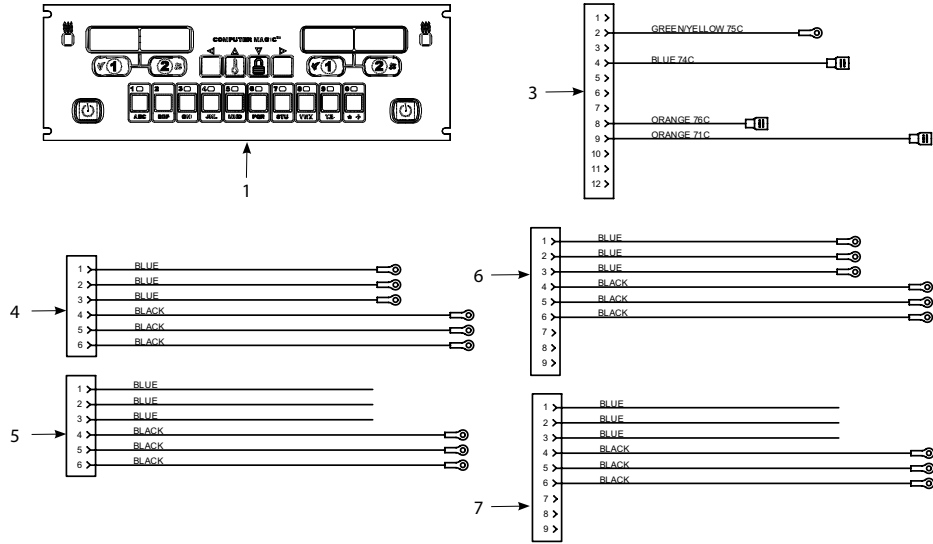
| # | PART # | DESCRIPTION | QTY | Note |
|----|-----------|--|-----|------|
| 1 | 1065750SP | Full Vat Control Harness J4 to J2 | 1 | |
| 1a | 1066639SP | Harness Assembly, FV Control | 1 | |
| 2 | 1065935SP | Component Box to Filter Pump Harness | 1 | |
| 3 | 1065957SP | Basket Lift Harness | 1 | |
| 3a | 1066640 | Harness Assembly, Basket Lift | 1 | |
| 4 | 1065935SP | Component Box to Filter Pump Harness | 1 | |
| 5 | 1065957SP | Basket Lift Harness | 1 | |
| 6 | 8074199 | Cable, 20-pin Controller to 15-pin Interface Board – SMT for fryer's with CM 3.5 controller. | 1 | |
| 7 | 8074546 | Controller Communication | 1 | [1] |
| 8 | 8074655 | Harness RTD Medium | 1 | [2] |
| 9 | 8074654 | ATO RTD Probe | 1 | |
| 10 | 8074621 | FV/DV Harness RTD Short | 1 | [2] |
| 11 | 8074553 | ATO Power | 1 | [3] |
| 12 | 8074671 | ATO Pump/JIB Reset/Bulk Fresh Oil Solenoid Harness | 1 | [4] |
| 13 | 8074555 | ATO Yellow LED | 1 | [5] |
| 14 | 8074573 | Controller Locator Wire | 1 | [6] |
| 15 | 8074552 | Communications Terminator | 1 | [7] |
| 16 | 8074657 | Jumper | 1 | [8] |
| 17 | 1069256SP | Long Top-off Power | 1 | [9] |
| 18 | 8074646 | Controller Communication | 1 | |
| 19 | 8074660PK | SMT Pin Service Repair Kit | 1 | |
| 20 | 2302345 | SMT Pin Extractor | 1 | |

PART NOTES:

- [1] - used from Computer to Computer
- [2] - used from RTD to ATO Board
- [3] - used from Transformer to ATO Board
- [4] - used from ATO Board to Top-off Pump and JIB Reset Switch
- [5] - used from ATO Board to Yellow LED
- [6] - used from Computer to Interface Board
- [7] - used on Computer pin J6 and ATO board pin J10 to terminate network
- [8] - used on 4 and 5 battery ATO board plug J5 pin 7 and 8
- [9] - used between Component Box to ATO Box

Protector® Series Electric Fryers

Computers and Wiring



Protector® Series Electric Fryers

Computers and Wiring

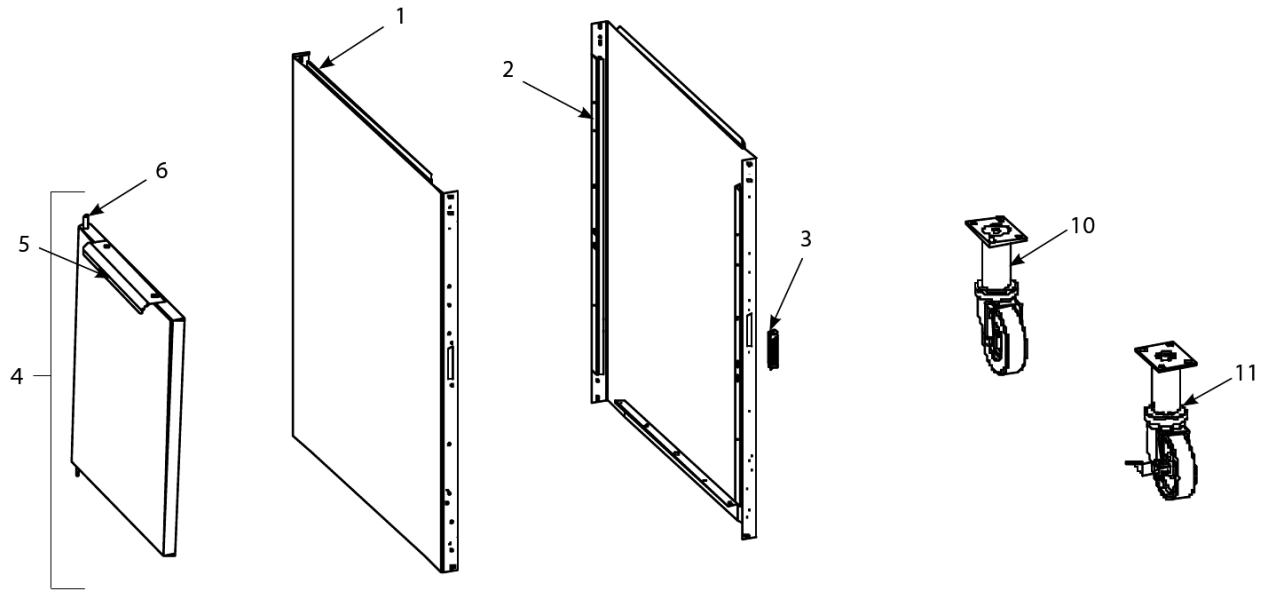
| # | PART # | DESCRIPTION | QTY | Note |
|----|-----------|---|-----|------|
| 1 | 1068898 | Replacement CM7 Computer, Non-CE CM7 | 1 | [1] |
| 1a | 1068900 | Replacement CM7 Computer, Non-CE CM7 EPRI | 1 | [2] |
| 1b | 1068902 | Replacement CM7 Computer, CE CM7 | 1 | [3] |
| 1c | 1068904 | Replacement CM7 Computer, CE CM7 EPRI | 1 | [4] |
| 2 | 8103141 | Sound Device, Universal SMT | 1 | |
| 3 | 1066031SP | Contactora Box Wiring Assemblies – 12-Pin Full-Vat C-1, Contactora Box Harness Assembly Full Vat Standard EPRI | 1 | [5] |
| 4 | 1066768SP | Contactora Box Wiring Assembly – 6-Pin (Left Element), 14/17 kW Standard Mercury Contactora | 1 | |
| 4a | 1067849SP | Contactora Box Wiring Assembly – 6-Pin (Left Element), 22 kW Triac SSR | 1 | |
| 5 | 1066771SP | Contactora Box Wiring Assembly – 6-Pin (Left Element),14/17 kW Mechanical Contactora | 1 | |
| 5a | 1067851SP | Contactora Box Wiring Assembly – 6-Pin (Left Element), 22 kW Mercury and High Amp Mechanical Contactora | 1 | |
| 6 | 1066769SP | Contactora Box Wiring Assembly – 9-Pin (Right Element), 14/17 kW Standard Mercury Contactora | 1 | |
| 6a | 1067850SP | Contactora Box Wiring Assembly – 9-Pin (Right Element), 22 kW Triac SSR | 1 | |
| 7 | 1066772SP | Contactora Box Wiring Assembly – 9-Pin (Right Element),14/17 kW Mechanical Contactora | 1 | |
| 7a | 1067852SP | Contactora Box Wiring Assembly – 9-Pin (Right Element), 22 kW Mercury and High Amp Mechanical Contactora | 1 | |

PART NOTES:

- [1] - For use in US, Canada, Mexico and all other non-CE countriesreplaces 1080227
- [2] - For use in US, Canada, Mexico and all non-CE countriesreplaces 1080229
- [3] - For use in European CE countriesreplaces 1080223
- [4] - For use in European CE countriesreplaces 1080225
- [5] - uses harness above plus wire kits WIR0733 and WIR0736See wiring diagrams on pages 1-33 and 1-34

Protector® Series Electric Fryers

Doors, Sides and Casters



Protector® Series Electric Fryers

Doors, Sides and Casters

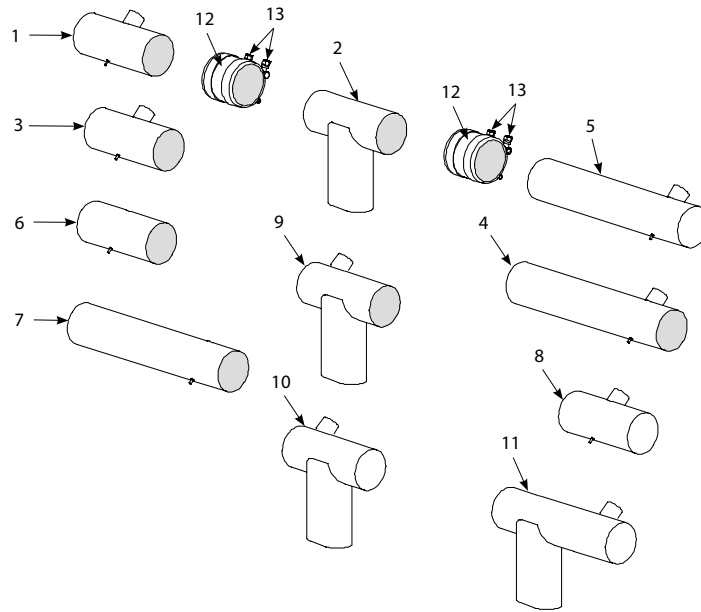
| # | PART # | DESCRIPTION | QTY | Note |
|----|-----------|--|-----|------|
| 1 | 2310323SP | Side, Standard Cabinet Left SS | 1 | |
| 1a | 2210323SP | Side, Standard Cabinet Left SS - Enameled Steel | 1 | |
| 2 | 2320323SP | Side, Standard Cabinet Right SS | 1 | |
| 2a | 2220323SP | Side, Standard Cabinet Right SS (for Enameled Steel) | 1 | |
| 3 | 8101105 | Door Magnet - Vertical | 1 | |
| 3a | 8102346 | Door Magnet - Horizontal | 1 | [1] |
| 4 | 1064397 | Door - Left/Right | 1 | [2] |
| 5 | 2109739 | Handle, Eurolook Door | 1 | |
| 6 | 1064067SP | Door Pin Assembly | 1 | |
| 7 | 8261343 | Spring - Door Pin Hinge | 1 | |
| 8 | 8090970 | Retaining Ring | 1 | |
| 9 | 2307192 | Hinge, Door Lower | 1 | |
| 10 | 8101494 | Caster, 8.5-inch Swivel w/o Brake | 1 | |
| 11 | 8102970 | Caster with Brake | 1 | |

PART NOTES:

- [1] - over filter pan
- [2] - Left shown – move handle to bottom for right

Protector® Series Electric Fryers

Drain System Components - Drain Tube Sections and Associated Parts



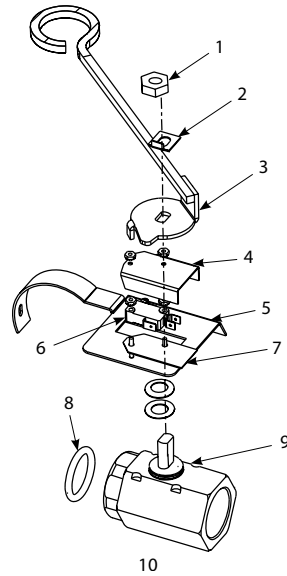
Protector® Series Electric Fryers

Drain System Components - Drain Tube Sections and Associated Parts

| # | PART # | DESCRIPTION | QTY | Note |
|----|---------|---|-----|------|
| 1 | 8234625 | Drain Tube, Short Full-Vat Left Open/Right End Closed | 1 | |
| 2 | 8236663 | Drain Tube, Dump | 1 | |
| 3 | 8234643 | Drain Tube, Full-Vat, Short, Open Both Ends | 1 | |
| 4 | 8234641 | Drain Tube, Long Full-Vat Open Both Ends | 1 | |
| 5 | 8234639 | Drain Tube, Long Full-Vat Left Open/Right End Closed | 1 | |
| 6 | 2205395 | Drain Tube, Full-Vat, Short, Spreader, Open Both Ends | 1 | |
| 7 | 2205396 | Drain Tube, Full-Vat, Long, Spreader, Open Both Ends | 1 | |
| 8 | 8237093 | Drain Tube, Full-Vat Two Battery Right Left Open/Right End Closed | 1 | |
| 9 | 8237094 | Drain Tube, Dump Two Battery Left Closed, Right Open | 1 | |
| 10 | 8237103 | Drain Tube, Dump Two Battery w/ Spreader, Left, Both Ends Closed | 1 | |
| 11 | 8237104 | Drain Tube, Dump Two Battery w/ Spreader, Right, Both Ends Closed | 1 | |
| 12 | 8160772 | Sleeve | 1 | |
| 13 | 8090969 | Clamp 3" | 1 | |
| 14 | 8160630 | Cap, Vinyl Black | 1 | |

Protector® Series Electric Fryers

Drain System Components - Drain Valves and Associated Parts



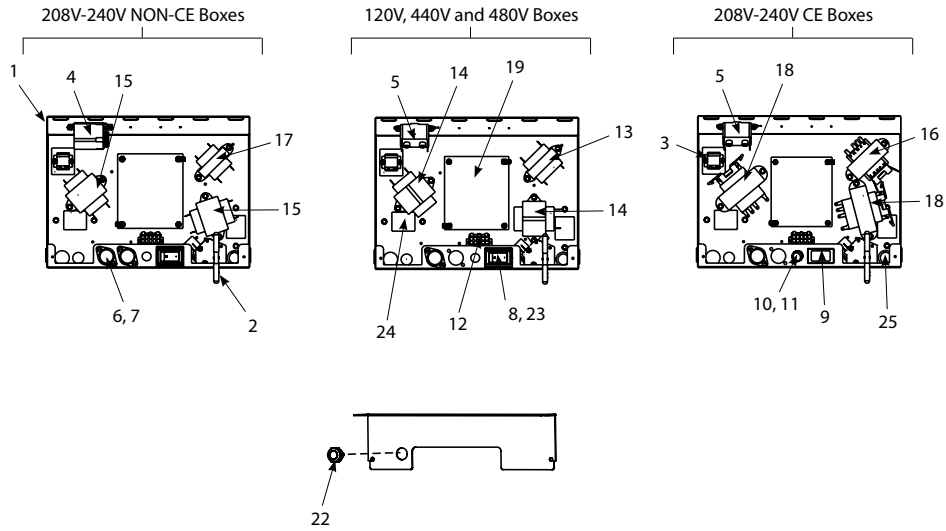
Protector® Series Electric Fryers

Drain System Components - Drain Valves and Associated Parts

| # | PART # | DESCRIPTION | QTY | Note |
|----|---------|--|-----|------|
| 1 | 8090540 | Nut, Lock 0.5-inch-13 Hex 2-Way ZP | 1 | |
| 2 | 9002936 | Retainer Nut (FV) | 1 | |
| 3 | 8236634 | Handle, Drain Valve FV | 1 | |
| 4 | 9012348 | Cover, Dual-Vat Left Drain Safety Switch | 1 | |
| 5 | 1069031 | Bracket, Elec. Protector FV | 1 | |
| 6 | 8072104 | Microswitch | 1 | |
| 7 | 8160220 | Insulation, Microswitch | 1 | |
| 8 | 8160135 | O-ring | 1 | |
| 9 | 8101018 | Drain Valve, 1.25", Left | 1 | |
| 10 | 1069640 | Full Vat Drain Valve Assembly | 1 | |

Protector® Series Electric Fryers

Electronics and Wiring Components - Component Boxes



Protector® Series Electric Fryers

Electronics and Wiring Components - Component Boxes

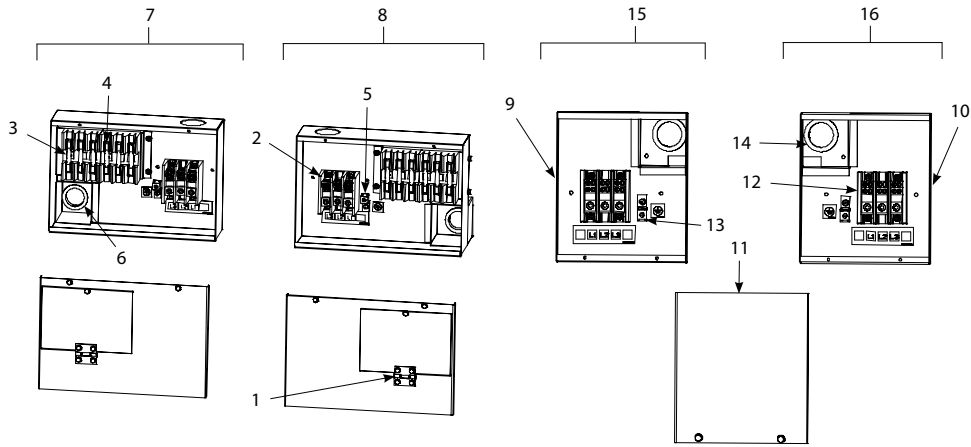
| # | PART # | DESCRIPTION | QTY | Note |
|-----|-----------|---|-----|------|
| 1 | 1065592 | Box Assembly, Component | 1 | |
| 2 | 1066094 | Handle, Assembly Oil Return | 1 | |
| 3 | 8069495SP | Terminal Block and Wire Assembly | 1 | |
| 4 | 8070670 | Relay, 24V DPDT | 1 | |
| 5 | 8070012 | Filter Relay - 18A 24VAC | 1 | |
| 6 | 8070922 | Holder, Bus Fuse | 1 | |
| 7 | 8072278 | Fuse, 20 Amp | 1 | |
| 8 | 8074036 | Switch | 1 | |
| 9 | 8073575 | Plug, Carling Switch Hole | 1 | [1] |
| 10 | 8071321 | Holder, Fuse | 1 | |
| 11 | 8071597 | Fuse - 3amp Slo-Blow | 1 | |
| 12 | 1066639SP | Harness Assembly, FV Control | 1 | |
| 12a | 1066640 | Harness Assembly, Basket Lift | 1 | |
| 13 | 8070855 | Transformer - 120V/50-60 Hz - 12V 20VA | 1 | |
| 14 | 8070800 | Transformer, 100-120V/24V 50VA Filter and MIB | 1 | |
| 15 | 8070680 | Transformer, 208V, 50/60Hz -24V 20VA | 1 | |
| 16 | 8072191 | Transformer - 208-240V -12V 30VA | 1 | |
| 17 | 8070979 | Transformer, 208V/240V/12V | 1 | |
| 18 | 8072180 | Transformer - 208-240V/24V 50A | 1 | |
| 19 | 8262260 | Standard Interface Board | 1 | [2] |
| 19a | 8262261 | EPRI, Interface Board | 1 | [2] |
| 19b | 1066501 | Interface Borad, Fallback Controller Assembly | 1 | |
| 20 | 8090349 | Spacer, 4mm X 6mm Aluminum | 1 | |
| 21 | 8103141 | Sound Device, Universal SMT | 1 | |
| 22 | 8074678 | Switch, Momentary | 1 | |
| 23 | 2300834 | Guard, RE Box Switch | 1 | |
| 24 | 8160217 | Insulation, Terminal Block Paper | 1 | |
| 25 | 8100045 | Bushing, .875 Dia. Hole 0.6875" | 1 | |
| 26 | 8262249 | RE Hood/Ansul Interlock Kit | 1 | [3] |

PART NOTES:

- [1] - used on some models without a switch
- [2] - includes sound harness
- [3] - includes terminal block, wires and connectors

Protector® Series Electric Fryers

Electronics and Wiring Components - Fuse Boxes and Terminal Blocks



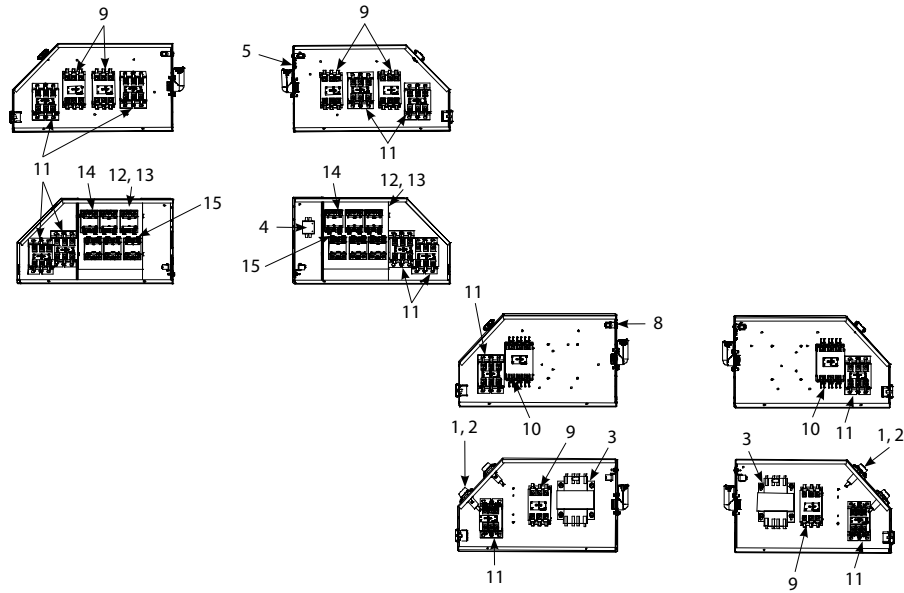
Protector® Series Electric Fryers

Electronics and Wiring Components - Fuse Boxes and Terminal Blocks

| # | PART # | DESCRIPTION | QTY | Note |
|----|---------|---|-----|------|
| 1 | 8100519 | Hinge | 1 | |
| 2 | 8073970 | Block, Terminal 3 pole 600V 175A | 1 | |
| 3 | 8070501 | Fuseholder block | 1 | |
| 4 | 8072240 | Fuse, 60 AMP 300VAC | 1 | |
| 5 | 8070070 | Terminal, Ground Lug | 1 | |
| 6 | 8070128 | Bushing, Insulating Heyco | 1 | |
| 7 | 1065505 | Left 22kW and Single Phase Fuse Box Assembly | 1 | |
| 7a | 1066678 | Left 22kW and Single Phase Fuse Box Assembly | 1 | |
| 8 | 1065506 | Right 22kW and Single Phase Fuse Box Assembly | 1 | |
| 8a | 1066679 | Right 22kW and Single Phase Fuse Box Assembly | 1 | |
| 9 | 8235631 | Box, LH Rear Terminal Block | 1 | |
| 10 | 8235632 | Box, RH Rear Terminal Block | 1 | |
| 11 | 2200801 | Cover, Rear Terminal Block Box | 1 | |
| 12 | 8073970 | Block, Terminal 3 pole 600V 175A | 1 | |
| 13 | 8070070 | Terminal, Ground Lug | 1 | |
| 14 | 8070128 | Bushing, Insulating Heyco | 1 | |
| 15 | 1065817 | Left Hand Terminal Block | 1 | |
| 16 | 1065822 | Right Hand Terminal Block | 1 | |

Protector® Series Electric Fryers

Electronics and Wiring Components- Contactor Boxes



Protector® Series Electric Fryers

Electronics and Wiring Components- Contactor Boxes

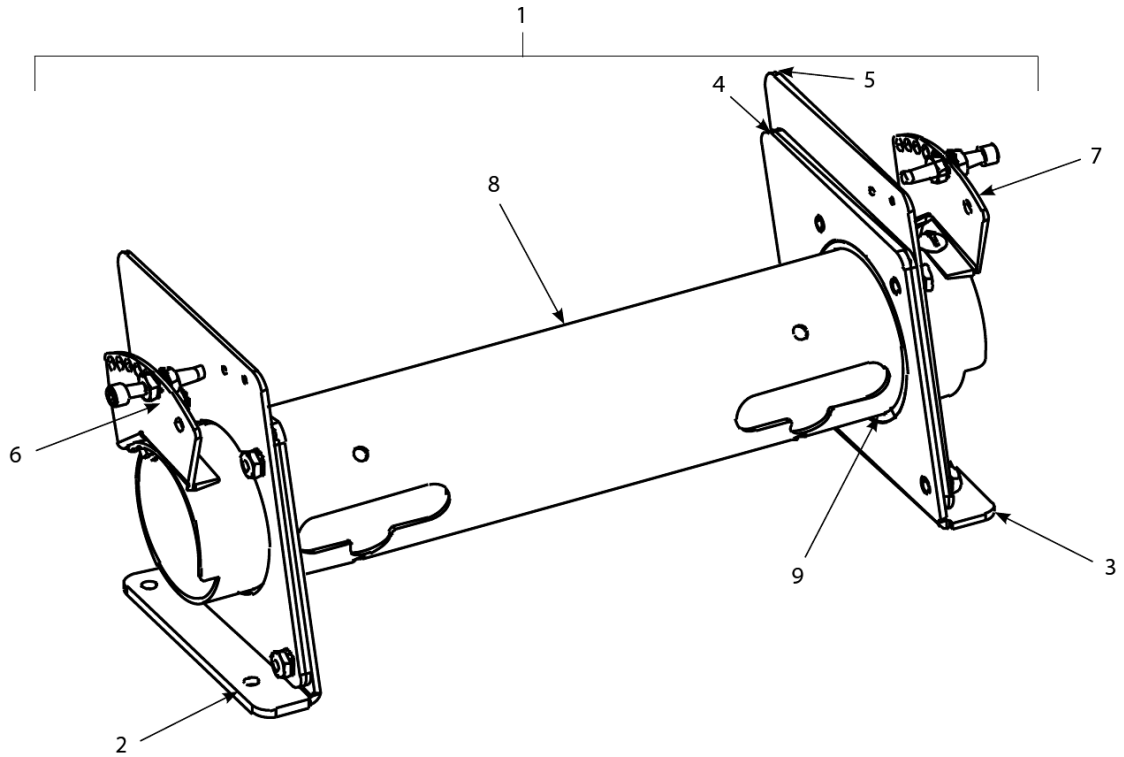
| # | PART # | DESCRIPTION | QTY | Note |
|-----|-----------|--|-----|------|
| 1 | 8072278 | Fuse, 20 Amp | 1 | |
| 2 | 8070922 | Holder, Bus Fuse | 1 | |
| 3 | 8070064 | Transformer, 480V/120V 150 VA | 1 | |
| 4 | 1066204SP | Filter Assembly, EPRI | 1 | [1] |
| 5 | 8102554 | Plug, Cord Cutout 1.125 Button | 1 | |
| 6 | 8071947 | Plug, .875 | 1 | |
| 7 | 8070064 | Transformer, 480V/120V 150 VA | 1 | |
| 8 | 8070070 | Terminal, Ground Lug | 1 | |
| 9 | 8072284 | Contactor, 24V 50 Amp Mechanical | 1 | [2] |
| 10 | 8072283 | Contactor, 24V 63 Amp Mechanical | 1 | [3] |
| 11 | 8101202 | Contactor, 24V 40 Amp Mechanical | 1 | [4] |
| 12 | 8068673 | Heat Sink Assembly, Full-vat Solid State Relay | 1 | [5] |
| 13 | 8261562 | Relay with Heat Sink - 280V/40A | 1 | |
| 14 | 8072749 | Heat Sink - Solid State | 1 | |
| 15 | 8070037 | Terminal, 0.25-inch Push-on | 1 | |
| 16 | 2210482 | Cover, Left Contactor Box | 1 | |
| 16a | 2220482 | Cover, Right Contactor Box | 1 | |
| 17 | 8070012 | Filter Relay - 18A 24VAC | 1 | |

PART NOTES:

- [1] - Used on some CE WYE configurations
- [2] - only in 14kW & 17kW unitsHeat
- [3] - only in 22kW unitsHeat
- [4] - Latch
- [5] - Full Vat has three relays, Dual-Vat has six relays

Protector® Series Electric Fryers

Element Tube Assemblies



Protector® Series Electric Fryers

Element Tube Assemblies

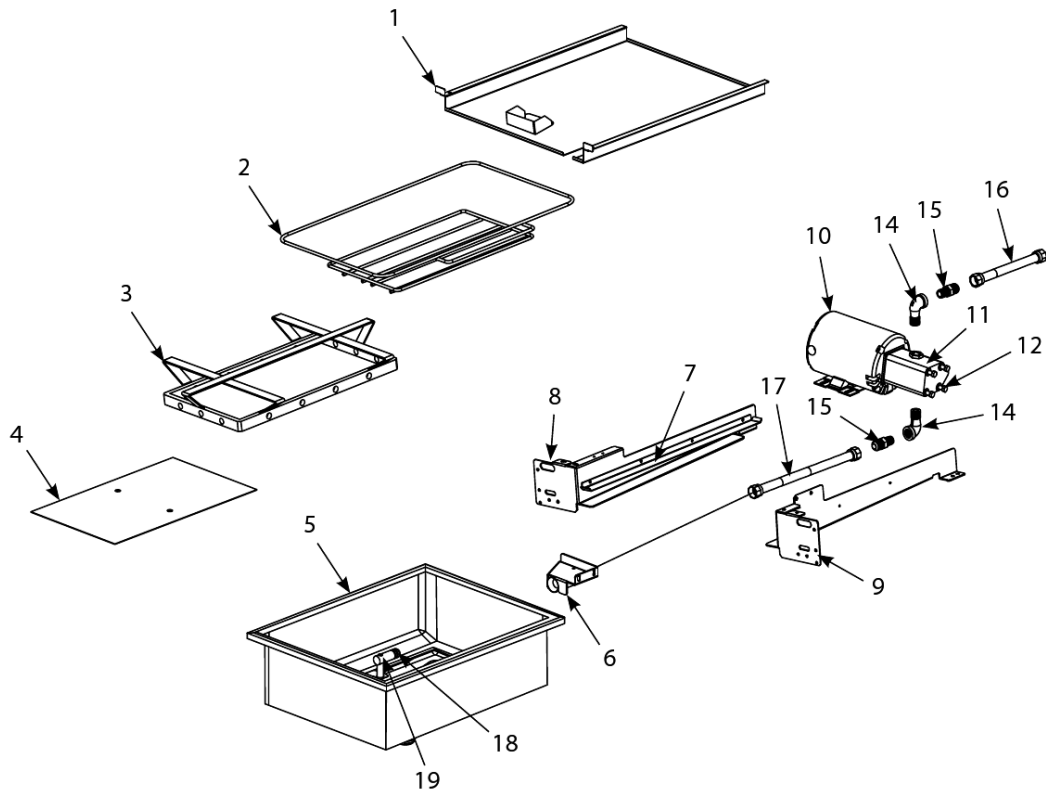
| # | PART # | DESCRIPTION | QTY | Note |
|-----|-----------|---|-----|------|
| 1 | 1067653SP | Tube Assembly Element, Full-Vat | 1 | |
| 2 | 1080315 | Bracket Assembly, LH Element Tube Support | 1 | |
| 3 | 1080316 | Bracket Assembly, RH Element Tube Support | 1 | |
| 4 | 2200122 | Plate, Element Tube Support Inner | 1 | |
| 5 | 2200123 | Plate, Element Tube Support Outer | 1 | |
| 6 | 1067651SP | Bracket Assembly, LH Upper Spring | 1 | |
| 6a | 1066569 | Bracket Assembly, LH Upper Spring | 1 | |
| 7 | 1067652SP | Bracket Assembly, RH Upper Spring | 1 | |
| 7a | 1066570 | Bracket Assembly, RH Upper Spring | 1 | |
| 8 | 8102992 | Tube, Full Vat Element Mounting | 1 | |
| 9 | 8102993 | Bushing, Tube End Teflon | 1 | |
| 10 | 1066587 | Magnetic Position Sensor | 1 | |
| 10a | 8262228 | Tilt Switch, CE | 1 | [1] |
| 10b | 8103007 | Magnet - Ring | 1 | |
| 10c | 2300794 | Bracket, Magnetic Position Sensor Wire | 1 | |

PART NOTES:

[1] - Full-Vat requires one switch and Dual-Vat requires two

Protector® Series Electric Fryers

Filtration System Components



Protector® Series Electric Fryers

Filtration System Components

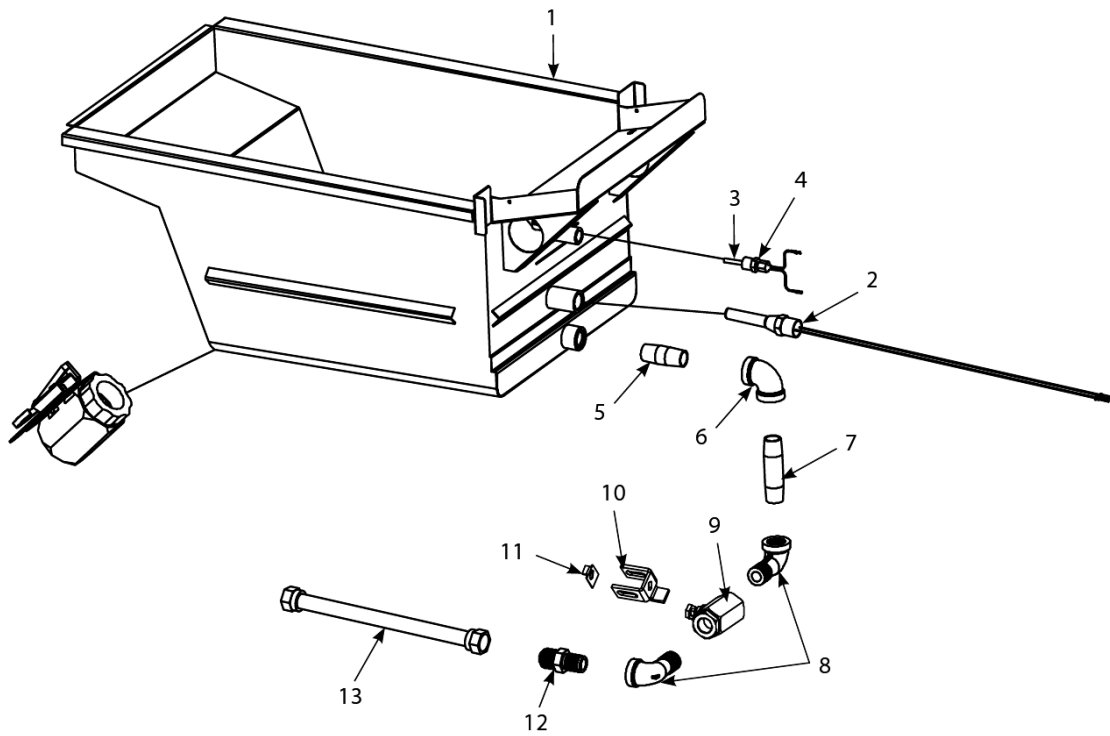
| # | PART # | DESCRIPTION | QTY | Note |
|-----|-----------|---|-----|------|
| 1 | 8236560 | Lid, Multi-Vat Fryers, Standard Size Filter Pan | 1 | |
| 1a | 8236362 | Lid, Two-Vat Fryer, Half Size Filter Pan | 1 | |
| 2 | 8103276 | Crumb Tray, Standard Size Filter Pan 3, 4 and 5 Vat | 1 | |
| 2a | 8103288 | Crumb Tray | 1 | |
| 3 | 8103419 | Hold-Down Ring for Paper 13.65 x 21.41, Standard Size Pan 3, 4, and 5 Vat | 1 | |
| 3a | 8103289 | Hold-Down Ring - 11.2 x 19.1 | 1 | |
| 4 | 8122025 | SanaGrid Filter Screen | 1 | |
| 4a | 8122041 | SanaGrid Filter Screen, Two-Vat Fryer, Half Size Filter Pan | 1 | |
| 5 | 1080549SP | Pan, One-Piece Filter LOV Standard Size | 1 | |
| 5a | 1068211SP | Pan, Two-Vat Fryer, Half Size | 1 | |
| 6 | 8236191 | Suction Tube Standard | 1 | |
| 6a | 8236399 | Suction Tube Two Vat | 1 | |
| 7 | 2203879 | Rail, Filter Pan Retaining Standard | 1 | |
| 7a | 2202999 | Rail, Filter Pan Retaining Two Vat | 1 | |
| 8 | 2203748 | Support, Left Filter Pan | 1 | |
| 8a | 2203275 | Support, Left Filter Pan Two Vat | 1 | |
| 9 | 2203749 | Support, Right Filter Pan | 1 | |
| 9a | 1068487 | Support, Right Filter Pan Two Vat | 1 | |
| 10 | 8261785 | Motor and Gasket Kit - 100V/50-60 Hz | 1 | |
| 10a | 8261712 | Motor and Gasket Kit - 115V/50-60 Hz | 1 | |
| 10b | 8261756 | Motor and Gasket Kit - 208V/50-60 Hz | 1 | |
| 10c | 8261270 | Motor and Gasket Kit - 220-240V/50-60 Hz | 1 | |
| 10d | 8261755 | Motor and Gasket Kit - 250V/50-60 Hz | 1 | |
| 11 | 8261264 | Pump Kit - 4 GPM | 1 | [1] |
| 11a | 8160093 | Gasket - Pump/Motor | 1 | |
| 12 | 8090514 | Cap Screw - 0.3125" 18 NC Hex | 1 | [2] |
| 13 | 80711973 | Pump Seal Kit - Viking | 1 | |
| 14 | 8130165 | Elbow - 0.5" x 90° NPT Street | 1 | |
| 15 | 8101668 | Male Adaptor - 0.625" OD x 0.5" | 1 | |
| 16 | 8101067 | Flexline - Oil Return - 0.625" OD x 8.5" L | 1 | |
| 17 | 8101057 | Flexline - Oil Return - 13" L | 1 | |
| 18 | 8261392 | O-Ring | 5 | |
| 19 | 8130568 | Plug, 0.125" SS NPT, Sq-Head | 1 | [3] |
| 20 | 1065911SP | Heater Strip Assembly, 100-120V 25W 18" | 1 | |
| 20a | 1065912SP | Heater Strip Assembly -208-250V/25W - 18" | 1 | |

PART NOTES:

- [1] - includes gasket and capscrews below
- [2] - Connects pump to motor.
- [3] - two required

Protector® Series Electric Fryers

Frypot Assemblies and Associated Parts



Protector® Series Electric Fryers

Frypot Assemblies and Associated Parts

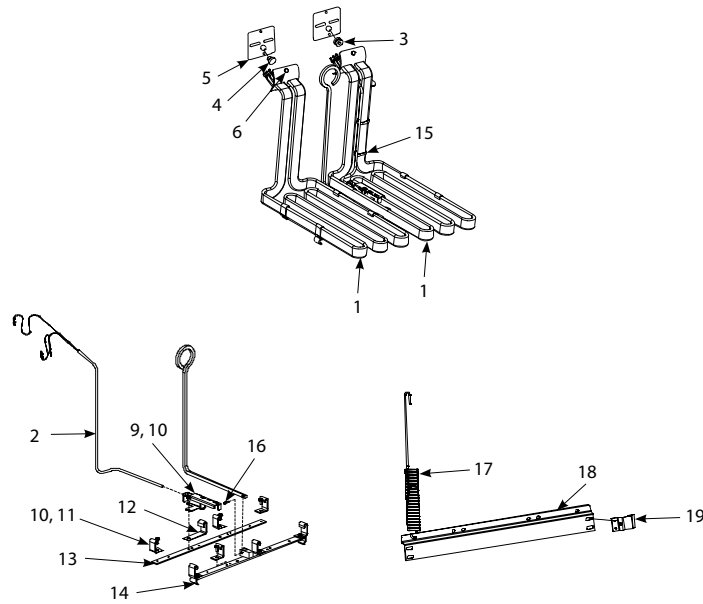
| # | PART # | DESCRIPTION | QTY | Note |
|----|-----------|--|-----|------|
| 1 | 8236912 | Frypot, Full-Vat | 1 | |
| 2 | 8261177 | Thermostat, High-Limit 425°F/218°C | 1 | [1] |
| 2b | 8262456 | Thermostat Assembly - High-Limit - 435°F | 1 | [2] |
| 2c | 8068035SP | High-limit Thermostat | 1 | [3] |
| 2d | 8262455 | Thermostat Assembly - High-Limit - 415°F | 1 | [4] |
| 2e | 8068132 | High-Limit Thermostat, CE other than 22kW | 1 | [5] |
| 2f | 8262457 | Thermostat Assembly, High-Limit Long Standard, CE Full Vat 405°F | 1 | [6] |
| 2g | 8068536 | High-Limit Thermostat, CE 22kW | 1 | [7] |
| 3 | 8074645 | Probe, Temperature ATO RTD | 1 | |
| 4 | 8130617 | Fitting, 0.1875" x 0.25" NPT | 1 | |
| 5 | 8130298 | Nipple, 0.5" x 2.00" NPT BM Pipe | 1 | |
| 6 | 8130062 | Elbow - 0.5" BM x 90° | 1 | |
| 7 | 8130460 | Nipple, 0.5-inch X 3.0-inch NPT | 1 | |
| 8 | 8130165 | Elbow - 0.5" x 90° NPT Street | 1 | |
| 9 | 8100278 | Valve, 0.5" Ball | 1 | |
| 10 | 2005438 | Handle, Rear Flush Valve | 1 | |
| 11 | 9002935 | Retainer, Nut Oil Return Valve | 1 | |
| 12 | 8101668 | Male Adaptor - 0.625" OD x 0.5" | 1 | |
| 13 | 8101055 | Flexline - 0.625" OD x 11.5" L | 1 | |

PART NOTES:

- [1] - 218°C14 and 17kW FV
- [2] - 224°C22kW
- [3] - 224°C22kW Color Coded Red
- [4] - 213°C14kW and 17kW CE
- [5] - Color-Coded Yellow
213°C14kW and 17kW CEColor-Coded Yellow
- [6] - 207°C22kW CE
- [7] - 207°C22kW CEColor-Coded White

Protector® Series Electric Fryers

Heating Element Assemblies and Hardware



Protector® Series Electric Fryers

Heating Element Assemblies and Hardware

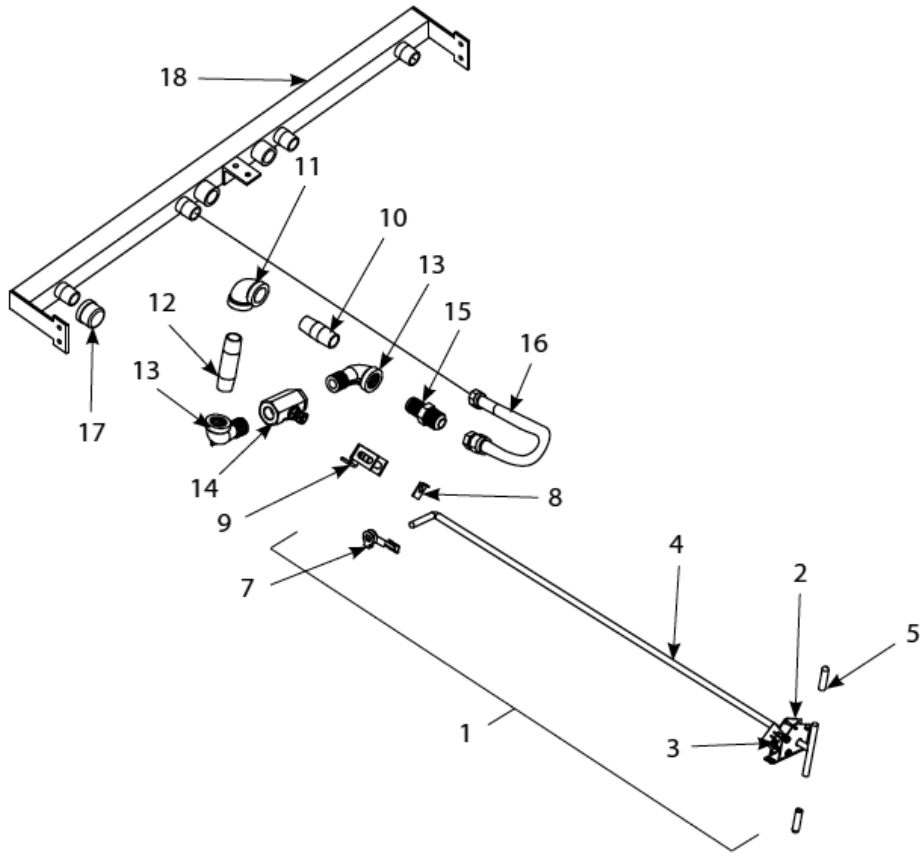
| # | PART # | DESCRIPTION | QTY | Note |
|----|---------|---|-----|------|
| 1 | 8262198 | Element Kits - 200V - 17.0 kW | 1 | [1] |
| 1a | 8262201 | Element Kits - 200V - 18.5 kW | 1 | [2] |
| 1b | 8262208 | Element Kits - 200V - 11.0 kW | 1 | [2] |
| 1c | 8262192 | Element Kits - 208V - 17.0 kW | 1 | [2] |
| 1d | 8262197 | Element Kits - 208V - 18.5 kW | 1 | |
| 1e | 8262210 | Element Kits - 208V - 11.0 kW | 1 | [2] |
| 1f | 8262200 | Element Kits - 220V - 17.0 kW | 1 | [3] |
| 1g | 8262205 | Element Kits - 220V - 11.0 kW | 1 | [2] |
| 1h | 8262193 | Element Kits - 230V - 17.0 kW | 1 | [2] |
| 1i | 8262199 | Element Kits - 230V - 18.5 kW | 1 | [2] |
| 1j | 8262206 | Element Kits - 230V - 11.0 kW | 1 | [2] |
| 1k | 8262194 | Element Kits - 240V - 17.0 kW | 1 | [2] |
| 1l | 8262207 | Element Kits - 240V - 11.0 kW | 1 | [2] |
| 1m | 8262204 | Element Kits - 400V - 8.5 kW | 1 | [2] |
| 1n | 8262195 | Element Kits - 440V - 17.0 kW | 1 | [2] |
| 1o | 8262202 | Element Kits - 440V - 18.5 kW | 1 | [2] |
| 1p | 8262211 | Element Kits - 440V - 11.0 kW | 1 | [2] |
| 1q | 8262196 | Element Kits - 480V - 17.0 kW | 1 | [2] |
| 1r | 8262203 | Element Kits - 480V - 18.5 kW | 1 | [2] |
| 1s | 8262209 | Element Kits - 480V - 11.0 kW | 1 | [2] |
| 2 | 8262212 | Temperature Probe Kit | 1 | |
| 2a | 8074324 | Probe, Temperature Fast Ready | 1 | |
| 3 | 8160681 | Grommet, Probe | 1 | |
| 4 | 8160480 | Plug, .375-inch Dome | 1 | |
| 5 | 8160688 | Gasket, Element | 1 | |
| 6 | 8091003 | Screw - #10-32 x 0.375" Hex Trim Head SS | 1 | |
| 7 | 8090766 | Nut, 10-32 Keps Hex SS | 1 | |
| 8 | 2304028 | Wrench, Element Tube Nut Spanner | 1 | |
| 9 | 9105022 | Bracket, Temperature Probe | 1 | |
| 9a | 2300784 | Bracket - Temperature Probe 8.5/11 kW | 1 | |
| 10 | 8090518 | Screw, 8-32 x 0.375-inch Hex Washer Slotted Head SS | 1 | |
| 11 | 9102042 | Clamp, Element | 1 | [4] |
| 12 | 2300781 | Key Operated Switch Ice With Keys | 1 | |
| 13 | 2300780 | Support, Full-Vat Element Rear | 1 | |
| 14 | 8235621 | Support, Full-Vat Element Front | 1 | |
| 15 | 8090567 | Tie-Wrap - Metal | 1 | |
| 16 | 8101212 | Pin, .125 X .5-inch Split | 1 | |
| 17 | 2200464 | Bracket, Lower Spring | 1 | |
| 18 | 2200733 | Bracket, Lower Spring Mating | 1 | |
| 19 | 8101233 | Handle, Element Lift | 1 | |

PART NOTES:

- [1] - includes gaskets, grommets, tie wraps, screws and nuts also used for 220V 8.5 kW
- [2] - includes gaskets, grommets, tie wraps, screws and nuts
- [3] - includes gaskets, grommets, tie wraps, screws and nuts also used for 240V 8.5 kW
- [4] - Short

Protector® Series Electric Fryers

Oil Return System Components



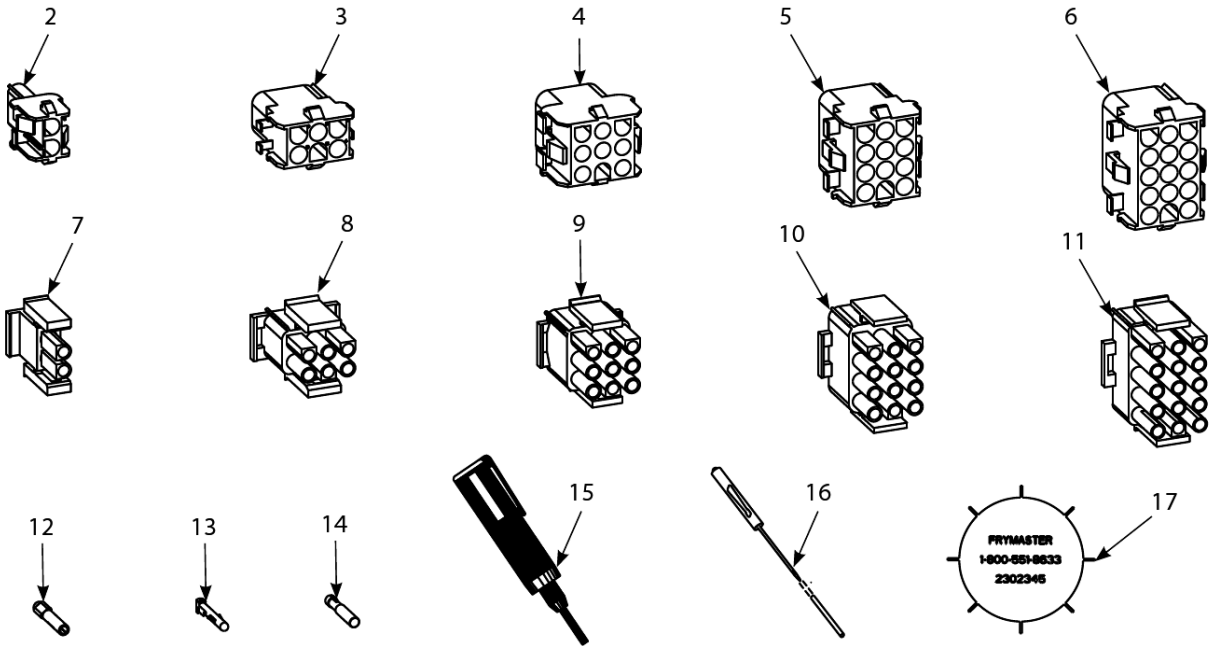
Protector® Series Electric Fryers

Oil Return System Components

| # | PART # | DESCRIPTION | QTY | Note |
|-----|---------|--|-----|------|
| 1 | 1069044 | Handle Assembly, Full-Vat Rear Flush Protector | 1 | |
| 2 | 1065595 | Bracket Switch Assembly | 1 | |
| 3 | 8072103 | Microswitch | 1 | |
| 4 | 8236653 | Handle, Oil Return Protector Rod | 1 | |
| 5 | 8160643 | Grip, Oil Return Valve Handle | 1 | |
| 6 | 8160220 | Insulation, Microswitch | 1 | |
| 7 | 8090601 | Clip, Clevis | 1 | |
| 8 | 9002935 | Retainer, Nut Oil Return Valve | 1 | |
| 9 | 2005438 | Handle, Rear Flush Valve | 1 | |
| 10 | 8130298 | Nipple, 0.5" x 2.00" NPT BM Pipe | 1 | |
| 11 | 8130062 | Elbow - 0.5" BM x 90° | 1 | |
| 12 | 8130460 | Nipple, 0.5-inch X 3.0-inch NPT | 1 | |
| 13 | 8130165 | Elbow - 0.5" x 90° NPT Street | 1 | |
| 14 | 8100278 | Valve, 0.5" Ball | 1 | |
| 15 | 8101668 | Male Adaptor - 0.625" OD x 0.5" | 1 | |
| 16 | 8102532 | Flexline - 7" L | 1 | |
| 17 | 8130907 | Cap, 0.9375-inch Valve Safety | 1 | |
| 18 | 8103015 | Manifold, Two-Station Fryer | 1 | |
| 18a | 8103016 | Manifold, Three-Station Fryer | 1 | |
| 18b | 8103017 | Manifold, Four-Station Fryer | 1 | |
| 18c | 8103018 | Manifold, Five-Station Fryer | 1 | |

Protector® Series Electric Fryers

Wiring Connectors, Pin Terminals, Power Cords and Fasteners



Protector® Series Electric Fryers

Wiring Connectors, Pin Terminals, Power Cords and Fasteners

| # | PART # | DESCRIPTION | QTY | Note |
|-----|-----------|--|-----|------|
| 1 | 8070154 | Power Cord - 120V w/Ground Plug | 1 | |
| 1a | 8071685 | Power Cord - 450V - 18A - 110-inch, 3-wire, 16-gauge | 1 | |
| 1b | 8073817 | Power Cord - 208-250V/3 Ph - 74A - 96" - 4-wire w/plug 8 awg | 1 | |
| 1c | 8074668 | Power Cords, 208-250V/84A 3-Phase 4-wire w/plug 96" 6 awg | 1 | |
| 1d | 8073834 | Power Cords, Cable, 3-Phase 4-Wire | 1 | |
| 1e | 8073428 | Power Cords, 220V/15A 3-wire, w/o plug Export 96" 8 awg | 1 | |
| 1f | 8073836 | Power Cords, 240V/32A 3-Phase 5-wire w/plug Export 86.5" | 1 | |
| 1g | 8073835 | Power Cords, 220-250V 3-Phase 4-wire w/o plug Export 92" | 1 | |
| 1h | 8073867 | Power Cords, 220-250V/50A 3-Phase 5-wire w/plug Export 109" | 1 | |
| 2 | 8071068 | 2-Pin Female | 1 | |
| 3 | 8070158 | 6-Pin Female | 1 | |
| 4 | 8070156 | 9-Pin Female | 1 | |
| 5 | 8070159 | 12-Pin Female | 1 | |
| 6 | 8070875 | 15-Pin Female | 1 | |
| 7 | 8071067 | 2-Pin Male | 1 | |
| 8 | 8070157 | 6-Pin Male | 1 | |
| 9 | 8070155 | 9-Pin Male | 1 | |
| 10 | 8070160 | 12-Pin Male | 1 | |
| 11 | 8070804 | 15-Pin Male | 1 | |
| 12 | 8261341 | Terminal, Female Split Pin | 25 | |
| 13 | 8261342 | Terminal, Male Split Pin | 25 | |
| 14 | 8072518 | Plug, Mate-N-Lock | 1 | [1] |
| 15 | 8070928 | Extract Tool Pin Pusher | 1 | |
| 16 | 8064855 | Pin Pusher Screwdriver Assy | 1 | |
| 17 | 2302345 | SMT Pin Extractor | 1 | |
| 17a | 8074660PK | SMT Pin Service Repair Kit | 1 | |
| 18 | 8090429 | Bolt - 0.25"-20 x 2.00" Hex Head ZP Tap | 1 | |
| 18a | 8261389 | Screw - 0.25"-20 x 0.75" Hex Head ZP | 1 | |
| 19 | 8091020 | Cap Screw, 0.3125"-18 5.50" NC Hex | 1 | [2] |
| 20 | 8090448 | Clip, Tinnerman | 1 | |
| 21 | 8261366 | Nut - #4-40 Keps Hex | 1 | |
| 22 | 8261358 | Nut, 6-32 Keps Hex | 1 | |
| 23 | 8090247 | Nut - #8-32 Keps Hex | 1 | |
| 24 | 8261376 | Nut - #10-32 Keps Hex | 1 | |
| 25 | 8090766 | Nut, 10-32 Keps Hex SS | 1 | |
| 26 | 8090581 | Nut, 0.5 NPT Locking | 1 | |
| 27 | 8090020 | Nut Cap 10-24 NP | 1 | |
| 28 | 8261372 | Nut Grip 0.25-inch 0.25-20 Hex NP | 1 | |
| 29 | 8261368 | Nut - 0.25-20 Serrated Flange | 1 | |
| 30 | 8090535 | Nut, "T" 0.25-inch-20 x 0.4375 SS | 1 | |
| 31 | 8090495 | Nut, 0.25-inch - 20 Press | 1 | |
| 32 | 8090540 | Nut, Lock 0.5-inch-13 Hex 2-Way ZP | 1 | |
| 33 | 8261359 | Screw - #4-40 x 0.75" Slotted Round Head | 1 | |
| 34 | 8261365 | Screw, 6-32 x 0.375-inch Slot Head | 1 | |

Protector® Series Electric Fryers

Wiring Connectors, Pin Terminals, Power Cords and Fasteners

| # | PART # | DESCRIPTION | QTY | Note |
|----|---------|---|-----|------|
| 35 | 8090357 | Screw, 6 x 0.375-inch Phillips Head NP | 1 | |
| 36 | 8090359 | Screw, 8 x 0.25-inch Hex Washer Head | 1 | |
| 37 | 8090360 | Screw, 8 x 0.375-inch Hex Washer Slot Head | 1 | |
| 38 | 8261371 | Screw - #8 x 0.5" Hex Head ZP | 1 | |
| 39 | 8090364 | Screw - #8 x 0.625" Hex Washer Head ZP | 1 | |
| 40 | 8090518 | Screw, 8-32 x 0.375-inch Hex Washer Slotted Head SS | 1 | |
| 41 | 8090104 | Screw, 8-32 x 0.5-inch Slotted Head ZP | 1 | |
| 42 | 8261363 | Screw - #8-32 x 0.5" NP | 1 | |
| 43 | 8261360 | Screw - #10-24 x 0.3125" Round Slot Head ZP | 1 | |
| 44 | 8261330 | Screw, 10-32 x 0.375-inch Slot Head SS | 1 | |
| 45 | 8091003 | Screw - #10-32 x 0.375" Hex Trim Head SS | 1 | |
| 46 | 8090270 | Screw, 10-32 x 0.5-inch Phillips Head ZP | 1 | |
| 47 | 8261375 | Screw - #10-32 x 0.75" - Hex Trim Head SS | 1 | |
| 48 | 8091000 | Screw - #10-32 x 1.25" - Hex | 1 | |
| 49 | 8261374 | Screw - #10 x 0.5" Hex Head | 1 | |
| 50 | 8090266 | Screw, 10 x 0.5-inch Phillips Head ZP | 1 | |
| 51 | 8090475 | Screw - #10-32 x 0.3125" Hex | 1 | |
| 52 | 8090123 | Screw - #10 x 0.75" - Slot Head | 1 | |
| 53 | 8261389 | Screw - 0.25"-20 x 0.75" Hex Head ZP | 1 | |
| 54 | 8090582 | Washer 0.5 NPT Locking | 1 | |
| 55 | 8090184 | Washer, #10 LK ZP | 1 | |
| 56 | 8090190 | Washer, .625 X .275 X 40 Flat SS | 1 | |
| 57 | 8090191 | Washer, Lock 0.25 Spring ZP | 1 | |
| 58 | 8090193 | Flat Washer - 0.25" Nylon | 1 | |
| 59 | 8090194 | Flat Washer - 0.3125" ZP | 1 | |

PART NOTES:

- [1] - Dummy Pin
- [2] - Connects pump to motor