

# FilterQuick™ FQG30U easyTouch® Gas Fryer

## Parts Manual

This manual is updated as new information and models are released. Visit our website for the latest manual.



Part Number: FRY\_P\_8197478 06/2019

**NOTICE**

**IF, DURING THE WARRANTY PERIOD, THE CUSTOMER USES A PART FOR THIS FRYMASTER EQUIPMENT OTHER THAN AN UNMODIFIED NEW OR RECYCLED PART PURCHASED DIRECTLY FROM FRYMASTER DEAN, OR ANY OF ITS FACTORY AUTHORIZED SERVICERS, AND/OR THE PART BEING USED IS MODIFIED FROM ITS ORIGINAL CONFIGURATION, THIS WARRANTY WILL BE VOID. FURTHER, FRYMASTER DEAN AND ITS AFFILIATES WILL NOT BE LIABLE FOR ANY CLAIMS, DAMAGES OR EXPENSES INCURRED BY THE CUSTOMER WHICH ARISE DIRECTLY OR INDIRECTLY, IN WHOLE OR IN PART, DUE TO THE INSTALLATION OF ANY MODIFIED PART AND/OR PART RECEIVED FROM AN UNAUTHORIZED SERVICER.**

**FQG30U easyTouch® FILTERQUICK™ SERIES GAS FRYERS**  
**PARTS MANUAL**  
**TABLE OF CONTENTS**

---

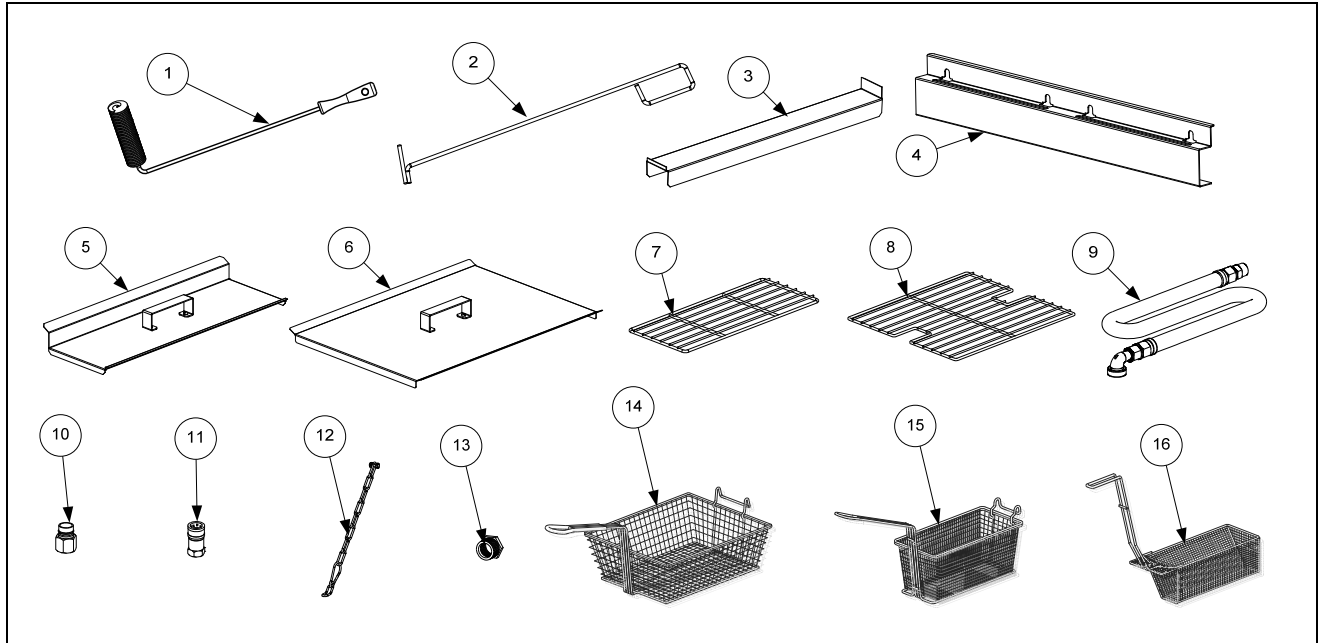
**CHAPTER 1: Parts List**

|        |  |      |
|--------|--|------|
| 1.1    | Accessories .....  | 1-1  |
| 1.2    | Doors, Sides, Flue Caps, Top Caps and Casters.....                           | 1-2  |
| 1.3    | Control Panel Frame Assemblies.....  | 1-3  |
| 1.4    | Drain Valves and Associated Parts.....                                       | 1-4  |
| 1.5    | Electronics and Electrical Components .....                                  | 1-5  |
| 1.5.1  | Component Boxes and Associated Parts .....                                   | 1-5  |
| 1.5.2  | Transformer Boxes.....   | 1-6  |
| 1.5.3  | FIB (Filter Interface Board) Auto Top Off / Filter Box Components .....      | 1-8  |
| 1.5.4  | VIB (Valve Interface Board) Components .....                                 | 1-9  |
| 1.5.5  | Power Reset Switch and USB Connector.....                                    | 1-9  |
| 1.6    | Wiring.....  | 1-10 |
| 1.6.1  | Wiring Harness Full Vat - SIB to Rear of Component Box Fryer w/out OIB ..... | 1-10 |
| 1.6.2  | Wiring Harness Full Vat - SIB to Rear of Component Box Fryer w OIB.....      | 1-11 |
| 1.6.3  | Wiring Harness Dual Vat - SIB to Rear of Component Box w/out OIB .....       | 1-12 |
| 1.6.4  | Wiring Harness Dual Vat - SIB to Rear of Component Box w OIB.....            | 1-13 |
| 1.6.5  | Ignition Wiring Harness Full Vat – Control Box to Components .....           | 1-14 |
| 1.6.6  | Ignition Wiring Harness Dual Vat – Control Box to Components .....           | 1-15 |
| 1.6.7  | FIB Wiring Harness .....   | 1-16 |
| 1.6.8  | Miscellaneous Wiring Harnesses and Cord Sets .....                           | 1-16 |
| 1.7    | Frypots and Associated Components .....                                      | 1-17 |
| 1.7.1  | Full-Vat Frypot Components .....   | 1-17 |
| 1.7.2  | Dual-Vat Frypot Components .....   | 1-19 |
| 1.7.3  | Frypot Assemblies and Associated Parts.....                                  | 1-21 |
| 1.8    | Oil Return Manifolds .....   | 1-22 |
| 1.9    | Gas Supply and Combustion System Components .....                            | 1-22 |
| 1.10   | Gas Valves and Associated Components .....                                   | 1-24 |
| 1.11   | Filtration System Components .....   | 1-26 |
| 1.12   | ATO (Automatic Top-Off) Components.....                                      | 1-28 |
| 1.12.1 | JIB Cradle, JIB Box, JIB Cap Assemblies .....                                | 1-28 |
| 1.12.2 | ATO Pump Assembly Non-Bulk .....   | 1-29 |
| 1.12.3 | ATO Pump Assembly Bulk .....   | 1-30 |
| 1.12.4 | Shortening Melting Unit.....   | 1-31 |
| 1.13   | Bulk Oil System Components .....   | 1-32 |
| 1.13.1 | Bulk Oil Dispose Waste Valve.....  | 1-32 |
| 1.13.2 | Bulk Oil Manifold and Accessories .....                                      | 1-33 |
| 1.14   | Basket Lift Assembly and Associated Parts.....                               | 1-35 |
| 1.15   | Oil Quality Sensor (OQS) and Associated Parts .....                          | 1-37 |
| 1.16   | FilterQuick™ FQG30-T Series Simplified Wiring.....                           | 1-38 |

# FQG30U easyTouch® FILTERQUICK™ SERIES GAS FRYERS

## PARTS LIST

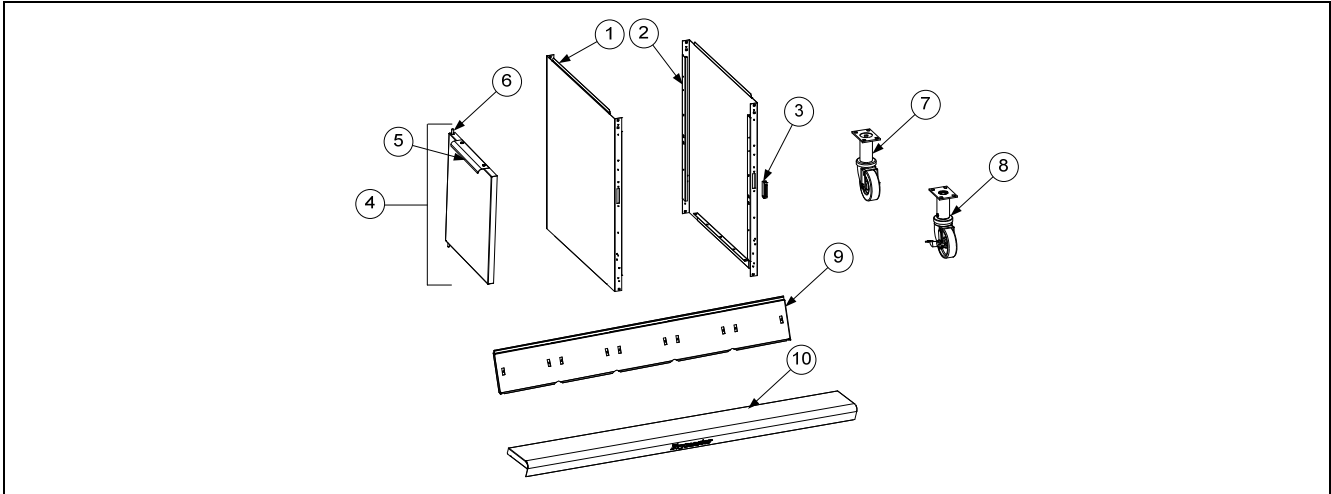
### 1.1 Accessories



| ITEM | PART #    | COMPONENT   |
|------|-----------|---|
| 1    | 8030429   | Brush, Frypot   |
| 2    | 8030388   | Fryers Friend   |
| 3    | 1086156   | Connecting Strip, Frypot  |
| 4    | 2307495   | Hanger, Basket Two Station <i>(use two for a Four Station fryer)</i>      |
|      | 2307497   | Hanger, Basket Three Station  |
| 5    | 8238898   | Cover, Frypot, Dual Vat   |
| 6    | 8238897   | Cover, Frypot, Full Vat   |
| 7    | 8030372   | Basket Support Rack, Dual Vat   |
| 8    | 8030375   | Basket Support Rack, Full Vat   |
| *    | 8030136   | Basket Support Screen, Full Vat (screen w/handle used in place of Item 8) |
| 9    | 8100478   | Gas Line, 1-Inch Dormont Flexible   |
|      | 8061698SP | 36-Inch (for gas line only (w/o Items 10 and 11), use 8100088)            |
|      | 8061699   | 48-Inch (for gas line only (w/o Items 10 and 11), use 8100085)            |
| 10   | 8100074   | Quick-Disconnect Fitting, 1-Inch Male                                     |
| 11   | 8100073   | Quick-Disconnect Fitting, 1-Inch Female                                   |
|      | 8103745   | Quick Disconnect Fittings, 3/4" set (includes male and female connectors) |
| 12   | 8260900   | Kit, Chain Restraint  |
| *    | 8261095   | Kit, Anchor Strap   |
| 13   | 8261045   | Bushing, Flexible Gas Line (8130032)                                      |
| 14   | 8030099   | Basket, Full Size   |
| 15   | 8030271   | Basket, Twin Size   |
| 16   | 8030511   | Tray, Sediment GL30   |
| *    | 8030002   | Powder, Filter (80- 1-Cup Applications)                                   |
| *    | 8030445   | Pack, 100-Sheet Filter Paper 16.5 X 25.5                                  |

\* Not illustrated.

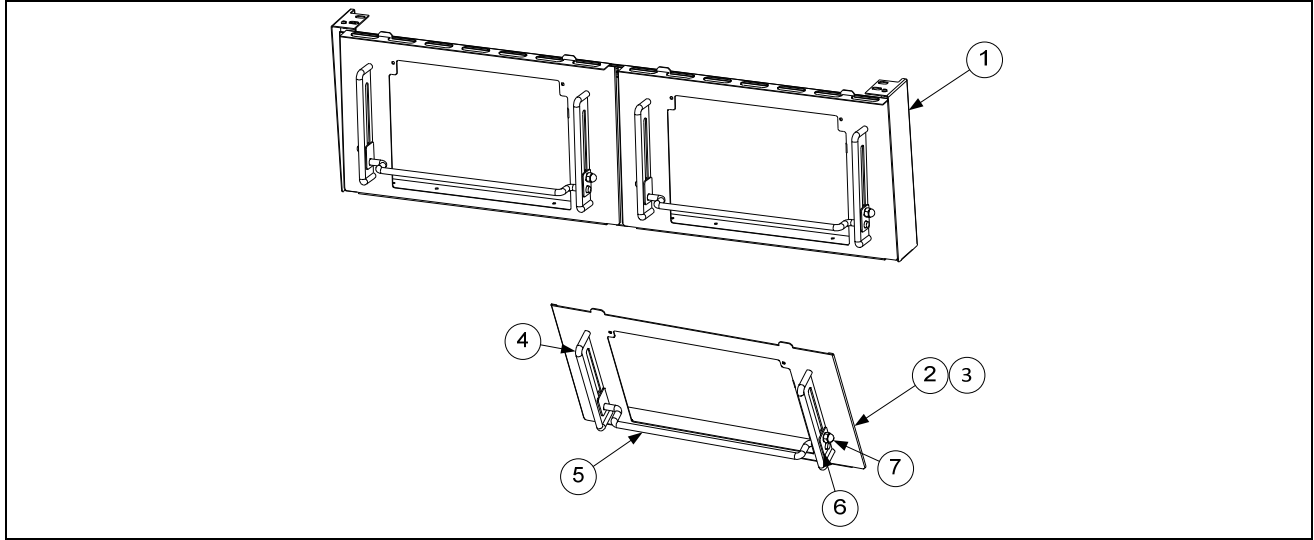
## 1.2 Doors, Sides, Flue Caps and Casters



| ITEM | PART #  | COMPONENT  |
|------|---------|--|
| 1    | 2611424 | Side, Cabinet Left   |
| 2    | 2621424 | Side, Cabinet Right  |
| 3    | 8101105 | Magnet, Door (vertical) (use 8102346 for horizontal over filter pan)                                       |
| 4    | 1064397 | Door, Left or Right (Left shown - move handle to bottom for right) (use 1080915 for Door w/ Manual Holder) |
| 5    | 2304960 | Handle, Eurolook Door  |
| 6    | 1064067 | Pin Assembly, Door   |
| *    | 8100275 | Spring, Door Pin   |
| *    | 8090970 | Retaining Ring   |
| *    | 2307192 | Hinge, Door Lower  |
| 7    | 8100327 | Caster without Brake   |
| 8    | 8100944 | Caster with Brake  |
| 9    |         | Flue Cap-Stainless Steel   |
|      | 8239440 | Two Station Fryer  |
|      | 8239447 | Three Station Fryer  |
|      | 8239448 | Four Station Fryer   |
|      | N/A     | Five Station Fryer   |
| 10   |         | Top Cap  |
|      | 1086158 | Two Station Fryer  |
|      | 1086159 | Three Station Fryer  |
|      | 1086160 | Four Station Fryer   |
|      | 1086161 | Five Station Fryer   |

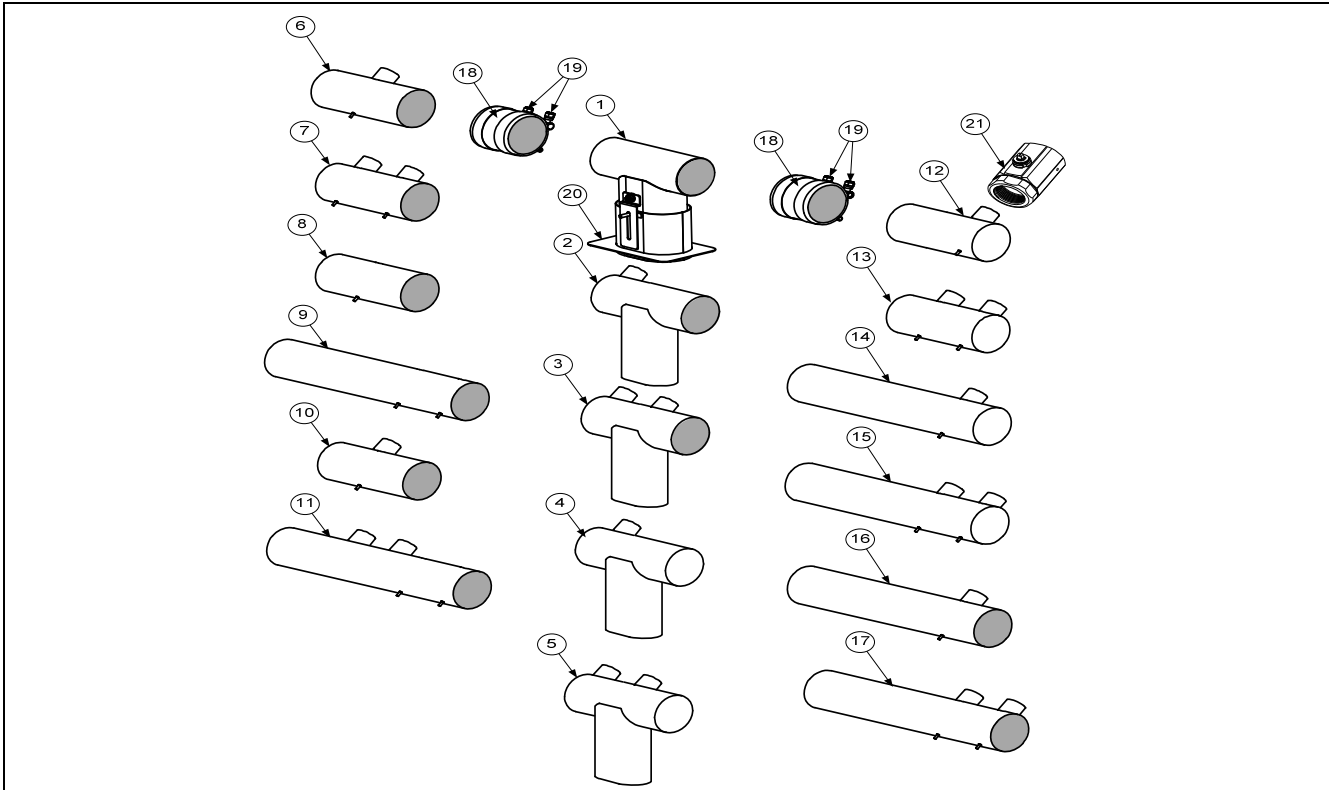
\* Not illustrated.

### 1.3 Control Panel Frame Assemblies



| ITEM | PART #  | COMPONENT                            |
|------|---------|--------------------------------------|
| 1    | 1087710 | Frame Assembly, Control 2-Battery    |
|      | 1087711 | Frame Assembly, Control 3-Battery    |
|      | 1087712 | Frame Assembly, Control 4-Battery    |
| 2    | 1087744 | Bezel Assembly, Control FQ4000       |
| 3    | 2602083 | Bezel, Single Touchscreen FQ         |
| 4    | 8104898 | Guide, Controller Adjustable Guard   |
| 5    | 8104899 | Bar, Guard (Touch Screen Protection) |
| 6    | 8104714 | Plate, Outside Tightening            |
| 7    | 8090047 | Nut, Cap ¼-20                        |

## 1.4 Drain Tube Sections and Associated Parts

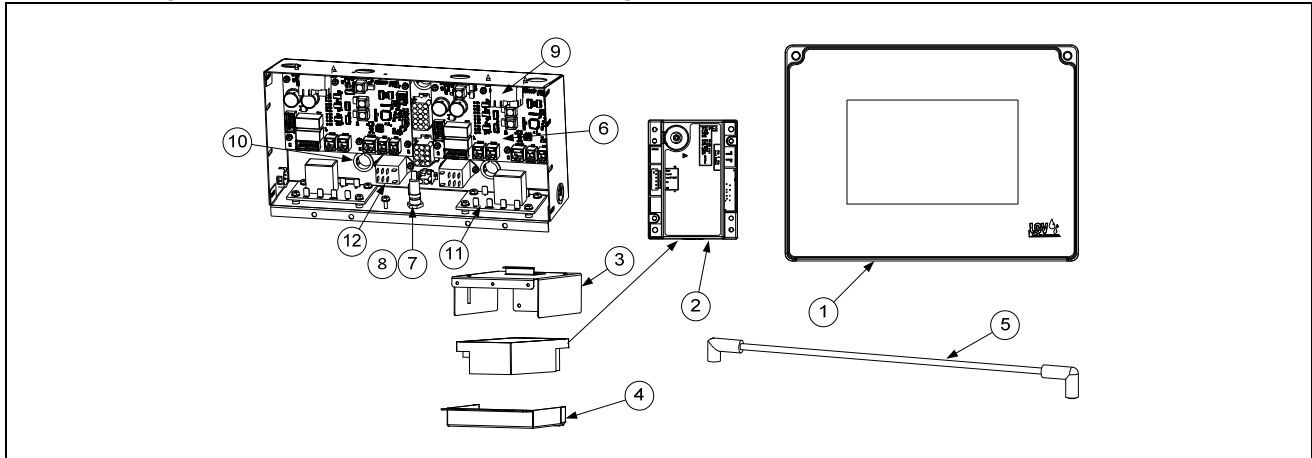


| ITEM | PART #  | COMPONENT  |
|------|---------|--|
| 1    | 1085906 | Drain Tube, Dump Left Closed/Right End Open ( <i>Use 1085915 for Bulk</i> )            |
| 2    | 1085904 | Drain Tube, Dump Full-Vat Left Closed/Right End Open ( <i>Use 1085911 for Bulk</i> )   |
| 3    | 1085917 | Drain Tube, Dump Dual-Vat Left Closed/Right End Open ( <i>Use 1085916 for Bulk</i> )   |
| 4    | 1085905 | Drain Tube, Dump Full-Vat Left Closed/Right End Closed ( <i>Use 1085914 for Bulk</i> ) |
| 5    | 1085919 | Drain Tube, Dump Dual-Vat Left Closed/Right End Closed ( <i>Use 1085918 for Bulk</i> ) |
| 6    | 8237322 | Drain Tube, Full-Vat Left and Right Open   |
| 7    | 8237324 | Drain Tube, Dual-Vat Left and Right Open   |
| 8    | 8103550 | Drain Tube, Short, Open Both Ends  |
| 9    | 8103551 | Drain Tube, Long, Open Both Ends   |
| 10   | 8238812 | Drain Tube, Full -Vat Left and Right Open  |
| 11   | 8238813 | Drain Tube, Dual-Vat Left and Right Open   |
| 12   | 8237330 | Drain Tube, Full-Vat Left Open/Right End Closed  |
| 13   | 8237331 | Drain Tube, Dual-Vat Left Open/Right End Closed  |
| 14   | 8237329 | Drain Tube, Full-Vat Left Open/Right End Closed  |
| 15   | 8237326 | Drain Tube, Dual-Vat Left Open/Right End Closed  |
| 16   | 8237328 | Drain Tube, Full-Vat Left and Right Open 15.31"  |
|      | 8238791 | Drain Tube, Full-Vat Left and Right Open 18.95"  |
| 17   | 8237327 | Drain Tube, Dual-Vat Left and Right Open 15.31"  |
|      | 8238814 | Drain Tube, Dual-Vat Left and Right Open 18.95"  |
| 18   | 8091095 | Clamp  |
| 19   | 8160630 | Vinyl Cap  |
| 20   | 8237480 | Guard, Filter Lid Splash 2 battery   |
|      | 8237915 | Guard, Filter Lid Splash 3, 4 and 5 battery  |
| 21   | 8104353 | Valve, Drain 1 1/4" NPT  |

\* Not illustrated.

## 1.5 Electronics and Electrical Components

### 1.5.1 Component Boxes and Associated Components

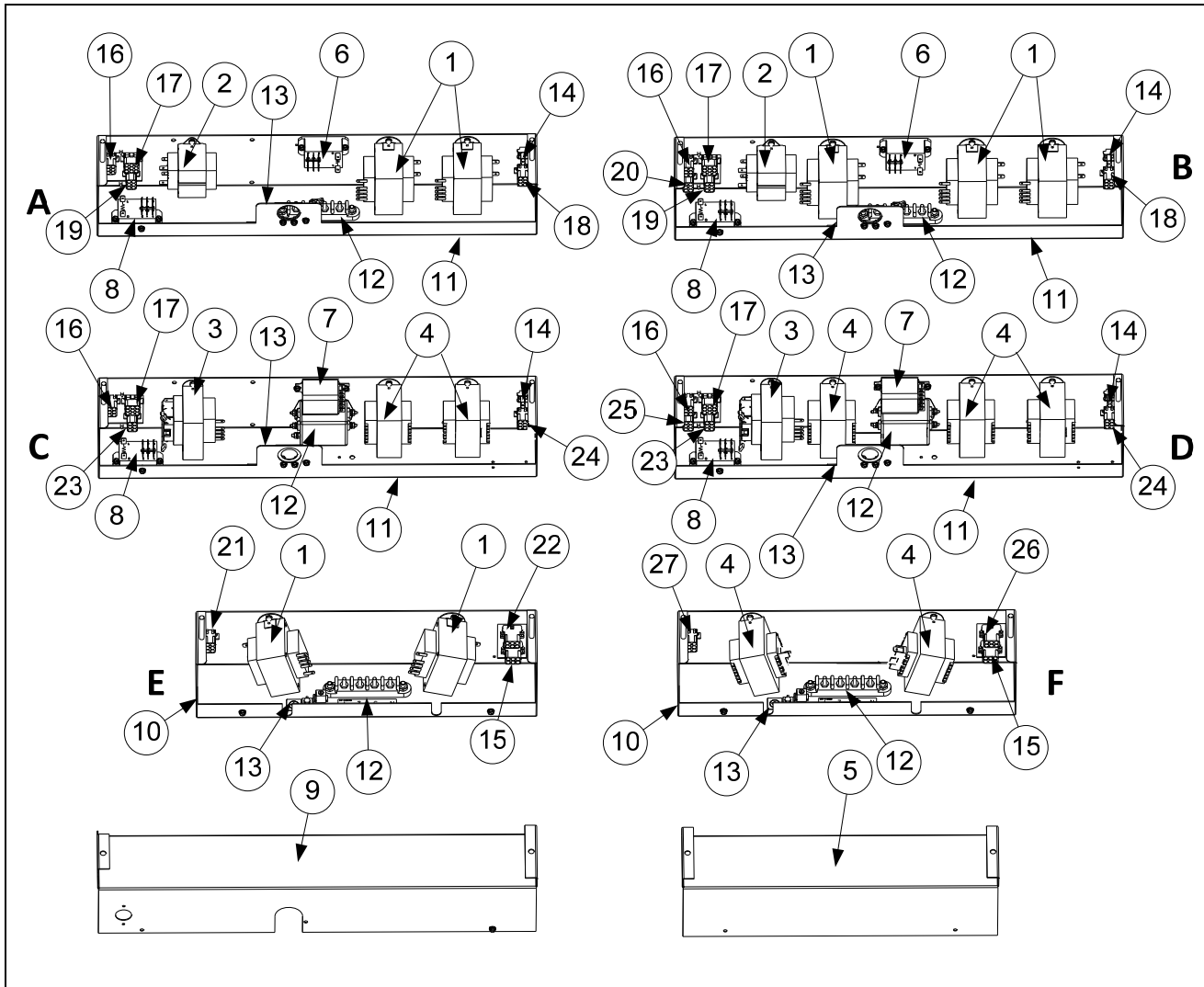


| ITEM | PART #    | COMPONENT  |
|------|-----------|--|
| √ 1  | 1087515SP | Controller, FQ4000 <b>Burger King/General Market</b>   |
| √    | 1087847SP | Controller, FQ4000 <b>Taco Bell</b>  |
| √    | 1087769SP | Controller, FQ4000 <b>Arby's</b>   |
| √ 2  | 8075949   | Module, Ignition Single Spark Fenwal   |
| √    | 8076382   | Module, Ignition Single Spark Fenwal FV (Left) / DV Australia 3 sec                                |
| √    | 8076383   | Module, Ignition Single Spark Fenwal FV (Right) Australia 4 sec                                    |
| √ *  | 8076366   | Harness, Ignition Module Fenwal FV (rear of component box to components)                           |
| √ *  | 8076367   | Harness, Ignition Module Fenwal DV (rear of component box to components)                           |
| 3    | 1087218   | Plate, Assy Fenwal Module Mounting   |
| 4    | 8242482   | Cover, Fenwal Ignition Module  |
| √ 5  | 8075614   | Cable, Ignition 12-inch  |
| √ 6  | 1085979   | Board, Interface SIB (Smart Interface Board)   |
| √ 7  | 8071321   | Fuse Holder  |
| √ 8  | 8075570   | Fuse 3.5A 250V   |
| √ 9  | 8071683   | Relay, Blower 12VDC  |
| 10   | 8071926   | Bushing, .875 Split  |
| √ 11 | 8074812   | Relay Board, 7-second Time Delay 120V ( <b>U.S., Canadian and Mexico units</b> )                   |
|      | 8074934   | Relay Board, 7-second Time Delay 220V, 230V, 240V and 250V units ( <b>Intl units</b> )             |
|      | 8075731   | Relay Board, 7-second Time Delay 100V ( <b>Japan</b> )   |
| √ 12 | 8075623   | Relay, 24VDC SPDT OIB (Oil Is Back) Sensor   |
| *    | 8075829   | Speaker 4 ohm  |
| *    | 8072659   | Switch, Momentary ( <i>Power Reset, only in far-left component box prior to 12/6/2017</i> )        |
| √ *  | 8104320   | Lanyard, Controller Restraint  |
| *    | 8101164   | Block, One-Piece Screwless Terminal  |
| *    | 8160217   | Insulation, Terminal Block Paper   |
|      |           | <b>See Wiring Diagrams in FQG30-T Service Manual for cable locations</b>                           |
| *    | 8075553   | Cable, P-Bus Left SIB (J9) to Right SIB (J9)   |
| *    | 8075555   | Cable, P-Bus w/ power Right SIB (J10) to VIB (Valve Interface Board) (J2)                          |
| *    | 8075551   | Cable, C-Bus Right SIB (J7) to FIB (Filtration Interface Board) (J3)                               |
| *    | 8075549   | Cable, C-Bus Right SIB (J7) to Right SIB (J8) (Connects component boxes together)                  |
| *    | 8076106   | Adapter, RJ11 CAN SIB (J8) to Legacy 6-pin CAN (Micro Mate & Lock) (connects OQS sensor to SIB 5") |
| *    | 8074552   | Terminator, CAN (ONLY used on OQS harness Y- adaptor)  |
| *    | 8075632   | Terminator, CAN End Communication RJ11 (used in SIB J8 if OQS is <b>NOT</b> installed)             |
| *    | 8076243   | Harness, Wire SIB to Components FV ( <b>without OIB</b> )  |
| *    | 8076244   | Harness, Wire SIB to Components DV ( <b>without OIB</b> )  |
| *    | 8076364   | Harness, Wire SIB to Components FV ( <b>with OIB</b> )   |
| *    | 8076365   | Harness, Wire SIB to Components DV ( <b>with OIB</b> )   |

\* Not illustrated. √ Recommended parts.



## 1.5.2 Transformer Boxes



| ITEM | PART #  | COMPONENT   |
|------|---------|---|
|      |         | Box Assembly, Transformer   |
| A    | 1088351 | 230/430 (430 has added cord set 1087810)                          |
| B    | 1088367 | 230/430 CE Export (430-T has added cord set 1088370)              |
| C    | 1088352 | 330 (530 has added cord set 1088353)                              |
| D    | 1088368 | 330 CE Export (530 has added cord set 1088371)                    |
| E    | 1087813 | 430/530 Non-CE 208/220/230/240V                                   |
| F    | 1088369 | 430/530 CE Export 100V/120V (530-T CE has added cord set 1088371) |
| √ 1  | 8075362 | Transformer, 115-240V 80VA 24VAC                                  |
| √ 2  | 8070800 | Transformer, 120V/24V 50VA Filter                                 |
| √ 3  | 8072180 | Transformer, 120V/24V 50VA Filter                                 |
| √ 4  | 8071022 | Transformer, 220/240V 75VA  |

√ Recommended parts.

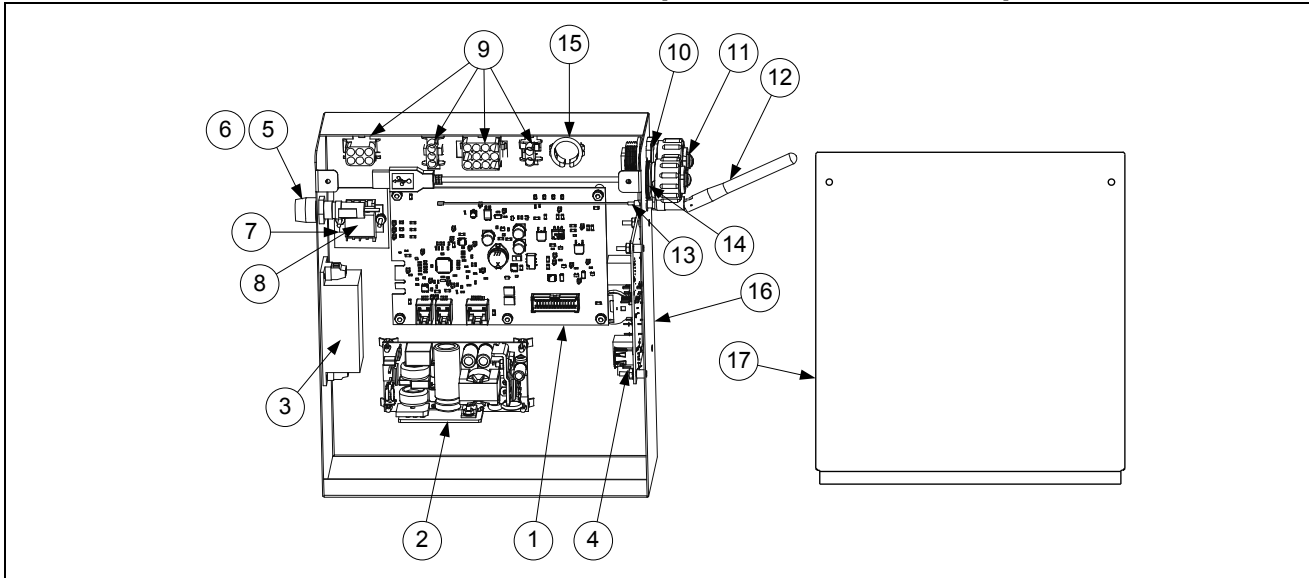
### 1.5.2 Transformer Boxes cont.

| ITEM | PART #  | COMPONENT  |
|------|---------|--|
| 5    | 2401696 | Cover, 430/530 Transformer Box (Small)   |
| √ 6  | 8075802 | Relay, DPDT 30A 120VAC (Control Reset Button) <i>(used for control power reset in domestic units)</i>    |
| √ 7  | 8074770 | Relay, DPDT 20A 240V (Control Reset Button) <i>(used for control power reset in international units)</i> |
| √ 8  | 8074482 | Relay, Filter Pump 30A 24VDC DPDT  |
| 9    | 2203191 | Cover, 230/330 Transformer Box (Large)   |
| 10   | 8239461 | Box, 430/530 Transformer (Small)   |
| 11   | 8239437 | Box, Transformer/Filter (Large)  |
| 12   | 8076428 | Filter, 250V 16A EMI Power Line  |
| 13   | 8070070 | Terminal, Ground Lug   |
| 14   | 1088229 | Harness, Reset Relay   |
| 15   | 1085662 | Harness Assembly, Cord set Female  |
| 16   | 1087727 | Harness, ATO/Filter Control  |
| 17   | 1087726 | Harness, Filter Pump Motor Non-CE and CE Export  |
| 18   | 1088228 | Harness, Transformer Vat #1 230/330 Non-CE   |
| 19   | 1087729 | Harness, Transformer Vat #2 230/330 Non-CE   |
| 20   | 1087730 | Harness, Transformer Vat #3 330 Non-CE   |
| 21   | 1087812 | Harness, Transformer Vat #4/5 430/530 Non-CE   |
| 22   | 1087811 | Harness, Transformer Vat #4#5 430/530 Non-CE   |
| 23   | 1088373 | Harness, Transformer Vat #2 230/330 CE Export  |
| 24   | 1088372 | Harness, Transformer Vat #1 230/330 CE Export  |
| 25   | 1088374 | Harness, Transformer Vat #3 330 CE Export  |
| 26   | 1088375 | Harness, Transformer Vat #4/5 430/530 CE Export  |
| 27   | 1088376 | Harness, Transformer Vat #4/5 430/530 CE Export  |
| *    | 1086452 | Harness Assembly Transformer to Ground with 3-wire Snap CE Export  |
| *    | WIR1198 | Wire Assembly, 430/530 Transformer Box (used in Item E)  |
| *    | WIR1223 | Wire Assembly, 230/430 Transformer/Filter Box (used in Item A)   |
| *    | WIR1224 | Wire Assembly, LOV-T Dom/Filter Box (used in Item B)   |
| *    | WIR1234 | Wire Assembly, FQ4000 Transformer Box CE (used in Item C and D)  |
| *    | WIR1235 | Wire Assembly, FQ430/530 Transformer Box CE (used in Item F)   |

\* Not illustrated

√ Recommended parts.

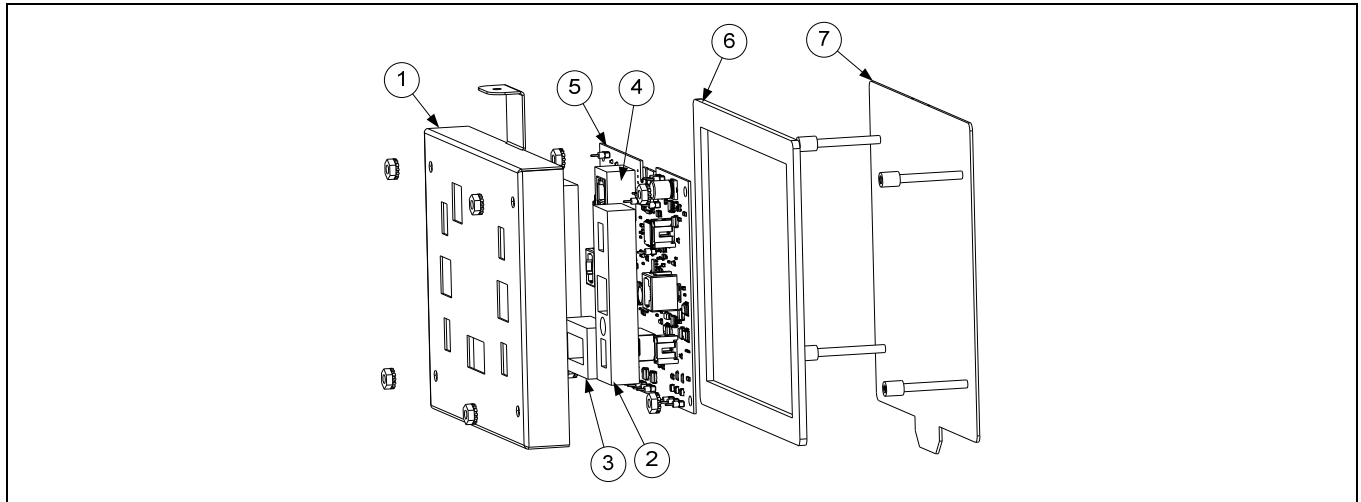
### 1.5.3 FIB (Filter Interface Board) Auto Top Off / Filter Box Components



| ITEM | PART #    | COMPONENT   |
|------|-----------|---|
|      | 1087716   | Box Assembly, ATO/FIB Filter  |
| √ 1  | 1087513SP | Board, FIB w/ Software <b>General Market / Burger King</b>  |
|      | 1087535SP | Board, FIB w/ Software <b>Taco Bell</b>   |
| √ 2  | 8075855   | Power Supply, 24VDC 130W ATO, Actuators, Filter Pump, Top Off Pump                                      |
| √ 3  | 8075974   | Power Supply, 24VDC, 15W for KCCM SUI board   |
| *    | 1087247   | Holder Assembly, Fuse with Leads (used with the KCCM SUI Board)   |
| √ 4  | 8076148   | PCB, Assy FQ4000 KCCM/SUI   |
| √ 5  | 8075570   | Fuse, 250VAC 3.5A Fast Acting   |
| 6    | 8071321   | Holder, Fuse  |
| 7    | 8160217   | Insulation, Terminal Block Paper  |
| 8    | 8101164   | Block, One-Piece Screwless Terminal   |
| 9    | 8076240   | Harness, Bulk Oil/ATO/FIB (J1 (30-pin) FIB to illustrated connectors inside FIB Box)                    |
| 10   | 8075967   | Coupler, 8PBC to 8PBC   |
| 11   | 8075970   | Cap, Dust   |
| 12   | 8075975   | Antenna   |
| 13   | 8076225   | Cable, U. FL to RP-SMA Bulkhead (attaches to Item 4)  |
| 14   | 8075969   | Cable, USB Receptacle Mount (USB end attaches to Item 4)  |
| 15   | 8071926   | Bushing, .875 Split   |
| 16   | 1087715   | Box, Assembly   |
| 17   | 2401658   | Cover, ATO/Filter Box   |
|      |           | <b>See Wiring Diagrams in FQG30-T Service Manual for cable locations</b>                                |
| *    | 8075632   | Terminator, CAN End Communication RJ11 (FIB J4)   |
| *    | 8075977   | Cable, RJ45 Cat5E 7.87" (From Item 10 to Item 4)  |
| *    | 8076242   | Harness, KCCM SUI Communication/Power (RJ45 item #4 to J4 FIB and to item #3)                           |
| *    | 8076241   | Harness, Power Supply (From item #2 to Item 8)  |
| *    | 8075551   | Cable, C-Bus Right SIB (J7) to FIB (Filtration Interface Board) (J3)                                    |
| *    | 8075810   | Cable, FIB to VIB Actuator Power (used from FIB item #1 (J2) to VIB (J4) and from VIB (J3) to VIB (J4)) |

\* Not illustrated √ Recommended parts.

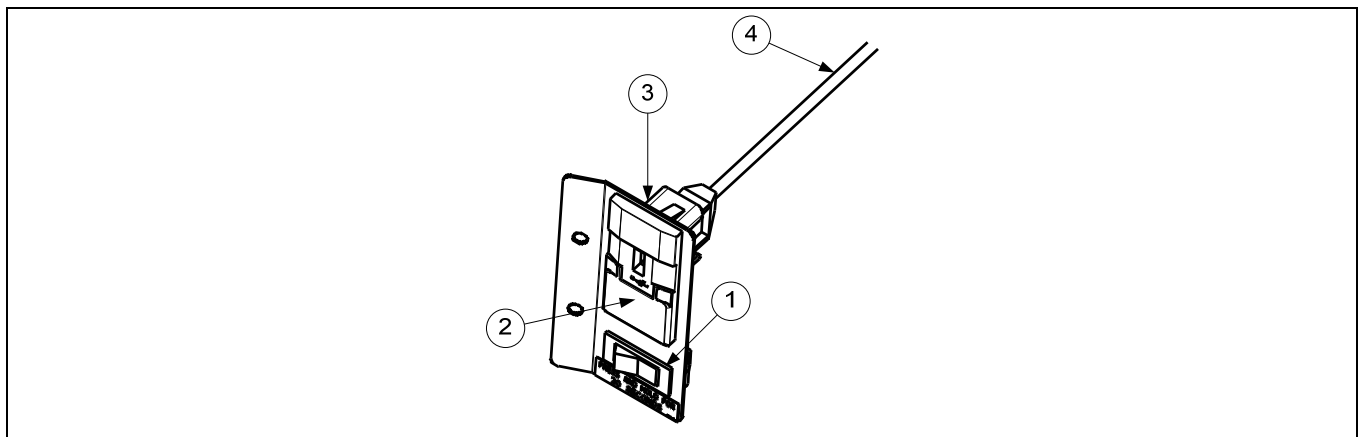
### 1.5.4 VIB (Valve Interface Board) Components



| ITEM | PART #    | COMPONENT                       |
|------|-----------|---------------------------------|
| √    | 1087537   | VIB Board Assembly Taco Bell    |
| 1    | 8242346   | Cover, VIB Board Housing        |
| 2    | 8161015   | Gasket, Actuator Power VIB      |
| 3    | 8161013   | Gasket, 20 pin VIB Connector    |
| 4    | 8161014   | Gasket, P-Bus VIB Connector     |
| 5    | 1087534SP | Board, VIB with SW              |
| 6    | 8160820   | Seal, Linear Actuator Board     |
| 7    | 1087280   | Panel, Assy VIB Box Bottom Stud |

√ Recommended parts.

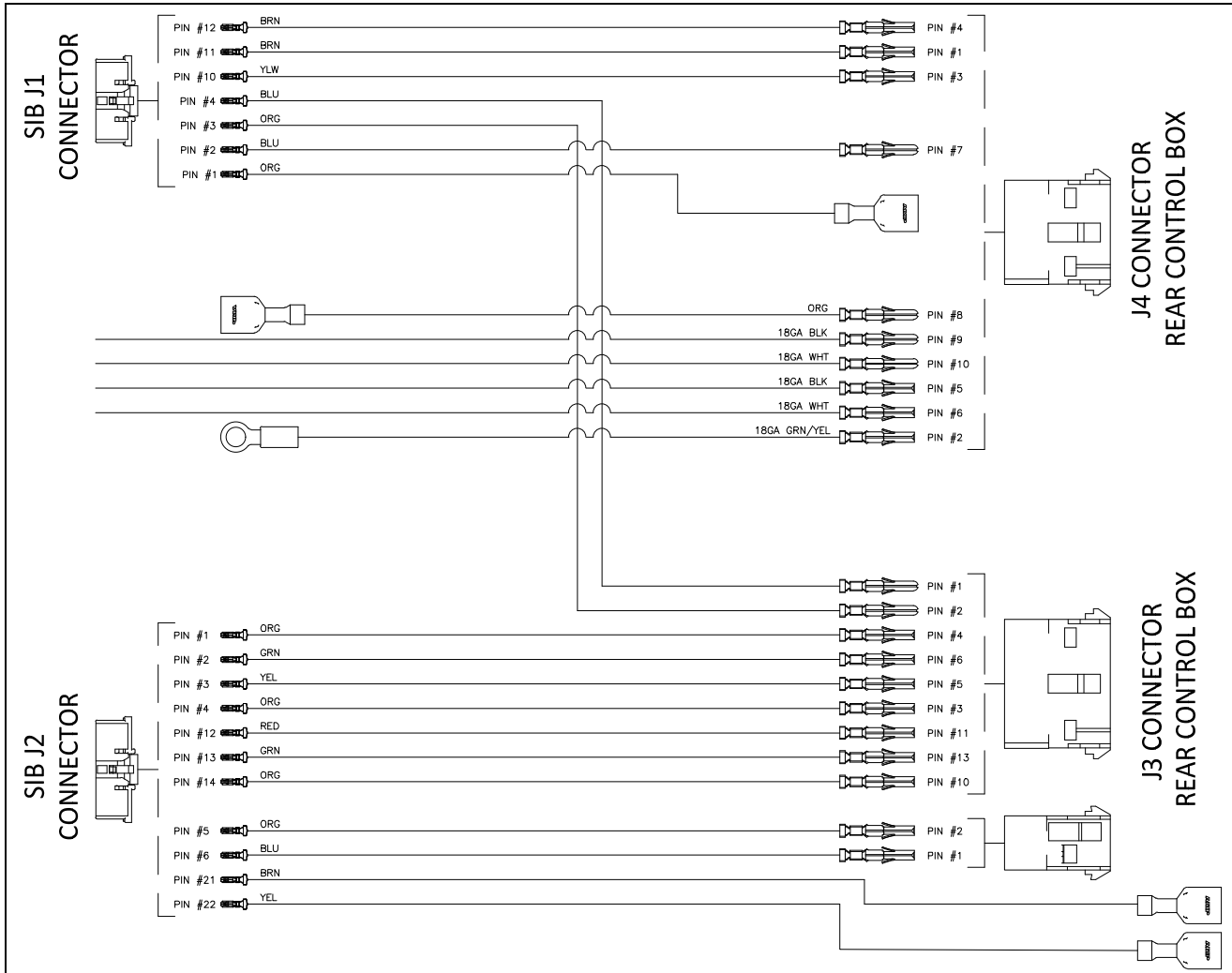
### 1.5.5 Power Reset Switch and USB Connector



| ITEM | PART #  | COMPONENT                             |
|------|---------|---------------------------------------|
|      | 1087802 | Bracket Assy, USB Mounting FQ4000 Gas |
| 1    | 8072659 | Switch                                |
| 2    | 8074989 | Bezel, USB Port                       |
| 3    | 2207520 | Plate, Backing USB Bezel              |
| 4    | 8074990 | Cable, USB                            |

## 1.6 Wiring

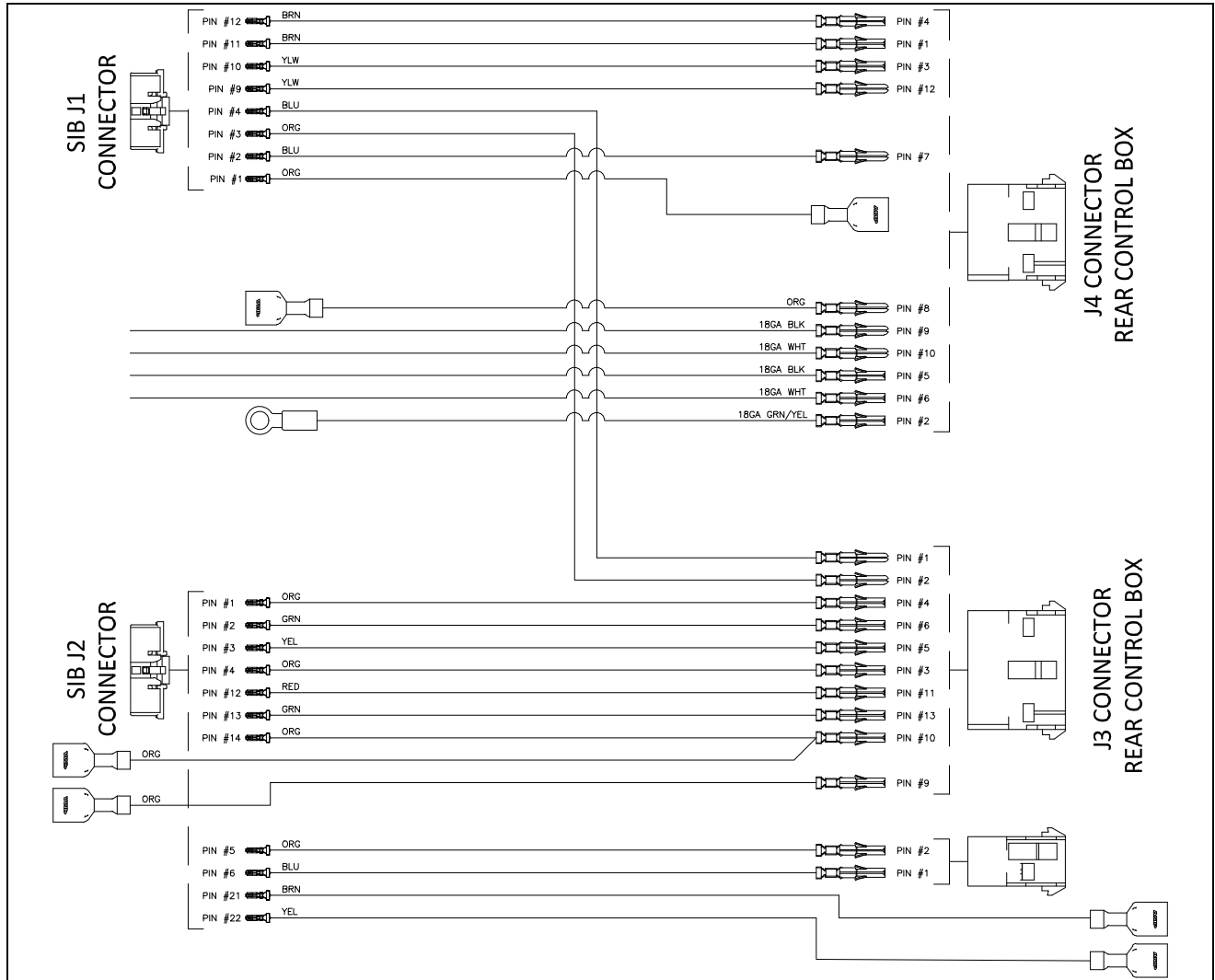
### 1.6.1 Wiring Harness Full Vat - SIB to Rear of Component Box (Fryer w/out OIB)



| ITEM | PART #  | COMPONENT                             |
|------|---------|---------------------------------------|
|      | 8076243 | Harness, Controls FQ4000 Gas Full Vat |

See the FQG30-T Service Manual for wiring diagram.

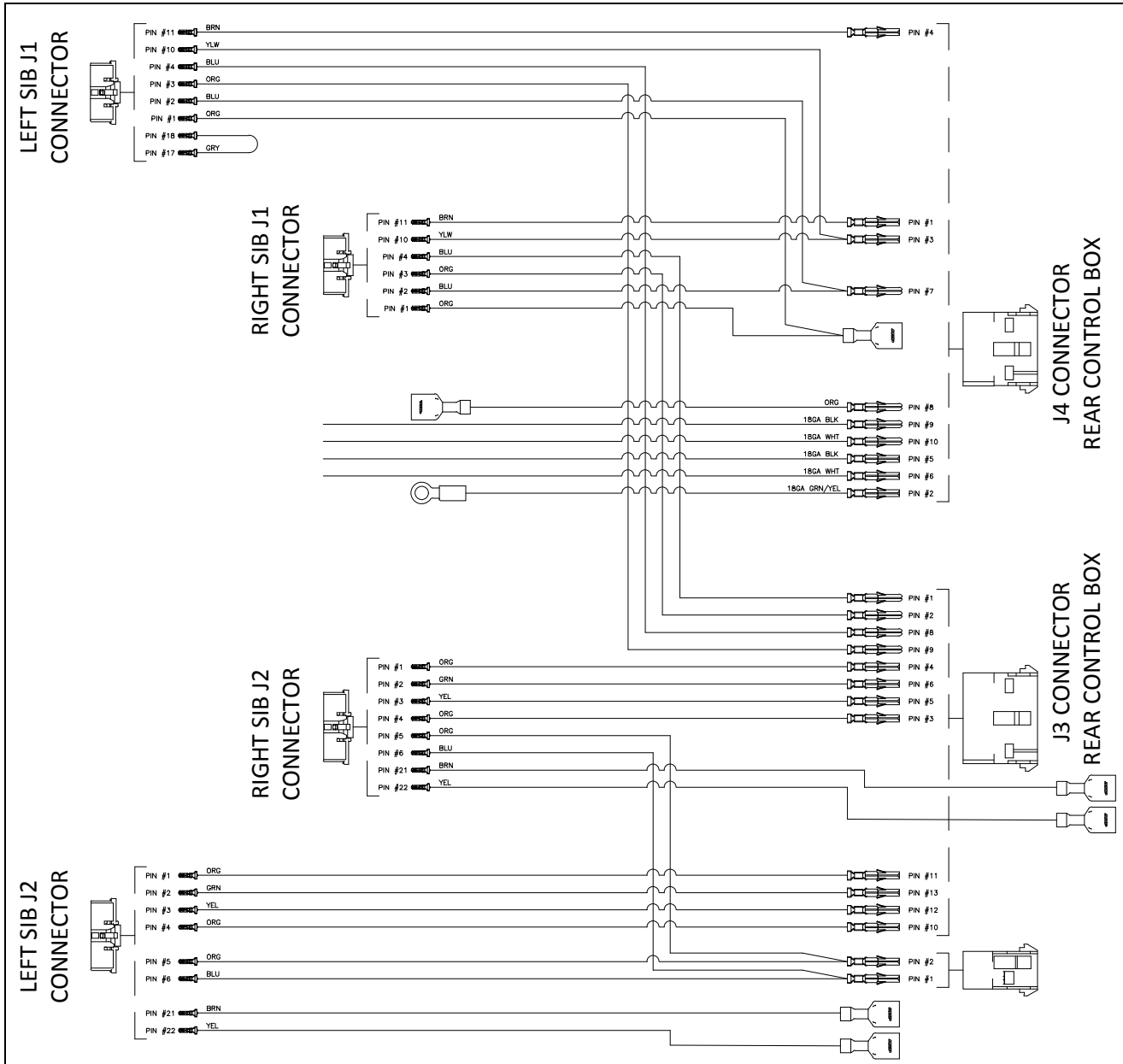
## 1.6.2 Wiring Harness Full Vat - SIB to Rear of Component Box (Fryer with OIB)



| ITEM | PART #  | COMPONENT                            |
|------|---------|--------------------------------------|
|      | 8076364 | Harness, Controls LOV-T Gas Full Vat |

See the FQG30-T Service Manual for wiring diagram.

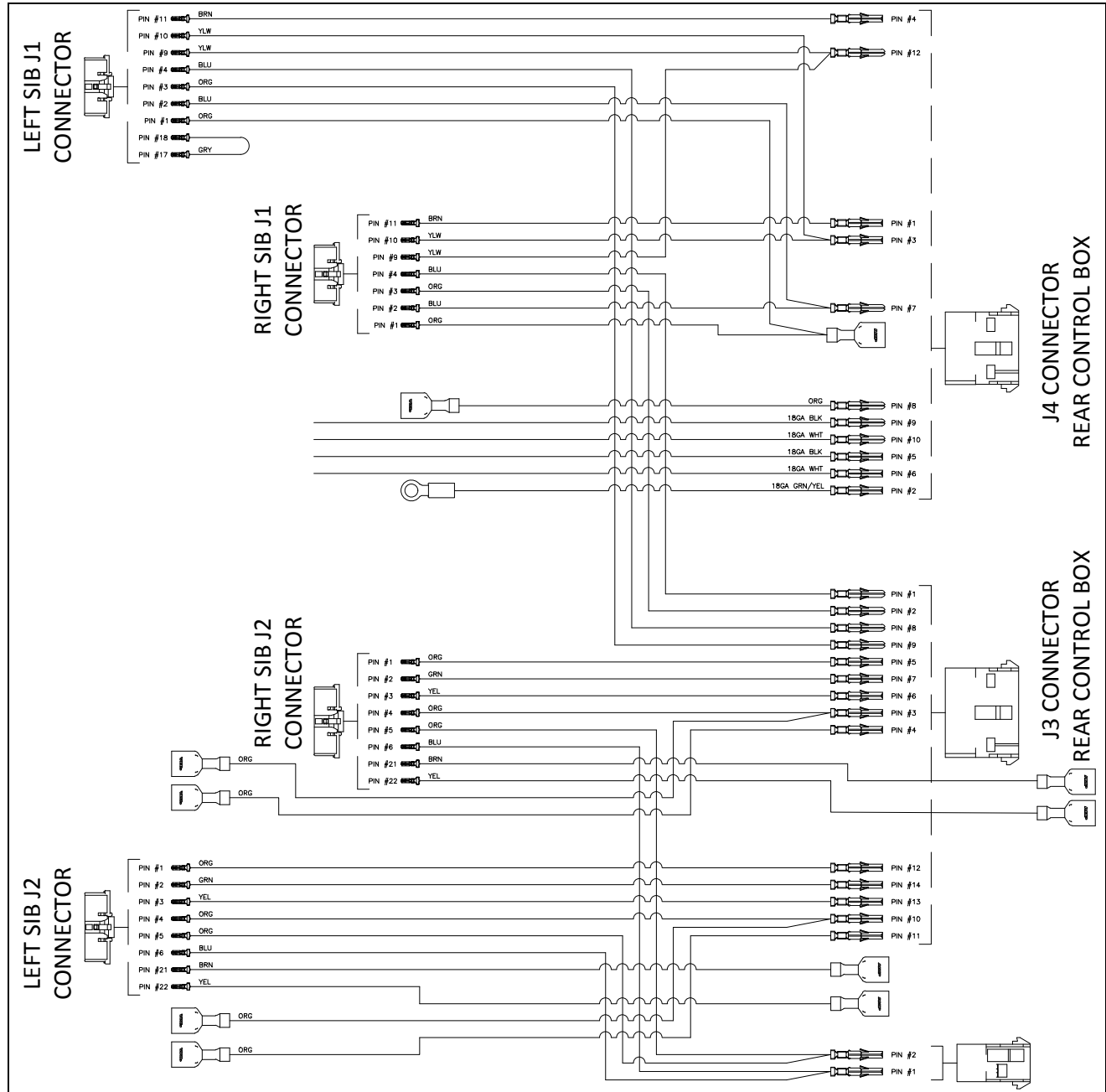
### 1.6.3 Wiring Harness Dual Vat - SIB to Rear of Component Box (Fryer w/out OIB)



| ITEM | PART #  | COMPONENT                             |
|------|---------|---------------------------------------|
|      | 8076244 | Harness, Controls FQ4000 Gas Dual Vat |

See the FQG30-T Service Manual for wiring diagram.

### 1.6.4 Wiring Harness Dual Vat - SIB to Rear of Component Box (Fryer with OIB)

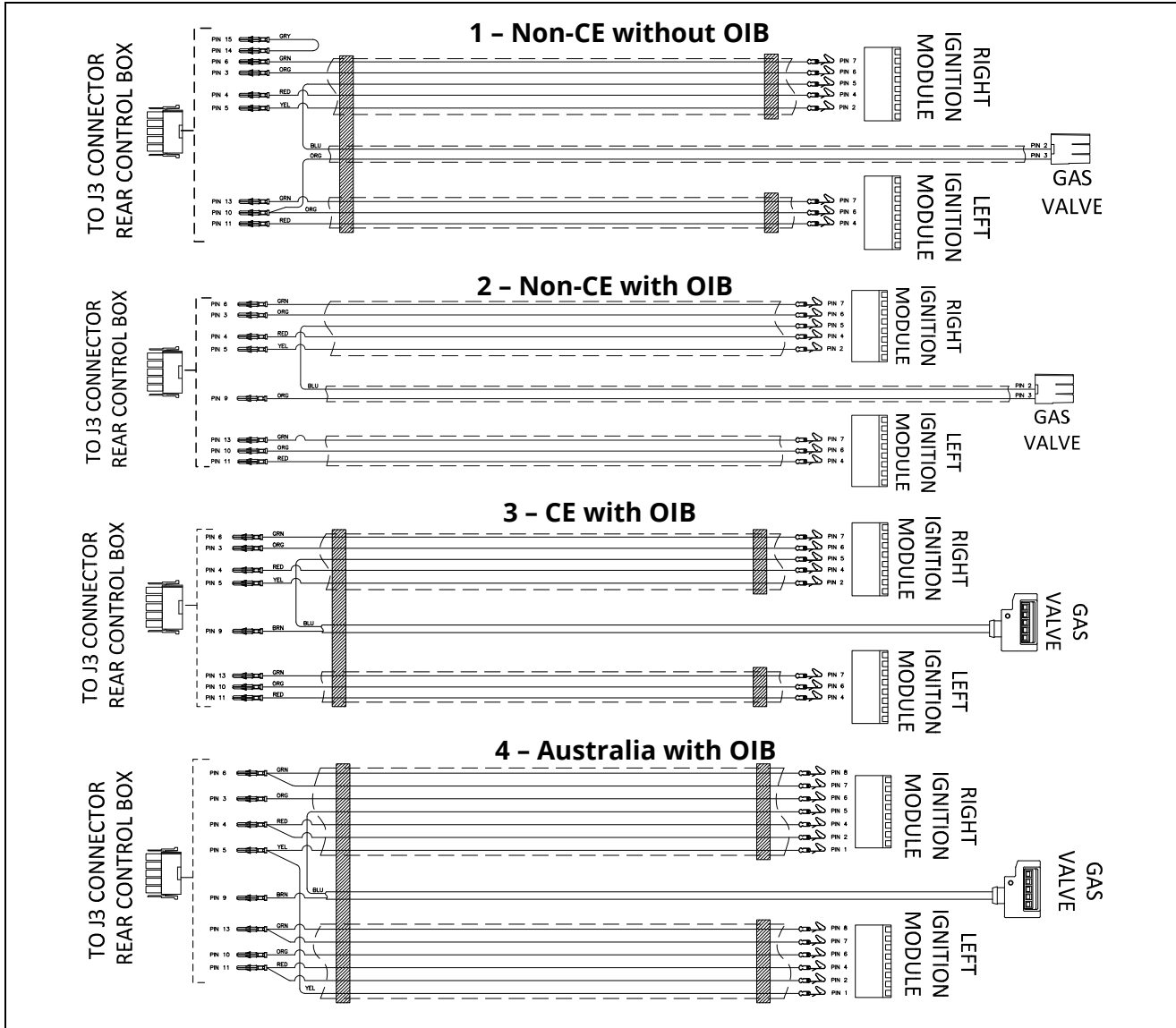


| ITEM | PART #  | COMPONENT                            |
|------|---------|--------------------------------------|
|      | 8076365 | Harness, Controls LOV-T Gas Dual Vat |

See the FQG30-T Service Manual for wiring diagram.



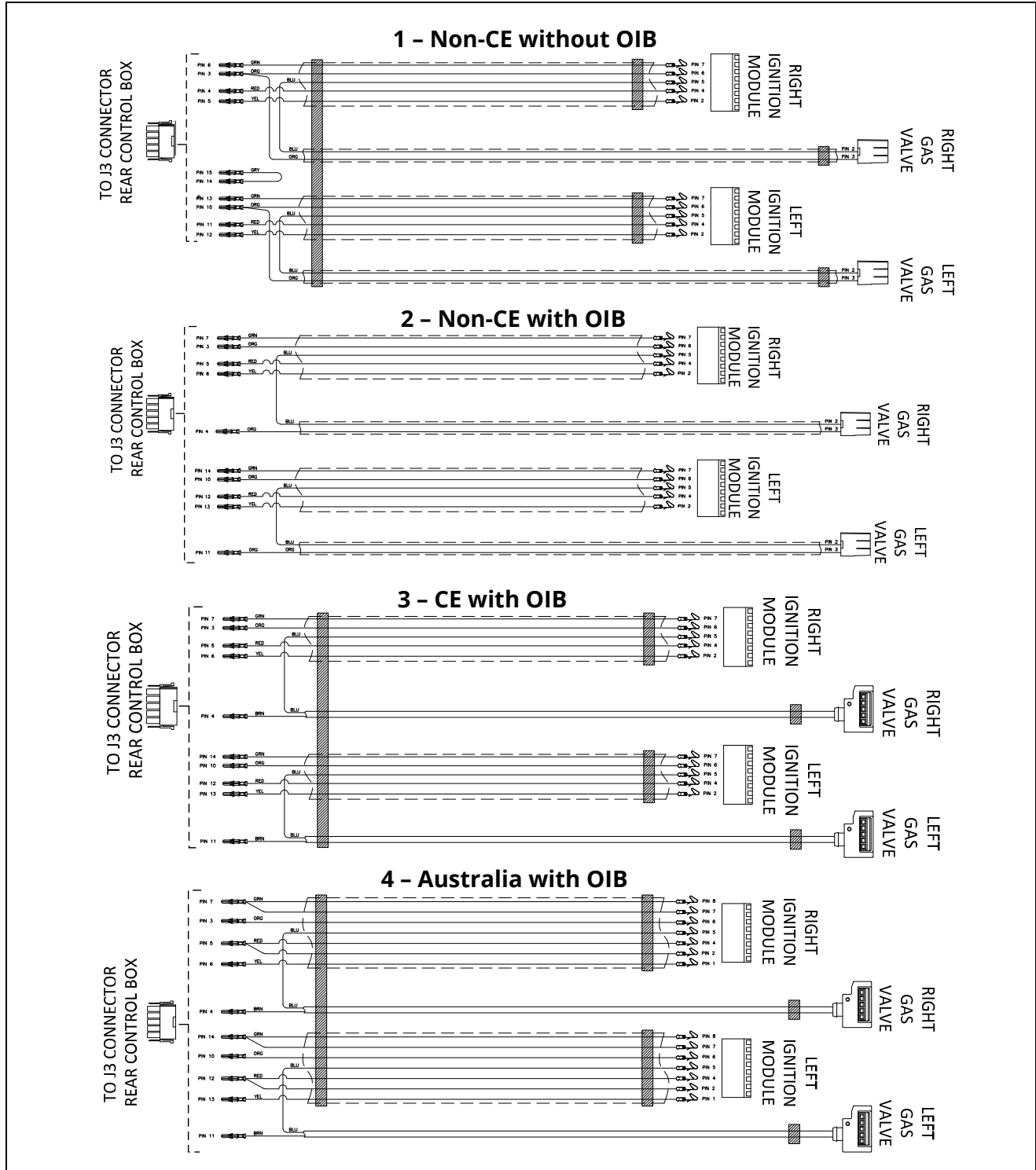
## 1.6.5 Ignition Wiring Harness Full Vat - Control Box to Components



| ITEM | PART #  | COMPONENT   |
|------|---------|---|
| 1    | 8076247 | Harness, Ignition/Controls Wiring Gas Full Vat Non-CE without OIB |
| 2    | 8076366 | Harness, Ignition/Controls Wiring Gas Full Vat Non-CE with OIB    |
| 3    | 8076377 | Harness, Ignition/Controls Wiring Gas Full Vat CE with OIB        |
| 4    | 8076429 | Harness, Ignition/Controls Wiring Gas Full Vat Australia with OIB |

**NOTE:** See the FQG30-T Service Manual for wiring diagrams.

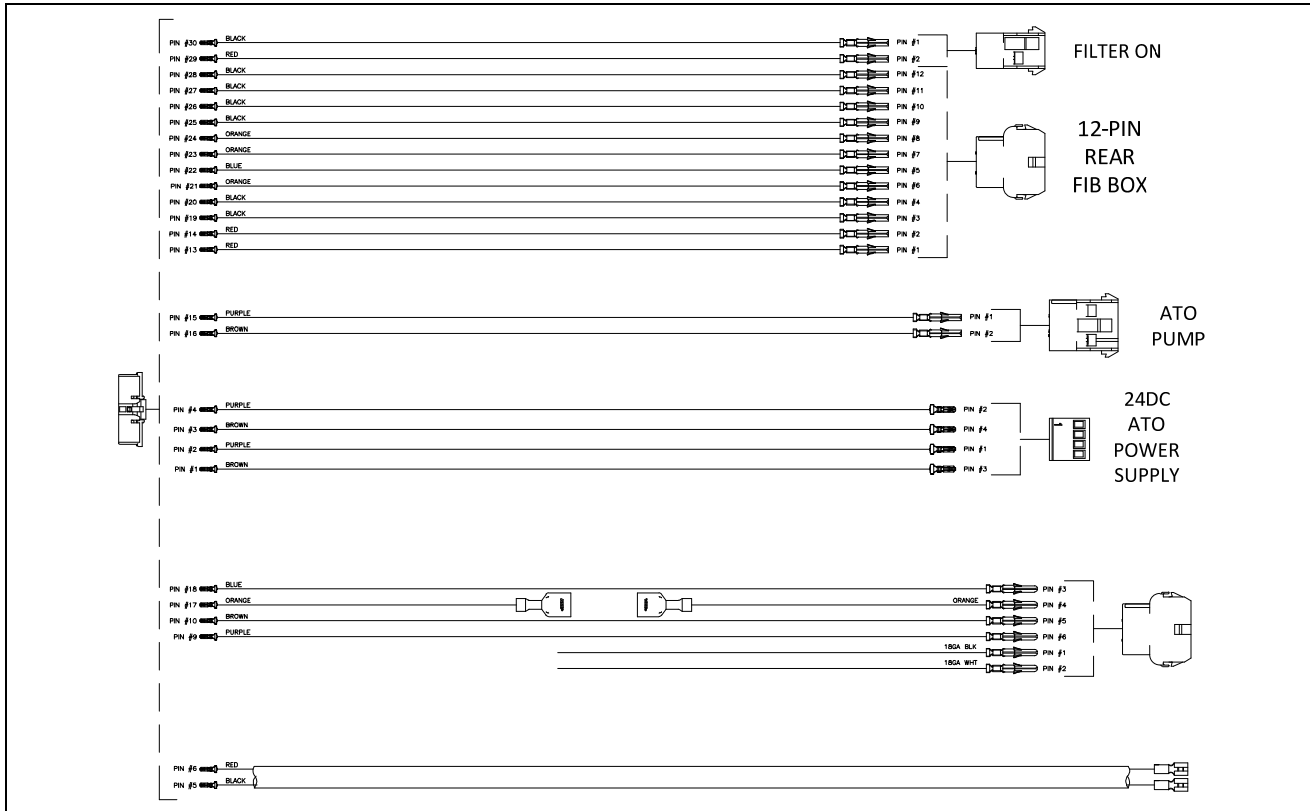
## 1.6.6 Ignition Wiring Harness Dual Vat - Control Box to Components



| ITEM | PART #  | COMPONENT   |
|------|---------|---|
| 1    | 8076248 | Harness, Ignition/Controls Wiring Gas Dual Vat Non-CE without OIB |
| 2    | 8076367 | Harness, Ignition/Controls Wiring Gas Dual Vat Non-CE with OIB    |
| 3    | 8076368 | Harness, Ignition/Controls Wiring Gas Dual Vat CE with OIB        |
| 4    | 8076430 | Harness, Ignition/Controls Wiring Gas Dual Vat Australia with OIB |

**NOTE:** See the FQG30-T Service Manual for wiring diagrams.

## 1.6.7 FIB Box Wiring Harness



| ITEM | PART #  | COMPONENT                      |
|------|---------|--------------------------------|
| 1    | 8076240 | Harness, Bulk Oil, Topoff /FIB |

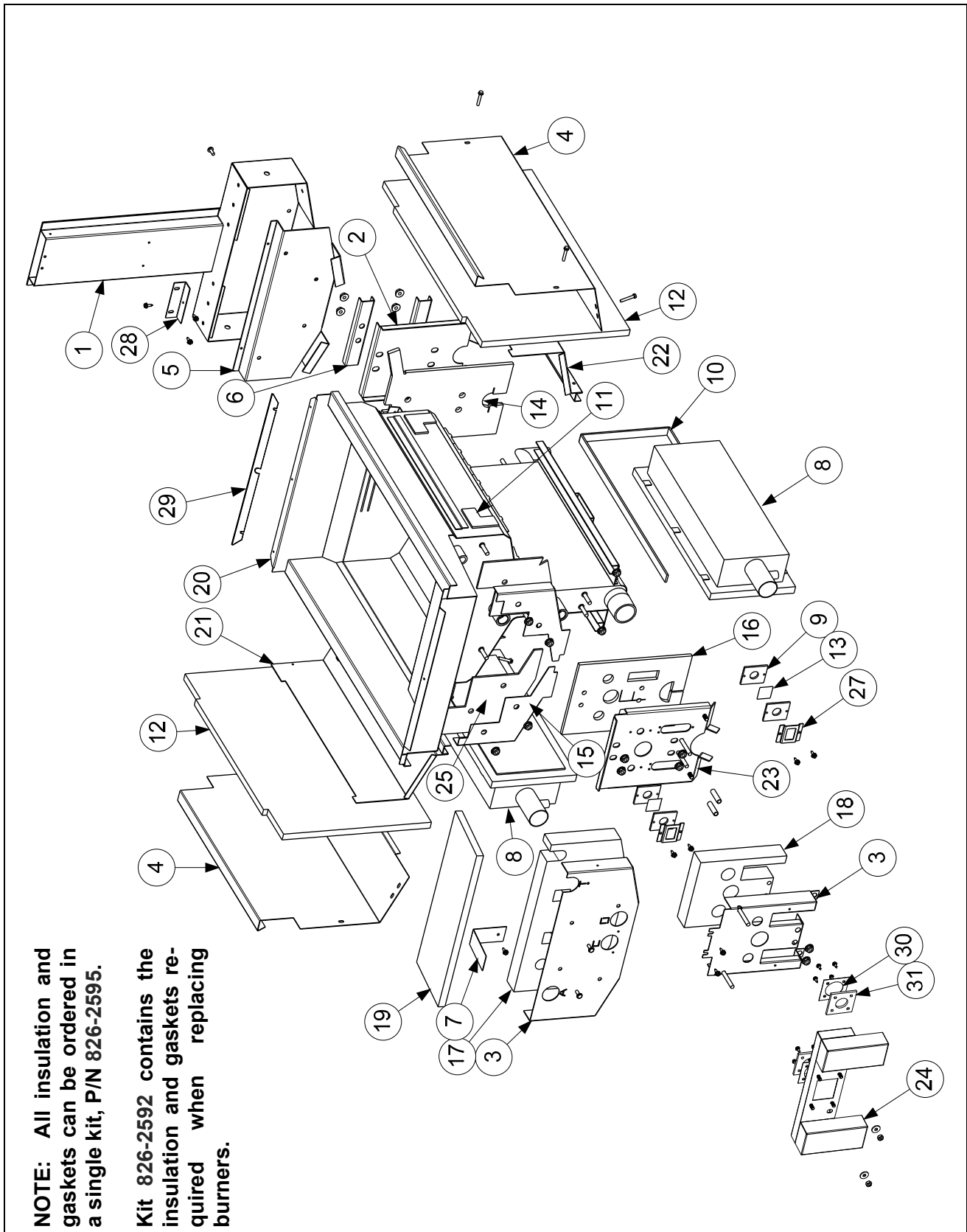
## 1.6.8 Miscellaneous Wiring Harnesses and Cord Sets

| PART #    | COMPONENT  |
|-----------|--|
| 8076245   | Harness, Vat AC Power 60" (J4 (12-pin) Rear Control Box - C1 (6-pin) Transformer Box)        |
| 8076249   | Harness, Filter/ATO Power/Control 24" (C5 (6-pin) Rear FIB Box - C5 (6-pin) Transformer Box) |
| 8076246   | Harness, Basketlift 72" (J4 Rear Control Box - 12-pin Basketlift)                            |
| 8069678SP | Plug Assembly, CE Gas Valve  |
| 8067742SP | Cord set, 120V Fryer and Motor with Ring Terminals 68"                                       |
| 1060516   | Cord set, 220-250V Non-CE/Export Fryer and Motor with Ring Terminals 68"                     |

**NOTE: See the FQG30-T Service Manual for wiring diagrams.**

## 1.7 Frypots and Associated Components

### 1.7.1 Full-Vat Frypot Components



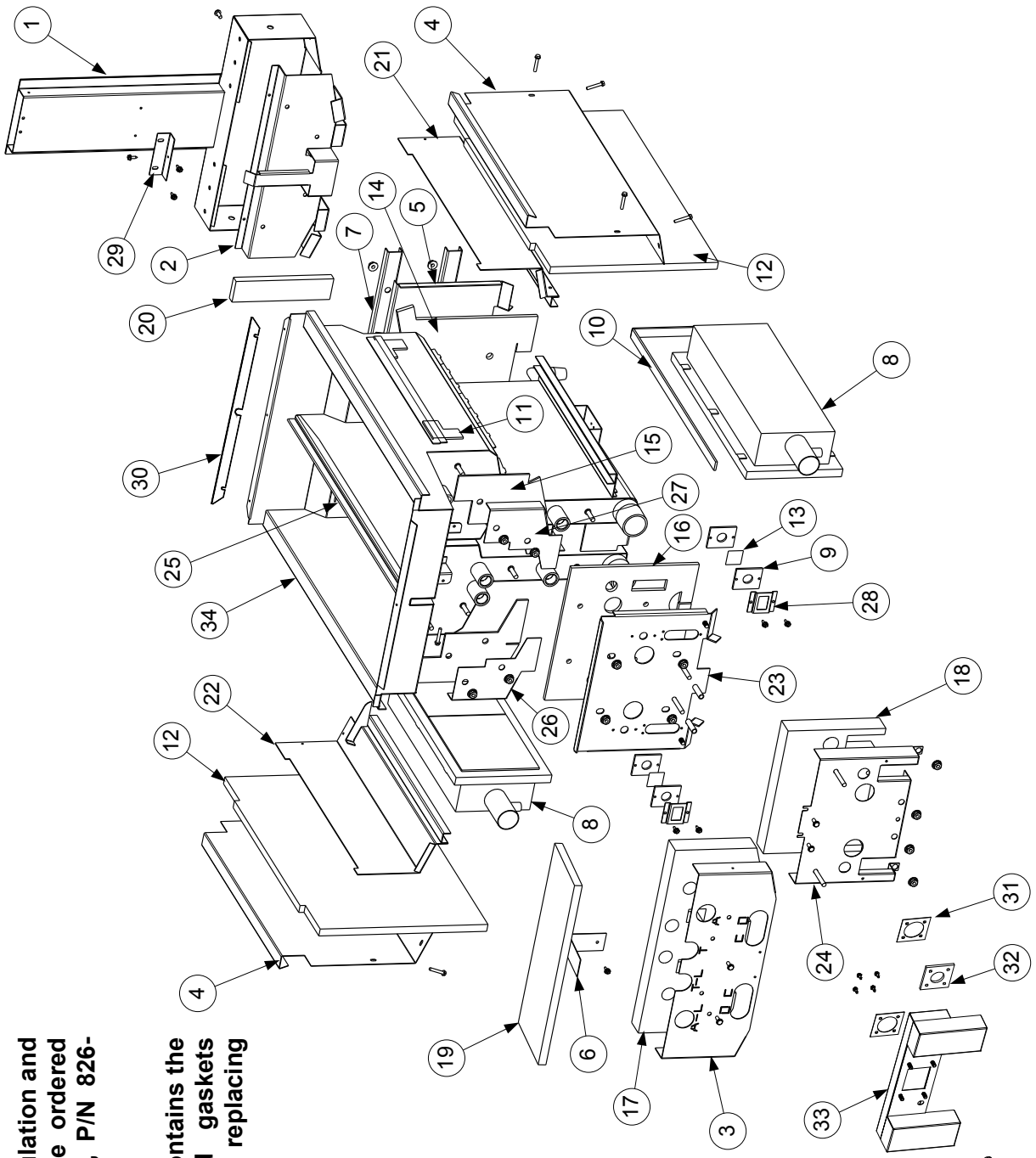
### 1.7.1 Full-Vat Frypot Components cont.

| ITEM | PART #    | COMPONENT  |
|------|-----------|--|
|      | 1081752SP | Frypot Assembly Full-Vat (NAT/PRO)   |
|      | 8262595   | Insulation Kit, Complete Full-Vat  |
|      | 8262592   | Insulation Kit, Burner Full-Vat  |
| 1    | 1080925   | Flue Assembly, Full-Vat  |
| 2    | 8238175   | Back, Lower Full-Vat Combustion Chamber  |
| 3    | 2206529   | Retainer, Full-Vat Upper Insulation (modified from shown, now one piece)         |
| 4    | 2207834   | Retainer, Outer Frypot   |
| 5    | 2306960   | Plate, FV Collector Mounting   |
| 6    | 2202851   | Brace, FV Rear Insulation  |
| 7    | 2202920   | Brace, Foam Deck Insulation  |
| √ 8  | 8103435   | Burner, Universal Replacement  |
| 9    | 8120356   | Insulation, Burner Sight Glass   |
| 10   | 8160900   | Insulation, Burner   |
| 11   | 8120706   | Insulation, Upper Burner Rail  |
| 12   | 8121029   | Insulation, Combustion Chamber Side  |
| 13   | 8140048SP | Glass, Burner Sight  |
| 14   | 8160837   | Insulation, FV Rear Lower  |
| 15   | 8160731   | Insulation, FV LH/RH Front Seal  |
| 16   | 8160976   | Insulation, FV Lower Inner Front   |
| 17   | 8160733   | Insulation, FV Front Upper   |
| 18   | 8160978   | Insulation, FV Outer Front   |
| 19   | 8160746   | Insulation, Foam Deck  |
| 20   | 8238932   | Frypot, FV GL30  |
| 21   | 8238193   | Retainer, FV LH Upper Burner   |
| 22   | 8238194   | Retainer, FV RH Upper Burner   |
| 23   | 8238571   | Retainer, FV Front Combustion Insulation   |
| 24   | 8238574   | Plenum, Full-Vat ( <b>use 8238590 for CE units and for Export Non-CE units</b> ) |
| 25   | 8242164   | Front Upper Seal Weldment, FV LH   |
| 26   | 8242165   | Front Upper Seal Weldment, FV RH   |
| 27   | 9001031   | Retainer, Burner Sight Glass   |
| 28   | 9300818   | Bracket, Flue to Pot   |
| 29   | 9004253   | Strip, Fluecap Retainer  |
| 30   | 9001049   | Retainer, Plenum Gasket  |
| 31   | 8160057   | Gasket, Plenum   |
| *    | 8160981   | Gasket, Ignitor  |
| *    | 8161122   | Seal, Frypot Plenum Mounting   |
| *    | 8090390   | Elbow, 90° Male 1/8" to 3/16" (used with Pressure Switches)                      |
| *    | 8161049   | Gasket, Plenum/Blower (used between plenum and blower)                           |
| *    | 9102474   | Pot-to-Pot Gap Clip  |

\* Not illustrated.

√ Recommended parts.

## 1.7.2 Dual-Vat Frypot Components



**NOTE:** All insulation and gaskets can be ordered in a single kit, P/N 826-2596.

Kit 826-2593 contains the insulation and gaskets required when replacing burners.

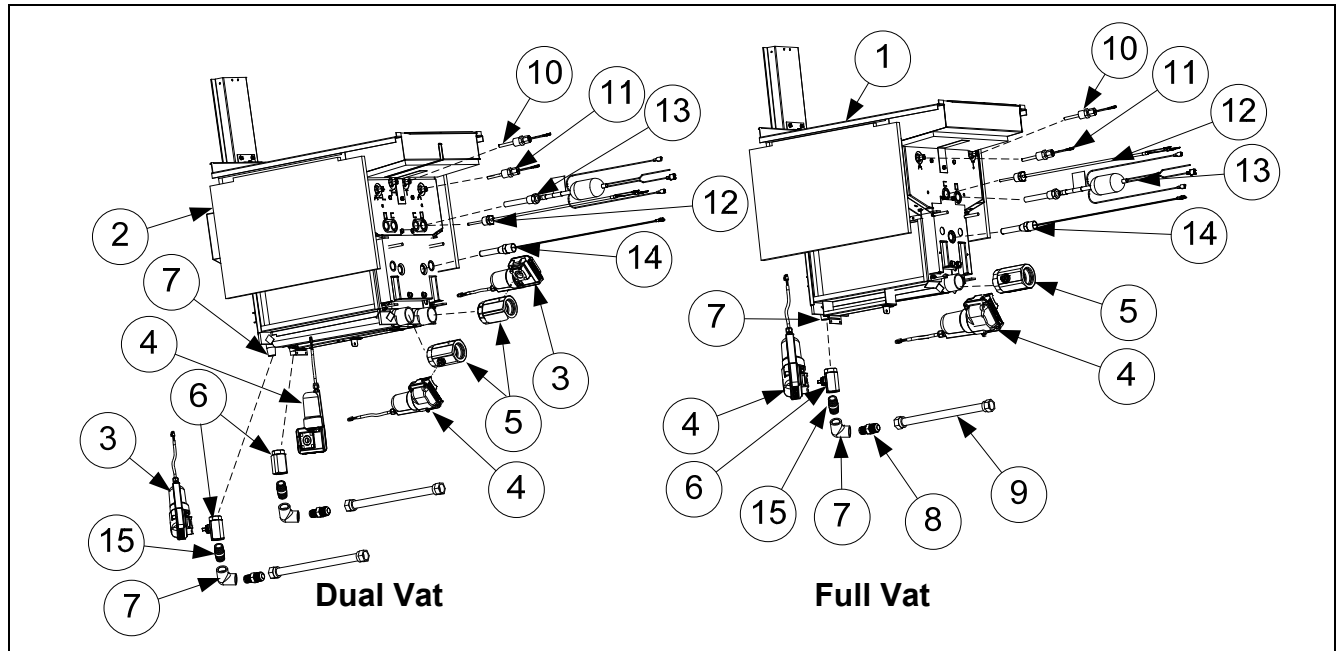
## 1.7.2 Dual-Vat Frypot Components cont.

| ITEM | PART #    | COMPONENT  |
|------|-----------|--|
| *    | 1081753SP | Frypot Assembly Dual-Vat (NAT/PRO)   |
| *    | 8262596   | Insulation Kit, Complete Dual-Vat  |
| √ *  | 8262593   | Insulation Kit, Burner Dual-Vat  |
| 1    | 1080926   | Flue Assembly, Dual-Vat  |
| 2    | 1067960   | Plate Assembly, Dual-Vat Collector   |
| 3    | 2206530   | Retainer, Dual-Vat Upper Insulation  |
| 4    | 2207835   | Retainer, Dual-Vat Outer Frypot  |
| 5    | 8238176   | Back, Dual-Vat Lower Combustion Chamber  |
| 6    | 2202920   | Brace, Foam Deck Insulation  |
| 7    | 2202972   | Brace, Dual-Vat Rear Insulation  |
| √ 8  | 8103435   | Burner, Universal Replacement  |
| 9    | 8120356   | Insulation, Burner Sight Glass   |
| 10   | 8160900   | Insulation, Burner   |
| 11   | 8120706   | Insulation, Upper Burner Rail  |
| 12   | 8121029   | Insulation, Combustion Chamber Side  |
| 13   | 8140048SP | Glass, Burner Sight  |
| 14   | 8160838   | Insulation, Dual-Vat Rear Lower  |
| 15   | 8160741   | Insulation, Dual-Vat LH/RH Front Seal  |
| 16   | 8160977   | Insulation, Dual-Vat Lower Inner Front   |
| 17   | 8160743   | Insulation, Dual-Vat Front Upper   |
| 18   | 8160979   | Insulation, Dual-Vat Outer Front   |
| 19   | 8160746   | Insulation, Foam Deck  |
| 20   | 8120688   | Insulation, Flue Collection  |
| 21   | 8238196   | Retainer, Dual-Vat RH Upper Burner   |
| 22   | 8238195   | Retainer, Dual-Vat LH Upper Burner   |
| 23   | 8238578   | Retainer, Dual-Vat Front Insulation  |
| 24   | 8238576   | Retainer, Dual-Vat Outer Front   |
| 25   | 8241796   | Riser W/A Dual-Vat Pot   |
| 26   | 8242166   | Dual-Vat LH Upper W/A Seal   |
| 27   | 8242167   | Dual-Vat RH Upper W/A Seal   |
| 28   | 9001031   | Retainer, Sight Glass  |
| 29   | 9300818   | Bracket, Flue to Pot   |
| 30   | 9004253   | Strip, Fluecap Retainer  |
| 31   | 9001049   | Retainer, Plenum Gasket  |
| 32   | 8160057   | Gasket, Plenum   |
| *    | 8160981   | Gasket, Ignitor  |
| 33   | 8238573   | Plenum, Dual-Vat ( <b>use 8238589 for CE units and for Export Non-CE units</b> ) |
| *    | 8161049   | Gasket, Plenum/Blower (used between plenum and blower)                           |
| *    | 8161122   | Seal, Frypot Plenum Mounting   |
| *    | 8090390   | Elbow, 90° Male 1/8" to 3/16" (used with Pressure Switches)                      |
| 34   | 8238942   | Frypot, Dual-Vat GL30  |
| *    | 9102474   | Pot-to-Pot Gap Clip  |

\* Not illustrated.

√ Recommended parts.

### 1.7.3 Frypot Assemblies and Associated Parts



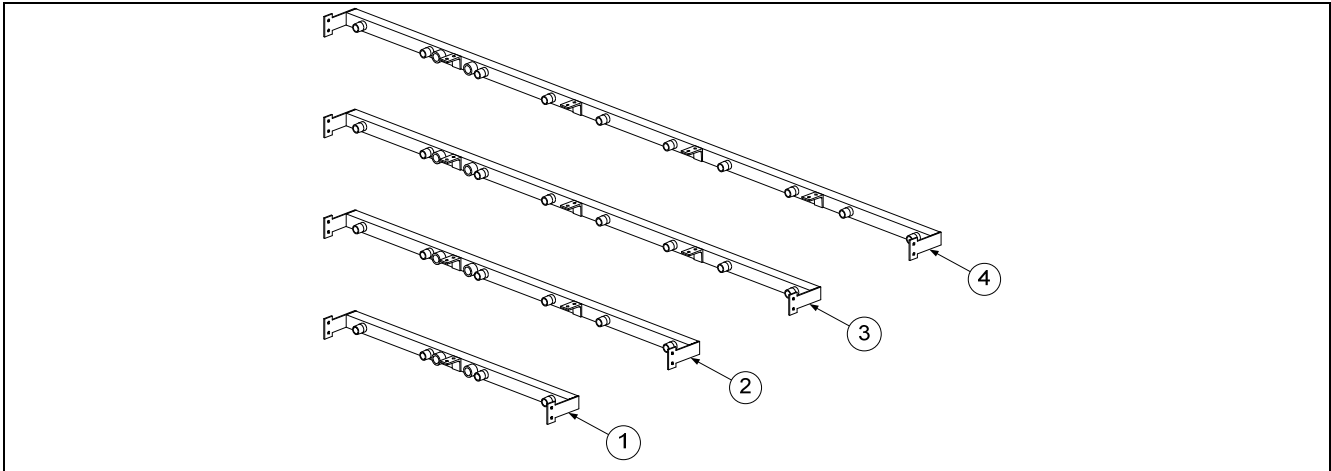
| ITEM | PART #    | COMPONENT   |
|------|-----------|---|
| 1    | 1081752SP | Frypot Assembly, Full-Vat Natural/Propane   |
| 2    | 1081753SP | Frypot Assembly, Dual-Vat Natural/Propane   |
| ✓ 3  | 8075809   | Actuator, Rotary 24VDC (#1) Blue  |
| ✓ 4  | 8075808   | Actuator, Rotary 24VDC (#2) Black   |
| ✓ 5  | 8104353   | Valve, 1/4" NPT Drain   |
| ✓ 6  | 8103754   | Valve, 1/2" NPT Return  |
| 7    | 8130062   | Elbow, 1/2" 90°   |
| 8    | 8101668   | Adaptor, Male 5/8" OD x 1/2"  |
| 9    | 8101055   | Flexline, 5/8" OD x 11.50" Long   |
| ✓ 10 | 8263286   | Probe, ATO (Topoff) RTD Kit   |
| ✓ 11 | 8263287   | Probe, VIB (Auto Filtration) RTD Kit  |
| *    | 8130617   | Fitting, 3/16" CC x 1/4" (Compression fitting used in probe kits)                     |
| *    | 8158000   | Loctite 567, Tube 6 ML  |
| ✓ 12 | 8263285   | Probe, Temperature Cooking Kit  |
| ✓ 13 | 8076384   | Sensor Assy, Oil 120V (only in units with optional OIB sensor)                        |
|      | 8076385   | Sensor Assy, Oil 220V <b>International</b> (only in units with optional OIB sensor)   |
|      | 8076386   | Sensor Assy, Oil 230V <b>International</b> (only in units with optional OIB sensor)   |
|      | 8076387   | Sensor Assy, Oil 240V/250V <b>International</b> (only in units w/optional OIB sensor) |
| ✓ 14 | 8261177   | Thermostat Assembly, HE High-Limit 425°F/218°C Kit                                    |
| ✓ 15 | 8130022   | Nipple, 1/2" x Close NPT  |

\* Not illustrated.

✓ Recommended parts.



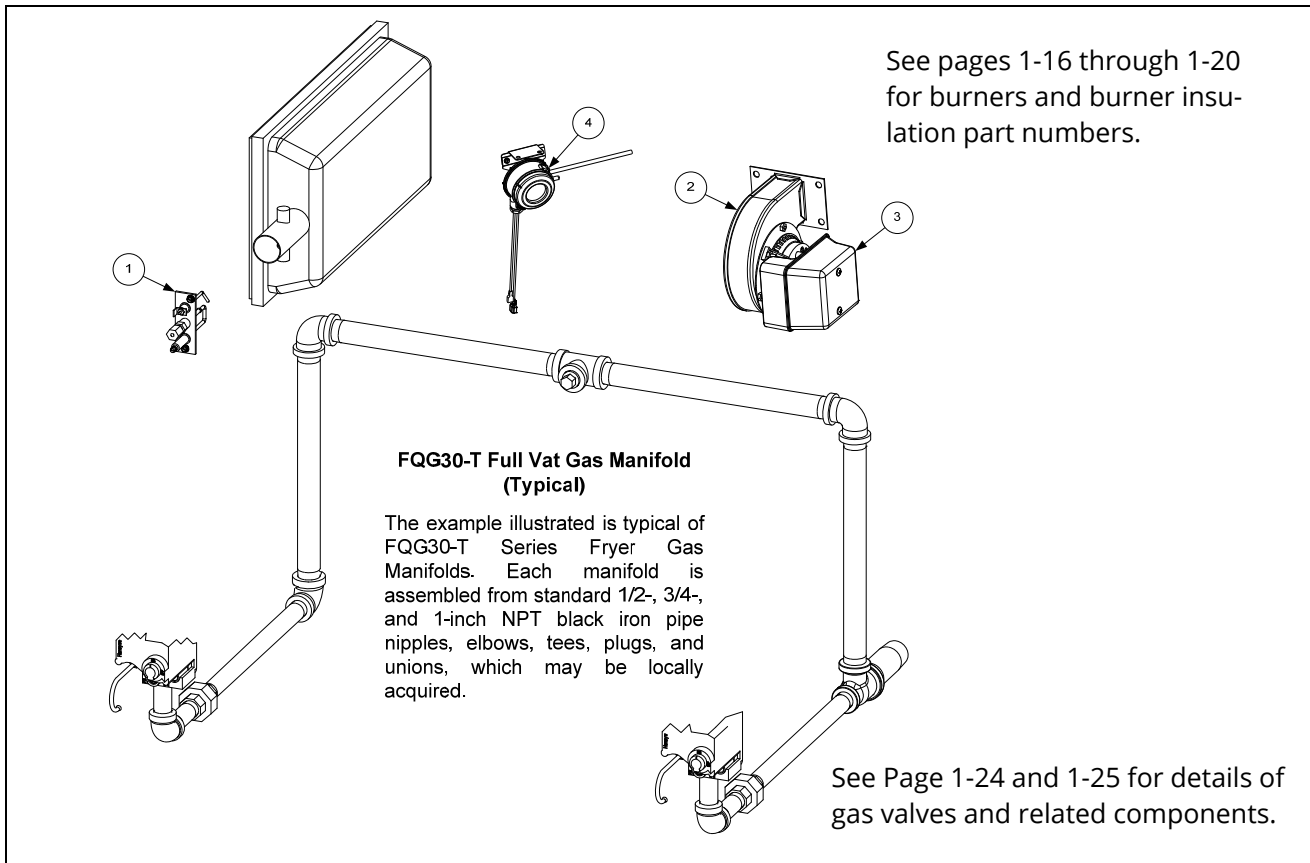
## 1.8 Oil Return Manifolds



| ITEM | PART #  | COMPONENT                     |
|------|---------|-------------------------------|
| 1    | 8103872 | Manifold, Two-Station Fryer   |
| 2    | 8103871 | Manifold, Three-Station Fryer |
| 3    | 8103873 | Manifold, Four-Station Fryer  |
| 4    | 8104138 | Manifold, Five-Station Fryer  |
| *    | 8130907 | Cap, 15/16" Valve             |

\* Not illustrated

## 1.9 Gas Supply and Combustion System Components



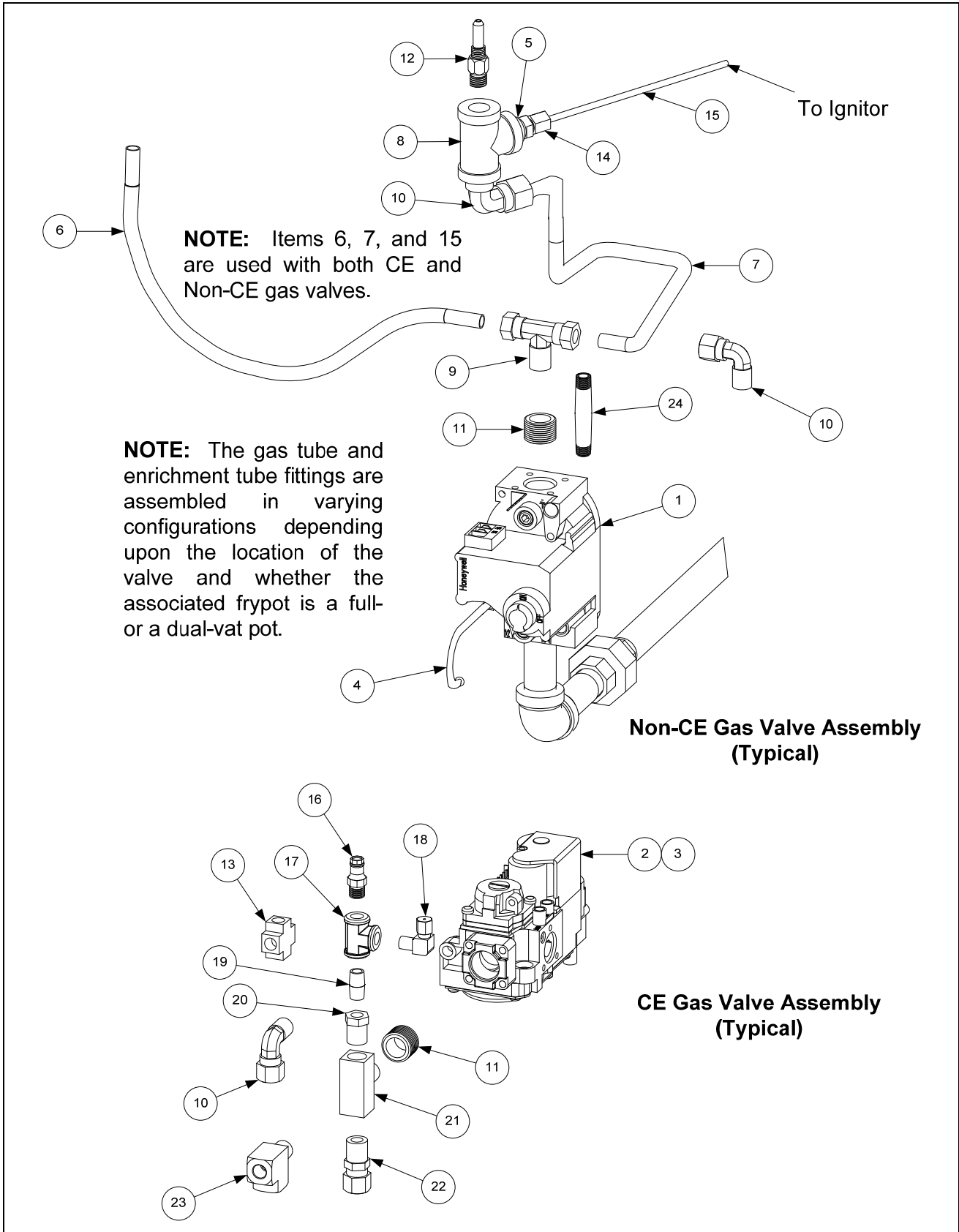
## 1.9 Gas Supply and Combustion System Components cont.

| ITEM | PART #    | COMPONENT  |
|------|-----------|--|
| √ 1  |           | Ignitor  |
|      | 8263549   | Natural Gas (G20, G25) (includes gasket 8160981, which may be ordered separately and enrichment tubes) |
|      | 8263552   | Propane (G30, G31) (includes gasket 8160981, which may be ordered separately and enrichment tubes)     |
| √ 2  |           | Blower Assembly, Combustion Air (includes harness and Item 3)  |
|      | 1062997SP | 115V 50/60 Hz (Right)  |
|      | 1062999SP | 100V 50/60 Hz (Right)  |
|      | 1083307SP | 220V 60 Hz (Right)   |
|      | 1062998SP | 208-240V 50/60 Hz (Right) Non-CE International   |
|      | 1088421SP | 230V 50Hz CE FV Australia  |
|      | 1088422SP | 230V 50Hz (Right) CE DV Australia  |
|      | 1063001SP | 230V 50/60 Hz CE (Right) CE (Wide Body)  |
| *    | 8161049   | Gasket, Plenum/Blower (used between plenum and blower)   |
| 3    | 8160554   | Cover, Blower Motor (component of all blowers listed above)  |
| *    | 8068806SP | Harness Assembly, Blower Motor (component of all blowers listed above)                                 |
| √ 4  | 1083346   | Switch, Air Pressure Assembly FV (8122226 switch alone) CE and Export                                  |
| √    | 1081455SP | Switch, Air Pressure Assembly DV (8122141 switch alone) CE and Export                                  |
| √    | 1083542   | Switch, Air Pressure Assembly FV (8122226 switch alone) Australia                                      |
| √    | 1083541   | Switch, Air Pressure Assembly DV (8122141 switch alone) Australia                                      |
|      |           | Gas Conversion Kits  |
| *    | 8262965   | Conversion Kit, Natural Gas FV (G20, G25) to Propane/Butane (G30, G31) Non-CE                          |
| *    | 8262966   | Conversion Kit, Natural Gas DV (G20, G25) to Propane/Butane (G30, G31) Non-CE                          |
| *    | 8262967   | Conversion Kit, Propane/Butane FV (G30, G31) to Natural Gas (G20, G25) Non-CE                          |
| *    | 8262968   | Conversion Kit, Propane/Butane DV (G30, G31) to Natural Gas (G20, G25) Non-CE                          |
| *    | 8262969   | Conversion Kit, Nat Gas FV (G20, G25) to Prop/Butane (G30, G31) Aust Non-CE                            |
| *    | 8262970   | Conversion Kit, Nat Gas DV (G20, G25) to Prop/Butane (G30, G31) Aust Non-CE                            |
| *    | 8262971   | Conversion Kit, Prop/But FV (G30, G31) to Natural Gas (G20, G25) Aust Non-CE                           |
| *    | 8262972   | Conversion Kit, Prop/But DV (G30, G31) to Natural Gas (G20, G25) Aust Non-CE                           |
| *    | 8262975   | Conversion Kit, Nat Gas (G20, G25) to Prop/Butane (G30, G31) CE  |
| *    | 8262976   | Conversion Kit, Prop/Butane (G30, G31) to Natural Gas (G20, G25) CE                                    |

\* Not illustrated.

√ Recommended parts.

## 1.10 Gas Valves and Associated Components

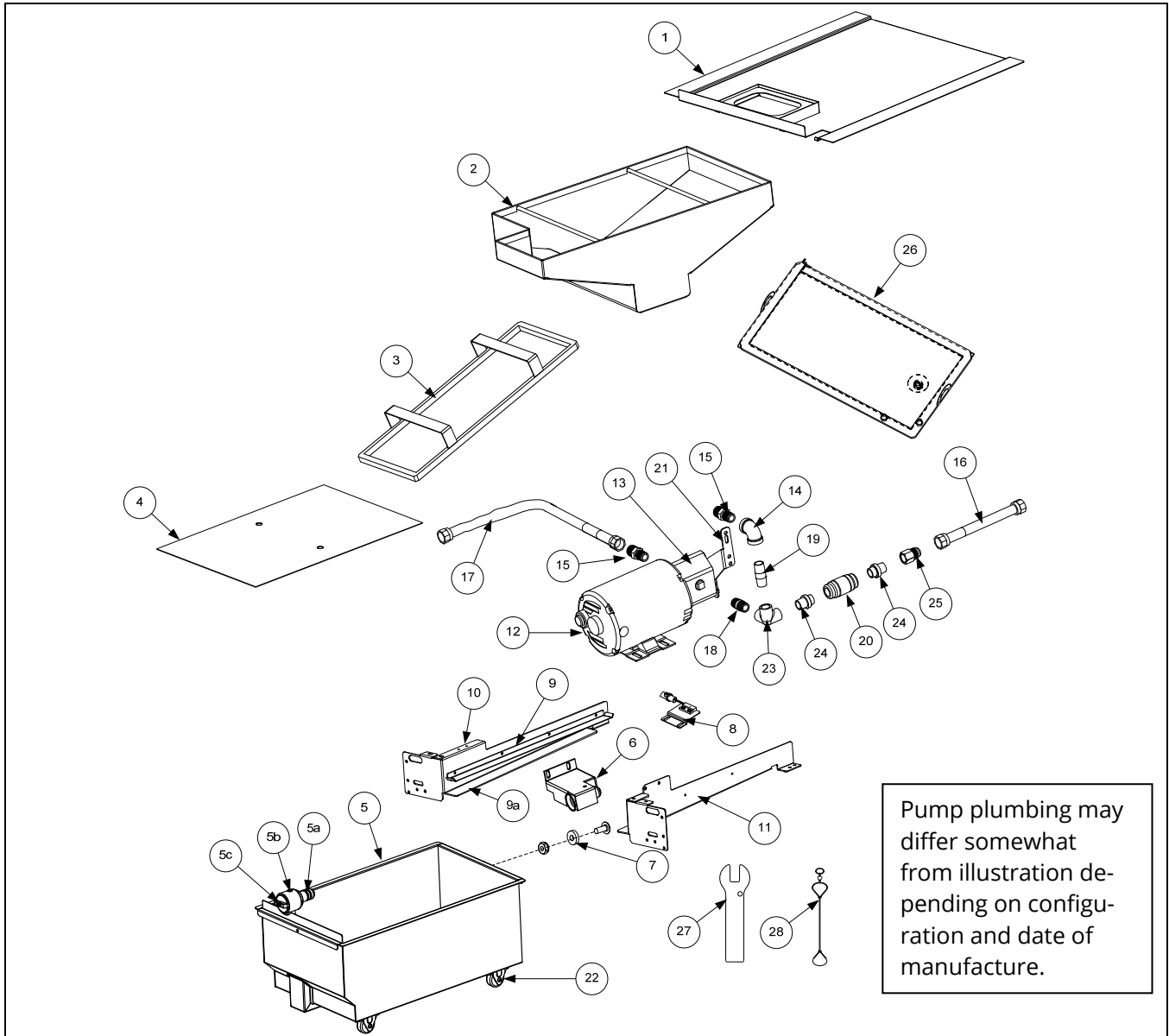


## 1.10 Gas Valves and Associated Components cont.

| ITEM | PART #         | COMPONENT   |
|------|----------------|---|
|      |                | <b>Gas Conversion Kits</b>  |
|      | <b>8262969</b> | <b>Natural to Propane (LP) Full Vat</b>   |
|      | <b>8262970</b> | <b>Natural to Propane (LP) Dual Vat</b>   |
|      | <b>8262971</b> | <b>Propane (LP) to Natural Full Vat</b>   |
|      | <b>8262972</b> | <b>Propane (LP) to Natural Dual Vat</b>   |
| √ 1  |                | Valve, Non-CE Gas   |
|      | 8261122        | Natural Gas (G20, G25) 3.2WC  |
|      | 8261123        | Propane Gas (G30, G31)  |
|      | 8263296        | Kit Natural Gas Full Vat w/ flexlines and hardware                                |
|      | 8263297        | Kit Natural Gas Dual Vat w/ flexlines and hardware                                |
|      | 8263298        | Kit, Propane Gas Full Vat w/ flexlines and hardware                               |
|      | 8263299        | Kit, Propane Gas Dual Vat w/ flexlines and hardware                               |
| √ 2  | 8101715        | Valve, CE Gas (G20, G25, G30, G31)  |
| 3    | 8101041        | Accessory Kit (contains parts to adapt Item 2 to specific fryer configuration)    |
| 4    | 8100691        | Tube, 1/8-inch Vent   |
| 5    | 8103147        | Bushing, 3/4-inch OD x 1/2-inch ID NPT Flush                                      |
| 6    | 8101355        | Gas Line, 3/8-inch OD X 15-inch SS Flexible                                       |
| 7    | 8101354        | Gas Line, 3/8-inch OD X 12-inch SS Flexible (use 8101353 for 9" for some DV pots) |
| 8    | 8130449        | Tee, 1/4 -inch NPT Brass  |
| 9    | 8130301        | Tee, 1/4-inch Male NPT to 3/8-inch Tube   |
| 10   | 8130302        | Elbow, 1/4-inch Male NPT to 3/8-inch Tube 90° (used on DV valve)                  |
| 11   | 8130304        | Bushing, 1/2-inch NPT to 1/4-inch NPT Flush Reducing                              |
| 12   |                | Orifice, Burner   |
|      | 8103977        | 1.88mm 75% Butane/25% Butane (Standard Elevation)                                 |
|      | 8103865        | 1.95mm Propane/Butane (G30, G31)  |
|      | 8103860        | 2.05 mm Propane/Butane (G30, G31) (0-4999 Ft, 0-1524 M)                           |
|      | 8103863        | 2.10 mm Propane/Butane (G30, G31) (5000-6999 Ft, 1525-2133 M)                     |
|      | 8103867        | 2.84mm Natural Gas (G20, G25) Australia Only DV                                   |
|      | 8103866        | 2.92mm Natural Gas (G20, G25) Australia Only FV                                   |
|      | 8103864        | 3.18 mm Natural Gas (G20, G25) (0-4999 Ft, 0-1524 M) CE                           |
|      | 8103861        | 3.26 mm Natural Gas (G20, G25) (0-4999 Ft, 0-1524 M)                              |
|      | 8103862        | 3.40 mm Natural Gas (G20, G25) (5000-6999 Ft, 1525-2133 M)                        |
| 13   | 8130378        | Fitting, 1/8-inch NPT Cross   |
| 14   | 8130340        | Adapter, 1/8-inch NPT to 1/8-inch Tube  |
| 15   | 8104238        | Tube, 1/8-inch OD X 5.40-inch Enrichment FV                                       |
|      | 8104239        | Tube, 1/8-inch OD X 4.80-inch Enrichment DV                                       |
| 16   | 8101176        | Tap, 1/8-inch NPT Pressure  |
| 17   | 8130377        | Tee, 1/8-inch NPT Female  |
| 18   | 8130354        | Elbow, 1/8-inch NPT X 1/8-inch Tube Compression                                   |
| 19   | 8130016        | Nipple, 1/8-inch NPT X Close  |
| 20   | 8101006        | Bushing, 1/4-inch NPT to 1/8-inch NPT Reducing                                    |
| 21   | 8130495        | Tee, 1/4-inch Male NPT to Female NPT  |
| 22   | 8101025        | Connector, 1/4-inch Male NPT to 3/8-inch Tube                                     |
| 23   | 8101026        | Tee, 1/4-inch Male NPT to Female NPT Street                                       |
| 24   | 8130700        | Nipple, 1/4-inch NPT x 3-inch   |

√ Recommended parts.

## 1.11 Filtration System Components



| ITEM | PART #    | COMPONENT  |
|------|-----------|--|
| 1    | 8238786   | Lid, Filter Pan  |
| 2    | 8238626   | Crumb Tray   |
| 3    | 8103289   | Hold-Down Ring 10.95" x 19.10"   |
| 4    | 8122025   | Sana Grid Filter Screen  |
| 5    | 1087700SP | Pan, Filter Assembly with casters (use 1088399SP for solid shortening) |
|      | TBD       | Pan, Filter Pan with casters ( <b>Only for use with Filter Leaf</b> )  |
| √ 5a | 8263288   | O-Ring (Pkg. of 6; used with Item 5)                                   |
| 5b   | 8130989   | Plug, 1/8" Socket Head Pipe (used with Item 5)                         |
| 5c   | 8238335   | Screen, Suction Line Filter  |
| 6    | 8239429   | Suction Tube   |
| 7    | 8103007   | Magnet, Pull Ring  |

\* Not illustrated.

√ Recommended parts

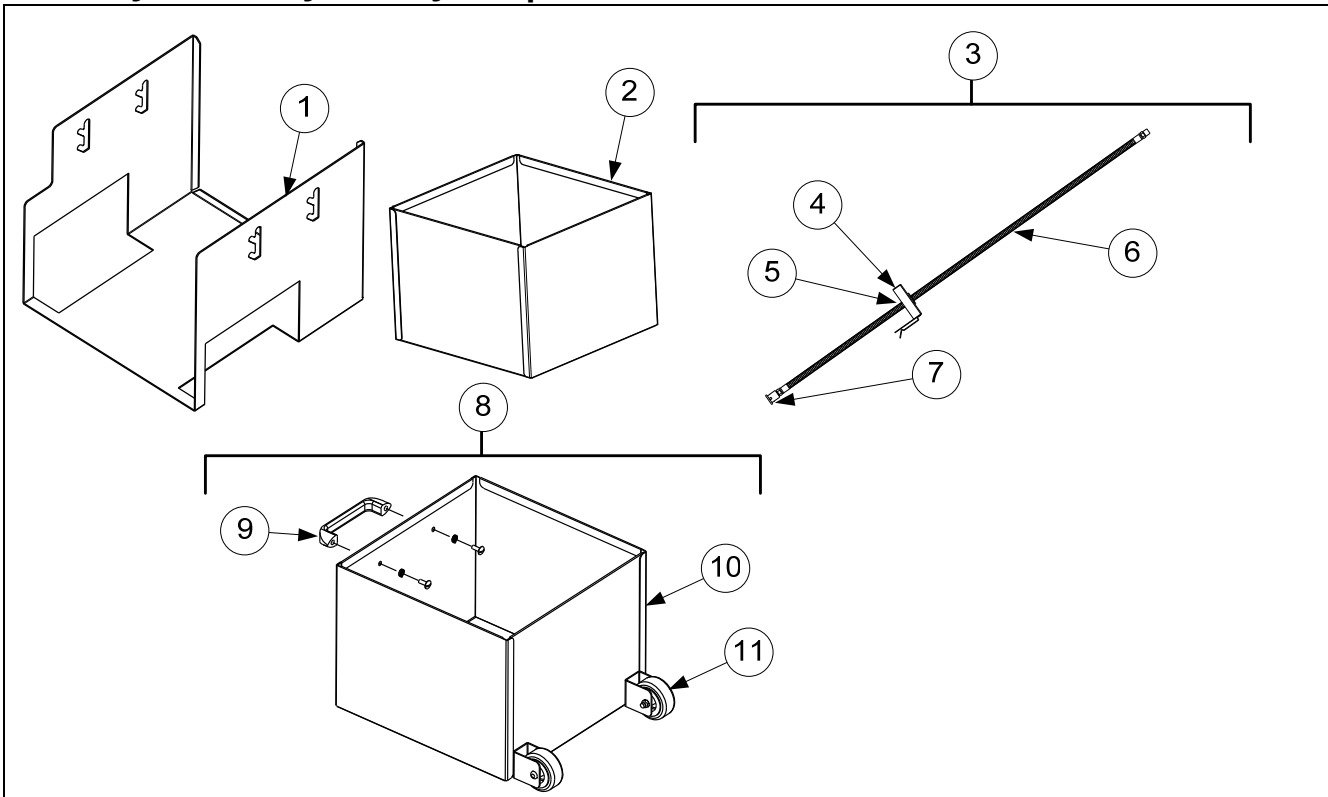
## 1.11 Filtration System Components cont.

| ITEM | PART #    | COMPONENT   |
|------|-----------|---|
| 8    | 1085626   | Assembly, Filter Pan Switch   |
| √ *  | 1065876SP | Sensor, Magnet  |
| 9    | 2318372   | Rail, Upper   |
| 9a   | 2308373   | Rail, Lower   |
| 10   | 8238030   | Support, Left Filter Pan  |
| 11   | 2208368   | Support, Right Filter Pan <i>(use 1082872 for 2-Battery)</i>                          |
| √ 12 |           | Motor and Gasket Kit  |
|      | 8261785   | 100V 50/60 Hz   |
|      | 8261712   | 115V 50/60 Hz   |
|      | 8261756   | 208V 50/60 Hz   |
|      | 8261270   | 220-240V 50/60 Hz   |
|      | 8261755   | 250V 50/60 Hz   |
| √ 13 | 8263191   | Pump and Gasket Kit, 4 GPM  |
|      | 8160093   | Gasket, Pump/Motor  |
| *    | 8091062   | Cap Screw, 5/16"-18 4.00" NC Hex <i>(Connects pump to motor) (use 8090194 washer)</i> |
| 14   | 8130062   | Elbow, ½" 90° BM  |
| 15   | 8101668   | Adapter, ⅝" to ½" NPT Male  |
| 16   | 8101067   | Flexline, ⅝" OD x 8.50-inches long Oil Return   |
| 17   | 8101369   | Flexline, 17.50-inch Oil Return   |
| 18   | 8130087   | Nipple, ½" x 1.50-inch NPT BM   |
| 19   | 8130298   | Nipple, ½" x 2.00-inch NPT BM   |
| 20   | 8104878   | Check Valve ½" NPT 1 PSI  |
| 21   | 2206191   | Brace, Pump Motor   |
| 22   | 8104137   | Caster, 2.00-inch   |
| 23   | 8130331   | Elbow, ½" NPT with Side Outlet BM (Non-Bulk - use item #14 in this location)          |
| 24   | 8103738   | Adapter, Check Valve Close  |
| 25   | 8101669   | Adapter, Female ⅝" OD x ½"  |
| 26   | TBD       | Leaf Assy, Filter <b><i>(Only for use with Filter Pan TBD)</i></b>                    |
| 27   | 2401086   | Wrench, Pre-Filter Cap  |
| 28   | 8104167   | Lanyard, Filter Screen Wrench   |
| *    | 8071105   | Heater Strip Assembly, 100-120V 25W 18"   |
| *    | 8071098   | Heater Strip Assembly, 208-250V 25W 18"   |

\* Not illustrated. √ Recommended parts.

## 1.12 ATO (Auto Top-Off) Components

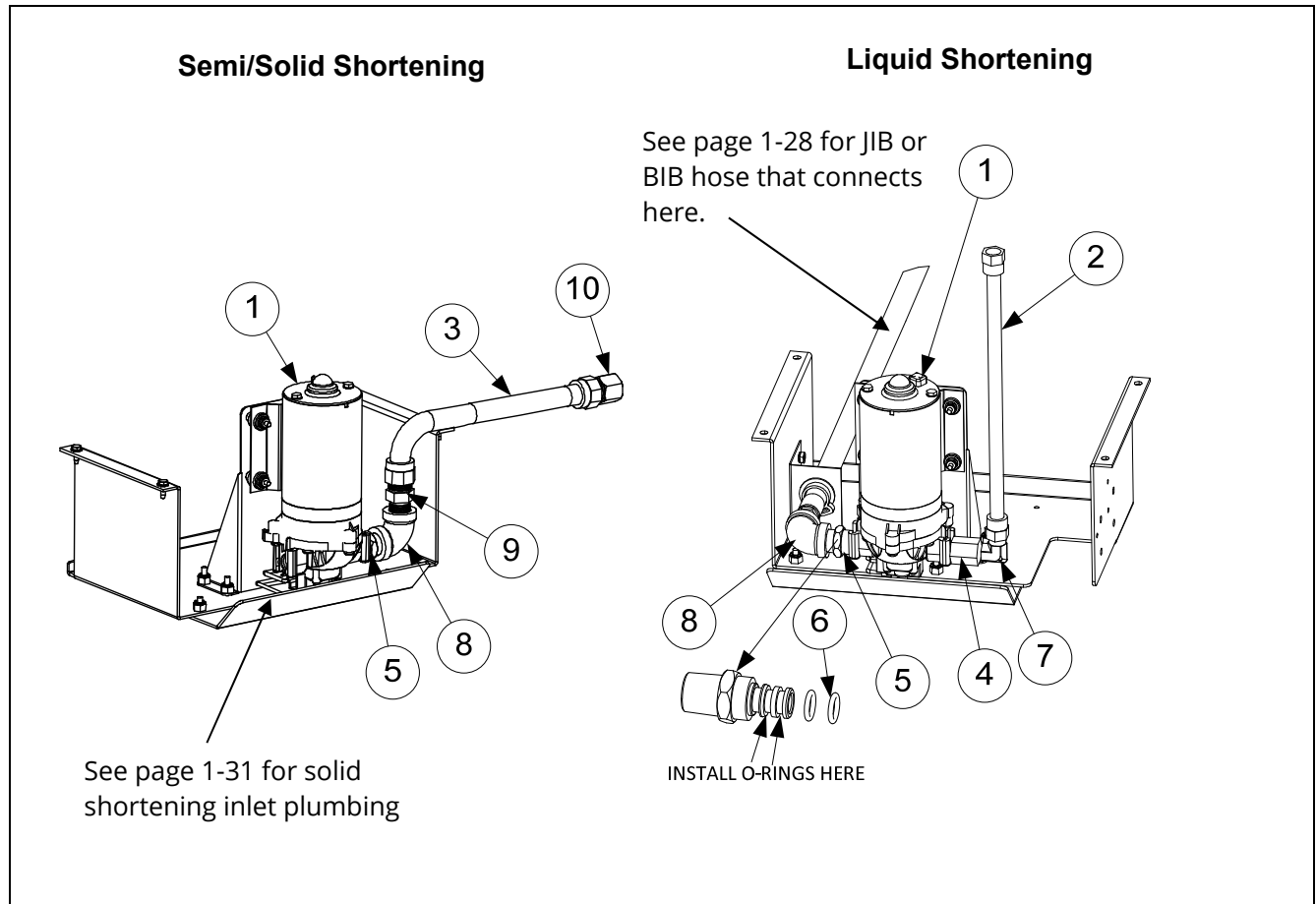
### 1.12.1 JIB Cradle, JIB Box, JIB Cap Assemblies



| ITEM | PART #    | COMPONENT                                    |
|------|-----------|--|
| 1    | 2600197   | Cradle, JIB Gas                              |
| *    | 8090402   | Screw, Thumb ¼-20 x ½"                       |
| 2    | 8242298   | Box, JIB                                     |
| 3    | 1082005SP | Cap, JIB Assembly (use 1082047 for Intl BIB) |
| 4    | 1082001   | Cap, JIB (use 1082002 for Intl. BIB)         |
| 5    | 8160870   | Clamp  |
| 6    | 8103823   | Hose, JIB                                    |
| 7    | 8237738   | Tip Assembly, JIB Suction Hose               |
| 8    | 1086895   | Box Assembly, JIB w/ Handle and Casters      |
| 9    | 8100180   | Handle                                       |
| 10   | 8239145   | Box, W/A JIB w/ handle                       |
| 11   | 8122337   | Caster, 2"                                   |

\* Not illustrated. √ Recommended parts.

## 1.12.2 ATO Pump Assembly Non-Bulk

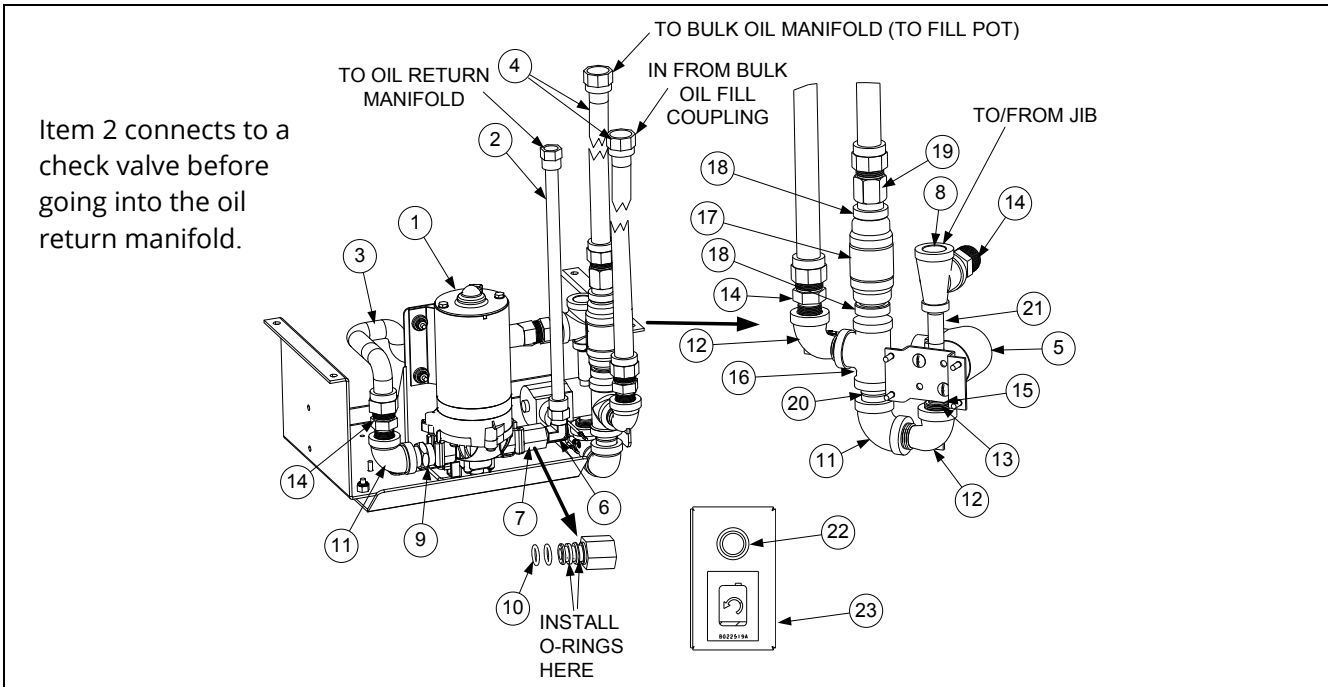


| ITEM | PART #  | COMPONENT   |
|------|---------|---|
| √ 1  | 1087705 | Pump, Assy FQG230 ATO, (use 1087706 for FQG330 or larger ATO)                           |
|      | 1084372 | Pump, Shurflo 24VAC (use 1085673 for CE)  |
| 2    | 8103263 | Flexline, ½" OD x 36-inch (use 8103375 17-inch for 2-battery) (Out to top off manifold) |
| 3    | 8101369 | Flexline, ⅝" OD x 17.50-inch (use 8101069 29.50-inch for 2-battery)                     |
| 4    | 1083403 | Fitting, Shurflo Pump with female end (includes O-rings)                                |
| 5    | 1082054 | Fitting, Shurflo Pump with male end (includes O-rings)                                  |
| 6    | 8160782 | O-Ring, Viton #111  |
| 7    | 8130940 | Elbow, ¼" NPT x ⅜" Flare  |
| 8    | 8130062 | Elbow, ½" 90° BM  |
| 9    | 8101668 | Adapter, ⅝" to ½" NPT Male  |
| 10   | 8101669 | Adapter, Female ⅝" OD x ½"  |

√ Recommended parts.



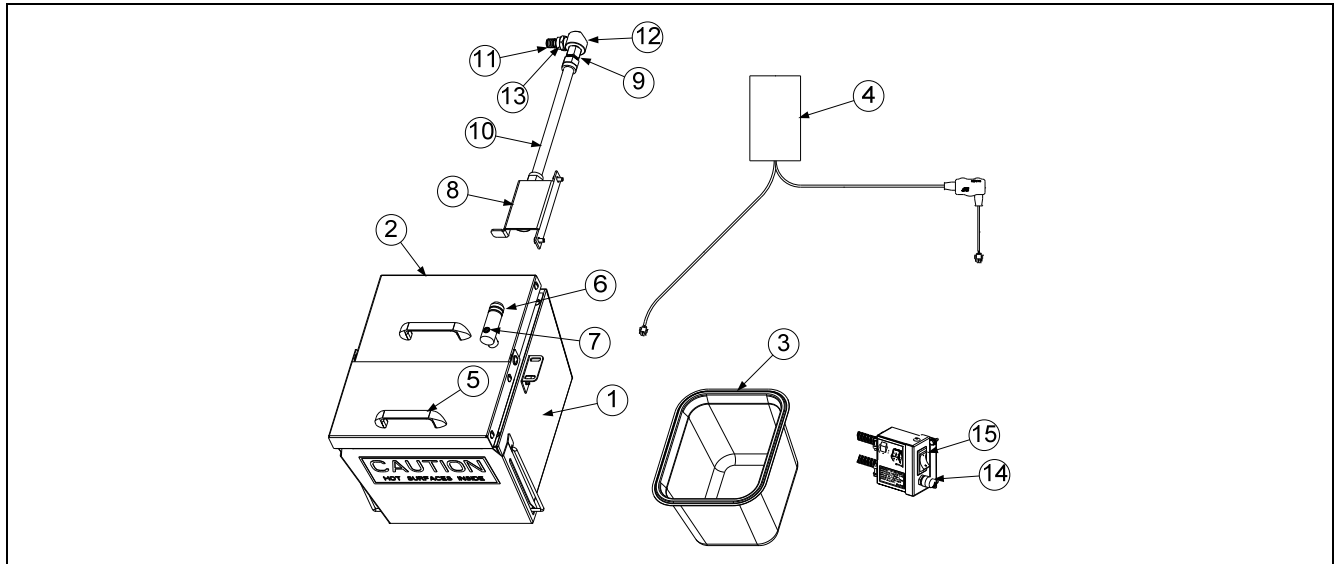
### 1.12.3 ATO Pump Assembly Bulk



| ITEM | PART #  | COMPONENT  |
|------|---------|--|
|      | 1087704 | Pump, Assy FQG230 Bulk ATO (use 1087702 for FQ330 bulk oil ATO)                            |
| √ 1  | 1084372 | Pump, Shurflo 24VAC (use 1085673 for CE)   |
| 2    | 8103263 | Flexline, ½" OD x 36-inch (Out to oil check valve and to return manifold) 3, 4 and 5 vats. |
|      | 8103375 | Flexline, ½" OD x 17-inch (Out to oil check valve and to return manifold) 2 vat            |
| *    | 8100667 | Check valve, ½ NPT 1 PSI   |
| 3    | 8101055 | Flexline, ⅝" OD x 11.50-inch (Inlet to Top Off Pump)                                       |
| 4    | 8101369 | Flexline, ⅝" OD x 17.50-inch   |
| 5    | 1066830 | Solenoid   |
| 6    | 8130940 | Elbow, ¼" NPT x ⅜ Flare  |
| 7    | 1083403 | Fitting, Shurflo Pump with female end (includes O-rings)                                   |
| 8    | 8130530 | Tee, Reducing ½" x ¼" x ½" (JIB hose connects here)  |
| 9    | 1082054 | Fitting, Shurflo Pump with male end (includes O-rings)                                     |
| 10   | 8160782 | O-Ring, Viton #111   |
| 11   | 8130062 | Elbow, ½" 90° BM   |
| 12   | 8130165 | Elbow, Street ½" x ½" NPT 90° BM   |
| 13   | 8130304 | Bushing, BM Flush  |
| 14   | 8101668 | Adaptor, Male ⅝" OD x ½"   |
| 15   | 8130838 | Nipple, ¼" NPT BM Close  |
| 16   | 8130003 | Tee, ½" x ½" x ½" BM   |
| 17   | 8103583 | Check Valve ½" NPT 4 PSI   |
| 18   | 8103738 | Adapter, Check Valve Close NPT   |
| 19   | 8101669 | Adapter, Female ⅞" OD x ½"   |
| 20   | 8130022 | Nipple, ½" x Close NPT BM  |
| 21   | 8130537 | Nipple, ¼" x 2.00" NPT   |
| 22   | 1069206 | Assembly, JIB Reset Button Bracket   |
| 23   | 8074678 | Switch, Momentary JIB Reset  |

\* Not illustrated. √ Recommended parts.

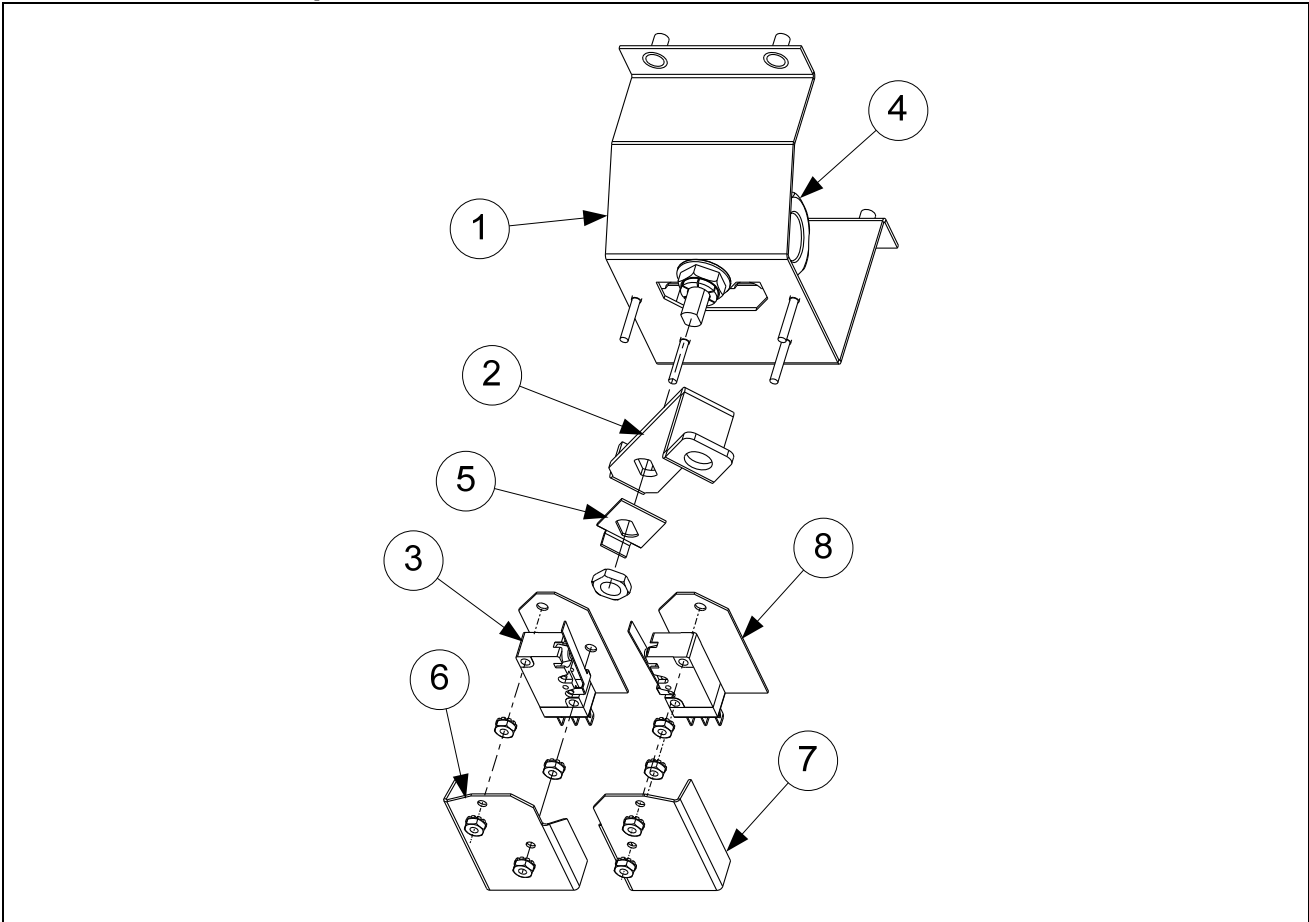
### 1.12.4 Shortening Melting Unit



| ITEM | PART #    | COMPONENT  |
|------|-----------|--|
|      | 1084497SP | Assy, Heated Shortening 120V (use 1084493 240V) (use 1085585 100V)     |
| 1    | 1084496   | Box Assy, Heated Shortening 120V (use 1084492 240V) (use 1085584 100V) |
| 2    | 1083774   | Assembly, Solid Shortening Lid   |
| 3    | 8103957   | Pan, Heated Shortening   |
| 4    | 8075321   | Strips, Hot Box Heater with controller 120V                            |
|      | 8075268   | Strips, Hot Box Heater with controller 240V                            |
|      | 8075732   | Strips, Hot Box Heater with controller 100V                            |
| 5    | 8100180   | Handle   |
| √ 6  | 8261392   | O-Ring (Pkg. of 5)   |
| 7    | 8130568   | Plug, 1/8" Socket Head Pipe  |
| 8    | 8238319   | Bracket W/A, Shortening Suction 3 battery                              |
| 9    | 8101669   | Adaptor, Female 7/8" OD x 1/2"   |
| 10   | 8101055   | Flexline, 5/8" OD x 11.5-inch  |
| 11   | 8160782   | O-Ring, Viton #111   |
| 12   | 8130908   | Adapter, 1/2" NPT 90°  |
| 13   | 1082054   | Fitting, Shurflo Pump with male end (includes O-rings)                 |
| 14   | 8071321   | Holder, Fuse   |
| √ *  | 8071555   | Fuse 5 Amp 240V  |
| √ *  | 8072799   | Fuse 10 Amp 120V   |
| 15   | 8074036   | Switch   |
| *    | 8071105   | Heater Strip Assembly, 120V, 25W 18"                                   |
| *    | 8071420   | Heater Strip Assembly, 120V, 25W 36"                                   |
| *    | 8071472   | Heater Strip Assembly, 120V, 40W 56"                                   |
| *    | 8071098   | Heater Strip Assembly, 240V, 25W 18"                                   |
| *    | 8071419   | Heater Strip Assembly, 240V, 45W 36"                                   |
| *    | 8071473   | Heater Strip Assembly, 240V, 70W 56"                                   |
| *    | 8071915   | Heater Strip Assembly, 100V, 25W 18"                                   |
| *    | 8071917   | Heater Strip Assembly, 100V, 40W 56"                                   |

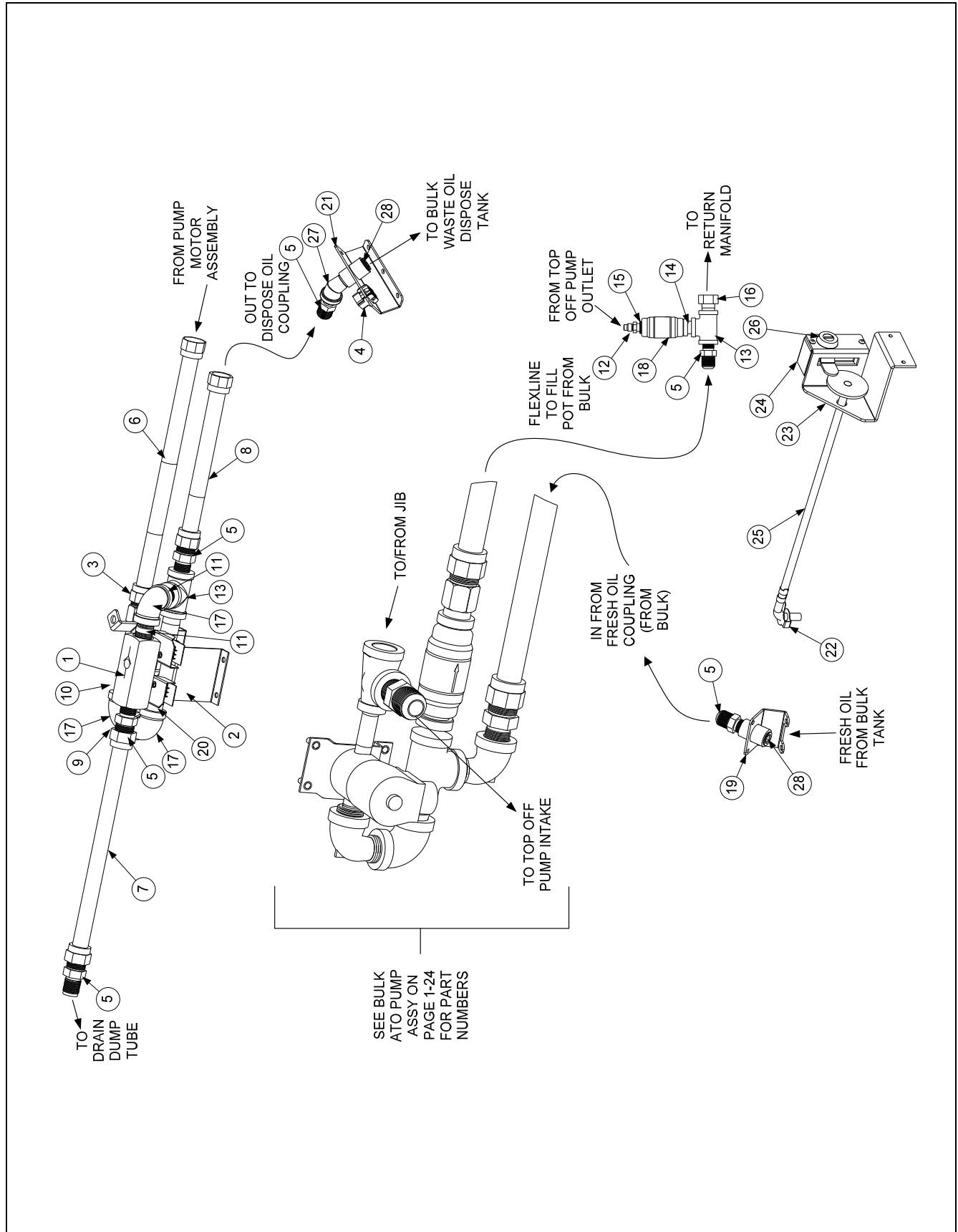
\* Not illustrated. √ Recommended parts.

**1.13 Bulk Oil System Components**  
**1.13.1 Bulk Oil Dispose Waste Valve**



| ITEM | PART #  | COMPONENT                    |
|------|---------|------------------------------|
|      | 1086009 | Valve, Bulk Dispose Waste FQ |
| 1    | 1086008 | Bracket, FQ Bulk Waste Valve |
| 2    | 2205899 | Handle, Bulk Waste Valve     |
| 3    | 8074936 | Microswitch, Gold Sealed     |
| 4    | 8100278 | Valve, 1/2" Ball             |
| 5    | 9002935 | Retainer, Nut Return Valve   |
| 6    | 9012348 | Cover, DV Safety Switch      |
| 7    | 9022348 | Cover, DV Safety Switch      |
| 8    | 8160220 | Insulation, RF Switch        |

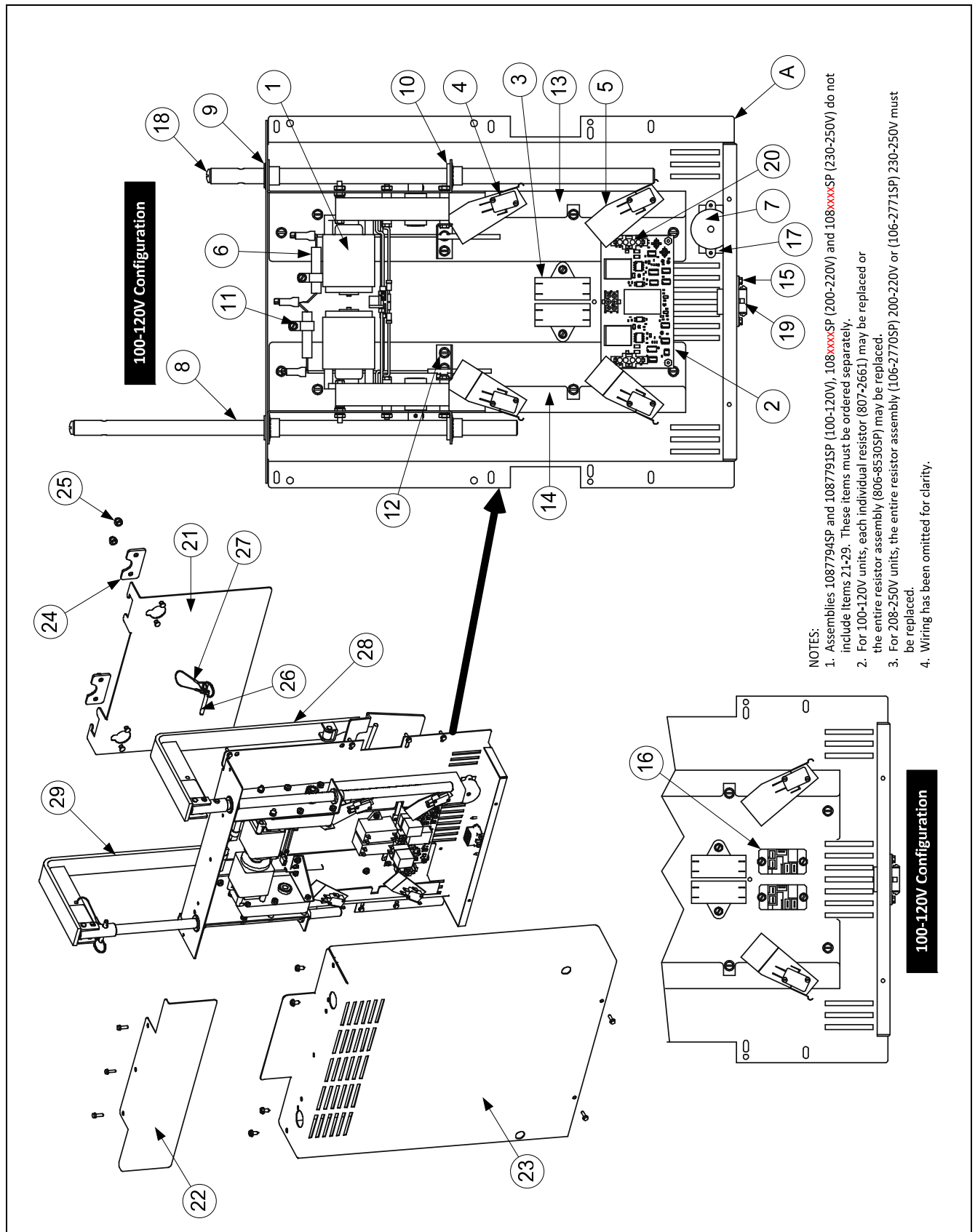
### 1.13.2 Bulk Oil Manifold and Accessories



### 1.13.2 Bulk Oil Manifold and Accessories cont.

| ITEM | PART #    | COMPONENT   |
|------|-----------|---|
| 1    | 8103531   | Valve, Check 20PSI  |
| 2    | 1086009   | Valve, Bulk Waste Assembly (see page 1-28 for parts)  |
| 3    | 8101669   | Adaptor, Male 5/8" OD x 1/2"  |
| 4    | 8076105   | Harness, Dispose/Pan SW/Bulk  |
| 5    | 8101668   | Adaptor, Male 5/8" OD x 1/2"  |
| 6    | 8101057   | Flexline, 5/8" OD x 13-inches long  |
| 7    | 8101055   | Flexline, 5/8" OD x 11.50-inches long   |
| 8    | 8101067   | Flexline, 5/8" OD x 8.50-inches long  |
| 9    | 8130022   | Nipple, 1/2" x Close NPT BM   |
| 10   | 8130251   | Nipple, 1/2" x 4.50-inches NPT BM (not shown in illustration – connects between item 17 and item 3) |
| 11   | 8130087   | Nipple, 1/2" x 1.50-inch NPT BM   |
| 12   | 8103270   | Fitting, 3/8" Flare x 1/4" NPT  |
| 13   | 8130003   | Tee, 1/2" x 1/2" x 1/2" BM  |
| 14   | 8103738   | Adaptor, Check Valve Close Nipple   |
| 15   | 8130304   | Bushing, 1/2" x 1/4"  |
| 16   | 8103160   | Adaptor, 1/2" NPT x 15/16"  |
| 17   | 8130062   | Elbow, 1/2" BM 90°  |
| 18   | 8100667   | Valve, Check 1/2" NPT 1 PSI Bulk Manifold   |
| 19   | 8237838   | Bracket W/A, Gas Bulk Fresh Oil   |
| 20   | 8130298   | Nipple, 1/2" x 2-inches NPT BM  |
| 21   | 8238827   | Bracket W/A, FQ Gas Bulk Dispose  |
|      | 1080686SP | Handle and Lock Assy, Gas Bulk  |
| 22   | 8090657   | Clip, Clevis Right Rod End  |
| 23   | 2205656   | Brace, Bulk Handle  |
| 24   | 2205657   | Cover, Bulk Handle  |
| 25   | 8237208   | Handle, Gas Bulk Waste Pull   |
| 26   | 8103587   | Lock, Bulk Waste Handle (includes keys)   |
| 27   | 8130342   | Elbow, Street 45° 1/2" NPT  |
| 28   | 8130463   | Plug, 1/2" NPT  |

# 1.14 Basket Lift Assembly and Associated Parts

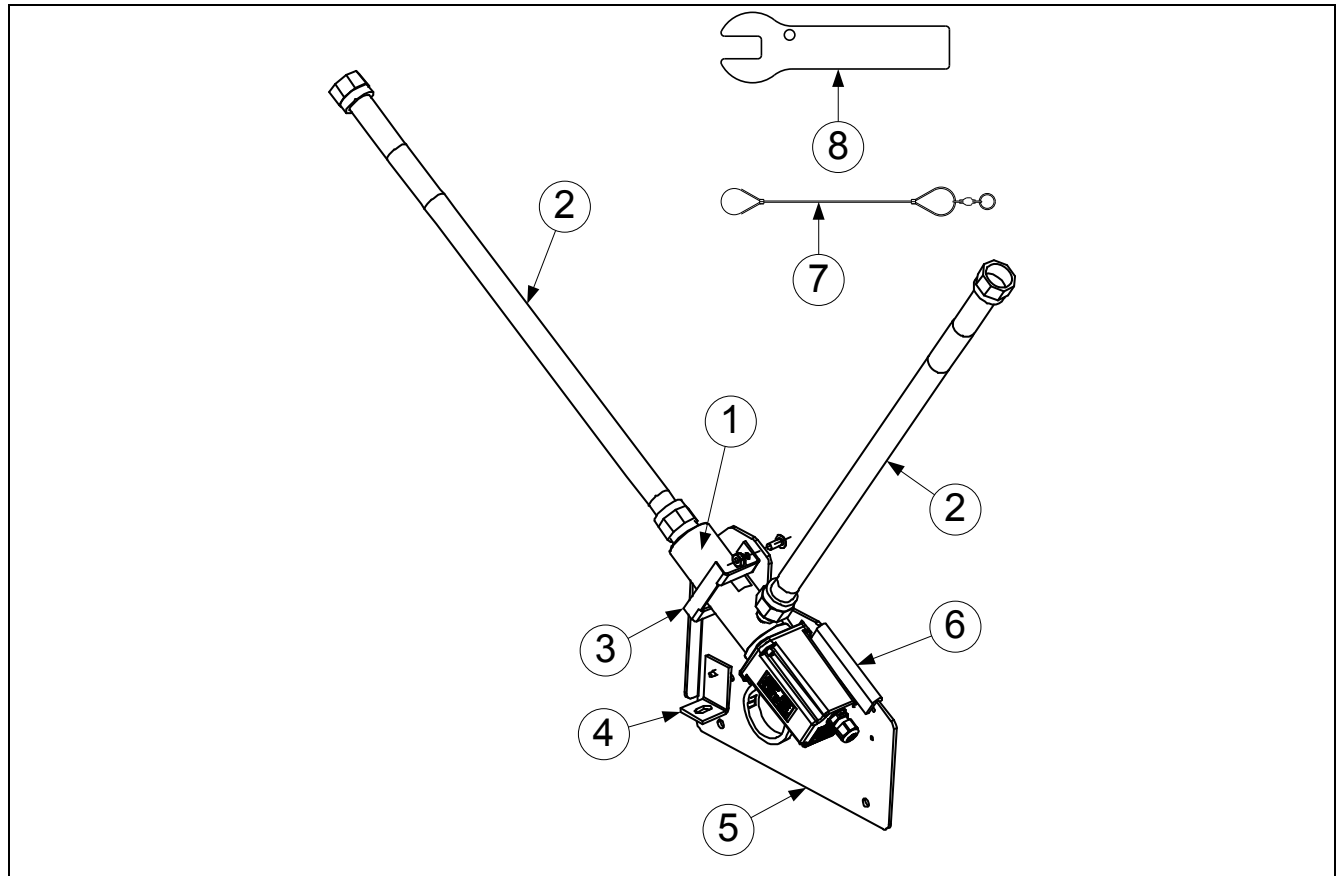


## 1.14 Basket Lift Assy and Associated Parts cont.

| ITEM | PART #    | COMPONENT  |
|------|-----------|--|
|      |           | <b>Basket Lift Assemblies</b> (see <b>Note 1</b> in illustration)  |
| A    | 1087794SP | Basket Lift Assy, 100-120VAC Reversing (Items 1-20) shown <b>Use 8263479 for kit that includes items 1-29.</b> |
| B    | 1088010SP | Basket Lift Assy, 100-120VAC Non-Reversing (Items 1-20) partially shown  |
|      | TBD       | Basket Lift Assy, 200-220VAC w/Relay (Items 1-20) shown  |
| *    | TBD       | Basket Lift Assy, 230-250VAC w/Relay (Items 1-20) not shown  |
| 1    | 1084181SP | Motor Assy, 100-120VAC Modular Basket Lift   |
|      | 1085031SP | Motor Assy, 208-250VAC Modular Basket Lift   |
| 2    | 4060070   | PCB Assy, Basket Lift Reversing (only in 1087794 assembly)   |
| 3    | 8072513   | Capacitor, 12.5 $\mu$ Fd 330VAC  |
| 4    | 8072572   | Microswitch  |
| 5    | 8120442   | Insulation, Microswitch  |
| 6    |           | Resistor Assy  |
|      | 8068530SP | 100-120V Modular Basket Lift (see <b>Note 2</b> in illustration)   |
|      | 1062770SP | 208-220VAC Modular Basket Lift   |
| *    | 1062771SP | 230-250VAC Modular Basket Lift   |
| 7    | 8103141   | Sound Device   |
| 8    | 8104855   | Rod, Modular BL w/Pin TB (use 8101012 for non-reversing)   |
| 9    | 8130035   | Bushing, Bronze  |
| 10   | 8090082   | Ring, Bushing Retainer   |
| 11   | 8090810   | Clamp, Nylon   |
| 12   | 2209678   | Gusset, Basket Lift Motor  |
| 13   | 2410330   | Chassis, Left Basket Lift (use 2411379 for non-reversing)  |
| 14   | 2420330   | Chassis, Right Basket Lift (use 2421379 for non-reversing)   |
| 15   | 2201415   | Plate, Basket Lift Harness   |
| 16   | 8071683   | Relay, 12VDC   |
| 17   | 8160862   | Tape, 3M VHB 1.00 X 2.00   |
| 18   | 8090129   | Screw, 1/4-20 X 5/8 Slotted Round Head   |
| 19   | 1087776   | Harness, Reversing Modular BL  |
| 20   | 1087775   | Harness, Reverse BL 4-Pin Connector  |
| *    | WIR1197   | Wire Assy, Basket Lift Reverse 100-120VAC  |
| *    | WIR0166   | Wire Assy, Basket Lift Reverse 200-250VAC (used in non-reverse also)   |
| 21   | 1087768   | Guide, B/L Arm   |
| 22   | 2401693   | Shield, Rear Modular B/L Cover   |
| 23   | 2401694   | Cover, FQ4000 Modular B/L (use 2601846 non-reversing)  |
| 24   | 2601474   | Cover, Basket Hanger Rivet B/L   |
| 25   | 8090047   | Nut, Cap 1/4" -20  |
| 26   | 8104852   | Pin, 1/4" X 1-5/16" Quick Release  |
| 27   | 8104854   | Lanyard, w/Ring  |
| 28   | 8239432   | Arm, Left Basket Lift Taco Bell (use 8239435 for General Market) (use 8239462 for Arby's)                      |
| 29   | 8239433   | Arm, Right Basket Lift Taco Bell (use 8239436 for General Market) (use 8239497 for Arby's)                     |

\* Not illustrated.

## 1.15 Oil Quality Sensor (OQS) and Associated Parts



| ITEM | PART #  | COMPONENT  |
|------|---------|--|
|      | 8263494 | Kit, OQS FilterQuick Gas 2-5 Battery (Kit to add to existing FilterQuick-T FQG30-T Gas Fryers) |
| 1    | 8263292 | Sensor, FilterQuick OQS Replacement  |
| 2    | 8101369 | Flexline, 5/8" OD x 17.50-inch   |
| 3    | 2401385 | Retainer, OQS Sensor FQ  |
| 4    | 2401386 | Brace, OQS Sensor Mount  |
| 5    | 2401438 | Mount, OQS Sensor FQ   |
| 6    | 8122524 | Insulation   |
| 7    | 8104167 | Lanyard, In-Line Filter  |
| 8    | 2401086 | Wrench, Pre-Filter Cap   |



# 1.16 FilterQuick™ FQG30-T Series Simplified Wiring

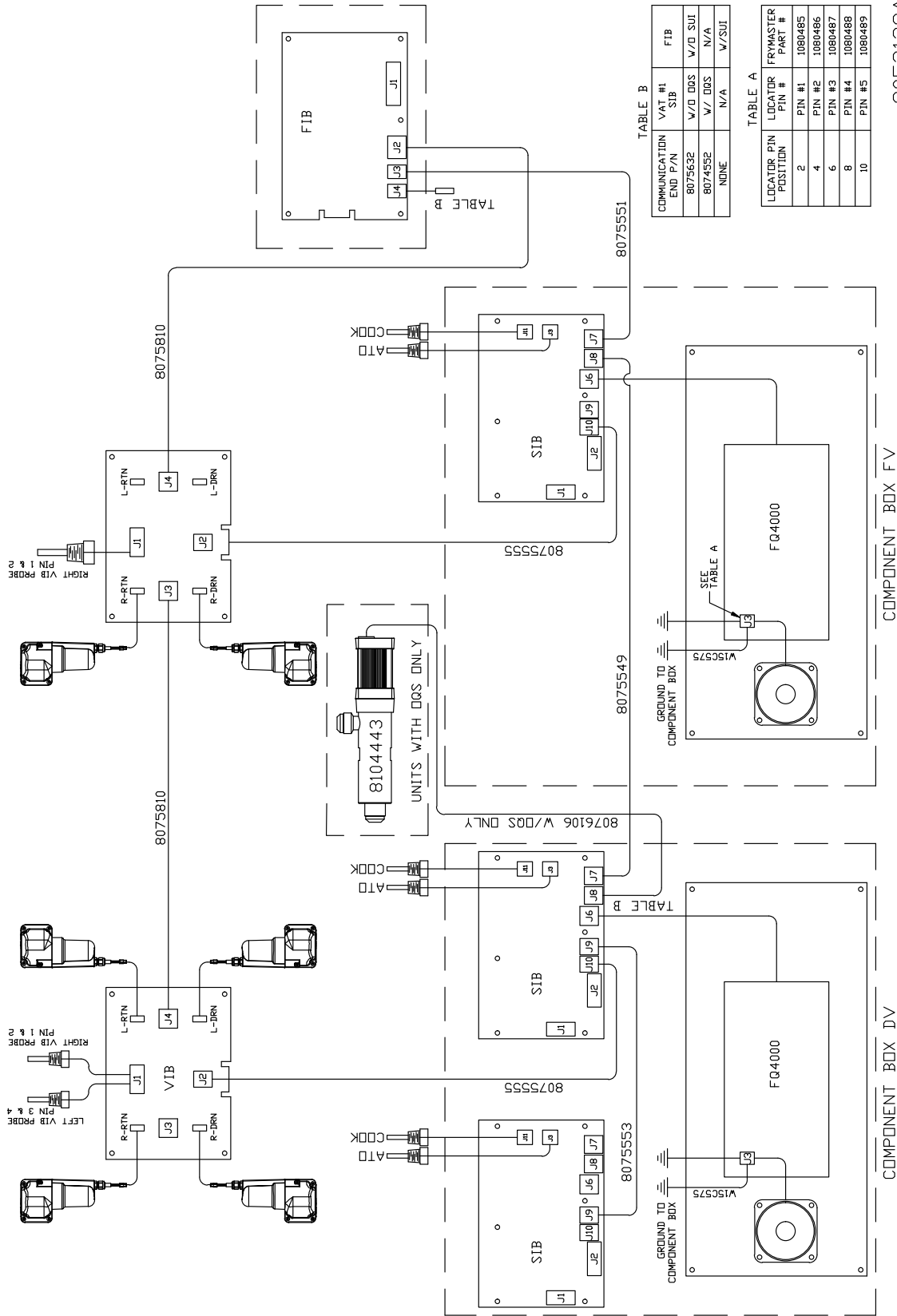


TABLE B

| COMMUNICATION<br>END P/N | VAT #1<br>SIB | FIB     |
|--------------------------|---------------|---------|
| 8075632                  | W/D DQS       | W/D SUI |
| 8074552                  | W/ DQS        | N/A     |
| NONE                     | N/A           | V/SUI   |





TABLE A

| LOCATOR PIN<br>POSITION | LOCATOR<br>PIN # | FRYMASTER<br>PART # |
|-------------------------|------------------|---------------------|
| 2                       | PIN #1           | 1080485             |
| 4                       | PIN #2           | 1080486             |
| 6                       | PIN #3           | 1080467             |
| 8                       | PIN #4           | 1080488             |
| 10                      | PIN #5           | 1080489             |

8052138A

**WELBILT®***Bringing innovation to the table***WWW.WELBILT.COM**

Welbilt provides the world's top chefs, and premier chain operators or growing independents with industry leading equipment and solutions. Our cutting-edge designs and lean manufacturing tactics are powered by deep knowledge, operator insights, and culinary expertise. All of our products are backed by KitchenCare® – our aftermarket, repair, and parts service.

 CLEVELAND  
CONVOTHERM® DELFIELD®  
FITKITCHEN™ FRYMASTER®  
GARLAND KOLPAK®  
LINCOLN MANITOWOC®  
MERCO® MERRYCHEF®  
MULTIPLEX®