

# FilterQuick™ FQGLA-T

## Gas Fryer

### Parts Manual

This manual is updated as new information and models are released. Visit our website for the latest manual.



#### FOR YOUR SAFETY

Do Not Store or use gasoline or other flammable vapors and liquids in the vicinity of this or any other appliance.



Part Number: FRY\_P\_8197446 07/2017

Original Instructions

**NOTICE**

**IF, DURING THE WARRANTY PERIOD, THE CUSTOMER USES A PART FOR THIS FRYMASTER EQUIPMENT OTHER THAN AN UNMODIFIED NEW OR RECYCLED PART PURCHASED DIRECTLY FROM FRYMASTER DEAN, OR ANY OF ITS FACTORY AUTHORIZED SERVICERS, AND/OR THE PART BEING USED IS MODIFIED FROM ITS ORIGINAL CONFIGURATION, THIS WARRANTY WILL BE VOID. FURTHER, FRYMASTER DEAN AND ITS AFFILIATES WILL NOT BE LIABLE FOR ANY CLAIMS, DAMAGES OR EXPENSES INCURRED BY THE CUSTOMER WHICH ARISE DIRECTLY OR INDIRECTLY, IN WHOLE OR IN PART, DUE TO THE INSTALLATION OF ANY MODIFIED PART AND/OR PART RECEIVED FROM AN UNAUTHORIZED SERVICER.**

# Table of Contents

---

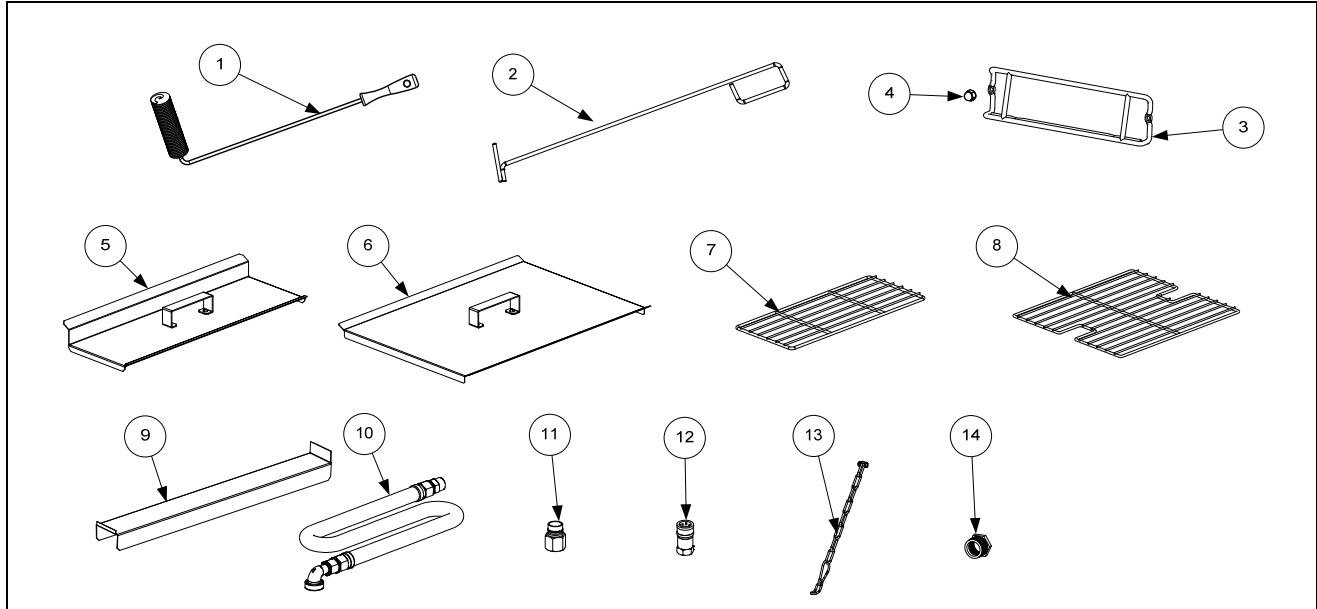
## CHAPTER 1: Parts List

|        |  |      |
|--------|--|------|
| 1.1    | Accessories.....   | 1-1  |
| 1.2    | Doors, Sides, Flue Caps, Top Caps and Casters.....                               | 1-2  |
| 1.3    | Drain System Components.....   | 1-3  |
| 1.4    | Electronics and Electrical Components.....                                       | 1-4  |
| 1.4.1  | Component Boxes and Associated Components.....                                   | 1-4  |
| 1.4.2  | Power Distribution Boxes .....   | 1-5  |
| 1.4.3  | ATO (Automatic Top Off)/FIB (Filter Interface Board) /Filter Box Components..... | 1-6  |
| 1.4.4  | VIB (Valve Interface Board) Components .....                                     | 1-7  |
| 1.4.5  | Power Reset Switch and USB Connector .....                                       | 1-7  |
| 1.5    | Wiring.....  | 1-8  |
| 1.5.1  | Main Wiring Harnesses SIB J1 to Components .....                                 | 1-8  |
| 1.5.2  | Ignition Wiring Harnesses SIB J2 to Components .....                             | 1-9  |
| 1.6    | Frypots and Associated Components.....   | 1-10 |
| 1.6.1  | Full-Vat Frypot Components .....   | 1-10 |
| 1.6.2  | Dual-Vat Frypot Components .....   | 1-12 |
| 1.6.3  | Frypot Assemblies and Associated Parts .....                                     | 1-14 |
| 1.7    | Oil Return Manifolds .....   | 1-15 |
| 1.8    | Gas Supply and Combustion System Components .....                                | 1-16 |
| 1.9    | Gas Valves and Associated Components.....  | 1-17 |
| 1.10   | Filtration System Components .....   | 1-19 |
| 1.10.1 | Filter Pan, Pump, Motor, etc. ....   | 1-19 |
| 1.10.2 | Oil Quality Sensor (OQS) and Associated Parts .....                              | 1-20 |
| 1.11   | ATO (Auto Top Off) Components .....  | 1-20 |
| 1.11.1 | JIB Cradle, JIB Cap and Pick-Up Assembly and JIB (ATO) Reset Switch .....        | 1-21 |
| 1.11.2 | ATO Pump Assembly – Non-Bulk.....  | 1-21 |
| 1.11.3 | ATO Pump Assembly – Bulk.....  | 1-22 |
| 1.12   | Bulk System Components.....  | 1-23 |
| 1.12.1 | Bulk Dispose Waste Valve .....   | 1-23 |
| 1.12.2 | Bulk Manifold and Accessories .....  | 1-24 |
| 1.13   | Datalink System Components.....  | 1-25 |

# FQGLA30-T FILTERQUICK™ GAS FRYERS

## CHAPTER 1: PARTS LIST

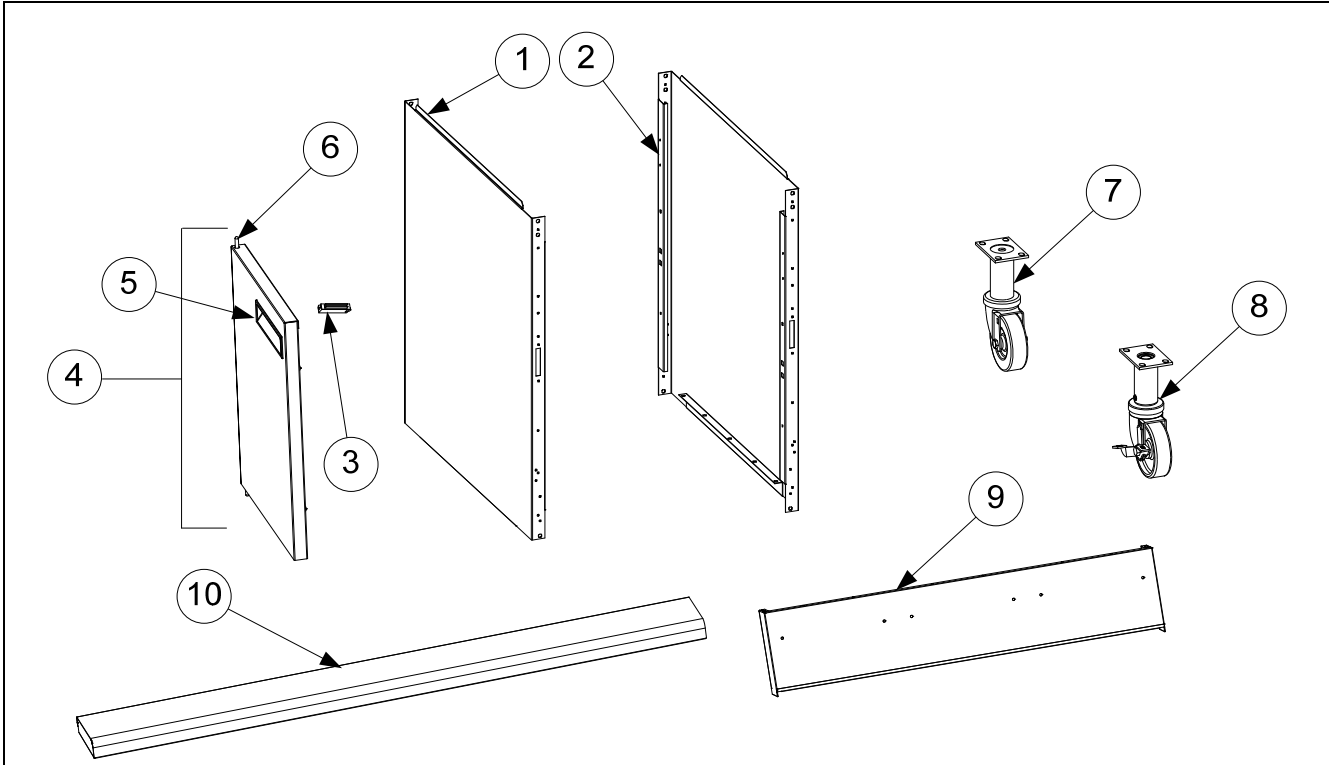
### 1.1 Accessories



| ITEM | PART #    | COMPONENT   |
|------|-----------|---|
| 1    | 8030429   | Brush, Frypot   |
| 2    | 8030388   | Fryers Friend Low Oil Volume Frypot   |
| 3    | 8102793   | Hanger, Basket  |
|      | 8104623   | Hanger, Basket 2-Battery  |
|      | 8104622   | Hanger, Basket 3-Battery  |
| 4    | 8090047   | Nut, Cap ¼-20 Hi Profile SS   |
| 5    | 1086267   | Cover, Frypot, Dual Vat   |
| 6    | 1086266   | Cover, Frypot, Full Vat   |
| *    | 8260993SP | Handle Kit, Frypot Cover (includes handle and screws)                       |
| 7    | 8030372   | Basket Support Rack, Dual Vat   |
| 8    | 8030375   | Basket Support Rack, Full Vat   |
| *    | 8030136   | Basket Support Screen, Full Vat (screen w/handle used in place of Item 8)   |
| 9    | 1086126   | Connecting Strip, Frypot  |
| 10   | 8100478   | Gas Line, 1-Inch Dormont Flexible   |
|      | 8061698SP | 36-Inch (for gas line only (w/o Items 11 and 12), use 8100088)              |
|      | 8061699   | 48-Inch (for gas line only (w/o Items 11 and 12), use 8100085)              |
| 11   | 8100074   | Quick-Disconnect Fitting, 1-Inch Male                                       |
| 12   | 8100073   | Quick-Disconnect Fitting, 1-Inch Female                                     |
|      | 8103745   | Quick Disconnect Fittings, ¾-inch set (includes male and female connectors) |
| 13   | 8260900   | Kit, Chain Restraint  |
| *    | 8261095   | Kit, Anchor Strap   |
| *    | 8263283   | Bracket, Locking Cabinet (used to lock into hoods)                          |
| 14   | 8261045   | Bushing, Flexible Gas Line (8130032)  |

\* Not illustrated.

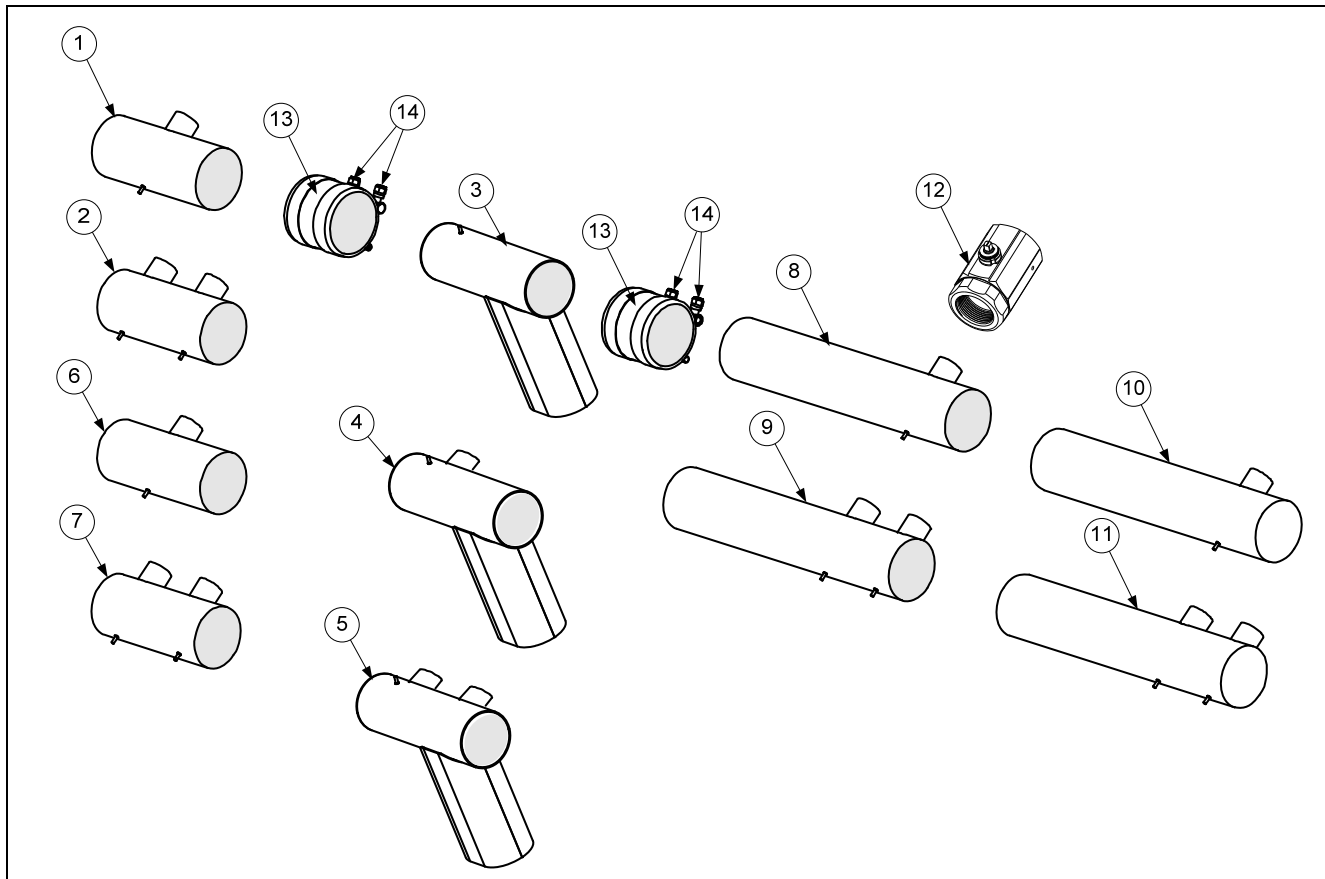
## 1.2 Doors, Sides, Flue Caps, Top Caps, Flue Deflector and Casters



| ITEM | PART #  | COMPONENT   |
|------|---------|---|
| 1    | 2610759 | Side, Cabinet Left  |
| 2    | 2620759 | Side, Cabinet Right   |
| 3    | 8101105 | Magnet, Door  |
| 4    | 1086040 | Door, Right (shown)   |
| *    | 1086039 | Door, Left  |
| 5    | 8104146 | Handle, Snap-In-Plastic   |
| 6    | 1064067 | Pin Assembly, Door  |
| *    | 8100275 | Spring, Door Pin  |
| *    | 8100658 | Retaining Ring  |
| *    | 2307192 | Hinge, Door Lower   |
| *    | 2206097 | Holder, Manual  |
| 7    | 8100327 | Caster without Brake  |
| 8    | 8100944 | Caster with Brake   |
| 9    |         | Flue Cap-Stainless Steel  |
|      | 8238852 | Two Station Fryer (requires 2-8238858, 4-8091105 and 4-8160950)                           |
|      | 8238847 | Three Station Fryer (requires 3-8238858, 6-8091105 and 6-8160950)                         |
|      | 8239361 | Four Station Fryer (requires 4-8238858, 8-8091105 and 8-8160950)                          |
|      | 8239362 | Five Station Fryer (requires 5-8238858, 10-8091105 and 10-8160950)                        |
|      | 8238858 | Plate W/A, Basket Hanger w/ studs (used to mount basket hanger - one required per frypot) |
|      | 8091105 | Pushnut, 1/4" Retainer  |
|      | 8160950 | O-Ring, .139 x .250 Viton (used as a spacer between plate and flue cap)                   |
| 10   |         | Top Cap (Cap for 5-station fryer shown)   |
|      | 1086075 | Two Station Fryer   |
|      | 1086043 | Three Station Fryer   |
|      | 1086088 | Four Station Fryer  |
|      | 1086089 | Five Station Fryer  |

\* Not illustrated.

### 1.3 Drain System Components

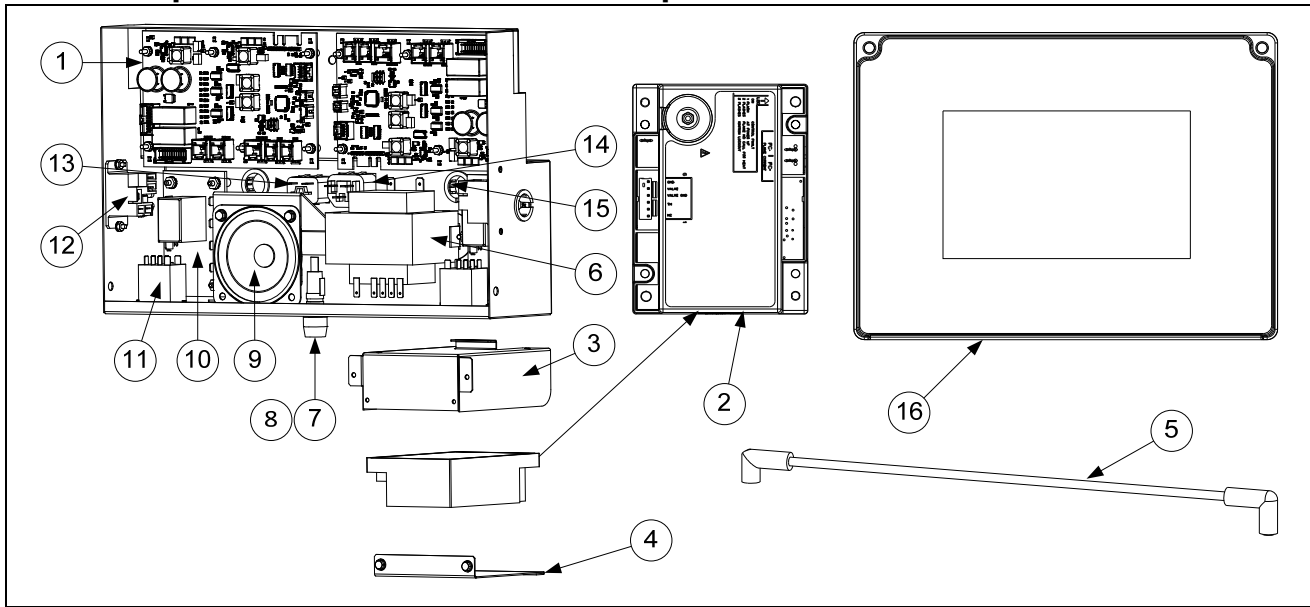


| ITEM | PART #  | COMPONENT   |
|------|---------|---|
| 1    | 8239132 | Drain Tube, Full-Vat Left Closed/Right End Open or Left Open/Right End Closed (Short) |
| 2    | 8239134 | Drain Tube, Dual-Vat Left Closed/Right End Open or Left Open/Right End Closed (Short) |
| 3    | 8238799 | Drain Tube, Downspout (3+ Battery)  |
| 4    | 8239131 | Drain Tube, Downspout Full-Vat (2 Battery)  |
| 5    | 8239133 | Drain Tube, Downspout Dual-Vat (2 Battery)  |
| 6    | 8239137 | Drain Tube, Full-Vat Left and Right Open (Short)                                      |
| 7    | 8239138 | Drain Tube, Dual-Vat Left and Right Open (Short)                                      |
| 8    | 8239139 | Drain Tube, Full-Vat Left and Right Open (Long)                                       |
| 9    | 8239140 | Drain Tube, Dual-Vat Left and Right Open (Long)                                       |
| 10   | 8239135 | Drain Tube, Full-Vat Left Open/Right End Closed (Long)                                |
| 11   | 8239136 | Drain Tube, Dual-Vat Left Open/Right End Closed (Long)                                |
| 12   | 8104353 | Valve, 1/4-inch NPT Rotary Actuator   |
| 13   | 8160772 | Sleeve  |
| 14   | 8091095 | Clamp 3.25" x 3.00" Double T-Bolt   |
|      | 8090969 | Clamp 3.25" x .75" Single T-Bolt  |
| *    | 8160665 | Vinyl Cap .218 x 500  |

\* Not illustrated.

## 1.4 Electronics and Electrical Components

### 1.4.1 Component Boxes and Associated Components



| ITEM | PART #  | COMPONENT  |
|------|---------|--|
| √ 1  | 1087511 | Board, Interface SIB (Smart Interface Board) <b>General Market/ Burger King</b>                            |
| √    | 1087533 | Board, Interface SIB (Smart Interface Board) <b>Taco Bell</b>  |
| √ *  | 8076162 | Harness, Ignition Module Fenwal DV   |
| √ *  | 8076163 | Harness, Ignition Module Fenwal FV   |
| √ 2  | 8075949 | Module, Ignition Single Spark Fenwal   |
| 3    | 1087468 | Bracket, Ignition Module Fenwal  |
| 4    | 2401585 | Cover, Ignition Module Fenwal  |
| √ 5  | 8075614 | Cable, 12-inch Ignition  |
| *    | 8073484 | Connector, Rajah   |
| √ 6  | 8075362 | Transformer, 24VAC 80VA 100V-240V  |
| √ 7  | 8071321 | Fuse Holder  |
| √ 8  | 8075570 | Fuse 3.5A 250V   |
| √ 9  | 8075829 | Speaker 4ohm   |
| 10   | 8074812 | Relay, 7-sec. Time Delay 120V ( <b>U.S., Canadian &amp; Mexico units</b> ) (only units w/ OIB sensor)      |
|      | 8074934 | Relay, 7-sec. Time Delay 220V, 230V, 240V & 250V ( <b>International units</b> ) (only units w/ OIB sensor) |
| 11   | 8075623 | Relay, 24VDC SPDT OIB (Oil Is Back) Sensor (only on units with OIB sensor)                                 |
| √ 12 | 8071683 | Relay, Blower 12VDC  |
| 13   | 8075368 | Receptacle, C14 IEC Cord Inlet   |
| 14   | 8075369 | Receptacle, C14 IEC Cord Outlet  |
| 15   | 8071926 | Bushing, .875 Split  |
| √ 16 | 1087515 | Controller, FQ4000 <b>General Market/Burger King</b>   |
| √    | 1087536 | Controller, FQ4000 <b>Taco Bell</b>  |
| *    | 8104320 | Lanyard, Controller Restraint  |
|      |         | <b>See Wiring Diagrams in FQGLA30-T Service Manual for cable locations</b>                                 |
| *    | 8075553 | Cable, P-Bus Left SIB to Right SIB   |
| *    | 8075555 | Cable, P-Bus w/ power Right SIB to VIB (Valve Interface Board)   |
| *    | 8075551 | Cable, C-Bus Right SIB to FIB (Filtration Interface Board)   |
| *    | 8075549 | Cable, C-Bus Right SIB to Right SIB (Connects component boxes together)                                    |
| *    | 8075554 | Cable, C-Bus w/ power 85" (Connects SIB to FIB)  |
| *    | 8075632 | Terminator, CAN End Communication RJ11   |
| *    | 8075863 | Harness, Wire Right SIB J1 to Components   |
| *    | 8075864 | Harness, Wire Left SIB J1 to Components  |

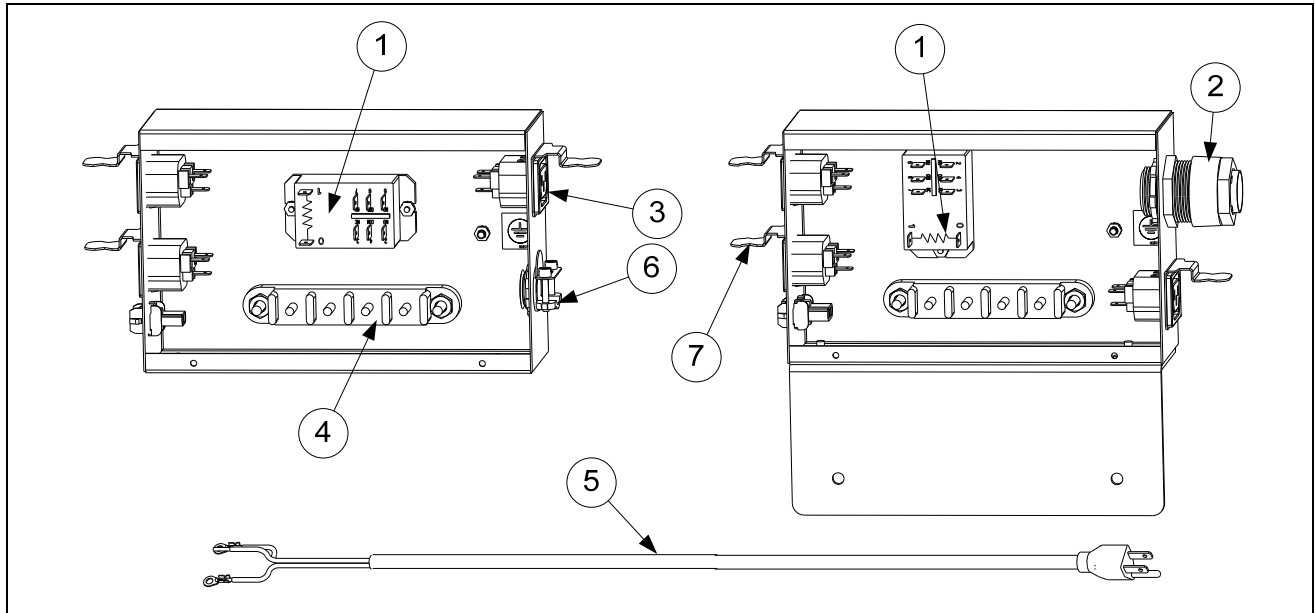
\* Not illustrated. √ Recommended parts.

### 1.4.1 Component Boxes and Associated Components cont.

| ITEM | PART #  | COMPONENT  |
|------|---------|--|
| *    | 8075380 | Harness, Wire SIB J2 to Components Full Vat  |
| *    | 8075379 | Harness, Wire SIB J2 to Components Dual Vat  |
| *    | 1086017 | Harness Assy, Power Blower   |
| *    | 8075564 | Cord, Power Distribution Box to Left Component Box   |
| *    | 8075568 | Cord, Power Component Box to Component Box   |
| *    | 8076106 | Adapter, RJ11 CAN to Legacy 6-pin CAN (Micro Mate & Lock) (connects OQS sensor to SIB bd) 5" |

\* Not illustrated. √ Recommended parts.

### 1.4.2 Power Distribution Boxes

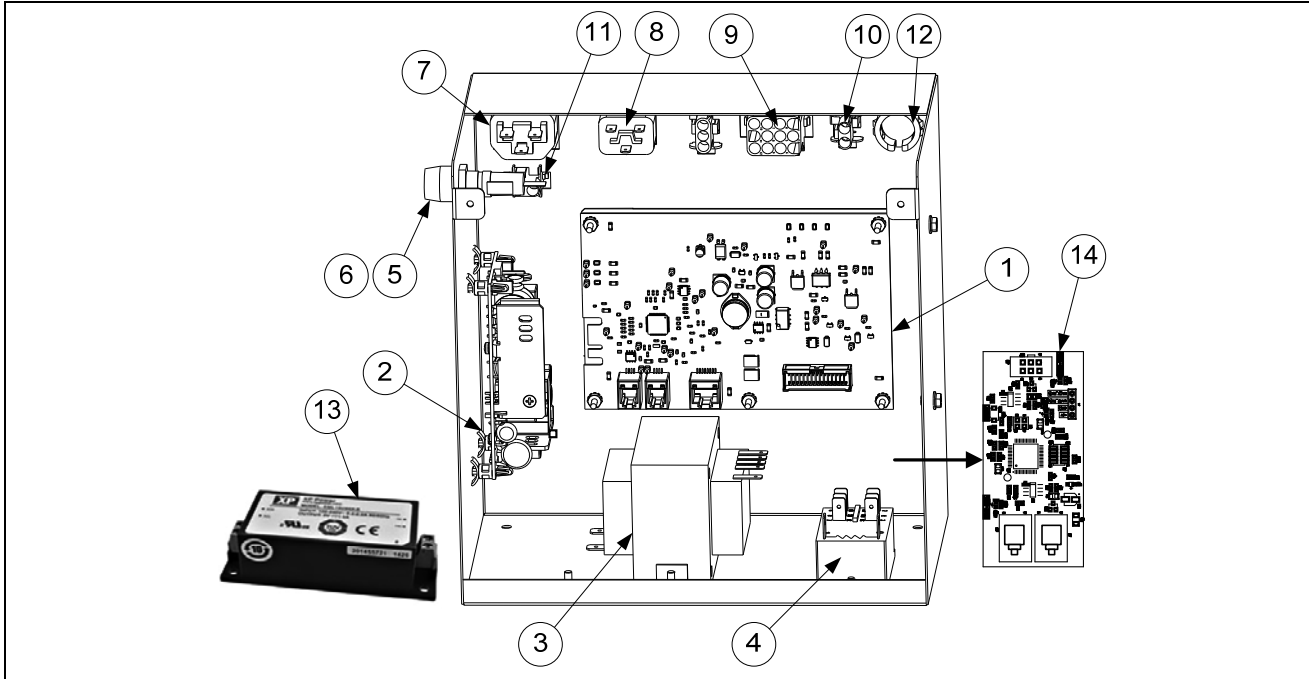


| ITEM | PART #  | COMPONENT   |
|------|---------|---|
|      |         | Box Assembly, Power Distribution  |
| √ 1  | 8075802 | Relay, 30A DPDT 120VAC Coil (Master Power Reset)                                  |
| 2    | 8071560 | Strain Relief   |
| √ 3  | 8075369 | Receptacle, C14 IEC Cord Outlet   |
| 4    | 8071973 | Terminal, Post  |
| 5    | 8067742 | Cord set with ring terminals 68" (used on units without hood relay)               |
| 6    | 8071612 | Clamp, 3/8 Connector  |
| 7    | 2401312 | Bracket, Power Out Cord Tie Down  |
|      |         | <b>See Wiring Diagram 8052002 in FQGLA30-T Service Manual for cable locations</b> |
| *    | 8075564 | Cord, Power Distribution Box to Left Component Box                                |
| *    | 8075565 | Cord, Power Distribution Box to FIB Box   |

\* Not illustrated.  
√ Recommended parts.



### 1.4.3 ATO (Automatic Top Off)/FIB (Filter Interface Board) /Filter Box Components

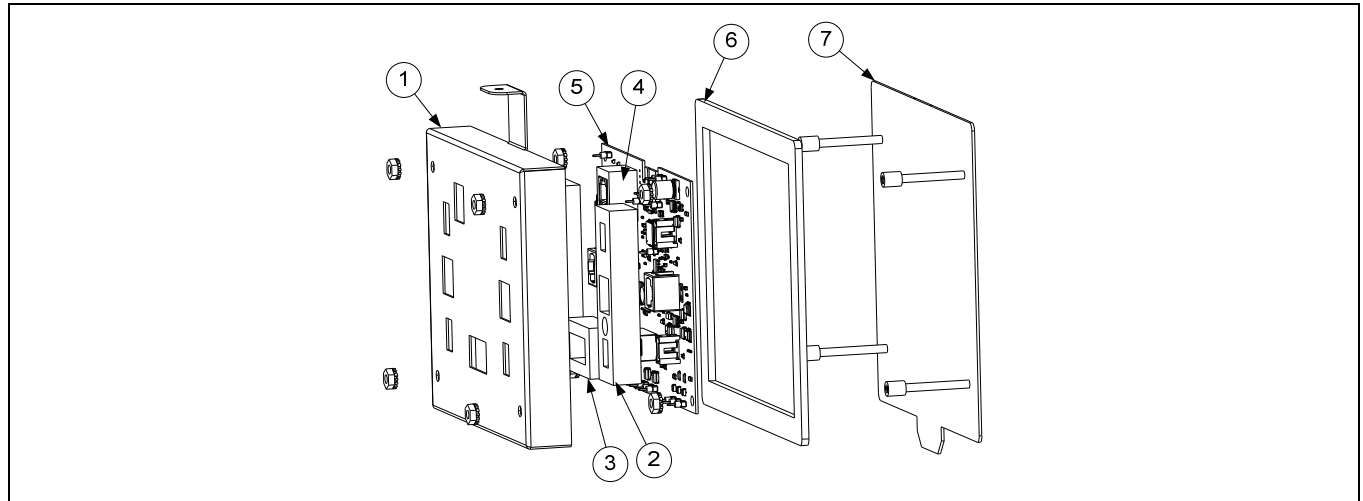


| ITEM | PART #  | COMPONENT  |
|------|---------|--|
|      | 1085993 | Box Assembly, ATO/FIB Filter   |
| √ 1  | 1087513 | Board, FIB w/ Software <b>General Market/ Burger King</b>  |
|      | 1087535 | Board, FIB w/ Software <b>Taco Bell</b>  |
| √ 2  | 8075855 | Power Supply, 24VDC 130W ATO Actuators, Filter Pump, Top Off Pump  |
| √ 3  | 8075362 | Transformer, 24VAC 80VA 100V-240V  |
| √ 4  | 8074482 | Relay, Filter Pump DPDT 24VDC  |
| √ 5  | 8075570 | Fuse, 250VAC 3.5A Fast Acting  |
| 6    | 8071321 | Holder, Fuse   |
| 7    | 8075369 | Receptacle, C14 IEC Cord Outlet  |
| *    | 2401312 | Bracket, Power Out Cord Tie Down   |
| 8    | 8075368 | Receptacle, C14 IEC Cord Inlet   |
| *    | 2401311 | Bracket, Power In Cord Tie Down  |
| 9    | 8075803 | Harness, Bulk Oil/Top off FIB  |
| 10   | 1086005 | Wire Assembly, Solid Shortening Heater Switch  |
| 11   | 8075804 | Harness, FIB Power Supply/Heat tapes   |
| 12   | 8071926 | Bushing, .875 Split  |
| 13   | 8075974 | Power Supply, 24VDC, 15W for KCCM SUI board  |
| 14   | 4060069 | PCB, Assy, CAN Bridge (Converts OQS CAN from 125K to 500K) Need PN of PCB w/ SW  |
| *    | 8076128 | Cable, Can Bridge Power/Communication 12" (Connects FIB to CAN Bridge board)   |
| *    | 8076106 | Adapter, RJ11 CAN to Legacy 6-pin CAN (Micro Mate & Lock)(connects OQS sensor/SIB bd 5")<br>Used w/out CAN Bridge Board. |
| *    | 2401088 | Cover, ATO/Filter Box  |
|      |         | <b>See Wiring Diagram 8052002 in FQGLA30-T Service Manual for cable locations</b>  |
| *    | 8075565 | Cord, Power Distribution Box to FIB Box, Filter Pump   |
| *    | 8075632 | Terminator, CAN End Communication RJ11   |
| *    | 8075551 | Cable, C-Bus Right SIB to FIB (Filtration Interface Board)   |
| *    | 8075554 | Cable, C-Bus w/ power 85" (Connects SIB to FIB)  |
| *    | 8075810 | Cable, FIB to VIB Actuator Power   |

\* Not illustrated.

√ Recommended parts.

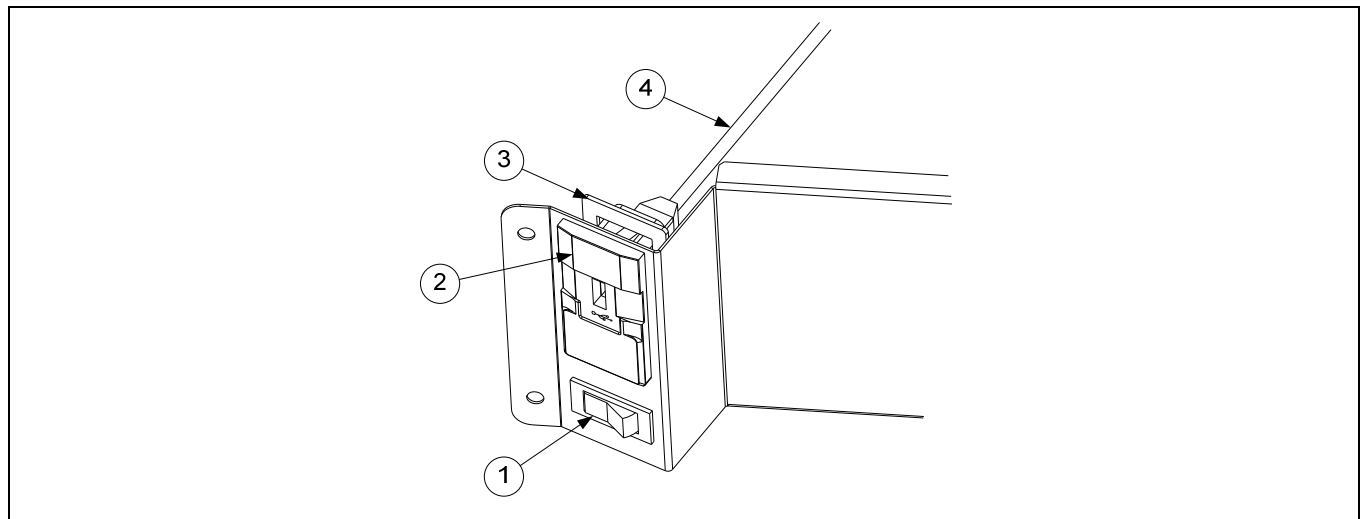
### 1.4.4 VIB (Valve Interface Board) Components



| ITEM | PART #  | COMPONENT  |
|------|---------|--|
| √    | 1087514 | VIB Board Assembly                                   |
| 1    | 8242346 | Cover, VIB Board Housing                             |
| 2    | 8161015 | Gasket, Actuator Power VIB                           |
| 3    | 8161013 | Gasket, 20 pin VIB Connector                         |
| 4    | 8161014 | Gasket, P-Bus VIB Connector                          |
| 5    | 1087512 | Board, VIB with SW <b>General Market/Burger King</b> |
|      | 1087534 | Board, VIB with SW <b>Taco Bell</b>                  |
| 6    | 8160820 | Seal, Linear Actuator Board                          |
| 7    | 1087280 | Panel, Assy VIB Box Bottom Stud                      |

√ Recommended parts.

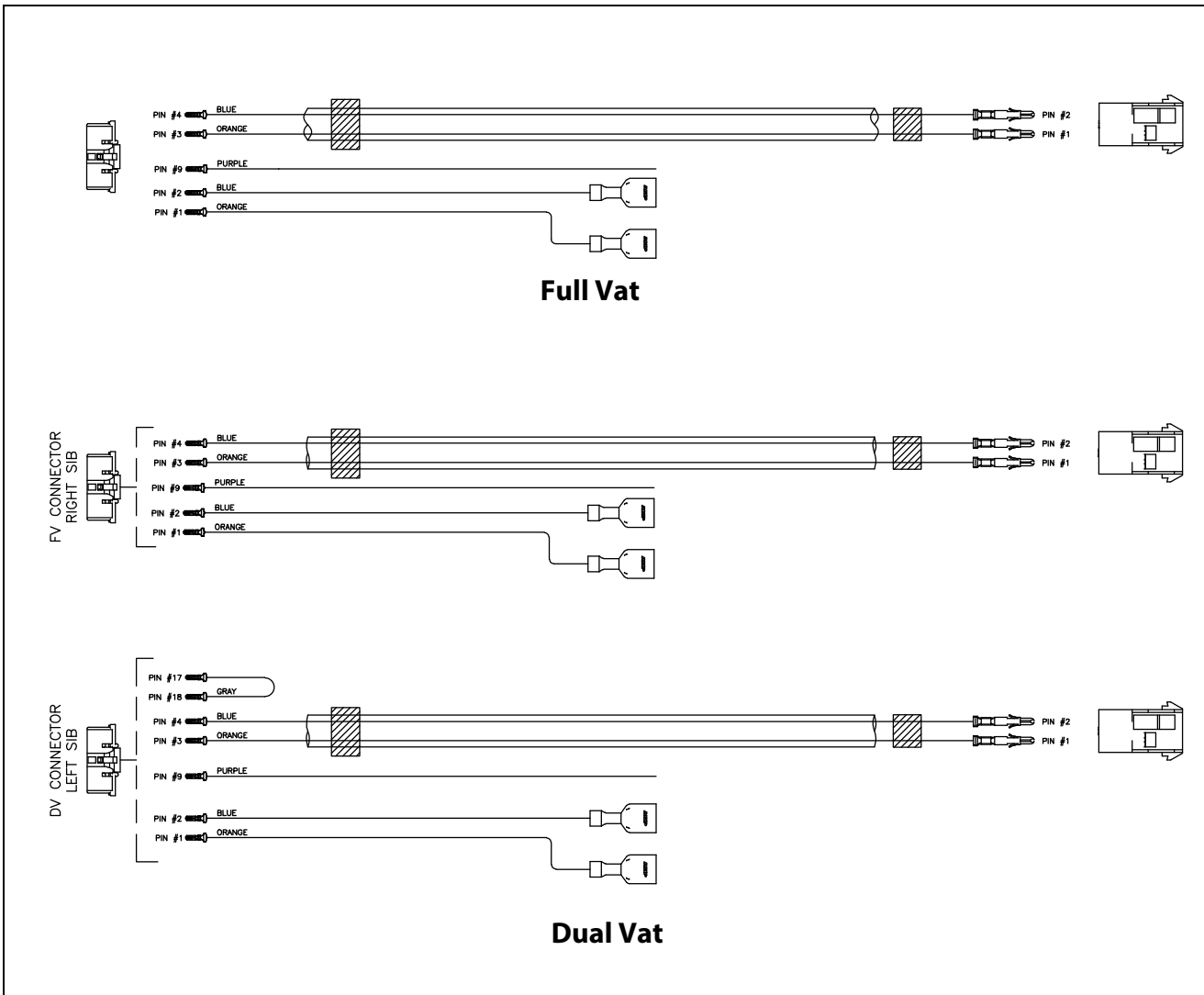
### 1.4.5 Power Reset Switch and USB Connector



| ITEM | PART #  | COMPONENT                      |
|------|---------|--------------------------------|
|      | 1085728 | Bracket Assy, USB Mounting Gas |
| 1    | 8072659 | Switch                         |
| 2    | 8074989 | Bezel, USB Port                |
| 3    | 2207520 | Plate, Backing USB Bezel       |
| 4    | 8074990 | Cable, USB                     |

## 1.5 Wiring

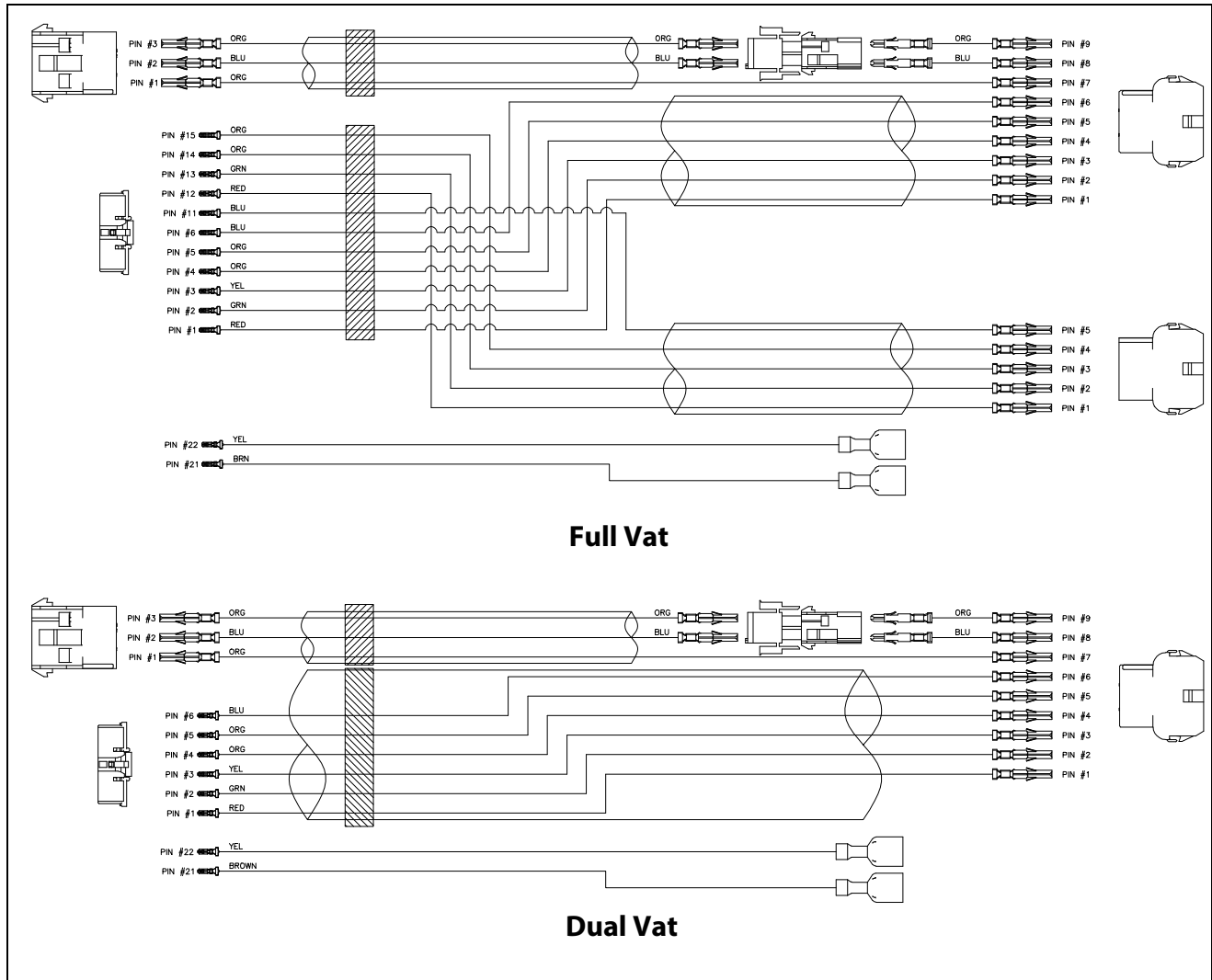
### 1.5.1 Main Wiring Harnesses SIB J1 to Components



| ITEM | PART #  | COMPONENT                            |
|------|---------|--------------------------------------|
|      | 8075863 | Harness, Modular Wiring Gas Full Vat |
|      | 8075864 | Harness, Modular Wiring Gas Dual Vat |

See 8052048 and 8052049 in the FQGLA30-T Service Manual for wiring diagrams.

## 1.5.2 Ignition Wiring Harnesses SIB J2 to Components

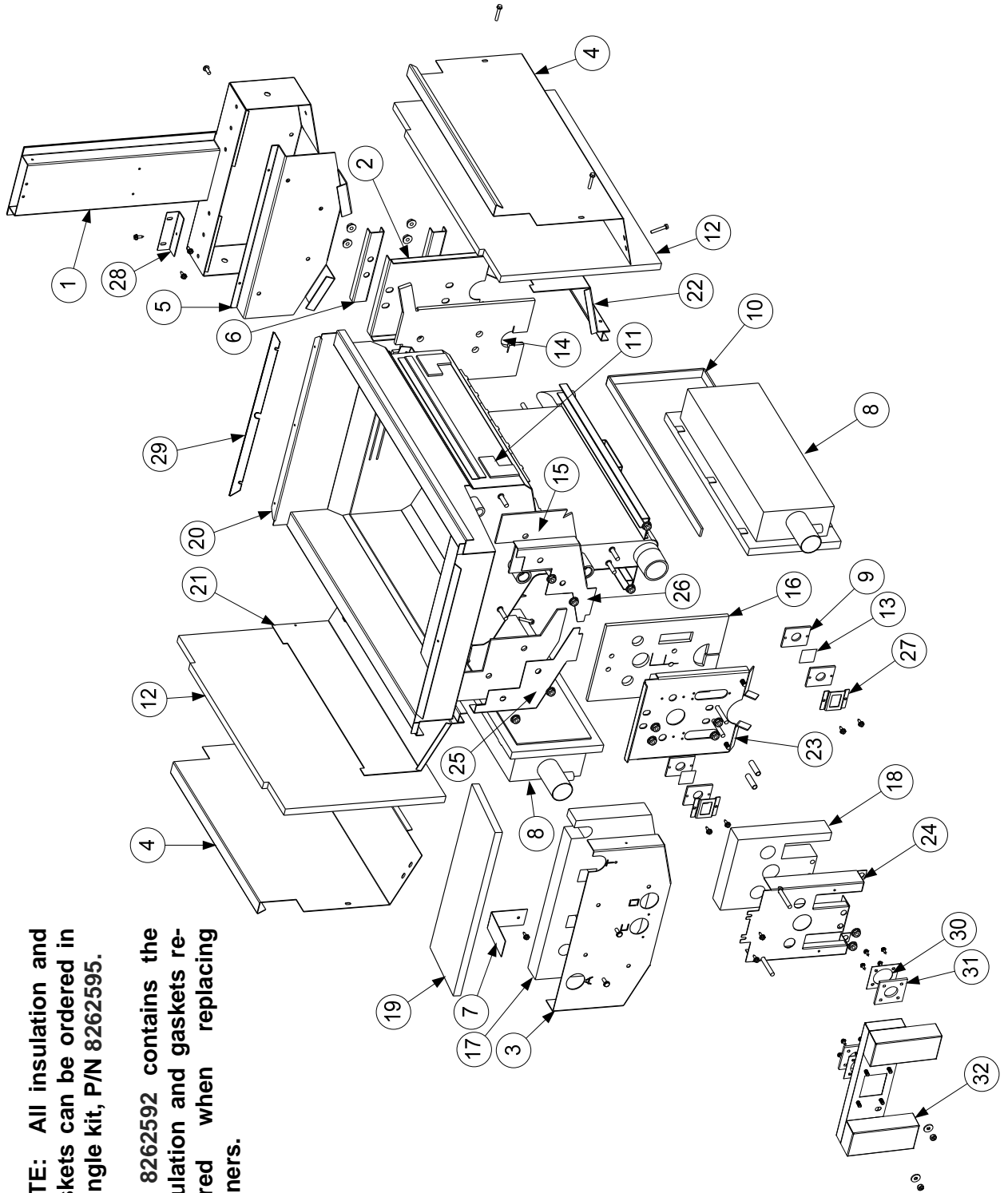


| ITEM | PART #  | COMPONENT  |
|------|---------|--|
|      | 8075380 | Harness, Ignition Wiring Gas Full Vat                            |
|      | 8075379 | Harness, Ignition Wiring Gas Dual Vat (one per side of dual vat) |

See 8052048 and 8052049 in the FQGLA30-T Service Manual for wiring diagrams.

## 1.6 Frypots and Associated Components

### 1.6.1 Full-Vat Frypot Components



**NOTE:** All insulation and gaskets can be ordered in a single kit, P/N 8262595.

Kit 8262592 contains the insulation and gaskets required when replacing burners.

### 1.6.1 Full-Vat Frypot Components cont.

| ITEM | PART #    | COMPONENT                                    |
|------|-----------|--|
|      | 1085642SP | Frypot Assembly Full-Vat M5G30U (NAT/PRO)    |
|      | 8262595   | Insulation Kit, Complete Full-Vat            |
|      | 8262592   | Insulation Kit, Burner Full-Vat              |
| 1    | 1085646   | Flue Assembly, Full-Vat                      |
| 2    | 8238175   | Back, Lower Full-Vat Combustion Chamber      |
| 3    | 2206529   | Cover, Full-Vat Upper Insulation             |
| 4    | 2209665   | Cover, Outer Blanket                         |
| 5    | 2309309   | Plate, FV Collector Mounting                 |
| 6    | 2202851   | Brace, FV Rear Insulation                    |
| 7    | 2202920   | Brace, Foam Deck Insulation                  |
| √ 8  | 8103435   | Burner, Universal Replacement Low Oil Volume |
| 9    | 8120356   | Insulation, Burner Sight Glass               |
| 10   | 8160900   | Insulation, Burner                           |
| 11   | 8120706   | Insulation, Upper Burner Rail                |
| 12   | 8121029   | Insulation, Combustion Chamber Side          |
| 13   | 8140048SP | Glass, Burner Sight                          |
| 14   | 8160837   | Insulation, FV Rear Lower                    |
| 15   | 8160731   | Insulation, FV LH/RH Front Seal              |
| 16   | 8160976   | Insulation, FV Lower Inner Front             |
| 17   | 8160733   | Insulation, FV Front Upper                   |
| 18   | 8160978   | Insulation, FV Outer Front                   |
| 19   | 8160746   | Insulation, Foam Deck                        |
| 20   | 8238751   | Frypot, FV M5G30U                            |
| 21   | 8238193   | Retainer, FV LH Upper Burner                 |
| 22   | 8238194   | Retainer, FV RH Upper Burner                 |
| 23   | 8238577   | Cover, FV Front Combustion                   |
| 24   | 8238602   | Cover, FV Lower Front Insulation             |
| 25   | 8242164   | Front Upper Seal Weldment, FV LH             |
| 26   | 8242165   | Front Upper Seal Weldment, FV RH             |
| 27   | 9001031   | Retainer, Burner Sight Glass                 |
| 28   | 9300818   | Bracket, Flue to Pot                         |
| 29   | 2209667   | Strip, Pot/Fluecap                           |
| 30   | 9001049   | Retainer, Plenum Gasket                      |
| 31   | 8160057   | Gasket, Plenum                               |
| 32   | 8238642   | Plenum, Full-Vat Domestic                    |
|      | 1084762   | Plenum, Full-Vat Export (Non-CE, Non-Japan)  |
|      | 1086671   | Plenum, Full-Vat Export (Japan, CE)          |
| *    | 8160981   | Gasket, Ignitor Solaronics                   |
| *    | 9102474   | Pot-to-Pot Gap Clip                          |

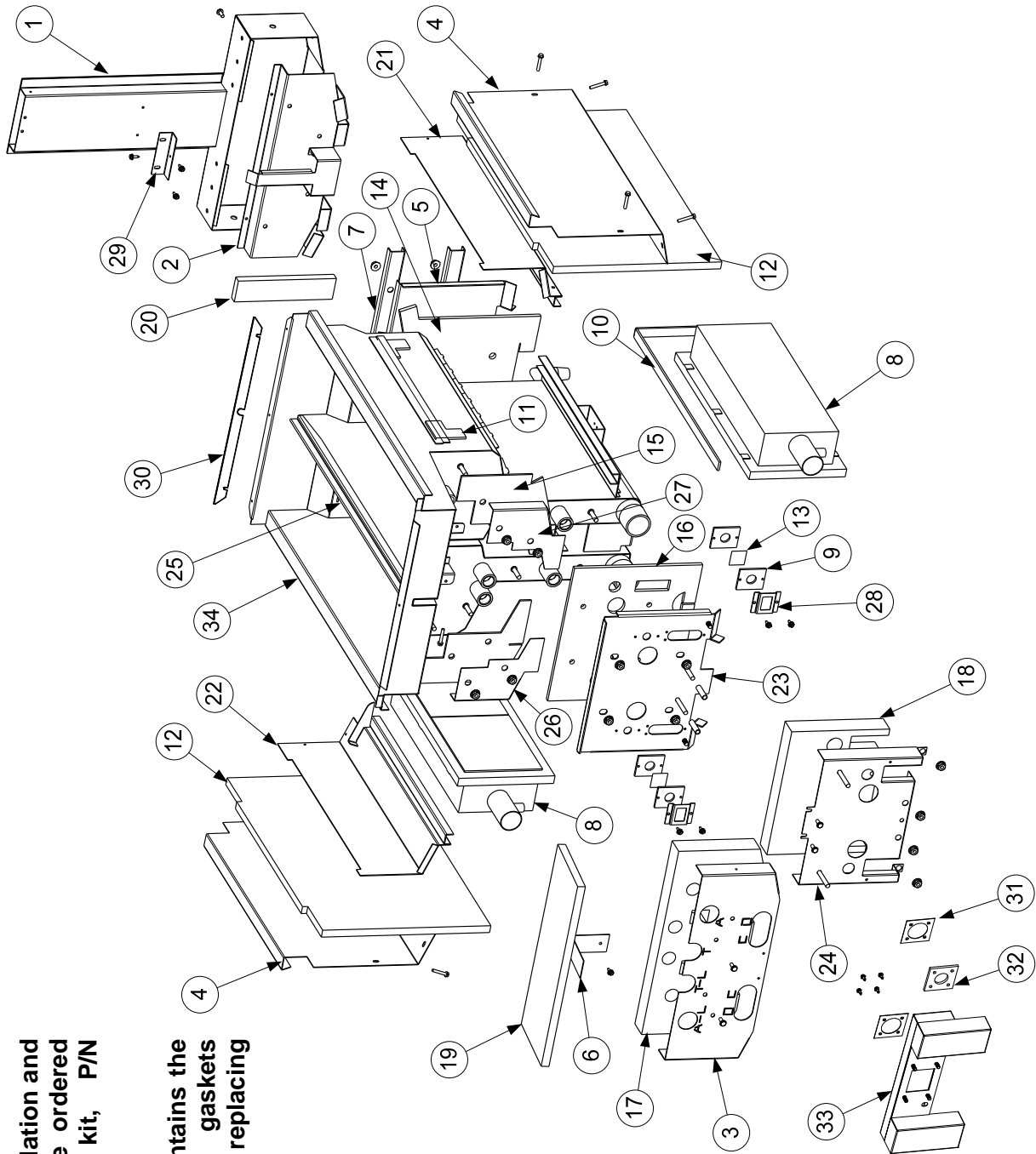
\* Not illustrated.

√ Recommended parts.

## 1.6.2 Dual-Vat Frypot Components

**NOTE:** All insulation and gaskets can be ordered in a single kit, P/N 8262596.

Kit 8262593 contains the insulation and gaskets required when replacing burners.



## 1.6.2 Dual-Vat Frypot Components cont.

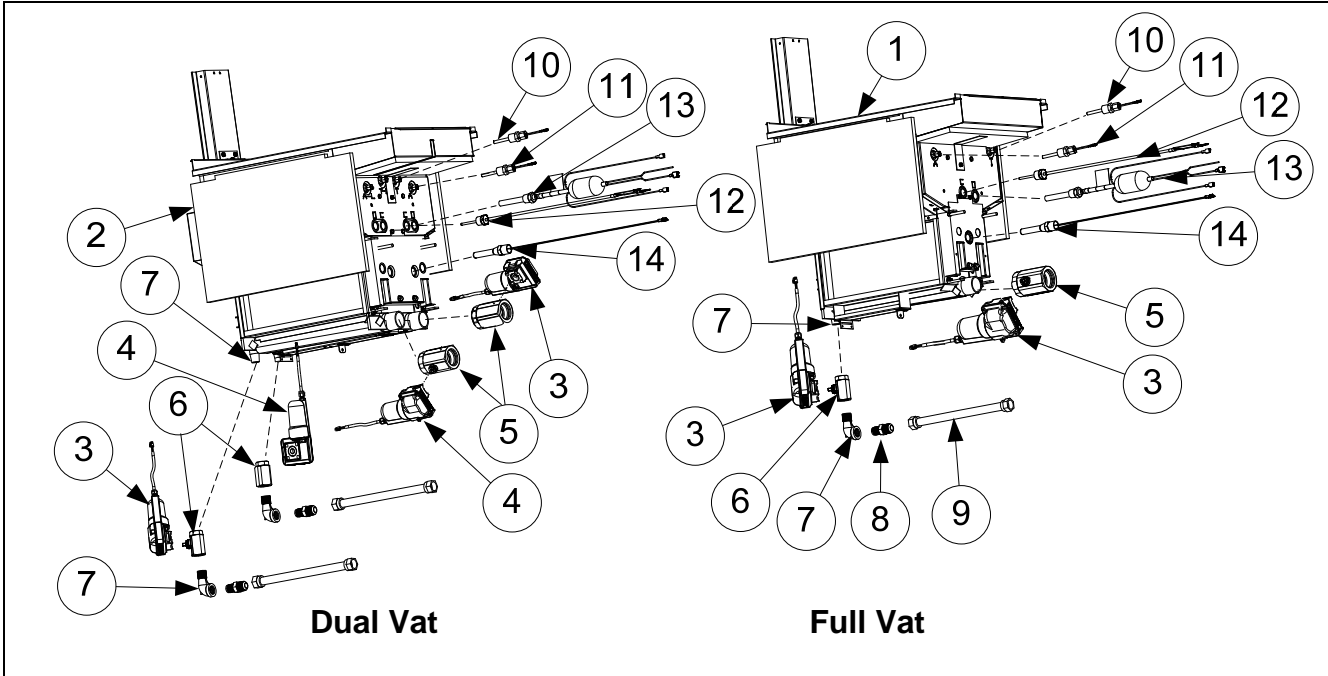
| ITEM | PART #    | COMPONENT                                   |
|------|-----------|---|
| *    | 1085643SP | Frypot Assembly Dual-Vat M5G30UD (NAT/PRO)  |
| *    | 8262596   | Insulation Kit, Complete Dual-Vat           |
| *    | 8262593   | Insulation Kit, Burner Dual-Vat             |
| 1    | 1085647   | Flue Assembly, Dual-Vat                     |
| 2    | 1083907   | Plate Assembly, Dual-Vat Collector          |
| 3    | 2206530   | Cover, Dual-Vat Upper Insulation            |
| 4    | 2209714   | Cover, Dual-Vat Outer Blanket               |
| 5    | 8238176   | Back, Dual-Vat Lower Combustion Chamber     |
| 6    | 2202920   | Brace, Foam Deck Insulation                 |
| 7    | 2202972   | Brace, Dual-Vat Rear Insulation             |
| √ 8  | 8103435   | Burner, Universal Replacement               |
| 9    | 8120356   | Insulation, Burner Sight Glass              |
| 10   | 8160900   | Insulation, Burner                          |
| 11   | 8120706   | Insulation, Upper Burner Rail               |
| 12   | 8121029   | Insulation, Combustion Chamber Side         |
| 13   | 8140048SP | Glass, Burner Sight                         |
| 14   | 8160838   | Insulation, Dual-Vat Rear Lower             |
| 15   | 8160741   | Insulation, Dual-Vat LH/RH Front Seal       |
| 16   | 8160977   | Insulation, Dual-Vat Lower Inner Front      |
| 17   | 8160743   | Insulation, Dual-Vat Front Upper            |
| 18   | 8160979   | Insulation, Dual-Vat Outer Front            |
| 19   | 8160746   | Insulation, Foam Deck                       |
| 20   | 8120688   | Insulation, Flue Collection                 |
| 21   | 8238196   | Retainer, Dual-Vat RH Upper Burner          |
| 22   | 8238195   | Retainer, Dual-Vat LH Upper Burner          |
| 23   | 8238578   | Cover, Dual-Vat Front Combustion            |
| 24   | 8238605   | Cover, Dual-Vat Lower Insulation            |
| 25   | 8242352   | Riser W/A Dual-Vat Frypot                   |
| 26   | 8242166   | Dual-Vat LH Upper W/A Seal                  |
| 27   | 8242167   | Dual-Vat RH Upper W/A Seal                  |
| 28   | 9001031   | Retainer, Sight Glass                       |
| 29   | 9300818   | Bracket, Flue to Pot                        |
| 30   | 2209667   | Strip, Pot/Fluecap                          |
| 31   | 9001049   | Retainer, Plenum Gasket                     |
| 32   | 8160057   | Gasket, Plenum                              |
| *    | 8160981   | Gasket, Ignitor Solaronics                  |
| 33   | 8238643   | Plenum, Dual-Vat Domestic                   |
|      | 1084763   | Plenum, Dual-Vat Export (Non-CE, Non-Japan) |
|      | 1086672   | Plenum, Dual-Vat Export (Japan, CE)         |
| 34   | 8238752   | Frypot, Dual-Vat M5G30UD                    |
| *    | 9102474   | Pot-to-Pot Gap Clip                         |

\* Not illustrated.

√ Recommended parts.



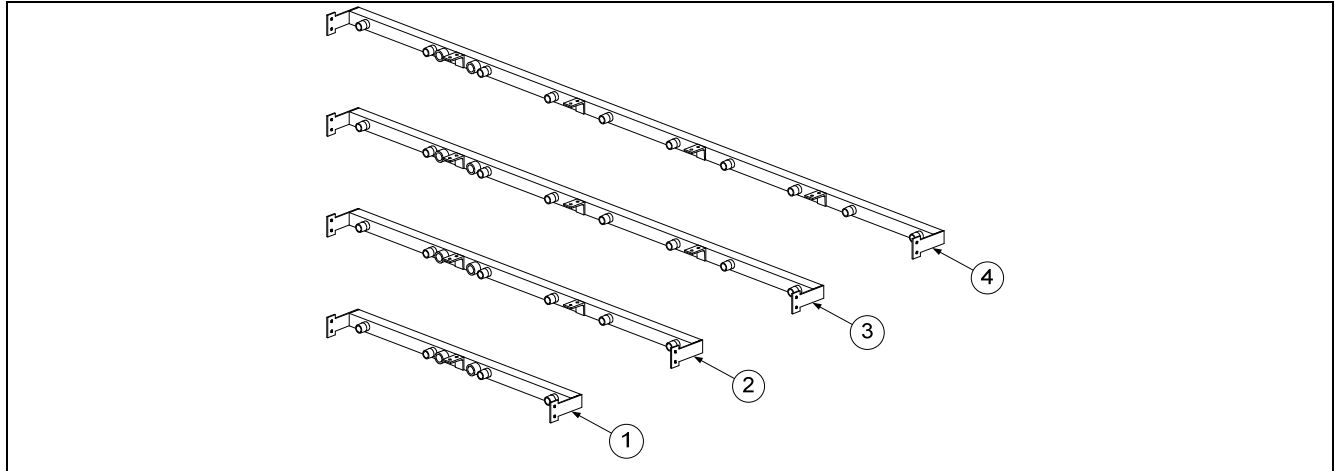
### 1.6.3 Frypot Assemblies and Associated Parts



| ITEM | PART #    | COMPONENT   |
|------|-----------|---|
| 1    | 1085642SP | Frypot Assembly, Full-Vat M5G30U Natural/Propane                                  |
| 2    | 1085643SP | Frypot Assembly, Dual-Vat M5G30UD Natural/Propane                                 |
| √ 3  | 8075809   | Actuator, Rotary 24VDC BLUE LH  |
| √ 4  | 8075808   | Actuator, Rotary 24VDC BLACK RH   |
| √ 5  | 8104353   | Valve, 1¼" NPT Drain Rotary Actuator M5G30U                                       |
| √ 6  | 8103754   | Valve, ½" NPT Return Rotary Actuator  |
| 7    | 8130908   | Adaptor, ½" NPT M/F 90°   |
| 8    | 8101668   | Adaptor, Male ⅝" OD x ½"  |
| 9    | 8101055   | Flexline, ⅝" OD x 11.50" Long   |
| √ 10 | 8263286   | Probe, ATO (Topoff) RTD Kit   |
| 11   | 8263287   | Probe, VIB (Auto Filtration) RTD Kit (only units with VIB probes)                 |
| *    | 8130617   | Fitting, 3/16"CC x ¼" (Compression fitting used in probe kits)                    |
| *    | 8158000   | Loctite 567, Tube 6 ML  |
| √ 12 | 8263285   | Probe, Temperature Cooking Kit  |
| 13   | 1085578   | Sensor Assy, Oil 100V (only units with OIB sensors)                               |
|      | 8122302   | Sensor Assy, Oil 120V (only units with OIB sensors)                               |
|      | 8074947   | Sensor Assy, Oil 220V <b>International</b> (only units with OIB sensors)          |
|      | 8074935   | Sensor Assy, Oil 230V <b>International</b> (only units with OIB sensors)          |
|      | 8074942   | Sensor Assy, Oil 240V and 250V <b>International</b> (only units with OIB sensors) |
| √ 14 | 8261177   | Thermostat Assembly, HE FM High-Limit 425°F/218°C Kit                             |

√ Recommended parts.

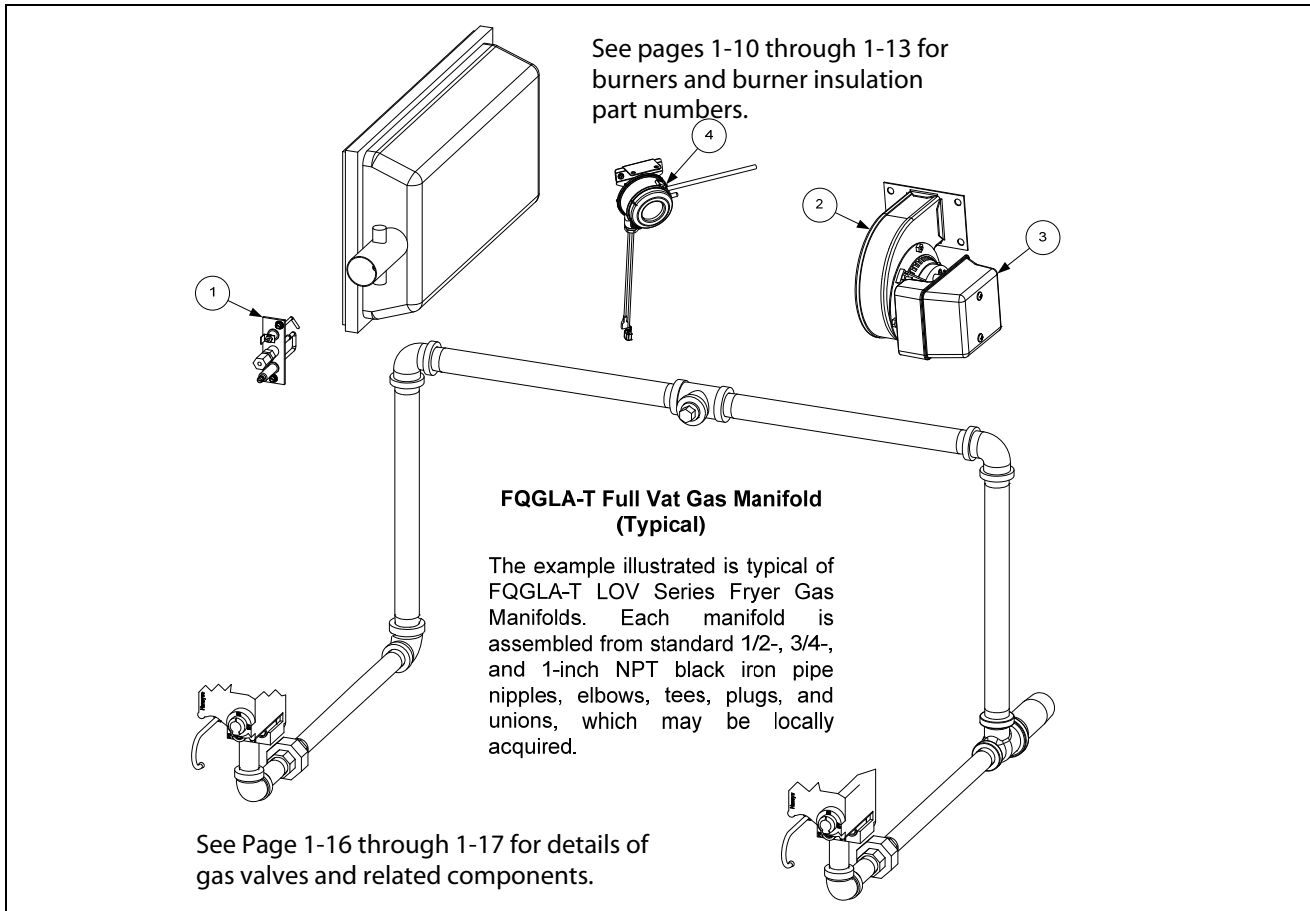
## 1.7 Oil Return Manifolds



| ITEM | PART #  | COMPONENT   |
|------|---------|---|
| 1    | 8104414 | Manifold, Two-Station Fryer Full Vat                  |
|      | 8104413 | Manifold, Two-Station Fryer Dual or Mixed Vats        |
| 2    | 8104378 | Manifold, Three-Station Fryer Full Vat                |
|      | 8104392 | Manifold, Three-Station Fryer Dual or Mixed Vats      |
| 3    | 8104418 | Manifold, Four-Station Fryer Full Vat                 |
|      | 8104417 | Manifold, Four-Station Fryer Dual or Mixed Vats       |
| 4    | 8104419 | Manifold, Five-Station Fryer Full, Dual or Mixed Vats |
| *    | 8130907 | Cap, 15/16-inch Valve                                 |

\* Not illustrated

## 1.8 Gas Supply and Combustion System Components

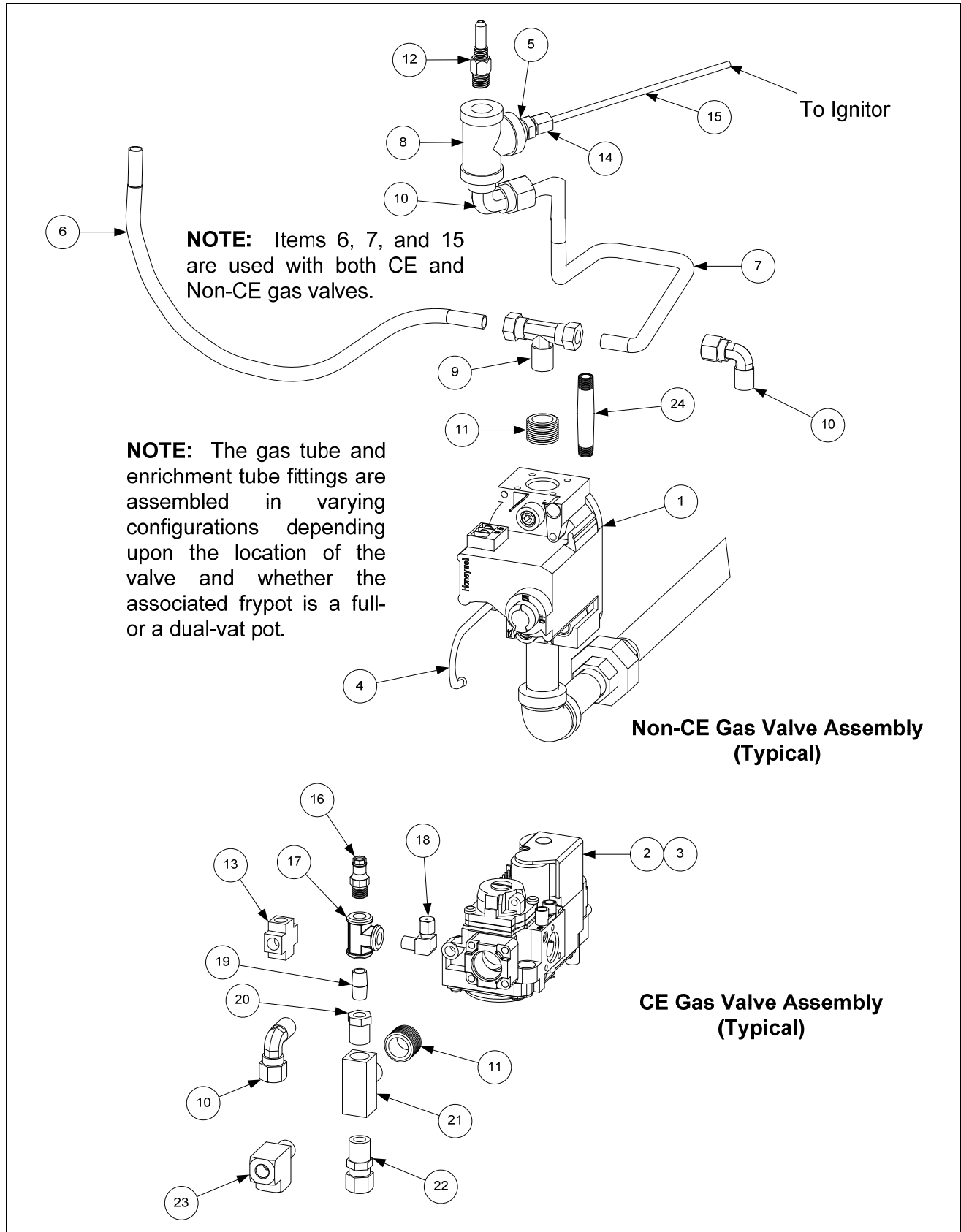


| ITEM | PART #    | COMPONENT   |
|------|-----------|---|
| √ 1  | 8263053   | Ignitor<br>Natural Gas (G20, G25) (includes gasket 8160981, which may be ordered separately and enrichment tubes) |
|      | 8263054   | Natural Gas (G20, G25) (includes gasket 8160981, which may be ordered separately)                                 |
|      | 8263189   | Propane (G30, G31) (includes gasket 8160981, which may be ordered separately and enrichment tubes)                |
|      | 8262994   | Propane (G30, G31) (includes gasket 8160981, which may be ordered separately)                                     |
| √ 2  |           | Blower Assembly, Combustion Air (includes harness and Item 3)   |
|      | 1086012SP | 100V 50/60 Hz CE (Right) CE (Wide Body) Dual Vat – 7 slots open   |
|      | 1085699SP | 100V 50/60 Hz CE (Right) CE (Wide Body) Full Vat – 8 slots open   |
|      | 1062999SP | 100V 50/60 Hz CE (Right) 60Hz Specific  |
|      | 1081957SP | 115V-120V 50/60 Hz (Right)  |
|      | 1087155SP | 220V 60 Hz (Right)  |
|      | 1062998SP | 208-240V 50/60 Hz (Right) Non-CE International  |
|      | 1063001SP | 230V 50/60 Hz CE (Right) CE (Wide Body)   |
| 3    | 8160554   | Cover, Blower Motor (component of all blowers listed above)   |
| *    | 1086122   | Harness Assembly, Blower Motor DV (component of blowers listed above)   |
|      | 1086017   | Harness Assembly, Blower Motor FV/DV (component of blowers listed above)  |
| 4    | 1086657   | Switch, Air Pressure Assembly FV (8072262 switch alone) CE and Export   |
|      | 1086658   | Switch, Air Pressure Assembly DV (8072262 switch alone) CE and Export   |

\* Not illustrated.

√ Recommended parts.

## 1.9 Gas Valves and Associated Components



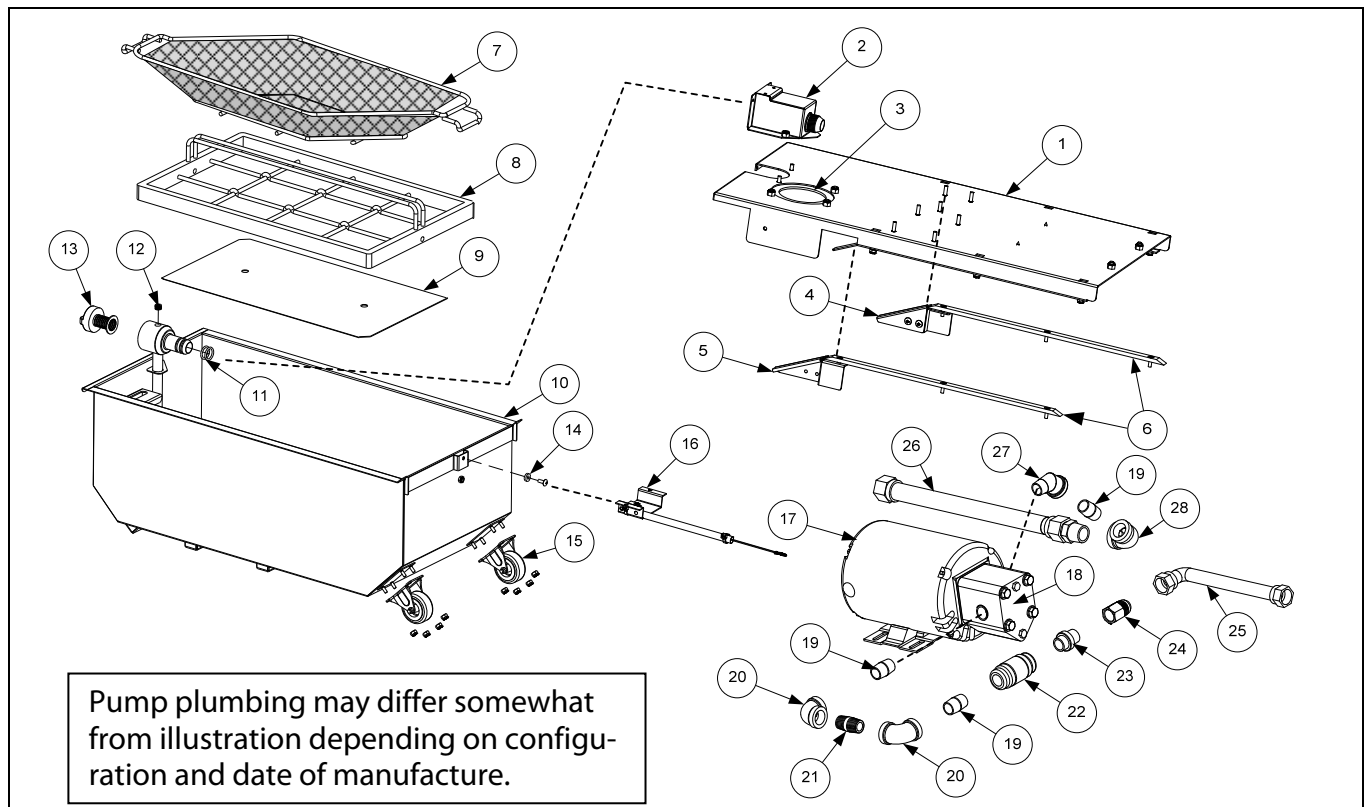
## 1.9 Gas Valves and Associated Components cont.

| ITEM | PART #         | COMPONENT  |
|------|----------------|--|
|      | <b>8262969</b> | <b>Gas Conversion Kits</b>   |
|      | <b>8262970</b> | <b>Natural to Propane (LP) Full Vat</b>  |
|      | <b>8262971</b> | <b>Natural to Propane (LP) Dual Vat</b>  |
|      | <b>8262972</b> | <b>Propane(LP) to Natural Full Vat</b>   |
|      |                | <b>Propane(LP) to Natural Dual Vat</b>   |
| √ 1  |                | Valve, Non-CE Gas  |
|      | 8104339        | Natural Gas (G20, G25) 3.2WC   |
|      | 8100802        | Propane Gas (G30, G31)   |
|      | 8263296        | Kit Natural Gas Full Vat w/ flexlines and hardware                             |
|      | 8263297        | Kit Natural Gas Dual Vat w/ flexlines and hardware                             |
|      | 8261123        | Propane Gas (G30, G31)   |
|      | 8263298        | Kit, Propane Gas Full Vat w/ flexlines and hardware                            |
|      | 8263299        | Kit, Propane Gas Dual Vat w/ flexlines and hardware                            |
| √ 2  | 8101715        | Valve, CE Gas (G20, G25, G30, G31)   |
| 3    | 8101041        | Accessory Kit (contains parts to adapt Item 2 to specific fryer configuration) |
| 4    | 8100691        | Tube, 1/8-inch Vent  |
| 5    | 8103147        | Bushing, 3/4-inch OD x 1/2 -inch ID NPT Flush                                  |
| 6    | 8101355        | Gas Line, 3/8-inch OD X 15-inch SS Flexible                                    |
| 7    | 8101354        | Gas Line, 3/8-inch OD X 12-inch SS Flexible                                    |
|      | 8101353        | Gas Line, 3/8-inch OD X 9-inch SS Flexible (Used on some split pots)           |
| 8    | 8130449        | Tee, 1/4 -inch NPT Brass   |
| 9    | 8130301        | Tee, 1/4-inch Male NPT to 3/8-inch Tube  |
| 10   | 8130302        | Elbow, 1/4-inch Male NPT to 3/8-inch Tube 90° (used on DV valve)               |
| 11   | 8130304        | Bushing, 1/2-inch NPT to 1/4-inch NPT Flush Reducing                           |
| 12   |                | Orifice, Burner  |
|      | 8103977        | 1.88mm 75% Butane/25% Butane (Standard Elevation)                              |
|      | 8103865        | 1.95mm Propane/Butane (G30, G31)   |
|      | 8103860        | 2.05 mm Propane/Butane (G30, G31) (0-4999 Ft, 0-1524 M)                        |
|      | 8103863        | 2.10 mm Propane/Butane (G30, G31) (5000-6999 Ft, 1525-2133 M)                  |
|      | 8103867        | 2.84mm Natural Gas (G20, G25) Australia Only DV                                |
|      | 8103866        | 2.92mm Natural Gas (G20, G25) Australia Only FV                                |
|      | 8103864        | 3.18 mm Natural Gas (G20, G25) (0-4999 Ft, 0-1524 M) CE                        |
|      | 8103861        | 3.26 mm Natural Gas (G20, G25) (0-4999 Ft, 0-1524 M)                           |
|      | 8103862        | 3.40 mm Natural Gas (G20, G25) (5000-6999 Ft, 1525-2133 M)                     |
| 13   | 8130378        | Fitting, 1/8-inch NPT Cross  |
| 14   | 8130340        | Adapter, 1/8-inch NPT to 1/8-inch Tube   |
| 15   | 8104238        | Tube, 1/8-inch OD X 5.40-inch Enrichment FV                                    |
|      | 8104239        | Tube, 1/8-inch OD X 4.80-inch Enrichment DV                                    |
| 16   | 8101176        | Tap, 1/8-inch NPT Pressure   |
| 17   | 8130377        | Tee, 1/8-inch NPT Female   |
| 18   | 8130354        | Elbow, 1/8-inch NPT X 1/8-inch Tube Compression                                |
| 19   | 8130016        | Nipple, 1/8-inch NPT X Close   |
| 20   | 8101006        | Bushing, 1/4-inch NPT to 1/8-inch NPT Reducing                                 |
| 21   | 8130495        | Tee, 1/4-inch Male NPT to Female NPT   |
| 22   | 8101025        | Connector, 1/4-inch Male NPT to 3/8-inch Tube                                  |
| 23   | 8101026        | Tee, 1/4-inch Male NPT to Female NPT Street                                    |
| 24   | 8130700        | Nipple, 1/4-inch NPT x 3-inch  |

√ Recommended parts.

## 1.10 Filtration System Components

### 1.10.1 Filter Pan, Pump, Motor, and Associated Parts



| ITEM | PART #    | COMPONENT   |
|------|-----------|---|
| 1    | 1087377   | Bridge, Filter Pan Assembly                             |
| 2    | 8239298   | Mount, Female Suction                                   |
| 3    | 8160929   | Gasket, Filter  |
| 4    | 1086673   | Ramp Assy, Left Filter                                  |
| 5    | 1086674   | Ramp Assy, Right Filter                                 |
| 6    | 8160927   | Slide, Filter Pan                                       |
|      | 1086263SP | Pan, Filter 14 inch ATO                                 |
| 7    | 8104153   | Basket, Crumb Tray 14 inch                              |
| 8    | 8104152   | Hold-Down Ring 14 inch                                  |
| 9    | 8122265   | Sana Grid Filter Screen, 14 inch                        |
| 10   | 8239011   | Pan, Filter 14 inch                                     |
| √ 11 | 8263288   | O-Ring (8161041) (Qty. of 6; used w/ Item 10)           |
| 12   | 8130989   | Plug, 1/8-inch NPT Socket Head Pipe (used with Item 10) |
| 13   | 8238335   | Screen, Suction Line Filter                             |
| *    | 2401086   | Wrench, Filter Screen                                   |
| *    | 8104167   | Lanyard, Filter Screen Wrench                           |
| 14   | 8103007   | Magnet, Pull Ring                                       |
| 15   | 8102807   | Caster, 2-inch Rigid                                    |
| 16   | 1082218   | Assembly, Filter Pan Switch Sensor                      |
| √ *  | 1065876SP | Sensor Assembly, Magnet Position                        |
| √ 17 |           | Motor and Gasket Kit                                    |
|      | 8261785   | 100V 50/60 Hz   |
|      | 8261712   | 115V 50/60 Hz   |
|      | 8261756   | 208V 50/60 Hz   |

\* Not illustrated.

√ Recommended parts

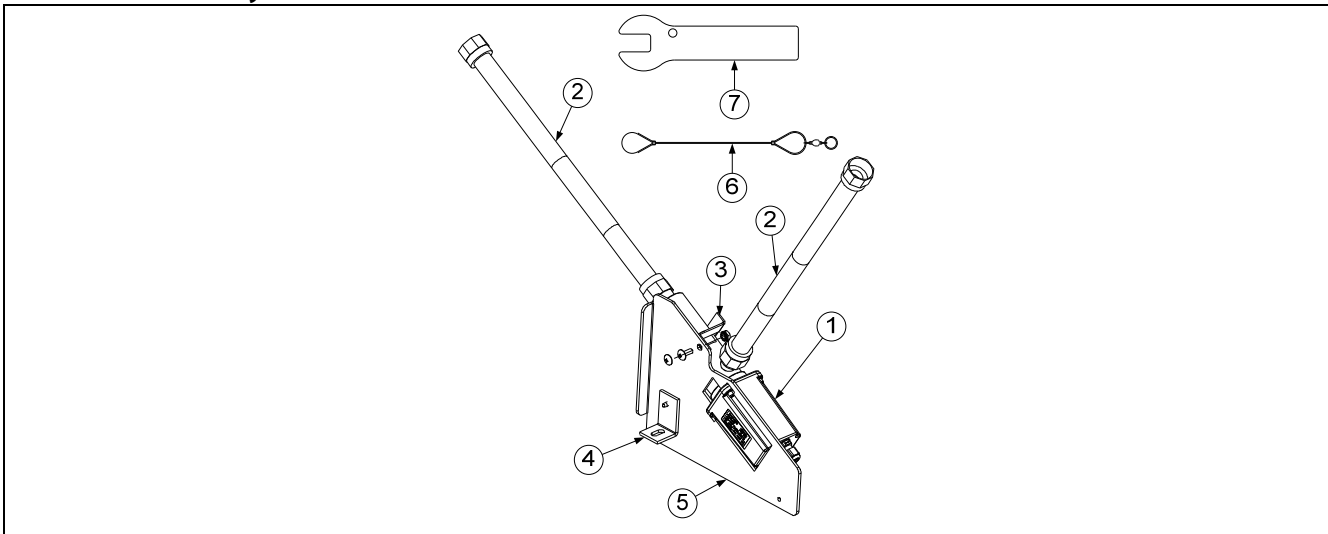
### 1.10.1 Filter Pan, Pump, Motor, etc.

| ITEM | PART #  | COMPONENT  |
|------|---------|--|
|      | 8261270 | 220-240V 50/60 Hz  |
|      | 8261755 | 250V 50/60 Hz  |
| *    | 1084728 | Cord, Filter Motor Power   |
| √ 18 | 8263191 | Pump and Gasket Kit, 4 GPM   |
|      | 8160093 | Gasket, Pump/Motor   |
| *    | 8091062 | Cap Screw, 5/16-inch-18 4.00" NC Hex (Connects pump to motor.)(8090194 washer)                 |
| 19   | 8130022 | Nipple, 1/2-inch x Close NPT BM  |
| 20   | 8130062 | Elbow, 1/2-inch BM 90°   |
| 21   | 8130087 | Nipple, 1/2-inch x 1.50-inches NPT BM  |
| 22   | 8100667 | Check Valve 1/2-inch NPT 1 PSI   |
| 23   | 8103738 | Adapter, Check Valve Close NPT   |
| 24   | 8101669 | Adapter, Female 7/8-inch OD x 1/2-inch   |
| 25   | 8101043 | Flexline, 1/2-inch x 9.50-inch (to oil manifold)   |
| 26   | 8104278 | Flexline, 3/4-inch x 14-inch Oil Return (from filter pan)                                      |
| 27   | 8130342 | Elbow, Street 45° x 1/2-inch NPT   |
| 28   | 8130068 | Elbow, Reducing 3/4-inch x 1/2-inch  |
| *    | 8101668 | Adaptor, Male 5/8" OD x 1/2" - Connects between elbow on incoming side of pump and OQS sensor. |
| *    | 1063782 | Heater Strip Assembly, 100-120V 25W 18"  |
| *    | 1065427 | Heater Strip Assembly, 208-250V 25W 18"  |

\* Not illustrated.

√ Recommended parts.

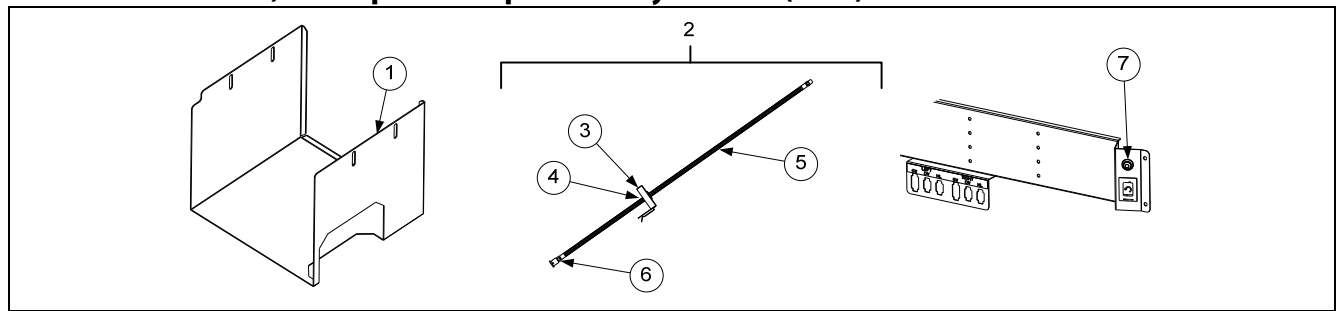
### 1.10.2 Oil Quality Sensor (OQS) and Associated Parts



| ITEM | PART #  | COMPONENT   |
|------|---------|---|
|      | 826xxxx | Kit, OQS FQ-Touch Gas 2-Batt. (Kit to add to existing FQ-Touch Gas Fryers) Needs New # like 3291  |
|      | 826xxxx | Kit, OQS FQ-Touch Gas 3, 4 and 5 Batt. (Kit to add to existing FQ-Touch Gas Fryers) Needs New # like 3294                                   |
| 1    | 8104443 | Sensor, FilterQuick OQS Replacement Bugzilla 6472/6471 With USB stick with OCD files and firmware files. Needs New # like 8263292 (8104443) |
| 2    | 8101057 | Flexline, 5/8" OD x 13-inch   |
| 3    | 2401385 | Retainer, OQS Sensor FQ   |
| 4    | 2401386 | Brace, OQS Sensor Mount (on opposite side for 2-battery)  |
| 5    | 2401384 | Mount, OQS Sensor FQ  |
| 6    | 8104167 | Lanyard, In-Line Filter   |
| 7    | 2401086 | Wrench, Pre-Filter Cap  |

## 1.11 ATO (Auto Top-Off) Components

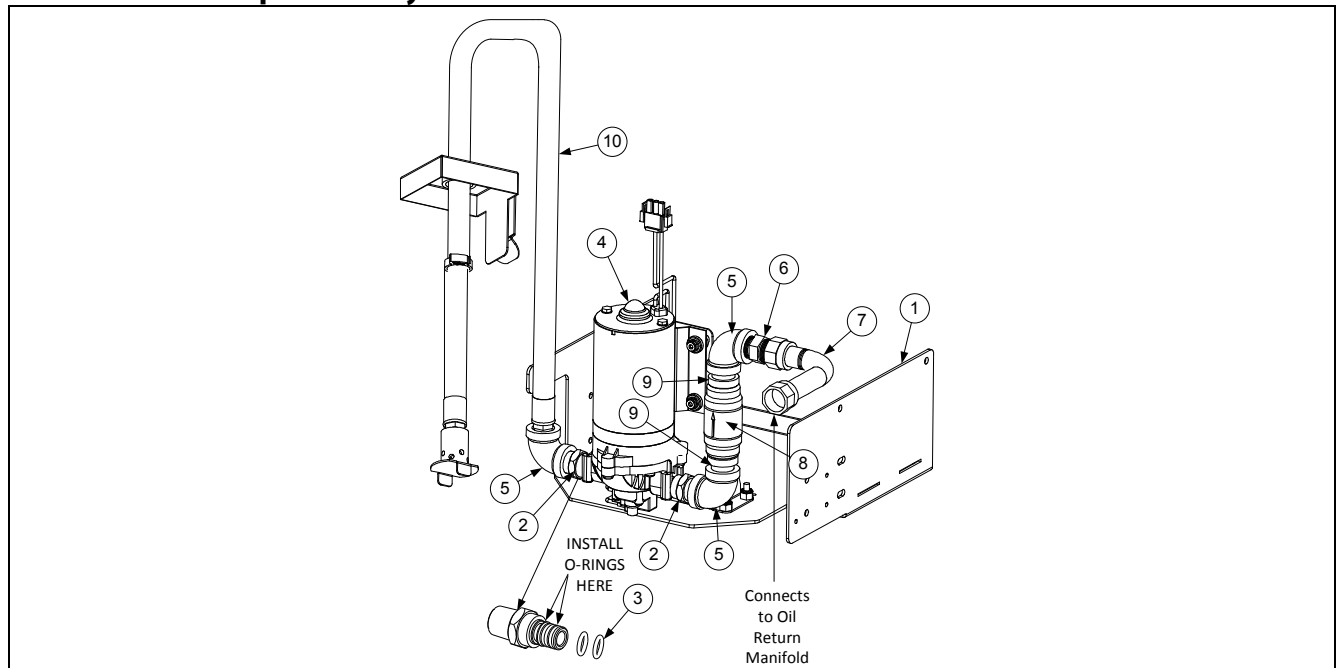
### 1.11.1 JIB Cradle, JIB Cap / Pick-Up Assembly and JIB (ATO) Reset Switch



| ITEM | PART #  | COMPONENT                      |
|------|---------|--------------------------------|
| 1    | 2209929 | Cradle, JIB                    |
| 2    | 1082005 | Cap, JIB Assembly              |
| 3    | 8237736 | Cap, JIB                       |
| 4    | 8072469 | Bushing, Heyco                 |
| 5    | 8103823 | Hose, JIB                      |
| 6    | 8237738 | Tip Assembly, JIB Suction Hose |
| √ 7  | 8074678 | Switch, Momentary JIB Reset    |

√ Recommended parts.

### 1.11.2 ATO Pump Assembly – Non-Bulk

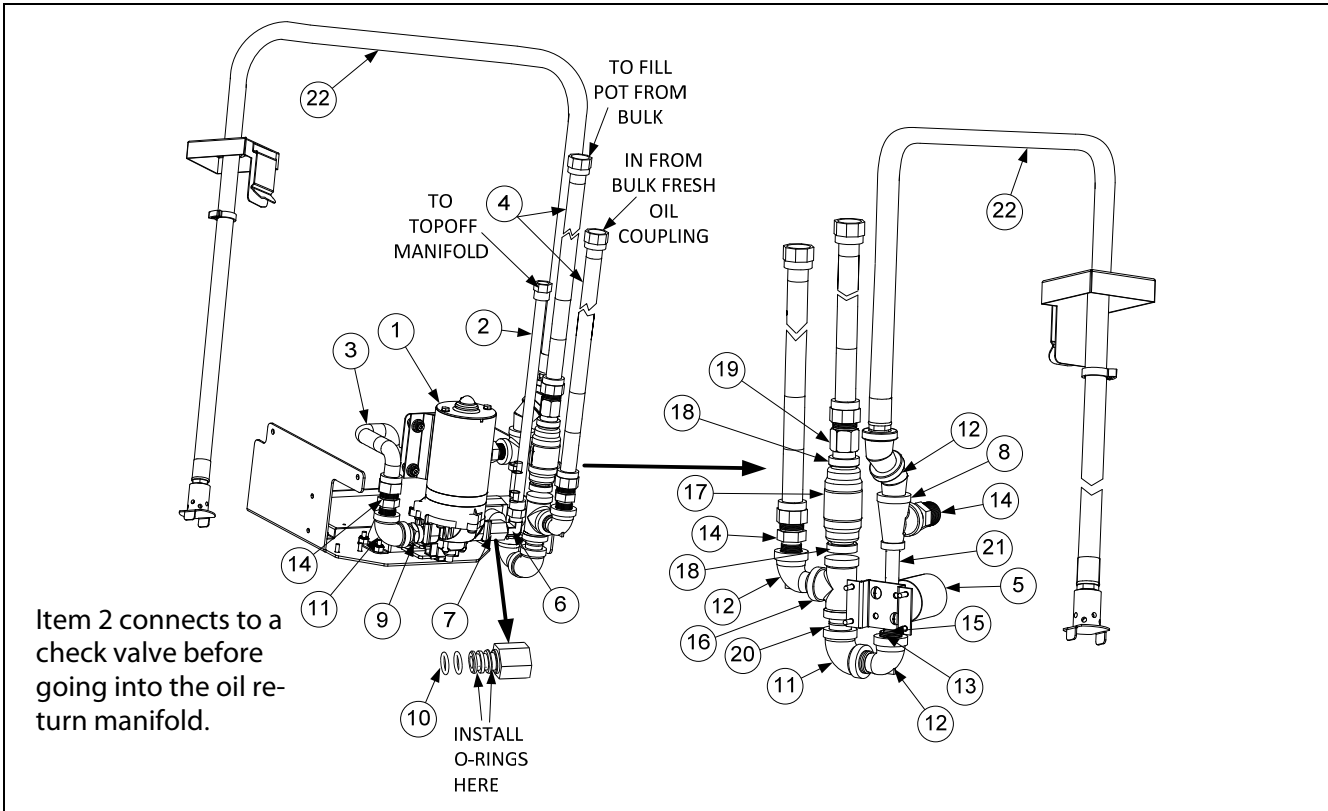


| ITEM | PART #  | COMPONENT                           |
|------|---------|-------------------------------------|
| 1    | 1085982 | Tray, Top Off Stud Assy             |
| 2    | 8103820 | Fitting, Quick Connect Shurflo Pump |
| √ 3  | 8160782 | O-Ring, Viton #111                  |
| √ 4  | 1084372 | Pump, ATO 24VDC                     |
| 5    | 8130062 | Elbow, 1/2-inch BM 90°              |
| 6    | 8101668 | Adaptor, Male 5/8" OD x 1/2"        |
| 7    | 8101680 | Flexline, 5/8" OD x 6.50-inch       |
| √ 8  | 8100667 | Check valve, 1/2 NPT 1 PSI          |
| 9    | 8103738 | Adapter, Check Valve Close NPT      |
| 10   | 1082005 | Cap, JIB Assembly                   |

√ Recommended parts.



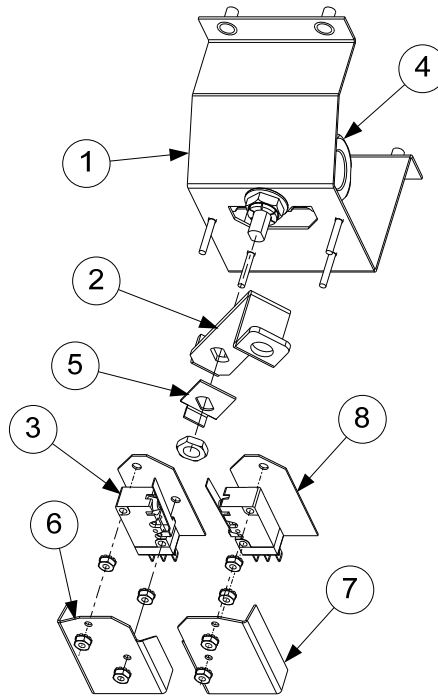
### 1.11.3 ATO Pump Assembly – Bulk



| ITEM | PART #  | COMPONENT   |
|------|---------|---|
|      | 1086060 | Pump, Assy Top Off Bulk   |
| √ 1  | 1084372 | Pump, Shurflo 24VAC   |
| 2    | 8103375 | Flexline, 1/2" OD x 17-inch (Out to oil check valve and to return manifold) |
| √ *  | 8100667 | Check valve, 1/2 NPT 1 PSI  |
| 3    | 8101055 | Flexline, 5/8" OD x 11.50-inch (Inlet to Top Off Pump)                      |
| 4    | 8101369 | Flexline, 5/8" OD x 17.50-inch  |
| *    | 8103263 | Flexline, 5/8" OD x 36-inch   |
| *    | 8103264 | Flexline, 5/8" OD x 42-inch   |
| 5    | 1066830 | Solenoid  |
| 6    | 8130940 | Elbow, 1/4" NPT x 3/8" Flare  |
| 7    | 1083403 | Fitting, Shurflo Connect  |
| 8    | 8130530 | Tee, Reducing 1/2" x 1/4" x 1/2"  |
| 9    | 1082054 | Fitting Assy, Shurflo Connect   |
| √ 10 | 8160782 | O-Ring, Viton #111  |
| 11   | 8130062 | Elbow, 1/2" BM 90°  |
| 12   | 8130165 | Elbow, Street 1/2" x 1/2" NPT 90° BM  |
| 13   | 8130304 | Bushing, BM Flush   |
| 14   | 8101668 | Adaptor, Male 5/8" OD x 1/2"  |
| 15   | 8130838 | Nipple, 1/4" NPT BM Close   |
| 16   | 8130003 | Tee, 1/2" x 1/2" x 1/2" BM  |
| √ 17 | 8103583 | Check Valve 1/2" NPT 4 PSI  |
| 18   | 8103738 | Adapter, Check Valve Close NPT  |
| 19   | 8101669 | Adapter, Female 7/8" OD x 1/2"  |
| 20   | 8130022 | Nipple, 1/2" x Close NPT BM   |
| 21   | 8130537 | Nipple, 1/4" x 2.00" NPT  |
| 22   | 1082005 | Cap, JIB Assembly   |
| *    | 1086323 | Heater, Low Oil Volume ATO Pump Inlet 100V 40W 56"                          |

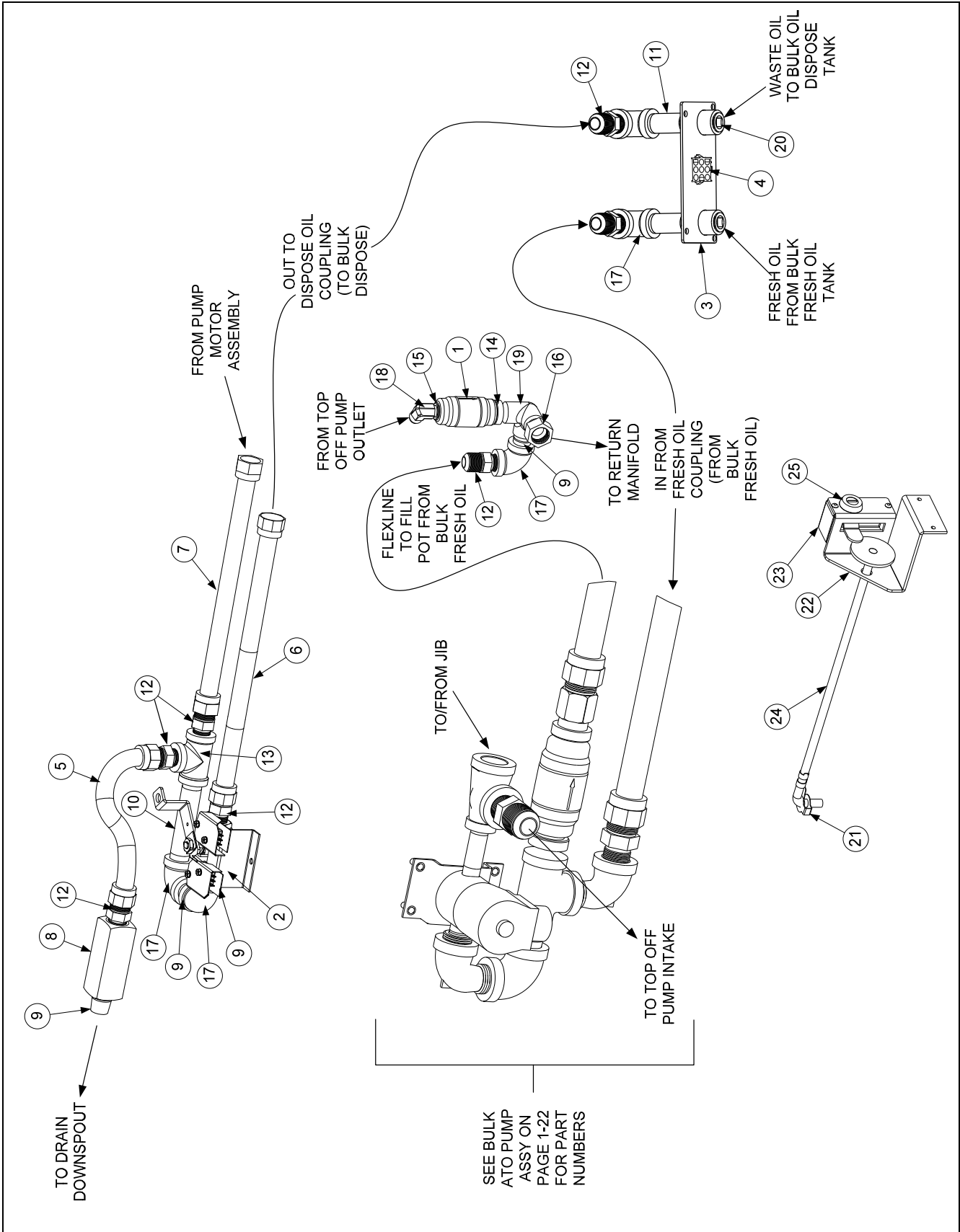
\* Not illustrated. √ Recommended parts.

**1.12 Bulk System Components**  
**1.12.1 Bulk Dispose Waste Valve**



| ITEM | PART #  | COMPONENT                           |
|------|---------|-------------------------------------|
|      | 1085923 | Valve, Waste Dispose Low Oil Volume |
| 1    | 1085922 | Stud Assy, Waste Valve              |
| 2    | 2205899 | Handle, Bulk Waste Valve            |
| 3    | 8074936 | Microswitch, Gold Sealed            |
| 4    | 8100278 | Valve, 1/2" Ball                    |
| 5    | 9002935 | Retainer, Nut Return Valve          |
| 6    | 9012348 | Cover, DV Safety Switch             |
| 7    | 9022348 | Cover, DV Safety Switch             |
| 8    | 8160220 | Insulation, RF Switch               |

### 1.12.2 Bulk Manifold and Accessories



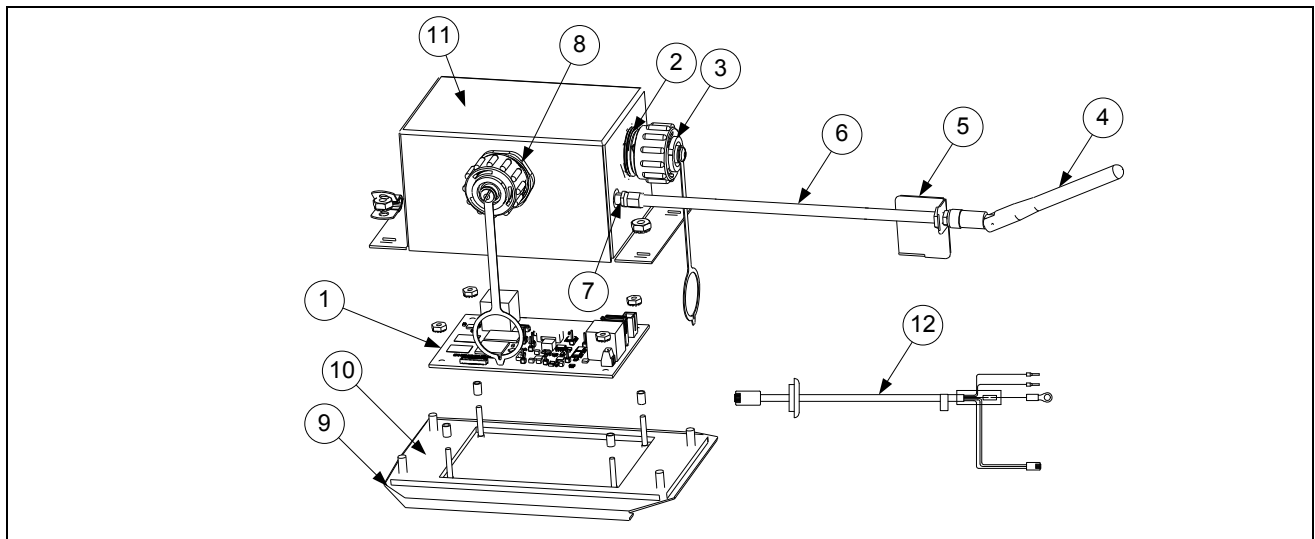
### 1.12.2 Bulk Manifold and Accessories cont.

| ITEM | PART #    | COMPONENT  |
|------|-----------|--|
| √ 1  | 8100667   | Valve, Check 1/2" NPT 1 PSI Bulk Manifold                            |
| 2    | 1085923   | Valve, Low Oil Volume Bulk Waste Assembly (see page 1-24 for parts)  |
| 3    | 8239299   | Bracket, W/A, Touch Bulk Connections                                 |
| 4    | 8076105   | Harness, Dispose/Pan Switch, Bulk                                    |
| 5    | 8101067   | Flexline, 5/8" OD x 8.50-inches long                                 |
| 6    | 8101057   | Flexline, 5/8" OD x 13-inches long                                   |
| 7    | 8101055   | Flexline, 5/8" OD x 11.50-inches long                                |
| √ 8  | 8103531   | Valve, 20 PSI Check Bulk   |
| 9    | 8130022   | Nipple, 1/2" x Close NPT BM  |
| 10   | 8130251   | Nipple, 1/2" x 4.50-inches NPT BM (used on 3, 4 and 5 battery units) |
| 11   | 8130265   | Nipple, 1/2-inch x 2.50-inches NPT BM                                |
| 12   | 8101668   | Adaptor, Male 5/8" OD x 1/2"   |
| 13   | 8130003   | Tee, 1/2" x 1/2" x 1/2" BM   |
| 14   | 8103738   | Adaptor, Check Valve Close Nipple                                    |
| 15   | 8130304   | Bushing, 1/2" x 1/4"   |
| 16   | 8103160   | Adaptor, 1/2" NPT x 15/16"   |
| 17   | 8130062   | Elbow, 1/2" BM 90°   |
| 18   | 8130940   | Elbow, 1/4" NPT x 3/8 Flare  |
| 19   | 8130331   | Elbow, W/Side Outlet 1/2" NPT  |
| 20   | 8130463   | Plug, Pipe 1/2" NPT  |
|      | 1080686SP | Handle and Lock Assy, Gas Low Oil Volume Bulk                        |
| 21   | 8090657   | Clip, Clevis Right Rod End   |
| 22   | 2205656   | Brace, Bulk Handle   |
| 23   | 2208664   | Cover, Bulk Handle   |
| 24   | 8237208   | Handle, Gas Low Oil Volume Bulk Waste Pull                           |
| 25   | 8103587   | Lock, Bulk Waste Handle (includes keys)                              |

√ Recommended parts.

\* Not illustrated.

### 1.13 Datalink System Components







| ITEM | PART #  | COMPONENT                   |
|------|---------|-----------------------------|
|      | 1087456 | Box Assy, FQ4000 KCCM Board |
| 1    | 8076148 | PCB, Assy FQ4000 KCCM/SUI   |
| 2    | 8075969 | Cable, USB Receptacle Mount |

### 1.13 Datalink System Components cont.

| ITEM | PART #  | COMPONENT  |
|------|---------|--|
| 3    | 8075970 | Cap, Dust  |
| 4    | 8075975 | Antenna  |
| 5    | 2601847 | Bracket, Remote Antenna  |
| 6    | 8076150 | Cable. Coax  |
| 7    | 8076225 | Cable, U. FL to RP-SMA Bulkhead  |
| 8    | 8075967 | Coupler, 8PBC to 8PBC  |
| 9    | 1087160 | Plate, Assy, Enclosure KCCM Board  |
| 10   | 8161076 | Seal, Enclosure KCCM Board   |
| 11   | 8242437 | Cover, Weldment, FQ4000 KCCM Board   |
| 12   | 8076149 | Cable, FQ4000 KCCM Communication/Power   |
| *    | 8075977 | Cable, RJ45 7.87"  |
| *    | 8075974 | Power Supply, 24VDC, 15W for KCCM SUI board (Located inside the FIB – Filter/Topoff box) |

**WELBILT®**  
*Bringing innovation to the table***WWW.WELBILT.COM**

Welbilt provides the world's top chefs, and premier chain operators or growing independents with industry leading equipment and solutions. Our cutting-edge designs and lean manufacturing tactics are powered by deep knowledge, operator insights, and culinary expertise. All of our products are backed by KitchenCare® – our aftermarket, repair, and parts service.

 CLEVELAND  
CONVOOTHERM® DELFIELD®  
FITKITCHEN™ FRYMASTER®  
GARLAND KOLPAK®  
LINCOLN MANITOWOC®  
MERCO® MERRYCHEF®  
MULTIPLEX®