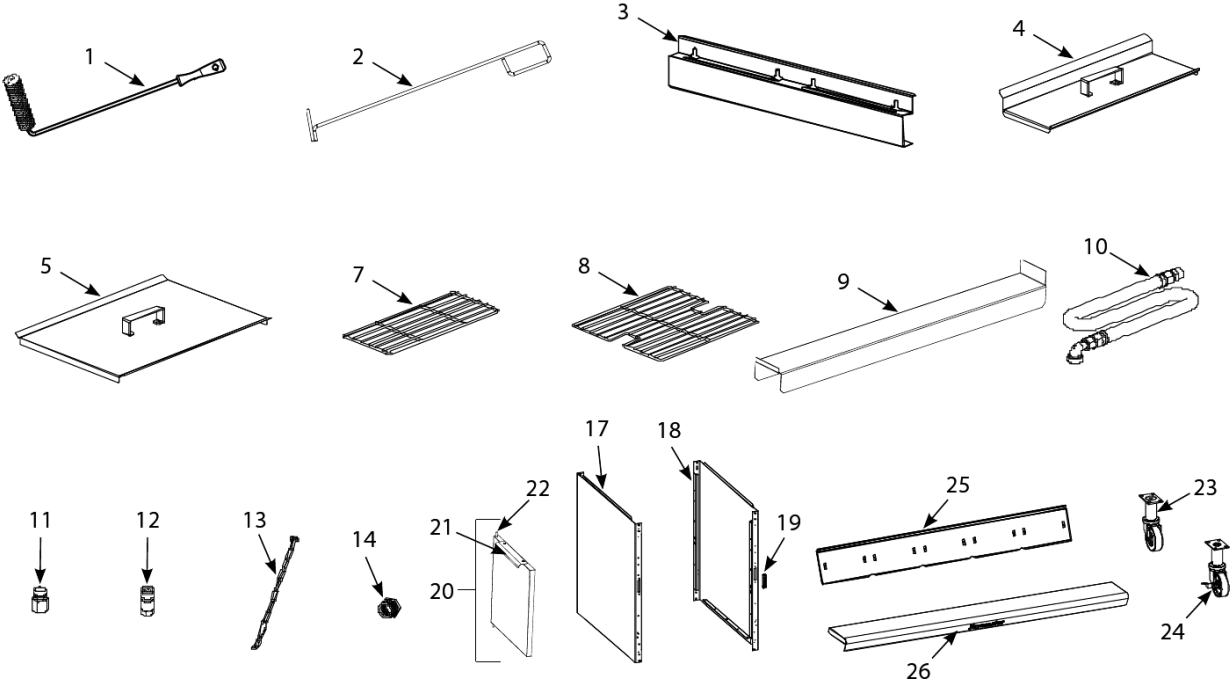


# FQE30U

## Accessories, Doors, Sides, Flue Caps, Top Caps and Casters



# FQE30U

## Accessories, Doors, Sides, Flue Caps, Top Caps and Casters

#	PART #	DESCRIPTION	QTY	Note
1	8030429	Brush, Frypot	1	
2	8030388	Fryers Friend	1	
3	2307495	Hanger, Basket Two Station	1	[1]
3a	2307497	Hanger, Basket Three Station	1	
4	1068931	Cover, Dual-Vat Frypot	1	
5	1068930	Cover, Full-Vat Frypot	1	
6	8260993SP	Handle Kit, Frypot Cover	1	[2]
7	8030372	Rack, Dual-Vat Basket Support	1	
7a	8030375	Rack, Full-Vat Basket Support	1	
8	8030136	Basket Support Screen, Full Vat	1	[3]
9	2302975	Connecting Strip, Frypot	1	
10	8100478	Gas Line, 1-Inch Dormont Flexible	1	
10a	8061698SP	Gas Line, 1-Inch Dormont Flexible, 36-Inch	1	
10b	8100088	Gas Line, 1-Inch Dormont Flexible, 36-Inch	1	
10c	8061699	Gas Line, 1-Inch Dormont Flexible, 48-Inch	1	
10d	8100085	Gas Line, 1-Inch Dormont Flexible, 48-Inch	1	
11	8100074	Quick-Disconnect Fitting, 1-Inch Male	1	
12	8100073	Coupling, Gas Line Female Quick Disconnect 1-inch	1	
13	8103745	Quick Disconnect - 0.75"	1	[4]
14	8260900	Kit, Chain Restraint	1	
15	8130032	Bushing, Flexible Gas Line	1	
16	8261157	Kit, Fuse and Fuse Puller	1	[5]
17	2317908	Side, Standard Cabinet Left SS	1	
18	2327908	Side, Standard Cabinet Right SS	1	
19	8101105	Door Magnet - Vertical	1	
19a	8102346	Door Magnet - Horizontal	1	
20	1064397	Door - Left/Right	1	
20a	1080915	Burner Box Bottom	1	
21	2304960	Handle, Eurolook Door	1	
22	1064067SP	Door Pin Assembly	1	
22a	8261343	Spring - Door Pin Hinge	1	
22b	8090970	Retaining Ring	1	
22c	2307192	Hinge, Door Lower	1	
23	8100327	Caster 4" without Brake	1	
24	8100944	Caster 3" with Brake	1	
25	8237724	Flue Cap-Stainless Steel, Two Station Fryer	1	
25a	8237727	Flue Cap-Stainless Steel, Three Station Fryer	1	
25b	8238924	Flue Cap-Stainless Steel, Four Station Fryer	1	
25c	8237752	Flue Cap-Stainless Steel, Five Station Fryer	1	
26	8241913	Top Cap (Cap for 5-station fryer shown), Two Station Fryer	1	
26a	8236635	Top Cap (Cap for 5-station fryer shown),Three Station Fryer	1	
26b	8236636	Top Cap (Cap for 5-station fryer shown),Four Station Fryer	1	
26c	1083030	Top Cap (Cap for 5-station fryer shown),Five Station Fryer	1	

### PART NOTES:

- [1] - use two for a Four Station fryer
- [2] - includes handle and screws

---

## Accessories, Doors, Sides, Flue Caps, Top Caps and Casters

# FQE30U

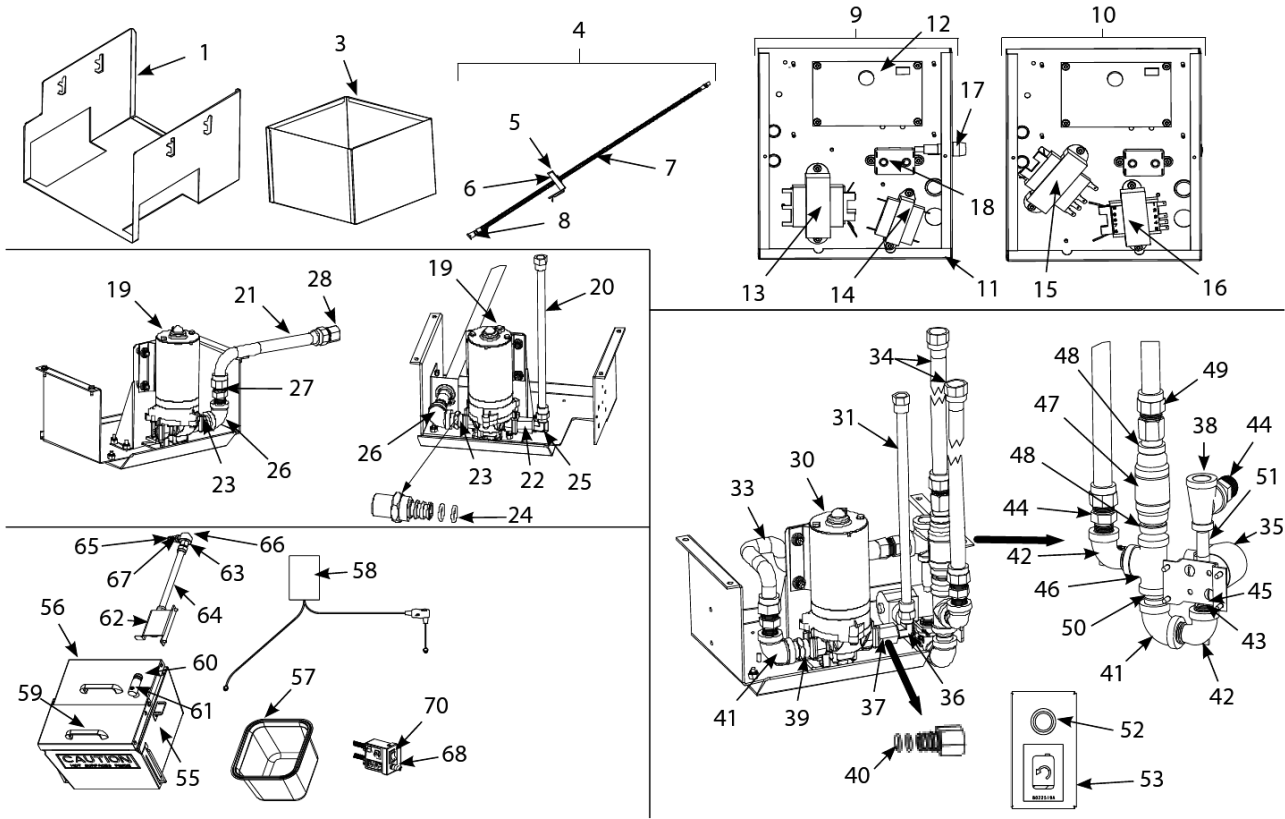
## Accessories, Doors, Sides, Flue Caps, Top Caps and Casters

#	PART #	DESCRIPTION	QTY	Note
[3]	-	screen w/handle used in place of Item 9		
[4]	-	includes male and female connectors		
[5]	-	2 Fuses		



# FQE30U

## ATO (Auto Top-Off) Components



# FQE30U

## ATO (Auto Top-Off) Components

#	PART #	DESCRIPTION	QTY	Note
1	2600197	Cradle, JIB Gas	1	
2	8090402	Thumbscrew - 0.25"-20 x 0.5"	1	
3	8242298	Box, JIB	1	
4	1082005SP	Cap, JIB Assembly	1	
4a	1082047	Cap, JIB Assembly, Intl BIB	1	
5	1082001SP	Cap, JIB	1	
5a	1082002SP	Cap, JIB Assembly - BIB Europe	1	
6	8160870	Clamp	1	
7	8103823	Hose, JIB	1	
8	8237738	Tip Assembly, JIB Suction Hose	1	
9	1085719	Box, Topoff Assembly FilterQuick 120V	1	
10	1085764	Box, Topoff Assembly FilterQuick 208-240V	1	
11	1085718	Box, Auto Top Off Board	1	
11a	2205679	Cover, Top Off Board Box	1	
12	1085717	PCB Board, Automatic Top Off	1	[1]
13	8072181	Transformer, 100-120V/24V 62VA	1	[1]
14	8070855	Transformer - 120V/50-60 Hz - 12V 20VA	1	[1]
15	8072180	Transformer - 208-240V/24V 50A	1	[1]
16	8072191	Transformer - 208-240V -12V 30VA	1	[1]
17	8071321	Holder, Fuse	1	
17a	8071597	Fuse - 3amp Slo-Blow	1	[1]
18	8070012	Filter Relay - 18A 24VAC	1	[2]
19	1080639	Pump, Shurflo 24VAC	1	[1]
19a	1085673	Pump, Shurflo 24VAC	1	[3]
20	8103263	Flexline - 0.5" OD x 36" L	1	[4]
20a	8103375	Flexline - 0.5" OD x 17" L	1	[5]
21	8101369	Flexline - Oil Return - 17.5" L	1	
21a	8101069	Flexline - 0.625" OD x 29.5" L	1	[6]
22	1083403SP	Fitting, Shurflo Pump with female end	1	[7]
23	1082054SP	Fitting, Shurflo Pump with male end	1	[7]
24	8160782	O-Ring, Viton #111	1	
25	8130940	Elbow, 0.25" NPT x 0.375" Flare	1	
26	8130062	Elbow - 0.5" BM x 90°	1	
27	8101668	Male Adaptor - 0.625" OD x 0.5"	1	
28	8101669	Female Adaptor - 0.875" OD x 0.5"	1	
29	1085790	Pump, Assy FQ230 Bulk ATO	1	
29a	1085791	Pump, Assy FQ330 Bulk Oil ATO	1	
30	1080639	Pump, Shurflo 24VAC	1	[1]
31	8103263	Flexline - 0.5" OD x 36" L	1	[8]
31a	8103375	Flexline - 0.5" OD x 17" L	1	[8]
32	8100667	Valve, Check 0.5" 1 PSI	1	
33	8101055	Flexline - 0.625" OD x 11.5" L	1	[9]
34	8101369	Flexline - Oil Return - 17.5" L	1	
35	1066830SP	Solenoid Assembly	1	
36	8130940	Elbow, 0.25" NPT x 0.375" Flare	1	
37	1083403SP	Fitting, Shurflo Pump with female end	1	[7]

ATO (Auto Top-Off) Components

# FQE30U

## ATO (Auto Top-Off) Components

#	PART #	DESCRIPTION	QTY	Note
38	8130530	Tee, Reducing 0.5-inch x 0.25-inch x 0.5-inch	1	[10]
39	1082054SP	Fitting, Shurflo Pump with male end	1	[7]
40	8160782	O-Ring, Viton #111	1	
41	8130062	Elbow - 0.5" BM x 90°	1	
42	8130165	Elbow - 0.5" x 90° NPT Street	1	
43	8130304	Bushing, 0.5-inch NPT to 0.25-inch NPT Flush Reducing	1	
44	8101668	Male Adaptor - 0.625" OD x 0.5"	1	
45	8130838	Nipple - 0.25" NPT	1	
46	8130003-FRY	Tee - 0.5" NPT	1	
47	8103583	Check Valve - 4 psi	1	
48	8103738	Adaptor, Check Valve Close NPL	1	
49	8101669	Female Adaptor - 0.875" OD x 0.5"	1	
50	8130022	Nipple, 0.5" Close NPT BM	1	
51	8130537	Nipple - 0.25" x 2"	1	
52	1069206	Assembly, JIB Reset Button Bracket	1	
53	8074678	Switch, Momentary	1	
54	1084497SP	Assy, Heated Shortening 120V	1	
54a	1084493	Assy, Heated Shortening 240V	1	
54b	1085585	Assy, Heated Shortening 100V	1	
55	1084496	Box Assy, Heated Shortening 120V	1	
55a	1084492	Box Assy, Heated Shortening 240V	1	
55b	1085584	Box Assy, Heated Shortening 100V	1	
56	1083774	Assembly, Solid Shortening Lid	1	
57	8103957	Pan, Heated Shortening	1	
58	8075321	Strips, Hot Box Heater with controller 120V	1	
58a	8075268	Strips, Hot Box Heater with controller	1	
58b	8075732	Strips, Hot Box Heater with controller 100V	1	
59	8100180	Handle	1	
60	8261392	O-Ring	5	[1]
61	8130568	Plug, 0.125" SS NPT, Sq-Head	1	
62	8238319	Bracket W/A, Shortening Suction 3 battery	1	
63	8101669	Female Adaptor - 0.875" OD x 0.5"	1	
64	8101055	Flexline - 0.625" OD x 11.5" L	1	
65	8160782	O-Ring, Viton #111	1	
66	8130908	Adapter, 0.5" NPT 90°	1	
67	1082054SP	Fitting, Shurflo Pump with male end	1	[7]
68	8071321	Holder, Fuse	1	
69	8071555	Fuse 5 Amp	1	[1]
69a	8072799	Fuse 10 Amp 120V	1	[1]
70	8074036	Switch	1	
71	8071105	Heater Strip Assembly, 100-120V 25W 18"	1	
71a	8071420	Heater Tape 120V 25w 36"	1	
71b	8071472	Heater Tape 120V 40w 56"	1	
71c	8071098	Heater Strip Assembly, 240V, 25W 18"	1	
71d	8071419	Heater Strip Assembly, 240V, 45W 36"	1	
71e	8071473	Heater Strip Assembly, 240V, 70W 56"	1	

ATO (Auto Top-Off) Components

# FQE30U

## ATO (Auto Top-Off) Components

#	PART #	DESCRIPTION	QTY	Note
71f	8071915	Heater Strip Assembly, 100V, 25W 18"	1	
71g	8071917	Heater Strip Assembly, 100V, 40W 56"	1	

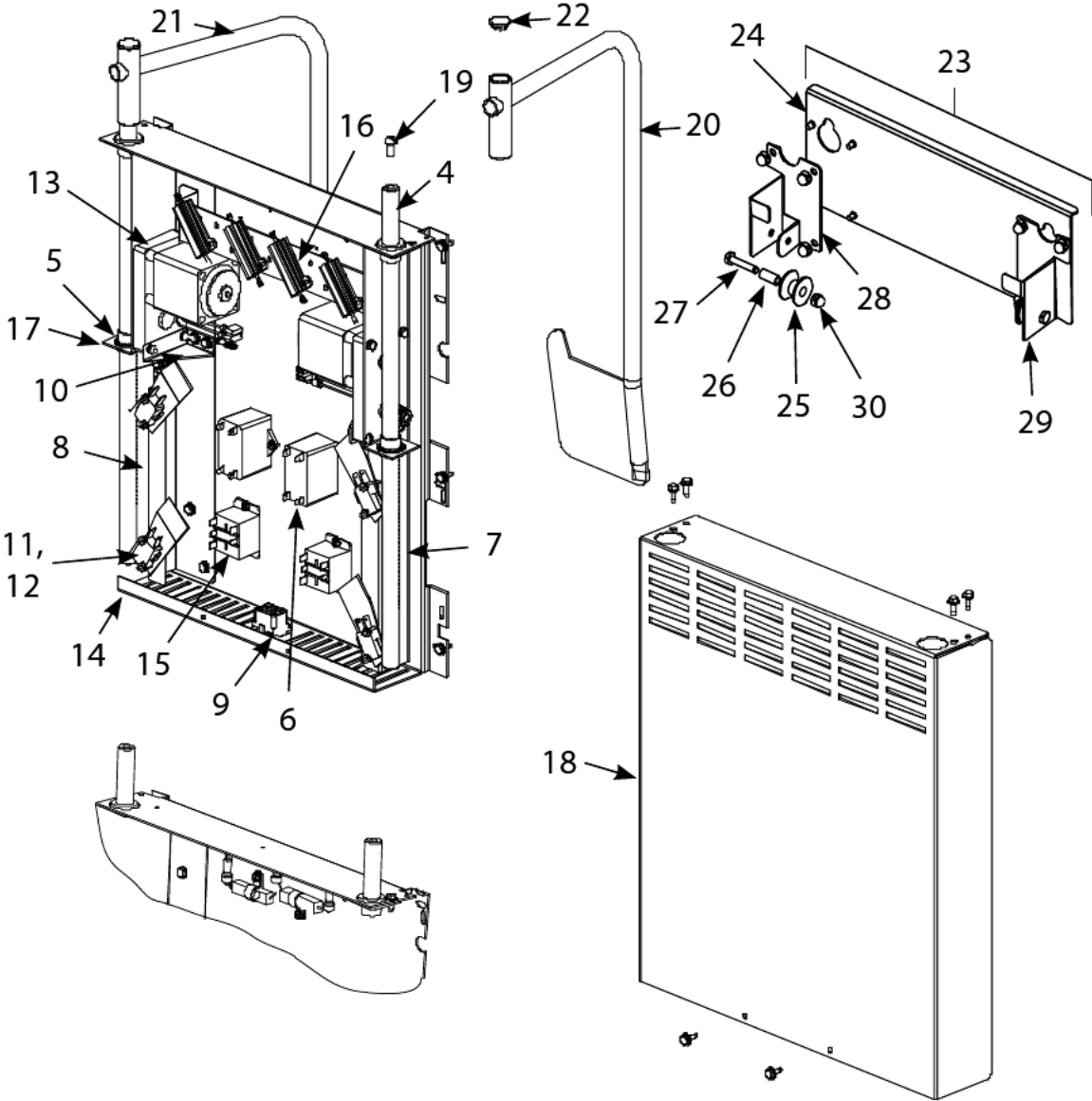
Top off boxes for vats 4 and 5 have either item 13 or item 15, both have item 12.

### PART NOTES:

- [1] - Recommended Stock Part
- [2] - Recommended Stock Part, Top of pump
- [3] - CE
- [4] - Out to top of manifold
- [5] - 2-battery, Out to top of manifold
- [6] - 2-battery
- [7] - includes O-rings
- [8] - Out to oil check valve and to return manifold
- [9] - Inlet to Top Of Pump
- [10] - JIB hose connects here

# FQE30U

## Basket Lift Assembly and Associated Parts



Basket Lift Assembly and Associated Parts



# FQE30U

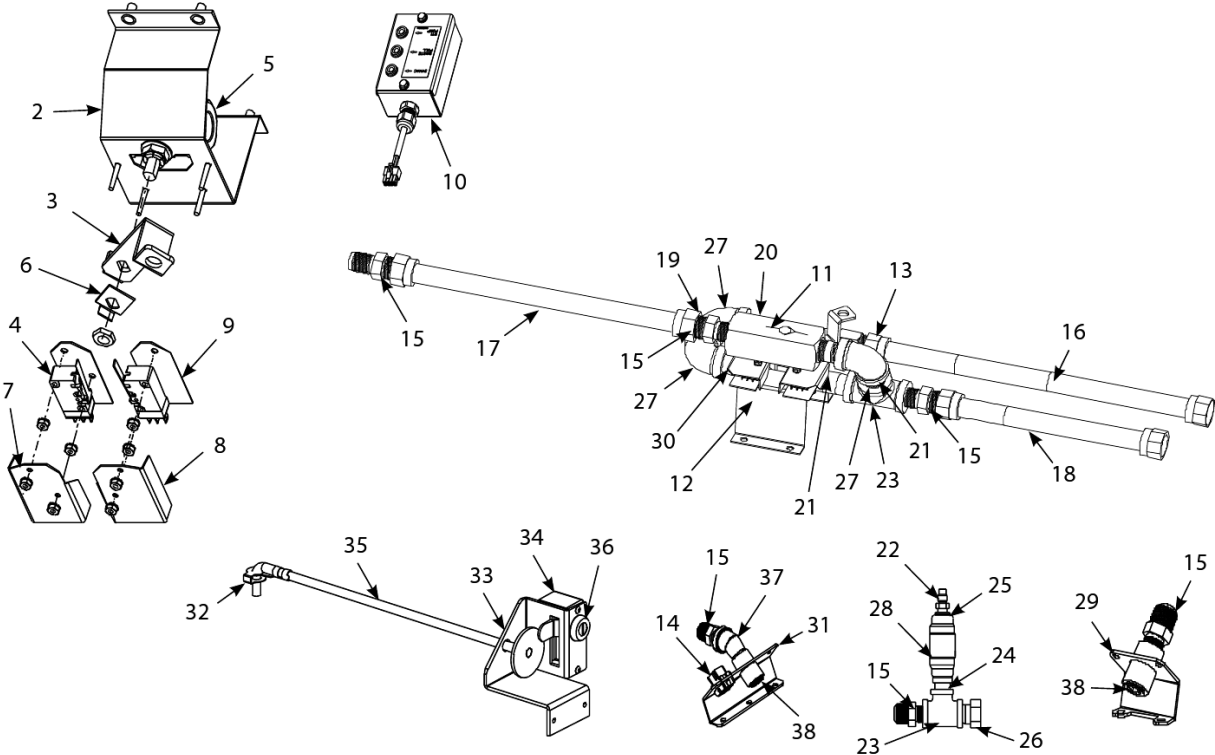
## Basket Lift Assembly and Associated Parts

#	PART #	DESCRIPTION	QTY	Note
1	1061807SP	Basket Lift Assemblies, 100-120V w/o Relay	1	
2	1061805SP	Basket Lift Assy, 200-220VAC w/Relay	1	
3	1061810SP	Basket Lift Assemblies, 202-250V w/o Relay	1	
4	8101012	Rod, Basket Lift	1	
5	8130035	Bushing , Oiltite .640 I.D.	1	
6	8072513	Capacitor - 12.5 MFD/330VAC	1	
7	9018499	Chassis, Left Basket Lift	1	
8	9028499	Chassis, Right Basket Lift	1	
9	8070159	12-Pin Female	1	
10	9005529	Gusset, Basket Lift Motor	1	
11	8120442	Insulation, Microswitch	1	
12	8072572	Microswitch	1	
13	8065964SP	Motor Assembly - 208-240V	1	
14	2002942	Mount, Modular Basket Lift	1	
15	8071683	Relay, 12VDC Secondary Blower Fan to cool frypot	1	
16	8068530SP	Resistor Assy, 100-120V Modular Basket Lift	1	
16a	1062770SP	Resistor Assy, 208-220VAC Modular Basket Lift	1	
16b	1062771	Resistor Assembly, CE, 208-250V Modular Basket Lift	1	
17	8090082	Ring, Bushing Retainer	1	
18	9104776	Cover, Modular Basket Lift Rear S/S	1	
18a	9004776	Cover, Modular Basket Lift Rear S/S	1	
19	8090127	Screw, 0.25-20 X 0.5-inch Slotted Round Head	1	
20	8238015	Arm, Left Basket Lift	1	
21	8238016	Arm, Right Basket Lift	1	
22	8100179	Button, Plug	1	
23	1082743SP	Roller Assy, Basket Lift	1	
24	1082860	Mount, Basket Lift Roller	1	
25	8100194	Roller, Basket Lift	1	
26	8100374	Spacer, Basket Lift Roller	1	
27	8090508	Bolt - 0.25-20 x 1.25"	1	
28	8237980	Guide, Basket lift Left	1	
29	8238023	Guide, Basket lift Right	1	
30	8090990	Nut, 0.25-20 Cap	1	
31	8241477	Tray, Drip Right	1	
31a	8241476	Tray, Drip Left	1	
32	1083454SP	Harness, Gas OCF BL Interface	1	
33	8073695	Basket Lift Cable	1	
34	1061804SP	Wire Bundle - 208-250V Modular Basket Lift	1	
34a	1061822SP	Wire Bundle - 100-120V Modular Basket Lift	1	

Basket Lift Assembly and Associated Parts

# FQE30U

## Bulk Oil System Components



# FQE30U

## Bulk Oil System Components

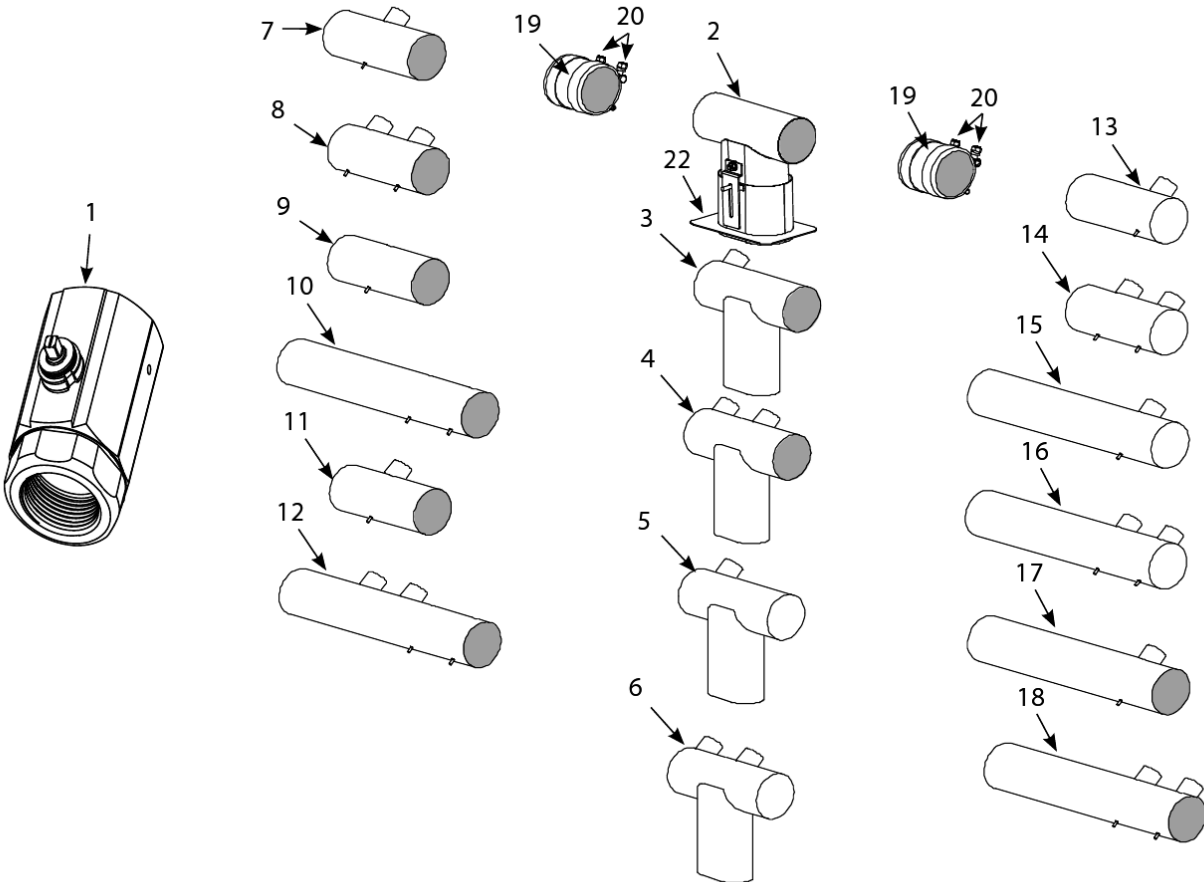
#	PART #	DESCRIPTION	QTY	Note
1	1086009	Valve, Bulk Waste Assembly	1	
2	1086008	Bracket, FQ Bulk Waste Valve	1	
3	2205899	Handle, Bulk Waste Valve	1	
4	8074936	Switch, Micro Gold Plated	1	
5	8100278	Valve, 0.5" Ball	1	
6	9002935	Retainer, Nut Oil Return Valve	1	
7	9012348	Cover, Dual-Vat Left Drain Safety Switch	1	
8	9022348	Cover, DV Safety Switch	1	
9	8160220	Insulation, Microswitch	1	
10	1080716SP	Box, Bulk Test	1	
11	8103531	Valve, Check 20 PSI	1	
12	1086009	Valve, Bulk Waste Assembly	1	
13	8101669	Female Adaptor - 0.875" OD x 0.5"	1	
14	8075789	Harness, MIB -Bulk connector	1	
15	8101668	Male Adaptor - 0.625" OD x 0.5"	1	
16	8101057	Flexline - Oil Return - 13" L	1	
17	8101055	Flexline - 0.625" OD x 11.5" L	1	
18	8101067	Flexline - Oil Return - 0.625" OD x 8.5" L	1	
19	8130022	Nipple, 0.5" Close NPT BM	1	
20	8130251	Nipple, 0.5" x 4.5" NPT BM Pipe	1	[1]
21	8130087	Nipple, 0.5-inch NPT x 1.5-inch (3.8 cm)	1	
22	8103270	Fitting, 0.375" Flare x 0.25 " NPT	1	
23	8130003-FRY	Tee - 0.5" NPT	1	
24	8103738	Adaptor, Check Valve Close NPL	1	
25	8130304	Bushing, 0.5-inch NPT to 0.25-inch NPT Flush Reducing	1	
26	8103160	Adaptor, 0.5 " NPT x 0.9375"	1	
27	8130062	Elbow - 0.5" BM x 90°	1	
28	8100667	Valve, Check 0.5" 1 PSI	1	
29	8237838	Bracket W/A, Gas Bulk Fresh Oil	1	
30	8130298	Nipple, 0.5" x 2.00" NPT BM Pipe	1	
31	8238827	Bracket W/A, FQ Gas Bulk Dispose	1	
31a	1080686SP	Handle and Lock Assembly -Gas	1	
32	8090657	Clip, Clevis Right Rod End	1	
33	2205656	Brace, Handle	1	
34	2205657	Cover, Handle	1	
35	8237208	Handle, Gas Bulk Waste Pull	1	
36	8103587	Lock and Key, Waste Handle	1	[2]
37	8130342	Elbow, 0.5-inch 45° Street	1	
38	8130463-FRY	Plug - 0.5" NPT	1	

### PART NOTES:

- [1] - not shown in illustration – connects between item 27 and item 13
- [2] - includes keys

# FQE30U

## Drain Valves and Associated Parts



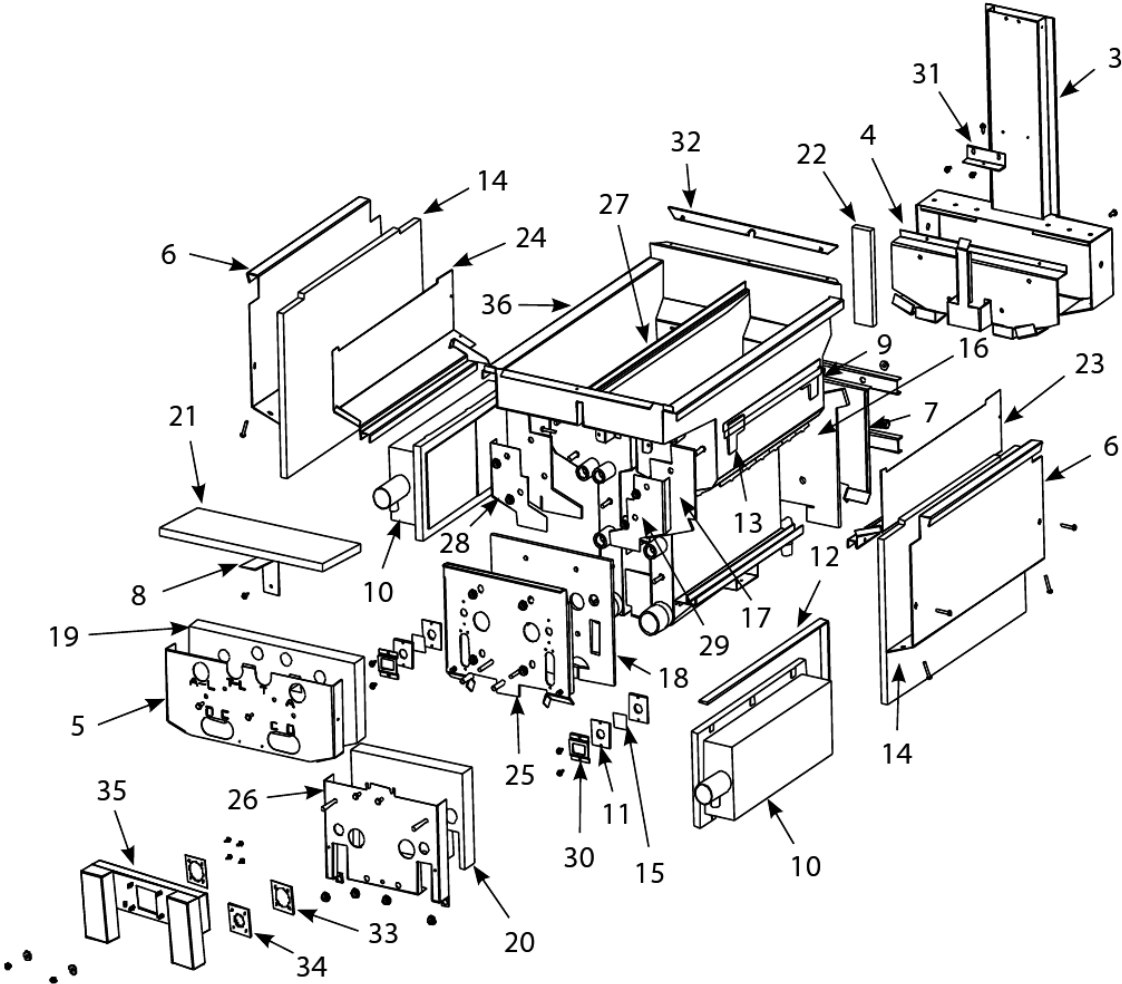
# FQE30U

## Drain Valves and Associated Parts

#	PART #	DESCRIPTION	QTY	Note
1	8104353	Valve, 1.25 Drain Rotary Actuator	1	
2	1085906	Drain Tube, Dump Left Closed/Right End Open	1	
2a	1085915	Drain Tube, Dump Left Closed/Right End Open (Bulk)	1	
3	1085904	Drain Tube, Dump Full-Vat Left Closed/Right End Open	1	
3a	1085911	Drain Tube, Dump Full-Vat Left Closed/Right End Open (Bulk)	1	
4	1085917	Drain Tube, Dump Dual-Vat Left Closed/Right End Open	1	
4a	1085916	Drain Tube, Dump Dual-Vat Left Closed/Right End Open (Bulk)	1	
5	1085905	Drain Tube, Dump Full-Vat Left Closed/Right End Closed	1	
5a	1085914	Drain Tube, Dump Full-Vat Left Closed/Right End Closed (Bulk)	1	
6	1085919	Drain Tube, Dump Dual-Vat Left Closed/Right End Closed	1	
6a	1085918	Drain Tube, Dump Dual-Vat Left Closed/Right End Closed (Bulk)	1	
7	8237322	Drain Tube, Full-Vat Left and Right Open	1	
8	8237324	Drain Tube, Dual-Vat Left and Right Open	1	
9	8122336	Drain Tube - 3.0" x 8.0" L	1	
10	8103551	Drain Tube, Long, Open Both Ends	1	
11	8238812	Drain Tube, Full-Vat Left and Right Open	1	
12	8238813	Drain Tube, Dual-Vat Left and Right Open	1	
13	8237330	Drain Tube, Full-Vat Left Open/Right End Closed	1	
14	8237331	Drain Tube, Dual-Vat Left Open/Right End Closed	1	
15	8237329	Drain Tube, Full-Vat Left Open/Right End Closed	1	
16	8237326	Drain Tube, Dual-Vat Left Open/Right End Closed	1	
17	8237328	Drain Tube, Full-Vat Left and Right Open 15.31"	1	
17a	8238791	Drain Tube, Full-Vat Left and Right Open 18.95"	1	
18	8237327	Drain Tube, Dual-Vat Left and Right Open 15.31"	1	
18a	8238814	Drain Tube, Dual-Vat Left and Right Open 18.95"	1	
19	8160772	Sleeve	1	
20	8090969	Clamp 3"	1	
21	8160630	Cap, Vinyl Black	1	
22	8237480	Guard, Filter Lid Splash 2 battery	1	
23	8237915	Guard, Filter Lid Splash	1	

# FQE30U

## Dual-vat Frypots Components



# FQE30U

## Dual-vat Frypots Components

#	PART #	DESCRIPTION	QTY	Note
1	1081753SP	Frypot Assembly, Dual-Vat Natural/Propane	1	[1]
2	8262596	Insulation Kit, Complete Dual-Vat	1	
2a	8262593	Insulation Kit, Burner Dual-Vat	1	[2]
3	1080926SP	Flue Assembly, Dual-Vat	1	
4	1067960	Plate Assembly, Dual-Vat Collector	1	
5	2206530	Retainer, Dual-Vat Upper Insulation	1	
6	2207835	Retainer, Dual-Vat Outer Frypot	1	
7	8238176	Back, Dual-Vat Lower Combustion Chamber	1	
8	2202920	Brace, Foam Deck Insulation	1	
9	2202972	Brace, Dual-Vat Rear Insulation	1	
10	8103435	Burner, Universal Replacement	1	[2]
11	8120356	Insulation, Burner Sight Glass	1	
12	8160900	Insulation, Burner	1	
13	8120706	Insulation, Upper Burner Rail	1	
14	8121029	Insulation, Combustion Chamber Side	1	
15	8140048SP	Glass, Burner Sight	1	
16	8160838	Insulation, Dual-Vat Rear Lower	1	
17	8160741	Insulation, Dual-Vat LH/RH Front Seal	1	
18	8160977	Insulation, Dual-Vat Lower Inner Front	1	
19	8160743	Insulation, Dual-Vat Front Upper	1	
20	8160979	Insulation, Dual-Vat Outer Front	1	
21	8160746	Insulation, Foam Deck	1	
22	8120688	Insulation, Flue Collection	1	
23	8238196	Retainer, Dual-Vat RH Upper Burner	1	
24	8238195	Retainer, Dual-Vat LH Upper Burner	1	
25	8238578	Retainer, Dual-Vat Front Insulation	1	
26	8238576	Retainer, Dual-Vat Outer Front	1	
27	8241796	Riser W/A Dual-Vat Pot	1	
28	8242166	Dual-Vat LH Upper W/A Seal	1	
29	8242167	Dual-Vat RH Upper W/A Seal	1	
30	9001031	Retainer, Burner Sight Glass	1	
31	9300818	Bracket, Flue to Pot	1	
32	9004253	Strip, Fluecap Retainer	1	
33	9001049	Retainer, Plenum Gasket	1	
34	8160057	Gasket, Plenum	1	
34a	8160981	Gasket, Ignitor	1	
35	8238573	Plenum, Dual-Vat	1	
35a	1081534SP	Plenum, Dual-Vat (CE units)	1	
35b	1082554	Plenum, Dual-Vat(Export Non-CE units)	1	
36	8237645	Frypot, Dual-Vat 30 439	1	
37	9102474	Pot-to-Pot Gap Clip	1	

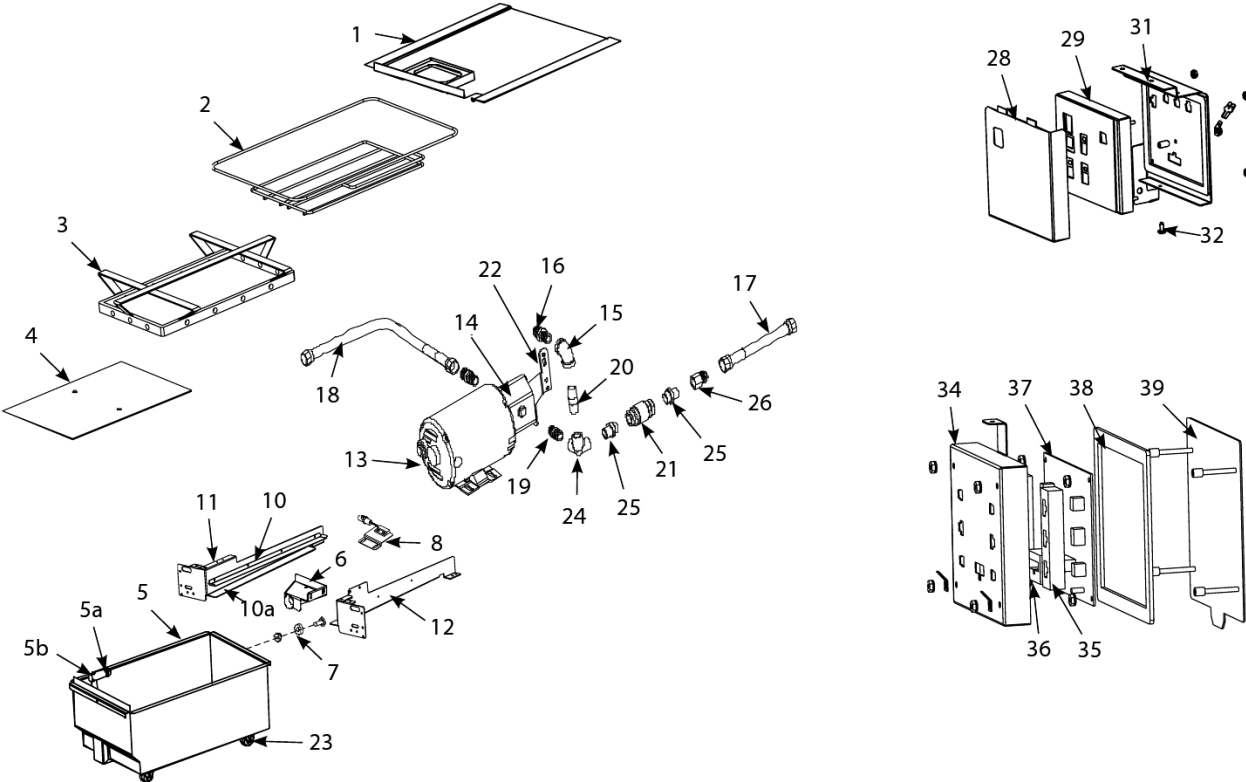
### PART NOTES:

- [1] - NAT/PRO
- [2] - Recommended Stock Part

Dual-vat Frypots Components

# FQE30U

## Filtration System Components





# FQE30U

## Filtration System Components

#	PART #	DESCRIPTION	QTY	Note
1	8238786	Lid, Filter Pan	1	
2	8238626	Crumb Tray	1	
3	8103289	Hold-Down Ring - 11.2 x 19.1	1	
4	8122025	SanaGrid Filter Screen	1	
5	1085758SP	Pan, Filter with casters	1	
5a	8261392	O-Ring	5	[1]
5b	8130568	Plug, 0.125" SS NPT, Sq-Head	1	[2]
6	8236458	Suction Tube Assembly	1	
7	8103007	Magnet - Ring	1	
8	1085626SP	Switch Assembly - Filter Pan	1	
9	1065876SP	Magnet Sensor	1	[3]
10	2318372	Rail, Upper	1	
10a	2308373	Rail, Upper Filter Pan Left/Right	1	
11	8238030	Support, Left Filter Pan	1	
12	2208368	Support, Right Filter Pan 3,4 and 5 battery	1	
12a	1082872	Support, Right Filter Pan 2 battery	1	
13	8261785	Motor and Gasket Kit - 100V/50-60 Hz	1	
13a	8261712	Motor and Gasket Kit - 115V/50-60 Hz	1	
13b	8261756	Motor and Gasket Kit - 208V/50-60 Hz	1	
13c	8261270	Motor and Gasket Kit - 220-240V/50-60 Hz	1	
13d	8261755	Motor and Gasket Kit - 250V/50-60 Hz	1	
14	8263191	Pump and Gasket Kit, 4 GPM	1	[3]
14a	8160093	Gasket - Pump/Motor	1	
14b	80711973	Pump Seal Kit - Viking	1	
14c	8091020	Cap Screw, 0.3125"-18 5.50" NC Hex	1	[4]
15	8130062	Elbow - 0.5" BM x 90°	1	
16	8101668	Male Adaptor - 0.625" OD x 0.5"	1	
17	8101067	Flexline - Oil Return - 0.625" OD x 8.5" L	1	
18	8101369	Flexline - Oil Return - 17.5" L	1	
19	8130087	Nipple, 0.5-inch NPT x 1.5-inch (3.8 cm)	1	
20	8130298	Nipple, 0.5" x 2.00" NPT BM Pipe	1	
21	8100667	Valve, Check 0.5" 1 PSI	1	
22	2206191	Brace	1	
23	8104137	Caster, 2.00-inch	1	
24	8130331	Elbow, V-Side Outlet 0.5" NPT	1	
25	8103738	Adaptor, Check Valve Close NPL	1	
26	8101669	Female Adaptor - 0.875" OD x 0.5"	1	
27	8071105	Heater Strip Assembly, 100-120V 25W 18"	1	
27a	8071098	Heater Strip Assembly, 240V, 25W 18"	1	
28	2206554	Cover, MIB	1	
29	1085723SP	Assembly, FilterQuick MIB Controller w/ Metalwork	1	[3]
29a	8074481	Assembly, FilterQuick MIB Controller w/ Metalwork (overlay)	1	
30	8160819	Seal, MIB	1	
31	2206661	Mounting Plate	1	
32	8091021	Screw, 10x 0.375 Torx Pan	1	
33	1085721	AIF Assembly FilterQuick	1	[3]

Filtration System Components

# FQE30U

## Filtration System Components

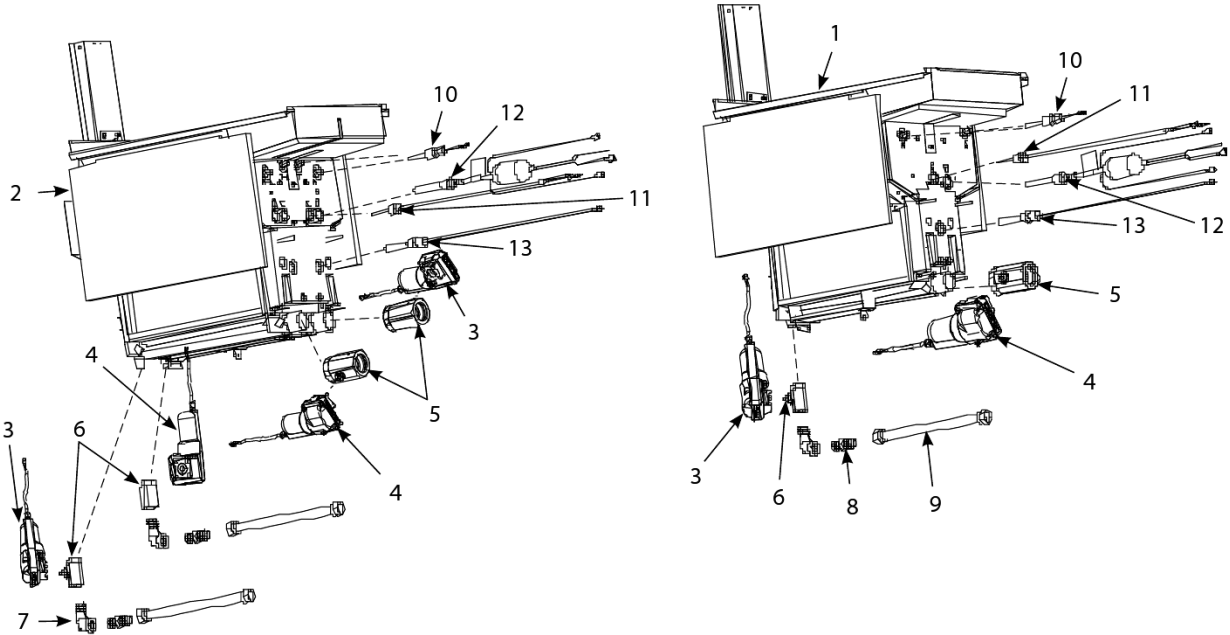
#	PART #	DESCRIPTION	QTY	Note
34	8241991	Cover, Actuator Board	1	
35	8160814	Gasket, Actuator Board	1	
36	8160815	Gasket, Controller Board	1	
37	1085720	Board, AIF Actuator FilterQuick	1	
38	8160820	Seal, Actuator Board	1	
39	1080097	Box, Actuator Stud	1	

### PART NOTES:

- [1] - used with Item 5; Recommended Stock Part
- [2] - used with Item 5; two required
- [3] - Recommended Stock Part
- [4] - Connects pump to motor.

# FQE30U

## Frypot Assemblies and Associated Parts



# FQE30U

## Frypot Assemblies and Associated Parts

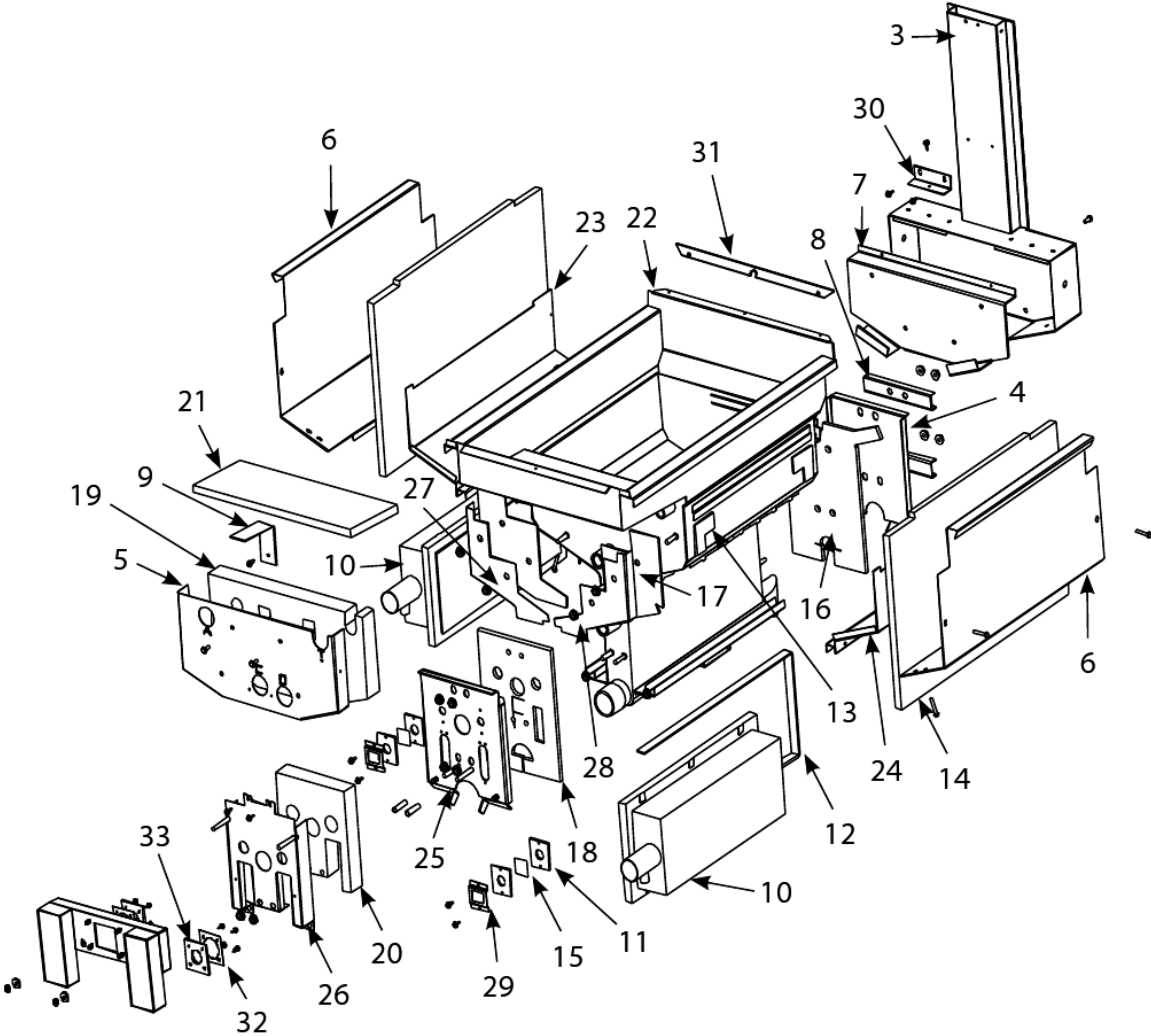
#	PART #	DESCRIPTION	QTY	Note
1	1081752SP	Frypot Assembly Full-Vat	1	
2	1081753SP	Frypot Assembly, Dual-Vat Natural/Propane	1	
3	8074961	Actuator, Rotary 24VDC (#1) Blue	1	[1]
4	8074962	Actuator, Rotary 24VDC (#2) Black	1	[1]
5	8104353	Valve, 1.25 Drain Rotary Actuator	1	[1]
6	8103754	Valve, 0.5" NPT Rotary Actuator	1	[1]
7	8130062	Elbow - 0.5" BM x 90°	1	
8	8101668	Male Adaptor - 0.625" OD x 0.5"	1	
9	8101055	Flexline - 0.625" OD x 11.5" L	1	
10	8262706	Probe Kit	1	[1]
11	8263196	Probe, Temperature Kit	1	[1]
12	8074815	Sensor Assy, Oil 120V	1	[1]
12a	8074935	Oil Sensor Assembly - 230V		
12b	8074942	Sensor Assy, Oil 240V and 250V International	1	
12c	8074947	Sensor Assy, Oil 220V and 230V International	1	
13	8261177	Thermostat, High-Limit 425°F/218°C	1	[1]

### PART NOTES:

[1] - Recommended Stock Part

# FQE30U

## Full-vat Frypots Components



# FQE30U

## Full-vat Frypots Components

#	PART #	DESCRIPTION	QTY	Note
1	1081752SP	Frypot Assembly Full-Vat	1	[1]
2	8262595	Insulation Kit, Complete Full-Vat	1	
2a	8262592	Insulation Kit, Burner Full-Vat	1	
3	1080925SP	Flue Assembly, Full-Vat	1	
4	8238175	Back, Lower Full-Vat Combustion Chamber	1	
5	2206529	Retainer, Full-Vat Upper Insulation	1	[2]
6	2207834	Retainer, Outer Frypot	1	
7	2306960	Plate, FV Collector Mounting	1	
8	2202851	Brace, FV Rear Insulation	1	
9	2202920	Brace, Foam Deck Insulation	1	
10	8103435	Burner, Universal Replacement	1	[3]
11	8120356	Insulation, Burner Sight Glass	1	
12	8160900	Insulation, Burner	1	
13	8120706	Insulation, Upper Burner Rail	1	
14	8121029	Insulation, Combustion Chamber Side	1	
15	8140048SP	Glass, Burner Sight	1	
16	8160837	Insulation, FV Rear Lower	1	
17	8160731	Insulation, FV LH/RH Front Seal	1	
18	8160976	Insulation, FV Lower Inner Front	1	
19	8160733	Insulation, FV Front Upper	1	
20	8160978	Insulation, FV Outer Front	1	
21	8160746	Insulation, Foam Deck	1	
22	8237644	Frypot, FV 30 439 SS	1	
23	8238193	Retainer, FV LH Upper Burner	1	
24	8238194	Retainer, FV RH Upper Burner	1	
25	8238571	Retainer, FV Front Combustion Insulation	1	
26	8238574	Plenum, Full-Vat	1	
26a	1081533SP	Plenum, Full-Vat	1	[4]
26b	1082553	Plenum, Full-Vat	1	[5]
27	8242164	Front Upper Seal Weldment, FV LH	1	
28	8242165	Front Upper Seal Weldment, FV RH	1	
29	9001031	Retainer, Burner Sight Glass	1	
30	9300818	Bracket, Flue to Pot	1	
31	9004253	Strip, Fluecap Retainer	1	
32	9001049	Retainer, Plenum Gasket	1	
33	8160057	Gasket, Plenum	1	
33a	8160981	Gasket, Ignitor	1	
34	9102474	Pot-to-Pot Gap Clip	1	

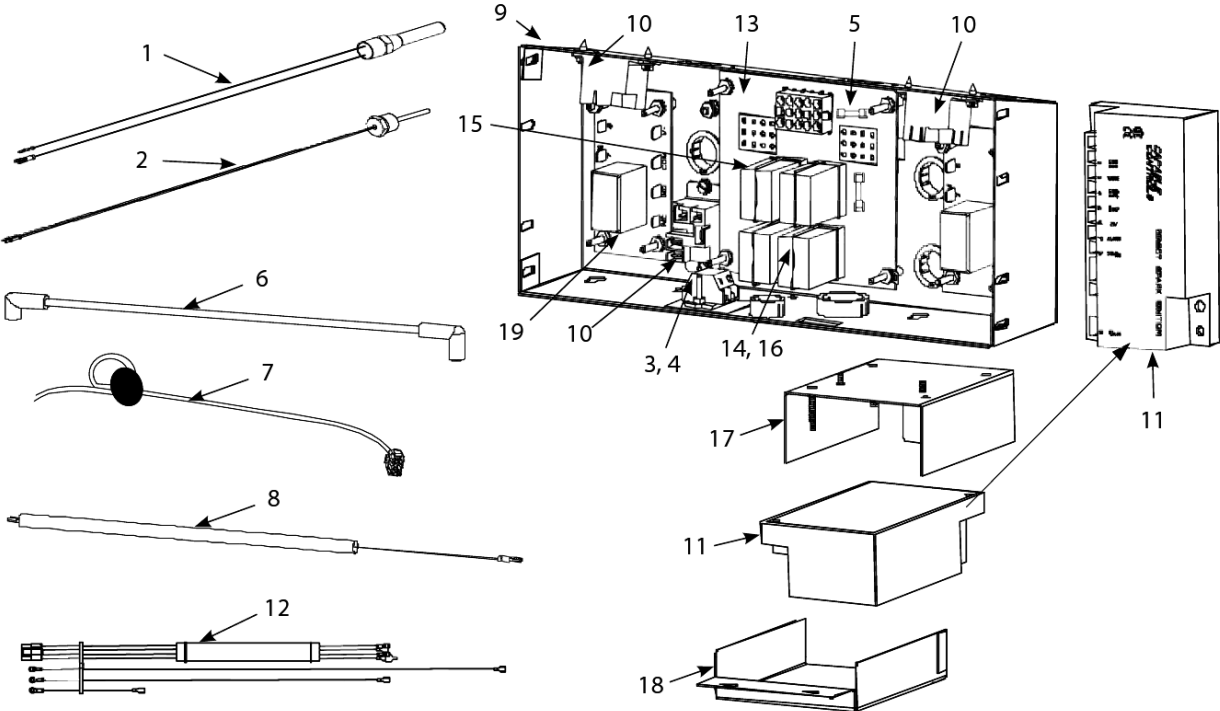
### PART NOTES:

- [1] - NAT/PRO
- [2] - modified from shown, now one piece
- [3] - Recommended Stock Part
- [4] - CE units
- [5] - Export Non-CE units

### Full-vat Frypots Components

# FQE30U

## High-Limit Thermostat, Temperature Probe and Component Boxes



High-Limit Thermostat, Temperature Probe and Component Boxes

# FQE30U

## High-Limit Thermostat, Temperature Probe and Component Boxes

#	PART #	DESCRIPTION	QTY	Note
1	8261177	Thermostat, High-Limit 425°F/218°C	1	[1]
2	8262900	Temperature Probe	1	[1]
3	8101164	Block, One-Piece Screwless Terminal	1	
4	8160217	Insulation, Terminal Block Paper	1	
5	8073843	Fuse 3A 250V Domestic	1	[1]
5a	8073293	Fuse 5A 125V	1	[1]
6	8075008	Ignition Cable - 21"	1	[2]
6a	8075009	Ignition Cable - 19" L	1	[3]
6b	8075266	Ignition Cable	1	[4]
6c	8073484	Connector, Rajah	1	[5]
7	8075165	Cable, 20-pin Controller to 15-pin Interface Board – SMT for fryer's with 3000 controller.	1	
8	8066085SP	Wire Assembly, Ignitor	1	
9	2206102	Box, One-Piece Component	1	
10	8071683	Relay, 12VDC Secondary Blower Fan to cool frypot	1	[1]
11	8075691	Ignition Module - Single Spark	1	[6]
11a	8075664	Ignition Module - Single Spark - Australia		
12	1086057	Wire Assembly, Full Vat Right	1	
12a	1086059	Wire Assembly, Full Vat Left	1	
12b	1086058	Wire Assembly, Dual Vat	1	
13	8262264	Interface Board Kit SMT	1	[1]
13a	8074330	Speaker Adapter Harness SMT	1	
13b	8074343	Wire Harness, SMT Interface Board to Ignition Module	1	
13c	8064973	Interface Board, Australia	1	
14	8070833	Relay, DPDT 5A 12VDC Latch	1	[1]
15	8070834	Relay, SPDT 15A 12VDC Basket Lift	1	[1]
16	8102243	Spring, Relay Retaining	1	
17	1086052	Plate, Ignition Module	1	
18	8242090	Cover, Ignition Module	1	
19	8074812	Relay, 7-second Time Delay 120V	1	
19a	8074934	Relay, 7-second Time Delay 220V, 230V, 240V and 250V units	1	
20	1060531SP	Fuse Assembly, Inline	1	[7]
21	8072659	Switch, Momentary	1	[8]
22	8074403	Speaker SMT	1	

### PART NOTES:

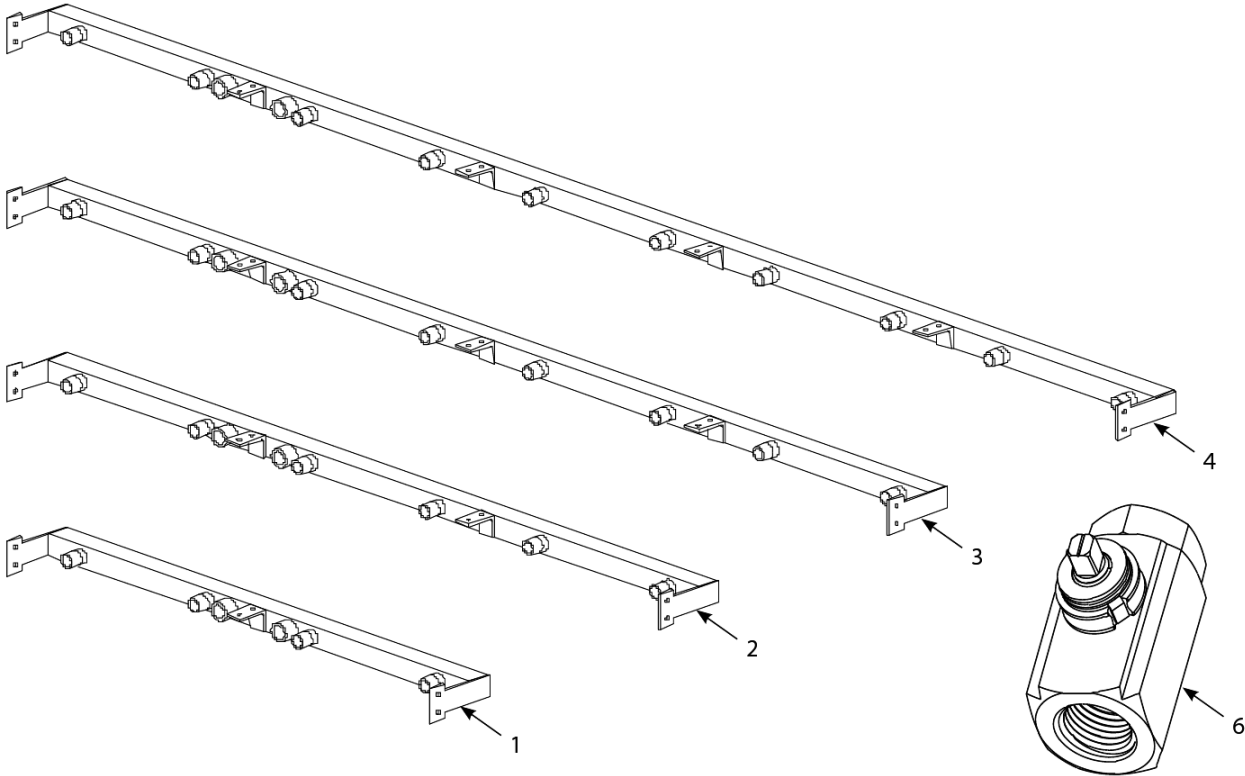
- [1] - Recommended Stock Part
- [2] - Domestic
- [3] - CE
- [4] - Australia
- [5] - non fused ignition modules
- [6] - CE, Non-CE, CSA and AGA, Recommended Stock Part
- [7] - not used on all models
- [8] - Control Power Reset

High-Limit Thermostat, Temperature Probe and Component Boxes



# FQE30U

## Oil Return Manifolds & Return Valve



# FQE30U

## Oil Return Manifolds & Return Valve

#	PART #	DESCRIPTION	QTY	Note
1	8103275	Manifold, Two-Station Fryer	1	
2	8103245	Manifold, Three-Station Fryer	1	
3	8103368	Manifold, Four-Station Fryer	1	
4	8103824	Manifold, Five-Station Fryer	1	
5	8130907	Cap, 0.9375-inch Valve Safety	1	
6	8103754	Valve, 0.5" NPT Rotary Actuator	1	

---

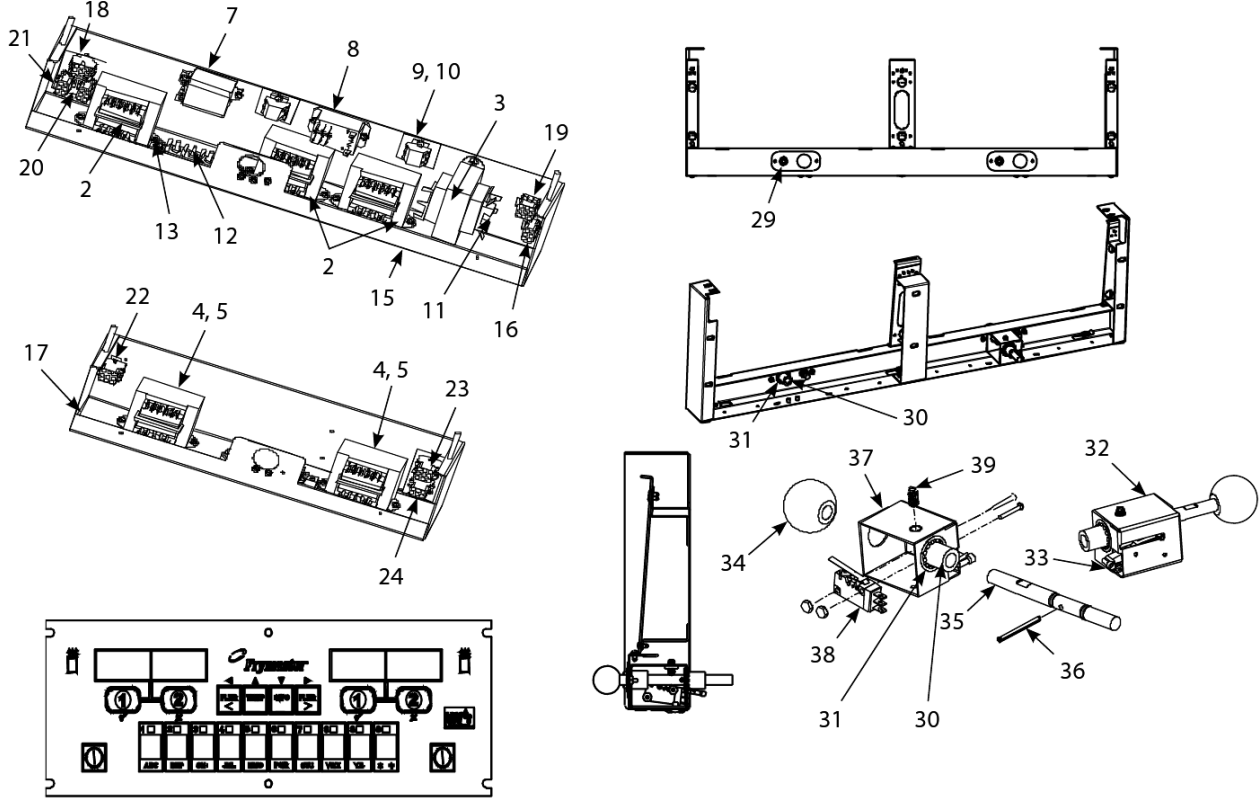
Oil Return Manifolds & Return Valve

FRY\_P\_0010\_11\_14\_Oil Return Manifolds & Return Valve.pdf



# FQE30U

## Tranformer Boxes and Control Panel Frames



# FQE30U

## Transformer Boxes and Control Panel Frames

#	PART #	DESCRIPTION	QTY	Note
1	1085658	Box Assembly, Transformer, GL230 and 430	1	
1a	1085746	Box Assembly, Transformer, GL330	1	
1b	1085808	Box Assembly, Transformer, GL230 CE Export	1	
1c	1085809	Box Assembly, Transformer, GL330 CE Export	1	
1d	1085959	Box Assembly, Transformer, FQ 430/530 CE Export 100v/120v	1	
1e	1085903	Box Assembly, Transformer, FQ 430/530 CE Export 208/222/230/240V	1	
2	8074978	Transformer - Dual Voltage 100-120V/12V 30VA /24V 50VA	1	[1]
3	8072181	Transformer, 100-120V/24V 62VA	1	[1]
4	8074978	Transformer - Dual Voltage 100-120V/12V 30VA /24V 50VA	1	[1]
5	8075129	Transformer - Dual Voltage 208-240V	1	
6	2206514	Spark Ignition Pilot - LP	1	[2]
7	8074346	Relay, DPDT 20A 120VAC	1	[3]
7a	8074770	Relay, DPDT 20A 240V	1	[3]
8	8074482	Relay, Filter 30A 24VDC DPDT	1	[2]
9	8160217	Insulation, Terminal Block Paper	1	
10	8101164	Block, One-Piece Screwless Terminal	1	
11	8071597	Fuse - 3amp Slo-Blow	1	[1]
12	8071973	Terminal, Post	1	
13	8070070	Terminal, Ground Lug	1	
14	2203191	Cover, Large Transformer Box	1	
15	8236324	Box, Large Transformer/Filter	1	
16	1068133SP	Cable Assembly, Transformer Box Line - CE Export	1	
16a	1085895	Cable Assembly, Transformer Box Line GL230, 330, 430, 230 and 330 CE Export and 430 CE Export Solid Shortening	1	
17	8237638	Box, Transformer/Filter GL30 4-Battery	1	
18	1085774	Cable Assembly, Transformer Box Filter Pump GL230, 330, 230 and 330 CE Export	1	
18a	1085894	Cable Assembly, Transformer Box Filter Pump GL230, 330, 230 and 330 CE Export Solid Shortening	1	
19	1080994SP	Cable Assembly, Transformer Box #1 GL230,330, 230 and 330 CE Export	1	
20	1080995SP	Cable Assembly, Transformer Box #2 GL230, 330, 230 and 330 CE Export	1	
21	1080996SP	Cable Assembly, Transformer Box #3 GL330 and 330 CE Export	1	
22	1085664	Cable Assembly, Transformer Box FQ430 and 530 Non-CE and CE Export	1	
23	1085663	Cable Assembly, Transformer Box FQ430 and 530 Non-CE and CE Export	1	
24	1085662	Harness Assembly, Cord set Female	1	
25	WIR1093	Wire Assembly, GL430/530	1	
25a	WIR0798	Wire Assembly, GL330 Transformer/Filter Box	1	
25b	WIR0799	Wire Assembly, GL230/430 Transformer/Filter Box	1	
26	1085777	Controller, FilterQuick™ Gas	1	[1]
27	8074403	Speaker SMT	1	
28	2600635	Bezel 2, 4 and 5 battery	1	
28a	2600684	Bezel 3 and 5 battery	1	

Transformer Boxes and Control Panel Frames

# FQE30U

## Transformer Boxes and Control Panel Frames

#	PART #	DESCRIPTION	QTY	Note
29	1085672	Harness, FilterQuick Drain with Light	1	
30	8104345	Bushing, 0.375" Shaft Flanged Sleeve Bronze	1	
31	8091107	Ring, 0.625" External Slef Locking Retaining	1	
32	1085731	Assembly, Rod Push Pull	1	
33	8071942	Terminal, Flag	1	
34	8104399	Knob, 1.375" Ball	1	
35	8104360	Rod, Push Pull	1	
36	8104362	Pin, 0.125" x 1.50 SS Slotted Spring	1	
37	8238864	Support, Rod Push Pull	1	
38	8074936	Switch, Micro Gold Plated	1	
39	8104397	Plunger, 0.25-20 SS Ball Nose Spring	1	
40	8074546	Controller Communication	1	[4]
40a	8074547	AIF Communication/Power	1	[5]
40b	8074850	Communication/Power	1	[6]
41	8075780	MIB Power/Pan Sw	1	[7]
42	8075789	Harness, MIB -Bulk connector	1	
43	8074655	Harness RTD Medium	1	[8]
43a	8074845	FV/DV Harness RTD Extension 28"	1	[8]
43b	8262706	Probe Kit	1	
43c	8074621	FV/DV Harness RTD Short	1	[8]
44	8074771	ATO Power	1	[9]
44a	1069544	Long Top-off Power	1	[10]
44b	8074671	ATO Pump/JIB Reset/Bulk Fresh Oil Solenoid Harness	1	
44c	8074843	ATO Pump/JIB Reset Harness Non-Bulk	1	
45	1068977SP	Long Top-off Power Domestic	1	[11]
45a	1081589SP	Long Top-off Power CE and Export	1	[11]
46	8074657	Jumper	1	[12]
47	8074573	Controller Locator Wire	1	[13]
48	8074552	Communications Terminator	1	[14]
49	8067742SP	Power Cord - 120V Fryer and Motor with Ring Terminals	1	
49a	1060516	Cord set, 220-250V CE/Export Fryer and Motor with Ring Terminals	1	
50	8074660PK	SMT Pin Service Repair Kit	1	[1]
50a	2302345	SMT Pin Extractor	1	[1]

### PART NOTES:

- [1] - Recommended Stock Part
- [2] - Recommended Stock
- [3] - Control Reset Button, Recommended Stock Part
- [4] - used from Controller to Controller
- [5] - used from AIF to AIF and AIF to ATO
- [6] - used from MIB to AIF
- [7] - used from Transformer and Fltr Rly to MIB and Pan Sw
- [8] - used from RTD to ATO Board
- [9] - used from Transformer to ATO Board
- [10] - 4 and 5 battery only
- [11] - used between Transformer Box to ATO Box

Transformer Boxes and Control Panel Frames

# FQE30U

## Transformer Boxes and Control Panel Frames

#	PART #	DESCRIPTION	QTY	Note
[12]	-	used on 4 and 5 battery ATO board plug J5 pin 7 and 8		
[13]	-	used from Controller to Interface Board		
[14]	-	used on Controller pin J6 and ATO board pin J10 to terminate network		