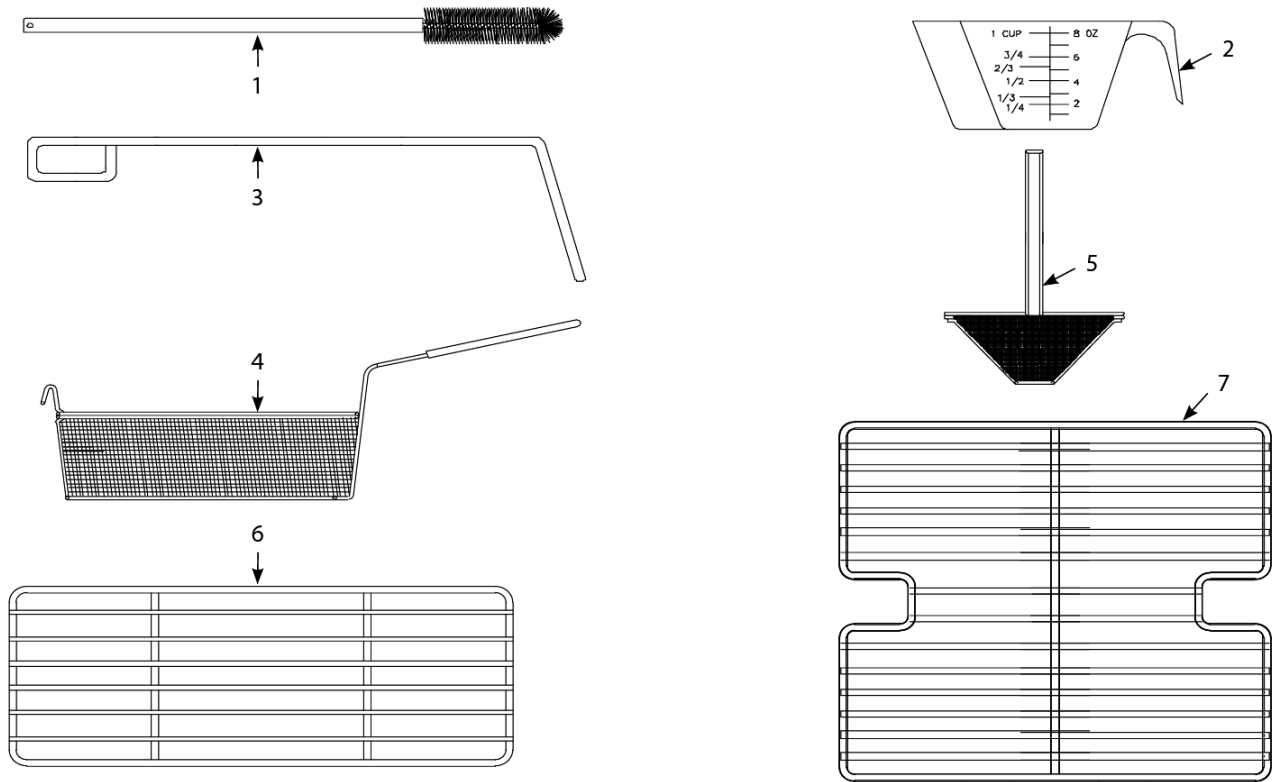


H14/H17/H22 Series Electric Fryers

Accessories



H14/H17/H22 Series Electric Fryers

Accessories

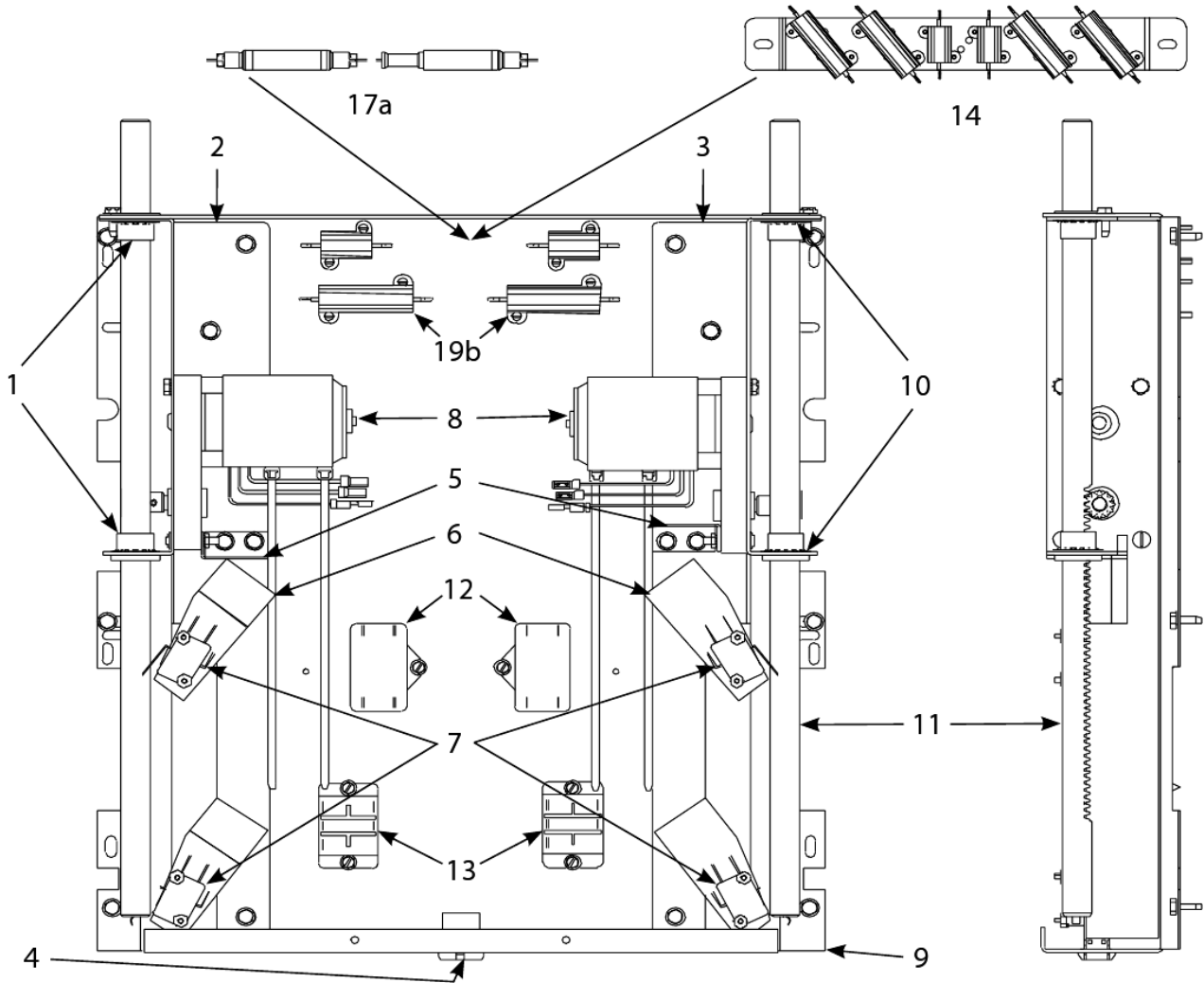
#	PART #	DESCRIPTION	QTY	Note
1	8030209	Brush, Frypot	1	
2	8030046	Cup, Plastic Filter Powder Measuring	1	
3	8030197	Fryer's Friend	1	[1]
4	8030099	Basket, Full Size	1	
4a	8030271	Basket, Twin Size	1	
5	8030113	Sediment Tray, Full-vat	1	
5a	8030122	Sediment Tray, Dual-vat, Left	1	
5b	8030123	Sediment Tray, Dual-vat, Right	1	
6	8030106	Rack, Electric Dual-Vat Basket Support	1	
7	8030132	Rack, Full-Vat Basket Support	1	
8	8030002	Powder, Filter	1	
9	8030170	Filter Paper, 16.5" x 25.75"	1	
10	8063068	Cover, Full-Vat Frypot	1	
10a	8063071	Cover, Dual Vat Frypot	1	

PART NOTES:

[1] - Clean-out Rod

H14/H17/H22 Series Electric Fryers

Basket Lift Assemblies and Component Parts



H14/H17/H22 Series Electric Fryers

Basket Lift Assemblies and Component Parts

#	PART #	DESCRIPTION	QTY	Note
1	8130035	Bushing , Oiltite .640 I.D.	1	
2	9018499	Chassis, Left Basket Lift	1	
3	9028499	Chassis, Right Basket Lift	1	
4	8070158	6-Pin Female	1	
5	9005529	Gusset, Basket Lift Motor	1	
6	8120442	Insulation, Microswitch	1	
7	8072572	Microswitch	1	
8	8065964SP	Motor Assembly - 208-240V	1	
9	2002942	Mount, Modular Basket Lift	1	
9a	9007655	Mount, Modular Basket Lift**, For use on units with 6-pin connectors	1	
10	8090082	Ring, Bushing Retainer	1	
11	8101012	Rod, Basket Lift	1	
11a	8237052	Weldment, Vent 2-battery, 5 battery and 6-battery	1	
11b	8237053	Weldment, Vent 3-battery and 5-battery	1	
12	8072133	Common Components, Capacitor, 12.5 mFarad, 250VAC Motor	1	
13	8071683	Relay, 12VDC Secondary Blower Fan to cool frypot	1	[1]
14	1062770	Resistors, Resistor Assembly, Modular Basket Lift, 200-250 v	1	[2]
15	WIR0166	Wire Assemblies	1	
15a	8068555SP	Wire Assemblies**, For 202-250V Modular Basket Lift w/6-Pin Connector	1	
15b	1061804SP	Wire Bundle - 208-250V Modular Basket Lift	1	
16	1061807SP	Basket Lift Assemblies, 100-120V w/o Relay	1	[2]
16a	WIR00482	Wire Assemblies	1	
16b	8068531SP	Complete Assemblies #2, 100/120V w/o Relay	1	[2]
17	WIR0073SP	Wire Assemblies, For 1061807SP	1	[3]
17a	8068530	Resistors, Resistor Assembly, Modular Basket Lift	1	
18	1061808SP	Basket Lift Assy, 100-120VAC w/Relay	1	[2]
19	8068532SP	Complete Assemblies #4, 100/120V w/Relay	1	[2]
19a	WIR0292	Wire Assemblies	1	
19b	8069185	Resistor Assembly, CE, 208-250V Modular Basket Lift	1	[4]
20	1061809SP	Complete Assemblies #5, 200/208/220V w/o Relay	1	[5]
21	8068685SP	Complete Assemblies #6, 200/208/220V w/o Relay	1	[2]
22	1061805SP	Basket Lift Assy, 200-220VAC w/Relay	1	[2]
23	8068086SP	Complete Assemblies #8, 200/208/220V w/Relay	1	[2]
24	1061810SP	Basket Lift Assemblies, 202-250V w/o Relay	1	[5]
25	8068686SP	Complete Assemblies #10, 230/240/250V w/o Relay	1	[6]
26	1061806SP	Basket Lift Assy, 230-250VAC w/Relay	1	[2]
27	8068087SP	Complete Assemblies #12, 230/240/250V w/Relay	1	[2]

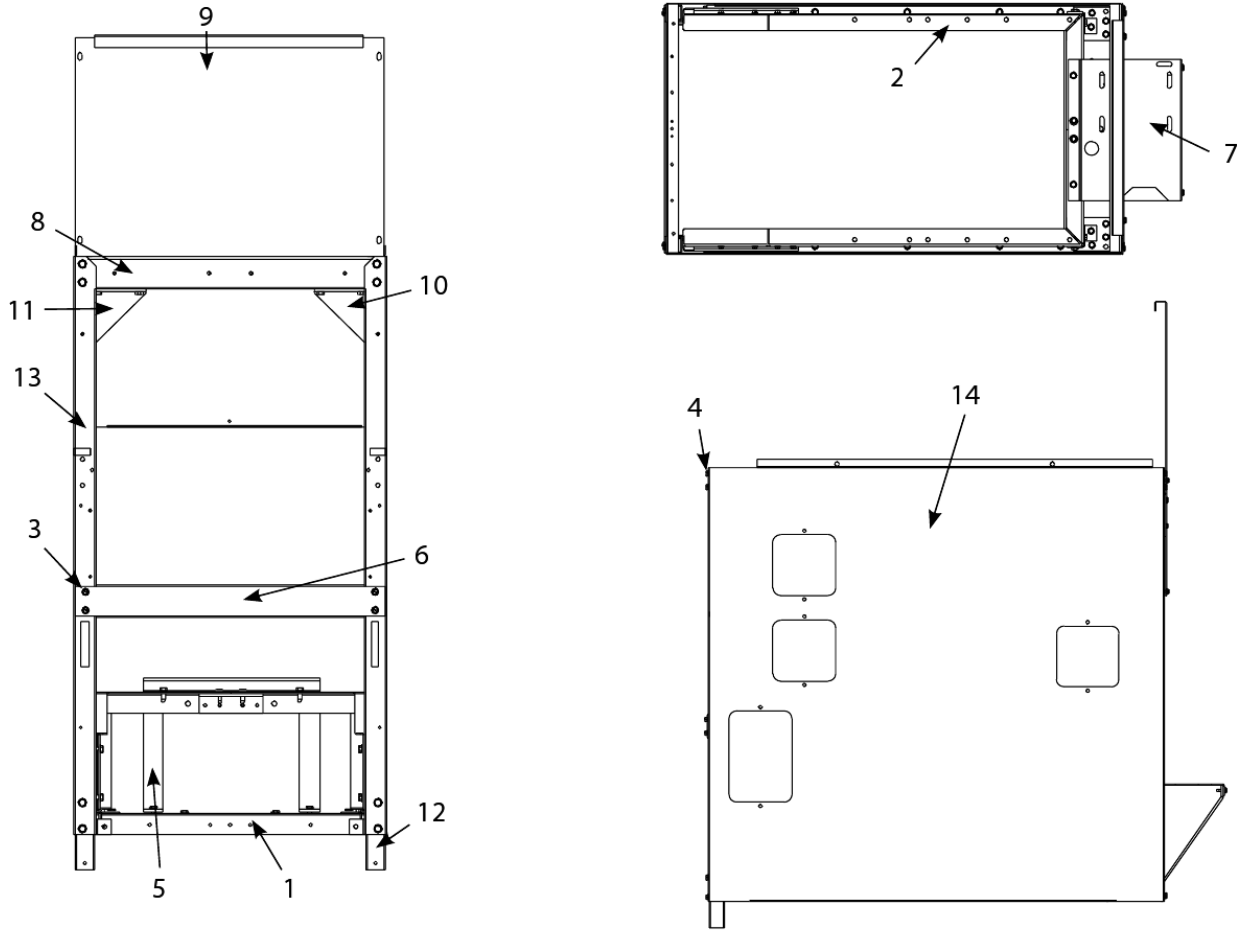
PART NOTES:

- [1] - All Basket Lifts w/Relays
- [2] - for 6-pin assembly
- [3] - for 6-pin MBL assembly
- [4] - before 11/02
- [5] - for 12-pin assembly
- [6] - (for 6-pin assembly)

Basket Lift Assemblies and Component Parts

H14/H17/H22 Series Electric Fryers

Cabinet Assemblies - Battered Option—Filter Ready



Cabinet Assemblies - Battered Option—Filter Ready

H14/H17/H22 Series Electric Fryers

Cabinet Assemblies - Battered Option—Filter Ready

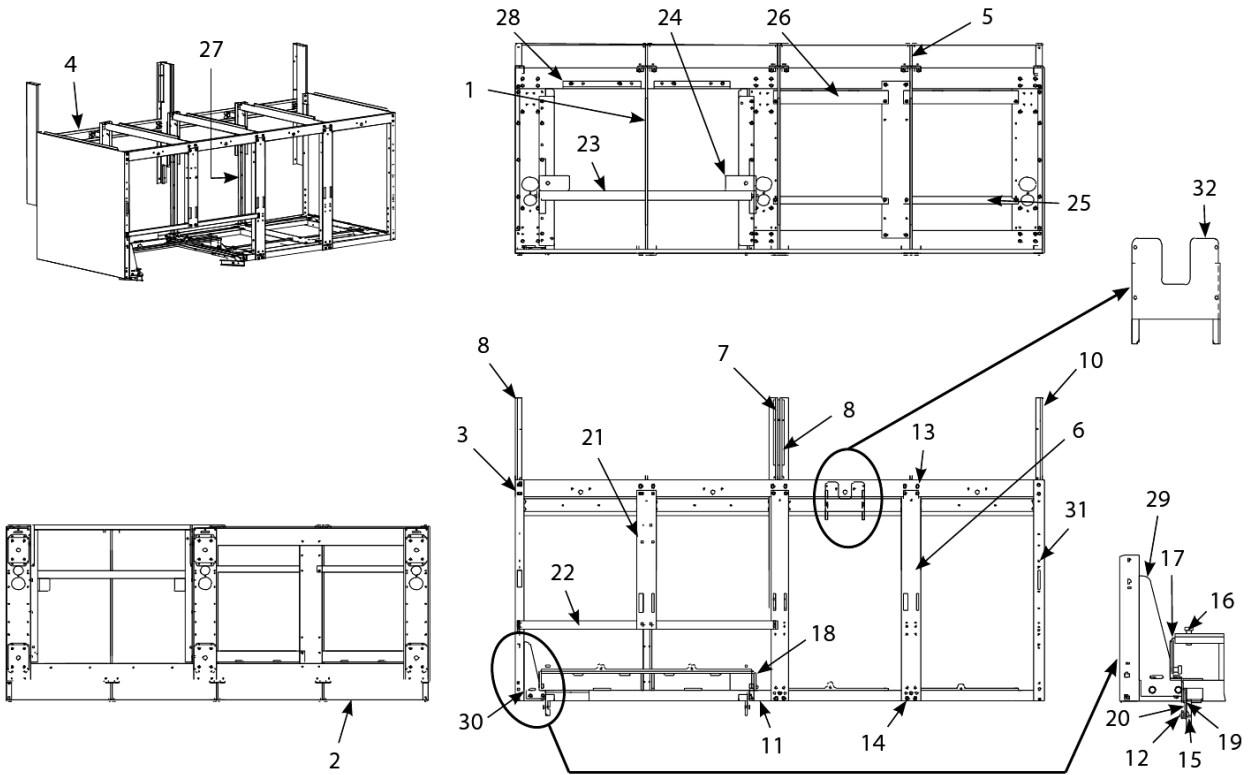
#	PART #	DESCRIPTION	QTY	Note
1	8064897SP	Base, Single FootPrint	1	
2	8065317SP	Filter Rail Assembly, Single FP	1	
3	8261371	Screw - #8 x 0.5" Hex Head ZP	1	
4	8261374	Screw - #10 x 0.5" Hex Head	1	
5	9001786	Motor Mount, Cantilever Bracket	1	
6	9004391	Brace, Cabinet Front	1	
7	9004551	Motor Mount, Single FootPrint	1	
8	9004813	Brace, Cabinet Top Single	1	
9	9007448	Back, Top, FPH 50	1	
10	9011405	Gusset, Cabinet FP-TCF Left	1	
11	9021405	Gusset, Cabinet FP-TCF Right	1	
12	9108673	Leg, Front Filter w/Swivel Caster	1	
13	9119324	Side, Cabinet, Left, Stainless Steel	1	
14	9129324	Side, Cabinet, Right, Stainless Steel	1	
14a	9029324	Side, Cabinet, Right, Cold Rolled Steel	1	
15	9100889	Cover, 4" x 4" S/S	1	
15a	900889	Cover, 4" x 4" S/S	1	[1]
15b	9100890	Cover, 4" x 6" S/S	1	
15c	9000890	Cover, 4" x 6" S/S	1	[1]
16	8090359	Screw, 8 x 0.25-inch Hex Washer Head	1	

PART NOTES:

[1] - enameled steel

H14/H17/H22 Series Electric Fryers

Cabinet Assemblies - Filter Magic II and Non-Filter Options



Cabinet Assemblies - Filter Magic II and Non-Filter Options

H14/H17/H22 Series Electric Fryers

Cabinet Assemblies - Filter Magic II and Non-Filter Options

#	PART #	DESCRIPTION	QTY	Note
1	2000076	Divider, Cabinet Common Electric	1	
2	2000084	Brace, Rear Horizontal-Double Common Electric	1	
2a	2000085	Brace, Rear Horizontal-Triple Common Electric	1	
3	2000091	Brace (Rail), Top Quad Common Electric	1	
3a	2000072	Brace (Rail), Top Triple Common Electric	1	
3b	2000081SP	Brace (Rail), Top Double Common Electric	1	
4	2000092	Support, Rear Common Electric	1	
5	2000126	Brace, Rear Support	1	
6	2000138	Doorpost, Common Electric	1	
7	2010093	Enclosure, Rear Upright with Hole	1	[1]
8	2010137	Upright- rear enclosure, Common Electric, N/F	1	
9	2020093	Enclosure, Rear Upright with Hole	1	[1]
10	2020137	Upright- rear enclosure, Common Electric, N/F	1	
11	8067005SP	Base, Filter Assembly, Common Electric- Quad	1	
11a	8066513SP	Base, Filter Assembly, Common Electric- Triple	1	
11b	8066511SP	Base, Filter Assembly, Common Electric- Double	1	
11c	8066997SP	Base Assembly, Common Electric N/F- Double	1	
11d	8066999SP	Base Assembly, Common Electric N/F- Triple	1	
11e	8067001SP	Base Assembly, Common Electric N/F- Quad	1	
12	8261376	Nut - #10-32 Keps Hex	10	
13	8261374	Screw - #10 x 0.5" Hex Head	25	
14	8090413	Spacer, Door Post (0.25-inch ID x 4mm nylon washer)	1	[2]
15	8090422	Screw, 10-32 x 0.4375-inch Slotted Truss Head	1	
16	8090538	Bolt, Shoulder- 0.25-20 x 0.375	1	
17	8232290	Front Bridge Support, Left	1	
18	8232291	Front Bridge Support, Right	1	
19	9001957	Lock, Filter	1	
20	9001959	Bracket, Filter Lock Mounting	1	
21	9002463	Post, Center Door, Common Electric	1	
22	9002464SP	Brace, Lower, Front Horizontal, Common Electric	1	
23	9002514	Bridge, Common Electric	1	
24	9002653	Plate, Swivel, Common Electric	1	
25	9002718	Brace, Contactor, Front, Common Electric w/Filter-Quad	1	
25a	2000078	Brace, Front Contactor Box Common Electric	1	
25b	2000075	Shield, MH152 Base (After 5 Nov 2000)	1	[3]
26	9002720	Brace, Contactor, Rear, Common Electric-Quad	1	
26a	2000077	Brace, Rear Contactor Box	1	
26b	2000074	Support, Rear Contactor Box	1	
27	9002861SP	Support, Bottom Common Electric	1	
28	9005988	Support, Rear, Bridge Filter, Common Electric	1	
29	9011810	Gusset, Left Cabinet	1	
29a	9021810	Gusset, Right Cabinet (BIH252)	1	
30	9011948	Channel, Universal Side Support	1	
31	9102456SP	Cabinet Side, Common Electric N/F	1	
31a	9002456SP	Side, Cabinet—Cold Rolled Steel Common Electric	1	
31b	9012843SP	Side, FM Common Electric w/Cut-out Left Cabinet, Enameled Steel	1	

Cabinet Assemblies - Filter Magic II and Non-Filter Options

H14/H17/H22 Series Electric Fryers

Cabinet Assemblies - Filter Magic II and Non-Filter Options

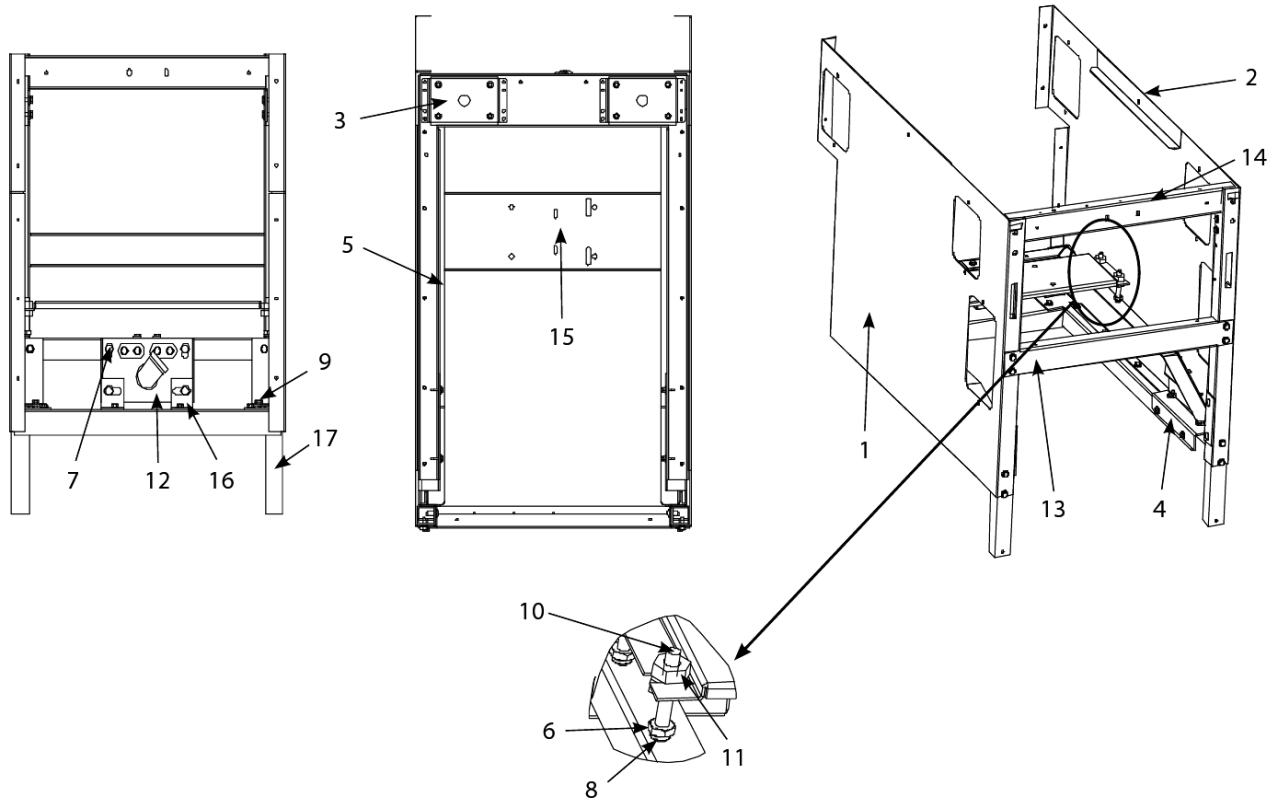
#	PART #	DESCRIPTION	QTY	Note
31c	9022843SP	Side, FM Common Electric w/Cut-out Right Cabinet, Enameled Steel	1	
31d	9112843SP	Side, FM Common Electric w/Cut-out Left Cabinet, Stainless Steel	1	
31e	9122843SP	Side, FM Common Electric w/Cut-out Right Cabinet, Stainless Steel	1	
31f	9008451	Back, Lower Triple	1	
31g	9008450	Back, Lower Double	1	
31h	9005145	Back, Center Triple	1	
31i	9005143	Back, Center Double	1	
31j	9009635	Back, Upper Triple	1	
31k	9009637	Back, Upper Double	1	
32	9009585	Heat Shield, Wire, Common Electric	1	

PART NOTES:

- [1] - Quad Only
- [2] - 0.25-inch ID x 4mm nylon washer
Quad and Triple Only
- [3] - After 5 Nov 2000

H14/H17/H22 Series Electric Fryers

Cabinet Assemblies - Filter Magic Under-Counter (after 8_2000)



Cabinet Assemblies - Filter Magic Under-Counter (after 8_2000)

H14/H17/H22 Series Electric Fryers

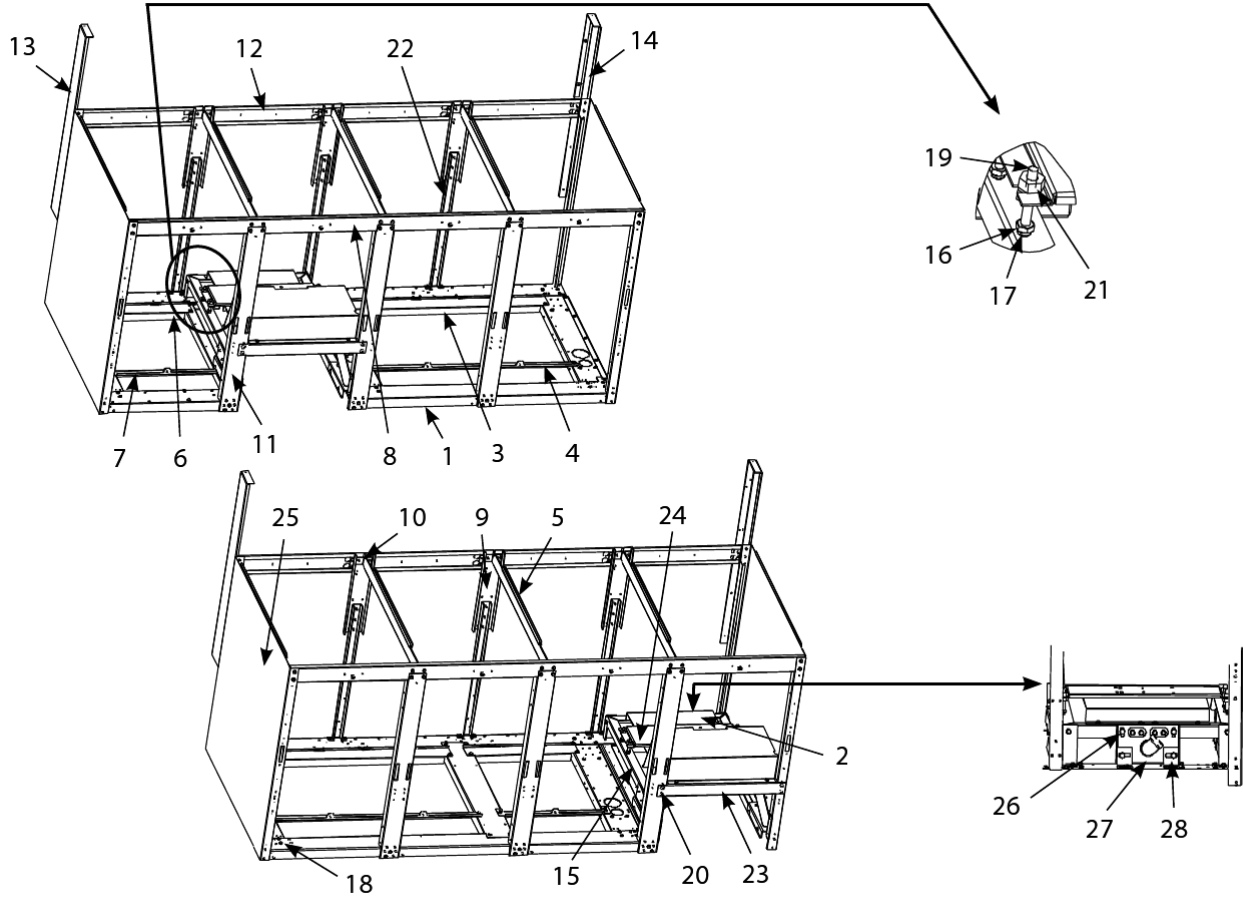
Cabinet Assemblies - Filter Magic Under-Counter (after 8_2000)

#	PART #	DESCRIPTION	QTY	Note
1	2010483	Side, Cabinet U/C Enameled – Left	1	
1a	2110483	Side, Cabinet U/C Stainless Steel – Left	1	
2	2020483	Side, Cabinet U/C Enameled – Right	1	
2a	2120483	Side, Cabinet U/C Stainless Steel – Right	1	
3	8068059	Leg Pad Assembly	1	
4	8068062SP	Filter Rail Assembly, Common Electric FM	1	
5	8068935SP	Base Assembly, FM 3-Piece	1	
6	8261362	Nut - 0.25"-20 Hex	10	
7	8261389	Screw - 0.25"-20 x 0.75" Hex Head ZP	10	
8	8090191	Washer, Lock 0.25 Spring ZP	1	
9	8261374	Screw - #10 x 0.5" Hex Head	25	
10	8090429	Bolt - 0.25"— 20 x 2.00" Hex Head ZP Tap	1	
11	8100665	Leveling Nut	1	
12	8232827	Mount (Weld Assembly) Common Electric Single FP	1	
13	9004391	Brace, Cabinet Front	1	
14	9004785	Brace, Cabinet – Top and Center	1	
15	9008582	Mount, Motor- Single FP Common Electric	1	
16	9008591	Bracket, Mount – Common Electric Single FP	1	
17	9108659	Leg, Cabinet Front— Common Electric Single FootPrint	1	

Cabinet Assemblies - Filter Magic Under-Counter (after 8_2000)

H14/H17/H22 Series Electric Fryers

Cabinet Assemblies - Filter Magic Unitary Cabinetry (after 8-2000)



Cabinet Assemblies - Filter Magic Unitary Cabinetry (after 8-2000)

H14/H17/H22 Series Electric Fryers

Cabinet Assemblies - Filter Magic Unitary Cabinetry (after 8-2000)

#	PART #	DESCRIPTION	QTY	Note
1	1060215	Base Assembly, Quad—FM Common Electric (1F24)	1	
1a	1060217	Base Assembly, Quad—FM Common Electric (31F2)	1	
1b	1060218	Base Assembly, Quad—FM Common Electric (531F)	1	
1c	1060220	Base Assembly, Quad—FM Common Electric (F246)	1	
1d	1060214	Base Assembly, Triple—FM Common Electric (1F2)	1	
1e	1060216	Base Assembly, Triple—FM Common Electric (31F)	1	
1f	1060219	Base Assembly, Triple—FM Common Electric (F24)	1	
1g	1060221	Base Assembly, Double—FM Common Electric (F2)	1	
1h	1060222	Base Assembly, Double—FM Common Electric (1F)	1	
2	2000020	Shield, Filter Magic Pan CE	1	
3	2000074	Support, Rear Contactor Box	1	
4	2000075	Shield, MH152 Base (After 5 Nov 2000)	1	[1]
5	2000076	Divider, Cabinet Common Electric	1	
6	2000077	Brace, Rear Contactor Box	1	
7	2000078	Brace, Front Contactor Box Common Electric	1	
8	2000091	Brace (Rail), Top Quad Common Electric	1	
8a	2000072	Brace (Rail), Top Triple Common Electric	1	
8b	2000081SP	Brace (Rail), Top Double Common Electric	1	
9	2000092	Support, Rear Common Electric	1	
10	2000126	Brace, Rear Support	1	
11	2000138	Doorpost, Common Electric	1	
12	2000343	Brace, Rear Horizontal-Quad Common Electric	1	
12a	2000085	Brace, Rear Horizontal-Triple Common Electric	1	
12b	2000084	Brace, Rear Horizontal-Double Common Electric	1	
13	2010137	Upright- rear enclosure, Common Electric, N/F	1	
14	2020137	Upright- rear enclosure, Common Electric, N/F	1	
15	8068062SP	Filter Rail Assembly, Common Electric FM	1	
16	8261362	Nut - 0.25"-20 Hex	10	
17	8090191	Washer, Lock 0.25 Spring ZP	1	
18	8261374	Screw - #10 x 0.5" Hex Head	25	
19	8090429	Bolt - 0.25"— 20 x 2.00" Hex Head ZP Tap	1	
20	8261379	Screw, #10 X 0.5-inch Phillips Truss Head	10	
21	8100665	Leveling Nut	1	
22	9002861SP	Support, Bottom Common Electric	1	
23	9004391SP	Brace, Cabinet Front	1	
24	9008582	Mount, Motor- Single FP Common Electric	1	
25	9102456SP	Cabinet Side, Common Electric N/F	1	
25a	9002456SP	Side, Cabinet—Cold Rolled Steel Common Electric	1	
26	8261389	Screw - 0.25"-20 x 0.75" Hex Head ZP	10	
27	8232827	Mount (Weld Assembly) Common Electric Single FP	1	
28	9008591	Bracket, Mount – Common Electric Single FP	1	

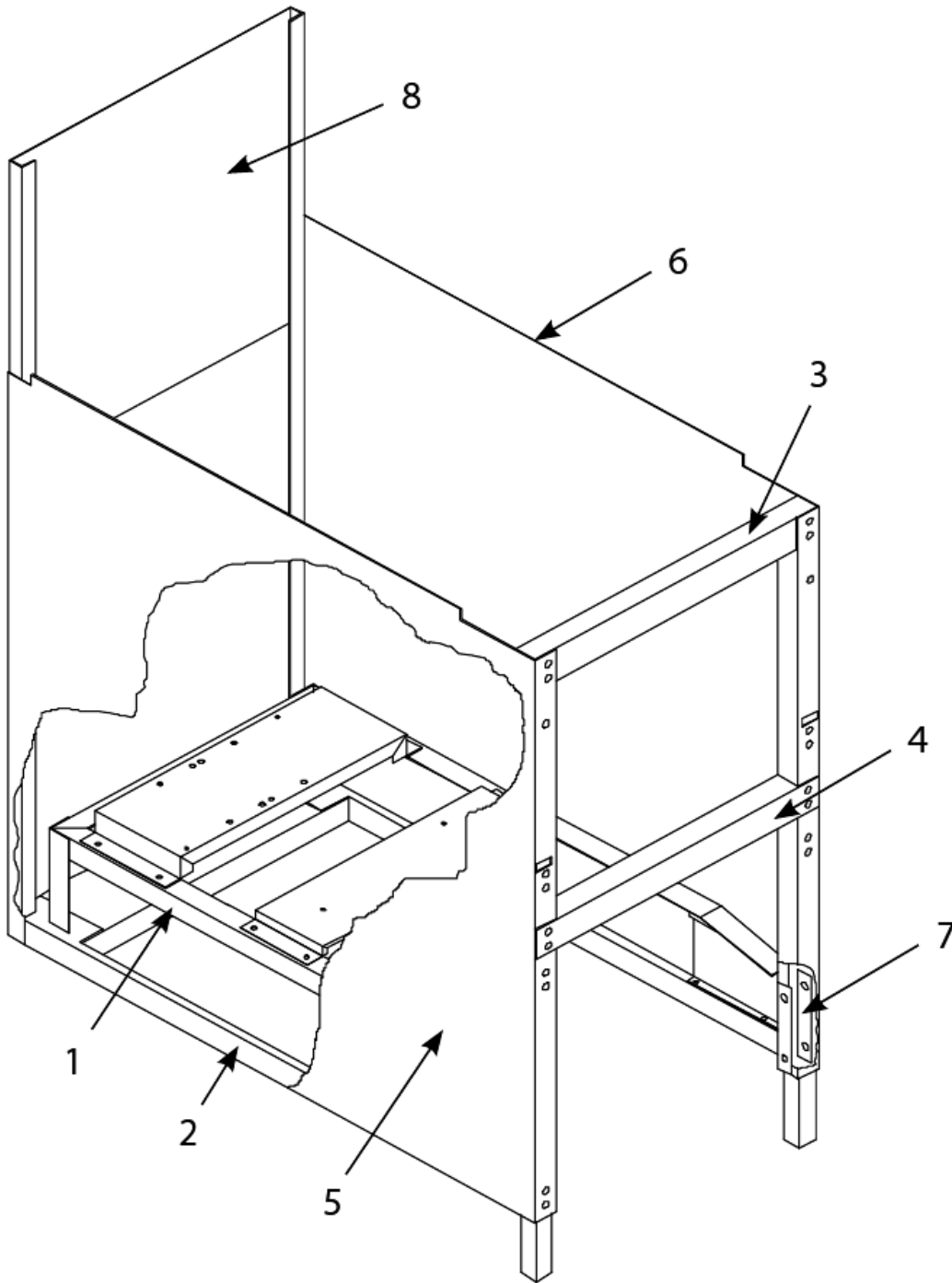
PART NOTES:

[1] - After 5 Nov 2000

Cabinet Assemblies - Filter Magic Unitary Cabinetry (after 8-2000)

H14/H17/H22 Series Electric Fryers

Cabinet Assemblies - Non-Filter



Cabinet Assemblies - Non-Filter

H14/H17/H22 Series Electric Fryers

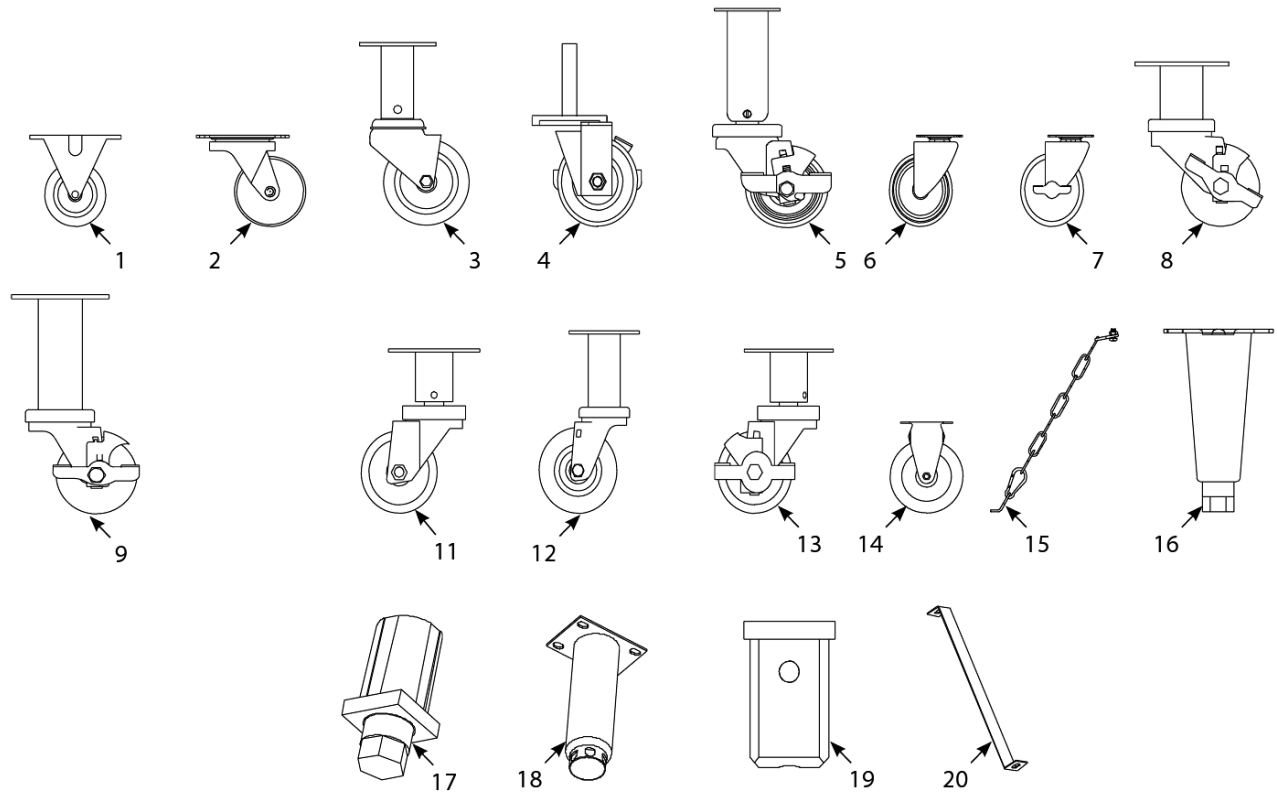
Cabinet Assemblies - Non-Filter

#	PART #	DESCRIPTION	QTY	Note
1	8064910SP	Rail Assembly, Single FootPrint	1	
1a	2000129	Rail, Top Front Single Common Electric N/F	1	
2	8064897SP	Base, Single FootPrint	1	
2a	8067003SP	Base Assembly, Single Common Electric, N/F	1	
3	9004393SP	Brace, Top, Single FootPrint	1	
4	9004391SP	Brace, Cabinet Front	1	
4a	9002733	Brace, Contactor Box, Front, N/F	1	
4b	9002734	Brace, Support Contactor Box, Common Electric, N/F	1	
4c	2000130	Brace, Rear Horizontal, Common Electric, N/F	1	
4d	2010137	Upright- rear enclosure, Common Electric, N/F	1	
4e	2020137	Upright- rear enclosure, Common Electric, N/F	1	
5	9119314	Left Side, Cabinet, Stainless Steel	1	
5a	9019314	Left Side, Cabinet, Enameled Steel	1	
6	9129314	Right Side, Cabinet, Stainless Steel	1	
6a	9029314	Right Side, Cabinet, Enameled Steel	1	
6b	9102456SP	Cabinet Side, Common Electric N/F	1	
7	9001621	Plate, Rail Mount	1	
8	9102912	Back, Upper Cabinet, Single FootPrint	1	
8a	9005204	Back, Cabinet, 22kW Single FP	1	
8b	9004412	Bracket, Component, 22kW Single FP	1	
8c	9002717SP	Back, Upper Cabinet, Common Electric, N/F	1	
8d	9005141	Back, Center Cabinet, MH114	1	
8e	9008449	Back, Lower Cabinet with U-shaped Cutout	1	
8f	2004581	Back, Lower Cabinet without U-shaped Cutout	1	
8g	9107925	Mounting Leg for Caster 8232669	1	
8h	9009585	Heat Shield, Wire, Common Electric	1	
8i	8261374	Screw - #10 x 0.5" Hex Head	25	
8j	8261389	Screw - 0.25"-20 x 0.75" Hex Head ZP	10	
8k	8261334	Bolt, 0.25-20 X 1.25 Hex Head	5	
8l	8261368	Nut - 0.25-20 Serrated Flange	10	
8m	8090070	Nut, 0.25-20 Hex, S/S	1	
8n	8090191	Washer, Lock 0.25 Spring ZP	1	

Cabinet Assemblies - Non-Filter

H14/H17/H22 Series Electric Fryers

Casters, Legs and Associated Hardware



Casters, Legs and Associated Hardware

H14/H17/H22 Series Electric Fryers

Casters, Legs and Associated Hardware

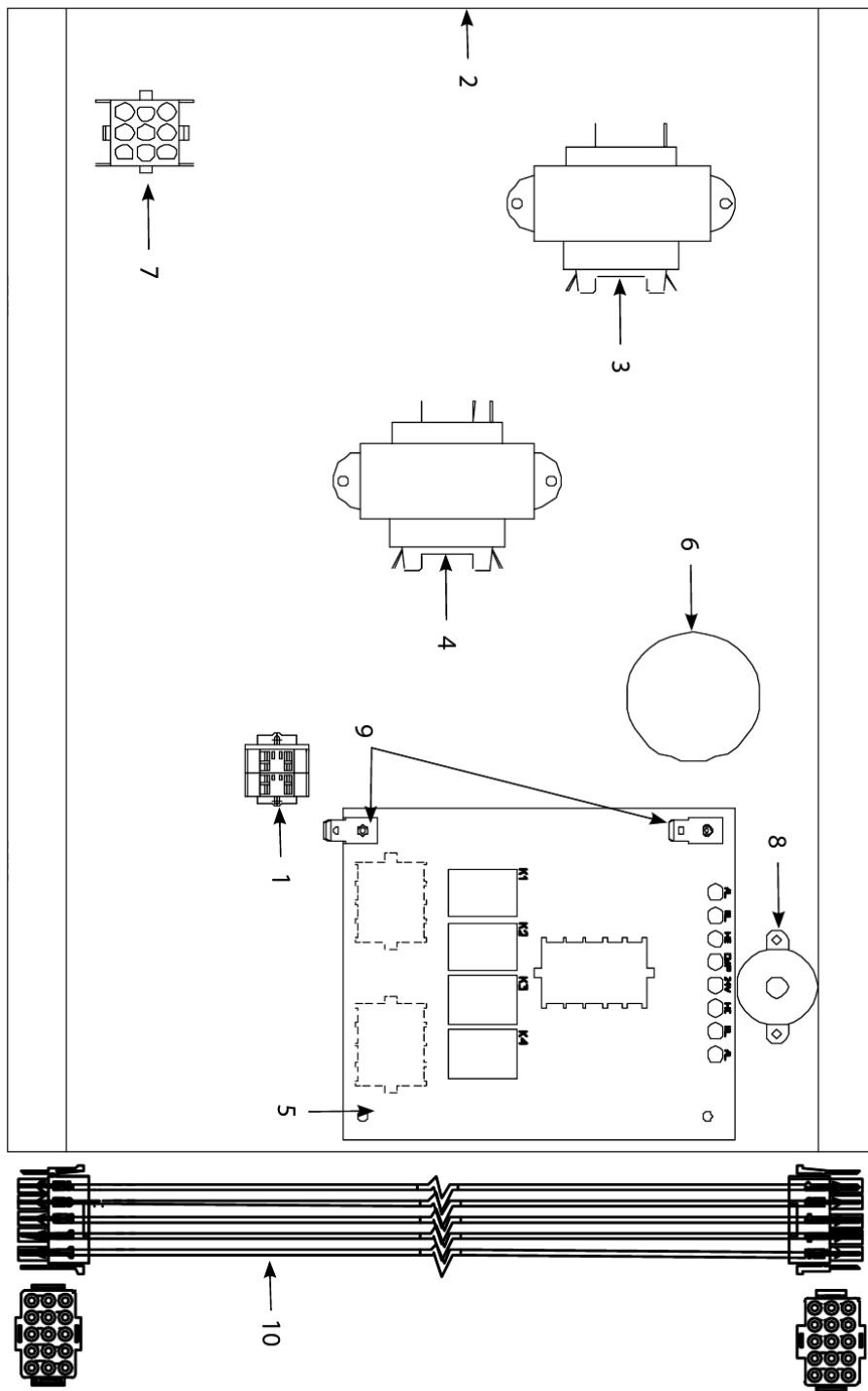
#	PART #	DESCRIPTION	QTY	Note
1	8102807	Caster - 2" Rigid	1	
2	8102805	Caster - 2"	1	
3	8100327	Caster 4" without Brake	1	
4	8101565	Caster, Stud, Single FP 3-inch, With Lock	1	
4a	8232844	Caster, BIH152 Front	1	
5	8100944	Caster 3" with Brake	1	
6	8100356	Caster without Brake - 5"	1	
7	8100357	Caster with Brake - 5"	1	
8	8100651	Caster w/Brake –FootPrint II	1	
9	8100944	Caster 3" with Brake	1	
11	8101367	Caster, Adjustable 3-inch w/o Brake	1	
12	8101494	Caster, 8.5-inch Swivel w/o Brake	1	
12a	8102738	Caster, 8.5-inch Swivel w/o Brake	1	[1]
13	8101365	Caster, Adjustable 3-inch w/Brake	1	
14	8100378	Caster, Stationary- 5" Rigid	1	
15	8260900	Kit, Chain Restraint	1	[2]
16	8263320	Leg - 4 Pack	1	[3]
17	8100007	Leg, Square Tube	1	[4]
18	8261234	Leg, Adjustable, 8.5-inch	1	[5]
19	8101414	Insert, BIH152 Square Leg	1	
19a	9107925	Mounting Leg for Caster 8232669	1	
19b	9101601	Leg, Square, Filter Cabinet Front	1	
19c	9108659	Leg, Cabinet Front— Common Electric Single FootPrint	1	
20	9002941	Strap, Anchor—Common Electric	1	
20a	9001835	Strap, Anchor—Single Fryers with Legs	1	

PART NOTES:

- [1] - for Cracker Barrel units
- [2] - for use on fryers w/casters
- [3] - 4 per set
- [4] - For 1.25-inch square tubing
- [5] - with hardware

H14/H17/H22 Series Electric Fryers

Component Box Assemblies and Associated Hardware



Component Box Assemblies and Associated Hardware

H14/H17/H22 Series Electric Fryers

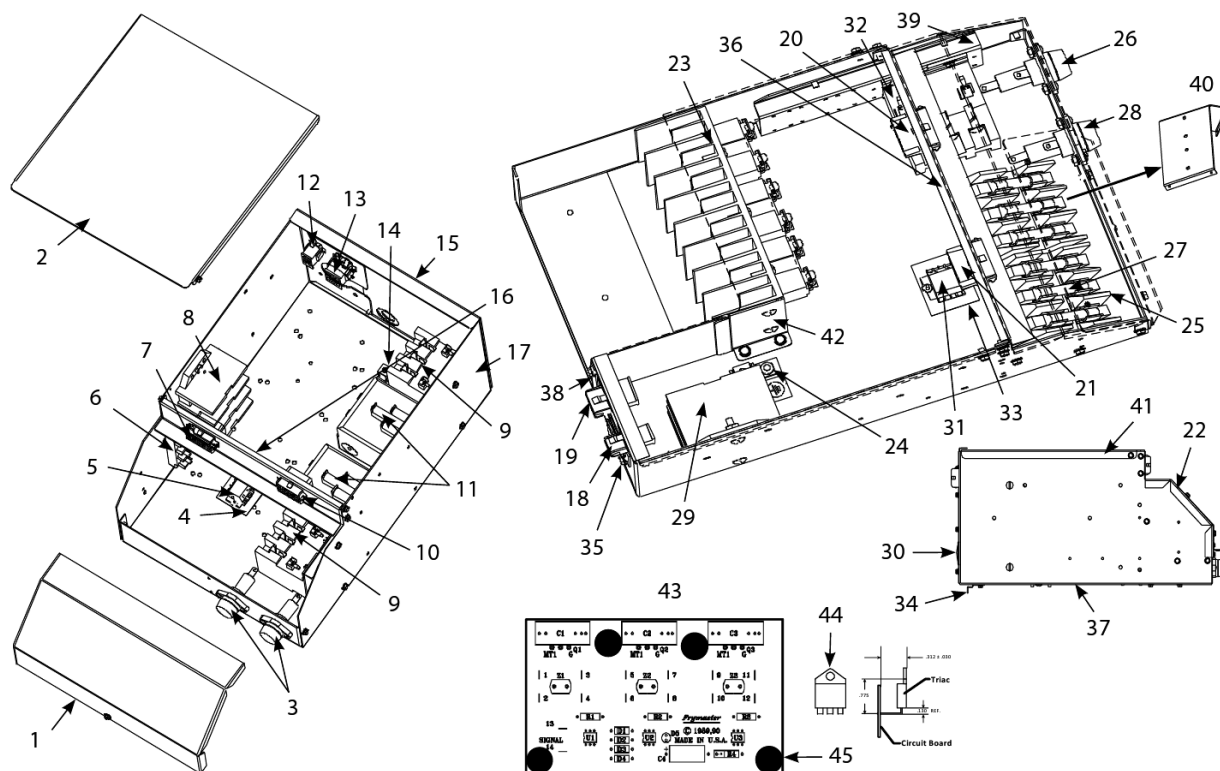
Component Box Assemblies and Associated Hardware

#	PART #	DESCRIPTION	QTY	Note
1	8101164	Block, One-Piece Screwless Terminal	1	
2	8068244	Component Box/Stud Assembly	1	
3	8072191	Transformer - 208-240V -12V 30VA	1	
3a	8070979	Transformer, 208V/240V/12V	1	
3b	8072192	Transformer, 12VAC, 100-120V	1	
3c	8070855	Transformer - 120V/50-60 Hz - 12V 20VA	1	
4	8070680	Transformer, 208V, 50/60Hz -24V 20VA	1	
4a	8072180	Transformer - 208-240V/24V 50A	1	
4b	8072181	Transformer, 100-120V/24V 62VA	1	
4c	8070800	Transformer, 100-120V/24V 50VA Filter and MIB	1	
4d	8075129	Transformer - Dual Voltage 208-240V	1	
5	8066336	Interface Board, KFC-1	1	
5a	8063850	Interface Board, HE EF Models w/Rear Probe	1	
5b	8066347	Interface Board, Solid State (Triac) Models	1	
5c	1062982	Interface Board, Fast Computer	1	
5d	8073932	Relay, Heat/Latch 12VDC SPDT 12 Amp Sealed	1	
6	8071084	Bushing	1	
7	8066854SP	Wiring Assembly, Transformer	1	
8	8067179	Sound Device	1	
9	8261337	Tab, 0.25-inch Terminal	5	
10	8062071	Cable, Computer/Controller to Interface Board	1	

Component Box Assemblies and Associated Hardware

H14/H17/H22 Series Electric Fryers

Contactor Box Components - Mercury Contactor and Solid State Relays (Triac)



Contactor Box Components - Mercury Contactor and Solid State Relays (Triac)

H14/H17/H22 Series Electric Fryers

Contactors Box Components - Mercury Contactor and Solid State Relays (Triac)

#	PART #	DESCRIPTION	QTY	Note
1	9005445	Front Cover, Contactor Box	1	
2	9005446	Top Cover, Contactor Box	1	
3	8070922	Holder, Bus Fuse	1	
3a	8072278	Fuse, 20 Amp	1	
3b	8072279	Fuse, 15 Amp	1	
3c	8070501	Fuseholder block	1	
3d	8072240	Fuse, 60 AMP 300VAC	1	
3e	8072865	Block Support, Fuse (22kW)	1	
4	8160217	Insulation, Terminal Block Paper	1	
5	8101164	Block, One-Piece Screwless Terminal	1	
6	8071973	Terminal, Post	1	
7	8067198SP	C1 Wiring Assembly, Dual-vat Applications	1	
7a	8067199SP	C1 Wiring Assembly, Full-vat Applications	1	
8	8072464	Power Block, Delta	1	
8a	8072465	Power Block- 3-Phase (Wye)	1	
9	8101202	Contactor, 24V 40 Amp Mechanical	1	
10	8067191SP	C2 Wiring Assembly Dual- and Full-vat	1	
11	8071071	Contactor, Mercury 24 VAC 30 Amp	1	
11a	8070884	Contactor, Mercury- 240VAC 50-Amp	1	
12	8067183SP	Wire Assembly, HV Left DV Contactor	1	
12a	8067186SP	Wire Assembly, HV Left FV Contactor	1	
12b	8072136	Connector, 6-Pin Female	1	
12c	8072135	Connector, Element- Male (High Amp), 6-Pin	1	
13	8067185SP	Wire Assembly, HV Right Contactor	1	[1]
13a	8072138	Connector, 9-Pin Female	1	
13b	8072137	Connector, Element- Male, 9-Pin	1	
14	8070070	Terminal, Ground Lug	1	
15	9005447	Back Cover, Contactor Box	1	
16	9005782	Bracket, Connector Common Electric Box	1	
17	9005444	Box, Contactor Common Electric	1	
18	8067185SP	Wire Assembly, HV Right Contactor	1	
18a	8067184SP	Wire Assembly, HV Right FV H22 Contactor	1	
19	8067186SP	Wire Assembly, HV Left FV Contactor	1	
19a	8067188SP	Wire Assembly, HV Left FV H22 Contactor	1	
19b	8067183SP	Wire Assembly, HV Left DV Contactor	1	
20	8067191	C2 Wire Assembly, Common Electric	1	
21	8067198	C1 Wire Assembly, Dual-vat Common Electric	1	
21a	8067199SP	C1 Wiring Assembly, Full-vat Applications	1	
22	8068589	Front Assembly, Fuse Contactor Box Common Electric	1	
23	8068673	Heat Sink Assembly, Full-vat Solid State Relay	1	
23a	8068674	Heat Sink Assembly, Dual-vat Solid State Relay	1	
23b	8261562	Relay with Heat Sink - 280V/40A	1	
24	8060070	Terminal, Ground Lug	1	
25	8070501	Fuseholder block	1	
26	8070922	Holder, Bus Fuse	1	
27	8072240	Fuse, 60 AMP 300VAC	1	

Contactors Box Components - Mercury Contactor and Solid State Relays (Triac)

H14/H17/H22 Series Electric Fryers

Contactors Box Components - Mercury Contactor and Solid State Relays (Triac)

#	PART #	DESCRIPTION	QTY	Note
28	8072278	Fuse, 20 Amp	1	
29	8072464	Power Block, Delta	1	
29a	8072465	Power Block- 3-Phase (Wye)	1	
29b	8069124	Filter Assembly	1	[2]
30	8100743	Plug, 0.75-inch Hole	1	
31	8101164	Block, One-Piece Screwless Terminal	1	
31a	8070064	Transformer, 480V/120V 150 VA	1	
31b	8070331	Transformer-250VA, 480V Applications, w/Basket Lift	1	
32	8101202	Contactor, 24V 40 Amp Mechanical	1	
33	8160217	Insulation, Terminal Block Paper	1	
34	9002519	Hinge, Control Box Common Electric	1	
35	9002752	Plate, Cordset	1	
36	9005782	Bracket, Connector Common Electric Box	1	
37	9005784	Box, Contactor Common Electric	1	
38	9005785	Rear, Triac Contactor Box Common Electric	1	
39	9005786	Rail, 2-Contactor Common Electric	1	
40	9005797	Support, Fuse Block Common Electric	1	
41	9005895	Top, Triac Contactor Box Common Electric	1	
42	9008239	Rear, Split Triac Contactor Box	1	
43	8065072	Triac Board Assembly	1	[3]
43a	8121283	Heat Sink, Triac Board	1	
44	8071276	Triac 600/40A TO-218	1	
44a	8150554	Heat Sink Compound	1	[4]
45	8071337	Standoff, Triac Board	1	

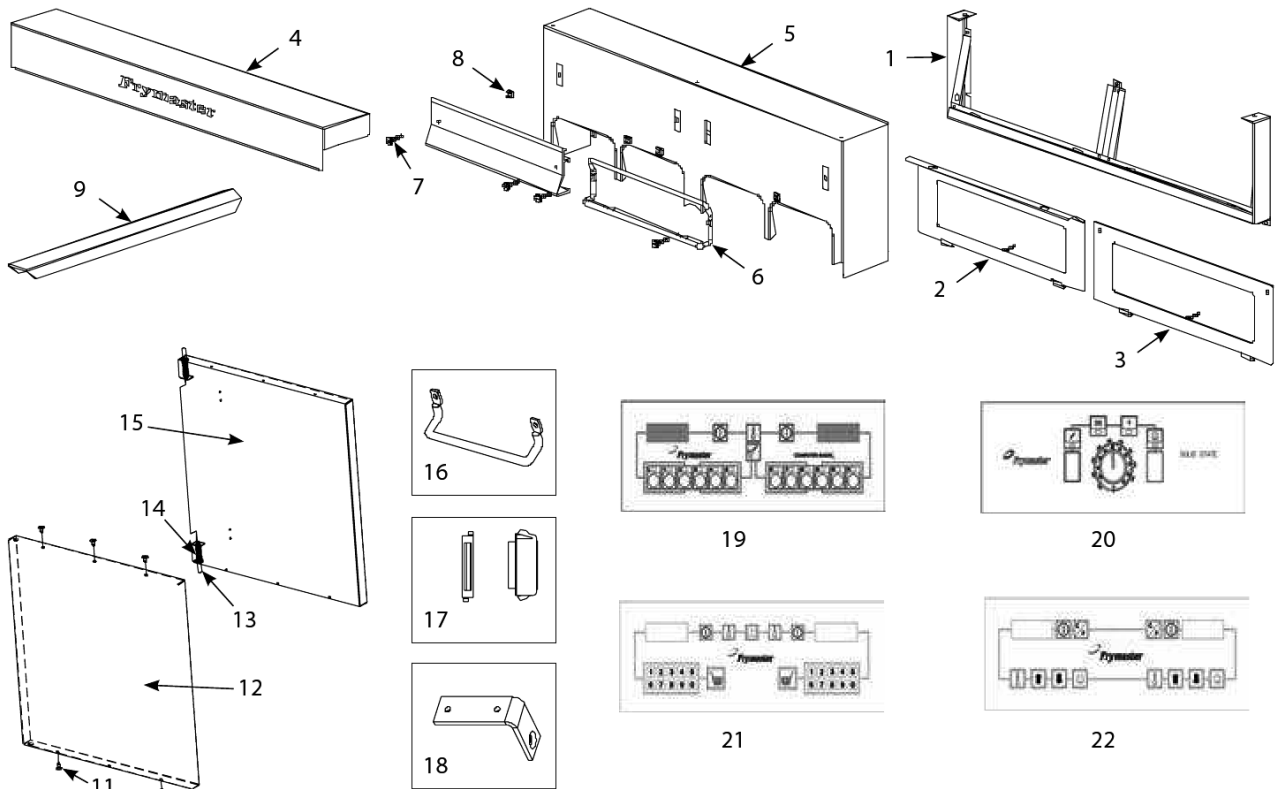
PART NOTES:

- [1] - Full- and Dual-vat
- [2] - WYE Solid-State/Triac Contactor Box Only
- [3] - 2 required for Dual-vat Applications
- [4] - required for installing Triac Board to Heat Sink

Contactors Box Components - Mercury Contactor and Solid State Relays (Triac)

H14/H17/H22 Series Electric Fryers

Control Panel Assemblies, Doors, and Related Components



Control Panel Assemblies, Doors, and Related Components

H14/H17/H22 Series Electric Fryers

Control Panel Assemblies, Doors, and Related Components

#	PART #	DESCRIPTION	QTY	Note
1	8067171SP	Control Panel Assembly, Single Fryer	1	
1a	8067172SP	Frame, Control Panel, Two Station Fryer	1	
1b	8067173SP	Frame, Control Panel, Three Station Fryer	1	
1c	8067174SP	Frame, Control Panel, Four Station Fryer	1	
1d	1062171SP	Frame, Control Panel, Five Station Fryer	1	
1e	1062324SP	Control Panel Assembly, Applebee's Fryer with Dump Station on Left	1	
1f	1062325SP	Control Panel Assembly, Applebee's Fryer with Dump Station on Right	1	
2	8232307	Control Panel Bezel, with Slot	1	
3	8230768	Control Panel Bezel, without Slots	1	[1]
4	1063034SP	Topcap, Single Non-Filter	1	
4a	8240409	Topcap, Single FootPrint	1	
4b	1063033SP	Topcap, Double	1	
4c	1063035SP	Topcap, Triple	1	
4d	1063036SP	Top Cap, Four Station	1	
4e	8241037	Topcap, 5-Battery	1	
4f	8241047	Topcap, Applebee's Fryer with Dump Station on Left	1	
4g	8241048	Topcap, Applebee's Fryer with Dump Station on Right	1	
5	8240791	Tilt Housing, Single	1	
5a	8240789	Tilt Housing, Double	1	
5b	8240798	Tilt Housing, Triple	1	
5c	8240799	Tilt Housing, Quad	1	
5d	8240852	Tilt Housing, 5-Battery	1	
6	8101403	Hanger, Wireform Basket	1	
7	8090171	Thumbscrew, 0.25-20 x 1.375-inch	1	
8	8261351	Nut Retainer, 0.25-20 Std. Fluecap	10	[2]
9	8235810	Connecting Strip, Frypot	1	
10	1064397	Door - Left/Right	1	
11	8090266	Screw, 10 x 0.5-inch Phillips Head ZP	1	
12	8240137SP	Panel, Door	1	
13	1064067SP	Door Pin Assembly	1	
13a	8090193	Flat Washer - 0.25" Nylon	1	
14	8261343	Spring - Door Pin Hinge	10	
15	9002485	Liner, Door, BIH52/MH52 Universal Door	1	
16	8101422	Handle, Wireform Door	1	
17	8101105	Door Magnet - Vertical	1	
18	8101508	Hinge, Universal Door	1	
19	1061193	Computer Magic III, Full-vat (CE)	1	
19a	1061194	Computer Magic III, Dual-vat (CE)	1	
19b	8067158	Computer Magic III, Full-vat (Domestic)	1	
19c	8067159	Computer Magic III, Dual-vat (Domestic)	1	
19d	8067162	Computer Magic III, Full-vat (Triac/Solid-State)	1	
19e	8067163	Computer Magic III, Dual-vat (Triac/Solid-State)	1	
20	8067422	Analog Controller, Full-vat	1	
20a	8067423	Analog Controller, Dual-vat	1	
21	1062090SP	Basket Lift Timer, Full-vat (CE)	1	

Control Panel Assemblies, Doors, and Related Components

H14/H17/H22 Series Electric Fryers

Control Panel Assemblies, Doors, and Related Components

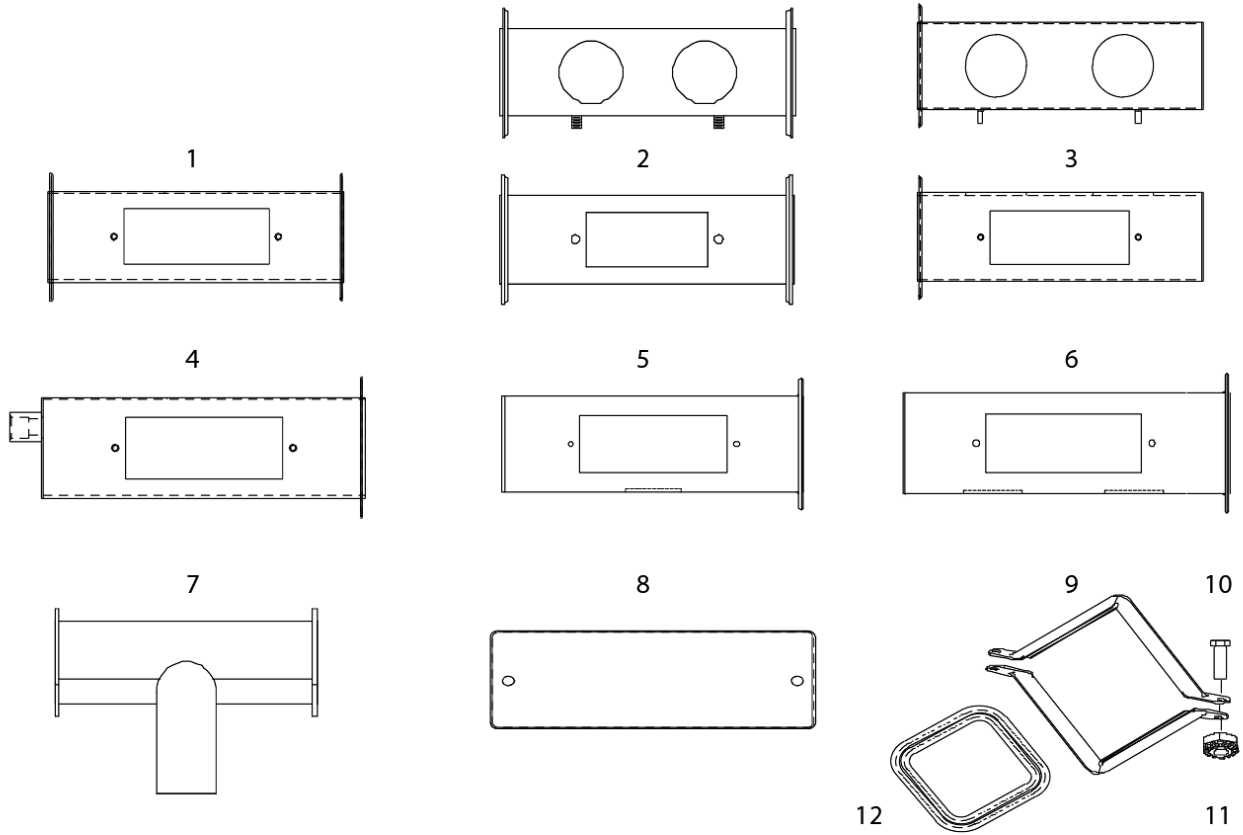
#	PART #	DESCRIPTION	QTY	Note
21a	1062091SP	Basket Lift Timer, Dual-vat (CE)	1	
21b	1062088SP	Basket Lift Timer, Full-vat (Domestic)	1	
21c	1062076SP	Basket Lift Timer, Dual-vat (Domestic)	1	
22	8262305	Digital Controller, Full-vat (CE)	1	
22a	8262306	Digital Controller, Dual-vat (CE)	1	
22b	8262303	Digital Controller, Full-vat (Domestic)	1	
22c	1061952	Digital Controller, Dual-vat (Domestic)	1	

PART NOTES:

- [1] - for Digital and Analog Controllers
- [2] - for use on standard fluecap

H14/H17/H22 Series Electric Fryers

Drain System Components



H14/H17/H22 Series Electric Fryers

Drain System Components

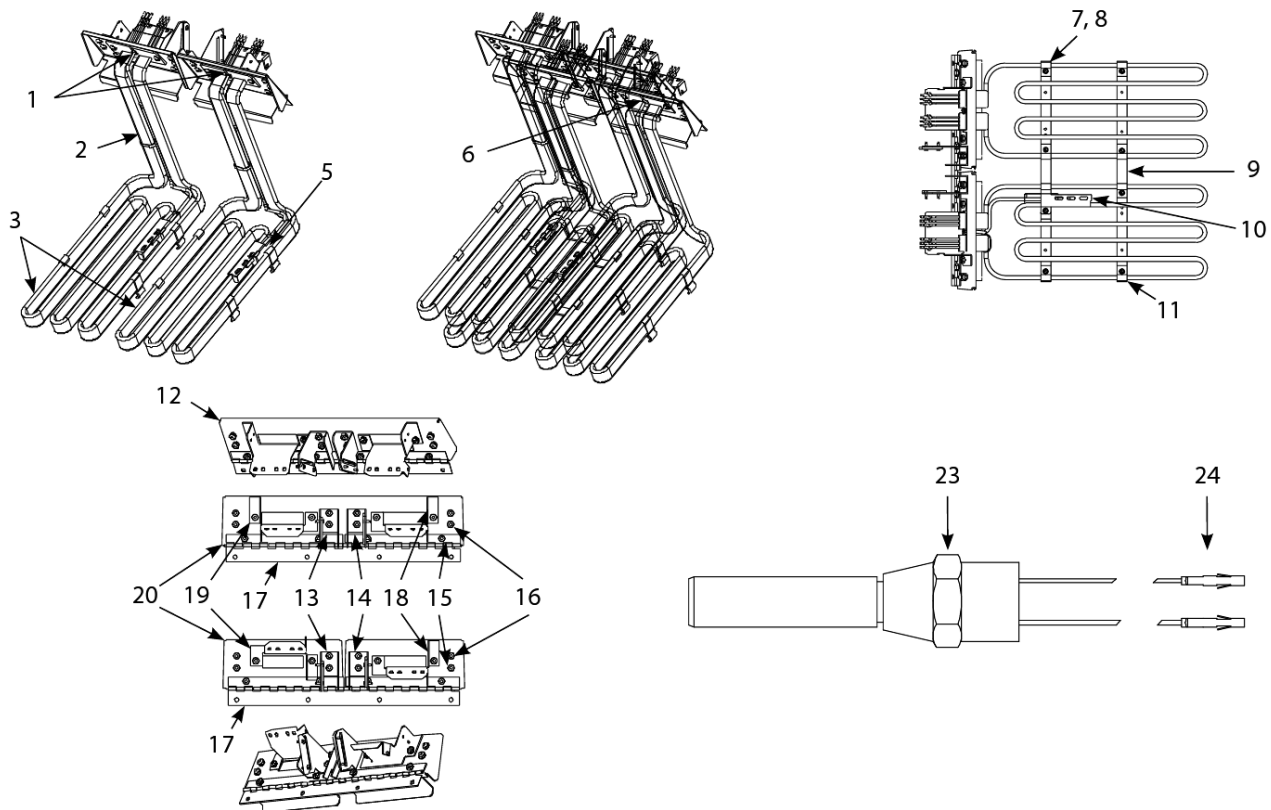
#	PART #	DESCRIPTION	QTY	Note
1	8230718	Drain Tube, Left End, 2.5 x 8.0-inch	1	
2	8230725	Drain Tube, Left End, Dual-vat, 2.5 x 8.0-inch	1	
3	8231551	Drain Tube, Right End, Dual-vat	1	
4	8232636	Drain Tube, Left End, Dual-vat	1	
4a	8232637	Drain Tube, Left End, Full-vat	1	
5	8231549	Drain Tube, Right End Short	1	
6	8231543	Drain Tube, Right End, Dual-vat	1	
6a	8231508	Drain Tube, Right End Long	1	
6b	8230724	Drain Tube, Dual-vat FM 15.5-inch	1	
6c	8230717	Drain Tube, Open End Long	1	
6d	8230720	Elbow, Drain-EF Right FM	1	
6e	8230721	Elbow, Drain-EF Left FM	1	
7	8232336	Drain, FootPrint	1	
8	8261348	Cover, Drain Cleanout	5	
8a	8160021	Gasket, Drain Cleanout	1	
8b	8261382	Wingnut	10	
8c	8160092	Grommet, 1-inch Drain	1	
8d	8261345	Washer, 1-inch Drain	25	
8e	8090347	Nut, 1-inch NPT Retainer	1	
9	8100396	Clamp, Square Drain	1	[1]
10	8261375	Screw - #10-32 x 0.75" - Hex Trim Head SS	5	
11	8261376	Nut - #10-32 Keps Hex	10	
12	8160032	Gasket, Square Drain	1	

PART NOTES:

[1] - Two Required Per Union

H14/H17/H22 Series Electric Fryers

Elements, High-Limit Thermostat and Related Components



Elements, High-Limit Thermostat and Related Components

H14/H17/H22 Series Electric Fryers

Elements, High-Limit Thermostat and Related Components

#	PART #	DESCRIPTION	QTY	Note
1	8261339	Bushing, .375-inch Split	10	
2	8090567	Tie-Wrap - Metal	1	
3	8072639	Heating Element, 208V 7 kW	1	
3a	8072640	Heating Element, 208V 8.5 kW	1	
3b	8072641	Heating Element, 220V 8.5 kW	1	
3c	8072642	Heating Element, 230V 7 kW	1	
3d	8072643	Heating Element, 230V 8.5 kW	1	
3e	8072644	Heating Element, 240V 7 kW	1	
3f	8072645	Heating Element, 240V 8.5 kW/ 220V 7 kW	1	
3g	8072646	Heating Element, 200V 8.5 kW	1	
3h	8072647	Heating Element, 380V 7 kW	1	
3i	8072648	Heating Element, 380V 8.5 kW	1	
3j	8072649	Element - 440V - 17.0 kW	1	
3k	8072650	Element, 440V 18.5 kW	1	
3l	8072651	Element - 480V - 17.0 kW	1	
3m	8072652	Element, 480V 18.5 kW	1	
3n	8072653	Heating Element, 400V 8.5 kW	1	
3o	8073171	Heating Element, 220V 11 kW	1	
3p	8073172	Heating Element, 230V 11 kW	1	
3q	8073173	Heating Element, 240V 11 kW	1	
3r	8073174	Heating Element, 200V 11 kW	1	
3s	8073175	Heating Element, 380V 11 kW	1	
3t	8073176	Element - 440V - 11.0 kW	1	
3u	8073177	Element - 480V - 11.0 kW	1	
3v	8073178	Heating Element, 400V 11 kW	1	
3w	8073237	Heating Element, 208V 11 kW	1	
4	8063141SP	Heating Element Assemblies, 208V, 14kW Full-vat	1	
4a	8063142SP	Heating Element Assemblies, 240V 7kW Dual-vat	1	
4b	8068474SP	Heating Element Assemblies, 240V 14 kW Full-vat	1	
4c	8067887SP	Heating Element Assemblies, 230V H22, Dual-vat	1	
4d	8068497SP	Heating Element Assemblies, 440V H14/17, Full-vat	1	
4e	8068677SP	In-N-Out 208V 22kW	1	
5	8072478	Temperature Probe	1	
6	8160480	Plug, .375-inch Dome	1	
7	8090518	Screw, 8-32 x 0.375-inch Hex Washer Slotted Head SS	1	
8	9102042	Clamp, Element	1	[1]
9	9103681	Support, Full-Vat Element Rear	1	
9a	9105214	Element Support, Dual-vat	1	
10	9105022	Bracket, Temperature Probe	1	
11	9105213	Clamp, Element and Probe	1	[2]
12	1060003SP	Tilt Plate Assembly, Full-vat	1	
12a	1060004SP	Tilt Plate Assembly	1	
13	1060573SP	Tilt Plate Assembly, Bracket, Right Spring Slot	1	
14	1060572SP	Tilt Plate Assembly, Bracket, Left Spring Slot	1	
14a	8100297	Spring, Element	1	
14b	8101546	Spring, Element	1	[3]

Elements, High-Limit Thermostat and Related Components

H14/H17/H22 Series Electric Fryers

Elements, High-Limit Thermostat and Related Components

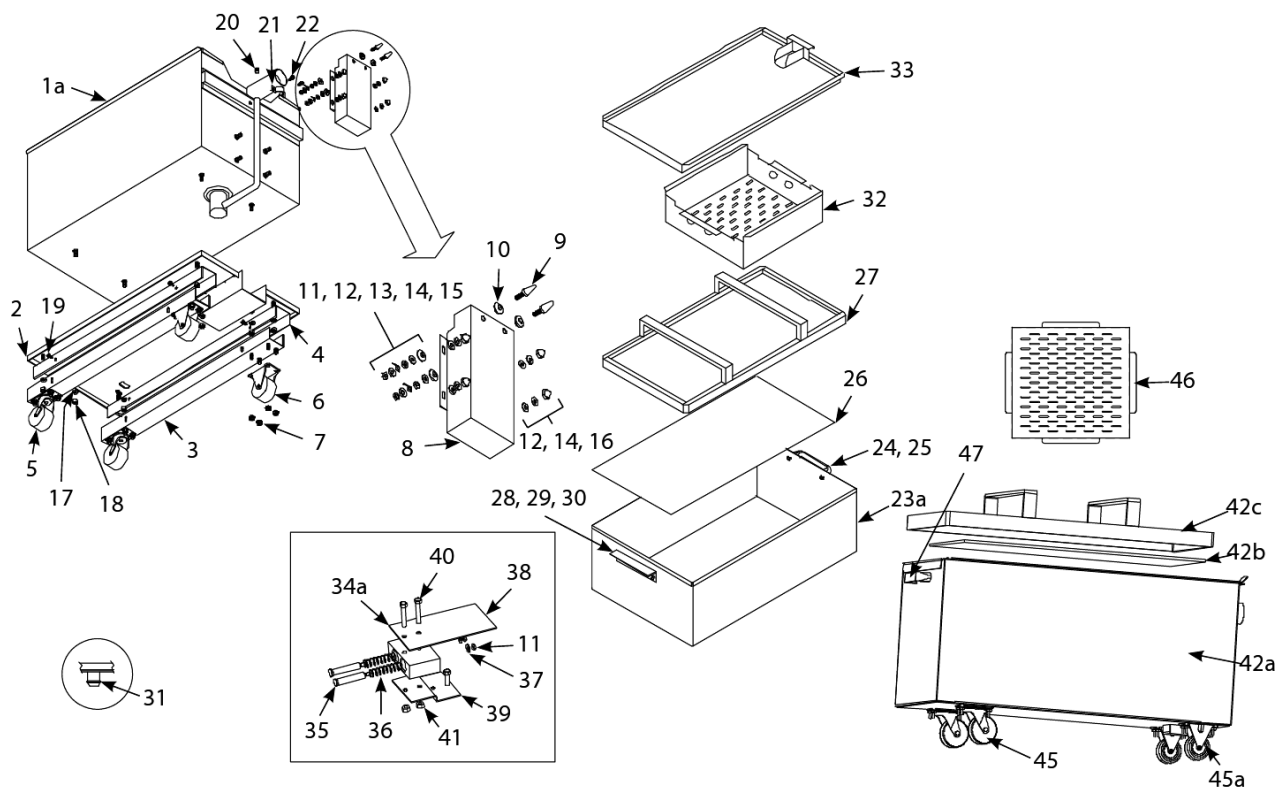
#	PART #	DESCRIPTION	QTY	Note
15	8261330	Screw, 10-32 x 0.375-inch Slot Head SS	25	
16	8261376	Nut - #10-32 Keps Hex	10	
17	8100035	Hinge	1	
18	1060572SP	Tilt Plate Assembly, Bracket, Left Spring Slot	1	
19	1060573SP	Tilt Plate Assembly, Bracket, Right Spring Slot	1	
20	9109641	Tilt Plate	1	
21	9109641	Tilt Plate	1	
22	8262741-AS	Switch, Tilt Safety	1	
22a	8262228	Tilt Switch, CE	1	[4]
23	8261177	Thermostat, High-Limit 425°F/218°C	1	
23a	8068035SP	High-limit Thermostat	1	
23b	8068132	High-Limit Thermostat, CE other than 22kW	1	[5]
23c	8068536	High-Limit Thermostat, CE 22kW	1	
24	8261332	Terminal, Female Disconnect Pin	25	

PART NOTES:

- [1] - Short
- [2] - Long
- [3] - 22kW only
- [4] - Full-Vat requires one switch and Dual-Vat requires two
- [5] - Color-Coded Yellow

H14/H17/H22 Series Electric Fryers

Filter Base Pan Assemblies - Filter Magic II (Before 2_99), Filter Magic II



Filter Base Pan Assemblies - Filter Magic II (Before 2_99), Filter Magic II

FRY_P_0015_12_14_Filter Base Pan Assemblies - Filter Magic II (Before 2_99), Filter Magic II.pdf



H14/H17/H22 Series Electric Fryers

Filter Base Pan Assemblies - Filter Magic II (Before 2_99), Filter Magic II

#	PART #	DESCRIPTION	QTY	Note
1	8067411SP	Outer Pan Assembly	1	[1]
1a	8231360SP	Outer Pan Assembly	1	
2	8232332	Base, Filter Pan Assembly	1	
3	8069471	Channel, Caster Mounting	1	
4	9002805	Channel, Caster Lift Base	1	
5	8102805	Caster - 2"	1	
6	8100005	Caster, Rigid	1	
7	8261376	Nut - #10-32 Keps Hex	10	
8	8240291	Cover, Suction Tube	1	
9	8100695	Contact, Pan	1	
10	8071270	Washer, Insulated Shoulder	1	
11	8090053	Nut, 10-32 Hex	1	
12	8090184	Washer, #10 LK ZP	1	
13	8261337	Tab, 0.25-inch Terminal	5	
14	8090185	Washer, Flat #10	1	
15	8090193	Flat Washer - 0.25" Nylon	1	
16	8090020	Nut Cap 10-24 NP	1	
17	8090189	Washer - 0.25" Flat SS	1	
18	8261362	Nut - 0.25"-20 Hex	10	
19	8261374	Screw - #10 x 0.5" Hex Head	25	
20	8130568	Plug, 0.125" SS NPT, Sq-Head	1	
20a	8064373	Heater Strip Assembly	1	
20b	8110861	Foam Insulation – by the foot	1	
20c	8110746-FRY	Aluminum Tape – 50 yard roll	1	
20d	8100441	Clamp, Heater	1	[2]
21	9101350	Clamp - Suction Tube	1	
22	8261371	Screw - #8 x 0.5" Hex Head ZP	25	
23	8065282SP	Inner Pan Assembly	1	[3]
23a	8231731SP	Inner Pan Assembly	1	
23	8064527SP	Power Shower Assembly, Dual Vat, Complete	1	
24	8100180	Handle	1	
25	8261360	Screw - #10-24 x 0.3125" Round Slot Head ZP	1	
26	8103537	Screen, Sana Grid	1	
27	8101406	Hold Down Ring Assembly	1	
28	9101366	Handle - Filter Pan	1	
29	8261330	Screw, 10-32 x 0.375-inch Slot Head SS	1	
30	8090045	Nut, 10-32	1	
31	8160117PK	O-Ring - 0.609 OD - QTY 10	1	
32	8240416	Crumb Screen	1	
33	8231390	Cover, Filter Pan	1	
34	8064694SP	Contact Block Assembly	1	
34a	8100694	Block, Contact	1	
35	8100693	Pin, Contact	1	
36	8100696	Spring, Contact Pin	1	
37	8090185	Washer, Flat #10	1	
38	8160126	Insulator, Contact Block	1	

Filter Base Pan Assemblies - Filter Magic II (Before 2_99), Filter Magic II

H14/H17/H22 Series Electric Fryers

Filter Base Pan Assemblies - Filter Magic II (Before 2_99), Filter Magic II

#	PART #	DESCRIPTION	QTY	Note
39	9001521	Bracket, Contact Block	1	
40	8090291	Screw, 0.25-20 X 1.5-inch	1	
41	8261372	Nut Grip 0.25-inch 0.25-20 Hex NP	10	
42	1060361SP	Complete Pan Assemblies, After July 2000	1	
42a	8232828SP	Pan, Filter, Used with Filter Pan Assembly	1	
42b	8103538	SanaGrid Filter Screen	1	
42c	8232899	Hold Down Ring	1	
43	8069449SP	Complete Pan Assemblies, Between March 1999 and July 2000	1	
43a	8232751SP	One-Piece Pan Only	1	
43b	8103537	Screen, Sana Grid	1	
43c	8101406	Hold Down Ring Assembly	1	
44	1060090SP	Complete Pan Assemblies, Carl's Jr. w/Magnasol Filter	1	
44a	8232951SP	Pan, Filter, Used with Filter Pan Assembly	1	
45	8102805	Caster - 2"	1	
45a	8102807	Caster - 2" Rigid	1	
46	8240416	Crumb Screen	1	
47	8100180	Handle	1	
47a	8261360	Screw - #10-24 x 0.3125" Round Slot Head ZP	1	

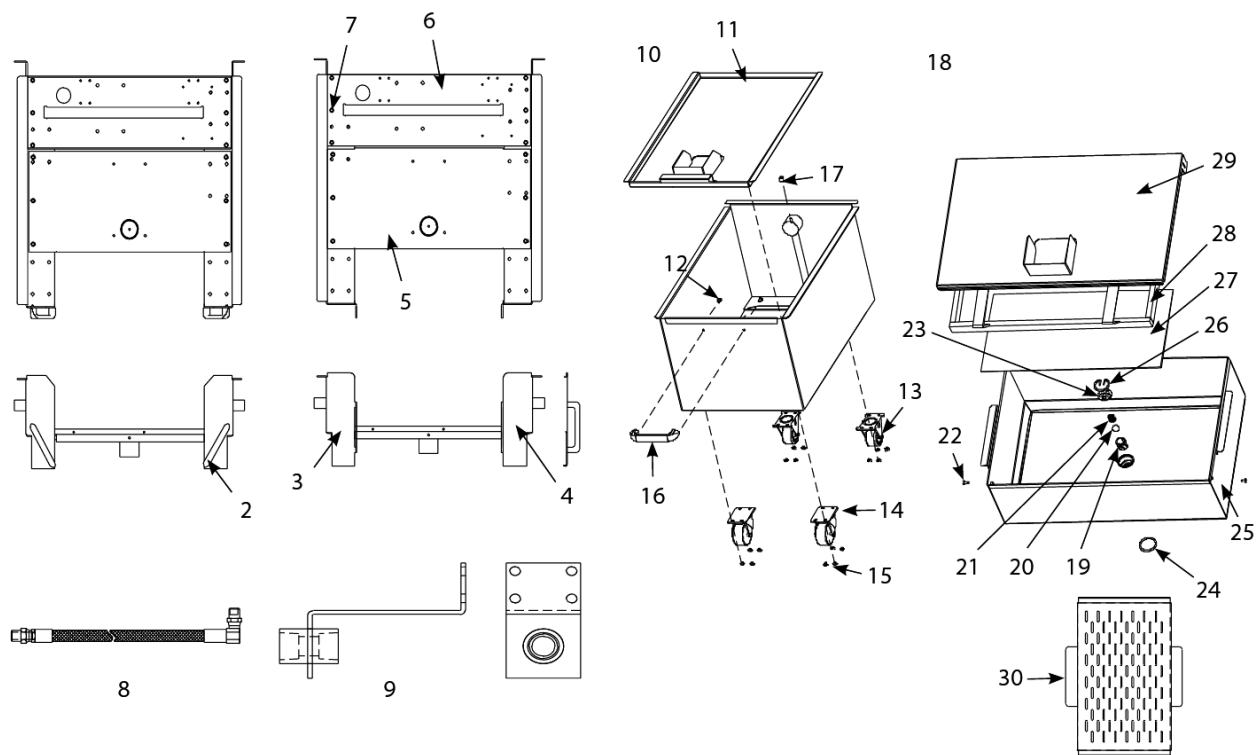
PART NOTES:

- [1] - Includes Items 1a-22
- [2] - Aluminum
- [3] - Includes Items 23a-31

Filter Base Pan Assemblies - Filter Magic II (Before 2_99), Filter Magic II

H14/H17/H22 Series Electric Fryers

Filter Base Pan Assemblies - FootPrint III, Single FootPrint



Filter Base Pan Assemblies - FootPrint III, Single FootPrint

H14/H17/H22 Series Electric Fryers

Filter Base Pan Assemblies - FootPrint III, Single FootPrint

#	PART #	DESCRIPTION	QTY	Note
1	8068648SP	Base Assembly	1	[1]
1a	8065985SP	Filter Base Assembly, FootPrint III w/Casters	1	[2]
2	8100180	Handle	1	
2a	8261360	Screw - #10-24 x 0.3125" Round Slot Head ZP	25	
3	8069153	Side, Left Filter Base	1	[3]
4	9028542	Filter Base, Right Side	1	[3]
5	8232289	Support, Filter Pan	1	
6	9005396	Support, Filter Motor	1	
7	8261374	Screw - #10 x 0.5" Hex Head	25	
7a	9005477	Cover, Motor (September 1999 and later)	1	[4]
7b	8240558	Cover, Motor (Prior to September 1999)	1	[5]
7c	9001949	Standoff, Filter Wiring Box	1	
8	8101423	Hose, Oil Return	1	
9	8232638	Bracket, Oil Return Hose	1	
10	8069546SP	Assembly, Filter Pan FPH117	1	
10a	8232828	Pan, Filter	1	
11	8069547SP	Cover Assembly, Filter Pan	1	
11a	8090045	Nut, 10-32	1	
11b	8261330	Screw, 10-32 x 0.375-inch Slot Head SS	1	
11c	8090185	Washer, Flat #10	1	
11d	9101816	Handle - Filter Pan	1	
12	8261360	Screw - #10-24 x 0.3125" Round Slot Head ZP	25	
13	8102807	Caster - 2" Rigid	1	
14	8102805	Caster - 2"	1	
15	8261376	Nut - #10-32 Keps Hex	10	
16	8100180	Handle	1	
17	8130568	Plug, 0.125" SS NPT, Sq-Head	1	
18	8065618SP	Pan Assembly, Filter	1	
19	8101388	Check Valve Tube	1	
20	8100948	Ball, Check Valve	1	
21	8100946	Spring, Check Valve	1	
22	8090422	Screw, 10-32 x 0.4375-inch Slotted Truss Head	1	
23	9005448	Strainer, Check Valve	1	
24	8160597PK	O-Ring, Check Valve - QTY 6	1	
25	8231979SP	Pan, Filter	1	
26	8101387	Check Valve Retainer	1	
27	8103559	Screen, Sana Grid (12 x 19.5-inch/30.5 x 49.5cm, has no holes)	1	
28	8101405	Ring, Hold Down	1	
29	8232027	Cover, Filter Pan	1	
30	8237846	Screen, Crumb	1	
30a	8261490	Kit, Filter Pan Check Valve Service	1	[6]

PART NOTES:

- [1] - After 8/97
- [2] - Before 8/97
- [3] - with handle

Filter Base Pan Assemblies - FootPrint III, Single FootPrint

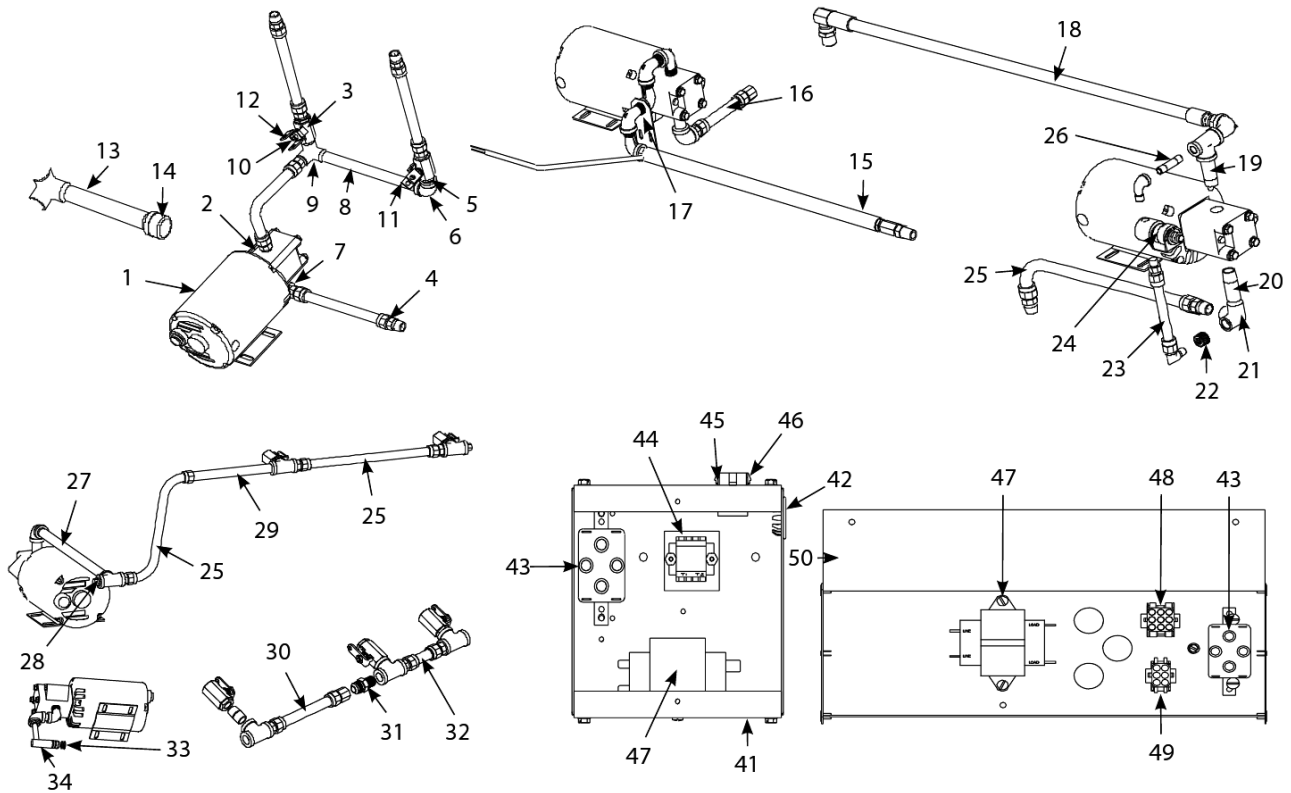
H14/H17/H22 Series Electric Fryers

Filter Base Pan Assemblies - FootPrint III, Single FootPrint

#	PART #	DESCRIPTION	QTY	Note
[4]	-	August 1997 and later		
[5]	-	Prior to August 1997		
[6]	-	Items 19, 20, 21, 23, 24, and 26		

H14/H17/H22 Series Electric Fryers

Filter Pump, Motor Assemblies, Filter Pump Boxes and Components



Filter Pump, Motor Assemblies, Filter Pump Boxes and Components

H14/H17/H22 Series Electric Fryers

Filter Pump, Motor Assemblies, Filter Pump Boxes and Components

#	PART #	DESCRIPTION	QTY	Note
1	8261270	Motor and Gasket Kit - 220-240V/50-60 Hz	1	
1a	8261756	Motor and Gasket Kit - 208V/50-60 Hz	1	
1b	8261712	Motor and Gasket Kit - 115V/50-60 Hz	1	
2	8261264	Pump Kit - 4 GPM	1	
2b	8090514	Cap Screw - 0.3125" 18 NC Hex	1	
2c	8090194	Flat Washer - 0.3125" ZP	1	
2d	8160093	Gasket - Pump/Motor	1	
3	8100278	Valve, 0.5" Ball	1	
4	8101067	Flexline - Oil Return - 0.625" OD x 8.5" L	1	
5	8130022	Nipple, 0.5" Close NPT BM	1	
6	8130062	Elbow - 0.5" BM x 90°	1	
7	8130165	Elbow - 0.5" x 90° NPT Street	1	
8	8130253-FRY	Nipple, 0.5-inch NPT x 10-inch	1	[1]
9	8130331	Elbow, V-Side Outlet 0.5" NPT	1	
10	9002935	Retainer, Nut Oil Return Valve	1	
11	9012772	Handle, Valve Rear Flush LT	1	
12	9022772	Handle, Valve Rear Flush RT	1	
13	8130098	Nipple, 0.5-inch x 6.5-inch	1	
14	8130469	Cap, 0.5-inch NPT Pipe	1	
15	8100945	Hose, Heated Oil Return, 120/240V	1	
16	8101159	Flexline - Oil Return - 5" L	1	
17	9001958	Support, Oil Return	1	
18	8101404	Flexline - Oil Return (pump to rear manifold)	1	[2]
19	8130265	Nipple - 0.5" x 2.5" NP	1	
20	8130460	Nipple, 0.5-inch X 3.0-inch NPT	1	
21	8130331	Elbow, V-Side Outlet 0.5" NPT	1	
22	8130304	Bushing, 0.5-inch NPT to 0.25-inch NPT Flush Reducing	1	
23	8101373	Flexline - Pump Bypass	1	
24	8072484	Solenoid Valve - 0.25"	1	
25	8101057	Flexline - Oil Return - 13" L	1	
26	8130537	Nipple - 0.25" x 2"	1	
27	8130368	Nipple, 0.5-inch x 16-inch	1	
28	8130463-FRY	Plug - 0.5" NPT	1	
29	8130275	Nipple, 0.5-inch x 9-inch	1	
30	8261890	Flexline - Oil Return - 7" L	1	
31	8101668	Male Adaptor - 0.625" OD x 0.5"	1	
32	8101160	Flexline - Oil Return - 3" L	1	
33	8261392	O-Ring	5	
34	8231356	Disconnect Fitting Male	1	
35	8160102	Grommet, Oil Diverter	1	
36	9001472	Diverter, Oil	1	
37	9101627	Support Bracket - Male Disconnect	1	
38	8261668	Kit, 100V-120V Heater Tape Replacement	1	
38a	8261669	Kit, 108V-250V Heater Tape Replacement	1	
39	8110746-FRY	Aluminum Tape – 50 yard roll	1	
39a	8110861	Foam Insulation – by the foot	1	

Filter Pump, Motor Assemblies, Filter Pump Boxes and Components

H14/H17/H22 Series Electric Fryers

Filter Pump, Motor Assemblies, Filter Pump Boxes and Components

#	PART #	DESCRIPTION	QTY	Note
40	8110208	Spaghetti Insulation	1	
41	9005250	Box, Filter	1	
42	8100044	Plug, .875 Button	1	
43	8072434	Relay, Shunt 24V Coil Amp	1	
43a	8070012	Filter Relay - 18A 24VAC	1	
44	8101164	Block, One-Piece Screwless Terminal	1	
44a	8101168	Terminal, Block Screwless End	1	[3]
44b	8070276	Block, UL Male 12 Pin Terminal	1	
44c	8160217	Insulation, Terminal Block Paper	1	
45	8067494SP	Plug Assembly - 120V Lower 9-Pin	1	
46	8068021SP	Plug Assembly - 120V Upper 9-Pin	1	
47	8070800	Transformer, 100-120V/24V 50VA Filter and MIB	1	
47a	8070680	Transformer, 208V, 50/60Hz -24V 20VA	1	
47b	8074978	Transformer - Dual Voltage 100-120V/12V 30VA /24V 50VA	1	
47c	8074978	Transformer - Dual Voltage 100-120V/12V 30VA /24V 50VA	1	
47d	8075129	Transformer - Dual Voltage 208-240V	1	
48	8066203	Wiring Assembly, Filter Magic, 9-Pin	1	
49	8066204	Wiring Assembly, 6-Pin	1	
50	9002250	Box, Control, Filter Magic	1	
50a	9002251	Box, Control, Filter Magic, Under Cabinet	1	
50b	2000410	Box, Control, Filter Magic Common Electric	1	
50c	2000409	Box, Control, Filter Magic, Common Electric, Under Cabinet	1	
51	8069245SP	Heater Tape 120V 25w 36" (Assy.)	1	
51a	8065932	Heater Strip - 240V/45W - 36" L	1	
51b	8065933SP	Heater Strip Assembly, 120V 18" 25W	1	
51c	8071098	Heater Strip Assembly, 240V, 25W 18"	1	
51d	8066730SP	Heater Tape Assemblies, FootPrint 56-inch, 100V 40W	1	
51e	8066731SP	Heater Tape Assemblies, FootPrint 56-inch, 120V 40W	1	
51f	8071473	Heater Strip Assembly, 240V, 70W 56"	1	
51g	8066733SP	Heater Tape Assemblies, FootPrint 56-inch, 250V 70W	1	
52	8072862	Harness and Wire Assemblies, FootPrint III Filter Cable	1	[4]
52a	WIR0146SP	Harness and Wire Assemblies, 230V/50Hz Filter Box	1	
52b	WIR0010SP	Harness and Wire Assemblies, 120V Standard Filter Control	1	
52c	WIR0250SP	Harness and Wire Assemblies, Filter Control Box	1	
52d	WIR0394SP	Harness and Wire Assemblies, CE Filter Box	1	

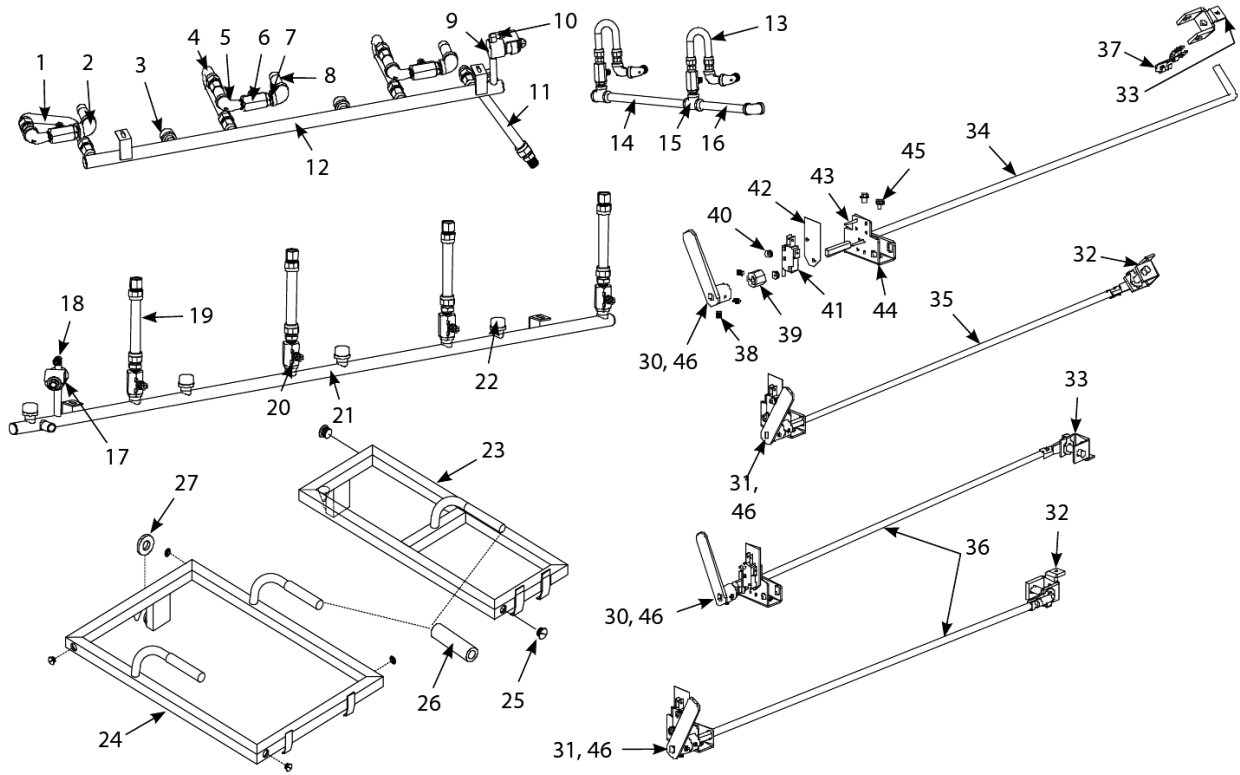
PART NOTES:

- [1] - Dual-vat Configuration
- [2] - pump to rear manifold
- [3] - 230V, 50 Hz Filter Magic
- [4] - 2-pin, 9-pin, and 15-pin connectors

Filter Pump, Motor Assemblies, Filter Pump Boxes and Components

H14/H17/H22 Series Electric Fryers

Filtration System Components



H14/H17/H22 Series Electric Fryers

Filtration System Components

#	PART #	DESCRIPTION	QTY	Note
1	1060002SP	Flex Line Assembly, With Male/Female Ends	1	
2	8130062	Elbow - 0.5" BM x 90°	1	
3	8130469	Cap, 0.5-inch NPT Pipe	1	
4	1060054SP	Flex Line Assembly, With Female Ends	1	
5	8130165	Elbow - 0.5" x 90° NPT Street	1	
6	8100278	Valve, 0.5" Ball	1	
7	8130022	Nipple, 0.5" Close NPT BM	1	
8	8130265	Nipple - 0.5" x 2.5" NP	1	
9	8072484	Solenoid Valve - 0.25"	1	
9a	8261720	Vent Tube, Teflon 0.375-inch O.D. X 2-foot	1	
10	8103904	Quick Connect - 0.25" x 90°	1	
11	8069439SP	Flex Line Assembly, 14-inch with Male/Female Ends	1	
12	8101517	Manifold, Oil Return, RF H314/17/22	1	
12a	8101516	Manifold, Oil Return, RF H214/17/22	1	
12b	8101518	Manifold, Oil Return, RF H414/17/22	1	
13	8101067	Flexline - Oil Return - 0.625" OD x 8.5" L	1	
14	8130509	Nipple, 0.5 x 14.5-inch NPT	1	
15	8130003-FRY	Tee - 0.5" NPT	1	
16	8130275	Nipple, 0.5-inch x 9-inch	1	
16a	8130093-FRY	Nipple - 0.5" NPT x 4"	1	[1]
17	8072484	Solenoid Valve - 0.25"	1	
18	8103904	Quick Connect - 0.25" x 90°	1	
18a	8261720	Vent Tube, Teflon 0.375-inch O.D. X 2-foot	1	
19	8069828	Flexline with Male/Female Ends	1	
20	8100278	Valve, 0.5" Ball	1	
21	8101507	Manifold, H414/17 PS Oil Return	1	
21a	8101505	Manifold, H214/17 PS Oil Return	1	
21b	8101506	Manifold, H314/17 PS Oil Return	1	
22	8130469	Cap, 0.5-inch NPT Pipe	1	
23	8064527SP	Power Shower Assembly, Dual Vat, Complete	1	
24	8064505SP	Power Shower Assembly, Full-Vat	1	
25	8090415	Screw, Power Shower Cleanout	1	
26	8140001	Grip, Power Shower Handle	1	
27	8160026	Seal (Gasket) (2 required)	1	
28	8069802SP	FootPrint III Dual Vat Left Oil Return Linkage Assembly	1	
28a	8069803SP	FootPrint III Dual Vat Right or Full Vat Oil Return Linkage Assembly	1	
29	8066875SP	Filter Magic Dual Vat Left Oil Return Linkage Assembly	1	
29a	8066874SP	Filter Magic Dual Vat Right or Full Vat Oil Return Linkage Assembly	1	
30	8232337	Handle, Oil Return, Left	1	
31	8232338	Handle, Oil Return, Right	1	
32	9012772	Handle, Valve Rear Flush LT	1	
33	9022772	Handle, Valve Rear Flush RT	1	
34	8101764	Rod, FootPrint III Oil Return, Right	1	
35	8101765	Rod, FootPrint III Oil Return, Left	1	
36	8101180	Shaft, Filter Magic Oil Return	1	

Filtration System Components

H14/H17/H22 Series Electric Fryers

Filtration System Components

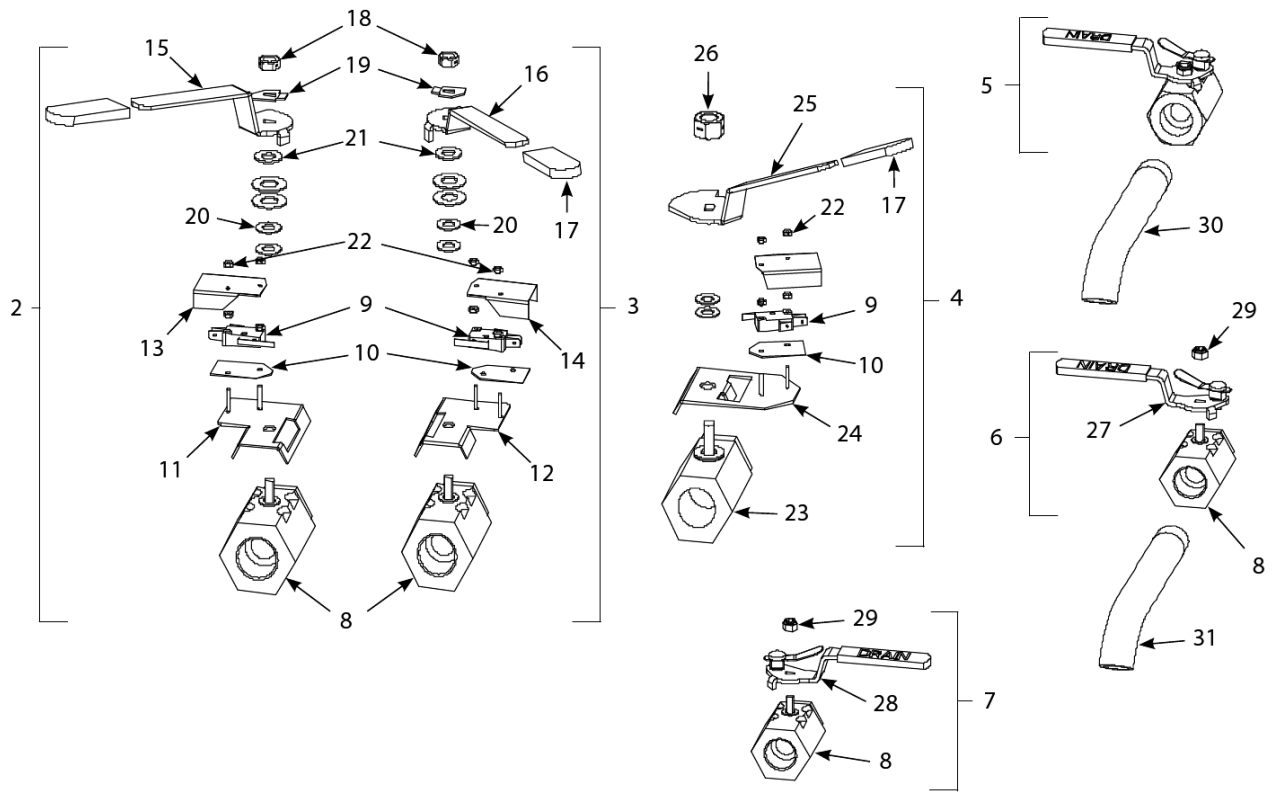
#	PART #	DESCRIPTION	QTY	Note
37	8090601	Clip, Clevis	1	
38	8261377	Setscrew, 10-32 x 0.25-inch	25	
39	8101186	Cam, Filter System Microswitch	1	
40	8261366	Nut - #4-40 Keps Hex	25	
41	8072103	Microswitch	1	
42	8160220	Insulation, Microswitch	1	
43	8261359	Screw - #4-40 x 0.75" Slotted Round Head	25	
44	9002571	Bracket, Microswitch	1	
45	8090359	Screw, 8 x 0.25-inch Hex Washer Head	1	
46	8160047	Sleeve, Red Plastic Valve Handle	1	

PART NOTES:

[1] - replaces Item 11 in some models

H14/H17/H22 Series Electric Fryers

Frypots and Drain Valve Assemblies



H14/H17/H22 Series Electric Fryers

Frypots and Drain Valve Assemblies

#	PART #	DESCRIPTION	QTY	Note
1	8232450SP	Frypot Assemblies, Full-Vat Non-Filter without Insulation	1	
1a	8232451SP	Frypot Assemblies, Full-Vat Filter without Insulation	1	
1b	8232458SP	Frypot Assemblies, Dual-Vat Non-Filter without Insulation	1	
1c	8232459SP	Frypot Assemblies, Dual-Vat Filter without Insulation	1	
1d	8230815SP	Frypot Assemblies, Dual-Vat Filter without Insulation	1	[1]
1e	8068167SP	Frypot Assemblies, Full-Vat Non-Filter with Insulation	1	[1]
1f	8068168SP	Frypot Assemblies, Full-Vat Filter with Insulation	1	[1]
1g	8068170SP	Frypot Assemblies, Dual-Vat Non-Filter with Insulation	1	[1]
1h	1064576SP	Frypot Assemblies, Dual-Vat Filter with Insulation	1	[1]
1i	8064951SP	Frypot Assemblies, Dual-Vat Filter with Insulation	1	[1]
2	8067433SP	Complete Assembly, Left	1	
3	8067432SP	Complete Assembly, Right	1	
4	8067434SP	Full-Vat Drain Valve Assembly	1	
5	8101569	Valve, 1.25-inch, Non-filter, Full-vat Drain	1	
6	8067915SP	Valve, 1-inch, Non-filter, Dual-vat, Left Drain	1	
7	8067916SP	Valve, 1-inch, Non-filter, Dual-vat, Right Drain	1	
8	8101338	Valve, 1-inch, Universal Ball	1	
9	8072103	Microswitch	1	
10	8160220	Insulation, Microswitch	1	
11	1062671	Bracket Assembly, Dual-Vat Left Drain Safety Switch	1	
12	1062672	Bracket Assembly, Dual-Vat Right Drain Safety Switch	1	
13	9012348	Cover, Dual-Vat Left Drain Safety Switch	1	
14	9022348	Cover, DV Safety Switch	1	
15	2013916	Valve Handle - Dual Vat - Left	1	
16	2004304	Handle, Non-CE Dual Vat BIH52 Right Drain Valve	1	
17	8140047	Cap, Vinyl Red	1	
18	8090539	Nut, 0.375-16 2-Way Lock	1	
19	9002934	Retainer, Dual-Vat Drain Valve Nut	1	
20	8090196	Washer, 0.375-inch SAE Flat	1	
21	8101165	Washer, Teflon Drain Valve	1	
22	8261366	Nut - #4-40 Keps Hex	25	
23	8101020	Valve, 1-inch Full-Vat Drain	1	
24	8068137	Bracket Assembly, Full-Vat Drain Safety Switch	1	
25	9002609	Handle, FV Drain	1	
26	8090540	Nut, Lock 0.5-inch-13 Hex 2-Way ZP	1	
27	8101568	Handle, Drain Valve	1	
28	8101567	Handle with Lock, Drain Valve (for Right Dual Vat MH52 Valve)	1	
29	8090589	Components, Nut, 0.5-inch Lock	1	
30	8130188	Drain Nipple, Extended	1	[2]
31	8130276	Drain Extension, 1-inch, Dual-vat	1	[3]

PART NOTES:

- [1] - for use in single fryers
- [2] - 1.25-inch
- [3] - 1-inch

Frypots and Drain Valve Assemblies