



HCP

Installation, Operation Manual
2 and 4-Slot Models Operated by a Palm-based PDA



Frymaster, a member of the Commercial Food Equipment Service Association, recommends using CFESA Certified Technicians.

* 8196213A *

24-Hour Service Hotline 1-800-551-8633

Price: \$6.00

819-6213A
NOV 11

THIS PAGE INTENTIONALLY LEFT BLANK

NOTICE

IF, DURING THE WARRANTY PERIOD, THE CUSTOMER USES A PART FOR THIS MANITOWOC FOOD SERVICE EQUIPMENT OTHER THAN AN UNMODIFIED NEW OR RECYCLED PART PURCHASED DIRECTLY FROM FRYMASTER/DEAN, OR ANY OF ITS AUTHORIZED SERVICERS, AND/OR THE PART BEING USED IS MODIFIED FROM ITS ORIGINAL CONFIGURATION, THIS WARRANTY WILL BE VOID. FURTHER, FRYMASTER/DEAN AND ITS AFFILIATES WILL NOT BE LIABLE FOR ANY CLAIMS, DAMAGES OR EXPENSES INCURRED BY THE CUSTOMER WHICH ARISE DIRECTLY OR INDIRECTLY, IN WHOLE OR IN PART, DUE TO THE INSTALLATION OF ANY MODIFIED PART AND/OR PART RECEIVED FROM AN UNAUTHORIZED SERVICER.

THE HCP IS NOT SUITABLE FOR OUTDOOR USE. WHEN OPERATING THIS UNIT, IT MUST BE PLACED ON A HORIZONTAL SURFACE.

THE HCP IS NOT SUITABLE FOR INSTALLATION IN AN AREA WHERE A WATER JET CAN BE USED. THIS APPLIANCE MUST NOT BE CLEANED WITH A WATER JET.

FOR YOUR SAFETY

DO NOT STORE OR USE GASOLINE OR OTHER FLAMMABLE VAPORS AND LIQUIDS IN THE VICINITY OF THIS OR ANY OTHER APPLIANCE.

DO NOT OPERATE OR SERVICE THE HCP WITHOUT FIRST READING THIS MANUAL.

DO NOT OPERATE THE HCP UNLESS IT HAS BEEN PROPERLY INSTALLED AND CHECKED.

DO NOT OPERATE THE HCP UNLESS ALL SERVICE AND ACCESS PANELS ARE IN PLACE AND PROPERLY SECURED.

DO NOT ATTEMPT TO REPAIR OR REPLACE ANY COMPONENT OF THE HCP UNLESS ALL POWER TO THE UNIT HAS BEEN DISCONNECTED.

USE CAUTION WHEN SETTING UP, OPERATING, OR CLEANING THE HCP TO AVOID CONTACT WITH HEATED SURFACES.

Table of Contents



Installation, Warranty, Parts	1-1
HCP Software Quick Start	2-1
Power Up	3-1
Operational Overview	4-1
Programming Overview	4-4
Entering Passwords Adding Menu Items	5-1
Programming	6-1
Changing from 4 to 2-Slot Operation	6-2
Moving Products from Food Library to Menus	6-2
Setting up Cabinet on Palm	6-2
Saving Cabinets	7-1
Loading Saved Cabinets	7-2
Temperature Display	8-1
Uploading Cabinet Configurations and Daily Activity to Palm	9-1
Loading Software for the Palm	10-1
Checking Palm Operating System Version Number	10-1
Loading Software on Palm	10-3
Beaming Software between Palms	10-6

1 HCP

The Frymaster HCP is a short-term holding device to extend the freshness of a wide variety of cooked products.

1.1 Warranty Statement

- A. Frymaster L.L.C. makes the following limited warranties to the original purchaser only for this equipment and replacement parts:

1.1.1 Warranty Provisions – Universal Holding Cabinet

- A. Frymaster L.L.C. warrants all components against defects in material and workmanship for a period of one year.
- B. All parts, with the exception of fuses, are warranted for one year after installation date of cabinet
- C. If any parts, except fuses, become defective during the first year after installation date, Frymaster will also pay straight-time labor costs to replace the part, plus up to 100 miles/160 km of travel (50 miles/80 km each way).

1.1.2 Parts Return

- A. All defective in-warranty parts must be returned to a Frymaster Authorized Factory Service r within 60 days for credit. After 60 days, no credit will be allowed.

1.2.3 Warranty Exclusions

- This warranty does not cover equipment which has been damaged due to misuse, abuse, alteration, or accident such as:
- Improper or unauthorized repair;
- Failure to follow proper installation instructions and/or scheduled maintenance procedures;
- Improper maintenance;
- Damage in shipment;
- Abnormal use;
- Removal, alteration, or obliteration of the rating plate;

This warranty also does not cover:

- Transportation or travel over 100 miles/160 km (50 miles/80 km each way), or travel time over two hours;
- Overtime or holiday charges;
- Consequential damages (the cost of repairing or replacing other property that is damaged), loss of time, profits, use or any other incidental damages of any kind.

HCP

There are no implied warranties or merchantability or fitness for any particular use of purpose.

For international warranty, the above procedures apply, except that the customer is responsible for freight and duty charges.

PARTS ORDERING AND SERVICE INFORMATION

Parts orders may be placed directly with your local Frymaster Factory Authorized Servicer (FAS)/Distributor. A list of Frymaster Factory Authorized Servicers (FAS's) is located on the Frymaster website at www.frymaster.com. If you do not have access to this list, please contact the Frymaster Service Department at 1-800-551-8633 or 1-318-865-1711.

To speed up your order, the following information is required:

Model Number _____
Serial Number _____
Voltage _____
Item Part Number _____
Quantity Needed _____

Service may be obtained by contacting your local Frymaster Authorized Servicer/Distributor. Service information may be obtained by calling the Frymaster Service Department. The following information will be needed in order to assist you quickly and efficiently:

Model Number _____
Serial Number _____
Nature of the
Problem _____

Also any other information which may be helpful in solving your service problem.

RETAIN AND STORE THIS MANUAL IN A SAFE PLACE FOR FUTURE USE.

IF THE HCP IS INSTALLED WITH THE COUNTERTOP OPTION, ENSURE THE AREA WHERE THE HCP BASE AND COUNTERTOP MEET IS PROPERLY SEALED WITH A FOOD GRADE TYPE SEALANT.

HCP Software Quick Start

Using the HCP software requires food items be established in a food library, menus to be established and cabinet configurations to be set, which are built from the menus. The software is loaded with generic items. Restaurant-specific items will need to be added.

Below is a quick look at this process with references to more detailed instructions and examples elsewhere in the manual.

Follow these steps to begin working with the HCP software:

Turn the Palm Pilot On and tap the HCP icon on the Palm display. See Section 5.

Tap the Key icon in the top menu bar of the software. See Figure 2 and Section 5.1.

Enter **manager** (all lower case) in the password dialog box. See Figure 1 and section 5.1.

Tap the Language button on the software interface and change the language setting from Default to English. See section 5.1.

Tap the Add button in the Food Library column. See Figure 3 and Section 5.2.

Tap the Edit button in the Food Library column. See examples in Section 5.2.

Use the keyboard to name and edit items in the food library. See examples in Section 5.2

Build menus for Menus 1— 5, by moving items from the Food Library to the desired menus. See Figure 4 and Section 6.2.

Configure cabinet arrangements by choosing items from the cabinet graphic pull-down menus, establishing a cabinet for each menu, 1 — 5. See Figure 3 and Section 6.2.

Beam the configurations to the cabinet. See Section 6-3.



Figure 1: Tap the key icon (see arrow) and enter manager.



Figure 1: Using the Add and Edit buttons in the Food Library column allows the creation of items for the Food Library.



Figure 3: Menus 1-5 are populated by highlighting items in the Food Library and copying them to the desired menu.



Figure 4: Cabinet configurations are built on the screen of the Palm by first choosing a Menu and then selecting a slot for each item, which are chosen with the pull-down at each slot position.

3 Power Up

ALL ELECTRICALLY OPERATED APPLIANCES MUST BE ELECTRICALLY GROUNDED IN ACCORDANCE WITH LOCAL CODES, OR IN THE ABSENCE OF LOCAL CODES, WITH NATIONAL ELECTRIC CODE, ANSI/NFPA NO. 70-1990.

A. Power Requirements:

- Voltage – 208/240 VAC
- 2620 Watts @ 208V – 3420 Watts @ 240V
- Frequency – 50/60 Hertz
- Single Phase
- 20 amp Service

THIS APPLIANCE IS EQUIPPED WITH A THREE-PRONG GROUNDING PLUG FOR YOUR PROTECTION AGAINST SHOCK HAZARD AND MUST BE PLUGGED INTO A PROPERLY GROUNDED THREE-PRONG RECEPTACLE. DO NOT CUT OR REMOVE THE GROUNDING PRONG FROM THIS PLUG.

B. Plug the HCP into the power source.

C. Place the power switch in the ON position. All control displays will illuminate green approximately 2 seconds after the power switch is activated.

D. Monitor the temperature of the slots. The time it takes the slot(s) to heat from ambient (room) temperature to a 155°F (68°C) setpoint should be approximately 15 minutes. It should take approximately 25 minutes to reach a 200°F (93°C) setpoint. If setpoint is not consistently achieved within these limits, call your local Factory Authorized Servicer for repair.

HCP

4 Operational Overview

The HCP is available in two and four-slot models. Each slot has a controller, which indicates product and holding time for each of three tray positions within a slot. The controller has a timer button for each tray position, a menu button and a temperature display button. Individual buttons are annotated below. There are two trays available, a high-side model, 816-0727, and a low-side model, 816-0726. There is a rack insert for the low-side tray, 803-0370.

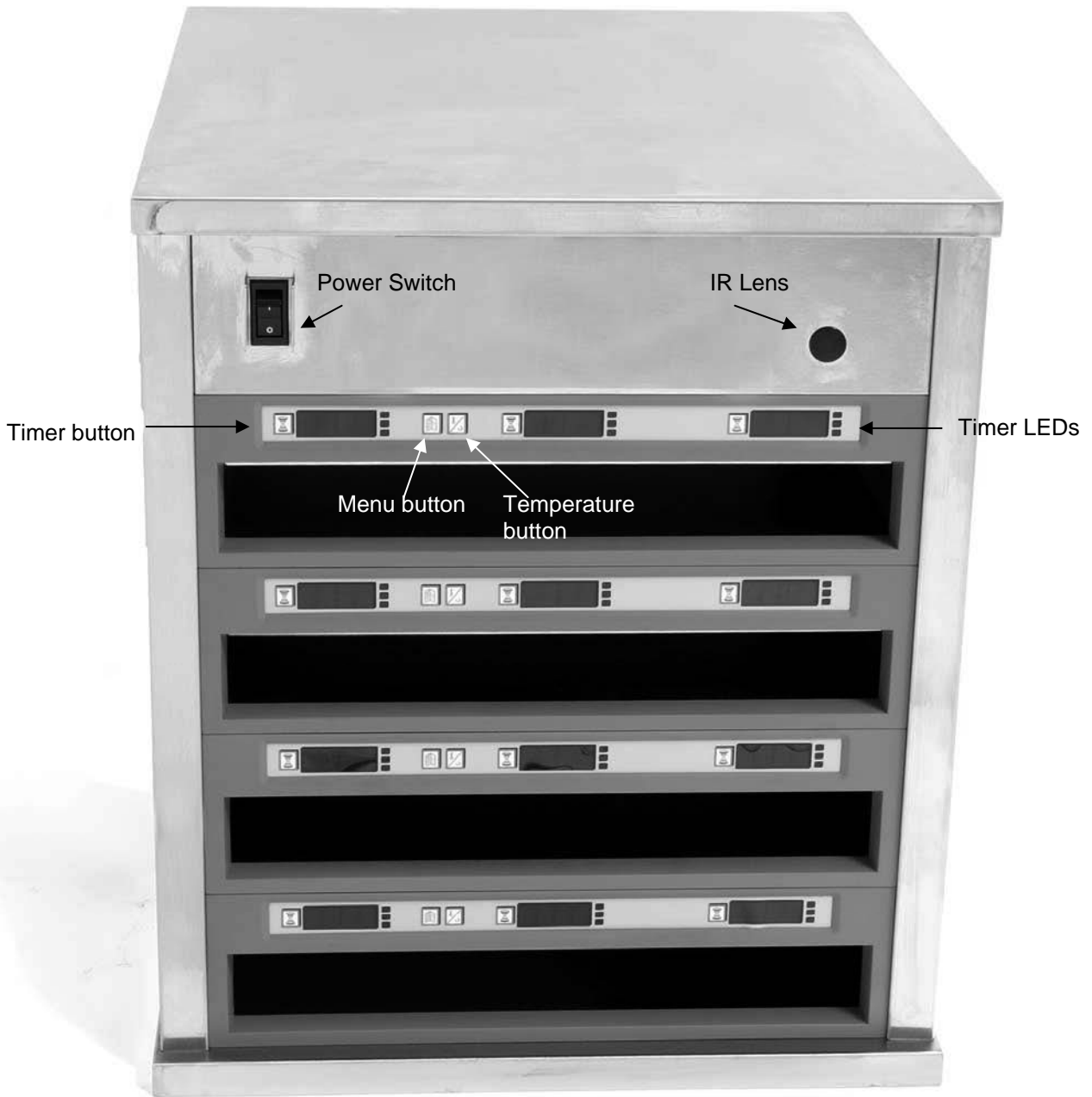


Figure 1

4.1 Cabinet Operation

1. Turn the power switch ON.
2. The displays will light and show LOW TEMP.
3. Press the Menu key to scroll to the desired menu, release the key and immediately press the Temperature key. The chosen menu is locked in. Menu or other setting changes require a Palm Pilot PDA and related software. Programming the cabinet with the Palm is covered in Chapter 4.

4.2 Timer Operation

Press the timer key adjacent to the desired slot. The timer counts down from a preset value. The display alternates between the product name and the remaining hold time. If more than one slot is holding the same product, the location with the least remaining holding time is indicated by a brighter display and illuminated dots.

Stopping the Timer

Press the timer key next to the slot position to turn a timer off. The timer stops and the display dims, indicating inactivity. The use-first indicator moves to the next appropriate slot.

4.3 Cook More Prompts

The Cook More prompt sounds at a preset time prior to the expiration of the last tray of a specific product. No acknowledgement is necessary. The three-second audible alarm and the display of COOK MORE serve as a reminder to cook more of the needed product.

4.4 Using Clean Mode

Press the Menu key repeatedly until Clean Mode is displayed on the screen. Release the key and immediately press the Temperature key. Upload Palm will display. (This is a prompt to upload data captured by the cabinet during the day's operation. Instructions for uploading data to the Palm are provided in Chapter 9.) Press the Temperature key again to display Slot Clean Mode. This changes the setpoint for all slots to 125°F (52°C). The display will alternate between SLOT CLN Mode and Not Safe Yet until the temperature of the slots reaches 125°F (52°C). The display then dims.

Exit Clean Mode by pressing the Menu key until the desired menu choice appears. Release the key and immediately press the Temperature key; the choice is locked in. This must be done for each slot. The display will show Slot Temp LOW until it reaches the setpoint for the chosen product.

4.4 Turning Slots OFF

Press the Menu key on a slot until `Slot Off` is displayed. Release the key and immediately press the Temperature key; the choice is locked in.

4.5 Temperature Display

Press the Temperature key four times and the temperatures and setpoints will be displayed in this sequence:

- Top plate temperature
- Bottom plate temperature
- Top plate setpoint
- Bottom plate setpoint

4.6 Temperature Alarms

There are five temperature alarms:

- High Temperature
- Low Temperature
- FDA
- Sensor
- Rise Time

If an alarm condition occurs, an audible alarm sounds and the display alternates between the product selection and the alarm message. Timers cannot be started if a slot is displaying an alarm message.

4.6.1 High and Low-Temperature Alarms

If the slot temperature is above or below the limits for the product selected, the display will show `Slot temp high` or `slot temp low`. An alarm will sound. Press a timer key to turn off the audible alarm. The audible alarm does not sound during initial cabinet startup.

4.6.2 Food and Drug Administration (FDA) Alarm

The FDA alarm indicates the slot temperature is below the preset limit to hold a product. An audible alarm sounds and the alarm message reads `Temp Under FDA`. Press a timer key to turn off the audible alarm. The message remains until the slot temperature is within limits. Press the timer key to clear the FDA alarm.

4.6.3 Sensor-Range Alarm

The Sensor Fail alarm indicates a sensor temperature value above or below the 90-250°F (32-121°C) range of the slot. An audible alarm sounds. The displayed message is `Sens Alarm`. Press a timer key to end the audible alarm. Service is required to correct the sensor alarm.

4.6.4 Rise-Time Alarm

A rise-time alarm indicates the slot temperature failed to reach operating temperature within a preset time after start up. The displayed message is `Sl ot Rise Rate`. An audible alarm sounds. Press a timer key to turn off the audible alarm. Service is required to correct a rise-time alarm.

4.6.5 Additional Out of Tolerance Displays

HHH in the display indicates a sensor error. Service is required.

LLLL indicates a sensor error or a slot below 50°F (10°C). Allow the slot to operate for 10 minutes. If LLLL remains, call for service.

4.7 Programming Overview

A Palm Pilot loaded with the HCP software is available. All programming of the cabinet, except initial default settings, is first entered into a Palm Pilot then beamed into the HCP. Below is an annotated look at the main HCP screens on a Palm Pilot. Programming and use are covered in Chapters 5 and 6. See the Palm Pilot manual for a description of its operation.

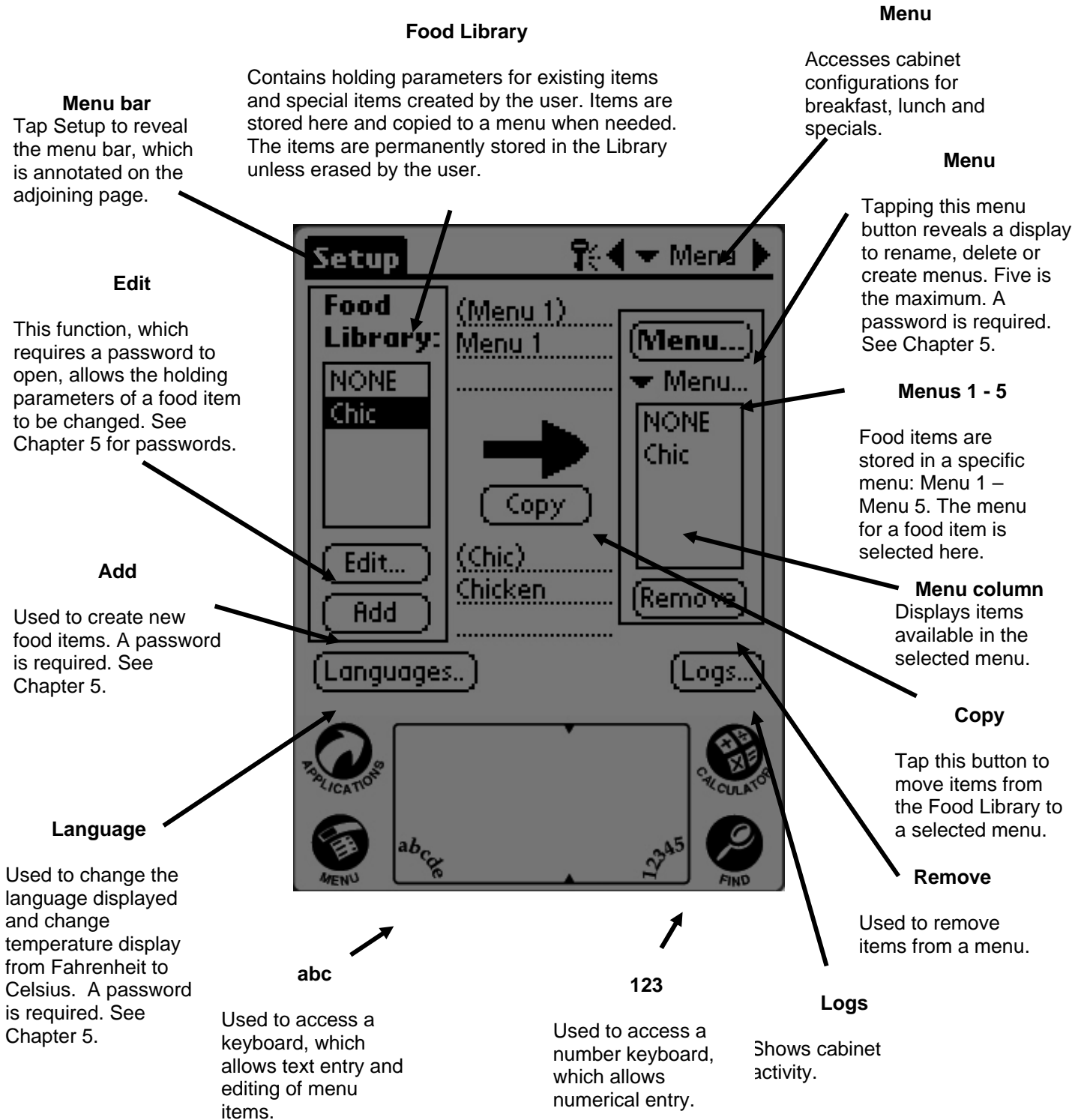


Figure 2

HCP

Menu bar

Tapping **View** produces a pull-down menu of selections. In many cases these items access features also accessible with buttons on the software interface. **Cabinet**, which is not accessible otherwise, opens a menu for changing the setup of the cabinet from two to four slots. It also provides access to the menu for calibration and readdress, features used by technicians.

Menu

Accesses cabinet configurations for all menus.



Figure 2

HCP

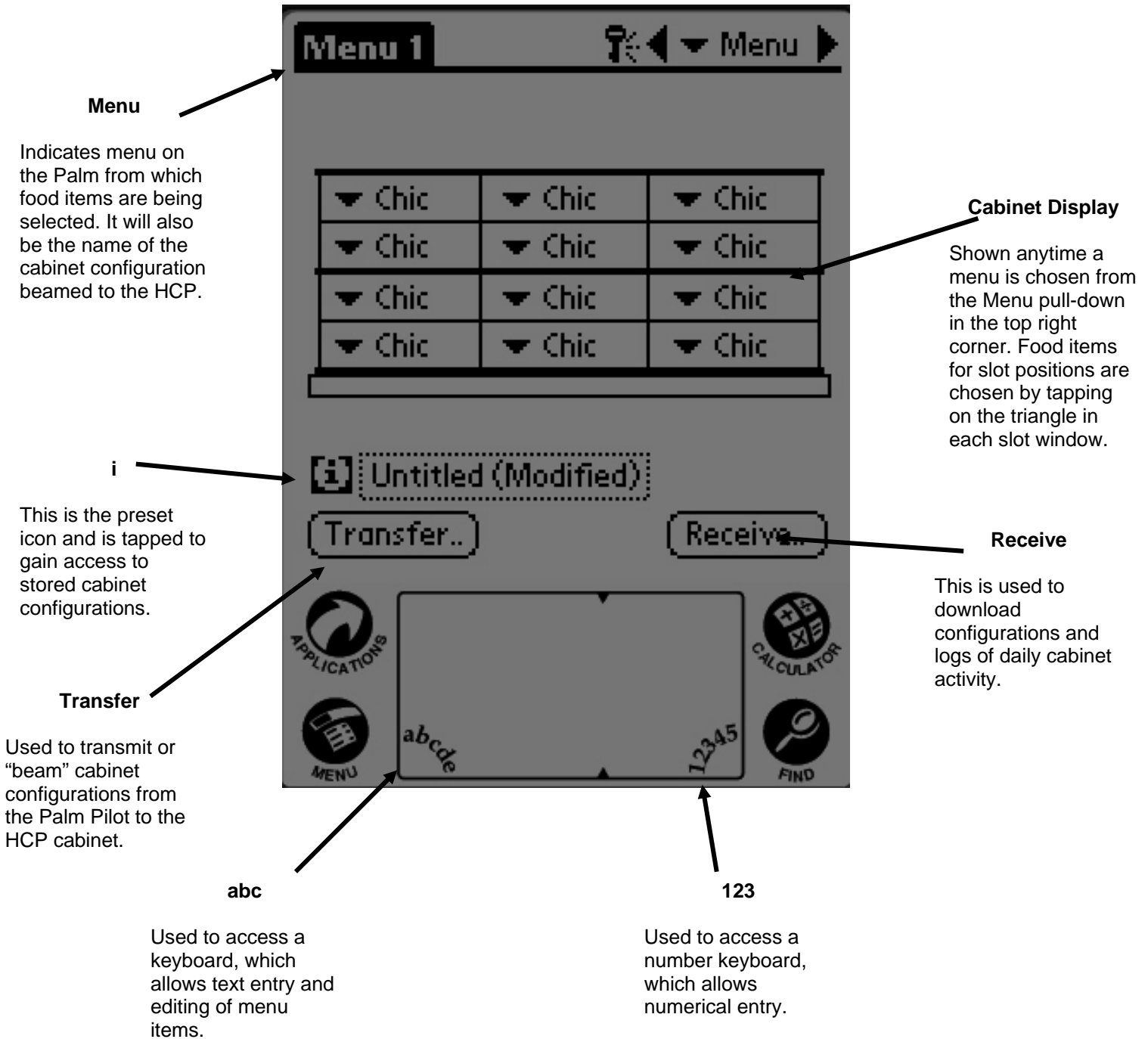


Figure 3

5 Opening the HCP Software

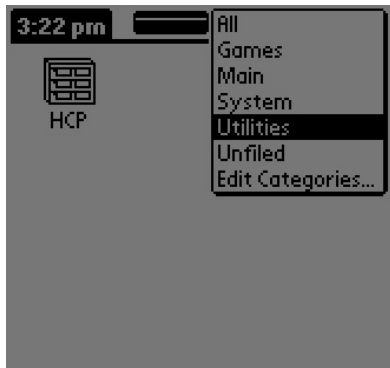


Figure 1: Select the HCP software from the Palm's Utilities.



Figure 2: HCP software opens to its Setup screen..

Turn the Palm Pilot ON and tap on the software menu item (likely to be All) displayed in the right top corner.

A drop-down menu lists groupings of software and other functions. Highlight Utilities by tapping on it. See **figure 1**.

The HCP icon shows on the screen. Tap it. The Setup screen is displayed. See **figure 2**.



Figure 1: Entering a password allows new products to be added and existing products to be edited.

5.1 Entering A Password/Choosing Language

The HCP software is provided with only one food item, chicken. Additional menu items must be added by the end user. Adding, editing or removing items in the Food Library and changing the temperature display require a password. Tap the Key icon in the top center of the HCP software. **Upper arrow in Figure 1**. The Security Manager screen appears.

Tap the **abc** icon in the bottom left of the screen. **Lower arrow in Figure 1**.

Use the keyboard screen that appears to enter the required password (**manager**) and tap OK.

The Security Manager screen reappears with the password in place. Tap OK.

A Current Security screen appears. Click OK.

Tap the Language button and choose English as the language in the Localization dialog box. Click Quit.

With the proper password and language entered, menu items can be entered and edited.

Exit the HCP software by tapping the House icon on the Palm screen, which will cause it to default to the Cook password setting upon restart.



Figure 2: Set the Language selection from Default to English after tapping the Language button.

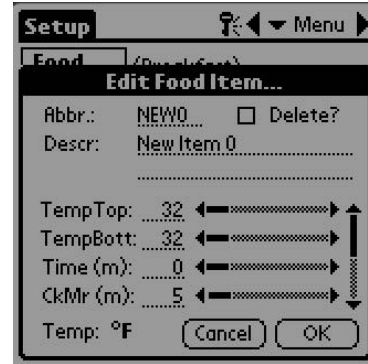
5.2 Entering Menu Items



Step 1: Enter a password as described in section 5.1. Menu items are added by clicking the add button in the Food Library window. See arrow.



Step 2: NewO appears highlighted in the Food Library window. With the NewO item highlighted, tap the Edit button.



Step 3: The Edit Food Item menu appears. It allows the product to be named and holding temperatures, times and prompts to be entered.



Step 4: Tap on the line next to the abbreviated name. Then tap on the abc icon in the corner of the Palm window (see arrow).



Step 5: Use the backspace key to eliminate the NewO item text. Tap on the keys to enter an all-capital, four-letter abbreviated name for the product. Hit Done. Repeat these steps to enter a description.



Step 6: Tap next to the underlined temperature settings and then tap on the number icon in the bottom right of the Palm display. A numeric keypad is displayed. Use it — just as the keyboard is used in steps 4 and 5 — to enter setpoint temperatures, set hold time, cook more time and countdown lights.



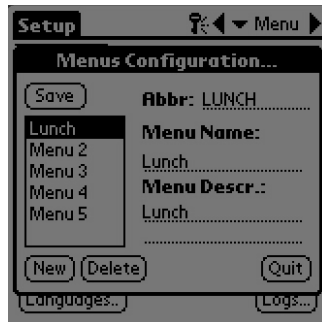
Step 7*: Use the vertical slider on the right side of the screen to access four more options and adjust them for the new product.

Tap OK and the new item is stored in the Food Library and can be moved to a menu for transfer to the HCP.

5.3 Changing Menu Name/Deleting Menu



Step 1: Go to the menu window by clicking the Menu... button in the right column of the display. See arrow.



Step 2: The Menu Configuration screen is displayed. Highlight a menu to be deleted by tapping on it. Tap the Delete button to eliminate the highlighted menu.

Use the New button to create a new menu. Tap on the Abbr: field and then tap the **abc** icon to access the keyboard to enter a name for the new menu item. Repeat to enter a menu name and description.

NOTE: The new menu item will have to be populated by moving items from the food library to the new menu, a process described in section 6.2.

Tap the Save button to save the new menu.

6 Programming the HCP



Figure 1: Palm Pilot with HCP software displayed.

A PDA with HCP software installed must be used to alter or add to the menu items stored in the HCP cabinet. A Palm Pilot with the software loaded is available (106-6658) for the HCP. Other Palm models can be used, however, they must have version 4.0 or later of the Palm operating system.



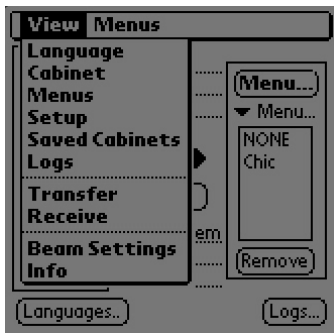
Figure 2

The Palm and its HCP software make setups for promotional items and special configurations easy to build and repeat. Cabinet configurations and daily cabinet activity can be uploaded from the HCP to the Palm.

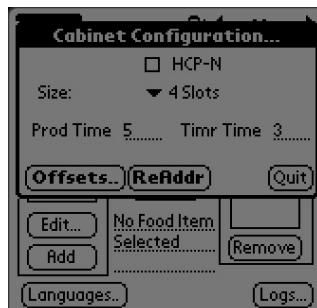
With the proper security clearance, menu items can be created and edited in the software. **Figure 1.**

The new items, along with existing products, are stored in the Food Library, where they can be moved to the Menu and beamed into the HCP cabinet. The configurations established in the Palm Pilot are beamed into the HCP cabinet's lens. **See figure 2.**

6.1 Setting the HCP Software for 2 or 4-Slot Operation

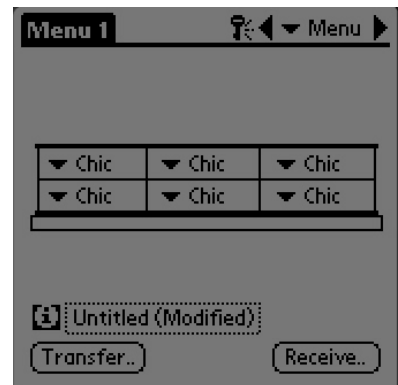


Step 1: Tap the setup icon in the top left corner of the screen to reveal the menu bar and tap View and then choose Cabinet.



Step 2: In the Cabinet Configuration screen's pull-down menu, set the number of slots in the unit. The number of seconds the cabinet displays the product name and the remaining hold time can also be adjusted. See figure 2 on page 4-5 for accessing a keypad for numeric entry.

NOTE: A HCP-N box is displayed, however, that feature is not available.

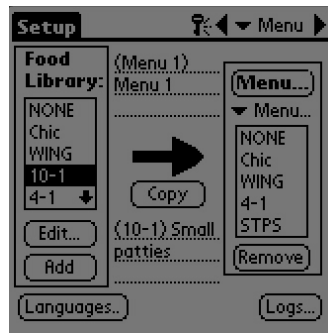


Step 3: Tap quit and the cabinet graphic reflects the change.

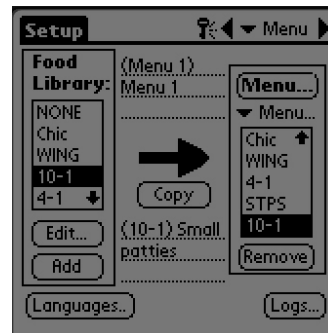
6.2 Moving Products from the Food Library to the Menu



Step 1: NOTE: A password is required to alter the menu. See Chapter 5 for password entry. Tap Menu and a pull-down is displayed. Highlight a menu location by tapping it.

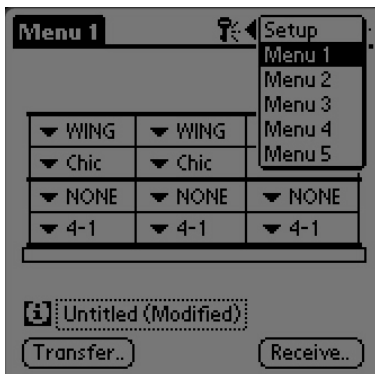


Step 2: Highlight the menu item in the Food Library by tapping on it once.



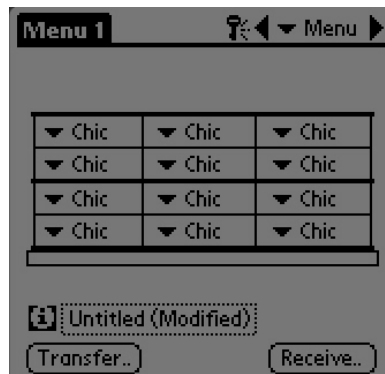
Step 3: Tap the Copy button once and the item is copied into the Menu window and is available for loading into the HCP cabinet. The item also remains in the Food Library.

6.3 Setting Up the Cabinet on a Palm Pilot



Step 1: Tap Menu in the top right corner. The Setup menu is displayed. Choose Menu number by tapping on the word. In this example, Menu 1 is configured.

Note: These steps should be repeated to configure the cabinet for each menu. All five of the menu configurations are transferred to the cabinet each time menu changes are beamed into the HCP cabinet.



Step 2: A graphic of the HCP cabinet is displayed

Note: Graphics used in these instructions reflect the full-size 4-slot cabinet. Programming a 2-slot cabinet is identical, however, the graphic on the Palm screen, with the changes shown in section 6.3, will reflect the cabinet being programmed.



Step 3: Tap on a leftmost slot and from the drop-down menu select a menu item (Entering menu items is covered in Section 5). **Note:** The leftmost slot positions establish the setpoint for that slot. Items with incompatible setpoints cannot be selected for adjacent positions.

Items are removed from a menu by highlighting them in the menu window and tapping the Remove button at the bottom of the menu display.

HCP



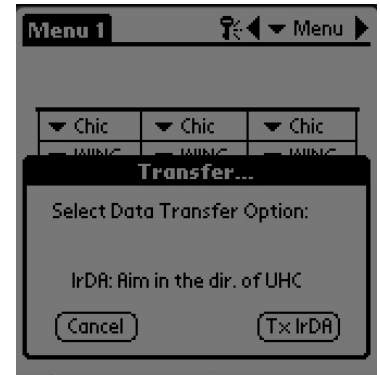
Step 4: Choose a product for each slot. All the products in a slot must have compatible setpoints.

Repeat these steps to configure the cabinet for each menu.

NOTE: All five of the menu configurations are transferred to the cabinet each time menu changes are beamed into the HCP cabinet.



Step 5: The cabinet should now be configured for all five menus.



Step 6: Ensure the receiving lens on the front of the HCP cabinet is clean. Hold the Palm Pilot parallel with the floor and aim it at the lens from no more than one foot away.

Tap the Transfer button.

Tap the TxIrDa button.

The cabinet will beep and the Palm Pilot will display a message, indicating a successful transfer. All five menus established on the Palm are now accessible with the menu key on the HCP cabinet.

7 Saved Cabinet Configurations



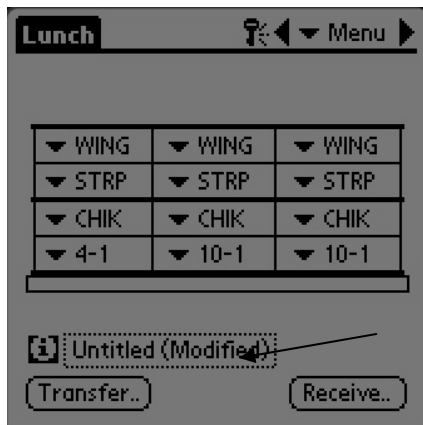
The Saved Cabinet feature allows cabinet configurations to be loaded and stored permanently in the Palm Pilot. These configurations, reflecting daily, weekend and special menu setups for all five of the menus retained in the HCP cabinet, can be recalled and beamed into multiple HCP cabinets.

This feature is useful to retain cabinet configurations for different stores and specials.

The cabinet configuration displayed on the Palm must be changed when setting up special configurations for saving. To name and save the existing cabinet configurations in your Palm, follow the procedure below — beginning with Step 2.

Follow the steps below to enter the Saved Cabinet mode to create and store cabinet configurations.

7.1 Saving Cabinets



Step 1: When changes are made to the layout of the cabinet on the displayed graphic, the text by the i icon changes to (Modified). See arrow. This is a prompt that the layout has been changed. It is possible to save the new configuration.



Step 2: Clicking on the i icon displays the Saved Cabinets dialog box. The buttons are described below.

Open: Loads highlighted cabinet configuration.

Delete: Eliminates highlighted cabinet configurations.

Save: Saves new cabinet configurations to the saved cabinet box. Hit only after cabinet configuration has been named.

New: Starts process of saving cabinet.

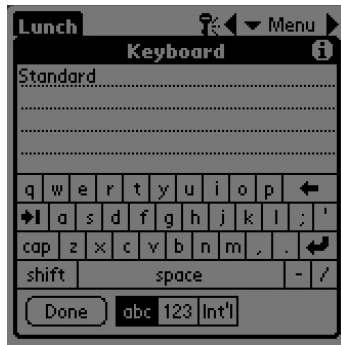
Cancel: Exits program or aborts saving cabinet operation.



Step 3: Clicking New produces a date in the Name field and in the box, which stores named cabinets.



Step 4: Click in the desired field on the dialog box and click on the **abc** icon at the bottom left (see arrow) to display a keyboard for name and description entry.



Step 5: Use the keyboard to enter a name. Indicate in the name if the saved configuration is for a 2-slot cabinet when appropriate. Click Done when complete. Repeat the process to enter a description.



Step 6: Click Save and the date which appeared in Step 3 in the list of saved cabinets is changed to the entered name.

7.2 Loading Saved Cabinets



Step 1: From the menu screen, click the **i** icon.



Step 2: Highlight the desired cabinet by clicking on the name. Click the Open button to load the chosen configuration.



Step 3: The chosen cabinet configuration is displayed.

7.3 Deleting Saved Cabinets



Step 1: From the menu screen, click the i icon.



Step 2: Highlight the saved cabinet to eliminate.



Step 3: A dialog asks are you sure you want to delete the cabinet. Click Yes if sure.



Step 4: The highlighted cabinet is removed from the saved cabinet list. Click cancel to leave the Saved Cabinet dialog box. Highlight and load a saved cabinet, if desired, by highlighting the name and clicking Open.

8 Fahrenheit to Celsius



Figure 1: Arrow points to the Language button, where the temperature display can be altered.

A password must be entered to change the temperature display. See Password Access in Chapter 5.

The temperature display is accessed from the Language button on the Setup Screen. **See figure 1.** The temperature change takes place immediately after selection.

8.1 Changing Temperature Display



Step 1: Enter the password as detailed in Chapter 5 and then tap on the Language button and the Localization window is displayed. Check Celsius to change the temperature range displayed to Celsius.



Step 2: Tap the Quit button.



Step 3: Temperatures displayed when editing or adding menu items will be displayed in Celsius.

Repeat the steps, un-checking the Celsius box, to change the displayed temperature range to Fahrenheit.

9 Uploading Cabinet Configurations and Daily Activity



Figure 1: To prepare the Palm Pilot to receive data from the HCP cabinet, tap the receive button.

The cabinet records daily activity and the data can be uploaded to the Palm each day prior to turning the cabinet off. This can be done at anytime. Also, the cabinet prompts for the data to be uploaded when the HCP is put in the clean mode. See Page 4-2.

A cabinet's configuration can also be downloaded to the Palm. Follow the steps at left and choose the Menu button. The cabinet displayed on the PDA should be saved before receiving a new configuration, which will overwrite the existing Palm display. See Chapter 7 for instructions on using the Save Cabinet function.

Cabinet configurations received from two-slot units will alter that setting on the Palm. See Section 6.1 for instructions on setting up the software.



Figure 2: To download a cabinet's configuration, hold the Palm parallel to the floor and a foot away from the cabinet's lens in the top right corner. Tap the RX Mnems button. To download a log of daily activity, tap the Rx logs button. A dialog box will display after the transfer is complete. Button names on later software versions may vary from what's shown above.

10 Loading Software for the Palm

A Palm Pilot loaded with the HCP software is available from Frymaster as an accessory (Part # 106-6658). HCP software, which can be loaded on a Palm PDA is on a CD. A Palm operating system of 4.0 or higher is required to operate the software. See the Palm manual for instructions on installing, operating and deleting software from the Palm. Failed or outmoded HCP software must be removed from the Palm Pilot before new HCP software can be installed.

Instructions for checking the Operating System version are provided below for a Palm PDA. This information can also be found in the Palm manual.

10.1 Checking the Palm Operating System Version Number



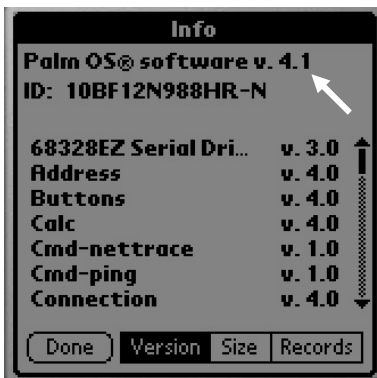
Step 1: From a main screen, tap on the time display in the left top corner of the screen or the System icon in the bottom left. A drop-down menu is displayed.



Step 2: Tap on Info.



Step 3: From the displayed menu, tap Version in the bottom of the display. See arrow.



Step 4: The version number is shown at the top of the display. See arrow. Version 4.0 or higher is required to operate the HCP software.

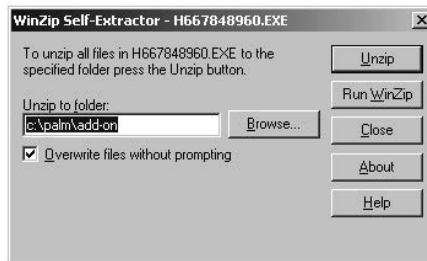
NOTE: Operating system updates are available at Palm's Web site. However, not all Palm units can run the newer operating systems. Check your Palm manual and the Palm Web site, <http://www.palmsource.com/palmos/>.

10.2 Loading Software on Palm

These instructions assume Palm desktop software is installed on your computer and a Palm with an operating system of 4.0 or higher is attached to the computer. Some familiarity with the Palm desktop software is also necessary. See the Palm manual for instructions on installing, operating and deleting software from the Palm. Failed or outmoded HCP software must be removed from the Palm Pilot before new HCP software can be installed.



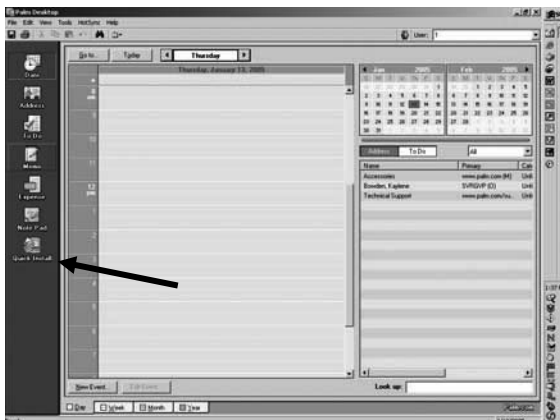
Step 1: Install the HCP software CD on your computer and copy the compressed HCP file to your desktop.



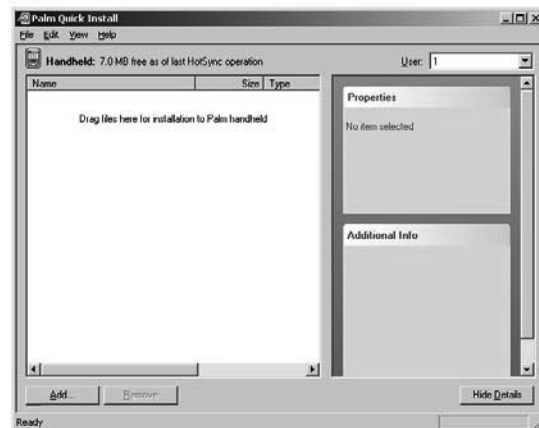
Step 2: A self-extracting dialog box will be displayed. The Unzip to folder in the dialog box should show your Palm add-on folder as the site it will be saved. If not, click the Browse button and navigate to that folder. The Palm folder should be on your C drive and can be stored in the C:\Program Files directory. The Add-on folder is in the Palm folder. With the Unzip to folder showing the Palm Add-on folder, click Unzip.



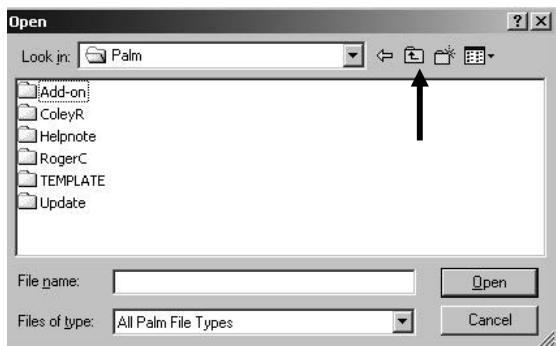
Step 1: A dialog box showing a successful extraction will be displayed.



Step 4: Open the Palm Desktop software by clicking on the icon on your computer's desktop and click the Quick Install button. See Arrow.



Step 5: The Install Tool is displayed. Click the Add button.



Step 6: The Palm's Add-on folder should open. If not, navigate to it by clicking the folder icon. See Arrow. When the Palm folder is visible in the dialog box, double-click it and its contents will be displayed.

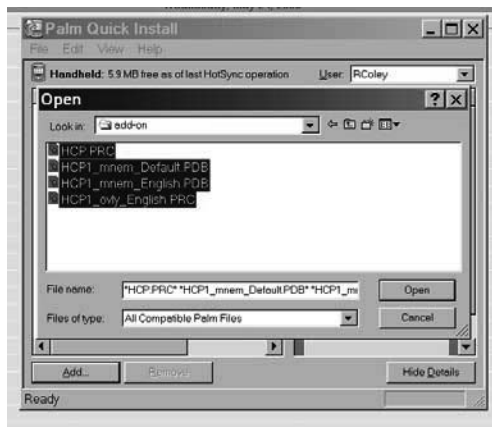
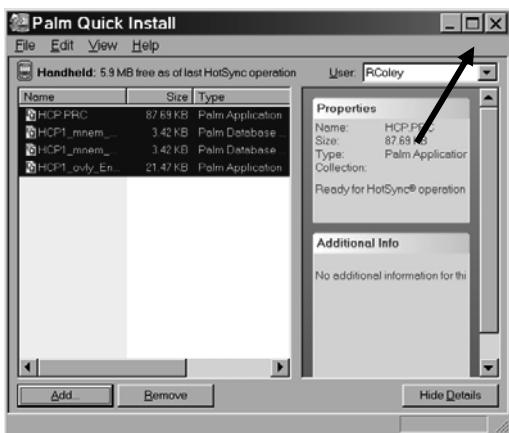
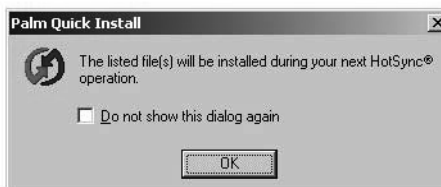


Figure 7: Double-click the Add-on folder and its contents are displayed. Hold down the control key and single-click all files in the folder with a HCP prefix. Click Open.



Step 8: The Install Tool is displayed with the highlighted HCP files. Close this box. See arrow.



Step 9: A new Install Tool dialog box will be displayed, saying the files will be installed when a HotSync is performed. Click OK.



Step 10: Press the HotSync button on the Palm's cradle. The HotSync Progress dialog box is displayed. A HotSync successful transfer message will be displayed on the Palm's screen.



Step 11: Turn on the Palm. You will find the HCP icon in the Utilities menu. Click it.



Step 12: It is necessary to enter a password and change the language display from Default to English at the completion of the software installation. See Chapter 5 for password entry language choice instructions.

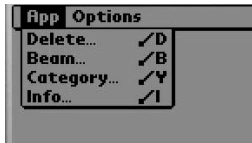
Setting the software for 2 or 4-slot operation is covered in Chapter 5.

10.3 Beaming Palm Software Between Palms

The HCP software can be beamed, or transferred, from one Palm to another by merely placing the units head to head and choosing Beam from a drop-down menu. Follow these steps to beam software between units. See the Palm manual for instructions on installing, operating and deleting software from the Palm. Failed or outmoded HCP software must be removed from the Palm Pilot before new HCP software can be installed.



Step 1: Place Palms head to head as shown. Delete any earlier version of the HCP software from the receiving Palm. In the unit which contains the HCP software, tap the time display (top left) or the System icon (bottom left).



Step 2: Highlight Beam in the pull-down menu that is displayed.



Step 3: The Beam dialog box is displayed. Highlight the UHC software. Tap the Beam button.



Step 4: The Palm will search for and find the adjacent Palm and beam the software and data. A success message will be displayed when the transfer is complete.



Step 5: Food items will not be visible in the Food Library. Change the password. (See Password Entry in Chapter 5.)

Tap the Language button and change the language choice from Default to English.

Setting the software for 2 or 4-slot operation is covered in Chapter 6.



NOTE: On some Palms with older operating systems, it may be necessary to beam the software with the HCP program open. With the Palm Pilots arranged as described in Step 1 above and the HCP software displayed, follow these steps:

- Tap the Setup icon to reveal the menu bar. Also see Figure 3, Page 4-6.
- Tap View to reveal the drop-down menu shown at left.
- Tap Beam Settings.

The Palm receiving the program will beep during the process and it will be necessary to tap a Yes button during the process to continue the transfer on both Palms.

11 Cleaning and Preventive Maintenance

After Each Use – Clean Trays/Racks

1. Remove all trays and clean trays by washing in a hot detergent solution.

Daily – Clean Cabinet

1. At the end of the operating day, turn unit to Clean Mode. Follow steps on Page 4-2.
2. Let the unit cool until SAFE to CLN is displayed. Use a brush to remove any remaining buildup on the slot surface by pushing the particles out the opposite end of the cabinet.

Note: Use only the cabinet cleaning brush to clean the cabinet slots. Wire brushes, abrasive pads, or metal scrapers will permanently damage the surface of the cabinet slot.

3. With the cabinet cleaning brush, push all loose particles out the opposite end of the cabinet.
4. Use a wet, clean/sanitized towel and the cabinet-cleaning brush to clean each slot. Clean the bottom and top surface of each slot.
5. Wipe clean all exterior cabinet surfaces with a clean, sanitized towel.
6. Turn the unit off.

Weekly – Cabinet Slots

Calibrate the top and bottom plates in all HCP slots by performing the following procedure with the slots clean, empty and at operating temperature for at least 30 minutes.

1. Press the temperature key (See Figure 1, Page 3-1) to ensure the slot is at setpoint.
2. Slide an Atkins sensor into a slot with the sensor facing upward to measure the top heater plate or down to measure the bottom heater plate. Move the sensor to the center of the plate. To get an accurate reading, the sensor must be within ± 1 inch (25mm) of the center of the plate.
3. Allow three minutes for the sensor to stabilize.
4. Read the temperature on the Atkins meter and compare to the reading from the cabinet, which is displayed by pressing the temperature key once for the top plate temperature and twice for the bottom plate. The displayed temperature should be within $\pm 5^\circ\text{F}$ ($\pm 3^\circ\text{C}$) of the meter. If the reading is out of tolerance, perform the following procedure.

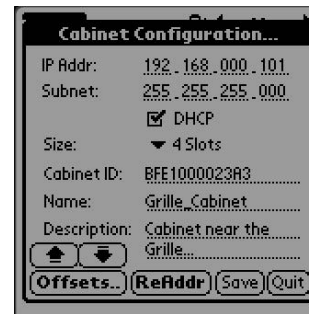
Launch the HCP software on the Palm and follow these steps:



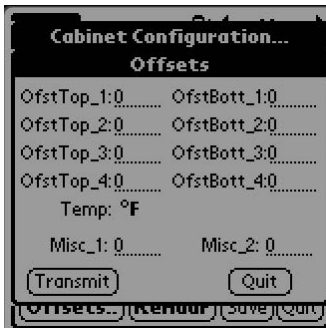
Step 1: Tap the left corner of the display in Setup or Menu mode. A menu bar is displayed.



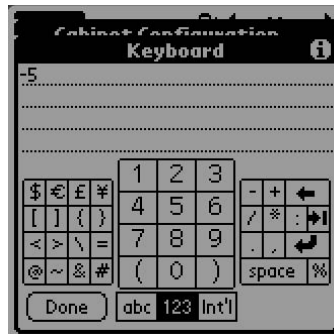
Figure 2: Tap View in the menu bar and tap Cabinet in the pull-down menu.



Step 3: The Cabinet Configuration menu is displayed. Tap the Offsets button in the left corner.



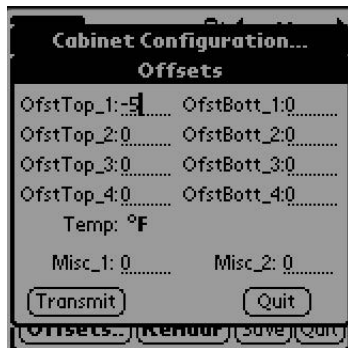
Step 4: The Cabinet Configuration Offset menu is displayed. The offset entry fields for the slots are arranged left to right and top to bottom. The miscellaneous fields in the bottom of the display are currently unused.



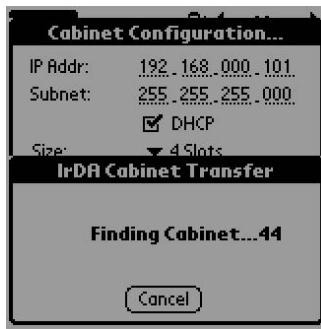
Step 5: Tap on the number line by the plate being offset and then the number icon (See Figure 1, Page 3-5) in the bottom right of the Palm display. Use the backspace key to erase number in the field and use the keypad to enter the desired offset. See examples in Table 1 (at right). Tap Done.

Offset Entry Examples		
Display	Meter	Correction
150°F	155°F	5
150°F	145°F	-5
66°C	69°C	3
66°C	63°C	-3

Table 1



Step 6: The entered offset is visible on the menu. In this case we offset the top slot's top heater plate -5°F . Adjust other slots as necessary.



Step 7: With the Palm horizontal and approximately one foot from the receiving lens on the cabinet, tap the Transmit button. The Transfer menu will be displayed. A message will be displayed when the transfer starts and when the transfer is complete.

Annually – Clean Air Exhaust Fans

CAUTION

Failure to disconnect the power at the wall power supply could result in serious injury or death. The cabinet power switch DOES NOT disconnect all incoming power to the cabinet. This service should only be performed by qualified service personnel.

CAUTION

Use caution when handling the cabinet. Each cabinet weighs over 200 pounds. Maneuvering/handling the unit should only be attempted with at least two people.

1. At the end of the operating day, place the unit in the CLEAN MODE.
2. Perform all daily maintenance requirements.
3. Disconnect power at the power source before beginning yearly maintenance. See caution above.
4. With a Phillips screwdriver, remove the two screws in each side panel. Set the screws aside.
5. Remove the side panels from the unit.
6. Gently brush any dust from the circuit boards on the side of the unit.

HCP

7. Gain access to the exhaust fans as follows:
 - a. If the cabinet is a single stand-alone unit or the top unit of a stacked arrangement, use a 5/16" socket driver to remove the four screws holding the cabinet top in place. Remove the cabinet top. Skip to step 10.
 - b. If the cabinet to be serviced is the bottom unit of a stacked arrangement, use a 5/16" socket driver and remove the four screws holding the equipment shelf in place. The screws are located on each side of the unit, near the top corners of the inner panel.
8. Use a 5/16" nut driver to remove the two #10-32 hex-head screws from each side of the front fascia.
8. Pull the front fascia out. It is not necessary to disconnect the switch wiring.
9. Remove wire and wire harnesses as needed to free the shelf. Mark each wire distinctly for re-assembly. Grab the edge of the shelf and pull straight out until the shelf engages the stops. Place the fascia on top of the shelf.
10. Wipe down the blades of the air exhaust fans with a clean cloth. Take care not to touch any electrical connections with the cloth. This procedure ensures efficient fan operation.
11. Reverse steps to reassemble the unit.

THIS PAGE INTENTIONALLY LEFT BLANK



Frymaster, L.L.C., 8700 Line Avenue, Shreveport, Louisiana 71106

TEL 1-318-865-1711 FAX (Parts) 1-318-219-7140 FAX (Tech Support) 1-318-219-7135

PRINTED IN THE UNITED STATES

SERVICE HOTLINE
1-800-551-8633

Price: \$6.00
819-6213A
NOV 11