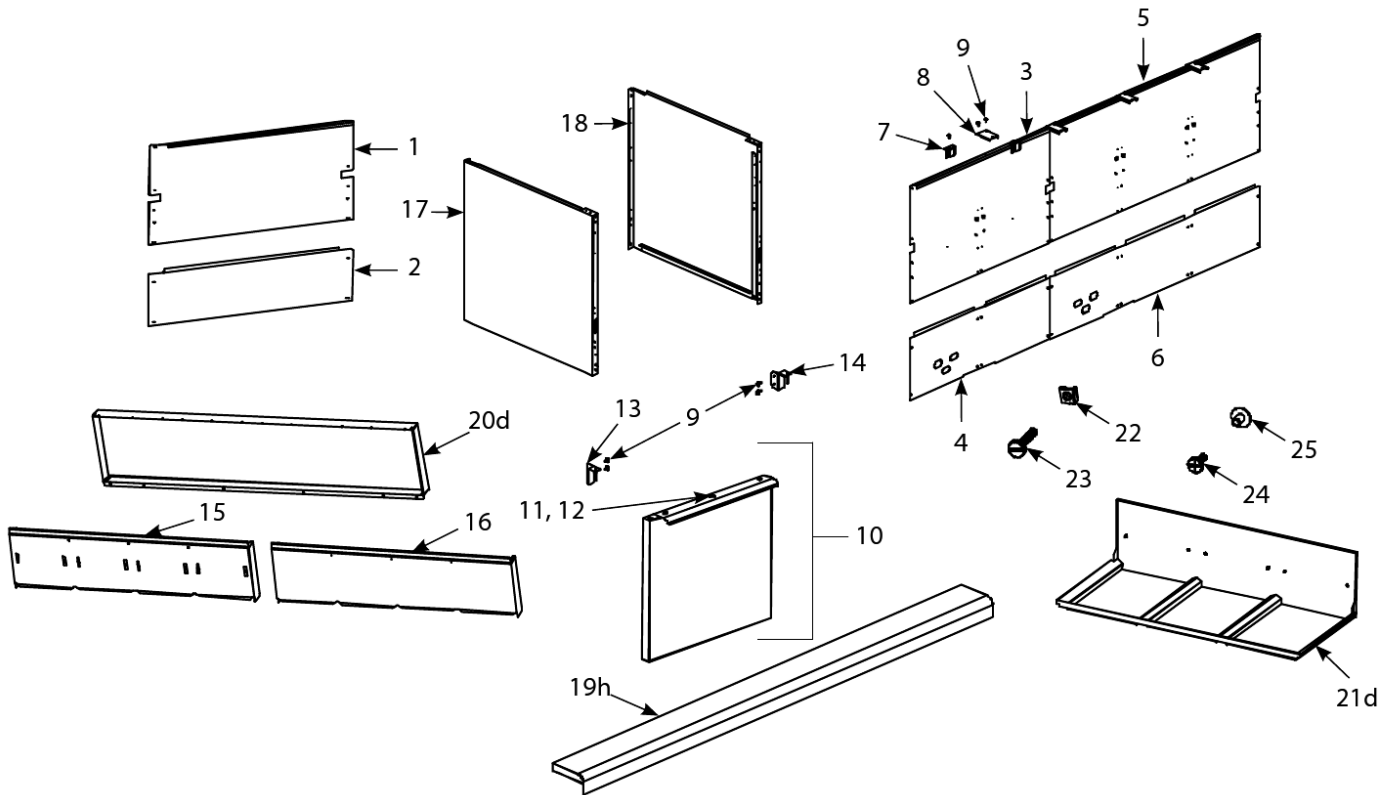


# BIPH52-55 and MPH52-55 Series Gas Fryers

Cabinetry - Backs, Doors, Flue Caps, Sides, Top Caps,  
Standoffs and Cap-N-Splash Assemblies



## BIPH52-55 and MPH52-55 Series Gas Fryers

### Cabinetry - Backs, Doors, Flue Caps, Sides, Top Caps, Standoffs and Cap-N-Splash Assemblies

#	PART #	DESCRIPTION	QTY	Note
1	2106581	Back, Single Upper, Stainless Steel	1	
1a	2006581	Back, Single Upper, Cold Rolled Steel	1	
2	2106580	Back, Single Lower, Stainless Steel	1	
2a	2006580	Back, Single Lower, Cold Rolled Steel	1	
3	2106542	Back, Double Upper (for 2-, 4-, and 5-station fryers – does not include Items 7-9), Stainless Steel	1	
3a	2006540	Back, Double Upper (for 2-, 4-, and 5-station fryers – does not include Items 7-9), Cold Rolled Steel	1	
4	2106541	Back, Double Lower (for 2-, 4-, and 5-station fryers – does not include Items 7-9), Stainless Steel	1	
4a	2006539	Back, Double Lower (for 2-, 4-, and 5-station fryers – does not include Items 7-9), Cold Rolled Steel	1	
5	2106545	Back, Triple Upper (for 3- and 5-station fryers – does not include Items 7-9), Stainless Steel	1	
5a	2006547	Back, Triple Upper (for 3- and 5-station fryers – does not include Items 7-9), Cold Rolled Steel	1	
6	2106544	Back, Triple Lower (for 3- and 5-station fryers – does not include Items 7-9), Stainless Steel	1	
6a	2006546	Back, Triple Lower (for 3- and 5-station fryers – does not include Items 7-9), Cold Rolled Steel	1	
7	2006419	Clip, Flue Support	1	
8	2005865	Support, Flue Cap	1	
9	8261374	Screw - #10 x 0.5" Hex Head	25	
10	1063966	Door, Left or Right	1	[1]
11	8090266	Screw, 10 x 0.5-inch Phillips Head ZP	1	
12	2106816	Handle, Door	1	
13	8234729	Hinge, Left Door Upper	1	
14	8234730	Hinge, Right Door Upper	1	
15	2105549	Flue Cap-Stainless Steel (Does not include Item 27), Single Fryer	1	
15a	1063579	Flue Cap-Stainless Steel (Does not include Item 27), 2-Station Fryer	1	
15b	1063537	Flue Cap-Stainless Steel (Does not include Item 27), 3-Station Fryer	1	
15c	1063535	Flue Cap-Stainless Steel (Does not include Item 27), 4-Station Fryer	1	
15d	1063536	Flue Cap-Stainless Steel, 5-Station Fryer	1	
16	2105525	Flue Cap - Aluminized Steel for use with Cap-N-Splash, Single Fryer	1	
16a	1063539	Flue Cap - Aluminized Steel for use with Cap-N-Splash, 2-Station Fryer	1	
16b	1063540	Flue Cap - Aluminized Steel for use with Cap-N-Splash, 3-Station Fryer	1	
16c	1063542	Flue Cap - Aluminized Steel for use with Cap-N-Splash, 4-Station Fryer	1	
16d	1063543	Flue Cap - Aluminized Steel for use with Cap-N-Splash, 5-Station Fryer	1	
17	2116510SP	Side, Left Standard Cabinet, Stainless Steel	1	
17a	2016633	Side, Left Standard Cabinet, Enameled Steel	1	
18	2126510SP	Side, Right Standard Cabinet, Stainless Steel	1	
18a	2026633	Side, Right Standard Cabinet, Enameled Steel	1	
19	8241310	Top Cap, Single Fryer	1	

## BIPH52-55 and MPH52-55 Series Gas Fryers

### Cabinetry - Backs, Doors, Flue Caps, Sides, Top Caps, Standoffs and Cap-N-Splash Assemblies

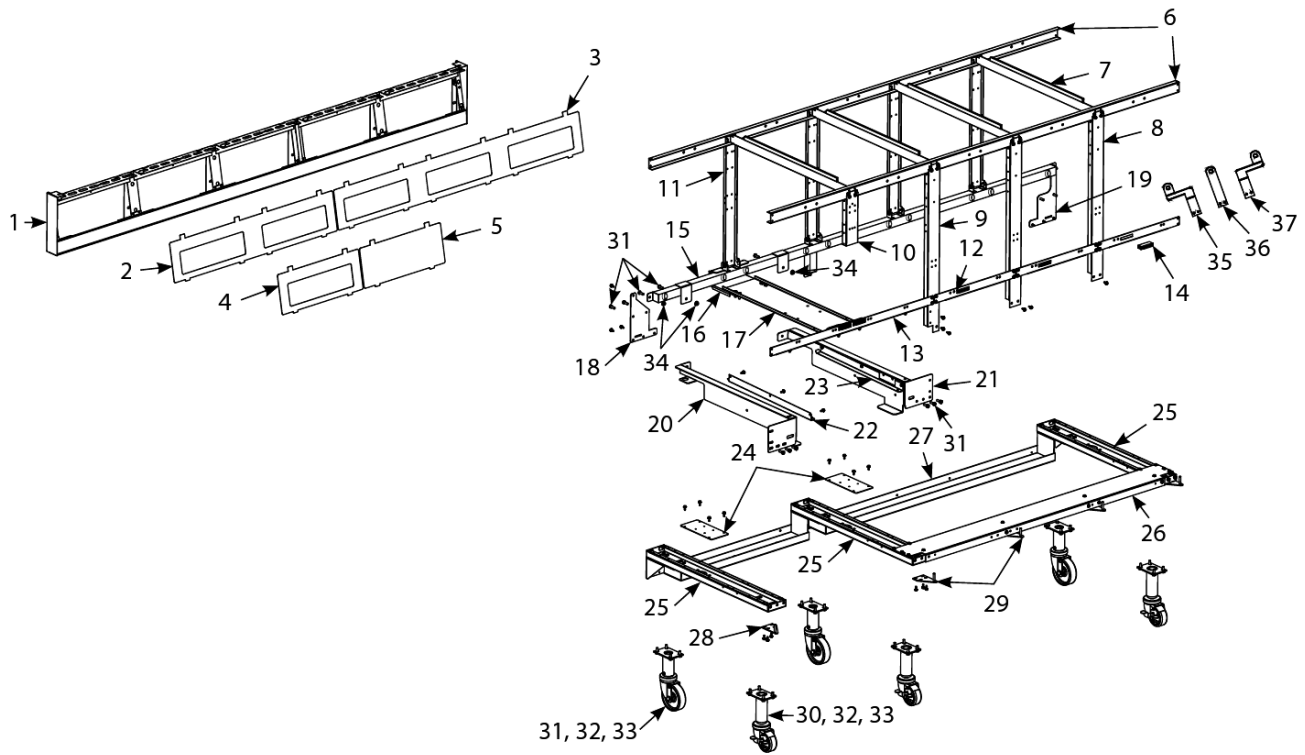
#	PART #	DESCRIPTION	QTY	Note
19a	8241689	Top Cap, Single Fryer	1	[2]
19b	8241357	Top Cap, 2-Station Fryer	1	
19c	8241690	Top Cap, 2-Station Fryer	1	[2]
19d	8234702	Top Cap, 3-Station Fryer	1	
19e	8235733	Top Cap, 3-Station Fryer	1	[2]
19f	8234704	Top Cap, 4-Station Fryer	1	
19g	8245734	Top Cap, 4-Station Fryer	1	[2]
19h	8234706	Top Cap, 5-Station Fryer	1	[3]
19i	8245735	Top Cap, 5-Station Fryer	1	[2]
20	2006582	Standoffs, Single Fryer	1	
20a	2006553	Water Level Probe Holder for 2006543 Water Level Probe	1	
20b	2006554	Standoffs, 3-Station Fryer	1	
20c	2006555	Standoffs, 4-Station Fryer	1	
20d	2006556	Standoffs, BIH552/MH552	1	
21	8233066	Cap-N-Splash Assemblies, BIH152/MH152 (New) (August 2001, serial higher than 0108 require top cap also)	1	
21a	8233067	Cap-N-Splash Assemblies, BIH252/MH252 (New) (August 2001, serial higher than 0108 require top cap also)	1	
21b	8233068	Cap-N-Splash Assemblies, BIH352/MH352 (New) (August 2001, serial higher than 0108 require top cap also)	1	
21c	8233070	Cap-N-Splash Assemblies, BIH452 (New) (August 2001, serial higher than 0108 require top cap also)	1	
21d	8233069	Cap-N-Splash Assemblies, BIH552 (New) (August 2001, serial higher than 0108 require top cap also)	1	
22	8261351	Nut Retainer, 0.25-20 Std. Fluecap	1	[4]
22a	8261351	Nut Retainer, 0.25-20 Std. Fluecap	10	[5]
23	8090171	Thumbscrew, 0.25-20 x 1.375-inch	1	[4]
24	8090402	Thumbscrew - 0.25"-20 x 0.5"	1	[6]
25	8090535	Nut, "T" 0.25-inch-20 x 0.4375 SS	1	[6]

**PART NOTES:**

- [1] - Left shown – move handle to bottom for Right
- [2] - for fryers mfd. After 3.15.06
- [3] - shown
- [4] - for use on standard fluecap
- [5] - for use on standard fluecap  
for basket hanger thumbscrew
- [6] - for use on Cap-N-Splash Assembly

# BIPH52-55 and MPH52-55 Series Gas Fryers

## Cabinetry - Filter Cabinet Bases, Casters, Framing, and Related Components



# BIPH52-55 and MPH52-55 Series Gas Fryers

## Cabinetry - Filter Cabinet Bases, Casters, Framing, and Related Components

#	PART #	DESCRIPTION	QTY	Note
1	1064303	Frame, Control Panel, Two-Station, Standard	1	
1a	1065221SP	Frame, Control Panel, Two Station Fryer	1	[1]
1b	1064304	Frame, Control Panel, Three-Station, Standard	1	
1c	1065018SP	Frame, Control Panel, Three Station Fryer	1	[1]
1d	1064305	Frame, Control Panel, Four-Station, Standard	1	
1e	1065019	Frame, Control Panel, Four Station Fryer	1	[1]
1f	1064306	Frame, Control Panel, Five-Station, Standard	1	
1g	1065020	Frame, Control Panel, Five Station Fryer	1	[1]
2	2105819	Bezel - Two-Controller	1	
3	2106698	Bezel, Three-Controller	1	
4	2105046	Bezel - One-Controller	1	
5	2105623	Bezel, Insert for Remote Single-Controller	1	
6	9007730	Brace, Top Cabinet, Two Station Fryer	1	
6a	9009430	Brace, Top Cabinet, Three Station Fryer	1	
6b	9009318	Brace, Top Cabinet, Four Station Fryer	1	
6c	2005474	Brace, Top Cabinet, Five Station Fryer	1	
7	2005478	Bracket	1	
8	2009217	Post, Cabinet Front	1	
9	2006031	Post, Filter Door	1	
10	2002235	Bracket, Component Box	1	
11	2006550	Post, Cabinet Rear	1	
12	2001953	Brace, Front Cabinet	1	
13	2006507	Support, Cross Cabinet	1	
14	8101105	Door Magnet - Vertical	1	
15	8102890	Manifold, BIPH52 Rear Flush Oil Return, Two-Station Fryer	1	
15a	8102891	Manifold, BIPH52 Rear Flush Oil Return, Three-Station Fryer	1	
15b	8102892	Manifold, BIPH52 Rear Flush Oil Return, Four-Station Fryer	1	
15c	8102893	Manifold, BIPH52 Rear Flush Oil Return, Five-Station Fryer	1	
16	2002213	Bracket, Rear Bridge Support	1	
17	2009818	Bridge, Filter Pump	1	
18	2006326	Gusset, Left Rear Corner	1	
19	2007031	Gusset, Right Rear Corner	1	
20	2019467	Support, Left Filter Rail	1	
21	2029467	Support, Right Filter Rail	1	
22	8234651	Slide, Filter Pan Lid Left	1	
23	8234652	Slide, Filter Pan Lid Right	1	
24	2002102	Brace, Side Channel	1	
25	8234653	Channel, Side Base	1	
26	2006609	Contactora - 230V/60 Hz/1 Ph	1	
26a	2006610	Channel, Front Base (not used in two-station fryers), Four-Station	1	
26b	2005473	Channel, Front Base (not used in two-station fryers), Five-Station	1	
27	8234510	Channel, Rear Base, Two-Station	1	
27a	8234630	Channel, Rear Base, Three-Station	1	
27b	8234629	Channel, Rear Base, Four-Station	1	
27c	8234628	Channel, Rear Base, Five-Station	1	

# BIPH52-55 and MPH52-55 Series Gas Fryers

## Cabinetry - Filter Cabinet Bases, Casters, Framing, and Related Components

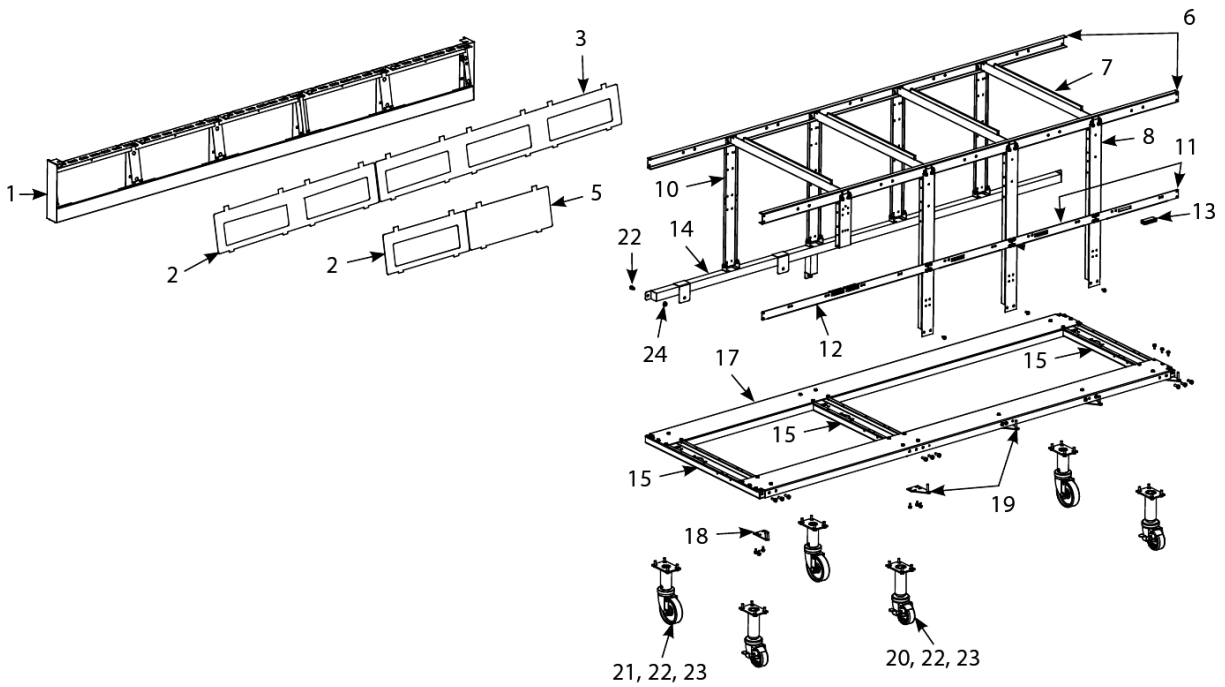
#	PART #	DESCRIPTION	QTY	Note
28	8234732	Hinge, Lower Left	1	
29	8234733	Hinge, Lower Right	1	
29a	2005478	Bracket	1	
30	8100944	Caster 3" with Brake	1	[2]
31	8100327	Caster 4" without Brake	1	[3]
32	8090953	Bolt, 0.25-20 x 0.75-inch Hex Head	1	
33	8090191	Washer, Lock 0.25 Spring ZP	1	
34	8261368	Nut - 0.25-20 Serrated Flange	1	
35	2016720	Mount, Rear Flush Rod Offset, Left	1	
36	2006697	Mount, Rear Flush Rod Holder, Center	1	
37	2026720	Mount, Rear Flush Rod Offset, Right	1	
38	2006036	Base Shield	1	

### PART NOTES:

- [1] - mfd. After 3.15.06
- [2] - 3-inch wheel
- [3] - 4-inch wheel

# BIPH52-55 and MPH52-55 Series Gas Fryers

## Cabinetry - Non-Filter Cabinet Bases, Casters, Framing, and Related Components



# BIPH52-55 and MPH52-55 Series Gas Fryers

## Cabinetry - Non-Filter Cabinet Bases, Casters, Framing, and Related Components

#	PART #	DESCRIPTION	QTY	Note
1	1064302	Frame, Control Panel, Single-Station, Standard	1	
1a	1065016	Frame, Control Panel - Single	1	[1]
1b	1064303	Frame, Control Panel, Two-Station, Standard	1	
1c	1065221SP	Frame, Control Panel, Two Station Fryer	1	[1]
1d	1064304	Frame, Control Panel, Three-Station, Standard	1	
1e	10655018SP	Frame, Control Panel, Three-Station, Standard	1	[1]
1f	1064305	Frame, Control Panel, Four-Station, Standard	1	
1g	1065019	Frame, Control Panel, Four Station Fryer	1	[1]
1h	1064306	Frame, Control Panel, Five-Station, Standard	1	
1i	1065020	Frame, Control Panel, Five Station Fryer	1	[1]
2	2105819	Bezel - Two-Controller	1	
3	2106698	Bezel, Three-Controller	1	
4	2105046	Bezel - One-Controller	1	
5	2105623	Bezel, Insert for Remote Single-Controller	1	
6	2005498	Brace, Cabinet Top, Single Fryer	1	
6a	9007730	Brace, Top Cabinet, Two Station Fryer	1	
6b	9009430	Brace, Top Cabinet, Three Station Fryer	1	
6c	9009318	Brace, Top Cabinet, Four Station Fryer	1	
6d	2005474	Brace, Top Cabinet, Five Station Fryer	1	
7	2005478	Bracket	1	
8	2006614	Post, Cabinet Front	1	
9	2002235	Bracket, Component Box	1	
10	2006550	Post, Cabinet Rear	1	
11	2001953	Brace, Front Cabinet	1	
12	2006507	Support, Cross Cabinet	1	
13	8101105	Door Magnet - Vertical	1	
14	8233223	Manifold, Rear (not present in single fryers), Two-Station	1	
14a	8234691	Manifold, Rear (not present in single fryers), Three-Station	1	
14b	8234693	Manifold, Rear (not present in single fryers), Four-Station	1	
14c	8234694	Manifold, Rear (not present in single fryers), Five-Station	1	
15	8234653	Channel, Side Base	1	
16	2006616	Channel, Front Base, Single Fryer	1	[2]
16a	2006623	Channel, Front Base, Two-Station	1	[2]
16b	2006624	Channel, Front Base, Three-Station	1	[2]
16c	2006625	Channel, Front Base, Four-Station	1	
16d	2006627	Five-Station	1	
17	2006626	Channel, Rear Base, Four-Station	1	
17a	2006628	Channel, Rear Base, Five-Station	1	
18	8234732	Hinge, Lower Left	1	
19	8234733	Hinge, Lower Right	1	[3]
19a	2005478	Bracket	1	
20	8100944	Caster 3" with Brake	1	[4]
21	8100327	Caster 4" without Brake	1	[5]
22	8090953	Bolt, 0.25-20 x 0.75-inch Hex Head	1	
23	8090191	Washer, Lock 0.25 Spring ZP	1	
24	8261368	Nut - 0.25-20 Serrated Flange	1	



# BIPH52-55 and MPH52-55 Series Gas Fryers

## Cabinetry - Non-Filter Cabinet Bases, Casters, Framing, and Related Components

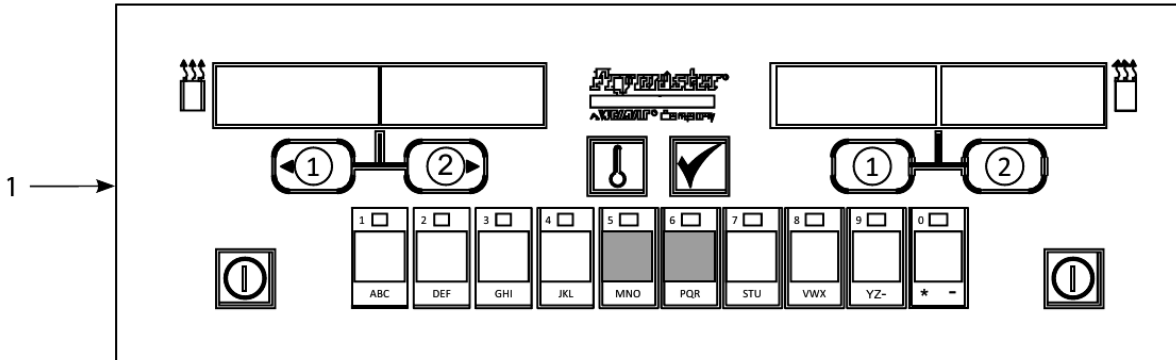
#	PART #	DESCRIPTION	QTY	Note
---	--------	-------------	-----	------

**PART NOTES:**

- [1] - mfd. After 3.15.06
- [2] - also used as rear base channel in single-station fryers
- [3] - attach to Bracket in 3-, 4-, & 5-station fryers
- [4] - 3-inch wheel
- [5] - 4-inch wheel

# BIPH52-55 and MPH52-55 Series Gas Fryers

## Controllers and Associated Components



# BIPH52-55 and MPH52-55 Series Gas Fryers

## Controllers and Associated Components

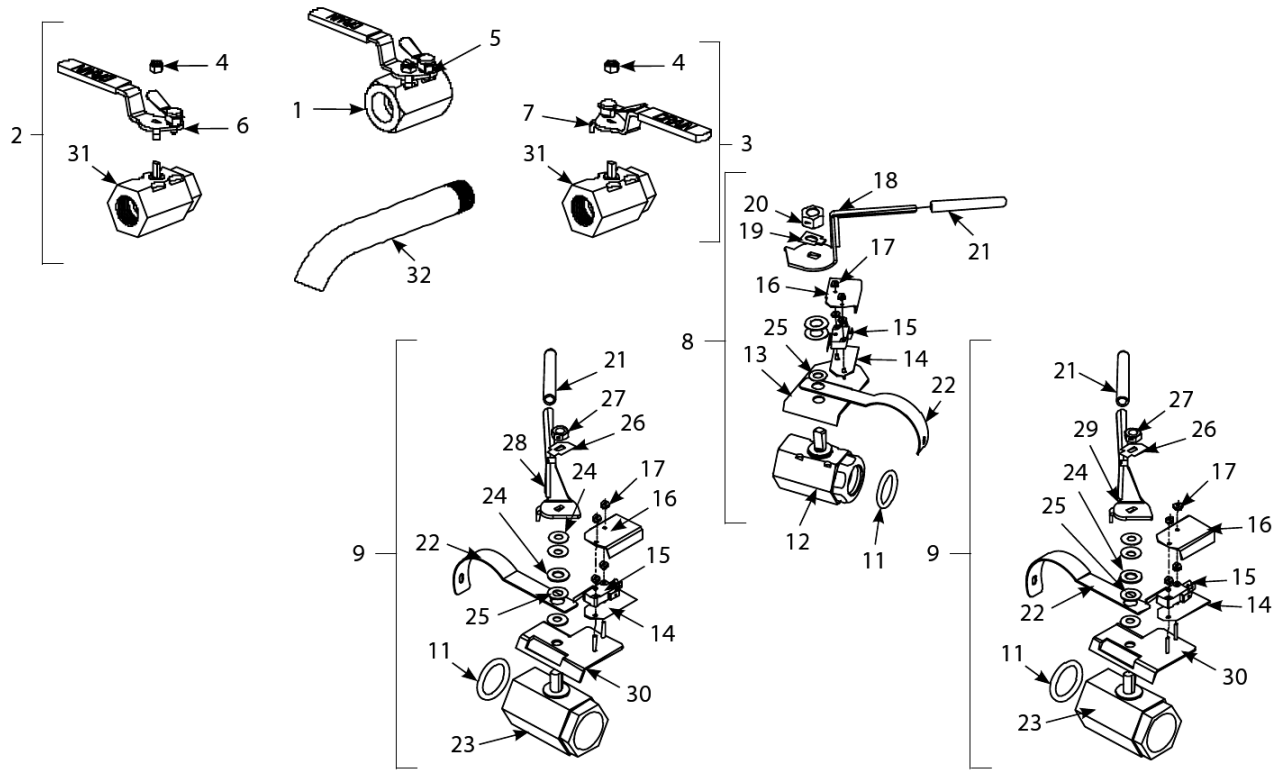
#	PART #	DESCRIPTION	QTY	Note
1	1061269	Replacement Computer, Non-CE Domestic M2000		[1]
1a	1060672	Replacement Computer - CE		[2]
1b	1065950	Computer, McDonald's M2000 Gas Fryer, Full Vat		[3]
2	8262458	Speaker - 4 Watts		

### PART NOTES:

- [1] - Domestic U.S. Can also be programmed for Dual Vat.
- [2] - CE Can also be programmed for Dual Vat.
- [3] - CE Can also be programmed for Dual Vat Australia Only

# BIPH52-55 and MPH52-55 Series Gas Fryers

## Drain, Filtration, and Oil Return System Components - Drain Valves and Associated Components



## BIPH52-55 and MPH52-55 Series Gas Fryers

### Drain, Filtration, and Oil Return System Components - Drain Valves and Associated Components

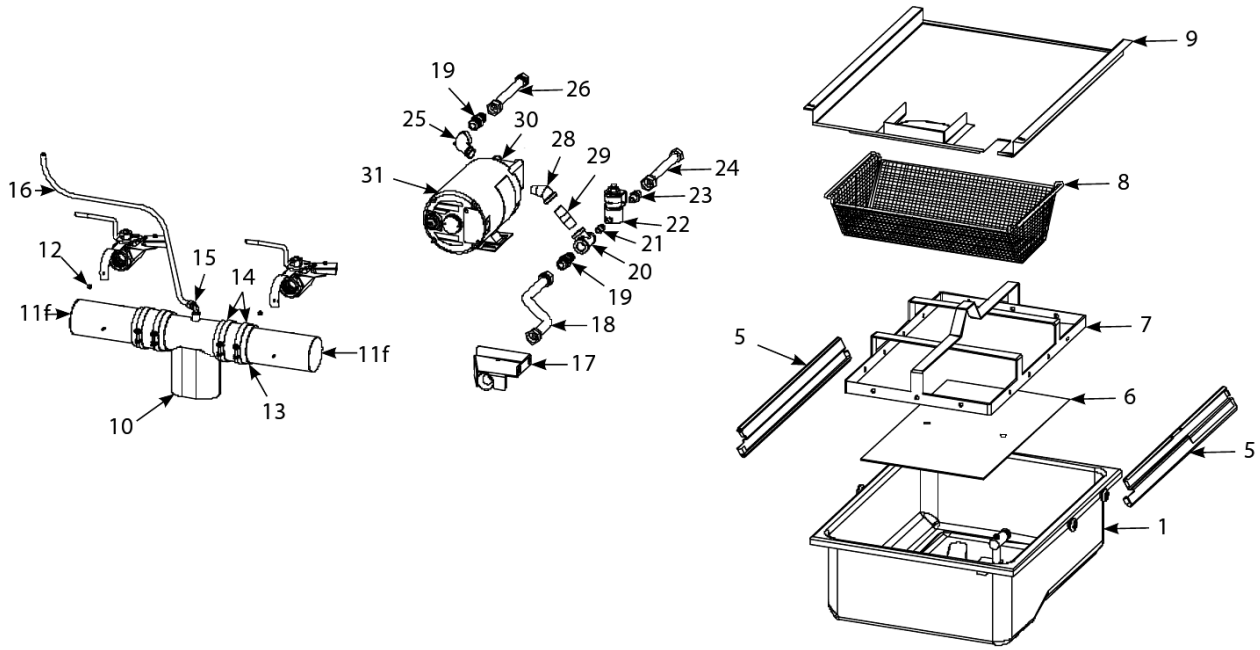
#	PART #	DESCRIPTION	QTY	Note
1	8101569	Valve, 1.25-inch, Non-filter, Full-vat Drain	1	[1]
1a	8101427	Handle, Drain Valve	1	
2	8067915SP	Valve, 1-inch, Non-filter, Dual-vat, Left Drain	1	[2]
3	8067916SP	Valve, 1-inch, Non-filter, Dual-vat, Right Drain	1	[2]
4	8090589	Components, Nut, 0.5-inch Lock	1	[3]
5	8101427	Handle, Drain Valve	1	
6	8101568	Handle, Drain Valve	1	
7	8101567	Handle with Lock, Drain Valve (for Right Dual Vat MH52 Valve)	1	
8	1063760SP	Full-Vat Drain Valve Assembly	1	[2]
9	1065607SP	Valve Assembly, 1-inch Left Dual-Vat w/Filter Drain	1	[2]
10	1065606SP	Valve Assembly, 1-inch Right Dual-Vat w/Filter Drain	1	[2]
11	8160135	O-ring	1	
12	8101018	Drain Valve, 1.25", Left	1	
13	8068137	Bracket Assembly, Full-Vat Drain Safety Switch	1	
14	8160220	Insulation, Microswitch	1	
15	8072103	Microswitch	1	
16	9012348	Cover, Dual-Vat Left Drain Safety Switch	1	
17	8261366	Nut - #4-40 Keps Hex	25	
18	8241602	Handle, Valve, Full-vat	1	
19	9002936	Retainer Nut (FV)	1	
20	8090540	Nut, Lock 0.5-inch-13 Hex 2-Way ZP	1	
21	8160639	Cap, Vinyl Red	1	
22	2006496	Support, Drain Tube	1	
23	8101114	Drain Valves, Dual-vat, 1-inch Drain Valve	1	
24	8090196	Washer, 0.375-inch SAE Flat	1	
25	8101165	Washer, Teflon Drain Valve	1	
26	9002934	Retainer, Dual-Vat Drain Valve Nut	1	
27	8090539	Nut, 0.375-16 2-Way Lock	1	
28	8241637	Handle, Valve, Dual-vat, Left	1	
29	8241636	Handle, Valve, Dual-vat, Right	1	[4]
30	1062671	Bracket Assembly, Dual-Vat Left Drain Safety Switch	1	
31	8101338	Valve, 1-inch, Universal Ball	1	
32	8130188	Drain Nipple, Extended	1	[5]
32a	8130276	Drain Extension, 1-inch, Dual-vat	1	[6]

**PART NOTES:**

- [1] - includes handle
- [2] - complete assembly
- [3] - used on non-filter drain valves
- [4] - Must order item 16 and item 30 to fit
- [5] - 1.25-inch
- [6] - 1-inch

# BIPH52-55 and MPH52-55 Series Gas Fryers

## Drain, Filtration, and Oil Return System Components - Filtration System Components



# BIPH52-55 and MPH52-55 Series Gas Fryers

## Drain, Filtration, and Oil Return System Components - Filtration System Components

#	PART #	DESCRIPTION	QTY	Note
1	1081204SP	Pan, One-Piece Filter	1	[1]
2	8261980	Service Filter Pan	1	
3	8233930SP	Pan Assembly, Filter	1	
3a	8130568	Plug, 0.125" SS NPT, Sq-Head	1	
3b	8261392	O-Ring	5	[2]
3c	8102198	Roller, Filter Pan and Rail	1	
3d	8261372	Nut Grip 0.25-inch 0.25-20 Hex NP	1	
4	8261979	Filter Pan Roller Kit	1	
5	8102012	Rail Set, Filter Pan Roller	1	[3]
6	2002240	SanaGrid Filter Screen, Standard Size Filter Pan	1	
7	8102183	Hold-Down Ring	1	[4]
7a	8102091	Hold Down Ring	1	[5]
8	8102874	Crumb Tray, Standard Size Filter Pan 3, 4 and 5 Vat	1	
9	8235334	Lid, Filter Pan, FMPH	1	
10	8234678	Tube, 3-inch Center Drain	1	[6]
10a	8234708	Closed One End	1	
11	8234638	Drain Tube, Right End Long, Dual-Vat 3"	1	[7]
11a	8234640	Drain Tube, Left/Right Open Long, Dual-Vat 3"	1	[6]
11b	8234624	Drain Tube, Left/Right End Short, Dual-Vat 3"	1	[7]
11c	8234642	Drain Tube, Left/Right Open Short, Dual-Vat 3"	1	[6]
11d	8234639	Drain Tube, Long Full-Vat Left Open/Right End Closed	1	[7]
11e	8234641	Drain Tube, Long Full-Vat Open Both Ends	1	[6]
11f	8234625	Drain Tube, Short Full-Vat Left Open/Right End Closed	1	[8]
11g	8234643	Drain Tube, Full-Vat, Short, Open Both Ends	1	[6]
11h	2006473	Drain Tubes, Spreader, Open Long	1	[9]
11i	2006474	Drain Tubes, Spreader, Open Short	1	[9]
12	8090247	Nut - #8-32 Keps Hex	1	
13	8160729	Sleeve, Drain Connector	1	
14	8090969	Clamp 3"	1	
15	8102493	Elbow, 90° 0.125-inch NPT x 0.25-inch Quick Connect	1	
16	8111071	Tube, 0.25-inch OD Teflon Manifold Vent	1	
17	8233879	Suction Tube	1	
18	8101055	Flexline - 0.625" OD x 11.5" L	1	
19	8101668	Male Adaptor - 0.625" OD x 0.5"	1	
20	8130530	Tee, Reducing 0.5-inch x 0.25-inch x 0.5-inch	1	
21	8130838	Nipple - 0.25" NPT	1	
22	8072484	Solenoid Valve - 0.25"	1	
23	8102773	Adaptor, 0.25-inch NPT to 0.5-inch NPT	1	
24	8102787	Flexline - 0.5" OD x 5" L Pump to Oil Return Manifold	1	
25	8130165	Elbow - 0.5" x 90° NPT Street	1	
26	8101680	Flexline - 0.625" OD x 6.5" L	1	
27	8130265	Nipple - 0.5" x 2.5" NP	1	
28	8130342	Elbow, 0.5-inch 45° Street	1	
29	8130298	Nipple, 0.5" x 2.00" NPT BM Pipe	1	
30	8261264	Pump Kit - 4 GPM	1	
31	8261785	Motor and Gasket Kit - 100V/50-60 Hz	1	

# BIPH52-55 and MPH52-55 Series Gas Fryers

## Drain, Filtration, and Oil Return System Components - Filtration System Components

#	PART #	DESCRIPTION	QTY	Note
31a	8261712	Motor and Gasket Kit - 115V/50-60 Hz	1	
31b	8261756	Motor and Gasket Kit - 208V/50-60 Hz	1	
31c	8261270	Motor and Gasket Kit - 220-240V/50-60 Hz	1	
31d	8261755	Motor and Gasket Kit - 250V/50-60 Hz	1	
31e	8160093	Gasket - Pump/Motor	1	

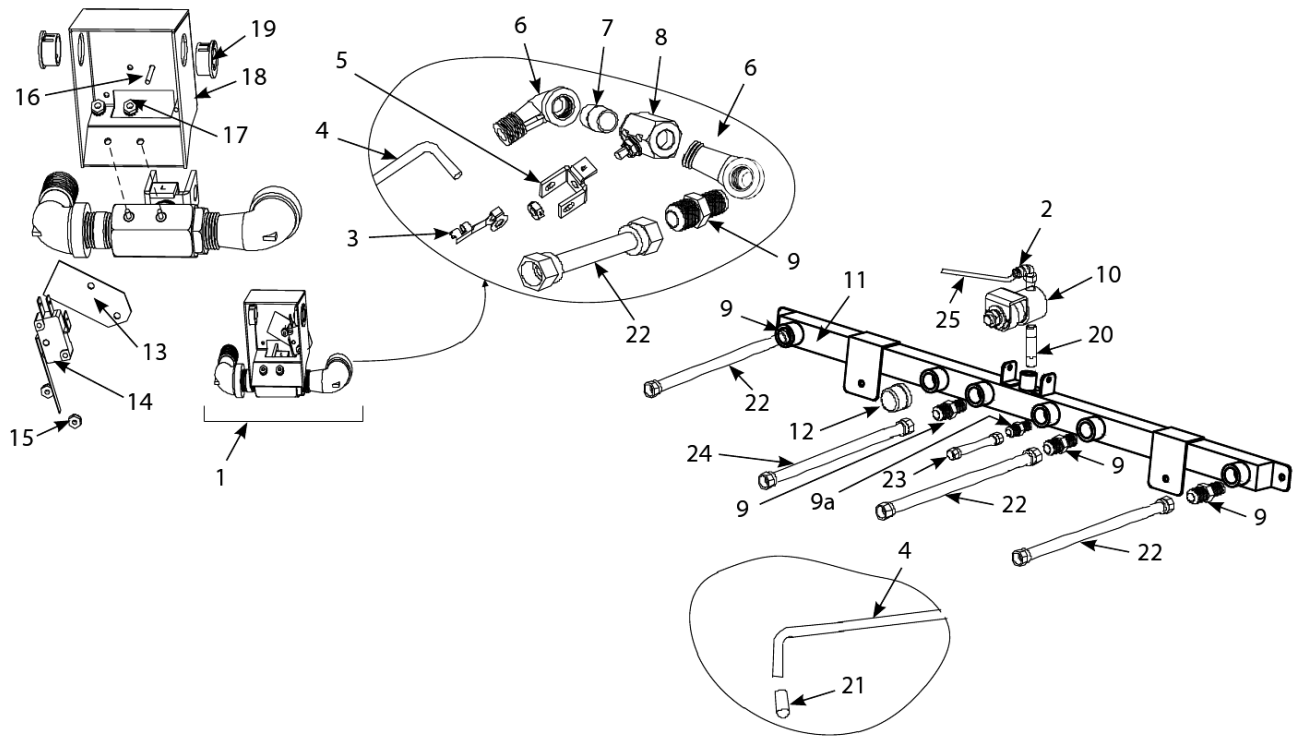
### PART NOTES:

- [1] - incl. O-rings, rollers, nuts & crumb tray
- [2] - two required
- [3] - includes one left and one right
- [4] - 11.20-inch X 19.10-inch
- [5] - 13.47-inch X 21.41-inch
- [6] - Open Both Ends
- [7] - one end closed
- [8] - one end closed illustrated
- [9] - open both ends, no drain valve connection



# BIPH52-55 and MPH52-55 Series Gas Fryers

## Drain, Filtration, and Oil Return System Components - Rear Flush Oil Return Line Components



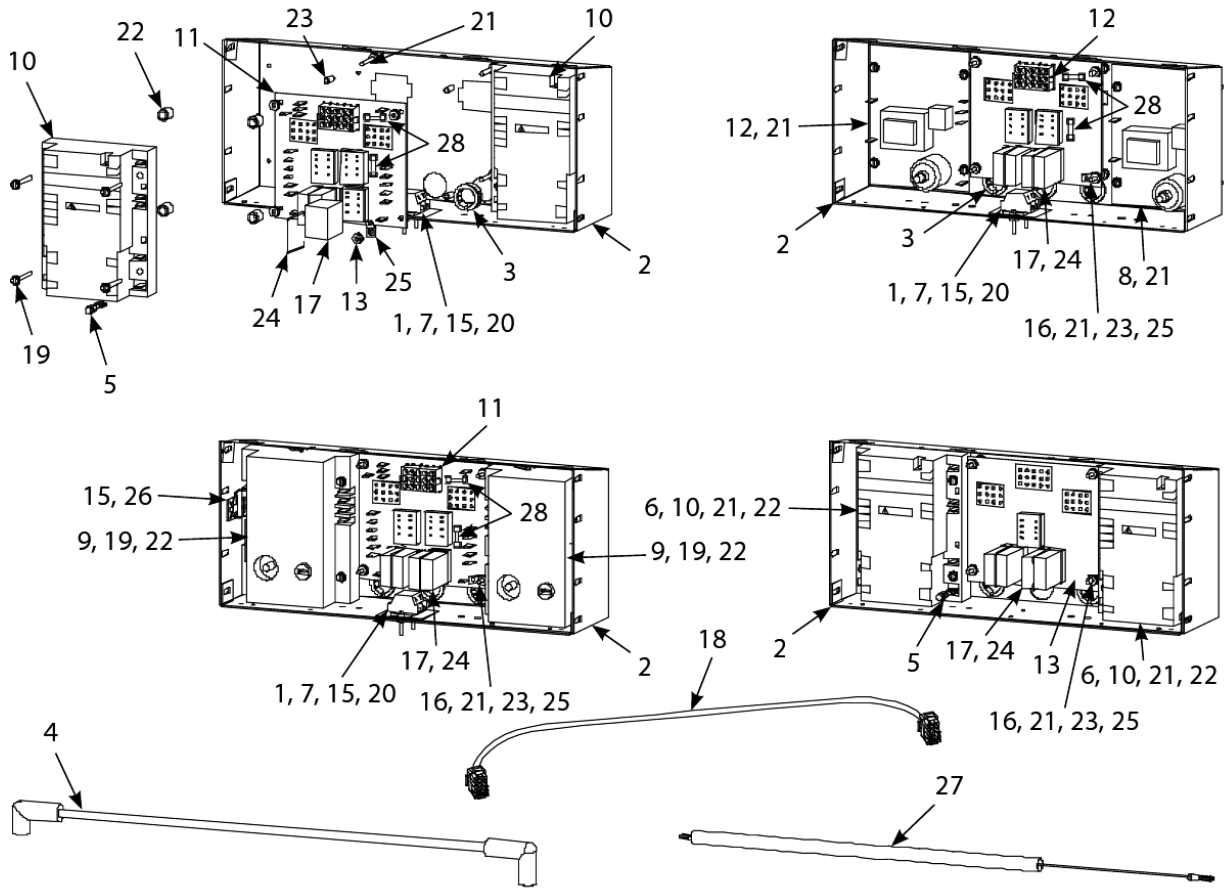
## BIPH52-55 and MPH52-55 Series Gas Fryers

### Drain, Filtration, and Oil Return System Components - Rear Flush Oil Return Line Components

#	PART #	DESCRIPTION	QTY	Note
1	1063452SP	Valve Assembly, Microswitch and II Valve, Valve Rear Flush Assembly, Left Side	1	
1a	1063453SP	Valve Assembly, Microswitch and II Valve, Valve Rear Flush Assembly, Right Side	1	
2	8102493	Elbow, 90° 0.125-inch NPT x 0.25-inch Quick Connect	1	
3	8090601	Clip, Clevis	1	
4	2116701	Shaft, Rear Flush Valve, For use in Left oil return valve assemblies.	1	
4a	2126701	Rod, Handle Right RF	1	
5	9012772	Handle, Valve Rear Flush LT	1	
5a	9022772	Handle, Valve Rear Flush RT	1	
6	8130165	Elbow - 0.5" x 90° NPT Street	1	
7	8130087	Nipple, 0.5-inch NPT x 1.5-inch (3.8 cm)	1	
8	8102201	Valve, Return 0.5" Ball LT	1	
8a	9002935	Retainer, Nut Oil Return Valve	1	
9	8101668	Male Adaptor - 0.625" OD x 0.5"	1	
9a	8102786	Adaptor, 0.5-inch Flare x 0.5 -inch NPT	1	
10	8072484	Solenoid Valve - 0.25"	1	
11	8102890	Manifold, BIPH52 Rear Flush Oil Return, Two-Station Fryer	1	
11a	8102891	Manifold, BIPH52 Rear Flush Oil Return, Three-Station Fryer	1	
11b	8102892	Manifold, BIPH52 Rear Flush Oil Return, Four-Station Fryer	1	
11c	8102893	Manifold, BIPH52 Rear Flush Oil Return, Five-Station Fryer	1	
12	8130463-FRY	Plug - 0.5" NPT	1	
13	8160220	Insulation, Microswitch	1	
14	8074101	Switch, Micro	1	
15	8261366	Nut - #4-40 Keps Hex	25	
16	8261359	Screw - #4-40 x 0.75" Slotted Round Head	25	
17	8090250	Nut, 6-32 Keps Hex	1	
18	2008745	Cover, Microswitch Rear Flush	1	
19	8070125	Bushing, 0.50-inch	1	
20	8130700	Nipple, 0.25-inch NPT x 3.00-inch	1	
21	8160643	Grip, Oil Return Valve Handle	1	
22	8101067	Flexline - Oil Return - 0.625" OD x 8.5" L	1	
23	8102787	Flexline - 0.5" OD x 5" L Pump to Oil Return Manifold	1	
24	8101680	Flexline - 0.625" OD x 6.5" L	1	
25	8111071	Tube, 0.25-inch OD Teflon Manifold Vent	1	

# BIPH52-55 and MPH52-55 Series Gas Fryers

## Electronics and Electrical Components - Component Boxes



# BIPH52-55 and MPH52-55 Series Gas Fryers

## Electronics and Electrical Components - Component Boxes

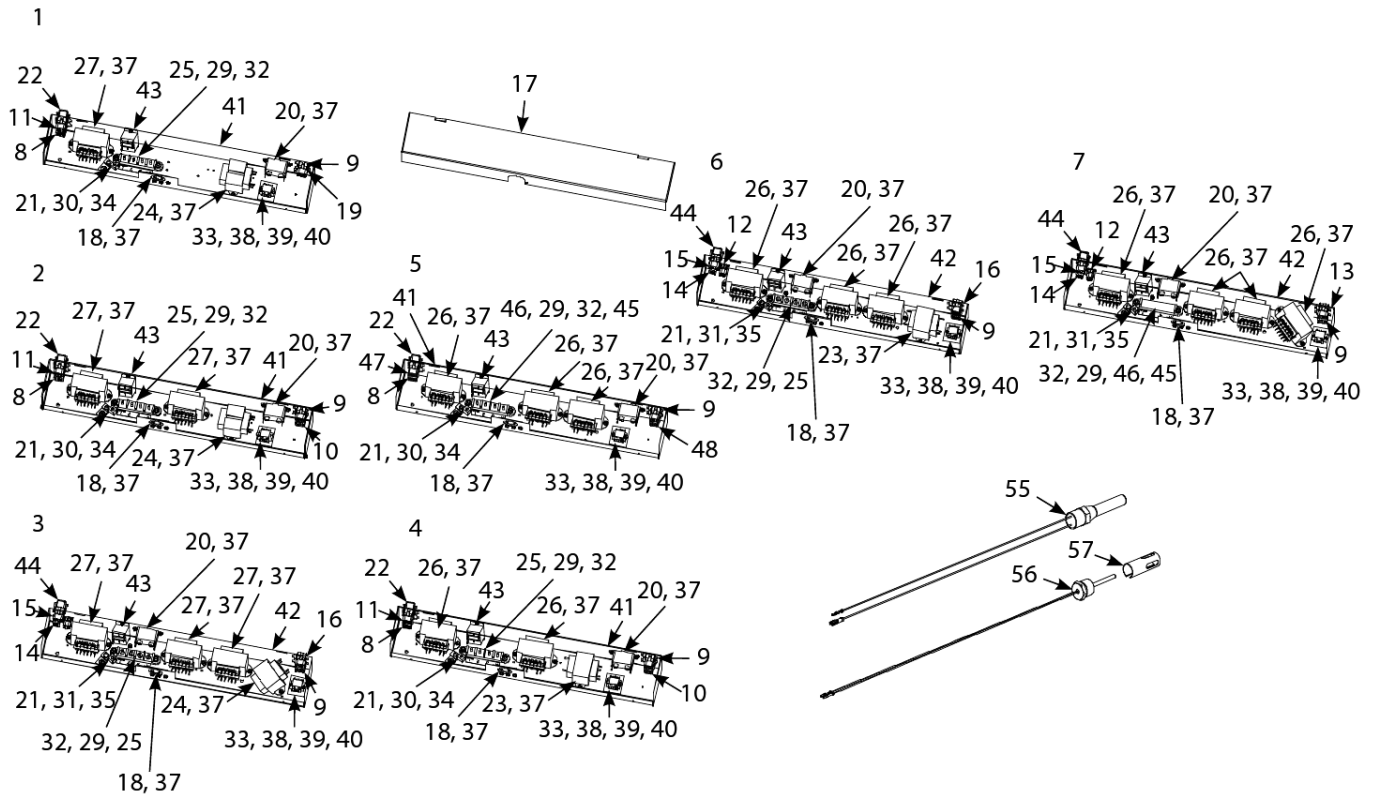
#	PART #	DESCRIPTION	QTY	Note
1	8101164	Block, One-Piece Screwless Terminal	1	
2	2005996	Box Assembly, One-Piece Component	1	
3	8071926	Bushing, .875-inch Split	1	
4	8075008	Ignition Cable - 21"	1	
4a	8262024	Ignition Cable w/Rajah	1	
4b	8261721	Ignition Cable w/ Rajah	1	
5	8073484	Connector, Rajah	1	[1]
6	1060531SP	Fuse Assembly, Inline	1	
7	8160217	Insulation, Terminal Block Paper	1	
8	8263271	Ignition Module	1	
9	8263271	Ignition Module	1	[2]
10	8073366	Ignition Module, Dual-Spark Full-Vat	1	[3]
10a	8073365	Ignition Module, Single-Spark Dual-Vat	1	[3]
11	8262264	Interface Board Kit SMT	1	
11b	8074330	Speaker Adapter Harness SMT	1	
11c	8074343	Wire Harness, SMT Interface Board to Ignition Module	1	
12	8262264	Interface Board Kit SMT	1	
13	8064973	Interface Board, Australia	1	
14	8071359	Mount, Ty-Wrap	1	
15	8261366	Nut - #4-40 Keps Hex	25	
16	8090250	Nut, 6-32 Keps Hex	1	
17	8070833	Relay, DPDT 5A 12VDC Latch	1	
18	8062071	Cable, Computer/Controller to Interface Board	1	
19	8090441	Screw, 8 x 1.5-inch Hex Washer Head	1	
20	8261359	Screw - #4-40 x 0.75" Slotted Round Head	25	
21	8090098	Screw, 6-32 x 1.25-inch Slotted Round Head	1	
22	8261346	Spacer, Ignition Module	10	
23	8102763	Spacer, Interface Board	1	
24	8102243	Spring, Relay Retaining	1	
25	8261337	Tab, 0.25-inch Terminal	5	
26	8071948	Ty-Wrap	1	
27	8066085SP	Wire Assembly, Ignitor	1	
28	8073843	Fuse 3A 250V Domestic	1	
28a	8073293	Fuse 5A 125V	1	
29	8071200	Ignition Cable - 27" L	1	
29a	8075009	Ignition Cable - 19" L	1	
30	8262458	Speaker - 4 Watts	1	

### PART NOTES:

- [1] - non fused ignition modules
- [2] - except Australia, Canada, HK, Mexico
- [3] - U.S., Canadian, HK, and Mexican units

# BIPH52-55 and MPH52-55 Series Gas Fryers

## Electronics and Electrical Components - Transformer Boxes, High-Limit Thermostat and Temperature



## BIPH52-55 and MPH52-55 Series Gas Fryers

### Electronics and Electrical Components - Transformer Boxes, High-Limit Thermostat and Temperature

#	PART #	DESCRIPTION	QTY	Note
1	1061380	Box Assembly, Transformer, 100-120V FMPH152/155, FMPH352/355, FMPH452/455	1	
2	1063818	Box Assembly, Transformer, 100-120V BIPH 252/255, BIPH 452/455, FMPH252/255	1	
3	1064888	Box Assembly, Transformer, 100-120V BIPH 352/355	1	
4	1063819	Box Assembly, Transformer, 208-240V BIPH 252/255 and BIPH 452/455 CE/Non-CE Export	1	
5	1063817	Box Assembly, Transformer, 250V BIPH 252 and BIPH 452 CE/Non-CE Export	1	
6	1063824	Box Assembly, Transformer, 208-240V BIPH 352/355 CE/Non-CE Export	1	
7	1063823	Box Assembly, Transformer, 250V BIPH 352/355 CE/Non-CE Export	1	
8	1063820SP	Cable Assembly, Transformer Box #1 Position	1	
9	1063821SP	Cable Assembly, Transformer Box #2 GL230 and 330	1	
10	1061011SP	Cable Assembly, Transformer Box Line	1	
11	1061016SP	Cable Assembly, Transformer Box to Filter Pump	1	
12	1063827SP	Cable Assembly, Transformer Box #1 GL330	1	
12a	1064898	Cable Assembly, Transformer Box #1	1	[1]
13	1064990	Cable Assembly, Transformer Box Line	1	
14	1063825SP	Cable Assembly, Transformer Box #3 GL330	1	
15	1063826SP	Cable Assembly, Transformer Box to Filter Pump	1	
16	1063316	Cable Assembly, Transformer Box Line	1	
17	2001415	Cover, Transformer Box	1	
18	2006721	Plate, Strain Relief	1	
19	2002318	Cover, Transformer Box Cable Plate	1	
20	8070012	Filter Relay - 18A 24VAC	1	
21	8070070	Terminal, Ground Lug	1	
22	8070155	9-Pin Male	1	
23	8070680	Transformer, 208V, 50/60Hz -24V 20VA	1	
24	8070800	Transformer, 100-120V/24V 50VA Filter and MIB	1	
24a	8074978	Transformer - Dual Voltage 100-120V/12V 30VA /24V 50VA	1	[2]
25	8071973	Terminal, Post	1	
26	8075129	Transformer - Dual Voltage 208-240V	1	
27	8074978	Transformer - Dual Voltage 100-120V/12V 30VA /24V 50VA	1	
28	8090052	Nut, 10-24 Hex	1	
29	8261362	Nut - 0.25"-20 Hex	10	
30	8261363	Screw - #8-32 x 0.5" NP	25	
31	8090123	Screw - #10 x 0.75" - Slot Head	1	
32	8261389	Screw - 0.25"-20 x 0.75" Hex Head ZP	10	
33	8261366	Nut - #4-40 Keps Hex	25	
34	8090247	Nut - #8-32 Keps Hex	1	
35	8261376	Nut - #10-32 Keps Hex	10	
36	8261359	Screw - #4-40 x 0.75" Slotted Round Head	25	
37	8090360	Screw, 8 x 0.375-inch Hex Washer Slot Head	1	
38	8090656	Screw, 4-40 X 0.375-inch Slotted Round Head	1	
39	8101164	Block, One-Piece Screwless Terminal	1	
40	8160217	Insulation, Terminal Block Paper	1	

# BIPH52-55 and MPH52-55 Series Gas Fryers

## Electronics and Electrical Components - Transformer Boxes, High-Limit Thermostat and Temperature

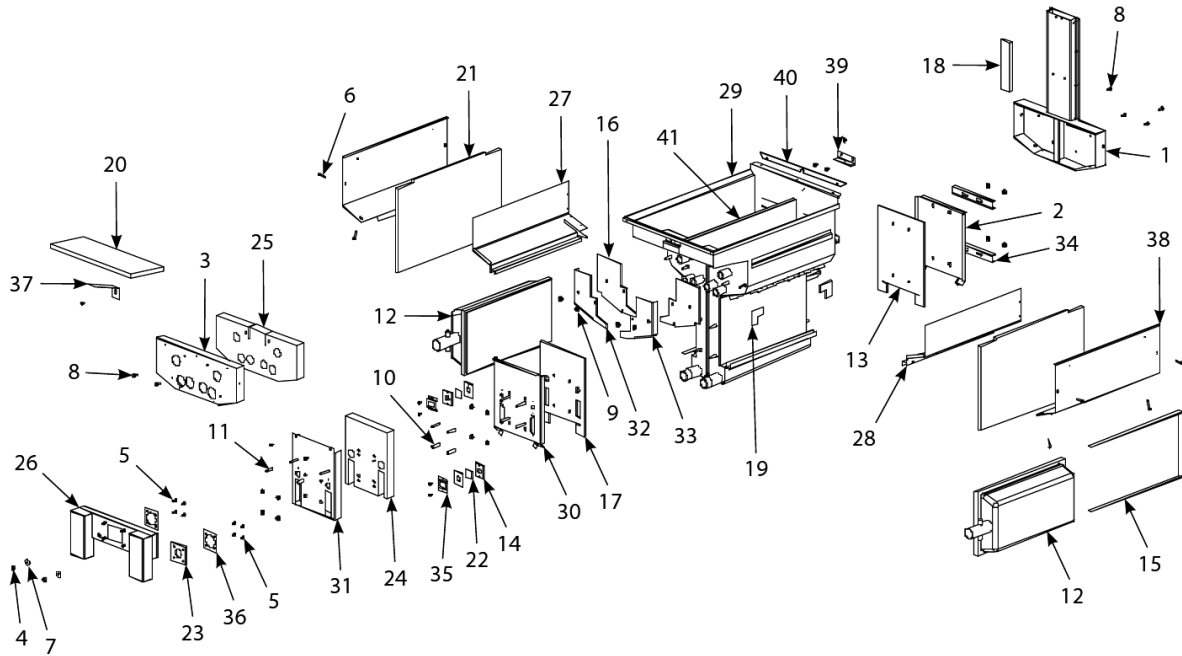
#	PART #	DESCRIPTION	QTY	Note
41	8235553	Box, Transformer BIPH252, 452	1	
42	8241301	Box, Transformer BIPH352, 552	1	
43	8071683	Relay, 12VDC Secondary Blower Fan to cool frypot	1	
44	8070157	6-Pin Male	1	
45	8160219	Paper, 3 Place Terminal Block Insulating	1	
46	8101163	Block, 3-Position Push-In Terminal	1	
47	1064894	Cable Assembly, Transformer Box to Filter Pump	1	
48	1064893	Cable Assembly, Transformer Box Line	1	
49	WIR0623	Wire Assembly, PH52 Hood Relay	1	
50	WIR0634	Wire Assembly, FPP50 Transformer/Filter Box	1	[3]
51	WIR0635	Wire Assembly, FPPH350 Transformer Filter Box	1	[4]
52	WIR0439SP	Wire Assembly, Transformer Box	1	[5]
53	WIR0447SP	Wire Assembly, Transformer Box	1	[6]
54	WIR0580	Wire Assembly, Transformer Box	1	[7]
55	8261177	Thermostat, High-Limit 425°F/218°C	1	
56	8064206	Probe Assembly, Temperature	1	
57	2100681	Probe Guard	1	

### PART NOTES:

- [1] - On Box 7
- [2] - On Box 3
- [3] - used in Item 5
- [4] - used in Item 7
- [5] - used in Items 2, 4, and 5
- [6] - used in Item 1
- [7] - used in Item 3

# BIPH52-55 and MPH52-55 Series Gas Fryers

## Frypots and Associated Components - Dual-Vat Frypot Components





# BIPH52-55 and MPH52-55 Series Gas Fryers

## Frypots and Associated Components - Dual-Vat Frypot Components

#	PART #	DESCRIPTION	QTY	Note
1	1061018SP	Flue Assembly, Dual Vat	1	
2	2000941	Back, Dual Vat Combustion Chamber	1	
3	2002229-ORA	Low Pressure Cut-out Switch	1	
4	8261372	Nut Grip 0.25-inch 0.25-20 Hex NP	10	
5	8090360	Screw, 8 x 0.375-inch Hex Washer Slot Head	1	
6	8090362	Screw, 8 x 1.25-inch Hex Washer Head Drill Point	1	
7	8261383	Washer, 0.75-inch O.D. x 0.25-inch I.D. ZP	5	
8	8090500	Screw, 10 x 0.5-inch Hex Washer Head 410 SS	1	
9	8090804	Nut, 0.25- inch - 20 Keps Hex	1	
10	8261340	Spacer, .25-inch x 1.187-inch	10	
11	8100500	Spacer, .25-inch x .9375-inch	1	
12	8261072	Kit, Burner Replacement, Natural and Propane Gas	1	
13	8120354	Burner Insulation Kit Dual Vat, Insulation, Full Vat Rear Combustion Chamber	1	
14	8120356	Insulation, Burner Sight Glass	1	
15	8120357	Insulation, HE Burner	1	
16	8120404	Insulation, Frypot Seal	1	
17	8120458	Burner Insulation Kit Dual Vat, Insulation, Full Vat Inner Combustion Chamber	1	
18	8120688	Insulation, Flue Collection	1	
19	8120706	Insulation, Upper Burner Rail	1	
20	8120993	Insulation, Frypot Upper	1	
21	8121029	Insulation, Combustion Chamber Side	1	
22	8140048SP	Glass, Burner Sight	1	
23	8160057	Gasket, Plenum	1	
24	8160558	Insulation, Dual Vat Combustion Chamber Outer Lower	1	
25	8160559	Insulation, Dual Vat Frypot Outer Front	1	
26	8230970	Plenum, Dual-Vat	1	
27	8232822	Rail, Dual Vat Left Burner Side W/A	1	
28	8232823	Rail, Dual Vat Right Burner Side W/A	1	
29	1061080SP	Replacement Dual Vat Frypot Kit (Propane/Butane Gas)	1	
30	8233302	Retainer, Lower Front Insulation	1	
31	8233303	Combustion Chamber Outer Front	1	
32	8240865	Seal, Dual Vat Frypot Left	1	
33	8240866	Seal, Dual Vat Frypot Right	1	
34	9000914	Retainer, Dual Vat Combustion Chamber Back	1	
35	9001031	Retainer, Burner Sight Glass	1	
36	9001049	Retainer, Plenum Gasket	1	
37	9001515	Retainer, Frypot Upper Insulation	1	
38	9004452	Retainer, Frypot Side Insulation	1	
39	9300818	Bracket, Flue to Pot	1	
40	9004253	Strip, Fluecap Retainer	1	
41	8240541	Riser, DV Pot Divider W/A	1	
42	9102474	Pot-to-Pot Gap Clip	1	
43	1061079SP	Replacement Dual Vat Frypot Kit (Natural Gas (G20/G25))	1	[1]
44	1061080SP	Replacement Dual Vat Frypot Kit (Propane/Butane Gas)	1	[2]
45	1061070	Frypot Assembly Dual-Vat w/RF HE	1	[3]

# BIPH52-55 and MPH52-55 Series Gas Fryers

## Frypots and Associated Components - Dual-Vat Frypot Components

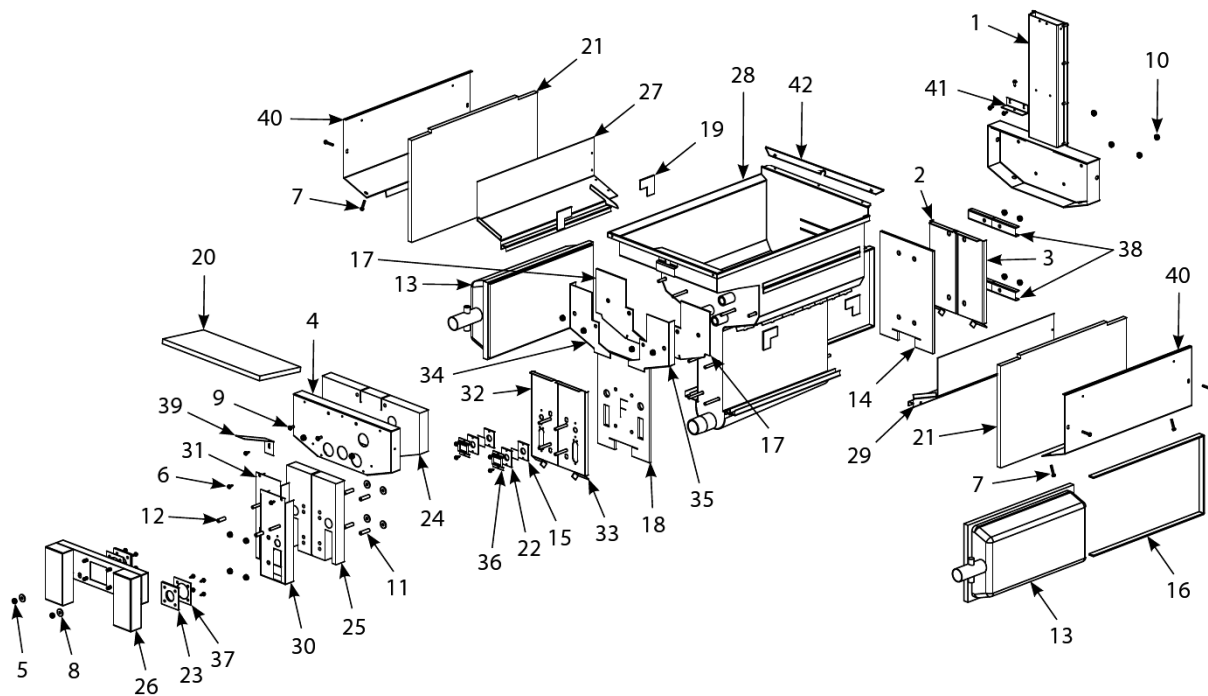
#	PART #	DESCRIPTION	QTY	Note
46	8260930	Dual Vat Insulation Kit	1	[4]
47	8260932	Burner Insulation Kit Dual Vat	1	[5]

**PART NOTES:**

- [1] - NAT
- [2] - PRO
- [3] - MFG
- [4] - includes all insulation and gaskets
- [5] - contains insulation and gaskets required when replacing burners

# BIPH52-55 and MPH52-55 Series Gas Fryers

## Frypots and Associated Components - Full-Vat Frypot Components



# BIPH52-55 and MPH52-55 Series Gas Fryers

## Frypots and Associated Components - Full-Vat Frypot Components

#	PART #	DESCRIPTION	QTY	Note
1	1061019SP	Flue Assembly, FV	1	
2	2000936	Back, Left Full Vat Combustion Chamber	1	
3	2000937	Back, Right Full Vat Combustion Chamber	1	
4	2002227	Retainer, Full Vat Frypot Outer Front Insulation	1	
5	8261372	Nut Grip 0.25-inch 0.25-20 Hex NP	10	
6	8261371	Screw - #8 x 0.5" Hex Head ZP	25	
7	8090362	Screw, 8 x 1.25-inch Hex Washer Head Drill Point	1	
8	8261383	Washer, 0.75-inch O.D. x 0.25-inch I.D. ZP	5	
9	8090500	Screw, 10 x 0.5-inch Hex Washer Head 410 SS	1	
10	8090804	Nut, 0.25- inch - 20 Keps Hex	1	
11	8261340	Spacer, .25-inch x 1.187-inch	10	
12	8100500	Spacer, .25-inch x .9375-inch	1	
13	8261072	Kit, Burner Replacement, Natural and Propane Gas	1	
14	8120355	Insulation, Full Vat Rear Combustion Chamber	1	
15	8120356	Insulation, Burner Sight Glass	1	
16	8120357	Insulation, HE Burner	1	
17	8120404	Insulation, Frypot Seal	1	
18	8120457	Insulation, Full Vat Inner Combustion Chamber	1	
19	8120706	Insulation, Upper Burner Rail	1	
20	8120993	Insulation, Frypot Upper	1	
21	8121029	Insulation, Combustion Chamber Side	1	
22	8140048SP	Glass, Burner Sight	1	
23	8160057	Gasket, Plenum	1	
24	8160560	Insulation, Full Vat Frypot Outer Front	1	
25	8160561	Insulation, Full Vat Combustion Chamber Outer	1	
26	8230969	Plenum	1	
27	8231777	Rail, Full Vat Left Burner	1	
28	8233323SP	Frypot, Full-Vat 439 SS	1	
29	8233142	Rail, Full Vat Right Burner	1	
30	8233304	Combustion Chamber Outer Front, Right	1	
31	8233305	Combustion Chamber Outer Front, Left	1	
32	8233315	Retainer W/A, Inner Left Front FV	1	
33	8233316	Retainer W/A, Inner Right Front FV	1	
34	8240863	Seal, Full Vat Frypot Left	1	
35	8240864	Seal, Full Vat Frypot Right	1	
36	9001031	Retainer, Burner Sight Glass	1	
37	9001049	Retainer, Plenum Gasket	1	
38	9001221	Retainer, Full Vat Combustion Chamber Back	1	
39	9001515	Retainer, Frypot Upper Insulation	1	
40	9004452	Retainer, Frypot Side Insulation	1	
41	9300818	Bracket, Flue to Pot	1	
42	9004253	Strip, Fluecap Retainer	1	
43	9102474	Pot-to-Pot Gap Clip	1	
44	1061049SP	Replacement Full Vat Frypot Kit (Natural Gas (G20/G25))	1	[1]
45	1061050SP	Replacement Full Vat Frypot Kit (Propane/Butane (G30/G31))	1	[2]
46	1061053	Frypot Assembly Full-Vat w/RF HE	1	[3]

# BIPH52-55 and MPH52-55 Series Gas Fryers

## Frypots and Associated Components - Full-Vat Frypot Components

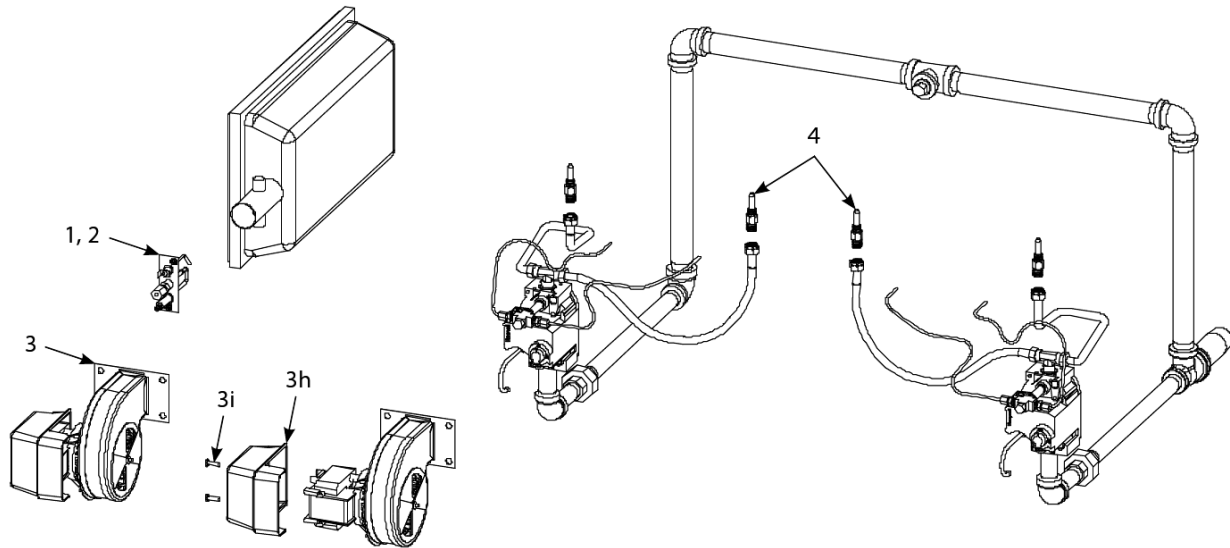
#	PART #	DESCRIPTION	QTY	Note
47	8260929	Full Vat Insulation Kit	1	[4]
48	8260931	Burner Insulation Kit Full Vat	1	[5]

**PART NOTES:**

- [1] - NAT
- [2] - PRO
- [3] - MFG
- [4] - includes all insulation and gaskets
- [5] - contains insulation and gaskets required when replacing burners

# BIPH52-55 and MPH52-55 Series Gas Fryers

## Gas Supply and Combustion System Components



# BIPH52-55 and MPH52-55 Series Gas Fryers

## Gas Supply and Combustion System Components

#	PART #	DESCRIPTION	QTY	Note
1	8260981	Ignitor and Gasket Kit - Natural Gas	1	[1]
1a	8260982	Ignitor and Gasket Kit - LP	1	[2]
1b	8160059	Gasket, Ignitor	1	
2	8261371	Screw - #8 x 0.5" Hex Head ZP	25	
3	1062996SP	Blower, Left (with 1.54-inch (3.91 cm) narrow housing), 100V, 50/60 Hz	1	[3]
3a	1062999SP	Blower Assembly, Combustion Air 100V 50/60 Hz	1	[4]
3b	1062994SP	Blower, Left (with 1.54-inch (3.91 cm) narrow housing), 115V, 50/60 Hz	1	[3]
3c	1062997SP	Blower Assembly, Combustion Air , 115V 50/60 Hz	1	[4]
3d	1062995SP	Blower, Left (with 1.54-inch (3.91 cm) narrow housing), 240V, 50/60 Hz	1	[3]
3e	1062998SP	Blower Assembly, Combustion Air 208-240V 50/60 Hz Non-CE International	1	[4]
3f	1063000SP	Blower Assembly, Left 230V, 50/60 Hz (with 2.8-inch (7.11 cm) wide housing) CE and Non-CE	1	[3]
3g	1063001SP	Blower Assembly, Combustion Air 230V 50/60 Hz CE	1	[4]
3h	8160554	Cover, Blower Motor	1	
3i	8090938	Screw, 10-32 x 0.625-inch Philips Truss Head	1	
3j	8068806SP	Harness Assembly, Blower Motor	1	
4		Orifice, Burner,	1	
4a	8121137	Orifice, 1.95 mm Propane/Butane (G30, G31) (0-4999 Ft, 0-1524 M) (CE)	1	[5]
4b	8101221	Orifice, 2.00 mm Propane/Butane (0-4999 Ft, 0-1524 M) (Japan)	1	[6]
4c	8100386	Orifice, 2.10 mm Propane/Butane (0-4999 Ft, 0-1524 M) Standard LP	1	[7]
4d	8100413	Orifice, 2.16 mm Propane/Butane (G30, G31) (5000-6999 Ft, 1525-2133 M)	1	[8]
4e	8121028	Orifice, 2.20 mm Propane/Butane (G30, G31) (7000-10,999 Ft, 2134-3352 M)	1	[9]
4f	8121134	Orifice, 3.10 mm Natural Gas (G20, G25) (0-4999 Ft, 0-1524 M) (Japan)	1	[10]
4g	8100403	Orifice, 3.40 mm Natural Gas (G20, G25) (0-4999 Ft, 0-1524 M) Standard Natural Gas	1	
4h	8100437	Orifice, 3.60 mm Natural Gas (G20, G25) (5000-6999 Ft, 1525-2133 M)	1	
4i	8121144	Orifice, 3.65 mm Natural Gas (G20, G25) (7000-8999 Ft, 2134-2743 M)	1	
4j	8121145	Orifice, 3.70 mm Natural Gas (G20, G25) (9000-10,999 Ft, 2744-3352 M)	1	
4k	8100642	Orifice, 5.95 mm Manufactured Gas (0-4999 Ft, 0-1524 M)	1	
5	8261196	Conversion Kit, Natural Gas (G20, G25) to Propane/Butane (G30, G31) CE	1	
5a	8261197	Conversion Kit, Propane/Butane (G30, G31) to Natural Gas (G20, G25) CE	1	
6	8072263	Switch, Air Pressure	1	
6a	8072262	Switch, Air Pressure (in units with 100VAC power supply) PH252/255 Full Vat Gas Manifold (Typical) - The example illustrated is typical of BIPH52/55-MPH52/55 Fryer Gas Manifolds. Each manifold is assembled from standard 1/2-, 3/4-, and 1-inch NPT black iron pipe nipples, elbows, tees, plugs, and unions, which ma	1	

# BIPH52-55 and MPH52-55 Series Gas Fryers

## Gas Supply and Combustion System Components

#	PART #	DESCRIPTION	QTY	Note
---	--------	-------------	-----	------

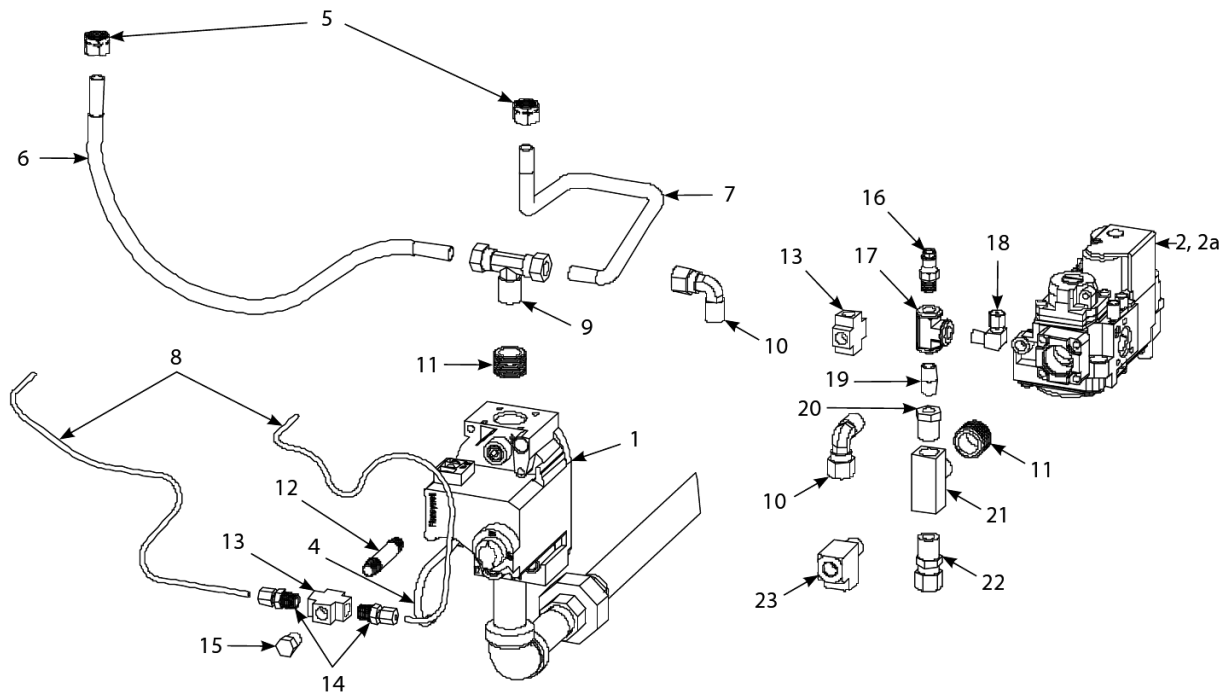
**PART NOTES:**

- |      |   |                                       |  |  |
|------|---|---------------------------------------|--|--|
| [1]  | - | G20, G25                              |  |  |
| [2]  | - | G30, G31                              |  |  |
| [3]  | - | Left                                  |  |  |
| [4]  | - | Right                                 |  |  |
| [5]  | - | G30, G310-4999 Ft, 0-1524 MCE         |  |  |
| [6]  | - | 0-4999 Ft, 0-1524 M Japan only        |  |  |
| [7]  | - | 0-4999 Ft, 0-1524 M                   |  |  |
| [8]  | - | G30, G315000-6999 Ft, 1525-2133 M     |  |  |
| [9]  | - | G30, G317000-10,999 Ft, 2134-3352 M   |  |  |
| [10] | - | G20, G250-4999 Ft, 0-1524 MJapan only |  |  |



# BIPH52-55 and MPH52-55 Series Gas Fryers

## Gas Valves and Associated Components



# BIPH52-55 and MPH52-55 Series Gas Fryers

## Gas Valves and Associated Components

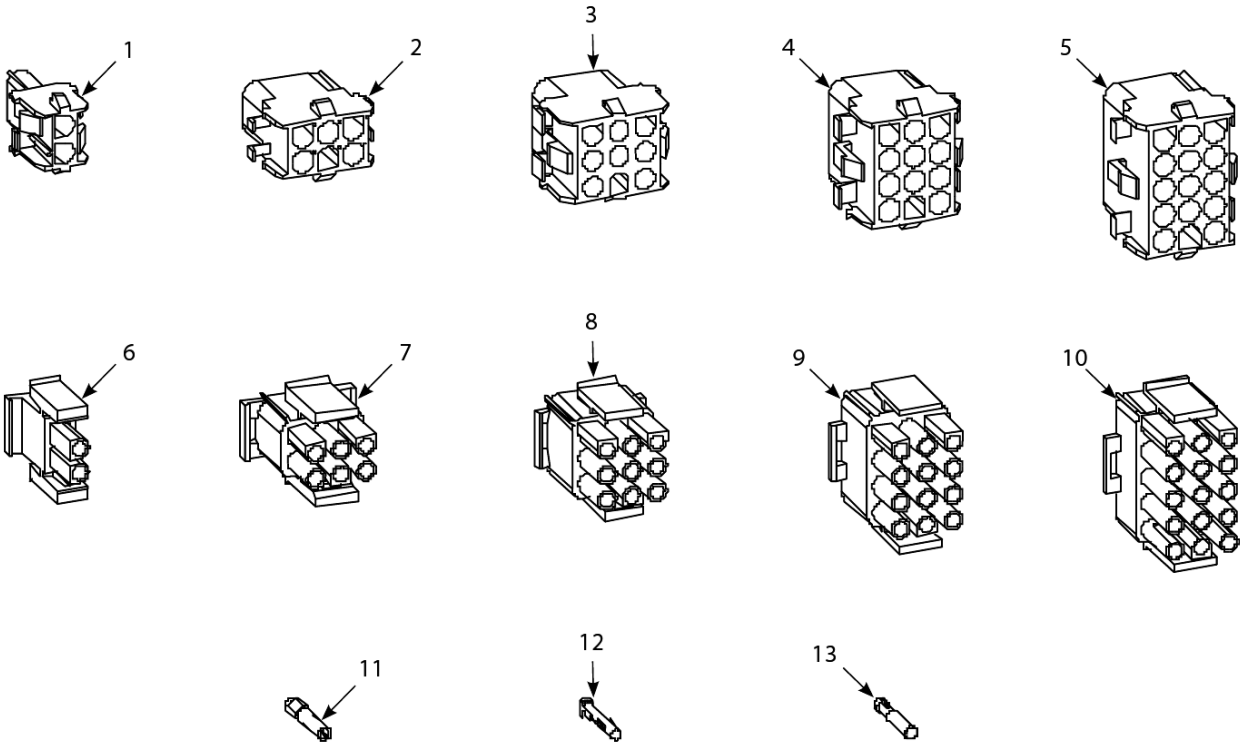
#	PART #	DESCRIPTION	QTY	Note
1	8261122	Valve, Non-CE, Natural Gas G20, G25	1	[1]
1a	8261120	Valve, Non-CE, Kit Natural Gas w/ flexlines and hardware	1	
1b	8261123	Valve, Non-CE, Propane Gas G30, G31	1	[2]
1c	8261121	Valve, Non-CE, Kit, Propane Gas w/ flexlines and hardware	1	
2	8101715	Valve, CE Gas G20, G25, G30, G31	1	[3]
2a	8101041	Gas valve accessory kit	1	[4]
4	8100691	Tube, 0.125-inch Vent	1	
5	8100494	Compression Nut (Ferrule), 0.375-inch Flexible Gas Line	1	
6	8101355	Gas Line, 0.375-inch OD X 15-inch SS Flexible	1	
7	8101354	Flexible Stainless Steel Gasline (Flexline), 0.375-inch OD, 12-inch	1	
7a	8101353	Gas Line, 0.375-inch OD X 9-inch SS Flexible	1	[5]
8	8110800	Enrichment Tube, 12.5-inch	1	[6]
9	8130301-FRY	Tee, 0.25-inch Male NPT to 0.375-inch Tube	1	
10	8130302	Elbow, 0.25-inch Male NPT to 0.375-inch Tube 90°	1	[7]
11	8130304	Bushing, 0.5-inch NPT to 0.25-inch NPT Flush Reducing	1	
12	8130405	Nipple, 0.125-inch NPT x 2-inch	1	
13	8130378	Fitting, 0.125-inch NPT Cross	1	
14	8130340	Adapter, 0.125-inch NPT to 0.125-inch Tube	1	
15	8130154	Plug, 0.125-inch NPT Hex Head Pipe	1	
16	8101176	Tap, 0.125-inch NPT Pressure	1	
17	8130377	Tee, 0.125-inch Female NPT	1	
18	8130354	Elbow, 0.125-inch NPT X 0.125-inch Tube Compression	1	
19	8130016	Nipple, 0.125-inch NPT Close	1	
20	8101006	Bushing, 0.25-inch NPT to 0.125-inch NPT Reducing	1	
21	8130495	Tee, 0.25-inch Male NPT to Female NPT	1	
22	8101025	Connector, 0.25-inch Male NPT to 0.375-inch Tube	1	
23	8101026	Tee, 0.25-inch Male NPT to Female NPT Street	1	

### PART NOTES:

- [1] - G20, G25
- [2] - G30, G31
- [3] - G20, G25, G30, G31
- [4] - contains parts to adapt to specific fryer configuration
- [5] - Used on some split pot applications
- [6] - cut and form to fit
- [7] - used on DV valve

# BIPH52-55 and MPH52-55 Series Gas Fryers

## Miscellaneous Connectors and Terminals



# BIPH52-55 and MPH52-55 Series Gas Fryers

## Miscellaneous Connectors and Terminals

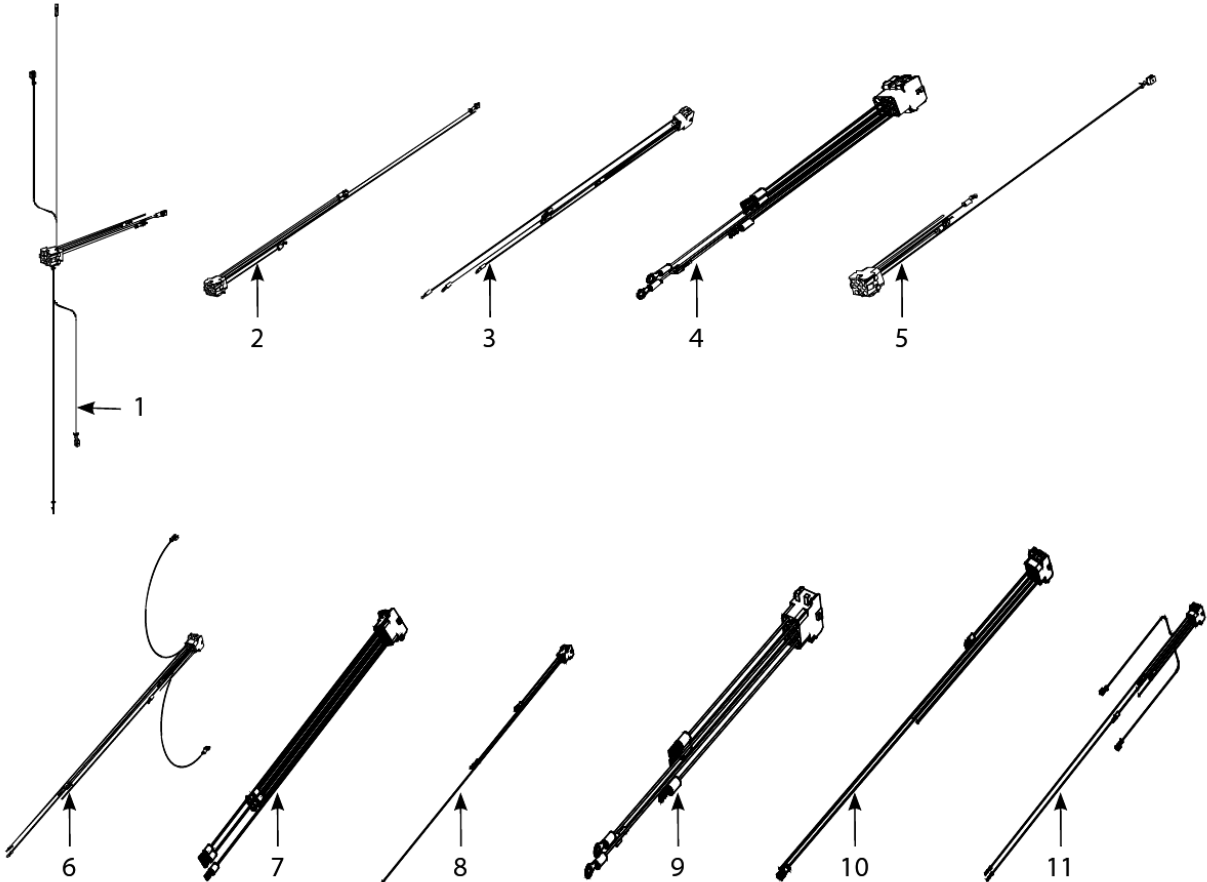
#	PART #	DESCRIPTION	QTY	Note
1	8071068	2-Pin Female	1	
2	8070158	6-Pin Female	1	
3	8070156	9-Pin Female	1	
4	8070159	12-Pin Female	1	
5	8070875	15-Pin Female	1	
6	8071067	2-Pin Male	1	
7	8070157	6-Pin Male	1	
8	8070155	9-Pin Male	1	
9	8070160	12-Pin Male	1	
10	8070804	15-Pin Male	1	
11	8261341	Terminal, Female Split Pin	25	
12	8261342	Terminal, Male Split Pin	25	
13	8072518	Plug, Mate-N-Lock	1	[1]

**PART NOTES:**

[1] - Dummy Pin

# BIPH52-55 and MPH52-55 Series Gas Fryers

## Transformer Box Cable Assemblies



# BIPH52-55 and MPH52-55 Series Gas Fryers

## Transformer Box Cable Assemblies

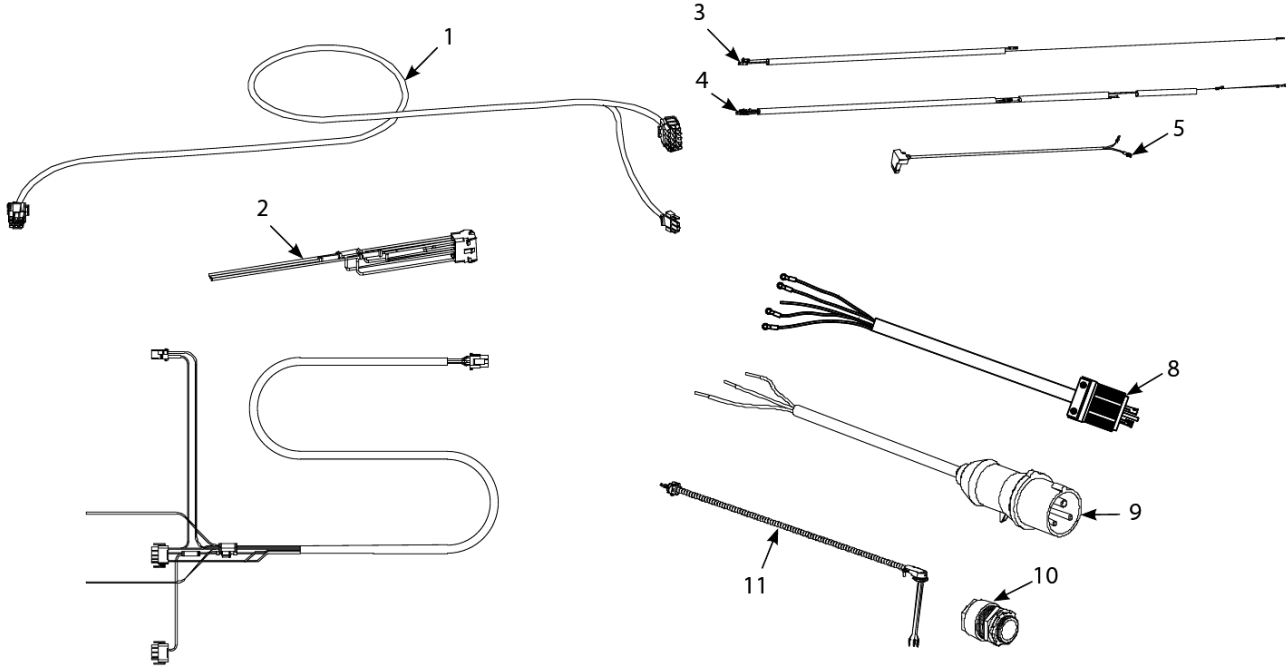
#	PART #	DESCRIPTION	QTY	Note
1	1061011SP	Cable Assembly, Transformer Box Line	1	[1]
2	1061016SP	Cable Assembly, Transformer Box to Filter Pump	1	[2]
3	1063821SP	Cable Assembly, Transformer Box #2 GL230 and 330	1	[3]
4	1063820SP	Cable Assembly, Transformer Box #1 Position	1	[4]
5	1063316	Cable Assembly, Transformer Box Line	1	[5]
6	1064990	Cable Assembly, Transformer Box Line	1	[6]
7	1063825SP	Cable Assembly, Transformer Box #3 GL330	1	[7]
8	1063826SP	Cable Assembly, Transformer Box to Filter Pump	1	[7]
9	1063827SP	Cable Assembly, Transformer Box #1 GL330	1	[7]
10	1064894	Cable Assembly, Transformer Box to Filter Pump	1	[8]
11	1064893	Cable Assembly, Transformer Box Line	1	[8]

### PART NOTES:

- [1] - Item 1 is used in transformer boxes 100-120V BIPH models 252, 255, 452, 455, FMPH models 252, 255 and 208-240V BIPH models 252, 255, BIPH models 452, 455 CE/Non-CE Export
- [2] - Item 2 is used in transformer boxes 100-120V FMPH models 152, 155, 252, 255, 352, 355, 452, 455, BIPH models 252, 255, 452, 455, and 208-240V BIPH models 252, 255, 452, 455 CE/Non-CE Export
- [3] - Item 3 is used in transformer boxes 100-120V FMPH models 152, 155, 252, 255, 352, 355, 452, 455-6, BIPH models 252, 255, 352, 355, 452, 455, 208-240V BIPH models 252, 255, 452, 455 CE/Non-CE Export, 250V BIPH models 252, 452 CE/Non-CE Export and 208-240V BIPH models 352, 355 CE/Non-CE Export
- [4] - Item 4 is used in transformer boxes 100-120V FMPH models 152, 155, 252, 255, 352, 355, 452, 455, BIPH models 252, 255, 452, 455, 208-240V BIPH models 252, 255, 452, 455 CE/Non-CE Export and 250V BIPH models 252, 452 CE/Non-CE Export
- [5] - Item 5 is used in transformer boxes 100-120V BIPH models 352, 355 and 208-240V BIPH models 352, 355 CE/Non-CE Export
- [6] - Item 6 is used in transformer box 250V BIPH models 352, 355 CE/Non-CE Export
- [7] - Items 7, 8 and 9 are used in transformer boxes 100-120V BIPH models 352, 355, 208-240V BIPH models 352, 355 CE/Non-CE Export and 250V BIPH models 352, 355 CE/Non-CE Export
- [8] - Items 10 and 11 are used in transformer box 250V BIPH models 252, 452 CE/Non-CE Export

# BIPH52-55 and MPH52-55 Series Gas Fryers

## Wiring Assemblies and Harnesses



# BIPH52-55 and MPH52-55 Series Gas Fryers

## Wiring Assemblies and Harnesses

#	PART #	DESCRIPTION	QTY	Note
1	8073584	Cable, Filter Lower 9-Pin Plug to 8072001 15-Pin (C2) Connector	1	
2	8072001	Cable, 15-Pin C2 Connector to Filter Terminal Block	1	
3	8063941SP	Harness, Full Vat Gas Valve	1	
4	8063940SP	Harness, Dual Vat Gas Valve	1	
5	8069678SP	Plug Assy, CE Gas Valve	1	
6	8071978	Main Wiring Harness 250/450	1	
7	8072168	CE MH/BIH52 Main Wiring Harness	1	
8	8066083	5-Wire with 4-Prong Twist-Lock Plug, 120V	1	[1]
9	8071696	3-Wire with 3-Pin Sleeved Plug, 230V	1	
10	8071560	Strain Relief	1	
11	1061020SP	Wiring, Pump	1	

**PART NOTES:**

[1] - w/Ring Terminals, no Clamp