



HEEG 24/36/48 & 60 BROILER MODELS

General Market Version

PARTS LIST

Toll Free Phone, (US & Canada): (800) 427-6668

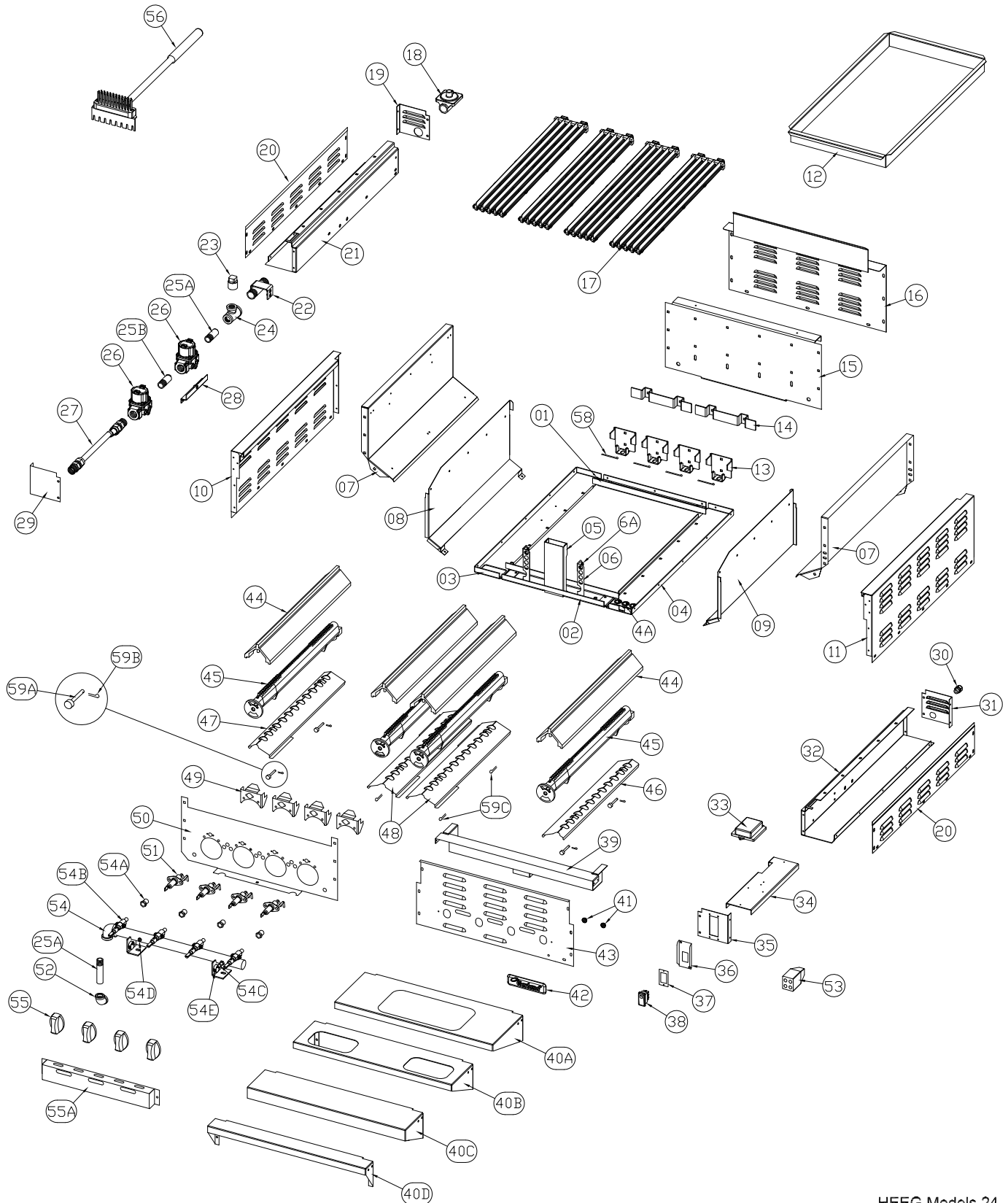
Toll Free Fax, (US & Canada): (800) 361-7745

<http://www.garland-group.com>



***GARLAND HEEG 24/36/48 & 60
BROILER MODELS***

CONTENTS:	PAGE
GARLAND HEEG 24" & 36" T - MODEL, TOP VIEW	4
GARLAND HEEG 48" & 60" T - MODEL, TOP VIEW	8
REVISION HISTORY	12



GARLAND PARTS IDENTIFICATION
HIGH EFFICIENCY BROILER - HEEG-24CL & HEEG-36CL

ITEM	PART #	DESCRIPTION	QUANTITY		Critical
			24	36	
1	4522445	Frame Brace Rear 24	1		
	4522446	Frame Brace Rear 36		1	
2	4522441	Frame Brace Front 24	1		
	4522442	Frame Brace Front 36		1	
3	4522437	Frame Left	1	1	
4	4522438	Frame Right	1	1	
4A	G01487-8	Snap Bushing .875 Dia	3	3	
5	4522483	Grease Chute Assembly	1	1	
6	4526859	High Voltage Wire Bracket	2	3	
6A	G01487-8	Snap Bushing .875 Dia	2	3	
7	4522455	Heat Chamber Side Lt/Rt	2	2	
8	4526709	Side Shield Left	1	1	
9	4526710	Side Shield Right	1	1	
10	4522462-1	Body Side Upper Left	1	1	
11	4522461-1	Body Side Upper Right	1	1	
12	4522622-01	Drip Tray 24 - SS	1		
	4522623 01	Drip Tray 36 - SS		1	
13A	4522485	Rear Radiant Support - Short (Used for Natural Gas Models Only)	4	6	
13B	4527327	Rear Radiant Support - Tall (Used for LP Gas Models Only)	4	6	
14	4522487	Rear Grate Support Long	2	3	
15	4522453	Heat Chamber Rear 24	1		
	4522454	Heat Chamber Rear 36		1	
16	4522474	Back Panel 24	1		
	4522475	Back Panel 36		1	
17	4522429	Standard Grate (6 Prong)	4	6	
	4526206	Reversible Grate (5 Prong)			
SEE GRATE DETAILS ON PAGE # 7 TO DETERMINE WHICH GRATES YOU HAVE					
18A	2127502	3/4 Regulator Natural Gas - 5" W.C.	1	1	C
18B	2127500	3/4 Regulator Propane Gas - 10" W.C.	1	1	C
19	4522490-1	Leg Cap Rear Left W/Gas Inlet Hole	1	1	
20	4522456-1	Body Side Lower Lt/Rt	2	2	
21	4526886	Leg Left Tall	1	1	
22	4526890-99	Supply Pipe & Bracket Assy C/W #10-24 Threaded Inserts	1	1	
23	1912404	1/2" Npt Allen Head Plug	1	1	
24	4522661	3/4" X 1/2" X 1/2" Reducing Tee	1	1	
25A	G01896-2	Pipe Nipple 1/2" X 3.5" Long	2	2	
25B	G01477-3	Pipe Nipple 1/2" X 2" Long	1	1	
26	4526672	Solenoid Valve 120V 60Hz - 1/2" Npt Inlet X 1/2" Npt Outlet	2	2	
27	4526775	1/2" Id S/S Flex Tube Assy C/W 1/2" Npt Male Adapters (Both Ends)	1	1	
28	4526708	Bracket Solenoid Valve C/W #10-24 Threaded Insert	1	1	
29	4526688	Leg Cap Front Left Solid	1	1	
30	2490500	Power Supply Cord Strain Relief	1	1	
30A*	4523399	Power Supply Cord (8Ft Long)	1	1	
31	4522620-1	Leg Cap Rear Right W/D Hole For Strain Relief	1	1	
32	4526889	Leg Right Tall	1	1	
33	4525444	Module Spark Ignition 4 Burner	1		C
	4525445	Module Spark Ignition 6 Burner		1	C
34	4525583-1	Ignition Module Bracket	1	1	
35	4522488-1	Leg Cap Front Right W/Single Switch Cutout	1	1	
36	4522621-1	Single Switch Guard	1	1	
37	4523360	Power Switch Label	1	1	
38	4520969	Power Switch (Illuminated)	1	1	C

* NOT ILLUSTRATED

RECOMMENDED STOCK PARTS

GARLAND PARTS IDENTIFICATION
HIGH EFFICIENCY BROILER - HEEG-24CL & HEEG-36CL

ITEM	PART #	DESCRIPTION	QUANTITY		Critical
			24	36	
4 FRONT RAIL STYLES ARE AVAILABLE. BOTH THE HEEG24 & HEEG36 WILL HAVE ONLY ONE OF THE RAILS LISTED BELOW					
39	4522505-1	Grease Trough Assembly 24	1		
	4522506-1	Grease Trough Assembly 36		1	
40A	4522470-1	Front Rail With 1/3 Pan Cutouts 24	1		
	4522471-1	Front Rail With 1/3 Pan Cutouts 36		1	
40B	4526285	Front Rail With 1/9 Pan Cutouts 24	1		
	4526286	Front Rail With 1/9 Pan Cutouts 36		1	
40C	4526301	Front Rail Standard 24	1		
	4526302	Front Rail Standard 36		1	
40D	4526343	Front Rail Stub 24	1		
	4526344	Front Rail Stub 36		1	
41	F95	1/4-20 Pal Nut (For Logo)	2	2	
42	4523154	Garland Logo Small	1	1	
43	4522466-1	Valve Panel 24	1		
	4522467-1	Valve Panel 36		1	
44	4522431	Burner Radiant	4	6	
45A	4522477-1	Burner C/W Shutter Assembly - Natural Gas Models	4	6	
45B	4522477-2	Burner C/W Shutter Assembly - Propane Gas Models	4	6	
46	4522459	Air Baffle Right	1	1	
47	4522458	Air Baffle Left	1	1	
48	4522457	Air Baffle Center	2	4	
49A	4522484	Front Radiant Support Short (Used for Natural Gas Models Only)	4	6	
49B	4527442	Bracket - Radiant Front Support. (Used for Propane Gas Models Only)			
50	4522449	Heat Chamber Front 24	1		
	4522450	Heat Chamber Front 36		1	
51	4522432	Spark Electrode Assembly	4	6	C
51A*	G03757-R	Insulation Spark Electrode (Sold By The Foot - 3" Per Electrode)	X	X	
52	G01474-2	1/2" Npt Elbow	1	1	
53	4525593	Wire connector - 4 Wire Push-In	1	1	
54	4522507-1	Manifold Assembly 4 Burner C/W Valves - Natural Gas	1		
	4522509-1	Manifold Assembly 6 Burner C/W Valves - Natural Gas		1	
	4522507-3	Manifold Assembly 4 Burner C/W Valves - Propane Gas	1		
	4522509-3	Manifold Assembly 6 Burner C/W Valves - Propane Gas		1	
54A	M8-51	Small Orifice Size #51 - Natural Gas	4	6	C
	M8-59	Small Orifice Size #59 - Propane Gas	4	6	C
54B	4526393	Valve High-Low-No Off	4	6	
54C	G02251-1	Pressure Test Spigot	1	1	
54D	2203400	1/8" Npt Plug	1	1	
54E	G01487-8	Heyco Snap Bushing Sb875-11	2	2	
55	4522585	Knob - Valve Control	4	6	
55A	4522494-1	Valve Cover 24 (Only When There Are No Knobs)	1		
	4522495-1	Valve Cover 36 (Only When There Are No Knobs)		1	
56	4524388	EE Cleaning Utensil - Standard Rack	1	1	
	4527200	EE Cleaning Utensil - Reversible Rack	1	1	
57*	4524613	Insulation (Sold By Square Foot - Measure & Order By Size Needed)	3.3FT	3.9FT	
58	8020602	Cotter Pin 7/64 Dia X 3" Long (Secure Burner To Rear Support)	4	6	
59A	8020701	Clevis Pin 1-1/2" Long x 1/4" diameter. (to Secure Baffles To Burners.)	4	4	
		Location: On the Outer LT & RT Burners. (Also used P/N F154 Cotter Pin to Secure Clevis Pin)			
59B	F154	Cotter Pin 3/32" Dia x 1" Long Location: On the Outer Burners (Secure Clevis Pin 8020701)	4	4	
59C	8020601	Cotter Pin 7/16 x 1-1/2" (2 pins per Middle Burner)	4	8	
60*	8003608	Carriage Bolt Ss (1/4-20 X 3/4" Long)	47	51	

* NOT ILLUSTRATED

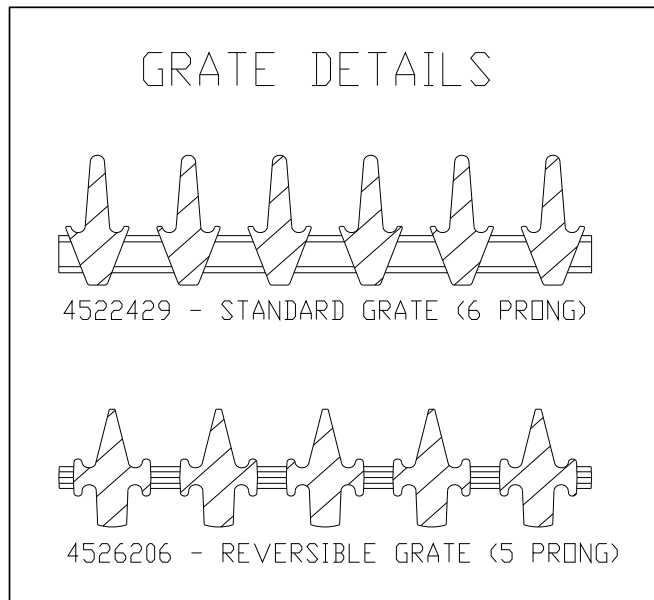
RECOMMENDED STOCK PARTS

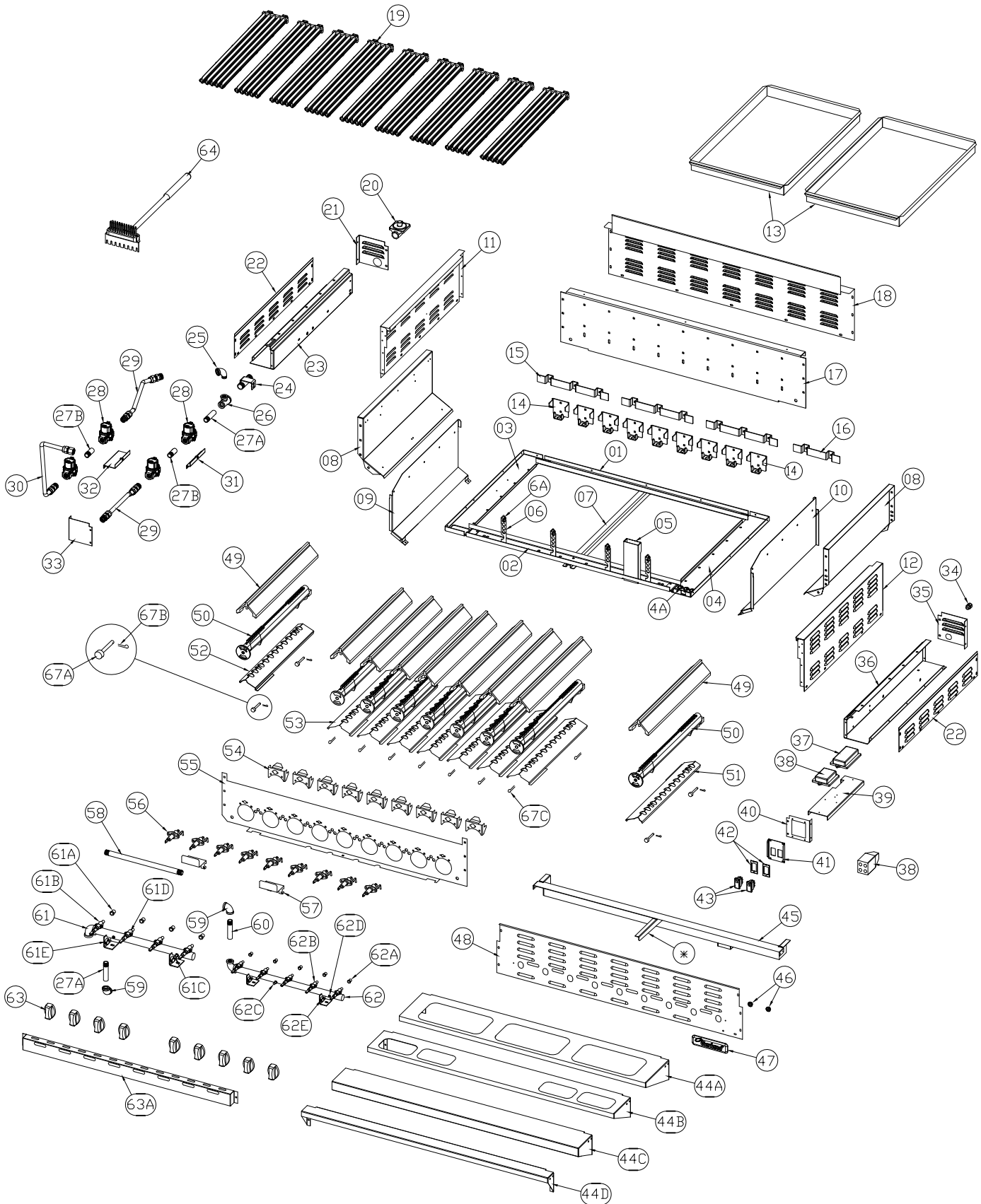
**GARLAND PARTS IDENTIFICATION
HIGH EFFICIENCY BROILER - HEEG-24CL & HEEG-36CL**

ITEM	PART #	DESCRIPTION	QUANTITY		Critical
			24	36	
61*	8000203	Lock Washer 1/4 X 3/4 X 5/64 Thick	73	81	
62*	8001206	Hex Nut (1/4-20)	73	81	
63*	4525624-1	Wire Package HEE24 120Vac (Complete)	1	1	C
	4525625-1	Wire Package HEE36 120Vac (Complete)			
WIRING DIAGRAMS					
64*	4525617-1	Wiring Diagram - HEE 24" 120Vac	1		C
	4525618-1	Wiring Diagram - HEE 36" 120Vac		1	
MANUALS					
65*	4526671	Installation & Operational Manual - HEEG - 24/36/48/60CI	1	1	

* NOT ILLUSTRATED

RECOMMENDED STOCK PARTS





HEEG Models

**GARLAND PARTS IDENTIFICATION
HIGH EFFICIENCY BROILER - HEEG-48CL & HEEG-60CL**

ITEM	PART #	DESCRIPTION	QUANTITY		Critical
			48	60	
1	4522443	Frame Brace Rear 48	1		
	4522444	Frame Brace Rear 60		1	
2	4522439	Frame Brace Front 48	1		
	4522440	Frame Brace Front 60		1	
3	4522437	Frame Left	1	1	
4	4522438	Frame Right	1	1	
4A	G01487-8	Snap Bushing .875 Dia	3	3	
5	4522483	Grease Chute Assembly	1	1	
6	4526859	High Voltage Wire Bracket	4	5	
6A	G01487-8	Snap Bushing .875 Dia	4	5	
7	4522463	Center Guide Drip Tray	1	1	
8	4522455	Heat Chamber Side Lt/Rt	2	2	
9	4526709	Side Shield Left	1	1	
10	4526710	Side Shield Right	1	1	
11	4522462-1	Body Side Upper Left	1	1	
12	4522461-1	Body Side Upper Right	1	1	
13	4522624-01	Drip Tray 48	2		
	4522625-01	Drip Tray 60		2	
14A	4522485	Rear Radiant Support - Short (Used for Natural Gas Models Only)	9	11	
14B	4527327	Rear Radiant Support - Tall (Used for LP Gas Models Only)	9	11	
15	4522487	Rear Grate Support Long	3	3	
16	4522486	Rear Grate Support Short		1	
17	4522451	Heat Chamber Rear 48	1		
	4522452	Heat Chamber Rear 60		1	
18	4522472	Back Panel 48	1		
	4522473	Back Panel 60		1	
19	4522429	Standard Grate (6 Prong)	9	11	
	4526206	Reversible Grate (5 Prong)			
SEE GRATE DETAILS ON PAGE # 7 TO DETERMINE WHICH GRATES YOU HAVE					
20A	2127502	3/4 Regulator Natural Gas - 5" W.C.	1	1	C
20B	2127500	3/4 Regulator Propane Gas - 10" W.C.			
21	4522490-1	Leg Cap Rear Left W/Gas Inlet Hole	1	1	
22	4522456-1	Body Side Lower Lt/Rt	2	2	
23	4526886	Leg Left Tall	1	1	
24	4526890-99	Supply Pipe & Bracket Assy C/W #10-24 Threaded Inserts	1	1	
25	G01475-1	1/2" Npt Street Elbow	1	1	
26	4522661	3/4" X 1/2" X 1/2" Reducing Tee	1	1	
27A	G01896-2	Pipe Nipple 1/2" X 3.5" Long	3	3	
27B	G01477-3	Pipe Nipple 1/2" X 2" Long	2	2	
28	4526672	Solenoid Valve 120V 60Hz - 1/2" Npt Inlet X 1/2" Npt Outlet	4	4	C
29	4526775	1/2" Id S/S Flex Tube Assy C/W 1/2" Npt Male Adapters (Both Ends)	2	2	
30	4526860	1/2" Id S/S Flex Tube Assy C/W 1/2" Npt Male & Female Adapters	1	1	
31	4526708	Bracket Solenoid Valve C/W #10-24 Threaded Insert	1	1	
32	4526708-1	Bracket Solenoid Valve (Dual Train) C/W #10-24 Threaded Insert	1	1	
33	4526688	Leg Cap Front Left Solid	1	1	
34	2490500	Power Supply Cord Strain Relief	1	1	
34A*	4523399	Power Supply Cord (8Ft Long)	1	1	
35	4522620-1	Leg Cap Rear Right W/D Hole For Strain Relief	1	1	
36	4526889	Leg Right Tall	1	1	
37	4525445	Module Spark Ignition 6 Burner	1	2	C
	4525444	Module Spark Ignition 4 Burner	1		C
38	4525593	Wire connector - 4 Wire Push-In	1	1	

* NOT ILLUSTRATED

RECOMMENDED STOCK PARTS

GARLAND PARTS IDENTIFICATION
HIGH EFFICIENCY BROILER - HEEG-48CL & HEEG-60CL

ITEM	PART #	DESCRIPTION	QUANTITY		Critical
			48	60	
39	4525583-1	Ignition Module Bracket	1	1	
40	4522488-2	Leg Cap Front Right W/Double Switch Cutout	1	1	
41	4522491-1	Double Switch Guard	1	1	
42	4523360	Power Switch Label	2	2	
43	4520969	Power Switch (Illuminated)	2	2	C

4 FRONT RAIL OPTIONS ARE LISTED BELOW WITH CORRESPONDING GREASE TROUGH ASSEMBLY BY UNIT SIZE - FOR HEEG48					
44A	4522468-1	Front Rail With 1/3 Pan Cutouts 48	1		
45	4522503-1	Grease Trough Assemblby (No Support) 48	1		
44B	4526287	Front Rail With 1/9 Pan Cutouts 48	1		
45	4522503-1	Grease Trough Assemblby (No Support) 48	1		
44C	4526303	Front Rail Standard 48	1		
45	4522503-1	Grease Trough Assemblby (No Support) 48	1		
44D	4526345	Front Rail Stub 48	1		
45	4522503-1	Grease Trough Assemblby (No Support) 48	1		

4 FRONT RAIL OPTIONS ARE LISTED BELOW WITH CORRESPONDING GREASE TROUGH ASSEMBLY BY UNIT SIZE - FOR HEEG60					
44A	4522469-1	Front Rail With 1/3 Pan Cutouts 60		1	
45A	4522504-1	Grease Trough Assembly 60 W/Long Support		1	
44B	4526288	Front Rail With 1/9 Pan Cutouts 60		1	
45B	4522504-2	Grease Trough Assembly 60 W/Short Support		1	
44C	4526304	Front Rail Standard 60		1	
45B	4522504-2	Grease Trough Assembly 60 W/Short Support		1	
44D	4526346	Front Rail Stub 60		1	
45	4522504-3	Grease Trough Assemblby (No Support) 60		1	

ASTERISK * ON EXPLODED DRAWING INDICATES THE SUPPORT THAT IS EITHER LONG (AS SHOWN), SHORT OR OMITTED

46	F95	1/4-20 Pal Nut (For Logo)	2	2	
47	4523154	Garland Logo Small	1	1	
48	4522464-1	Valve Panel 48	1		
	4522465-1	Valve Panel 60		1	
49	4522431	Burner Radiant	9	11	
50A	4522477-1	Burner C/W Shutter Assembly - Natural Gas Models	9	11	
50B	4522477-2	Burner C/W Shutter Assembly - Propane Gas Models	9	11	
51	4522459	Air Baffle Right	1	1	
52	4522458	Air Baffle Left	1	1	
53	4522457	Air Baffle Center	7	9	
54A	4522484	Front Radiant Support Short (Used for Natural Gas Models Only)	9	11	
54B	4527442	Bracket - Radiant Front Support. (Used for Propane Gas Models Only)			
55	4522447	Heat Chamber Front 48	1		
	4522448	Heat Chamber Front 60		1	
56	4522432	Spark Electrode Assembly	9	11	
56A*	G03757-R	Insulation Spark Electrode (Sold By The Foot - 3" Per Electrode)	X	X	

* NOT ILLUSTRATED

RECOMMENDED STOCK PARTS

GARLAND PARTS IDENTIFICATION
HIGH EFFICIENCY BROILER - HEEG-48CL & HEEG-60CL

ITEM	PART #	DESCRIPTION	QUANTITY		Critical
			48	60	
57	4526722	Bracket Pipe Support	2	2	
58	G01477-17	1/2" Pipe X 14.25" Long (Npt Both Ends) 48	1		
	G01477-16	1/2" Pipe X 24.5" Long (Npt Both Ends) 60		1	
59	G01474-2	1/2" Npt Elbow	2	2	
LEFT SIDE GAS TRAIN DETAILS					
61	4522507-1	Manifold Assembly 4 Burner C/W Valves - Natural Gas	1		
	4522509-1	Manifold Assembly 6 Burner C/W Valves - Natural Gas		1	
	4522507-3	Manifold Assembly 4 Burner C/W Valves - Propane Gas	1		
	4522509-3	Manifold Assembly 6 Burner C/W Valves - Propane Gas		1	
61A	M8-51	Small Orifice Size #51 - Natural Gas	4	6	C
	M8-59	Small Orifice Size #59 - Propane Gas	4	6	C
61B	4526393	Valve High-Low-No Off	4	6	
61C	G02251-1	Pressure Test Spigot	1	1	
61D	2203400	1/8" Npt Plug	1	1	
61E	G01487-8	Heyco Snap Bushing Sb875-11	2	2	
RIGHT SIDE GAS TRAIN DETAILS					
62	4522821-1	Manifold Assembly 5 Burner C/W Valves - Natural Gas	1	1	
	4522821-3	Manifold Assembly 5 Burner C/W Valves - Propane Gas	1	1	
62A	M8-51	Small Orifice Size #51 - Natural Gas	5	5	C
62B	4526393	Valve High - Low - On Off	5	5	
62C	G02251-1	Pressure Test Spigot	1	1	
62D	2203400	1/8" Npt Plug	1	1	
62E	G01487-8	Heyco Snap Bushing SB875-11	2	2	
63	4522585	Knob - Valve Control	9	11	
63A	4522492-1	Valve Cover 48 (Only When There Are No Knobs)	1		
	4522493-1	Valve Cover 60 (Only When There Are No Knobs)		1	
64	4524388	EE Cleaning Utensil - Standard Rack	1	1	
	4527200	EE Cleaning Utensil - Reversible Rack	1	1	
65*	4524613	Insulation (Sold By Square Foot - Measure & Order By Size Needed)	3.3FT	3.9FT	
66	8020602	Cotter Pin 7/64 Dia X 3" Long (Secure Burner To Rear Support)	9	11	
67A	8020701	Clevis Pin 1-1/2" Long x 1/4" diameter. (to Secure Baffles To Burners.) Location: On the Outer LT & RT Burners. (Also used on P/N F154 Cotter Pin to Secure Clevis Pin)	4	4	
67B	F154	Cotter Pin 3/32" Dia x 1" Long Location: On the Outer Burners (Secure Clevis Pin 8020701)	4	4	
67C	8020601	Cotter Pin 7/16 x 1-1/2" (2 pins per Middle Burner)	14	18	
68*	8003608	Carriage Bolt Ss (1/4-20 X 3/4" Long)	55	59	
69*	8000203	Lock Washer 1/4 X 3/4 X 5/64 Thick	89	97	
70*	8001206	Hex Nut (1/4-20)	89	97	
71*	4525626-1	Wire Package HEE48 120Vac (Complete)	1	1	
	4525627-1	Wire Package HEE60 120Vac (Complete)			
Wiring Diagrams & Manuals					
72*	4525619-1	Wiring Diagram - HEE 48" 120Vac			
73*	4525620-1	Wiring Diagram - HEE 60" 120Vac			
74*	4526671	Installation And Operational Manual - High Efficiency Broiler - HEEG-24/36/48/60Cl			

* NOT ILLUSTRATED

RECOMMENDED STOCK PARTS

GARLAND PARTS IDENTIFICATION
Revision History

REV. #	PAGE #	ITEM #	NOTE	DATE
0			Part List Released - HEEG Broilers Models	July 9/09
1	5	33	Part number changed - was 4524444	July 14/09
	9	38		
2	4,5	25	Item number 25 (1004642 - 1/2" Npt Nipple X 2" Long) replaced by item number 53.	Aug 18/09
	6	53	Quantity increase from 1 to 3 (24 & 36 models)	
	8,9	27	Item number 27 (1004642 - 1/2" Npt Nipple X 2" Long) replaced by item number 60.	
	10	60	Quantity increase from 2 to 5 (48 & 60 models)	
3	4,8		New drawing	Sept 29/09
	6	59A	Was 59 Quantity Changed Was 8, 12, Location Added	
	11	67A	Was 67 Quantity Changed Was 18,22, Location Added	
	6,11	59B,67B 59C,67C	New part number added	
4	4		New drawing same part number on item 8,9,19,31.	Feb 3/10
	8		New drawing same part number on item 9,10,21,35.	
5	4,8		Switched over side plates view on drawing. (page 4 item 7,8,9) - (page 8 item 8,9,10)	Feb 17/10
6	4,8		New drawing	April 1/10
	5,9	25A,27A	Swapped Items #53 to 25A. Also description changed, was 1/2" Npt Nipple X 3.5" Long. Qty changed from 3 to 2.	
		25B,27B	New part number added	
	6	53	New part number inserted.	
	5,6	4A,6A,54E	Part number changed - was 1028809	
	9,11	4A,6A,61E,62E		
	5,9	13A,14A	Description changed - was Rear Radiant Support	
		13B,14B	New part number added	
		18A,20A	Part number changed - was 1019012	
		18B,20B	New part number added	
	5,9	30A,34A	Part number changed - was 1029501	
	5	36	Part number changed - was 4522621	
	6	41	Part number changed - was 4522491	
	6,10	41,46	Part number changed - was 1019801	
		45A,50A	Description changed	
		45B, 50B	New part number added	
		49A,54A	Description changed	
		49B,54B	New part number added	
	6,10	51A,56A	Part number changed - was G03883R	
		52,59	Part number changed - was 1026703	
		53,60	Part number changed - was 1004645	
	6,11	54,61	Description changed - was Manifold Assembly # Burner C/W Valves New part number added - 4522507-3 & 4522509-3	
		54A,61A	New part number added - M8-59 : Small Orifice Size #59 - Propane Gas	
		59A,67A	New part number, was (8020601 = Cotter Pin 7/64 Dia X 1-1/2" Long (Secure Baffles To Burner) Location: On the Outer Burners Only)	
		59B,67B	New part number, was (8020603 = Cotter Pin 3/32 Dia X 1" Long (Secure Baffles To Burner) Location: On the Inner Burners Only)	
	6	59C	New part number, was (8020701 = Clevis Pin 1-1/2" Long x 1/4" diameter (Used on P/N 8020603 and 8020601 to secure Baffles to Burners))	
	9	25	Part number changed - was 1026733	
		38	New part number added	
	10	58	Part number changed - # G01477-17 was 4526913-02, # G01477-16 was 4526913-01	
		60	Part number moved to item #27A.	
	11	62	Description changed #4522821-1 was: Manifold Assembly 5 Burner C/W Valves New part number 4522821-3	
7	5	12	Part number changed - was 4522622 (Drip Tray 24) & 4522623 (Drip Tray 36)	Oct 5/10
	9	13	Part number changed - was 4522624 (Drip Tray 48) & 4522625 (Drip Tray 60)	

 **Garland**[®]