

Master “M” Series Gas Upright Broilers

Parts List

Models:

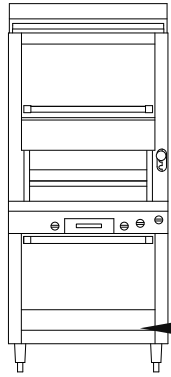
M100XRM

M100XRCM

M100XSM

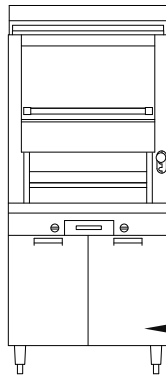
M100XTM

Rating Plate Location



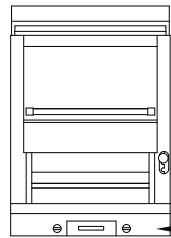
Model with an Oven Base.

The Rating Plate is affixed to the front edge of the chassis bottom, behind the front kick plate.



Model with a Storage Base.

The Rating Plate is affixed to the inside of the right cabinet door.

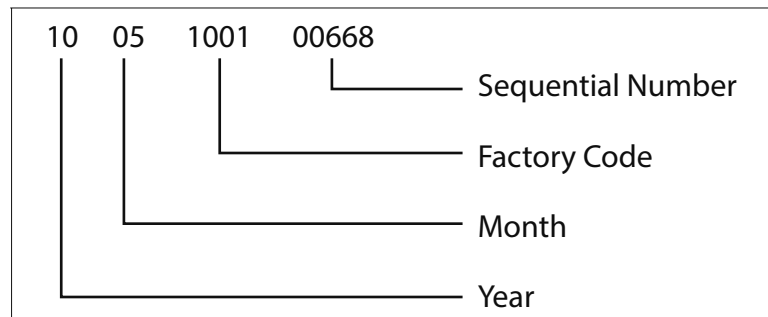


Modular Top Model.

The Rating Plate is affixed to the bottom panel, behind the valve panel.

Serial# Interpretation

The Serial Number is **13 Digits** long.





Master Series Heavy Duty Gas Upright Broilers

models

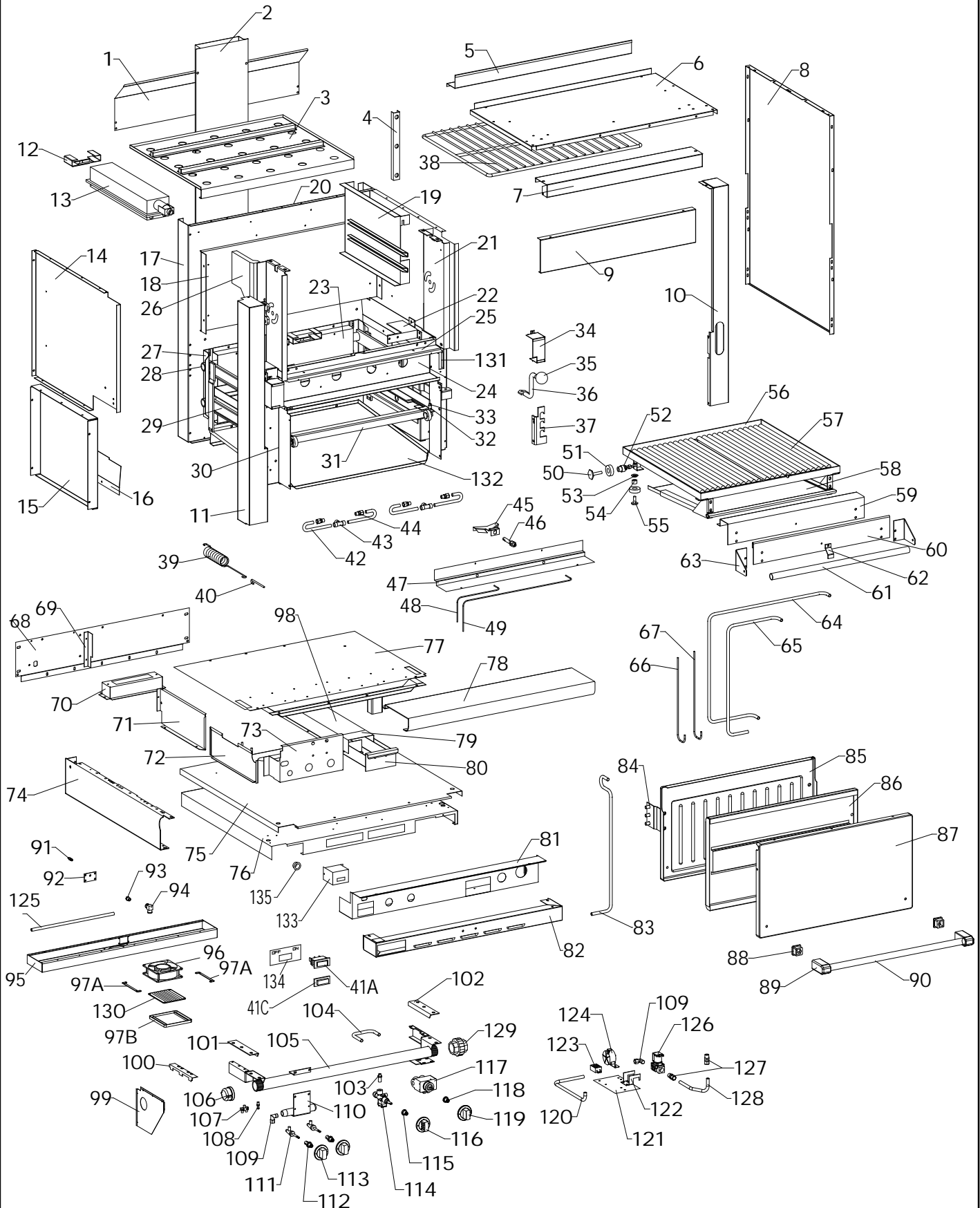
M100XRM, M100XRCM

M100XSM, M100XTM

Contents

| | |
|---|----|
| Introduction / Rating Plate Location / Serial# Interpretation | 2 |
| Components..... | 4 |
| Critical & Recommended Stock Parts List..... | 10 |
| Revision History..... | 11 |

COMPONENTS



GARLAND PARTS IDENTIFICATION
Master Series Heavy Duty Gas Upright Broiler
models XM100XRM / XM100XRCM / XM100XSM / M100XTM

COMPONENTS

| ITEM | PART # | DESCRIPTION | QTY | | | | CRITICAL |
|------|---------------|--------------------------------|---------|----------|---------|---------|----------|
| | | | X100XRM | X100XRCM | X100XSM | X100XTM | |
| 1 | 2676301 | Flue Diverter (S/S) | 1 | 1 | 1 | 1 | |
| 2 | 1139699 | Flue Riser Assy. | 1 | 1 | | | |
| 3 | 4516307 | Upper Oven Bottom Assy. | 1 | 1 | 1 | 1 | |
| 4 | G01260-01-8 | Channel Brace Assy. | 2 | 2 | 2 | 2 | |
| 5 | 4515517 | Flue Shield | 1 | 1 | 1 | 1 | |
| 6 | 2666200 | Main Top - Std. | 1 | 1 | 1 | 1 | |
| | 2666201 | Main Top - Stainless (Opt.) | 1 | 1 | 1 | 1 | |
| 7 | 2668200 | Main Front | 1 | 1 | 1 | 1 | |
| 8 | 2636000 | Main Side - Black | 1 | 1 | 1 | 1 | |
| | 2636001 | Main Side - Stainless | 1 | 1 | 1 | 1 | |
| 9 | 4515134 | Front Panel | 1 | 1 | 1 | 1 | |
| 10 | 4517427 | Corner Column R/H | 1 | 1 | 1 | 1 | |
| 11 | 4516877 | Corner Column Assy. L/H | 1 | 1 | 1 | 1 | |
| 12 | G01994-1-6 | Burner Bracket | 4 | 4 | 4 | 4 | |
| 13 | G01229-01 | Infra-Red Burner (Specify Gas) | 4 | 4 | 4 | 4 | |
| 14 | 4515055 | Upper Insulation Lining L/H | 1 | 1 | 1 | 1 | |
| | 4515056 | Upper Insulation Lining R/H | 1 | 1 | 1 | 1 | |
| 15 | 4515037 | Lower Liner | 2 | 2 | 2 | 2 | |
| 16 | 4516045 | Inner Deflector L/H | 1 | 1 | 1 | 1 | |
| | 4516046 | Inner Deflector R/H | 1 | 1 | 1 | 1 | |
| 17 | 2632200 | Main Back | 1 | 1 | 1 | 1 | |
| 18 | 4515597 | Back Insulation Lining | 1 | 1 | 1 | 1 | |
| 19 | G6344-01-81E | Oven Side Lining Assy. R/H | 1 | 1 | 1 | 1 | |
| | G6344-01-82E | Oven Side Lining Assy. L/H | 1 | 1 | 1 | 1 | |
| 20 | 2680500 | Back Insulation Box | 1 | 1 | 1 | 1 | |
| 21 | G01030-01-81E | Oven Door Support R/H | 1 | 1 | 1 | 1 | |
| | G01030-01-82E | Oven Door Support L/H | 1 | 1 | 1 | 1 | |
| 22 | 4515046 | Front Burner Shield - R/H | 1 | 1 | 1 | 1 | |
| | 4515048 | Front Burner Shield - L/H | 1 | 1 | 1 | 1 | |
| 23 | G01996-1-6 | Back Liner | 1 | 1 | 1 | 1 | |
| 24 | 4515047 | Burner Housing | 1 | 1 | 1 | 1 | |
| 25 | 2635700 | Front Filler Strip | 1 | 1 | 1 | 1 | |
| 26 | G6007L | Door Counterweight L/H | 1 | 1 | 1 | 1 | |
| | G6007R | Door Counterweight R/H | 1 | 1 | 1 | 1 | |
| 27 | G01227-1-8 | Carriage Support | 2 | 2 | 2 | 2 | |
| 28 | G01234-01-5 | Rack Raising Arm Upper Assy. | 1 | 1 | 1 | 1 | |
| 29 | G01234-02-5 | Rack Raising Arm Lower Assy. | 1 | 1 | 1 | 1 | |
| 30 | 4515051 | Front Frame Side L/H | 1 | 1 | 1 | 1 | |
| | 4515050 | Front Frame Side R/H | 1 | 1 | 1 | 1 | |

* NOT ILLUSTRATED

RECOMMENDED STOCK PARTS

GARLAND PARTS IDENTIFICATION
Master Series Heavy Duty Gas Upright Broiler
models XM100XRM / XM100XRCM / XM100XSM / M100XTM

COMPONENTS

| ITEM | PART # | DESCRIPTION | QTY | | | | CRITICAL |
|------|-----------------|---|---------|----------|---------|---------|----------|
| | | | X100XRM | X100XRCM | X100XSM | X100XTM | |
| 31 | G02024-01-8 | Carriage Assy. | 1 | 1 | 1 | 1 | |
| 32 | G01989-1-8 | Post Bearing | 2 | 2 | 2 | 2 | |
| 33 | F5 | 1/4-20 X 1.25" Hex Socket Screw | 2 | 2 | 2 | 2 | |
| 34 | 4516044 | Air Deflector R/H | 1 | 1 | 1 | 1 | |
| | 4516043 | Air Deflector L/H | 1 | 1 | 1 | 1 | |
| 35 | 1039602 | Grey Ball Knob | 1 | 1 | 1 | 1 | |
| 36 | 4516744 | Rack Lifting Handle Assy. | 1 | 1 | 1 | 1 | |
| 37 | 4515577 | Broiler Ratchet | 1 | 1 | 1 | 1 | |
| 38 | G6152-40 | Oven Rack | 1 | 1 | 1 | 1 | |
| 39 | G01245-1 | Broiler Spring | 2 | 2 | 2 | 2 | |
| 40 | G01246-1-8 | Spring Hook | 2 | 2 | 2 | 2 | |
| 41A | 2146800 | Illuminated Power Switch  | 1 | 1 | 1 | 1 | |
| 41B* | 4520240 | Switch Relocation Kit Note: Use this Kit to relocate the illuminated power switch from the corner column of the broiler to the valve panel of the range base for broilers manufactured UP TO serial# 0703100164258 / 28-MAR-2007. | 1 | 1 | 1 | 1 | |
| 41C | 3011400 | PVC Clear Cap With Bezel  | 1 | 1 | 1 | 1 | |
| 42 | 2655800 | 7/16 Tubing - Burner Orifice to Tee | 4 | 4 | 4 | 4 | |
| 43 | G01168-1 | 7/16 Compression Tee | 2 | 2 | 2 | 2 | |
| 44 | G01243-1 | Straight Connector - 1/4NPT X 7/16cc | 4 | 4 | 4 | 4 | |
| 45 | 4515723 | Pilot Shield | 2 | 2 | 2 | 2 | |
| 46 | 3093000 | Pilot | 2 | 2 | 2 | 2 | C |
| 47 | 3093300 | Pilot Mounting and Body Enclosure | 1 | 1 | 1 | 1 | |
| 48 | 4513669 | 1/8 Tubing - Left Pilot | 1 | 1 | 1 | 1 | |
| 49 | 4513670 | 1/8 Tubing - Right Pilot | 1 | 1 | 1 | 1 | |
| 50 | G6424 | Glider Bolt Hex Head 3/8-16 x 2 | 2 | 2 | 2 | 2 | |
| 51 | G01244-1 | 1 11/16 x 1/2 Large Roller Bearing | 6 | 6 | 6 | 6 | C |
| 52 | G01247-3 | Rear Bushing2 | 2 | 2 | 2 | 2 | |
| 53 | G01247-1-8 | Washer Bearing | 2 | 2 | 2 | 2 | |
| 54 | G01247-2 | Front Bearing | 2 | 2 | 2 | 2 | |

* NOT ILLUSTRATED

RECOMMENDED STOCK PARTS

GARLAND PARTS IDENTIFICATION
Master Series Heavy Duty Gas Upright Broiler
models XM100XRM / XM100XRCM / XM100XSM / M100XTM

COMPONENTS

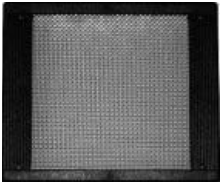
| ITEM | PART # | DESCRIPTION | QTY | | | | CRITICAL |
|------|-------------|--|---------|----------|---------|---------|----------|
| | | | X100XRM | X100XRCM | X100XSM | X100XTM | |
| 55 | F56 | Hex Head Bolt 5/16-18 x 1 | 4 | 4 | 4 | 4 | |
| 56 | 2682799 | Rack Frame Assy. | 1 | 1 | 1 | 1 | |
| 57A | 4520650 | Broiler Rack (Std.) | 2 | 2 | 2 | 2 | |
| 57B | 2684500 | Broiler Rack Assy. - Extended (Opt.) | 5 | 5 | 5 | 5 | |
| 58 | 2682800 | Drip Chute | 1 | 1 | 1 | 1 | |
| 59 | 2682200 | Broiler Rack Front Veneer (Std.) | 1 | 1 | 1 | 1 | |
| 60 | 2682201 | Broiler Rack Front Veneer (Opt.Extended Rack.) | 1 | 1 | 1 | 1 | |
| 61 | G01904-03-9 | Handle Assy. | 1 | 1 | 1 | 1 | |
| 62 | 2682300 | Drip Tray Stop | 1 | 1 | 1 | 1 | |
| 63 | 2682601 | Handle End - L/H | 1 | 1 | 1 | 1 | |
| | 2682600 | Handle End - R/H | 1 | 1 | 1 | 1 | |
| 64 | 4517367 | 7/16" Tubing - Right Valve to Burner | 1 | 1 | 1 | 1 | |
| 65 | 4517366 | 7/16" Tubing - Left Valve to Burner | 1 | 1 | 1 | 1 | |
| 66 | 4516047 | 3/16" Tubing - Left Pilot | 1 | 1 | 1 | 1 | |
| 67 | 4516048 | 3/16" Tubing - Right Pilot | 1 | 1 | 1 | 1 | |
| 68 | 4516664 | Burner Box Back (Std.) | 1 | | 1 | | |
| | 4516666 | Burner Box Back (Rear Gas) | 1 | | 1 | | |
| | 4517119 | Burner Box Back (Std.) | | 1 | | | |
| | 4517120 | Burner Box Back (Rear Gas) | | 1 | | | |
| | 4517374 | Burner Box Back (Std.) | | | | 1 | |
| | 4517375 | Burner Box Back (Rear Gas) | | | | 1 | |
| 69 | 4516656 | Enclosure Bracket | 1 | 1 | 1 | 1 | |
| 70 | 1139598 | Lower Oven Flue Box | 1 | 1 | 1 | 1 | |
| 71 | 4516651 | Rear Electrical Cover | 1 | 1 | 1 | 1 | |
| 72 | 4516447 | Inner Valve Panel Right | 1 | 1 | 1 | 1 | |
| 73 | 4520242 | Inner Valve Panel | 1 | 1 | 1 | 1 | |
| 74 | 1132806 | Burner Box Side L/H | 1 | 1 | 1 | | |
| | 1132807 | Burner Box Side L/H | 1 | 1 | 1 | | |
| | 1132804 | Burner Box Side R/H | 1 | 1 | 1 | | |
| | 1132805 | Burner Box Side R/H | 1 | 1 | 1 | | |
| | 2247602 | Burner Box Side L/H | | | | 1 | |
| | 2247603 | Burner Box Side L/H | | | | 1 | |
| | 2247600 | Burner Box Side R/H | | | | 1 | |
| | 2247601 | Burner Box Side R/H | | | | 1 | |
| 75 | 2512600 | Burner Box Bottom | 1 | 1 | 1 | | |
| | 2247000 | Burner Box Bottom | | | | 1 | |
| 76 | 2247400 | Secondary Burner Box Bottom | | | | 1 | |
| 77 | 4515031 | Grease Hopper | 1 | 1 | 1 | 1 | |
| 78 | 2190699 | Front Rail Assy. | 1 | 1 | 1 | 1 | |

* NOT ILLUSTRATED

RECOMMENDED STOCK PARTS

GARLAND PARTS IDENTIFICATION
Master Series Heavy Duty Gas Upright Broiler
models XM100XRM / XM100XRCM / XM100XSM / M100XTM

COMPONENTS


| ITEM | PART # | DESCRIPTION | QTY | | | | CRITICAL |
|------|----------------|--|---------|----------|---------|---------|----------|
| | | | X100XRM | X100XRCM | X100XSM | X100XTM | |
| 79 | 4517468 | Grease Box Front | 1 | 1 | 1 | 1 | |
| 80 | 4515573 | Grease Drawer Assy. | 1 | 1 | 1 | 1 | |
| 81 | 4520241 | Valve Panel | 1 | 1 | 1 | 1 | |
| 81A* | 4523510 | Valve Panel W/Switch | | | 1 | 1 | |
| 82 | 2247703 | Secondary Valve Panel | | | | 1 | |
| 83 | 2230000 | 7/16 Tubing FD Control to Comp. Union | 1 | 1 | | | |
| 84 | G6036-01-8 | Door Hinge Assy. | 2 | 2 | 2 | 2 | |
| 85 | 1439794 | Oven Door Lining Assy. | 1 | 1 | 1 | 1 | |
| 86 | 1138399 | Broiler Insert Box Assy. | 1 | 1 | 1 | 1 | |
| 87 | 1080714 | Oven Door Panel | 1 | 1 | 1 | 1 | |
| 88 | 3010000 | Handle Spacer Insert | 2 | 2 | 2 | 2 | |
| 89 | 3007300 | Handle End | 2 | 2 | 2 | 2 | |
| 90 | 3017000 | Door Handle | 1 | 1 | 1 | 1 | |
| 91 | 4513619 | Hose Barb | 1 | 1 | 1 | 1 | |
| 92 | 4515596 | Mounting Plate | 1 | 1 | 1 | 1 | |
| 93 | 4513620 | Reducing Bushing | 1 | 1 | 1 | 1 | |
| 94 | 4513621 | Plastic Elbow | 1 | 1 | 1 | 1 | |
| 95 | 4515035 | Plenum | 1 | 1 | 1 | 1 | |
| 96 | 4516836 | Fan | 1 | 1 | 1 | 1 | C |
| 97A | 4516838 | Brackets - Fan Screen  | 2 | 2 | 2 | 2 | |
| 97B | 4516837 | Fan Screen  | 1 | 1 | 1 | 1 | |
| 98 | 4515103 | Grease Box Cover | 2 | 2 | 2 | 2 | |
| 99 | 2208001 | End Enclosure L/H (Opt.) | 1 | 1 | 1 | 1 | |
| 100 | 2208000 | End Enclosure R/H (Opt.) | 1 | 1 | 1 | 1 | |
| 101 | 2544101 | Manifold Bracket Extension L/H | 1 | 1 | 1 | 1 | |
| 102 | 2544100 | Manifold Bracket Extension R/H | 1 | 1 | 1 | 1 | |
| 103 | 2198100 | Valve Connector Fitting - 12mm | 1 | 1 | | | |
| 104 | 2572600 | 7/16 Tubing - Oven Valve to FD Control | 1 | 1 | | | |
| 105 | 4515783 | Manifold Assy. | 1 | 1 | 1 | 1 | |
| | 4515935 | Manifold Assy. Rear Gas (Opt.) | 1 | 1 | 1 | 1 | |
| 106 | G02335-1 | Pipe Cap - 1 1/4"NPT (Opt.) | 1 | 1 | 1 | 1 | |
| 107 | G01248-1 | 1/4 X 1/4 Double Pilot Valve Assy. | 1 | 1 | 1 | 1 | |
| 108 | G02251-1 | Pressure Test Spigot | 1 | 1 | 1 | 1 | |

* NOT ILLUSTRATED

RECOMMENDED STOCK PARTS

GARLAND PARTS IDENTIFICATION
Master Series Heavy Duty Gas Upright Broiler
models XM100XRM / XM100XRCM / XM100XSM / M100XTM

COMPONENTS

| ITEM | PART # | DESCRIPTION | QTY | | | | CRITICAL |
|------|-------------------|--|---------|----------|---------|---------|----------|
| | | | X100XRM | X100XRCM | X100XSM | X100XTM | |
| 109 | G02352-1 | Compression Elbow | 2 | 2 | 2 | 2 | |
| 110 | 4516424 | Sub-Manifold Assy. | 1 | 1 | 1 | 1 | |
| 111 | 1095100 | Broiler Valve - Natural Gas Opt. | 2 | 2 | 2 | 2 | C |
| | 1095101 | Broiler Valve - LP Gas Opt. | 2 | 2 | 2 | 2 | C |
| 112 | 3043205 | Valve Stem Hub | 2 | 2 | 2 | 2 | |
| 113 | 3043100 | Knob - Broiler | 2 | 2 | 2 | 2 | C |
| 114 | 4601583 | Sentry/Master Oven Valve | 1 | 1 | | | C |
| 115 | 3043201 | Valve Stem Hub | 1 | 1 | 1 | 1 | |
| 116 | 3043101 | Knob Oven Valve | 1 | 1 | 1 | 1 | C |
| 117 | G03145-048 | FD Control Assy. | 1 | 1 | | | C |
| 118 | 3043203 | Valve Stem Hub | 1 | 1 | | | |
| 119 | 3043100 | Knob - FD Control | 1 | 1 | | | C |
| 120 | 4516054 | 7/16" Tube - Solenoid to Manifold | 1 | 1 | 1 | 1 | |
| 121 | 4516137 | Component Mounting. Plate | 1 | 1 | 1 | 1 | |
| 122 | 4516136 | Solenoid Mounting Bracket | | 1 | 1 | 1 | |
| 123 | 2573000 | Terminal Block | 1 | 1 | 1 | 1 | |
| 124 | 3096800 | Air Pressure Switch | 1 | 1 | 1 | 1 | |
| 125 | 4517380 | Flexible PVC Hose | 1 | 1 | 1 | 1 | |
| 126A | G02965-1 | Solenoid Valve | | 1 | 1 | 1 | C |
| 126B | 4521194 | Solenoid Valve w/Bracket | 1 | | | | C |
| 127 | 1095499 | Straight Connector - 3/8NPT X 7/16cc | 2 | 2 | 2 | 2 | |
| 128 | 4516053 | 7/16" Tube - Manifold to Solenoid | 1 | 1 | 1 | 1 | |
| 129 | G7075 | 1 1/4" Union | 1 | 1 | 1 | 1 | |
| 130 | 4516839 | Fan Filter | 1 | 1 | 1 | 1 | C |
| | |  | | | | | |
| 131 | 4516987 | Cover Plate | 2 | 2 | 2 | 2 | |
| 132 | 4517010 | Grease Diverter Assembly | 1 | 1 | 1 | 1 | |
| 133 | 4520192 | Switch Box | 1 | 1 | 1 | 1 | |
| 134 | 4512759 | Overlay, On / Off - 30x11mm | 1 | 1 | 1 | 1 | |
| 135 | G01487-8 | Bushing | 1 | 1 | 1 | 1 | |

* NOT ILLUSTRATED

RECOMMENDED STOCK PARTS

GARLAND PARTS IDENTIFICATION
Master Series Heavy Duty Gas Upright Broiler
models XM100XRM / XM100XRCM / XM100XSM / M100XTM

CRITICAL & RECOMMENDED STOCK PARTS LIST

| PART# | DESCRIPTION |
|------------|------------------------------------|
| 1095100 | Broiler Valve - Natural Gas Opt. |
| 1095101 | Broiler Valve - LP Gas Opt. |
| 4601583 | Sentry/Master Oven Valve |
| 3043100 | Knob - Broiler |
| 3043100 | Knob - FD Control |
| 3043101 | Knob Oven Valve |
| 3093000 | Pilot |
| 4516136 | Solenoid Mounting Bracket |
| 4516836 | Fan |
| 4516839 | Fan Filter |
| 4521194 | Solenoid Valve w/Bracket |
| G01244-1 | 1 11/16 x 1/2 Large Roller Bearing |
| G02965-1 | Solenoid Valve |
| G03145-048 | FD Control Assy. |

GARLAND PARTS IDENTIFICATION

Revision History

| REV | PAGE#** | ITEM#** | NOTES | DATE |
|-----|----------|---------------|---|-----------|
| 0 | | | Released Part List | NOV 25/03 |
| 1 | 5 | 1 | "Description changed, also part number 2676300 [Flue Diverter (Opt. with Stainless Back Veneer)] is been removed." | JAN 16/07 |
| | 6 | 57A | Part number changes - was G01544-01-5 | |
| | 8 | 122 | Quantity deleted from M100XRM model - was 1 | |
| | | 126A | Quantity deleted from M100XRM model - was 1 | |
| | | 126B | New part number added | |
| 2 | 6 | 41B | New part number added | JUN 19/07 |
| 3 | 4 | | New drawing | AUG 10/07 |
| | 6 | 41B, 41C | Part number added | |
| | 7 | 81 | Part number 4517372 (Valve Panel) deleted | |
| | 7 | | New part number - was Part # 4515483 | |
| | 8 | 133, 134,135 | New parts number added | |
| 9 | | Photo added | | |
| 4 | 7 | 81A | New part number added | NOV 9/07 |
| | 5,6,7,8 | | Critical parts column added | |
| 5 | 10 | 97A, 97B | One single p/n 4516838 was assigned to both the Fan Screen and the Screen Brackets. New p/n - 4516837 is created for the Fan Screen and 4516838 is assigned to the Brackets. | JAN 19/12 |
| | 10, 11 | 97A, 97B, 130 | Added photos. | |
| | 4, 5, 12 | | Added introductory information and critical parts table. | |
| 6 | 11 | 114 | New FF Valve 4601583. Was 2513399. Direct Replacement. ECO-000437I | JUN 23/16 |
| | | | | |
| | | | | |

** Page#/Item# reference the specific page/item numbers in the corresponding Revision version only.



1-844-724-CARE • www.mtwkitchencare.com