

Parts Catalog



G12

Slicing Machine

Model: G12

11/02/18 Rev E, Serial Number 509624 and Up
IMPORTANT!

TO EXPEDITE SHIPMENT OF PARTS, ALWAYS SPECIFY MODEL, REV,
PART NUMBER, AND SERIAL NUMBER OF UNIT.

GLOBE FOOD EQUIPMENT COMPANY

2215 East River Road
Dayton, Ohio 45439

Parts Department

Toll Free 1-800-745-6238 · Fax (937) 290-0585

E-Mail: info@globefoodequip.com

Website: www.globefoodequip.com

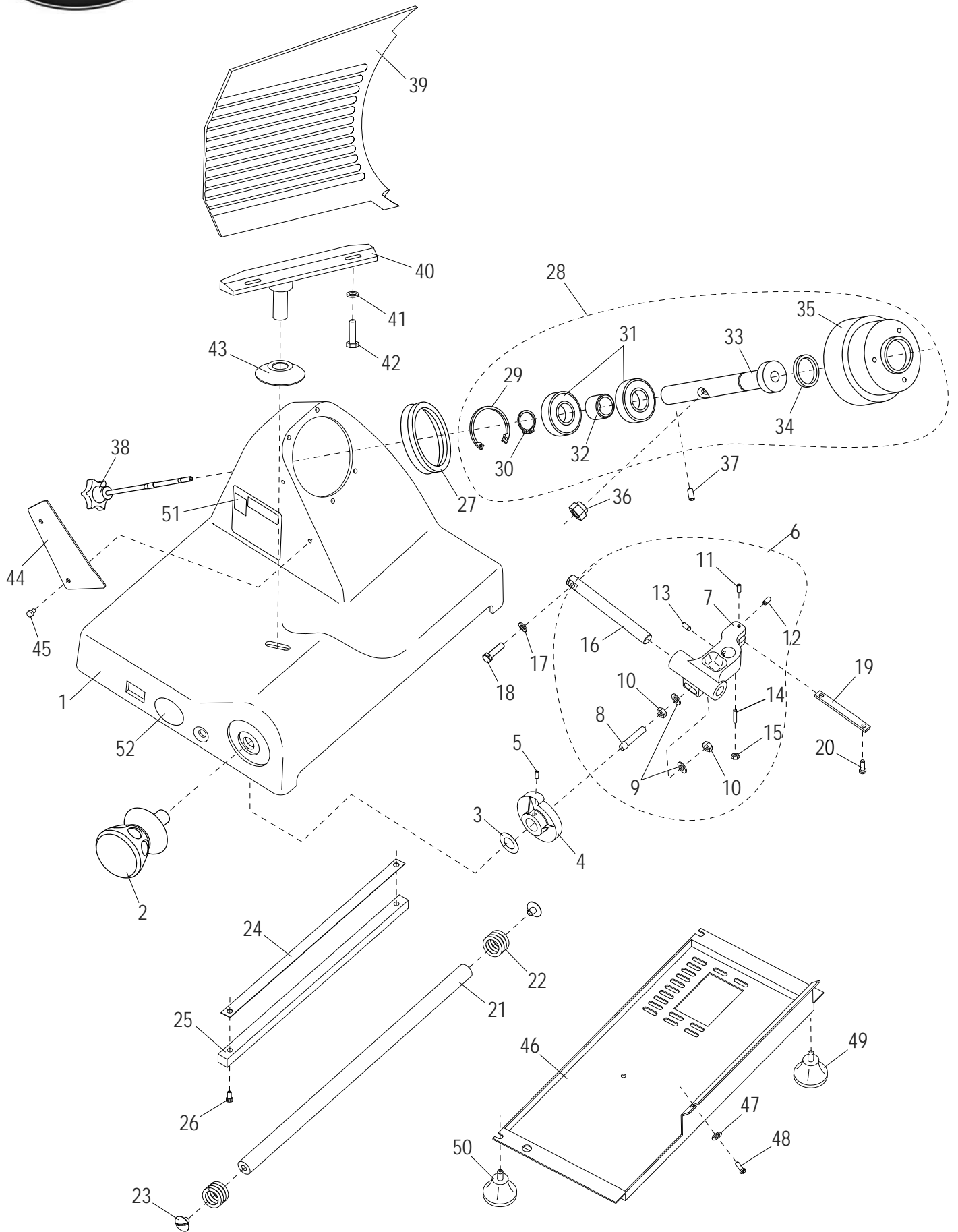
Not for resale

Table of Contents

Description	Page
G12 Base Components	4
G12 Chute Components	6
G12 Knife and Sharpener Components	8
G12 Electrical Components	10
G12 Wiring Diagram - 115, 50_60 Hz, 1PH Up to SN 530475	12
G12 Wiring Diagram - 115, 50_60 Hz, 1PH SN 530476 and Up	13



G12 Base Components



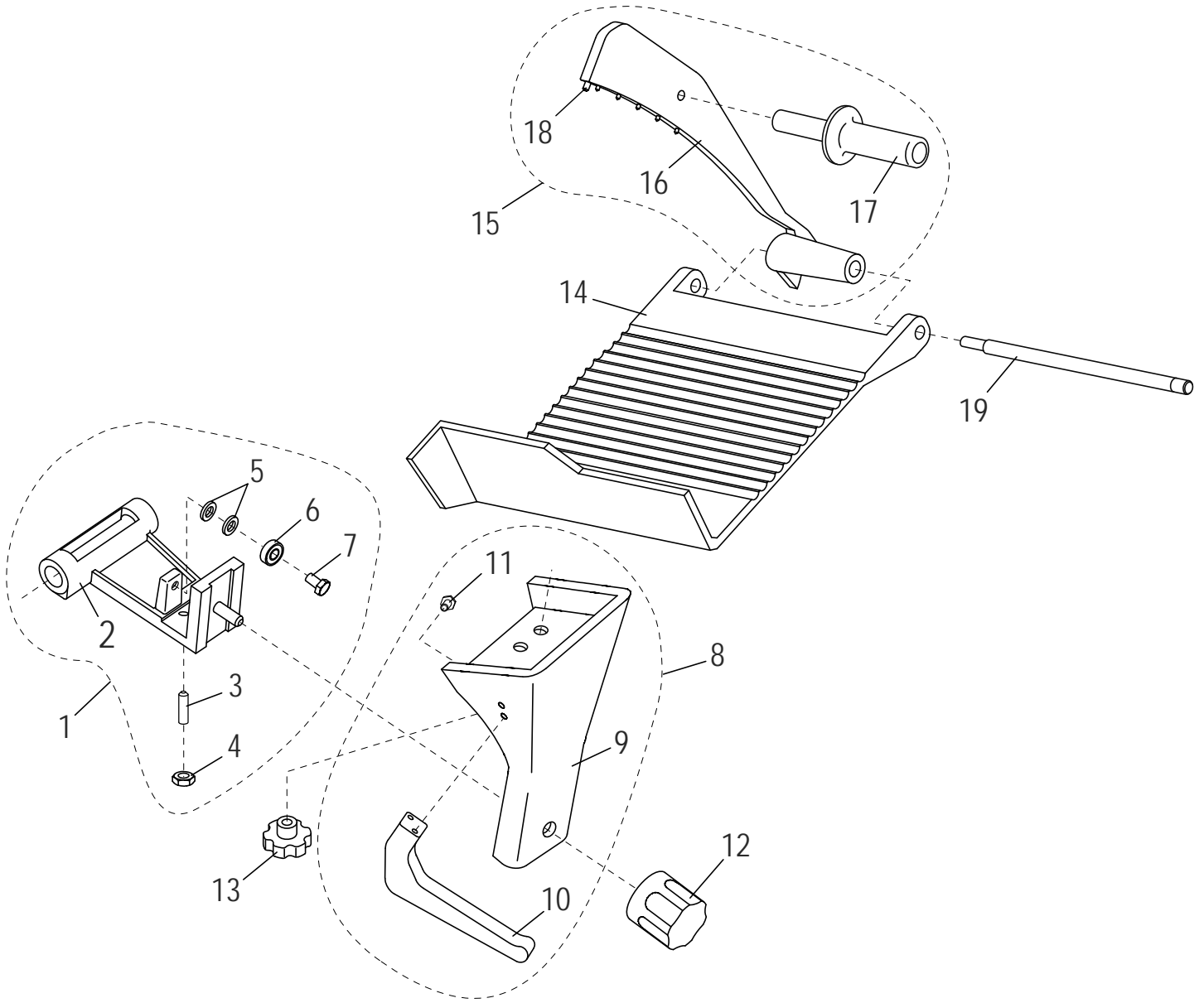


G12 Base Components

Item	Part Number	Description	Qty	Serial Number
1		Slicer Base	1	
2	M00209	Table Adjustment Knob	1	
3	M003	Wave Washer	1	
4	M004	Table Adjustment Cam	1	
5	H00181	Set Screw	2	
6	M305	Table Slide Assy (Incl. items 7-16)	1	
7		Table Slide	1	
8	M013	Stud, Cam Actuator	1	
9	H00191	Flat Washer M8, 8.4 IDx16 ODx1.4-1.8mm thick DIN 125 - Zn	2	
10	H00192	Hex Nut M8-1.25,13mm Width,4 mm Height-Zn	2	
11	H00182	Set Screw M5x10 Flat Pt Slotted - Zn	1	
12	H00185	Set Screw, Table Slide End	1	
13	H00186	Set Screw M8-1.25x10 Cup Pt. Hex Socket - BO	2	
14	H00188	Set Screw, Table Slide Bottom	1	
15	H00028	Hex Nut M5 - Zn	1	
16	MR36	Table Slide Rod	1	
17	H00191	Flat Washer M8, 8.4 IDx16 ODx1.4-1.8mm thick DIN 125 - Zn	2	
18	H00116	Hex Head Screw M6-1.0x20 - Zn	2	
19	M016	Table Slide Plate	1	
20	H00061	Hex Head Screw M5x10, Zinc	2	
21	M059	Carriage Slide Rod	1	
22	M061	Carriage Spring	2	
23	M060	Slide Rod Screw	2	
24	M063	Wear Strip, Slide Bar	1	
25	M062	Slide Bar, Square	1	
26	H00056	Slide Bar Screw	2	
27	MG177/5	V Ring, Knife Seal VA 80	1	
28	M319	Knife Hub Assembly (Incl. items 29-35)	1	
29		Retaining Ring, Internal	1	
30		Retaining Ring, External	1	
31		Bearing	2	
32		Spacer, Knife Pulley	1	
33		Shaft, Knife Hub	1	
34		Oil Seal, Hub	1	
35		Pulley, Knife Hub	1	
36	MCR61	Microswitch Mounting Bolt	1	
37	H00184	Knife Shaft Set Screw	1	
38	M00225	Knife Cover Release Knob	1	
39	M00232	Table	1	
40	M00227	Table Support	1	
41	H00191	Flat Washer M8, 8.4 IDx16 ODx1.4-1.8mm thick DIN 125 - Zn	2	
42	H00196	Table Support Screw	2	
43	M00228	Hole Cover, Base	1	
44	M097	Knife Wiper	1	
45	MCC23	Thumb Screw	2	
46	M113	Bottom Cover	1	
47	H00063	Flat Washer, M5, Zinc	1	
48	H00061	Hex Head Screw M5x10, Zinc	1	
49	M115	Back Foot	2	
50	M00229	Front Foot	2	
51	M91022	Label, Warning	1	
52	M91021	Label, Globe Logo	1	



G12 Chute Components



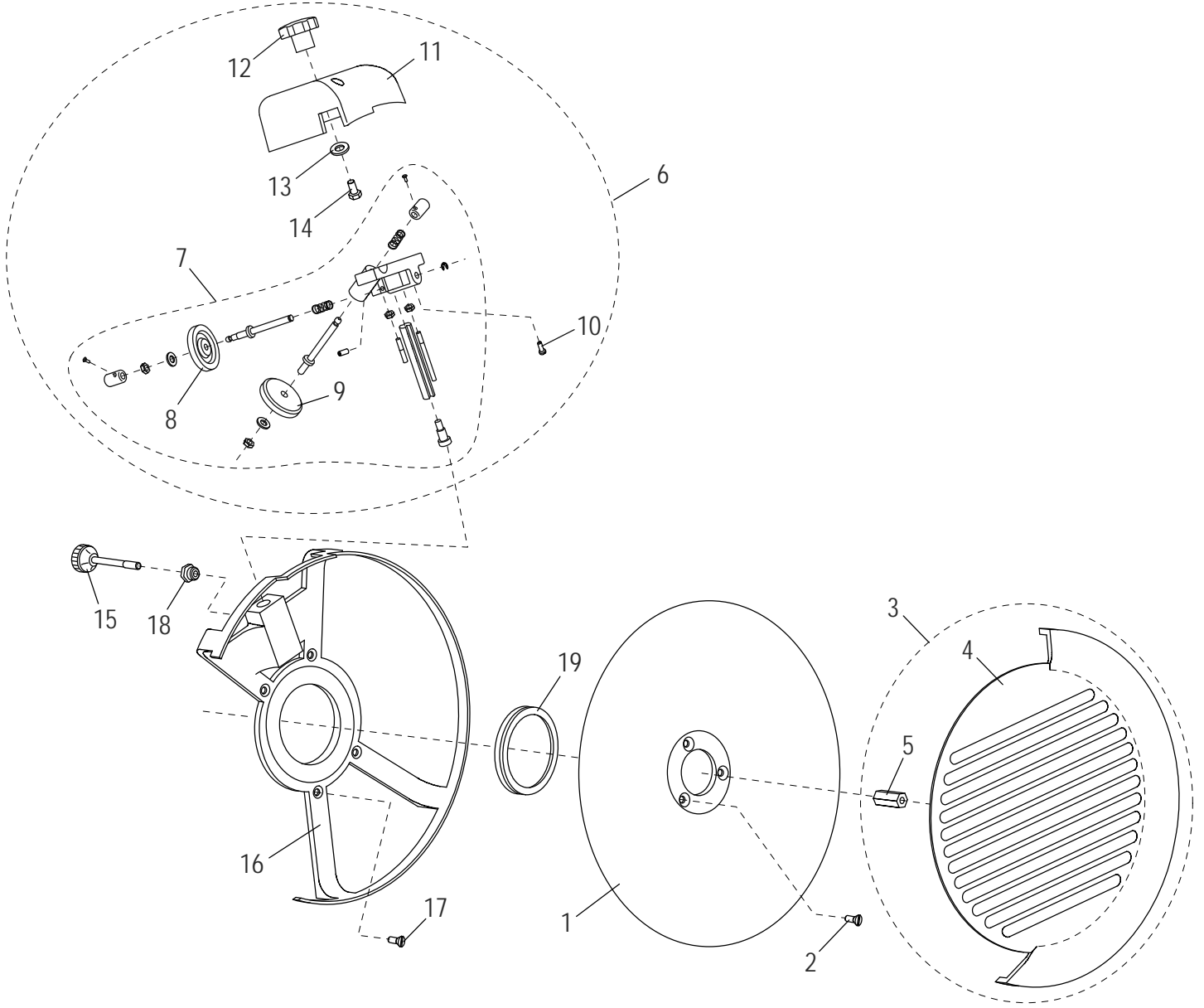


G12 Chute Components

Item	Part Number	Description	Qty	Serial Number
1	M352	Chute Slide Assy (Incl. items 2-7)	1	
2		Chute Slide	1	
3	M053	Brass Stud	1	
4	H00192	Hex Nut M8-1.25,13mm Width,4 mm Height-Zn	1	
5	H00191	Flat Washer M8, 8.4 IDx16 ODx1.4-1.8mm thick DIN 125 - Zn	2	
6	M056	Bearing	1	
7	H00117	Hex Head Screw M8x20 - Zn	1	
8	M00282	Chute Support Assembly (Incl. items 9-11)	1	
9		Chute Support	1	
10	M067	Chute Support Handle	1	
11	H00156	Screw M6-1.0x12mm, Chute Support Handle	2	
12	M00268	Chute Support Knob	1	
13	M00254	Chute Release Knob	1	
14	M00386	Chute	1	
14	M01068	Chute	1	518220 ->
15	M00388	End Weight Assembly (Incl. 16-18)	1	
15	M01069	End Weight Assembly (Incl. 16-18)	1	518220 ->
16		End Weight	1	
17	M00261	End Weight Handle	1	
18	M01070	End Weight Bumper	1	518220 ->
18	MC39	Bumper, End Weight	1	
19	M00283	End Weight Rod	1	
19	M01071	End Weight Rod	1	518220 ->



G12 Knife and Sharpener Components



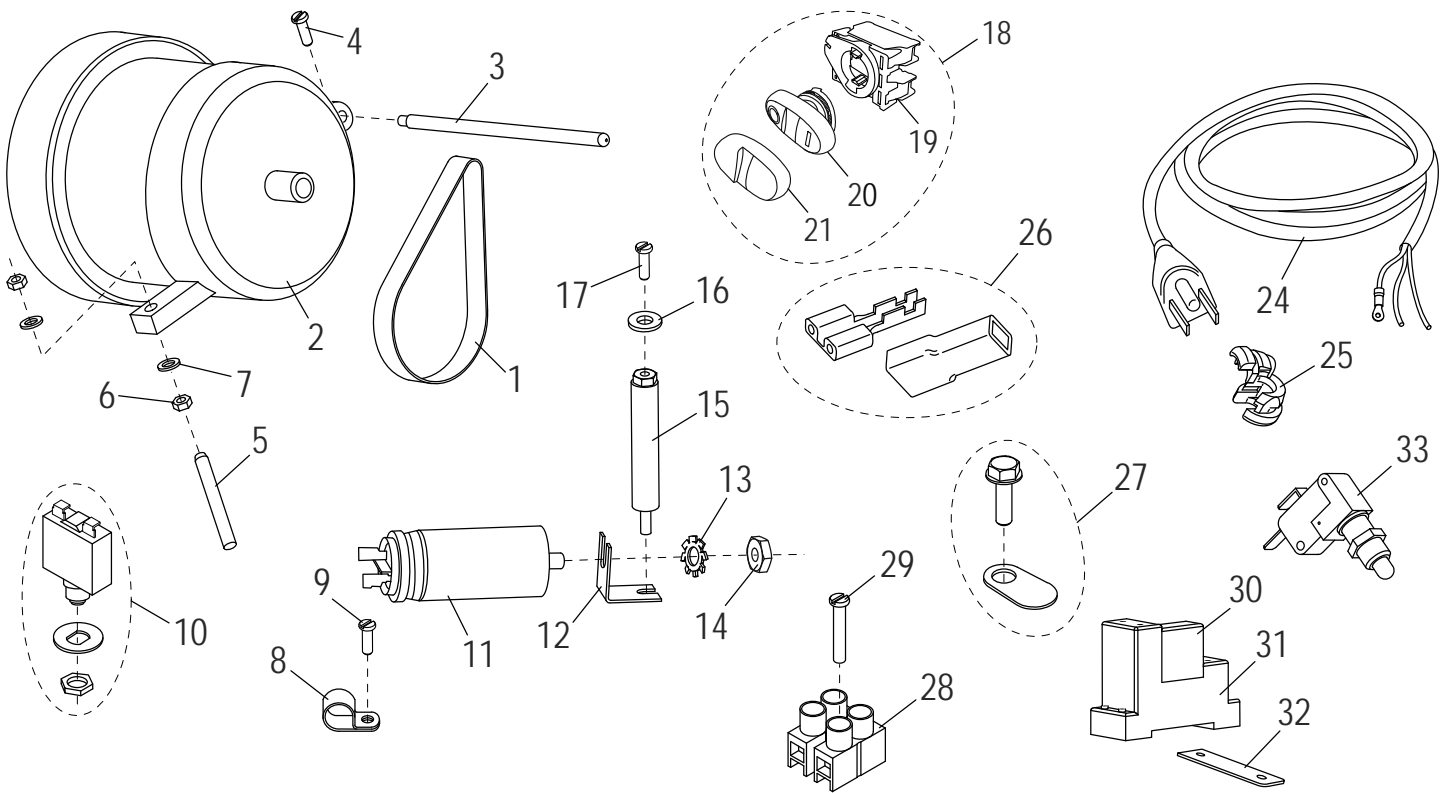


G12 Knife and Sharpener Components

Item	Part Number	Description	Qty	Serial Number
1	M047	Knife	1	
2	H00201	Screw, Knife Mounting	3	
3	M349	Knife Cover (Incl. items 4-5)	1	
4		Knife Cover	1	
5	M049A	Knife Cover Insert	1	
6	M377	Sharpener Assembly with Cover (Incl. items 7-14)	1	
7	MC017	Knife Sharpener Assembly (Incl. items 8-9)	1	
8	M092	Deburring Stone	1	
9	MCC17	Sharpening Stone	1	
10	H00187	Cheese Hd Screw M5-0.8x16 Slotted - Zn	2	
11	M074	Sharpener Cover	1	
12	M075	Sharpener Cover Knob	1	
13	M035	Washer, Flat M6, ID-6MM, OD-12MM, THICK-1.5MM	1	
14	H00197	Hex Hd Screw M6x15 - Zn	1	
15	M096	Release Knob, Sharpener	1	
16	M044	Knife Rim Guard	1	
17	H00435	Screw, Rim Guard	4	
18	M045	Insert, Knife Rim Guard	1	
19	MGI77/5	V Ring, Knife Seal VA 80	1	



G12 Electrical Components





G12 Electrical Components

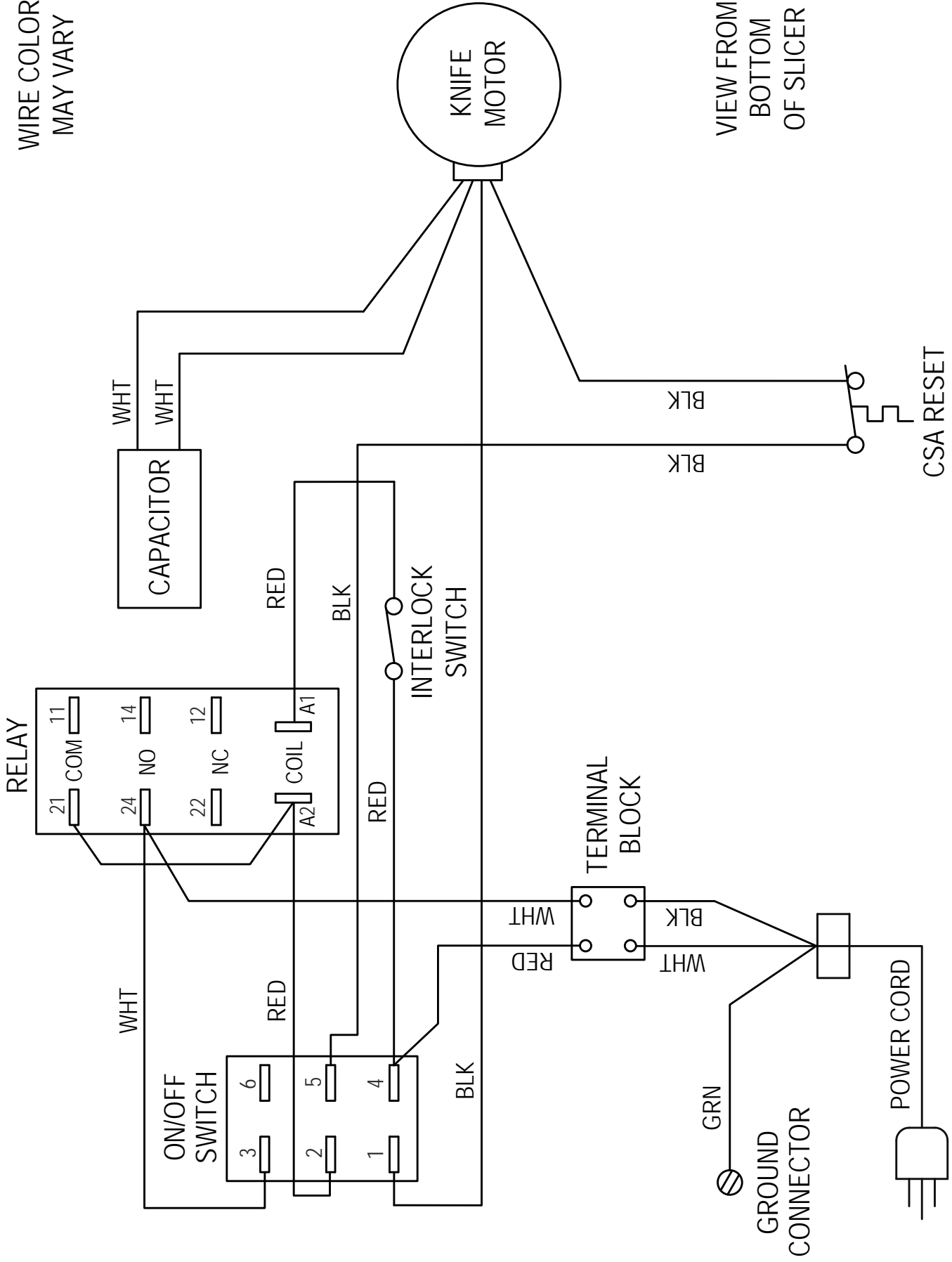
Item	Part Number	Description	Qty	Serial Number
1	M024	Drive Belt	1	
2	M030	Knife Motor	1	
3	M031	Post, Motor Pivot	1	
4	H00189	Cheese Hd Screw M4-0.7x10 Slotted - Zn	1	
5	M033	Set Screw	1	
6	M034	Hex Nut	2	
7	M035	Washer, Flat M6, ID-6MM, OD-12MM, THICK-1.5MM	2	
8	M037	Cable Clamp	1	
9	H00061	Hex Head Screw M5x10, Zinc	1	
10	M038	Motor Reset Switch	1	
11	M039	Capacitor, 16 µf	1	
12		Bracket, Capacitor Mounting	1	
13	H00335	Lock M8 Washer	1	
14	H00192	Hex Nut M8-1.25,13mm Width,4 mm Height-Zn	1	
15	M00358	Standoff, Cover Spacer	1	
16	M035	Washer, Flat M6, ID-6MM, OD-12MM, THICK-1.5MM	1	
17	H00061	Hex Head Screw M5x10, Zinc	1	
18	M02050	Power Switch Assembly	1	530476 ->
19		Power Switch	1	530476 ->
20		Switch	1	530476 ->
21	M02047	Cover	1	530476 ->
22	MCR69	Power Switch (Not Shown)	1	->530475
23	MCR59	Power Switch Cover (Not Shown)	1	->530475
24	M110	Power Cord & Plug	1	
25	M111	Strain Relief	1	
26	M00233	Female Terminal/Insulator Set	15	
27	M00334	Ground Screw/Marking Tab Set	1	
28	MB80/2	Terminal Block	1	
29	H00203	Terminal Block Mounting Screw	1	
30	MCR75	Relay	1	
31	MCR76	Relay Socket	1	
32	M00360	Relay Mounting Plate	1	
33	M026	Hub Assembly Microswitch	1	



G10 Wiring Diagram - 115, 50_60 Hz, 1PH Up to SN 530475

WIRE COLOR
MAY VARY

VIEW FROM
BOTTOM
OF SLICER





G10 Wiring Diagram - 115, 50_60 Hz, 1PH SN 530476 and Up

WIRE COLOR
MAY VARY

