

Parts Catalog



precisely!



G10E Slicer

SLICING MACHINE

MODEL: G10E

10-14-13N

IMPORTANT!

TO EXPEDITE SHIPMENT OF PARTS, ALWAYS SPECIFY MODEL, REV,
PART NUMBER, AND SERIAL NUMBER OF SLICER.

GLOBE FOOD EQUIPMENT COMPANY

2215 East River Road
Dayton, Ohio 45439

Parts Department

Toll Free 1-800-745-6238 • Fax (937) 290-0585

E-Mail: globeinfo@globeslicers.com

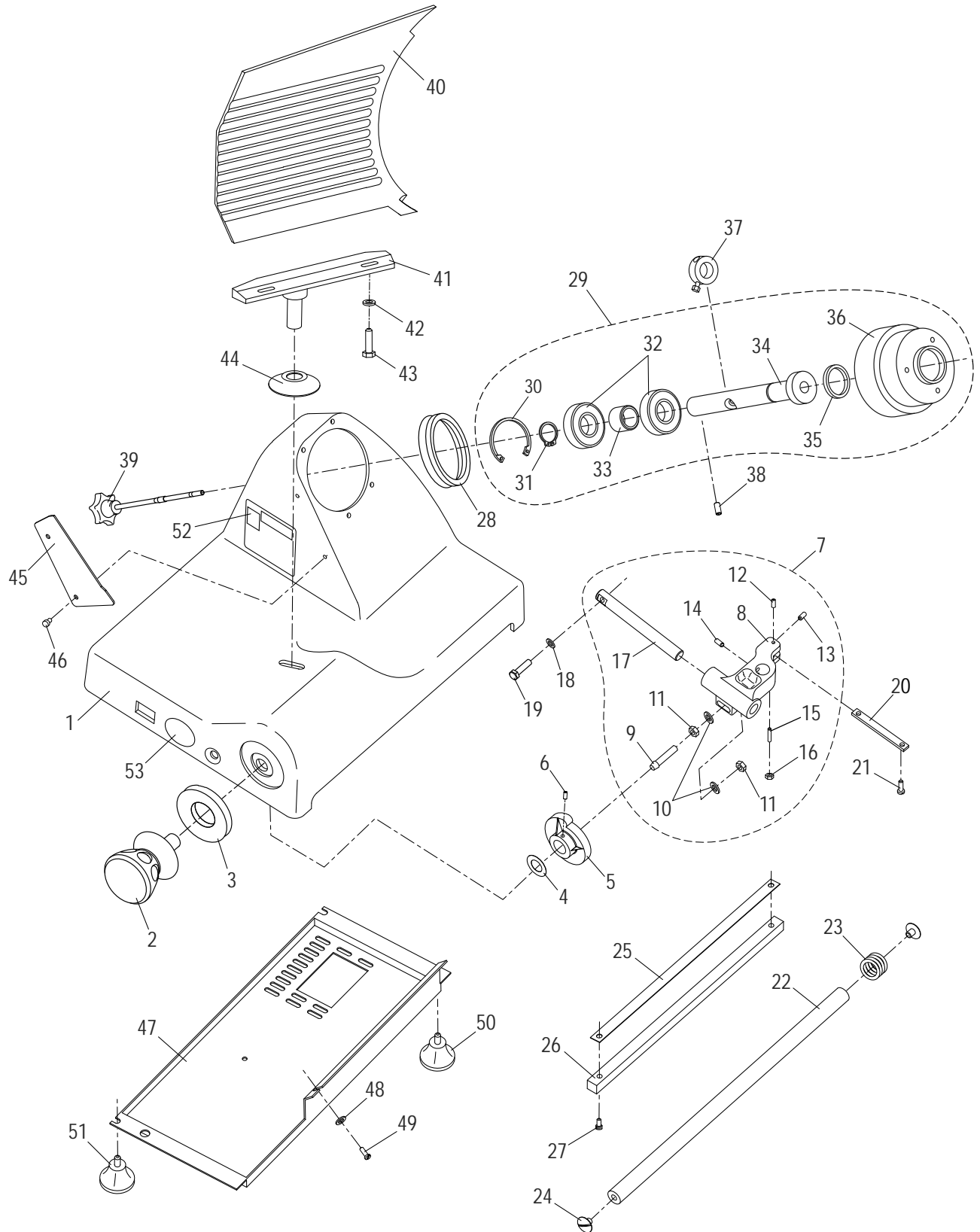
Website: www.globeslicers.com

Not for resale

TABLE OF CONTENTS

	Page
<u>Base Components</u>	1 - 2
<u>Chute Components</u>	3
<u>Knife & Sharpener Components</u>	4
<u>Electrical Components</u>	5
<u>Wiring Diagram</u>	6

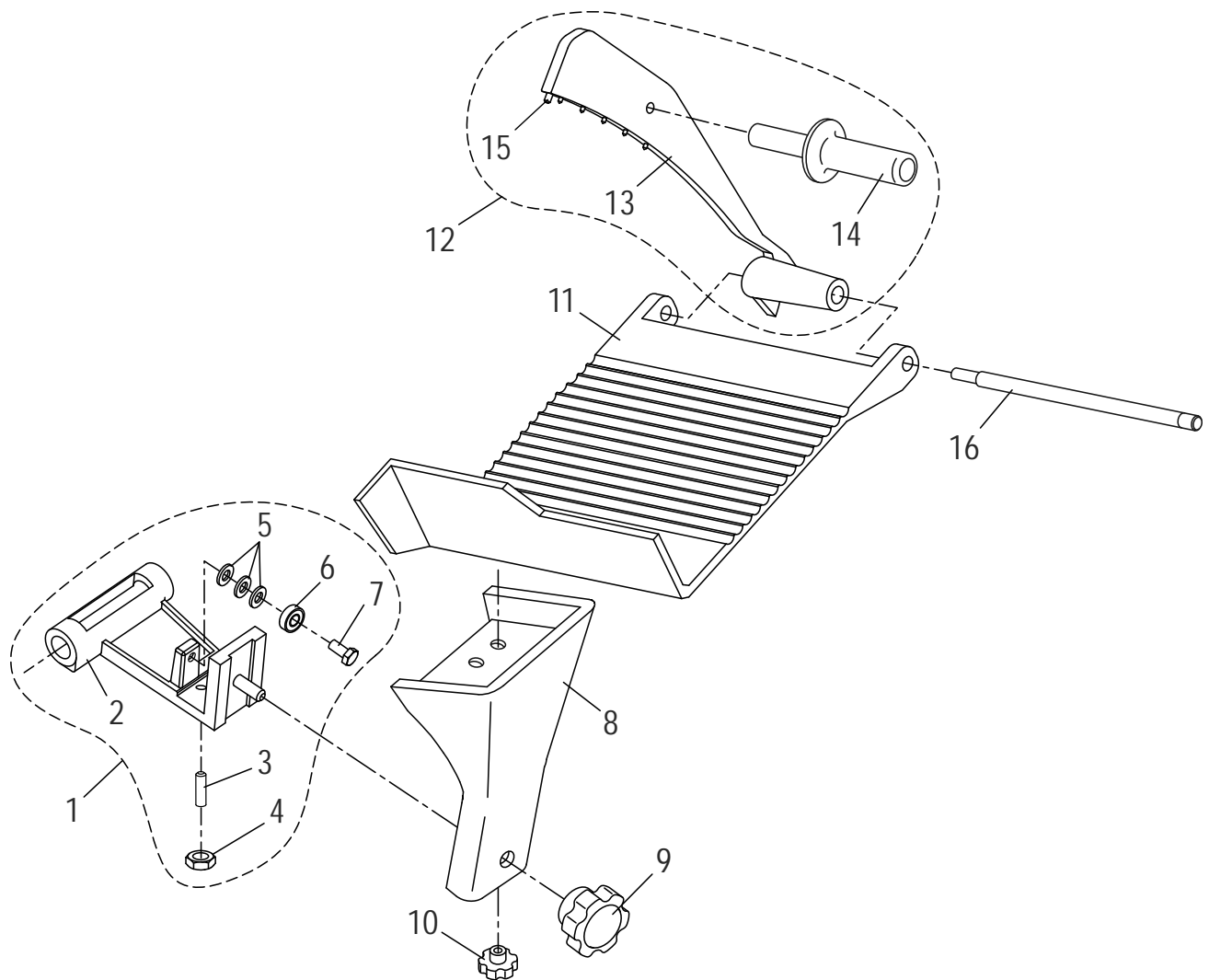
G10E BASE COMPONENTS



G10E BASE PARTS LIST

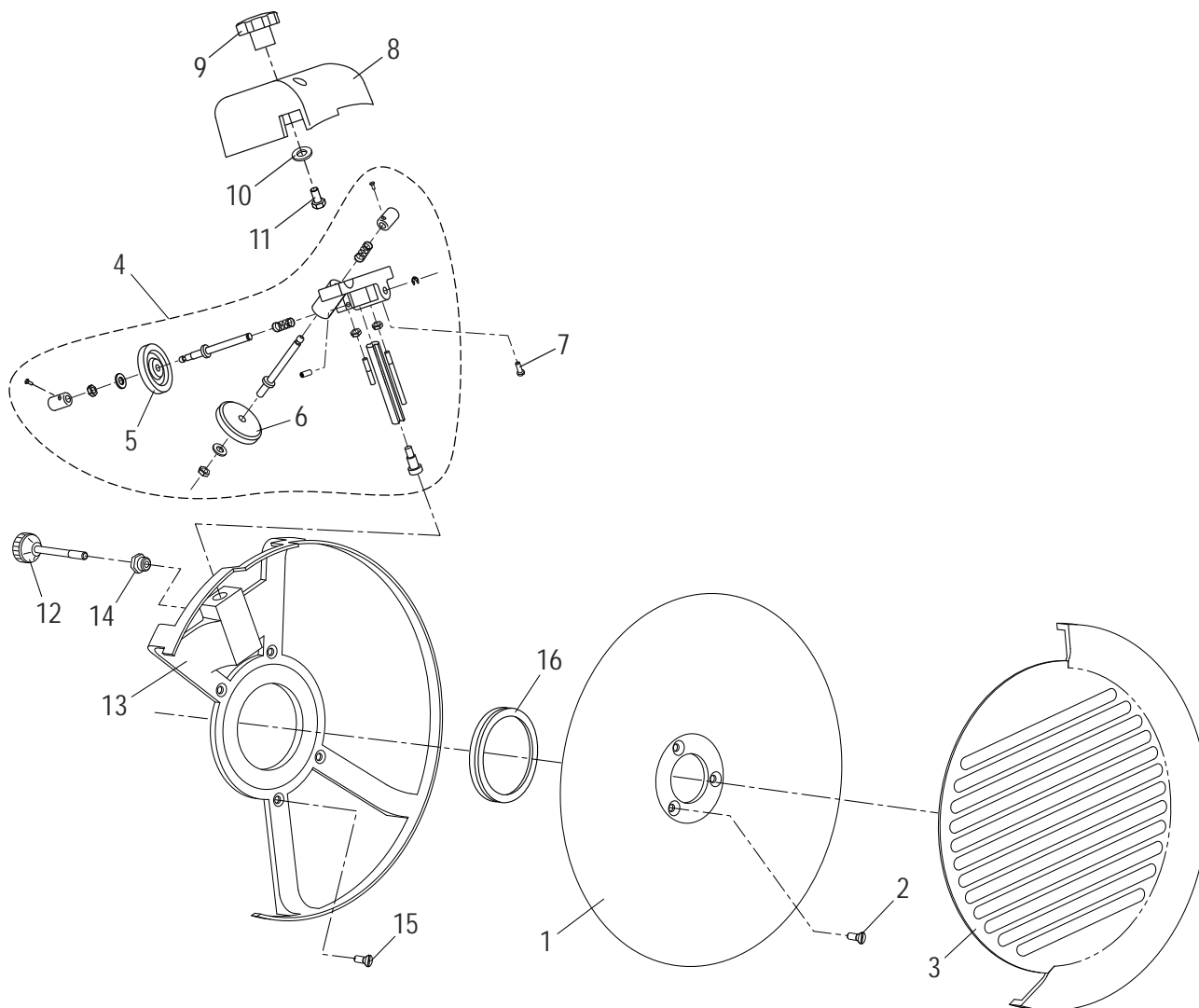
Item	Description	Qty	Part Number	Hardware
1	Slicer Base	1	-	
2	Table Adjustment Knob	1	M00208	
3	Table Adjustment Ferrule	1	M00211	
4	Wave Washer	1	M003	
5	Table Adjustment Cam	1	M004	
6	Table Adjustment Cam Set Screw	2	H00181	M5x10 Dog Point
7	Table Slide Assy (Item 8 to 17)	1	M00212	
8	Table Slide	1	-	
9	Stud, Cam Actuator	1	MCA34	
10	Flat Washer	2	H00014	M6 Flat Washer
11	Hex Nut, Table Slide Bottom	2	H00020	M6 Hex Nut
12	Set Screw, Table Slide Top	1	H00182	M5x10 Flat Point
13	Screw, Table Slide End	1	H00189	M4x10 Cylindrical Head
14	Set Screw, Table Slide Side	2	H00186	M8x10 Cup Point
15	Screw, Table Slide Bottom	1	H00187	M5x16 Cylindrical Head
16	Hex Nut, Table Slide Bottom	1	H00028	M5 Hex Nut
17	Rod, Table Slide	1	M014	
18	Slide Rod Flat Washer	2	H00191	M8
19	Slide Rod Screw	2	H00116	M6x20 Hex Head
20	Table Slide Plate	1	M016	
21	Slide Plate Screw	2	H00061	M5x10 Cylindrical Head
22	Carriage Slide Rod	1	MCA26	
23	Carriage Spring	2	MCA27	
24	Slide Rod Screw	2	MCA25	
25	Wear Strip, Slide Bar	1	MA31/1	
26	Slide Bar, Square	1	MCA31	
27	Slide Bar Screw	2	H00187	M5x16 Cylindrical Head
28	Motor Hub Seal	1	MGI77/5	
29	Knife Hub Assembly (Item 30 - 36)	1	M00280	
30	Retaining Ring, Internal	1	H00053	M35, DIN 472
31	Retaining Ring, External	1	H00194	M15, DIN 471
32	Bearing	2	MCA12/3	
33	Spacer, Knife Pulley	1	M00237	
34	Shaft, Knife Hub - Switch Collar	1	M00337	
35	Oil Seal, Hub	1	MR12/7	
36	Pulley, Knife Hub	1	M00238	
37	Microswitch Collar	1	MCB61	
38	Knife Shaft Set Screw	1	H00183	M5x10 Cup Point
39	Knife Cover Release Knob	1	M00224	
40	Table	1	M00221	
41	Table Support	1	M00239	
42	Table Support Washer	2	H00014	M6 Flat Washer
43	Table Support Screw	2	H00116	M6x20 Hex Head
44	Hole Cover, Base	1	M00218	
45	Knife Wiper	1	M097	
46	Thumb Screw, Knife Wiper	2	MCC23	
47	Bottom Cover	1	M00240	
48	Flat Washer	1	H00063	M5 Flat Washer
49	Cover Screw	1	H00061	M5x10 Cylindrical Head
50	Back Foot	2	M00219	
51	Front Foot	2	M00220	
52	Warning label	1	M91022	
53	Label, Globe Logo	1	M91021	

G10E CHUTE COMPONENTS



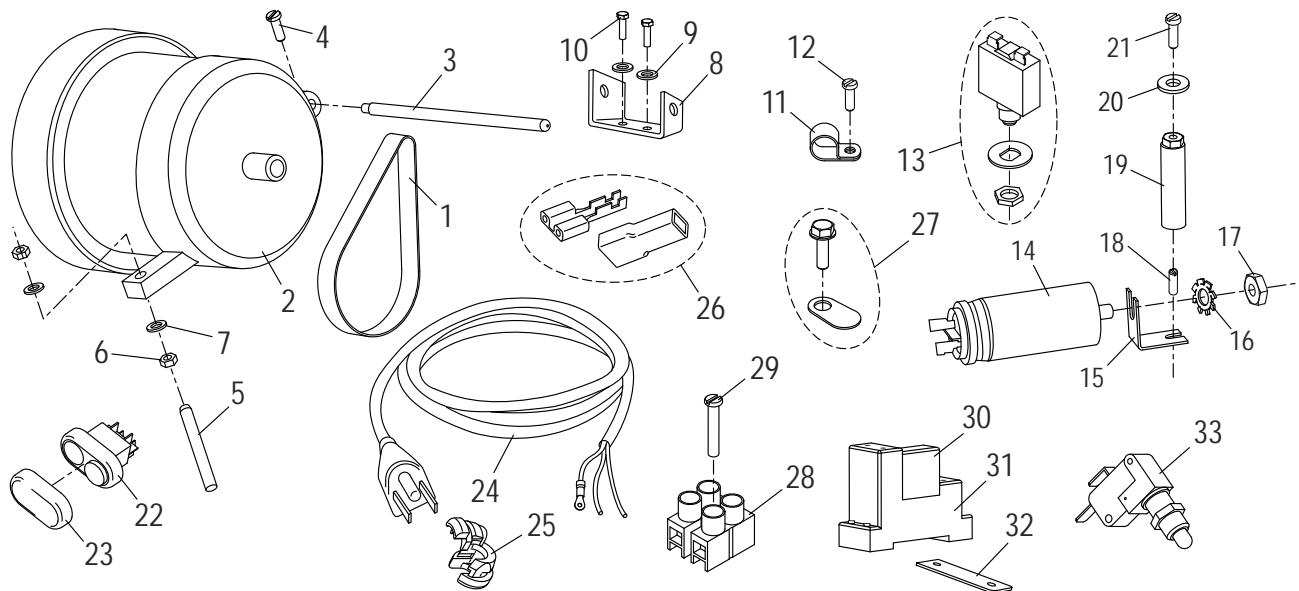
Item	Description	Qty	Part Number	Hardware
1	Chute Slide Assembly (Item 2 - 7)	1	M00272	
2	Chute Slide	1	-	
3	Brass Stud	1	M053	
4	Stud Nut	1	H00192	M8 Hex Nut
5	Bearing Washer	2	H00014	M6 Flat Washer
6	Bearing	1	MCA29	
7	Bearing Screw	1	H00043	M6x25 Hex Head
8	Chute Support	1	M00274	
9	Chute Support Knob	1	M00268	
10	Chute Release Knob	1	M00377	
11	Chute	1	M00276	
12	End Weight Assembly (Item 13 - 15)	1	M00264	
13	End Weight	1	-	
14	End Weight Handle	1	M00257	
15	End Weight Bumper	1	M108	
16	End Weight Rod	1	M00258	

G10E KNIFE AND SHARPENER COMPONENTS



Item	Description	Qty	Part Number	Hardware
1	Knife	1	MCB13	
2	Screw, Knife Mounting	3	H00201	M5x14 Flat Head
3	Knife Cover	1	M00327	
4	Sharpener Frame Assembly	1	M00397	
5	Deburring Stone	1	M092	
6	Sharpening Stone	1	MCC17	
7	Sharpener Cover Screw	2	H00187	M5x16 Cylindrical Head
8	Sharpener Cover	1	M074	
9	Sharpener Cover Knob	1	M075	
10	Flat Washer	1	H00014	M6 Flat Washer
11	Screw, Sharpener Cover Knob	1	H00197	M6x15 Hex Head
12	Sharpener Release Knob	1	M096	
13	Knife Rim Guard	1	MCRB14/1	
14	Insert, Knife Rim Guard	1	M045	
15	Screw, Rim Guard	4	H00435	M4x10 Flat Head
16	V Ring, Knife Seal VA 80	1	M00405	

G10E ELECTRICAL COMPONENTS



Item	Description	Qty	Part Number	Hardware
1	Drive Belt	1	MCB51	
2	Knife Motor	1	M00348	
3	Post, Motor Pivot	1	M031	
4	Screw	1	H00189	M4x10 Cylindrical Head
5	Set Screw	1	H00347	M6x50 Flat Point
6	Hex Nut	2	H00020	M6 Hex Nut
7	Flat Washer	2	H00014	M6 Flat Washer
8	Motor Mounting Bracket	1	M00355	
9	Motor Mounting Washer	2	H00063	
10	Motor Mounting Screw	2	H00354	
11	Cable Clamp	1	M037	
12	Screw, Clable Clamp	1	H00061	
13	Switch, Motor Reset	1	M038	
14	Capacitor, 16 μ f	1	M039	
15	Bracket, Capacitor Mounting	1	-	
16	Lock Washer	1	H00335	M8 External Tooth Lock Washer
17	Hex Nut	1	H00192	M8 Hex Nut
18	Threaded Stud	1	H00188	
19	Standoff, Cover Spacer	1	M00359	
20	Cover Washer	1	H00014	M6 Flat Washer
21	Cover Mounting Screw	1	H00061	M5x10 Cylindrical Head
22	Power Switch	1	MCR69	
23	Cover, Power Switch	1	MCR59	
24	Power Cord & Plug	1	M110	
25	Strain Relief	1	M111	
26	Terminal & Insulator Set	15	M00233	
27	Ground Screw/Marking Tab Set	1	M00334	
28	Terminal Block	1	MB80/2	
29	Terminal Block Mounting Screw	1	H00203	M4x20 Cylindrical Head
30	Relay	1	MCR75	
31	Relay Socket	1	MCR76	
32	Relay Mounting Plate	1	M00360	
33	Hub Assembly Microswitch	1	M026	

WIRING DIAGRAM - 115V, 50/60/Hz, 1 PH

