

Parts Catalog



G12A

Slicing Machine

Model: G12A

12/18/2017 Rev D, Starting Serial Number 600748 and Up
IMPORTANT!

TO EXPEDITE SHIPMENT OF PARTS, ALWAYS SPECIFY MODEL, REV,
PART NUMBER, AND SERIAL NUMBER OF UNIT.

GLOBE FOOD EQUIPMENT COMPANY

2215 East River Road
Dayton, Ohio 45439

Parts Department

Toll Free 1-800-745-6238 · Fax (937) 290-0585

E-Mail: info@globefoodequip.com

Website: www.globefoodequip.com

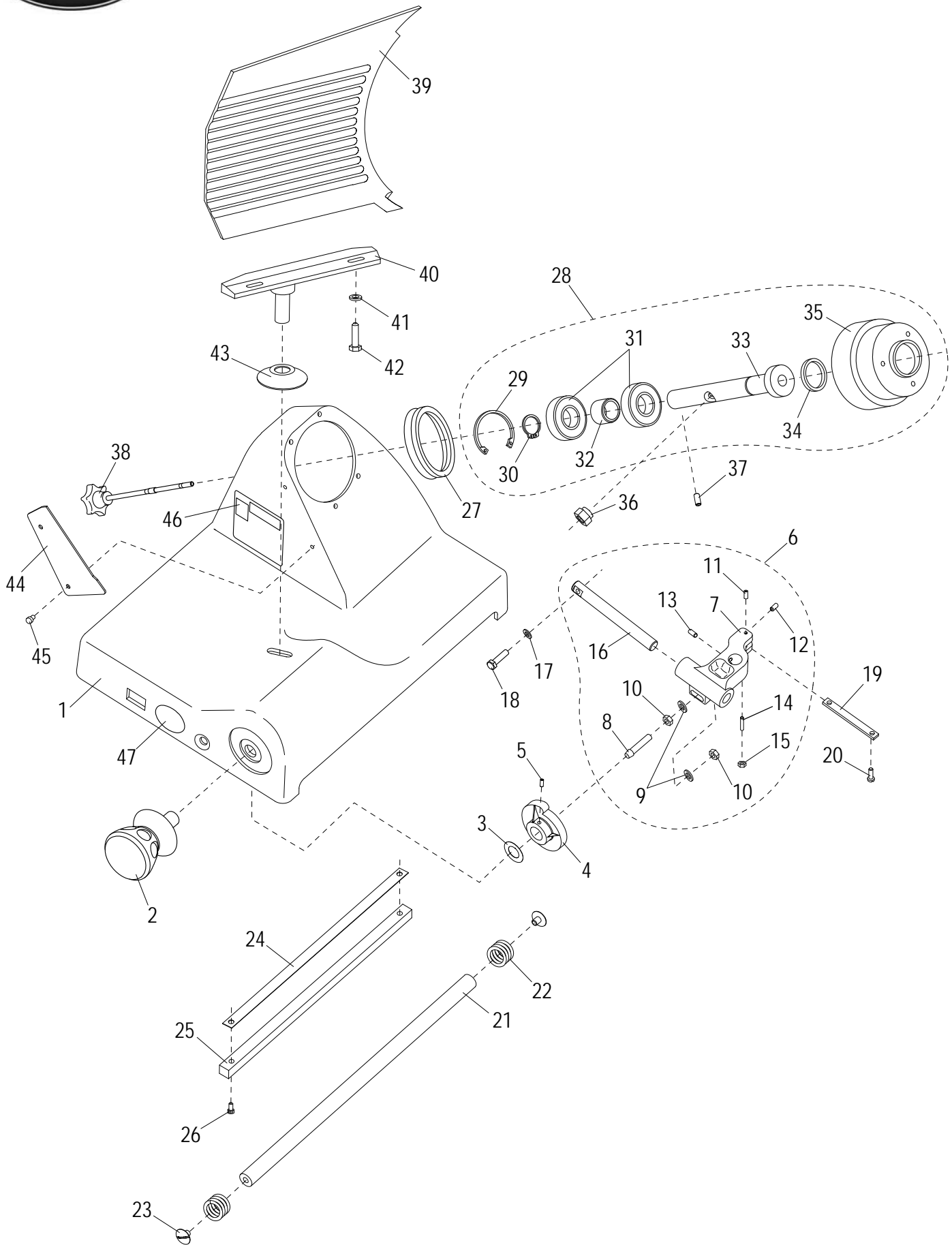
Not for resale

Table of Contents

Description	Page
G12A Base Components	4
G12A Chute Components	6
G12A Knife and Sharpener Components	8
G12A Auto Drive Components	10
G12A Electrical Components	12
G12A Wiring Diagram - 115, 50_60 Hz, 1PH	14



G12A Base Components



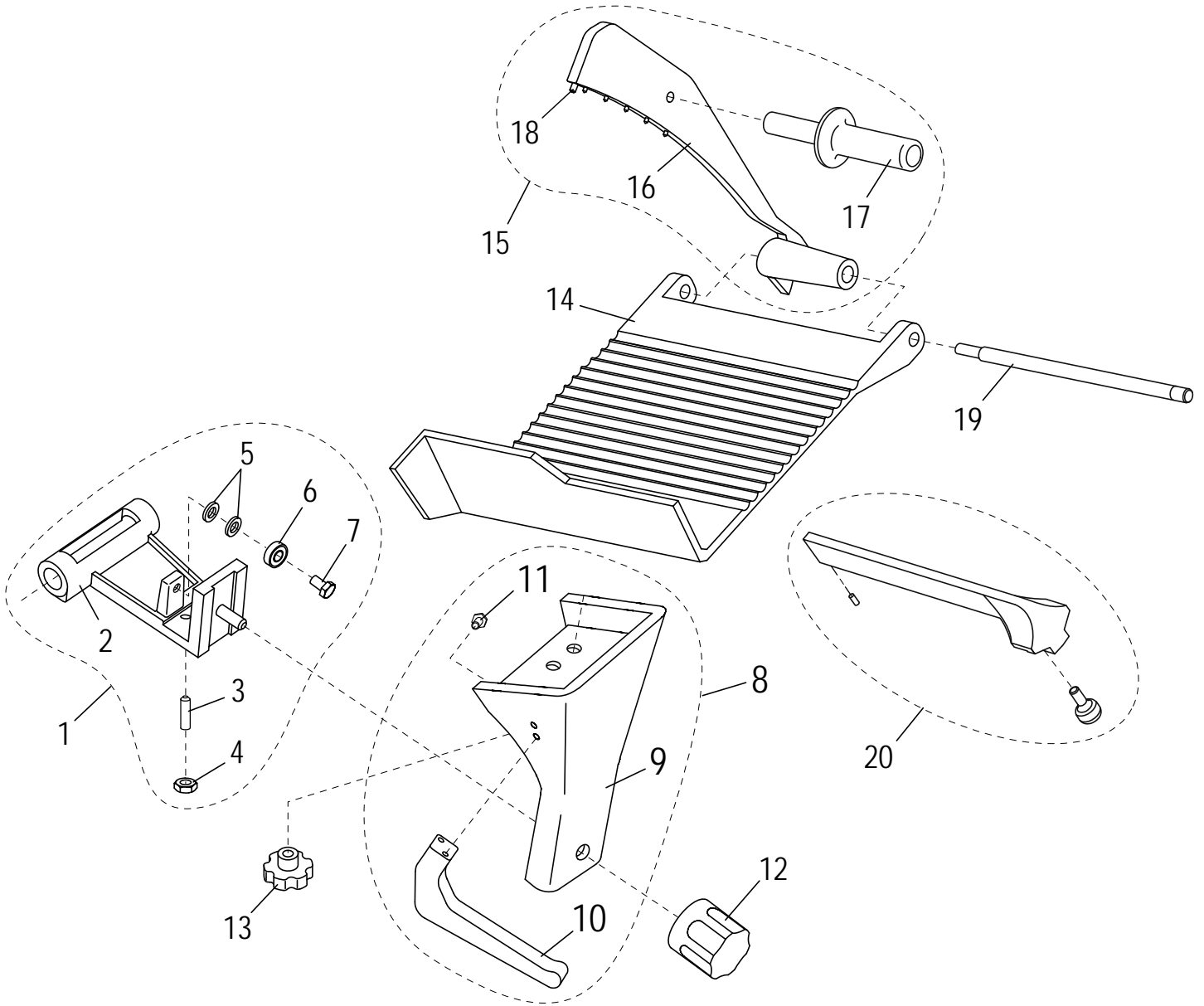


G12A Base Components

Item	Part Number	Description	Qty	Serial Number
1		Slicer Base	1	
2	M00209	Table Adjustment Knob	1	
3	M003	Wave Washer	1	
4	M004	Table Adjustment Cam	1	
5	H00181	Set Screw	2	
6	M305	Table Slide Assy (Incl. items 7-16)	1	
7		Table Slide	1	
8	M013	Stud, Cam Actuator	1	
9	H00191	Flat Washer M8, 8.4 IDx16 ODx1.4-1.8mm thick DIN 125 - Zn	2	
10	H00192	Hex Nut M8-1.25,13mm Width,4 mm Height-Zn	2	
11	H00182	Set Screw M5x10 Flat Pt Slotted - Zn	1	
12	H00185	Set Screw, Table Slide End	1	
13	H00186	Set Screw M8-1.25x10 Cup Pt. Hex Socket - BO	2	
14	H00188	Set Screw, Table Slide Bottom	1	
15	H00028	Hex Nut M5 - Zn	1	
16	MR36	Table Slide Rod	1	
17	H00191	Flat Washer M8, 8.4 IDx16 ODx1.4-1.8mm thick DIN 125 - Zn	2	
18	H00116	Hex Head Screw M6-1.0x20 - Zn	2	
19	M016	Table Slide Plate	1	
20	H00061	Hex Head Screw M5x10, Zinc	2	
21	M059	Carriage Slide Rod	1	
22	M061	Carriage Spring	2	
23	M060	Slide Rod Screw	2	
24	M063	Wear Strip, Slide Bar	1	
25	M062	Slide Bar, Square	1	
26	H00056	Slide Bar Screw	2	
27	MG177/5	V Ring, Knife Seal VA 80	1	
28	M319	Knife Hub Assembly (Incl. items 29-35)	1	
29		Retaining Ring, Internal	1	
30		Retaining Ring, External	1	
31		Bearing	2	
32		Spacer, Knife Pulley	1	
33		Shaft, Knife Hub	1	
34		Oil Seal, Hub	1	
35		Pulley, Knife Hub	1	
36	MCR61	Microswitch Mounting Bolt	1	
37	H00184	Knife Shaft Set Screw	1	
38	M00225	Knife Cover Release Knob	1	
39	M00232	Table	1	
40	M00227	Table Support	1	
41	H00191	Flat Washer M8, 8.4 IDx16 ODx1.4-1.8mm thick DIN 125 - Zn	2	
42	H00196	Table Support Screw	2	
43	M00228	Hole Cover, Base	1	
44	M097	Knife Wiper	1	
45	MCC23	Thumb Screw	2	
46	M91022	Label, Warning	1	
47	M91021	Label, Globe Logo	1	



G12A Chute Components



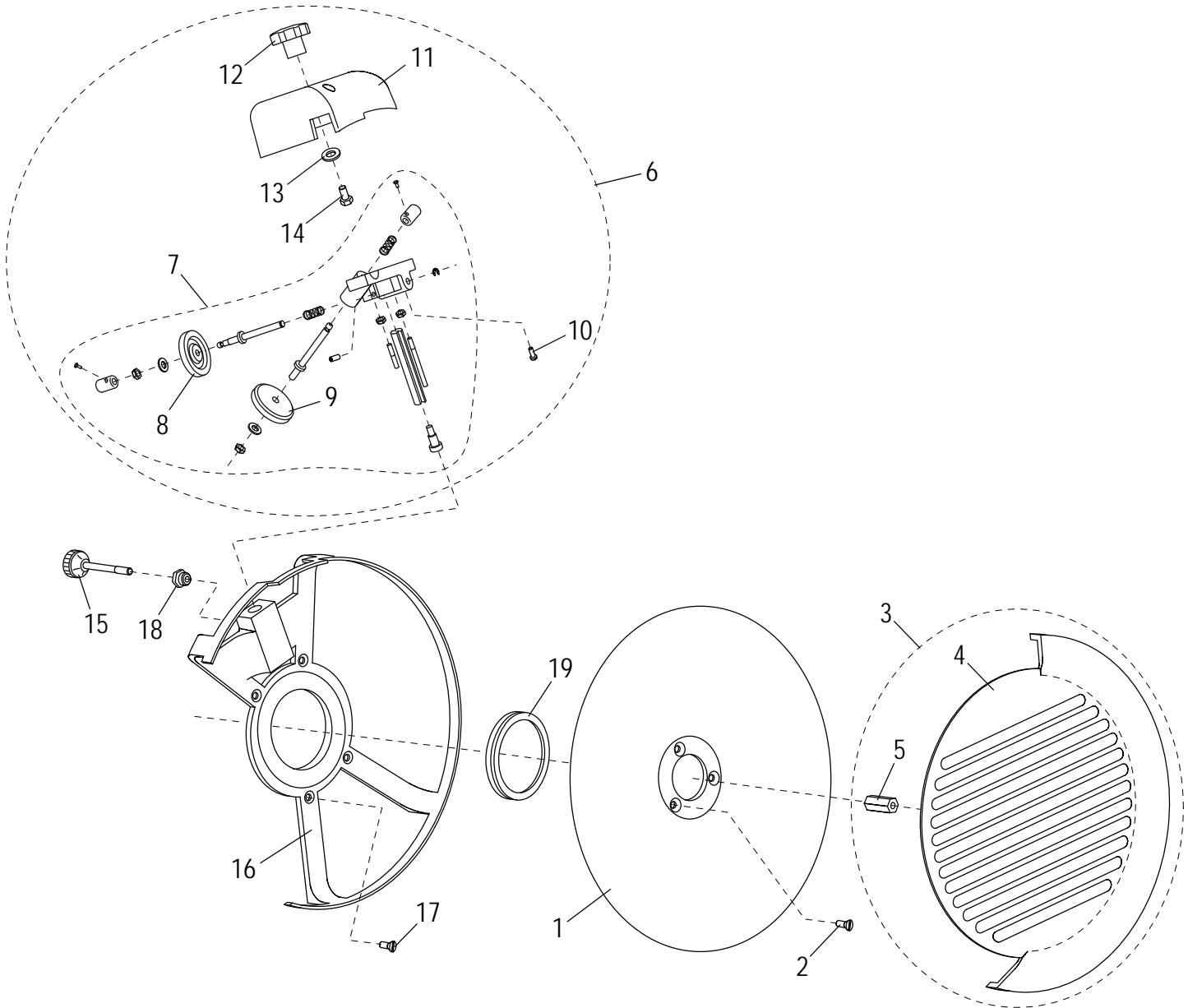


G12A Chute Components

Item	Part Number	Description	Qty	Serial Number
1	M00291	Chute Slide Assy (Incl. items 2-7)	1	
2		Chute Slide	1	
3	M053	Brass Stud	1	
4	H00192	Hex Nut M8-1.25,13mm Width,4 mm Height-Zn	1	
5	H00191	Flat Washer M8, 8.4 IDx16 ODx1.4-1.8mm thick DIN 125 - Zn	2	
6	M056	Bearing	1	
7	H00117	Hex Head Screw M8x20 - Zn	1	
8	M00282	Chute Support Assembly (Incl. items 9-11)	1	
9		Chute Support	1	
10	M067	Chute Support Handle	1	
11	H00156	Screw M6-1.0x12mm, Chute Support Handle	2	
12	M00268	Chute Support Knob	1	
13	M00254	Chute Release Knob	1	
14	M00386	Chute	1	
14	M01068	Chute	1	601330 ->
15	M00286	End Weight Assembly (Incl. items 16-18)	1	
15	M01069	End Weight Assembly (Incl. items 16-18)	1	601330 ->
16		End Weight	1	
17	M00261	End Weight Handle	1	
18	MC39	Bumper, End Weight	1	
18	M01070	End Weight Bumper	1	601330 ->
19	M00283	End Weight Rod	1	
19	M01071	End Weight Rod	1	601330 ->
20	M500A	Chute Fence Assembly	1	



G12A Knife and Sharpener Components



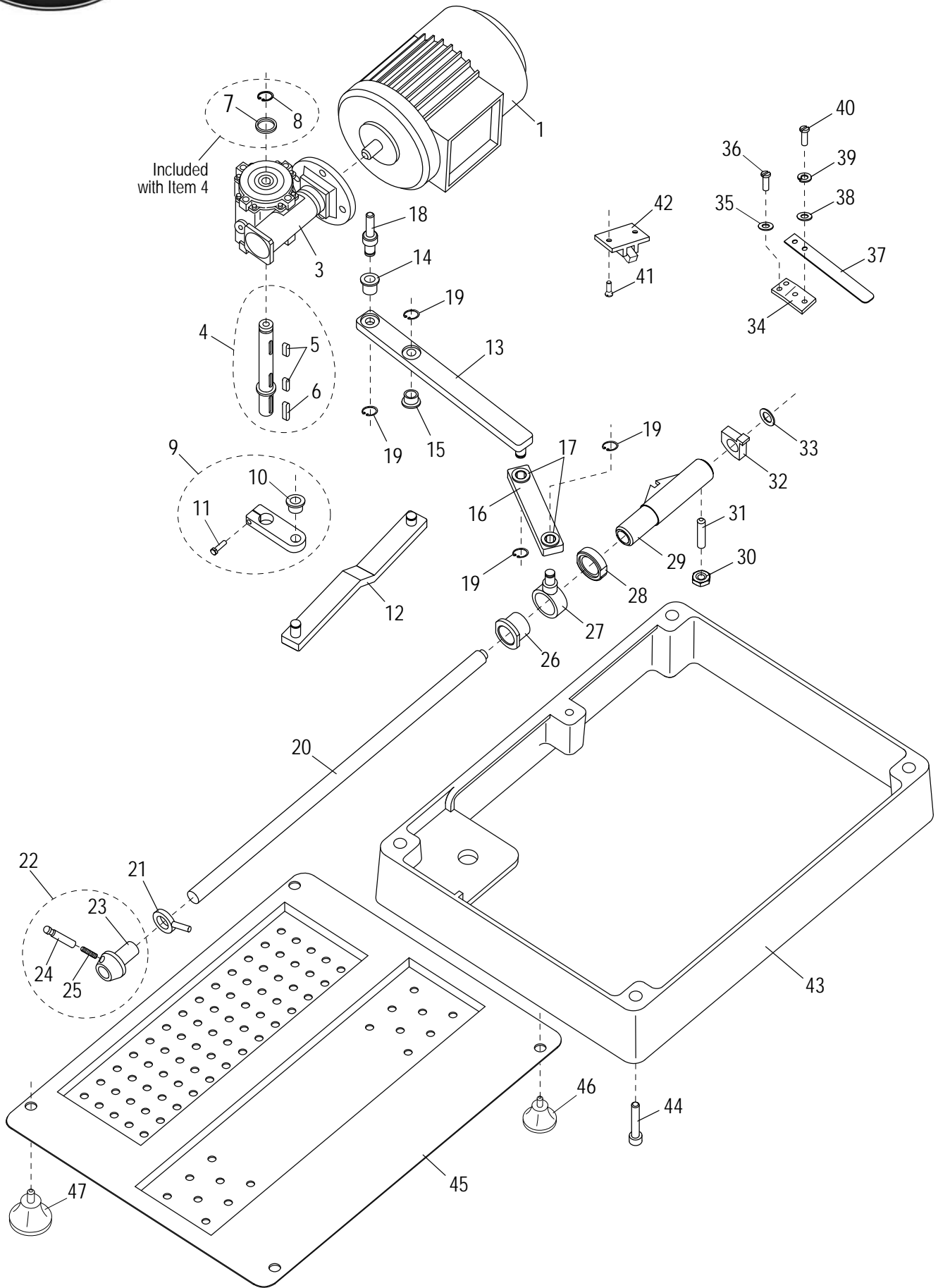


G12A Knife and Sharpener Components

Item	Part Number	Description	Qty	Serial Number
1	M047	Knife	1	
2	H00201	Screw, Knife Mounting	3	
3	M349	Knife Cover (Incl. items 4-5)	1	
4		Knife Cover	1	
5	M049A	Knife Cover Insert	1	
6	M377	Sharpener Assembly with Cover (Incl. items 7-14)	1	
7	MC017	Knife Sharpener Assembly (Incl. items 8-10)	1	
8	M092	Deburring Stone	1	
9	MCC17	Sharpening Stone	1	
10	H00187	Cheese Hd Screw M5-0.8x16 Slotted - Zn	2	
11	M074	Sharpener Cover	1	
12	M075	Sharpener Cover Knob	1	
13	M035	Flat Washer	1	
14	H00197	Hex Hd Screw M6x15 - Zn	1	
15	M096	Release Knob, Sharpener	1	
16	M044	Knife Rim Guard	1	
17	H00435	Screw, Rim Guard	4	
18	M045	Insert, Knife Rim Guard	1	
19	M00405	Knife Seal, V Ring - VA 80	1	



G12A Auto Drive Components



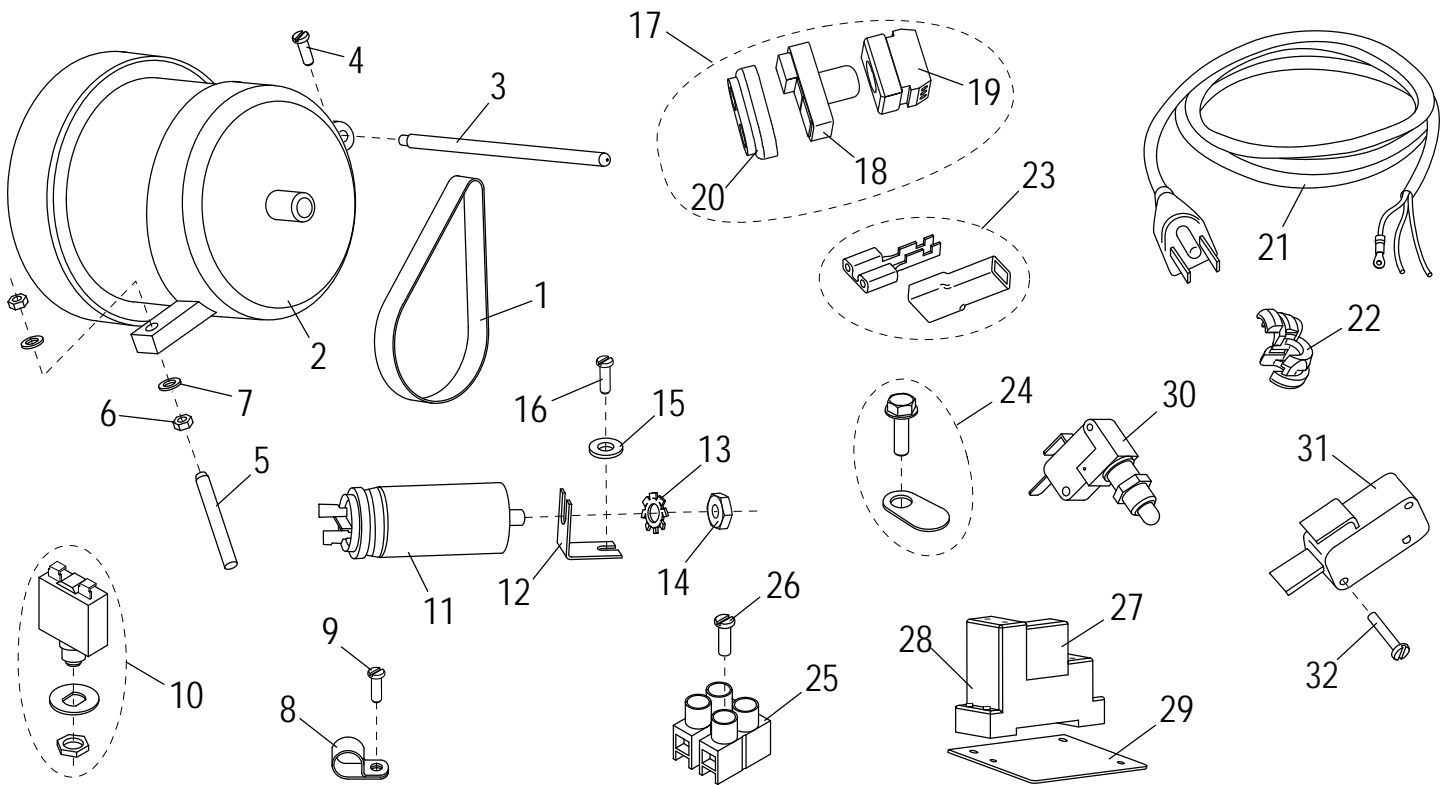


G12A Auto Drive Components

Item	Part Number	Description	Qty	Serial Number
1	M120	Chute Motor	1	
2	M120-K	Motor Key (Not Shown)	1	
3	M121	Reducing Gear	1	
4	M129	Auto Drive Shaft (Incl. items 5-8)	1	
5	H00323	Machine Key	2	
6	H00324	Machine Key	1	
7		Spacer	1	
8	H00317	Retaining Ring, External	1	
9	M130	Auto Drive Coupling (Incl. items 10-11)	1	
10	M137	Sleeve Bearing, Long	1	
11	H00043	Hex Head Screw M6x25 - Zn	1	
12	M131	Connecting Rod A	1	
13	M133	Connecting Rod C	1	
14	M137	Sleeve Bearing, Long	1	
15	MCRS8/2	Sleeve Bearing, Short	1	
16	M132	Connecting Rod B	1	
17	M137	Sleeve Bearing, Long	2	
18	M144	Pivot	1	
19	H00317	Retaining Ring, External	4	
20	M127	Chute Slide Rod	1	
21	M147	Stop Ring	1	
22	M01076	Auto Engage Lever Hub Assembly (Incl. items 23-25)	1	
23		Auto Engage Lever Hub	1	
24		Auto Engage Lever	1	
25		Set M3 x .5 x 20mm Screw	1	
26	M125	Bushing, Chute Slide (Nylon)	1	
27	M124	Actuator Slide Ring	1	
28	M123	Chute Slide Nut (Nylon)	1	
29	M122	Chute Slide Tube	1	
30	M126	Chute Slide Stud	1	
31	H00318	Jam Nut	1	
32	M136	Cam	1	
33	MB32	Wavy Washer	1	
34	M135	Engagement Spring Mounting Bracket	1	
35	H00063	Flat Washer, M5, Zinc	2	
36	H00319	Mounting Bracket Screw	2	
37	M134	Engagement Spring	1	
38	H00063	Flat Washer, M5, Zinc	2	
39	H00011	Split Lock Washer, DIN 7980 M5 - BO	2	
40	H00061	Hex Head Screw M5x10, Zinc	2	
41	H00305	Flat Hd Screw M5x15 Slotted - Nickel	2	
42	M143	Chute Slide Coupling	1	
43	M118BA	Apron, Chute Drive	1	
44	H00316	Apron Mounting Screw	4	
45	M00325	Bottom Cover	1	
46	M115	Back Foot	2	
47	M00229	Front Foot	2	



G12A Electrical Components





G12A Electrical Components

Item	Part Number	Description	Qty	Serial Number
1	M024	Drive Belt	1	
2	M030	Knife Motor	1	
3	M031	Post, Motor Pivot	1	
4	H00189	Cheese Hd Screw M4-0.7x10 Slotted - Zn	1	
5	M033	Set Screw	1	
6	M034	Hex Nut	2	
7	M035	Flat Washer	2	
8	M037	Cable Clamp	1	
9	H00061	Hex Head Screw M5x10, Zinc	1	
10	M038	Motor Reset Switch	1	
11	M039	Capacitor, 16 µf	2	
12		Capacitor Mounting Bracket	2	
13	H00335	Lock M8 Washer	2	
14	H00192	Hex Nut M8-1.25,13mm Width,4 mm Height-Zn	2	
15	H00063	Flat Washer, M5, Zinc	2	
16	H00061	Hex Head Screw M5x10, Zinc	2	
17	M01081	Power Switch Assembly (Incl. items 18-20)	1	
18	MCB58	Operator Push Button	1	
19		Power Switch Electrical Card	1	
20		Power Switch Cover	1	
21	M110	Power Cord & Plug	1	
22	M111	Strain Relief	1	
23	M00233	Female Terminal/Insulator Set	20	
24	M00334	Ground Screw/Marking Tab Set	1	
25	MB80/2	Terminal Block	1	
26	H00203	Terminal Block Mounting Screw	1	
27	MCRS75	Relay	1	
28	MCRS76	Relay Socket	1	
29	M149	Relay Mounting Plate	1	
30	M026	Hub Assembly Microswitch	1	
31	M139	Chute Drive Microswitch	1	
32	H00204	Microswitch Mounting Screw	2	



G12A Wiring Diagram - 115, 50_60 Hz, 1PH

