

Parts Catalog



G14

Slicing Machine

Model: G14

12/18/2017 Rev D, Serial Number 900341 and Up
IMPORTANT!

TO EXPEDITE SHIPMENT OF PARTS, ALWAYS SPECIFY MODEL, REV,
PART NUMBER, AND SERIAL NUMBER OF UNIT.

GLOBE FOOD EQUIPMENT COMPANY

2215 East River Road
Dayton, Ohio 45439

Parts Department

Toll Free 1-800-745-6238 · Fax (937) 290-0585

E-Mail: info@globefoodequip.com

Website: www.globefoodequip.com

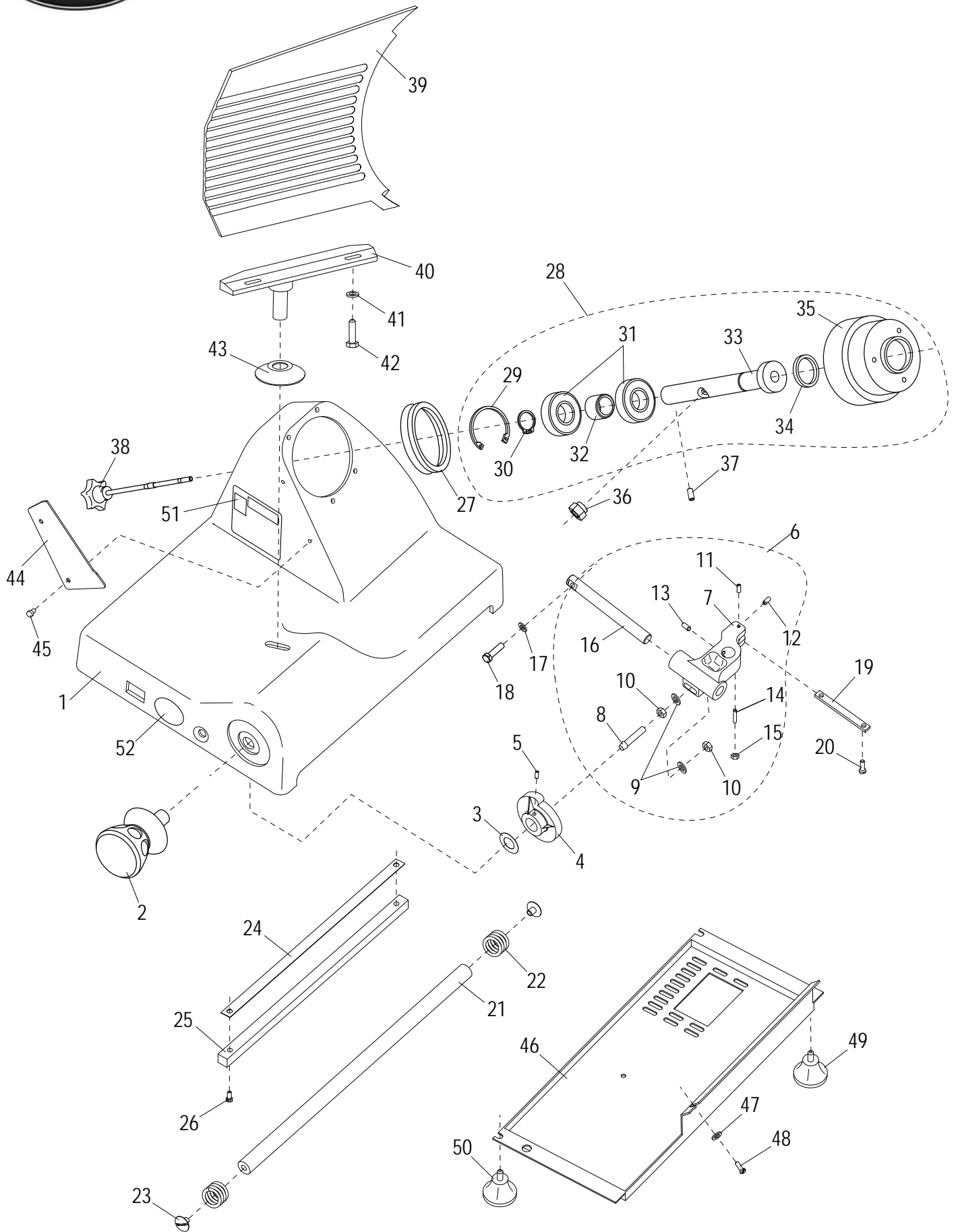
Not for resale

Table of Contents

Description	Page
G14 Base Components	4
G14 Chute Components	6
G14 Knife and Sharpener Components	8
G14 Electrical Components	10
G14 Wiring Diagram - 115, 50_60 Hz, 1PH	12



G14 Base Components



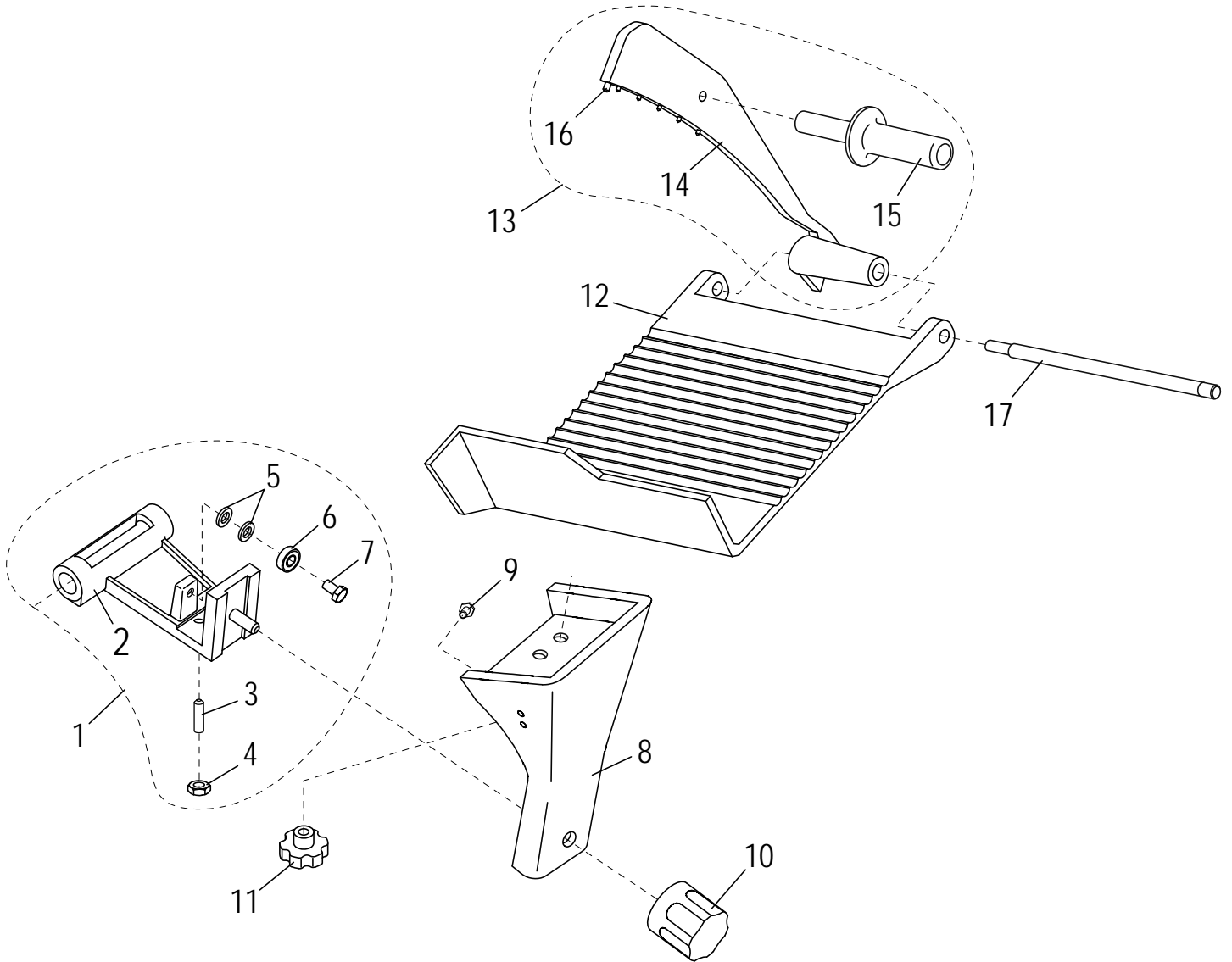


G14 Base Components

Item	Part Number	Description	Qty	Serial Number
1		Slicer Base	1	
2	M00209	Table Adjustment Knob	1	
3	M003	Wave Washer	1	
4	M004	Table Adjustment Cam	1	
5	H00181	Set Screw	2	
6	M305	Table Slide Assy (Incl. items 7-16)	1	
7		Table Slide	1	
8	M013	Stud, Cam Actuator	1	
9	H00191	Flat Washer M8, 8.4 IDx16 ODx1.4-1.8mm thick DIN 125 - Zn	2	
10	H00192	Hex Nut M8-1.25,13mm Width,4 mm Height-Zn	2	
11	H00182	Set Screw M5x10 Flat Pt Slotted - Zn	1	
12	H00185	Set Screw, Table Slide End	1	
13	H00186	Set Screw M8-1.25x10 Cup Pt. Hex Socket - BO	2	
14	H00188	Set Screw, Table Slide Bottom	1	
15	H00028	Hex Nut M5 - Zn	1	
16	MR36	Table Slide Rod	1	
17	H00191	Flat Washer M8, 8.4 IDx16 ODx1.4-1.8mm thick DIN 125 - Zn	2	
18	H00116	Hex Head Screw M6-1.0x20 - Zn	2	
19	M016	Table Slide Plate	1	
20	H00061	Hex Head Screw M5x10, Zinc	2	
21	M00242	Carriage Slide Rod	1	
22	M00243	Carriage Spring	2	
23	ME25	Slide Rod Screw	2	
24	ME31/1	Wear Strip, Slide Bar	1	
25	M00244	Slide Bar, Square	1	
26	H00056	Slide Bar Screw	2	
27	M00245	Motor Hub Seal	1	
28	MS12/2A	Knife Hub Assembly (Incl. items 29-35)	1	
29		Retaining Ring, Internal	1	
30		Retaining Ring, External	1	
31		Bearing	2	
32	M00249	Spacer, Knife Pulley	1	
33		Shaft, Knife Hub	1	
34	MS12/7	Oil Seal, Hub	1	
35		Pulley, Knife Hub	1	
36	MCR61	Microswitch Mounting Bolt	1	
37	H00184	Knife Shaft Set Screw	1	
38	M00250	Knife Cover Release Knob	1	
39	M00251	Table	1	
40	M00252	Table Support	1	
41	H00191	Flat Washer M8, 8.4 IDx16 ODx1.4-1.8mm thick DIN 125 - Zn	2	
42	H00196	Table Support Screw	2	
43	M00228	Hole Cover, Base	1	
44	MS22	Knife Wiper	1	
45	MCC23	Thumb Screw	2	
46	MS64	Bottom Cover	1	
47	H00063	Flat Washer, M5, Zinc	1	
48	H00061	Hex Head Screw M5x10, Zinc	1	
49	M115	Back Foot	2	
50	M00229	Front Foot	2	
51	M91022	Label, Warning	1	
52	M91021	Label, Globe Logo	1	



G14 Chute Components



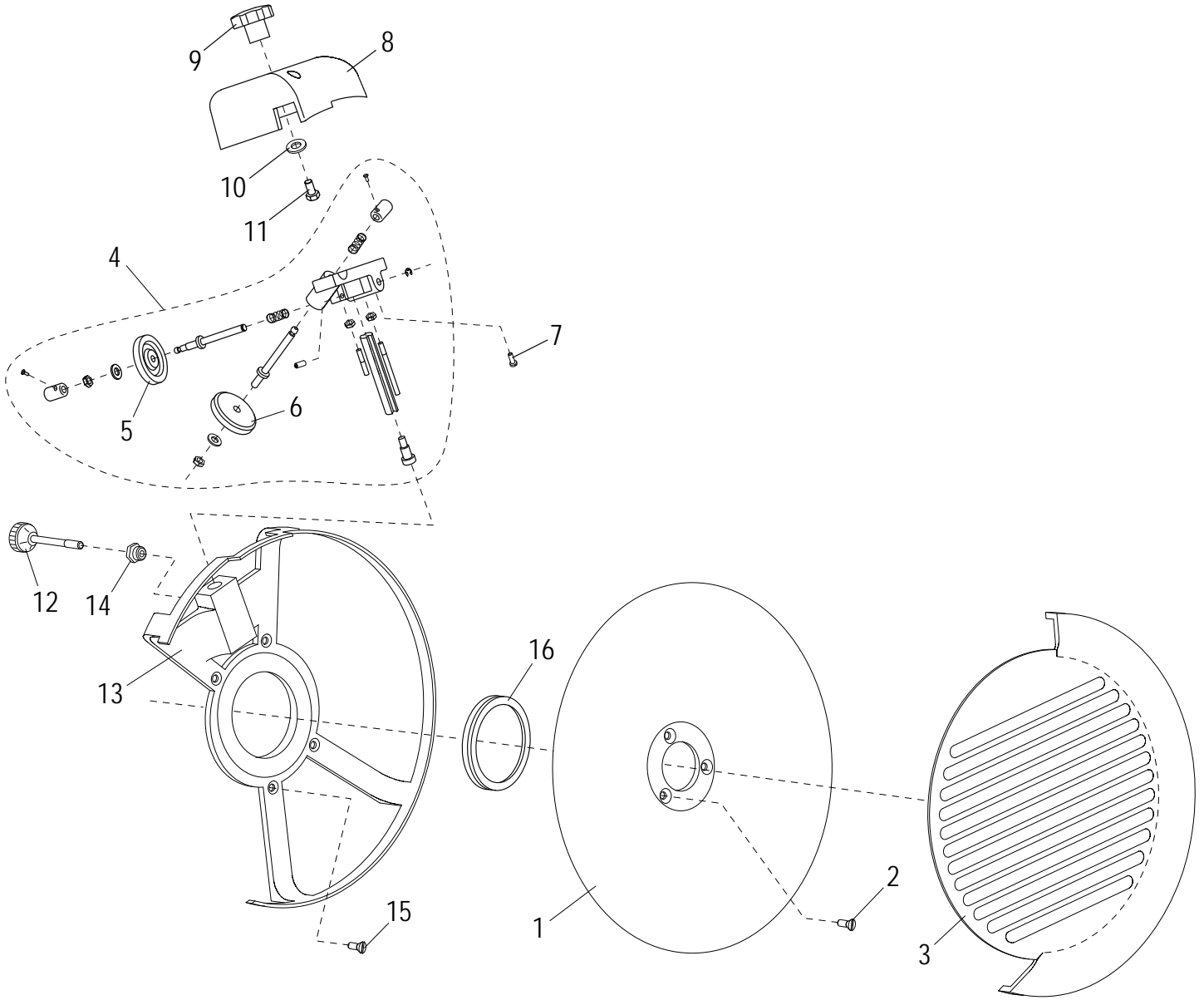


G14 Chute Components

Item	Part Number	Description	Qty	Serial Number
1	M00290	Chute Slide Assy (Incl. items 2-7)	1	
2		Chute Slide	1	
3	MS30	Brass Stud	1	
4	H00192	Hex Nut M8-1.25,13mm Width,4 mm Height-Zn	1	
5	H00191	Flat Washer M8, 8.4 IDx16 ODx1.4-1.8mm thick DIN 125 - Zn	2	
6	M056	Bearing Screw	1	
7	H00117	Hex Head Screw M8x20 - Zn	1	
8	M00293	Chute Support	1	
9	H00156	Screw, Chute Support Handle	2	
10	M00268	Chute Support Knob	1	
11	M00254	Chute Release Knob	1	
12	M00294	Chute	1	
12	M01068	Chute	1	901213 ->
13	M00391	End Weight Assembly (Incl. items 14-16)	1	
13	M01069	End Weight Assembly (Incl. items 14-16)	1	901213 ->
14		End Weight	1	
15	M00261	End Weight Handle	1	
16	MC39	Bumper, End Weight	1	
16	M01070	End Weight Bumper	1	901213 ->
17	M00283	End Weight Rod	1	
17	M01071	End Weight Rod	1	901213 ->



G14 Knife and Sharpener Components



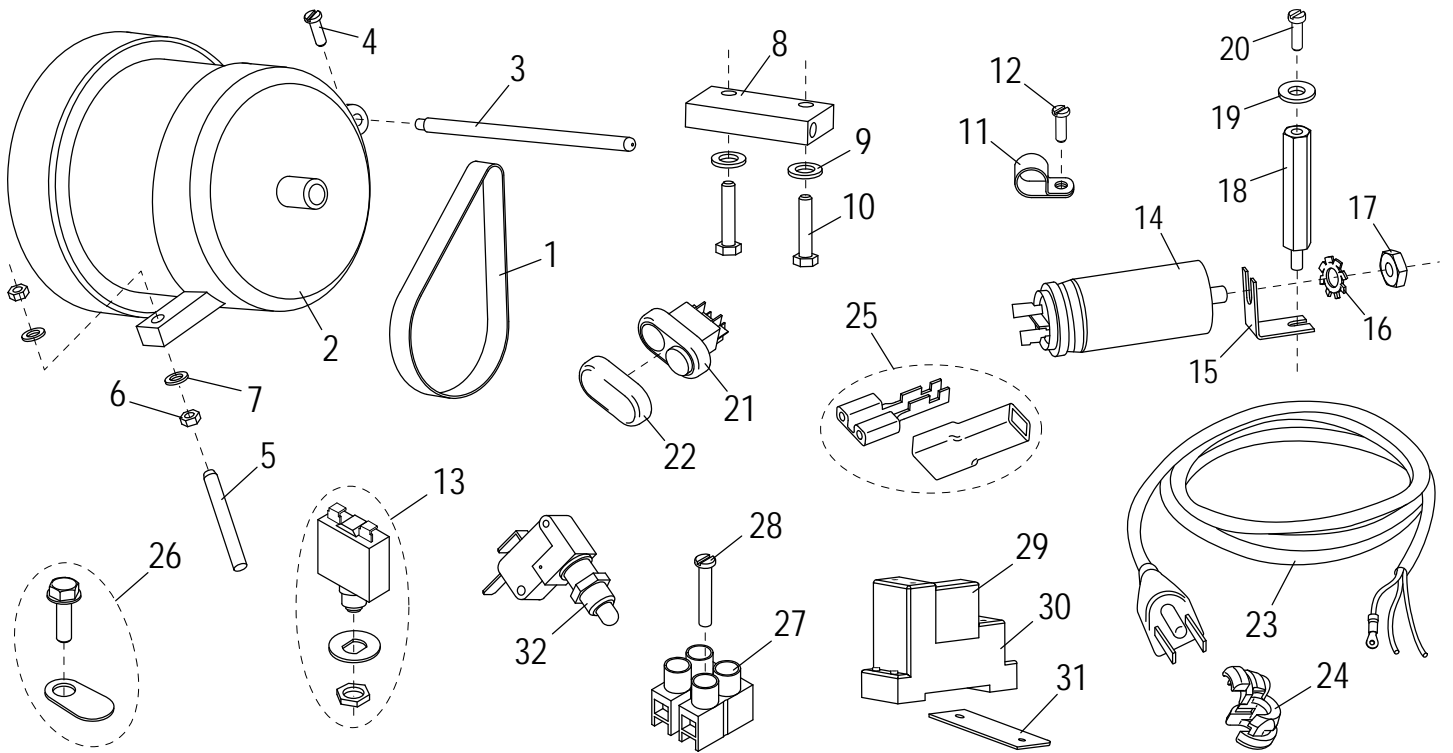


G14 Knife and Sharpener Components

Item	Part Number	Description	Qty	Serial Number
1	MG13	Knife	1	
2	H00201	Screw, Knife Mounting	3	
3	M00332	Knife Cover	1	
4	MC17A	Knife Sharpener Assembly	1	
5	M092	Deburring Stone	1	
6	MCC17	Sharpening Stone	1	
7	H00187	Cheese Hd Screw M5-0.8x16 Slotted - Zn	2	
8	M074	Sharpener Cover	1	
9	M075	Sharpener Cover Knob	1	
10	M035	Flat Washer	1	
11	H00197	Hex Hd Screw M6x15 - Zn	1	
12	M096	Release Knob, Sharpener	1	
13	MS14/1	Knife Rim Guard	1	
14	M045	Insert, Knife Rim Guard	1	
15	H00435	Screw, Rim Guard	4	
16	MS77/5	V Ring, Knife Seal VA 90	1	



G14 Knife and Sharpener Components





G14 Knife and Sharpener Components

Item	Part Number	Description	Qty	Serial Number
1	MS51	Drive Belt	1	
2	MS43/1	Knife Motor	1	
3	MB52/1	Post, Motor Pivot	1	
4	H00189	Cheese Hd Screw M4-0.7x10 Slotted - Zn	1	
5	M033	Set Screw	1	
6	M034	Hex Nut	2	
7	M035	Flat Washer	2	
8	M00356	Motor Mounting Block	1	
9	H00063	Flat Washer, M5, Zinc	1	
10	H00357	Mounting Block Screw	2	
11	M037	Cable Clamp	1	
12	H00061	Hex Head Screw M5x10, Zinc	1	
13	MK7004	Switch, Motor Reset	1	
14	MB54/3	Capacitor, 16 μ f	1	
15		Bracket, Capacitor Mounting	1	
16	H00335	Capacitor Lock Washer	1	
17	H00192	Hex Nut M8-1.25,13mm Width,4 mm Height-Zn	1	
18	M00361	Standoff, Cover Spacer	1	
19	M035	Flat Washer	1	
20	H00061	Hex Head Screw M5x10, Zinc	1	
21	MCR69	Power Switch	1	
22	MCR59	Power Switch Cover	1	
23	M110	Power Cord & Plug	1	
24	M111	Strain Relief	1	
25	M00233	Female Terminal/Insulator Set	15	
26	M00334	Ground Screw/Marking Tab Set	1	
27	MB80/2	Terminal Block	1	
28	H00203	Terminal Block Mounting Screw	1	
29	MCR75	Relay	1	
30	MCR76	Relay Socket	1	
31	M00360	Relay Mounting Plate	1	
32	M026	Hub Assembly Microswitch	1	



G14 Wiring Diagram - 115, 50_60 Hz, 1PH

WIRE COLOR
MAY VARY

VIEW FROM
BOTTOM
OF SLICER

