

# INSTALLATION AND OPERATING INSTRUCTIONS

## CHECKING SHIPMENT

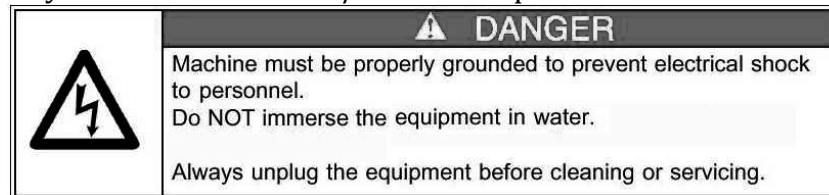
Unpack all cartons and check thoroughly for any damage which might have occurred in transit. Damage claims should be filed immediately with the transportation company.

## ELECTRICAL REQUIREMENTS

2451: 120V, 875W, 60Hz

2451EX: 230V, 875W, 50Hz

If in doubt, your electrician must furnish sufficient power for proper machine operation. We recommend this popper be on a dedicated and protected circuit. Failure to wire properly will void the warranty and may result in damage to the machine. It is Gold Medal® Products Company's recommendation that this machine be plugged directly into a wall outlet. The use of extension cords is not recommended due to safety concerns, and may cause sacrificed and/or reduced performance.



## INSTALLATION

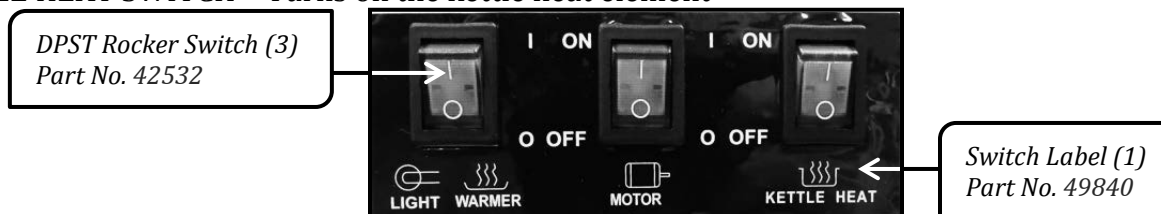
Your *Master Pop* and Kettle were adjusted, inspected, and tested before it left the factory. Remove all packing before setting up your new *Master Pop*. Hang the kettle on the hanger assembly attached to the ceiling of your *Master Pop*. Finally, make sure to plug the power cord of your kettle into the power receptacle located on the ceiling of your popper.

## CONTROLS AND THEIR FUNCTIONS

LIGHT AND WARMER SWITCH – Turns on the heat light.

KETTLE MOTOR SWITCH – Turns on the motor which drives kettle agitator shaft.

KETTLE HEAT SWITCH – Turns on the kettle heat element



## AMOUNT OF POPCORN AND OIL

Your new *Master Pop* is equipped with a 6 oz corn measuring cup (Part No. 49049).

Corn charge – 6 oz.

Oil charge – 1.6 to 2.0 oz.

Flavacol – 1 teaspoon

## POPPING INSTRUCTIONS

1. Turn *Kettle Heat* and *Kettle Motor* switch on.
2. Make a test pop by putting 3 kernels of corn and 1 oz. (30 ml) of oil into the kettle.
3. When the 3 kernels have popped, load the kettle with corn and oil charge.
4. When corn has popped, dump the kettle.
5. Repeat cycle starting with step number 3 above; always pop 3-5 batches for best popcorn.

# INSTALLATION AND OPERATING INSTRUCTIONS

## CHECKING SHIPMENT

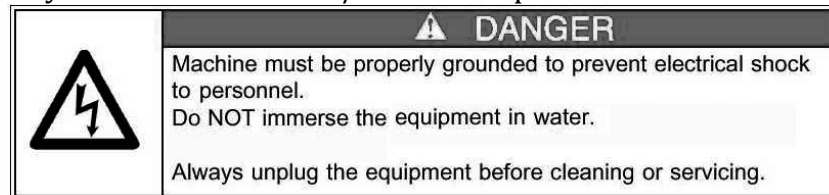
Unpack all cartons and check thoroughly for any damage which might have occurred in transit. Damage claims should be filed immediately with the transportation company.

## ELECTRICAL REQUIREMENTS

2451: 120V, 875W, 60Hz

2451EX: 230V, 875W, 50Hz

If in doubt, your electrician must furnish sufficient power for proper machine operation. We recommend this popper be on a dedicated and protected circuit. Failure to wire properly will void the warranty and may result in damage to the machine. It is Gold Medal® Products Company's recommendation that this machine be plugged directly into a wall outlet. The use of extension cords is not recommended due to safety concerns, and may cause sacrificed and/or reduced performance.



## INSTALLATION

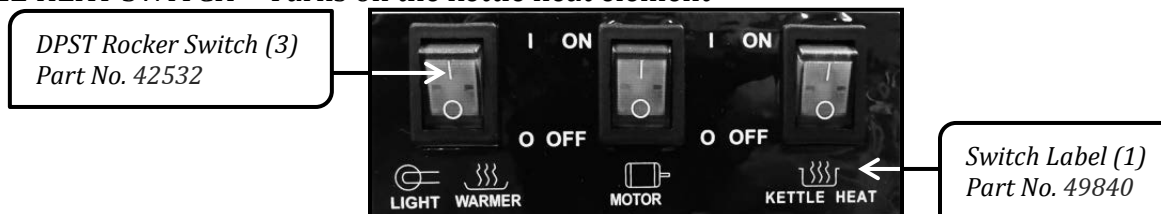
Your *Master Pop* and Kettle were adjusted, inspected, and tested before it left the factory. Remove all packing before setting up your new *Master Pop*. Hang the kettle on the hanger assembly attached to the ceiling of your *Master Pop*. Finally, make sure to plug the power cord of your kettle into the power receptacle located on the ceiling of your popper.

## CONTROLS AND THEIR FUNCTIONS

LIGHT AND WARMER SWITCH – Turns on the heat light.

KETTLE MOTOR SWITCH – Turns on the motor which drives kettle agitator shaft.

KETTLE HEAT SWITCH – Turns on the kettle heat element



## AMOUNT OF POPCORN AND OIL

Your new *Master Pop* is equipped with a 6 oz corn measuring cup (Part No. 49049).

Corn charge – 6 oz.

Oil charge – 1.6 to 2.0 oz.

Flavacol – 1 teaspoon

## POPPING INSTRUCTIONS

1. Turn *Kettle Heat* and *Kettle Motor* switch on.
2. Make a test pop by putting 3 kernels of corn and 1 oz. (30 ml) of oil into the kettle.
3. When the 3 kernels have popped, load the kettle with corn and oil charge.
4. When corn has popped, dump the kettle.
5. Repeat cycle starting with step number 3 above; always pop 3-5 batches for best popcorn.

# INSTALLATION AND OPERATING INSTRUCTIONS

## CHECKING SHIPMENT

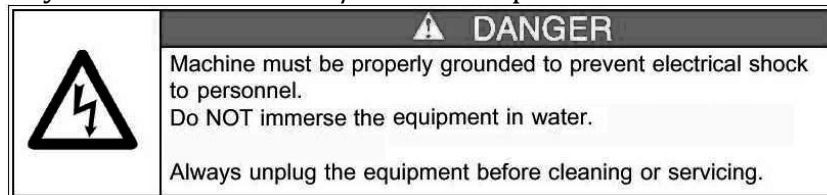
Unpack all cartons and check thoroughly for any damage which might have occurred in transit. Damage claims should be filed immediately with the transportation company.

## ELECTRICAL REQUIREMENTS

2451: 120V, 875W, 60Hz

2451EX: 230V, 875W, 50Hz

If in doubt, your electrician must furnish sufficient power for proper machine operation. We recommend this popper be on a dedicated and protected circuit. Failure to wire properly will void the warranty and may result in damage to the machine. It is Gold Medal® Products Company's recommendation that this machine be plugged directly into a wall outlet. The use of extension cords is not recommended due to safety concerns, and may cause sacrificed and/or reduced performance.



## INSTALLATION

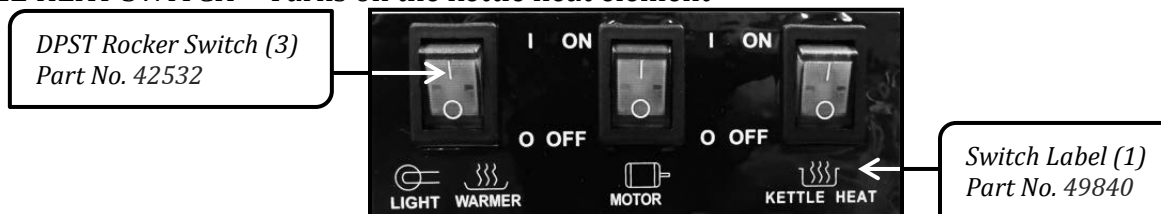
Your *Master Pop* and Kettle were adjusted, inspected, and tested before it left the factory. Remove all packing before setting up your new *Master Pop*. Hang the kettle on the hanger assembly attached to the ceiling of your *Master Pop*. Finally, make sure to plug the power cord of your kettle into the power receptacle located on the ceiling of your popper.

## CONTROLS AND THEIR FUNCTIONS

LIGHT AND WARMER SWITCH – Turns on the heat light.

KETTLE MOTOR SWITCH – Turns on the motor which drives kettle agitator shaft.

KETTLE HEAT SWITCH – Turns on the kettle heat element



## AMOUNT OF POPCORN AND OIL

Your new *Master Pop* is equipped with a 6 oz corn measuring cup (Part No. 49049).

Corn charge – 6 oz.

Oil charge – 1.6 to 2.0 oz.

Flavacol – 1 teaspoon

## POPPING INSTRUCTIONS

1. Turn *Kettle Heat* and *Kettle Motor* switch on.
2. Make a test pop by putting 3 kernels of corn and 1 oz. (30 ml) of oil into the kettle.
3. When the 3 kernels have popped, load the kettle with corn and oil charge.
4. When corn has popped, dump the kettle.
5. Repeat cycle starting with step number 3 above; always pop 3-5 batches for best popcorn.



## ORDERING SPARE PARTS

1. Identify the worn or broken part by checking it with the illustrations and parts list.
2. When ordering parts, include part number, part name, and quantity required.
3. Include your model name and machine serial number (found on nameplate) with your order.
4. Address orders to:

Parts Department  
Gold Medal® Products Co.  
10700 Medallion Drive  
Cincinnati, Ohio 45241-4807

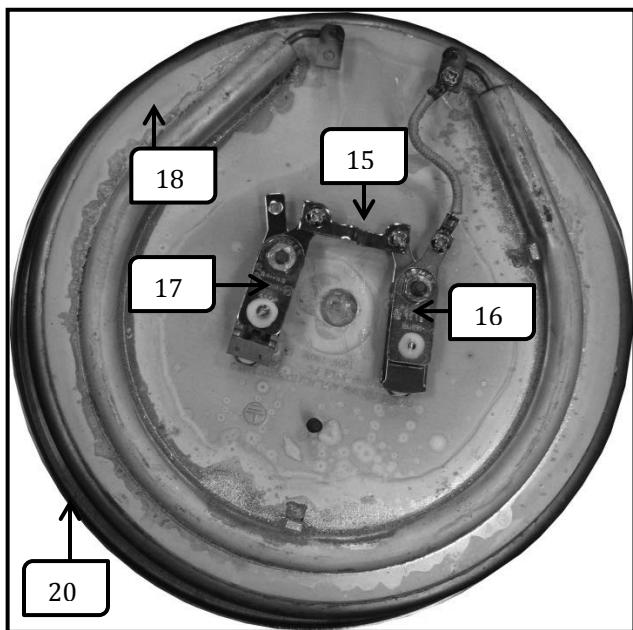
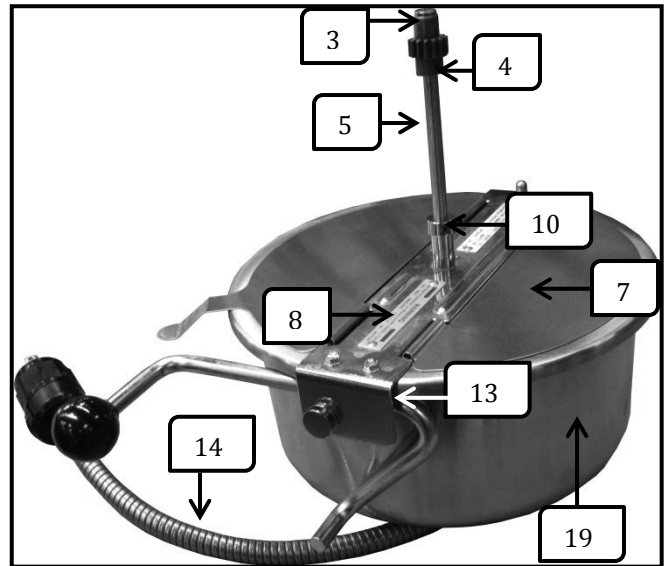
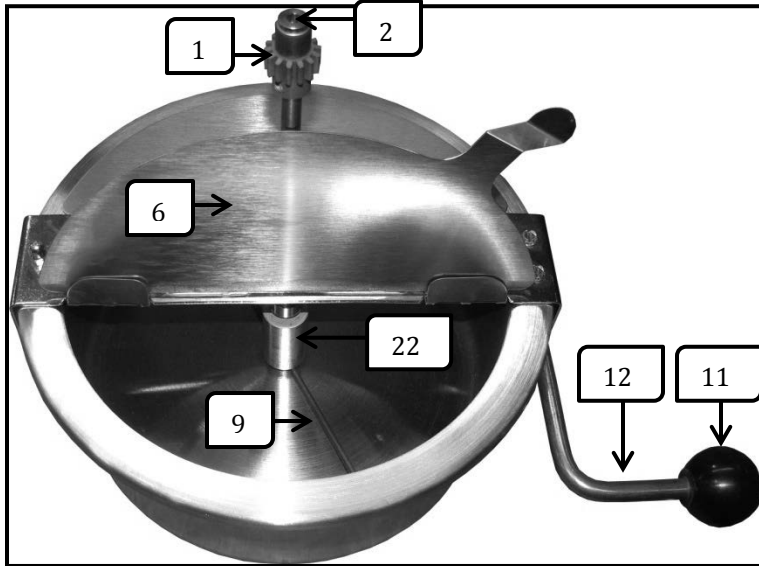
Or place orders at:

(800) 543-0862  
(513) 769-7676  
Fax: (513) 769-8500  
E-mail: [info@gmpopcorn.com](mailto:info@gmpopcorn.com)  
[www.gmpopcorn.com](http://www.gmpopcorn.com)

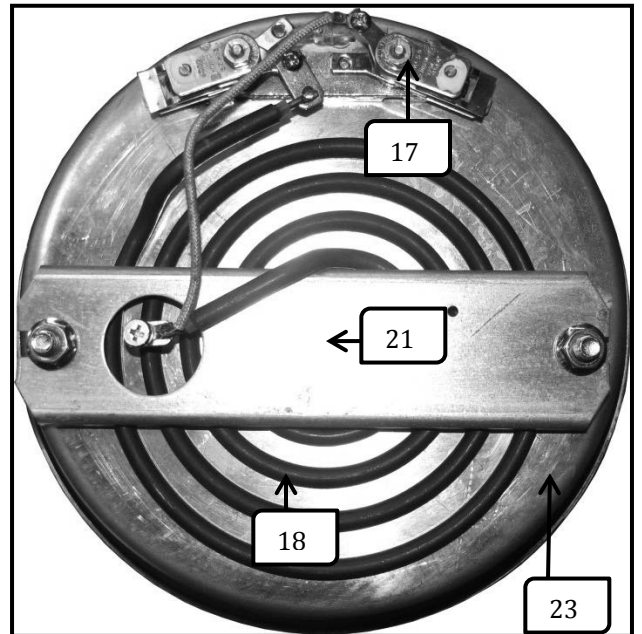


# KETTLE BREAKDOWN

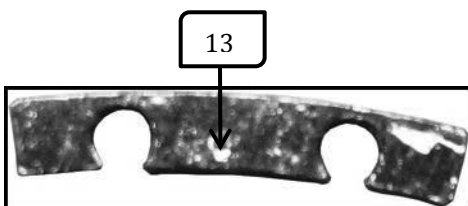
Kettle Part No. 56000, 49434EXN



Model No. 56000 Bottom Assembly

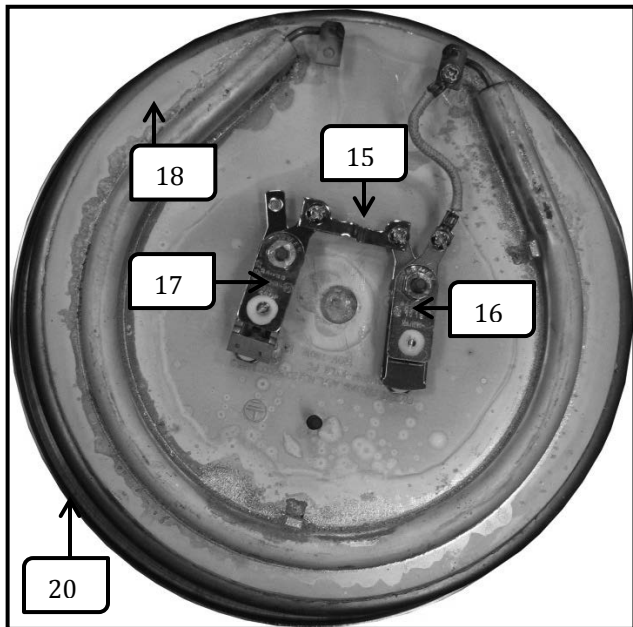
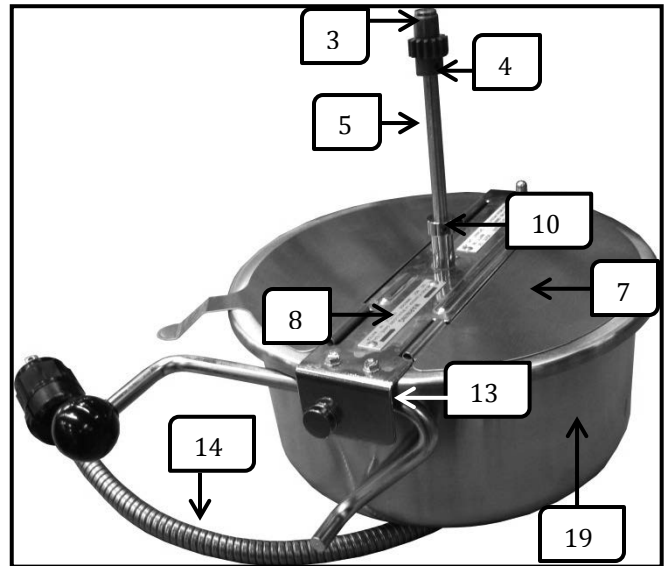
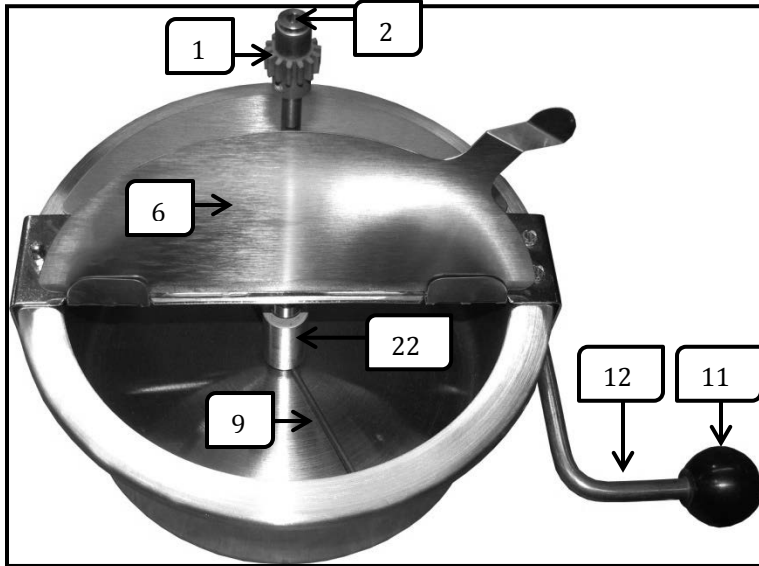


Model No. 49434EXN Bottom Assembly

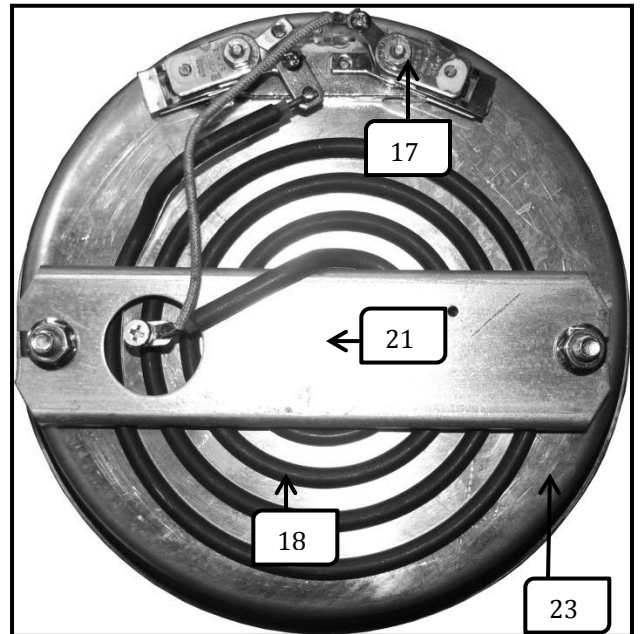


# KETTLE BREAKDOWN

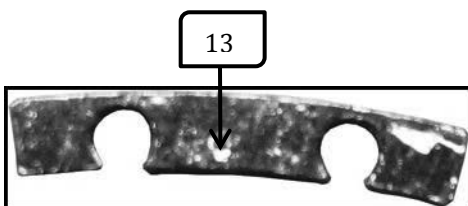
Kettle Part No. 56000, 49434EXN



Model No. 56000 Bottom Assembly

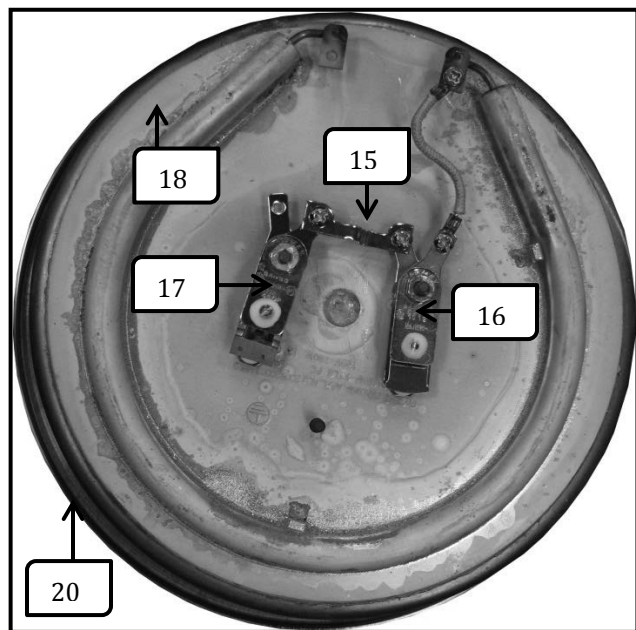
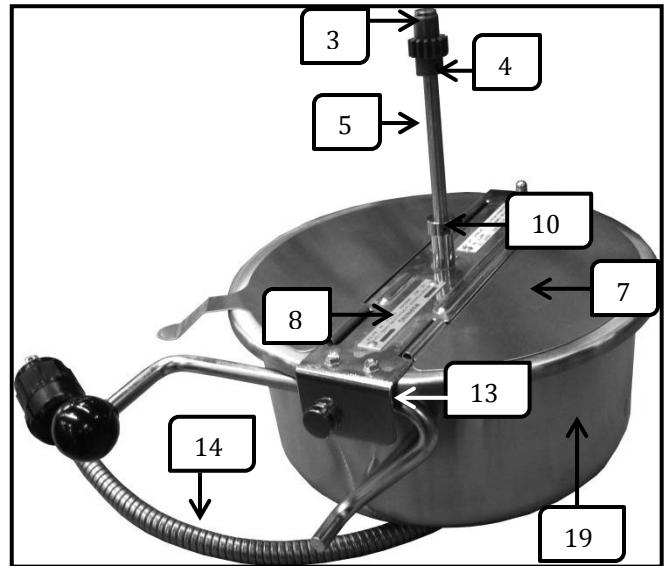
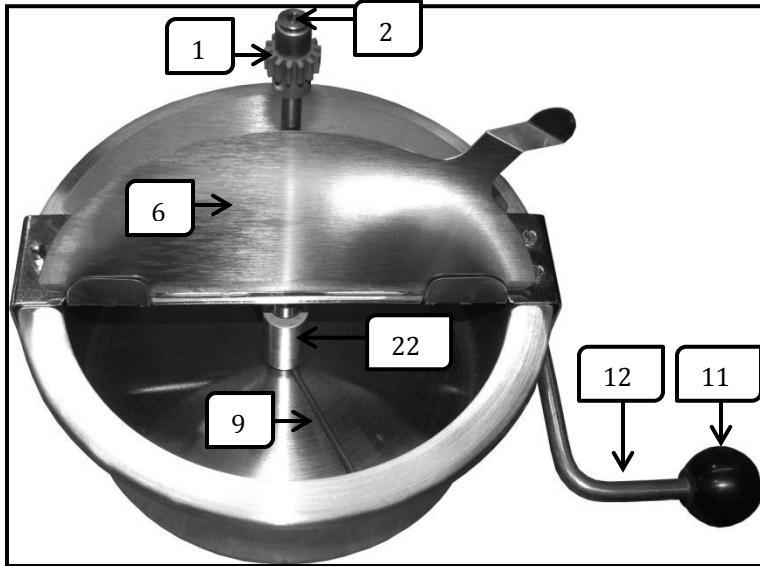


Model No. 49434EXN Bottom Assembly

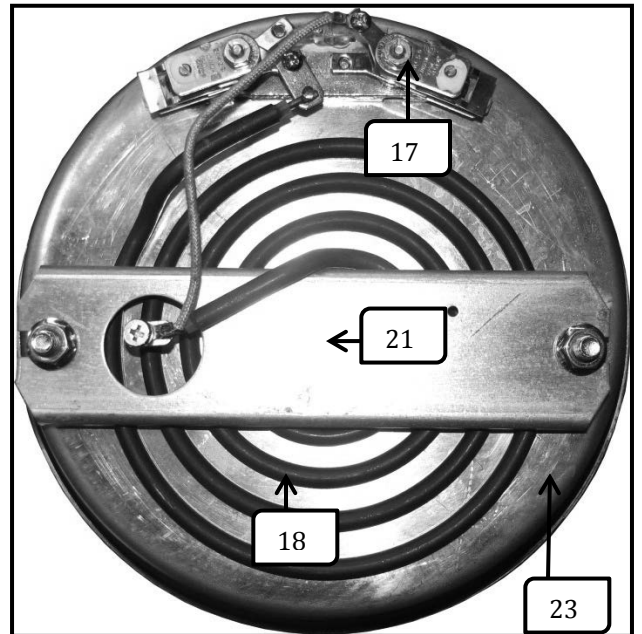


# KETTLE BREAKDOWN

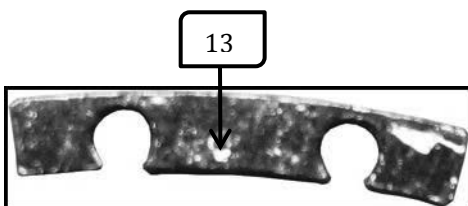
Kettle Part No. 56000, 49434EXN



Model No. 56000 Bottom Assembly

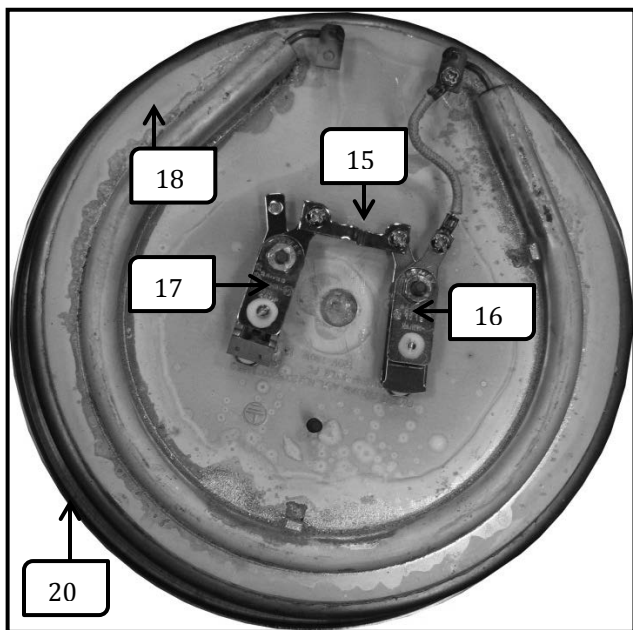
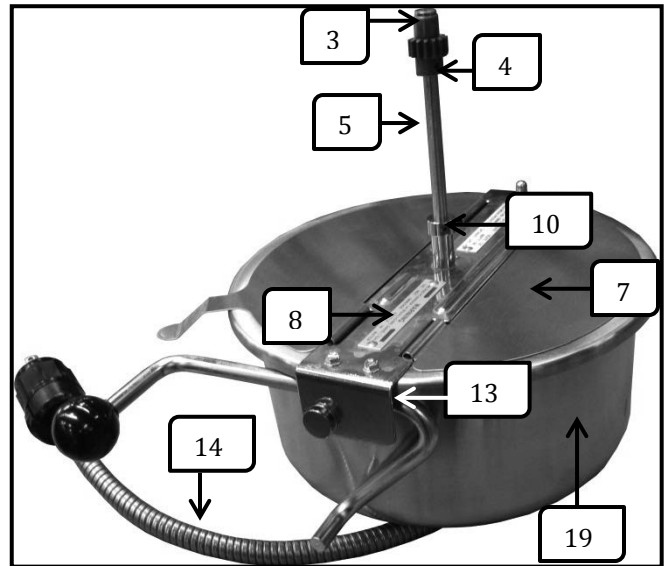
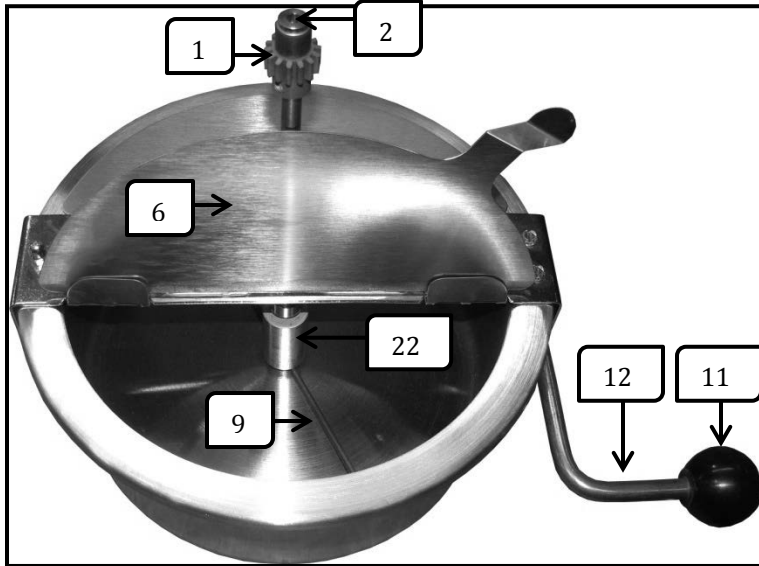


Model No. 49434EXN Bottom Assembly

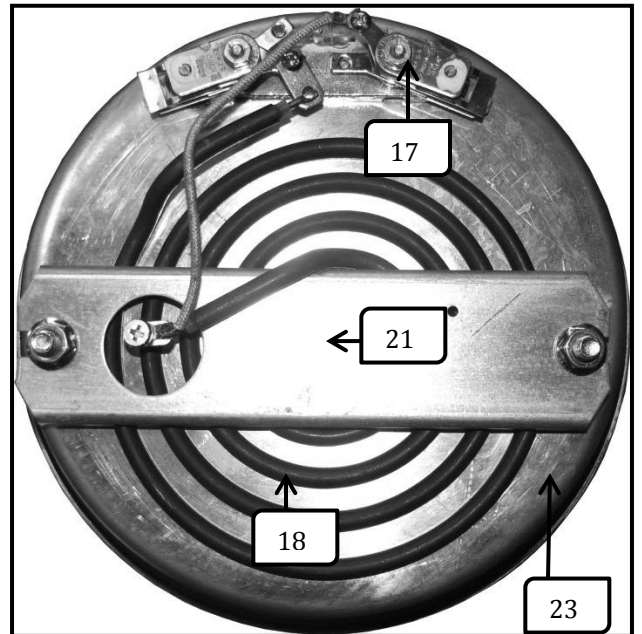


# KETTLE BREAKDOWN

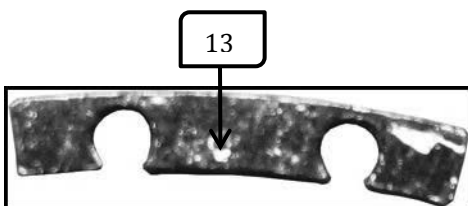
Kettle Part No. 56000, 49434EXN



Model No. 56000 Bottom Assembly



Model No. 49434EXN Bottom Assembly







# KETTLE BREAKDOWN PARTS LIST

*Kettle Part No. 56000, 49434EXN*

ITEM	PART NO.	MODEL(S)	PART NAME	QTY.
1	47060	ALL	Spur Gear	1
2	43434	ALL	Agitator Bearing Hub	1
3	47106	ALL	Needle Bearing	1
4	41742	ALL	Set Screw	3
5	69710	ALL	Agitator Shaft	1
6	49017	ALL	Front Lid With Formend Lifter	1
7	49016	ALL	Rear Kettle Lid	1
8	59102	56000	Crossbar Assembly	1
	49471EXN	49434EXN	Crossbar Assembly	1
9	69714	ALL	Stir Rod	1
10	46649	ALL	Set Collar	3
11	47110	ALL	Knob Dump Handle	1
12	49314	ALL	RH Dump Handle	1
13	49362	ALL	Spacer Dump Handle	1
14	49328	56000	Kettle Lead Assembly	1
	49490	49434EXN	Export Kettle Lead Assembly	1
15	47193	56000	Thermostat Shunt Bar	1
16	76702	56000	Thermostat 525 °F	1
17	76089	56000	Thermostat 450 °F	1
	76089	49434EXN	Thermostat 450 °F	2
18	56006	56000	Kettle/Heater 780W	1
	46652EX	49434EXN	850W Tubular Element	1
19	49431	ALL	6 oz Kettle Shell	1
20	49368	ALL	Kettle Gasket	1
21	49532	49434EXN	Element Clamp	1
22	69715	ALL	Kettle Weight	1
23	49596	49434EXN	6 oz Clad Kettle Assembly	1



# KETTLE BREAKDOWN PARTS LIST

*Kettle Part No. 56000, 49434EXN*

ITEM	PART NO.	MODEL(S)	PART NAME	QTY.
1	47060	ALL	Spur Gear	1
2	43434	ALL	Agitator Bearing Hub	1
3	47106	ALL	Needle Bearing	1
4	41742	ALL	Set Screw	3
5	69710	ALL	Agitator Shaft	1
6	49017	ALL	Front Lid With Formend Lifter	1
7	49016	ALL	Rear Kettle Lid	1
8	59102	56000	Crossbar Assembly	1
	49471EXN	49434EXN	Crossbar Assembly	1
9	69714	ALL	Stir Rod	1
10	46649	ALL	Set Collar	3
11	47110	ALL	Knob Dump Handle	1
12	49314	ALL	RH Dump Handle	1
13	49362	ALL	Spacer Dump Handle	1
14	49328	56000	Kettle Lead Assembly	1
	49490	49434EXN	Export Kettle Lead Assembly	1
15	47193	56000	Thermostat Shunt Bar	1
16	76702	56000	Thermostat 525 °F	1
17	76089	56000	Thermostat 450 °F	1
	76089	49434EXN	Thermostat 450 °F	2
18	56006	56000	Kettle/Heater 780W	1
	46652EX	49434EXN	850W Tubular Element	1
19	49431	ALL	6 oz Kettle Shell	1
20	49368	ALL	Kettle Gasket	1
21	49532	49434EXN	Element Clamp	1
22	69715	ALL	Kettle Weight	1
23	49596	49434EXN	6 oz Clad Kettle Assembly	1