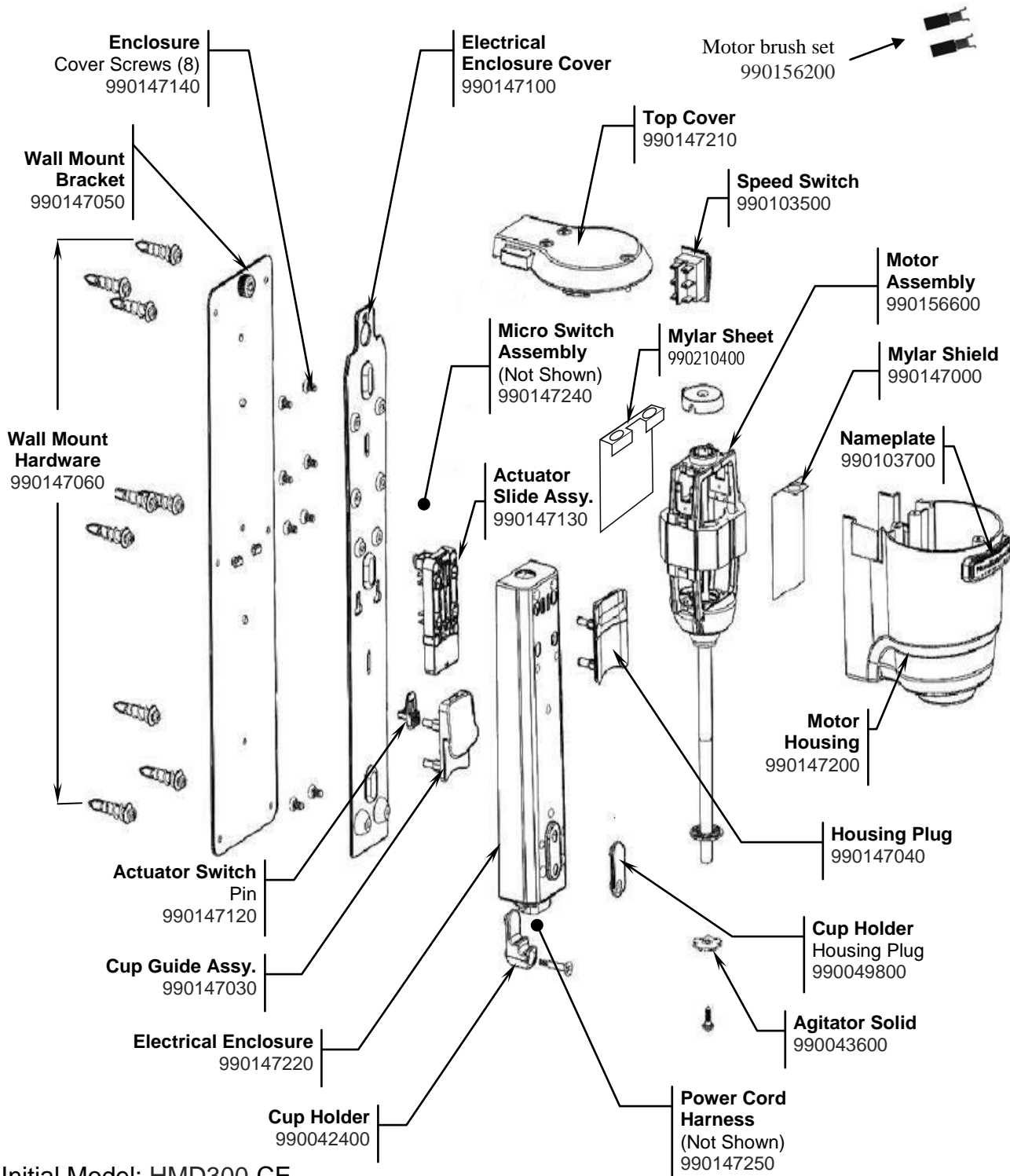



## Parts and Accessories Diagram

**PROPRIETARY RIGHTS NOTICE** This document and all information contained within it is the property of Hamilton Beach Brands, Inc. (HBB). It is confidential and proprietary and has been provided to you for a limited purpose. It must be returned or destroyed upon request. Disclosure, reproduction or use of this document and any information contained within it, in full or in part, for any purpose is forbidden without the prior written consent of HBB. No photographs may be taken of any article fabricated or assembled from this document without the prior written consent of HBB.

### Replacement Parts



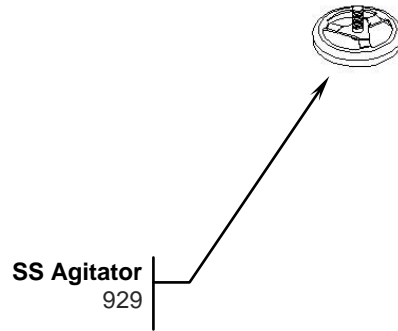
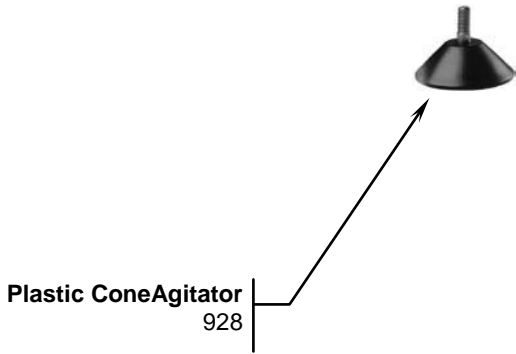
**Initial Model: HMD300-CE**  
**Printed Circuit Board 990167100 – Not Shown**


 4421 Waterfront Drive Glen Allen, VA 23060	Revision Description:		Update Printed Circuit Board p/n 99016700 to 990167100			
	Request Number:	DOC5868	Revision Date:	02/02/2016	Approved by:	DOC5868
	Issue Code(s):		Page:	1 of 2	Document #:	<b>540006610</b>
					Rev:	<b>C</b>

## Parts and Accessories Diagram

**PROPRIETARY RIGHTS NOTICE** This document and all information contained within it is the property of Hamilton Beach Brands, Inc. (HBB). It is confidential and proprietary and has been provided to you for a limited purpose. It must be returned or destroyed upon request. Disclosure, reproduction or use of this document and any information contained within it, in full or in part, for any purpose is forbidden without the prior written consent of HBB. No photographs may be taken of any article fabricated or assembled from this document without the prior written consent of HBB.

### Accessories



 4421 Waterfront Drive Glen Allen, VA 23060	Revision Description:		Update Printed Circuit Board p/n 99016700 to 990167100					
	Request Number:	DOC5868	Revision Date:	02/02/2016	Approved by:	DOC5868		
	Issue Code(s):		Page:	2 of 2	Document #:	<b>540006610</b>	Rev:	<b>C</b>