

HMD400-230V Spindle Mixer

PROPRIETARY RIGHTS NOTICE This document and all information contained within it is the property of Hamilton Beach Brands, Inc. (HBB). It is confidential and proprietary and has been provided to you for a limited purpose. It must be returned or destroyed upon request. Disclosure, reproduction or use of this document and any information contained within it, in full or in part, for any purpose is forbidden without the prior written consent of HBB. No photographs may be taken of any article fabricated or assembled from this document without the prior written consent of HBB.

Trouble shooting guide

- **Symptom:** During normal cycle the unit stops spinning.
- **Cause:** The unit may have over heated and needs to cool down. If cooling does not cure the problem go to the repair guide.

- **Symptom:** Upper button falls down.
- **Cause:** There is too much drag on the upper button from the contents in the cup. This is usually caused by the use of hard ice cream. See agitators in the next section.

- **Symptom:** Container guide falls out of unit.
- **Cause:** Lock Block is worn or weakened. Replace lock block.


Repair Guide

Housing Disassembly

- Turn off the unit and unplug it from the electrical socket.
- Loosen the three screws that hold the top cover in place. Note: The screws have keepers to prevent the screws from coming out of the cover.
- Carefully remove cover from unit.
- The motors, speed switches and lock blocks can all be checked or changed from here. To change the internal switch and RFI board the back of the unit will also need to be removed. The instructions follow.
- Remove the feet,
- Remove the screws holding the back on the unit.
- Carefully remove the rear housing.
- Note: The cord socket will stay in place. Moved correctly the rear cover will come off around the socket.
- Reassemble is reverse order.

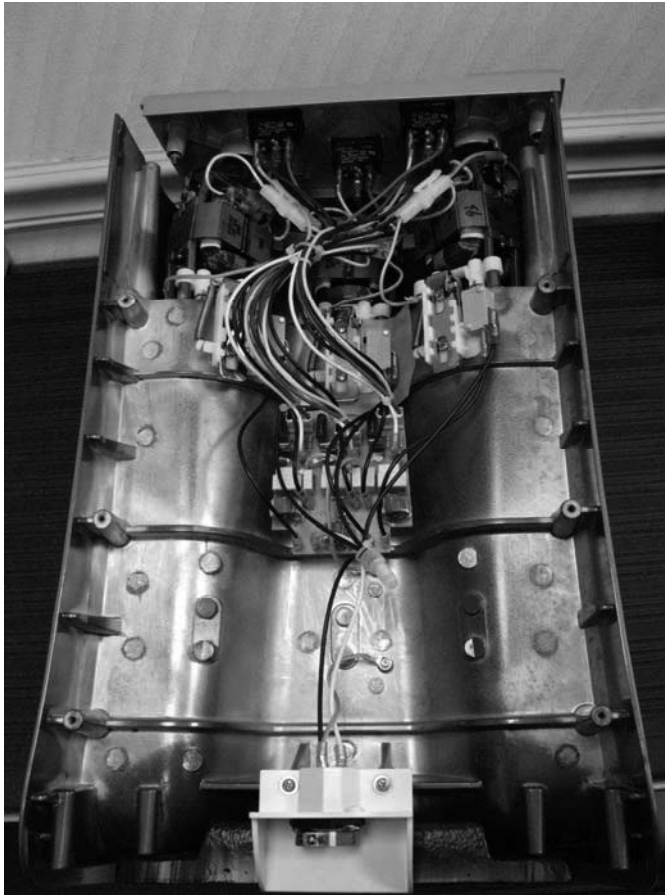


Top removed

 4421 Waterfront Drive Glen Allen, VA 23060	Revision Description:	Production Release.					
	Request Number:	DOC2667	Revision Date:	22 June, 12	Approved by:	DOC2667	
	Issue Code(s):	CS, SP	Page:	1 of 5	Document #:	520006400	Rev:

HMD400-230V Spindle Mixer

PROPRIETARY RIGHTS NOTICE This document and all information contained within it is the property of Hamilton Beach Brands, Inc. (HBB). It is confidential and proprietary and has been provided to you for a limited purpose. It must be returned or destroyed upon request. Disclosure, reproduction or use of this document and any information contained within it, in full or in part, for any purpose is forbidden without the prior written consent of HBB. No photographs may be taken of any article fabricated or assembled from this document without the prior written consent of HBB.



Back Removed

Changing the Motor

- Turn off and unplug the unit.
- Remove the top cover per the instruction in the previous section.
- Unplug the modular plug connecting the motor to the wiring harness.
- Lift the motor out of the machine paying attention to how it is oriented with the housing.
- To install the new motor reverse the process.
- Gently lower the new motor into the housing in the same orientation as the old motor.
- Plug the modular plug back into the wiring harness.
- If the rubber motor mount has come loose from the top of the new motor in the process put it back in place. The cutout goes over the ground screw and the protrusion aims at the rear of the machine.
- Carefully put the top back in place.
- Be careful not to pinch any wires.
- Gently tighten the screws, rotate your efforts so you do not apply too much pressure in one spot at once.
- Plug the machine in and test it.

Hamilton Beach 4421 Waterfront Drive Glen Allen, VA 23060	Revision Description:		Production Release.					
	Request Number:	DOC2667	Revision Date:	22 June, 12	Approved by:	DOC2667		
	Issue Code(s):	CS, SP	Page:	2 of 5	Document #:	520006400	Rev:	A

HMD400-230V Spindle Mixer

PROPRIETARY RIGHTS NOTICE This document and all information contained within it is the property of Hamilton Beach Brands, Inc. (HBB). It is confidential and proprietary and has been provided to you for a limited purpose. It must be returned or destroyed upon request. Disclosure, reproduction or use of this document and any information contained within it, in full or in part, for any purpose is forbidden without the prior written consent of HBB. No photographs may be taken of any article fabricated or assembled from this document without the prior written consent of HBB.

Changing the Speed Switch

- Remove the top cover per the instruction in the Housing Disassembly section above.
- Draw a sketch of where each wire goes and remove the wire connectors.



Figure 2 Speed Switch Wiring

- Push in on both ends of the switch housing and push the switch through the hole in the cover.
- Orient the new switch and push it through the hole from the top of the cover.
- Reattach the wires.
- Replace the cover. Don't pinch any wires.
- Test the unit.

Changing the Lock Block

- Follow the instructions for replacing the motor to the point of removing the motor from the unit.
- Remove the container guide and pin switch actuator.
- Once the motor is out of the way the lock block can be easily changed from the top of the unit.
- Reassemble in reverse order.

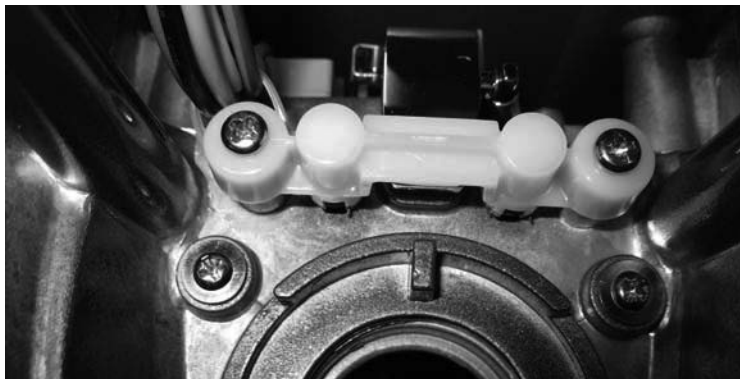



Figure 3 Lock block

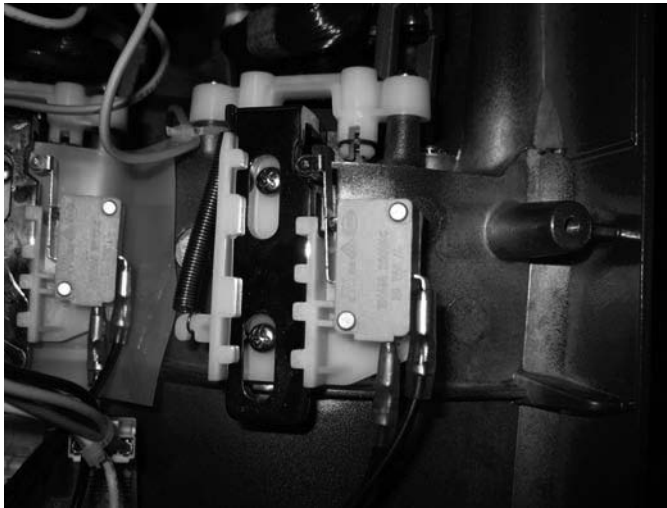
 4421 Waterfront Drive Glen Allen, VA 23060	Revision Description:	Production Release.					
	Request Number:	DOC2667	Revision Date:	22 June, 12	Approved by:	DOC2667	
	Issue Code(s):	CS, SP	Page:	3 of 5	Document #:	520006400	Rev:

HMD400-230V Spindle Mixer

PROPRIETARY RIGHTS NOTICE This document and all information contained within it is the property of Hamilton Beach Brands, Inc. (HBB). It is confidential and proprietary and has been provided to you for a limited purpose. It must be returned or destroyed upon request. Disclosure, reproduction or use of this document and any information contained within it, in full or in part, for any purpose is forbidden without the prior written consent of HBB. No photographs may be taken of any article fabricated or assembled from this document without the prior written consent of HBB.

Changing the Internal Switch

- The internal switch is the one component that you need to remove the rear cover of the housing to replace.
- Follow the instructions in Housing Disassembly to remove the top cover and the rear cover.
- Once the covers are removed the internal switch easy to replace.
- Remove he screws holding the switch assembly in place.
- Remove the old assembly.
- Install the new assembly.
- Put the housings back together.
- Test the unit.



Internal switch

Changing Agitators

- The upper button can be changed or replaced if it falls down.
- Remove the bottom agitator and using a deep well socket or similar tube and a hammer tap the upper button back up the shaft. The shaft is tapered so the higher you go the tighter it will become. The upper button is normally located $\frac{3}{4}$ of an inch from the bottom of the shaft. Do not push it more than a inch up the shaft. If not tight by the time you get to an inch replace the upper button.
- The bottom agitator is held in place by a screw. Simply unscrew the screw to remove the bottom agitator.
- If the screw holding the bottom agitator is hard to remove there are a couple things you can do to aid in the removal of the screw.
- Soak the bottom agitator and spindle end in hot water for a few minutes and try again.
- Wrap masking tape around the shaft, grasp the masking tape with a pair of vice grips to steady the shaft and unscrew the screw.
- In extreme cases it may be necessary to grasp the shaft with one pair of vice grips and use another pair on the screw.

Hamilton Beach 4421 Waterfront Drive Glen Allen, VA 23060	Revision Description:		Production Release.					
	Request Number:	DOC2667	Revision Date:	22 June, 12	Approved by:	DOC2667		
	Issue Code(s):	CS, SP	Page:	4 of 5	Document #:	520006400	Rev:	A

HMD400-230V Spindle Mixer

PROPRIETARY RIGHTS NOTICE This document and all information contained within it is the property of Hamilton Beach Brands, Inc. (HBB). It is confidential and proprietary and has been provided to you for a limited purpose. It must be returned or destroyed upon request. Disclosure, reproduction or use of this document and any information contained within it, in full or in part, for any purpose is forbidden without the prior written consent of HBB. No photographs may be taken of any article fabricated or assembled from this document without the prior written consent of HBB.

Changing a Toggle Switch

- Turn off and unplug the unit.
- Loosen the top cover.
- Carefully fold the top cover back. The wiring will limit the cover's movement.
- Unscrew the rubber boot over the switch you want to remove.
- Pull the switch through the top cover toward the interior.
- Mark the wires and unplug them.
- To install the new switch reverse the process.

Changing the RFI Board

- Turn off and unplug the unit.
Remove the top and back of the unit as described in **Housing Disassembly**.
- Mark and unplug the wires attaché to the RFI board.
- Remove the RFI Board.
- To assemble reverse the process.
-



RFI Board

Hamilton Beach 4421 Waterfront Drive Glen Allen, VA 23060	Revision Description:	Production Release.					
	Request Number:	DOC2667	Revision Date:	22 June, 12	Approved by:	DOC2667	
	Issue Code(s):	CS, SP	Page:	5 of 5	Document #:	520006400	Rev: