

Exploded View Diagram

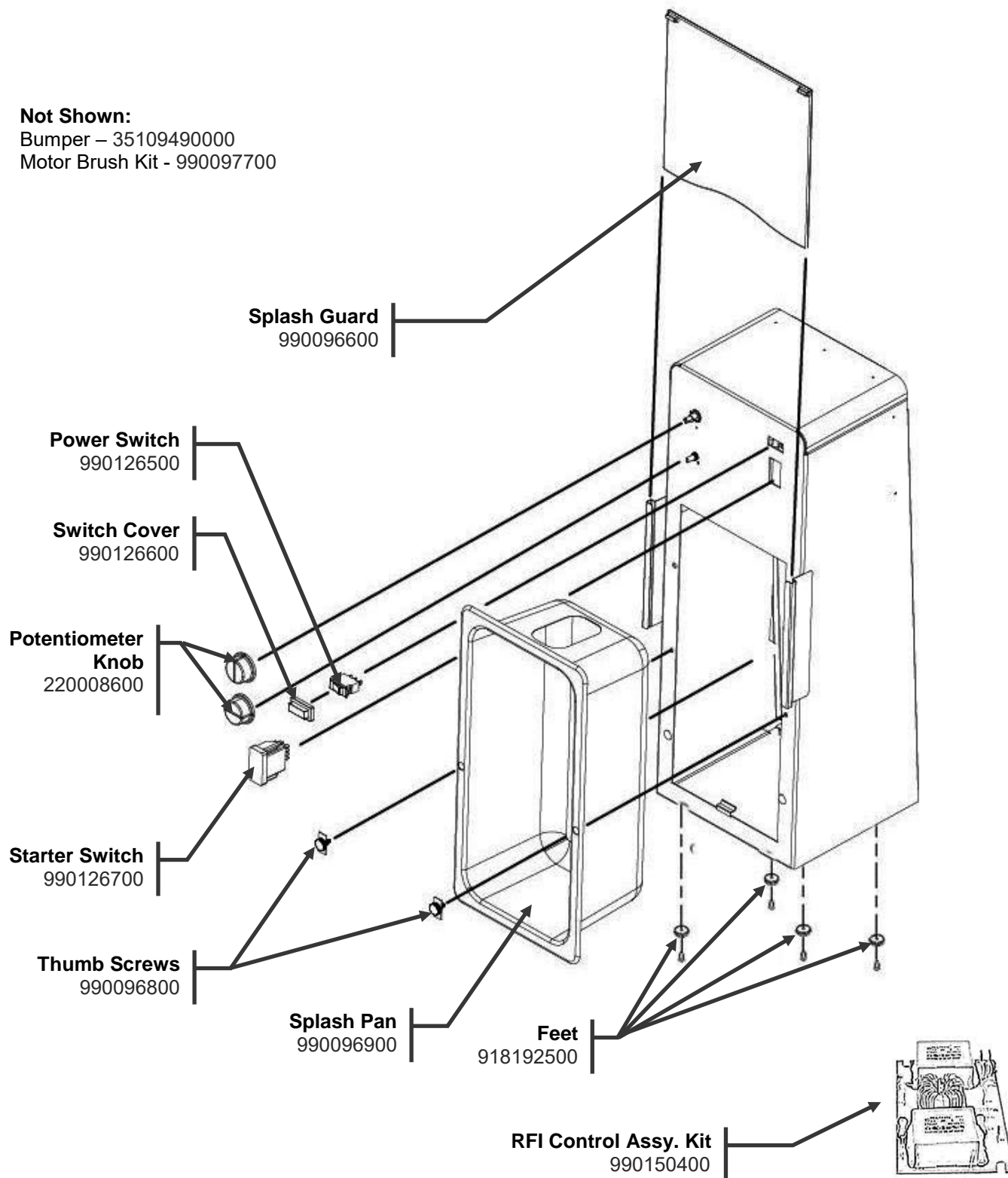
HMD900-CN


PROPRIETARY RIGHTS NOTICE This document and all information contained within it is the property of Hamilton Beach Brands, Inc. (HBB). It is confidential and proprietary and has been provided to you for a limited purpose. It must be returned or destroyed upon request. Disclosure, reproduction or use of this document and any information contained within it, in full or in part, for any purpose is forbidden without the prior written consent of HBB. No photographs may be taken of any article fabricated or assembled from this document without the prior written consent of HBB.

Not Shown:

Bumper – 35109490000

Motor Brush Kit - 990097700

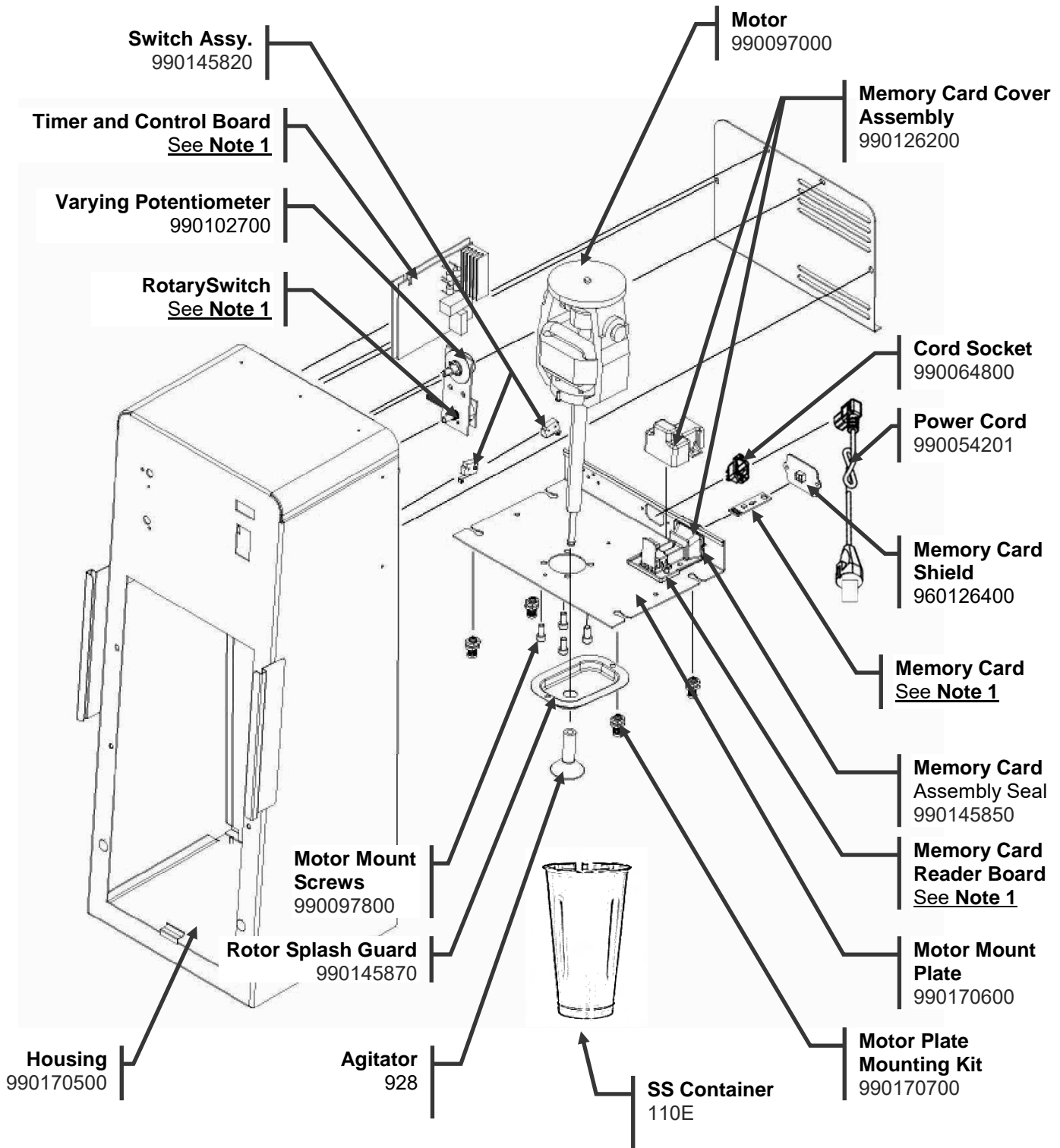


 4421 Waterfront Drive Glen Allen, VA 23060	Revision Description:	Changed Housing and Motor Plate p/ns				
	Request Number:	DOC4531	Revision Date:	3/11/14	Approved by:	DOC4531
	Issue Code(s):	CS, SP	Page:	1 of 3	Document #:	540005410
					Rev:	D


Exploded View Diagram

HMD900-CN

PROPRIETARY RIGHTS NOTICE This document and all information contained within it is the property of Hamilton Beach Brands, Inc. (HBB). It is confidential and proprietary and has been provided to you for a limited purpose. It must be returned or destroyed upon request. Disclosure, reproduction or use of this document and any information contained within it, in full or in part, for any purpose is forbidden without the prior written consent of HBB. No photographs may be taken of any article fabricated or assembled from this document without the prior written consent of HBB.



Note 1: Part of Control Assembly Kit **#990150310** (Same as Main Power #50-1263A-35001)

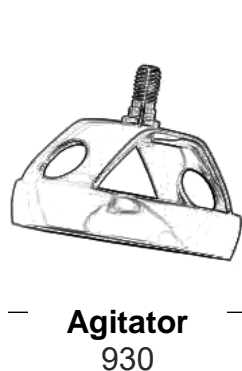
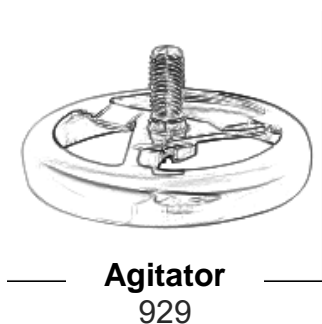
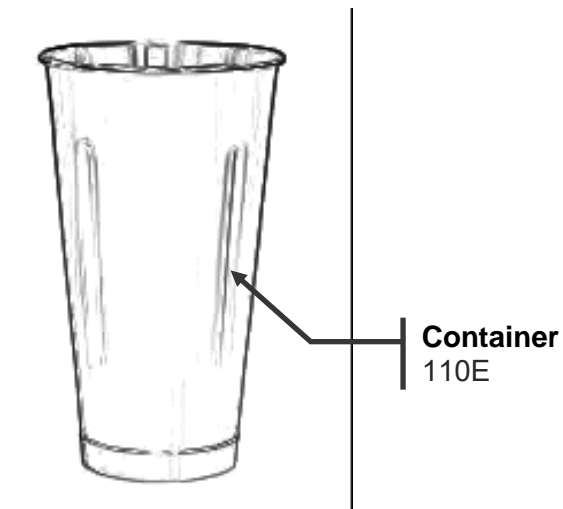
 Hamilton Beach 4421 Waterfront Drive Glen Allen, VA 23060	Revision Description:	Changed Housing and Motor Plate p/ns				
	Request Number:	DOC4531	Revision Date:	3/11/14	Approved by:	DOC4531
	Issue Code(s):	CS, SP	Page:	2 of 3	Document #:	540005410
					Rev:	D


Exploded View Diagram

HMD900-CN

PROPRIETARY RIGHTS NOTICE This document and all information contained within it is the property of Hamilton Beach Brands, Inc. (HBB). It is confidential and proprietary and has been provided to you for a limited purpose. It must be returned or destroyed upon request. Disclosure, reproduction or use of this document and any information contained within it, in full or in part, for any purpose is forbidden without the prior written consent of HBB. No photographs may be taken of any article fabricated or assembled from this document without the prior written consent of HBB.

Accessories:



 4421 Waterfront Drive Glen Allen, VA 23060	Revision Description:		Changed Housing and Motor Plate p/ns					
	Request Number:	DOC4531	Revision Date:	3/11/14	Approved by:	DOC4531		
	Issue Code(s):	CS, SP	Page:	3 of 3	Document #:	540005410	Rev:	D