



Food Rethermalizer/ Bain-Marie Heater

FR-B (BALANCED) Series

FR-3B

FR-6B

FR-4B

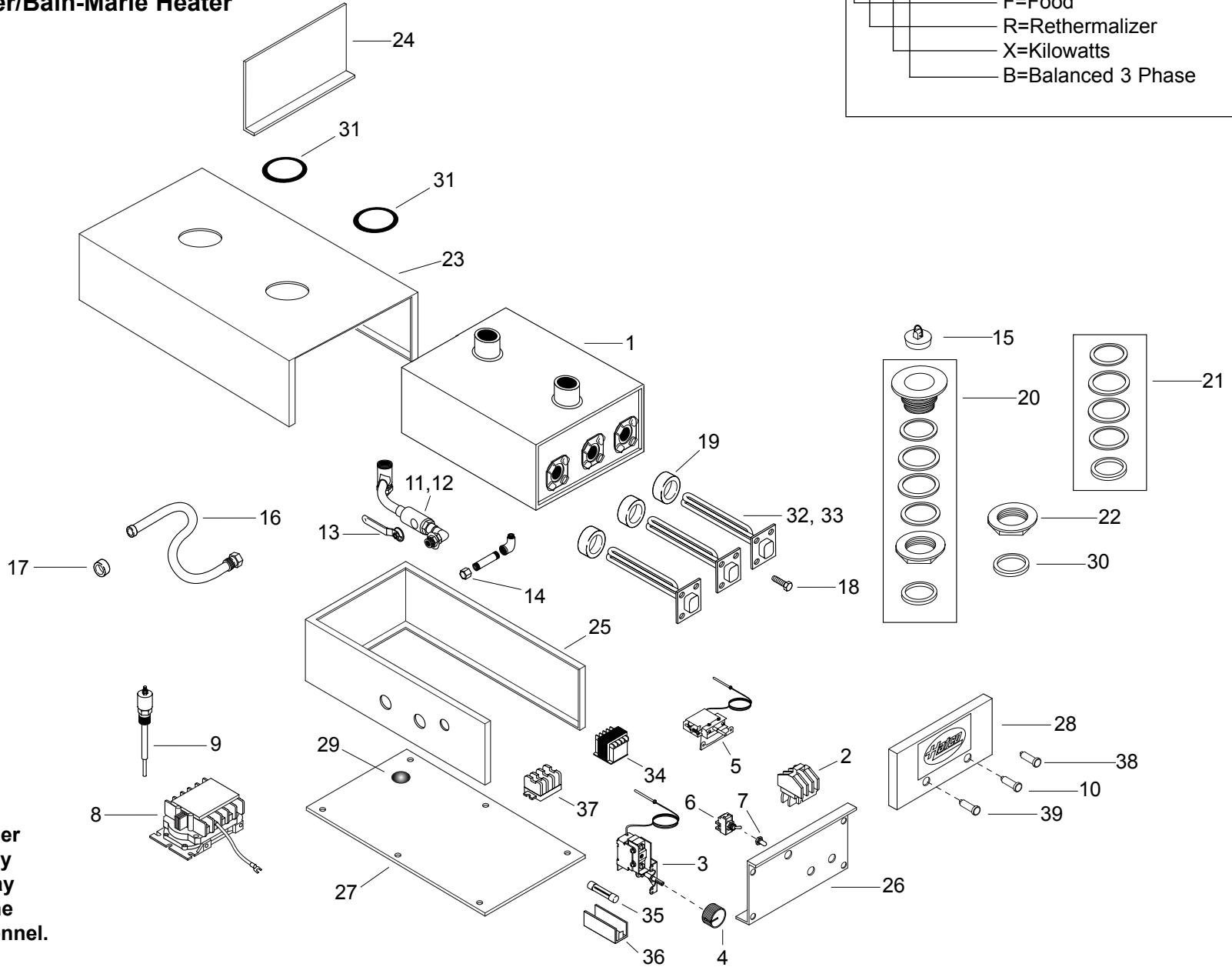
FR-9B

**REPLACEMENT
PARTS LIST**

HATCO FR-BALANCED SERIES
Food Rethermalizer/Bain-Marie Heater

Model Designation

| | |
|-------|--------------------|
| FR-XB | F=Food |
| | R=Rethermalizer |
| | X=Kilowatts |
| | B=Balanced 3 Phase |



⚠ CAUTION - Use of replacement parts other than those supplied by Hatco Corporation may result in damage to the unit or injury to personnel.

PARTS COMMON TO ALL FR-B MODELS

| ITEM | DESCRIPTION | PART NO. | QTY. | ITEM | DESCRIPTION | PART NO. | QTY. |
|------|---|----------------|------|------|----------------------------------|----------------|------|
| 1 | Water Tank | R01.04.006.00 | 1 | 18 | Mounting Bolts, Elements | 05.04.062.00 | 12 |
| 2 | Contactator | 02.01.016.00 | 1 | 19 | Gasket, Element | 05.06.005.00 | 3 |
| 3 | Control, Thermostat 192°F (89°C) | 02.16.016.00 | 1 | 20 | Sink Strainer Assembly Kit | R05.30.009.00 | 2 |
| 4 | Knob, Thermostat Control | 05.30.021.00 | 1 | 21 | Strainer Gasket Kit | R00.05.0002.00 | 1† |
| 5 | High Limit, Thermostat 210°F (99°C) | 02.16.025A.00 | 1 | 22 | Brass Locknut | 05.30.009A.00 | 2 |
| 6 | On/Off Power Switch | R02.19.008A.00 | 1 | 23 | Jacket, Painted | 04.06.089.00 | 1 |
| 7 | Rubber Boot, Toggle Switch | 02.20.040.00 | 1 | | Jacket, S.S.* | 04.06.090.00 | 1 |
| 8 | Control, Low Water Cut Off, (optional) | 02.01.002.00 | 1 | 24 | Rear Plate, Painted | 04.06.022.00 | 1 |
| 9 | Probe, Low Water Cut Off, (optional) | 02.40.001.00 | 1 | | Rear Plate, S.S.* | 04.06.004A.00 | 1 |
| 10 | Indicator Light, Green | 02.19.150.00 | 1 | 25 | Base, Painted | 04.06.113.00 | 1 |
| 11 | Ball Valve, Thread Fitting (old style) | 03.02.001.00 | 1 | | Base, S.S.* | 04.06.114.00 | 1 |
| 12 | Ball Valve, Sweat Fitting (new style) | 03.02.002.00 | 1 | 26 | Base Front, Painted | 04.06.081.00 | 1 |
| 13 | Handle, Sump Drain | 03.02.001B.00 | 1 | | Base Front, S.S.* | 04.06.082.00 | 1 |
| 14 | Drain Cap, Heating Compartment | R03.40.014.00 | 1 | 27 | Bottom Cover, Painted | 04.06.016.00 | 1 |
| 15 | Rubber Stopper | 05.06.026.00 | 1 | | Bottom Cover, S.S.* | 04.06.018.00 | 1 |
| 16 | Flush Hose With Adapter | 05.06.010.00 | 1 | 28 | Front Cover For Two | | |
| 17 | Adapter for Hose | 05.06.007.00 | 1 | | Indicator Lights, S.S. | 04.06.073.00 | 1 |
| | | | | | Front Cover For Three | | |
| | | | | | Indicator Lights, S.S.* | 04.06.074.00 | 1 |
| | | | | 29 | Drain Screen Plug, 1" (3 cm) | 02.20.026.00 | 1 |
| | | | | 30 | Union Gasket | 05.06.009.00 | 2 |
| | | | | 31 | Grommets, Black Molded Rubber | 05.06.008.00 | 2 |

* Not shown.

† Includes all gaskets for both strainers.

Note: S.S. is an abbreviation for stainless steel.

PARTS SPECIFIC TO MODEL FR-3B

| ITEM | DESCRIPTION | 208V Three Phase | 240V Three Phase | 415V Three Phase | 380-415V CE Three Phase | 480V Three Phase |
|------|---|---------------------|---------------------|---------------------|----------------------------|---------------------|
| 32 | Heating Element - Dual, 300/3000 Watts | R02.06.330.00 | R02.06.331.00 | --- | --- | --- |
| 33 | Heating Element, 3000 Watts (Qty. 2-3) | R02.06.300.00 | R02.06.301.00 | --- | R02.06.302.00 | R02.06.303.00 |
| 34 | Transformer | --- | --- | --- | R02.17.003.00 | R02.17.002.00 |
| 35 | Fuse | --- | --- | --- | R02.03.001.02 | R02.03.001.02 |
| 36 | Fuse Holder | --- | --- | --- | 02.03.004.00 | 02.03.004.00 |
| 37 | Terminal Block | R02.15.003.00 | R02.15.003.00 | --- | R02.15.035.00 | R02.15.003.00 |
| 38 | Indicator Light, Blue | --- | --- | --- | 02.19.157.00 | --- |
| 39 | Indicator Light, Yellow | 02.19.152.00 | 02.19.152.00 | --- | --- | 02.19.152.00 |
| | Electrical Drawing | HS1-911 | HS1-911 | --- | HS1-4753 | HC1-1887 |

PARTS SPECIFIC TO MODEL FR-4B

| ITEM | DESCRIPTION | 208V Three Phase | 240V Three Phase | 415V Three Phase | 380-415V CE Three Phase | 480V Three Phase |
|------|---|---------------------|---------------------|---------------------|----------------------------|---------------------|
| 32 | Heating Element - Dual, 300/4500 Watts | R02.06.480.00 | R02.06.481.00 | --- | --- | --- |
| 33 | Heating Element, 4500 Watts (Qty. 2-3) | R02.06.450.00 | R02.06.451.00 | --- | --- | R02.06.452.00 |
| 34 | Transformer | --- | --- | --- | --- | R02.17.002.00 |
| 35 | Fuse | --- | --- | --- | --- | R02.03.001.02 |
| 36 | Fuse Holder | --- | --- | --- | --- | 02.03.004.00 |
| 37 | Terminal Block | R02.15.003.00 | R02.15.003.00 | --- | --- | R02.15.003.00 |
| 38 | Indicator Light, Blue | --- | --- | --- | --- | --- |
| 39 | Indicator Light, Yellow | 02.19.152.00 | 02.19.152.00 | --- | --- | 02.19.152.00 |
| | Electrical Drawing | HS1-911 | HS1-911 | --- | --- | HC1-1887 |

Shaded area reflects export models only.

PARTS SPECIFIC TO MODEL FR-6B

| ITEM | DESCRIPTION | 208V Three Phase | 240V Three Phase | 415V Three Phase | 380-415V CE Three Phase | 480V Three Phase |
|------|---|---------------------|---------------------|---------------------|----------------------------|---------------------|
| 32 | Heating Element - Dual, 300/3000 Watts | R02.06.331.00 | R02.06.332.00 | --- | --- | --- |
| 33 | Heating Element, 3000 Watts (Qty. 2-3) | R02.06.301.00 | R02.06.302.00 | R02.06.303.00 | R02.06.303.00 | R02.06.603.00 |
| 34 | Transformer | --- | --- | R02.17.002.00 | R02.17.002.00 | R02.17.002.00 |
| 35 | Fuse | --- | --- | R02.03.001.02 | R02.03.001.02 | R02.03.001.02 |
| 36 | Fuse Holder | --- | --- | 02.03.004.00 | 02.03.004.00 | 02.03.004.00 |
| 37 | Terminal Block | R02.15.003.00 | R02.15.003.00 | R02.15.003.00 | R02.15.035.00 | R02.15.003.00 |
| 38 | Indicator Light, Blue | --- | --- | --- | 02.19.157.00 | --- |
| 39 | Indicator Light, Yellow | 02.19.152.00 | 02.19.152.00 | 02.19.152.00 | --- | 02.19.152.00 |
| | Electrical Drawing | HS1-299 | HS1-1637 | HS1-5501 | HS1-4754 | HS1-532 |

PARTS SPECIFIC TO MODEL FR-9B

| ITEM | DESCRIPTION | 208V Three Phase | 240V Three Phase | 415V Three Phase | 380-415V CE Three Phase | 480V Three Phase |
|------|---|---------------------|---------------------|---------------------|----------------------------|---------------------|
| 32 | Heating Element - Dual, 300/3000 Watts | R02.06.330.00 | R02.06.331.00 | --- | --- | --- |
| 33 | Heating Element, 3000 Watts (Qty. 2-3) | R02.06.300.00 | R02.06.301.00 | R02.06.301.00 | R02.06.301.00 | R02.06.303.00 |
| 34 | Transformer | --- | --- | R02.17.002.00 | R02.17.002.00 | R02.17.002.00 |
| 35 | Fuse | --- | --- | R02.03.001.02 | R02.03.001.02 | R02.03.001.02 |
| 36 | Fuse Holder | --- | --- | 02.03.004.00 | 02.03.004.00 | 02.03.004.00 |
| 37 | Terminal Block | R02.15.003.00 | R02.15.003.00 | R02.15.003.00 | R02.15.035.00 | R02.15.003.00 |
| 38 | Indicator Light, Blue | --- | --- | --- | 02.19.157.00 | --- |
| 39 | Indicator Light, Yellow | 02.19.152.00 | 02.19.152.00 | 02.19.152.00 | --- | 02.19.157.00 |
| | Electrical Drawing | HC1-2030 | HC1-2030 | HS1-3639 | HS1-4644 | HC1-2537 |

Shaded area reflects export models only.

NOTES

NOTES

HATCO AUTHORIZED PARTS DISTRIBUTORS

ALABAMA

Jones McLeod Appl. Svc.
Birmingham 205-251-0159

ARIZONA

Auth. Comm. Food Equip.
Phoenix 602-234-2443
Byassee Equipment Co.
Phoenix 602-252-0402

CALIFORNIA

Industrial Electric
Huntington Beach 714-379-7100
Chapman Appl. Service
San Diego 619-298-7106
P & D Appliance
S. San Francisco 650-635-1900

COLORADO

All City Service
Denver 303-454-9500
Hawkins Commercial Appliance
Englewood 303-781-5548

DELAWARE

Food Equipment Service
Wilmington 302-996-9363

FLORIDA

Whaley Foodservice Repair
Jacksonville 904-725-7800
Nass Service Co., Inc.
Orlando 407-425-2681
B.G.S.I.
Pompano Beach 954-971-0456
Comm. Appliance Service
Tampa 813-663-0313

GEORGIA

Southeastern Rest. Svc.
Norcross 770-446-6177

HAWAII

Burney's Comm. Service, Inc.
Honolulu 808-848-1466
Food Equip Parts & Service
Honolulu 808-847-4871

ILLINOIS

Parts Town
Broadview 708-865-7278
Eichenauer Elec. Service
Decatur 217-429-4229
Midwest Elec. Appl. Service
Elmhurst 630-279-8000
Cone's Repair Service
Moline 309-797-5323

INDIANA

Comm. Parts & Service, Inc.
Indianapolis 317-545-9655

IOWA

Electric Motor Service Co.
Davenport 319-323-1823

KENTUCKY

Comm. Parts & Service, Inc.
Louisville 502-367-1788

LOUISIANA

Chandlers Parts & Service
Baton Rouge 225-272-6620

LOUISIANA (Continued)

Bana Comm. Parts, Inc.
Shreveport 318-631-6550

MARYLAND

Electric Motor Service
Baltimore 410-467-8080
GCS Service, Inc.
Silver Spring 301-585-7550

MASSACHUSETTS

Ace Service Co., Inc.
Needham 781-449-4220

MICHIGAN

Commercial Kitchen Service
Bay City 517-893-4561
Bildons Appliance Service
Detroit 248-478-3320
Midwest Food Equip. Service
Grandville 616-261-2000

MINNESOTA

GCS Service
Minneapolis 612-546-4221

MISSOURI

GCS Service, Inc.
Kansas City 816-920-5999
Commercial Kitchen Services
St. Louis 314-890-0700
Kaemmerlen Parts & Service
St. Louis 314-535-2222

NEBRASKA

Anderson Electric
Omaha 402-341-1414

NEVADA

Burney's Commercial
Las Vegas 702-736-0006

NEW JERSEY

Jay Hill Repair
Fairfield 973-575-9145
Service Plus
Flanders 973-691-6300

NEW YORK

Acme American Repairs, Inc.
Brooklyn 718-456-6544
Alpro Service Co.
Brooklyn 718-386-2515
Appliance Installation
Buffalo 716-884-7425
Northern Parts Dist.
Plattsburgh 518-563-3200
J. B. Brady, Inc.
Syracuse 315-422-9271

NORTH CAROLINA

Authorized Appliance
Charlotte 704-377-4501

OHIO

Akron/Canton Comm. Svc. Inc.
Akron 330-753-6635
Certified Service Center
Cincinnati 513-772-6600
GCS Service
Columbus 614-476-3225
Electrical Appl. Repair Service
Independence 216-459-8700

OHIO (Continued)

E. A. Wichman Co.
Toledo 419-385-9121

OKLAHOMA

Hagar Rest. Service, Inc.
Oklahoma City 405-235-2184
Krueger, Inc.
Oklahoma City 405-528-8883

OREGON

Bressie Electric Co.
Portland 503-231-7171
Ron's Service, Inc.
Portland 503-624-0890

PENNSYLVANIA

Authorized Factory Service
Coraopolis 412-262-2330
FAST Comm. Appl. Service
Philadelphia 215-288-4800
GCS Service, Inc.
Pittsburgh 412-787-1970
K & D Service Co.
Harrisburg 717-236-9039
Elmer Schultz Services
Philadelphia 215-627-5401
Electric Repair Co.
Reading 610-376-5444

RHODE ISLAND

Marshall Electric Co.
Providence 401-331-1163

SOUTH CAROLINA

Whaley Foodservice Repair
W. Columbia 803-791-4420

TENNESSEE

Camp Electric
Memphis 901-527-7543

TEXAS

City Kitchen Service Co.
Austin 512-719-4445
Stove Parts Supply
Fort Worth 817-831-0381
Armstrong Repair Service
Houston 713-666-7100
Commercial Kitchen Repair Co.
San Antonio 210-735-2811
San Antonio Rest. Equip.
San Antonio 210-824-3271

UTAH

Peterson's Commercial Parts & Svc.
Salt Lake City 801-487-3653

VIRGINIA

Daubers
Norfolk 757-855-4097
Daubers
Springfield 703-866-3600

WASHINGTON

Restaurant Appl. Service
Seattle 206-524-8200

WISCONSIN

A.S.C., Inc.
Madison 608-246-3160
A.S.C., Inc.
Milwaukee 414-543-6460

HATCO CORPORATION

P.O. Box 340500, Milwaukee, WI 53234-0500 U.S.A.

(800) 558-0607 (414) 671-6350

Parts & Service Fax (800) 690-2966 Int'l. Fax (414) 671-3976

www.hatcocorp.com