

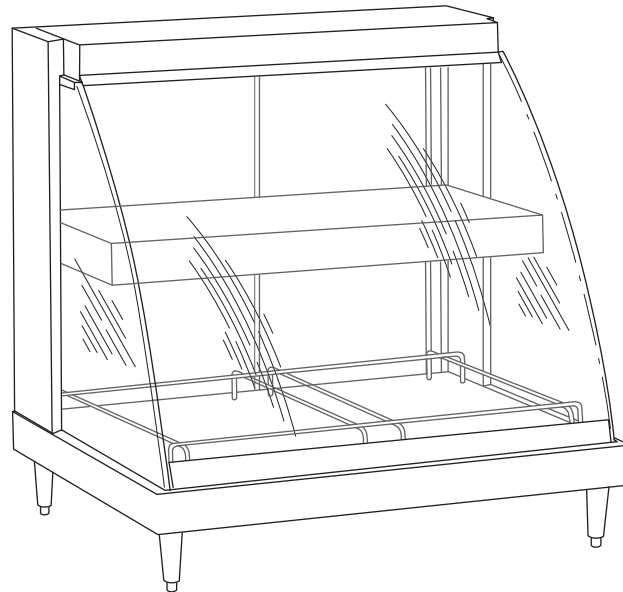


GLO-RAY®

Designer Heated Display Cases

GRCD Series

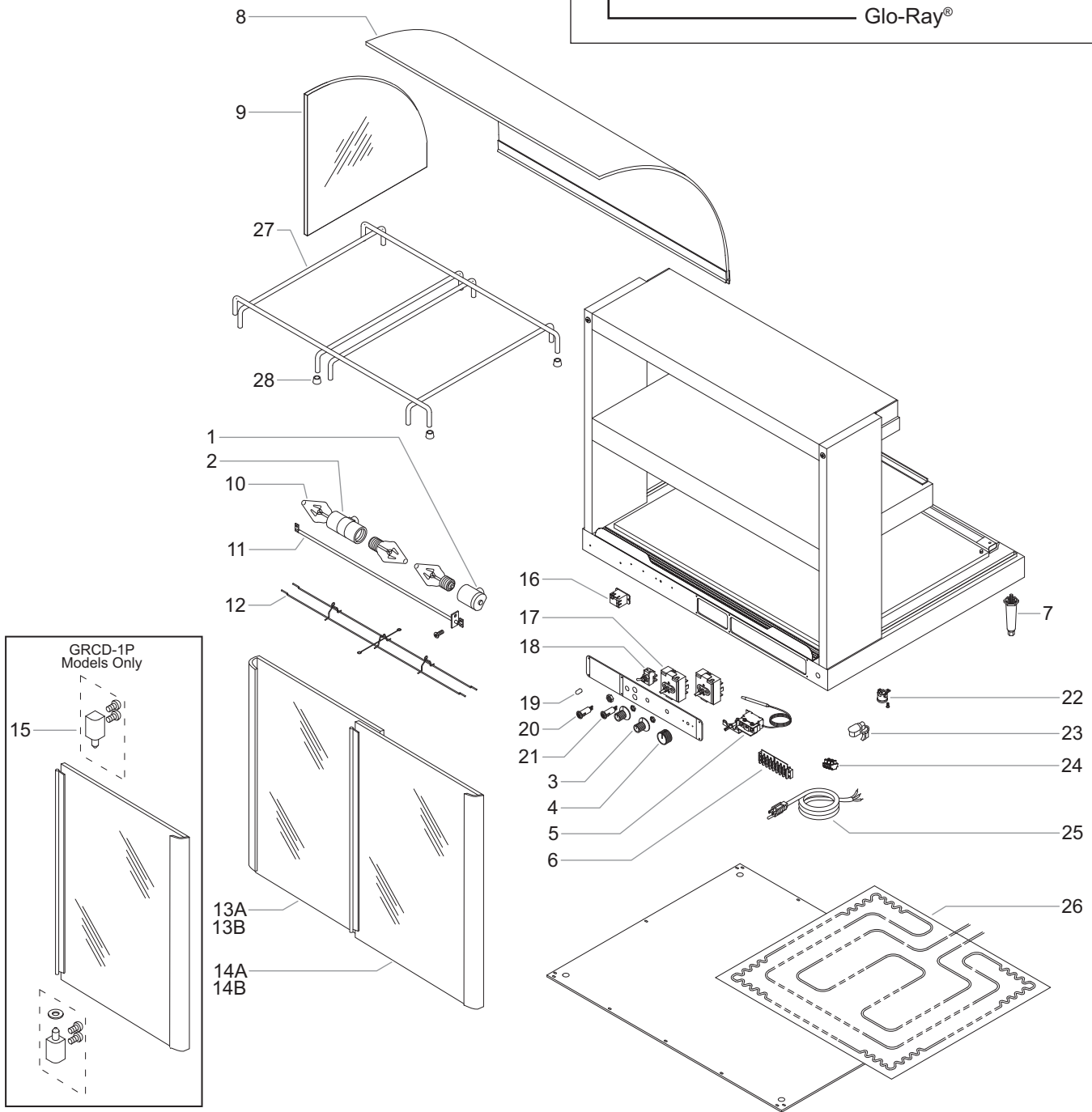
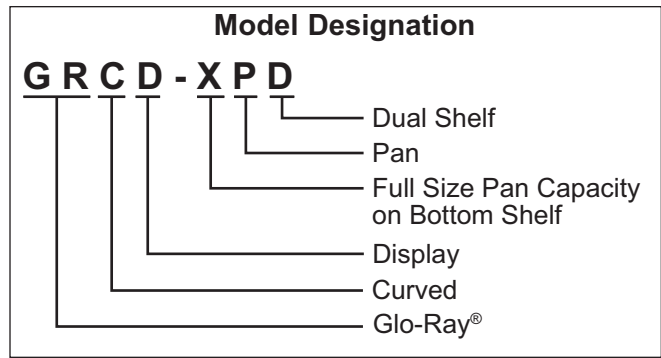
| | | |
|-----------|-----------|-----------|
| GRCD-1P | GRCD-2P | GRCD-3P |
| GRCD-1PD | GRCD-2PD | GRCD-3PD |
| GRCDH-1P | GRCDH-2P | GRCDH-3P |
| GRCDH-1PD | GRCDH-2PD | GRCDH-3PD |



Replacement Parts List

HATCO GLO-RAY® DESIGNER HEATED DISPLAY CASES

GRCD Series



CAUTION

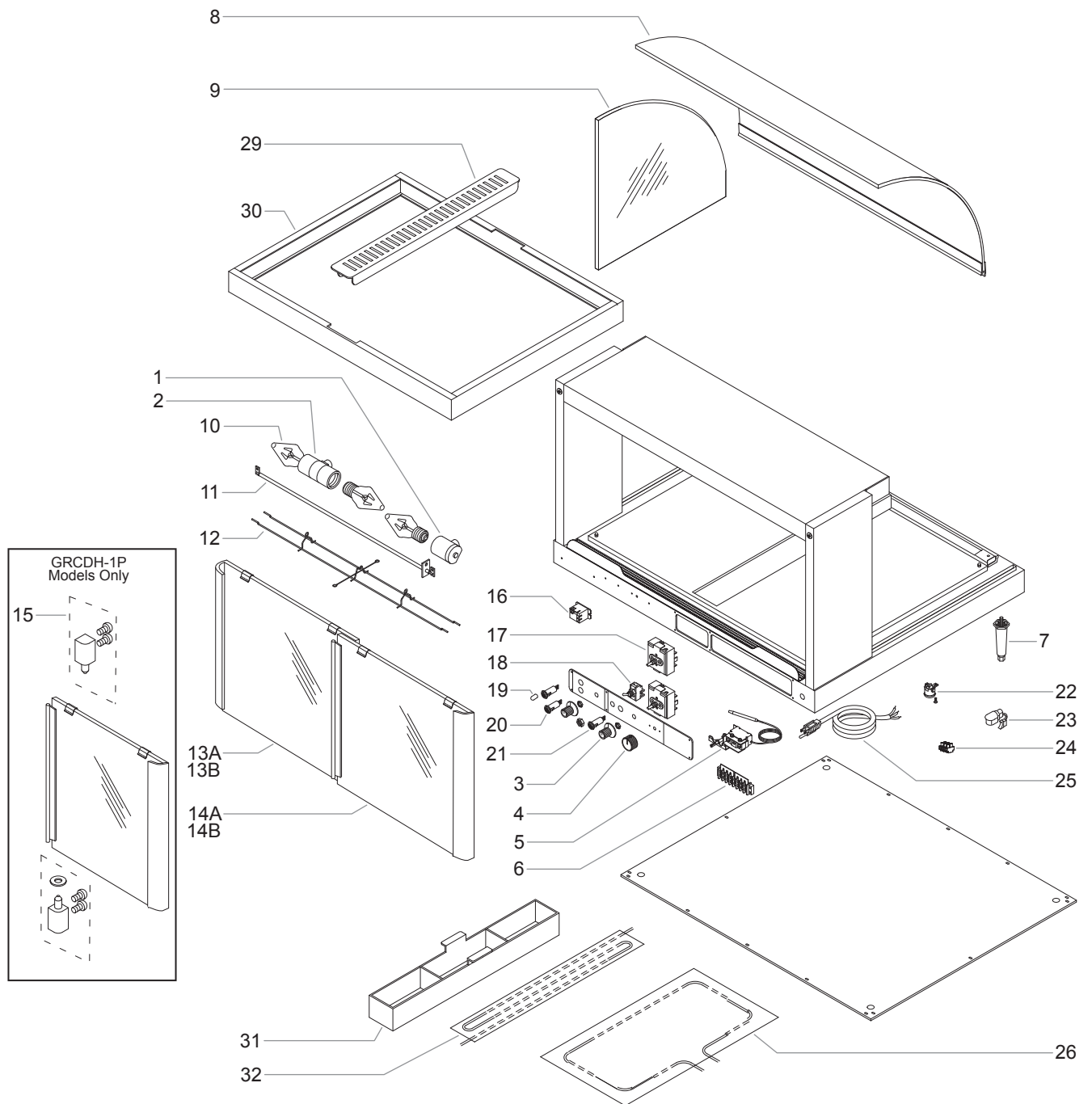
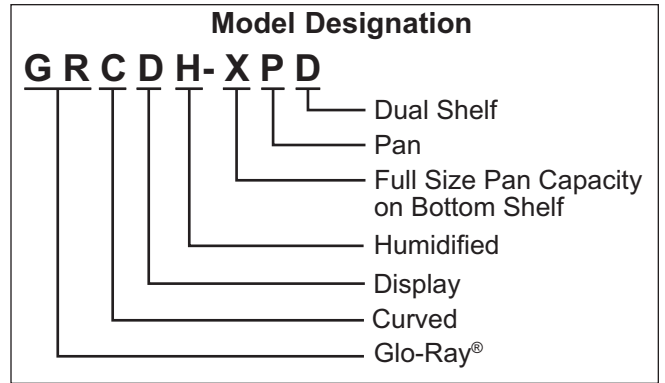
Use of replacement parts other than those supplied by Hatco Corporation may result in damage to unit or injury to personnel and will void all warranties.



24 Hour 7 Day Parts and Service Assistance available in the United States and Canada by calling 800-558-0607.

HATCO GLO-RAY *DESIGNER* HEATED DISPLAY CASES WITH HUMIDITY

GRCDH Series



PARTS COMMON TO ALL GRCD MODELS

| Item | Description | Part Number | Qty. |
|------|-----------------------|--------------|------|
| 1 | Light Socket, Single | 02.30.044.00 | 1-2 |
| 2 | Light Socket, Dual | 02.30.045.00 | 1-2 |
| 3 | Knob, Infinite Switch | 05.30.043.00 | 1-3 |
| 4 | Knob, Thermostat | 05.30.018.00 | 1 |

| Item | Description | Part Number | Qty. |
|------|------------------------|--------------|------|
| 5 | Thermostat, Base | 02.16.030.00 | 1 |
| 6 | Terminal Block, 8-Pole | 02.15.012.00 | 1 |
| 7 | Legs | 05.30.007.00 | 4 |

NOTE: Quantities shown as a range (example = "1-3") are dependent upon the number of shelves and/or if the unit is humidified.

NOTE: The last four digits in a ten digit numerical serial number are the manufacturing date code.

Example: Serial number 9625060751 has a date code of "0751" which indicates the following: 0751

└─ Week Fifty-One
└─ Year 2007

Please note also, prior to January 2001 the serial number date code indicated the month of manufacture.

Example: XXXXXX0007

└─ Month Seven (July)
└─ Year 2000

PARTS SPECIFIC TO MODEL GRCD-1P

| Item Description | 100V Part Number | 120V Part Number | 120V CSA Part Number | 220V Part Number | 240V Part Number | 220-230 V (CE) Part Number | 230-240 V (CE) Part Number |
|------------------------------------|---------------------|---------------------|-------------------------|---------------------|---------------------|-------------------------------|-------------------------------|
| 8 Curved Glass, Front | --- | R04.40.127.00 | R04.40.127.00 | R04.40.127.00 | R04.40.127.00 | R04.40.127.00 | R04.40.127.00 |
| 9 End Glass (Qty. 2) | --- | 04.40.105.00 | 04.40.105.00 | 04.40.105.00 | 04.40.105.00 | 04.40.105.00 | 04.40.105.00 |
| 10 Light Bulb (Qty. 3) | --- | 02.30.043.00 | 02.30.043.00 | 02.30.058.00 | 02.30.058.00 | 02.30.058.00 | 02.30.058.00 |
| 11 Heating Element, Upper | --- | R02.08.258.00 | R02.08.258.00 | R02.08.038.00 | R02.08.261.00 | R02.08.038.00 | R02.08.261.00 |
| 12 Wire Guard | --- | 04.37.100.00 | 04.37.100.00 | 04.37.100.00 | 04.37.100.00 | 04.37.100.00 | 04.37.100.00 |
| 13A Glass Door | --- | R04.40.129.00 | R04.40.129.00 | R04.40.129.00 | R04.40.129.00 | R04.40.129.00 | R04.40.129.00 |
| 13B Glass Door | --- | R04.40.138.00 | R04.40.138.00 | R04.40.138.00 | R04.40.138.00 | R04.40.138.00 | R04.40.138.00 |
| 14A Glass Door | --- | --- | --- | --- | --- | --- | --- |
| 14B Glass Door | --- | --- | --- | --- | --- | --- | --- |
| 15 Hinge Kit | --- | R00.01.0115.00 | R00.01.0115.00 | R00.01.0115.00 | R00.01.0115.00 | R00.01.0115.00 | R00.01.0115.00 |
| 16 Relay | --- | --- | --- | --- | --- | --- | --- |
| 17 Infinite Control Switch | --- | R02.19.018.00 | R02.19.018.00 | R02.19.019.00 | R02.19.019.00 | R02.19.019.00 | R02.19.019.00 |
| 18 On/Off Switch | --- | R02.19.016.00 | R02.19.016.00 | R02.19.008A.00 | R02.19.008A.00 | R02.19.008A.00 | R02.19.008A.00 |
| 19 Rubber Boot, Toggle Switch | --- | --- | --- | --- | --- | 02.20.040.00 | 02.20.040.00 |
| 20 Indicator Light, Red | --- | 02.19.154.00 | 02.19.154.00 | 02.19.151.00 | 02.19.151.00 | --- | --- |
| Indicator Light, Yellow | --- | --- | --- | --- | --- | --- | --- |
| 21 Indicator Light, Green | --- | --- | --- | --- | --- | 02.19.150.00 | 02.19.150.00 |
| 22 High Limit, Automatic | --- | --- | --- | --- | --- | --- | --- |
| High Limit, Manual * | --- | --- | --- | --- | --- | --- | --- |
| 23 Strain Relief | --- | 02.20.206.00 | 02.20.206.00 | 02.20.212.00 | 02.20.212.00 | 02.20.212.00 | 02.20.212.00 |
| 24 Terminal Block, 3-Pole * | --- | --- | --- | --- | --- | R02.15.030.00 | R02.15.030.00 |
| 25 Power Cord w/ Plug | --- | R02.18.030.00 | R02.18.030.00 | 02.18.077.00 | 02.18.066.00 | 02.18.077.00 | 02.18.066.00 |
| 26 Heating Element, Base | --- | 02.05.293.00 | 02.05.293.00 | 02.05.294.00 | 02.05.294.00 | 02.05.294.00 | 02.05.294.00 |
| 27 Pan Rail | --- | 04.22.364.00 | 04.22.364.00 | 04.22.364.00 | 04.22.364.00 | 04.22.364.00 | 04.22.364.00 |
| 28 Rubber Foot, Pan Rail (Qty. 8) | --- | 05.06.039.00 | 05.06.039.00 | 05.06.039.00 | 05.06.039.00 | 05.06.039.00 | 05.06.039.00 |
| 29 Pan Divider (optional) | --- | 04.22.400.00 | 04.22.400.00 | 04.22.400.00 | 04.22.400.00 | 04.22.400.00 | 04.22.400.00 |
| 30 Pan Enclosure, 2 Pan (optional) | --- | --- | --- | --- | --- | --- | --- |
| Pan Enclosure, 1 Pan * | --- | 04.22.357.00 | 04.22.357.00 | 04.22.357.00 | 04.22.357.00 | 04.22.357.00 | 04.22.357.00 |
| 31 Water Trough | --- | --- | --- | --- | --- | --- | --- |
| 32 Heating Element, Water | --- | --- | --- | --- | --- | --- | --- |
| Electrical Drawing | --- | HS2-4741 | HS2-4741 | HS2-4742 | HS2-4743 | HS2-5149 | HS2-5150 |

The shaded areas contain part information for International models only. * Not Shown.



PARTS SPECIFIC TO MODEL GRCD-1PD

| Item Description | 100V Part Number | 120V Part Number | 120V CSA Part Number | 220V Part Number | 240V Part Number | 220-230 V (CE) Part Number | 230-240 V (CE) Part Number |
|-------------------------------------|---------------------|---------------------|-------------------------|---------------------|---------------------|-------------------------------|-------------------------------|
| 8 Curved Glass, Front | --- | R04.40.128.00 | R04.40.128.00 | R04.40.128.00 | R04.40.128.00 | R04.40.128.00 | R04.40.128.00 |
| 9 End Glass (Qty. 2) | --- | 04.40.091.00 | 04.40.091.00 | 04.40.091.00 | 04.40.091.00 | 04.40.091.00 | 04.40.091.00 |
| 10 Light Bulb | --- | 02.30.043.00 | 02.30.043.00 | 02.30.058.00 | 02.30.058.00 | 02.30.058.00 | 02.30.058.00 |
| 11 Heating Element, Upper (Qty. 3) | --- | R02.08.258.00 | R02.08.258.00 | R02.08.258.00 | R02.08.258.00 | R02.08.258.00 | R02.08.258.00 |
| 12 Wire Guard (Qty. 2) | --- | 04.37.100.00 | 04.37.100.00 | 04.37.100.00 | 04.37.100.00 | 04.37.100.00 | 04.37.100.00 |
| 13A Glass Door | --- | R04.40.130.00 | R04.40.130.00 | R04.40.130.00 | R04.40.130.00 | R04.40.130.00 | R04.40.130.00 |
| 13B Glass Door | --- | R04.40.139.00 | R04.40.139.00 | R04.40.139.00 | R04.40.139.00 | R04.40.139.00 | R04.40.139.00 |
| 14A Glass Door | --- | --- | --- | --- | --- | --- | --- |
| 14B Glass Door | --- | --- | --- | --- | --- | --- | --- |
| 15 Hinge Kit | --- | R00.01.0115.00 | R00.01.0115.00 | R00.01.0115.00 | R00.01.0115.00 | R00.01.0115.00 | R00.01.0115.00 |
| 16 Relay | --- | --- | --- | --- | --- | --- | --- |
| 17 Infinite Control Switch (Qty. 2) | --- | R02.19.018.00 | R02.19.018.00 | R02.19.018.00 | R02.19.018.00 | R02.19.018.00 | R02.19.018.00 |
| 18 On/Off Switch | --- | R02.19.016.00 | R02.19.016.00 | R02.19.008A.00 | R02.19.008A.00 | R02.19.008A.00 | R02.19.008A.00 |
| 19 Rubber Boot, Toggle Switch | --- | --- | --- | --- | --- | 02.20.040.00 | 02.20.040.00 |
| 20 Indicator Light, Red | --- | 02.19.154.00 | 02.19.154.00 | 02.19.151.00 | 02.19.151.00 | --- | --- |
| Indicator Light, Yellow | --- | --- | --- | --- | --- | --- | --- |
| 21 Indicator Light, Green | --- | --- | --- | --- | --- | 02.19.150.00 | 02.19.150.00 |
| 22 High Limit, Automatic | --- | --- | --- | --- | --- | --- | --- |
| High Limit, Manual * | --- | --- | --- | --- | --- | --- | --- |
| 23 Strain Relief | --- | 02.20.206.00 | 02.20.206.00 | 02.20.212.00 | 02.20.212.00 | 02.20.212.00 | 02.20.212.00 |
| 24 Terminal Block, 3-Pole * | --- | --- | --- | --- | --- | R02.15.030.00 | R02.15.030.00 |
| 25 Power Cord w/ Plug | --- | R02.18.030.00 | R02.18.030.00 | 02.18.077.00 | 02.18.066.00 | 02.18.077.00 | 02.18.066.00 |
| 26 Heating Element, Base | --- | 02.05.293.00 | 02.05.293.00 | 02.05.294.00 | 02.05.294.00 | 02.05.294.00 | 02.05.294.00 |
| 27 Pan Rail | --- | 04.22.364.00 | 04.22.364.00 | 04.22.364.00 | 04.22.364.00 | 04.22.364.00 | 04.22.364.00 |
| 28 Rubber Foot, Pan Rail (Qty. 8) | --- | 05.06.039.00 | 05.06.039.00 | 05.06.039.00 | 05.06.039.00 | 05.06.039.00 | 05.06.039.00 |
| 29 Water Trough | --- | --- | --- | --- | --- | --- | --- |
| 30 Pan Enclosure, 2 Pan (optional) | --- | --- | --- | --- | --- | --- | --- |
| Pan Enclosure, 1 Pan * | --- | 04.22.357.00 | 04.22.357.00 | 04.22.357.00 | 04.22.357.00 | 04.22.357.00 | 04.22.357.00 |
| 31 Heating Element, Upper (Qty. 3) | --- | R02.08.258.00 | R02.08.258.00 | R02.08.258.00 | R02.08.258.00 | R02.08.258.00 | R02.08.258.00 |
| 32 Heating Element, Water | --- | --- | --- | --- | --- | --- | --- |
| Electrical Drawing | --- | HS2-4748 | HS2-4748 | HS2-4749 | HS2-4750 | HS2-5153 | HS2-5154 |

The shaded areas contain part information for **International models only**. * Not Shown.



PARTS SPECIFIC TO MODEL GRCDH-1P

| Item Description | 100V Part Number | 120V Part Number | 120V CSA Part Number | 220V Part Number | 240V Part Number | 220-230 V (CE) Part Number | 230-240 V (CE) Part Number |
|-------------------------------------|------------------|------------------|----------------------|------------------|------------------|----------------------------|----------------------------|
| 8 Curved Glass, Front | --- | R04.40.127.00 | R04.40.127.00 | R04.40.127.00 | R04.40.127.00 | R04.40.127.00 | R04.40.127.00 |
| 9 End Glass (Qty. 2) | --- | 04.40.105.00 | 04.40.105.00 | 04.40.105.00 | 04.40.105.00 | 04.40.105.00 | 04.40.105.00 |
| 10 Light Bulb | --- | 02.30.043.00 | 02.30.043.00 | 02.30.058.00 | 02.30.058.00 | 02.30.058.00 | 02.30.058.00 |
| 11 Heating Element, Upper | --- | R02.08.258.00 | R02.08.258.00 | R02.08.038.00 | R02.08.261.00 | R02.08.038.00 | R02.08.261.00 |
| 12 Wire Guard | --- | 04.37.100.00 | 04.37.100.00 | 04.37.100.00 | 04.37.100.00 | 04.37.100.00 | 04.37.100.00 |
| 13A Glass Door | --- | R04.40.129.00 | R04.40.129.00 | R04.40.129.00 | R04.40.129.00 | R04.40.129.00 | R04.40.129.00 |
| 13B Glass Door | --- | R04.40.138.00 | R04.40.138.00 | R04.40.138.00 | R04.40.138.00 | R04.40.138.00 | R04.40.138.00 |
| 14A Glass Door | --- | --- | --- | --- | --- | --- | --- |
| 14B Glass Door | --- | --- | --- | --- | --- | --- | --- |
| 15 Hinge Kit | --- | R00.01.0115.00 | R00.01.0115.00 | R00.01.0115.00 | R00.01.0115.00 | R00.01.0115.00 | R00.01.0115.00 |
| 16 Relay | --- | 02.01.088.00 | 02.01.088.00 | 02.01.180.00 | 02.01.105.00 | 02.01.180.00 | 02.01.105.00 |
| 17 Infinite Control Switch (Qty. 2) | --- | R02.19.018.00 | R02.19.018.00 | R02.19.019.00 | R02.19.019.00 | R02.19.019.00 | R02.19.019.00 |
| 18 On/Off Switch | --- | R02.19.016.00 | R02.19.016.00 | R02.19.008A.00 | R02.19.008A.00 | R02.19.008A.00 | R02.19.008A.00 |
| 19 Rubber Boot, Toggle Switch | --- | --- | --- | --- | --- | 02.20.040.00 | 02.20.040.00 |
| 20 Indicator Light, Red | --- | 02.19.154.00 | 02.19.154.00 | 02.19.151.00 | 02.19.151.00 | --- | --- |
| Indicator Light, Yellow | --- | --- | --- | --- | --- | --- | --- |
| 21 Indicator Light, Green | --- | 02.19.155.00 | 02.19.155.00 | 02.19.150.00 | 02.19.150.00 | 02.19.150.00 | 02.19.150.00 |
| 22 High Limit, Automatic | --- | R02.16.036.00 | R02.16.036.00 | R02.16.036.00 | R02.16.036.00 | R02.16.036.00 | R02.16.036.00 |
| High Limit, Manual * | --- | 02.16.071.00 | 02.16.071.00 | 02.16.071.00 | 02.16.071.00 | 02.16.071.00 | 02.16.071.00 |
| 23 Strain Relief | --- | 02.20.206.00 | 02.20.206.00 | 02.20.212.00 | 02.20.212.00 | 02.20.212.00 | 02.20.212.00 |
| 24 Terminal Block, 3-Pole * | --- | --- | --- | --- | --- | R02.15.030.00 | R02.15.030.00 |
| 25 Power Cord w/ Plug | --- | R02.18.030.00 | R02.18.030.00 | 02.18.077.00 | 02.18.066.00 | 02.18.077.00 | 02.18.066.00 |
| 26 Heating Element, Base | --- | 02.05.293.00 | 02.05.293.00 | 02.05.294.00 | 02.05.294.00 | 02.05.294.00 | 02.05.294.00 |
| 27 Pan Rail | --- | --- | --- | --- | --- | --- | --- |
| 28 Rubber Foot, Pan Rail | --- | --- | --- | --- | --- | --- | --- |
| 29 Pan Divider (optional) | --- | 04.22.400.00 | 04.22.400.00 | 04.22.400.00 | 04.22.400.00 | 04.22.400.00 | 04.22.400.00 |
| 30 Pan Enclosure, 2 Pan | --- | --- | --- | --- | --- | --- | --- |
| Pan Enclosure, 1 Pan * | --- | 04.22.357.00 | 04.22.357.00 | 04.22.357.00 | 04.22.357.00 | 04.22.357.00 | 04.22.357.00 |
| 31 Water Trough | --- | 04.22.403.00 | 04.22.403.00 | 04.22.403.00 | 04.22.403.00 | 04.22.403.00 | 04.22.403.00 |
| 32 Heating Element, Water | --- | 02.05.295.00 | 02.05.295.00 | 02.05.296.00 | 02.05.296.00 | 02.05.296.00 | 02.05.296.00 |
| Electrical Drawing | --- | HS2-4744 | HS2-4744 | HS2-4745 | HS2-4746 | HS2-5151 | HS2-5152 |

The shaded areas contain part information for International models only. * Not Shown.



PARTS SPECIFIC TO MODEL GRCDH-1PD

| Item | Description | 100V Part Number | 120V Part Number | 120V CSA Part Number | 220V Part Number | 240V Part Number | 220-230 V (CE) Part Number | 230-240 V (CE) Part Number |
|------|----------------------------------|---------------------|---------------------|-------------------------|---------------------|---------------------|-------------------------------|-------------------------------|
| 8 | Curved Glass, Front | --- | R04.40.128.00 | R04.40.128.00 | R04.40.128.00 | R04.40.128.00 | R04.40.128.00 | R04.40.128.00 |
| 9 | End Glass (Qty. 2) | --- | 04.40.091.00 | 04.40.091.00 | 04.40.091.00 | 04.40.091.00 | 04.40.091.00 | 04.40.091.00 |
| 10 | Light Bulb | --- | 02.30.043.00 | 02.30.043.00 | 02.30.058.00 | 02.30.058.00 | 02.30.058.00 | 02.30.058.00 |
| 11 | Heating Element, Upper (Qty. 3) | --- | R02.08.258.00 | R02.08.258.00 | R02.08.038.00 | R02.08.261.00 | R02.08.038.00 | R02.08.261.00 |
| 12 | Wire Guard (Qty. 2) | --- | 04.37.100.00 | 04.37.100.00 | 04.37.100.00 | 04.37.100.00 | 04.37.100.00 | 04.37.100.00 |
| 13A | Glass Door | --- | R04.40.130.00 | R04.40.130.00 | R04.40.130.00 | R04.40.130.00 | R04.40.130.00 | R04.40.130.00 |
| 13B | Glass Door | --- | R04.40.139.00 | R04.40.139.00 | R04.40.139.00 | R04.40.139.00 | R04.40.139.00 | R04.40.139.00 |
| 14A | Glass Door | --- | --- | --- | --- | --- | --- | --- |
| 14B | Glass Door | --- | --- | --- | --- | --- | --- | --- |
| 15 | Hinge Kit | --- | R00.01.0115.00 | R00.01.0115.00 | R00.01.0115.00 | R00.01.0115.00 | R00.01.0115.00 | R00.01.0115.00 |
| 16 | Relay | --- | 02.01.088.00 | 02.01.088.00 | 02.01.080.00 | 02.01.105.00 | 02.01.080.00 | 02.01.105.00 |
| 17 | Infinite Control Switch (Qty. 3) | --- | R02.19.018.00 | R02.19.019.00 | R02.19.019.00 | R02.19.019.00 | R02.19.019.00 | R02.19.019.00 |
| 18 | On/Off Switch | --- | R02.19.016.00 | R02.19.016.00 | R02.19.008A.00 | R02.19.008A.00 | R02.19.008A.00 | R02.19.008A.00 |
| 19 | Rubber Boot, Toggle Switch | --- | --- | --- | --- | --- | 02.20.040.00 | 02.20.040.00 |
| 20 | Indicator Light, Red | --- | 02.19.154.00 | 02.19.154.00 | 02.19.151.00 | 02.19.151.00 | --- | --- |
| | Indicator Light, Yellow | --- | --- | --- | --- | --- | --- | --- |
| 21 | Indicator Light, Green | --- | 02.19.155.00 | 02.19.155.00 | 02.19.150.00 | 02.19.150.00 | 02.19.150.00 | 02.19.150.00 |
| 22 | High Limit, Automatic | --- | R02.16.036.00 | R02.16.036.00 | R02.16.036.00 | R02.16.036.00 | R02.16.036.00 | R02.16.036.00 |
| | High Limit, Manual * | --- | 02.16.071.00 | 02.16.071.00 | 02.16.071.00 | 02.16.071.00 | 02.16.071.00 | 02.16.071.00 |
| 23 | Strain Relief | --- | 02.20.206.00 | 02.20.206.00 | 02.20.212.00 | 02.20.212.00 | 02.20.212.00 | 02.20.212.00 |
| 24 | Terminal Block, 3-Pole * | --- | --- | --- | --- | --- | R02.15.030.00 | R02.15.030.00 |
| 25 | Power Cord w/ Plug | --- | R02.18.030.00 | R02.18.030.00 | 02.18.077.00 | 02.18.066.00 | 02.18.077.00 | 02.18.066.00 |
| 26 | Heating Element, Base (Qty. 2) | --- | 02.05.293.00 | 02.05.293.00 | 02.05.294.00 | 02.05.294.00 | 02.05.294.00 | 02.05.294.00 |
| 27 | Pan Rail | --- | --- | --- | --- | --- | --- | --- |
| 28 | Rubber Foot, Pan Rail | --- | --- | --- | --- | --- | --- | --- |
| 29 | Pan Divider (optional) | --- | 04.22.400.00 | 04.22.400.00 | 04.22.400.00 | 04.22.400.00 | 04.22.400.00 | 04.22.400.00 |
| 30 | Pan Enclosure, 2 Pan * | --- | --- | --- | --- | --- | --- | --- |
| | Pan Enclosure, 1 Pan * | --- | 04.22.357.00 | 04.22.357.00 | 04.22.357.00 | 04.22.357.00 | 04.22.357.00 | 04.22.357.00 |
| 31 | Water Trough | --- | 04.22.403.00 | 04.22.403.00 | 04.22.403.00 | 04.22.403.00 | 04.22.403.00 | 04.22.403.00 |
| 32 | Heating Element, Water | --- | 02.05.295.00 | 02.05.295.00 | 02.05.296.00 | 02.05.296.00 | 02.05.296.00 | 02.05.296.00 |
| | Electrical Drawing | --- | HS2-4751 | HS2-4751 | HS2-4752 | HS2-4753 | HS2-5155 | HS2-5156 |

The shaded areas contain part information for International models only. * Not Shown.



PARTS SPECIFIC TO MODEL GRCD-2P

| Item Description | 100V Part Number | 120V Part Number | 120V CSA Part Number | 220V Part Number | 240V Part Number | 220-230 V (CE) Part Number | 230-240 V (CE) Part Number |
|--|------------------|------------------|----------------------|------------------|------------------|----------------------------|----------------------------|
| 8 Curved Glass, Front | --- | 04.40.106.00 | R04.40.106.00 | R04.40.106.00 | R04.40.106.00 | R04.40.106.00 | R04.40.106.00 |
| 9 End Glass (Qty. 2) | --- | 04.40.105.00 | 04.40.105.00 | 04.40.105.00 | 04.40.105.00 | 04.40.105.00 | 04.40.105.00 |
| 10 Light Bulb (Qty. 3) | --- | 02.30.043.00 | 02.30.043.00 | 02.30.058.00 | 02.30.058.00 | 02.30.058.00 | 02.30.058.00 |
| 11 Heating Element, Upper | --- | R02.08.202.00 | R02.08.202.00 | R02.08.250.00 | R02.08.251.00 | R02.08.250.00 | R02.08.251.00 |
| 12 Wire Guard (Qty. 2) | --- | 04.37.100.00 | 04.37.100.00 | 04.37.100.00 | 04.37.100.00 | 04.37.100.00 | 04.37.100.00 |
| 13A Glass Door, Inner, Left Hand | --- | R00.01.0026.00 | R00.01.0026.00 | R00.01.0026.00 | R00.01.0026.00 | R00.01.0026.00 | R00.01.0026.00 |
| 13B Glass Door, Inner, Mirror, Left Hand | --- | R00.01.0034.00 | R00.01.0034.00 | R00.01.0034.00 | R00.01.0034.00 | R00.01.0034.00 | R00.01.0034.00 |
| 14A Glass Door, Outer, Right Hand | --- | R00.01.0025.00 | R00.01.0025.00 | R00.01.0025.00 | R00.01.0025.00 | R00.01.0025.00 | R00.01.0025.00 |
| 14B Glass Door, Outer, Mirror, Right Hand | --- | R00.01.0033.00 | R00.01.0033.00 | R00.01.0033.00 | R00.01.0033.00 | R00.01.0033.00 | R00.01.0033.00 |
| 15 Hinge Kit | --- | --- | --- | --- | --- | --- | --- |
| 16 Relay | --- | --- | --- | --- | --- | --- | --- |
| 17 Infinite Control Switch | --- | R02.19.018.00 | R02.19.018.00 | R02.19.019.00 | R02.19.019.00 | R02.19.019.00 | R02.19.019.00 |
| 18 On/Off Switch | --- | R02.19.016.00 | R02.19.016.00 | R02.19.006.00 | R02.19.006.00 | R02.19.008A.00 | R02.19.008A.00 |
| 19 Rubber Boot, Toggle Switch | --- | --- | --- | --- | --- | 02.20.040.00 | 02.20.040.00 |
| 20 Indicator Light, Red | --- | 02.19.154.00 | 02.19.154.00 | 02.19.151.00 | 02.19.151.00 | --- | --- |
| Indicator Light, Yellow | --- | --- | --- | --- | --- | --- | --- |
| 21 Indicator Light, Green | --- | --- | --- | --- | --- | 02.19.150.00 | 02.19.150.00 |
| 22 High Limit, Automatic | --- | --- | --- | --- | --- | --- | --- |
| High Limit, Manual * | --- | --- | --- | --- | --- | --- | --- |
| 23 Strain Relief | --- | 02.20.206.00 | 02.20.206.00 | 02.20.212.00 | 02.20.212.00 | 02.20.212.00 | 02.20.212.00 |
| 24 Terminal Block, 3-Pole * | --- | --- | --- | --- | --- | R02.15.030.00 | R02.15.030.00 |
| 25 Power Cord w/ Plug | --- | R02.18.030.00 | R02.18.030.00 | 02.18.077.00 | 02.18.066.00 | 02.18.077.00 | 02.18.066.00 |
| 26 Heating Element, Base (Qty. 2) | --- | 02.05.293.00 | 02.05.293.00 | 02.05.294.00 | 02.05.294.00 | 02.05.294.00 | 02.05.294.00 |
| 27 Pan Rail | --- | 04.22.030.00 | 04.22.030.00 | 04.22.030.00 | 04.22.030.00 | 04.22.030.00 | 04.22.030.00 |
| 28 Rubber Foot, Pan Rail (Qty. 12) | --- | 05.06.039.00 | 05.06.039.00 | 05.06.039.00 | 05.06.039.00 | 05.06.039.00 | 05.06.039.00 |
| 29 Pan Divider (optional) | --- | 04.22.400.00 | 04.22.400.00 | 04.22.400.00 | 04.22.400.00 | 04.22.400.00 | 04.22.400.00 |
| 30 Pan Enclosure, 2 Pan (optional) | --- | 04.22.406.00 | 04.22.406.00 | 04.22.406.00 | 04.22.406.00 | 04.22.406.00 | 04.22.406.00 |
| Pan Enclosure, 1 Pan * | --- | --- | --- | --- | --- | --- | --- |
| 31 Water Trough | --- | --- | --- | --- | --- | --- | --- |
| 32 Heating Element, Water Electrical Drawing | --- | HS2-3538 | HS2-3538 | HS2-3542 | HS2-3542 | HS2-4159 | HS2-4160 |

The shaded areas contain part information for **International models only**. * Not Shown.



PARTS SPECIFIC TO MODEL GRCD-2PD

| Item | Description | 100V Part Number | 120V Part Number | 120V CSA Part Number | 220V Part Number | 240V Part Number | 220-230 V (CE) Part Number | 230-240 V (CE) Part Number |
|------|---------------------------------------|---------------------|---------------------|-------------------------|---------------------|---------------------|-------------------------------|-------------------------------|
| 8 | Curved Glass, Front | --- | R04.40.095.00 | R04.40.095.00 | R04.40.095.00 | R04.40.095.00 | R04.40.095.00 | R04.40.095.00 |
| 9 | End Glass (Qty. 2) | --- | 04.40.091.00 | 04.40.091.00 | 04.40.091.00 | 04.40.091.00 | 04.40.091.00 | 04.40.091.00 |
| 10 | Light Bulb (Qty. 3) | --- | 02.30.043.00 | 02.30.043.00 | 02.30.058.00 | 02.30.058.00 | 02.30.058.00 | 02.30.058.00 |
| 11 | Heating Element, Upper (Qty. 3) | --- | R02.08.222.00 | R02.08.222.00 | R02.08.232.00 | R02.08.232.00 | R02.08.232.00 | R02.08.265.00 |
| 12 | Wire Guard (Qty. 6) | --- | 04.37.100.00 | 04.37.100.00 | 04.37.100.00 | 04.37.100.00 | 04.37.100.00 | 04.37.100.00 |
| 13A | Glass Door, Inner, Left Hand | --- | R00.01.0030.00 | R00.01.0030.00 | R00.01.0030.00 | R00.01.0030.00 | R00.01.0030.00 | R00.01.0030.00 |
| 13B | Glass Door, Inner, Mirror, Left Hand | --- | R00.01.0038.00 | R00.01.0038.00 | R00.01.0038.00 | R00.01.0038.00 | R00.01.0038.00 | R00.01.0038.00 |
| 14A | Glass Door, Outer, Right Hand | --- | R00.01.0029.00 | R00.01.0029.00 | R00.01.0029.00 | R00.01.0029.00 | R00.01.0029.00 | R00.01.0029.00 |
| 14B | Glass Door, Outer, Mirror, Right Hand | --- | R00.01.0037.00 | R00.01.0037.00 | R00.01.0037.00 | R00.01.0037.00 | R00.01.0037.00 | R00.01.0037.00 |
| 15 | Hinge Kit | --- | --- | --- | --- | --- | --- | --- |
| 16 | Relay | --- | --- | --- | --- | --- | --- | --- |
| 17 | Infinite Control Switch (Qty. 2) | --- | R02.19.018.00 | R02.19.018.00 | R02.19.019.00 | R02.19.019.00 | R02.19.019.00 | R02.19.019.00 |
| 18 | On/Off Switch | --- | R02.19.016.00 | R02.19.016.00 | R02.19.006.00 | R02.19.006.00 | R02.19.006.00 | R02.19.006.00 |
| 19 | Rubber Boot, Toggle Switch | --- | --- | --- | --- | --- | 02.20.040.00 | 02.20.040.00 |
| 20 | Indicator Light, Red | --- | 02.19.154.00 | 02.19.154.00 | 02.19.151.00 | 02.19.151.00 | --- | --- |
| 20 | Indicator Light, Yellow | --- | --- | --- | --- | --- | --- | --- |
| 21 | Indicator Light, Green | --- | --- | --- | --- | --- | 02.19.150.00 | 02.19.150.00 |
| 22 | High Limit, Automatic | --- | --- | --- | --- | --- | --- | --- |
| 22 | High Limit, Manual * | --- | --- | --- | --- | --- | --- | --- |
| 23 | Strain Relief | --- | 02.20.206.00 | 02.20.212.00 | 02.20.206.00 | 02.20.206.00 | 02.20.212.00 | 02.20.212.00 |
| 24 | Terminal Block, 3-Pole * | --- | --- | --- | --- | --- | R02.15.030.00 | R02.15.030.00 |
| 25 | Power Cord w/ Plug | --- | R02.18.030.00 | R02.18.030.00 | 02.18.077.00 | 02.18.068.00 | 02.18.077.00 | 02.18.068.00 |
| 26 | Heating Element, Base (Qty. 2) | --- | 02.05.293.00 | 02.05.293.00 | 02.05.294.00 | 02.05.294.00 | 02.05.294.00 | 02.05.294.00 |
| 27 | Pan Rail | --- | 04.22.030.00 | 04.22.030.00 | 04.22.030.00 | 04.22.030.00 | 04.22.030.00 | 04.22.030.00 |
| 28 | Rubber Foot, Pan Rail (Qty. 12) | --- | 05.06.039.00 | 05.06.039.00 | 05.06.039.00 | 05.06.039.00 | 05.06.039.00 | 05.06.039.00 |
| 29 | Pan Divider (optional) | --- | 04.22.400.00 | 04.22.400.00 | 04.22.400.00 | 04.22.400.00 | 04.22.400.00 | 04.22.400.00 |
| 30 | Pan Enclosure, 2 Pan (optional) | --- | 04.22.406.00 | 04.22.406.00 | 04.22.406.00 | 04.22.406.00 | 04.22.406.00 | 04.22.406.00 |
| 30 | Pan Enclosure, 1 Pan * | --- | --- | --- | --- | --- | --- | --- |
| 31 | Water Trough | --- | --- | --- | --- | --- | --- | --- |
| 32 | Heating Element, Water | --- | --- | --- | --- | --- | --- | --- |
| 32 | Electrical Drawing | --- | HS2-3314 | HS2-3314 | HS2-3420 | HS2-3422 | HS2-4167 | HS2-4170 |

The shaded areas contain part information for International models only. * Not Shown.



PARTS SPECIFIC TO MODEL GRCDH-2P

| Item | Description | 100V Part Number | 120V Part Number | 120V CSA Part Number | 220V Part Number | 240V Part Number | 220-230 V (CE) Part Number | 230-240 V (CE) Part Number |
|------|---------------------------------------|---------------------|---------------------|-------------------------|---------------------|---------------------|-------------------------------|-------------------------------|
| 8 | Curved Glass, Front | R04.40.106.00 | R04.40.106.00 | R04.40.106.00 | R04.40.106.00 | R04.40.106.00 | R04.40.106.00 | R04.40.106.00 |
| 9 | End Glass (Qty. 2) | 04.40.105.00 | 04.40.105.00 | 04.40.105.00 | 04.40.105.00 | 04.40.105.00 | 04.40.105.00 | 04.40.105.00 |
| 10 | Light Bulb (Qty. 3) | 02.30.043.00 | 02.30.043.00 | 02.30.043.00 | 02.30.058.00 | 02.30.058.00 | 02.30.058.00 | 02.30.058.00 |
| 11 | Heating Element, Upper | R02.08.560.00 | R02.08.202.00 | R02.08.202.00 | R02.08.250.00 | R02.08.251.00 | R02.08.250.00 | R02.08.251.00 |
| 12 | Wire Guard (Qty. 2) | 04.37.100.00 | 04.37.100.00 | 04.37.100.00 | 04.37.100.00 | 04.37.100.00 | 04.37.100.00 | 04.37.100.00 |
| 13A | Glass Door, Inner, Left Hand | R00.01.0026.00 | R00.01.0026.00 | R00.01.0026.00 | R00.01.0026.00 | R00.01.0026.00 | R00.01.0026.00 | R00.01.0026.00 |
| 13B | Glass Door, Inner, Mirror, Left Hand | R00.01.0034.00 | R00.01.0034.00 | R00.01.0034.00 | R00.01.0034.00 | R00.01.0034.00 | R00.01.0034.00 | R00.01.0034.00 |
| 14A | Glass Door, Outer, Right Hand | R00.01.0025.00 | R00.01.0025.00 | R00.01.0025.00 | R00.01.0025.00 | R00.01.0025.00 | R00.01.0025.00 | R00.01.0025.00 |
| 14B | Glass Door, Outer, Mirror, Right Hand | R00.01.0033.00 | R00.01.0033.00 | R00.01.0033.00 | R00.01.0033.00 | R00.01.0033.00 | R00.01.0033.00 | R00.01.0033.00 |
| 15 | Hinge Kit | --- | --- | --- | --- | --- | --- | --- |
| 16 | Relay | 02.01.088.00 | 02.01.088.00 | 02.01.088.00 | 02.01.080.00 | 02.01.105.00 | 02.01.080.00 | 02.01.105.00 |
| 17 | Infinite Control Switch (Qty. 2) | R02.19.160.00 | R02.19.018.00 | R02.19.018.00 | R02.19.019.00 | R02.19.019.00 | R02.19.019.00 | R02.19.019.00 |
| 18 | On/Off Switch | R02.19.016.00 | R02.19.016.00 | R02.19.016.00 | R02.19.008A.00 | R02.19.008A.00 | R02.19.008A.00 | R02.19.008A.00 |
| 19 | Rubber Boot, Toggle Switch | --- | --- | --- | --- | --- | 02.20.040.00 | 02.20.040.00 |
| 20 | Indicator Light, Red (Qty. 2) | 02.19.154.00 | 02.19.154.00 | 02.19.154.00 | 02.19.151.00 | 02.19.151.00 | --- | --- |
| | Indicator Light, Yellow | --- | --- | --- | --- | --- | 02.19.152.00 | 02.19.152.00 |
| 21 | Indicator Light, Green | 02.19.155.00 | 02.19.155.00 | 02.19.155.00 | 02.19.150.00 | 02.19.150.00 | 02.19.150.00 | 02.19.150.00 |
| 22 | High Limit, Automatic | R02.16.036.00 | R02.16.036.00 | R02.16.036.00 | R02.16.036.00 | R02.16.036.00 | R02.16.036.00 | R02.16.036.00 |
| | High Limit, Manual * | 02.16.071.00 | 02.16.071.00 | 02.16.071.00 | 02.16.071.00 | 02.16.071.00 | 02.16.071.00 | 02.16.071.00 |
| 23 | Strain Relief | 02.20.206.00 | 02.20.206.00 | 02.20.206.00 | 02.20.212.00 | 02.20.212.00 | 02.20.212.00 | 02.20.212.00 |
| 24 | Terminal Block, 3-Pole * | --- | --- | --- | --- | --- | R02.15.030.00 | R02.15.030.00 |
| 25 | Power Cord w/ Plug | R02.18.030.00 | R02.18.030.00 | R02.18.030.00 | 02.18.077.00 | 02.18.066.00 | 02.18.077.00 | 02.18.066.00 |
| 26 | Heating Element, Base (Qty. 2) | 02.05.507.00 | 02.05.293.00 | 02.05.293.00 | 02.05.294.00 | 02.05.294.00 | 02.05.294.00 | 02.05.294.00 |
| 27 | Pan Rail | --- | --- | --- | --- | --- | --- | --- |
| 28 | Rubber Foot, Pan Rail | --- | --- | --- | --- | --- | --- | --- |
| 29 | Pan Divider (optional) | 04.22.400.00 | 04.22.400.00 | 04.22.400.00 | 04.22.400.00 | 04.22.400.00 | 04.22.400.00 | 04.22.400.00 |
| 30 | Pan Enclosure, 2 Pan (optional) | 04.22.406.00 | 04.22.406.00 | 04.22.406.00 | 04.22.406.00 | 04.22.406.00 | 04.22.406.00 | 04.22.406.00 |
| | Pan Enclosure, 1 Pan * | --- | --- | --- | --- | --- | --- | --- |
| 31 | Water Trough | 04.22.403.00 | 04.22.403.00 | 04.22.403.00 | 04.22.403.00 | 04.22.403.00 | 04.22.403.00 | 04.22.403.00 |
| 32 | Heating Element, Water | 02.05.508.00 | 02.05.295.00 | 02.05.295.00 | 02.05.296.00 | 02.05.296.00 | 02.05.296.00 | 02.05.296.00 |
| | Electrical Drawing | HS2-5825 | HS2-3544 | HS2-3544 | HS2-3546 | HS2-3548 | HS2-4163 | HS2-4164 |

The shaded areas contain part information for International models only. * Not Shown.



PARTS SPECIFIC TO MODEL GRCDH-2PD

| Item Description | 100V Part Number | 120V Part Number | 120V CSA Part Number | 220V Part Number | 240V Part Number | 220-230 V (CE) Part Number | 230-240 V (CE) Part Number |
|---|---------------------|---------------------|-------------------------|---------------------|---------------------|-------------------------------|-------------------------------|
| 8 Curved Glass, Front | --- | R04.40.095.00 | R04.40.095.00 | R04.40.095.00 | R04.40.095.00 | R04.40.095.00 | R04.40.095.00 |
| 9 End Glass (Qty. 2) | --- | 04.40.091.00 | 04.40.091.00 | 04.40.091.00 | 04.40.091.00 | 04.40.091.00 | 04.40.091.00 |
| 10 Light Bulb (Qty. 6) | --- | 02.30.043.00 | 02.30.043.00 | 02.30.058.00 | 02.30.058.00 | 02.30.058.00 | 02.30.058.00 |
| 11 Heating Element, Upper (Qty. 3) | --- | R02.08.222.00 | R02.08.222.00 | R02.08.232.00 | R02.08.232.00 | R02.08.232.00 | R02.08.232.00 |
| 12 Wire Guard (Qty. 6) | --- | 04.37.100.00 | 04.37.100.00 | 04.37.100.00 | 04.37.100.00 | 04.37.100.00 | 04.37.100.00 |
| 13A Glass Door, Inner, Left Hand | --- | R00.01.0030.00 | R00.01.0030.00 | R00.01.0030.00 | R00.01.0030.00 | R00.01.0030.00 | R00.01.0030.00 |
| 13B Glass Door, Inner, Mirror, Left Hand | --- | R00.01.0038.00 | R00.01.0038.00 | R00.01.0038.00 | R00.01.0038.00 | R00.01.0038.00 | R00.01.0038.00 |
| 14A Glass Door, Outer, Right Hand | --- | R00.01.0029.00 | R00.01.0029.00 | R00.01.0029.00 | R00.01.0029.00 | R00.01.0029.00 | R00.01.0029.00 |
| 14B Glass Door, Outer, Mirror, Right Hand | --- | R00.01.0037.00 | R00.01.0037.00 | R00.01.0037.00 | R00.01.0037.00 | R00.01.0037.00 | R00.01.0037.00 |
| 15 Hinge Kit | --- | --- | --- | --- | --- | --- | --- |
| 16 Relay | --- | 02.01.088.00 | 02.01.088.00 | 02.01.180.00 | 02.01.105.00 | 02.01.180.00 | 02.01.105.00 |
| 17 Infinite Control Switch (Qty. 3) | --- | R02.19.018.00 | R02.19.018.00 | R02.19.019.00 | R02.19.019.00 | R02.19.019.00 | R02.19.019.00 |
| 18 On/Off Switch | --- | R02.19.016.00 | R02.19.016.00 | R02.19.006.00 | R02.19.006.00 | R02.19.006.00 | R02.19.006.00 |
| 19 Rubber Boot, Toggle Switch | --- | --- | --- | --- | --- | 02.20.040.00 | 02.20.040.00 |
| 20 Indicator Light, Red | --- | 02.19.154.00 | 02.19.154.00 | 02.19.151.00 | 02.19.151.00 | --- | --- |
| Indicator Light, Yellow | --- | --- | --- | --- | --- | --- | --- |
| 21 Indicator Light, Green | --- | 02.19.155.00 | 02.19.155.00 | 02.19.150.00 | 02.19.150.00 | 02.19.150.00 | 02.19.150.00 |
| 22 High Limit, Automatic | --- | R02.16.036.00 | R02.16.036.00 | R02.16.036.00 | R02.16.036.00 | R02.16.036.00 | R02.16.036.00 |
| High Limit, Manual * | --- | 02.16.071.00 | 02.16.071.00 | 02.16.071.00 | 02.16.071.00 | 02.16.071.00 | 02.16.071.00 |
| 23 Strain Relief | --- | 02.20.206.00 | 02.20.212.00 | 02.20.212.00 | 02.20.212.00 | 02.20.212.00 | 02.20.212.00 |
| 24 Terminal Block, 3-Pole * | --- | --- | --- | --- | --- | R02.15.030.00 | R02.15.030.00 |
| 25 Power Cord w/ Plug | --- | R02.18.030.00 | R02.18.083.00 | 02.18.077.00 | 02.18.068.00 | 02.18.077.00 | 02.18.068.00 |
| 26 Heating Element, Base (Qty. 2) | --- | 02.05.293.00 | 02.05.293.00 | 02.05.294.00 | 02.05.294.00 | 02.05.294.00 | 02.05.294.00 |
| 27 Pan Rail | --- | --- | --- | --- | --- | --- | --- |
| 28 Rubber Foot, Pan Rail (Qty. 12) | --- | --- | --- | --- | --- | --- | --- |
| 29 Pan Divider (optional) | --- | 04.22.400.00 | 04.22.400.00 | 04.22.400.00 | 04.22.400.00 | 04.22.400.00 | 04.22.400.00 |
| 30 Pan Enclosure, 2 Pan (optional) | --- | 04.22.406.00 | 04.22.406.00 | 04.22.406.00 | 04.22.406.00 | 04.22.406.00 | 04.22.406.00 |
| Pan Enclosure, 1 Pan * | --- | --- | --- | --- | --- | --- | --- |
| 31 Water Trough | --- | 04.22.403.00 | 04.22.403.00 | 04.22.403.00 | 04.22.403.00 | 04.22.403.00 | 04.22.403.00 |
| 32 Heating Element, Water | --- | 02.05.295.00 | 02.05.295.00 | 02.05.296.00 | 02.05.296.00 | 02.05.296.00 | 02.05.296.00 |
| Electrical Drawing | --- | HS2-3313 | HS2-3313 | HS2-3419 | HS2-3421 | HS2-4171 | HS2-4172 |

The shaded areas contain part information for International models only. * Not Shown.



PARTS SPECIFIC TO MODEL GRCD-3P

| Item Description | 100V Part Number | 120V Part Number | 120V CSA Part Number | 220V Part Number | 240V Part Number | 220-230 V (CE) Part Number | 230-240 V (CE) Part Number |
|---|------------------|------------------|----------------------|------------------|------------------|----------------------------|----------------------------|
| 8 Curved Glass, Front | --- | R04.40.107.00 | R04.40.107.00 | R04.40.107.00 | R04.40.107.00 | R04.40.107.00 | R04.40.107.00 |
| 9 End Glass (Qty. 2) | --- | 04.40.105.00 | 04.40.105.00 | 04.40.105.00 | 04.40.105.00 | 04.40.105.00 | 04.40.105.00 |
| 10 Light Bulb (Qty. 3) | --- | 02.30.043.00 | 02.30.043.00 | 02.30.058.00 | 02.30.058.00 | 02.30.058.00 | 02.30.058.00 |
| 11 Heating Element, Upper | --- | R02.08.216.00 | R02.08.216.00 | R02.08.253.00 | R02.08.254.00 | R02.08.253.00 | R02.08.254.00 |
| 12 Wire Guard (Qty. 3) | --- | 04.37.100.00 | 04.37.100.00 | 04.37.100.00 | 04.37.100.00 | 04.37.100.00 | 04.37.100.00 |
| 13A Glass Door, Inner, Left Hand | --- | R00.01.0028.00 | R00.01.0028.00 | R00.01.0028.00 | R00.01.0028.00 | R00.01.0028.00 | R00.01.0028.00 |
| 13B Glass Door, Inner, Mirror, Left Hand | --- | R00.01.0036.00 | R00.01.0036.00 | R00.01.0036.00 | R00.01.0036.00 | R00.01.0036.00 | R00.01.0036.00 |
| 14A Glass Door, Outer, Right Hand | --- | R00.01.0027.00 | R00.01.0027.00 | R00.01.0027.00 | R00.01.0027.00 | R00.01.0027.00 | R00.01.0027.00 |
| 14B Glass Door, Outer, Mirror, Right Hand | --- | R00.01.0035.00 | R00.01.0035.00 | R00.01.0035.00 | R00.01.0035.00 | R00.01.0035.00 | R00.01.0035.00 |
| 15 Hinge Kit | --- | --- | --- | --- | --- | --- | --- |
| 16 Relay | --- | --- | --- | --- | --- | --- | --- |
| 17 Infinite Control Switch | --- | R02.19.018.00 | R02.19.018.00 | R02.19.019.00 | R02.19.019.00 | R02.19.019.00 | R02.19.019.00 |
| 18 On/Off Switch | --- | R02.19.016.00 | R02.19.016.00 | R02.19.006.00 | R02.19.006.00 | R02.19.008A.00 | R02.19.008A.00 |
| 19 Rubber Boot, Toggle Switch | --- | --- | --- | --- | --- | 02.20.040.00 | 02.20.040.00 |
| 20 Indicator Light, Red | --- | 02.19.154.00 | 02.19.154.00 | 02.19.151.00 | 02.19.151.00 | --- | --- |
| 20 Indicator Light, Yellow | --- | --- | --- | --- | --- | --- | --- |
| 21 Indicator Light, Green | --- | --- | --- | --- | --- | 02.19.150.00 | 02.19.150.00 |
| 22 High Limit, Automatic | --- | --- | --- | --- | --- | --- | --- |
| 22 High Limit, Manual * | --- | --- | --- | --- | --- | --- | --- |
| 23 Strain Relief | --- | 02.20.206.00 | 02.20.206.00 | 02.20.212.00 | 02.20.212.00 | 02.20.212.00 | 02.20.212.00 |
| 24 Terminal Block, 3-Pole * | --- | --- | --- | --- | --- | R02.15.030.00 | R02.15.030.00 |
| 25 Power Cord w/ Plug | --- | R02.18.030.00 | R02.18.030.00 | 02.18.077.00 | 02.18.066.00 | 02.18.077.00 | 02.18.066.00 |
| 26 Heating Element, Base (Qty. 3) | --- | 02.05.293.00 | 02.05.293.00 | 02.05.294.00 | 02.05.294.00 | 02.05.294.00 | 02.05.294.00 |
| 27 Pan Rail | --- | 04.22.031.00 | 04.22.031.00 | 04.22.031.00 | 04.22.031.00 | 04.22.031.00 | 04.22.031.00 |
| 28 Rubber Foot, Pan Rail (Qty. 16) | --- | 05.06.039.00 | 05.06.039.00 | 05.06.039.00 | 05.06.039.00 | 05.06.039.00 | 05.06.039.00 |
| 29 Pan Divider (optional) | --- | 04.22.400.00 | 04.22.400.00 | 04.22.400.00 | 04.22.400.00 | 04.22.400.00 | 04.22.400.00 |
| 30 Pan Enclosure, 2 Pan (optional) | --- | 04.22.406.00 | 04.22.406.00 | 04.22.406.00 | 04.22.406.00 | 04.22.406.00 | 04.22.406.00 |
| 30 Pan Enclosure, 1 Pan * | --- | 04.22.407.00 | 04.22.407.00 | 04.22.407.00 | 04.22.407.00 | 04.22.407.00 | 04.22.407.00 |
| 31 Water Trough | --- | --- | --- | --- | --- | --- | --- |
| 32 Heating Element, Water | --- | --- | --- | --- | --- | --- | --- |
| Electrical Drawing | --- | HS2-3539 | HS2-3539 | HS2-3541 | HS2-3543 | HS2-4161 | HS2-4162 |

The shaded areas contain part information for International models only. * Not Shown.



PARTS SPECIFIC TO MODEL GRCD-3PD

| Item | Description | 100V Part Number | 120V Part Number | 120V CSA Part Number | 220V Part Number | 240V Part Number | 220-230 V (CE) Part Number | 230-240 V (CE) Part Number |
|------|---------------------------------------|---------------------|---------------------|-------------------------|---------------------|---------------------|-------------------------------|-------------------------------|
| 8 | Curved Glass, Front | --- | R04.40.096.00 | R04.40.096.00 | R04.40.096.00 | R04.40.096.00 | R04.40.096.00 | R04.40.096.00 |
| 9 | End Glass | --- | 04.40.091.00 | 04.40.091.00 | 04.40.091.00 | 04.40.091.00 | 04.40.091.00 | 04.40.091.00 |
| 10 | Light Bulb (Qty. 6) | --- | 02.30.043.00 | 02.30.043.00 | 02.30.058.00 | 02.30.058.00 | 02.30.058.00 | 02.30.058.00 |
| 11 | Heating Element, Upper (Qty. 3) | --- | R02.08.217.00 | R02.08.217.00 | R02.08.265.00 | R02.08.265.00 | R02.08.265.00 | R02.08.265.00 |
| 12 | Wire Guard (Qty. 9) | --- | 04.37.100.00 | 04.37.100.00 | 04.37.100.00 | 04.37.100.00 | 04.37.100.00 | 04.37.100.00 |
| 13A | Glass Door, Inner, Left Hand | --- | R00.01.0032.00 | R00.01.0032.00 | R00.01.0032.00 | R00.01.0032.00 | R00.01.0032.00 | R00.01.0032.00 |
| 13B | Glass Door, Inner, Mirror, Left Hand | --- | R00.01.0039.00 | R00.01.0039.00 | R00.01.0039.00 | R00.01.0039.00 | R00.01.0039.00 | R00.01.0039.00 |
| 14A | Glass Door, Outer, Right Hand | --- | R00.01.0031.00 | R00.01.0031.00 | R00.01.0031.00 | R00.01.0031.00 | R00.01.0031.00 | R00.01.0031.00 |
| 14B | Glass Door, Outer, Mirror, Right Hand | --- | R00.01.0040.00 | R00.01.0040.00 | R00.01.0040.00 | R00.01.0040.00 | R00.01.0040.00 | R00.01.0040.00 |
| 15 | Hinge Kit | --- | --- | --- | --- | --- | --- | --- |
| 16 | Relay | --- | --- | --- | --- | --- | --- | --- |
| 17 | Infinite Control Switch (Qty. 2) | --- | R02.19.018.00 | R02.19.018.00 | R02.19.019.00 | R02.19.019.00 | R02.19.019.00 | R02.19.019.00 |
| 18 | On/Off Switch | --- | R02.19.016.00 | R02.19.016.00 | R02.19.006.00 | R02.19.006.00 | R02.19.006.00 | R02.19.006.00 |
| 19 | Rubber Boot, Toggle Switch | --- | --- | --- | --- | --- | 02.20.040.00 | 02.20.040.00 |
| 20 | Indicator Light, Red | --- | 02.19.154.00 | 02.19.154.00 | 02.19.151.00 | 02.19.151.00 | --- | --- |
| 20 | Indicator Light, Yellow | --- | --- | --- | --- | --- | --- | --- |
| 21 | Indicator Light, Green | --- | --- | --- | --- | --- | 02.19.150.00 | 02.19.150.00 |
| 22 | High Limit, Automatic | --- | --- | --- | --- | --- | --- | --- |
| 22 | High Limit, Manual * | --- | --- | --- | --- | --- | --- | --- |
| 23 | Strain Relief | --- | 02.20.206.00 | 02.20.212.00 | 02.20.212.00 | 02.20.212.00 | 02.20.212.00 | 02.20.212.00 |
| 24 | Terminal Block, 3-Pole * | --- | --- | --- | --- | --- | R02.15.030.00 | R02.15.030.00 |
| 25 | Power Cord w/ Plug | --- | R02.18.030.00 | R02.18.030.00 | 02.18.077.00 | 02.18.068.00 | 02.18.077.00 | 02.18.068.00 |
| 26 | Heating Element, Base (Qty. 2) | --- | 02.05.293.00 | 02.05.293.00 | 02.05.294.00 | 02.05.294.00 | 02.05.294.00 | 02.05.294.00 |
| 27 | Pan Rail | --- | 04.22.031.00 | 04.22.031.00 | 04.22.031.00 | 04.22.031.00 | 04.22.031.00 | 04.22.031.00 |
| 28 | Rubber Foot, Pan Rail (Qty. 16) | --- | 05.06.039.00 | 05.06.039.00 | 05.06.039.00 | 05.06.039.00 | 05.06.039.00 | 05.06.039.00 |
| 29 | Pan Divider (optional) | --- | 04.22.400.00 | 04.22.400.00 | 04.22.400.00 | 04.22.400.00 | 04.22.400.00 | 04.22.400.00 |
| 30 | Pan Enclosure, 2 Pan (optional) | --- | 04.22.406.00 | 04.22.406.00 | 04.22.406.00 | 04.22.406.00 | 04.22.406.00 | 04.22.406.00 |
| 30 | Pan Enclosure, 1 Pan * | --- | 04.22.407.00 | 04.22.407.00 | 04.22.407.00 | 04.22.407.00 | 04.22.407.00 | 04.22.407.00 |
| 31 | Water Trough | --- | --- | --- | --- | --- | --- | --- |
| 32 | Heating Element, Water | --- | --- | --- | --- | --- | --- | --- |
| | Electrical Drawing | --- | HS2-3312 | HS2-3312 | HS2-3423 | HS2-3425 | HS2-4169 | HS2-4170 |

The shaded areas contain part information for International models only. * Not Shown.



PARTS SPECIFIC TO MODEL GRCDH-3P

| Item | Description | 100V Part Number | 120V Part Number | 120V CSA Part Number | 220V Part Number | 240V Part Number | 220-230 V (CE) Part Number | 230-240 V (CE) Part Number |
|------|---------------------------------------|---------------------|---------------------|-------------------------|---------------------|---------------------|-------------------------------|-------------------------------|
| 8 | Curved Glass, Front | R04.40.107.00 | R04.40.107.00 | R04.40.107.00 | R04.40.107.00 | R04.40.107.00 | R04.40.107.00 | R04.40.107.00 |
| 9 | End Glass (Qty. 2) | 04.40.105.00 | 04.40.105.00 | 04.40.105.00 | 04.40.105.00 | 04.40.105.00 | 04.40.105.00 | 04.40.105.00 |
| 10 | Light Bulb (Qty. 3) | 02.30.043.00 | 02.30.043.00 | 02.30.043.00 | 02.30.058.00 | 02.30.058.00 | 02.30.058.00 | 02.30.058.00 |
| 11 | Heating Element, Upper | R02.08.567.00 | R02.08.216.00 | R02.08.216.00 | R02.08.253.00 | R02.08.254.00 | R02.08.253.00 | R02.08.254.00 |
| 12 | Wire Guard (Qty. 3) | 04.37.100.00 | 04.37.100.00 | 04.37.100.00 | 04.37.100.00 | 04.37.100.00 | 04.37.100.00 | 04.37.100.00 |
| 13A | Glass Door, Inner, Left Hand | R00.01.0028.00 | R00.01.0028.00 | R00.01.0028.00 | R00.01.0028.00 | R00.01.0028.00 | R00.01.0028.00 | R00.01.0028.00 |
| 13B | Glass Door, Inner, Mirror, Left Hand | R00.01.0036.00 | R00.01.0036.00 | R00.01.0036.00 | R00.01.0036.00 | R00.01.0036.00 | R00.01.0036.00 | R00.01.0036.00 |
| 14A | Glass Door, Outer, Right Hand | R00.01.0027.00 | R00.01.0027.00 | R00.01.0027.00 | R00.01.0027.00 | R00.01.0027.00 | R00.01.0027.00 | R00.01.0027.00 |
| 14B | Glass Door, Outer, Mirror, Right Hand | R00.01.0035.00 | R00.01.0035.00 | R00.01.0035.00 | R00.01.0035.00 | R00.01.0035.00 | R00.01.0035.00 | R00.01.0035.00 |
| 15 | Hinge Kit | --- | --- | --- | --- | --- | --- | --- |
| 16 | Relay | 02.01.088.00 | 02.01.088.00 | 02.01.088.00 | 02.01.080.00 | 02.01.105.00 | 02.01.080.00 | 02.01.105.00 |
| 17 | Infinite Control Switch (Qty. 2) | R02.19.160.00 | R02.19.018.00 | R02.19.018.00 | R02.19.019.00 | R02.19.019.00 | R02.19.019.00 | R02.19.019.00 |
| 18 | On/Off Switch | R02.19.016.00 | R02.19.016.00 | R02.19.016.00 | R02.19.008A.00 | R02.19.008A.00 | R02.19.008A.00 | R02.19.008A.00 |
| 19 | Rubber Boot, Toggle Switch | --- | --- | --- | --- | --- | 02.20.040.00 | 02.20.040.00 |
| 20 | Indicator Light, Red (Qty. 2) | 02.19.154.00 | 02.19.154.00 | 02.19.154.00 | 02.19.151.00 | 02.19.151.00 | --- | --- |
| | Indicator Light, Yellow | --- | --- | --- | --- | --- | 02.19.152.00 | 02.19.152.00 |
| 21 | Indicator Light, Green | 02.19.155.00 | 02.19.155.00 | 02.19.155.00 | 02.19.150.00 | 02.19.150.00 | 02.19.150.00 | 02.19.150.00 |
| 22 | High Limit, Automatic | R02.16.036.00 | R02.16.036.00 | R02.16.036.00 | R02.16.036.00 | R02.16.036.00 | R02.16.036.00 | R02.16.036.00 |
| | High Limit, Manual * | 02.16.071.00 | 02.16.071.00 | 02.16.071.00 | 02.16.071.00 | 02.16.071.00 | 02.16.071.00 | 02.16.071.00 |
| 23 | Strain Relief | 02.20.206.00 | 02.20.206.00 | 02.20.206.00 | 02.20.212.00 | 02.20.212.00 | 02.20.212.00 | 02.20.212.00 |
| 24 | Terminal Block, 3-Pole * | --- | --- | --- | --- | --- | R02.15.030.00 | R02.15.030.00 |
| 25 | Power Cord w/ Plug | R02.18.030.00 | R02.18.030.00 | R02.18.030.00 | 02.18.077.00 | 02.18.066.00 | 02.18.077.00 | 02.18.066.00 |
| 26 | Heating Element, Base (Qty. 3) | 02.05.507.00 | 02.05.293.00 | 02.05.293.00 | 02.05.294.00 | 02.05.294.00 | 02.05.294.00 | 02.05.294.00 |
| 27 | Pan Rail | --- | --- | --- | --- | --- | --- | --- |
| 28 | Rubber Foot, Pan Rail | --- | --- | --- | --- | --- | --- | --- |
| 29 | Pan Divider (optional) | 04.22.400.00 | 04.22.400.00 | 04.22.400.00 | 04.22.400.00 | 04.22.400.00 | 04.22.400.00 | 04.22.400.00 |
| 30 | Pan Enclosure, 2 Pan (optional) | 04.22.406.00 | 04.22.406.00 | 04.22.406.00 | 04.22.406.00 | 04.22.406.00 | 04.22.406.00 | 04.22.406.00 |
| | Pan Enclosure, 1 Pan * | 04.22.407.00 | 04.22.407.00 | 04.22.407.00 | 04.22.407.00 | 04.22.407.00 | 04.22.407.00 | 04.22.407.00 |
| 31 | Water Trough | 04.22.403.00 | 04.22.403.00 | 04.22.403.00 | 04.22.403.00 | 04.22.403.00 | 04.22.403.00 | 04.22.403.00 |
| 32 | Heating Element, Water | 02.05.508.00 | 02.05.295.00 | 02.05.295.00 | 02.05.296.00 | 02.05.296.00 | 02.05.296.00 | 02.05.296.00 |
| | Electrical Drawing | HS2-5850 | HS2-3545 | HS2-3545 | HS2-3547 | HS2-3549 | HS2-4165 | HS2-4166 |

The shaded areas contain part information for **International models only**. * Not Shown.



PARTS SPECIFIC TO MODEL GRCDH-3PD

| Item | Description | 100V Part Number | 120V Part Number | 120V CSA Part Number | 220V Part Number | 240V Part Number | 220-230 V (CE) Part Number | 230-240 V (CE) Part Number |
|------|---|---------------------|---------------------|-------------------------|---------------------|---------------------|-------------------------------|-------------------------------|
| 8 | Curved Glass, Front | --- | R04.40.096.00 | R04.40.096.00 | R04.40.096.00 | R04.40.096.00 | R04.40.096.00 | R04.40.096.00 |
| 9 | End Glass | --- | 04.40.091.00 | 04.40.091.00 | 04.40.091.00 | 04.40.091.00 | 04.40.091.00 | 04.40.091.00 |
| 10 | Light Bulb (Qty. 6) | --- | 02.30.043.00 | 02.30.043.00 | 02.30.058.00 | 02.30.058.00 | 02.30.058.00 | 02.30.058.00 |
| 11 | Heating Element, Upper (Qty. 3) | --- | R02.08.217.00 | R02.08.217.00 | R02.08.265.00 | R02.08.265.00 | R02.08.265.00 | R02.08.265.00 |
| 12 | Wire Guard (Qty. 9) | --- | 04.37.100.00 | 04.37.100.00 | 04.37.100.00 | 04.37.100.00 | 04.37.100.00 | 04.37.100.00 |
| 13A | Glass Door, Inner, Left Hand | --- | R00.01.0032.00 | R00.01.0032.00 | R00.01.0032.00 | R00.01.0032.00 | R00.01.0032.00 | R00.01.0032.00 |
| 13B | Glass Door, Inner, Mirror, Left Hand | --- | R00.01.0039.00 | R00.01.0039.00 | R00.01.0039.00 | R00.01.0039.00 | R00.01.0039.00 | R00.01.0039.00 |
| 14A | Glass Door, Outer, Right Hand | --- | R00.01.0031.00 | R00.01.0031.00 | R00.01.0031.00 | R00.01.0031.00 | R00.01.0031.00 | R00.01.0031.00 |
| 14B | Glass Door, Outer, Mirror, Right Hand | --- | R00.01.0040.00 | R00.01.0040.00 | R00.01.0040.00 | R00.01.0040.00 | R00.01.0040.00 | R00.01.0040.00 |
| 15 | Hinge Kit | --- | --- | --- | --- | --- | --- | --- |
| 16 | Relay | --- | 02.01.088.00 | 02.01.088.00 | 02.01.180.00 | 02.01.105.00 | 02.01.180.00 | 02.01.105.00 |
| 17 | Infinite Control Switch (Qty. 3) | --- | R02.19.018.00 | R02.19.018.00 | R02.19.019.00 | R02.19.019.00 | R02.19.019.00 | R02.19.019.00 |
| 18 | On/Off Switch | --- | R02.19.016.00 | R02.19.016.00 | R02.19.006.00 | R02.19.006.00 | R02.19.006.00 | R02.19.006.00 |
| 19 | Rubber Boot, Toggle Switch | --- | --- | --- | --- | --- | 02.20.040.00 | 02.20.040.00 |
| 20 | Indicator Light, Red | --- | 02.19.154.00 | 02.19.154.00 | 02.19.151.00 | 02.19.151.00 | --- | --- |
| | Indicator Light, Yellow | --- | --- | --- | --- | --- | --- | --- |
| 21 | Indicator Light, Green | --- | 02.19.155.00 | 02.19.155.00 | 02.19.150.00 | 02.19.150.00 | 02.19.150.00 | 02.19.150.00 |
| 22 | High Limit, Automatic | --- | R02.16.036.00 | R02.16.036.00 | R02.16.036.00 | R02.16.036.00 | R02.16.036.00 | R02.16.036.00 |
| | High Limit, Manual * | --- | 02.16.071.00 | 02.16.071.00 | 02.16.071.00 | 02.16.071.00 | 02.16.071.00 | 02.16.071.00 |
| 23 | Strain Relief | --- | 02.20.212.00 | 02.20.209.00 | 02.20.212.00 | 02.20.212.00 | 02.20.212.00 | 02.20.212.00 |
| 24 | Terminal Block, 3-Pole * | --- | --- | --- | --- | --- | R02.15.030.00 | R02.15.030.00 |
| 25 | Power Cord w/ Plug | --- | R02.18.083.00 | R02.18.039.00 | 02.18.077.00 | 02.18.068.00 | 02.18.077.00 | 02.18.068.00 |
| 26 | Heating Element, Base (Qty. 3) | --- | 02.05.293.00 | 02.05.293.00 | 02.05.294.00 | 02.05.294.00 | 02.05.294.00 | 02.05.294.00 |
| 27 | Pan Rail | --- | --- | --- | --- | --- | --- | --- |
| 28 | Rubber Foot, Pan Rail (Qty. 16) | --- | --- | --- | --- | --- | --- | --- |
| 29 | Pan Divider (optional) | --- | 04.22.400.00 | 04.22.400.00 | 04.22.400.00 | 04.22.400.00 | 04.22.400.00 | 04.22.400.00 |
| 30 | Pan Enclosure, 2 Pan (optional) | --- | 04.22.406.00 | 04.22.406.00 | 04.22.406.00 | 04.22.406.00 | 04.22.406.00 | 04.22.406.00 |
| | Pan Enclosure, 1 Pan * | --- | 04.22.407.00 | 04.22.407.00 | 04.22.407.00 | 04.22.407.00 | 04.22.407.00 | 04.22.407.00 |
| 31 | Water Trough | --- | 04.22.403.00 | 04.22.403.00 | 04.22.403.00 | 04.22.403.00 | 04.22.403.00 | 04.22.403.00 |
| 32 | Heating Element, Water Electrical Drawing | --- | 02.05.295.00 | 02.05.295.00 | 02.05.296.00 | 02.05.296.00 | 02.05.296.00 | 02.05.296.00 |
| | | --- | HS2-3311 | HS2-3311 | HS2-3424 | HS2-3426 | HS2-4173 | HS2-4174 |

The shaded areas contain part information for **International models only**. * Not Shown.





