



GLO-RAY®

Merchandising Warmer



GRCMW-1

Installation & Operating Manual & Replacement Parts List

I&W #07.05.185.00



This manual contains important safety information concerning the maintenance, use and operation of this product. Failure to follow the instructions contained in this manual may result in serious injury. If you're unable to understand the contents of this manual, please bring it to the attention of your supervisor. Do not operate this equipment unless you have read and understood the contents of this manual.

Este manual contiene importante información sobre seguridad concerniente al mantenimiento, uso y operación de este producto. Cualquier falla en el seguimiento de las instrucciones contenidas en este manual puede resultar en un serio daño. Si usted no puede entender el contenido de este manual por favor pregunte a su supervisor. No opere este equipo al menos que haya leído y comprendido el contenido de este manual.

IMPORTANT SAFETY INFORMATION

IMPORTANT! Read the following important safety information to avoid personal injury or death, and to avoid damage to the equipment or property.

⚠ WARNINGS

- ⚠ For safe and proper operation plug unit into a properly grounded electrical outlet of the correct voltage, size and plug configuration. If the plug and receptacle do not match, contact a qualified electrician to determine the proper voltage and size and install the proper electrical outlet.
- ⚠ To avoid any injury, turn the power switch OFF on the unit and unplug the unit from the power source and allow to cool completely before performing any maintenance or cleaning.
- ⚠ To avoid any injury or damage the unit must only be serviced by qualified personnel.
- ⚠ To avoid electrical shock or personal injury, do not steam clean or use excessive water on the unit.
- ⚠ To prevent any injury or damage to the unit do not pull unit by power cord.
- ⚠ To prevent any injury, discontinue use if power cord is frayed or worn and contact Authorized Service Agent to replace it.
- ⚠ Unit is not waterproof. DO NOT submerge in water. Do not operate if unit has been submerged in water to avoid injury.
- ⚠ For safe and proper operation, the unit must be located at least 1" (25 mm) from combustible walls and materials. If safe distances are not maintained, discoloration or combustion could occur.
- ⚠ Only light bulbs which meet or exceed NSF standards, specifically designed for food holding areas must be used. Breakage of light bulbs not specially coated could result in personal injury and/or food contamination.
- ⚠ Some exterior surfaces on the unit will get hot. Use caution when touching these areas to avoid injury.
- ⚠ If service is required on this unit, contact your Authorized Hatco Service Agent, or contact the Hatco Service Department at 800-558-0607 or 414-671-6350; fax 800-690-2966 or International fax 414-671-3976.
- ⚠ This product has no "user" serviceable parts. To avoid damage to the unit or injury to personnel, use only Authorized Hatco Service Agents and Genuine Hatco Parts when service is required.
- ⚠ Genuine Hatco Replacement Parts are specified to operate safely in the environments in which they are used. Some aftermarket or generic replacement parts do not have the characteristics that will allow them to operate safely in Hatco equipment. It is essential to use Hatco Replacement Parts when repairing Hatco equipment. Failure to use Hatco Replacement Parts may subject operators of the equipment to hazardous electrical voltage, resulting in electrical shock or burn.

⚠ CAUTIONS

- ⚠ Unit is not weatherproof. For safe and proper operation, locate the unit indoors where the ambient air temperature is constant and is a minimum of 70°F (21°C).
- ⚠ To avoid any injury or damage, locate the unit at the proper counter height, in an area that is convenient for use. The location should be level to prevent the unit or its contents from accidentally falling, and strong enough to support the weight of the unit and food displayed.
- ⚠ To avoid any injury or damage to the unit, do not move or relocate the unit for cleaning.
- ⚠ Standard and approved manufacturing may cause the unit to smoke up to 30 minutes during initial start-up. This is a temporary condition. To assure safe operation operate unit without food product until smoke dissipates.

IMPORTANT SAFETY INFORMATION

NOTICES

Use only non-abrasive cleaners. Abrasive cleaners could scratch the finish of your unit, marring its appearance and making it susceptible to dirt accumulation.

Do not lay unit on the side with the control panel or damage to unit could occur.

Do not drag or slide the unit when moving or installing. Carefully lift the unit to prevent the rubber feet from tearing off.

DO NOT use paper towel or glass cleaner to clean polycarbonate breath protector. Paper towel and glass cleaner may scratch the material. Wipe off breath protector using a soft, clean and damp cloth.

MODEL DESCRIPTION

GRCMW-1

The Hatco GRCMW-1 Merchandising Warmer is ideal for holding cinnamon rolls at customer serving points. The foil blanket base heat temperature is preset at the factory for ideal cinnamon roll warming temperatures. The lights and heating elements are controlled by the main switch making start up and shut down a one switch operation. The warmer's pan skirt, side glass panels, and back mirror glass panel are removable for easy cleaning.

Unit also features a polycarbonate breath protector, 1" (25 mm) adjustable legs, a lighted On/Off switch, halogen display lights and 6' (1829 mm) cord and plug set.

NOTE: Decorative Corian® trim pieces supplied and installed by others.

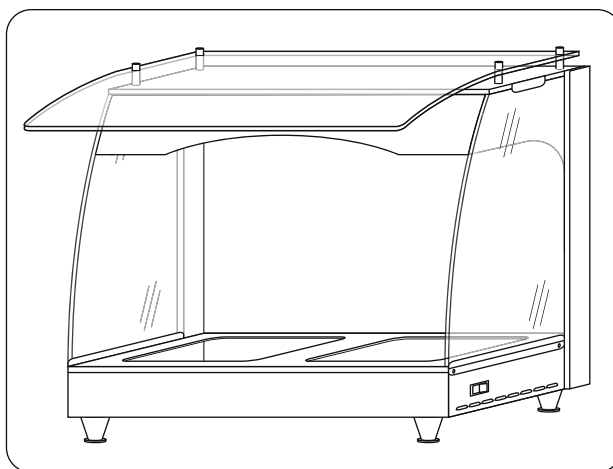


Figure 1. Glo-Ray Model GRCMW-1

MODEL DESIGNATION

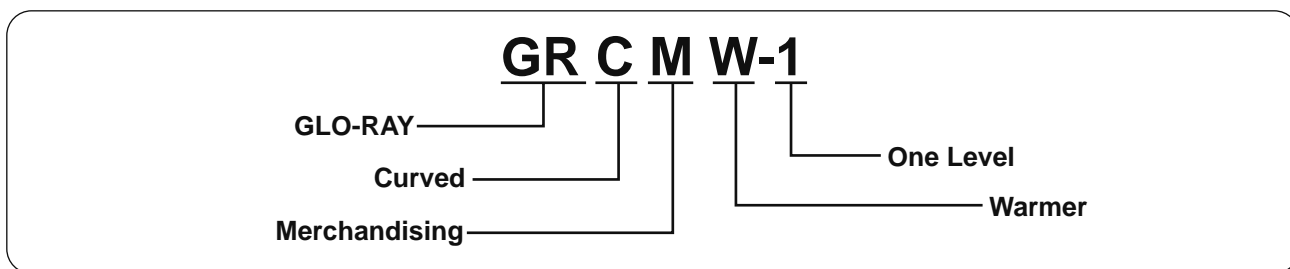


Figure 2. Model Designation

SPECIFICATIONS

PLUG CONFIGURATION

Units are supplied from the factory with an electrical cord and plug installed. Plugs are supplied according to the applications. (See Figure 3.)

WARNING

For safe and proper operation plug unit into a properly grounded electrical outlet of the correct voltage, size and plug configuration. If the plug and receptacle do not match, contact a qualified electrician to determine the proper voltage and size and install the proper electrical outlet.

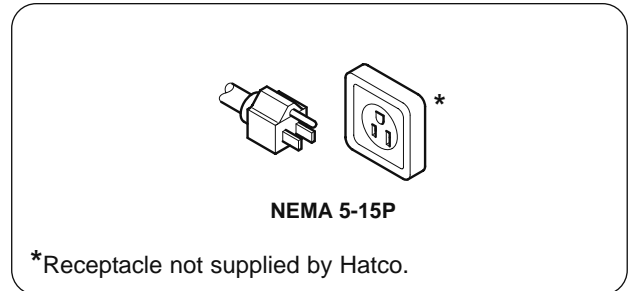


Figure 3. Plug Configuration

ELECTRICAL RATING CHART

Model	Voltage	Watts	Amps	Plug Configuration	Shipping Weight
GRCMW-1	120	670	5.6	NEMA 5-15P	52 lbs. (24 kg)

DIMENSIONS

Model	Width (A)	Depth (B)	Depth (C)	Height (D)
GRCMW-1	22-1/8" (mm)	14-7/8" (mm)	21-3/8" (mm)	19-3/4" (mm)

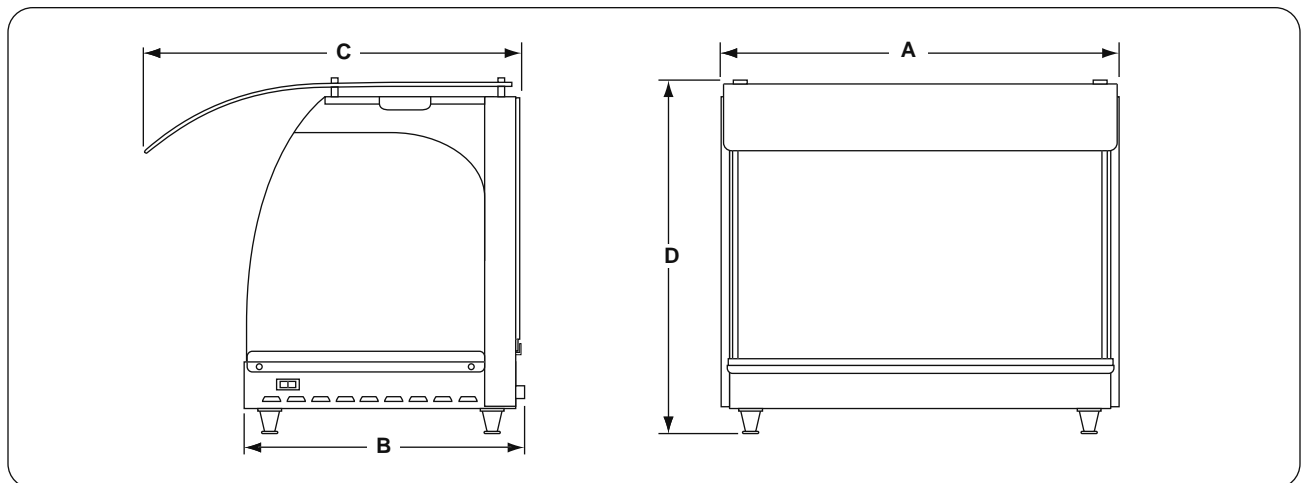


Figure 4. Dimensions Glo-Ray Model GRCMW-1

INSTALLATION

UNPACKING

The Glo-Ray® Merchandiser is shipped with most components pre-assembled. Care should be taken when unpacking shipping carton to avoid damage to unit and components enclosed.

WARNING

To prevent any injury or damage to the unit do not pull unit by power cord.

WARNING

To prevent any injury, discontinue use if power cord is frayed or worn and contact Authorized Service Agent to replace it.

1. Remove the unit from the carton.
2. Remove information packet. **To prevent delay in obtaining warranty coverage, fill out and mail the warranty card.**
3. Remove tape and protective packaging from all surfaces of unit.

NOTICE

Do not lay unit on the side with the control panel or damage to the unit could occur.

NOTICE

Do not drag or slide the unit when moving or installing. Carefully lift the unit to prevent the legs from being damaged.

LOCATION

NOTE: Unit must be transported in the upright position.

For proper operation and maximum performance, locate the unit in an area where the ambient air temperature is constant and is a minimum of 70°F (21°C). Areas which are susceptible to active air movements or currents should be avoided, i.e., near exhaust fans or hoods and air conditioning ducts.

CAUTION

Unit is not weatherproof. For safe and proper operation, locate the unit indoors where the ambient air temperature is constant and is a minimum of 70°F (21°C).

WARNING

For safe and proper operation, the unit must be located at least 1" (25 mm) from combustible walls and materials. If safe distances are not maintained, discoloration or combustion could occur.

CAUTION

To avoid any injury or damage, locate the unit at the proper counter height, in an area that is convenient for use. The location should be level to prevent the unit or its contents from accidentally falling, and strong enough to support the weight of the unit and food displayed.

INSTALLATION

ASSEMBLY

Position unit upright on the counter near the location it will be used. Installation of the following items is required before operating the unit:

- Qty. 2 - Side Glass Panel (P/N 04.40.289.00)
- Qty. 1 - Back Mirror Glass Panel (P/N 04.40.291.00)
- Qty. 1 - Pan Skirt (P/N 04.19.1272.00)
- Qty. 1 - Polycarbonate Breath Protector (P/N 04.12.325.00)

NOTE: Decorative Corian® pieces are not supplied or installed by Hatco.

Installing Back Mirror Glass Panel (See Figure 5)

1. Position the mirror glass panel with the mirror side of the glass facing the inside of the unit.
2. Very carefully guide and lower the mirror glass panel into the brackets located on the back of the unit.

Installing Side Glass Panel (See Figure 6)

1. Position the side glass with the curved edge facing the front of the unit.
2. Lift and tilt the top of the side glass up into the upper bracket, and carefully lower the bottom of the side glass into the lower bracket.
3. Repeat steps 1-2 for installing the other side glass panel.

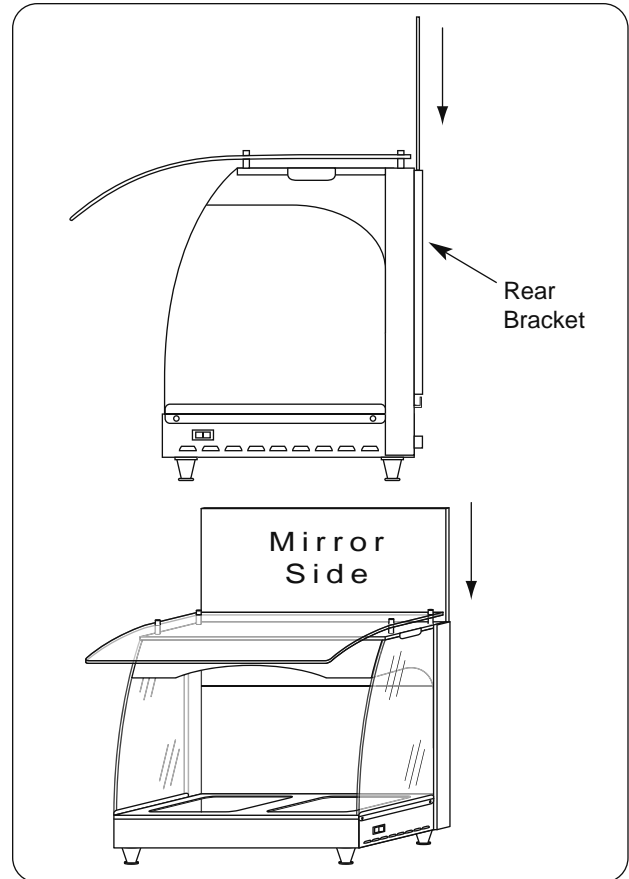


Figure 5. Installing Back Mirror Glass Panel

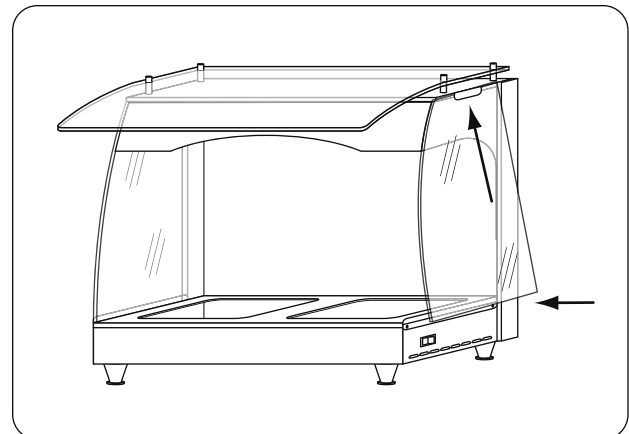


Figure 6. Installing Side Glass Panel

INSTALLATION

ASSEMBLY (CONTINUED)

Installing the Pan Skirt (See Figure 7)

Position the two holes on the pan skirt over the base pins located at the rear, inside of the unit.

Installing the Breath Protector (See Figure 8)

1. Remove protective paper from polycarbonate surfaces.
2. Remove four (4) thumbscrews and washers from top of unit.
3. Position breath protector on top of unit, matching holes in breath protector to the holes in the standoffs on top of the unit.
4. Place a washer (previously removed) in each breath protector hole.
5. Secure with thumbscrews - Do not over tighten.

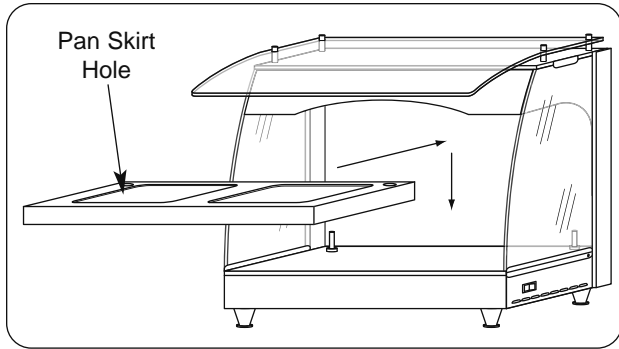


Figure 7. Installing Pan Skirt

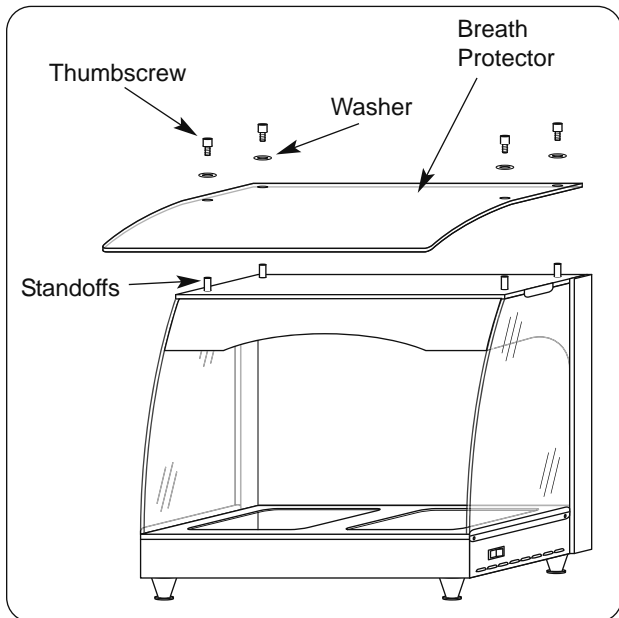


Figure 8. Installing Breath Protector

OPERATION

GENERAL

WARNING

Unit is not waterproof. **DO NOT** submerge in water. Do not operate if it has been submerged in water to avoid injury.

WARNING

Some exterior surfaces on the unit will get hot. Use caution when touching these areas to avoid injury.

CAUTION

Standard and approved manufacturing may cause the unit to smoke up to 30 minutes during initial start-up. This is a temporary condition. To assure safe operation operate unit without food product until smoke dissipates.

START-UP

1. Plug unit into a properly grounded electrical outlet of the correct voltage, size and plug configuration. See *SPECIFICATIONS* for details.
2. Place the On/Off rocker switch, located on the right side of the unit, in the ON position. (See Figure 9.) The halogen lights will glow at this time.

NOTE: Unit's thermostat is preset at the factory and is not adjustable.

3. Allow 15-20 minutes for the warmer to reach operating temperature.

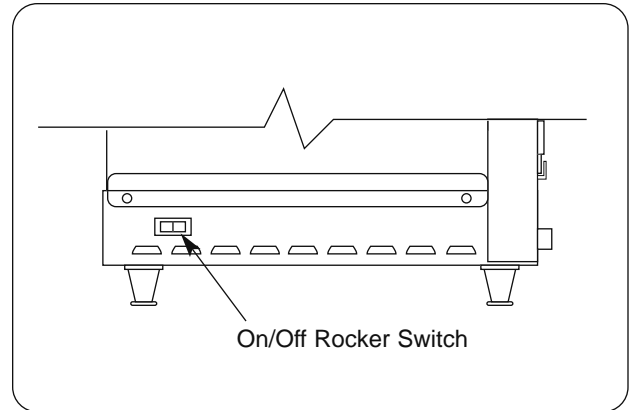


Figure 9. On/Off Rocker Switch

MAINTENANCE

CLEANING

The Hatco Glo-Ray® Merchandising Warmer is designed for maximum durability and performance, with minimum maintenance.

WARNING

To avoid any injury, turn the power switch OFF on the unit and unplug the unit from the power source and allow to cool completely before performing any maintenance or cleaning.

WARNING

Unit is not waterproof. DO NOT submerge in water. Do not operate if unit has been submerged in water to avoid injury.

WARNING

To avoid electrical shock or personal injury, do not steam clean or use excessive water on the unit.

CAUTION

To avoid any injury or damage to the unit, do not move or relocate the unit for cleaning.

To preserve the finish of the Glo-Ray Merchandising Warmer, the following is recommended:

- Metal surfaces to be wiped daily with a damp cloth. (Stubborn stains may be removed with a good non abrasive cleaner.)
- Hard to reach areas should be cleaned with a small brush and mild soap.
- The glass side and rear panels should be cleaned with ordinary glass cleaner and a damp soft cloth or paper towel.
- The polycarbonate breath protector should be cleaned with a mild, soapy water solution and a damp, soft cloth. Do not use paper towel.

NOTICE

DO NOT use paper towel or glass cleaner to clean polycarbonate breath protector. Paper towel and glass cleaner may scratch the material. Wipe off breath protector using a soft, clean and damp cloth.

NOTICE

Use only non-abrasive cleaners. Abrasive cleaners could scratch the finish of your unit, marring its appearance and making it susceptible to dirt accumulation.

Removing and Installing Back Mirror Glass Panel

Back mirror glass panel is removable for cleaning.

1. Carefully lift and slide the mirror panel up out of the rear brackets on the warmer.
2. Clean mirror.
3. Carefully guide and lower the mirror glass panel into the rear brackets. (See Figure 5.)

Removing and Installing Side Glass Panels

Side glass panels are removable for cleaning.

1. Lift side glass panel up and tilt outward from the bottom bracket.
2. Slide glass panel out away from unit.
3. Clean glass.
4. To install repeat steps 1-2 in reverse order. (See Figure 6.)

Removing and Installing Pan Skirt

1. Lift pan skirt up off of base pins and remove from warmer.
2. Clean shelf area and pan skirt.
3. To re-install, position the two holes on the pan skirt over the base pins located at the rear, inside of the unit. (See Figure 7.)

Removing and Installing Breath Protector

1. Remove four (4) thumbscrews and washers from top of unit.
2. Clean breath protector.
3. To re-install the breath protector, position it on top of unit, matching holes in breath protector to the holes in the standoffs on top of the unit. (See Figure 8.)
4. Place a washer (previously removed) in each breath protector hole.
5. Secure with thumbscrews - Do not over tighten.

MAINTENANCE

LIGHT BULB REPLACEMENT

The display lights are shatter-resistant, halogen light bulbs which illuminate the warming area. These bulbs have a special coating to guard against injury and food contamination in the event of breakage.

1. To replace a light bulb, disconnect the power supply from the unit and wait until the unit has cooled.
2. Light bulbs have a threaded base. Unscrew the light bulb from the unit and replace it with a new specially coated halogen light bulb.

NOTE: Hatco shatter-resistant light bulbs meet NSF standards for food holding and display areas. For 120 volt applications, use Hatco part number 02.30.081.00.

WARNING

Only light bulbs which meet or exceed NSF standards, specifically designed for food holding areas must be used. Breakage of light bulbs not specially coated could result in personal injury and/or food contamination.

WARNING

If service is required on this unit, contact your Authorized Hatco Service Agent, or contact the Hatco Service Department at 800-558-0607 or 414-671-6350; fax 800-690-2966 or International fax 414-671-3976.

WARNING

This product has no “user” serviceable parts. To avoid damage to the unit or injury to personnel, use only Authorized Hatco Service Agents and Genuine Hatco Parts when service is required.

WARNING

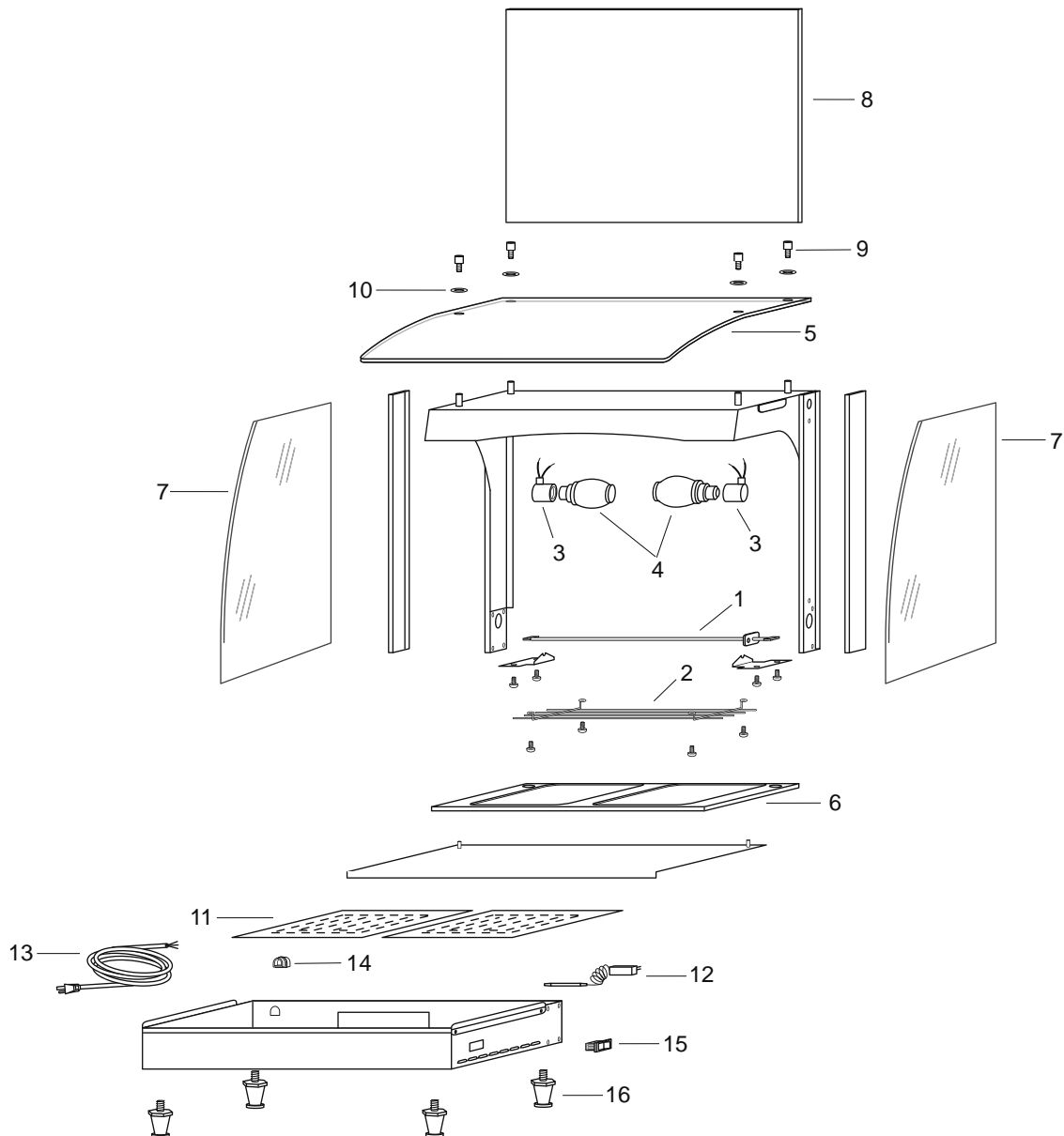
Genuine Hatco Replacement Parts are specified to operate safely in the environments in which they are used. Some aftermarket or generic replacement parts do not have the characteristics that will allow them to operate safely in Hatco equipment. It is essential to use Hatco Replacement Parts when repairing Hatco equipment. Failure to use Hatco Replacement Parts may subject operators of the equipment to hazardous electrical voltage, resulting in electrical shock or burn.

REPLACEMENT PARTS LIST

Hatco Glo-Ray® Merchandising Warmer GRCMW-1 Series

Model Designation

GRCMW-1	G = Glo
	R = Ray
	C = Curved
	M = Merchandising
	W = Warmer
	1 = One Level



24 Hour 7 Day Parts & Service Assistance available in the United States and Canada by calling (800) 558-0607.

⚠ CAUTION - Use of replacement parts other than those supplied by Hatco Corporation may result in damage to the unit or injury to personnel.

REPLACEMENT PARTS LIST

PARTS COMMON TO ALL GRMCW-1 MODELS - 120 Volt

ITEM	DESCRIPTION	PART NO.	QTY.
1	Heating Element, 350 Watt, Upper	R02.08.306D.00	1
2	Wire Guard	04.08.531.00	1
3	Lamp Socket with Leads	02.30.051.00	2
4	Lamp, Halogen, 60 Watt, Coated	02.30.081.00	2
5	Breath Protector with Hardware	R04.12.325.00	1
6	Pan Skirt	04.19.1272.00	1
7	Side Glass	04.40.289.00	2
8	Glass, Mirror Panel, Rear	04.40.291.00	1
9	Thumbscrew	05.04.219.00	4
10	Washer	05.11.051.00	4
11	Blanket Heater, 100 Watt, Base	02.05.640.00	2
12	Thermostat with Bulb, Internal	R02.16.039.00	1
13	Power Cord and Plug	R02.18.154.00	1
14	Cord Grip	02.20.330.00	1
15	On/Off Rocker Switch	02.19.080.00	1
16	Adjustable Leg, Plastic	05.30.081.00	4

TROUBLESHOOTING GUIDE

⚠ WARNING

To avoid any injury or damage the unit must only be serviced by qualified personnel.

⚠ WARNING

To avoid any injury, turn the power switch OFF on the unit and unplug the unit from the power source and allow to cool completely before performing any maintenance or cleaning.

⚠ WARNING

If service is required on this unit, contact your Authorized Hatco Service Agent, or contact the Hatco Service Department at 800-558-0607 or 414-671-6350; fax 800-690-2966 or International fax 414-671-3976.

⚠ WARNING

This product has no “user” serviceable parts. To avoid damage to the unit or injury to personnel, use only Authorized Hatco Service Agents and Genuine Hatco Parts when service is required.

SYMPTOM	PROBABLE CAUSE	CORRECTIVE ACTION
Light bulb not working.	Light bulb defective.	Replace light bulb. Use Hatco Part No. 02.30.081.00.
	Power turned OFF.	Turn unit ON.
Food warming area not hot enough.	Internal temperature control set too low.	Contact Authorized Service Agent or Hatco for assistance.
	Heating element(s) not working.	Contact Authorized Service Agent or Hatco for assistance.
	Internal temperature control not working properly.	Contact Authorized Service Agent or Hatco for assistance.
	Excessive air movement around warming unit.	Restart or redirect air movement (i.e. air conditioning duct or exhaust fan) away from unit.
Food warming area too hot.	Internal temperature control set too high.	Contact Authorized Service Agent or Hatco for assistance.
	Internal temperature control not working properly.	Contact Authorized Service Agent or Hatco for assistance.
No heat, but lights work.	Internal temperature control set too low.	Contact Authorized Service Agent or Hatco for assistance.
	Heating element(s) not working.	Contact Authorized Service Agent or Hatco for assistance.
	Internal temperature control not working properly.	Contact Authorized Service Agent or Hatco for assistance.
No heat and no lights.	Unit turned OFF.	Turn unit ON.
	Circuit breaker tripped.	Reset circuit breaker. If circuit breaker continues to trip contact Authorized Service Agent or Hatco for assistance.

HATCO LIMITED WARRANTY

1. PRODUCT WARRANTY

Hatco warrants the products that it manufactures (the "Products") to be free from defects in materials and workmanship, under normal use and service, for a period of one (1) year from the date of purchase when installed and maintained in accordance with Hatco's written instructions or 18 months from the date of shipment from Hatco. Buyer must establish the product's purchase date by returning Hatco's Warranty Registration Card or by other means satisfactory to Hatco in its sole discretion.

Hatco warrants the following Product components to be free from defects in materials and workmanship from the date of purchase (subject to the foregoing conditions) for the period(s) of time and on the conditions listed below:

a) One (1) Year Parts and Labor PLUS One (1) Additional Year Parts-Only Warranty:

Toaster Elements (metal sheathed)
Drawer Warmer Elements (metal sheathed)
Drawer Warmer Drawer Rollers and Slides
Food Warmer Elements (metal sheathed)
Display Warmer Elements (metal sheathed air heating)
Holding Cabinet Elements (metal sheathed air heating)
Built-In Heated Well Elements (metal sheathed)

b) One (1) Year Parts and Labor PLUS Four (4) Years Parts-Only Warranty on pro-rated terms that Hatco will explain at Buyer's request:

3CS and FR Tanks

c) One (1) Year Parts and Labor PLUS Nine (9) Years Parts-Only Warranty on:

Electric Booster Heater Tanks
Gas Booster Heater Tanks

THE FOREGOING WARRANTIES ARE EXCLUSIVE AND IN LIEU OF ANY OTHER WARRANTY, EXPRESSED OR IMPLIED, INCLUDING BUT NOT LIMITED TO ANY IMPLIED WARRANTY OF MERCHANTABILITY OR FITNESS FOR A PARTICULAR PURPOSE OR PATENT OR OTHER INTELLECTUAL PROPERTY RIGHT INFRINGEMENT. Without limiting the generality of the foregoing, SUCH WARRANTIES DO NOT COVER: Coated incandescent light bulbs, fluorescent lights, lamp warmer heat bulbs, glass components, Product failure in booster tank, fin tube heat exchanger, or other water heating equipment, caused by liming, sediment buildup, chemical attack or freezing, Product misuse, tampering or misapplication, improper installation, or application of improper voltage.

2. LIMITATION OF REMEDIES AND DAMAGES

Hatco's liability and Buyer's exclusive remedy hereunder will be limited solely, at Hatco's option, to repair or replacement by a Hatco-authorized service agency (other than where Buyer is located outside of the United States, Canada, United Kingdom or Australia in which case Hatco's liability and Buyer's exclusive remedy hereunder will be limited solely to replacement of part under warranty) with respect to any claim made within the applicable warranty period referred to above. Hatco reserves the right to accept or reject any such claim in whole or in part. Hatco will not accept the return of any Product without prior written approval from Hatco, and all such approved returns shall be made at Buyer's sole expense. HATCO WILL NOT BE LIABLE, UNDER ANY CIRCUMSTANCES, FOR CONSEQUENTIAL OR INCIDENTAL DAMAGES, INCLUDING BUT NOT LIMITED TO LABOR COSTS OR LOST PROFITS RESULTING FROM THE USE OF OR INABILITY TO USE THE PRODUCTS OR FROM THE PRODUCTS BEING INCORPORATED IN OR BECOMING A COMPONENT OF ANY OTHER PRODUCT OR GOODS.

HATCO AUTHORIZED PARTS DISTRIBUTORS

ALABAMA

Jones McLeod Appl. Svc.
Birmingham 205-251-0159

ARIZONA

Auth. Comm. Food Equip.
Phoenix 602-234-2443
Byassee Equipment Co.
Phoenix 602-252-0402

CALIFORNIA

Industrial Electric
Commercial Parts & Service, Inc.
Huntington Beach 714-379-7100
Chapman Appl. Service
San Diego 619-298-7106
P & D Appliance
Commercial Parts & Service, Inc.
S. San Francisco 650-635-1900

COLORADO

Hawkins Commercial Appliance
Englewood 303-781-5548

FLORIDA

Whaley Foodservice Repair
Jacksonville 904-725-7800
Nass Service Co., Inc.
Orlando 407-425-2681
B.G.S.I.
Pompano Beach 954-971-0456
Comm. Appliance Service
Tampa 813-663-0313

GEORGIA

Heritage Service Group
Norcross 866-388-9837
Southeastern Rest. Svc.
Norcross 770-446-6177
TWC Services
Smyrna 770-438-9797

HAWAII

Burney's Comm. Service, Inc.
Honolulu 808-848-1466
Food Equip Parts & Service
Honolulu 808-847-4871

ILLINOIS

Cone's Repair Service
Moline 309-797-5323
Eichenauer Elec. Service
Decatur 217-429-4229
Midwest Elec. Appl. Service
Elmhurst 630-279-8000
Parts Town
Lombard 708-865-7278

INDIANA

GCS Service
Indianapolis 317-545-9655

IOWA

Electric Motor Service Co.
Davenport 319-323-1823
Goodwin Tucker Group
Des Moines 515-262-9308

KENTUCKY

Certified Service Center
Lexington 859-254-8854
Certified Service Center
Louisville 502-964-7007

LOUISIANA

Chandlers Parts & Service
Baton Rouge 225-272-6620

MARYLAND

Electric Motor Service
Baltimore 410-467-8080
GCS Service
Silver Spring 301-585-7550

MASSACHUSETTS

Ace Service Co., Inc.
Needham 781-449-4220

MICHIGAN

Commercial Kitchen Service
Bay City 517-893-4561
Bildons Appliance Service
Detroit 248-478-3320
Midwest Food Equip. Service
Grandville 616-261-2000

MINNESOTA

GCS Service
Minneapolis 612-546-4221

MISSOURI

General Parts
Kansas City 816-421-5400
Commercial Kitchen Services
St. Louis 314-890-0700
Kaemmerlen Parts & Service
St. Louis 314-535-2222

NEBRASKA

Anderson Electric
Omaha 402-341-1414

NEVADA

Burney's Commercial
Las Vegas 702-736-0006
Hi. Tech Commercial Service
N. Las Vegas 702-649-4616

NEW JERSEY

Jay Hill Repair
Fairfield 973-575-9145
Service Plus
Flanders 973-691-6300

NEW YORK

Acme American Repairs, Inc.
Brooklyn 718-456-6544
Alpro Service Co.
Brooklyn 718-386-2515
Appliance Installation
Buffalo 716-884-7425
Northern Parts Dist.
Plattsburgh 518-563-3200
J.B. Brady, Inc.
Syracuse 315-422-9271

NORTH CAROLINA

Authorized Appliance
Charlotte 704-377-4501

OHIO

Akron/Canton Comm. Svc. Inc.
Akron 330-753-6635
Certified Service Center
Cincinnati 513-772-6600
Commercial Parts and Service
Columbus 614-221-0057
Electrical Appl. Repair Service
Independence 216-459-8700
E. A. Wichman Co.
Toledo 419-385-9121

OKLAHOMA

Hagar Rest. Service, Inc.
Oklahoma City 405-235-2184
Krueger, Inc.
Oklahoma City 405-528-8883

OREGON

Ron's Service, Inc.
Portland 503-624-0890

PENNSYLVANIA

Elmer Schultz Services
Philadelphia 215-627-5401
FAST Comm. Appl. Service
Philadelphia 215-288-4800
Appliance Installation & Service
Pittsburgh 412-809-0244

K & D Service Co.
Harrisburg 717-236-9039

Electric Repair Co.
Reading 610-376-5444

RHODE ISLAND

Marshall Electric Co.
Providence 401-331-1163

SOUTH CAROLINA

Whaley Foodservice Repair
W. Columbia 803-791-4420

TENNESSEE

Camp Electric
Memphis 901-527-7543

TEXAS

GCS Service
Fort Worth 817-831-0381
Armstrong Repair Service
Houston 713-666-7100
Commercial Kitchen Repair Co.
San Antonio 210-735-2811

UTAH

La Monica's Rest. Equip. Service
Murray 801-263-3221

VIRGINIA

Daubers
Norfolk 757-855-4097
Daubers
Springfield 703-866-3600

WASHINGTON

Restaurant Appl. Service
Seattle 206-524-8200

WISCONSIN

A.S.C., Inc.
Madison 608-246-3160
A.S.C., Inc.
Milwaukee 414-543-6460

CANADA

ALBERTA

Key Food Equipment Service
Edmonton 780-438-1690

BRITISH COLUMBIA

Key Food Equipment Service
Vancouver 604-433-4484

MANITOBA

Air Rite, Inc.
Winnipeg 204-895-2300

NEW BRUNSWICK

EMR Services, Ltd.
Moncton 506-855-4228

ONTARIO

Choquette CKS
Ottawa 613-739-8458
R.G. Henderson Ltd.
Toronto 416-422-5580

QUÉBEC

Choquette CKS
Montreal 514-722-2000
Choquette CKS
Québec City 418-681-3944

HATCO CORPORATION

P.O. Box 340500, Milwaukee, WI 53234-0500 U.S.A.

(800) 558-0607 (414) 671-6350

Parts & Service Fax (800) 690-2966 Int'l. Fax (414) 671-3976

www.hatcocorp.com