

SECTION 8. PARTS INFORMATION

8-1. INTRODUCTION

This section lists the replaceable parts of the Henny Penny Model LVE fryer.

8-2. GENUINE PARTS

Use only genuine Henny Penny parts in your fryer. Using part of lesser quality or substitute design may result in damage to the unit or personal injury.

8-3. WHEN ORDERING PARTS

Once the parts that you want to order have been found in the parts list, write down the following information:

Item Number 2
Part Number 60241 Example:
Description High Limit

From the data plate, list the following information:

Product Number 01100
Serial Number 0001 Example:
Voltage 208

8-4. PRICES

Your distributor has a price parts list and will be glad to inform you of the cost of your parts order.

8-5. DELIVERY

Commonly replaced items are stocked by your distributor and will be sent out when your order is received. Other parts will be ordered, by your distributor, from Henny Penny Corporation. Normally, these will be sent to your distributor within three working days.

8-6. WARRANTY

All replacement parts (except lamps and fuses) are warranted for 90 days against manufacturing defects and workmanship. If damage occurs during shipping, notify the carrier at once so that a claim may be properly filed. Refer to warranty in the front of this manual for other rights and limitations.

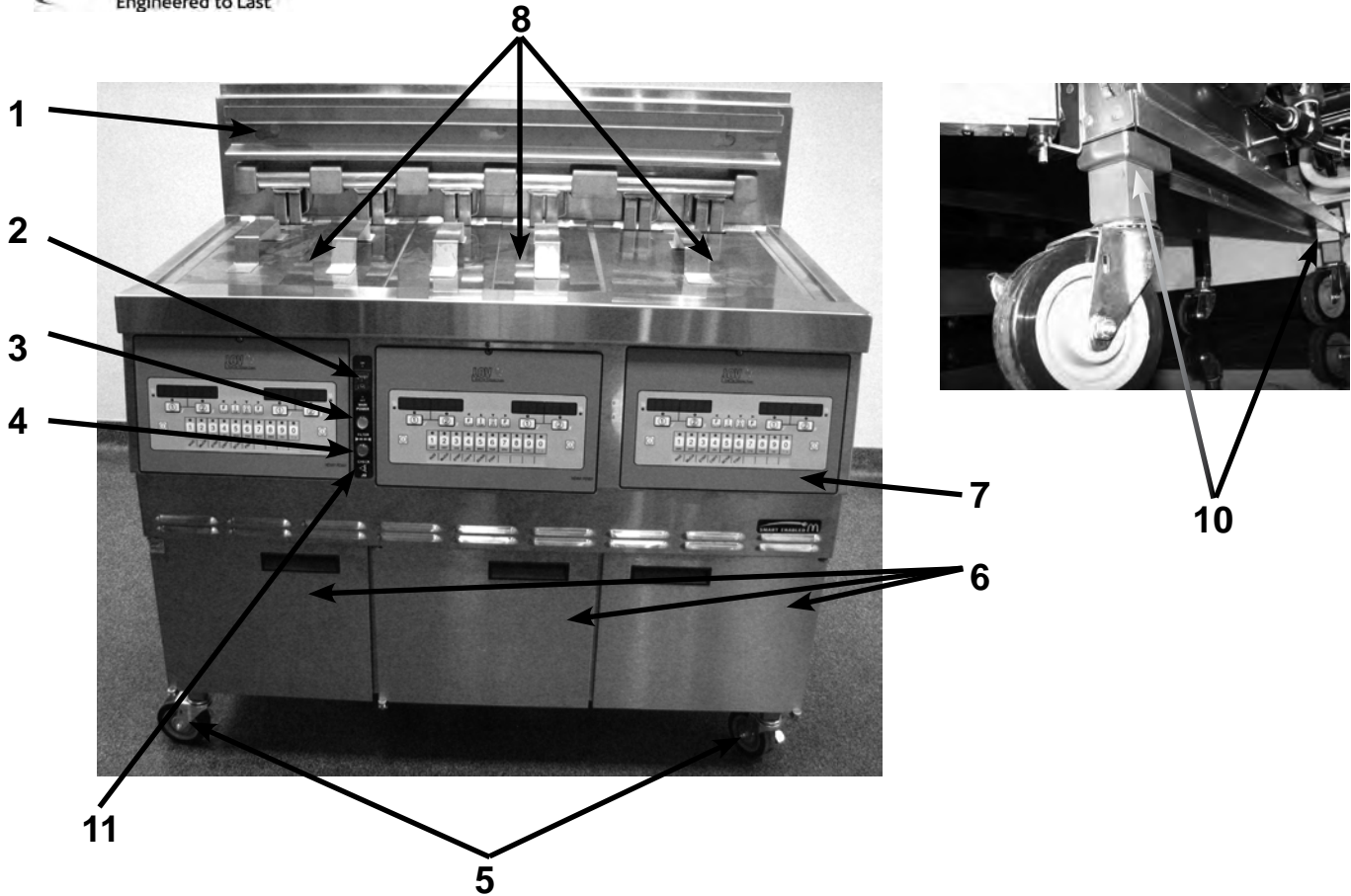
8-7. RECOMMENDED SPARE PARTS FOR DISTRIBUTORS

Recommended replacement parts are indicated with A or B in the parts lists:

A = parts to be stocked on service vans or trucks

B = parts to be stocked at the distributor/KES location.

Inventory on all other parts not identified, should be based upon usage in the territory. Please use care when ordering recommended parts, because all voltages and variations are marked. Distributors should order parts based upon common voltages and equipment sold in their territory.



Item No.	Part No.	Description	Quantity
1	77842	HANGER-BASKET - LVE-202.....	1
1	77709	HANGER-BASKET - LVE-203.....	1
1	77934	HANGER-BASKET - LVE-204.....	1
A 2	52224	SWITCH - POWER.....	1
B 3	75860	LIGHT - INDICATOR - BLUE.....	1
B 4	75859	LIGHT - INDICATOR - YELLOW	1
5	77575	CASTER - 4" - W/BRAKE.....	2
6	-----	DOOR.....	See Chart on Next Page
B 7	83515RB	ASSY - CONTROL - LOV.....	1/well**
8	03623	WELD ASSY - COVER - SPLIT VAT.....	1/vat
8	03624	WELD ASSY - COVER - FULL VAT.....	1/vat
9*	77679	CASTER - REAR - 4"	2
10	83933	SUPPORT - CASTER MTG LVE 203/204.....	4
10	83937	SUPPORT - CASTER MTG LVE 202	4
11	77103	DECAL-FLTR/CK JIB/MAIN POWER	1
12*	03691	ACCESSORY-BLUE LIGHT BAR 3W.....	1

Recommend Parts: A=Truck Stock/B=Dist. Stock

*not shown

**LVE-202=2; LVE-203=3; LVE-204=4

83774 LH Door Assy without Holder	86382 RH Door Assy with Holder
--	---

Model LVE-202

83774 LH Door Assy without Holder	83774 LH Door Assy without Holder	86382 RH Door Assy with Holder
--	--	---

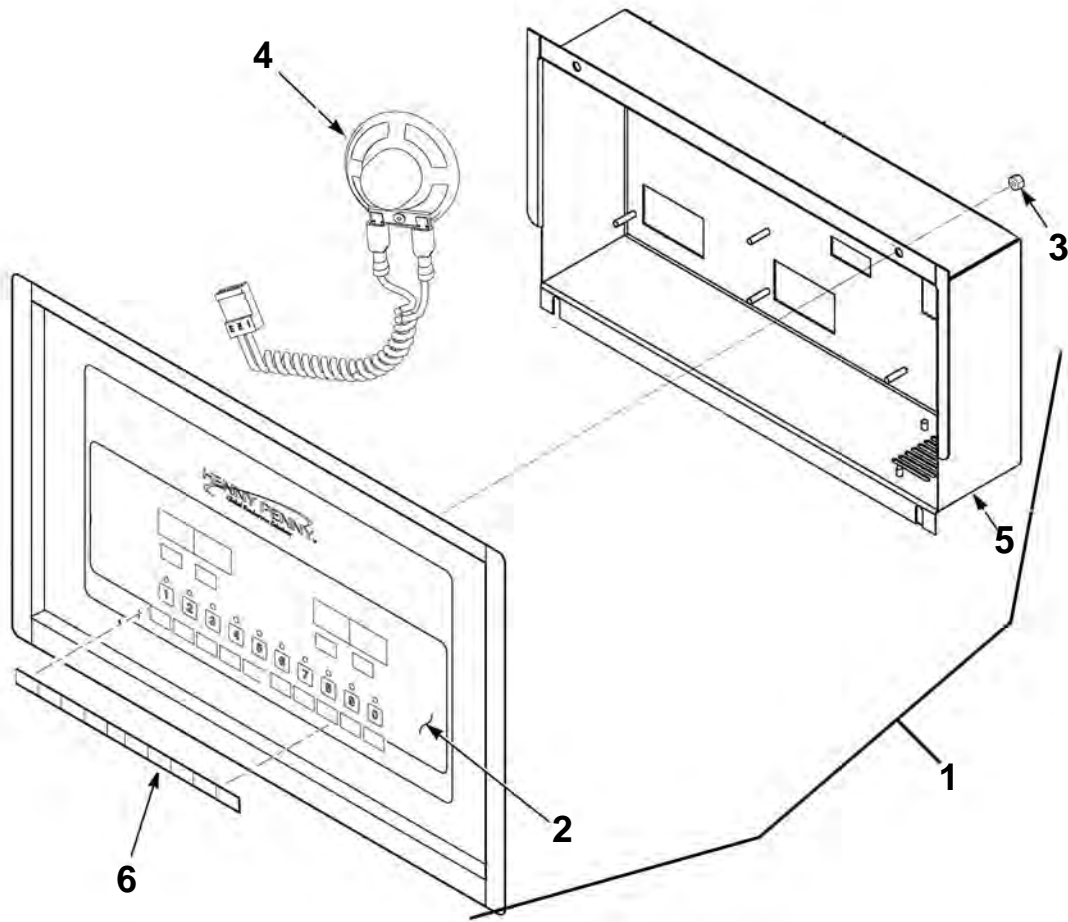
Model LVE-203

83774 LH Door Assy without Holder	83774 LH Door Assy without Holder	83727 RH Door Assy without Holder	86382 RH Door Assy with Holder
--	--	--	---

Model LVE-204

Door Hinge Chart					
Door	Top Hinge (Door)	Bottom Hinge (Door)	Left Hinge (Frame)	Right Hinge (Frame)	Bushing
83774	83903	83904	85409	-	39752
86382	83904	83903	-	85408	39752
83727	83904	83903	-	85408	39752

Control Panel Assembly

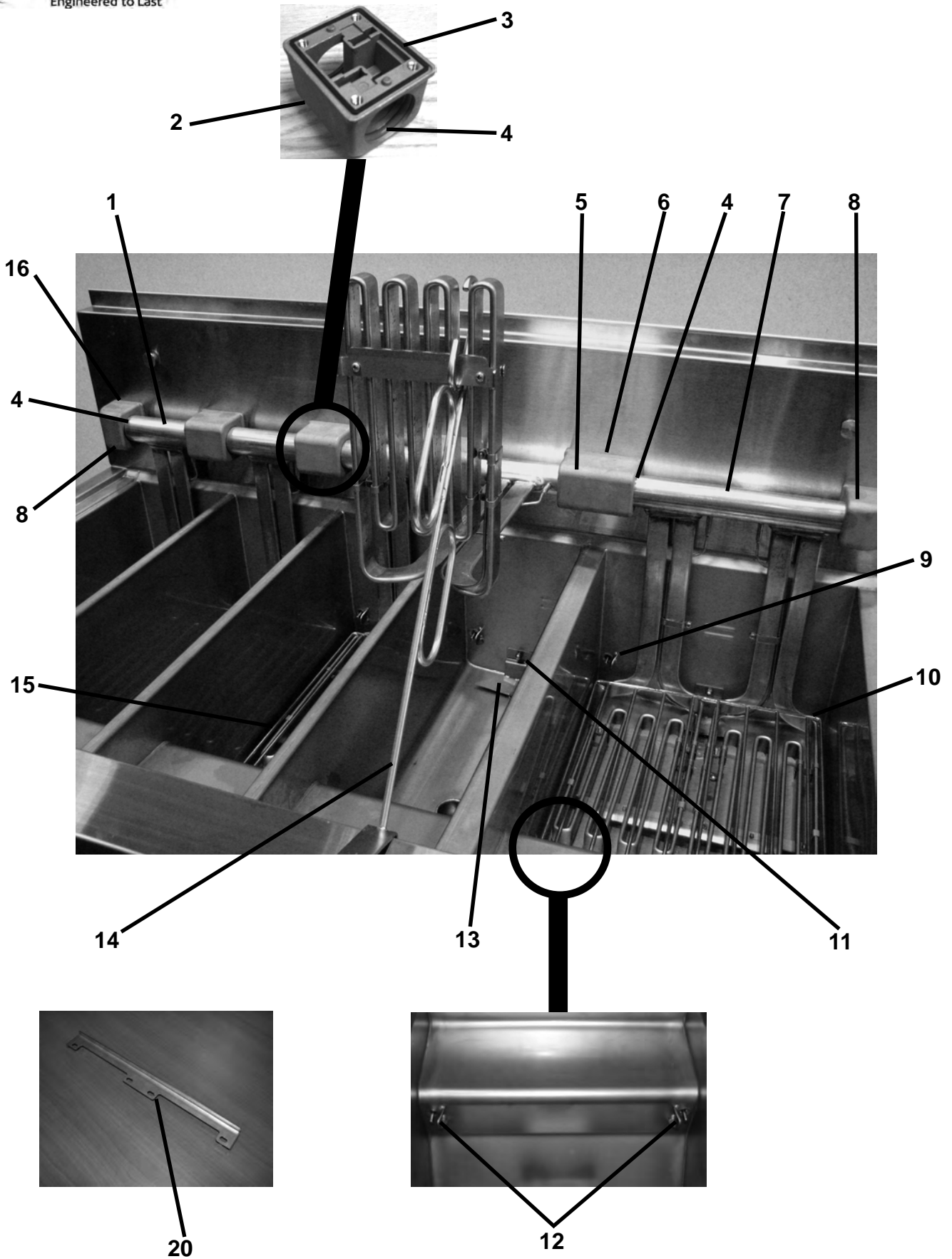


Item No.	Part No.	Description	Quantity
B 1	83515RB	ASSY - CONTROL - LOV	1/well**
2	85378	DECAL - LOV MCD	1/control
3	NS02-005	NUT - HEX KEPS #6-32 C	23/control
B 4	26974	ASSY - SPEAKER	1/control
5	83498	STUD ASSY - CONTROL PANEL COVER	1/control
6	77249	MENU CARD - BLANK - LOV	1/control
6	77250	MENU CARD - FVA - LOV	1/control
6	77251	MENU CARD - SPA - LOV	1/control
A 7*	MS01-571	TOOL - TERMINAL EXTRACTOR (not shown)	1
8	140130	KIT-LVE/LVG-MMC COMM	1

Recommend Parts: A=Truck Stock/B=Dist. Stock

*not shown

**LVE-202=2; LVE-203=3; LVE-204=4



NOTICE Replace seals & o-rings when replacing elements

Item No.	Part No.	Description	Quantity	
B 1	92104-001	ELEMENT-7 KW-SPLIT,208-60-3, 3 wire	1/split	
B 1	92104-002	ELEMENT-7 KW-SPLIT, 230/400-50-3, 4 wire	1/split	
B 1	92104-005	ELEMENT-7 KW-SPLIT, 220/380-50/60-3, 4 wire	1/split	
B 1	92104-006	ELEMENT-7 KW-SPLIT, 240/415-50-3, 4 wire	1/split	
B 1	92104-007	ELEMENT-7 KW-SPLIT, 220-60-3, 3 wire	1/split	
B 1	92104-008	ELEMENT-7 KW-SPLIT, 230-50-3, 3 wire	1/split	
B 1	92104-009	ELEMENT-7 KW-SPLIT, 240-60-3, 3 wire	1/split	
	2	86305	BLOCK-PIVOT-S TO S (See chart on next page)	AR
B 3	86308	SEAL-S TO S PIVOT BLOCK (See chart on next page)	AR	
B 4	76948	O-RING.....	2/block	
	5	86304	BLOCK-PIVOT-S TO F (See chart on next page)	AR
B 6	86307	SEAL-S TO F PIVOT BLOCK (See chart on next page)	AR	
B 7	92103-001	ELEMENT-14 KW-FULL, 208-60-3, 3 wire	1/full	
B 7	92103-002	ELEMENT-14 KW-FULL, 230/400-50-3, 4 wire	1/full	
B 7	92103-005	ELEMENT-14 KW-FULL, 220/380-50/60-3, 4 wire	1/full	
B 7	92103-006	ELEMENT-14 KW-FULL, 240/415-50-3,4 wire	1/full	
B 7	92103-007	ELEMENT-14 KW-FULL, 220-60-3, 3 wire	1/full	
B 7	92103-008	ELEMENT-14 KW-FULL, 230-50-3, 3 wire	1/full	
B 7	92103-009	ELEMENT-14 KW-FULL, 240-60-3, 3 wire	1/full	
	8	86303	BLOCK-PIVOT-F TO F (See chart on next page)	AR
A 9	140099	KIT-TEMPERATURE PROBE (3").....	1/vat	
B 10	84942	RACK - FULL VAT (w/o wear strip).....	1/vat	
	11	NS03-044	NUT - ACORN - #10-24 - SS.....	1/vat
A 12	140098	KIT-OIL LEVEL PROBE (2-1/2").....	2/vat	
	13	77838	WELD ASSY- LOV OIL DIVERTER.....	1/vat
	13	77443	WELD ASSY- FISH OIL DIVERTER	1/vat
B 14	74725	HANDLE - ELEMENT LIFT.....	1	
B 15	84943	RACK - SPLIT VAT	1/vat	
B 16	86306	SEAL-F TO F PIVOT BLOCK (See chart on next page)	AR	
	17*	76563	WELD ASSY - SEAM COVER - LVE-202	1
	17*	76500	WELD ASSY - SEAM COVER - LVE-203	1
	17*	77613	WELD ASSY - SEAM COVER - LVE-204	1
	18*	76564	EXTENSION-SHROUD - LVE-202	1
	18*	76501	EXTENSION-SHROUD - LVE-203	1
	18*	77614	EXTENSION-SHROUD - LVE-204	1
	19*	NS03-044	NUT - ACORN - #10-24 - SS.....	3
	20	140288	KIT-FULL LVE20X ELEMENT GUARD.....	1/vat
	20	140300	KIT-SPLIT LVE20X ELEMENT GUARD	1/vat
	21*	96887	KIT-THERMOCOUPLE LVE200	1/vat

Recommend Parts: A=Truck Stock/B=Dist. Stock

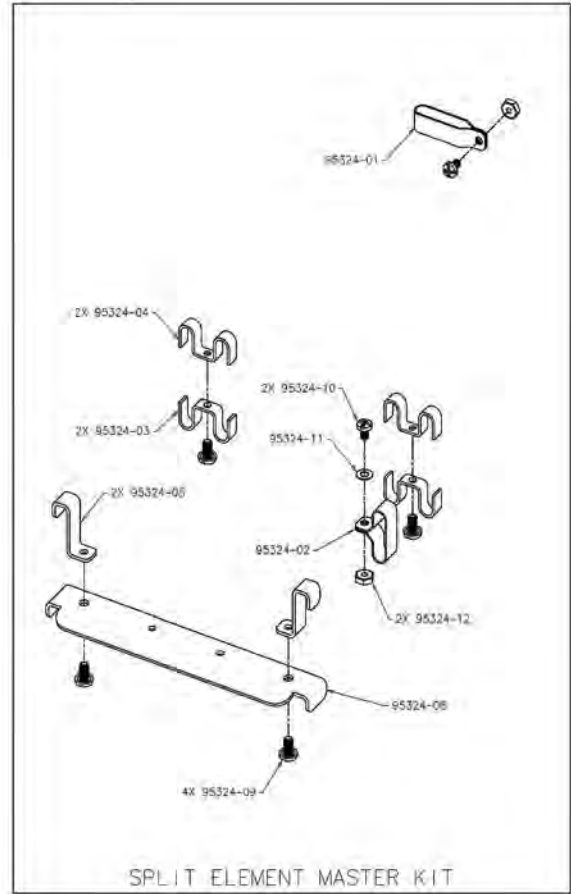
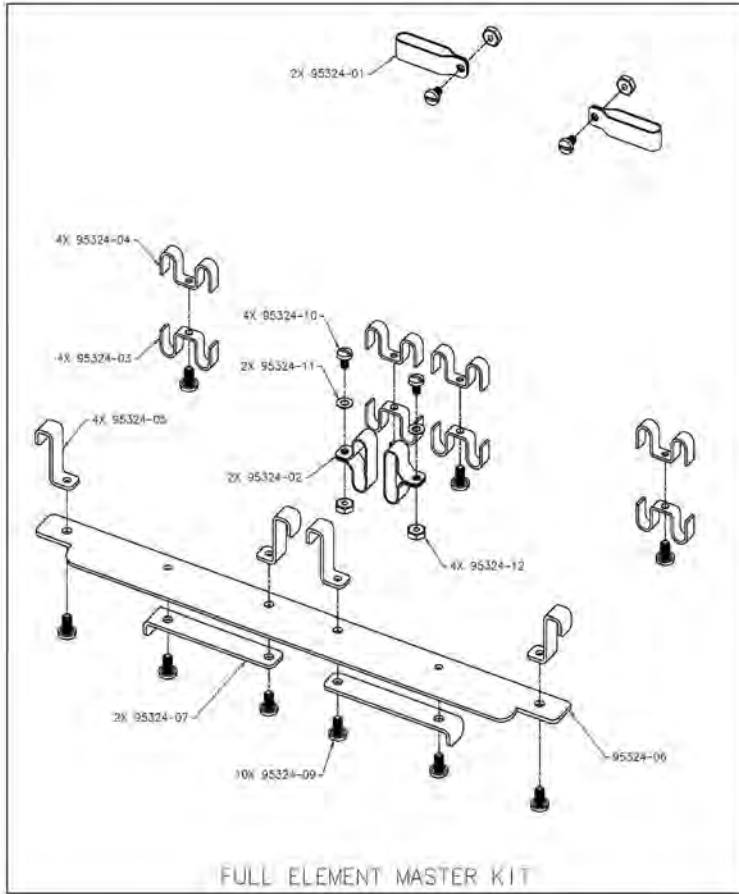
*not shown

AR - as required; see chart on next page

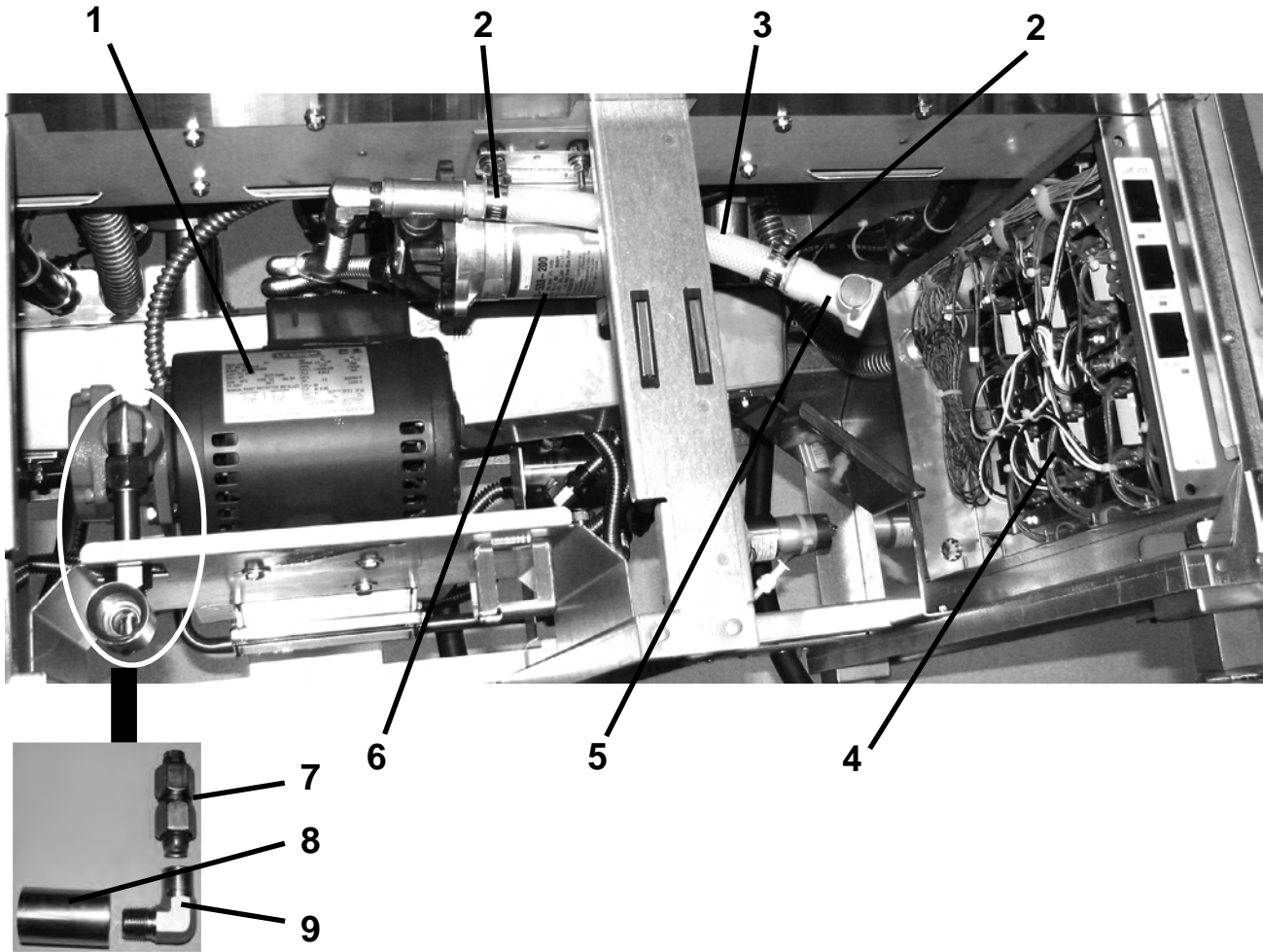
FRYER MODEL	PIVOT BLOCK			PIVOT BLOCK SEAL		
	QTY	P/N & TYPE		QTY	P/N & TYPE	
202FF	4	86303	F TO F (end block)	4	86306	F TO F
203FFF	6	86303	F TO F (end block)	6	86306	F TO F
204FFFF	8	86303	F TO F (end block)	8	86306	F TO F
202SS	2	86303	F TO F (end block)	2	86306	F TO F
	3	86305	S TO S	3	86308	S TO S
203SSS	2	86303	F TO F (end block)	2	86306	F TO F
	5	86305	S TO S	5	86308	S TO S
204SSSS	2	86303	F TO F (end block)	2	86306	F TO F
	7	86305	S TO S	7	86308	S TO S
202FD/FR/FS	2	86303	F TO F (end block)	2	86306	F TO F
	1	86304	STO F	1	86307	S TO F
	1	86305	S TO S	1	86308	S TO S
203FSD/FSR/FSS	2	86303	F TO F (end block)	2	86306	F TO F
	1	86304	S TO F	1	86307	S TO F
	3	86305	S TO S	3	86308	S TO S
204FSSD/FSSR/FSSS	2	86303	F TO F (end block)	2	86306	F TO F
	1	86304	S TO F	1	86307	S TO F
	5	86305	S TO S	5	86308	S TO S
202DF/LF/SF	2	86303	F TO F (end block)	2	86306	F TO F
	1	86304	S TO F	1	86307	S TO F
	1	86305	S TO S	1	86308	S TO S
203FFD/FFR/FFS	4	86303	F TO F (end block)	4	86306	F TO F
	1	86304	S TO F	1	86307	S TO F
	1	86305	S TO S	1	86308	S TO S
204FFSD/FFSR/FFSS	4	86303	F TO F (end block)	4	86306	F TO F
	1	86304	S TO F	1	86307	S TO F
	3	86305	S TO S	3	86308	S TO S
203DSF/LSF/SSF	2	86303	F TO F (end block)	2	86306	F TO F
	1	86304	S TO F	1	86307	S TO F
	3	86305	S TO S	3	86308	S TO S
204FFFD/FFFR/FFFS	6	86303	F TO F (end block)	6	86306	F TO F
	1	86304	S TO F	1	86307	S TO F
	1	86305	S TO S	1	86308	S TO S
203DFF/LFF/SFF	4	86303	F TO F (end block)	4	86306	F TO F
	1	86304	S TO F	1	86307	S TO F
	1	86305	S TO S	1	86308	S TO S
204DSSF/LSSF/SSSF	2	86303	F TO F (end block)	2	86306	F TO F
	1	86304	S TO F	1	86307	S TO F
	5	86305	S TO S	5	86308	S TO S
204DSFF/LSFF/SSFF	4	86303	F TO F (end block)	4	86306	F TO F
	1	86304	S TO F	1	86307	S TO F
	3	86305	S TO S	3	86308	S TO S
204DFFF/LFFF/SFFF	6	86303	F TO F (end block)	6	86306	F TO F
	1	86304	S TO F	1	86307	S TO F
	1	86305	S TO S	1	86308	S TO S

Note: See Model Variant Legend on page 8-13 for model configuration explanation.

ELEMENT HARDWARE

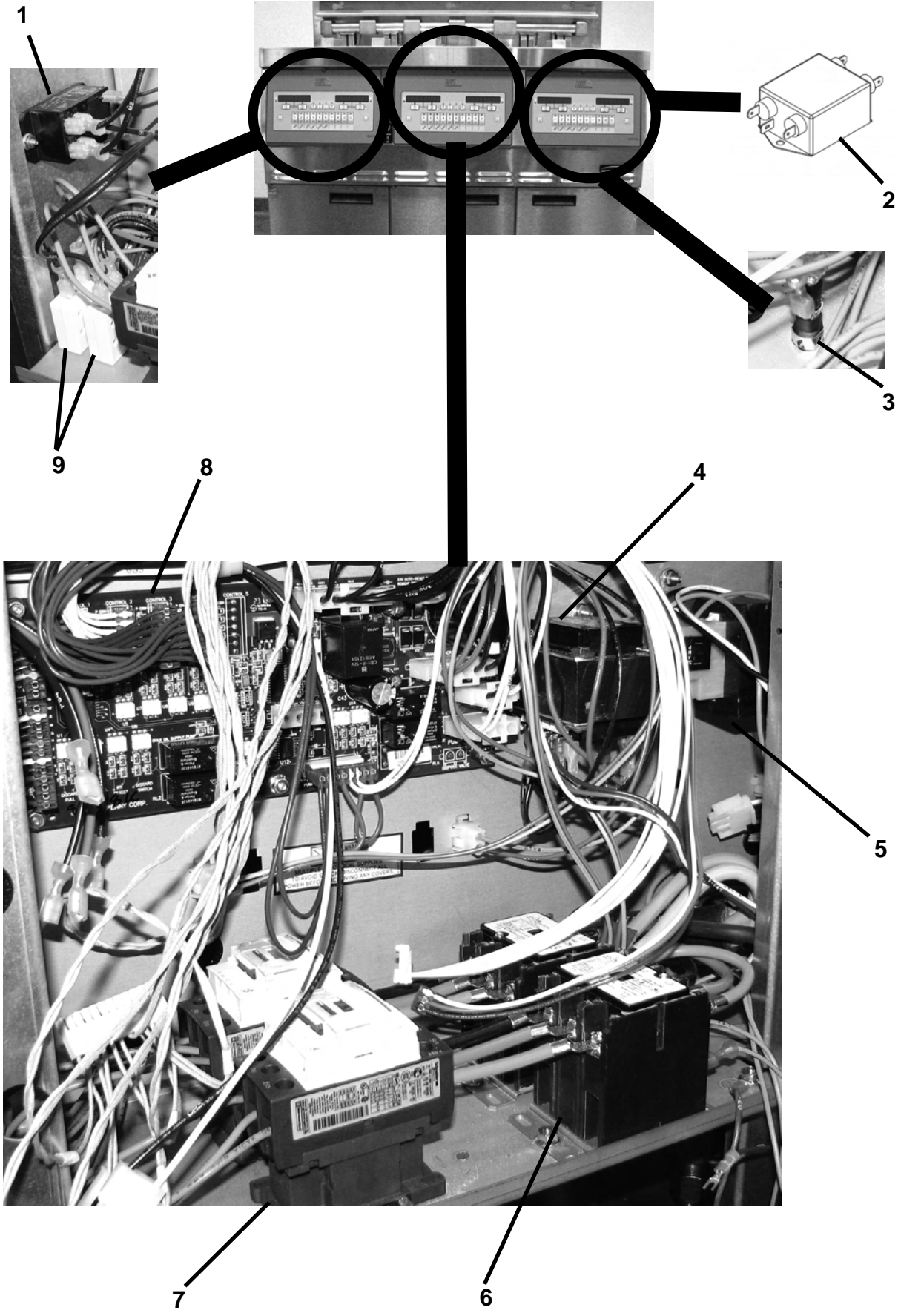


P/N	WATLOW P/N	DESCRIPTION	FULL ELEMENT	SPLIT ELEMENT
95324-01	165-53-21-1	CLIP-HI LIMIT TIP	2	1
95324-02	165-53-22-1	CLIP-HI LIMIT REAR	2	1
95324-03	71-53-1561-1	SPACER-ELEMENT LOWER	4	2
95324-04	71-53-1561-2	SPACER-ELEMENT UPPER	4	2
95324-05	71-53-1540-1	BRACKET-FOOT TOP	4	2
95324-06	71-15-1500-1	BRACKET-FOOT MOUNTING FULL	1	—
95324-07	71-15-1525-1	BRACKET-FOOT BOTTOM FULL	2	—
95324-08	71-53-1489-1	BRACKET-FOOT BOTTOM SPLIT	—	1
95324-09	429-80-45-38	SCREW-#8-AB X .375 LONG	10	4
95324-10	429-80-34-26	SCREW-#8-32 X .250 LONG	4	2
95324-11	523-60-1-50	WASHER	4	2
95324-12	363-60-1-6	NUT-#8-32 SS	4	2



Item No.	Part No.	Description	Quantity
1	85777	PUMP & MOTOR ASSY.-60 HZ (See page 8-15 for details)	1
1	93297	PUMP & MOTOR ASSY.-50 HZ (See page 8-15 for details)	1
2	MS01-297	CLAMP-HOSE.....	2
B 3	89622-001	HOSE.....	1
A 4	83581-001	CONTROL-HIGH LIMIT-120V (120V control/hood interlock circuit)	1/vat
A 4	83581-002	CONTROL-HIGH LIMIT-230V(230V control/hood interlock circuit)	1/vat
B 5	FP05-016	DISCONNECT-QUICK-1/2".....	1
B 6	73473	PUMP - OIL TOP OFF - 120V (120V control/hood interlock circuit).	1
B 6	74583	PUMP - OIL TOP OFF - 230V(230V control/hood interlock circuit)..	1
7	84288	ASSY - FILTER INLET TUBE.....	1
8	83429	ADAPTOR - TUBE END.....	1
9	17407	CONNECTOR - 1/2 MALE ELBOW.....	1

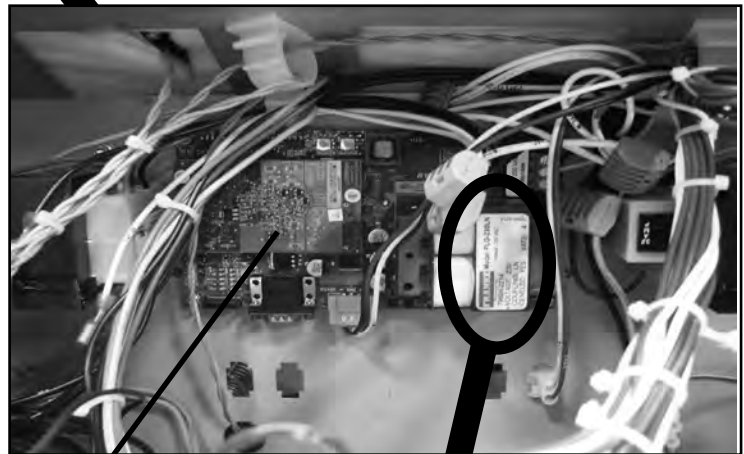
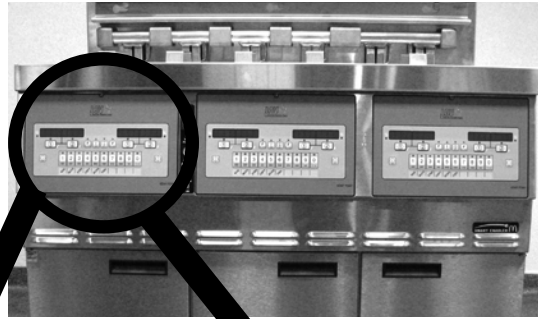
Recommend Parts: A=Truck Stock/B=Dist. Stock



Item No.	Part No.	Description	Quantity
B 1	ME90-008	RELAY - PUMP MOTOR- 12 VDC - 30 AMP.....	1
B 2	80728	EMI FILTER - CE	1
A 3	EF02-104	FUSE HOLDER - 20A-250V	1
A 3	FA52-010	FUSE - 1 AMP (208/240V FRYERS).....	1
A 3	FA52-015	FUSE - 1.5 AMP (380/400/415V FRYERS).....	1
B 4	TS22-012	TRANSFORMER - AIF	1
A 5	86086	TRANSFORMER-120V/75VA	1/vat
A 5	86087	TRANSFORMER (CE)-24V/240V/75VA	1/vat
A 6	29509	CONTACTOR - 24V COIL (Primary Contactor)	1/vat
A 7	65073	CONTACTOR - 24V COIL (Heat Contactor).....	1/vat
B 8	85698RB	PC BOARD - SELECTOR AIF	1
A 9	EF02-125	BREAKER-PUSH BUTTON RESET - 15 AMP	2

Recommend Parts: A=Truck Stock/B=Dist. Stock

* not shown



1

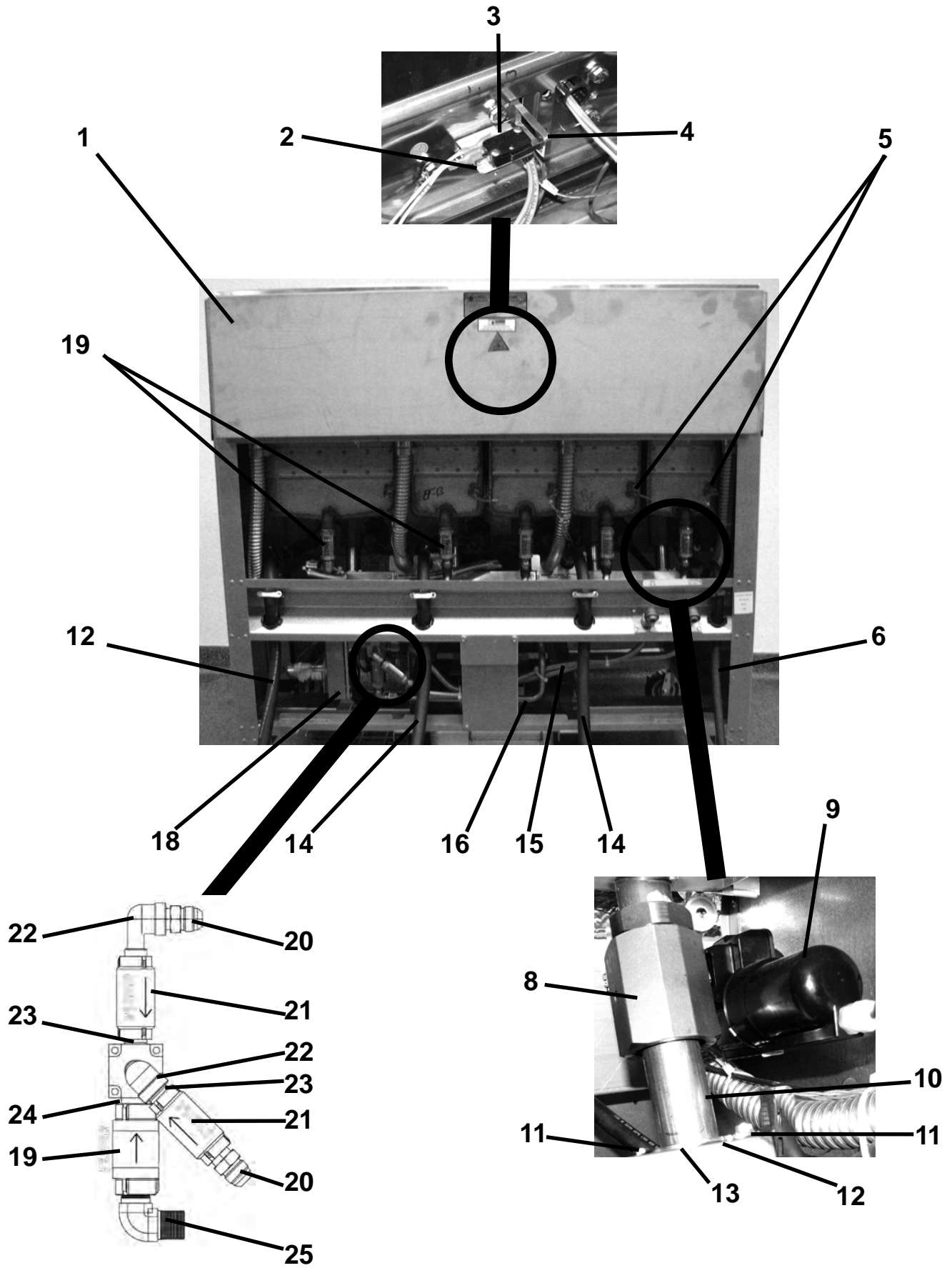
2

CENELEC YES/NO
Refer to chart below



Item No.	Part No.	Description	Quantity
B 1	82914	FILTER BOARD - 1P EMC - CE	1
2	79596-XXXX	GATEWAY - PCB (LONWORKS) see chart below.....	1

Part No.	Voltage	Transceiver Type	Model
79596-1202	115	NON-CENELEC	LVE-202
79596-1203	115	NON-CENELEC	LVE-203
79596-1204	115	NON-CENELEC	LVE-204
79596-2202	230	NON-CENELEC	LVE-202
79596-2203	230	NON-CENELEC	LVE-203
79596-2204	230	NON-CENELEC	LVE-204
79596-2212	230	CENELEC	LVE-202
79596-2213	230	CENELEC	LVE-203
79596-2214	230	CENELEC	LVE-204

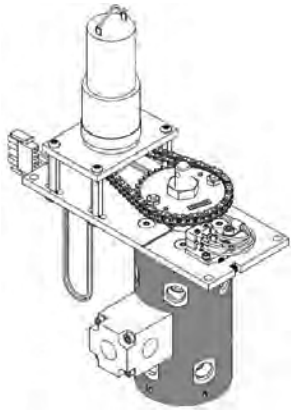


Item No.	Part No.	Description	Quantity
1	84372	COVER - REAR SHROUD - LVE-202	1
1	83681	COVER - REAR SHROUD - LVE-203	1
1	86345	COVER - REAR SHROUD - LVE-204	1
2	83034	BRACKET-SWITCH MOUNTING	1/vat
A 3	83096	SWITCH - ELEMENT LIFT	1/vat
4	83038	ARM-ELEMENT SENSE.....	1/vat
A 5	140099	PROBE - TEMPERATURE (3").....	1/vat
6	83333	ASSY-CORD & PLUG-INTERLOCK 120V	1
6	85335	ASSY-CE CORD & PLUG-INTERLOCK	1
6	85754	ASSY-CONTROL POWER CORD-FRANCE	1
6	85758	ASSY-CONTROL POWER CORD (8 FT)-ITALY	1
6	85759	ASSY-CORD & PLUG INTERLOCK-SINGAPORE/HONG KONG.....	1
6	85763	ASSY-CORD & PLUG INTERLOCK-NEW ZEALAND	1
7	81911	ASSY-DRAIN ACTUATOR W/O-RINGS	1/vat
B 8	140244	KIT- DRAIN VALVE W/O MODULE	AR
	76948	O-RING -325 (between drain valve and trough).....	AR
B 9	86157	MOTOR-ACTUATOR	AR
10	95704-001	TUBE-FISH VALVE TO TROUGH	1/vat
10	95704-002	TUBE-S/F VALVE TO TROUGH	1/vat
11	NS04-004	NUT.....	2
12	86442	SHIM.....	2
13	84419	CLAMP	1
14	83331	ASSY - POWER CORD & PLUG - 208-240V	**
14	85337	ASSY - CE POWER CORD & PLUG	**
14	85760	ASSY - POWER CORD & PLUG - SINGAPORE/HONG KONG.....	**
14	85761	ASSY - POWER CORD & PLUG - NORWAY.....	**
14	85762	ASSY - POWER CORD & PLUG (8 FT) - ITALY	**
14	85764	ASSY - POWER CORD & PLUG - AUSTRALIA	**
14	85765	ASSY - POWER CORD & PLUG - NEW ZEALAND.....	**
15	77523-0XX	TUBE-SUCTION (See chart on next page).....	AR
16	88679	ASSY-TUBE-PUMP TO SEL. VALVE (LVE-202).....	1
16	85869	ASSY-TUBE-PUMP TO SEL. VALVE (LVE-203/204).....	1
A 17*	85653	SWITCH - DRAIN PAN	1
18	84282	VALVE-SELECTOR.....	1
--	--	(See next page for Selector Valve parts)	-
A 19	74469	VALVE - CHECK - 1/2" (Vat Fill).....	AR
20	FP01-238	FTG-3/8 NPT STR 45 DEG FLARE	1
A 21	35472	CHECK VALVE-PRESSURE	2
22	FP01-087	STREET ELBOW-3/8 NPT SS	2
23	FP02-001	NIPPLE 3/8 CLOSE.....	2
24	FP01-028	NIPPLE, CLOSE 1/2 NPT SS 1 LG	1
25	17407	CONNECTOR 1/2 MALE ELBOW	1
A 26*	MS01-572	PRIMER-LOCTITE-0.8 OZ. (for check valve threads).....	1

Recommend Parts: A=Truck Stock/B=Dist. Stock

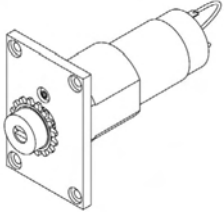
*not shown

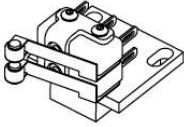
AR - as required (For 77523 see chart on next page)




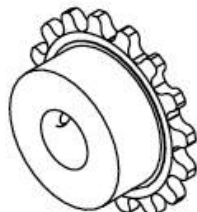
84282- VALVE-SELECTOR

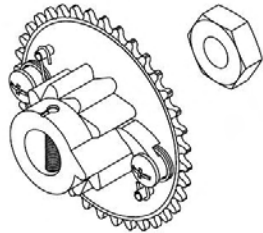
*The ONLY need for the whole selector valve assembly (84282) to be used for repair would be due to possible shipping damage, fork lift, etc. or damage to the selector valve body (see the drawing below stainless steel cylinder body in orange)

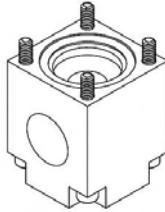
84282-001		
		
Desc.	Qty.	Req.
ASSY- SELECTOR VALVE MOTOR	1	B

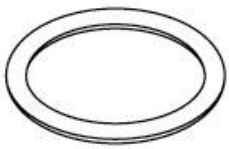
84282-002		
		
Desc.	Qty.	Req.
ASSY- SELECTOR VALVE SWITCH	1	A

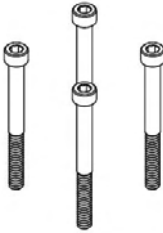
84282-003		
		
Desc.	Qty.	Req.
ASSY- SELECTOR VALVE CHAIN	1	-


84282-004		
		
Desc.	Qty.	Req.
ASSY- SELECTOR VALVE SPROCKET	1	-

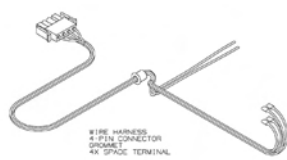
84282-005		
		
Desc.	Qty.	Req.
ASSY- SEL VALVE SPROCKET NUT	1	-

84282-006		
		
Desc.	Qty.	Req.
ASSY- SELECTOR VALVE MANIFOLD	1	-

84282-007		
		
Desc.	Qty.	Req.
ASSY- SELECTOR VALVE O-RING	1	-

84282-008		
		
Desc.	Qty.	Req.
ASSY- MANIFOLD FASTERS	1	-

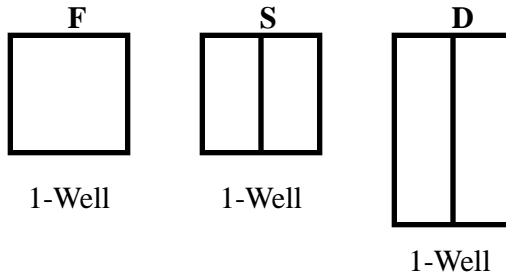
84282-009		
		
Desc.	Qty.	Req.
ASSY- SEL V MOUNTING	1	-

84282-010		
		
Desc.	Qty.	Req.
ASSY- SELECTOR VALVE HARN	1	-

SUCTION TUBE SELECTION CHART

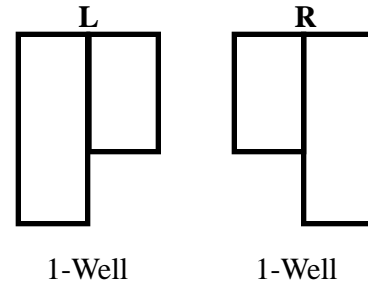
VARIANT LEGEND

F = Full well - 1 full width shallow vat
S = Split well - 2 narrow shallow vats
D = Split well - 2 narrow deep vats
L = Split well - 2 narrow vats with a deep vat on left and shallow vat on right
R = Split well - 2 narrow vats with a deep vat on right and shallow vat on left



LVE-202

P/N (LENGTH)	MODEL VARIANTS			
	FF	DS LS SD SR SS	FD FR FS	DF LF SF
77523-001 (12")	1	1	1	1
77523-002 (18")	1	2	2	1
77523-003 (24")	2	2	2	2
77523-004 (30")	2	3	2	3

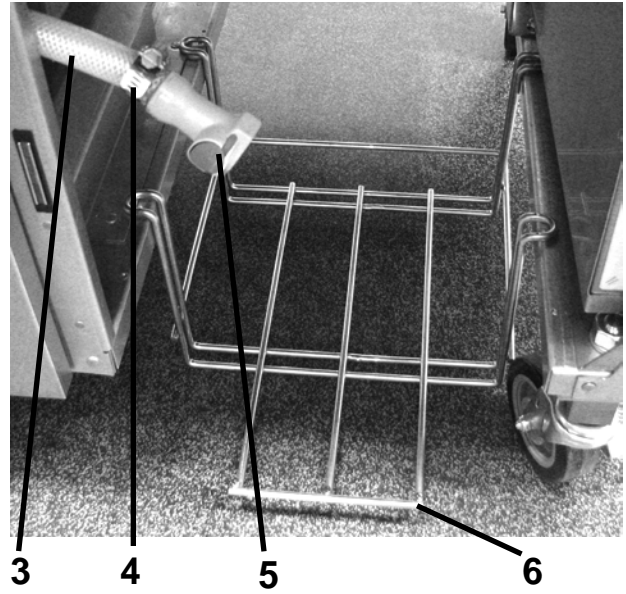
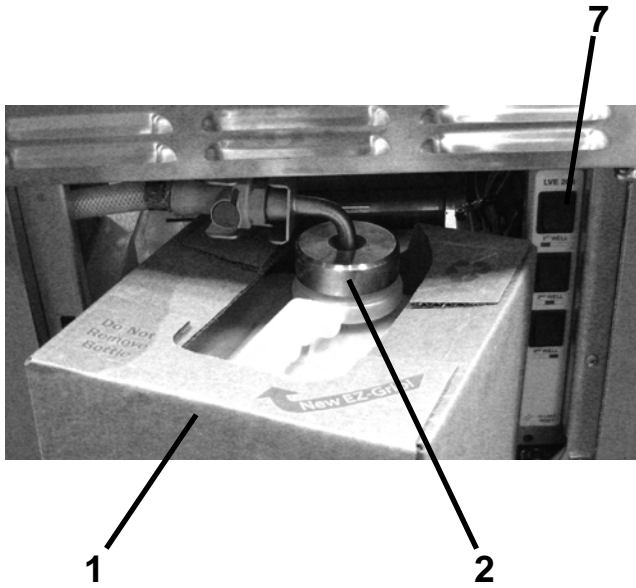


LVE-203

P/N (LENGTH)	MODEL VARIANTS					
	FFF	DSS SLS SSD SSR SSS	FSD FSR FSS	FFD FFR FFS	DSF LSF SSF	DFF LFF SFF
77523-002 (18")	1	2	2	2	1	1
77523-003 (24")	2	3	3	2	3	2
77523-004 (30")	3	3	3	3	3	3
77523-005 (36")	1	1	1	1	1	1
77523-006 (42")	--	1	--	--	1	1

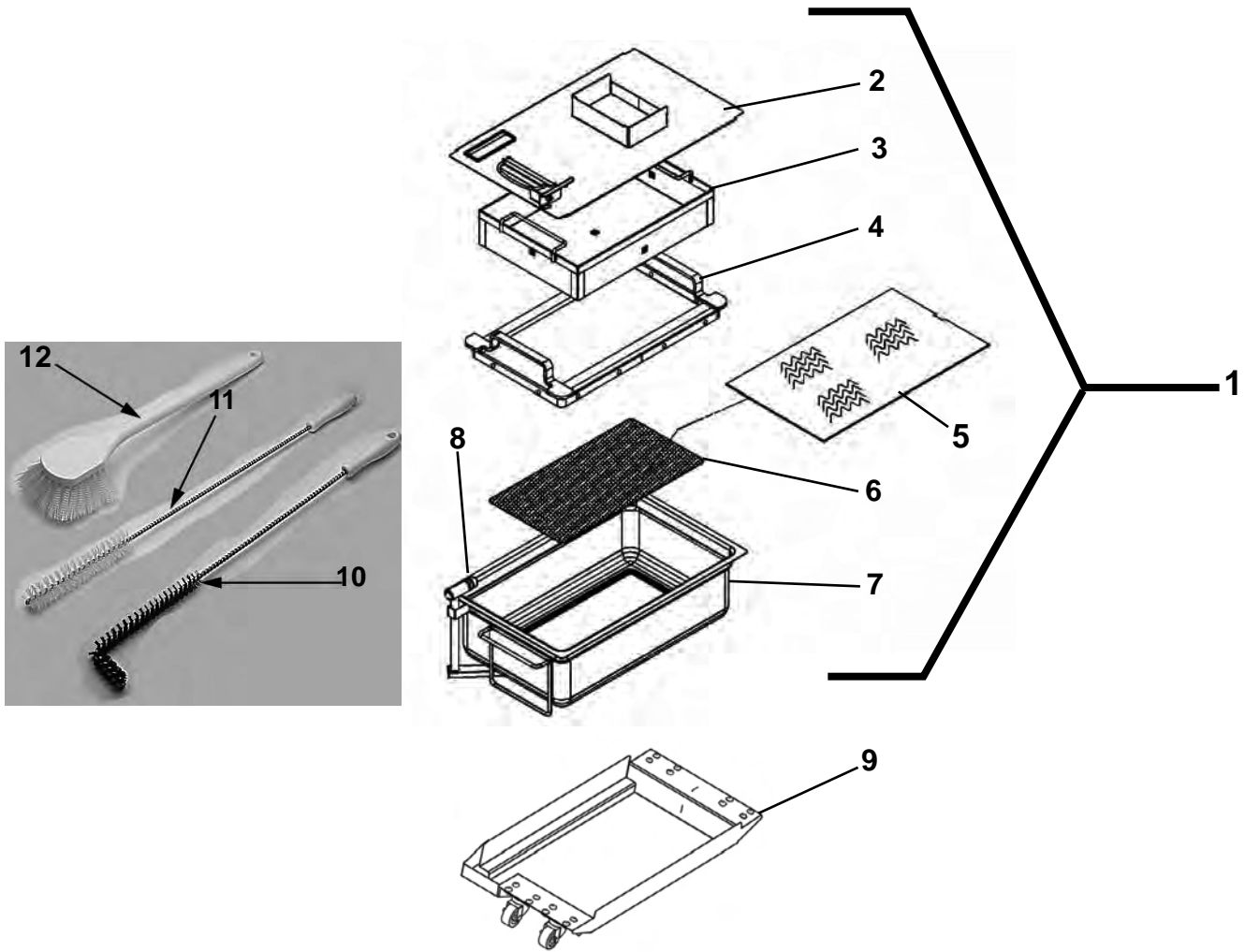
LVE-204

P/N (LENGTH)	MODEL VARIANTS							
	FFFF	DSSS LSSS SSSD SSSR SSSS	FSSD FSSR FSSS	FFSD FFSR FFSS	FFFD FFFR FFFS	DSSF LSSF SSSF	DSFF LSFF SSFF	DFFF LFFF SFFF
77523-002 (18")	--	1	1	1	1	--	--	--
77523-003 (24")	2	3	3	3	2	3	2	2
77523-004 (30")	2	2	2	2	2	2	2	2
77523-005 (36")	1	1	1	1	1	1	1	1
77523-006 (42")	1	2	2	1	1	2	2	1
77523-007 (42")	1	2	1	2	1	2	2	2
77523-010 (54")	1	1	1	--	1	1	1	1



Item No.	Part No.	Description	Quantity
1	03617	ACCESSORY-JUG-AUTO TOP OFF (EMPTY).....	1
B 2	85738	ASSY-JIB TUBE & QUICK DISC.....	1
B 2	151694	ASSY-RUSSIAN JIB TUBE	1
B 2	85737	ASSY-INT'L. JIB TUBE & QUICK DISC	1
A 2*	MS01-561	O-RING - JIB TUBE	1
B 2*	FP05-017	DISCONNECT-QUICK-3/8"	1
B 3	89622-001	HOSE	1
4	MS01-297	CLAMP-HOSE	2
B 5	FP05-016	DISCONNECT-QUICK-1/2"	1
6	83539	WELD ASSY - JIB SHELF	1
6	87189	WELD ASSY - JIB SHELF (Singapore only)	1
6	96441	RAISED JIB SHELF	1
A 7	84987	SWITCH - MOMENTARY SPLASH PROOF.....	3

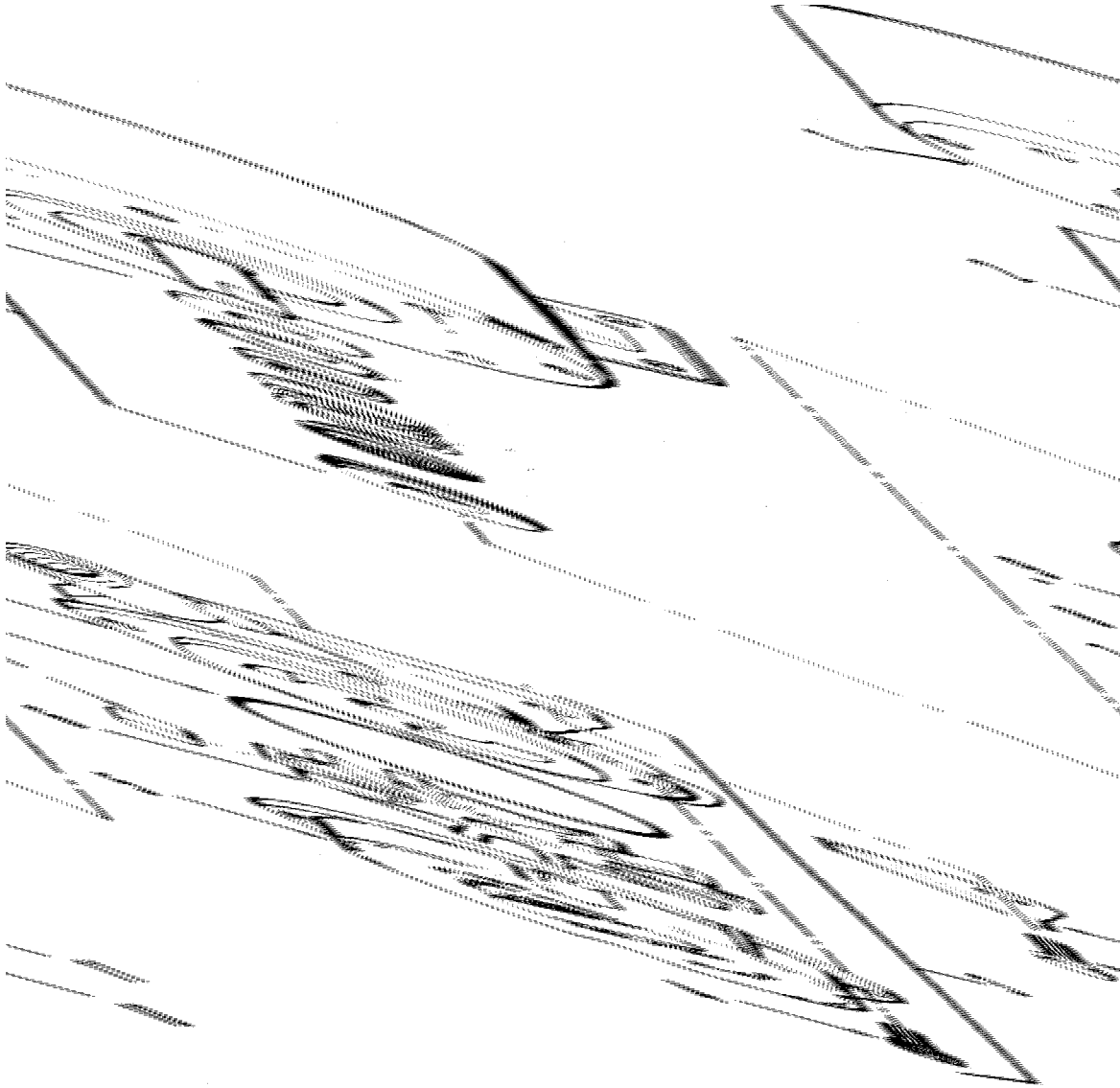
Recommend Parts: A=Truck Stock/B=Dist. Stock
*not shown



Filter Pan Assembly & Cleaning Brushes

Item No.	Part No.	Description	Quantity
1	84286	ASSY - DRAIN PAN - LVE	1
2	85650	ASSY-DRAIN PAN COVER.....	1
3	85507	WELD ASSY-CRUMB CATCHER	1
4	85503	WELD ASSY-FILTER WEIGHT	1
5	03190-054	McD's FILTER KIT (not supplied by Henny Penny)..... (includes fryer cleaner, 30 filter pads, & green cleaner pads)	1
6	85519	FILTER-SECTION	1
7	84652	WELD ASSY-DRAIN PAN.....	1
A 8	86349	O-RING-PICKUP TUBE.....	3
9	85584	ASSY-DRAIN PAN DOLLY	1
9	19004	CASTER - FILTER PAN	4
9	NS04-005	LOCKNUT	16
9	SC01-009	SCREW.....	16
B 10	12126	BRUSH - BLACK L.....	1
B 11	12112	BRUSH - STRAIGHT WHITE	1
B 12	12116	BRUSH - FRYER - LONG HANDLE	1

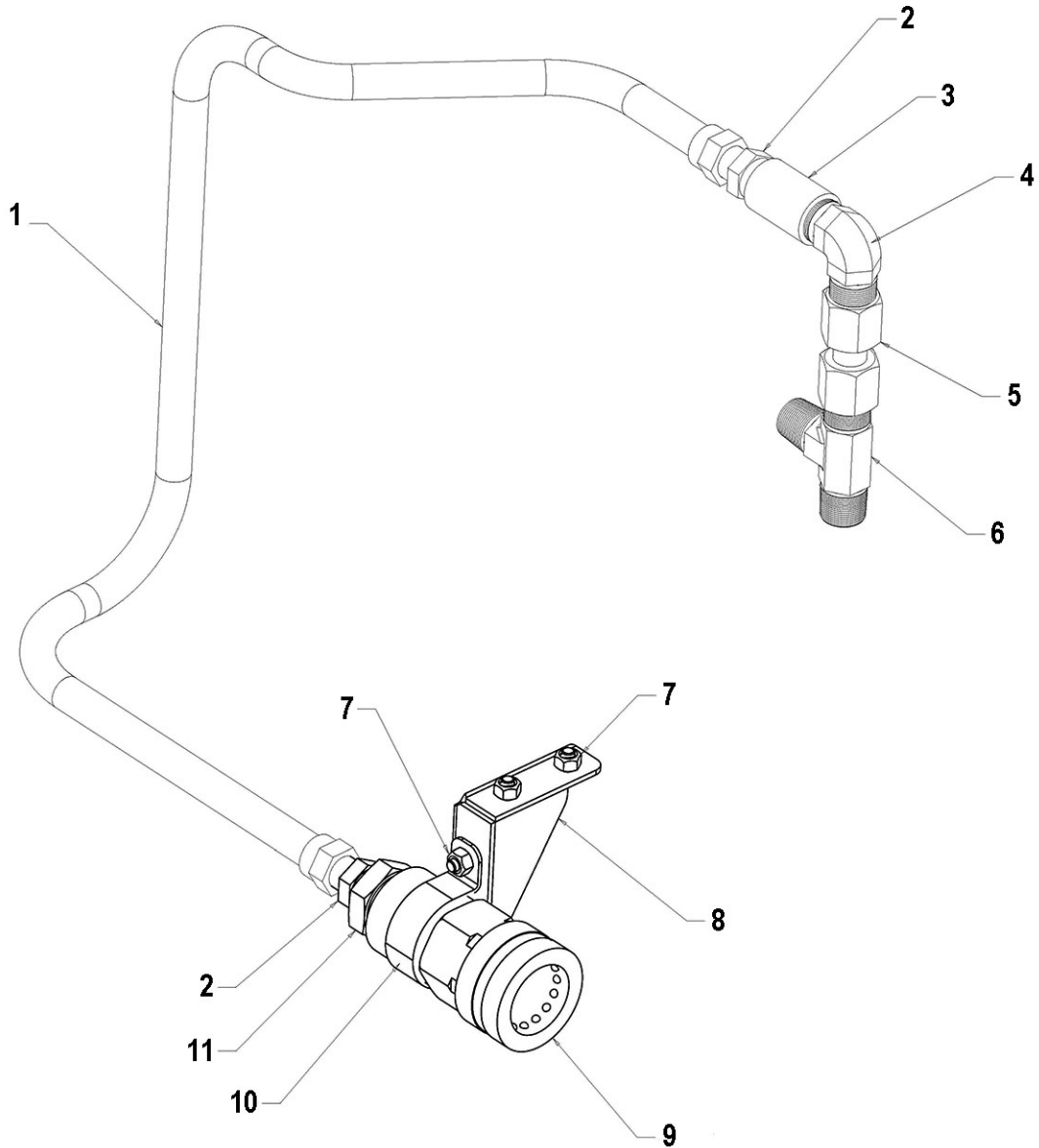
Recommend Parts: A=Truck Stock/B=Dist. Stock



Filter Motor and Pump

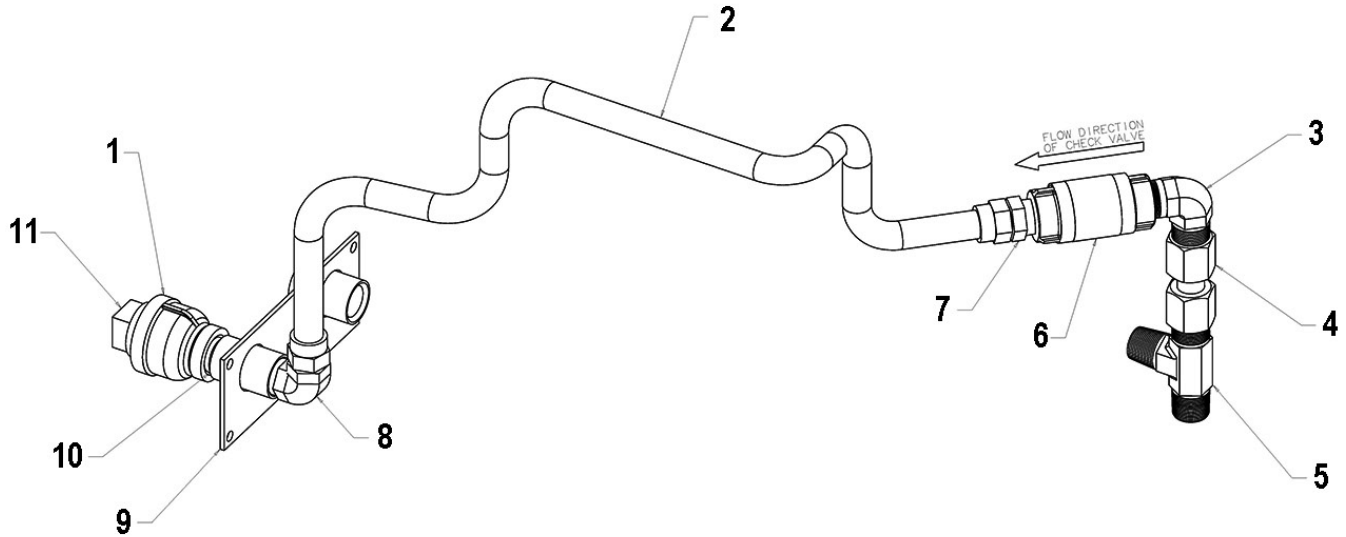
Item No.	Part No.	Description	Quantity
A 1	67583	MOTOR, 1/2 HP - 60 Hz	1
A 1	92850	MOTOR, 1/2 HP - 50 Hz - CE.....	1
A 2	17476	SEAL KIT	1
B 3	17437	PUMP ASSEMBLY	1
4	SC01-132	SCREW, Pump Cover	1
5	17451	COVER, Pump.....	1
B 6	17447	ROTOR, Pump.....	1
A 7	17446	ROLLER, Pump.....	5
A 8	17453	O-RING.....	1
9	17454	BODY, Pump	1
10	SC01-026	SCREW, Pump Shield.....	1
11	17456	SHIELD, Pump.....	2

Recommend Parts: A=Truck Stock/B=Dist. Stock



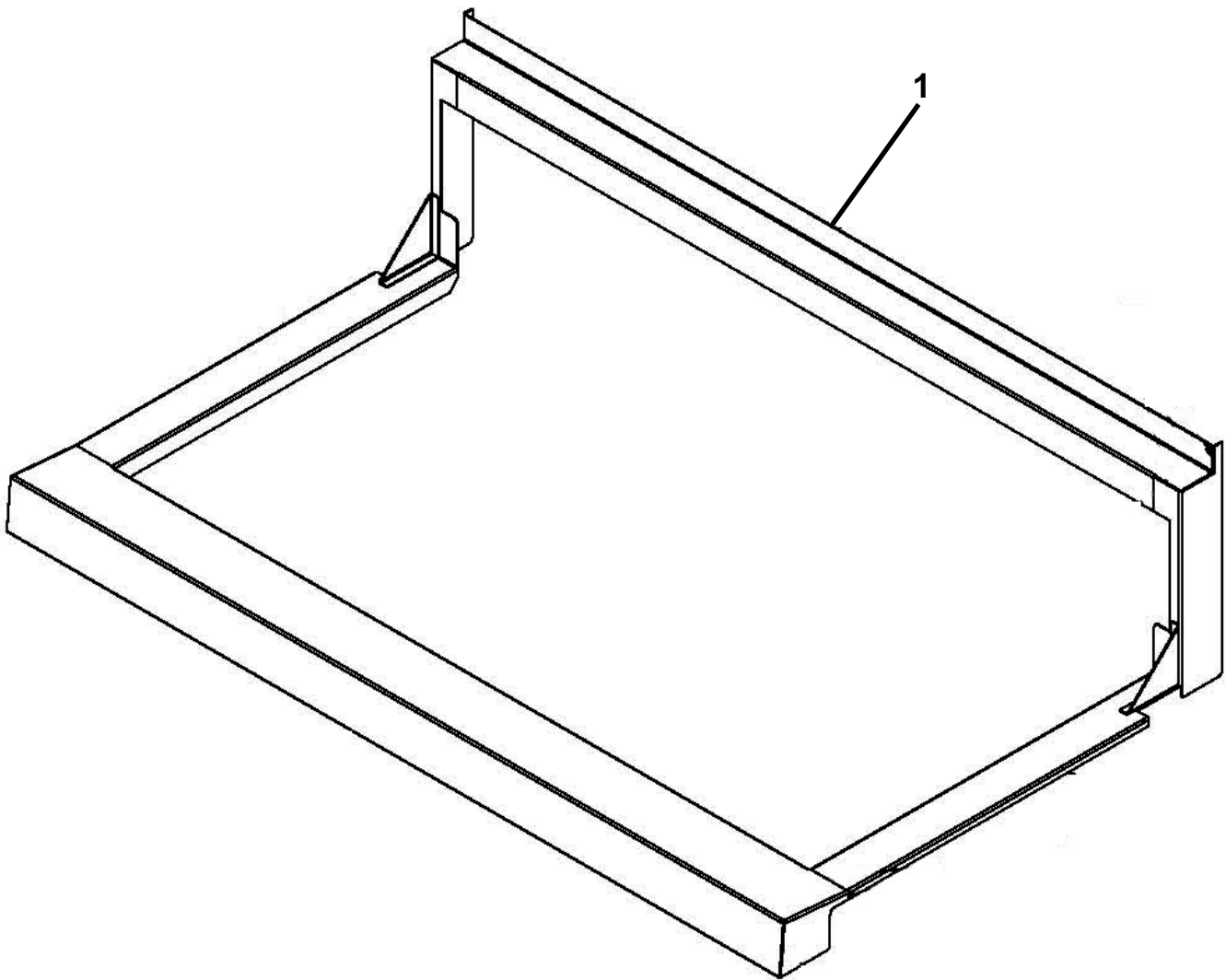
Oil Disposal Plumbing-France

Item No.	Part No.	Description	Quantity
1	77523-004	TUBE-SUCTION-30IN-FLEXIBLE.....	1
2	FP01-242	FITTING-1/2 NPT M TO 45 FLARE M	2
3	FP01-066	COUPLING 1/2 NPT SS	1
4	17407	CONNECTOR 1/2 MAIL ELBOW	1
5	84288	ASSY-PLUG & PLAY (TO PUMP INLET).....	1
6	FP01-245	FITTING-PIPE BRANCH TEE-MALE.....	1
7	NS04-005	1/4-20 HEX NUT, LOCKING, ZINC.....	4
8	86685	STUD ASSY-FRENCH DRAIN MTG BRKT	1
9	80752	FITTING-QUICK COUPLE FEMALE	1
10	86690	CLAMP-DRAIN TUBE	1
11	FP01-241	FITTING-REDUCER-1 NPT M X 1/2 NPT F.....	1



Oil Disposal Plumbing-Australia

Item No.	Part No.	Description	Quantity
1	FP01-217	COUPLE-REDUCE 1 F X 1/2F BI	1
2	77523-004	TUBE-SUCTION-30 IN-FLEXIBLE.....	1
3	17407	CONNECTOR 1/2 MAIL ELBOW	1
4	84288	ASSY-PLUG & PLAY (TO PUMP INLET).....	1
5	FP01-245	FITTING-PIPE BRANCH TEE-MALE.....	1
6	74469	VALVE-1/2 CHECK.....	1
7	FP01-242	FITTING-1/2 NPT M TO 45 FLARE M	1
8	FP01-205	ELBOW-1/2 IN NPT MALE 45 FLARE	1
9	85701	WELD ASSY-RTI OIL CONNECTION	1
10	FP01-023	NIPPLE - 1/2 INCH CLOSE BLACK	1
11	FP01-218	PLUG-1 PIPE-BI	1



Fry Cap

Item No.	Part No.	Description	Quantity
1	03618	ACCESSORY-FRY CAP - LVE-202	1
1	03619	ACCESSORY-FRY CAP - LVE-203	1
1	03620	ACCESSORY-FRY CAP - LVE-204	1