



OPERATOR'S M A N U A L

OIL DISPOSAL SHUTTLE

MODEL

ODS-400



HENNY PENNY
Engineered to Last

REGISTER WARRANTY ONLINE AT WWW.HENNYPENNY.COM

TABLE OF CONTENTS

Section	Page
Section 1. SAFETY	1-1
Section 2. ASSEMBLY	2-1
Section 3. OPERATION WITH EVOLUTION ELITE OPEN FRYERS.....	3-1
Section 4. OPERATION WITH 500 & 600 PRESSURE FRYERS	4-1
Section 5. DISPOSING OF OIL INTO DISPOSAL CONTAINER	5-1
Section 6. PART INFORMATION	6-1
6-1. Introduction.....	6-1
6-2. Genuine Parts	6-1
6-3. How to Order	6-1
6-4. Prices.....	6-1
6-5. Delivery.....	6-1
6-6. Warranty	6-1
6-7. Recommended Spare Parts for Distributors.....	6-1

SECTION 1. SAFETY

Where information is of particular importance or is safety related, the words NOTICE, CAUTION, or WARNING are used. Their usage is described below:



SAFETY ALERT SYMBOL is used with DANGER, WARNING, or CAUTION which indicates a personal injury type hazard.

NOTICE

NOTICE is used to highlight especially important information.

CAUTION

CAUTION used without the safety alert symbol indicates a potentially hazardous situation which, if not avoided, may result in property damage.



CAUTION used with the safety alert symbol indicates a potentially hazardous situation which, if not avoided, may result in minor or moderate injury.



WARNING indicates a potentially hazardous situation which, if not avoided, could result in death or serious injury.

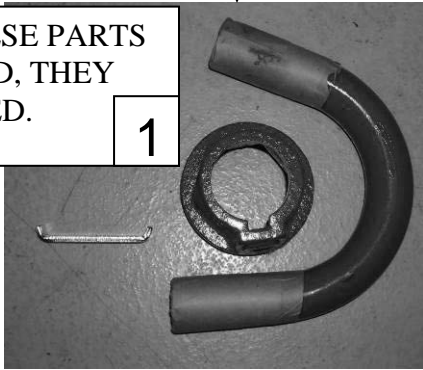


DANGER INDICATES AN IMMINENTLY HAZARDOUS SITUATION WHICH, IF NOT AVOIDED, WILL RESULT IN DEATH OR SERIOUS INJURY.

SECTION 2. ASSEMBLY



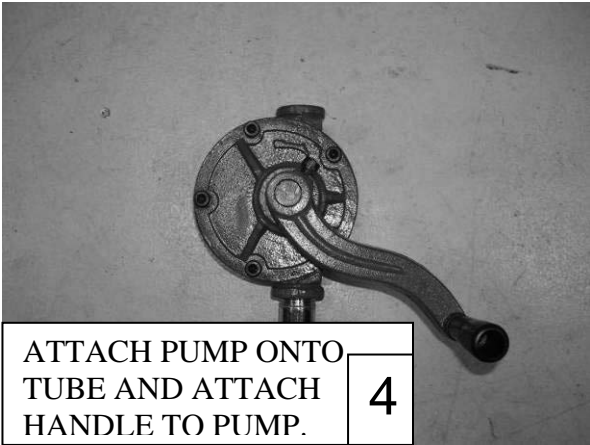
REMOVE THESE PARTS AND DISCARD, THEY ARE NOT USED. **1**



USING BOLTS & NUTS PROVIDED, ATTACH HANDLE TO SHUTTLE. **2**



CLEAN THREADS (EX: LAQUER THINNER & BRUSH) AND THEN APPLY TEFLON TAPE OR PIPE SEALANT TO PIPE CONNECTIONS **3**



ATTACH PUMP ONTO TUBE AND ATTACH HANDLE TO PUMP. **4**

SLIDE PUMP AND TUBE ASSEMBLY THROUGH SQUARE TUBES ON BRACKET AND ON TOP OF SHUTTLE AND SUCURE WITH THUMBSCREW. **5**

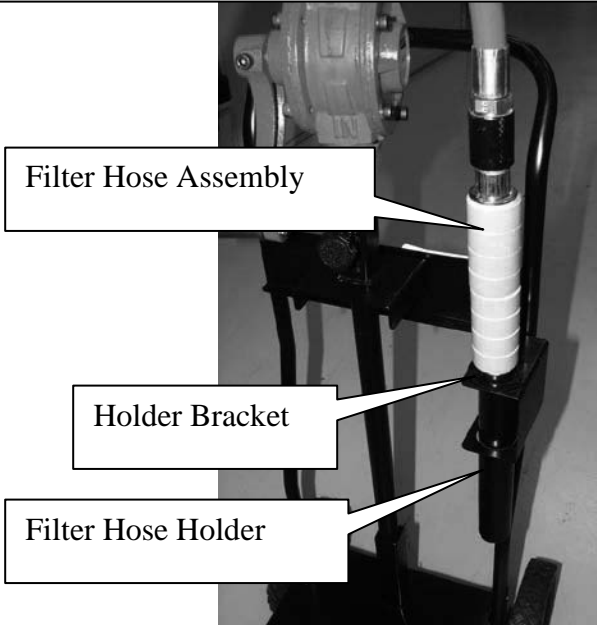




APPLY PIPE SEALANT OR TEFLON TAPE TO THREADS OF PIPE FITTING AND ATTACH HOSE ASSEMBLY TO TOP OF PUMP

6

LOCATE FILTER HOSE HOLDER AND SLIDE HOLDER INTO HOLDER BRACKET AND THEN SLIDE THE FILTER HOSE ASSEMBLY INTO HOLDER



HANG THE PRESSURE FRYER "FUNNEL" ON HANDLE

8



9

READY FOR USE



SECTION 3. OPERATION WITH EVOLUTION ELITE OPEN FRYERS



Figure 1



Figure 2



Figure 3

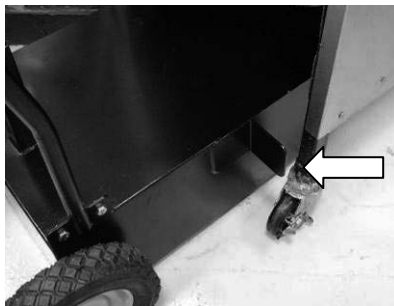


Figure 4

1. Open the door, lift-up on the drain pan stop and pull-out the drain pan assembly, using the handle on the drain pan. Figures 1 & 2.
2. Release cover latch, and hinge back cover on oil disposal shuttle. Figure 3. Make sure crumb catcher is in place.
3. Roll oil disposal shuttle under fryer until it stops. Make sure drain aligns with opening in shuttle. Figure 4.



TO AVOID PERSONAL INJURY, BURNS, SPILLS, AND CORROSION:

- **DO NOT OVERFILL. SHUTTLE HOLDS OIL FROM ONE FULLSIZE VAT OR TWO SPLIT VATS ONLY**
- **DO NOT PUT WATER AND/OR CLEANER IN THE SHUTTLE OIL ONLY**
- **DO NOT TRANSPORT OIL WITHOUT COVER IN PLACE**

4. Using the fryer controls, press and hold **F** (on either side) until display shows *FILTER MENU*, along with "1.EXPRESS FILTER".
5. Press and release **▶** twice until display shows "3.DISPOSE". Press **√** button and display shows "DISPOSE?" along with "YES NO"

6. With discard shuttle rolled into place, press √ button and display shows “OPEN DRAIN”. Pull-out on drain knob to open drain and display shows “DRAINING”. Oil now drains from the vat into the shuttle.

NOTICE

If oil disposal shuttle is not properly in place, “IS DISPOSAL UNIT IN PLACE?” shows in display. Adjust the bracket on the front of the shuttle as needed by loosening the 4 nuts securing the bracket and moving the bracket up or down. Once properly adjusted, the display shows “DRAINING”. Figure 5.



Figure 5

7. Display shows “VAT EMPTY”, along with “YES NO”. Verify that vat is empty, and press √ button.
8. Display shows “CLN VAT COMPLETE”, along with “YES NO”. Once vat is clean, press √ button and close drain.
9. Display shows “MANUAL FILL POT”, followed by “VAT FULL”, along with “YES NO”. Fill the vat to the lower indicator line on the rear of the vat and then press √ button. Controls return to normal operation.

SECTION 4. OPERATION WITH 500 & 600 PRESSURE FRYERS



Figure 1



Figure 2

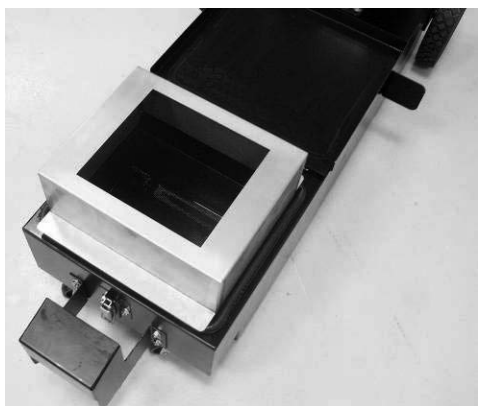


Figure 3

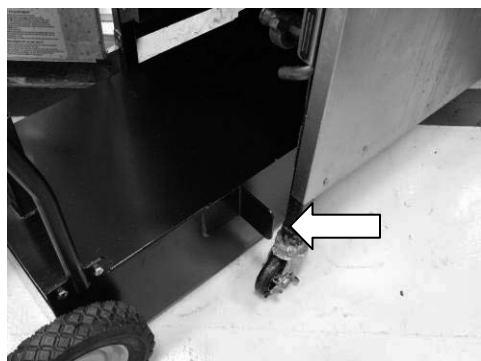


Figure 4

1. Move the fryer main power switch to the OFF position.
2. Remove and empty the condensation drain pan.
3. Disconnect the filter union and remove the drain pan from under the frypot.



The filter union could be hot! Use protective cloth or glove, or severe burns could result.

4. Release cover latch, and hinge back cover on oil disposal shuttle. Figure 2. Make sure crumb catcher is in place.
5. Using the “funnel” on the back of the handle, place it over the opening of the shuttle. Figure 3.
6. Roll oil disposal shuttle under fryer until the stop brackets on both sides of the shuttle contacts the frame. Figure 4. This assures drain aligns with opening in shuttle.



TO AVOID PERSONAL INJURY, BURNS, SPILLS, AND CORROSION:

- **DO NOT OVERFILL. SHUTTLE HOLDS OIL FROM ONE FULLSIZE VAT OR TWO SPLIT VATS ONLY**
- **DO NOT PUT WATER AND/OR CLEANER IN THE SHUTTLE OIL ONLY**
- **DO NOT TRANSPORT OIL WITHOUT COVER IN PLACE**

7. Turn drain handle and drain oil into shuttle.

SECTION 5. DISPOSING OF OIL INTO DISPOSAL CONTAINER

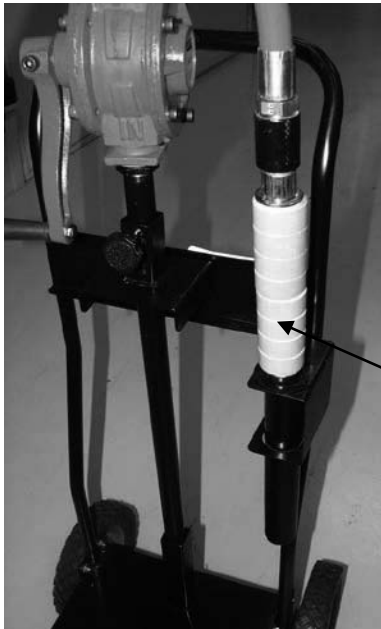


Figure 1

1. Remove the oil disposal shuttle from under fryer and replace with the filter pan assembly.
2. Close and latch the cover and roll oil disposal shuttle to disposal container.
3. Grasp the wooden handle and remove the hose assembly from the holder. Figure 1.



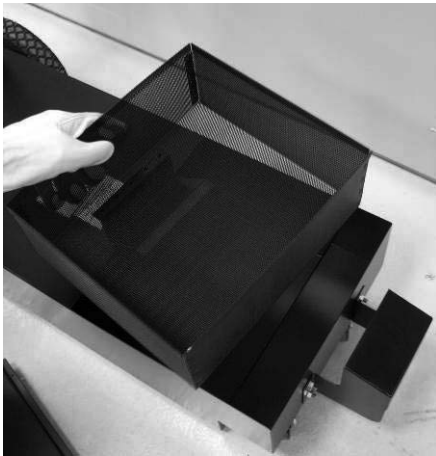
Figure 2

4. Make sure the hose nozzle is pointed into the disposal container and turn pump handle rapidly (fast) in order to prime the pump and to get oil to flow through pump.



Use care to prevent burns caused by splashing of hot shortening.

5. Once shuttle is empty, return the hose assembly to the holder. Figure 2.



CLEANING

Daily, remove the crumb catcher (Figure 6) and take it to a sink and clean with soap and water. Clean the exterior of the shuttle with a soft cloth and soap and water. It's not necessary to clean the interior of the unit, but if desired, it can be wiped down with paper towels.

CAUTION

To avoid damage to pump, do not use water or water-based liquids to clean the interior of the shuttle.

SECTION 6. PARTS INFORMATION

6-1. INTRODUCTION

This section identifies and lists the replaceable parts of the Henny Penny Oil Disposal Shuttle.

6-2. GENUINE PARTS

Use only genuine Henny Penny parts in your unit. Using a part of lesser quality or substitute design may result in unit damage or personal injury.

6-3. HOW TO FIND PARTS

To find items you want to order from the Parts List, proceed as follows:

1. Refer to the exploded drawing in this section to identify the part needed.
2. Use the item number from the exploded drawing to locate the corresponding part in the parts list in this section. In this list will be the Henny Penny part number and description of the part.

6-4. HOW TO ORDER PARTS

Once the part you want to order has been found in the Part List, write down the following information:

1. From the exploded drawing and Parts List (Sample)
Item Number 15
Part Number 77815
Description WHEEL – 8 INCH – ODS
2. From the data plate (Sample)
Serial Number 00100

6-5. PRICES

Your distributor has a price parts list and will be glad to inform you of the cost of your parts order.

6-6. DELIVERY

Commonly replaced items are stocked by your independent Henny Penny distributor and will be sent out when your order is received. Other parts will be ordered by the distributor from Henny Penny Corporation. Normally, these will be sent to your distributor within three working days.

6-7. WARRANTY

All replacement parts (except lamps and fuses) are covered under warranty for 90 days against manufacturing defects and workmanship. If damage occurs during shipping, notify the carrier at once so that a claim may be properly filed. Refer to the warranty in this manual for other rights and limitations.

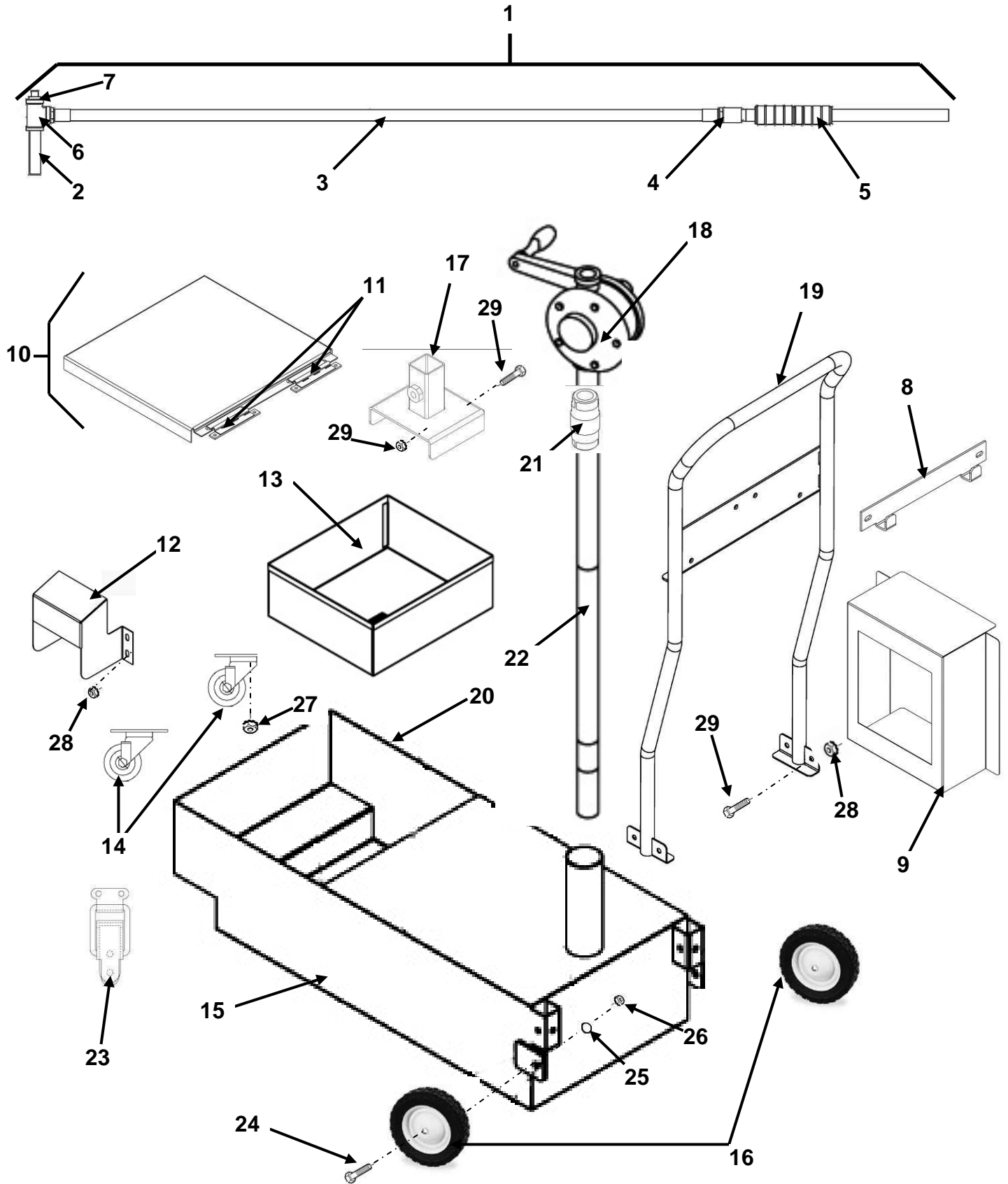
6-8. RECOMMENDED SPARE PARTS FOR DISTRIBUTORS

Recommended replacement parts are indicated with A or B in the parts lists:

A = parts to be stocked on service vans or trucks

B = parts to be stocked at the distributor/KES location.

Inventory on all other parts not identified, should be based upon usage in the territory. Please use care when ordering recommended parts, because all voltages and variations are marked. Distributors should order parts based upon common voltages and equipment sold in their territory.



Item Number	Part Number	Description	Qty	
B	1	91076	ASSY – FILTER HOSE ODS	1
	2	FP02-033	NIPPLE – ¾ NPT X 4 IN LG-BI	1
	3	21753	HOSE SHORTENING DISCARD	1
	4	FP01-221	¾ COUPLING HOSE	1
	5	91075	WELD ASSY - FILTER RINSE HOSE	1
	6	FP01-097	TEE – ¾ NPT FEMALE PIPE BI	1
	7	FP01-140	PLUG - ¾ PIPE BI	1
	8	91044	BRACKET – ODS FUNNEL HANGER	1
B	9	88746	FUNNEL – ODS – 500/600	1
	10	84001	ASSY -- COVER ODS DRAIN PAN DOLLY	1
	11	83993	HINGE	2
	11*	SC01-113	SCREW--#6-32 X 9/16 PHILLIPS, PAN HD	4
	11*	NS02-005	NUT--HEX--KEPS #6-32	4
	12	84519	BRACKET – DRAIN SW ENGAGEMENT LV	1
B	13	84453	BASKET – CRUMB	1
B	14	19004	CASTER 2” SWIVEL PLATE	2
	15	91073	WELD ASSY – ODS DRAIN PAN DOLLY	1
B	16	77815	WHEEL – 8 INCH – ODS	2
	17	84481	ASSY – WELD – PUMP TUBE BRACKET	1
	17*	SC06-76	THUMB SCREW - M8 X 25 MM	1
A	18	72490	PUMP – MANUAL OIL DISCARD	1
	19	84368	WELD ASSY – DOLLY HANDLE	1
B	20	84614	SEAL – COVER	1
A	21	21800	CHECK VALVE – ¾ IN	1
	22	84376-001	TUBE – ODS PICK-UP	1
A	23	MS01-532	LATCH	1
	23*	SC01-049	SCREW--#6-32 X 3/8 PHILLIPS, PAN HD	2
	23*	NS02-005	NUT--HEX--KEPS #6-32	2
	23*	83994	BRACKET-LATCH MOUNTING	1
	24	SC06-074	SCREW – ½ x 1-1/2 SHOULDER	2
	25	LW01-010	LOCKWASHER – SPLIT-RING 3/8 S	2
	26	NS01-001	NUT – HEX 3/8-16	2
	27	NS02-006	NUT – HEX – KEPS #10-24 C	23
	28	NS02-002	NUT – HEX – KEPS 1/4-20 C	4
	29	SC01-057	SCREW – ¼-20 x ½ HEX HD C	4

Recommend Parts: A=Truck Stock/B=Dist. Stock

*not shown



Henny Penny Corporation
P.O.Box 60
Eaton, OH 45320

1-937-456-8400
1-937-456-8402 Fax

Toll free in USA
1-800-417-8417
1-800-417-8434 Fax

www.hennypenny.com

FM05 - 064 - D Henny Penny Corp., Eaton, Ohio 45320, Revised 6-25-13