

## SECTION 3. PARTS INFORMATION

### **3-1. INTRODUCTION**

This section lists the replaceable parts of the Henny Penny Model OFG-391.

### **3-2. GENUINE PARTS**

Use only genuine Henny Penny parts in your fryer. Using a part of lesser quality or substitute design may result in damage to the unit or personal injury.

### **3-3. WHEN ORDERING PARTS**

Once the parts that you want to order have been found in the parts list, write down the following information:

Item Number	<u>2</u>	Example:
Part Number	<u>16738</u>	
Description	<u>High Limit</u>	

From the data plate, list the following information:

Product Number	<u>01100</u>	Example:
Serial Number	<u>0001</u>	
Voltage	<u>120</u>	

### **3-4. PRICES**

Your distributor has a price parts list and will be glad to inform you of the cost of your parts order.

### **3-5. DELIVERY**

Commonly replaced items are stocked by your distributor and will be sent out when your order is received. Other parts will be ordered, by your distributor, from Henny Penny Corporation. Normally, these will be sent to your distributor within three working days.

### **3-6. WARRANTY**

All replacement parts (except lamps and fuses) are warranted for 90 days against manufacturing defects and workmanship. If damage occurs during shipping, notify the carrier at once so that a claim may be properly filed. Refer to warranty in the front of this manual for other rights and limitations.

### **3-7. RECOMMENDED SPARE PARTS FOR DISTRIBUTORS**

Recommended replacement parts, stocked by your distributor, are indicated with √ in the parts lists. Please use care when ordering recommended parts, because all voltages and variations are marked. Distributors should order parts based upon common voltages and equipment sold in their territory.

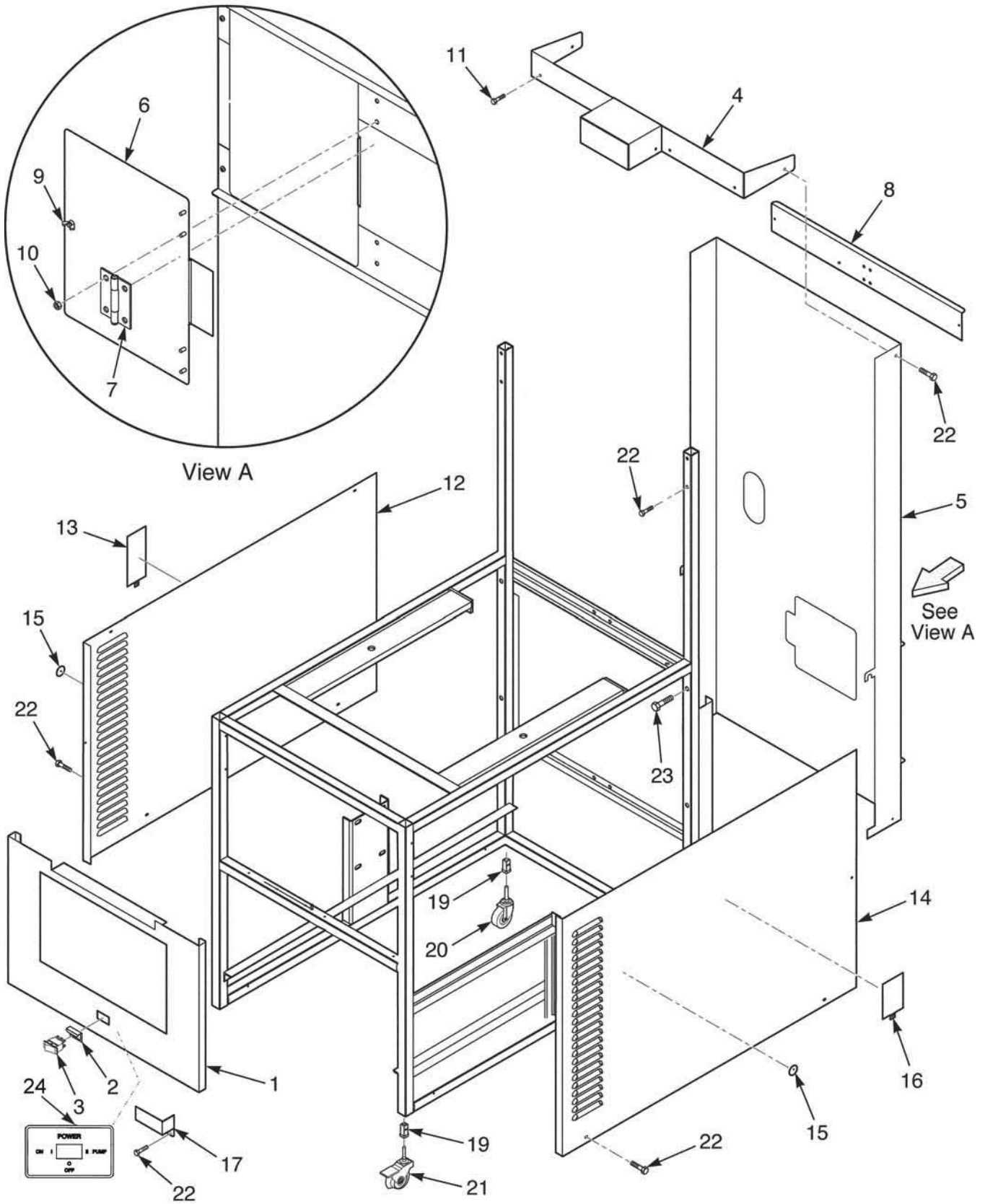


Figure 3-1. Frame and Cover Assembly

Figure & Item No.	Part No.	Description	Qty.
3-1		FRAME & COVER ASSEMBLY	
1	39796	WELDMENT – CONTROL PANEL FRONT .....	1
2	53669	GUARD – POWER SWITCH .....	1
√ 3	29898	SWITCH – POWER .....	1
4	55608	TOP COVER – REAR SHROUD .....	1
5	58261	REAR SHROUD – ACCESS ASSEMBLY .....	1
6	58258	. ACCESS COVER – STUD ASSEMBLY .....	1
7	58256	. HINGE – 2" LEAF HT .....	2
8	62056	. BRACE – REAR SHROUD .....	2
9	NS03-033	. NUT, WING – SS 10-24 .....	1
10	NS03-002	. NUT, ACORN #10-24 .....	8
11	SC03-005	. SCREW SD #8 X 1/2 PH PHD .....	4
12	66940	PANEL – SIDE LH .....	1
13	36337	DOOR – ACCESS .....	1
14	66941	PANEL – SIDE RH .....	1
15	52204	COVER – PILOT VIEW .....	2
16	35179	COVER – ACCESS COVER .....	1
17	51741	COVER, GAS VALVE WIRE .....	1
19	54225	1" INSERT – LEG MACHINED .....	4
20	53673	CASTER, SWIVEL 4" .....	2
21	37246	CASTER W/BRAKE & SWIVEL LOCK .....	2
22	SC03-005	SCREW .....	8
23	SC01-215	SCREW .....	4
24	54921	LABEL - POWER/PUMP .....	1

√ recommended parts

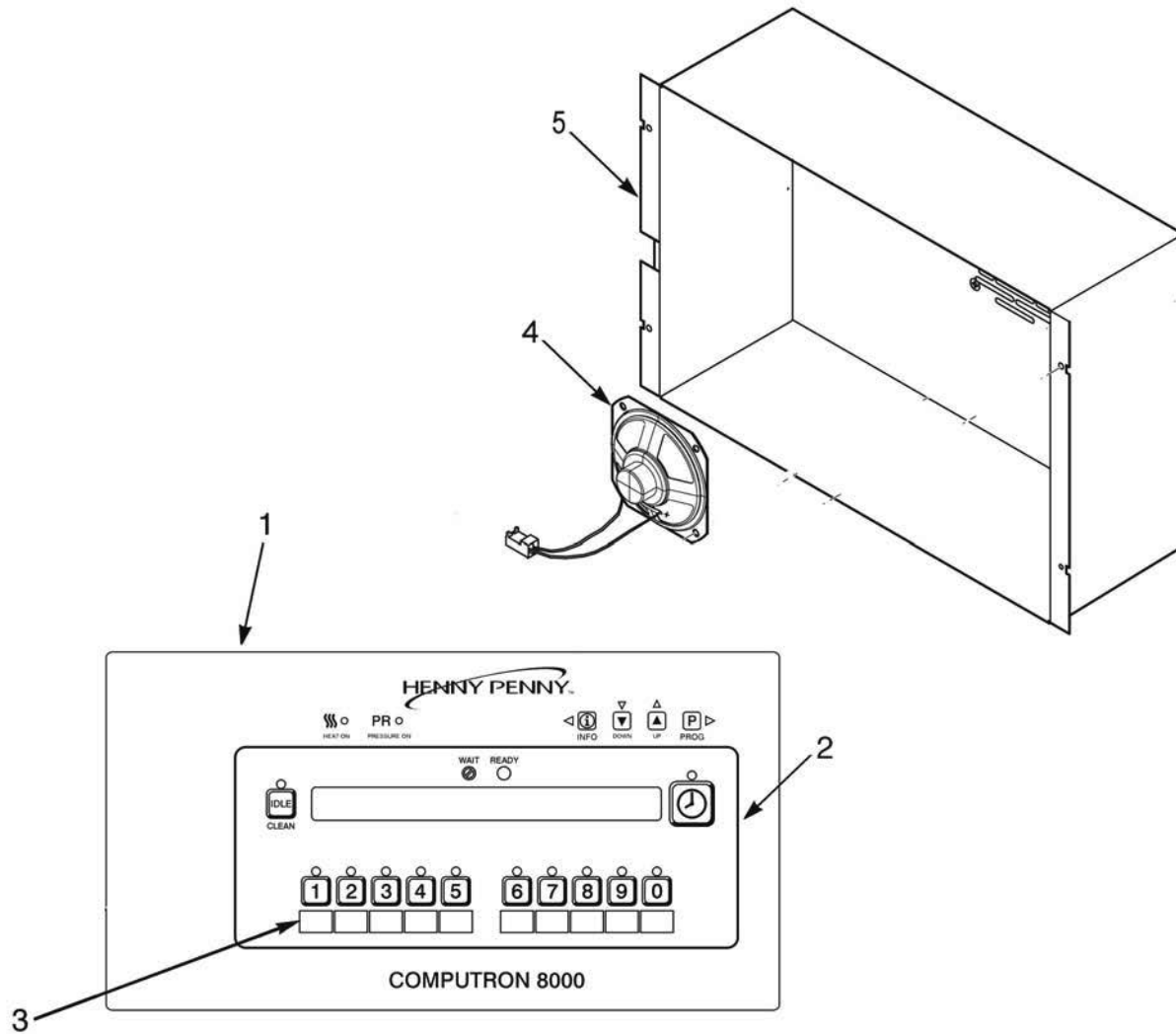


Figure & Item No.	Part No.	Description	Qty.
3-2		CONTROL PANEL ASSEMBLY	
√ 1	65279RB	ASSY - 8 HEAD C8000 CONTROL .....	1
2	65236	DECAL - 8 HEAD C8000 .....	1
3	32634	MENU CARD C8000 BLANK .....	1
3	65922	MENU CARD C8000 8-HD HP GM .....	1
√ 4	26974	WIRE/SPEAKER ASSY .....	1
5	65661	STUD ASSY-8-HEAD-C8000- COVER .....	1
6*	65893RB	ASSY - I/O BOARD .....	1

√ recommended parts

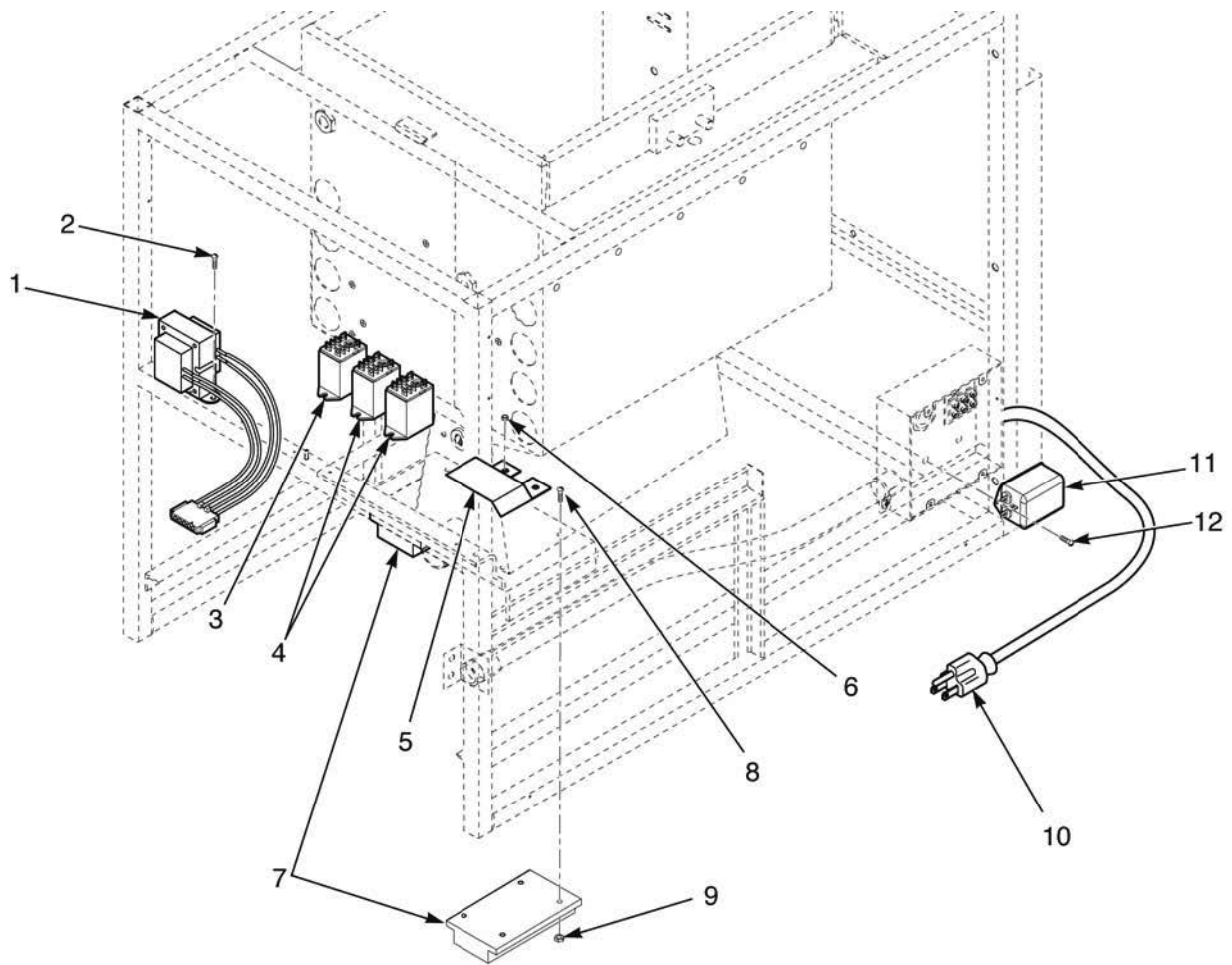


Figure & Item No.	Part No.	Description	Qty.
3-3		ELECTRICAL CONTROLS	
√ 1	29571	TRANSFORMER ASSY - 10/24V .....	1
2	SC03-005	SCREW .....	2
√ 3	140012	KIT - RELAY - 120V - SN: BT0903002 & Below .....	1
√ 3	81914	RELAY - 120V - SN: BT0903003 & Above .....	1
√ 3	56394	Power Relay-240V .....	1
√ 4	60818	Relay - 24V-10A .....	2
5	62053	SHIELD - WIRE - RH BURNER NON CE .....	1
6	NS02-005	NUT .....	2
√ 7	21347	IGNITION MODULE .....	2
√ 7	54924	IGNITION MODULE - CE .....	2
8	SC01-214	SCREW #10-32 X 1 PH THD SS .....	4
9	NS02-001	NUT HEX KEPS #10-32 C .....	4
10	53656	POWER CORD - 120V .....	1
√ 11	54988	FILTER - 220V - 50/60HZ 6ACE .....	1
12	SC01-006	SCREW #10-32 X 3/8 PH THD C .....	2

√ recommended parts

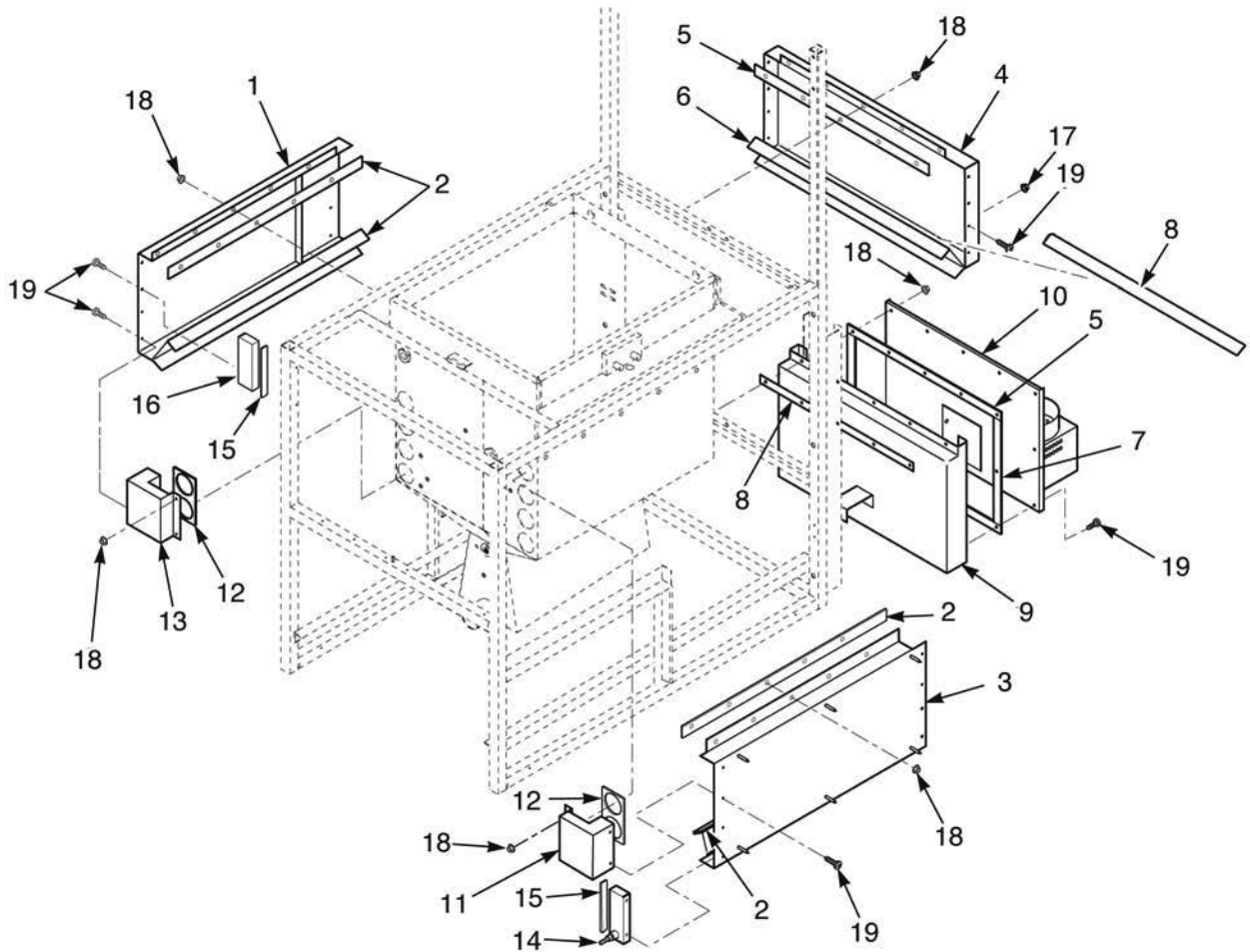


Figure & Item No.	Part No.	Description	Qty.
3-4		FRYPOT COVERS AND INSULATION	
1	52799	ASSY-INSUL/LFT. C/CHAMBER .....	1
2	52041	INSULATION-C/CHAMBER MOUNTIN .....	4
3	52798	ASSY-INSUL/RT. C/CHAMBER .....	1
4	52800	ASSY-INSUL/REAR C/CHAMBER .....	1
5	52038	INSULATION-LOWER CHAMBER DUC .....	3
6	52040	INSULATION-REAR C/CHAMBER .....	1
7	51897	INSULATION-LOWER CHAMBER COV .....	2
8	52039	INSULATION-C/CHAMBER COLLAR .....	1
9	52120	ASSY-LOWER C/CHAMBER DUCT .....	1
10	52801	ASSY-INSUL/CHAMBER COVER .....	1
11	52795	ASSY INSUL/TUBE-CHAMBER RT. ....	1
12	52792	INSULATION-TUBE TO C/CHAMBER .....	2
13	52794	ASSY-INSUL/TUBE-CHAMBER LFT. ....	1
14	52797	ASSY-INSUL/LOWER CHAMBER CAP .....	1
15	52793	INSULATION - C/CHAMBER CAP .....	2
16	52796	ASSY-INSUL/UPPER CHAMBER CAP .....	1
17	NS02-005	NUT HEX KEPS #6-32C .....	5
18	NS02-006	NUT HEX KEPS #10-24C .....	34
19	SC02-014	SCREW #8 AB X 3/8 PH #400SS .....	27

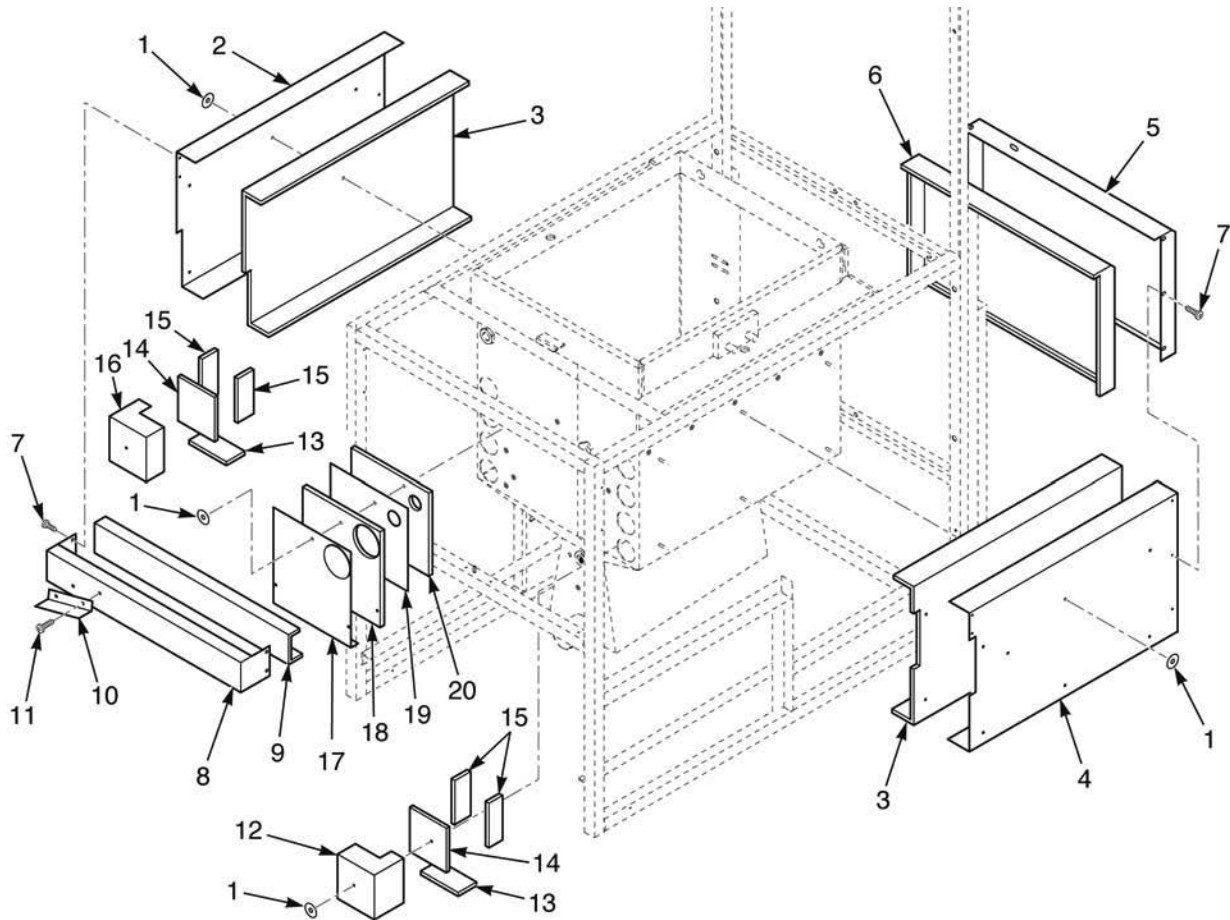


Figure & Item No.	Part No.	Description	Qty.
3-5		INSULATION COVERS	
1	WA02-001	WASHER – INSULATION 1-1/2” DIA. ....	17
2	51763	INSULATION COVER – LEFT .....	1
3	51892	INSULATION – C/CHAMBER SIDE .....	2
4	51765	INSULATION COVER – RIGHT .....	1
5	51759	INSULATION COVER – REAR .....	1
6	51893	INSULATION – REAR C/CHAMBER .....	1
7	SC02-014	SCREW #8-AB X 3/8 PH #400SS .....	10
8	51739	TOP FRONT INSULATION PANEL .....	1
9	51894	INSULATION – TOP FRONT PANEL .....	1
10	62060	SHIELD – HIGH LIMIT .....	1
11	SC03-005	SCREW SD #8 X 1/2 PH PHD .....	2
12	51753	INSULATION COVER – TUBE TRAN RH .....	1
13	53661	INSUL. – TUBE/CHAMBER-SIDE .....	4
14	53662	INSUL – TUBE/CHAMBER-BOTTOM .....	2
15	53660	INSUL. – TUBE/CHAMBER-BACK .....	2
16	51755	INSULATION COVER – TUBE TRANS .....	1
17	51821	CONTROL INSULATION COVER LH .....	1
18	53659	INSULATION – POT FRONT (FOIL) .....	1
19	51806	POT FRONT INSULATION COVER .....	1
20	53658	INSULATION – POT FRONT .....	1

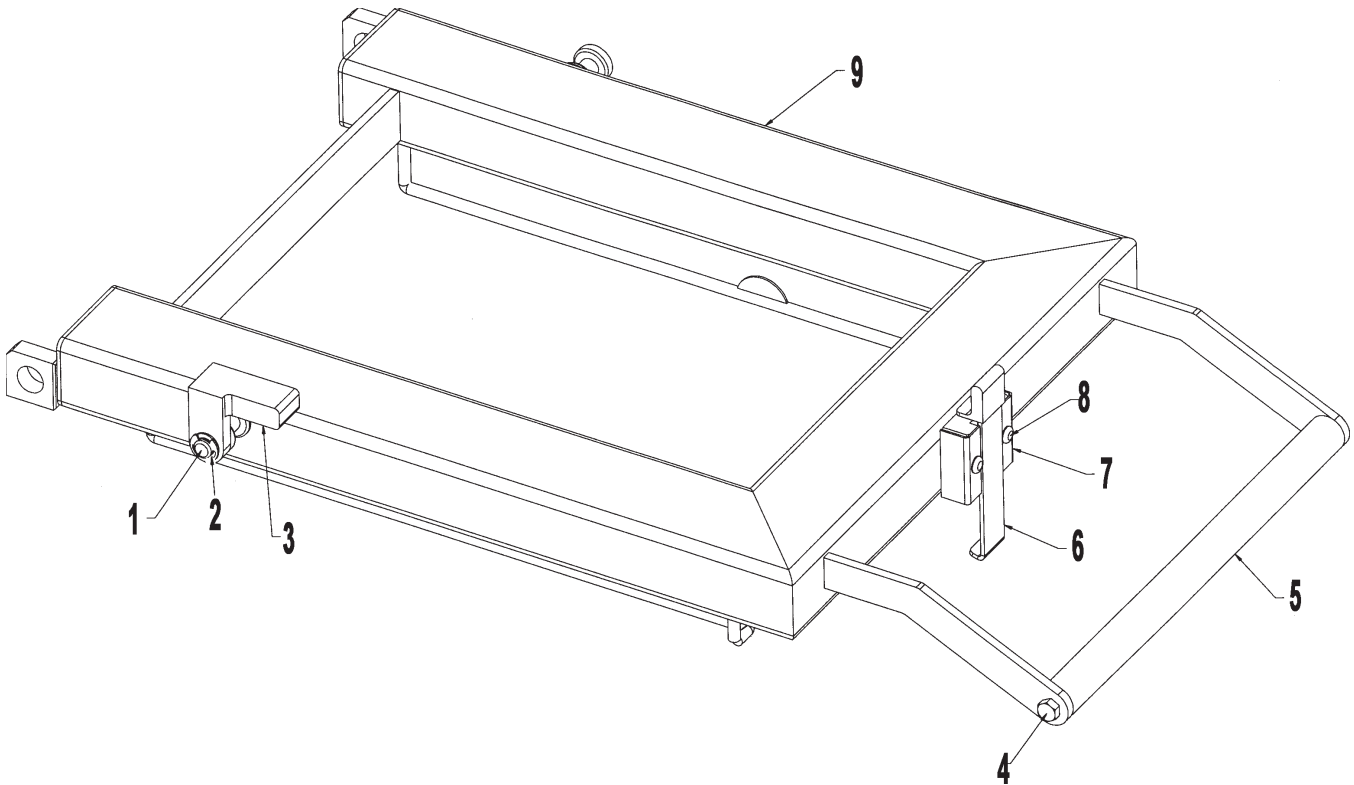


Figure & Item No.	Part No.	Description	Qty.
3-6	65191	Lid Assembly Complete	
1	RR01-004	Ring - Retaining - 1/2 in.	1
2	WA01-020	Washer - .513 ID-.750 OD-.05 THK	1
3	51531	Stop - Lid, Cast	1
4	SC01-041	Screw - 5/16"-18 x 1 HEX HD C	2
5	55754	Handle Weld Assembly	1
6	55756	Assy. - Latch/Sleeve Coat	1
7	59169	Lid Latch Bracket	1
7a	52498	Spring - Lid Latch	1
7b	51707	Lid Latch Bracket	1
8	SC01-248	Screw 10-32 x 1.25 PH THD SS	2
9	65190	Weldment 390 Lid	1





Figure & Item No.	Part No.	Description	Qty.
3-7		DRAIN PAN AND FILTER ASSEMBLY	
1	52194	CRUMB CATCHER (OPTIONAL) .....	1
2	03204	CRUMB CATCHER BASKET W/HANDLE (OPTIONAL) ....	1
2	21010	. CRUMB CATCHER BASKET ASSEMBLY .....	1
2	24429	. HANDLE - CRUMB BASKET .....	1
3	52496	FILTER DRAIN PAN ASSEMBLY .....	1
4	52487	. CASTER .....	2
5	SC01-009	. SCREW 1/4-20 X 1/2 .....	8
6	NS02-002	. NUT 1/4-20 .....	8
7	17505	FILTER CLIPS .....	2
8	17503(use 14671)	BOTTOM FILTER SCREEN (SN: KH031JJ AND BELOW) ....	1
8	17503(use 14674)	BOTTOM FILTER SCREEN (SN: KH032JJ TO BT0504001) ...	1
8	65447	BOTTOM FILTER SCREEN (SN: BT0504001 AND ABOVE) ..	1
9	17502(use 14671)	TOP FILTER SCREEN (SN: KH031JJ AND BELOW) .....	1
9	17502(use 14674)	TOP FILTER SCREEN (SN: KH032JJ AND ABOVE) .....	1
10	36305	WASHER & STANDPIPE .....	1
11	55876	STANDPIPE ASSEMBLY (S/N KH031JJ & BELOW) .....	1
11	62081	STANDPIPE ASSEMBLY (S/N KH032JJ to AH085JB) .....	1
11	24212	STANDPIPE ASSEMBLY (S/N AH086JB to BT0504001) .....	1
11	14658	STANDPIPE ASSEMBLY (S/N BT0504001 & ABOVE) .....	1
√ 12	USE 69289	. UNION - MALE FITTING .....	1
√ 13	USE 69289	. UNION - HANDLE FITTING .....	1
14	24211	. WELDMENT, FILTER TUBE AND WASHER .....	1
15	23740	. HANDLE, STANDPIPE 8 HEAD .....	1
16	SC01-245	. SCREW 10-32 X 1/2 .....	3
17	23804	. INSERT, FILTER NUT .....	1
18	OR01-007	. O-RING, FILTER NUT INSERT .....	1
19	55877	. FILTER NUT (S/N KH031JJ & LOWER) .....	1
19	65208	. FILTER NUT (S/N KH032JJ to AH085JB) .....	1
19	23803	. FILTER NUT (S/N AH086JB to BT0504001) .....	1
19	66535	. FILTER NUT - SS (SN: BT0504001 AND ABOVE) .....	1
20	62082	FILTER DRAIN PAN COVER ASSEMBLY .....	1
√ 21	12102	FILTER ENVELOPE PAPER (100 PER CARTON) .....	1
22	52209	ROD - CLEAN OUT .....	1
√ 23	52208	BRUSH .....	1
24	35310	STIRRER .....	1
√ 25	12126	BLACK L-BRUSH .....	1
26	65211	CRUMB CATCHER - SS .....	1

√ recommended parts

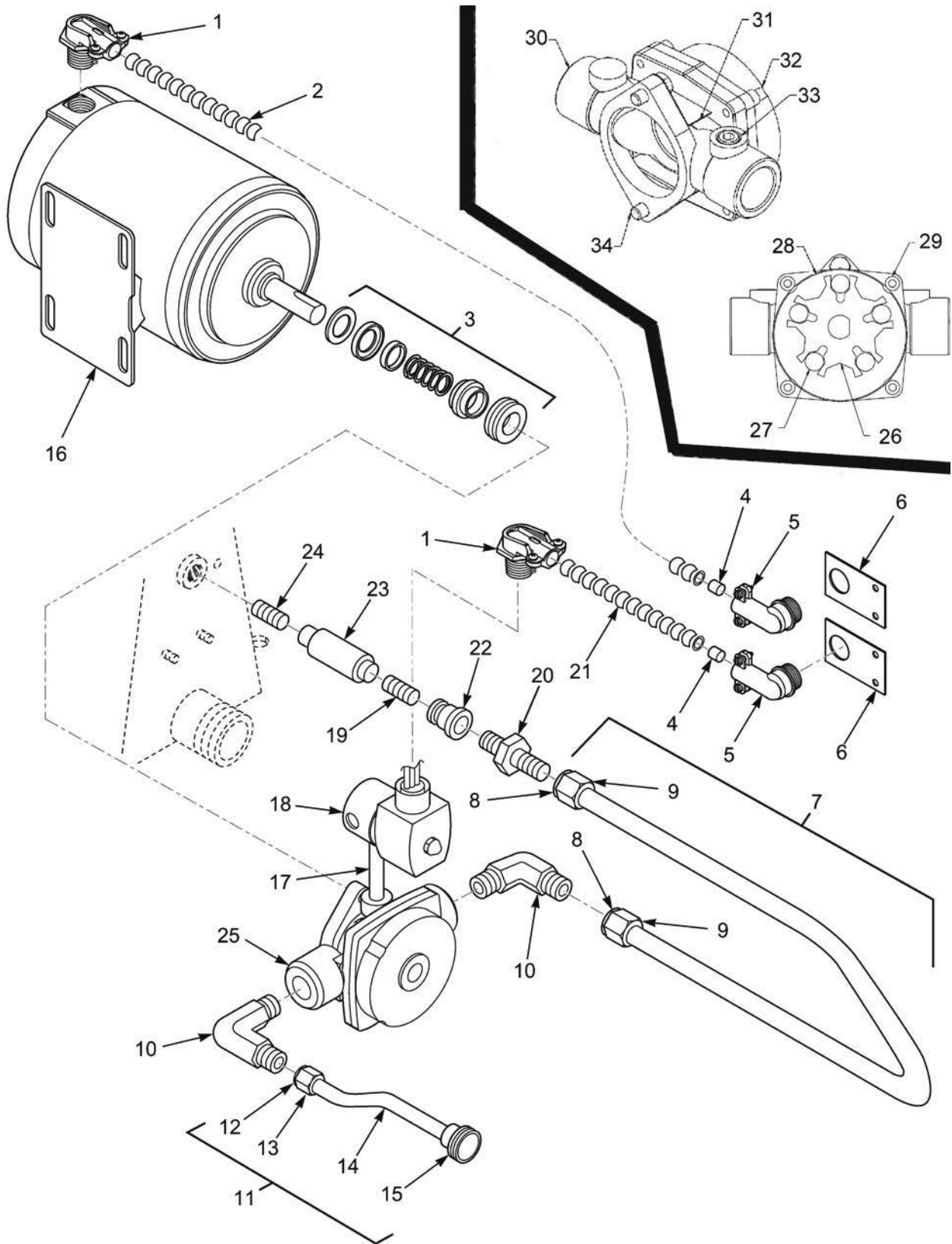


Figure 3-8A. Filter Pump Assembly (SN: LH015JC and below)

Figure & Item No.	Part No.	Description	Qty.
3-8A		FILTER PUMP ASSEMBLY (SN: LH015JC and below)	
1	18107	CONDUIT CONNECTOR 3/8 X 90 .....	2
2	54484	BLOWER/PUMP - FLEXIBLE CONDUIT .....	1
√ 3	17476	PUMP SEAL KIT .....	1
4	18105	ANTI SHORT 3/8 INCH .....	2
5	18644	CONDUIT CONNECTOR 3/8 X 90 .....	2
6	51831	PUMP CONDUIT BRACKET .....	2
7	55757	ASSY - OIL RETURN LINE .....	1
8	16808	SLEEVE, FITTING .....	2
9	16809	NUT, FITTING .....	2
10	17407	CONNECTOR, 1/2 MALE ELBOW .....	2
11	24225	TUBE ASSY - DISCON. TO PUMP .....	1
12	66676	ASSY - TUBING, DISCONNECT TO PUMP .....	1
13	16809	NUT, FITTING .....	1
14	16808	SLEEVE, FITTING .....	1
√ 15	17430(use 69289)	UNION, MALE FITTING .....	1
√ 16	67583	MOTOR - 1/2 HP FILTER PUMP .....	1
17	62050	NIPPLE 1/4 NPT X 2.0 .....	1
√ 18	52125	AIR-SOLENOID VALVE 120V .....	1
√ 18	54908	AIR-SOLENOID VALVE 240V .....	1
19	FP02-024	NIPPLE 3/8 CLOSE .....	1
20	16807	FITTING, CONNECTOR, MALE .....	1
21	54486	AIR VALVE - FLEXIBLE CONDUIT .....	1
22	FP01-122	REDUCER 3/8 TO 1/2 .....	1
23	35472	CHECK VALVE - PRESSURE .....	1
24	FP02-007	NIPPLE 3/8 X 1-1/2 .....	1
25	17437	PUMP SUBASSY 5 GPM .....	1
√ 26	17447	ROTOR - PUMP .....	1
√ 27	17446	ROLLER - TEFLON SET .....	1
√ 28	17453	PUMP O RING GASKET .....	1
√ 29	SC01-132	1/4-20 X 5/8 SOC HD CAP SCREW .....	4
√ 30	17454	BODY - PUMP .....	1
√ 31	17456	PUMP SHIELD .....	2
√ 32	17451	COVER - PUMP .....	1
√ 33	SC01-016	PLUG 1/4 HEX COUNTERSUNK .....	1
√ 34	SC01-026	SCREW 5/16-18 X 3/4 HEX HDC .....	2
35*	14675	KIT, 1/2" PUMP AND MOTOR .....	1

√ recommended parts

\* not shown

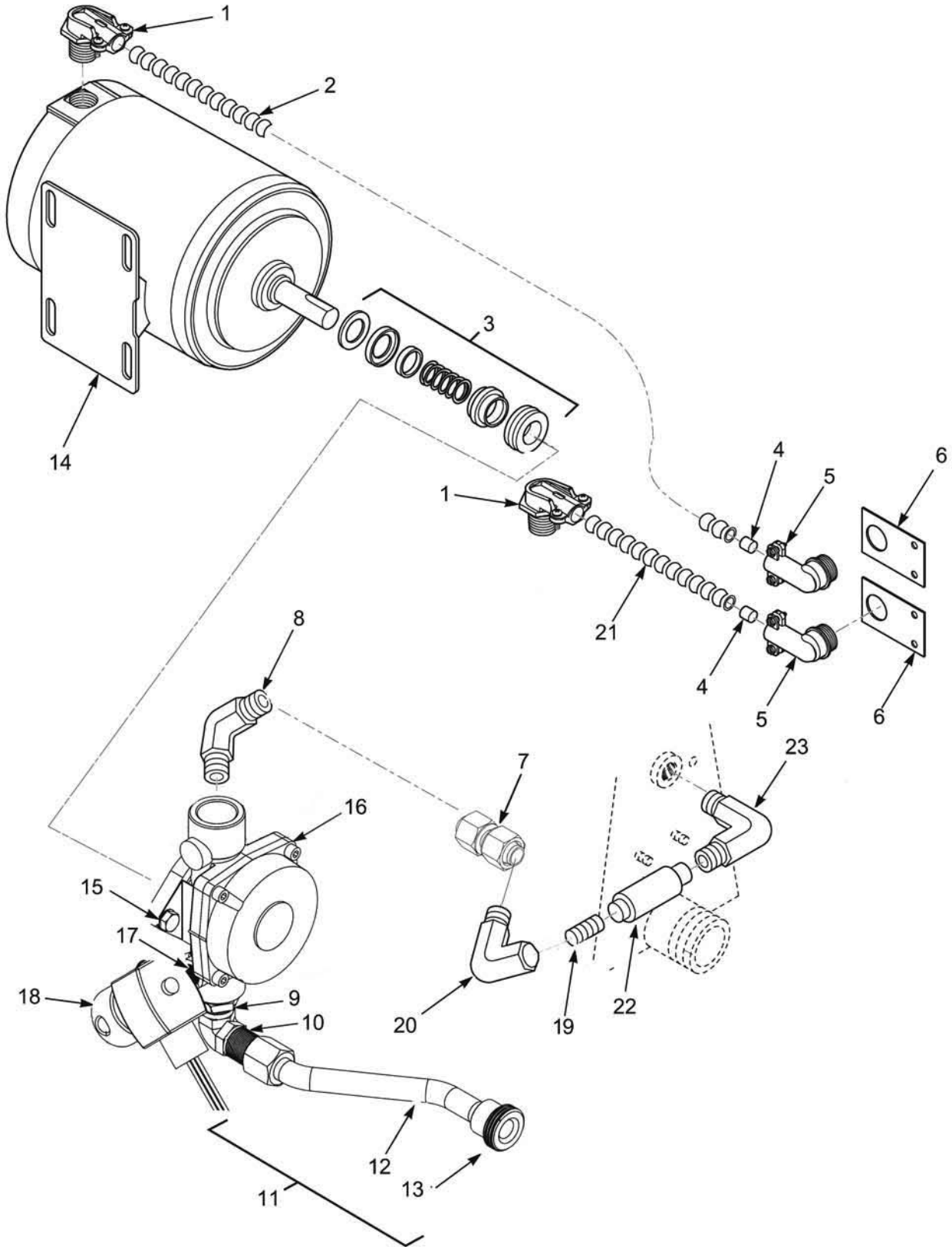


Figure 3-8B. Filter Pump Assembly (SN: LH016JC and above)

Figure & Item No.	Part No.	Description	Qty.
3-8B		FILTER PUMP ASSEMBLY (SN: LH016JC & above)	
1	18107	CONDUIT CONNECTOR 3/8 X 90 .....	2
2	54484	BLOWER/PUMP – FLEXIBLE CONDUIT .....	1
√ 3	17476	PUMP SEAL KIT .....	1
4	18105	ANTI SHORT 3/8 INCH .....	2
5	18644	CONDUIT CONNECTOR 3/8 X 90 .....	2
6	51831	PUMP CONDUIT BRACKET .....	2
7	65080	ASSY – PUMP TO CHECK VLV TUBE-390/690 .....	1
8	FP01-169	CON - 90 MALE 3/4 TUBE 3/4 NPT .....	1
9	FP01-089	BUSHING - REDUCING - 3/4M TO 1/2 .....	1
10	17407	CONNECTOR, 1/2 MALE ELBOW .....	1
11	66574	ASSY – DISCON. TO PUMP .....	1
12	65079	. ASSY – DISCON. TO PUMP TUBE .....	1
√ 13	17430(use 69289)	. UNION, MALE FITTING .....	1
√ 14	67583	MOTOR – 1/2 HP FILTER PUMP .....	1
15	LW02-014	LOCKWASHER - 5/16 INT STAR .....	1
16	64218	ASSY - FILTER PUMP 8 GPM .....	1
17	62050	NIPPLE 1/4 NPT X 2.0 .....	1
√ 18	52125	AIR-SOLENOID VALVE 120V .....	1
√ 18	54908	AIR-SOLENOID VALVE 240V .....	1
19	FP02-037	NIPPLE 3/4 X 2.5 LG BI .....	1
20	FP01-168	CON - 90 FEMALE 3/4 TUBE 3/4 NF .....	1
21	54486	AIR VALVE – FLEXIBLE CONDUIT .....	1
22	21800	VALVE - 3/4 CHECK .....	1
23	FP01-173	ELBOW - 3/4 NPT X 90 MALE NICKEL .....	1
24*	69355	ASSY, 3/4" PUMP AND MOTOR .....	1

√ recommended parts

\* not shown

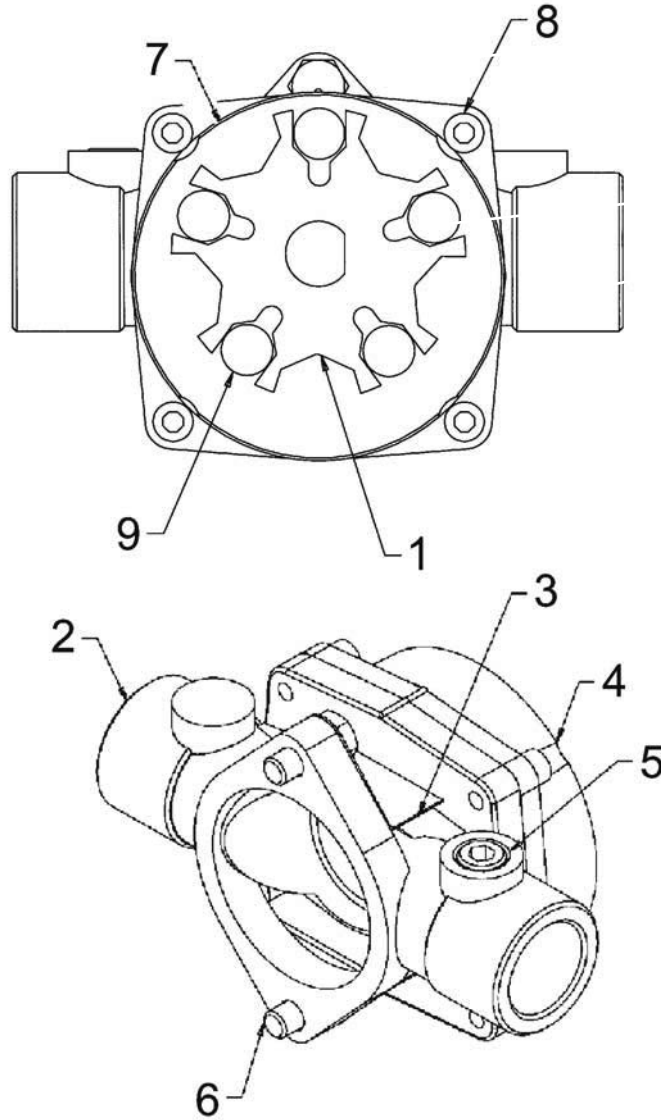


Figure & Item No.	Part No.	Description	Qty.
3-9	64218	FILTER PUMP ASSEMBLY PUMP SUBASSY 8GPM	
√ 1	23468	ROTOR - 8 GPM PUMP .....	1
√ 2	23647	BODY - 8 GPM PUMP .....	1
√ 3	17456	PUMP SHIELD .....	2
√ 4	23470	CAP - 8 GPM PUMP .....	1
√ 5	FP01-020	PLUG 1/4-18 HEX LEVEL SEAL .....	1
√ 6	SC01-026	SCREW 5/16-18 X 3/4 HEX HD C .....	2
√ 7	17453	PUMP O RING GASKET .....	1
√ 8	SC01-132	1/4-20 X 5/8 SOC HD CAP SCREW .....	4
√ 9	23469	ROLLER - 8 GPM PUMP .....	5

√ recommended parts

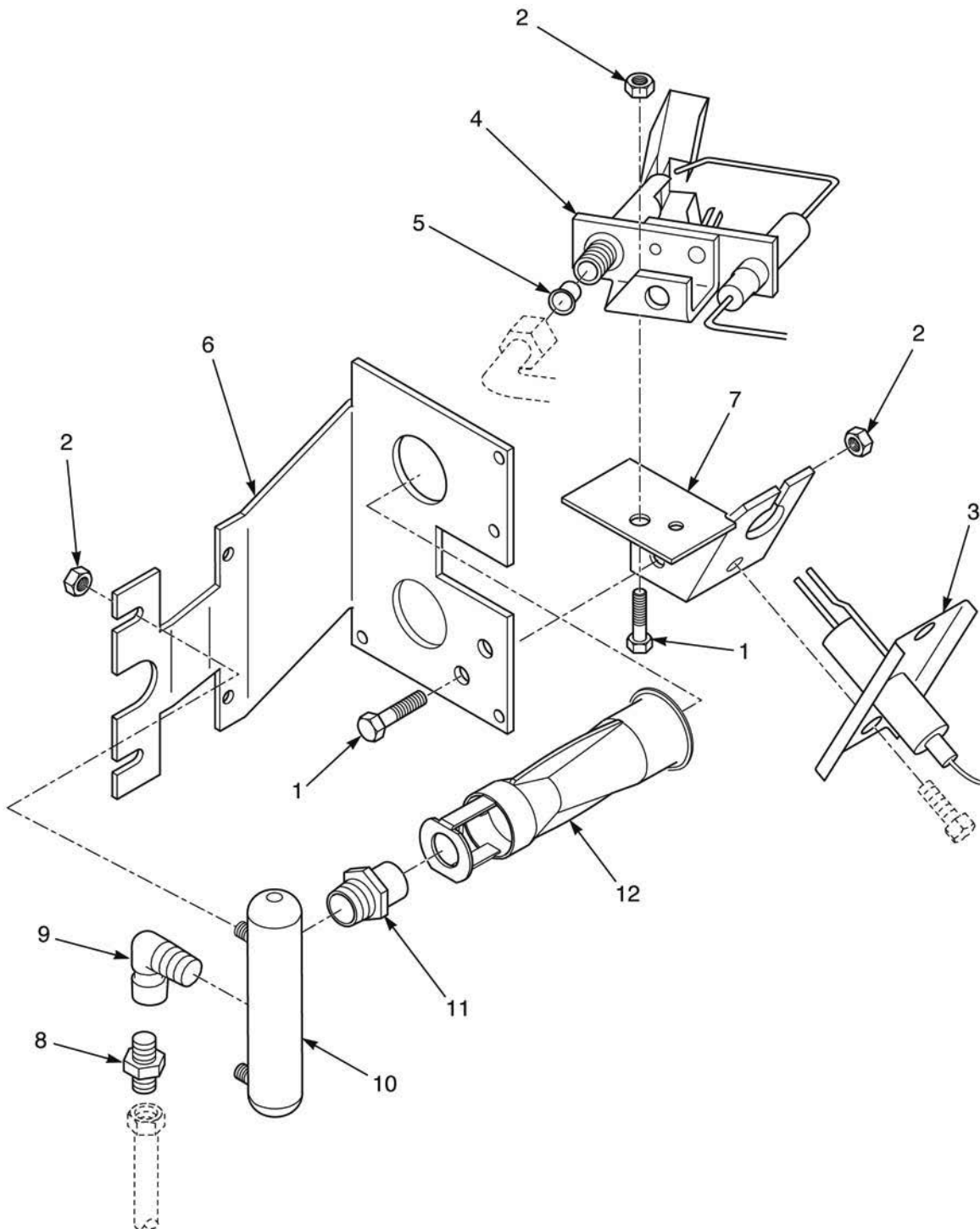


Figure 3-10. Gas Burner Assembly



Figure & Item No.	Part No.	Description	Qty.
3-10		GAS BURNER ASSEMBLY	
0*	56990-01	BURNER ASSY – NATURAL .....	2
0*	56990-02	BURNER ASSY – LP .....	2
0*	56990-03	BURNER ASSY – NATURAL CE .....	2
0*	56990-04	BURNER ASSY – LP CE .....	2
0*	56990-05	BURNER ASSY – PROPANE/BUTANE MIX .....	2
0*	56990-07	BURNER ASSY – NATURAL JAPAN .....	2
0*	56990-06	BURNER ASSY – LP/BUTANE MIX 70% PRO 30% BU .....	2
1	SC01-084	. SCREW #10-32 X 3/8 HEX HD S .....	8
2	NS02-001	. NUT HEX KEPS #10-32 C .....	8
√ 3	52074	. FLAME SENSOR .....	2
√ 4	52075	. PILOT & IGNITOR ASSY – NATURAL .....	2
√ 4	21333	. PILOT & IGNITOR ASSY – LP .....	2
5	54877	. . ORIFICE, PILOT – NATURAL .....	2
5	60614	. . ORIFICE, PILOT – LP .....	2
6	51735	. BURNER MOUNTING BRACKET .....	2
7	56708	. PILOT/FLAME SENSOR BRACKET .....	2
8	FP05-010	. CONNECTOR, 3/8 TUBE TO 1/4 NPT .....	2
9	FP01-117	. STREET ELBOW, 1/4 NPT B.I. ....	2
10	14852	. KIT - 390/690 GAS MANIFOLD .....	2
11	51725	. ORIFICE, BURNER – NATURAL .....	2
11	51730	. ORIFICE, BURNER – LP .....	2
11	55452	. ORIFICE, BURNER – CE NATURAL .....	2
11	55453	. ORIFICE, BURNER – CE LP .....	2
11	56219	. ORIFICE, BURNER – PROPANE/BUTANE MIX .....	2
11	40905	. ORIFICE, BURNER – LP BUTANE MIX 70% PRO 30% BU .....	2
11	56637	. ORIFICE, BURNER – NATURAL JAPAN .....	2
12	52066	. BURNER INSHOT .....	4
13*	14221	. CONVERSION KIT – LP. TO NAT. ....	1
13*	14222	. CONVERSION KIT – NAT. TO LP. ....	1
13*	14269	. CONVERSION KIT – LP. TO NAT.-JAPAN .....	1
13*	14321	. CONVERSION KIT – LP. TO NAT.-CE .....	1
13*	14322	. CONVERSION KIT – NAT. TO LP.-CE .....	1

√ recommended parts

\*not shown

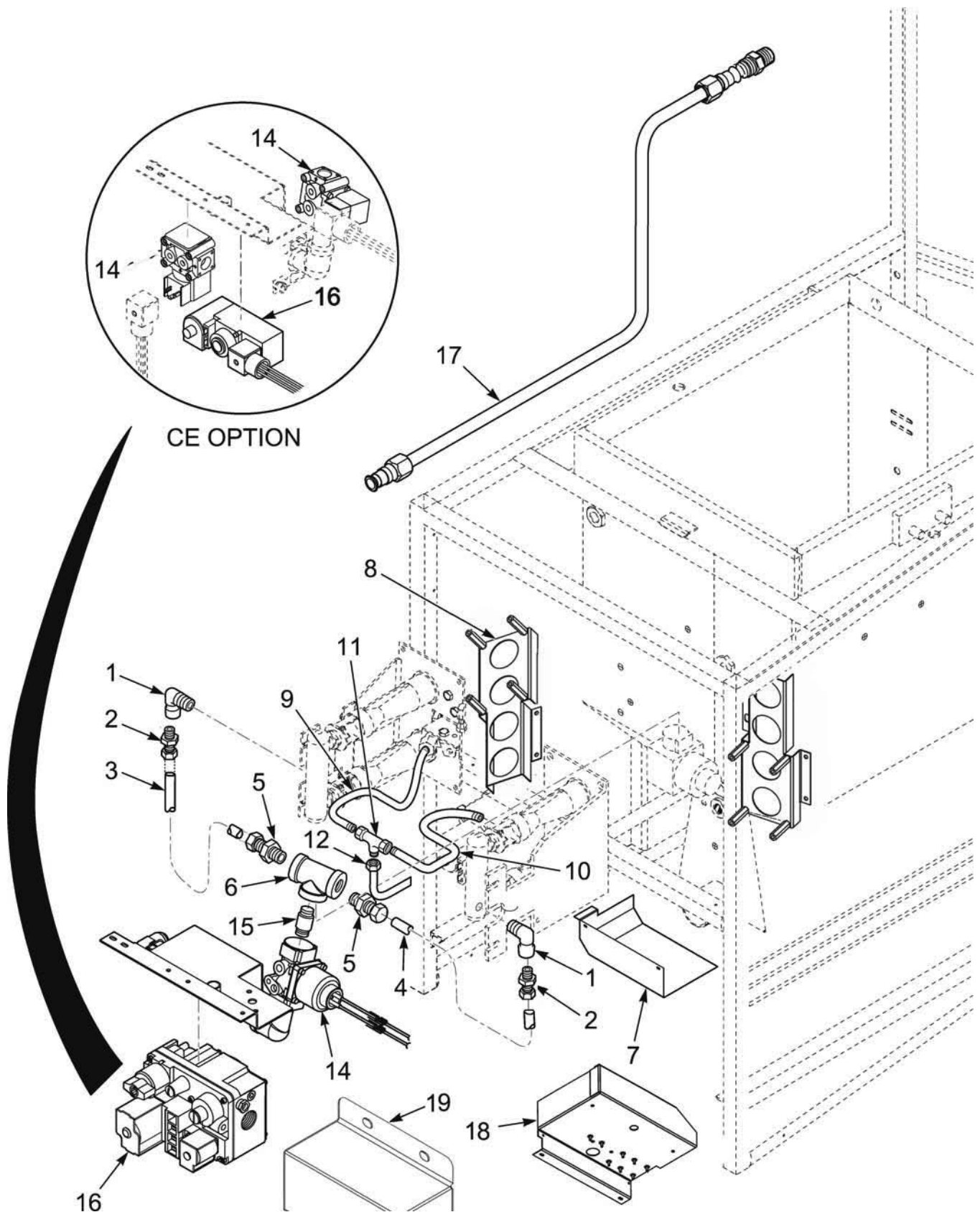


Figure 3-11. Gas Piping and Controls

Figure & Item No.	Part No.	Description	Qty.
3-11		GAS PIPING AND CONTROLS	
1	FP01-117	ELBOW .....	2
2	FP05-010	FITTING 3/8 TUBE TO 1/4 NP .....	2
3	65173	MANIFOLD TUBE .....	1
4	65173	MANIFOLD TUBE .....	1
5	FP01-115	NIPPLE – 3/8 to 1/2 NP. ....	2
6	FP01-112	1/2 NPT FEMALE PIPE TEE B.I. ....	1
7	54875	MODULE COVER .....	1
8	52785	BURNER SHIELD ASSY .....	2
	68536	BURNER SHIELD STUD ASSY .....	2
	51731	STANDOFF-BURNER .....	8
9	69441	PILOT TUBE – LEFT BURNER .....	1
10	69442	PILOT TUBE – RIGHT BURNER .....	1
11	FP05-011	TEE – 1/4 X 1/4 X 1/4 BR COMPR .....	1
12	69442	PILOT TUBE – VALVE TO TEE .....	1
13*	21452	GAS VALVE ASSY 24V – CE – NATURAL GAS .....	1
13*	21453	GAS VALVE ASSY 24V – CE – LP GAS .....	1
√ 14	38468	. SOLENOID GAS VALVE – 24V 60 HZ – NON CE .....	1
√ 14	34802	. SOLENOID GAS VALVE – 24V 50 HZ – CE .....	1
15	FP01-028	. NIPPLE, CLOSE 1/2 NPT SS 1 LG .....	1
√ 16	80761	. COMBINATION GAS VALVE – NAT.- (S/N: AP0907006 & ABOVE)-NON CE (USED IN 52476) .....	1
√ 16	80858	. COMBINATION GAS VALVE – LP.- (S/N: AP0907006 & ABOVE)NON CE .....	1
√ 16	140056	KIT-GAS VALVE- NAT/LP.- (S/N: AP0907005 & BELOW)-NON CE	1
16	140042	KIT-GAS VALVE- NAT/LP.- (S/N: AP0907005 & BELOW)-NON CE FOR UNITS BUILT WITHOUT 38468 SOLENOIDS .....	1
√ 16	21451	. 24V COMBINATION GAS VALVE – CE (USED IN 21452) .....	1
√ 16	21450	. 24V COMBINATION GAS VALVE – LP-CE (USED IN 21453) ....	1
17	52122	MAIN GAS SUPPLY LINE ASSY .....	1
17	55433	MAIN GAS SUPPLY LINE ASSY - CE (before 6-14-07) .....	1
17	76333	MAIN GAS SUPPLY LINE ASSY - CE (6-14-07 & after) .....	1
18	59189	STUD ASSY - MODULE ENCLOSURE .....	1
19	51741	WIRE COVER - GAS VALVE .....	1
20*	FP01-200	FITTING - GAS INLET BSPT .....	1

√ recommended parts

\*not shown

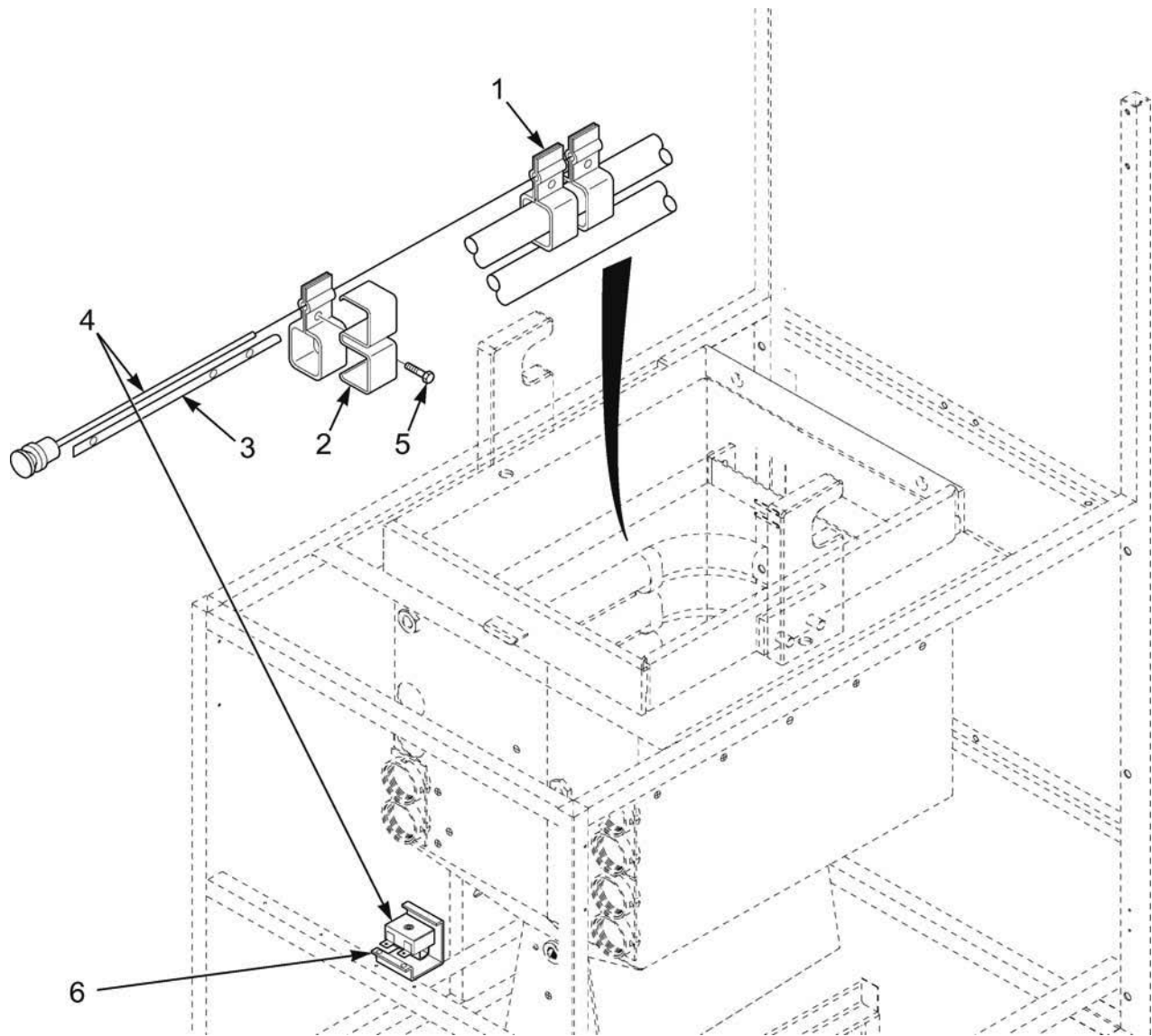


Figure & Item No.	Part No.	Description	Qty.
3-12		BURNER TUBES	
1	54480	BRACKET ASSY – HIGH LIMIT SENSING BULB .....	3
2	62051	CLIP – SPREADER – HEAT TUBE .....	6
3	53670	SPACER – HIGH LIMIT .....	1
√ 4	16738	450 HIGH LIMIT – NON CE .....	1
√ 4	60241	425 HIGH LIMIT – CE .....	1
5	SC01-211	SCREW #10-32 X 1/2 IND HEX HD S.S. ....	3
6	17216	BRACKET ASSY – HIGH LIMIT .....	1
7	16268	THERMOCOUPLE FITTING - POT (for High Limit) .....	1

√ recommended parts

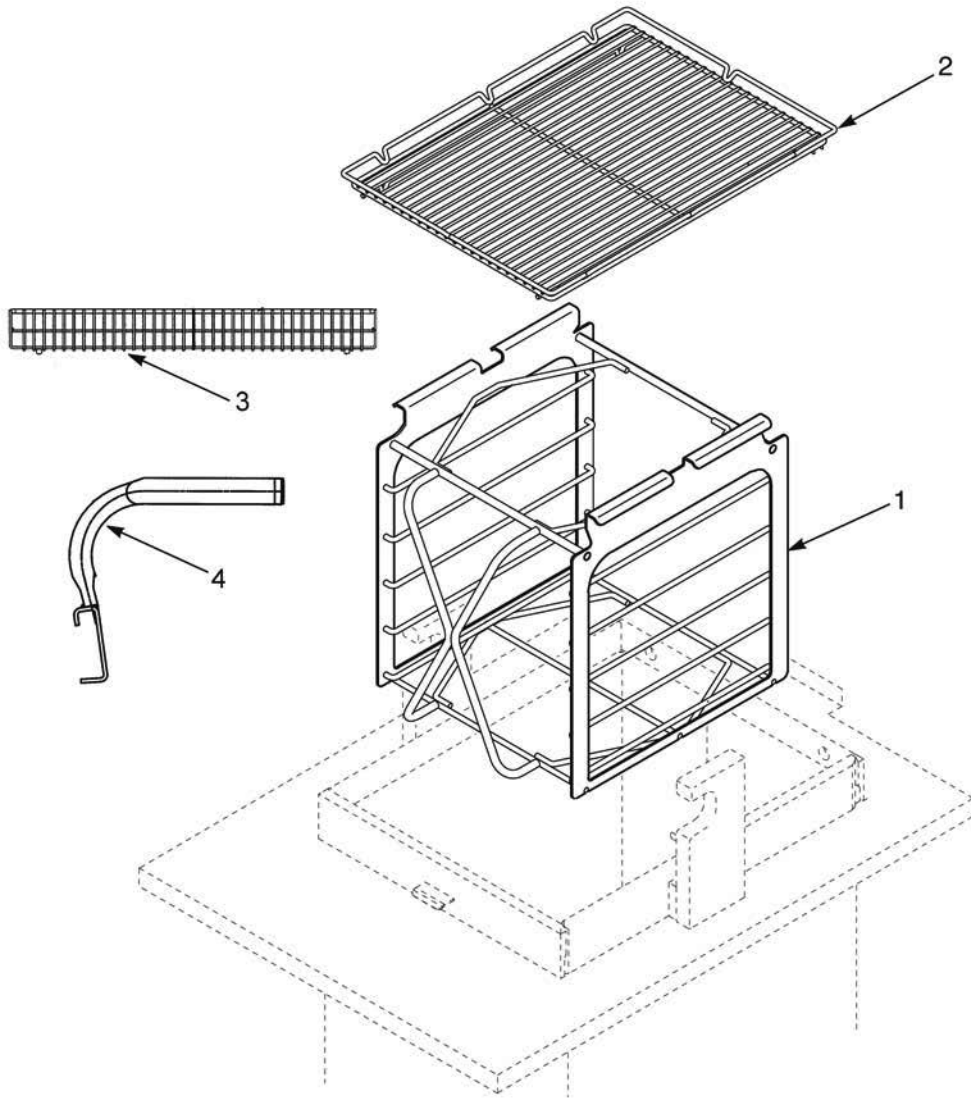


Figure & Item No.	Part No.	Description	Qty.
3-13		CARRIER AND RACKS	
1	62183	CARRIER ASSY .....	1
2	44782	RACK HALF SIZE – 8 HEAD FRYER .....	1
3	36404	WIRE BASKET - GM 8 HEAD .....	4
4	36374	ASSY - BASKET HANDLE WELD .....	1

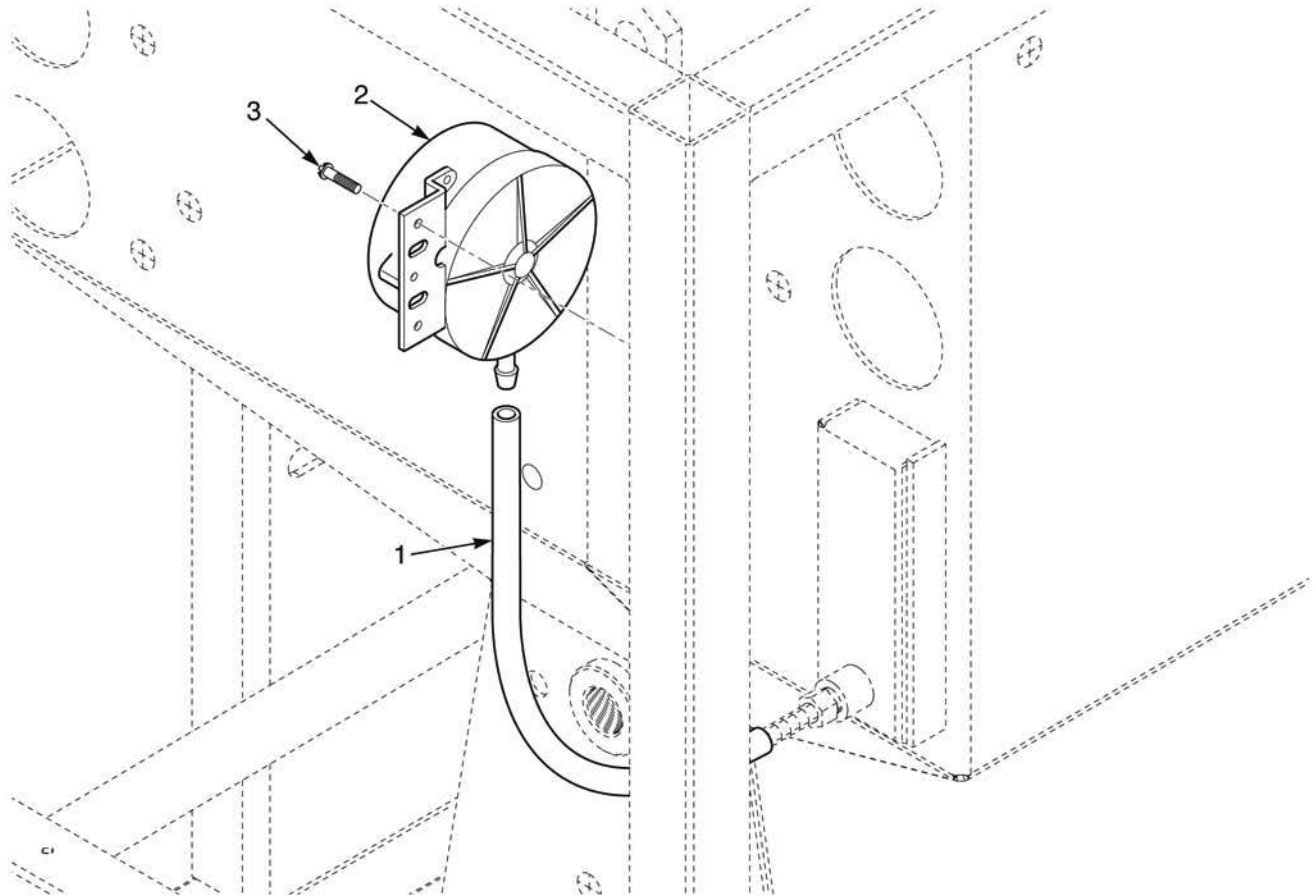
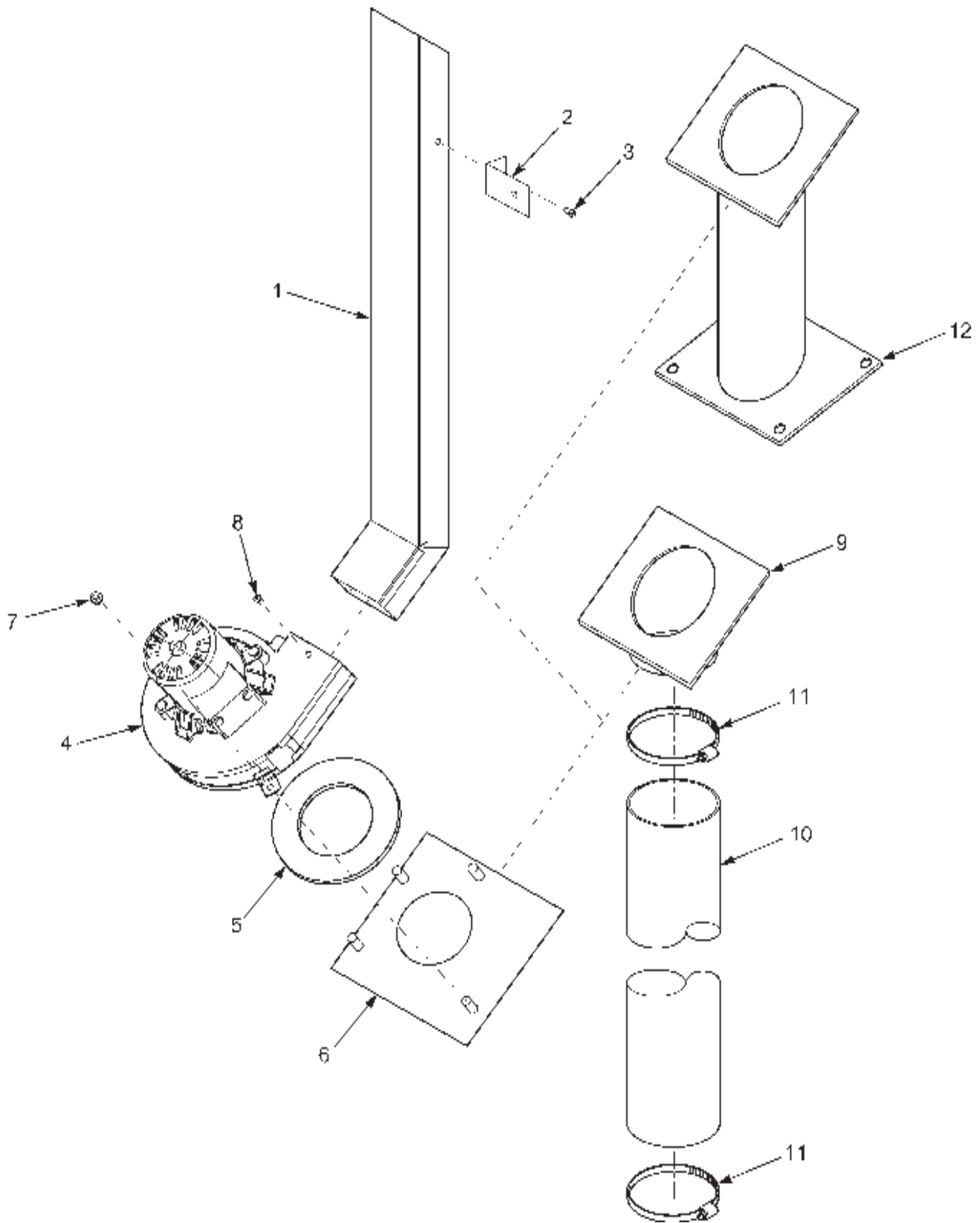


Figure & Item No.	Part No.	Description	Qty.
3-14		VACUUM SWITCH	
1	60202	TUBE-VACUUM SWITCH.....	1
√ 2	55607	VACUUM SWITCH – VERTICAL.....	1
3	SC03-005	SCREW .....	3

√ recommended parts



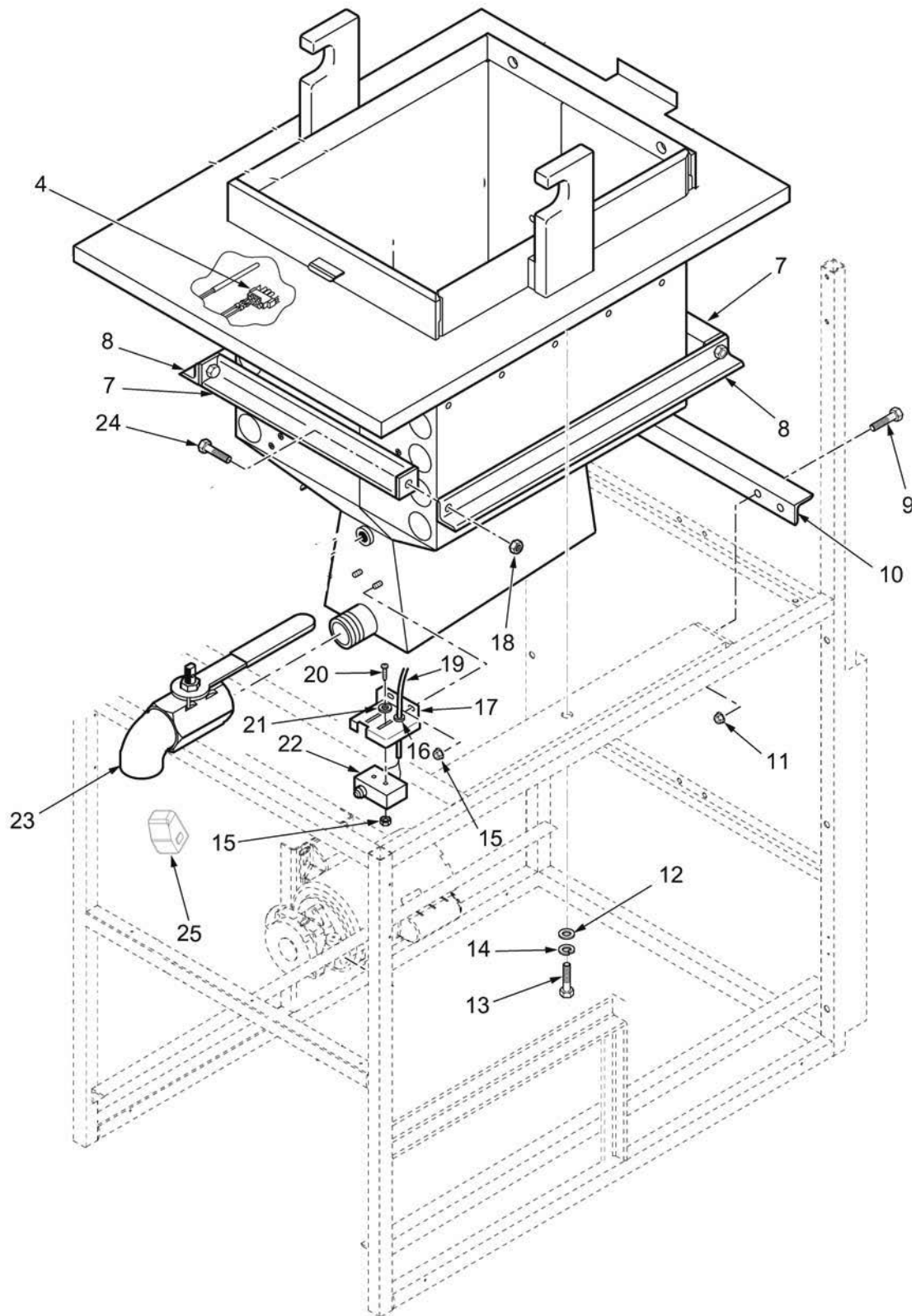
**Figure 3-15. Flue Assembly and Blower**  
**SN: BT0802002 & BELOW**

Figure & Item No.	Part No.	Description	Qty.
3-15		FLUE ASSEMBLY AND BLOWER (SN: BT0802002 & BELOW)	
1	55681	FLUE ASSY – WELDMENT .....	1
2	55783	BRACKET – FLUE RETAINING .....	1
3	SC03-005	SCREW SD #8 X 1/2 PH PHD .....	2
√ 4	14420	120V BLOWER – FLUE EXHAUST W/INSULATION..	1
√ 4	14421	100V BLOWER – FLUE EXHAUST W/INSULATION..	1
√ 4	14422	240V BLOWER – FLUE EXHAUST W/INSULATION..	1
5	21329	. INSULATION – BLOWER .....	1
6	55673	STUD ASSY – BLOWER MOUNT PLATE .....	1
7	NS02-002	NUT KEPS 1/4-20 C .....	4
8	SC02-041	#8-32 X 7/16 PH IND XTRNL TRX .....	2
9	55675	ASSY – INSUL/BLOWER INLET-NAT GAS ONLY .....	1
10	52103	DILUTION HOSE/BLOWER-NAT GAS ONLY .....	1
11	MS01-429	HOSE CLAMP – 3 9/16-4 1/2 PL-NAT GAS ONLY .....	2
12	32743	DILUTION HOSE ASSEMBLY-LP GAS ONLY .....	1
13*	14384	KIT, FLUE DUCTS – BUTANE .....	1
14*	54905	DILUTION BOX COVER - CE (0-3,999 FT) .....	1
14*	55880	DILUTION BOX COVER - LP-CE (OVER 3,999 FT)....	1
14*	55881	DILUTION BOX COVER - NAT.-CE (OVER 3,999 FT)	1

√ recommended parts

\*not shown

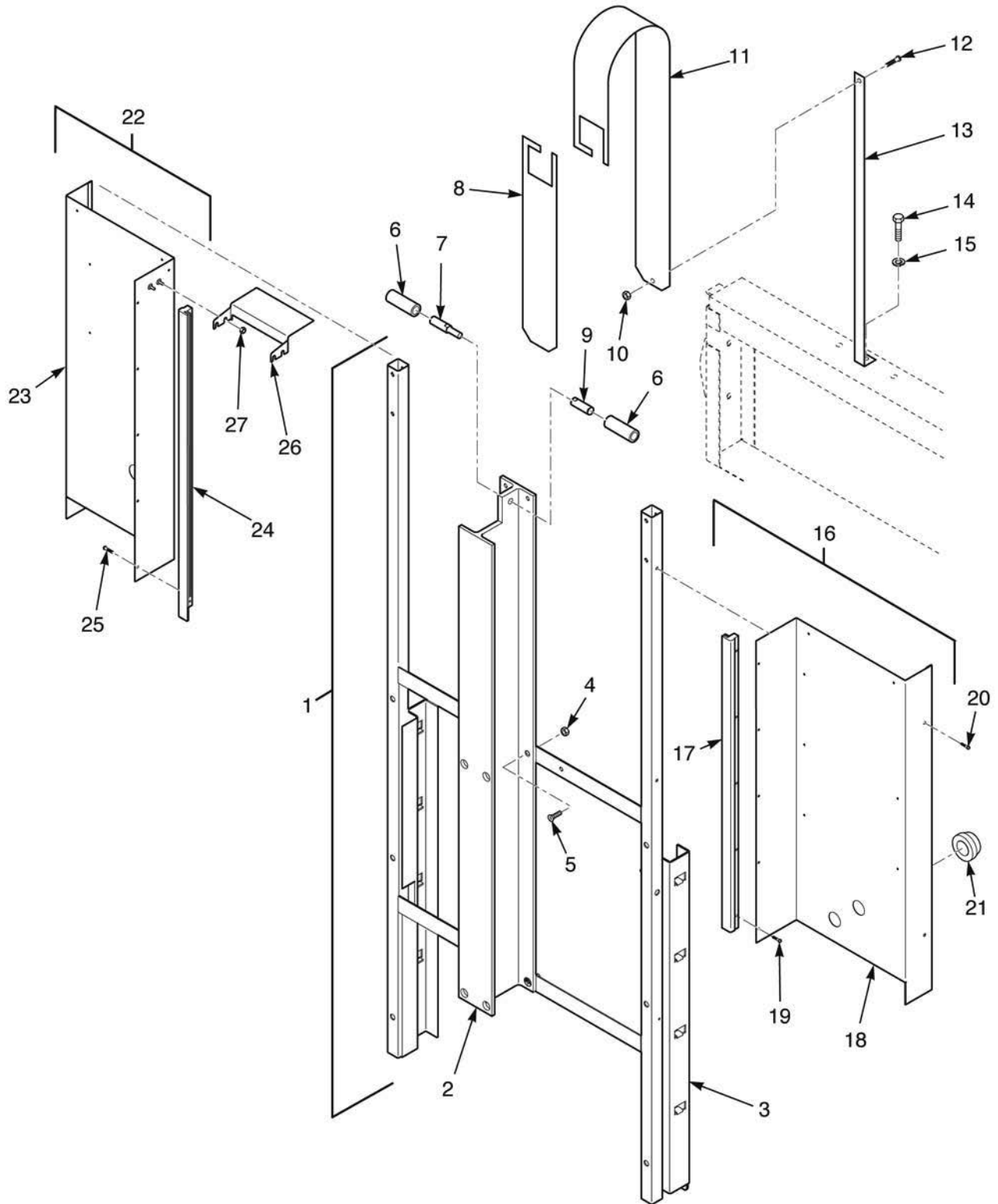




**Figure 3-16. Frypot and Drain Piping**

Figure & Item No.	Part No.	Description	Qty.
3-16		FRYPOT AND DRAIN PIPING	
√ 4	14330	KIT - PROBE ASSY – DOMESTIC (BELOW S/N FH001JC) .....	1
√ 4	140044	PROBE ASSY – (S/N FH001JC & ABOVE) .....	1
7	51792	POT BRACE, FRONT AND REAR .....	2
8	51790	POT BRACE, SIDE .....	2
9	SC01-022	SCREW 1/4-20 X 3/4 HEX HD. ....	4
10	51874	SUPPORT, REAR .....	1
11	NS02-002	NUT 1/4-20 .....	4
12	WA01-018	WASHER 3/8 FLAT .....	2
13	SC01-042	SCREW 3/8-16 X 1 HEX HD. ....	2
14	LW01-010	LOCKWASHER 3/8 SPLIT RING .....	2
15	NS02-005	NUT #6-32 HEX .....	4
16	EF02-017	STRAIN RELIEF .....	1
17	51891	BRACKET, SWITCH (SN: AP0403029 & BELOW) .....	1
17	67618	BRACKET, SWITCH (SN: AP0403030 & ABOVE) .....	1
18	NS01-016	NUT 7/16-14 HEX .....	4
19	52519	CORD ASSY., DRAIN INTERLOCK .....	1
20	SC01-058	SCREW #6-32 X 1 PH. PAN HD. ....	2
21	WA01-006	WASHER #6 .....	2
√ 22	54228	DRAIN SWITCH W/BOOT .....	1
23	21355	DRAIN VALVE W/EXTENSION (BELOW SN: AP0401001) .....	1
23	66446	DRAIN VALVE W/EXTENSION (SN: AP0401001 & ABOVE) .....	1
24	SC01-217	SCREW 7/16-14 X 1-1/4 HEX HD. ....	4
25	67617	BRACKET - MICROSWITCH TRIGGERING .....	1
26*	76683	(SN: BT0802002 & BELOW) PLATE - D/I SWITCH COVER GAS .....	1

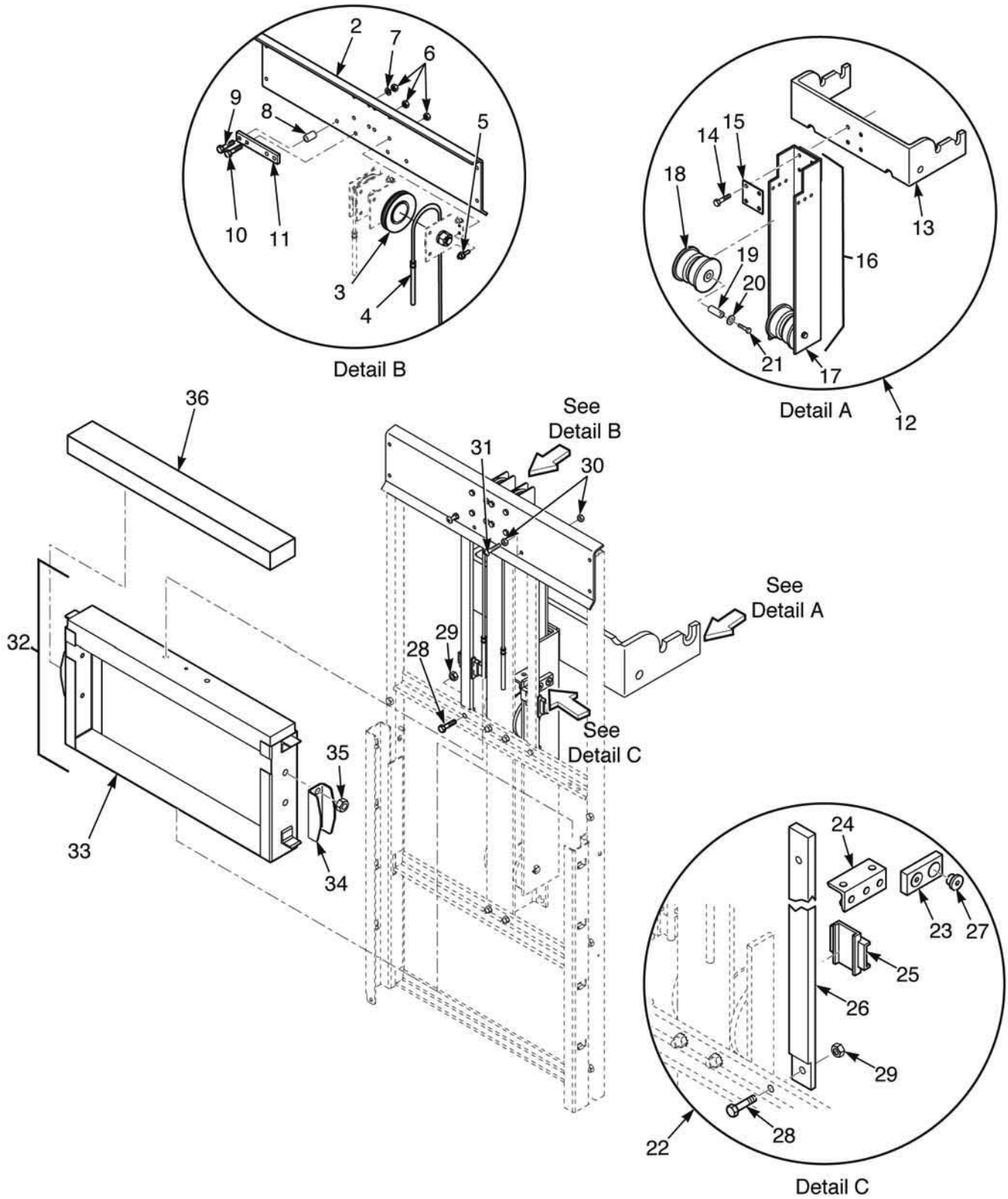
√ recommended parts



**Figure 3-17. Lift Beam and Shrouds  
SN: BT0802002 & BELOW**

Figure & Item No.	Part No.	Description	Qty.
3-17		LIFT BEAM AND SHROUDS <b>(SN: BT0802002 &amp; BELOW)</b>	
1	55678	ASSY – I-BEAM/LIFT FRAME .....	1
2	51548	. LIFT I-BEAM .....	1
3	55677	. LIFT FRAME ASSY – WELDMENT .....	1
4	NS02-008	.. NUT .....	4
5	SC01-212	.. SCREW .....	4
6	52474	STOP - LIFT U-CHANNEL .....	1
7	51595	STOP PIN MALE .....	1
8	56825	LIFT STRAP FILLER – LOWER .....	1
9	51594	STOP PIN – FEMALE .....	1
10	NS02-007	NUT .....	1
11	56824	LIFT STRAP FILLER – UPPER .....	1
12	SC01-034	SCREW – PH .....	1
13	52177	LIFT STRAP .....	1
14	SC01-052	BOLT .....	1
15	LW01-002	LOCK WASHER .....	1
16	52784	ASSY – FRONT SHROUD/RIGHT .....	1
17	21345	. SLIDE GUIDE – RIGHT .....	1
18	52482	. WELDMENT – FRONT SHROUD/RIGHT .....	1
19	SC01-023	. SCREW #6-32 X 1/4 PH RHD C .....	5
20	SC03-005	SCREW – PH .....	4
21	16804	UMBRELLA GROMMET .....	3
22	52521	ASSY – FRONT SHROUD/LEFT .....	1
23	62087	. ASSY – FRONT SHROUD, LEFT STUD .....	1
24	21346	. SLIDE GUIDE – LEFT .....	1
25	SC01-023	. SCREW #6-32 X 1/4 PH RHD C .....	5
26	62091	SHROUD SPACER/PULLY GUARD .....	1
27	NS02-005	NUT .....	4
28	14218*	SINGLE TO DOUBLE LIFT STRAP KIT .....	1

\*not shown



**Figure 3-18. Counterweight and Pulley System  
SN: BT0802002 & BELOW**

Figure & Item No.	Part No.	Description	Qty.
3-18		COUNTERWEIGHT AND PULLEY SYSTEM (SN: BT0802002 & BELOW)	
1	52475	PULLEY ASSY .....	1
2	51677	. PULLEY PLATE .....	1
3	35962	. BRACKET/WHEEL ASSY .....	2
√ 4	35207	. CABLE .....	2
5	SC01-022	. SCREW 1/4-20 X 3/4 HEX HD C .....	8
6	NS02-002	. NUT KEPS 1/4-20 C .....	12
7	WA01-002	WASHER .....	2
8	51590	SPACER .....	2
9	SC01-104	BOLT .....	2
10	SC01-022	BOLT .....	2
11	51591	I BEAM - PULLEY BRACE .....	1
12	54494	ASSY - LID ARM/U-CHANNEL .....	1
13	51692	. MACHINED - ARM - LID LIFT .....	1
14	55883	. SCREW 3/8-16 X 1-1/2 FT HH G .....	4
15	55598	. TORQUE PLATE - U-CHANNEL .....	1
16	54493	. ASSY - LIFT U-CHANNEL .....	1
17	51549	.. LIFT U-CHANNEL .....	1
18	66715	.. WHEEL - TRUCK .....	4
19	51593	.. SPINDLE - U CHANNEL WHEEL .....	4
20	LW01-001	.. LOCKWASHER SPLIT RING 3/8 ID .....	4
21	SC01-081	.. SCREW 3/8-24 X 3/4 HEX HD S .....	4
22	55873	STABILIZER COMPONENTS - ASSY .....	1
23	59113	. SUPPORT ARM - STABILIZER .....	2
24	51553	. ASSY - CABLE MOUNTING BRACKET .....	2
25	59112	. SLIDE - STABILIZER .....	2
26	59111	. BRACE - STABILIZER .....	2
27	SC01-226	. 5/16-18 X 1-1/4 FHD CAP SCREW .....	6
28	SC01-146	. SCREW 1/4-20 X 3/4 HEX HD C .....	2
29	NS02-002	. NUT KEPS 1/4-20 C .....	4
30	NS01-012	. NUT HEX 1/4-20 C .....	2
31	SC01-232	. 1/4-20 X 2.00 TRUSS HD PH ZI .....	2
32	54492	ASSY - CARRIAGE, WEIGHT .....	1
33	52118	. ASSY - WEIGHT BRACKET, STUD .....	1
34	62018	. GUIDE - COUNTER WEIGHT .....	2
35	NS02-002	. NUT KEPS 1/4-20 C .....	4
36	36627	COUNTERWEIGHT BAR .....	4

√ recommended parts

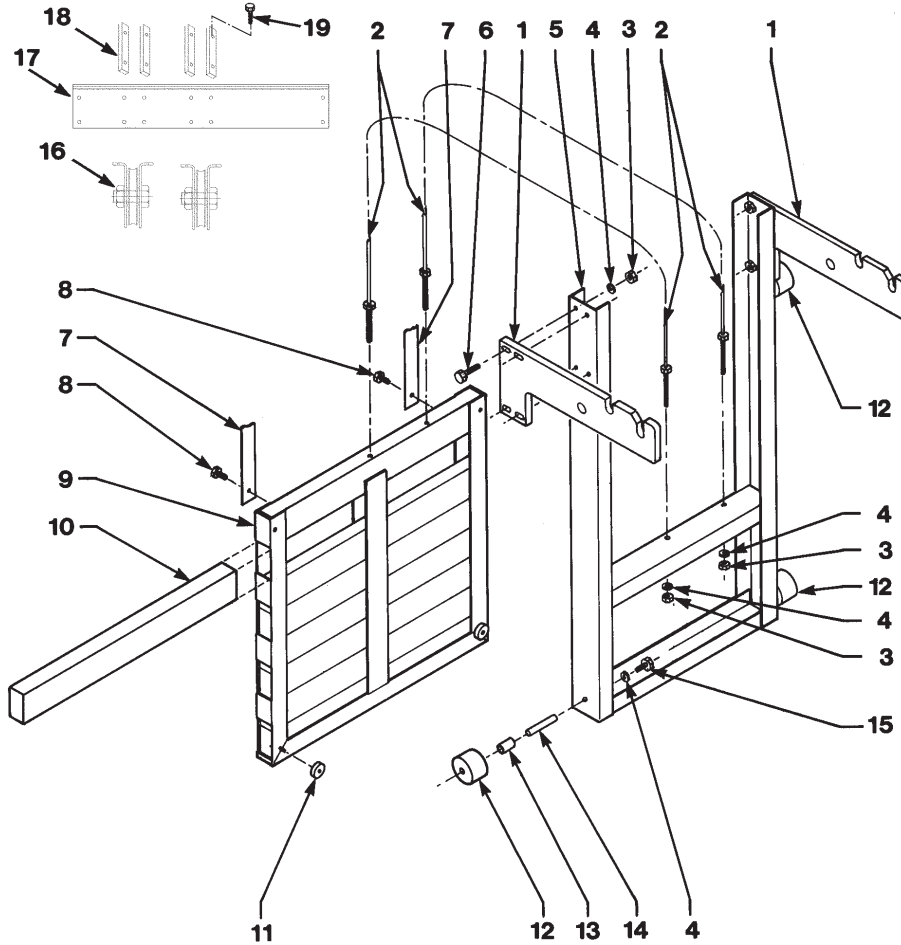


Figure & Item No.	Part No.	Description	Qty.
3-21		<b>COUNTERWEIGHT SYSTEM (SN: BT0802003 &amp; ABOVE)</b>	
1	35026	ARM, LID SUPPORT .....	2
√ 2	35207	CABLE .....	2
3	NS01-025	NUT, HEX 5/16-18 SS .....	10
4	LW01-010	WASHER, 3/8 SPLIT RING SS .....	10
5	35092	CARRIAGE .....	1
6	SC01-069	SCREW, 3/8-16 X 1-1/2 HEX HD S2P .....	8
7	36839	SLIDE .....	2
8	SC01-042	SCREW, 3/8-16 X 1 HEX C .....	2
9	36625	WELD ASSEMBLY, C/W CARRIAGE .....	1
10	36627	COUNTERWEIGHT BAR .....	7
11	36626	SPACER, C/W FRAME .....	2
12	37362	WHEEL, CARRIAGE .....	4
13	37363	SPACER, CARRIAGE WHEEL .....	4
14	37364	SPINDLE .....	4
15	SC01-081	SCREW, 3/8-24 X 3/4 HEX HD SS .....	4
16	35962	BRACKET/WHEEL ASSY. ....	2
17	36561	BRACE, TOP FRAME .....	1
18	35964	PLATE, SUPPORT PULLEY .....	4
19	SC01-132	1/2-20 X 5/8 SOC HD CAP SCREW .....	8

√ recommended parts

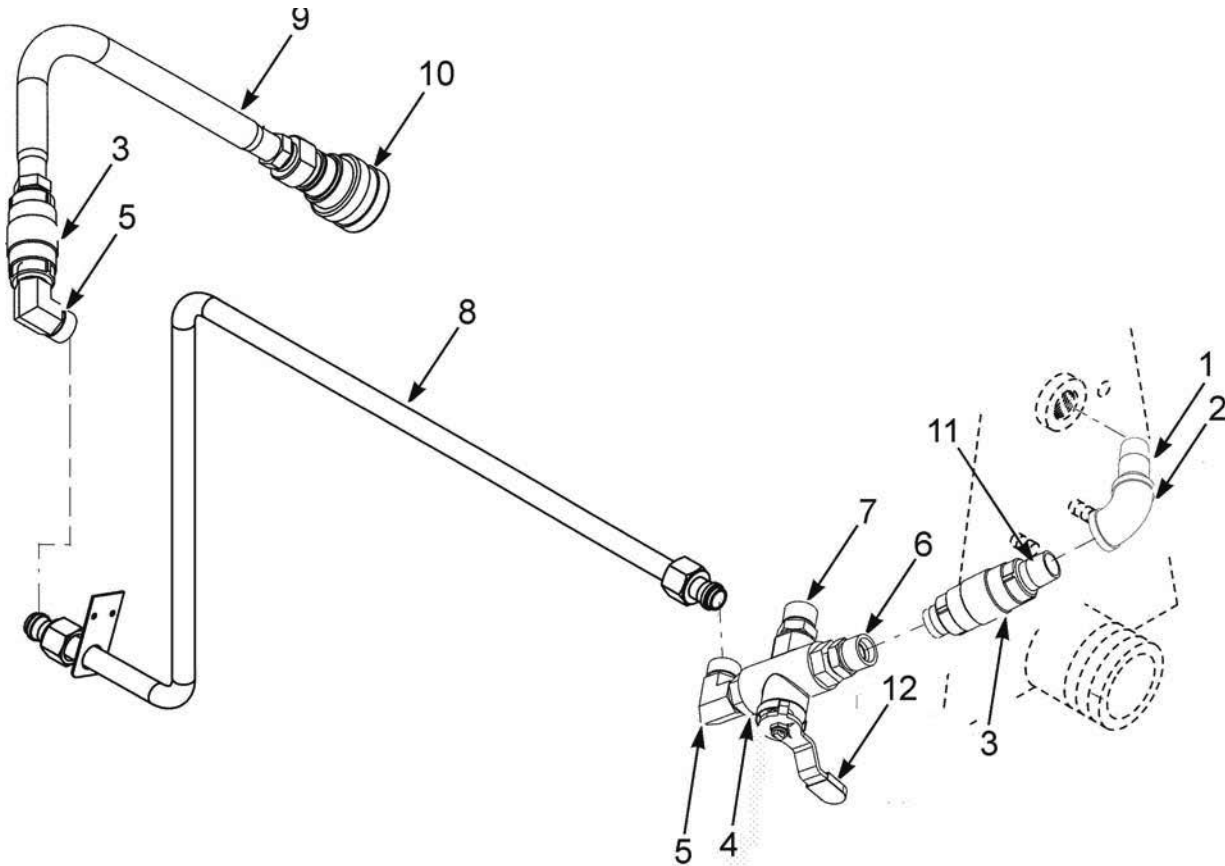


Figure & Item No.	Part No.	Description	Qty.
3-19	14639	OPTIONAL DIRECT-CONNECT KIT .....	1
		(SN: LH029JC and above only)	
1	FP01-175	NIPPLE - 3/4 NPT X 2.5 LG SS .....	1
2	FP01-176	ELBOW - 3/4 SS .....	1
3	21800	VALVE - 3/4 CHECK .....	2
4	68510	VALVE - 3/4 DIVERTER W/O HANDLE .....	1
5	FP01-169	CON - 90 MALE 3/4 TUBE 3/4 NPT .....	2
6	16282	NIPPLE - 3/4 CLOSE .....	1
7	FP01-170	CON - STR MALE 3/4 NPT .....	1
8	67692	ASSY - DIRECT CONN TUBE 8 HEAD .....	1
9	21753	HOSE - SHORTENING DISCARD .....	1
10	21612	DISCONNECT - FEMALE .....	1
11	FP02-060	NIPPLE - 3/4 SS CLOSE .....	1
12	68126	HANDLE - 8 HEAD DIRECT CONNECT .....	1



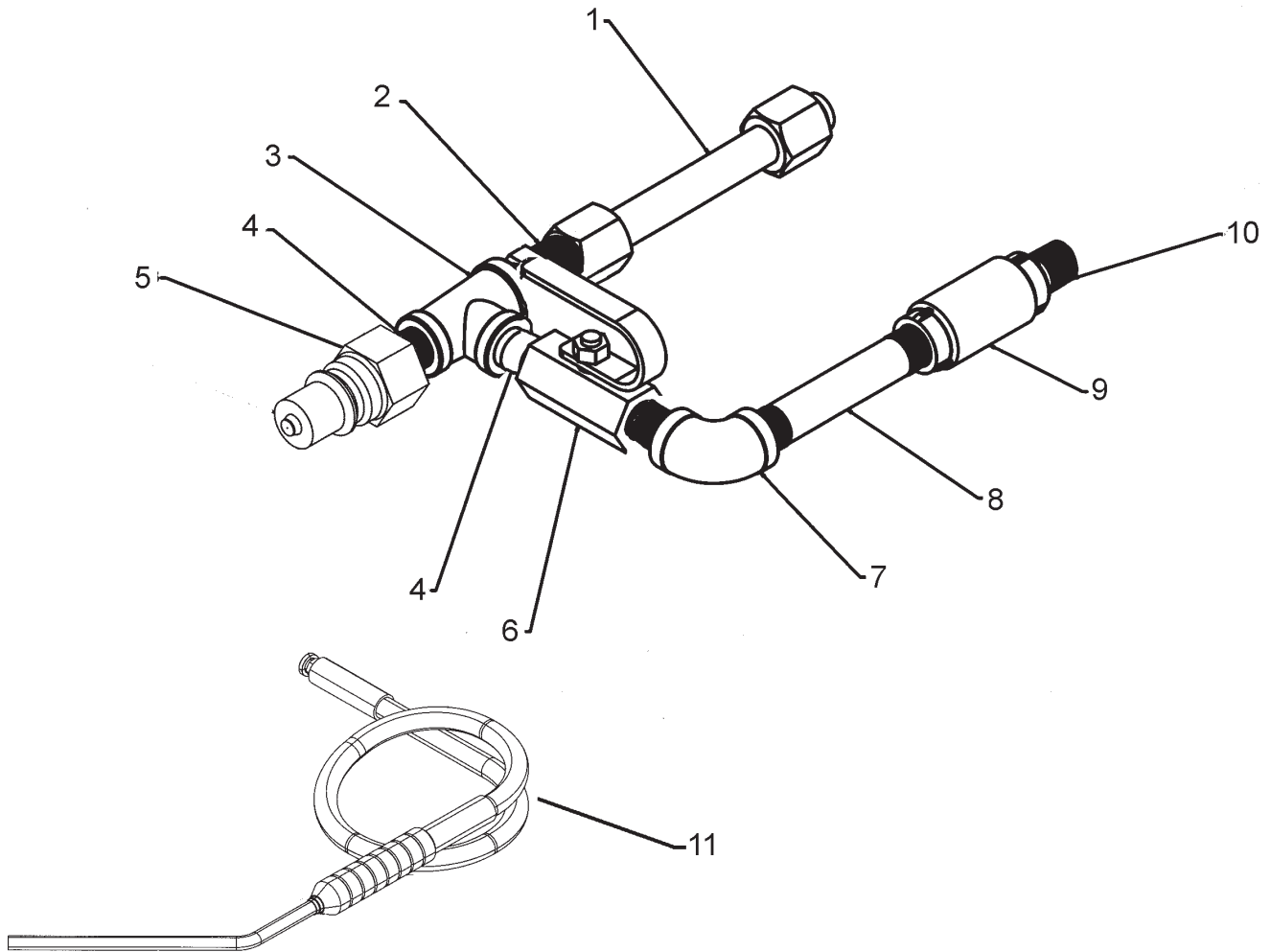


Figure & Item No.	Part No.	Description	Qty.
3-20A	14259	OPTIONAL RINSE HOSE KIT .....	1
		(SN: LH015JC and below)	
1	56981	ASSY - PUMP TO POT TUBE .....	1
2	16807	FITTING CONNECTOR - MALE .....	1
3	17306	PIPE TEE FITTING .....	1
4	FP02-024	NIPPLE - 3/8 NPT CLOSE B.I. ....	2
5	17334	RINSE HOSE DISCONNECT - MALE .....	1
6	59185	VALVE - FILTER - SM. "C" HANDLE .....	1
7	FP01-114	STREET ELBOW - 3/8 NPT B.I. ....	1
8	FP01-116	NIPPLE - 3/8 NPT X 4" LG B.I. ....	1
9	35472	CHECK VALVE - PRESSURE .....	1
10	FP02-007	NIPPLE - 3/8 X 1-1/2 .....	1
11	03003	DETACHABLE HOSE ASSEMBLY .....	1

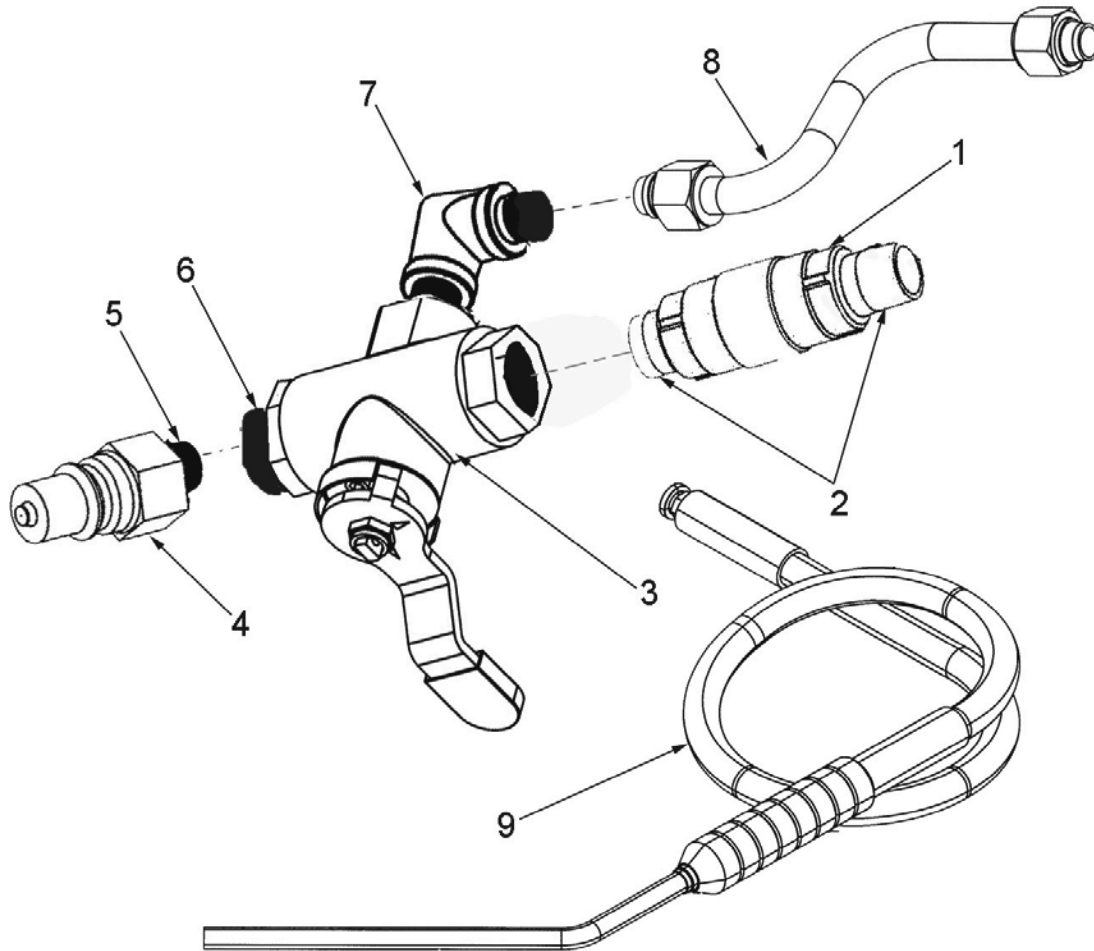


Figure & Item No.	Part No.	Description	Qty.
3-20B		OPTIONAL RINSE HOSE ASSEMBLY (SN: LH016JC and above)	
1	21800	VALVE - 3/4 CHECK .....	1
2	16282	NIPPLE - 3/4 CLOSE .....	2
3	66697	VALVE - 3/4 DIVERTER .....	1
4	17334	RINSE HOSE DISCONNECT - MALE .....	1
5	FP02-024	NIPPLE - 3/8 NPT CLOSE B.I. ....	1
6	FP01-143	BUSHING 3/4 X 3/8 B.I. ....	1
7	FP01-169	CON - 90 MALE 3/4 TUBE 3/4 NPT .....	1
8	66810	ASSY - 391/691 FLTR RINSE TUBE .....	1
9	03003	DETACHABLE HOSE ASSEMBLY .....	1